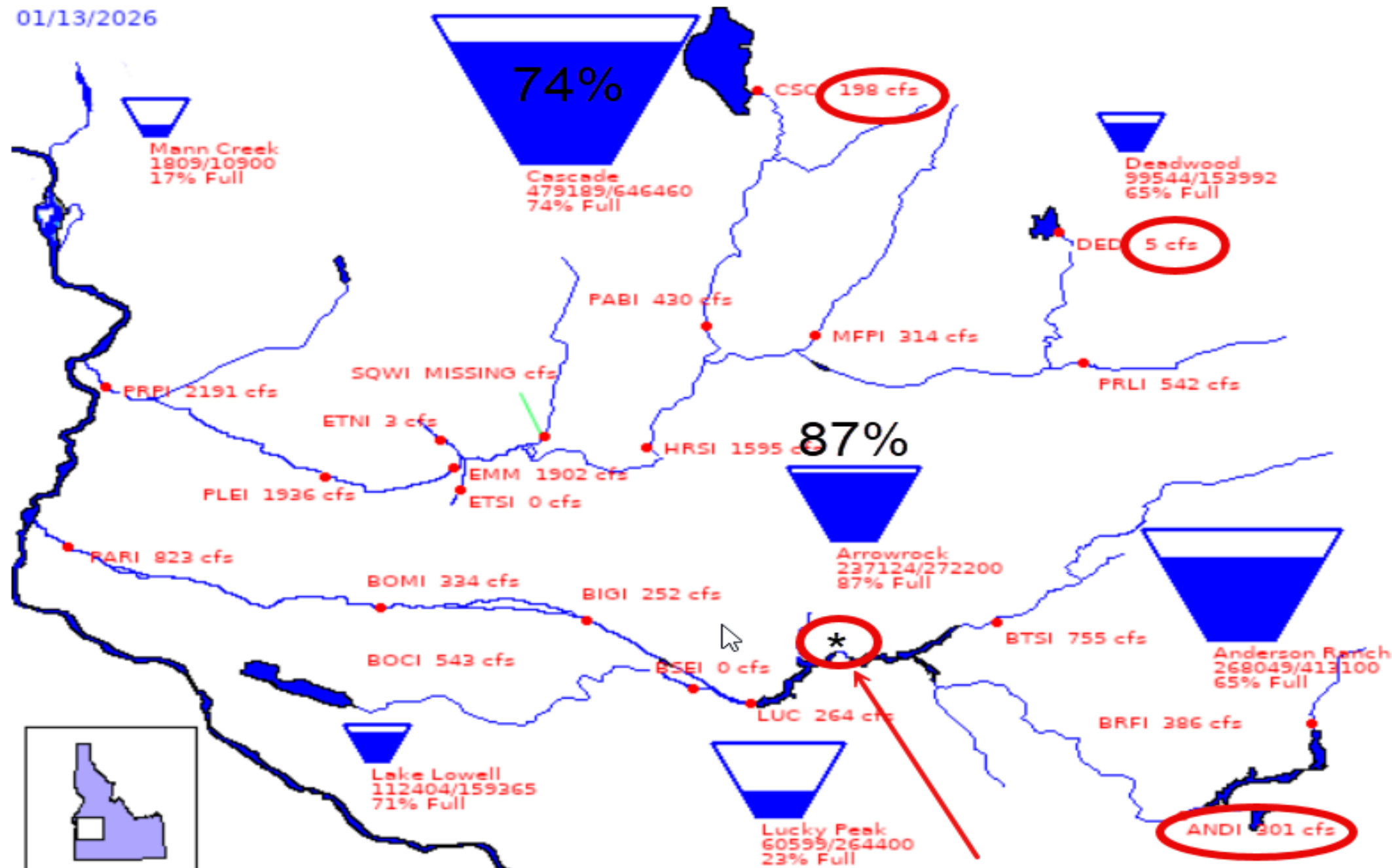


January Water Supply Meeting 2026

USBR Ryan Hedrick

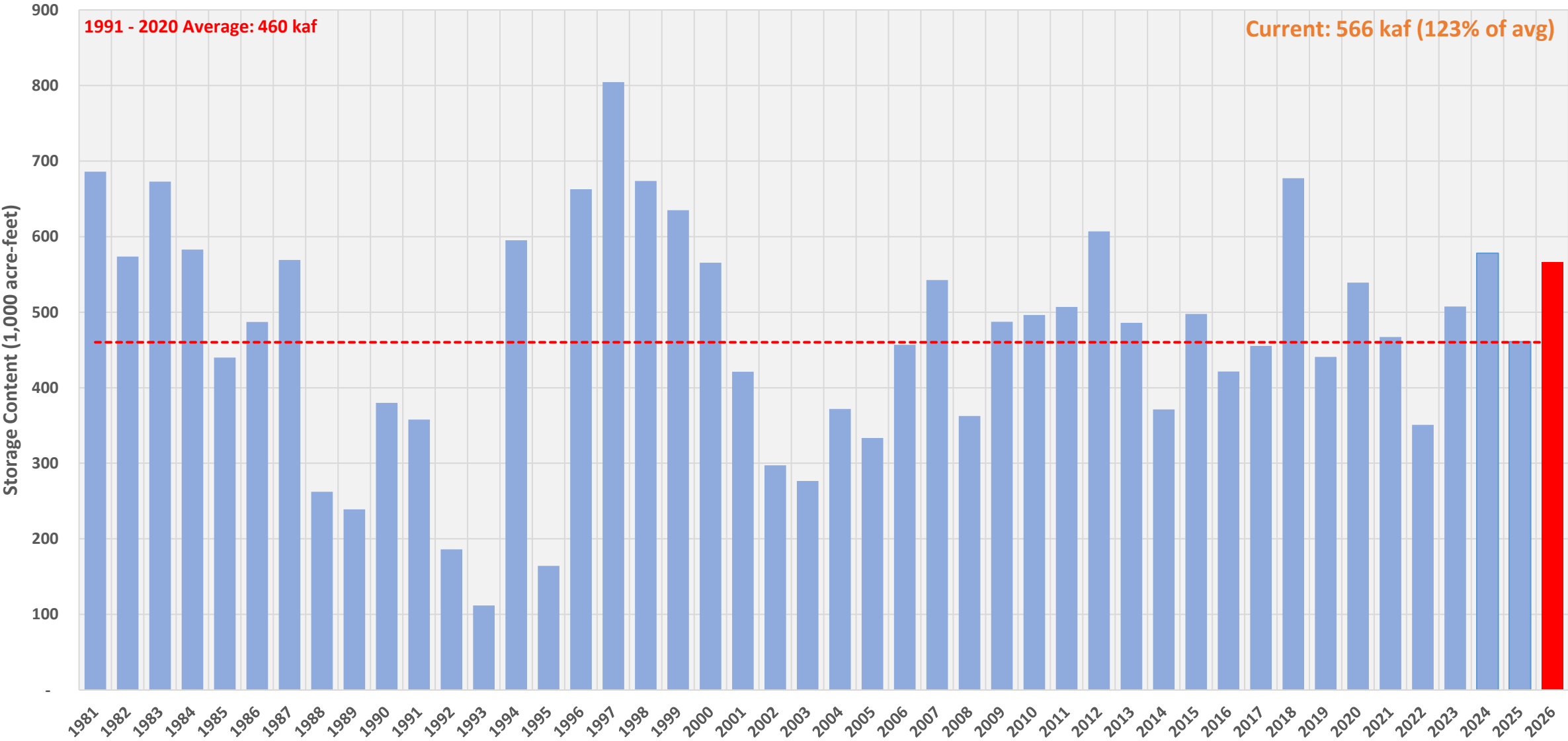
01/13/2026



*Increasing flow to 1300 cfs Jan 20th

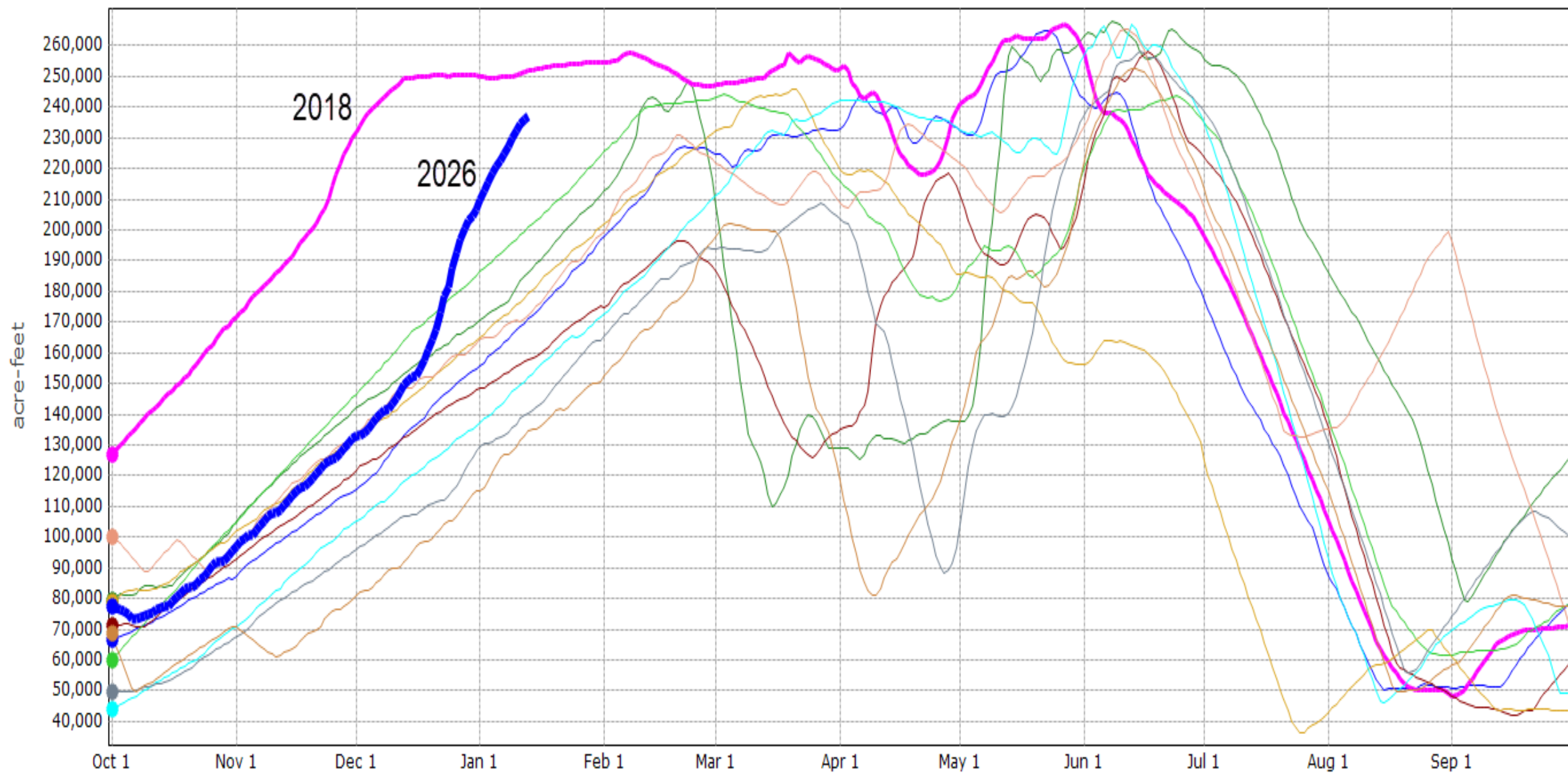
Boise System Storage Content - Jan 13, 2026

Series7 Series2 Series1



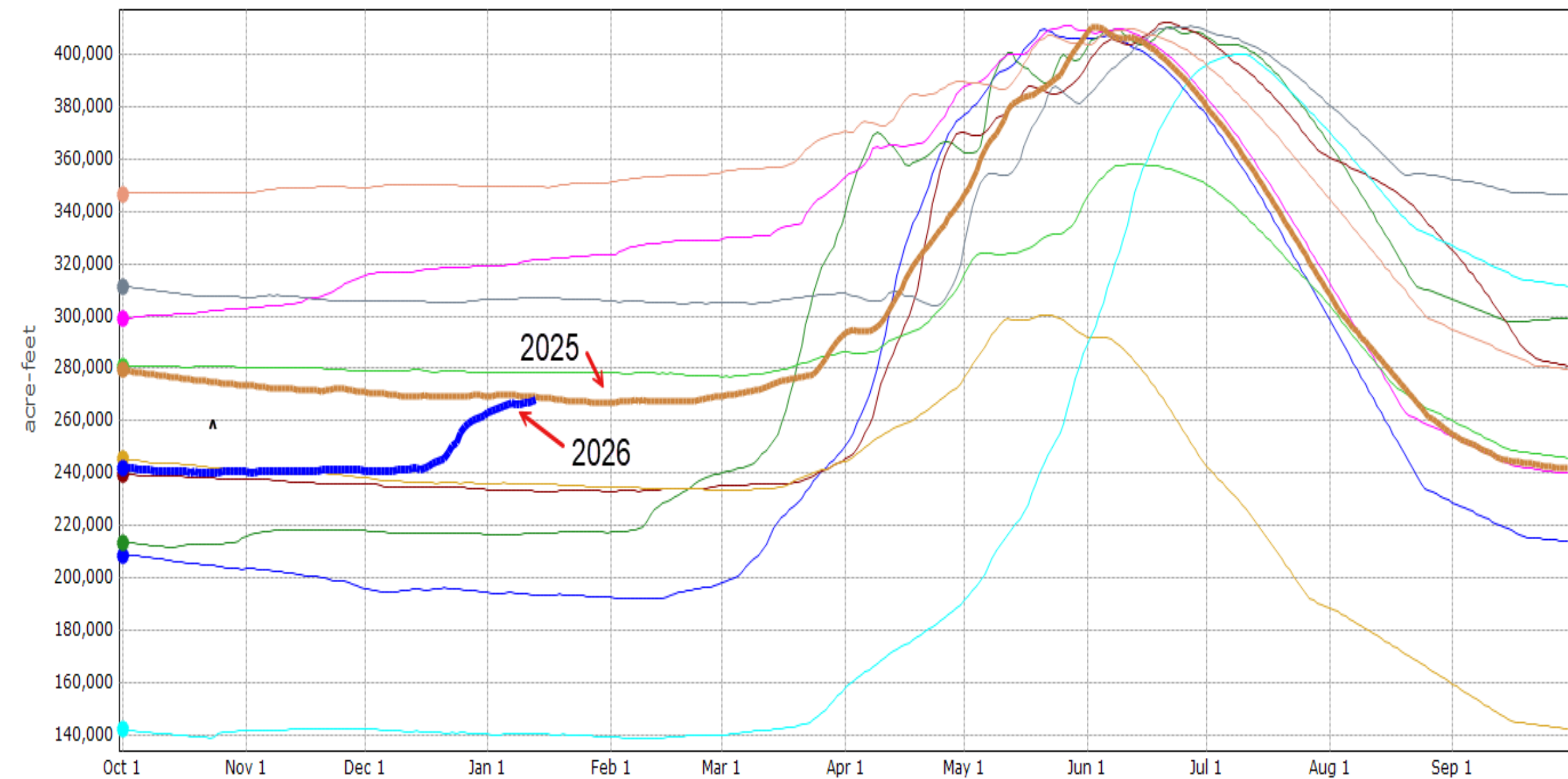
Arrowrock Dam and Reservoir, Elevation: 3216 ft

— 2016 — 2017 — 2018 — 2019 — 2020 — 2021 — 2022 — 2023 — 2024 — 2025 — 2026

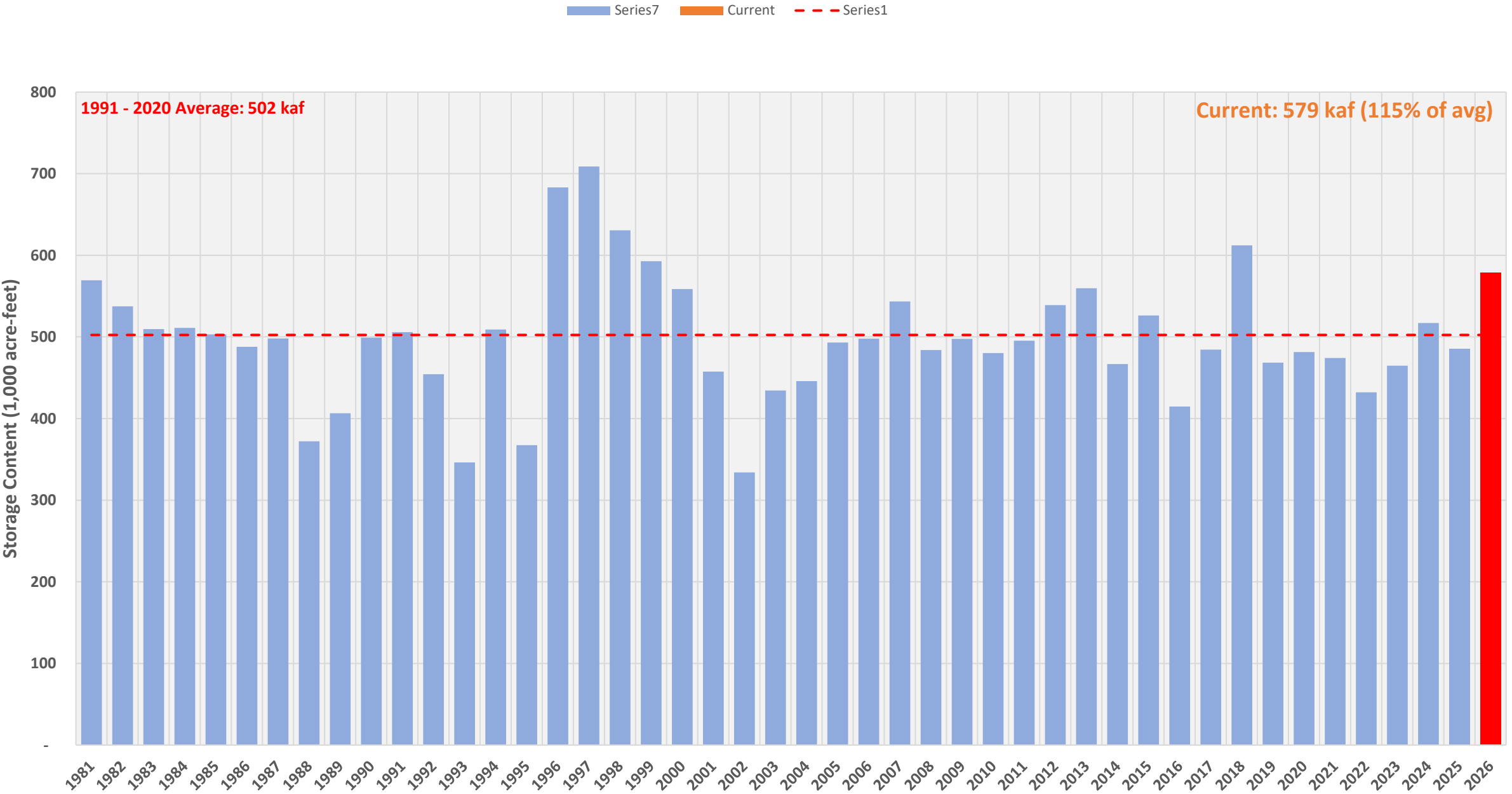


Anderson Ranch Dam and Reservoir, Elevation: 3880 ft

— 2016 — 2017 — 2018 — 2019 — 2020 — 2021 — 2022 — 2023 — 2024 — 2025 — 2026



Payette System Storage Content - Jan 13, 2026

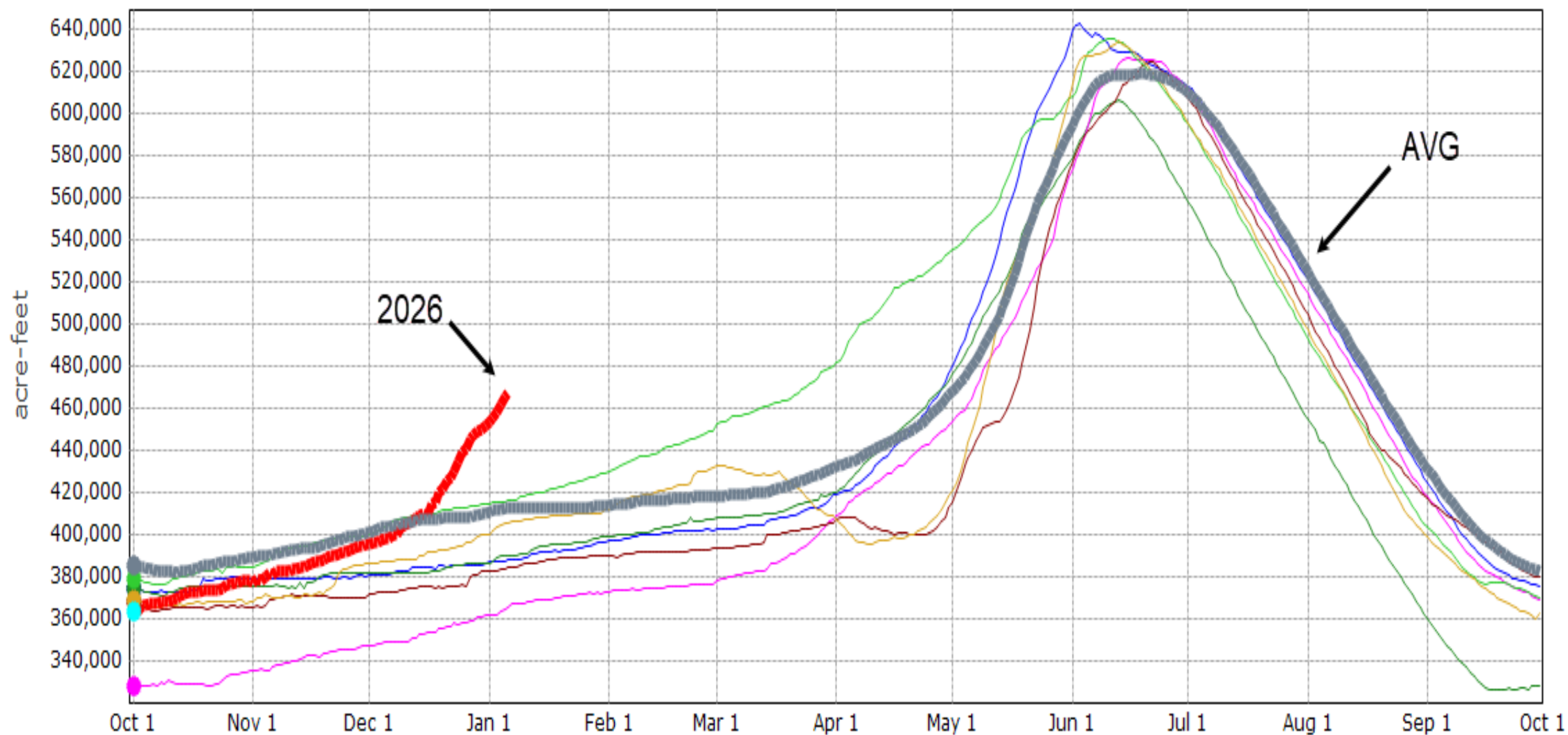


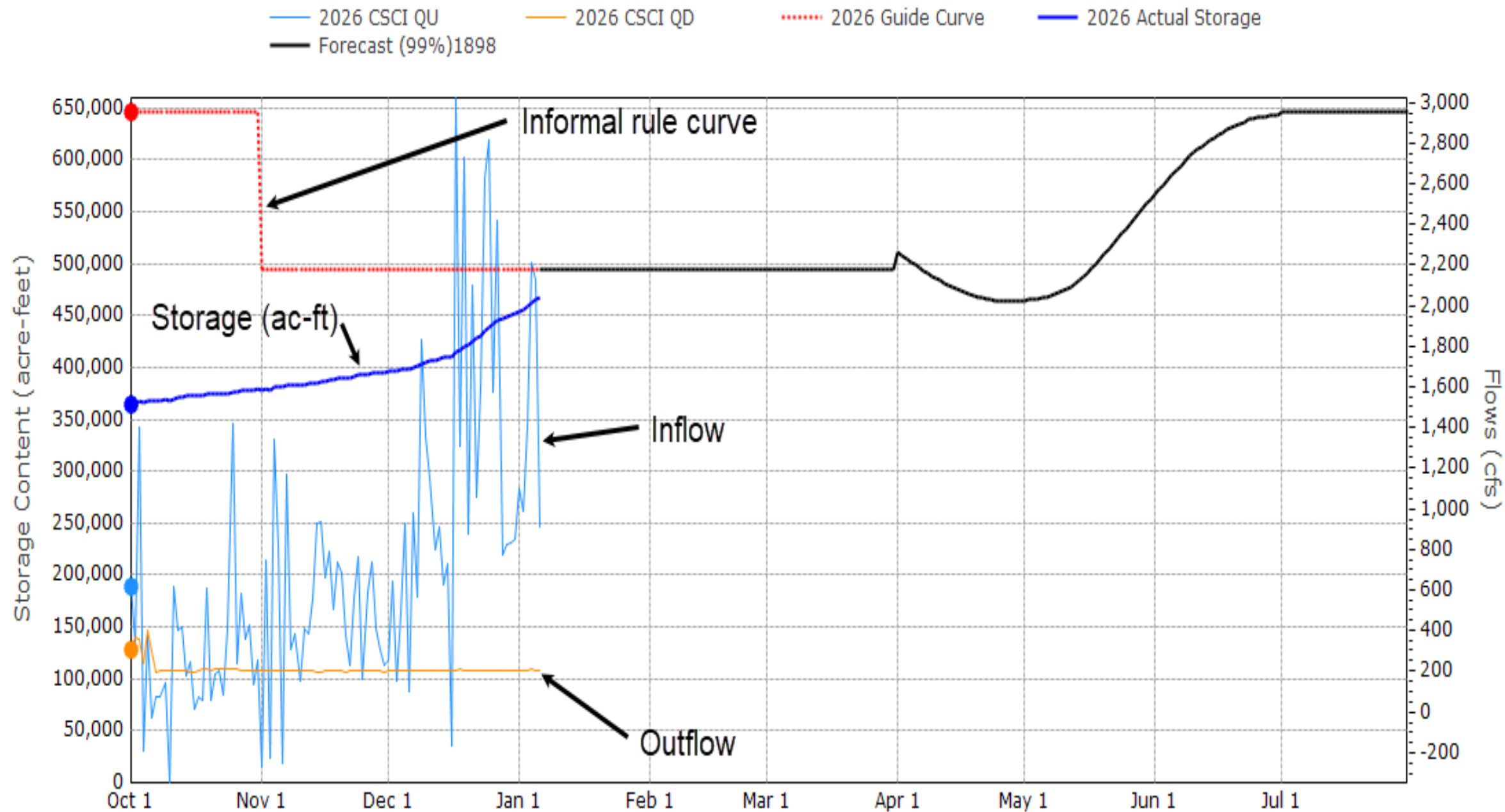
Cascade Dam and Lake Cascade at Cascade, Idaho, Elevation: 4828 ft



Cascade Dam and Lake Cascade at Cascade, Idaho, Elevation: 4828 ft

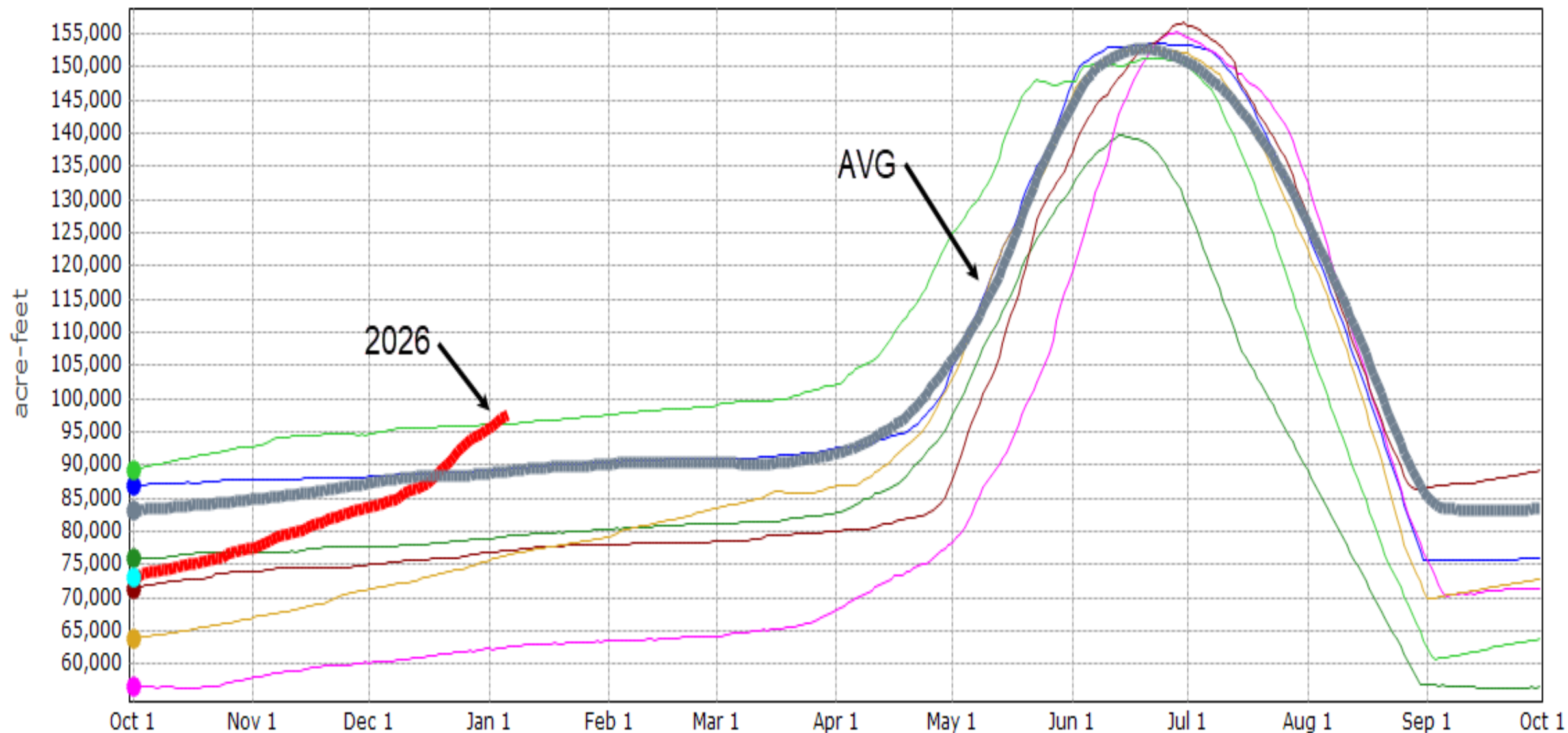
— 2020 — 2021 — 2022 — 2023 — 2024 — 2025 ■ 2026 — avg



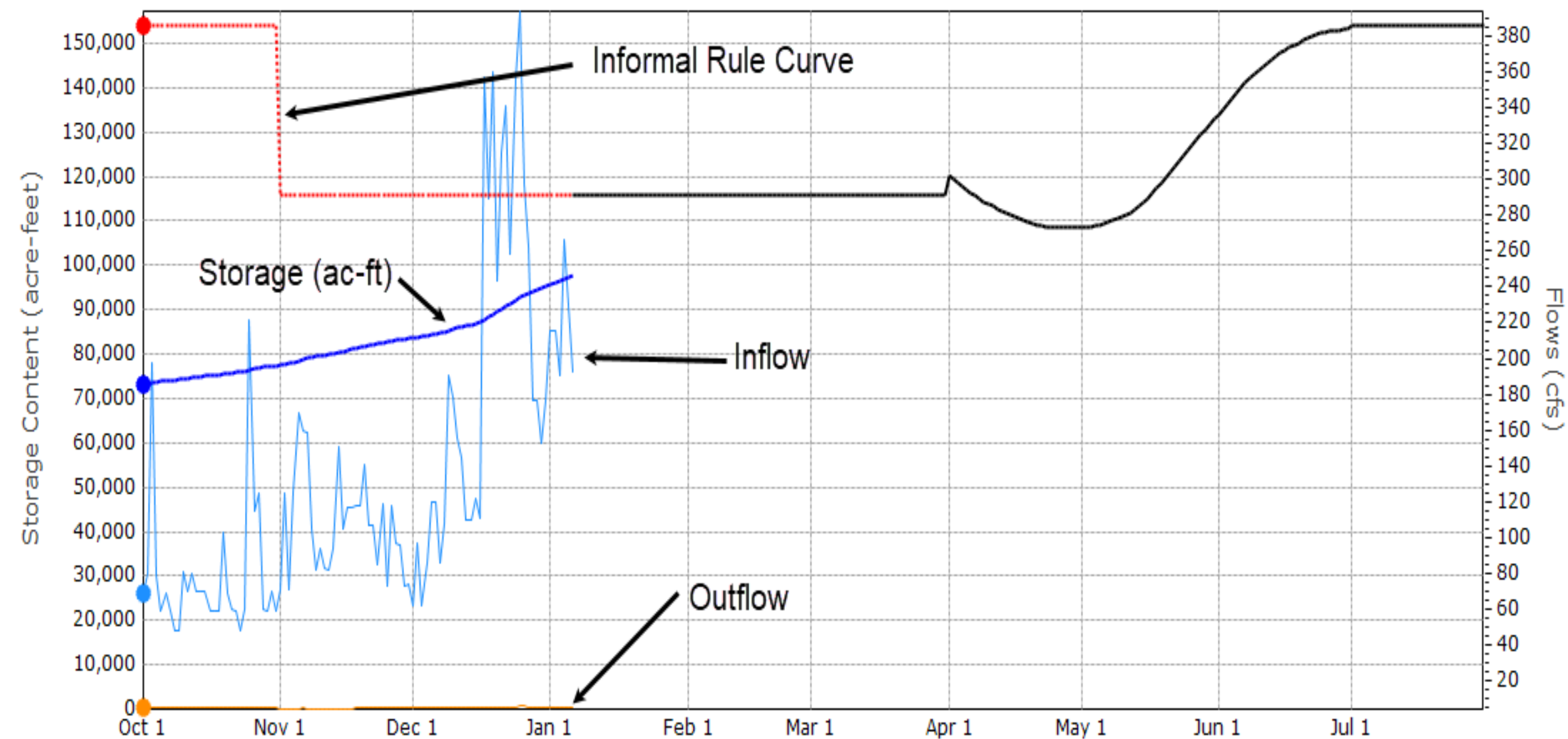


Deadwood Dam, Idaho, Elevation: 5334 ft

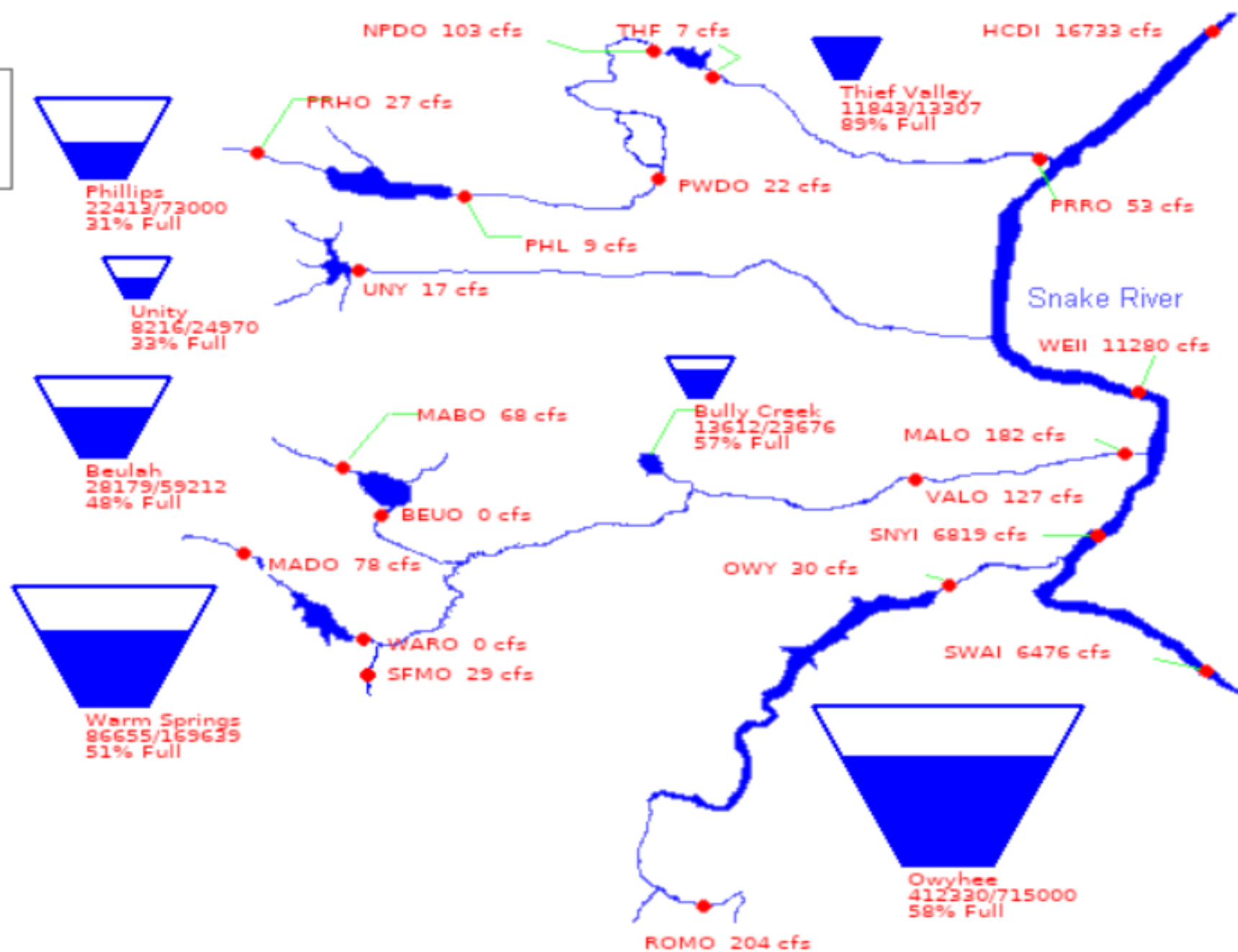
— 2020 — 2021 — 2022 — 2023 — 2024 — 2025 — 2026 — avg



2026 DEDI QU 2026 DEDI QD 2026 Guide Curve 2026 Actual Storage
Forecast (99%)1898

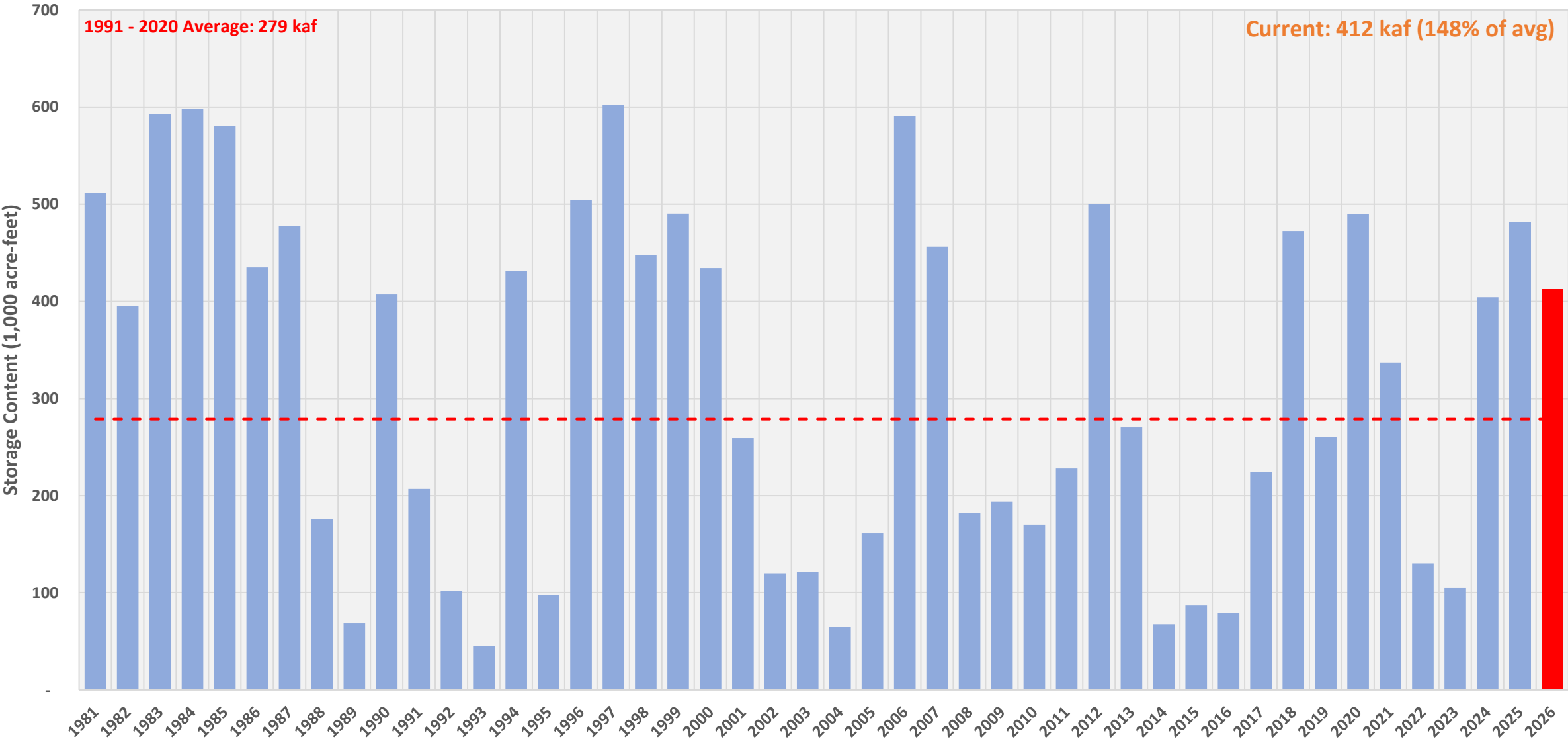


01/13/2026



Owyhee Storage Content - Jan 13, 2026

Series7 Current Series1



CURRENT MONTHLY FORECAST SUMMARY
JAN 1, 2026

FORECAST POINT	FORECAST PERIOD	1991-2020 AVERAGE (KAF)	FORECAST (KAF)	PERCENT NORMAL
ANDERSON	JAN-JUL	550	554	101%
BAKER	JAN-JUL	71	50	70%
BEULAH	JAN-JUN	80	54	68%
*** BOISE	JAN-JUL	1566	1500	96%
BULLY CREEK	JAN-JUN	30	9	30%
CASCADE	JAN-JUL	601	574	95%
DEADWOOD	JAN-JUL	143	142	100%
HORSESHOE BEND	JAN-JUL	1880	1898	101%
OWYHEE	JAN-JUN	529	202	38%
WARM SPRINGS	JAN-JUN	117	69	59%
UNITY	JAN-JUL	50	36	72%
MANN CREEK	JAN-JUN	26	21	81%

*** Coordinated with USACE