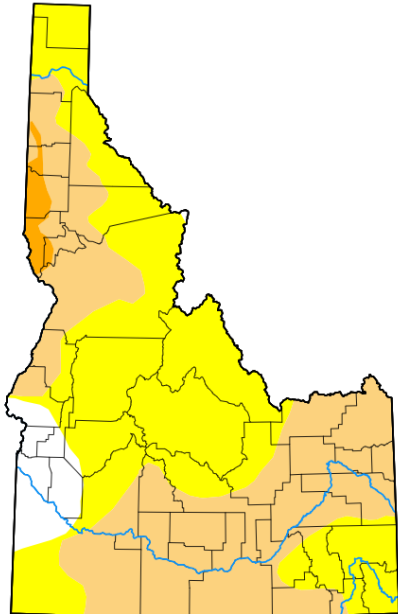


# January Water Supply Meeting

Prepared by David Hoekema  
Presented by Hannah Adams  
Idaho Department of Water Resources



Map released: Thurs. January 15, 2026

Data valid: January 13, 2026 at 7 a.m. EST

## Intensity

- ☐ None
- ☒ D0 (Abnormally Dry)
- ☐ D1 (Moderate Drought)
- ☐ D2 (Severe Drought)
- ☐ D3 (Extreme Drought)
- ☐ D4 (Exceptional Drought)
- ☐ No Data

## Authors

United States and Puerto Rico Author(s):

[Brian Fuchs](#), National Drought Mitigation Center

Pacific Islands and Virgin Islands Author(s):

[Tsegaye Tadesse](#), National Drought Mitigation Center



Jan-2024

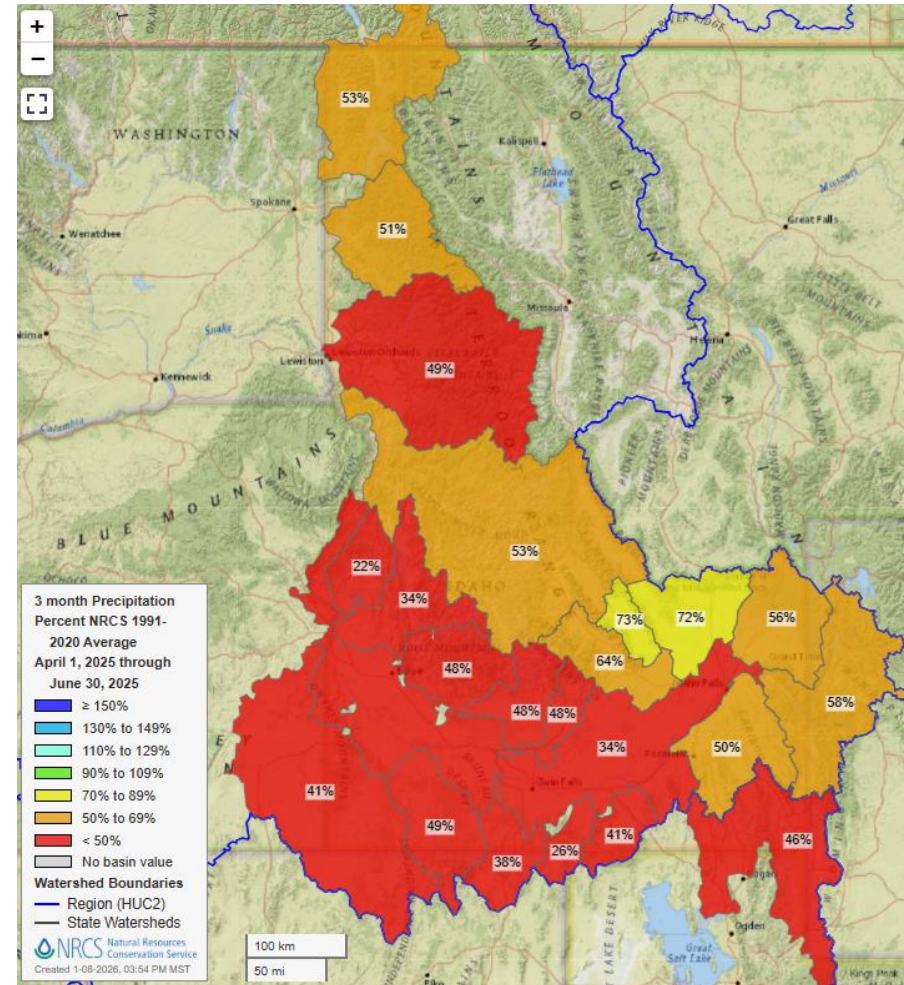
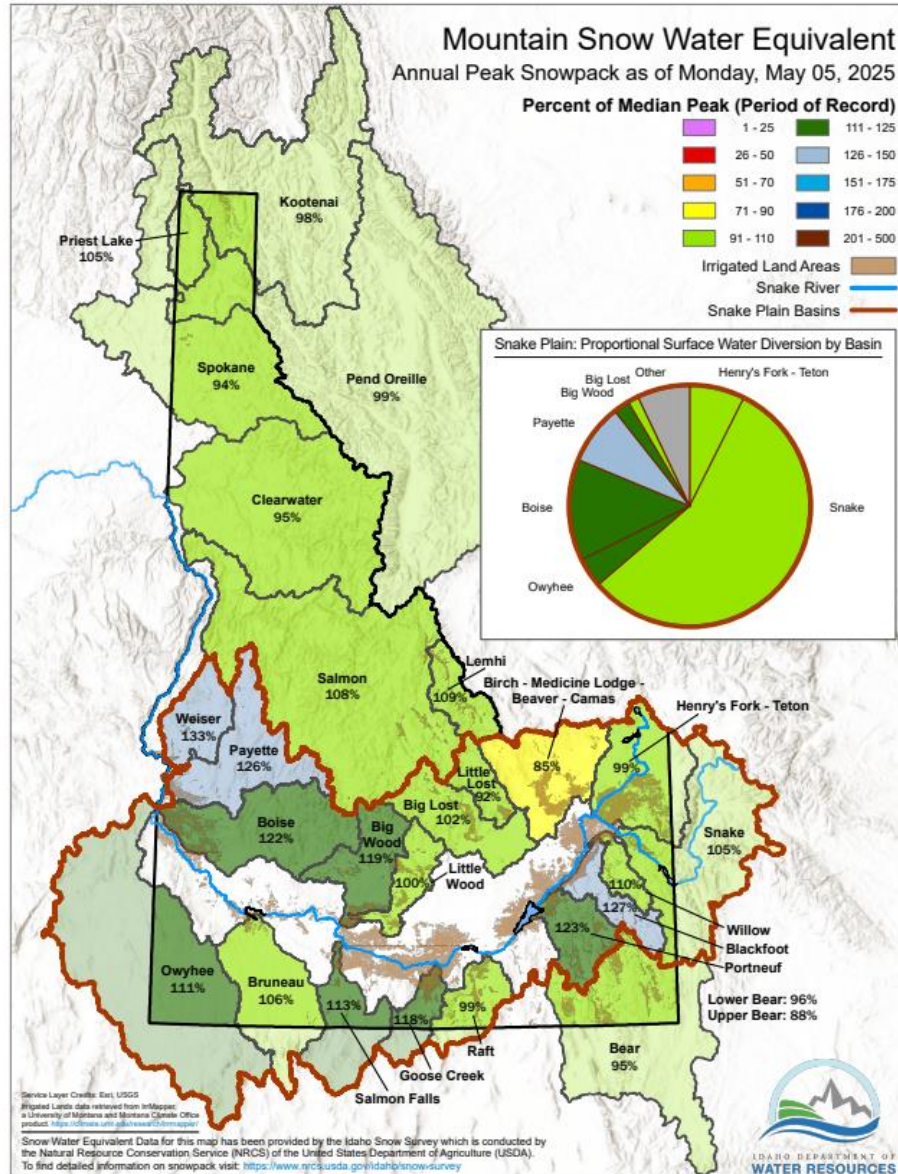


Thanksgiving 2025



New Years 2026





# The Story of Water-Year 2025

An Extremely Dry Spring

3.1 percentile  
5<sup>th</sup> driest

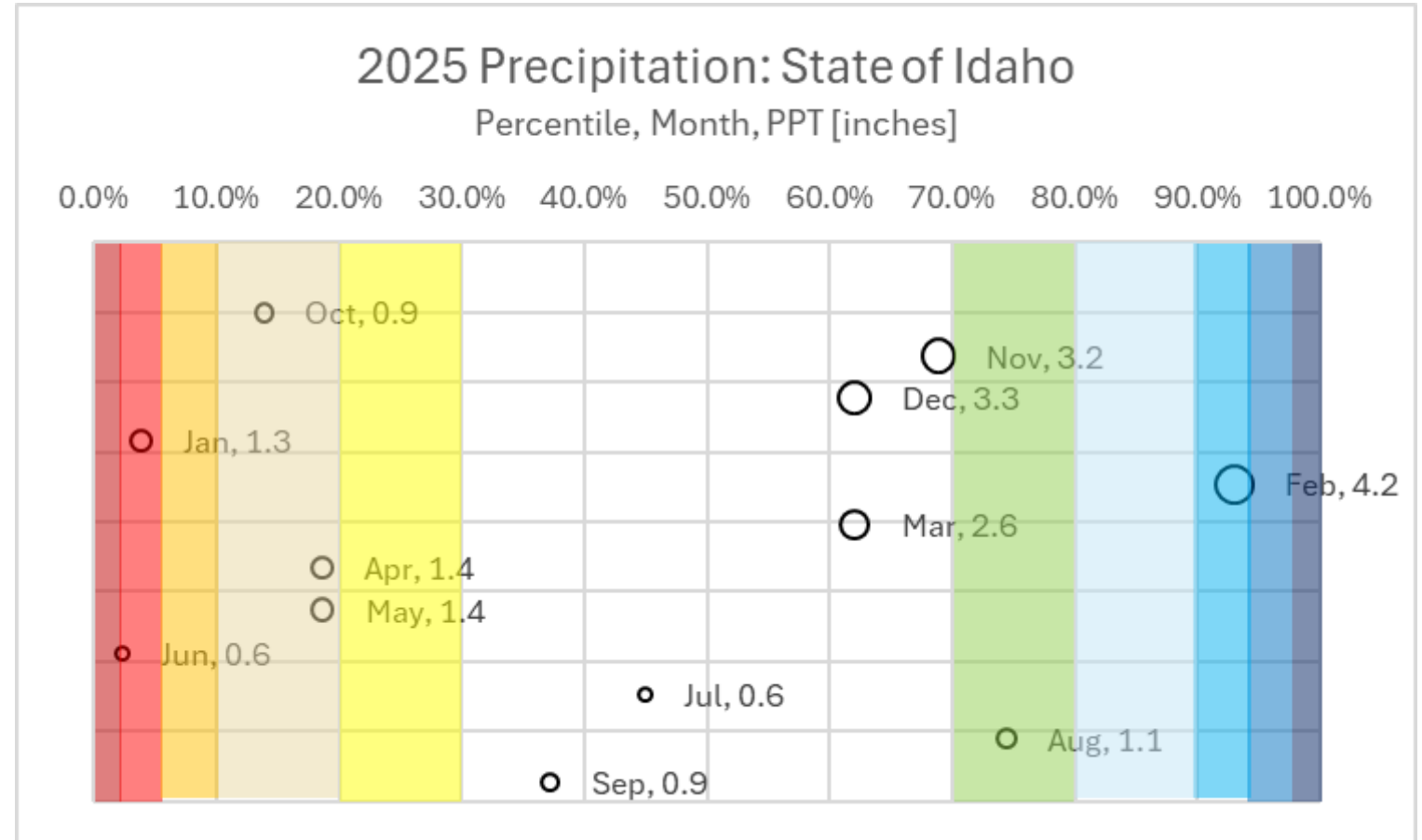
1919 = 3.0"

**1924 = 2.1"**

1931 = 3.2"

2021 = 2.8"

2025 = 3.3 "



# The Story of Water-Year 2025

An Extremely Dry Spring

3.1 percentile  
5<sup>th</sup> driest

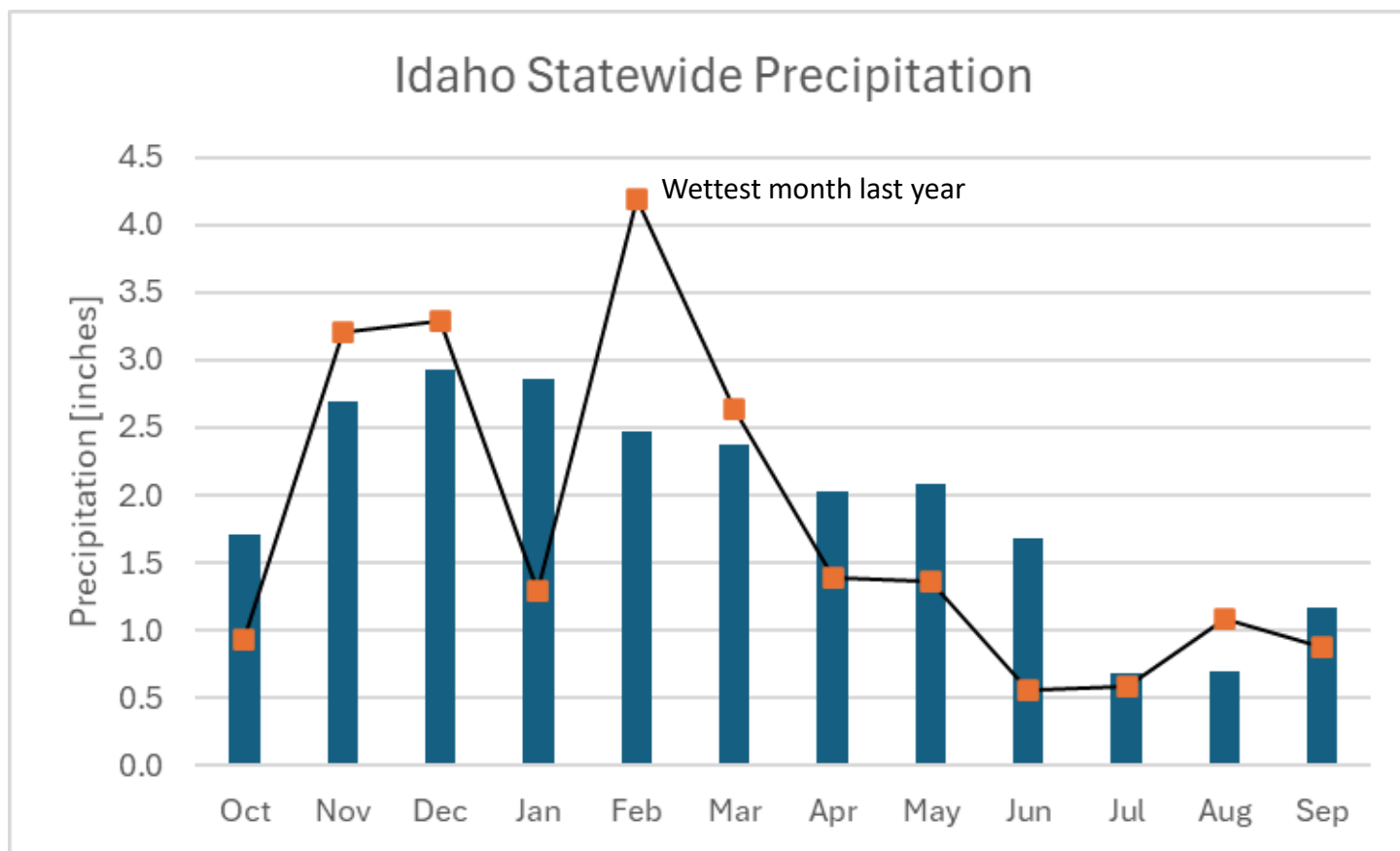
1919 = 3.0"

**1924 = 2.1"**

1931 = 3.2"

2021 = 2.8"

2025 = 3.3 "



Bars are average annual precipitation (1991-2020)



# The Story of Water-Year 2025

Exceptionally Warm Year

97.6<sup>th</sup> percentile

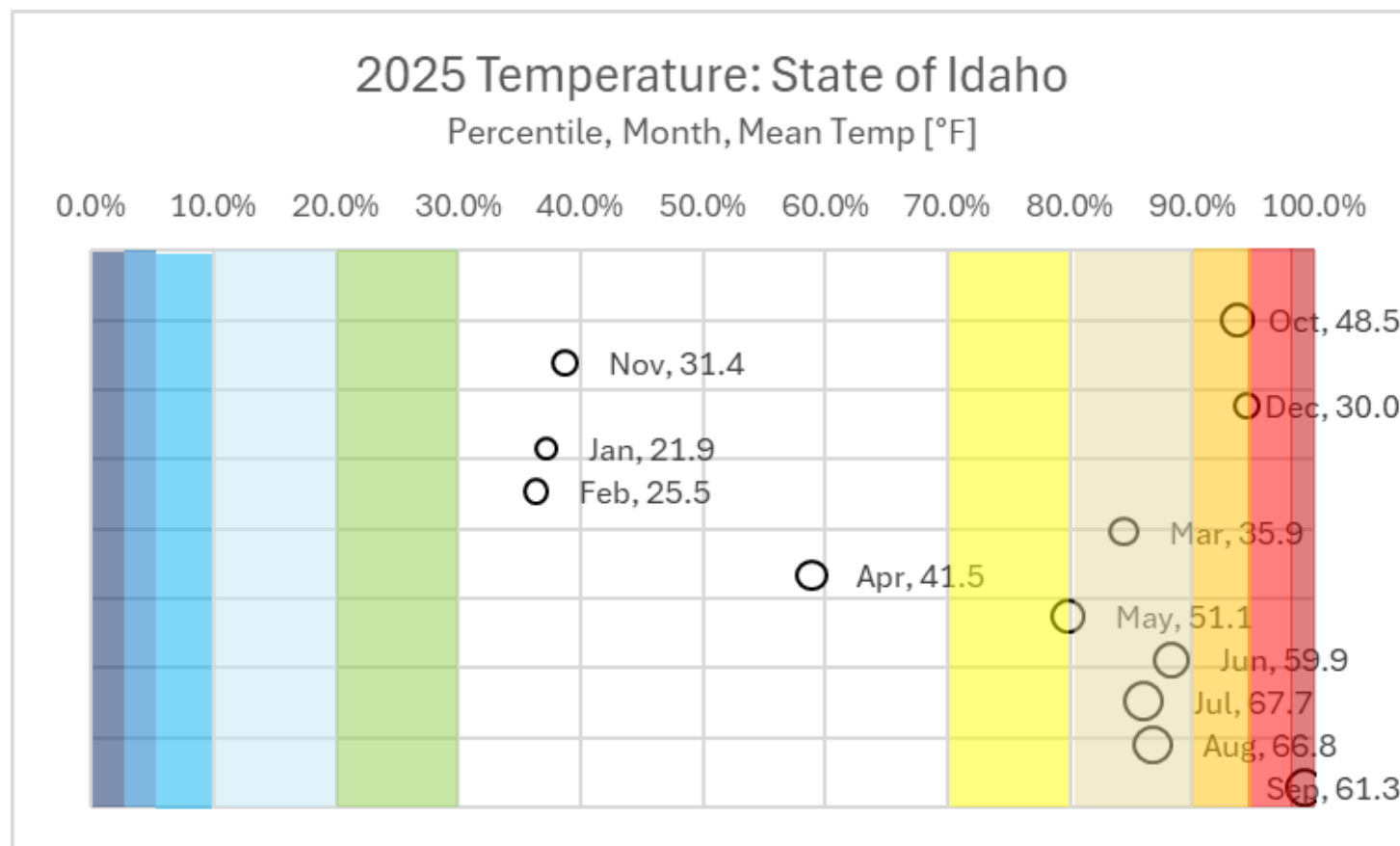
4<sup>th</sup> warmest

**1934 = 47.3°F**

1940 = 45.9°F

2015 = 46.4°F

2025 = 45.3°F



# The Story of Water-Year 2025

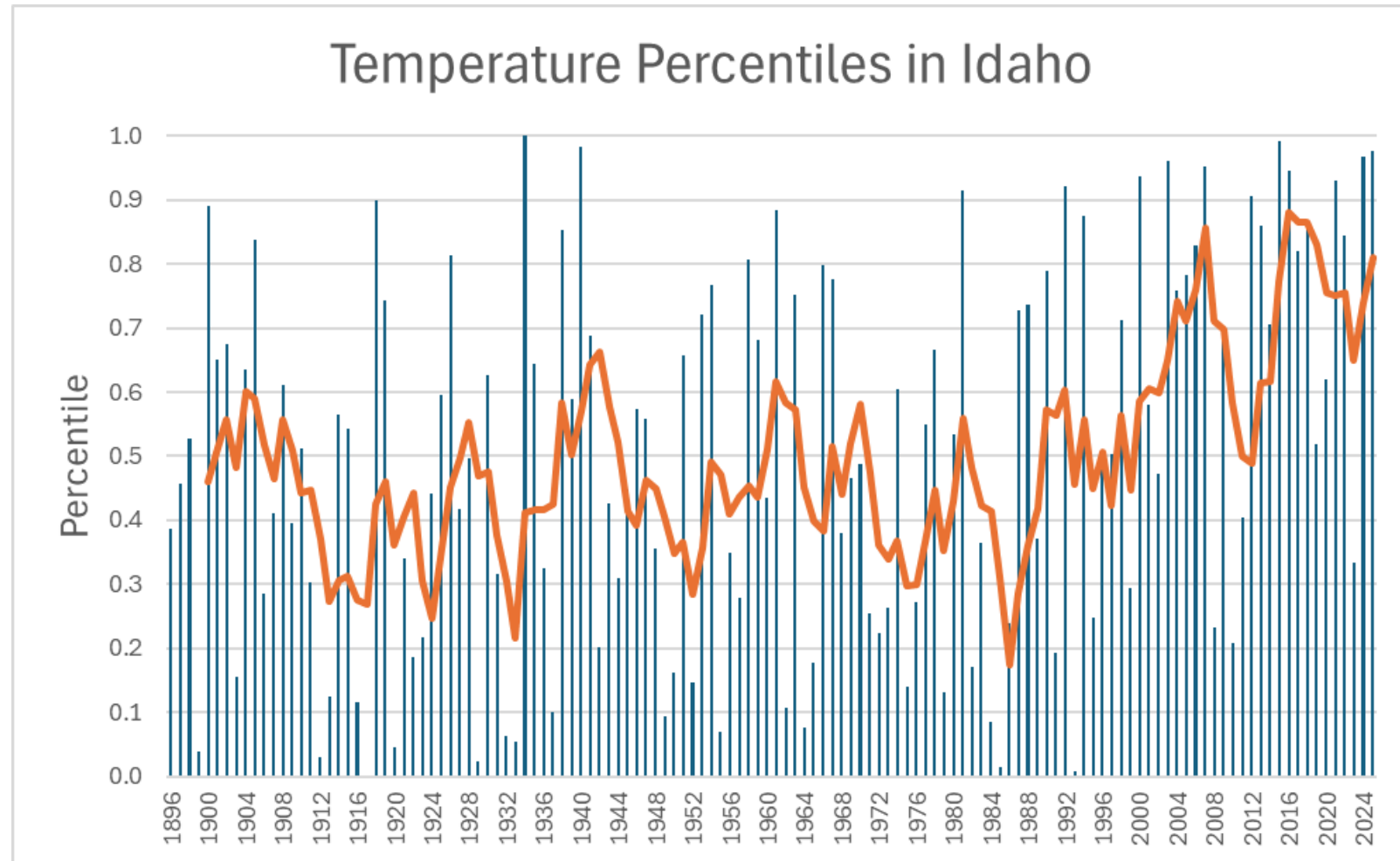
Exceptionally Warm Year  
97.6<sup>th</sup> percentile  
4<sup>th</sup> warmest

**1934 = 47.3°F**

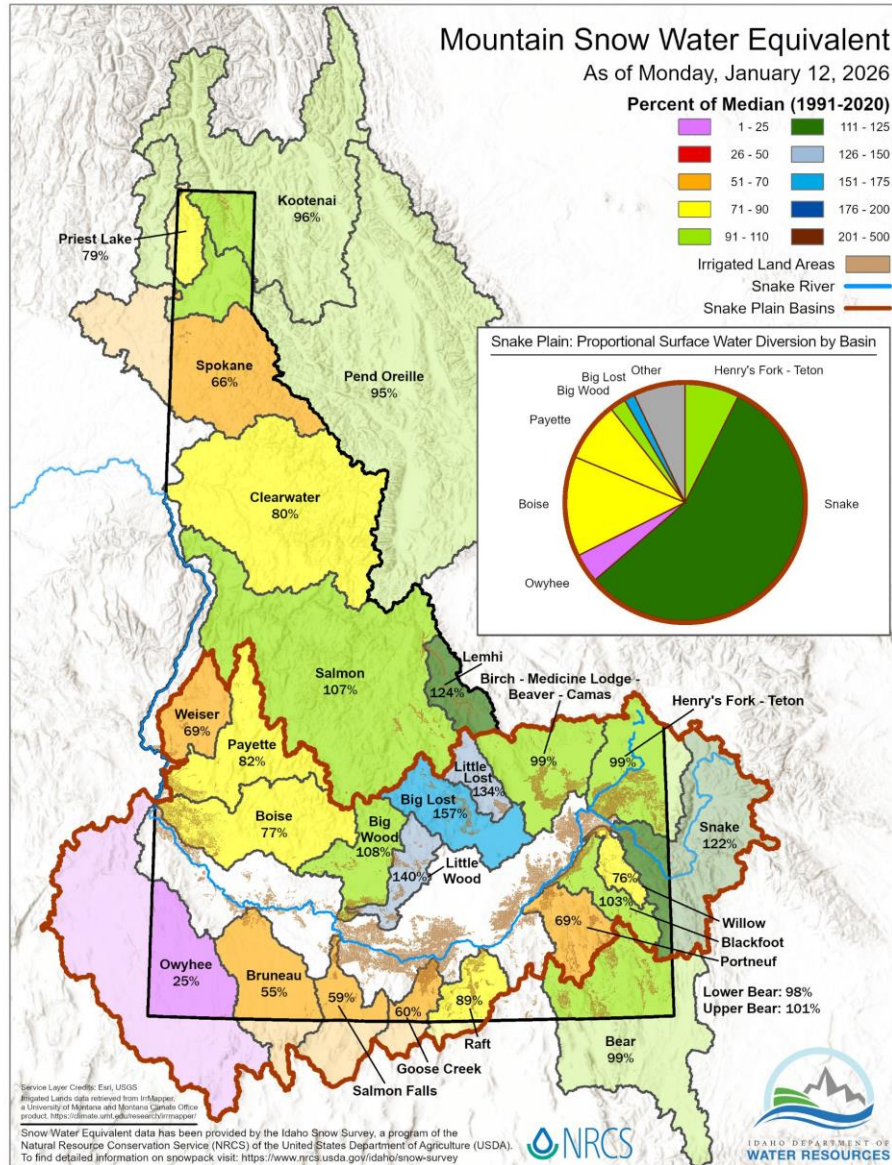
1940 = 45.9°F

2015 = 46.4°F

2025 = 45.3°F

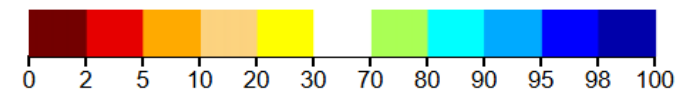
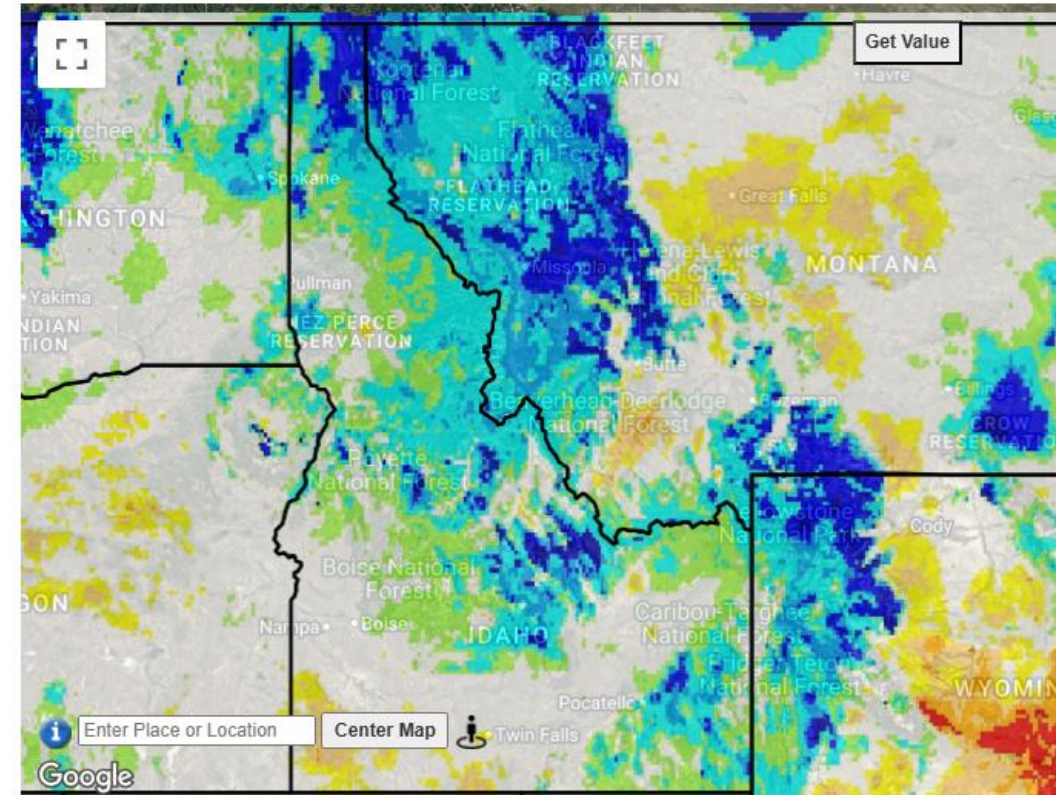






## Potential Water Deficit (PPT-ET<sub>o</sub>) Percentile from Distribution of Past Observations (gridMET)

2025-10-01 to 2026-01-10, Total, vs. 1981 - 2010










Potential Water Deficit (PPT-ET<sub>o</sub>) (%)

## Idaho Drought Monitor

Map released: Thurs. January 15, 2026

Data valid: January 13, 2026 at 7 a.m. EST

### Intensity

-  None
-  D0 (Abnormally Dry)
-  D1 (Moderate Drought)
-  D2 (Severe Drought)
-  D3 (Extreme Drought)
-  D4 (Exceptional Drought)
-  No Data

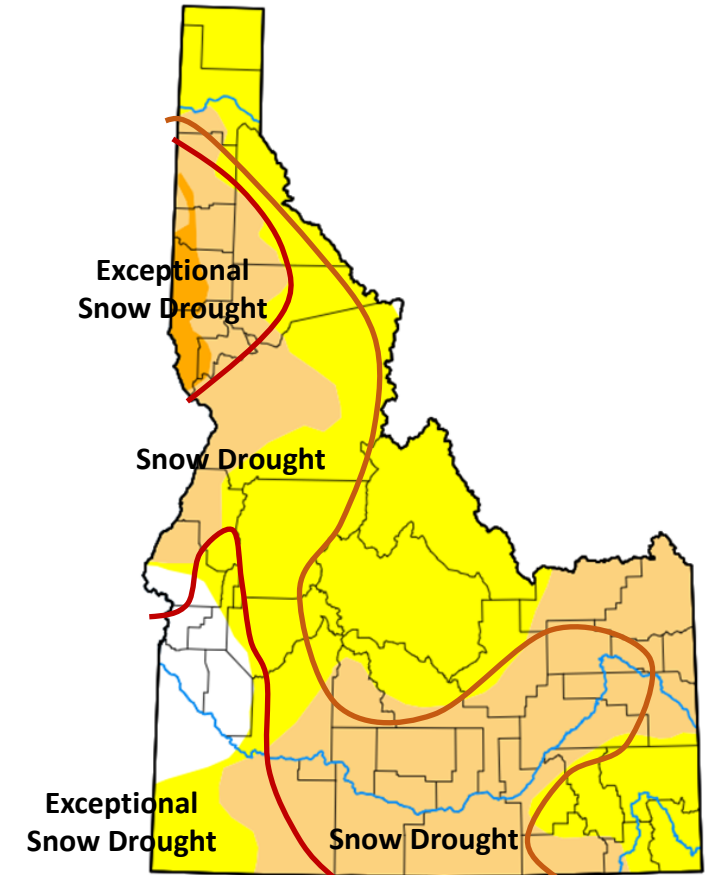
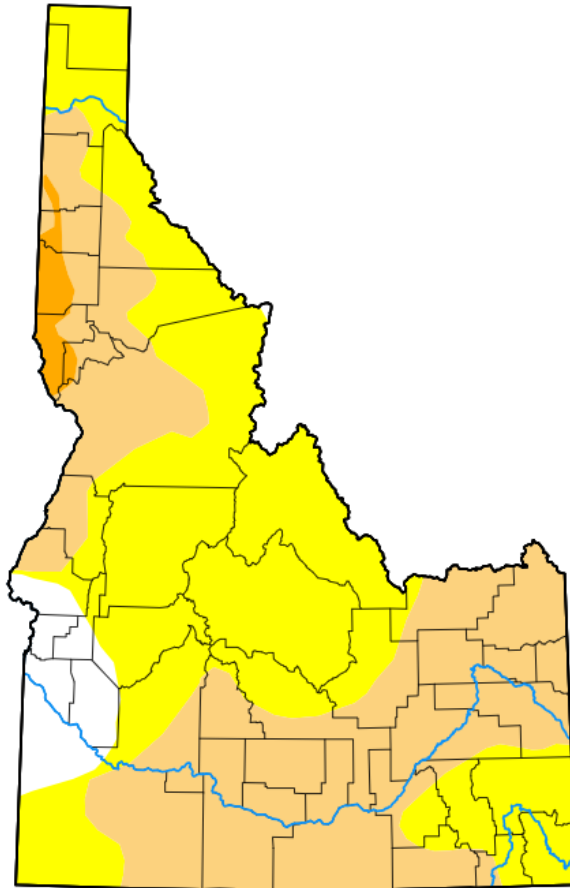
### Authors

United States and Puerto Rico Author(s):

[Brian Fuchs](#), National Drought Mitigation Center

Pacific Islands and Virgin Islands Author(s):

[Tsegaye Tadesse](#), National Drought Mitigation Center





Questions?



**Contact:**

Hannah Adams  
Hydrologist, IDWR