

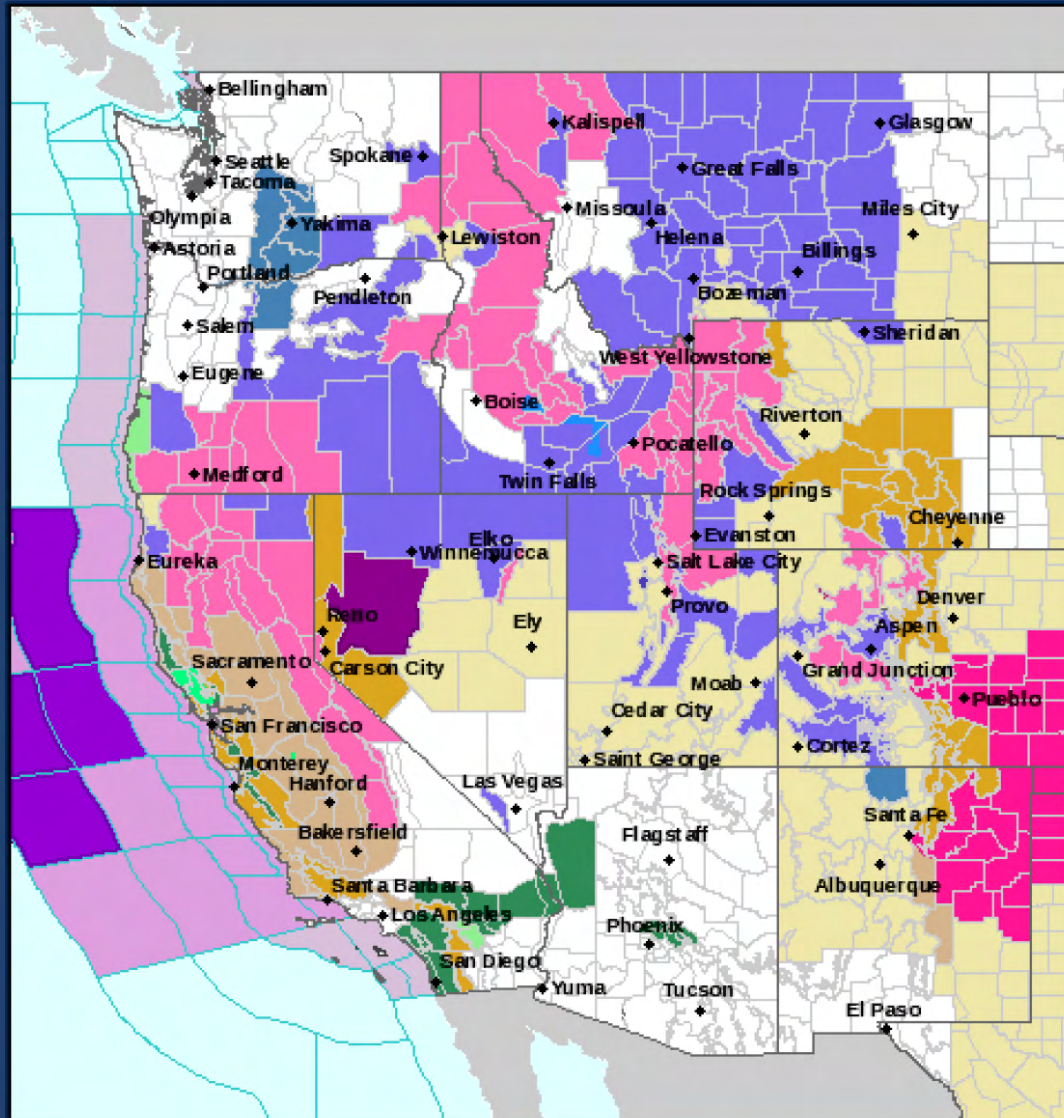
Weather & Climate Outlook

IDWR Water Supply Committee Meeting

February 13, 2019

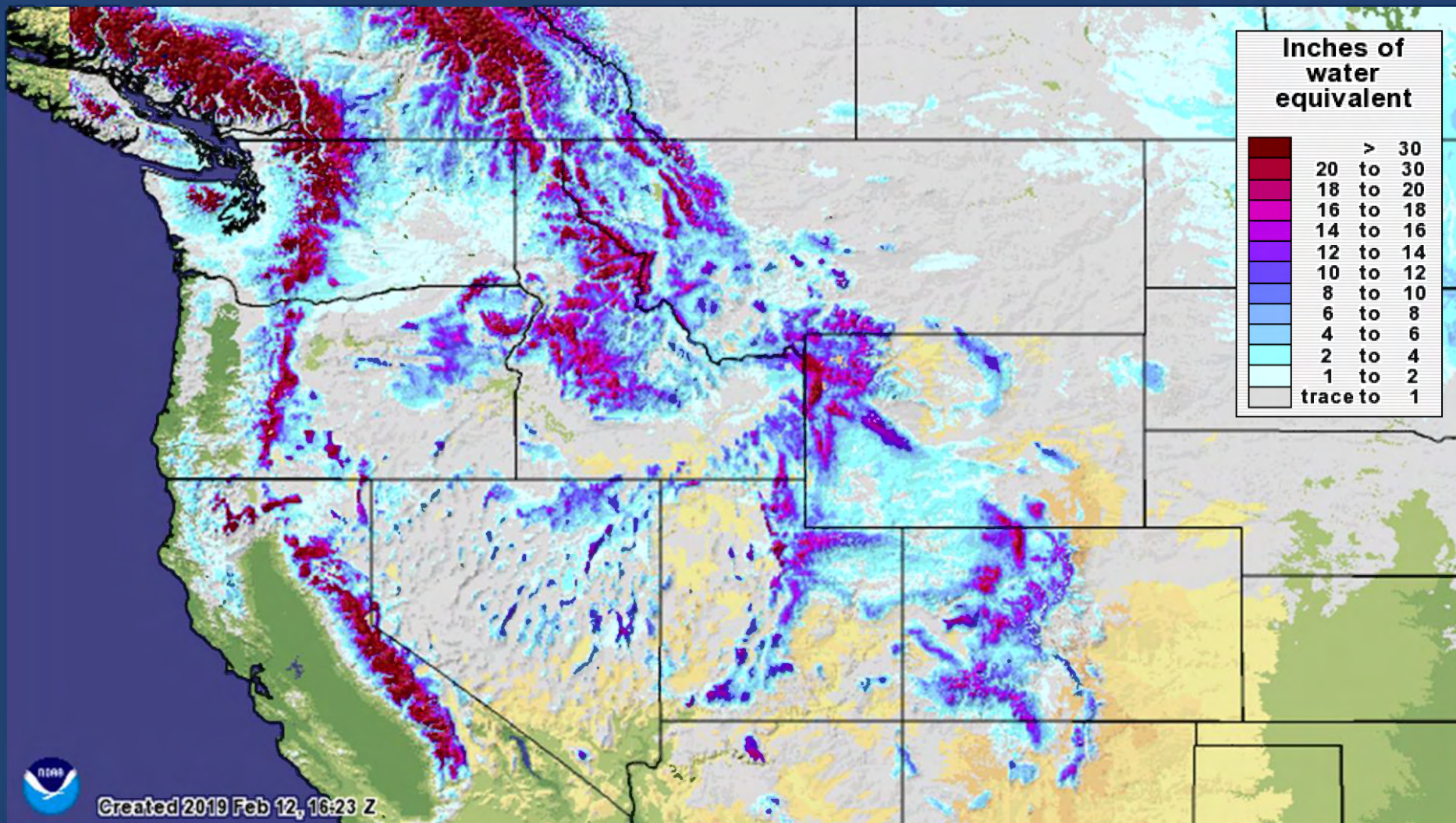


NWS Watches, Warnings & Advisories

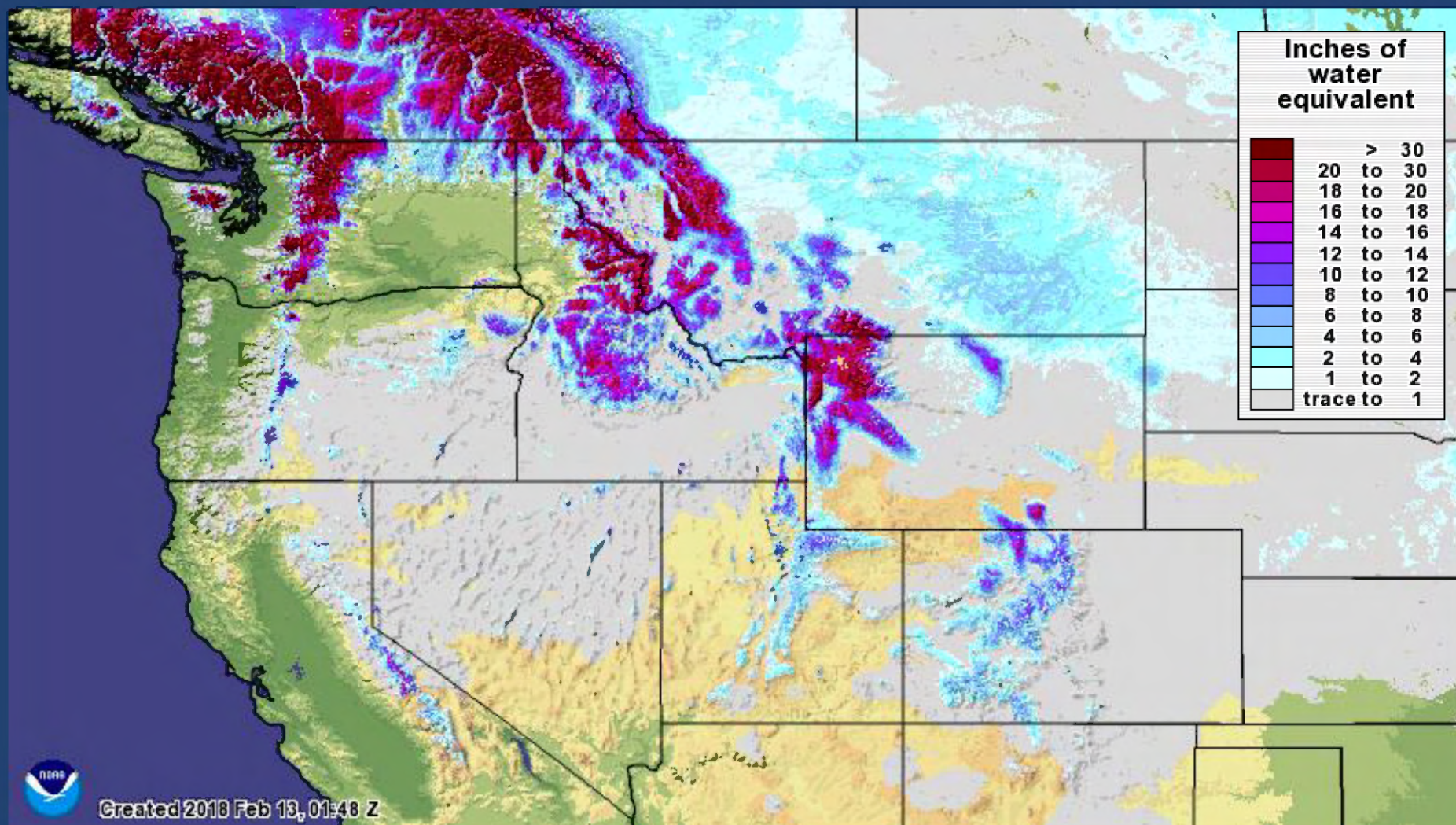


Ice Storm Warning	
Winter Storm Warning	
High Wind Warning	
Storm Warning	
Avalanche Warning	
Flash Flood Watch	
Gale Warning	
Red Flag Warning	
Winter Weather Advisory	
Flood Advisory	
Small Craft Advisory For Hazardous Seas	
Small Craft Advisory For Rough Bar	
Small Craft Advisory	
Hazardous Seas Warning	
Wind Advisory	
Avalanche Watch	
Winter Storm Watch	
Flood Watch	

Current Snowpack

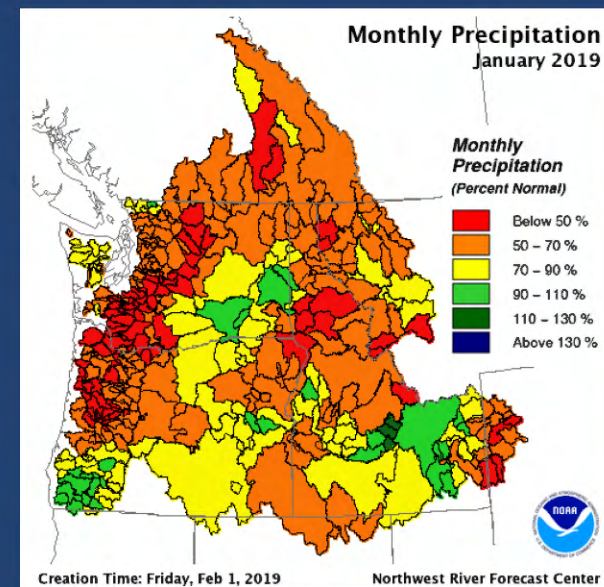
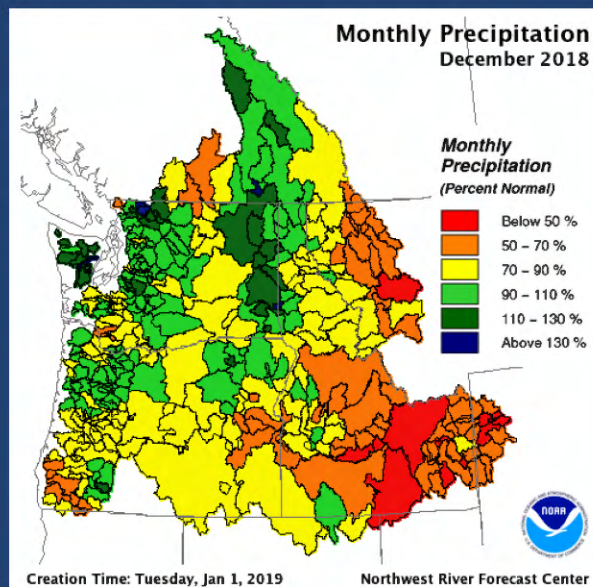
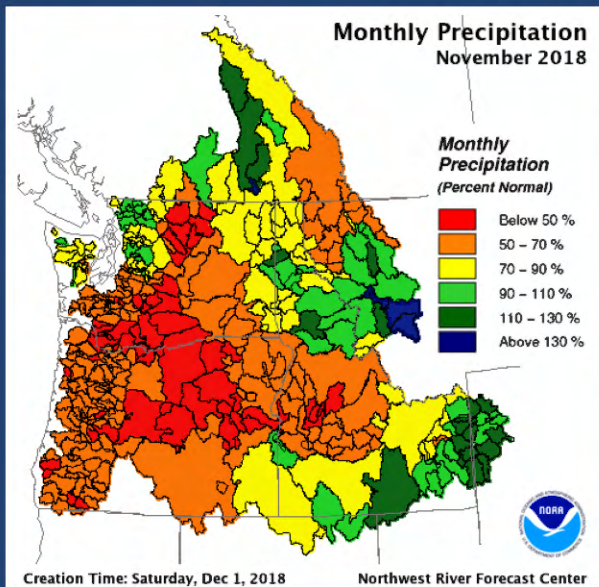
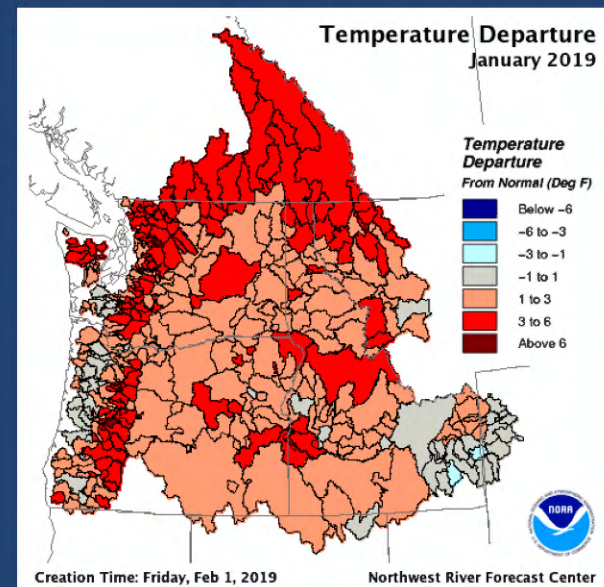
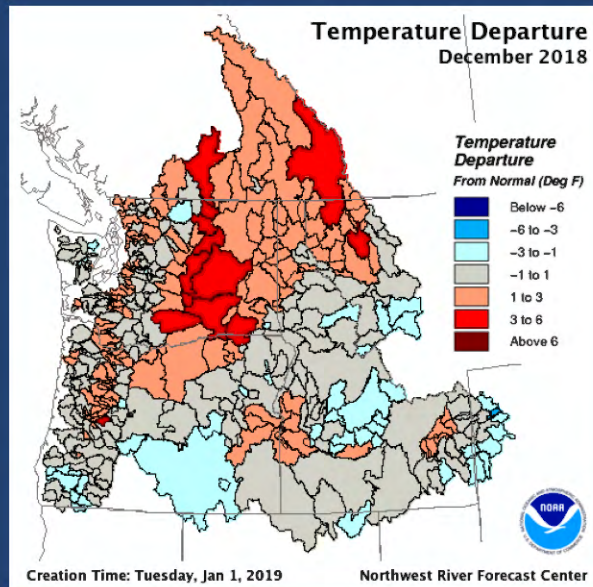
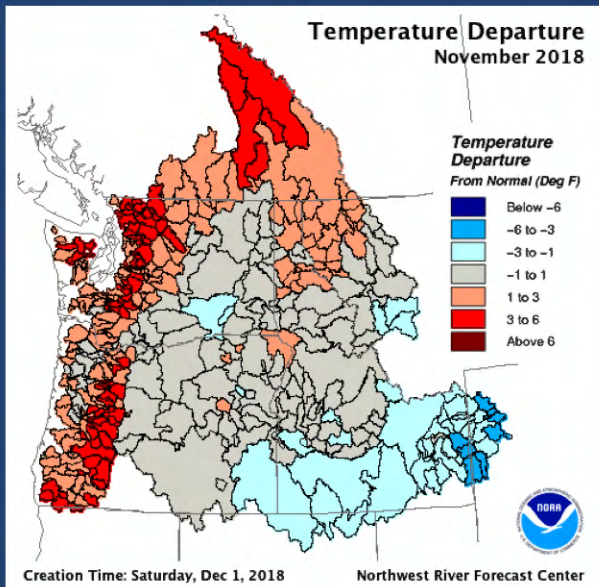


2018 Snowpack



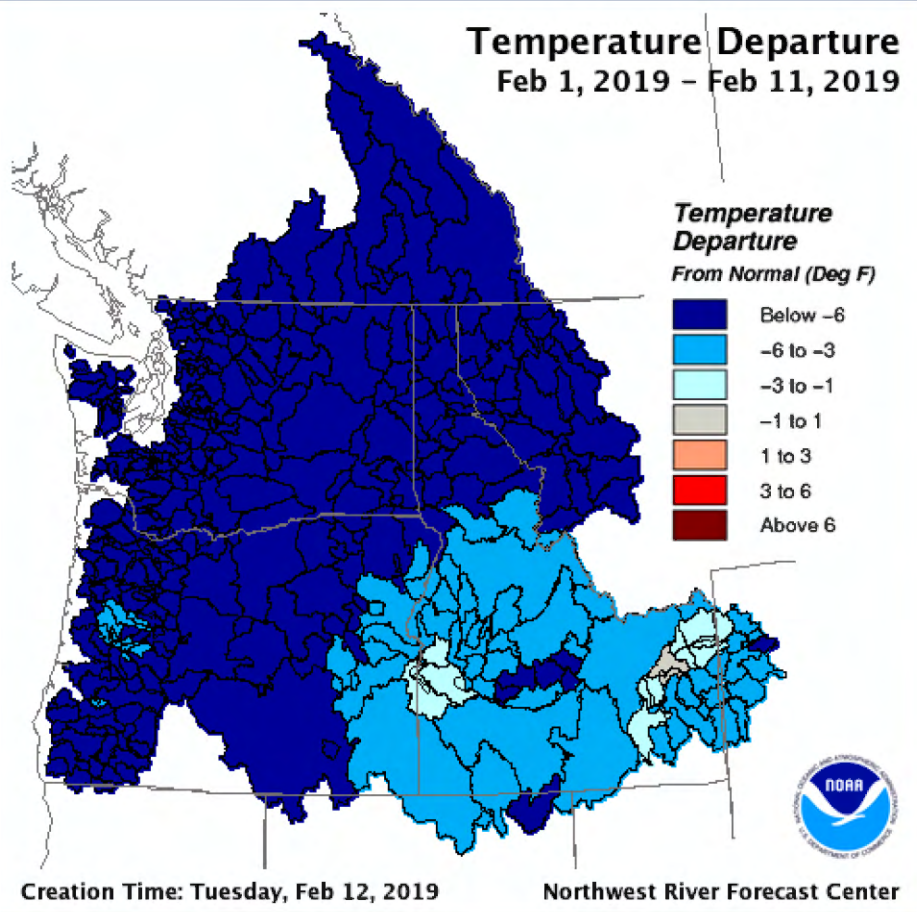
Monthly Temperature & Precipitation

Water Year 2019

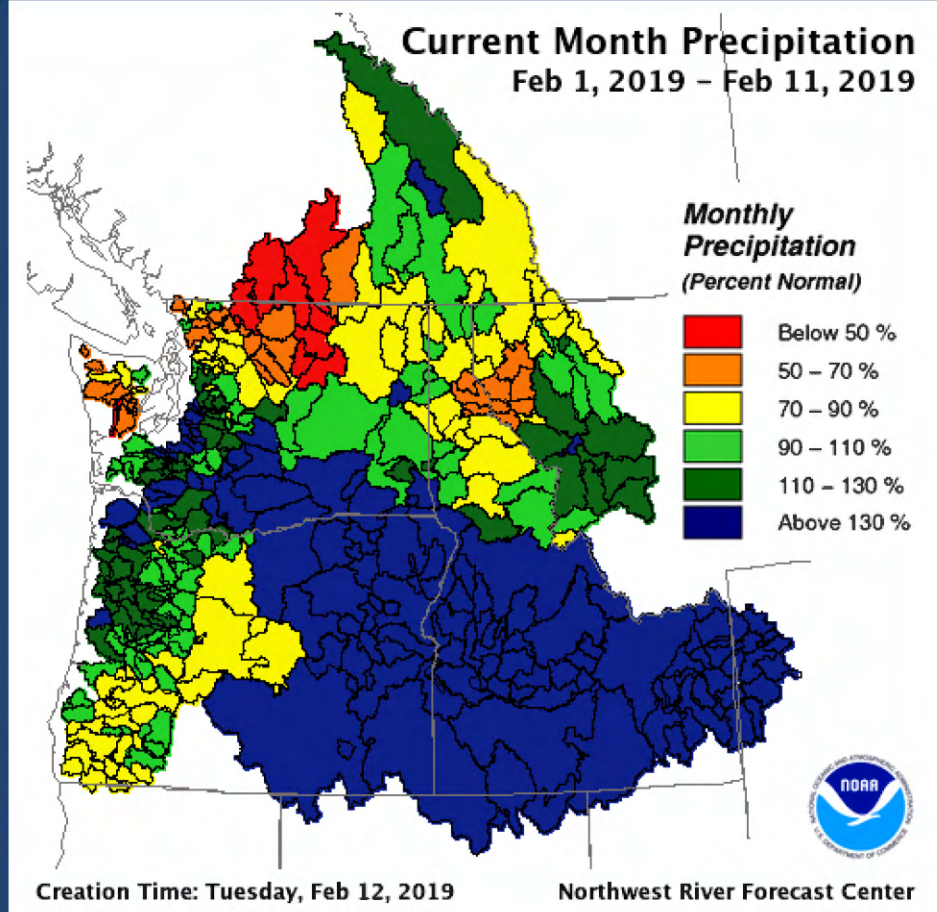


Temperature & Precipitation January, 2019

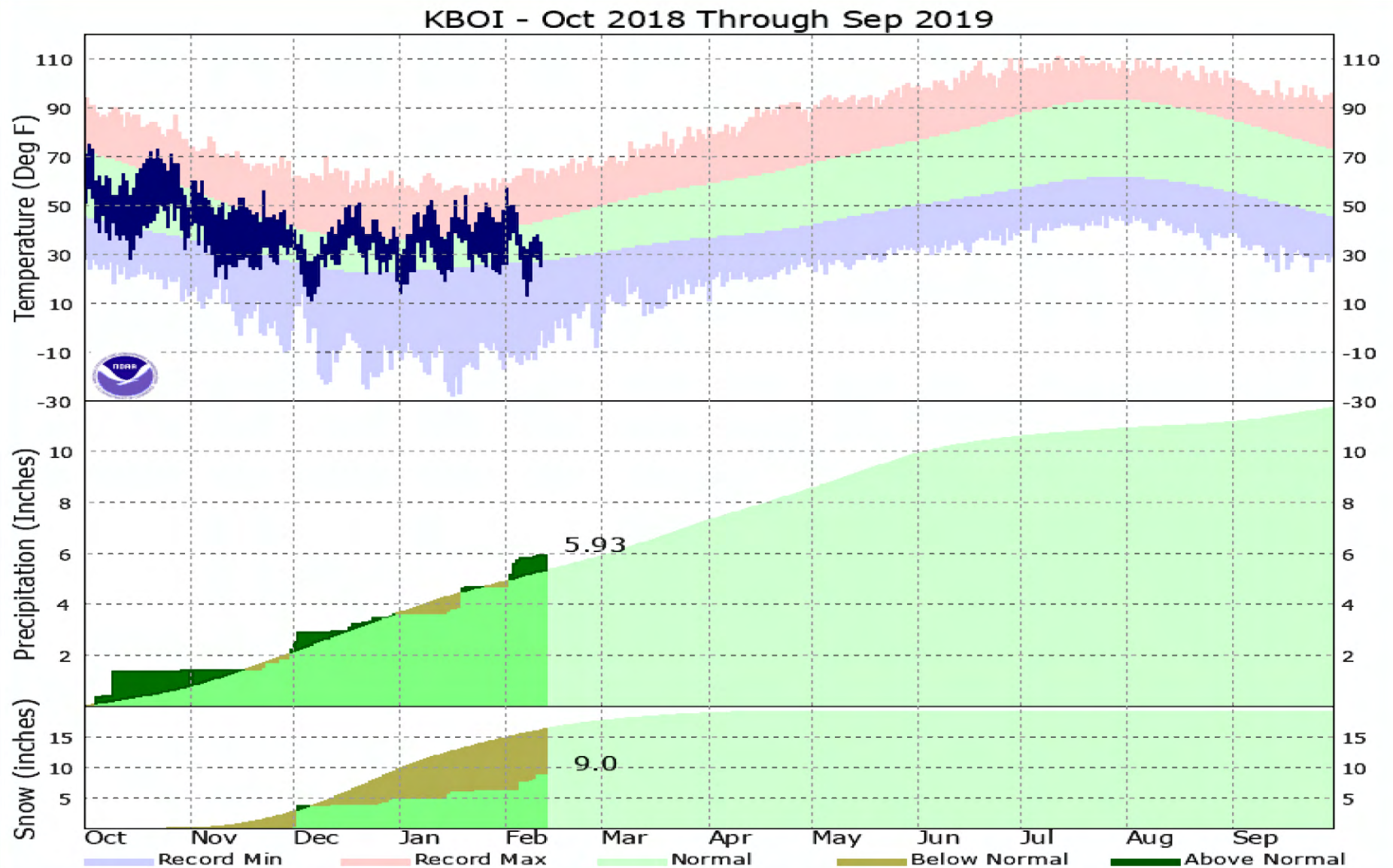
Temperature Departure
Feb 1, 2019 – Feb 11, 2019



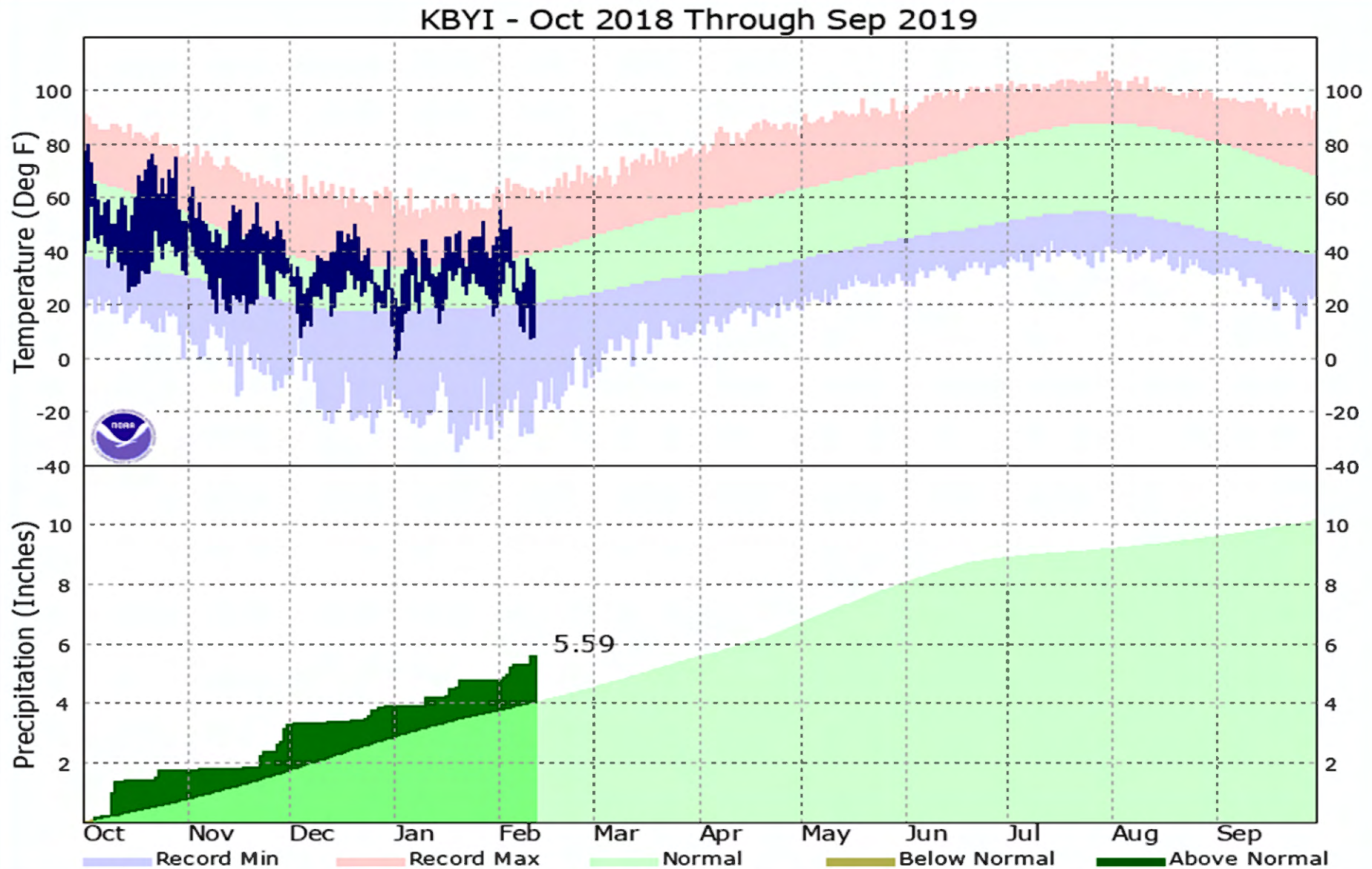
Current Month Precipitation
Feb 1, 2019 – Feb 11, 2019



Temperature and Precipitation at Boise

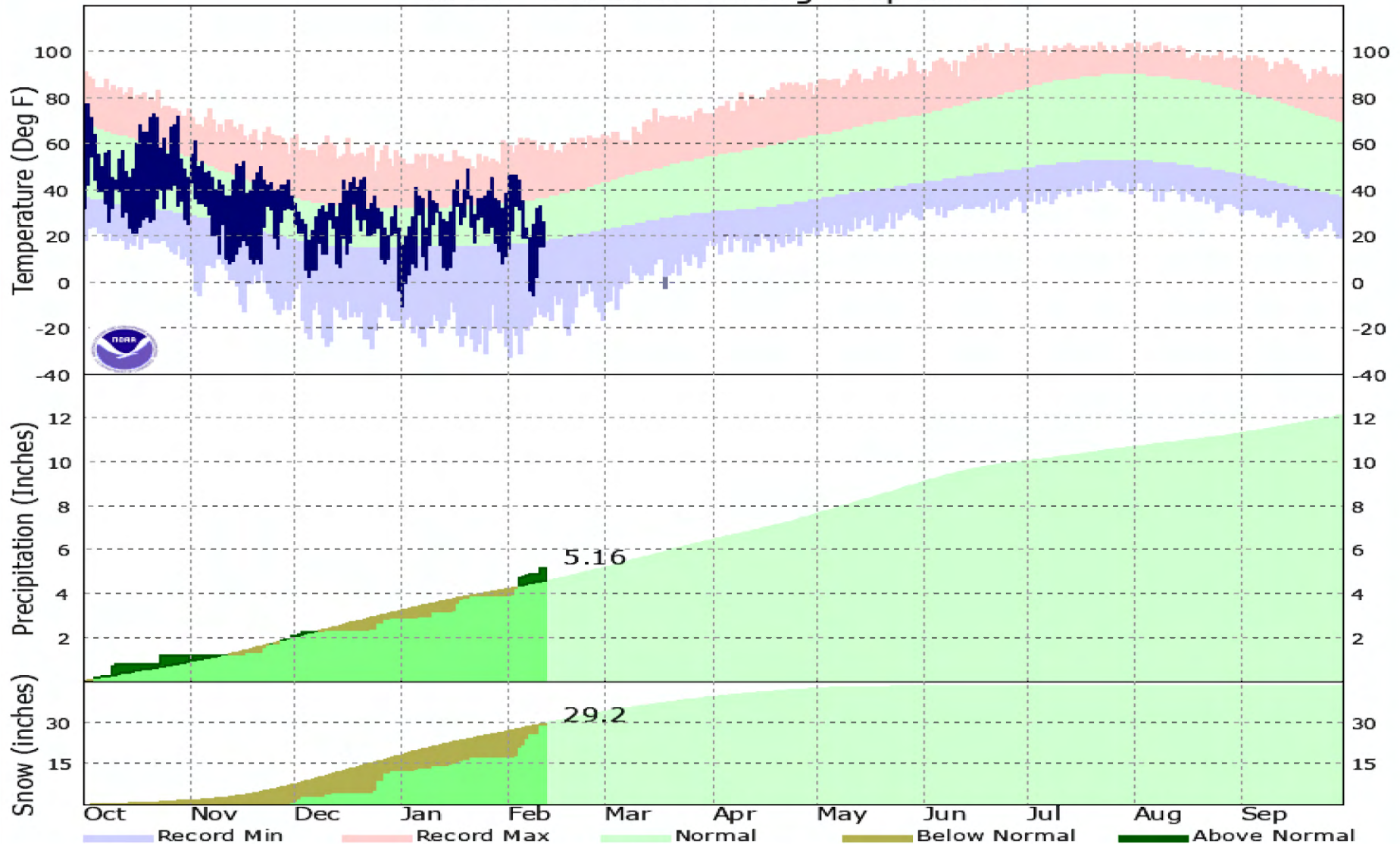


Temperature and Precipitation at Burley



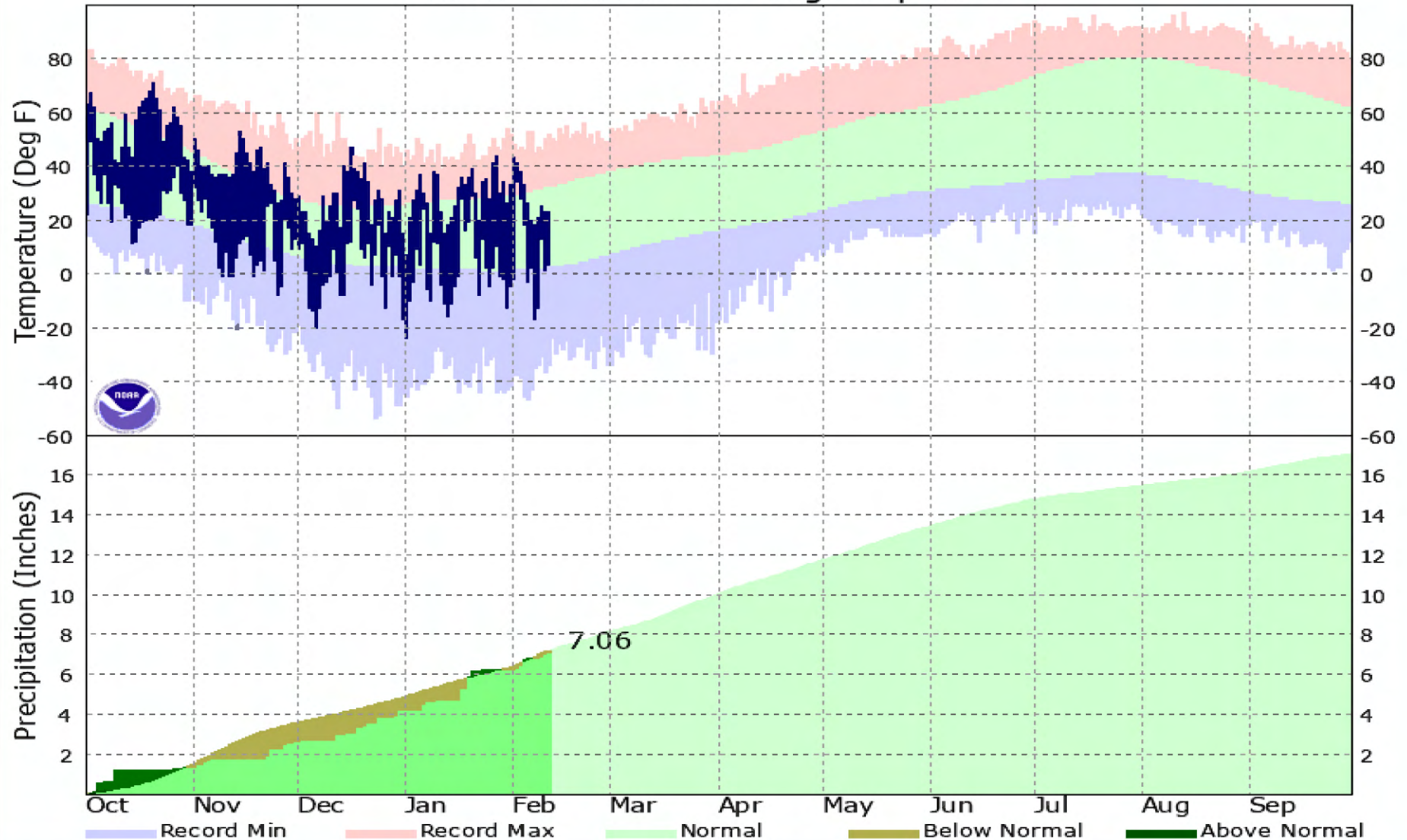
Temperature and Precipitation at Pocatello

KPIH - Oct 2018 Through Sep 2019



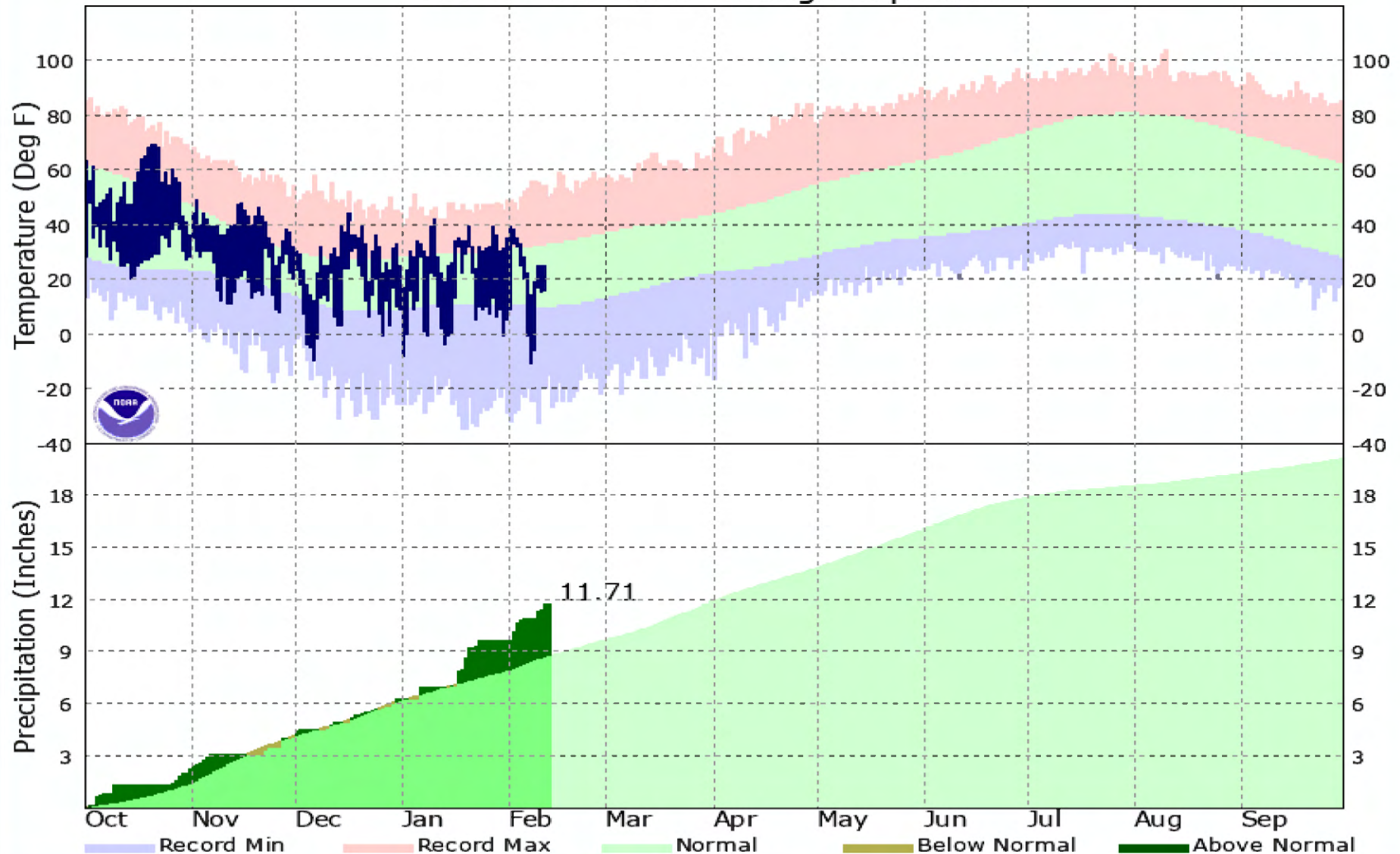
Temperature and Precipitation at Stanley

KSNT - Oct 2018 Through Sep 2019

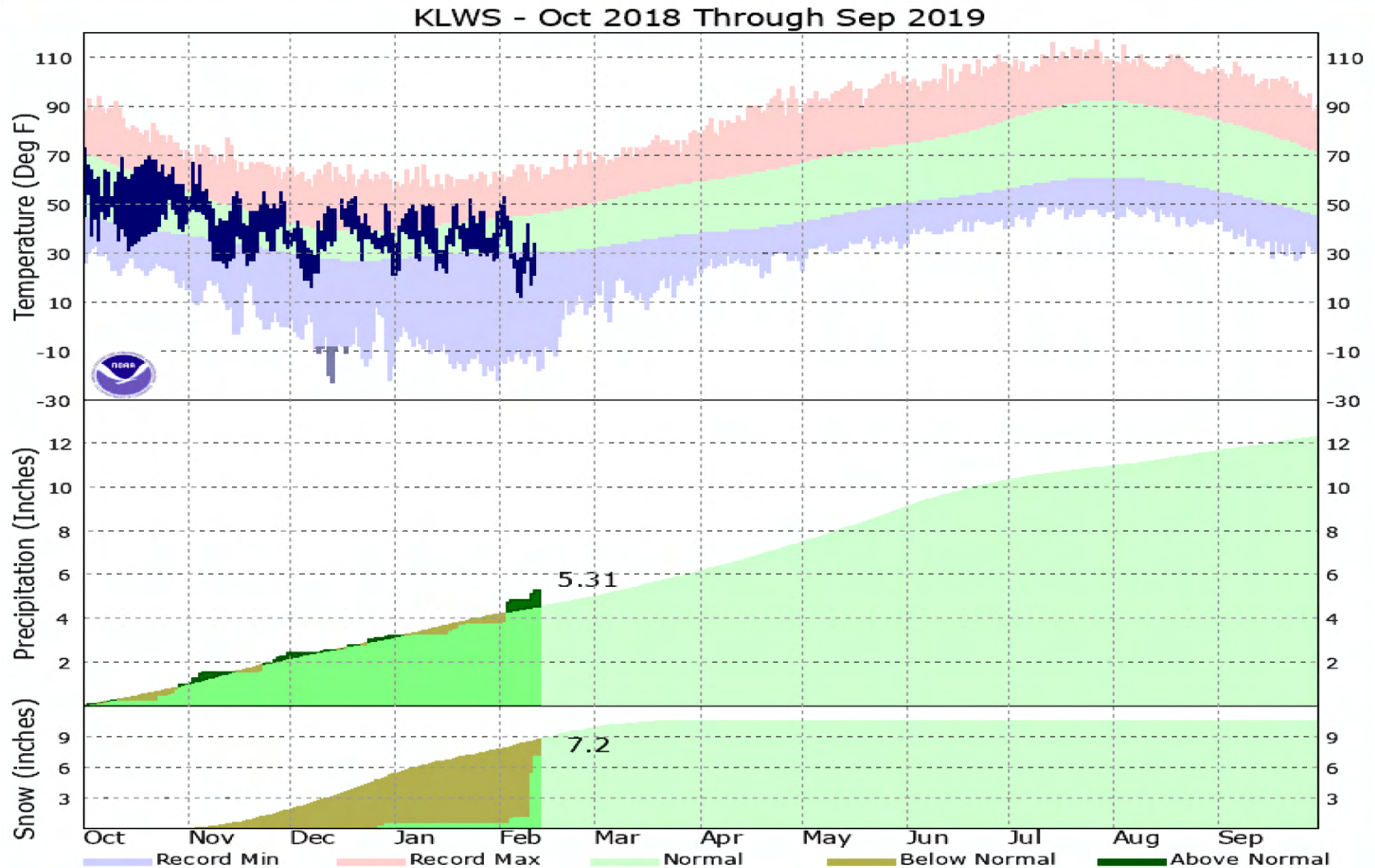


Temperature and Precipitation at McCall

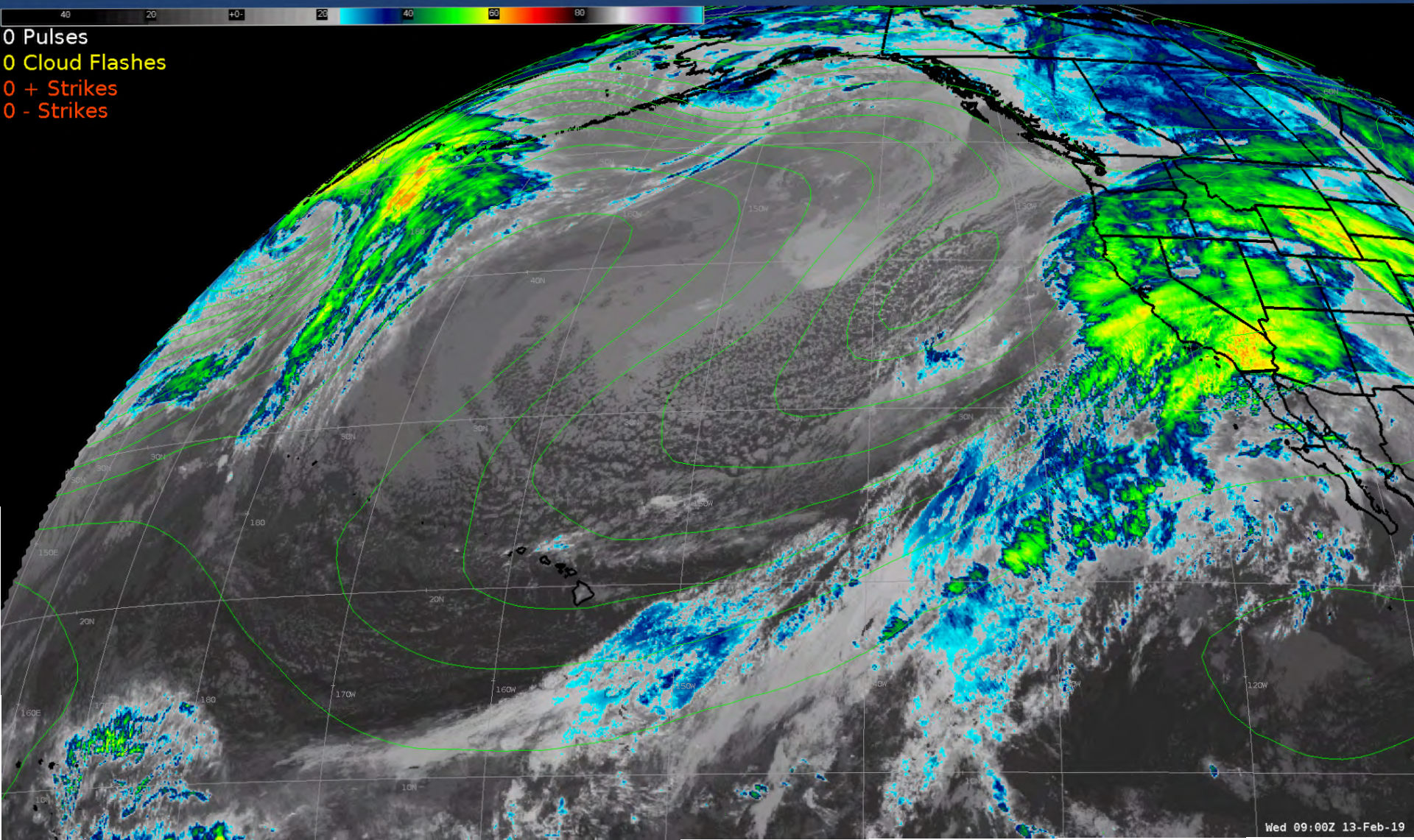
KMYL - Oct 2018 Through Sep 2019



Temperature and Precipitation at Lewiston



Current IR Satellite Imagery

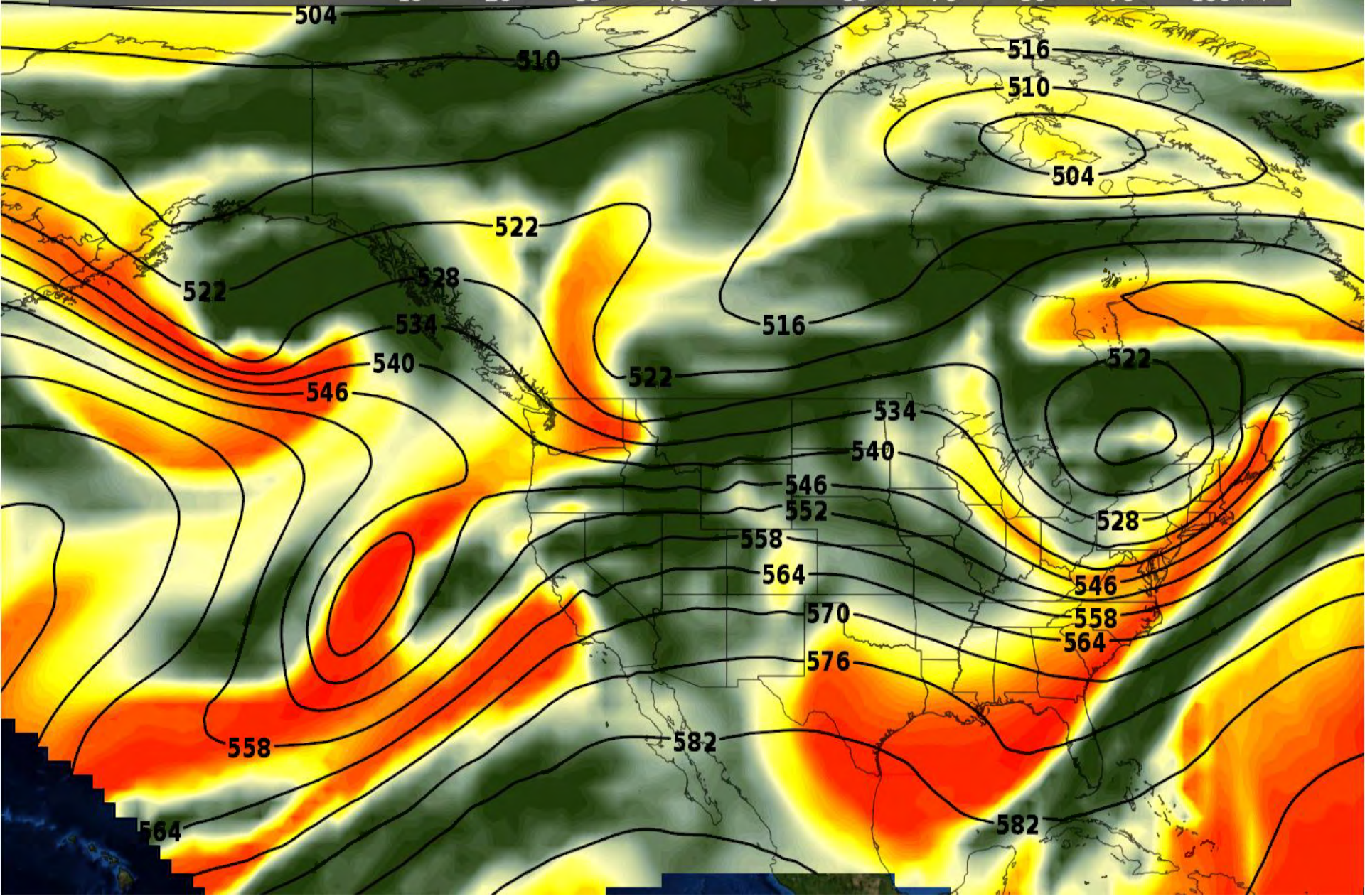


18:00Z Wed, Feb 13, 2019 | GFS 500mb RH and Heights

Init: 06Z13FEB2019

Forecast Hour: 12

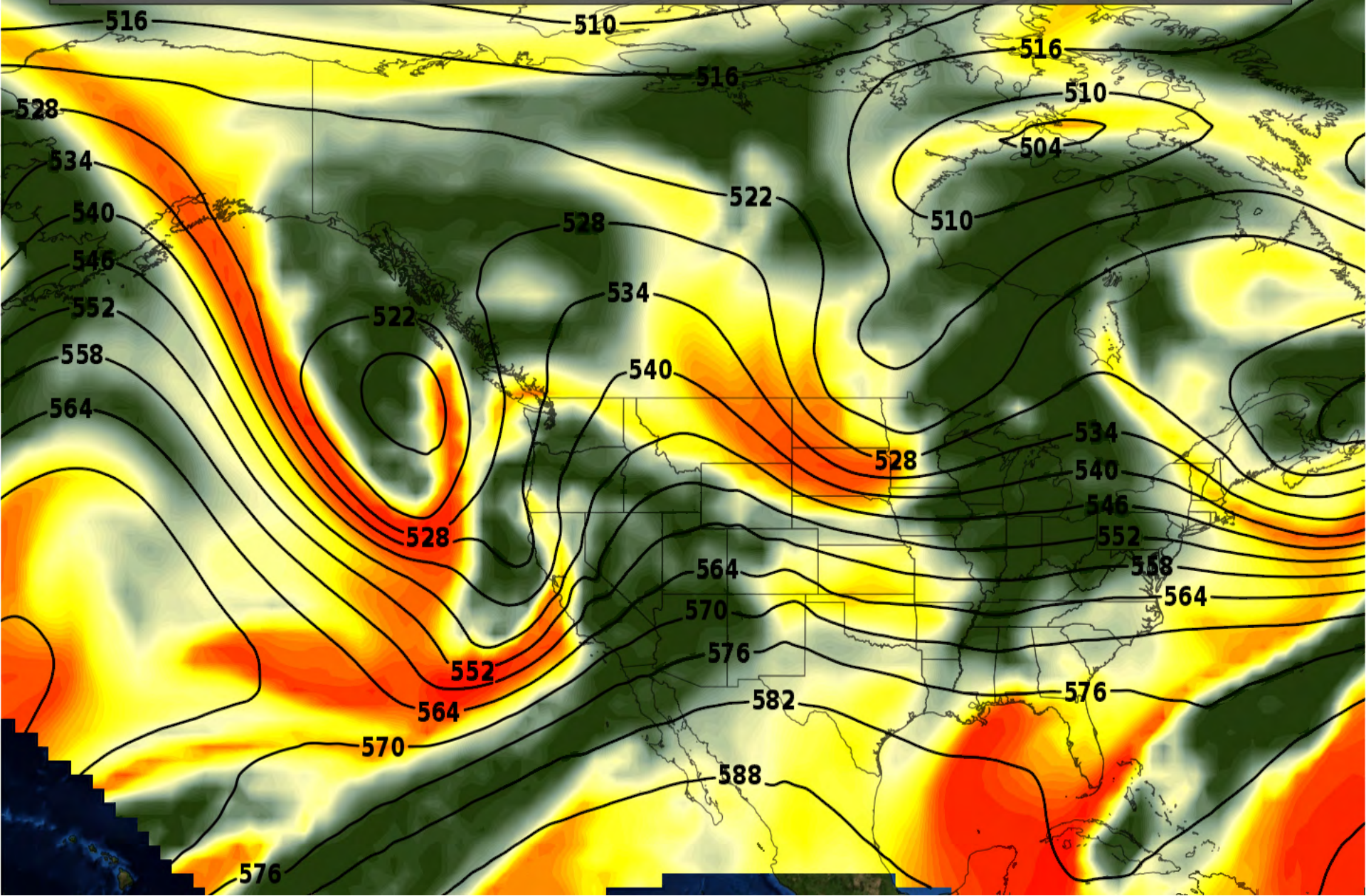
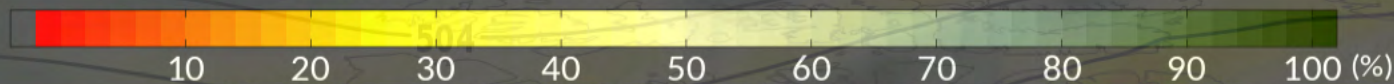
10 20 30 40 50 60 70 80 90 100 (%)



18:00Z Thu, Feb 14, 2019 | GFS 500mb RH and Heights

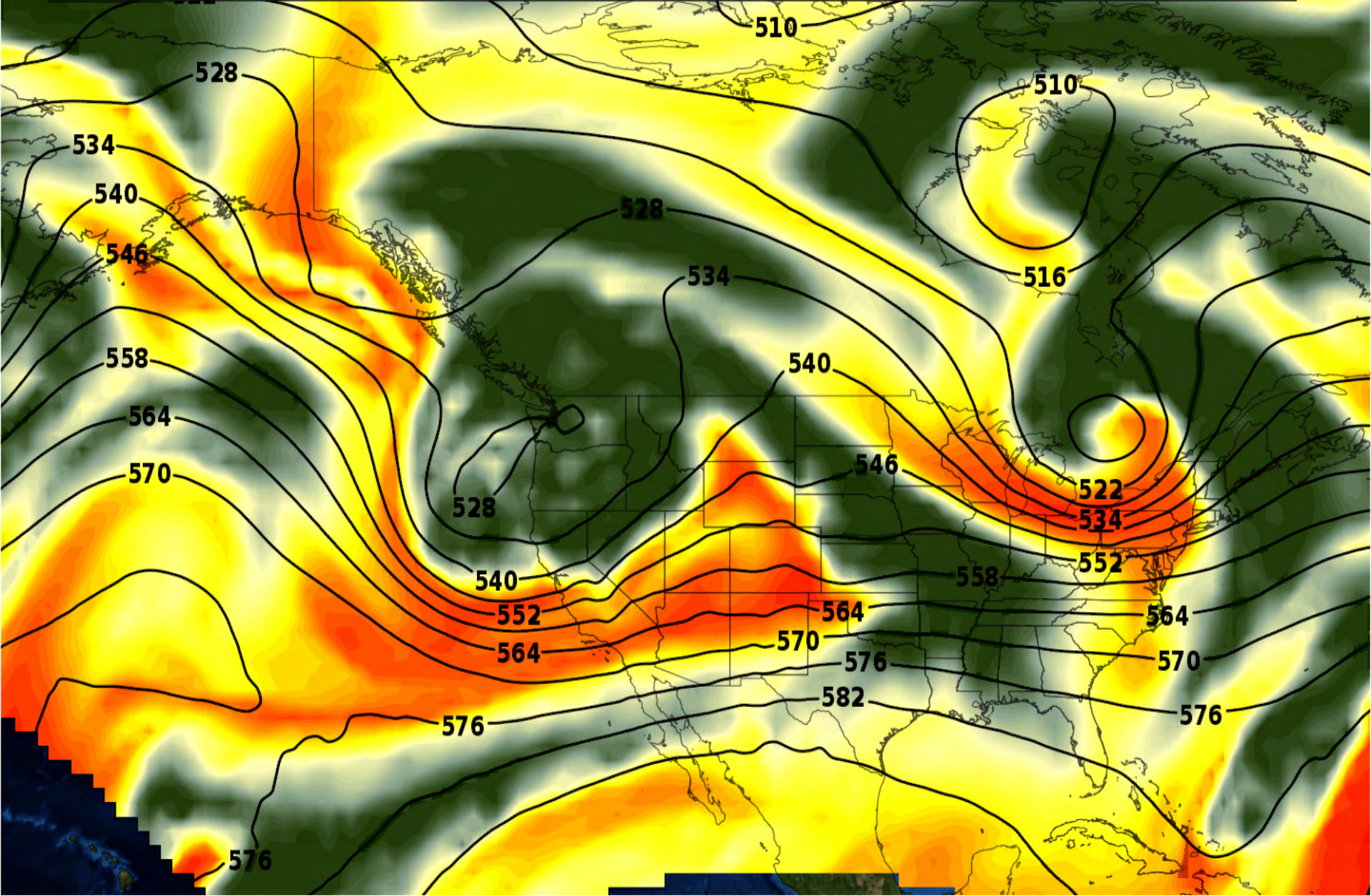
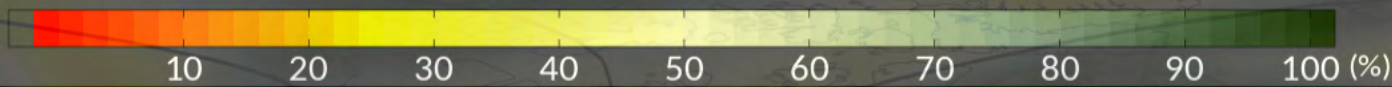
Init: 06Z13FEB2019

Forecast Hour: 36



18:00Z Fri, Feb 15, 2019 | GFS 500mb RH and Heights

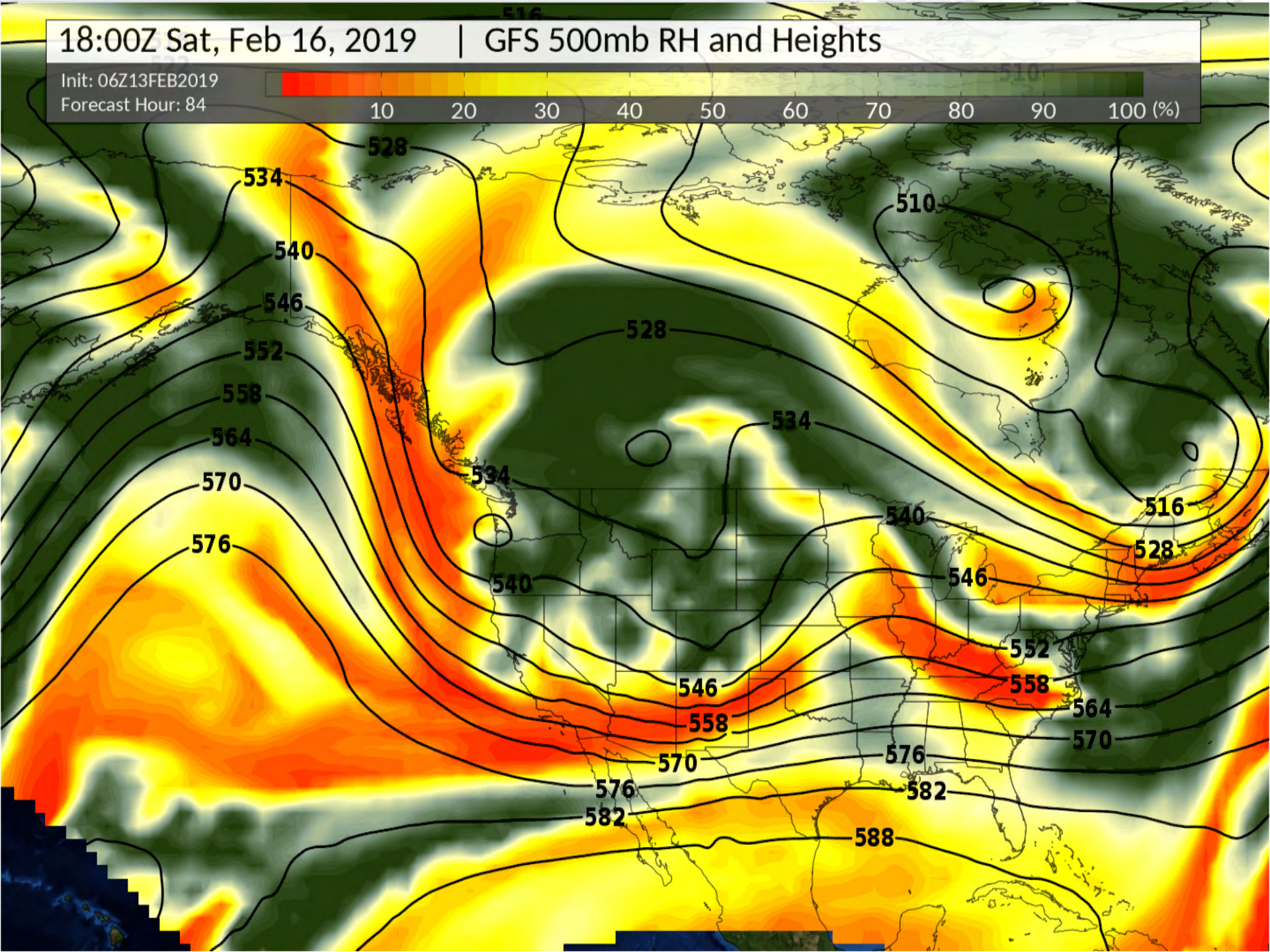
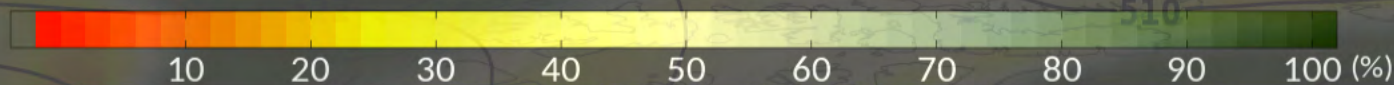
Init: 06Z13FEB2019
Forecast Hour: 60



18:00Z Sat, Feb 16, 2019 | GFS 500mb RH and Heights

Init: 06Z13FEB2019

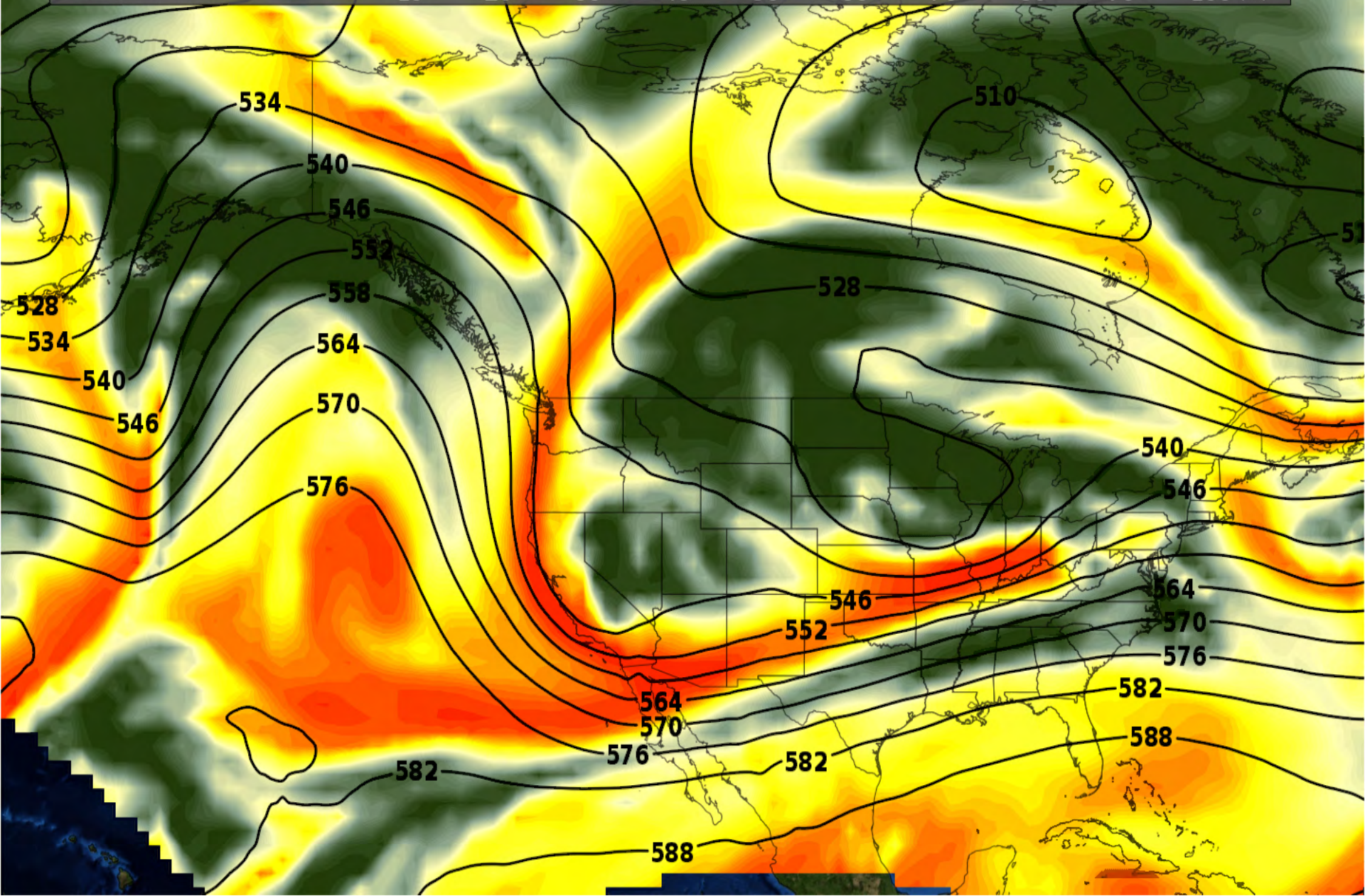
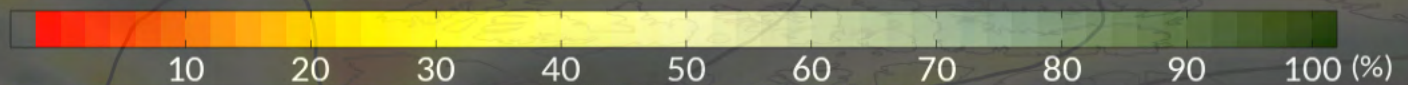
Forecast Hour: 84



18:00Z Sun, Feb 17, 2019 | GFS 500mb RH and Heights

Init: 06Z13FEB2019

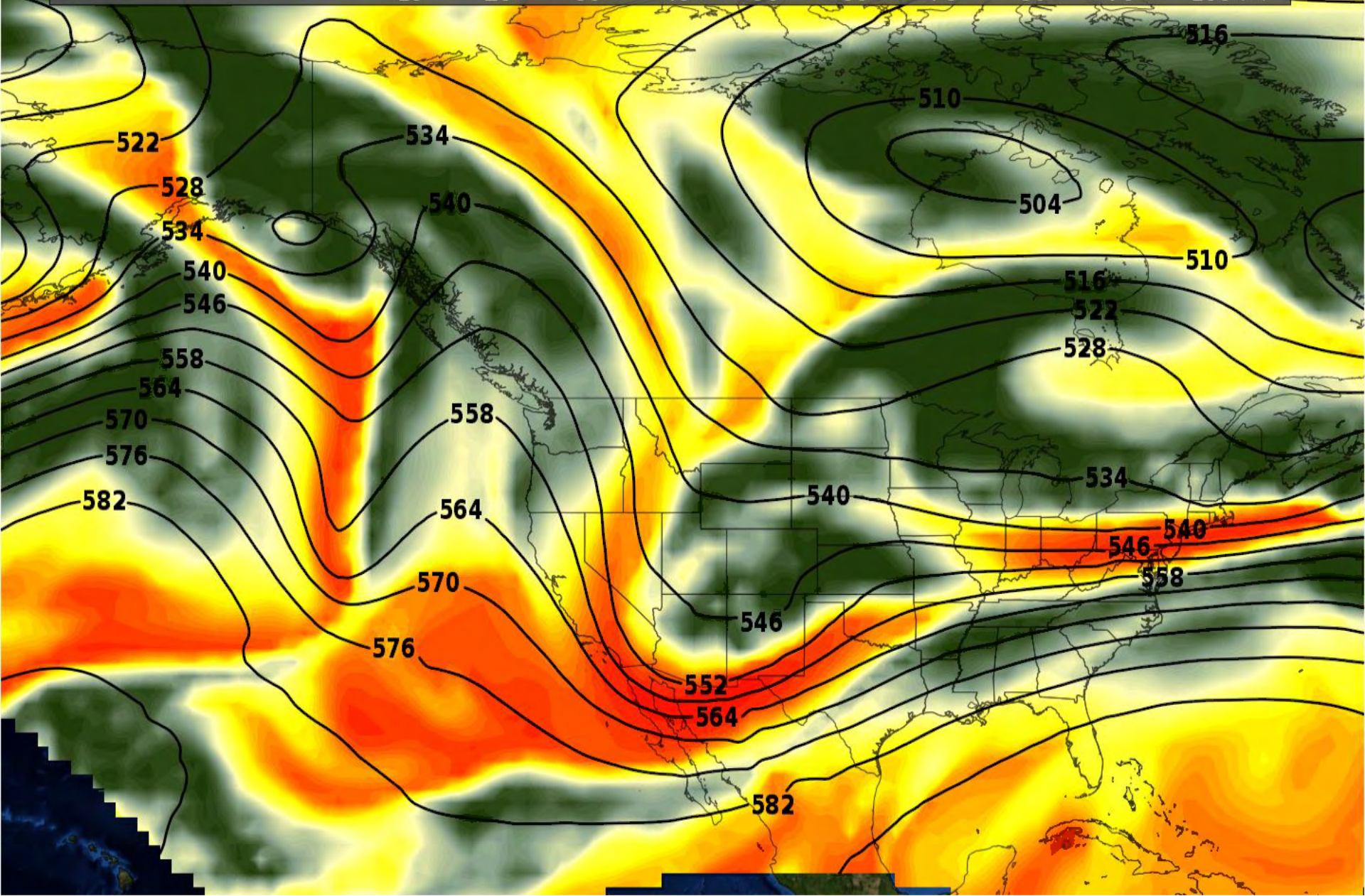
Forecast Hour: 108



18:00Z Mon, Feb 18, 2019 | GFS 500mb RH and Heights

Init: 06Z13FEB2019

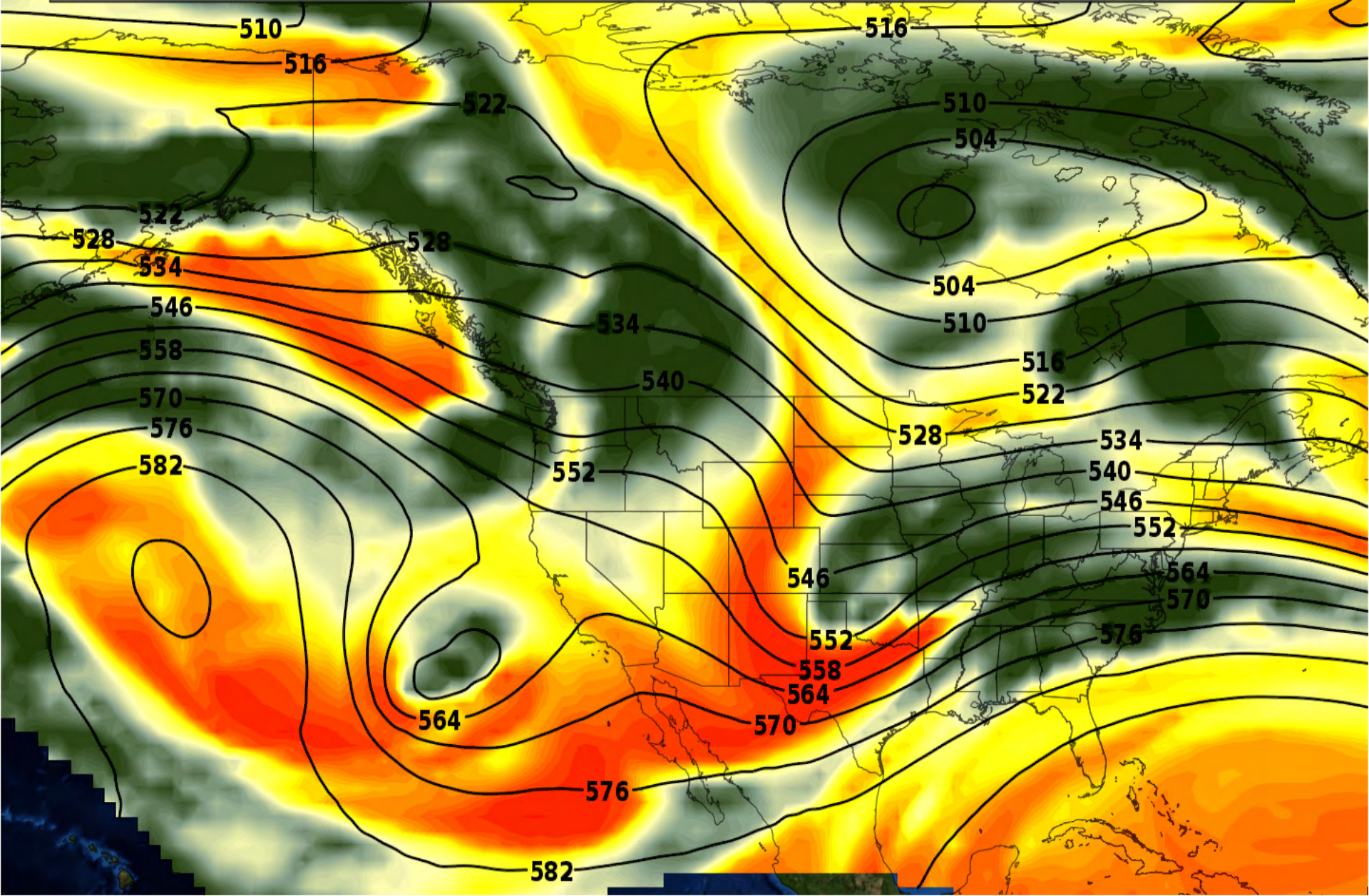
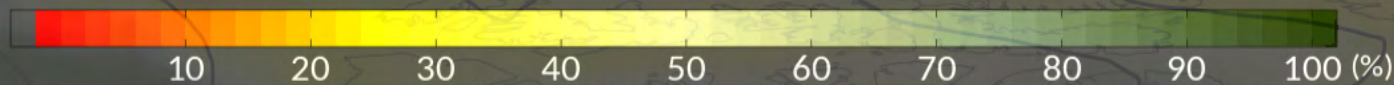
Forecast Hour: 132



18:00Z Tue, Feb 19, 2019 | GFS 500mb RH and Heights

Init: 06Z13FEB2019

Forecast Hour: 156

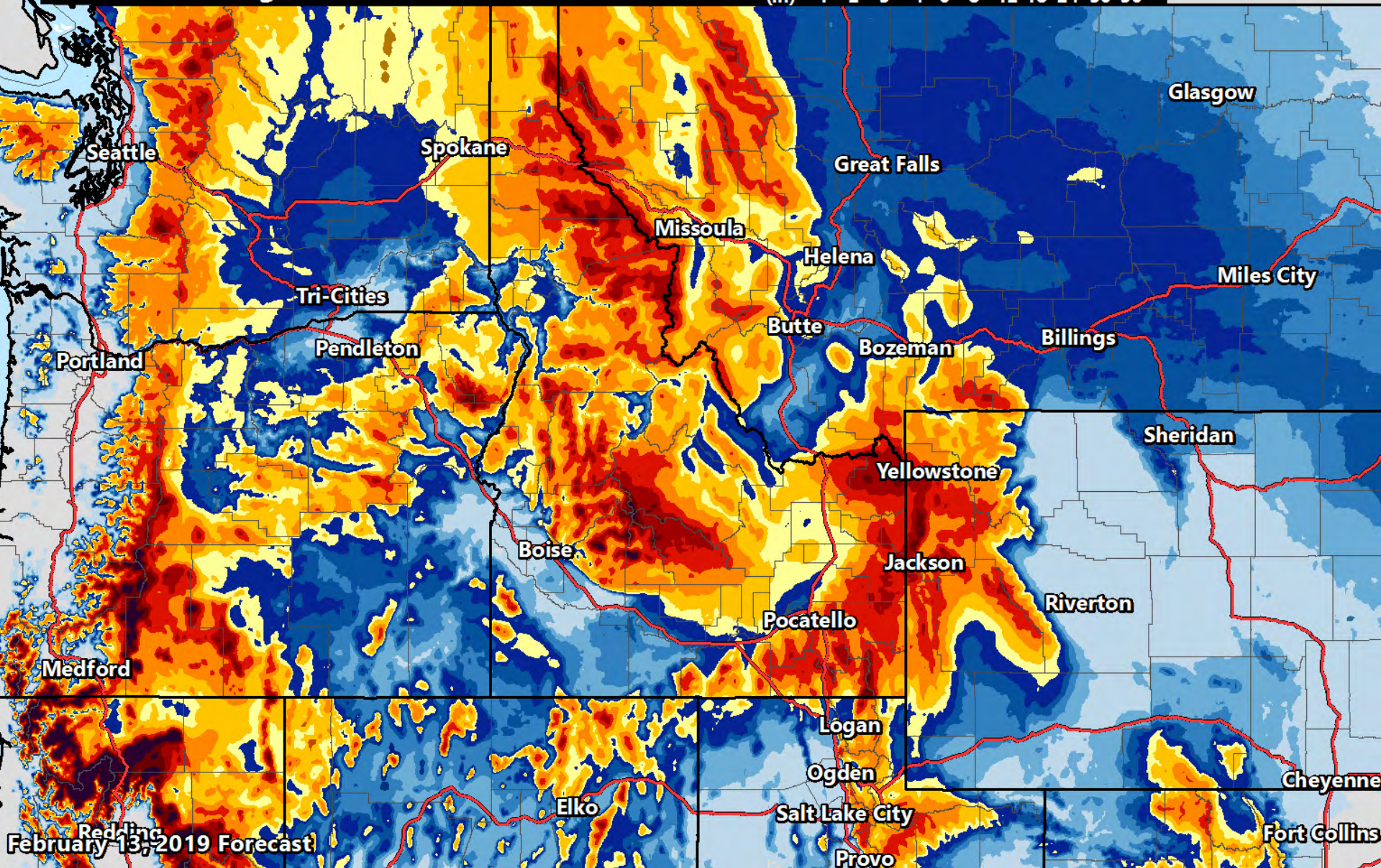




Snow Forecast

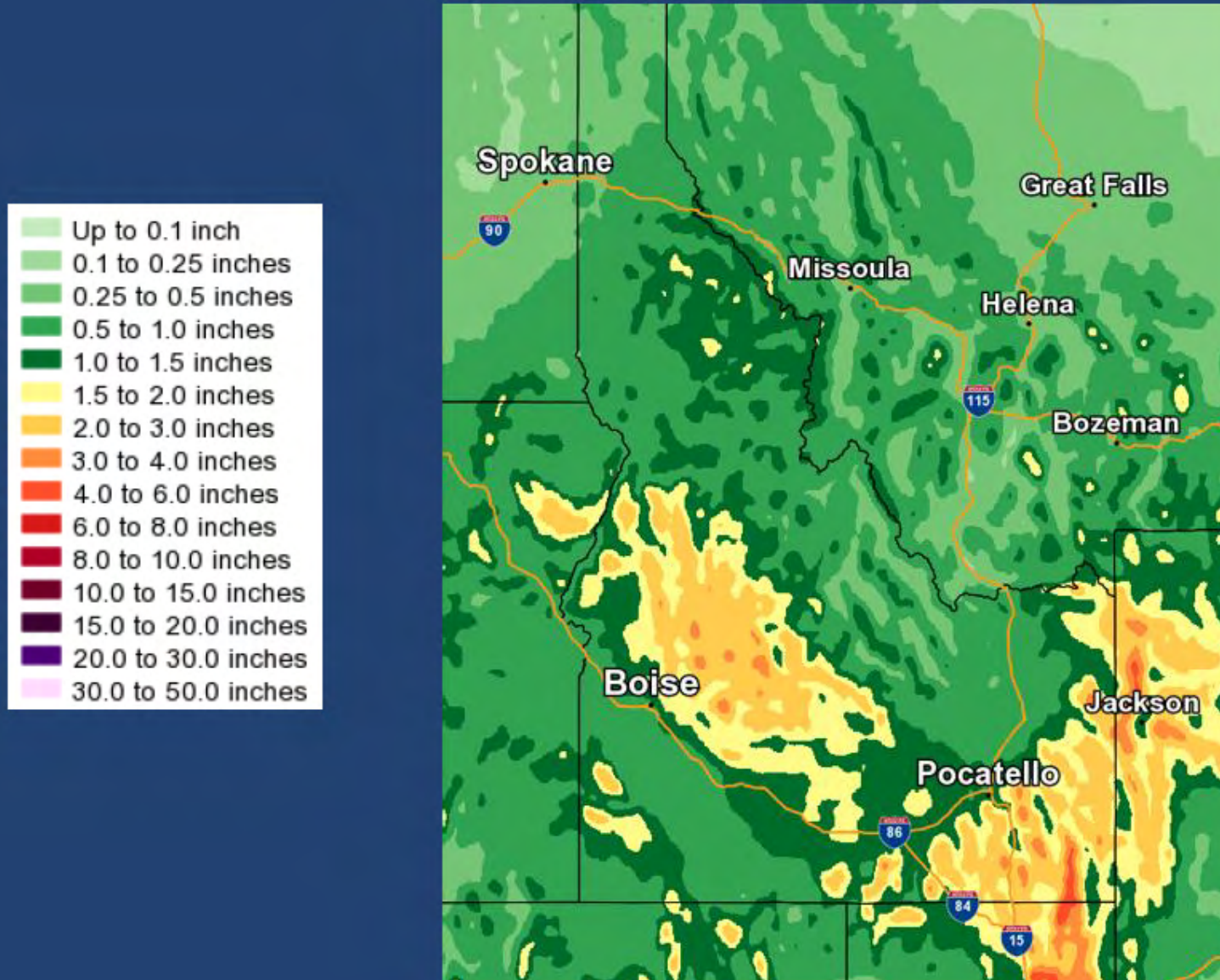
Through 4PM 02/15/19

(in) 1 2 3 4 6 8 12 18 24 30 36



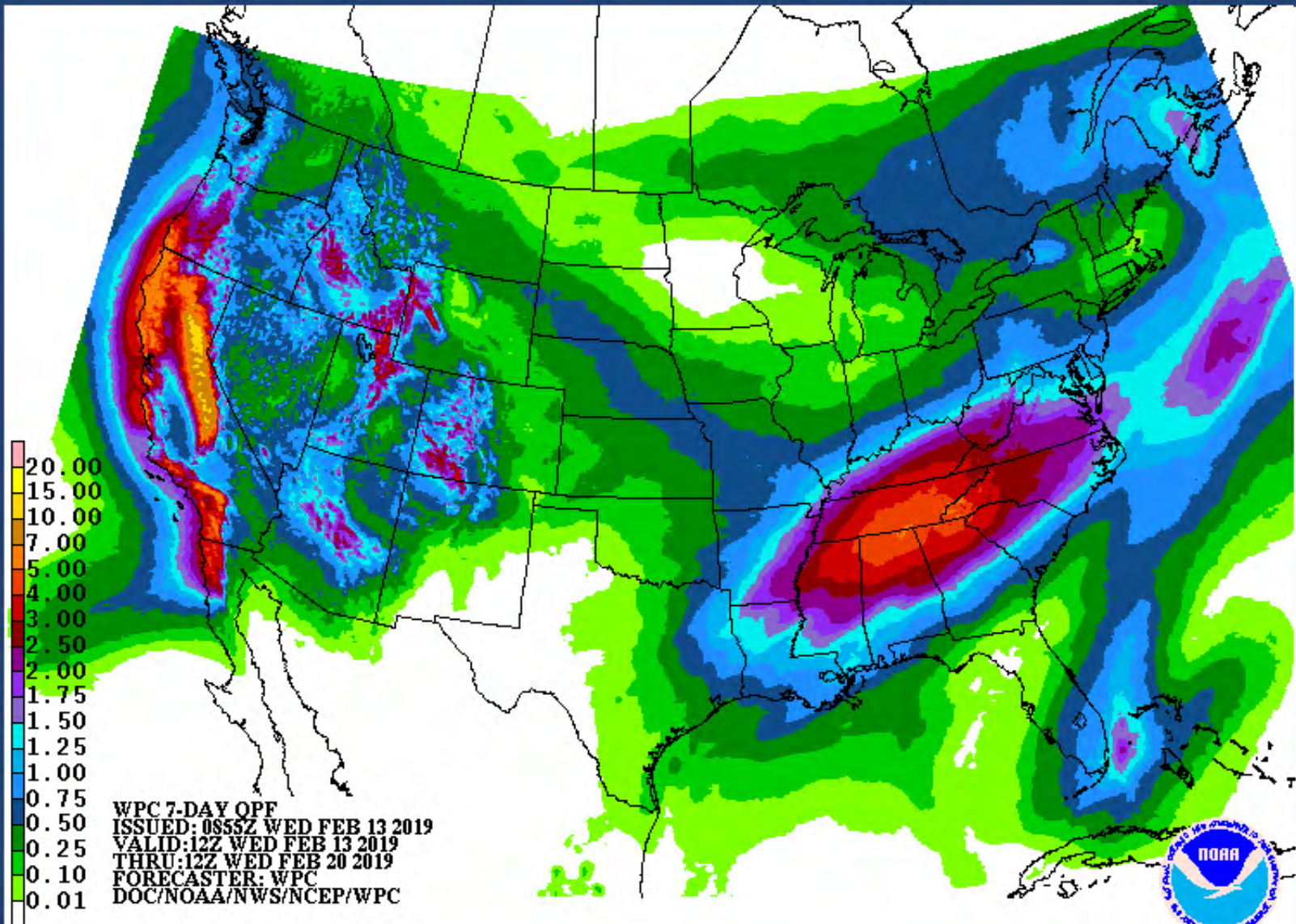
7 – Day Precipitation Forecast

(Through Wednesday, Feb. 20 at 5 AM MST)



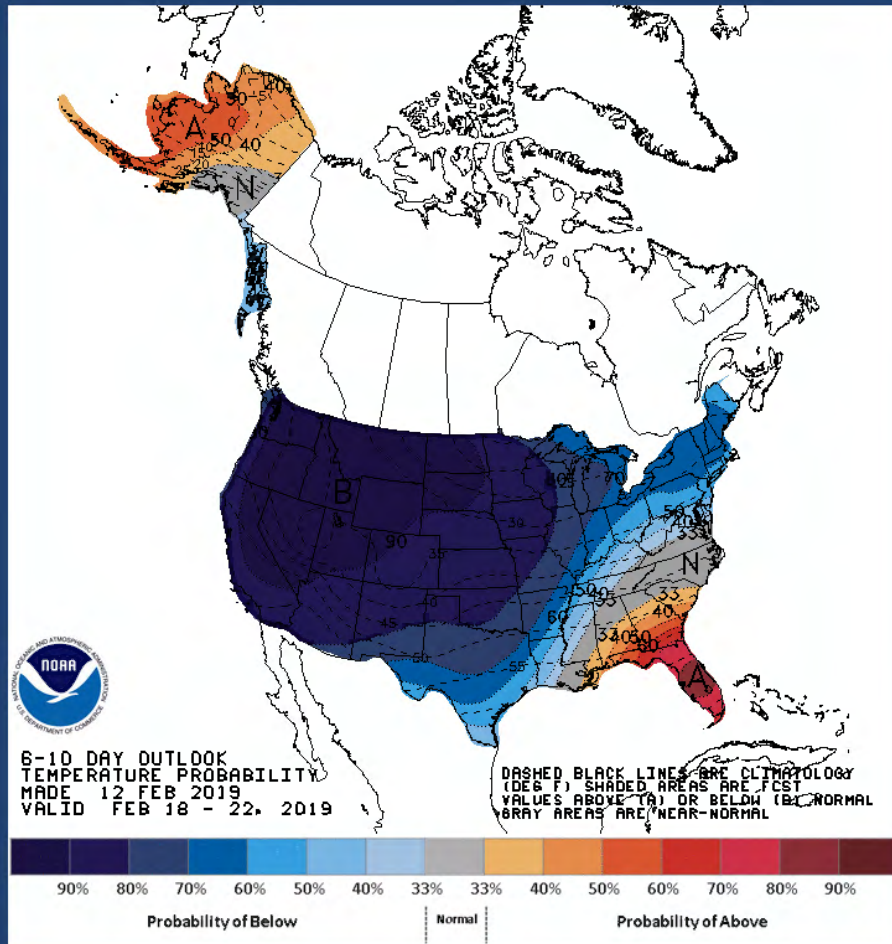
7 – Day Precipitation Forecast

(Through Wednesday, Feb. 20 at 5 AM MST)

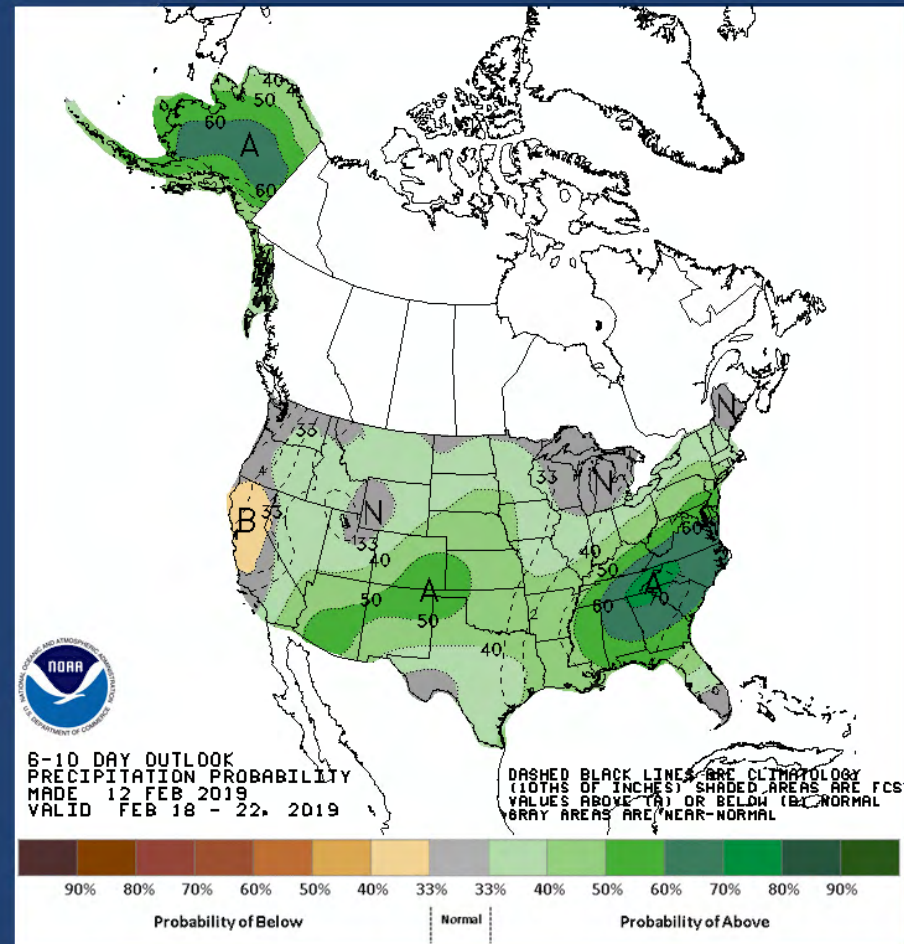


6-10 Day Outlook

February 18 - 22



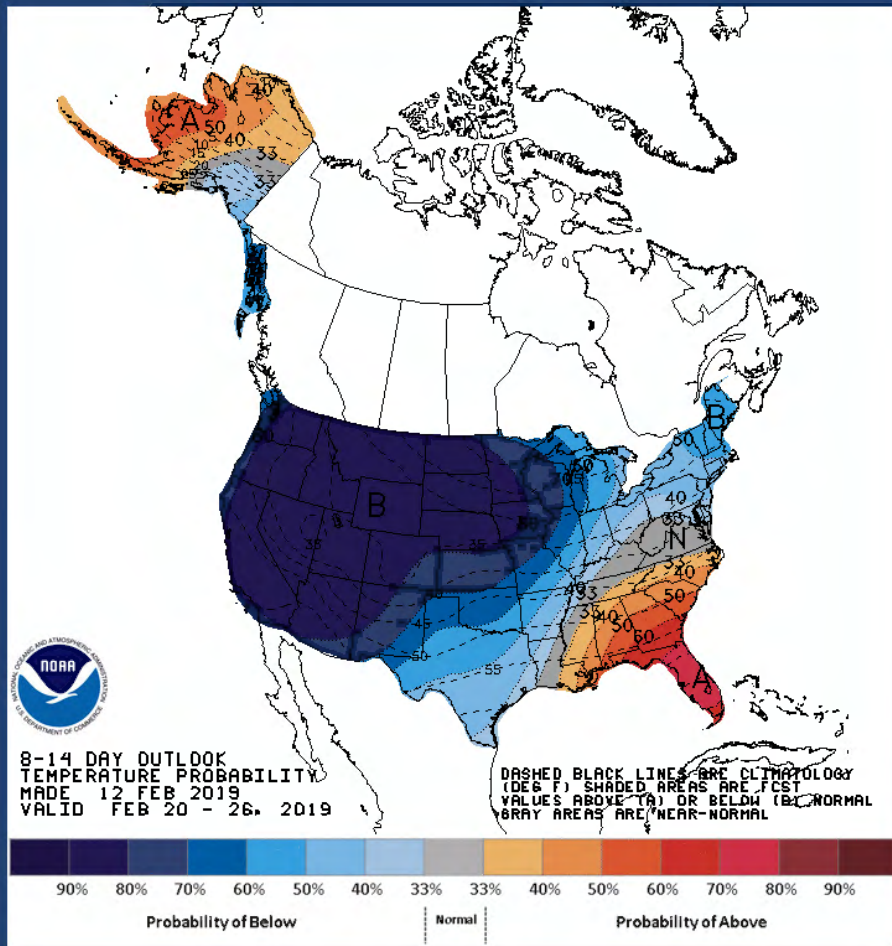
Temperature



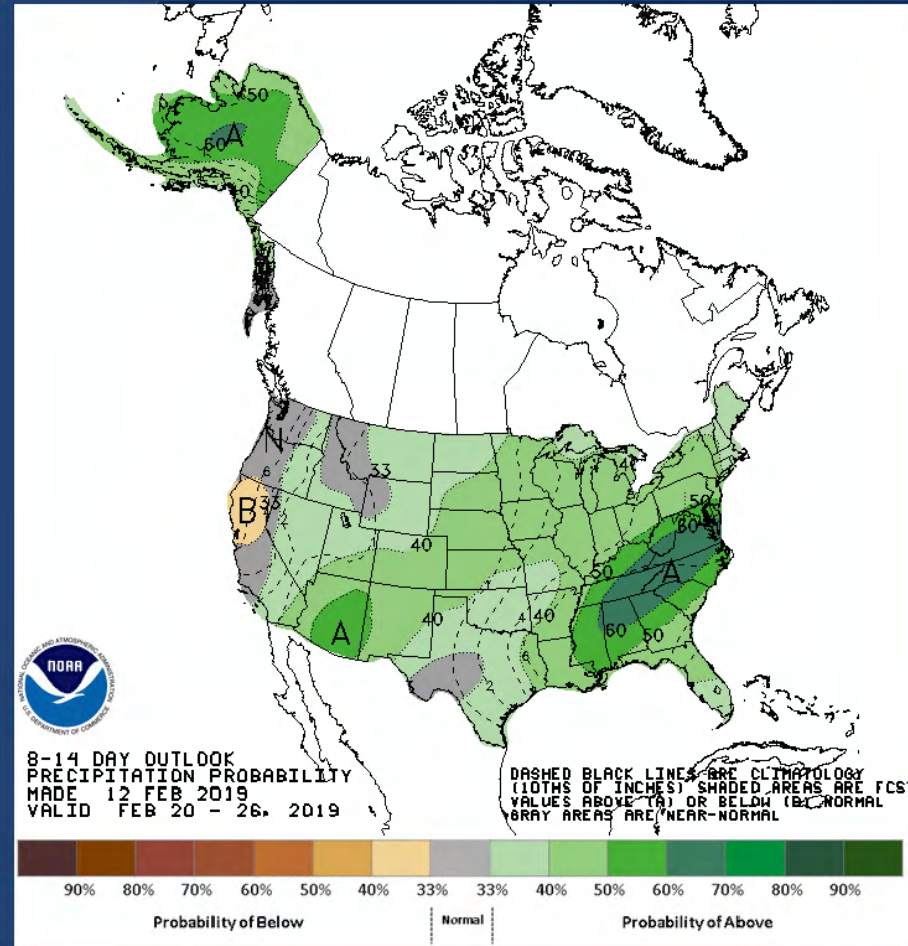
Precipitation

8-14 Day Outlook

February 20 - 26



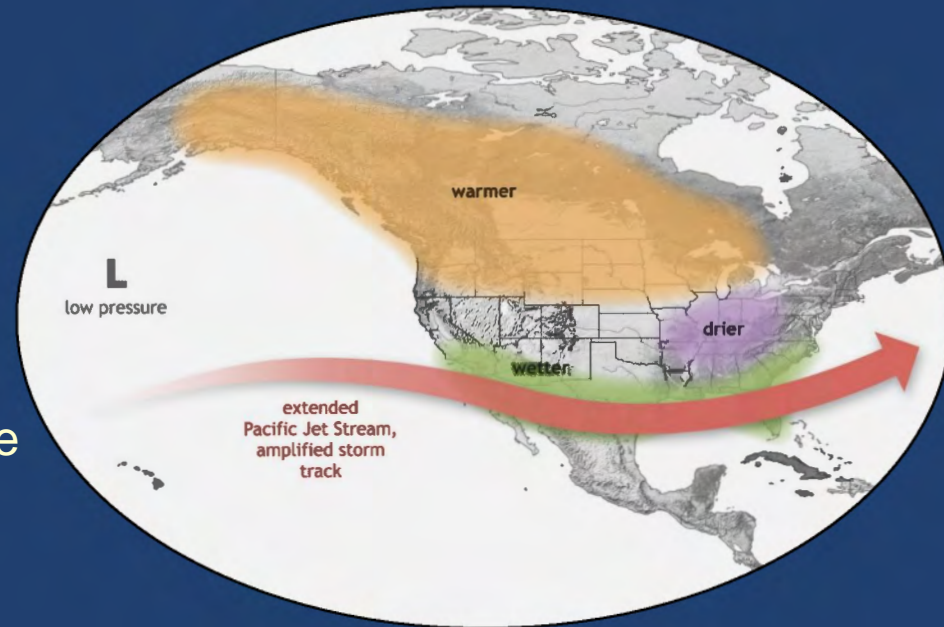
Temperature



Precipitation

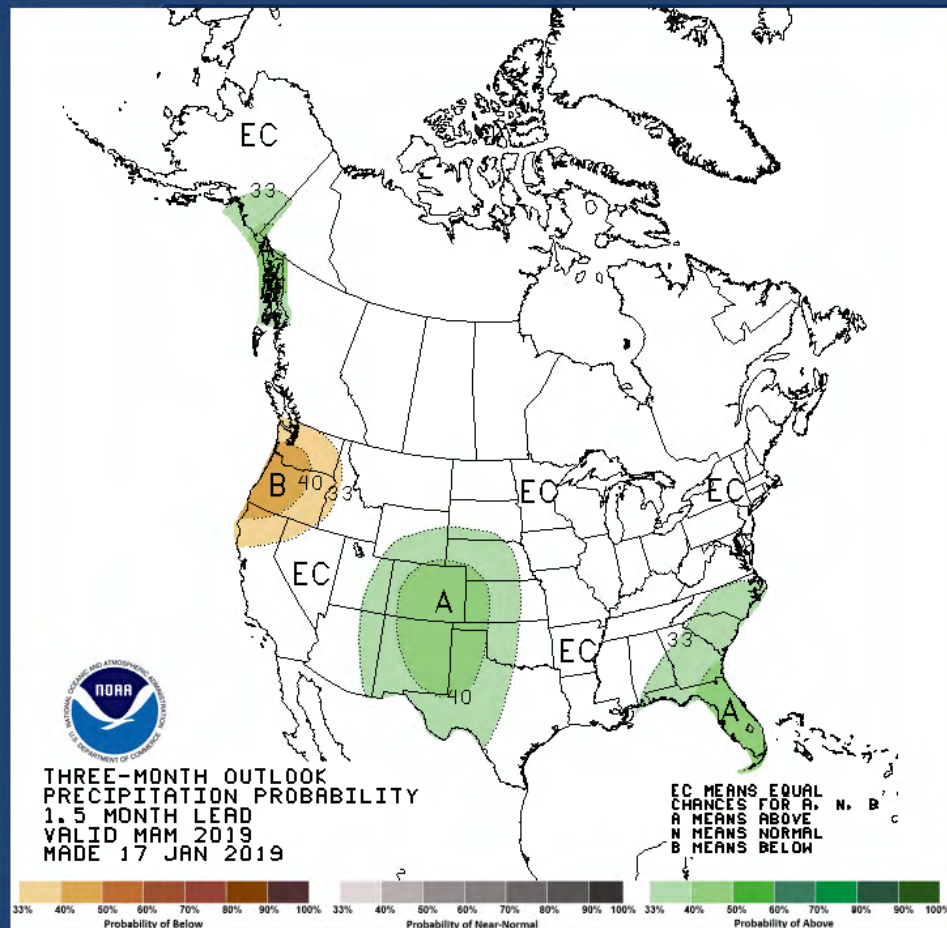
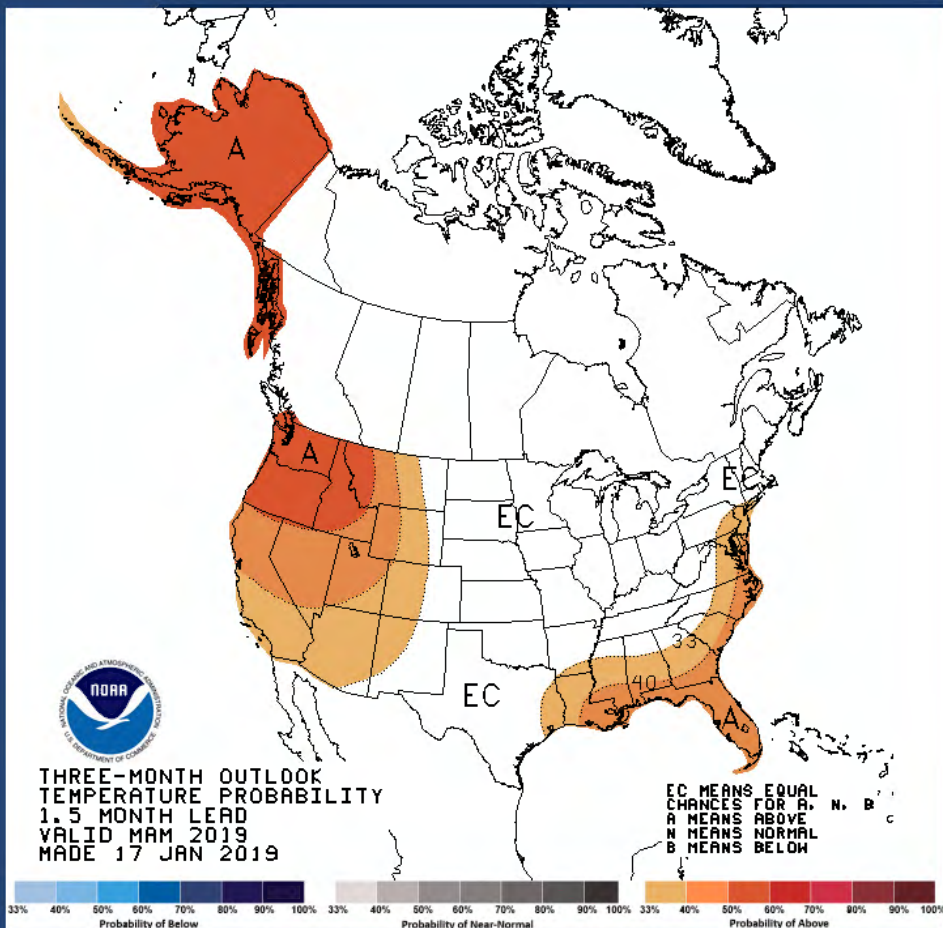
ENSO Status & Climate Outlook

- ENSO-neutral conditions are present
- Sea surface temperatures are above-average across most of the equatorial Pacific Ocean
- The overall coupled ocean-atmosphere system continues to reflect ENSO-neutral
- El Niño (weak) is expected to form and continue through spring (~65% chance)



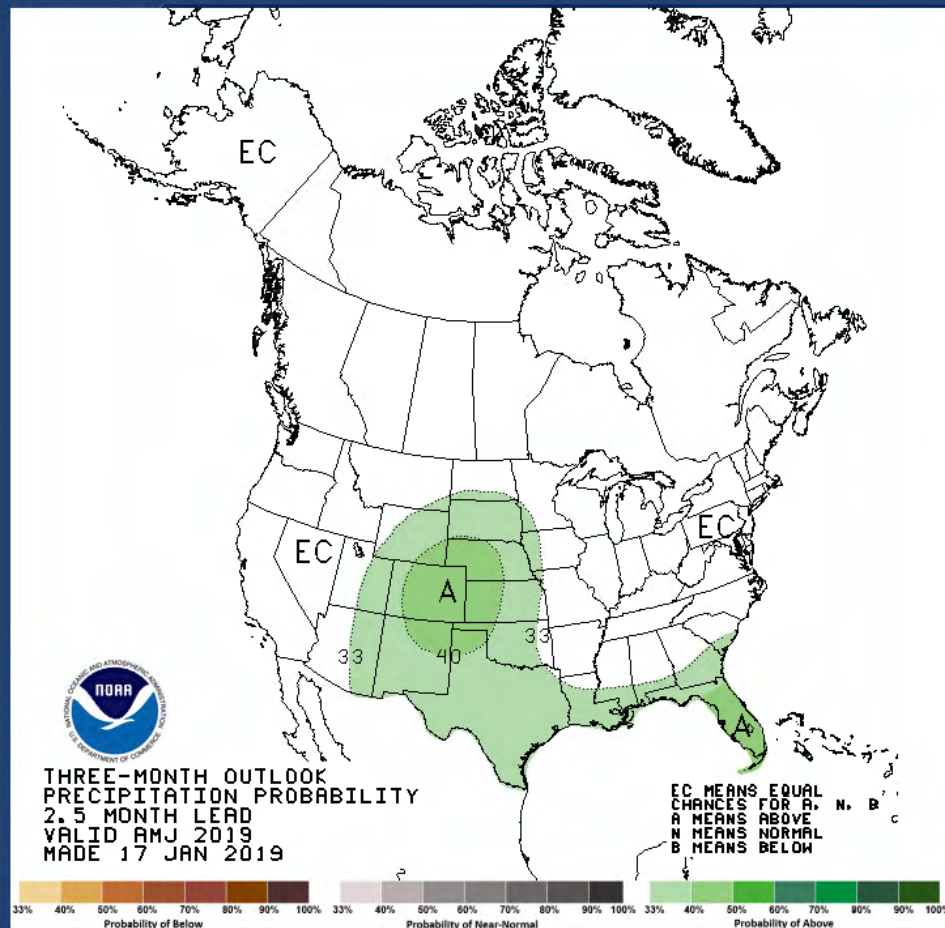
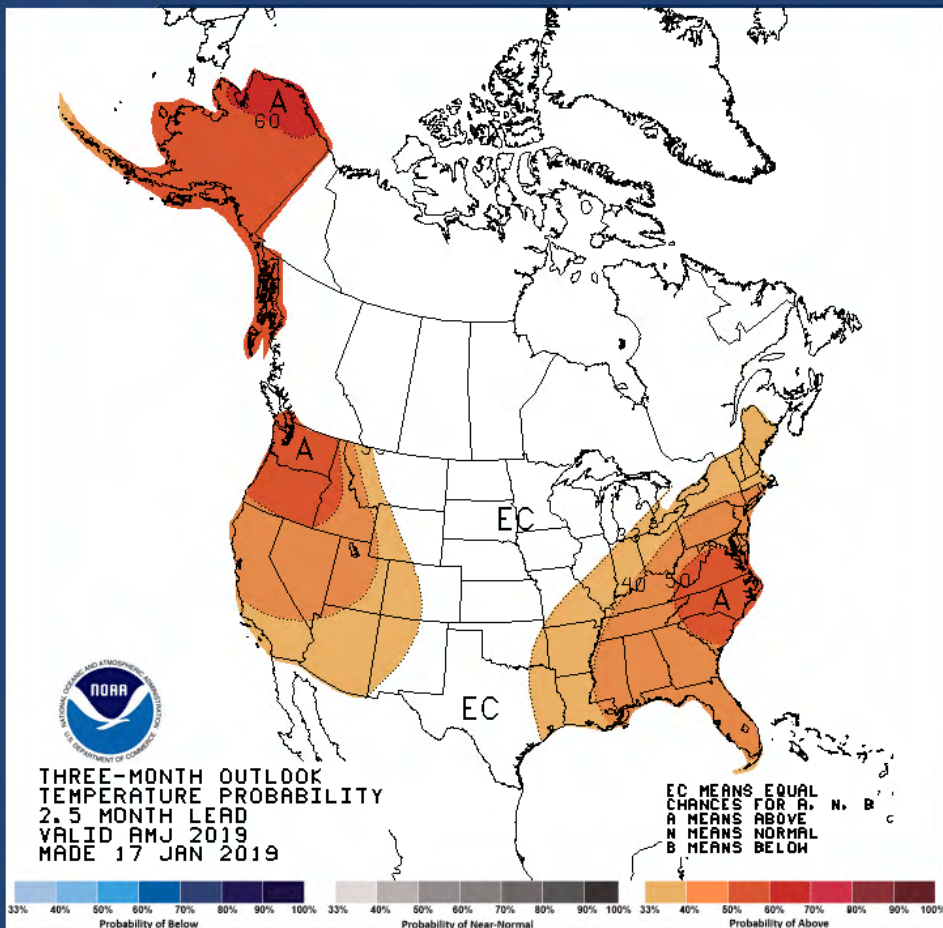
El Niño Winter Impacts

Seasonal Outlook



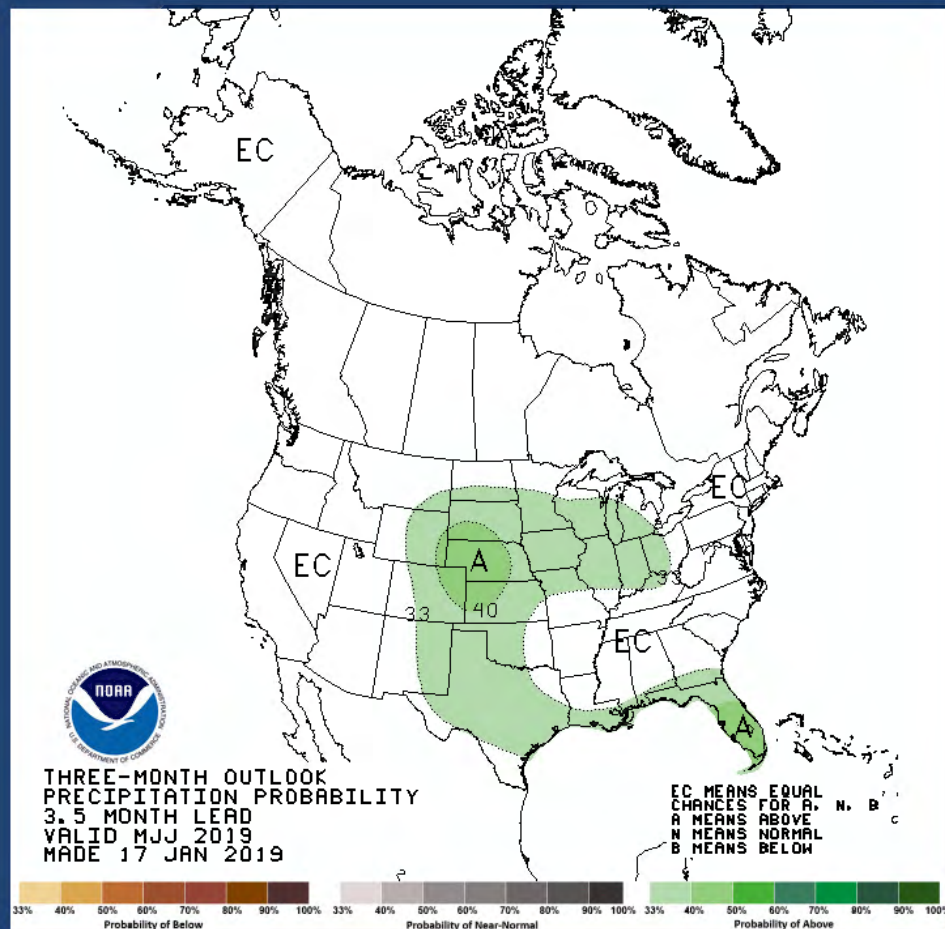
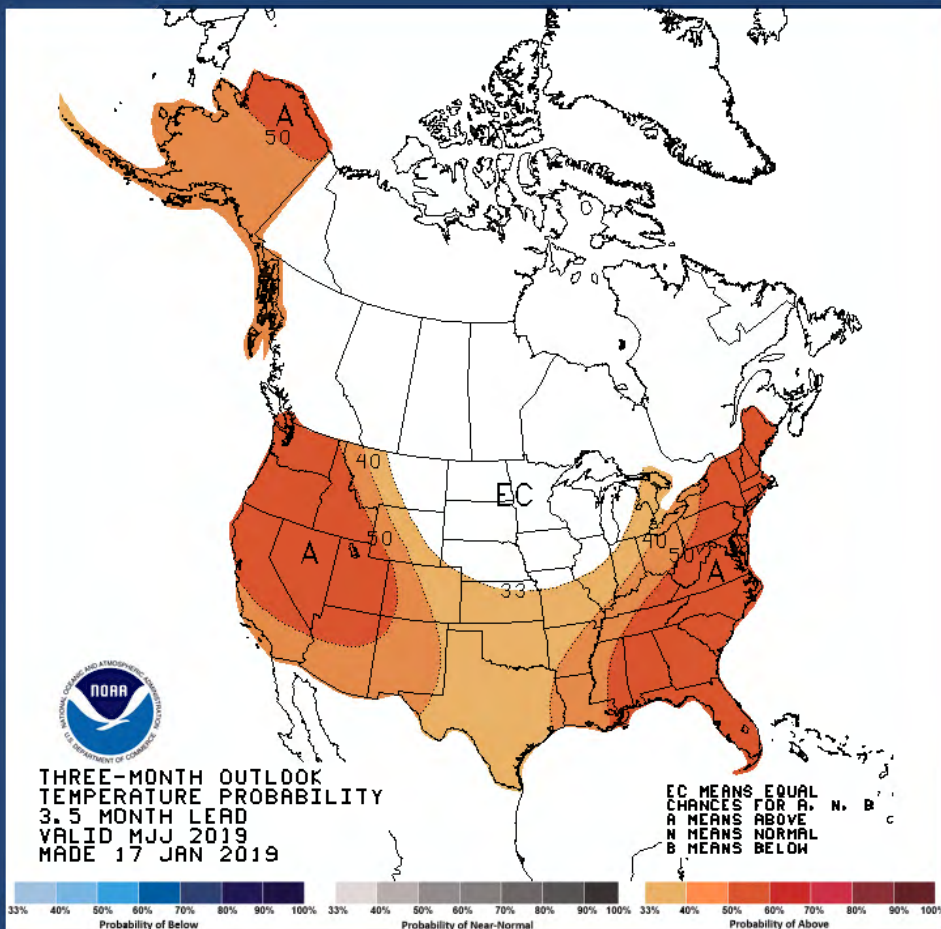
Jan | Feb | **Mar** | Apr | May | Jun | Jul | Aug | Sep | Oct | Nov | Dec

Seasonal Outlook



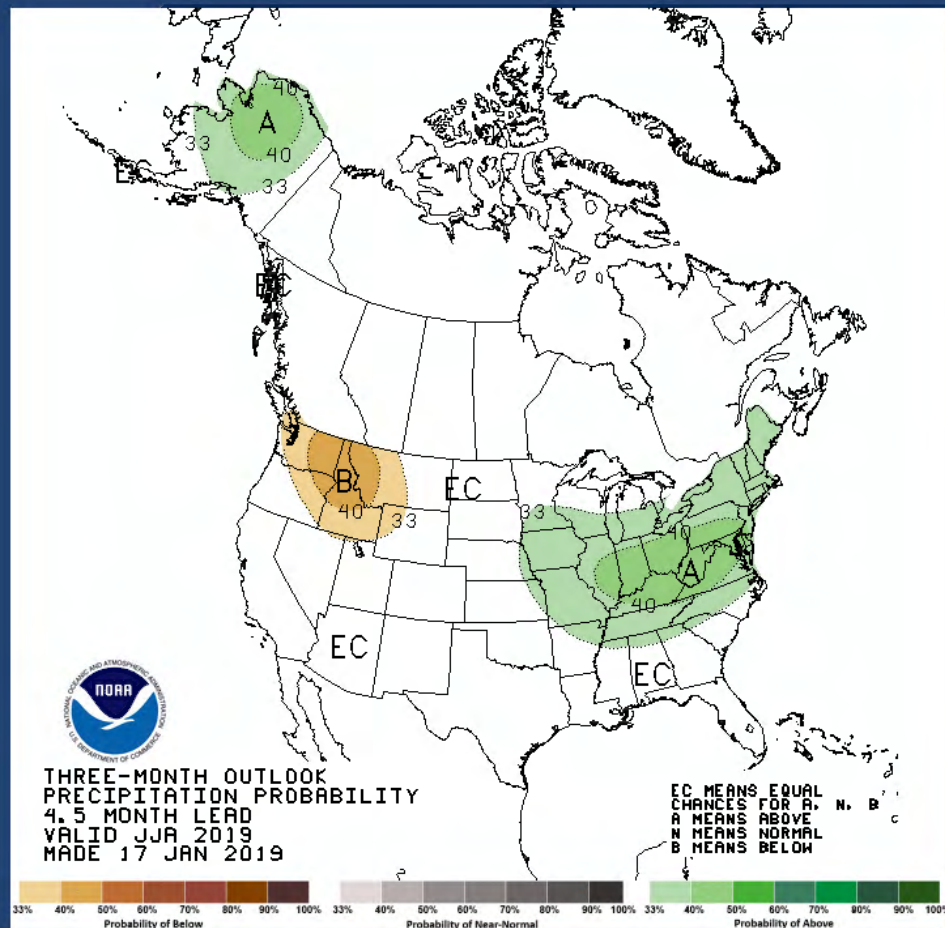
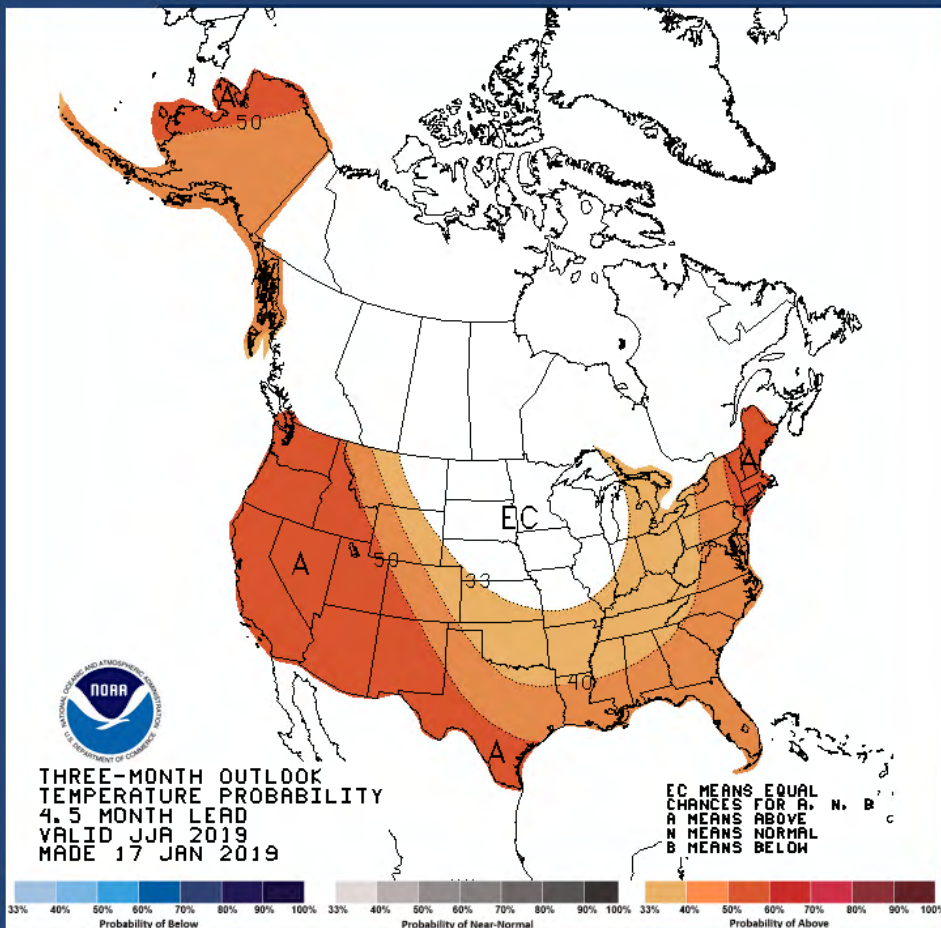
Jan | Feb | Mar | **Apr** | May | Jun | Jul | Aug | Sep | Oct | Nov | Dec

Seasonal Outlook



Jan | Feb | Mar | Apr | **May** | Jun | Jul | Aug | Sep | Oct | Nov | Dec

Seasonal Outlook



Jan | Feb | Mar | Apr | May | Jun | Jul | Aug | Sep | Oct | Nov | Dec



Northwest River Forecast Center Water Supply Forecasts



River and Hydrology

Water Supply

Observations

Weather Forecasts

Climate

NWRFC

[Home](#)

[Zoom Out](#)

--- Quick Zooms ---

ESP Issued: 2019-01-09

Ensemble Date: 2019-01-09

[Permalink](#)

Search

Enter NWS ID:

[GO](#)

Map Overlays

- ☒ NWRFC Boundary
- ☐ NWRFC Basins
- ☐ NWS HSAs
- ☐ Counties

ESP WS Volumes

- ☐ Status
- ☒ Percent of Normal
- ☐ Rank (ASC)
- ☐ Rank (DESC)
- ☐ Exceedance (%)
- ☐ Percentile (%)
- ☐ Runoff Status
- ☐ Runoff % of Normal

Water Supply Forecast

Period: APR-SEP

(% Normal)

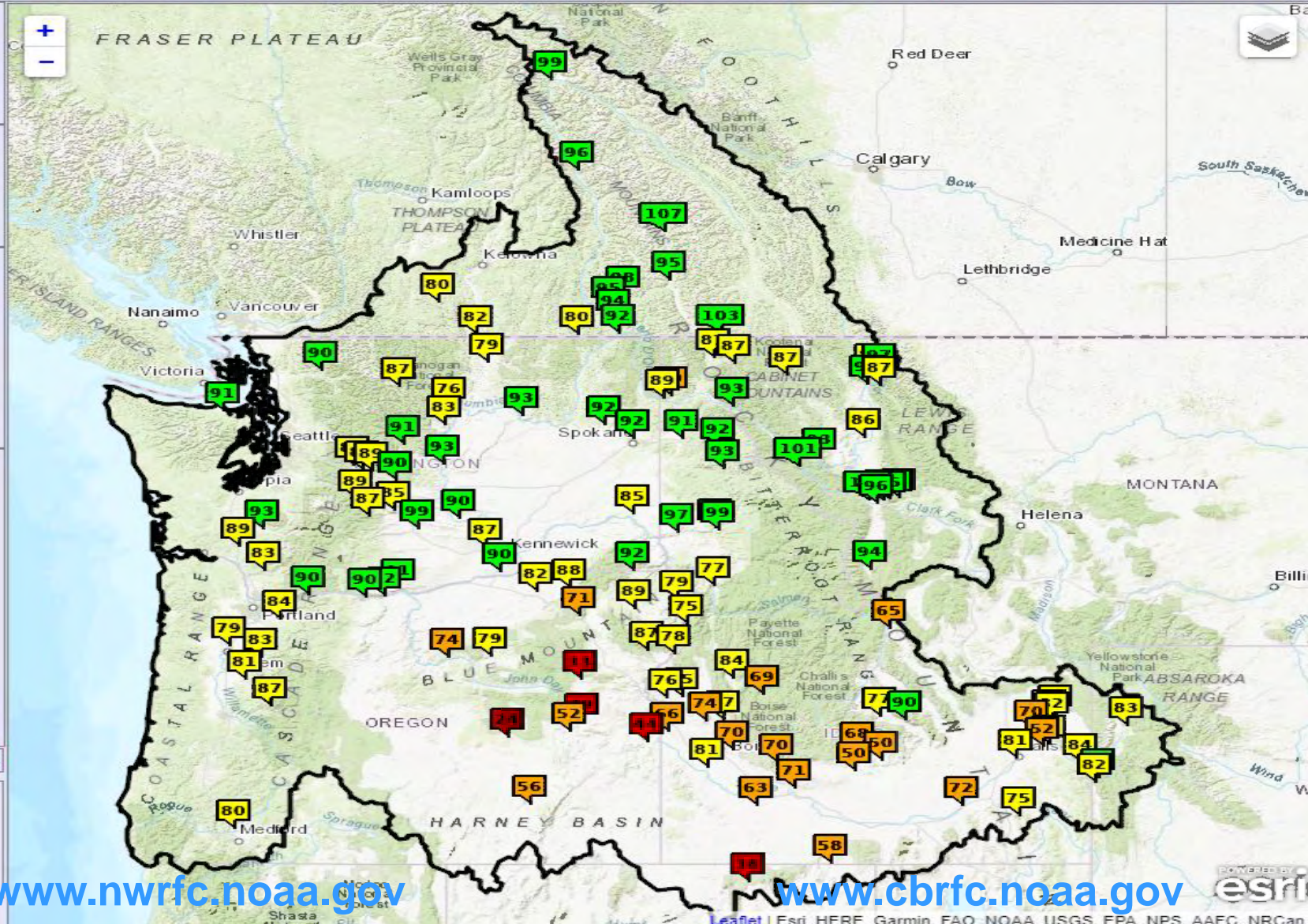
- ☐ No Normal, No data
- ☐ < 25
- ☐ 25-50
- ☐ 50-75
- ☐ 75-90
- ☐ 90-110
- ☐ 110-125
- ☐ 125-150
- ☐ 150-175
- ☐ > 175



Stations Displayed: 124

Water Supply Links

- [Forecast Listing](#)
- [Forecast Report](#)
- [Forecast Report CSV](#)



www.nwrfc.noaa.gov

www.cbrfc.noaa.gov

POWERED BY
esri



Northwest River Forecast Center Water Supply Forecasts



River and Hydrology

Water Supply

Observations

Weather Forecasts

Climate

NWRFC

[Home](#)

[Zoom Out](#)

[Quick Zooms](#)

ESP Issued: 2019-02-12

Ensemble Date: 2019-02-12

[Permalink](#)

Search

Enter NWS ID:

[GO](#)

Map Overlays

- ☒ NWRFC Boundary
- ☐ NWRFC Basins
- ☐ NWS HSAs
- ☐ Counties

ESP WS Volumes

- ☐ Status
- ☐ Percent of Normal
- ☐ Rank (ASC)
- ☐ Rank (DESC)
- ☐ Exceedance (%)
- ☐ Percentile (%)
- ☐ Runoff Status
- ☐ Runoff % of Normal

Water Supply Forecast

Period: APR-SEP
(% Normal)

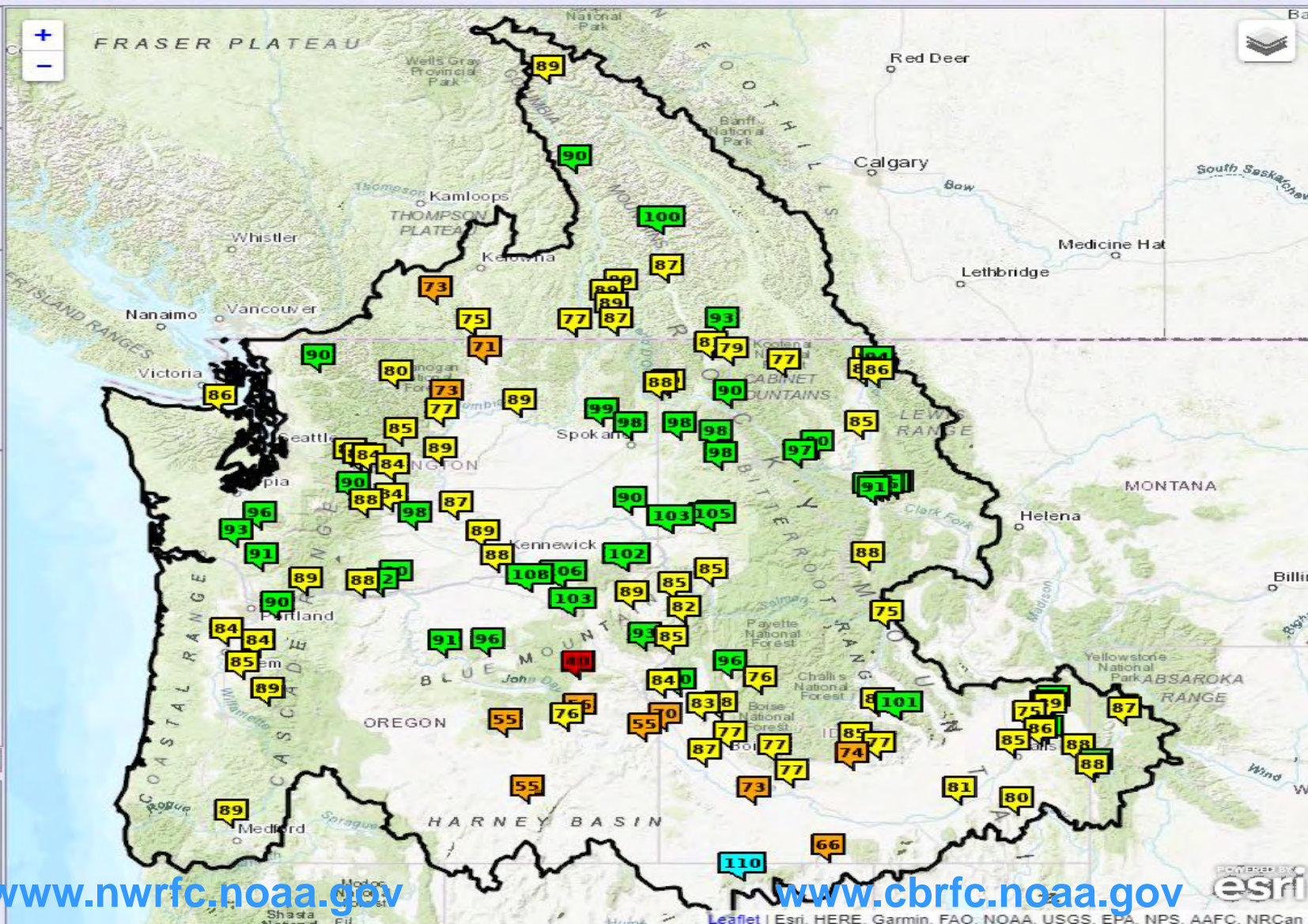
- ☐ No Normal, No data
- ☐ < 25
- ☐ 25-50
- ☐ 50-75
- ☐ 75-90
- ☐ 90-110
- ☐ 110-125
- ☐ 125-150
- ☐ 150-175
- ☐ > 175



Stations Displayed: 124

Water Supply Links

- [Forecast Listing](#)
- [Forecast Report](#)
- [Forecast Report CSV](#)



www.nwrfc.noaa.gov

www.cbrfc.noaa.gov

esri