

2017 Idaho Snowpack and Water Supply Outlook

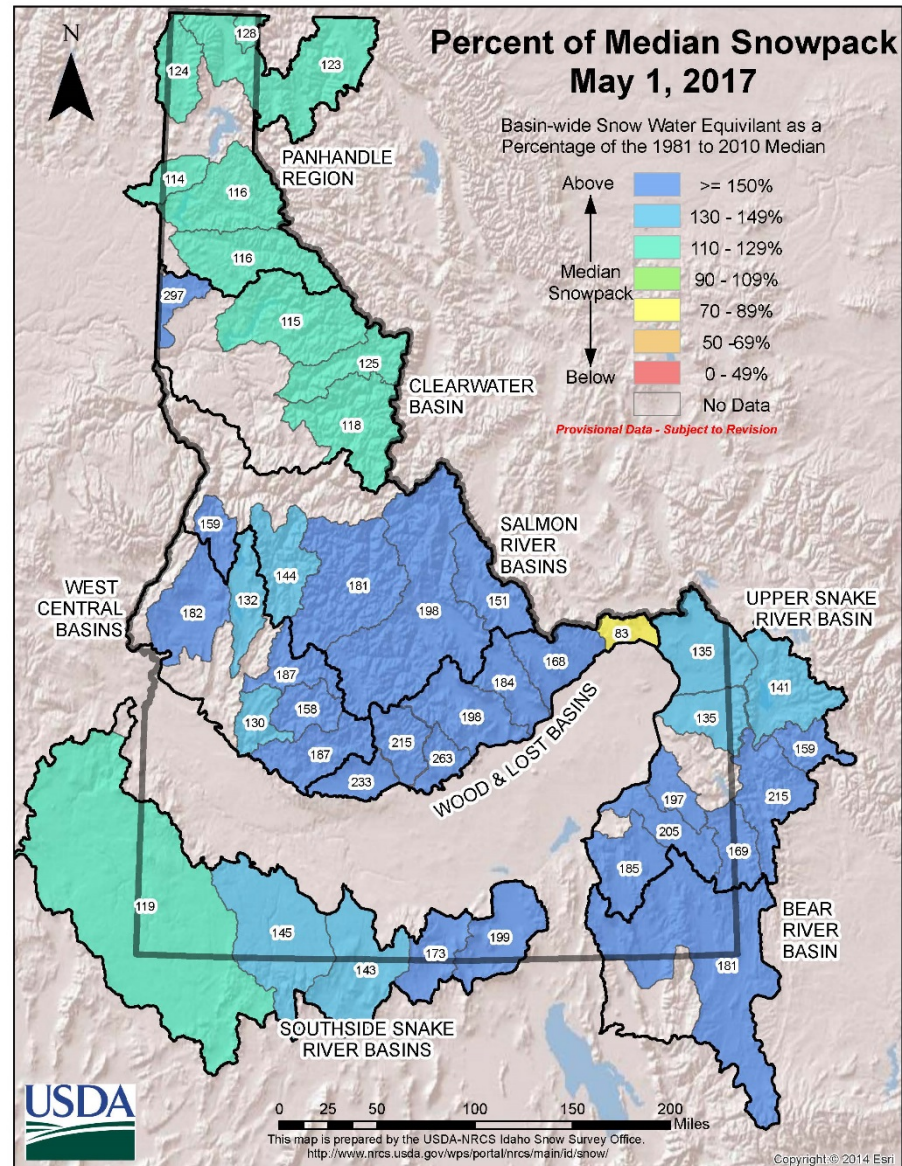
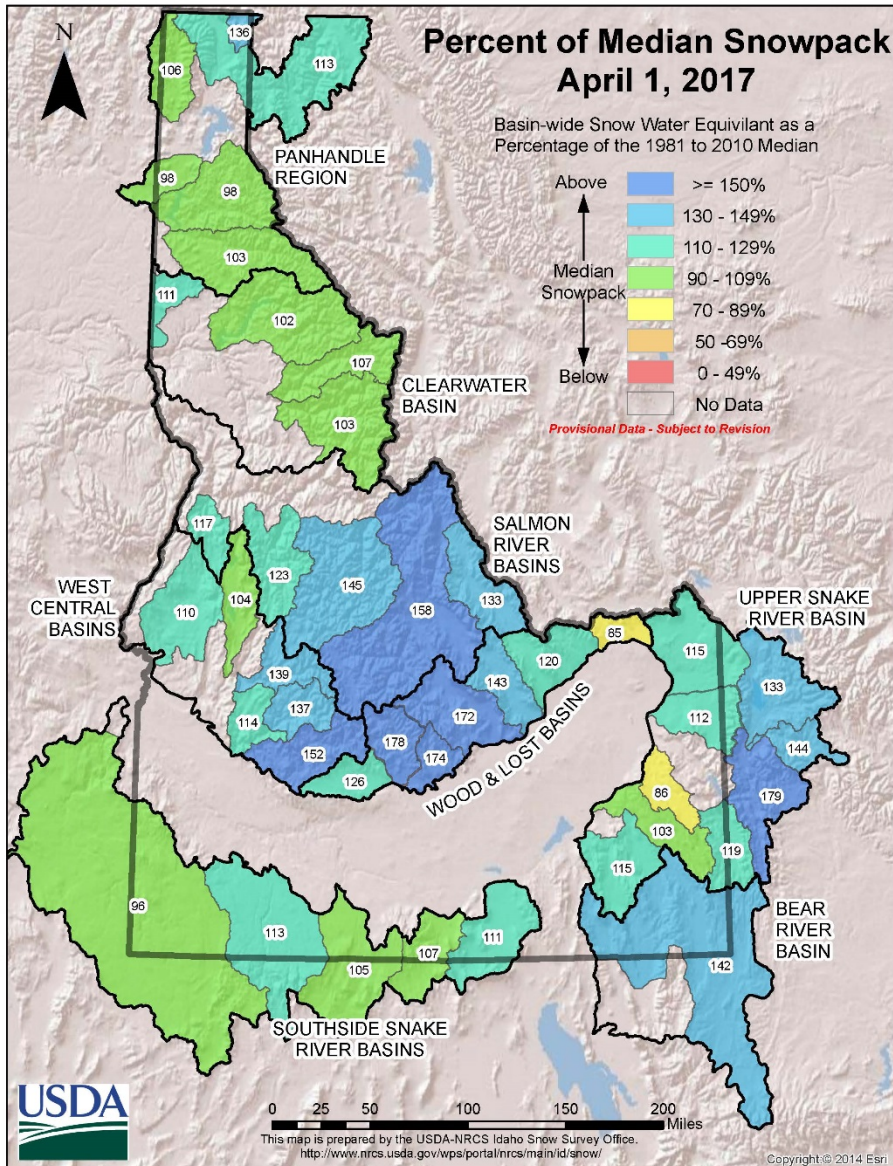
May 11th, 2017

NRCS - Idaho Snow Survey

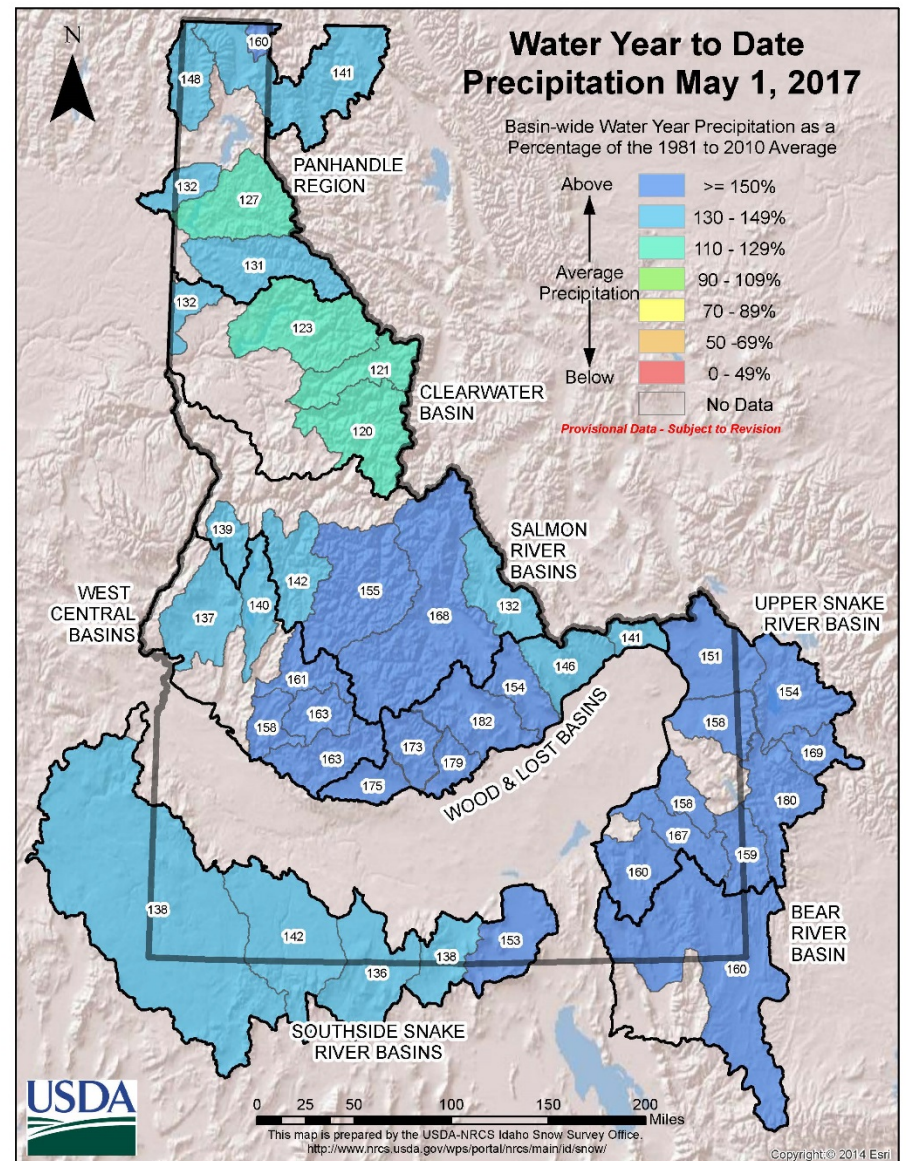
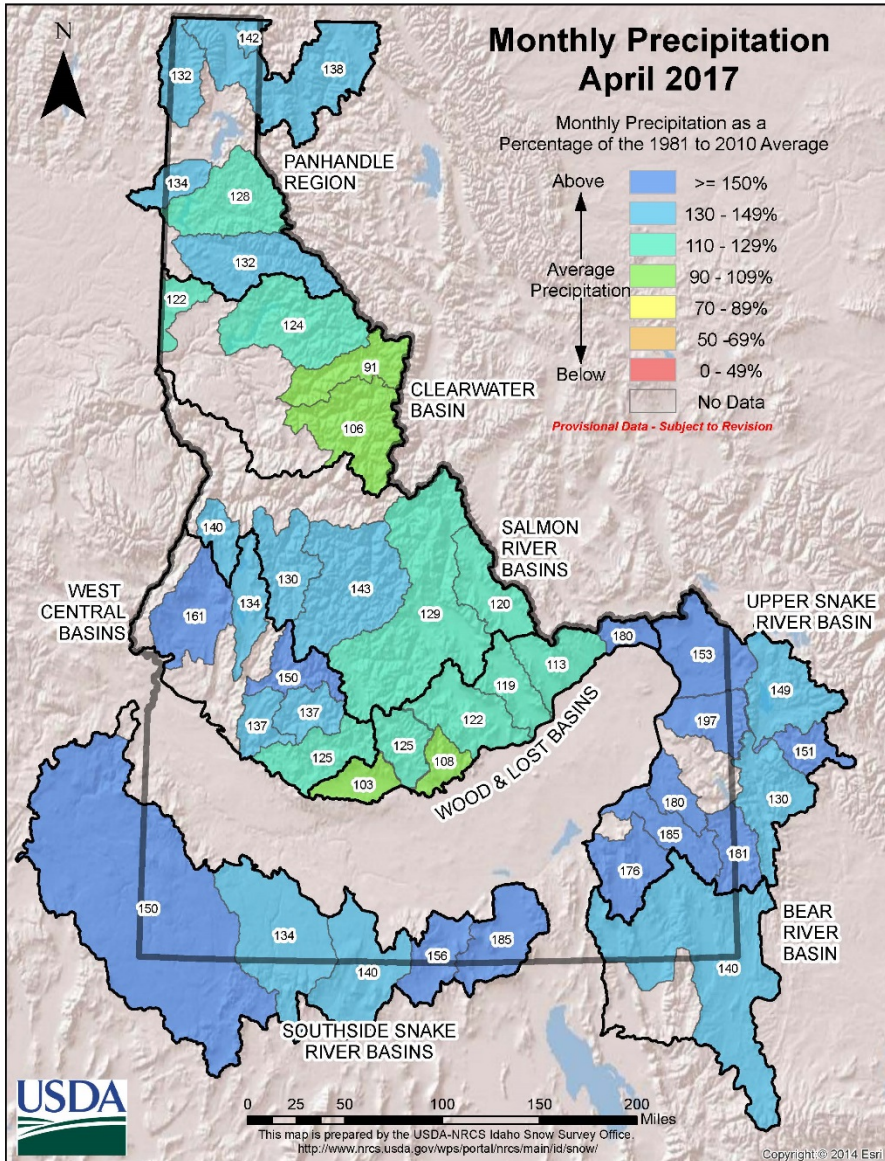
Danny Tappa



April 1 vs. May 1 Snowpack

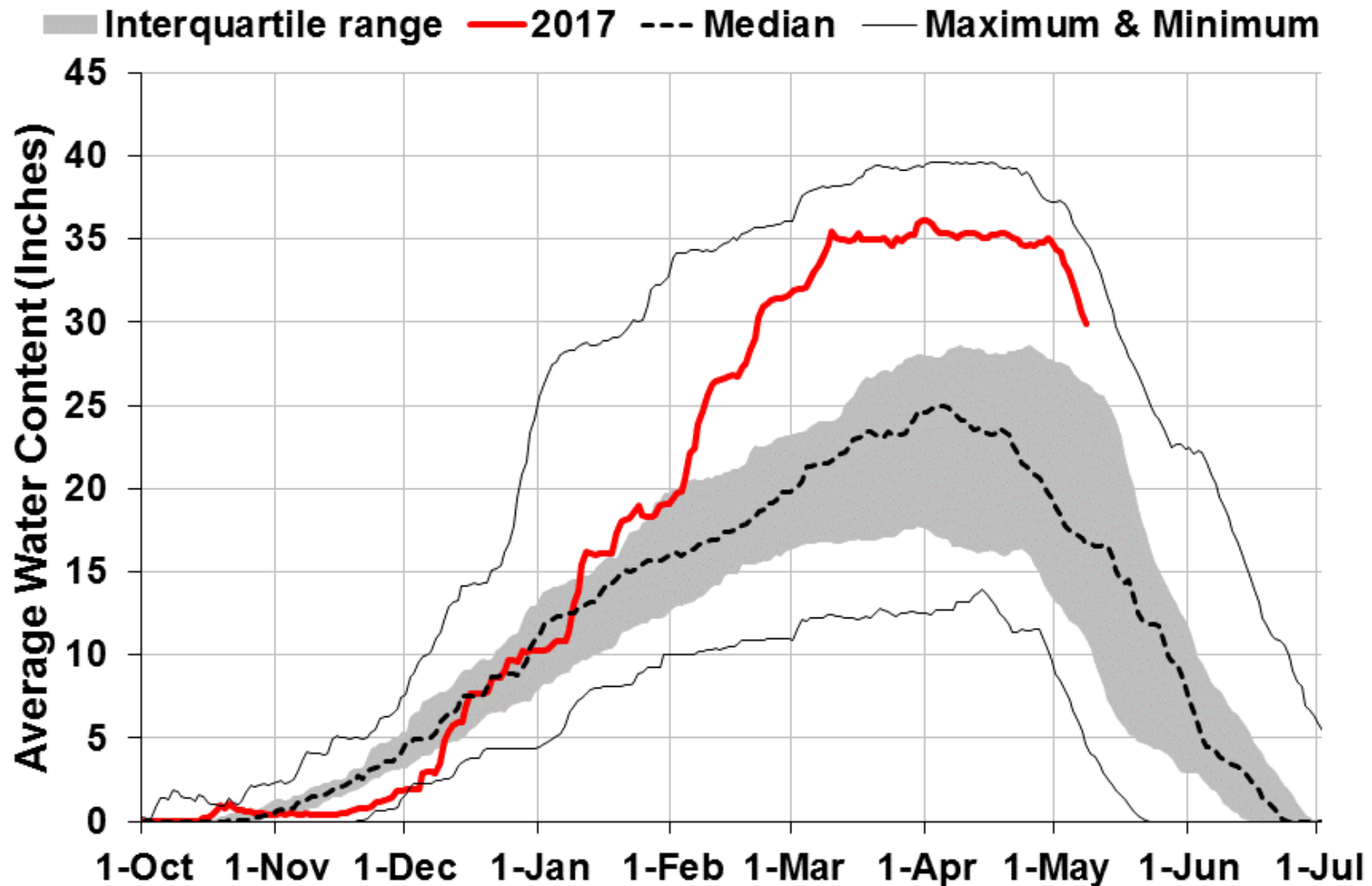


Monthly & Water Year Precipitation



Boise Basin Snowpack

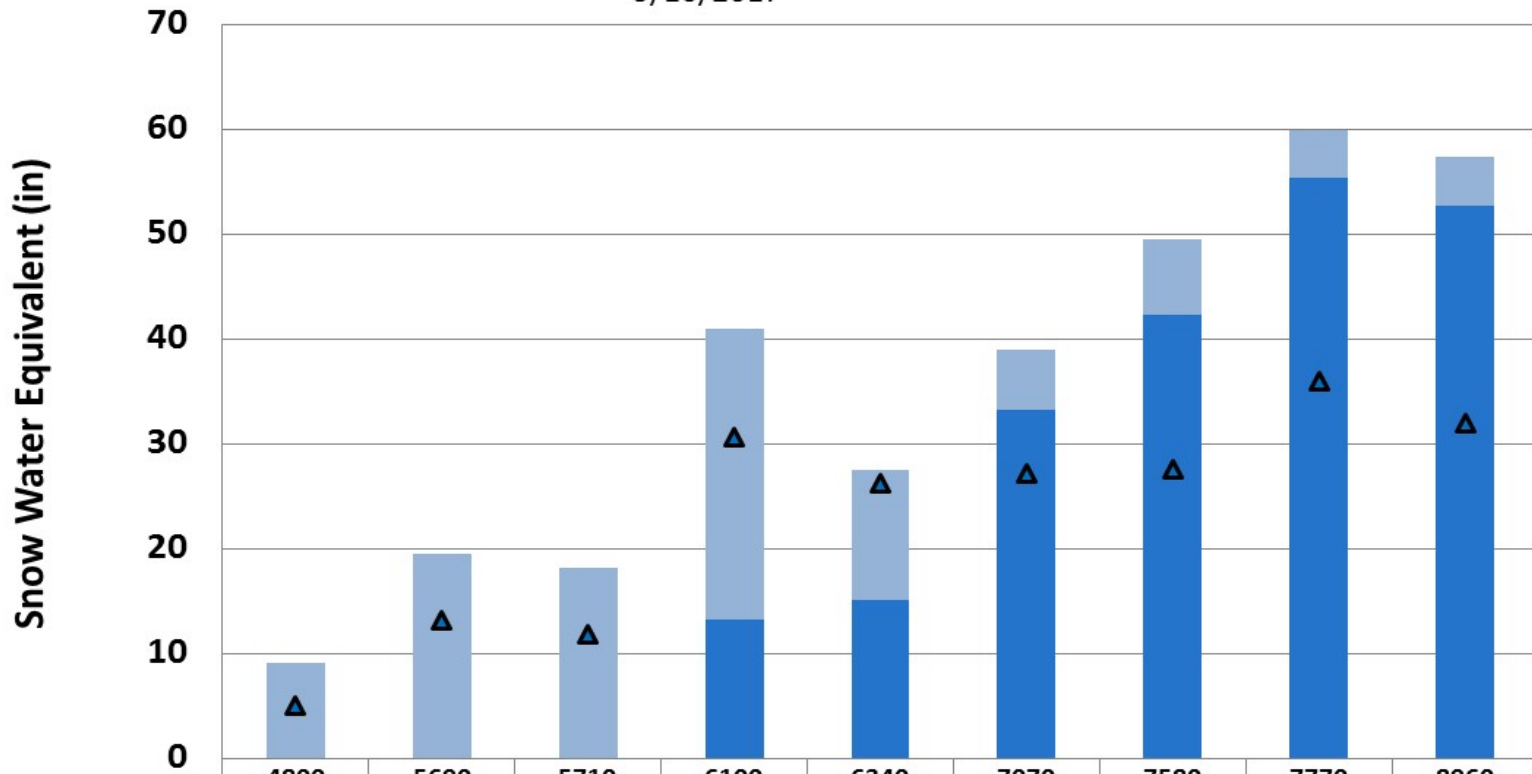
Current Snowpack and Historic Range



Boise Basin Snowpack



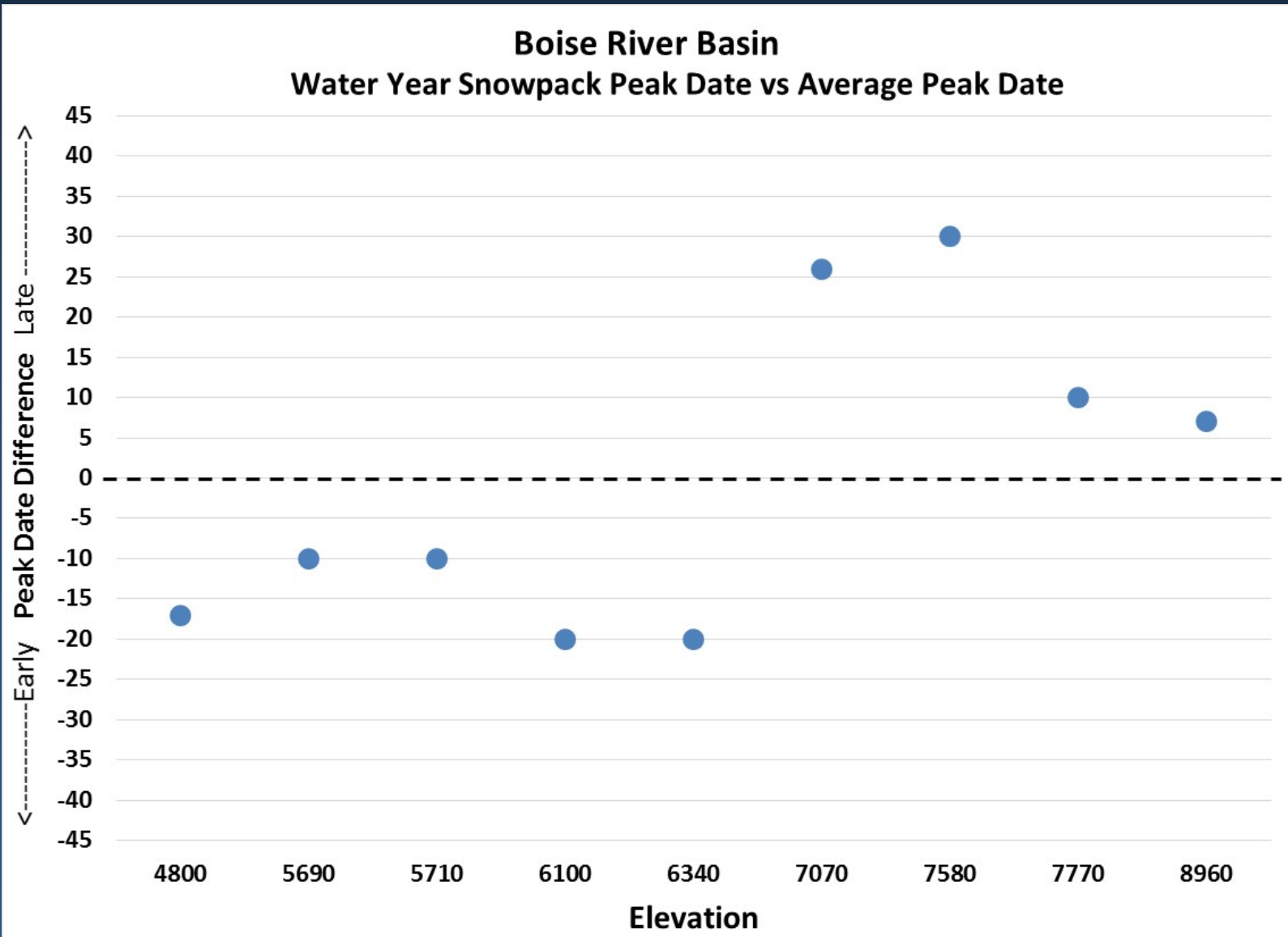
Boise River Basin
Percent Remaining Snowpack
5/10/2017



	4800	5690	5710	6100	6340	7070	7580	7770	8960
■ Peak SWE	9.1	19.5	18.2	40.9	27.5	38.9	49.5	59.9	57.4
■ Current SWE	0	0		13.2	15.1	33.2	42.3	55.3	52.7
▲ Normal Peak	5.0	13.2	11.8	30.6	26.2	27.2	27.5	36.0	32.0
Percent Remaining	0%	0%		32%	55%	85%	85%	92%	92%
Percent of Normal				65%	101%	168%	187%	161%	192%



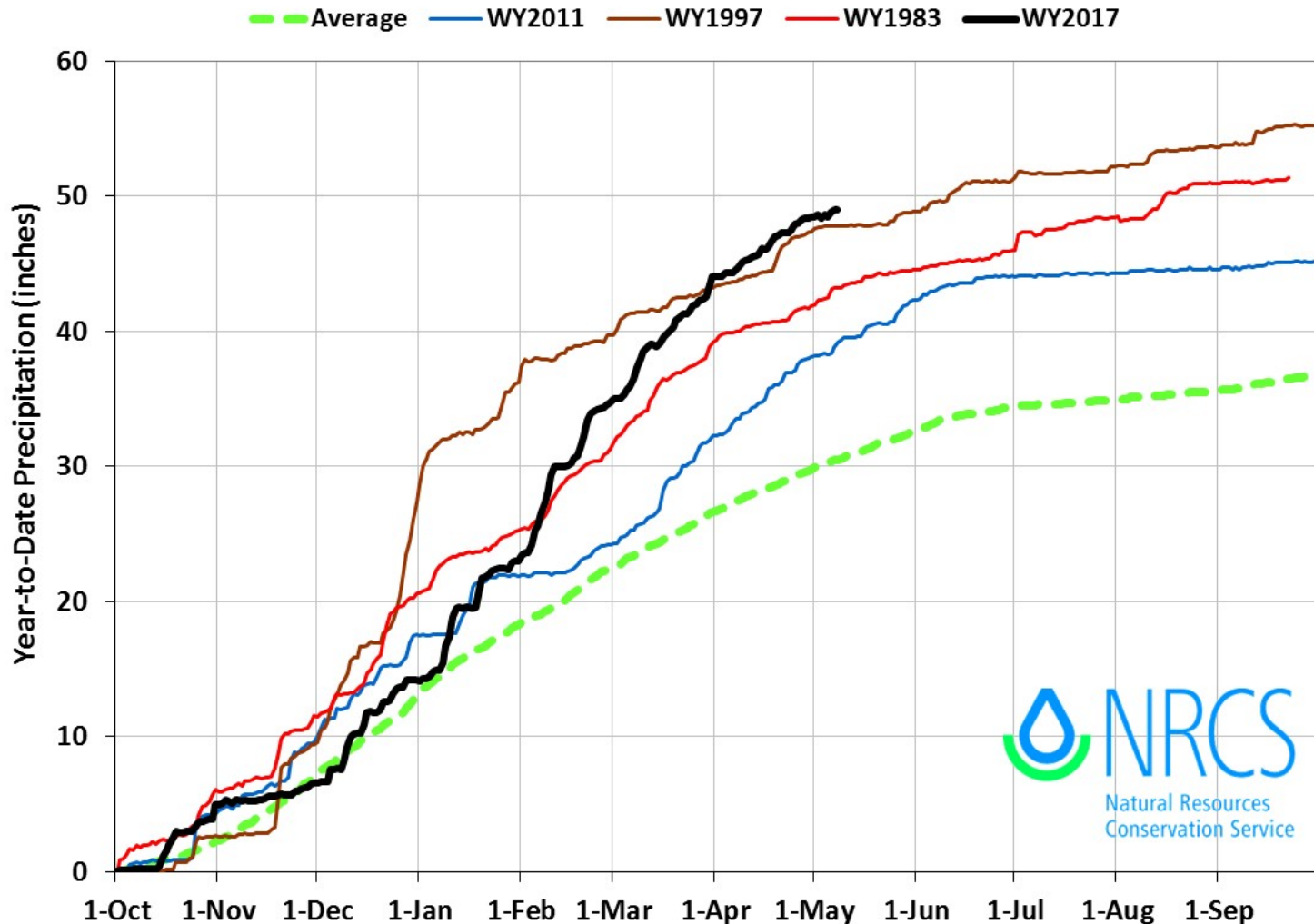
Boise Basin Snowpack



Boise WY Precipitation

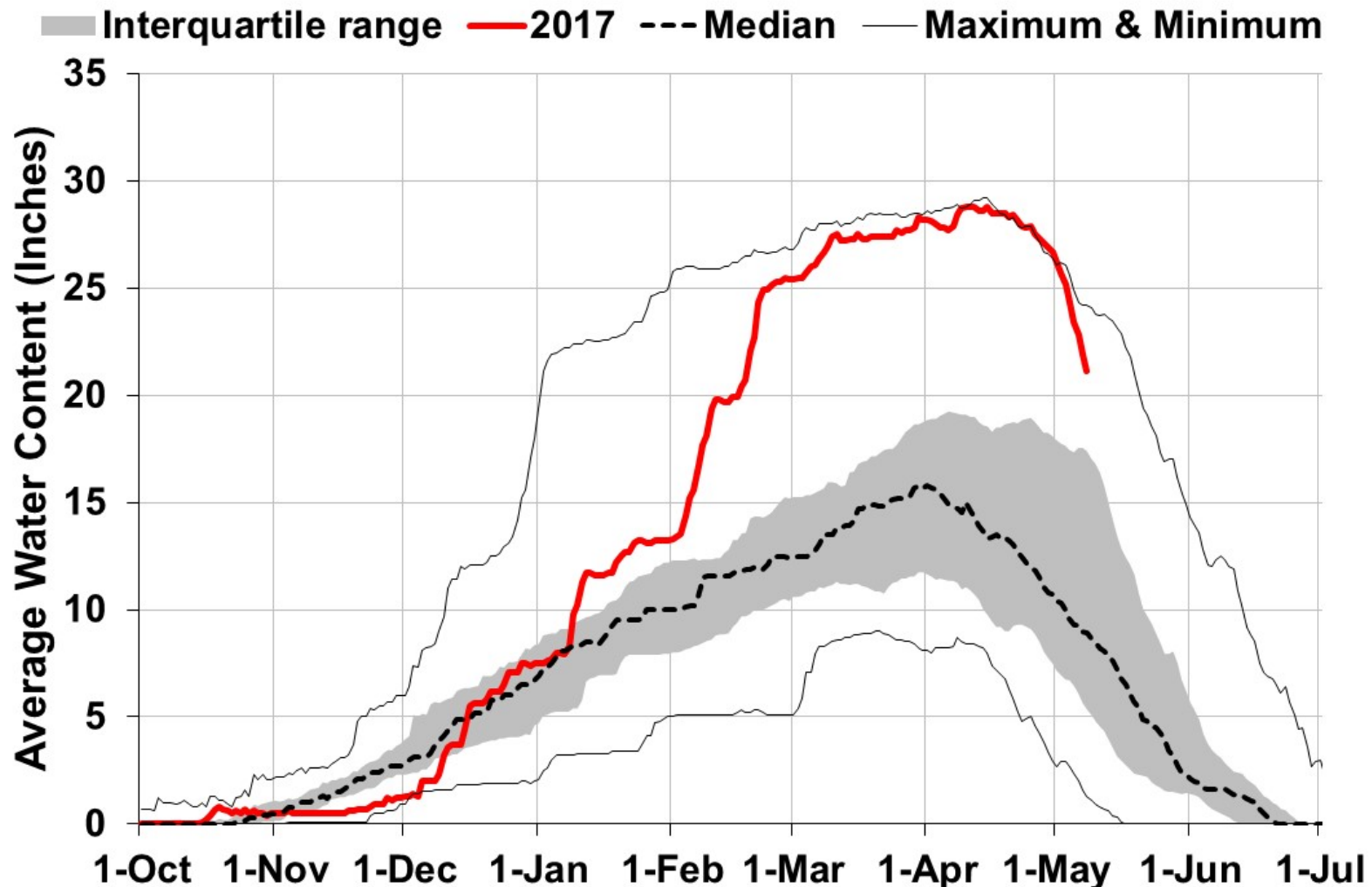
Boise Basin 2017 Precipitation Comparison Graph (9 sites)

Based on Provisional SNOTEL data as of May 09, 2017



Wood Basin Snowpack

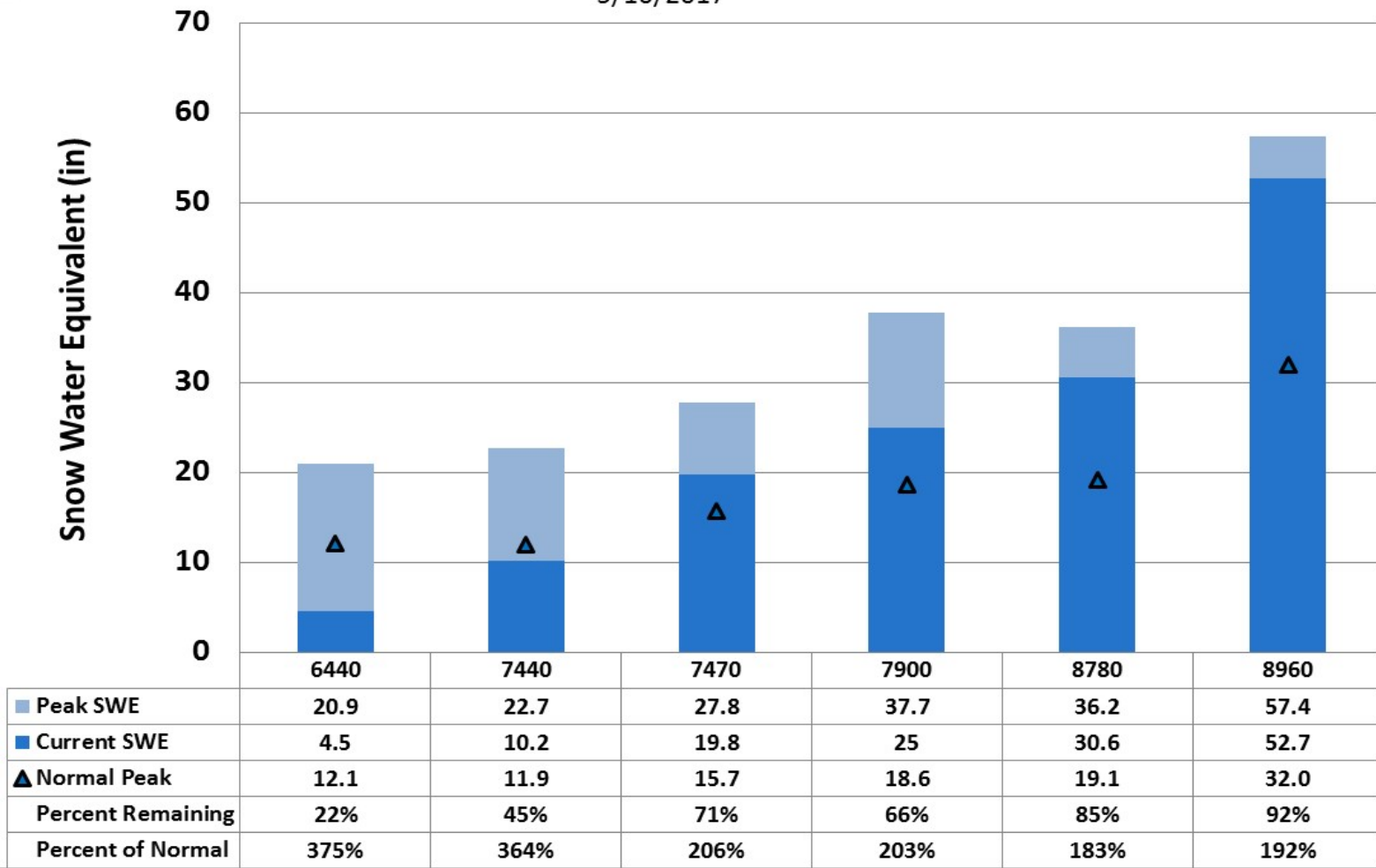
Current Snowpack and Historic Range



Wood Basin Snowpack

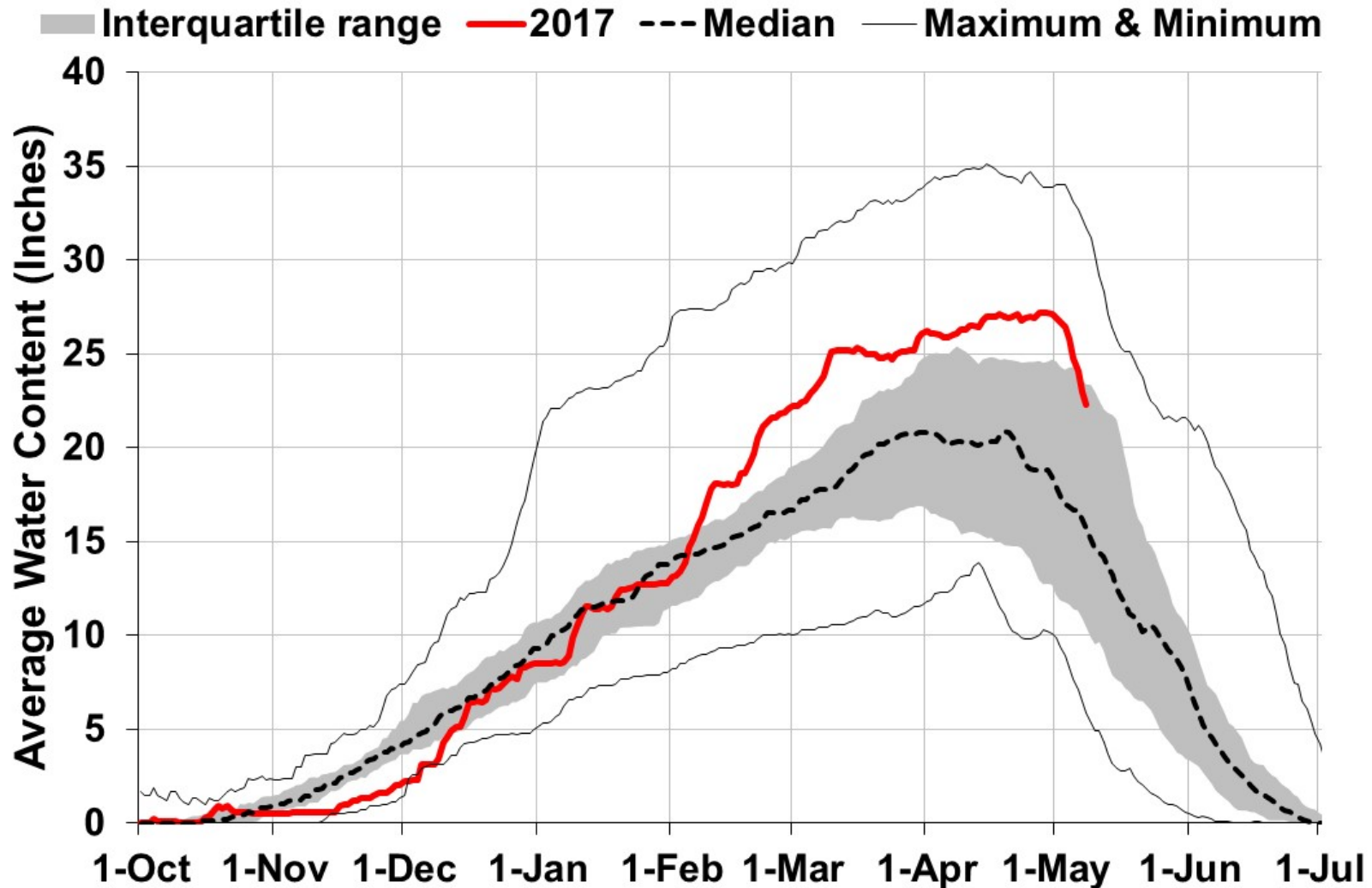


Big Wood above Hailey Percent Remaining Snowpack 5/10/2017

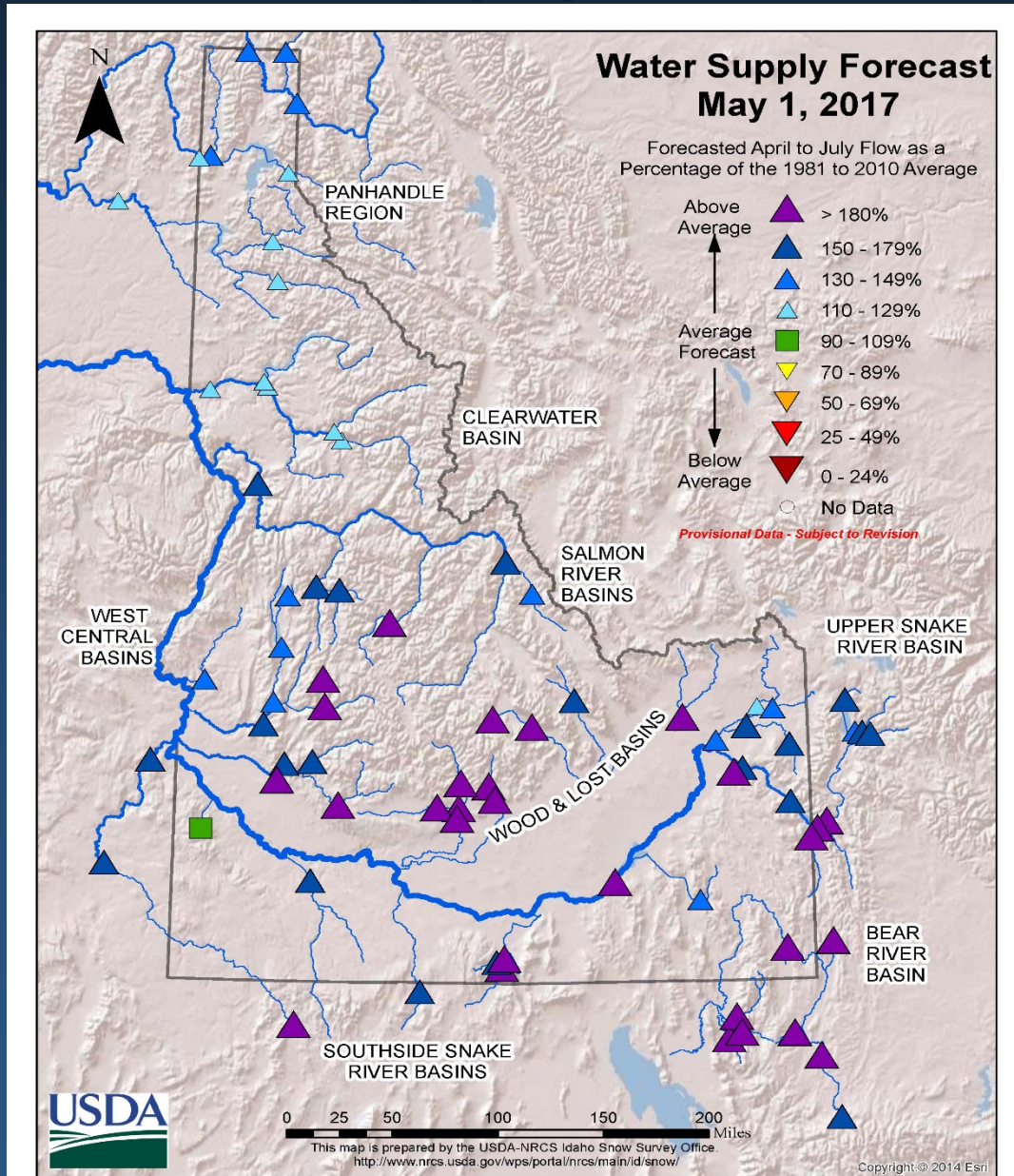


Salmon Basin Snowpack

Current Snowpack and Historic Range



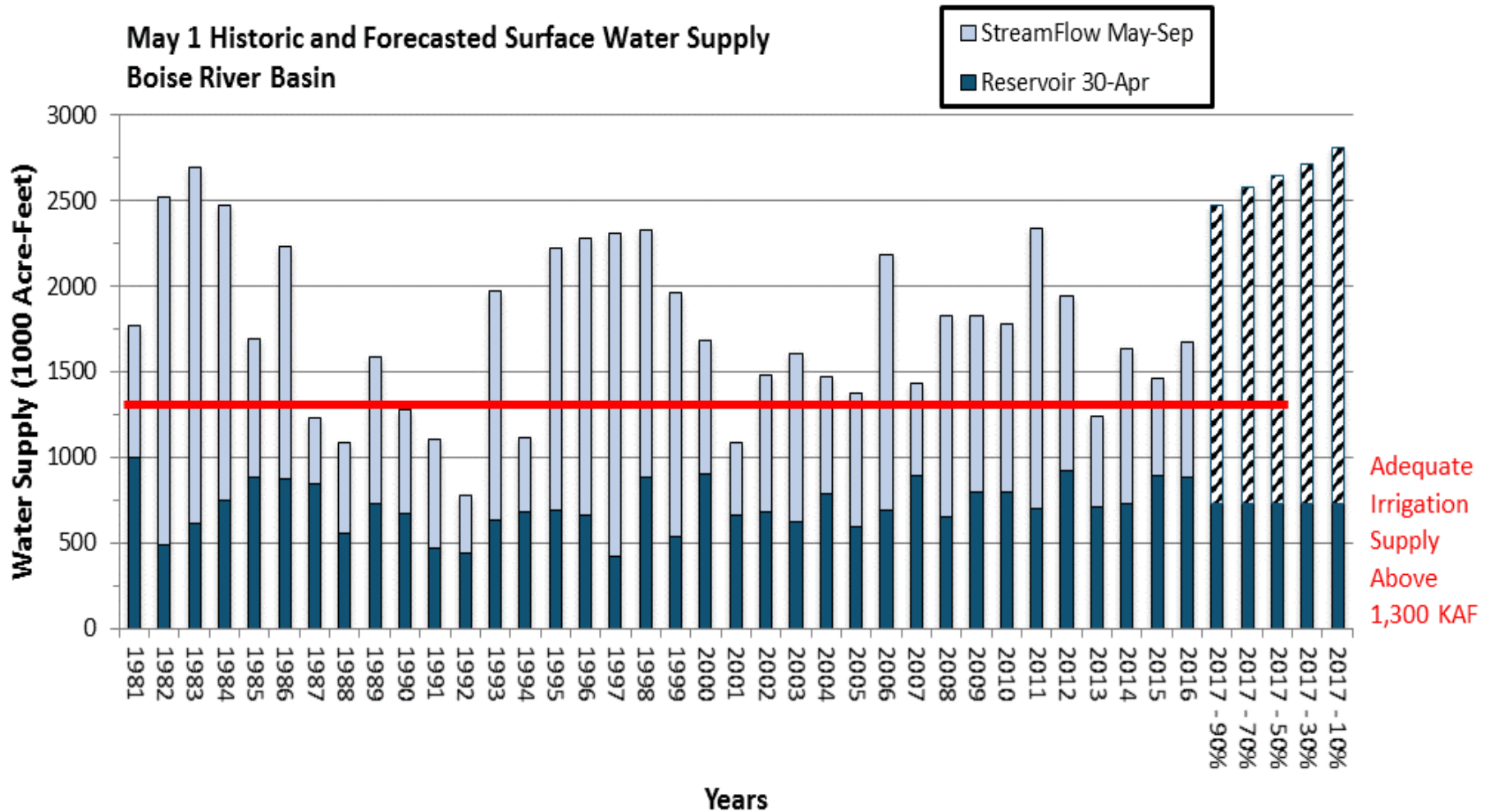
Water Supply Forecasts



Idaho SWSI May 1, 2017

<i>BASIN or REGION</i>	<i>SWSI Value</i>	<i>Most Recent Year With Similar SWSI Value</i>	<i>Agricultural Water Supply Shortage May Occur When SWSI is Less Than</i>
Spokane	2.0	1991	NA
Clearwater	0.9	2012	NA
Salmon	3.0	1996	NA
Weiser	2.3	1996	NA
Payette	3.6	1983	NA
Boise	3.9	1983	-2.0
Big Wood	3.8	1983	0.3
Little Wood	3.8	1995	-1.5
Big Lost	3.6	1983	0.8
Little Lost	3.6	1995	1.5
Teton	3.2	1983	-3.9
Henry's Fork	3.6	1998	-1.7
Snake (Heise)	3.6	1983 / 2011	-1.7
Oakley	3.8	1998	0.1
Salmon Falls	3.8	1986	-0.8
Bruneau	3.2	1995	NA
Owyhee	3.2	2006	-1.5
Bear River	2.7	1997	-3.9

Boise Basin Water Supply



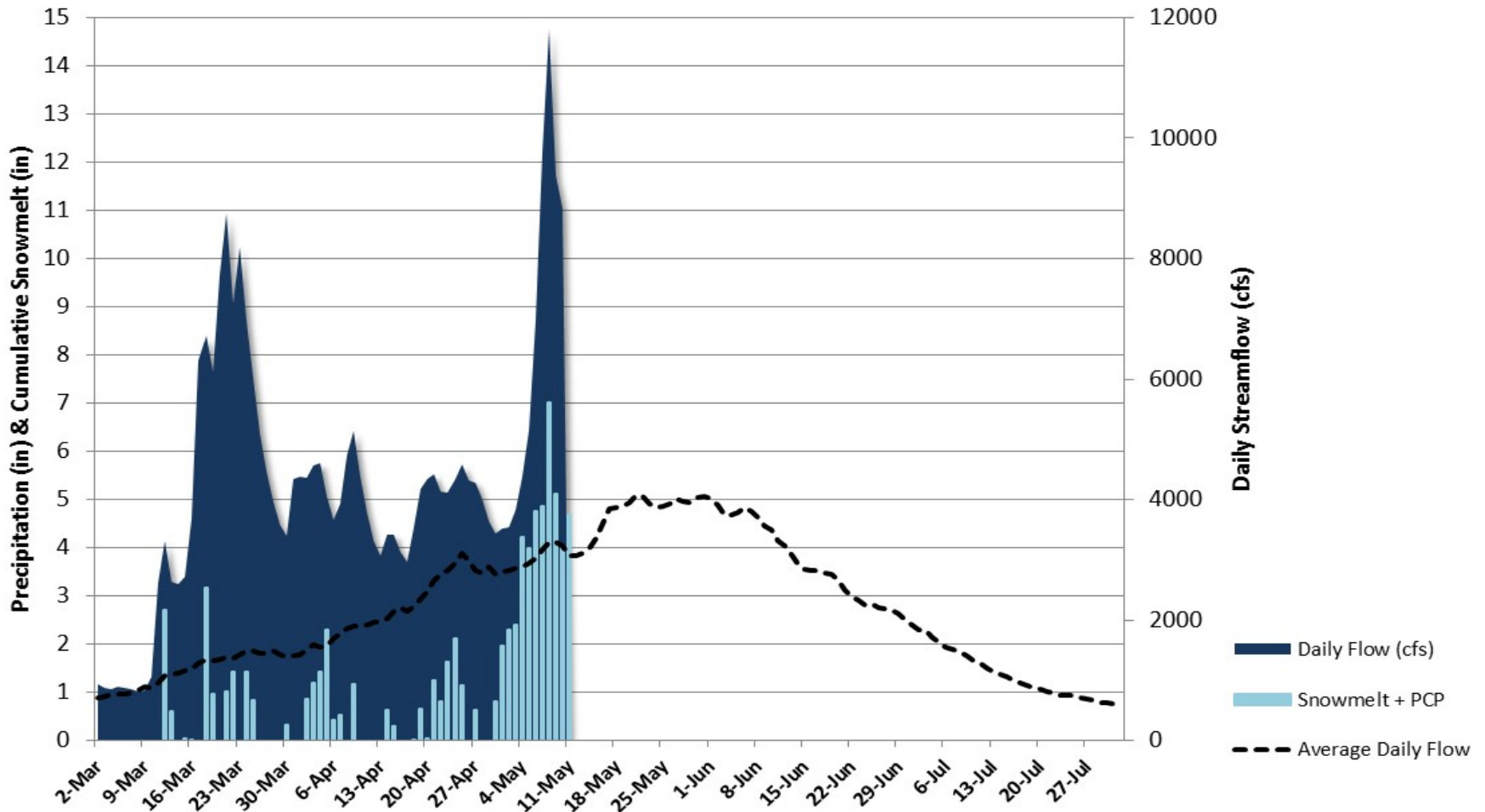
Boise River near Twin Springs



Cumulative Melt and Precipitation vs Streamflow

Boise R nr Twin Springs

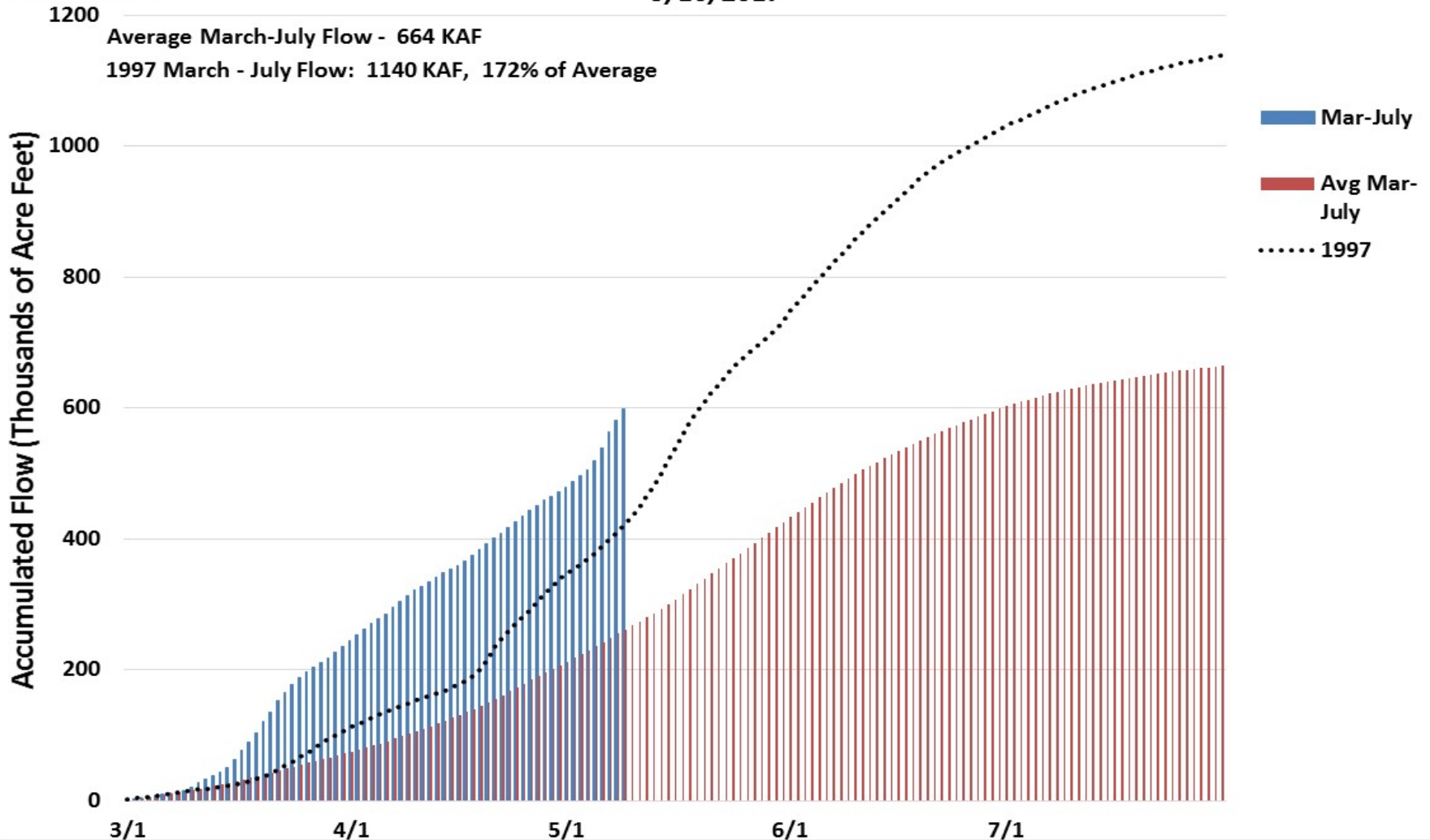
5/10/2017



Boise River near Twin Springs

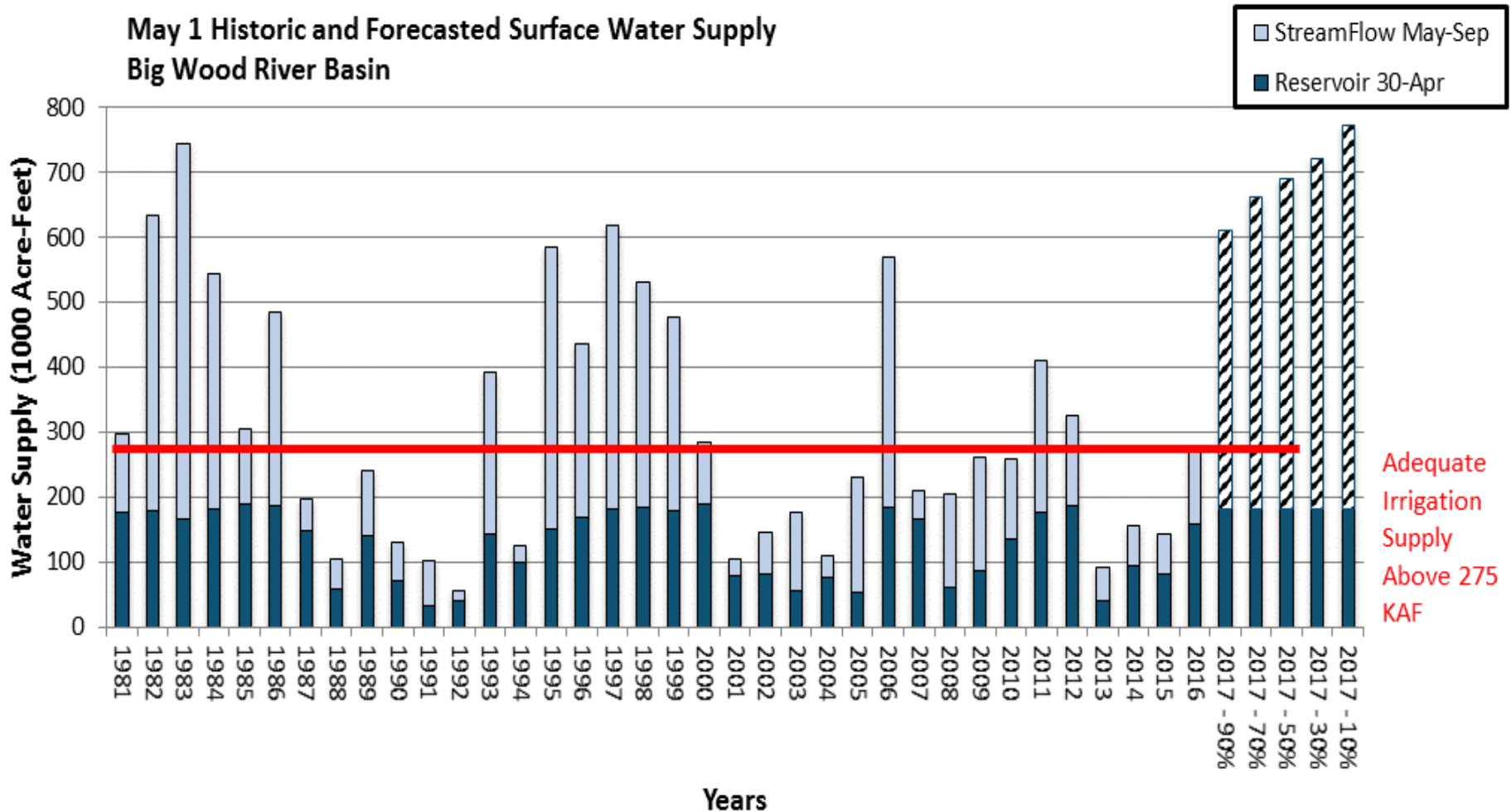


Boise R nr Twin Springs
Accumulated Flow March 1st - July 31st vs Average
5/10/2017



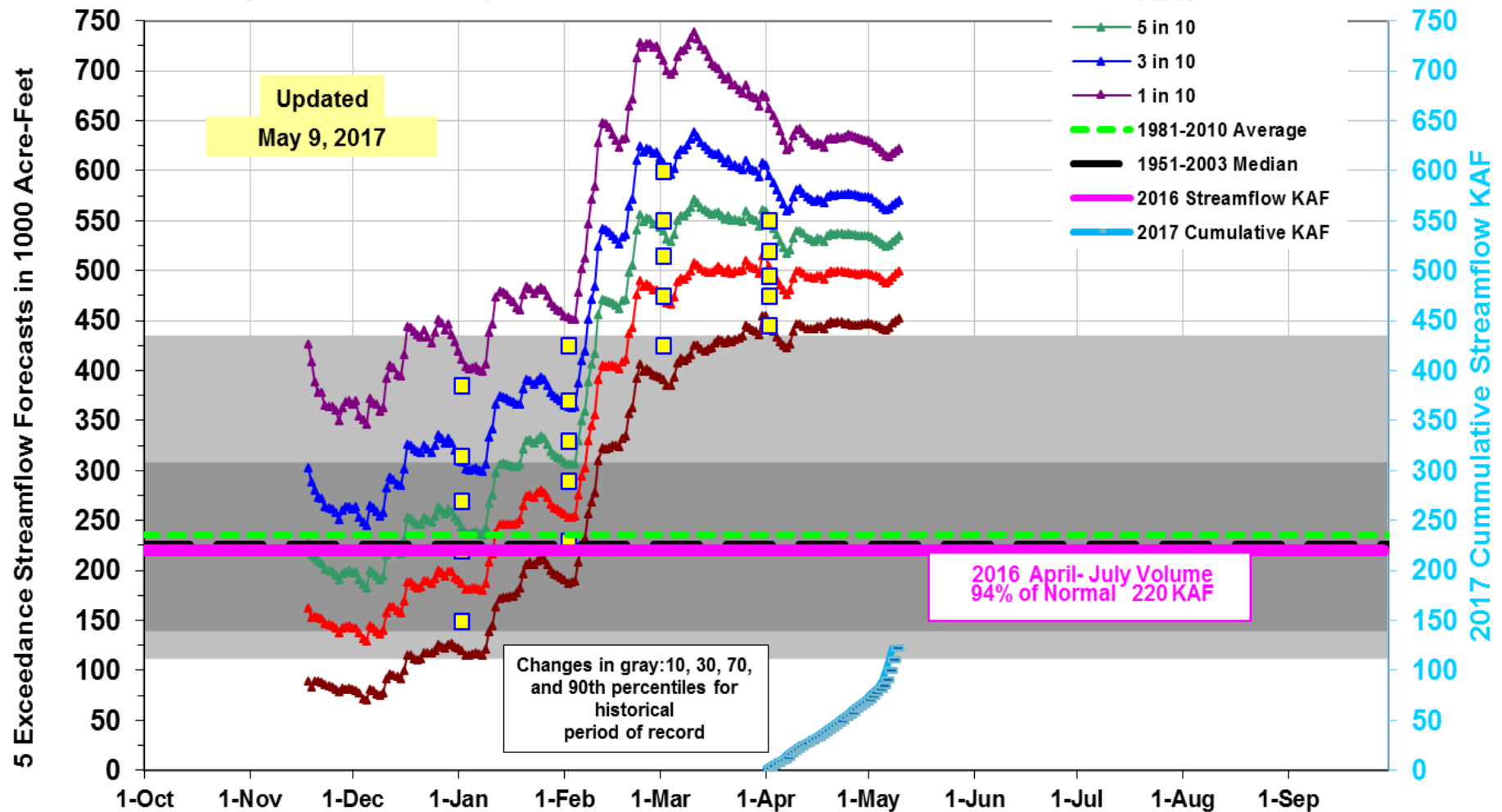
Big Wood Basin Water Supply

May 1 Historic and Forecasted Surface Water Supply
Big Wood River Basin

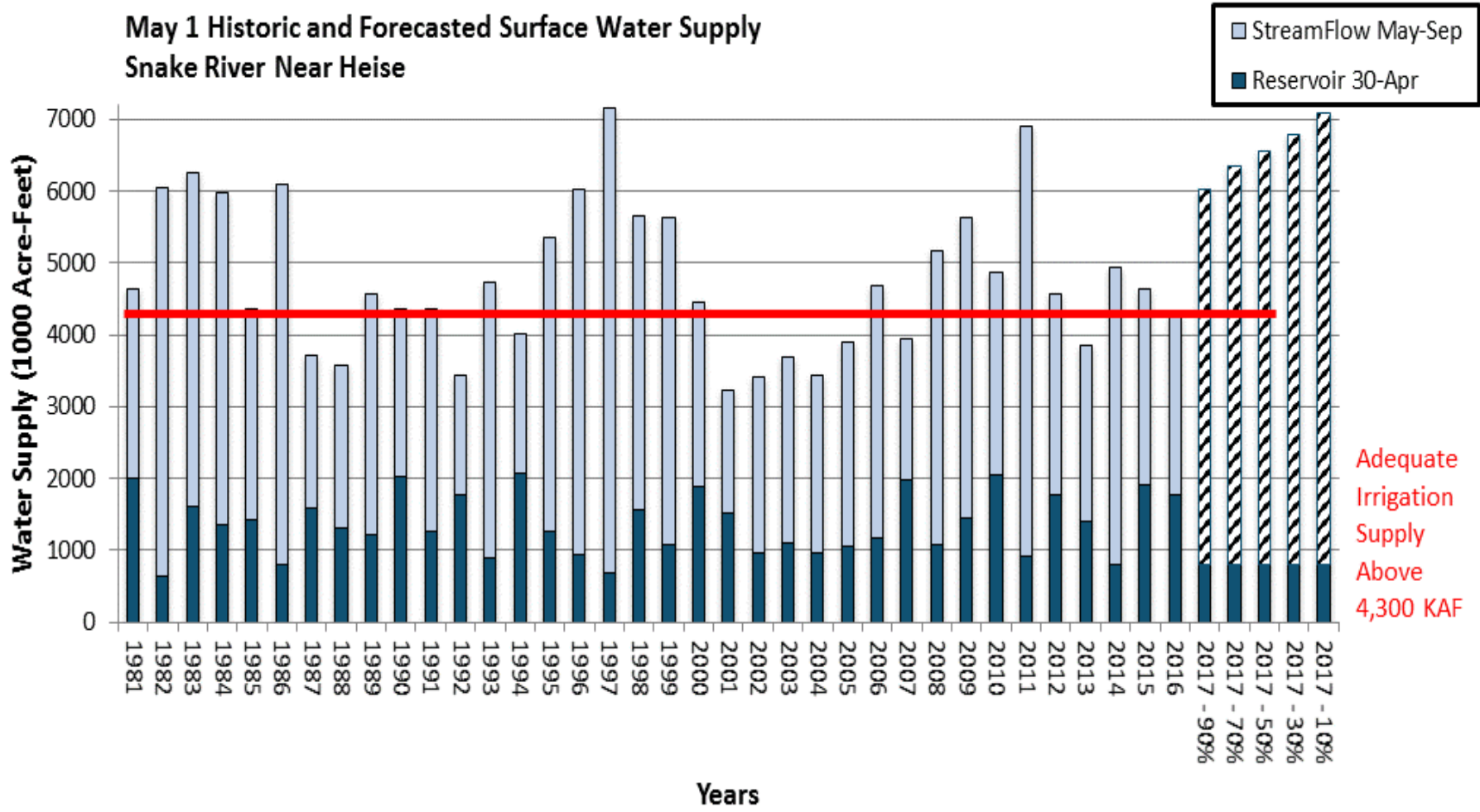


Big Wood Basin Forecast

2017 Big Wood River at Hailey: Apr-Jul Volume
NRCS Monthly Forecasts are Squares



Snake River Heise Water Supply



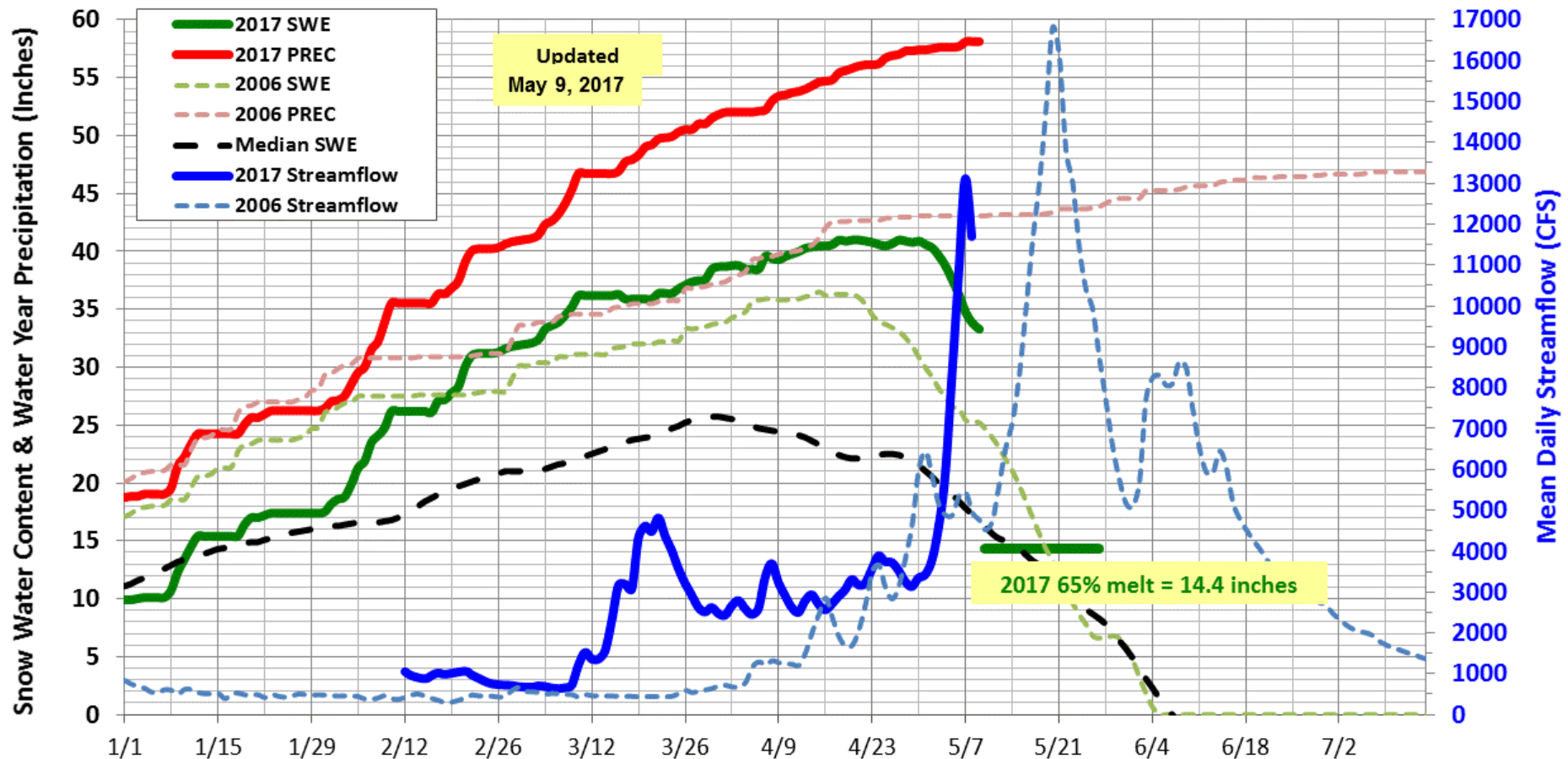
Water Supply – other highlights

- Owyhee River peak has passed, flows remain high.
- Releases being made from Salmon Falls & Oakley Reservoirs.
- 2017 runoff should provide Bear Lake carryover for several years (like 2011).
- Teton River snowmelt peak is likely 3-5 weeks out.



Middle Fork Salmon Peak Flow

2017 & 2006 Banner Summit SNOTEL and MF Salmon River at MF Lodge



In ABOVE average years, the MF Salmon River experiences a snowmelt streamflow peak or increase when Banner Summit is 60-70% melted (2017).

Questions?

