

# RECLAMATION

*Managing Water in the West*

## Idaho Water Supply Committee Meeting

Southwest Idaho Report

April 13, 2017

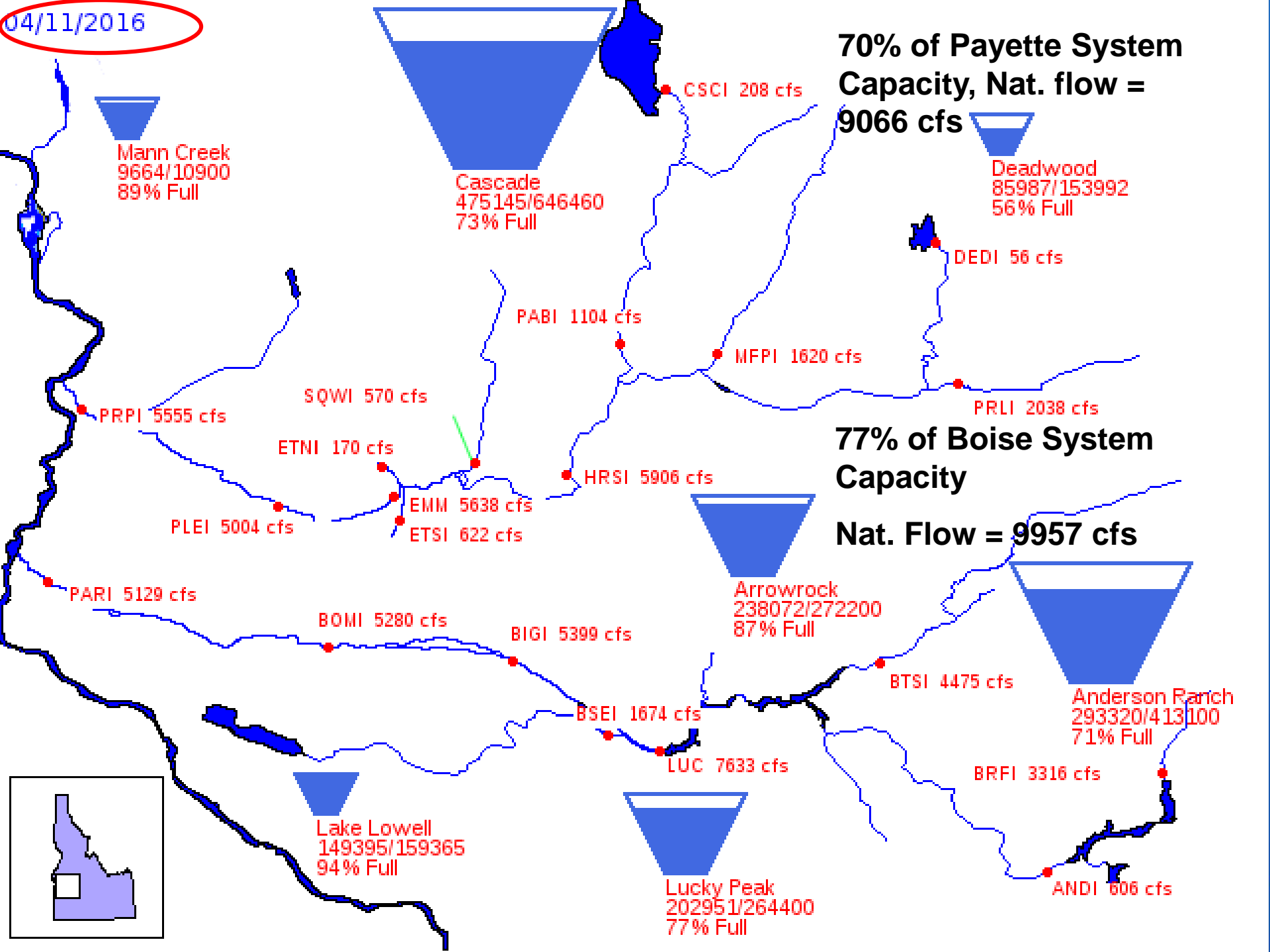


U.S. Department of the Interior  
Bureau of Reclamation



RECLAMATION

04/11/2016



Mann Creek  
9664/10900  
89% Full

Cascade  
475145/646460  
73% Full

Deadwood  
85987/153992  
56% Full

CSCI 208 cfs

DEDI 56 cfs

PABI 1104 cfs

MFPI 1620 cfs

PRLI 2038 cfs

**77% of Boise System Capacity**

**Nat. Flow = 9957 cfs**

PRPI 5555 cfs

SQWI 570 cfs

ETNI 170 cfs

HRSI 5906 cfs

PLEI 5004 cfs

EMM 5638 cfs

ETSI 622 cfs

Arrowrock  
238072/272200  
87% Full

PARI 5129 cfs

BOMI 5280 cfs

BIGI 5399 cfs

Anderson Ranch  
293320/413100  
71% Full

BTSI 4475 cfs

BSEI 1674 cfs

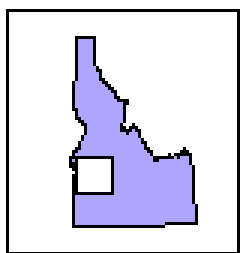
LUC 7633 cfs

BRFI 3316 cfs

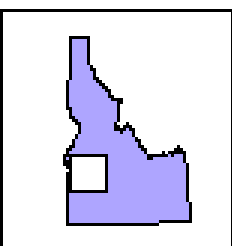
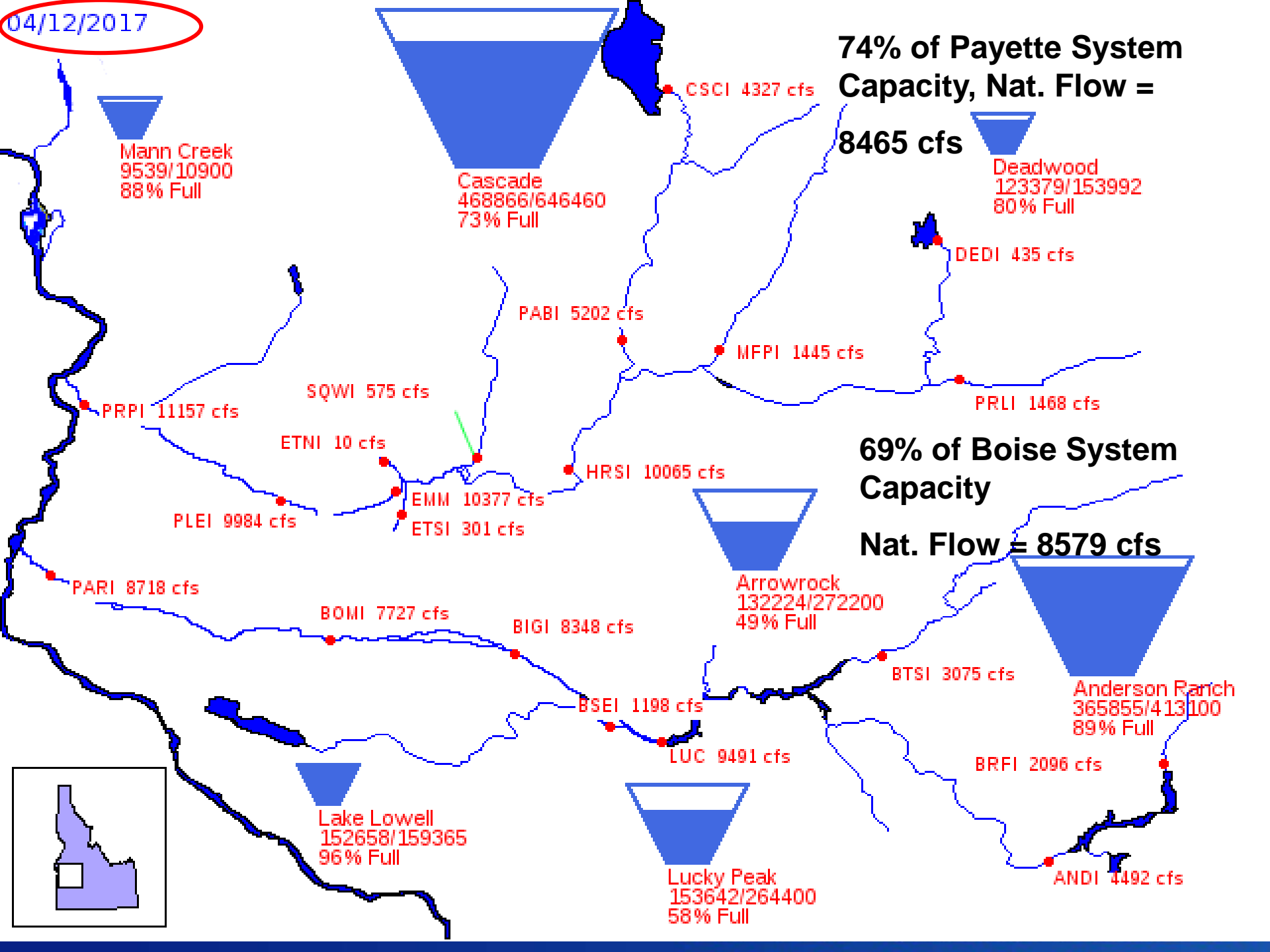
Lake Lowell  
149395/159365  
94% Full

Lucky Peak  
202951/264400  
77% Full

ANDI 606 cfs

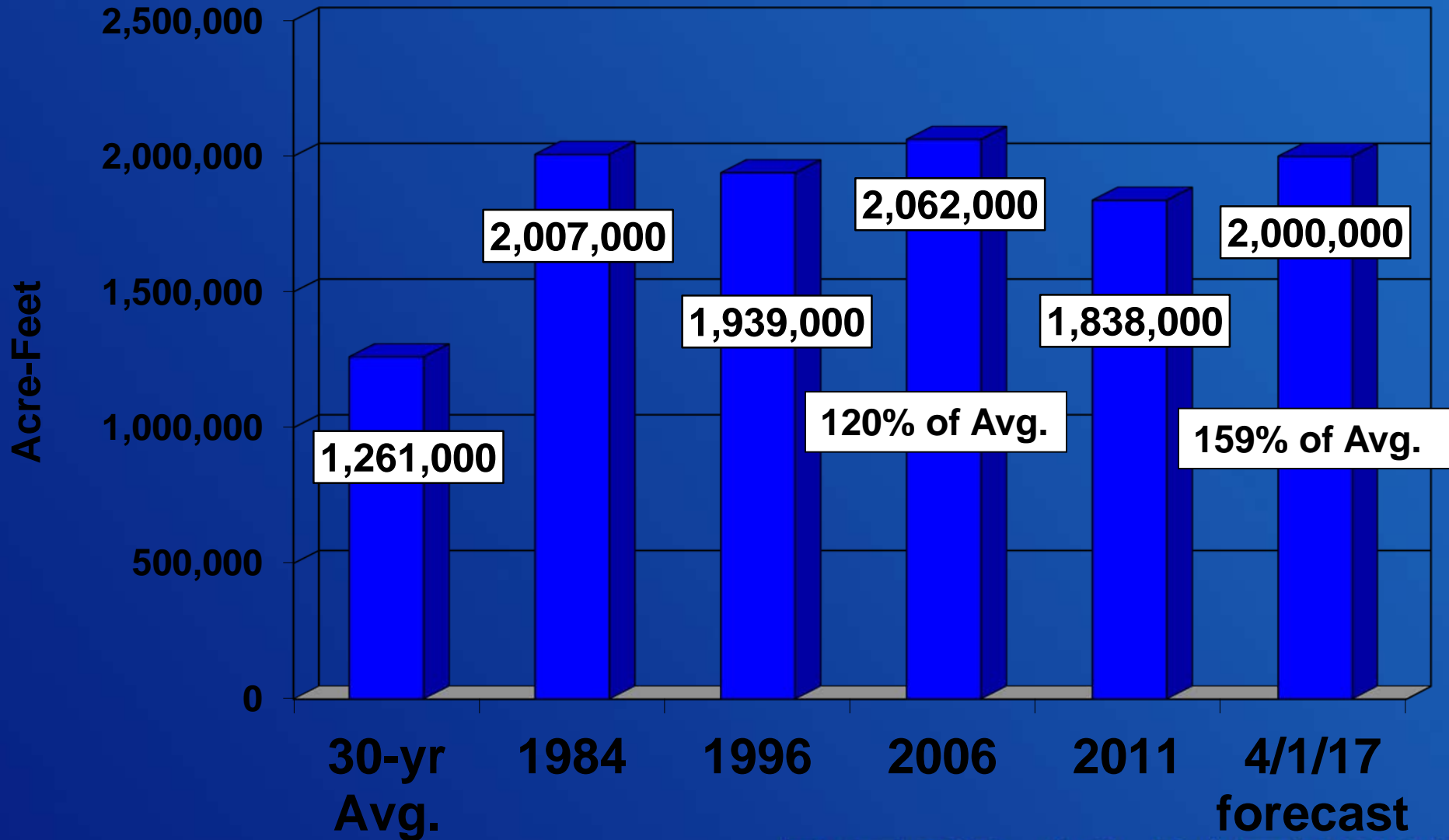


04/12/2017



# Boise Basin Runoff

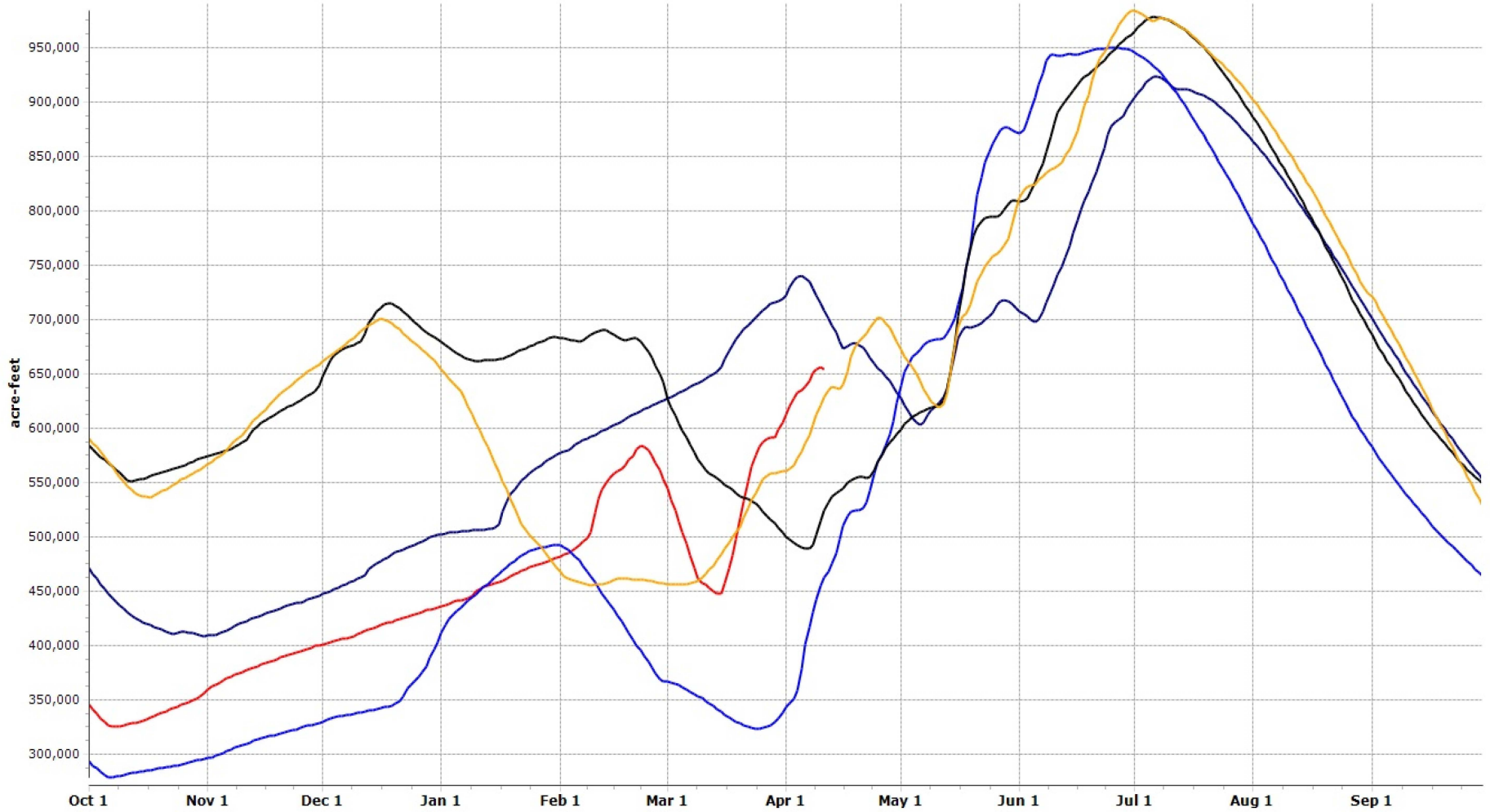
April 1 – July 31



RECLAMATION

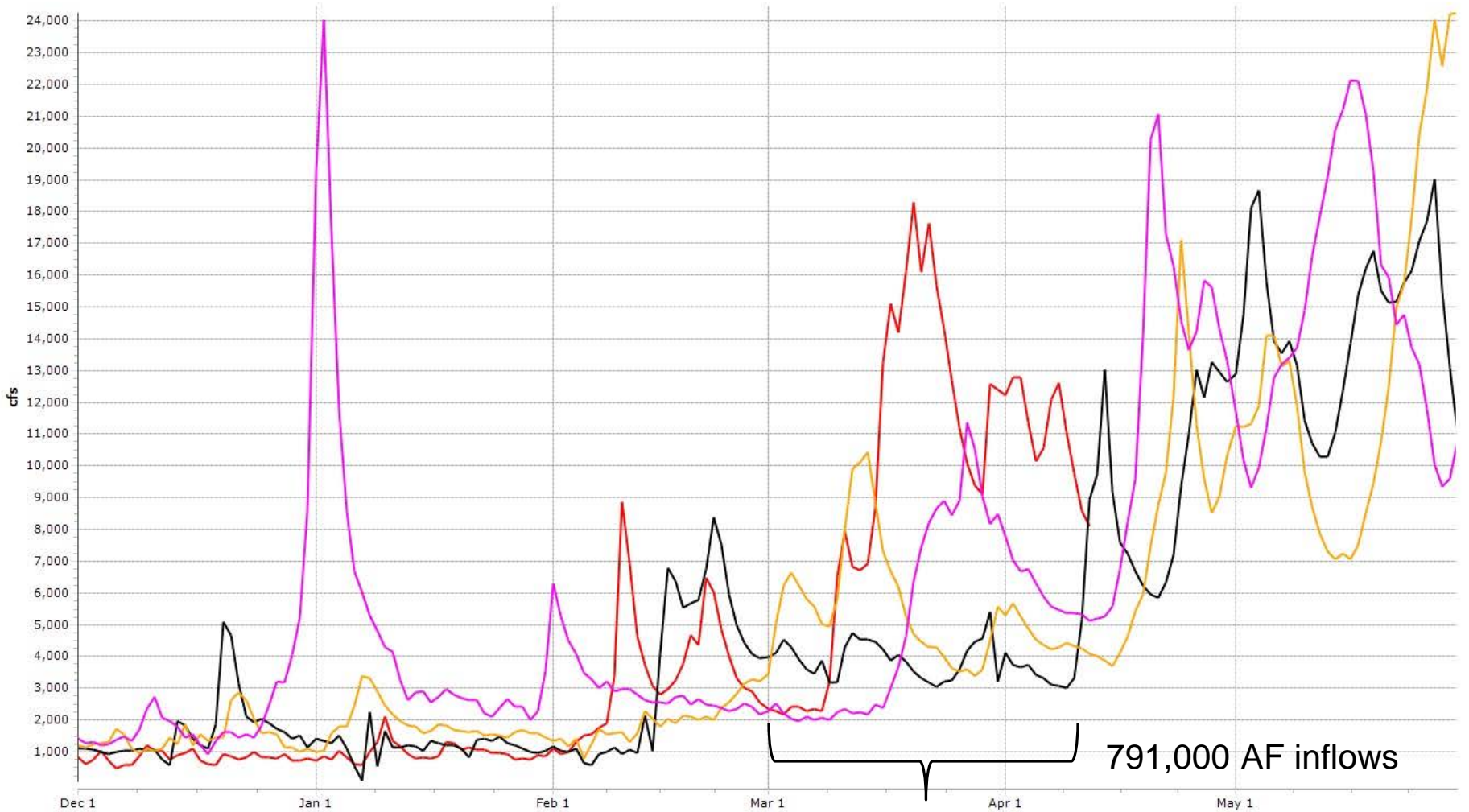
# Boise River Reservoir System Storage (capacity = 950,000 ac-ft)

2017 2011 2006 1996 1984



# Boise Reservoir System Inflows

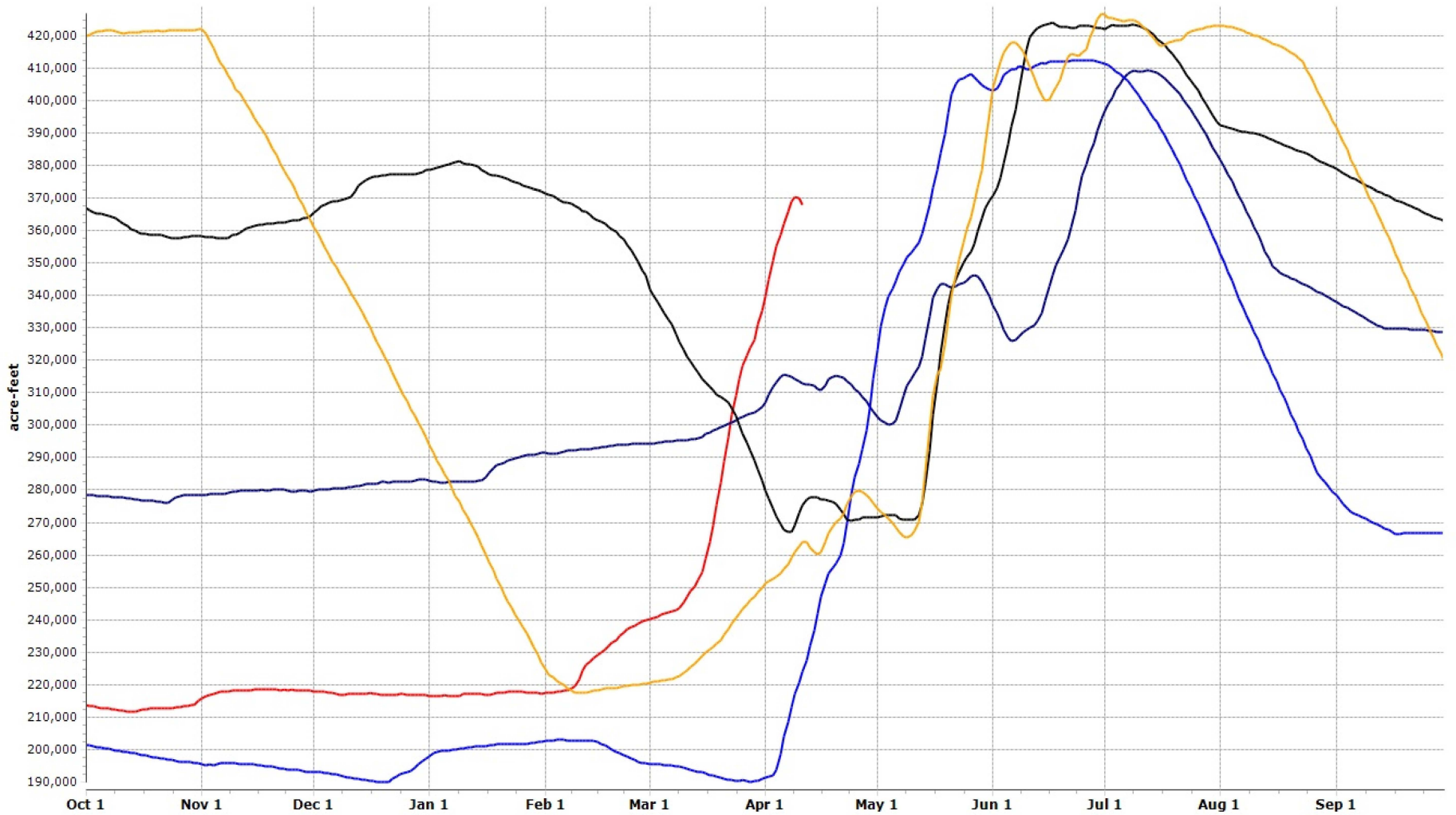
2017 1982 1983 1997



# RECLAMATION

# Anderson Ranch Reservoir Storage (capacity = 413,000 ac-ft)

2017 2011 2006 1996 1984

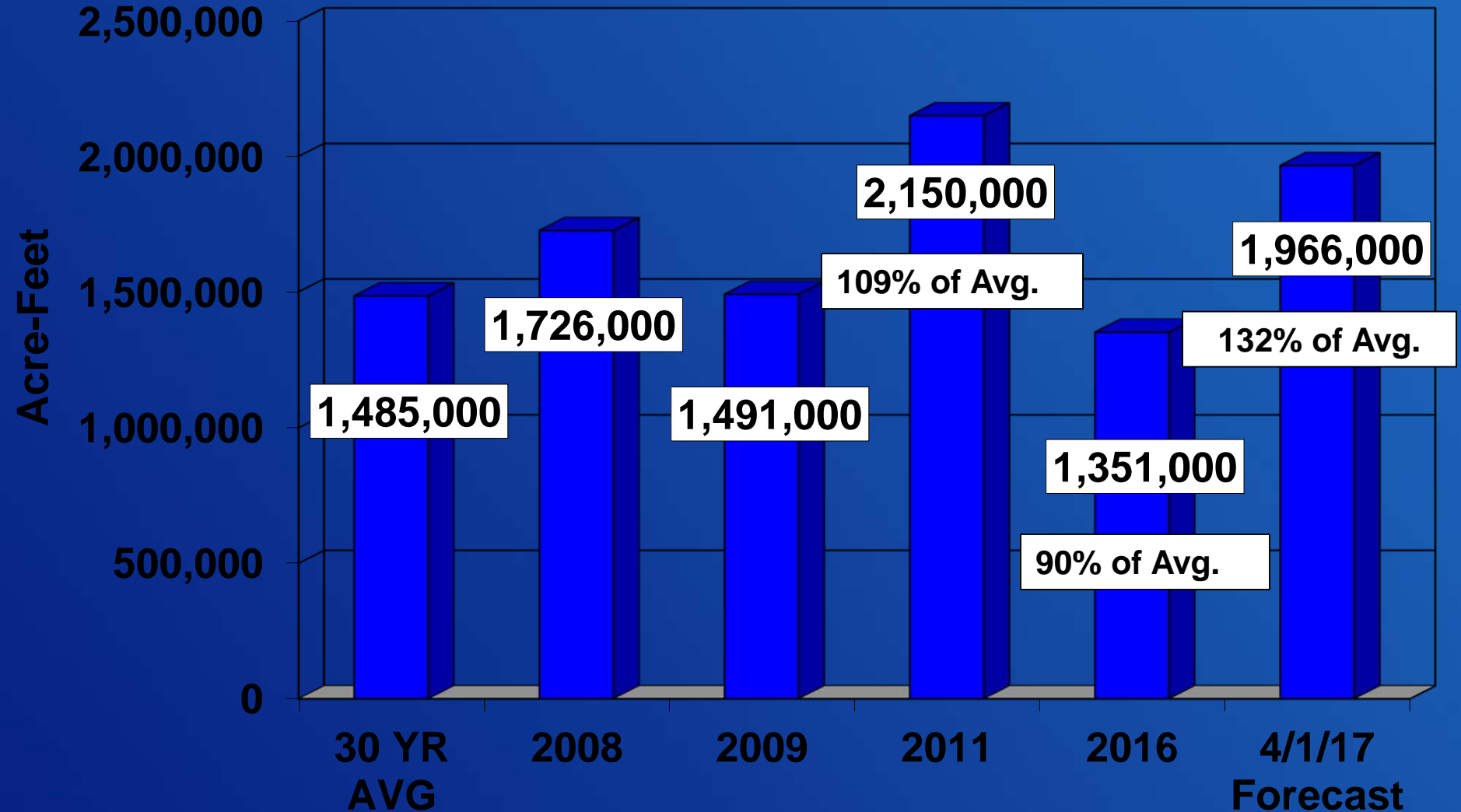


# RECLAMATION



# Payette River Runoff at Horseshoe Bend

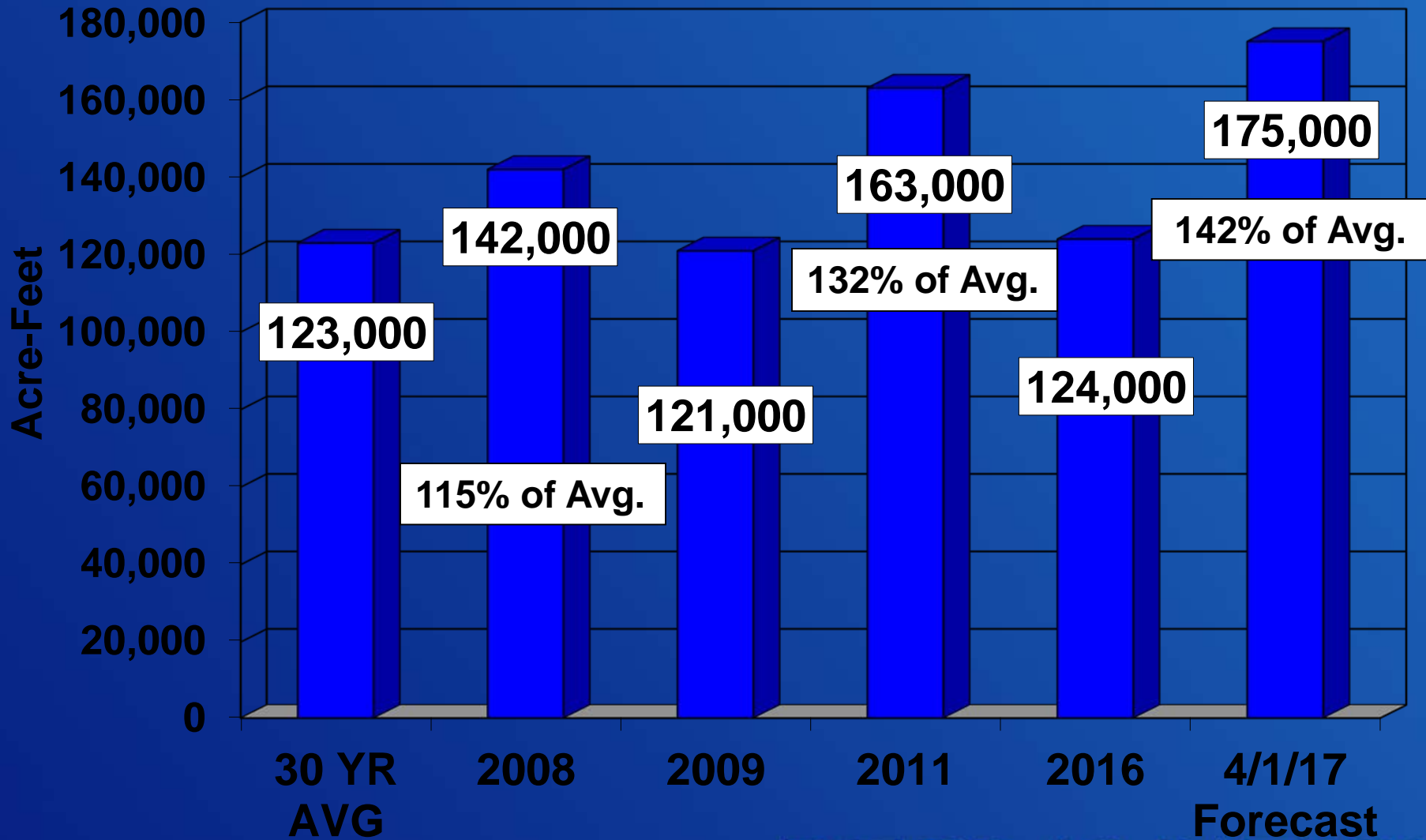
## April 1 – July 31



RECLAMATION

# Deadwood Reservoir Inflows

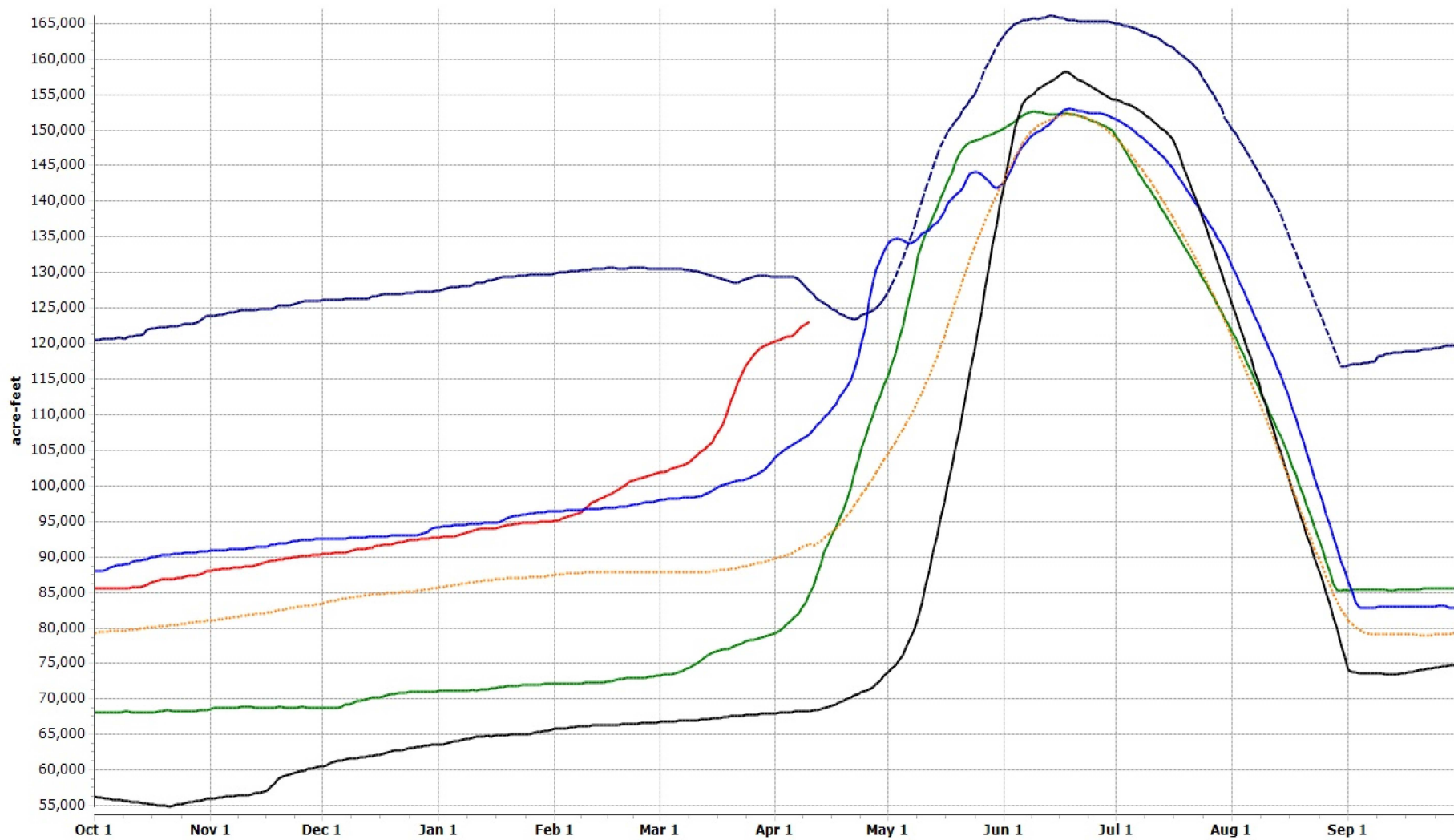
April 1 – July 31



RECLAMATION

# Deadwood Reservoir Storage (capacity = 154,000 ac-ft)

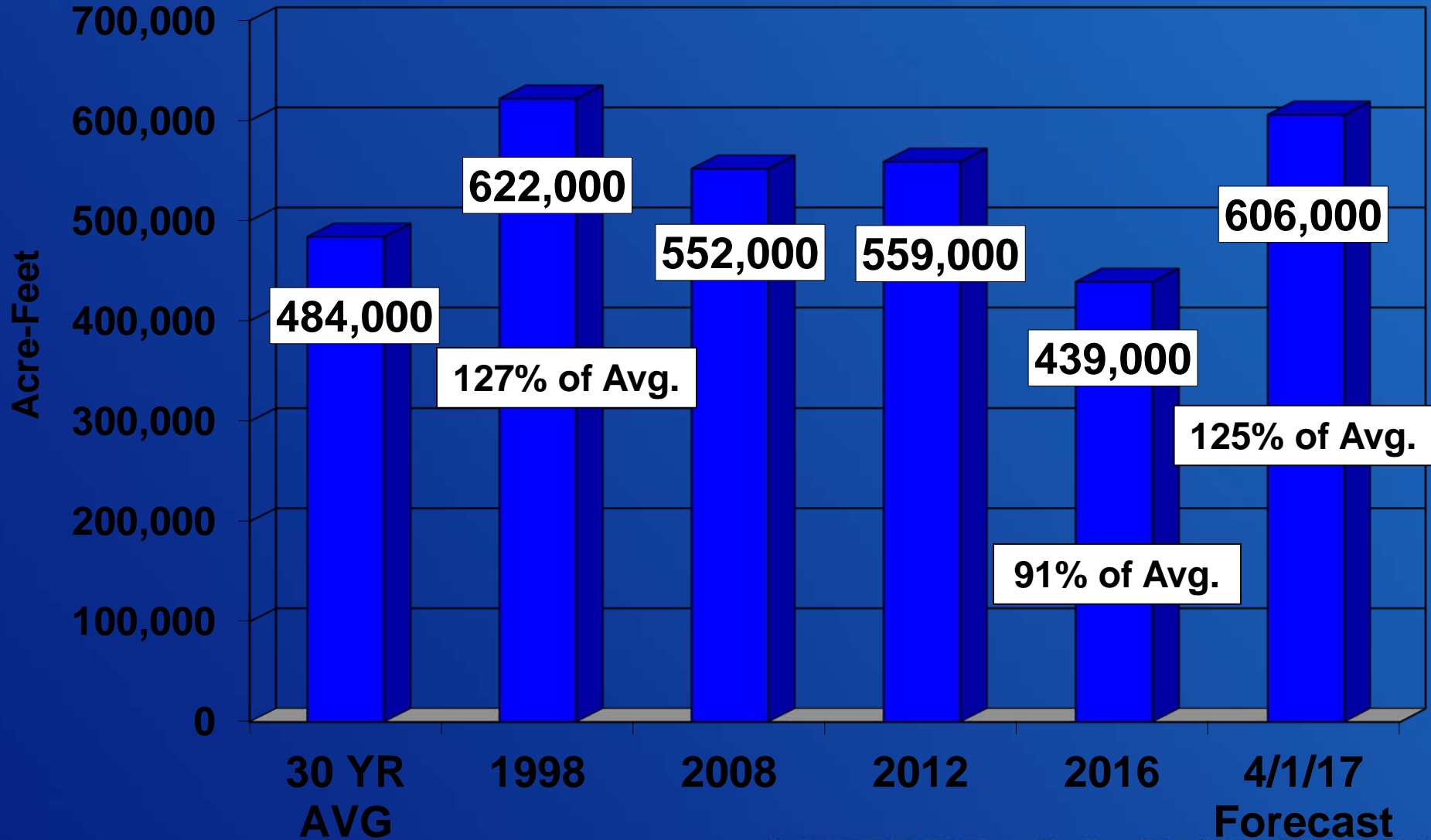
2017 2016 2012 2008 1998 30-yr Avg.



# RECLAMATION

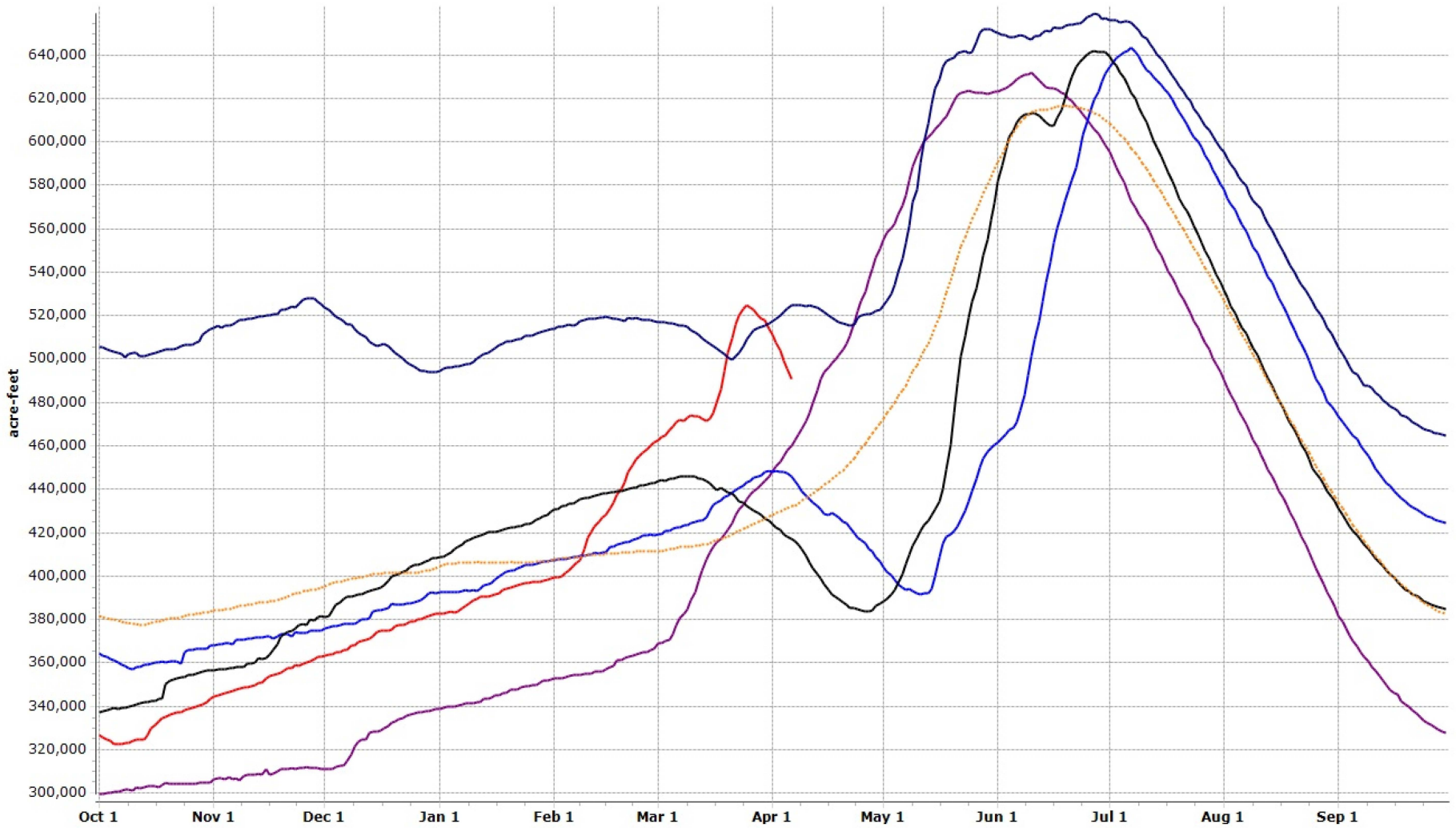
# Cascade Reservoir Inflows

## April 1 – July 31



# Cascade Reservoir Storage (capacity = 646,460 ac-ft)

2017 2016 2011 2008 1998 30-yr Avg.

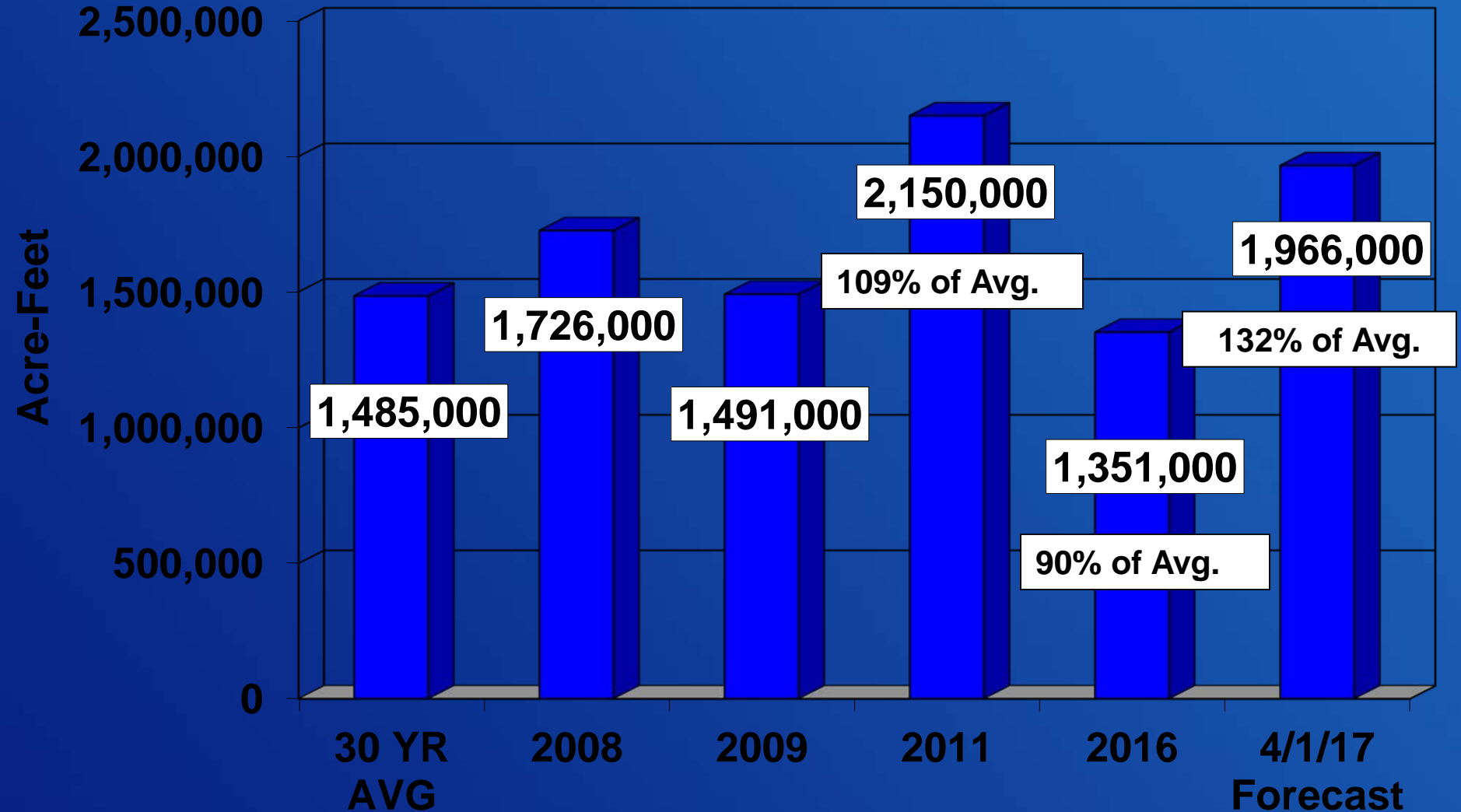


# Payette Basin



# Payette River Runoff at Horseshoe Bend

## April 1 – July 31



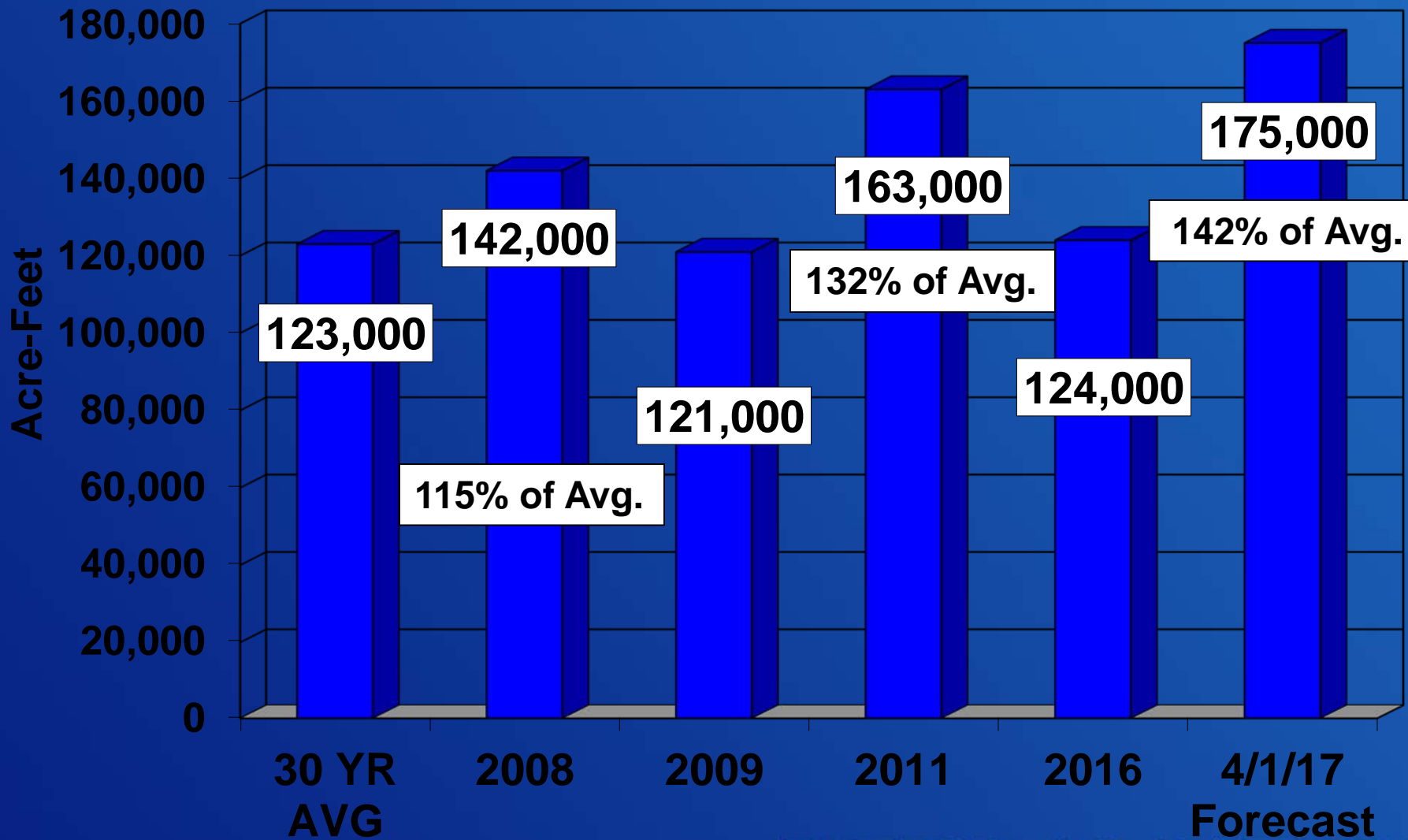
RECLAMATION





# Deadwood Reservoir Inflows

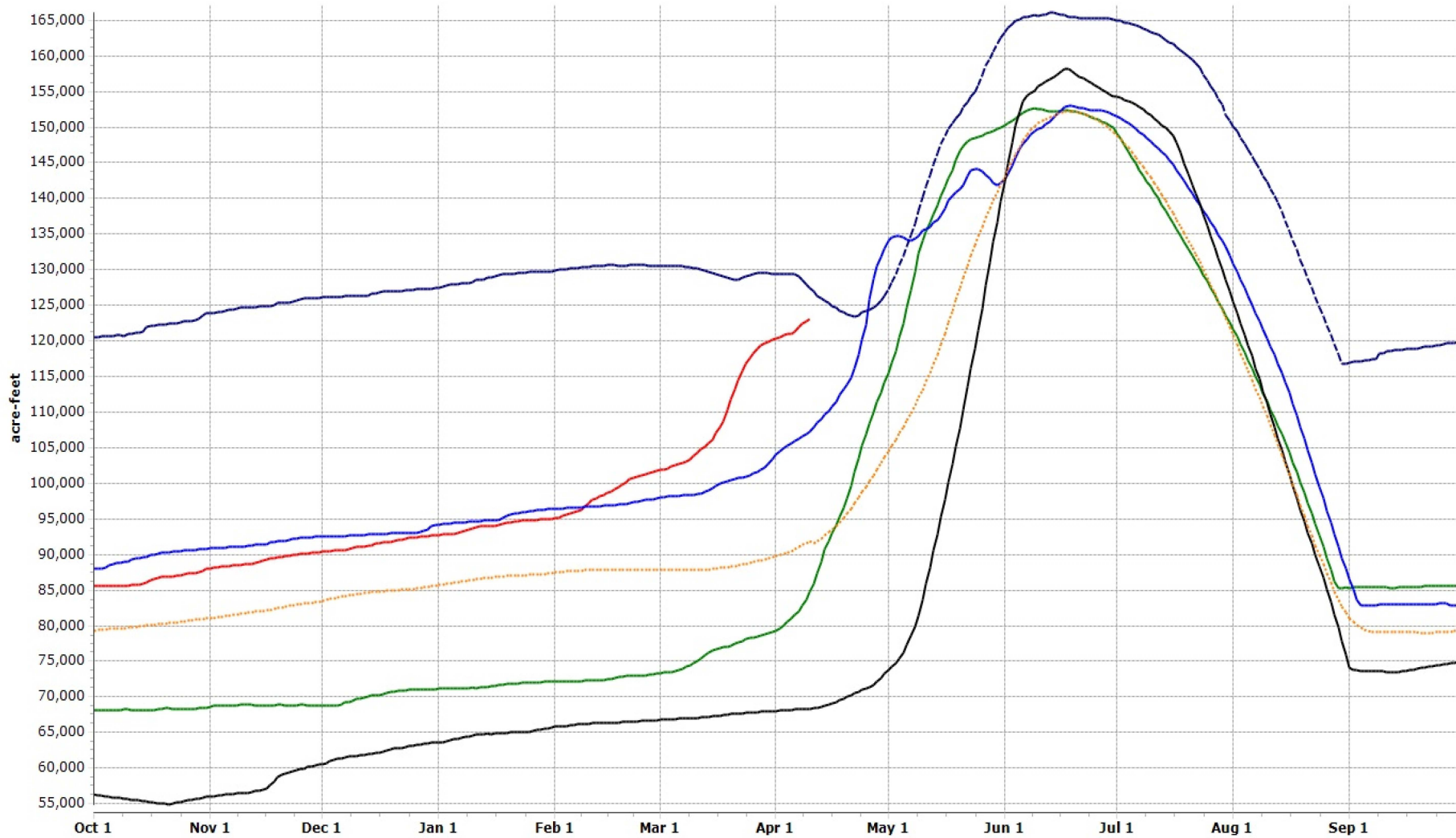
April 1 – July 31



RECLAMATION

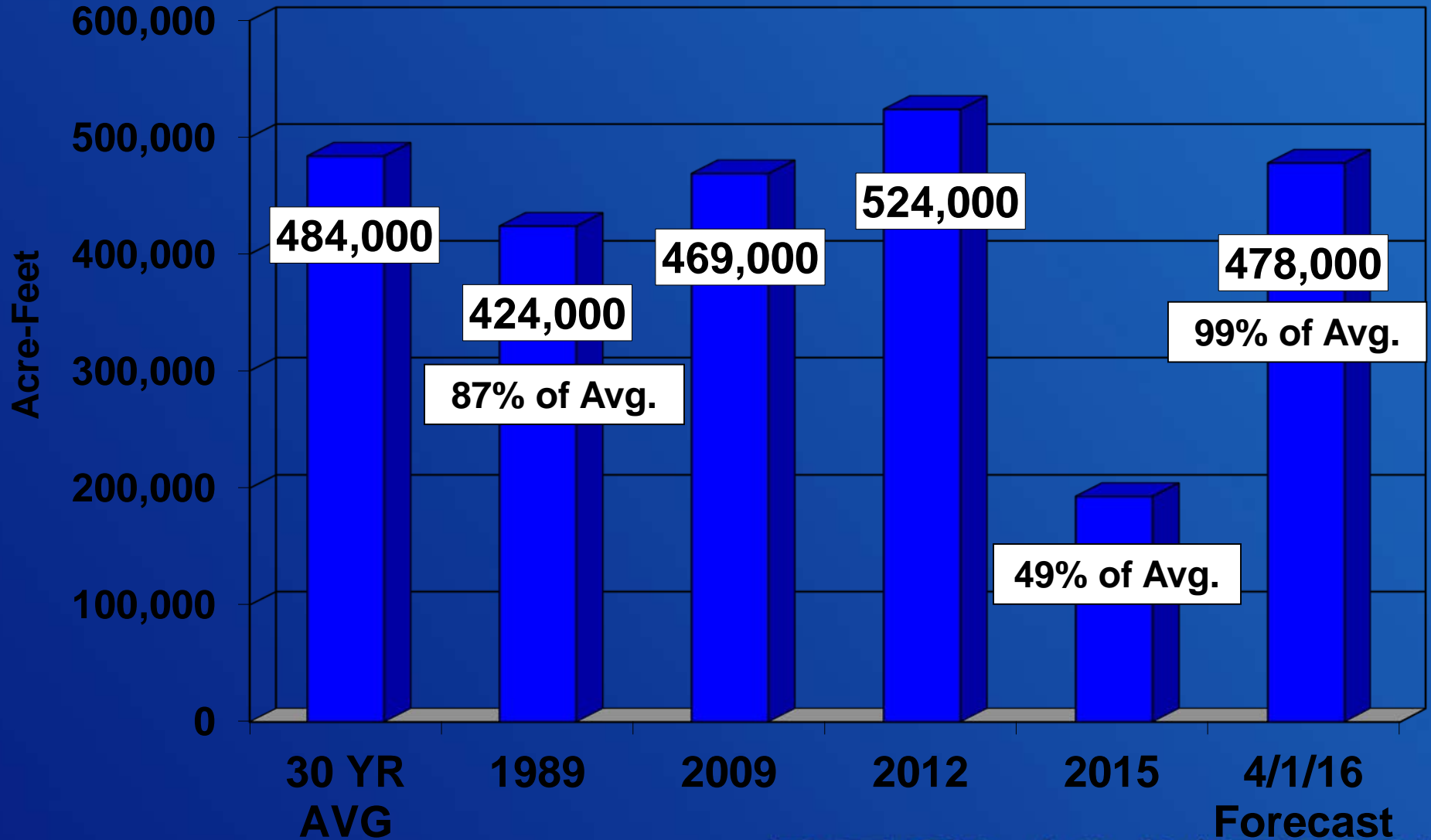
# Deadwood Reservoir Storage (capacity = 154,000 ac-ft)

2017 2016 2012 2008 1998 30-yr Avg.



# Cascade Reservoir Inflows

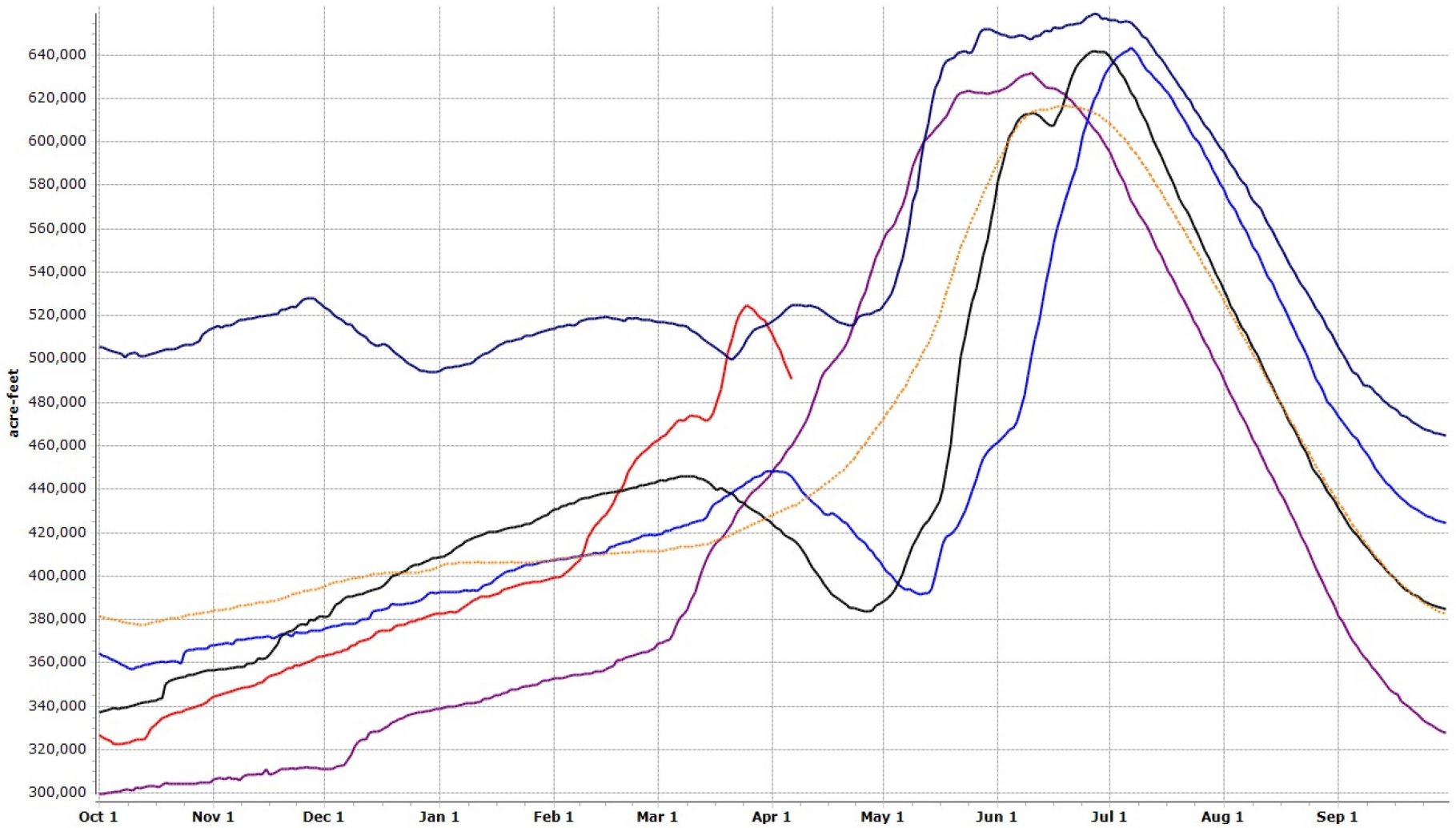
## April 1 – July 31



RECLAMATION

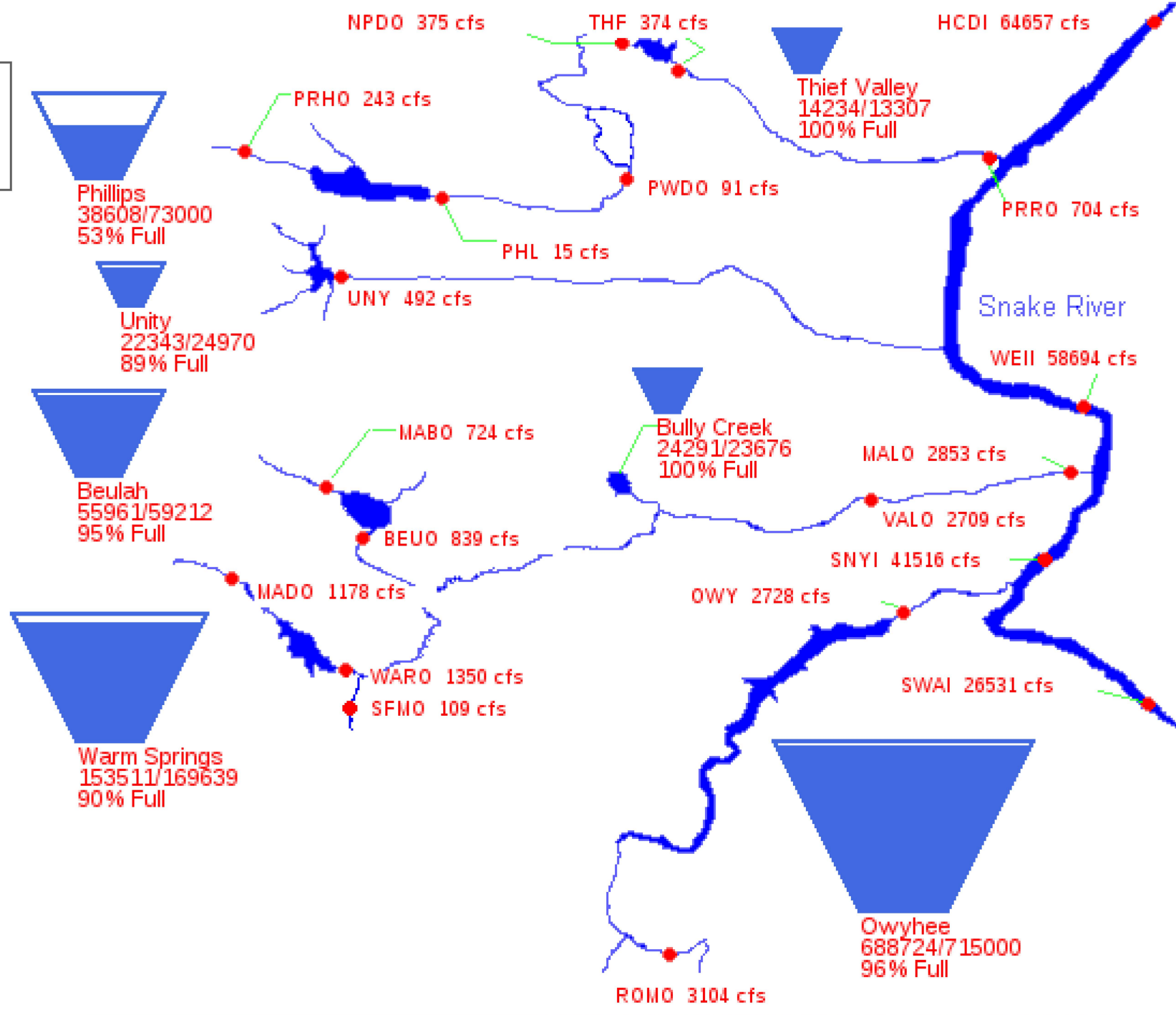
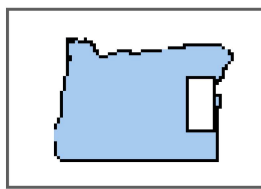
# Cascade Reservoir Storage (capacity = 646,460 ac-ft)

2017 2016 2011 2008 1998 30-yr Avg.



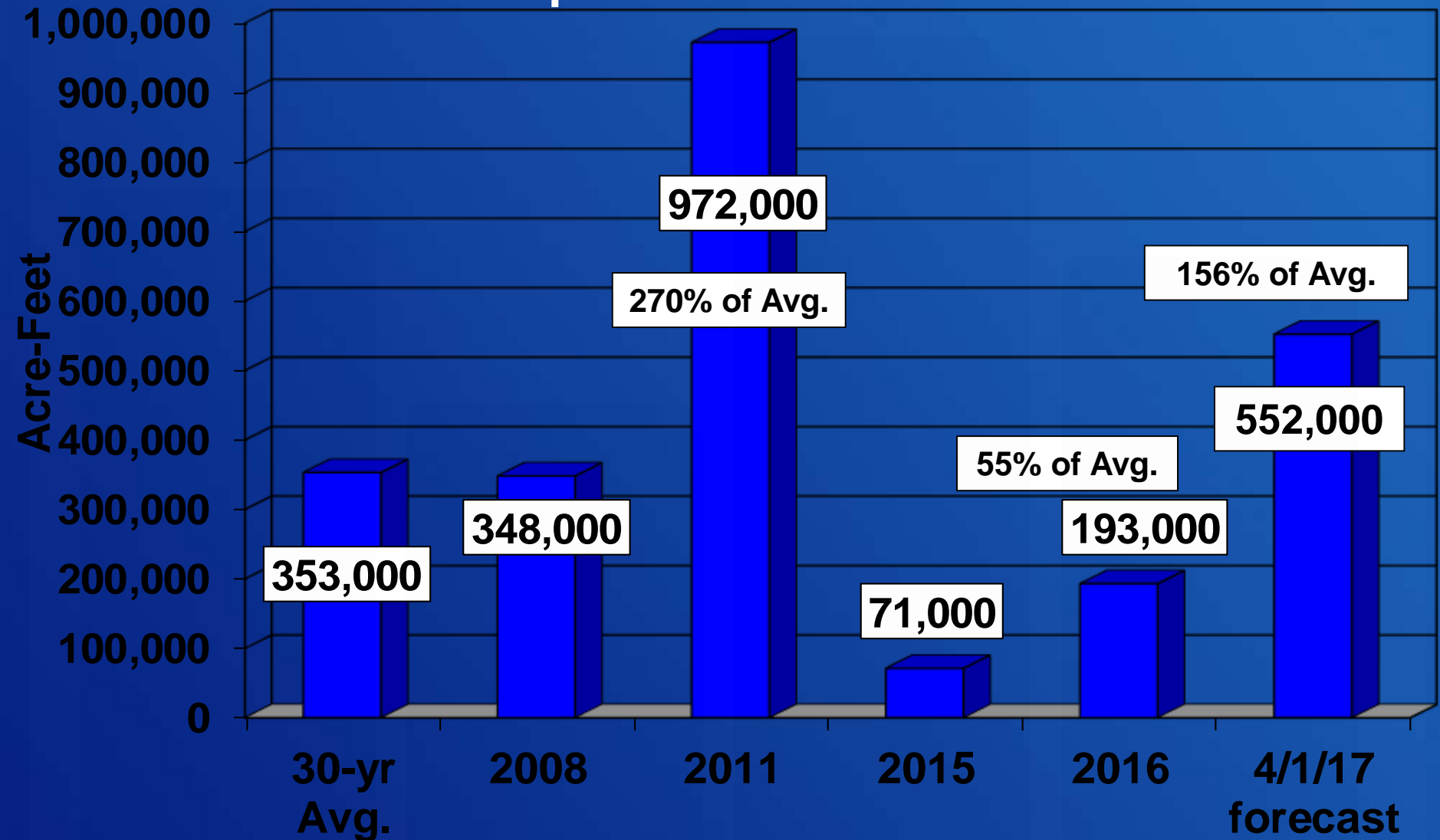


04/11/2017



# Owyhee Reservoir Inflows

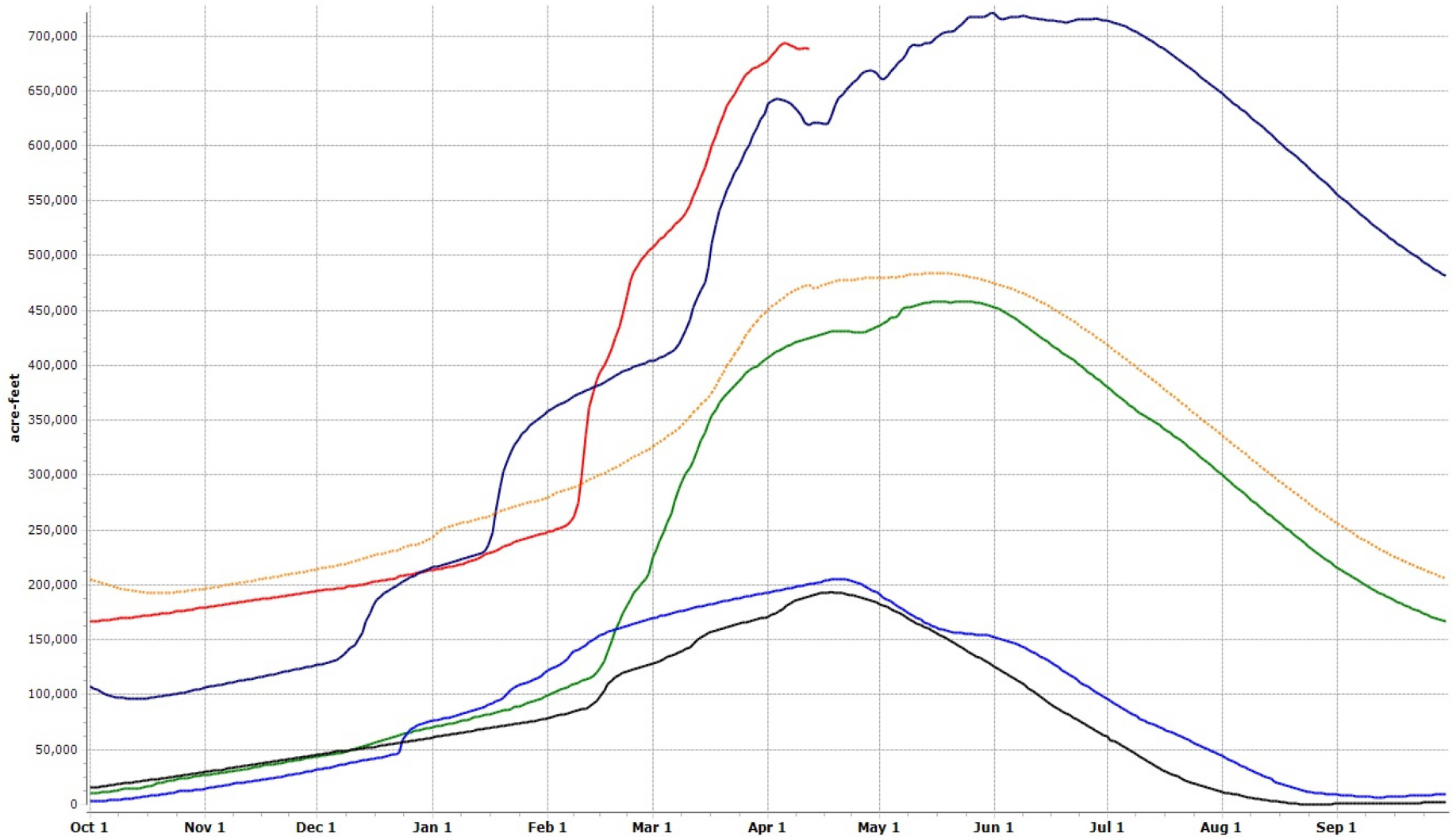
April 1 – June 30



RECLAMATION

### Owyhee Reservoir Storage (capacity = 715,000 ac-ft)

2017 2016 2015 2014 2011 30-yr avg.



# RECLAMATION





RECLAMATION