

RECLAMATION

Managing Water in the West

Idaho Water Supply Committee Meeting

Southwest Idaho Report

April 12, 2016



U.S. Department of the Interior
Bureau of Reclamation

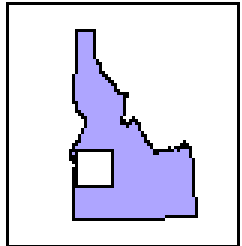
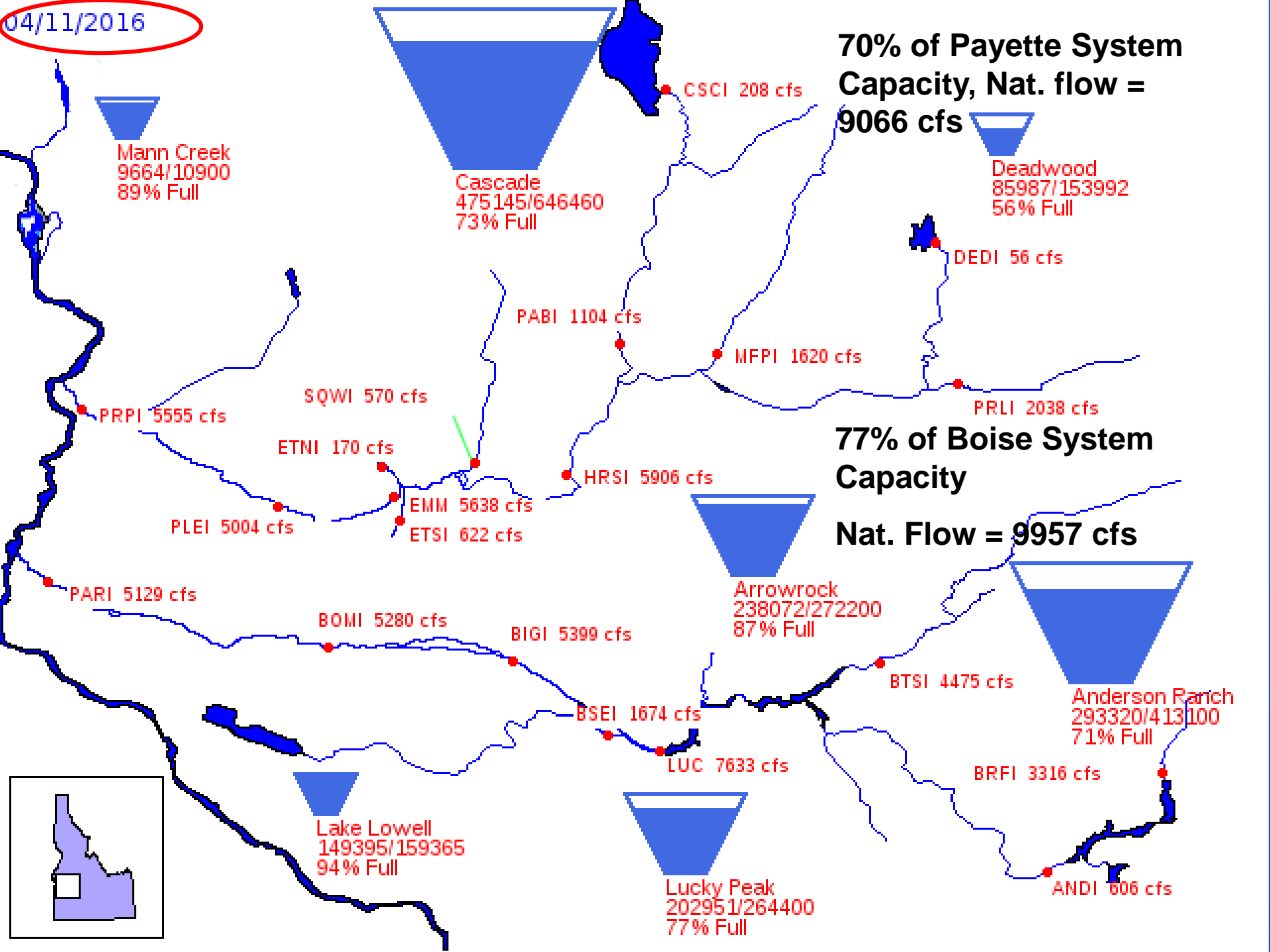




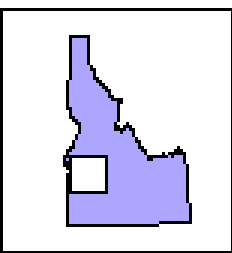
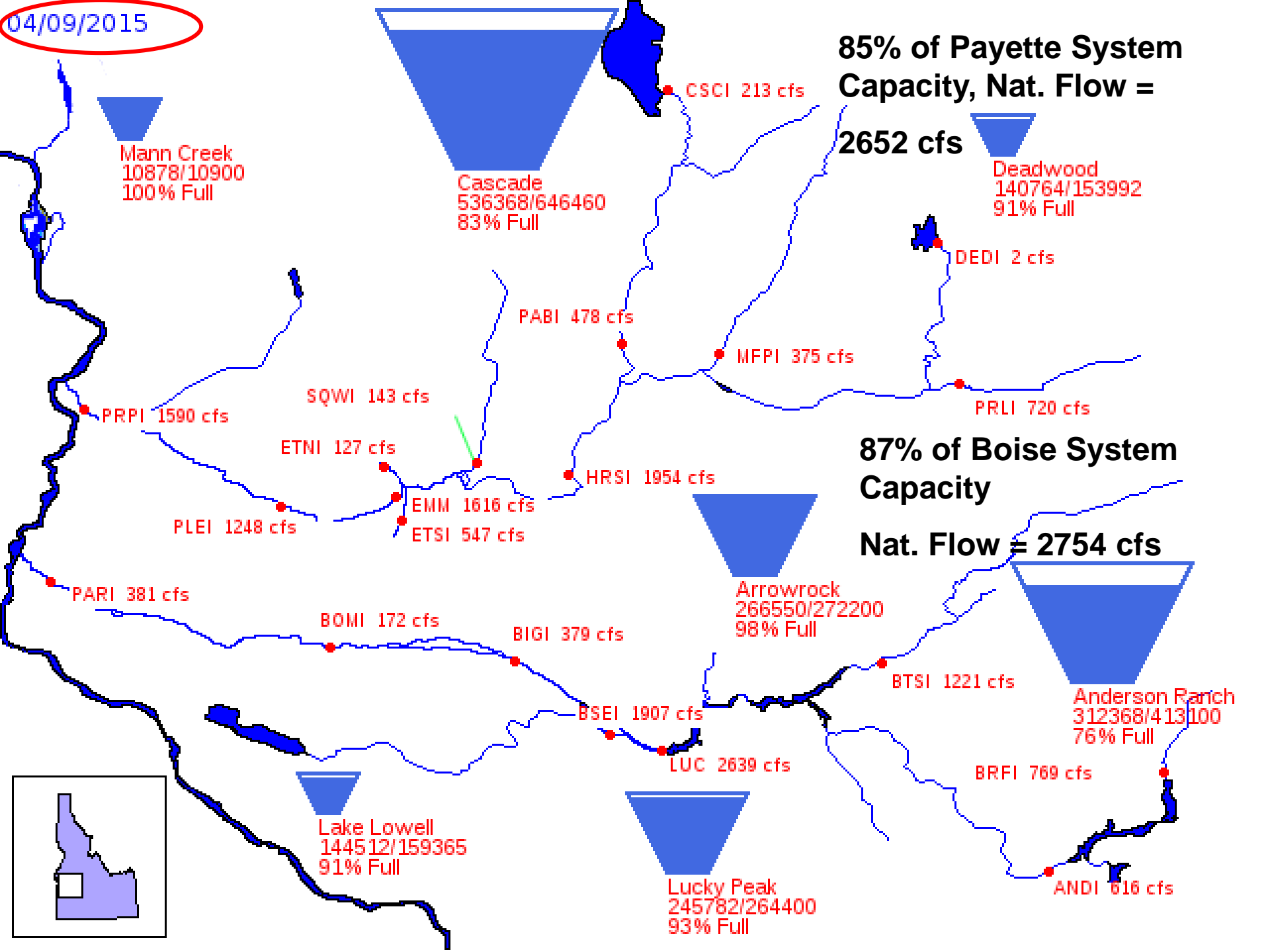
South Boise Mutual Diversion Dam
@ approx. 6500 cfs, April, 2011

RECLAMATION

04/11/2016

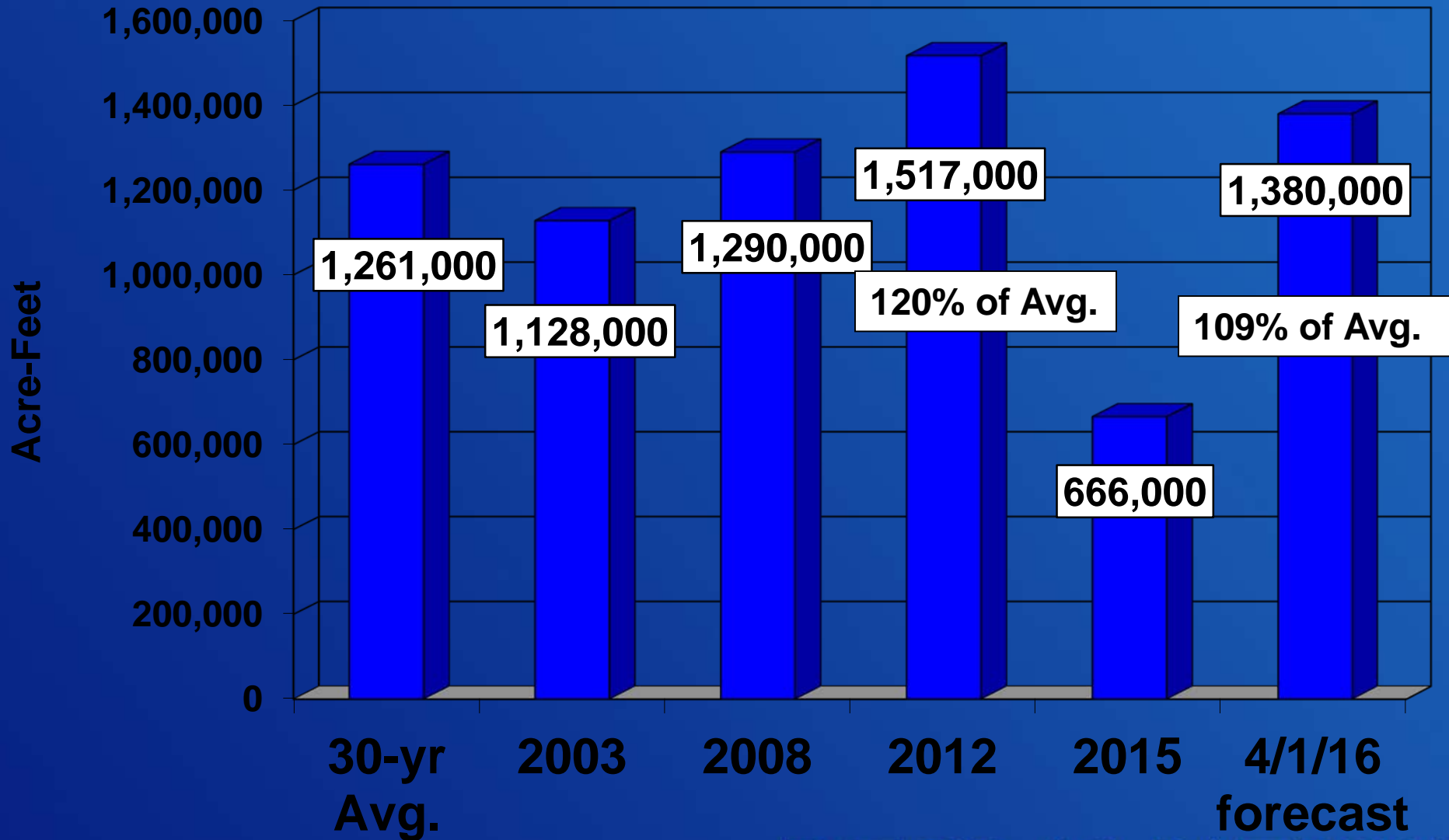


04/09/2015



Boise Basin Runoff

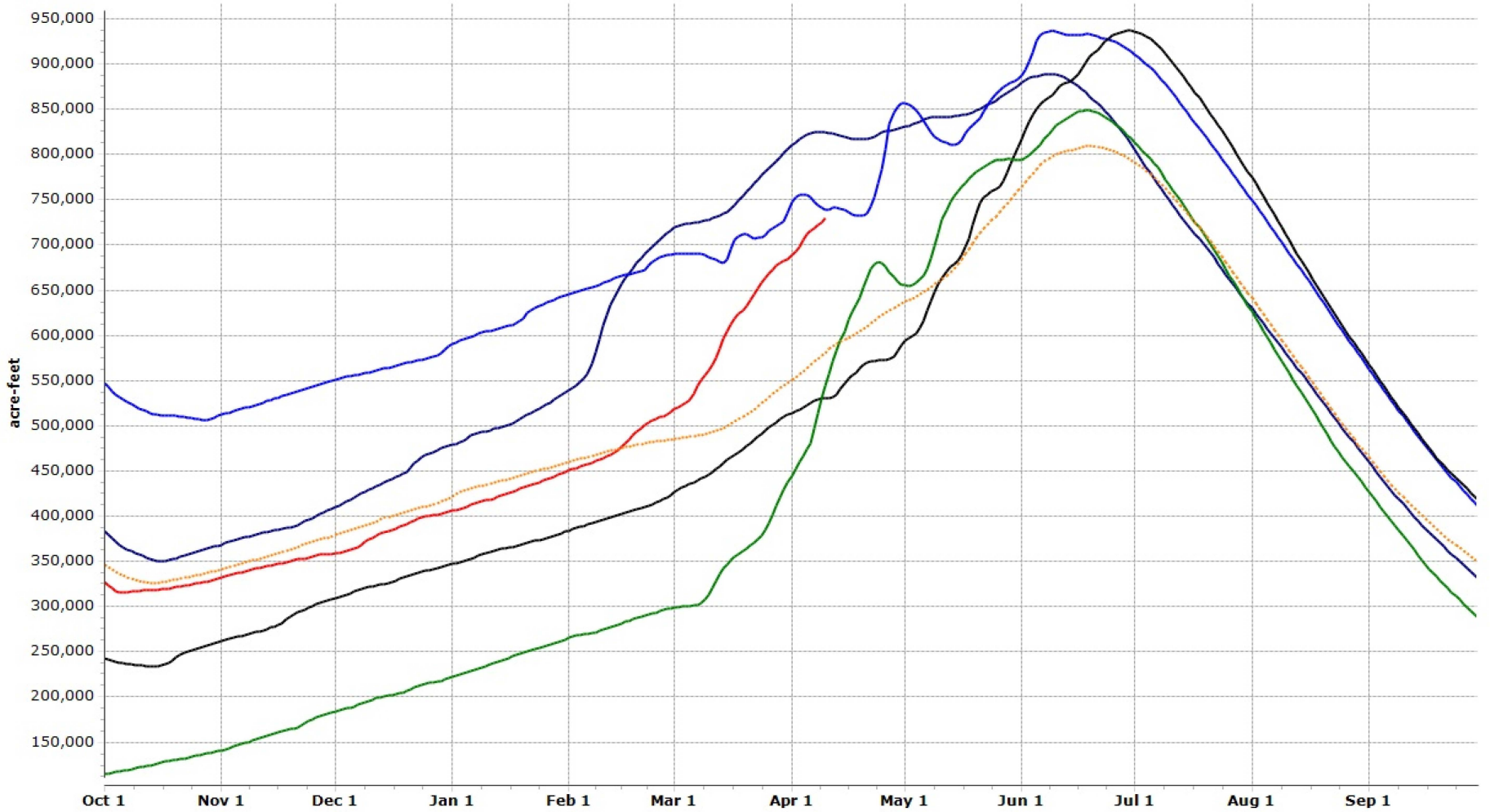
April 1 – July 31



RECLAMATION

Boise River Reservoir Storage (capacity = 949,900 ac-ft)

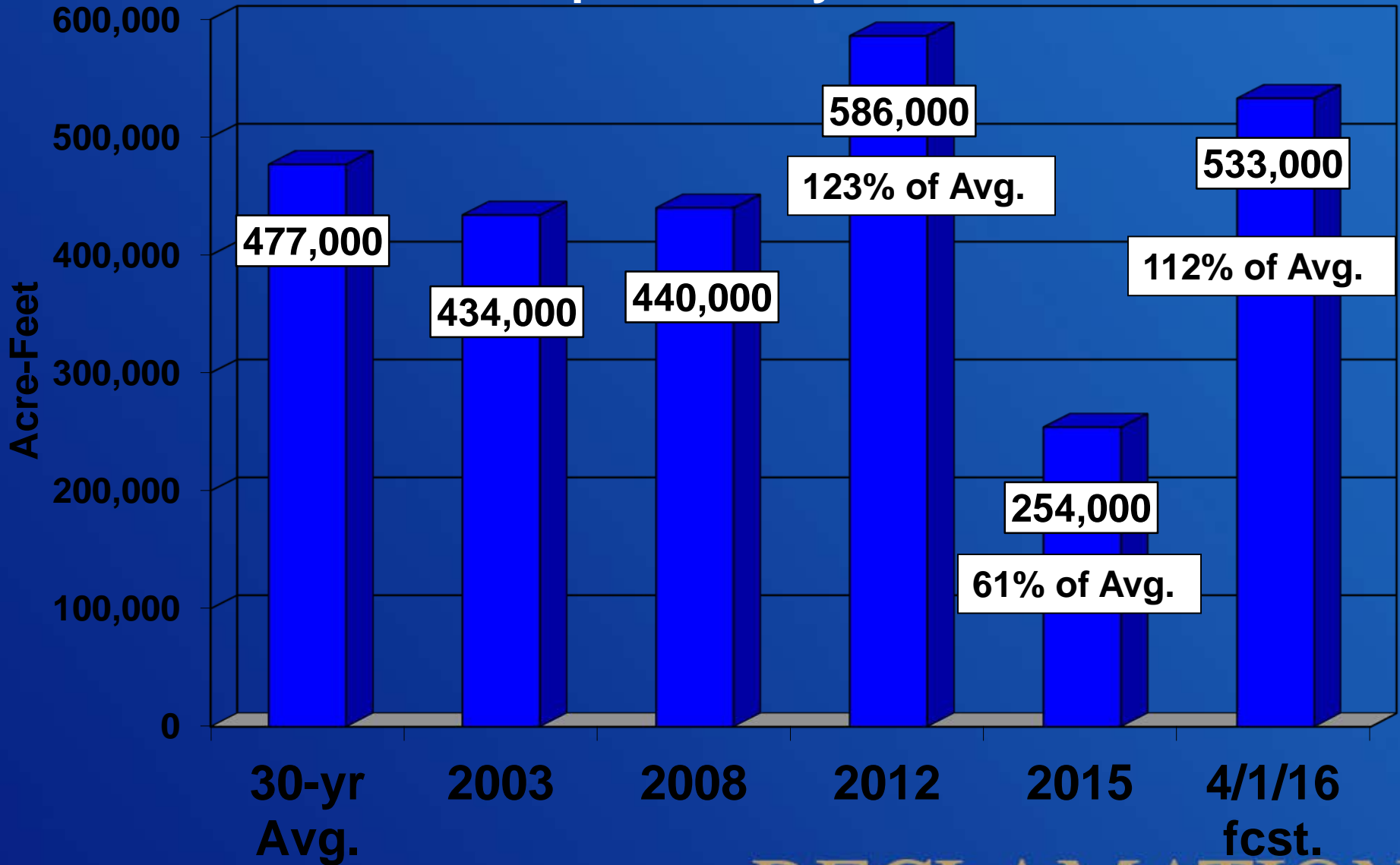
2016 2015 2012 2008 1989 30-yr. Avg.



RECLAMATION

Anderson Ranch Reservoir Inflows

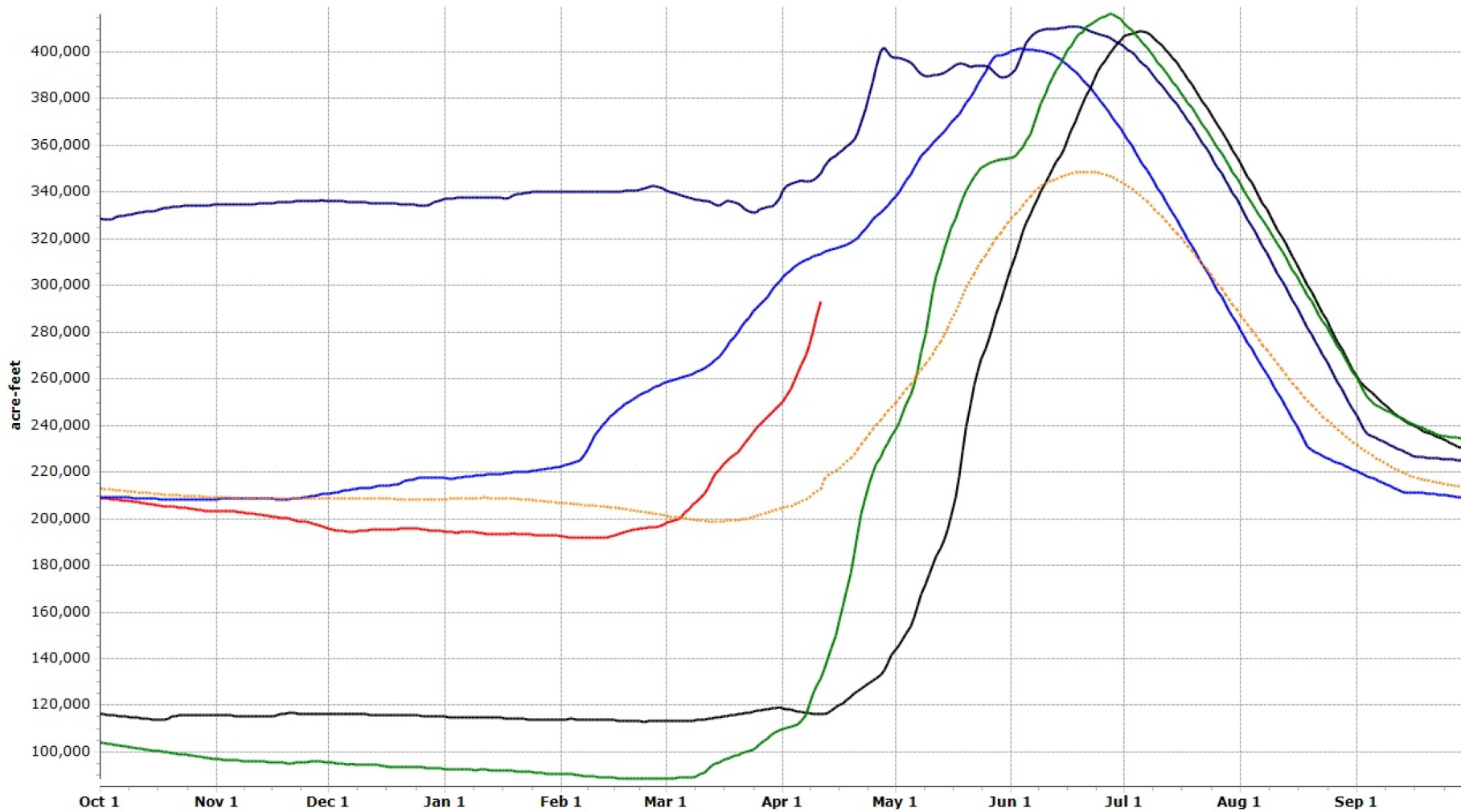
April 1 – July 31



RECLAMATION

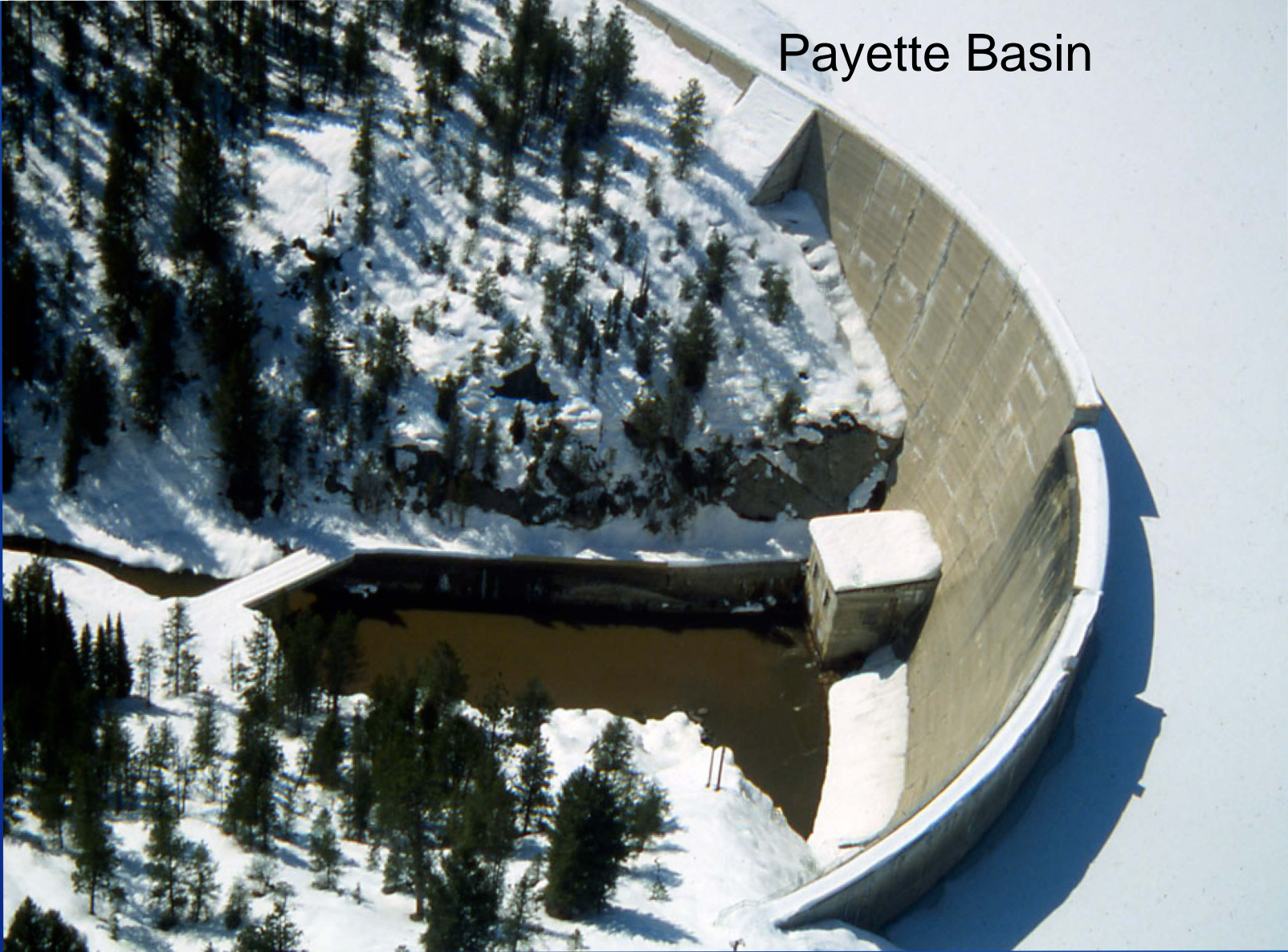
Anderson Ranch Reservoir Storage (capacity = 413,100 ac-ft)

2016 2015 2012 2008 1989 30-yr Avg.



RECLAMATION

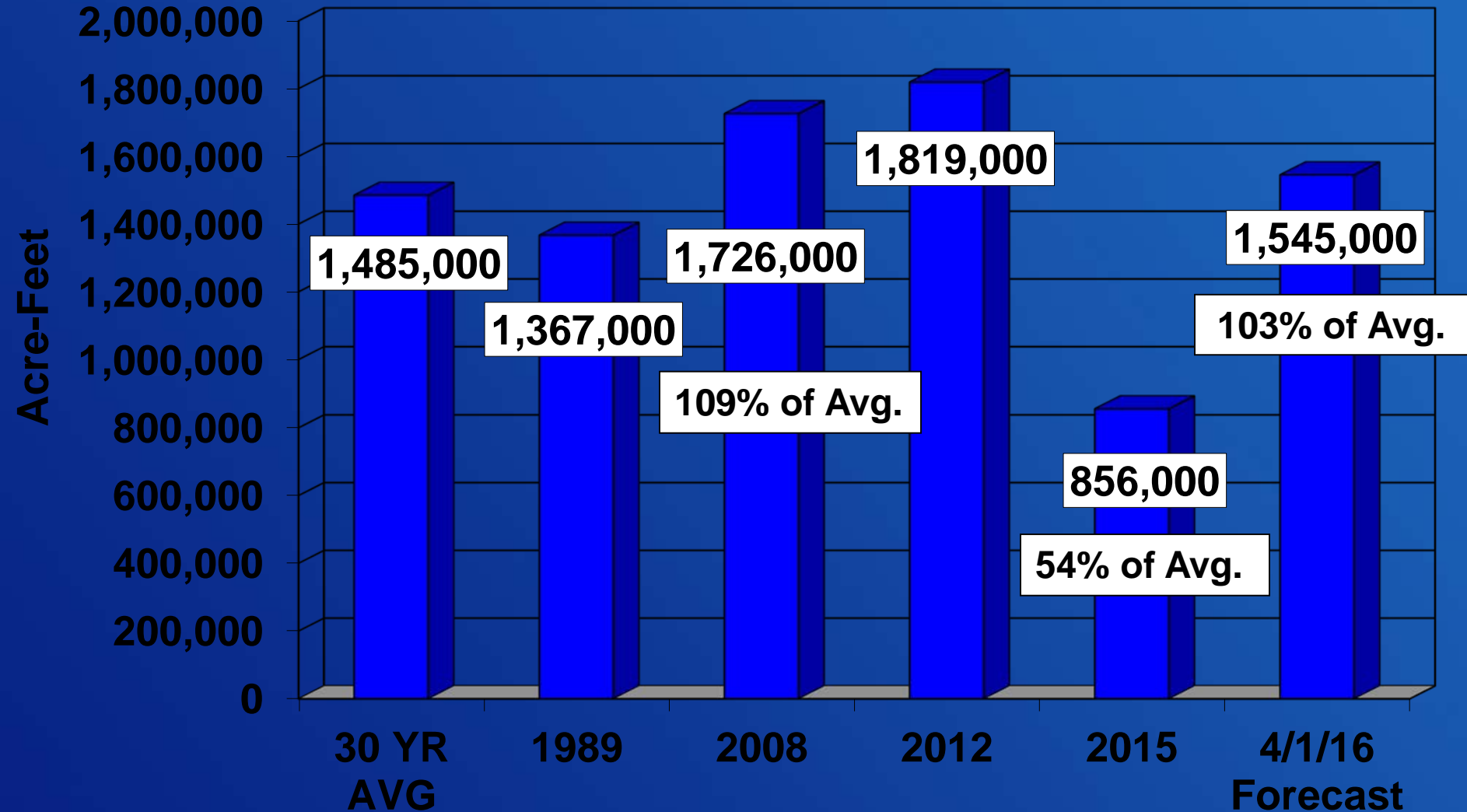
Payette Basin



RECLAMATION

Payette River Runoff at Horseshoe Bend

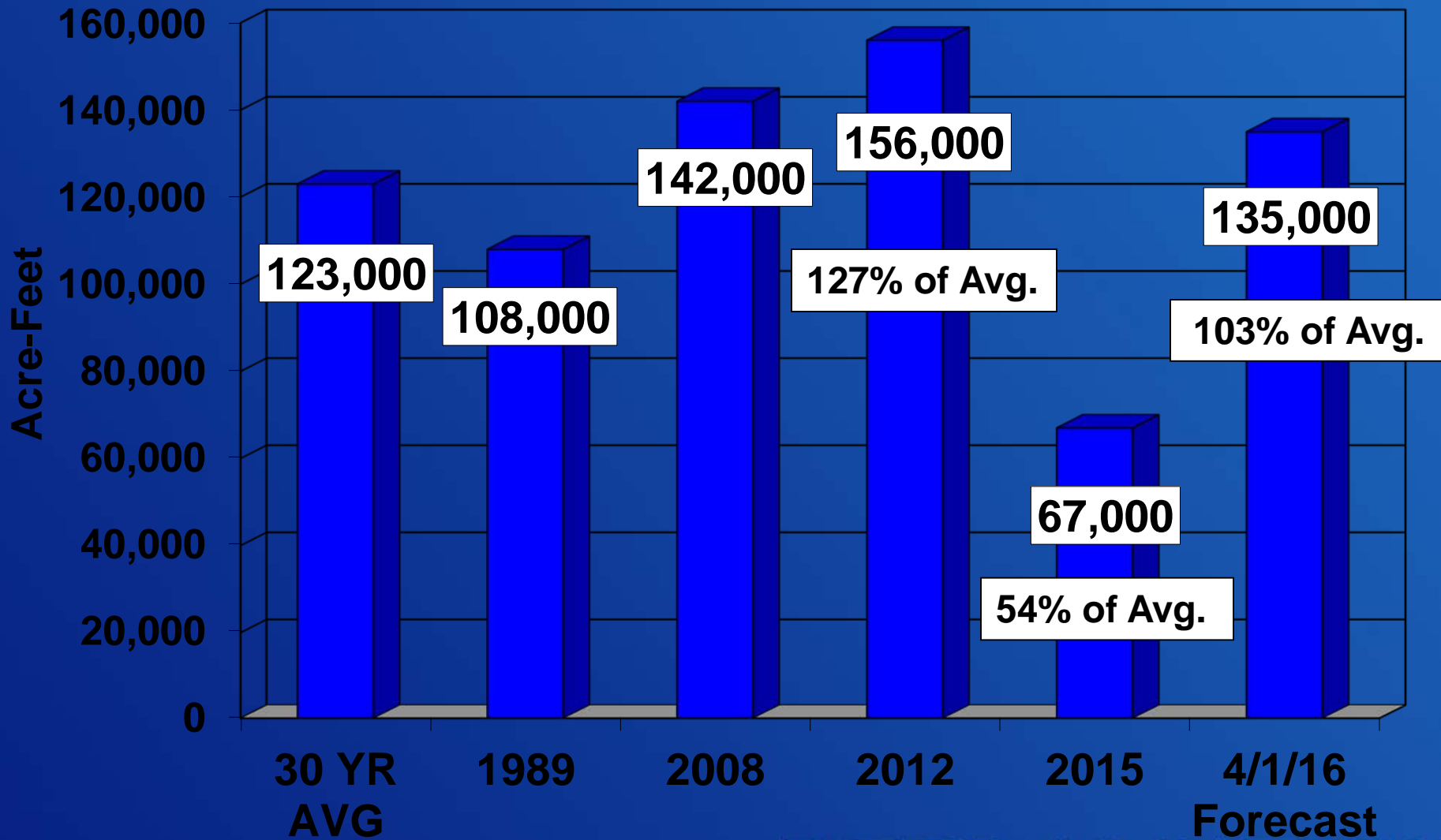
April 1 – July 31



RECLAMATION

Deadwood Reservoir Inflows

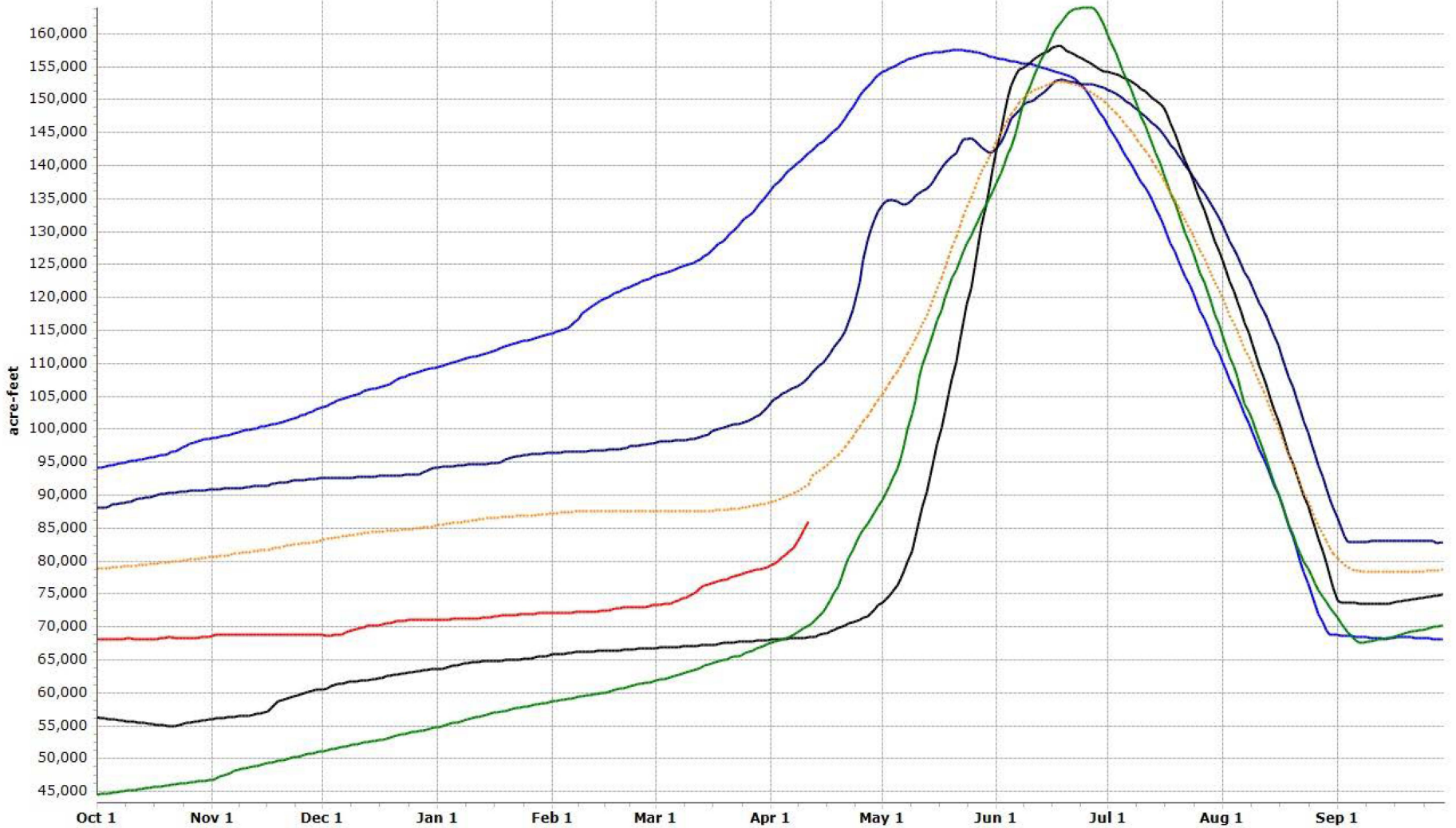
April 1 – July 31



RECLAMATION

Deadwood Reservoir Storage (capacity = 154,000 ac-ft)

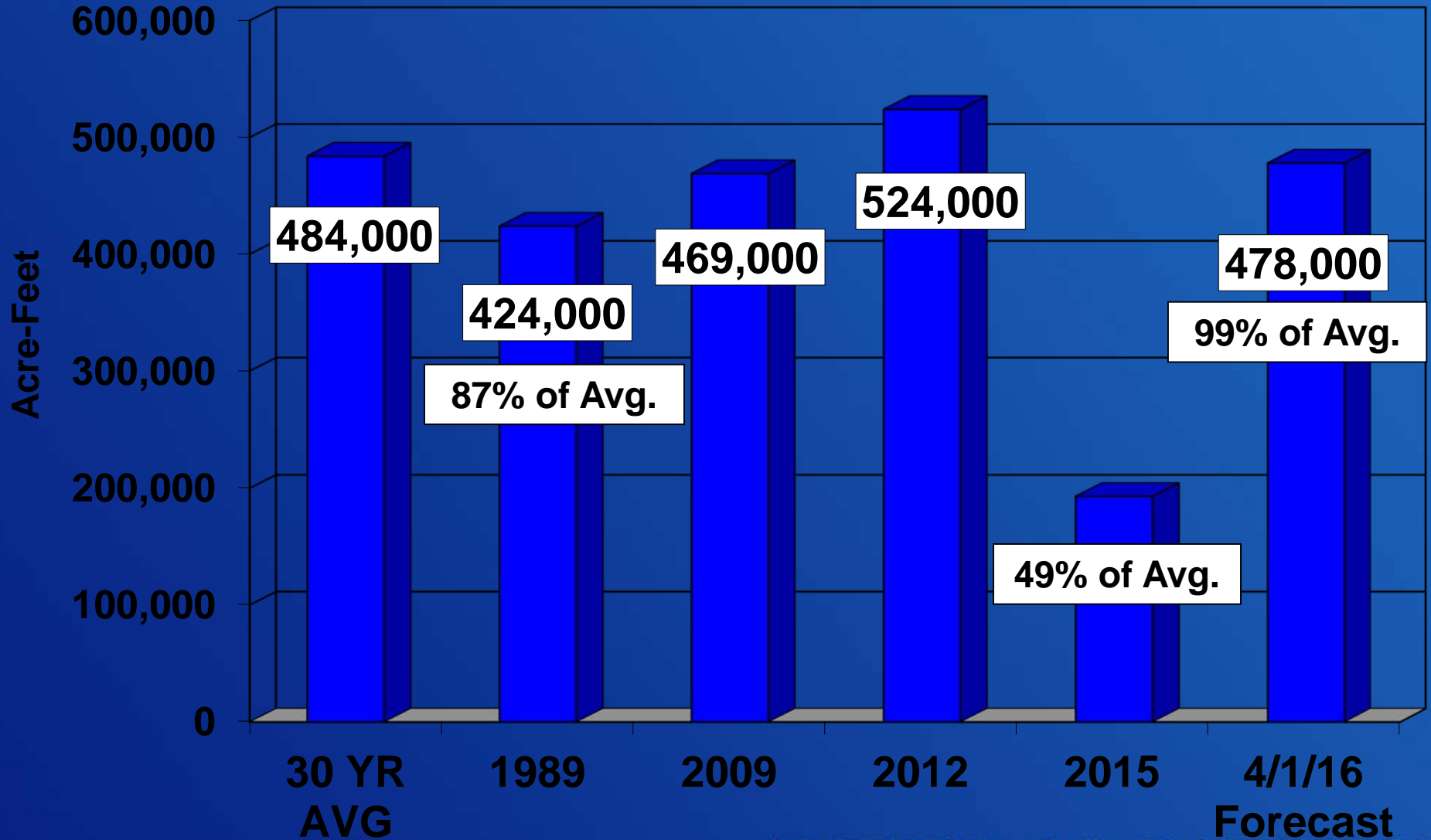
2016 2015 2012 2008 1989 30-yr Avg.



RECLAMATION

Cascade Reservoir Inflows

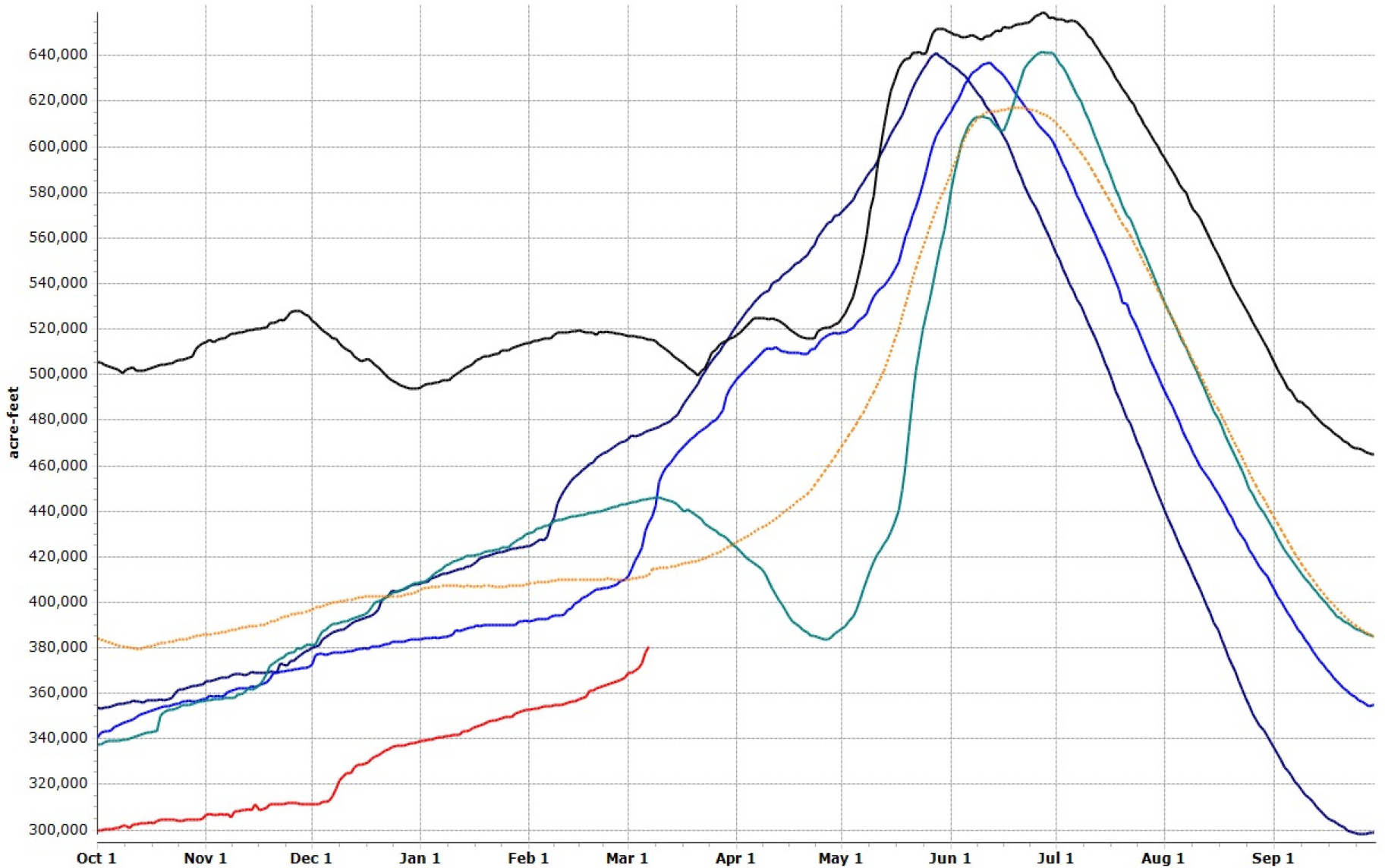
April 1 – July 31



RECLAMATION

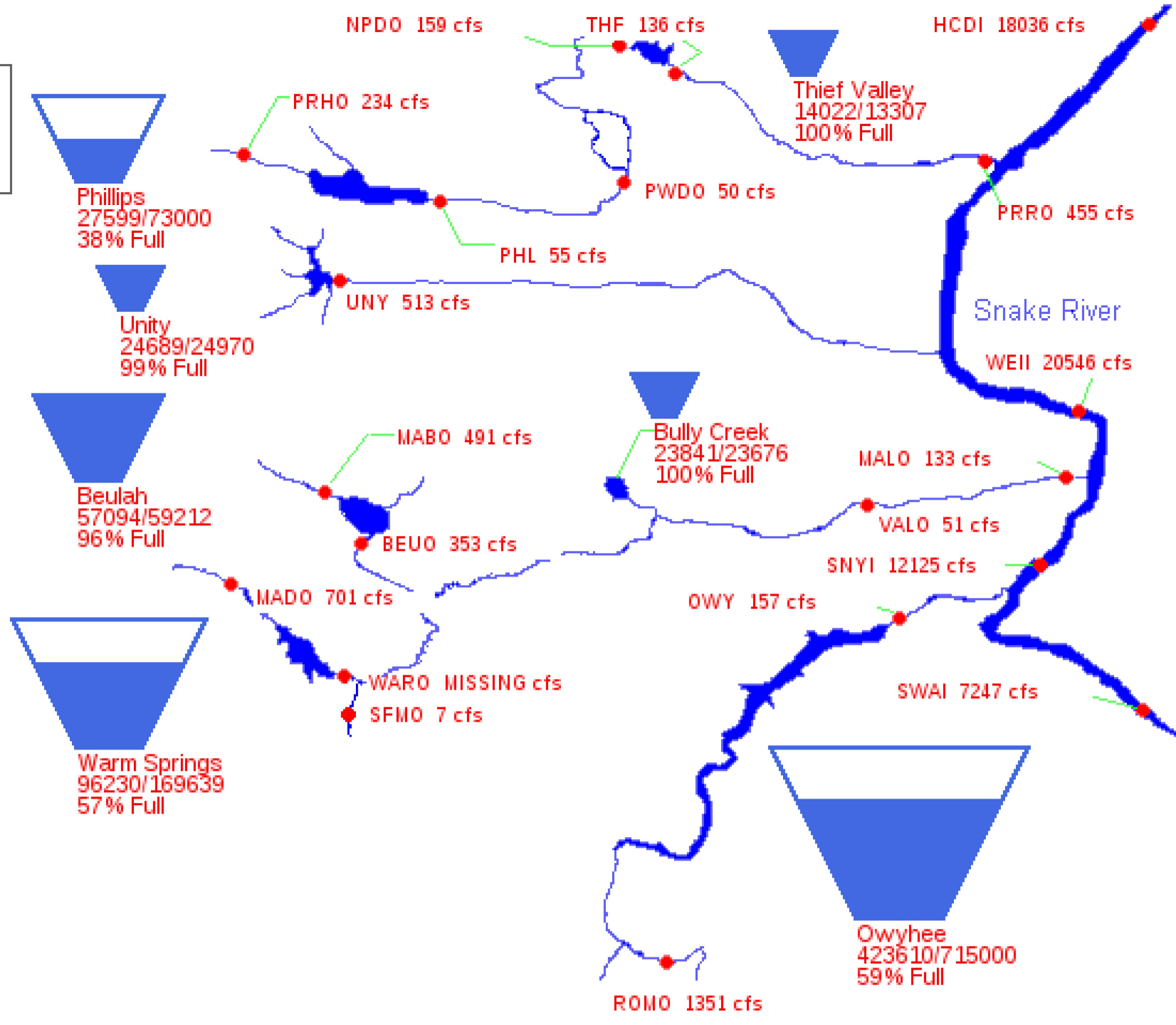
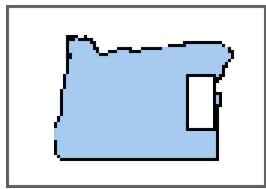
Cascade Reservoir Storage (capacity = 646,460 ac-ft)

2016 2015 2014 2008 1998 30-yr Avg.



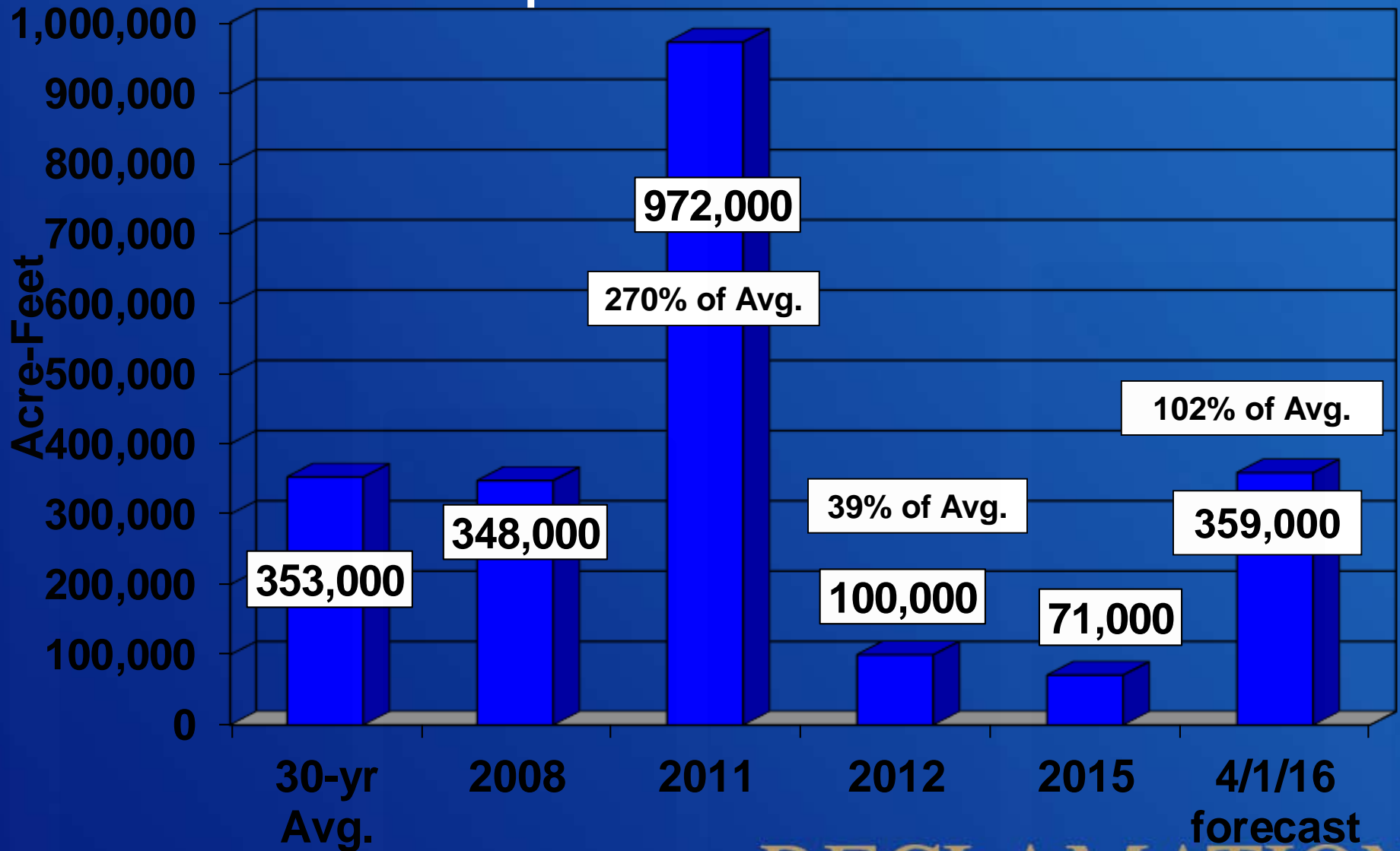


04/11/2016



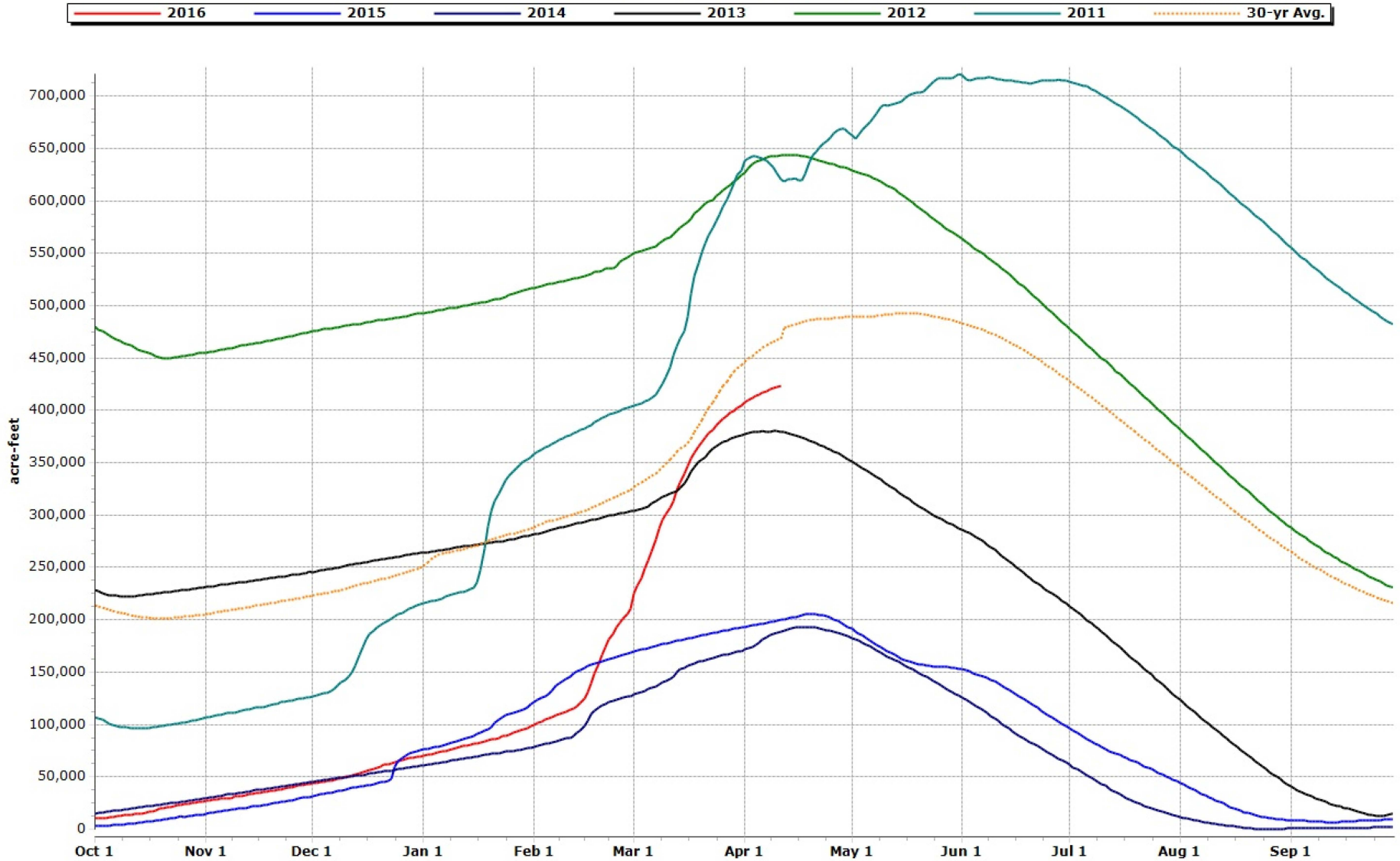
Owyhee Reservoir Inflows

April 1 – June 30



RECLAMATION

Owyhee Reservoir Storage (capacity = 715,000 ac-ft)



RECLAMATION



RECLAMATION