



March Water Supply Committee

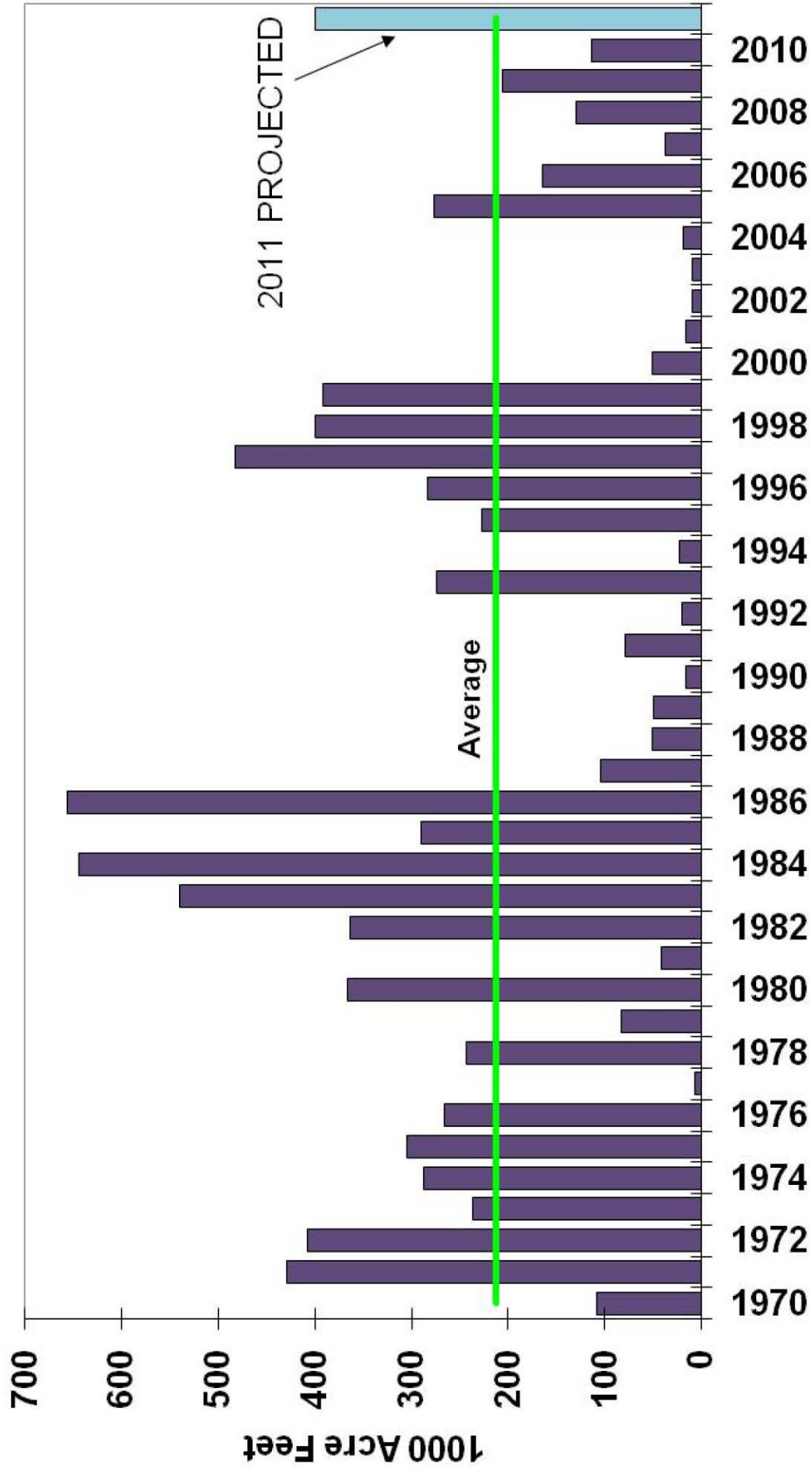
Presented by Liz Cresto

March 10, 2011



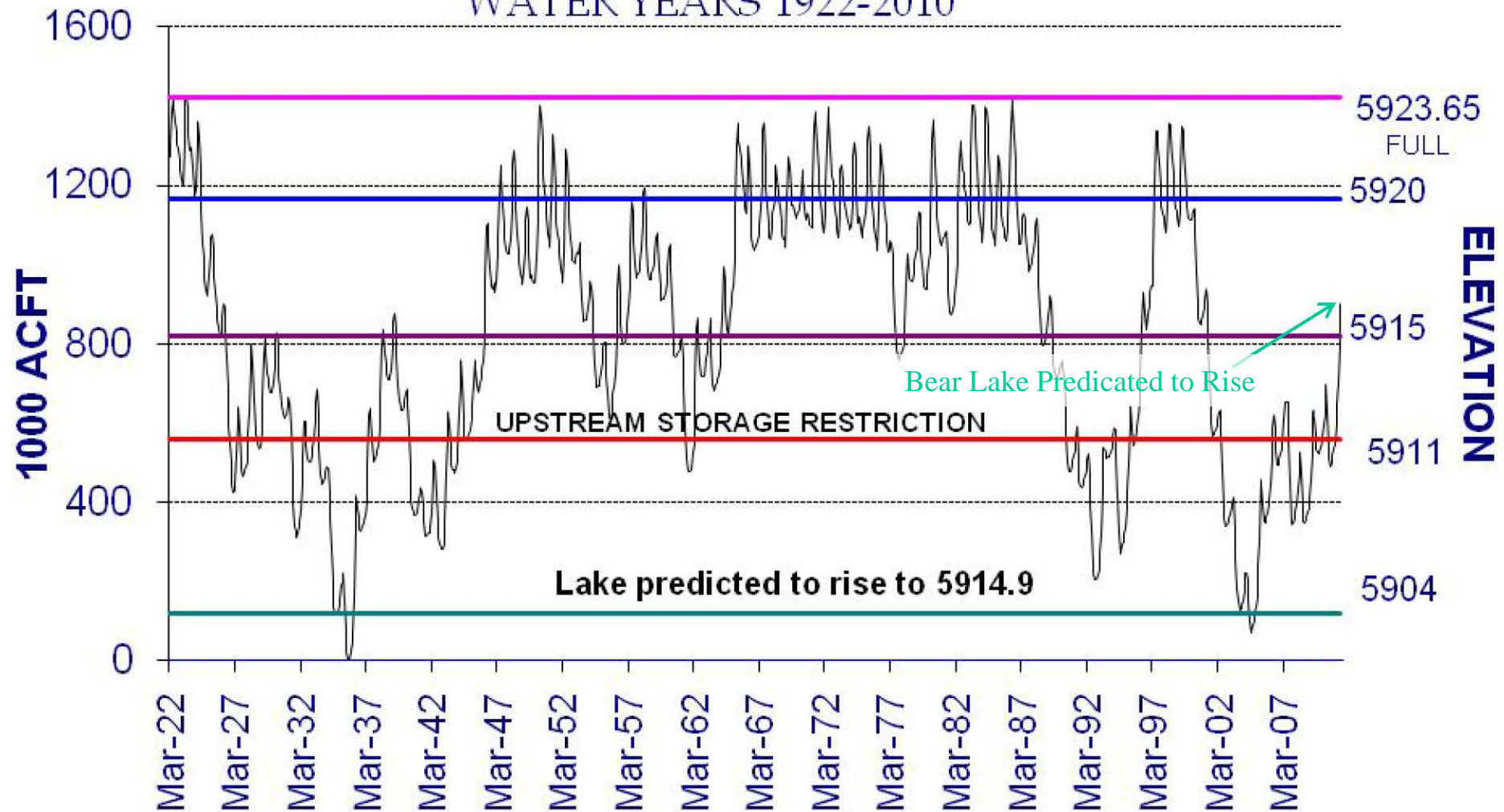
Bear Lake Inflow

**APRIL THROUGH SEPTEMBER
RAINBOW INLET CANAL VOLUME**



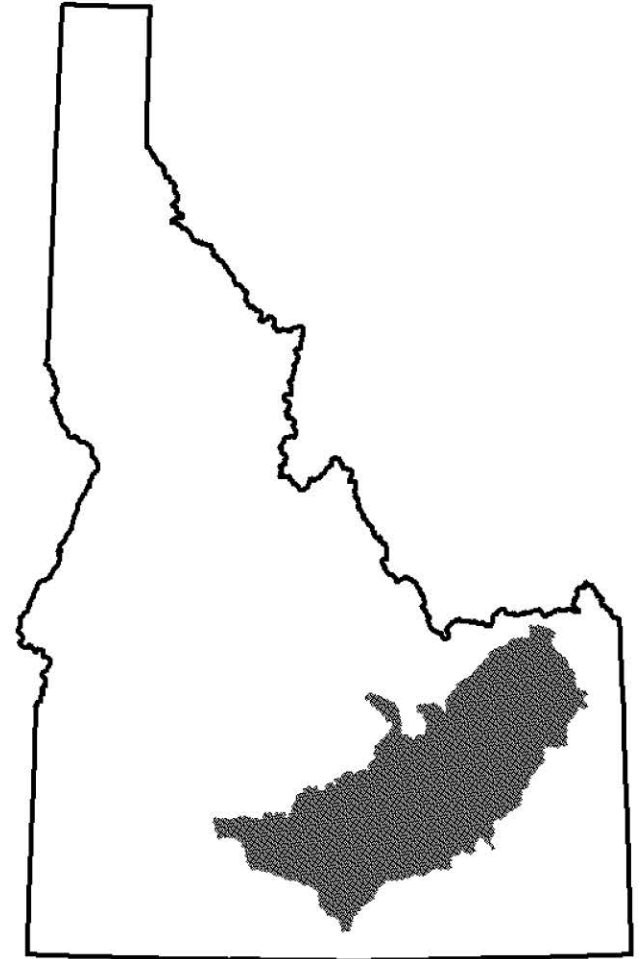
BEAR LAKE END OF MONTH STORAGE

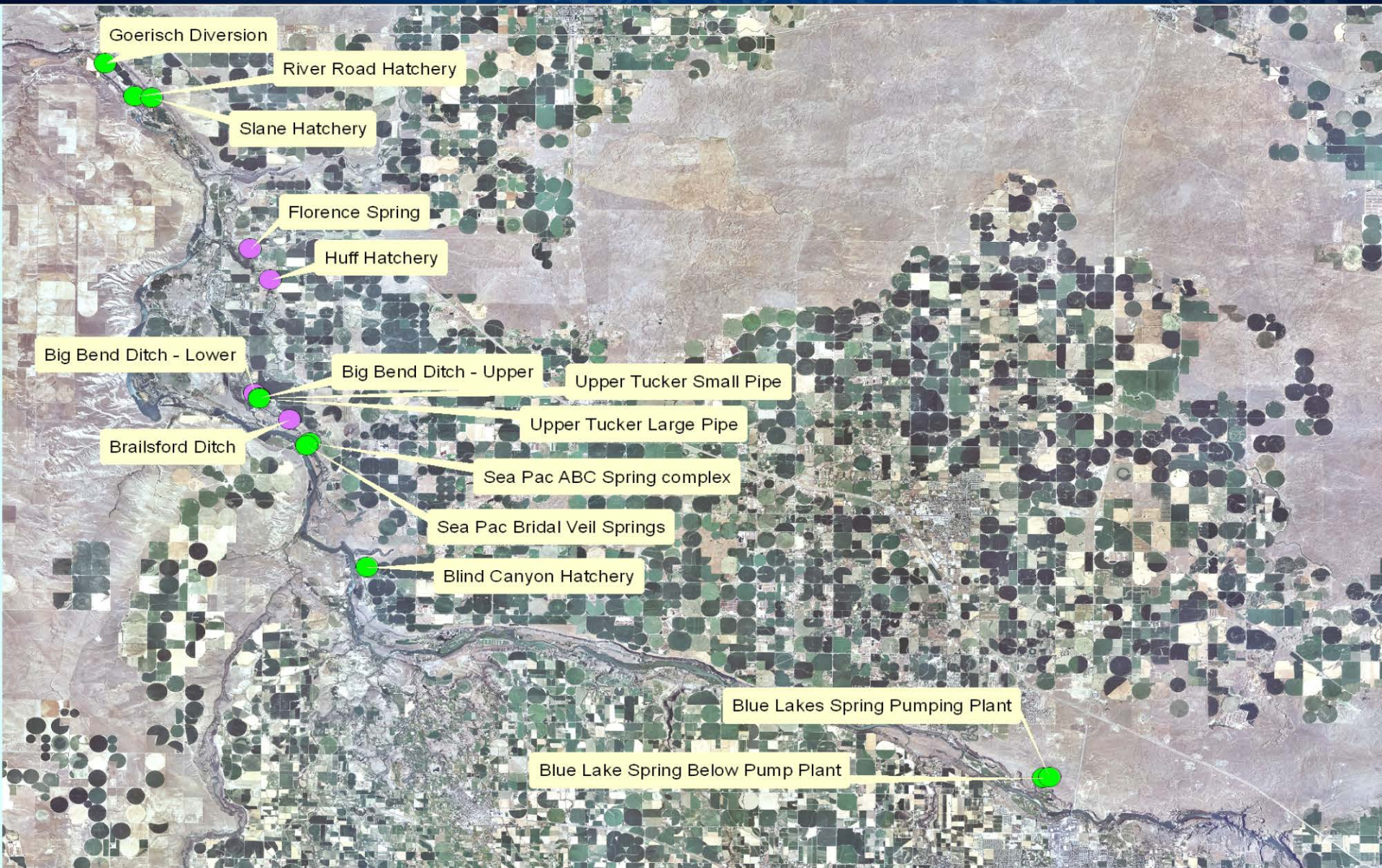
WATER YEARS 1922-2010

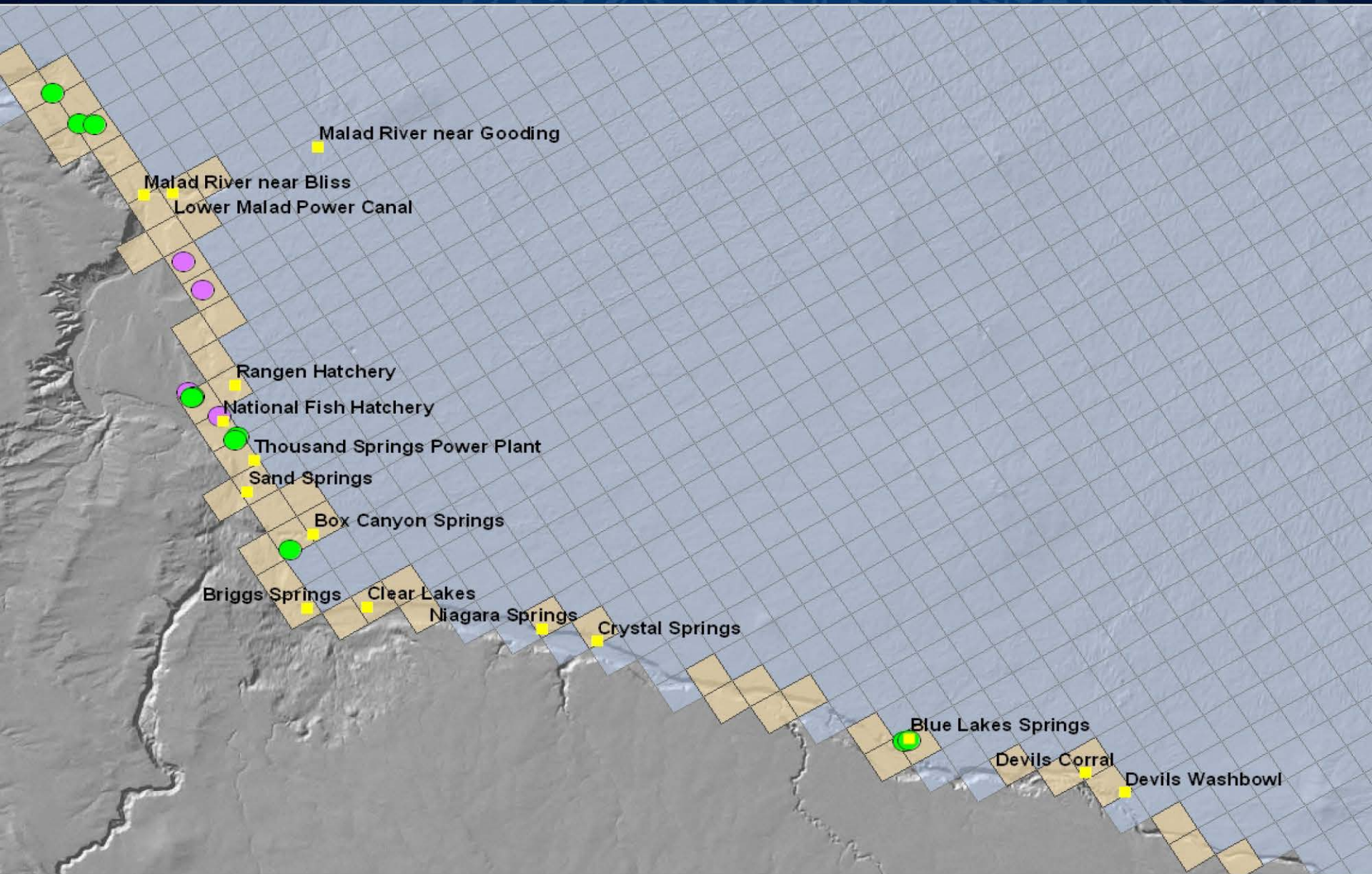


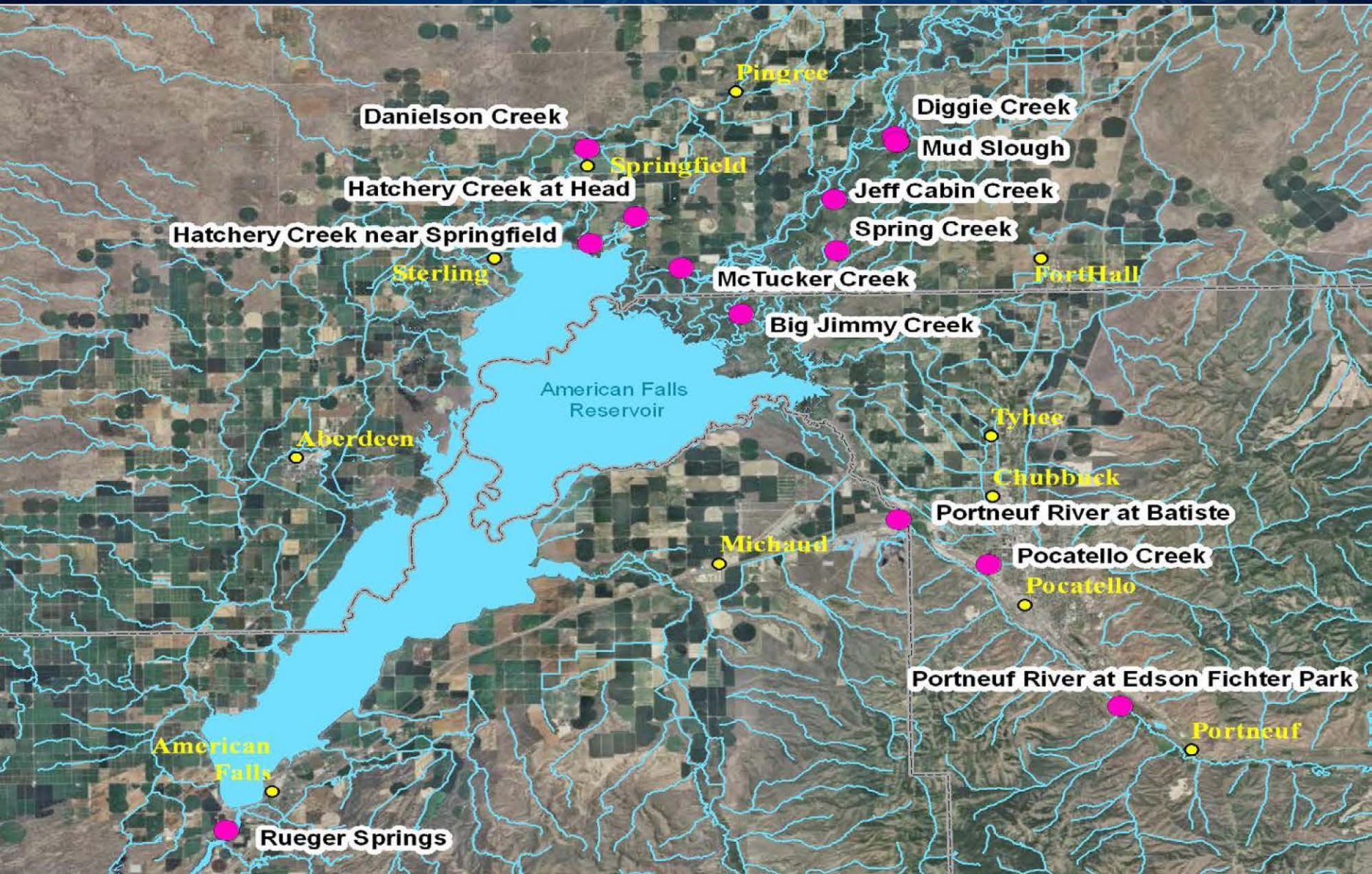
ESPA MONITORING

- Irrigation return flows
- Spring and creek flows
- Hatchery discharges
- River flows
 - Snake River
 - Portneuf River
- Irrigation diversions
- Ground water level measurements



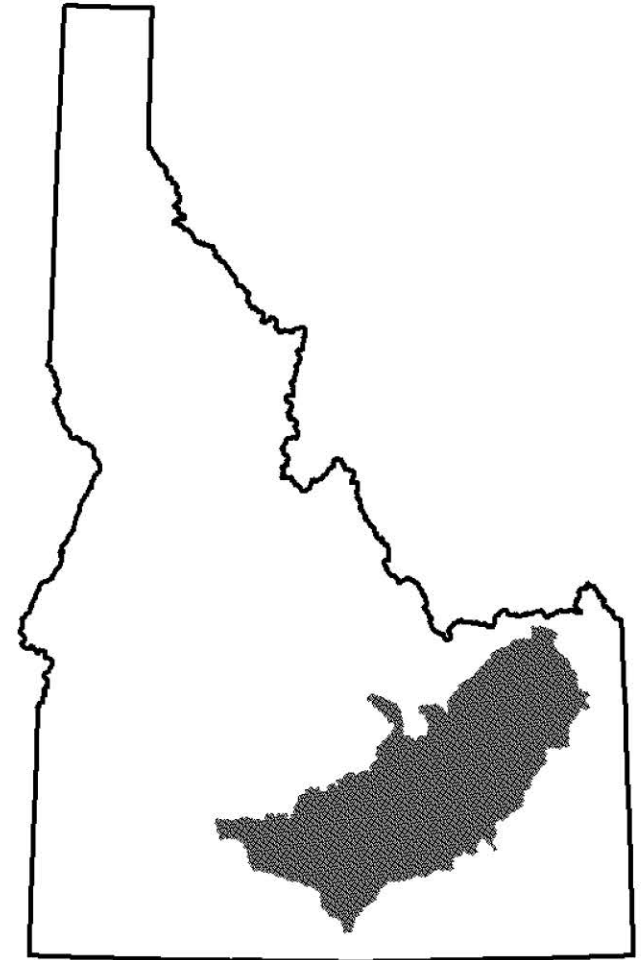






IRRIGATION RETURN FLOWS

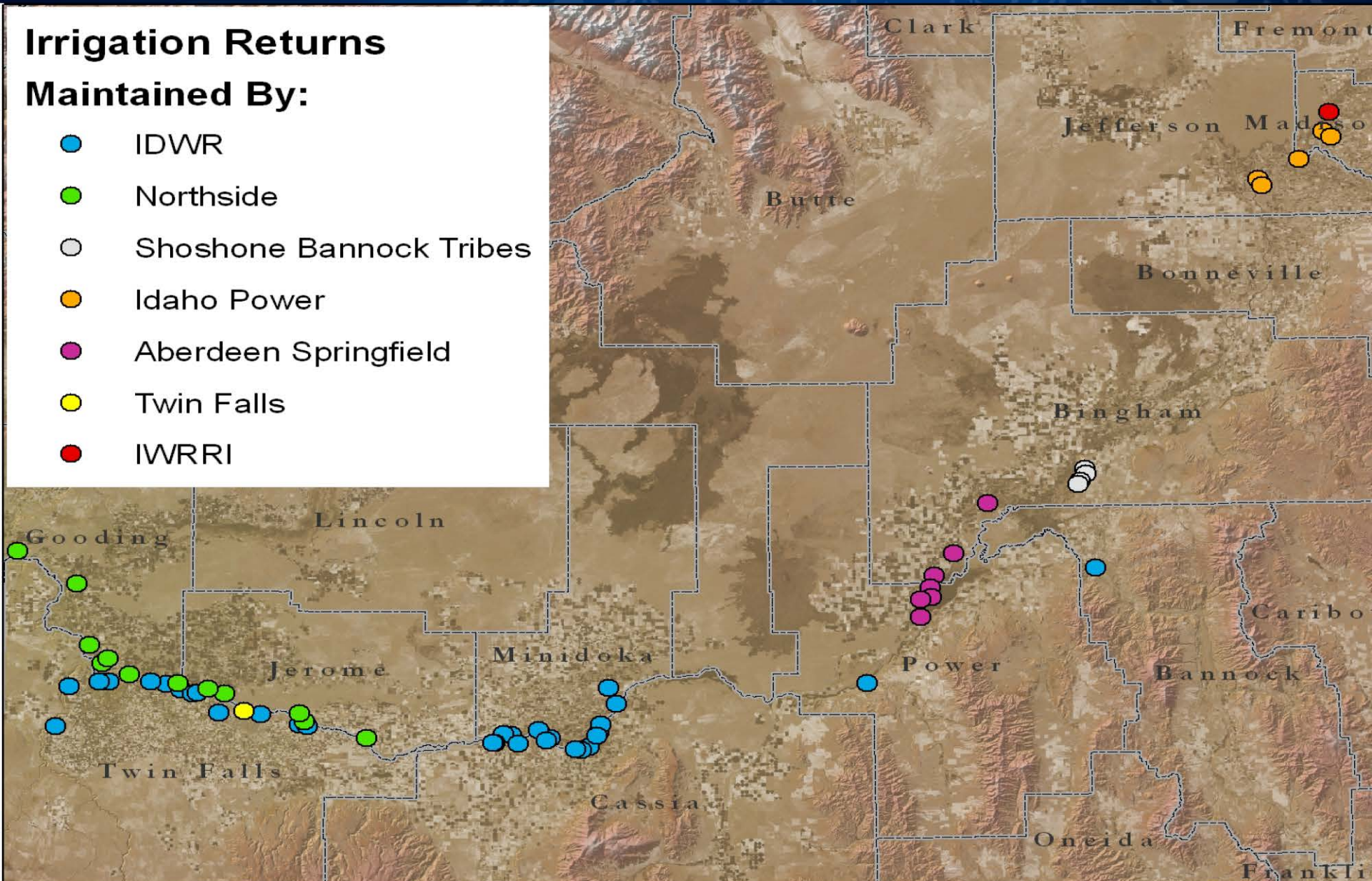
- 2006 - 44 identified/34 measured
- 2011 – 83 identified/58 measured/3 in development/12 in negotiation



Irrigation Returns

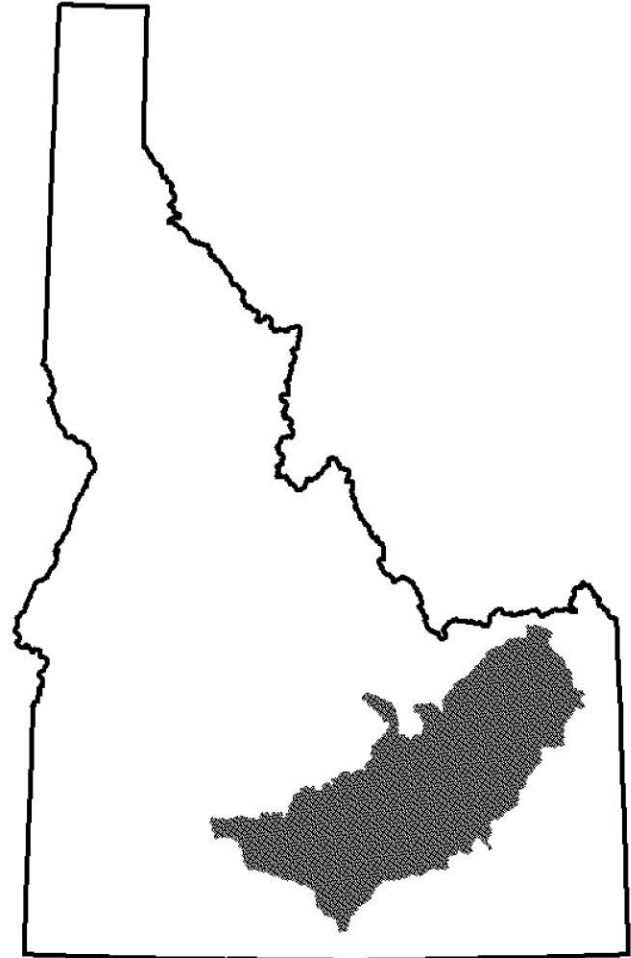
Maintained By:

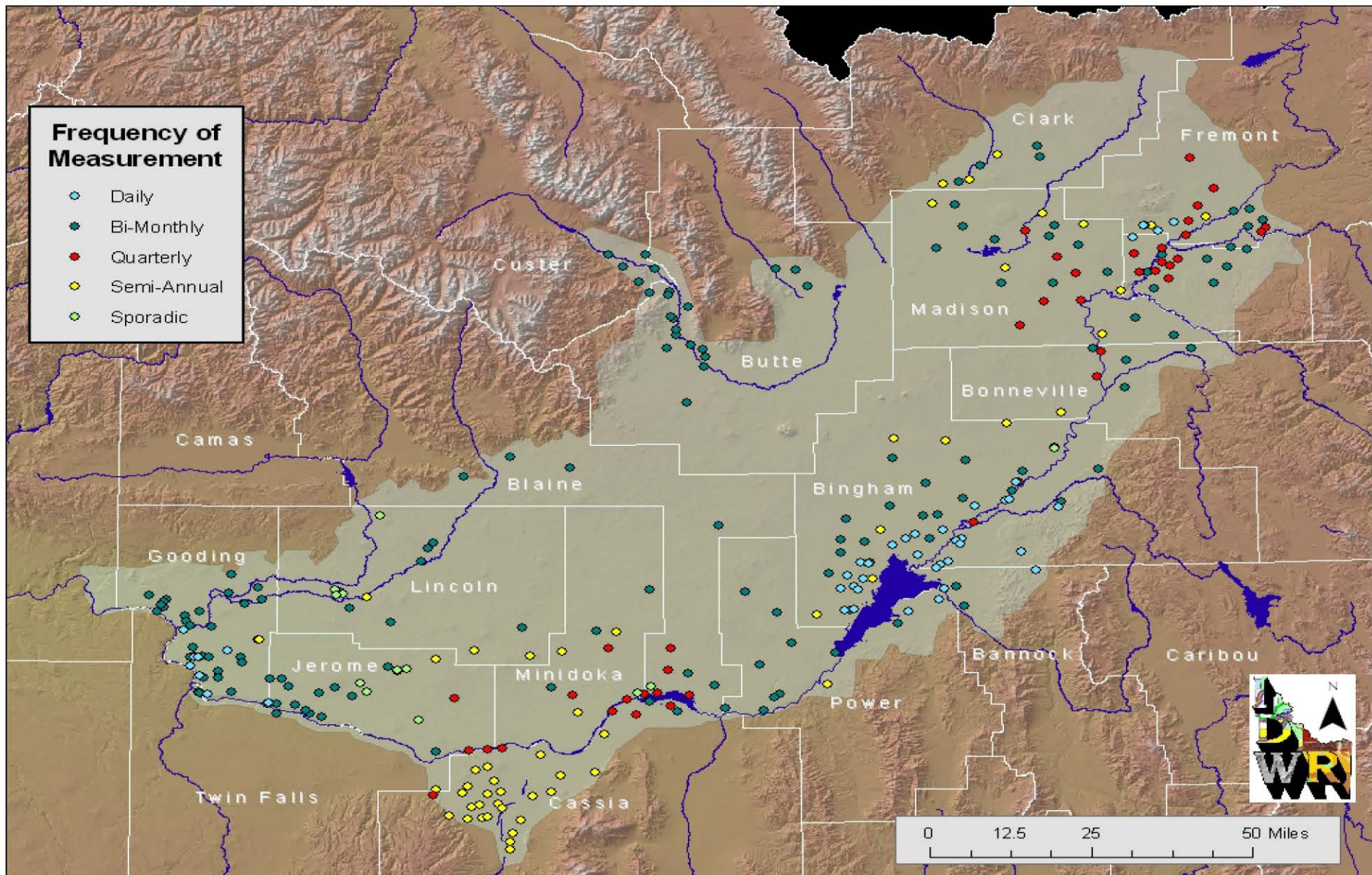
- IDWR
- Northside
- Shoshone Bannock Tribes
- Idaho Power
- Aberdeen Springfield
- Twin Falls
- IWRRI



Ground Water Levels

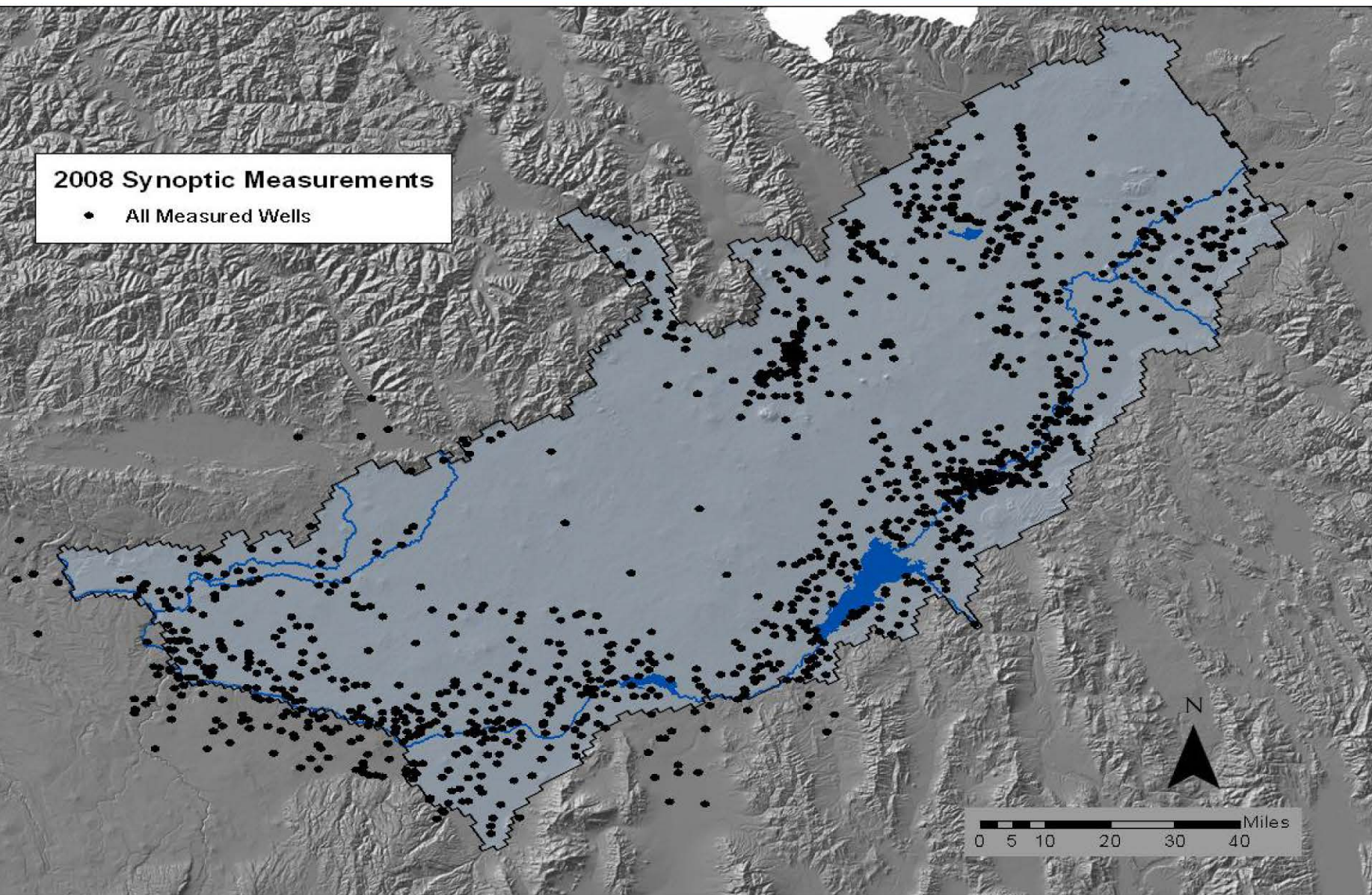
- Hand measurements
 - bimonthly
 - quarterly
 - semi-annual
 - annual
- Sentinel wells
 - ~ 43 wells with continuous recorders
- Synoptic measurements
 - ~ 1000 wells measured in 1980, 2001, 2002, 2008, **2013**





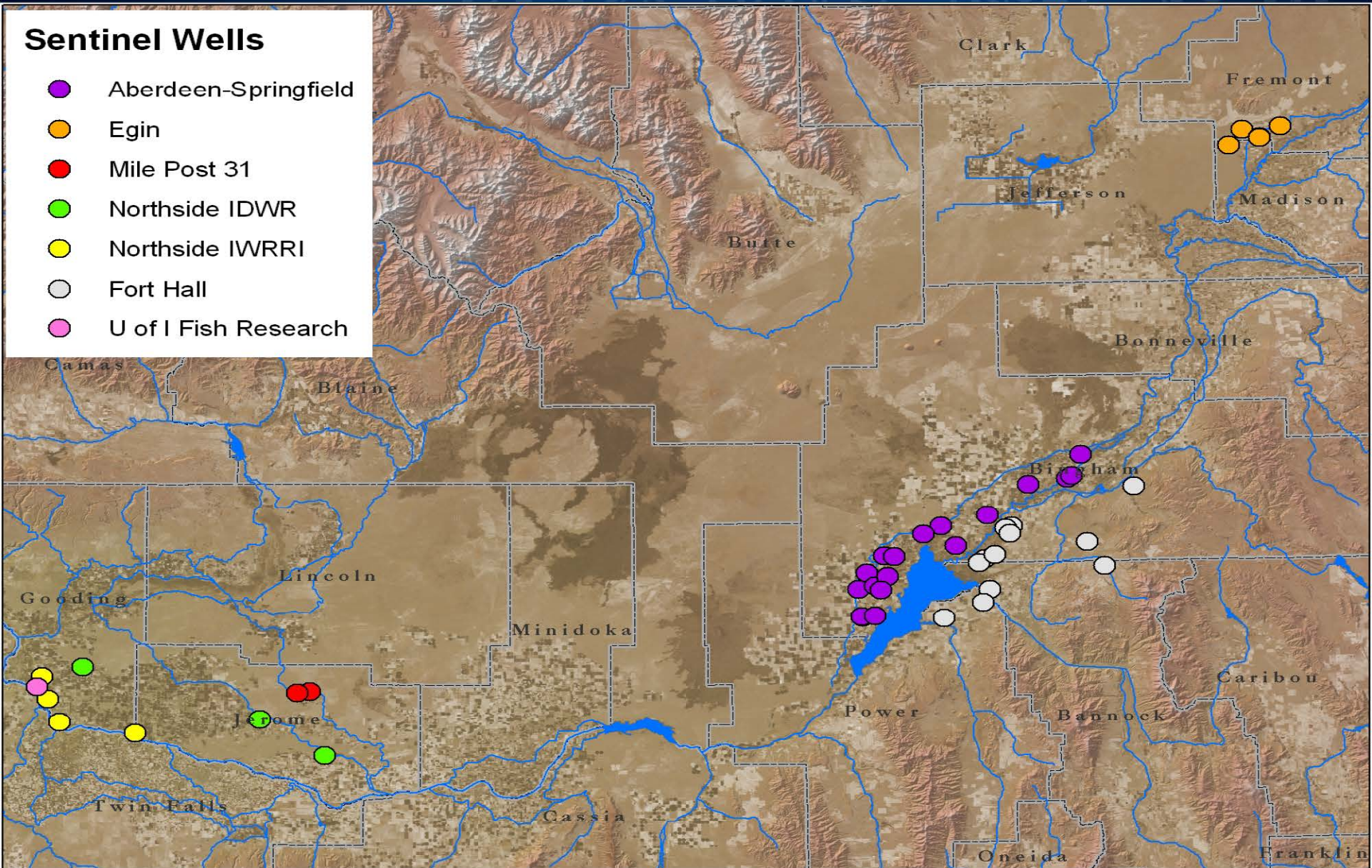
2008 Synoptic Measurements

- All Measured Wells



Sentinel Wells

- Aberdeen-Springfield
- Egin
- Mile Post 31
- Northside IDWR
- Northside IWRRRI
- Fort Hall
- U of I Fish Research



Idaho Water Board Recharge Effort

- Recharge has begun on one canal.
- Waiting on better weather for others to start.
- Anticipate same canals as last year to participate.
- Similar volume of recharge as last year.

Surface Water Call

- No carryover shortfalls from last year.
- Anticipate full reservoirs and a good runoff.
- With the existing water supply forecast, in-season shortfalls are unlikely.