



IDAHO WATER RESOURCE BOARD

ITB 2020-002: Priest Lake Outlet Dam Improvement Q & A

Brad Little
Governor

Roger W. Chase
Chairman
Pocatello
District 4

Jeff Raybould
Vice-Chairman
St. Anthony
At Large

Vince Alberdi
Secretary
Kimberly
At Large

Peter Van Der Meulen
Hailey
At Large

Albert Barker
Boise
District 2

John "Bert" Stevenson
Rupert
District 3

Dale Van Stone
Hope
District 1

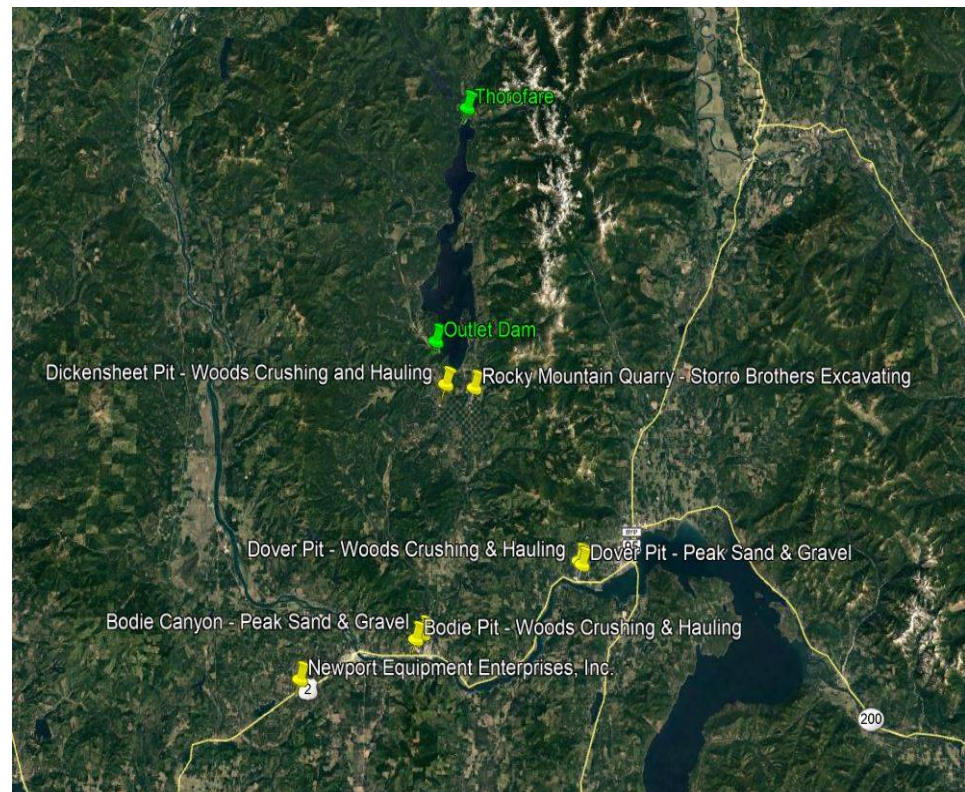
Jo Ann Cole-Hansen
Lewiston
At Large

1. What are the water levels that could be expected at the outlet dam?

Response: Additional information will be provided by IDWR through an addendum regarding discharge and water surface at the outlet dam based on analysis performed for a 2-year discharge with all 11 spillway gates fully open.

2. What local rock sources are available in the nearby region?

Response: A number of rock sources exist within the Bonner County area within the vicinity of Priest Lake and Priest River. The sources have variable capability in meeting the specifications for rock type and size. The following is a graphic showing the locations of rock quarries within the project vicinity. These do not represent any source relative to a specific type of stone product called out in the Contract. The locations are provided as additional information for investigation by the Contractor for their determination on meeting the requirements of the contract.



3. Can Baker Tanks and other similar type of construction equipment be staged in the dry river bed below Ordinary High Water.

Response: This question is being reviewed with the permitting agencies. If clarifications are needed based on communication with regulatory agencies, they will be addressed in a future addendum.