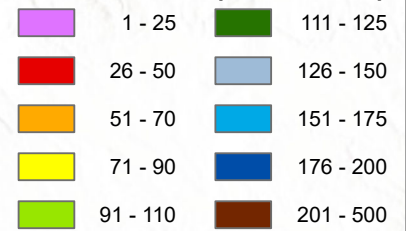



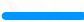
# Mountain Snow Water Equivalent


As of Monday, January 26, 2026

## Percent of Median (1991-2020)

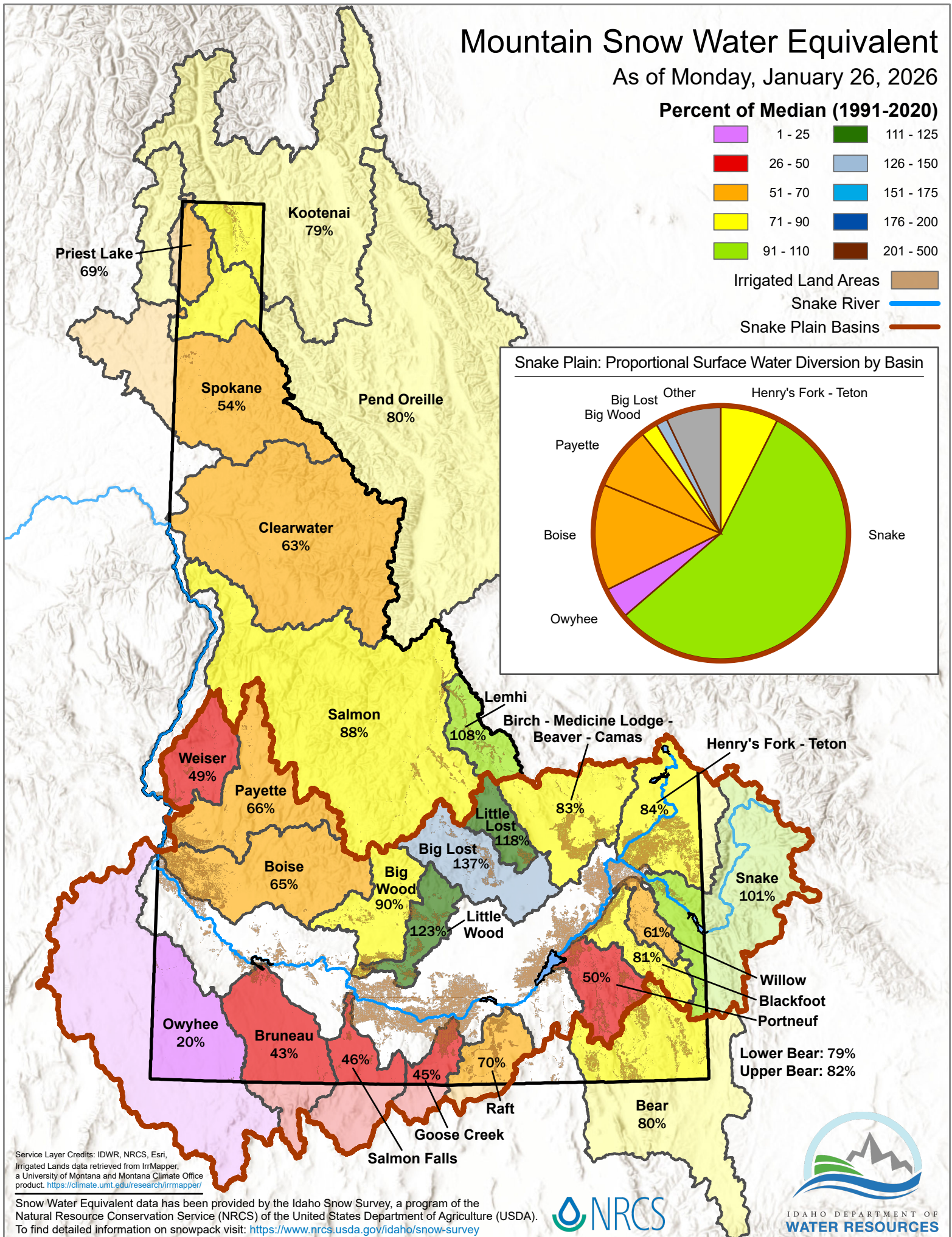
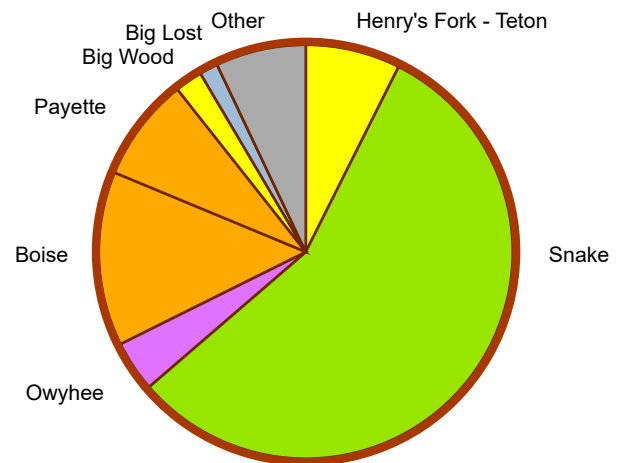


Irrigated Land Areas 

Snake River 

Snake Plain Basins 

## Snake Plain: Proportional Surface Water Diversion by Basin



Service Layer Credits: IDWR, NRCS, Esri,  
Irrigated Lands data retrieved from IrrMapper,  
a University of Montana and Montana Climate Office  
product. <https://climate.unt.edu/research/irrmapper/>

Snow Water Equivalent data has been provided by the Idaho Snow Survey, a program of the  
Natural Resource Conservation Service (NRCS) of the United States Department of Agriculture (USDA).  
To find detailed information on snowpack visit: <https://www.nrcs.usda.gov/idaho/snow-survey>



IDAHO DEPARTMENT OF  
WATER RESOURCES