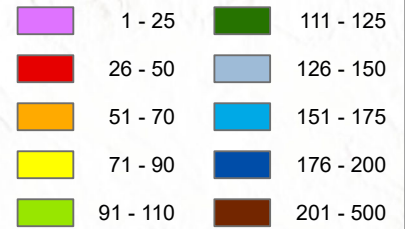


Mountain Snow Water Equivalent

As of Monday, January 19, 2026

Percent of Median (1991-2020)

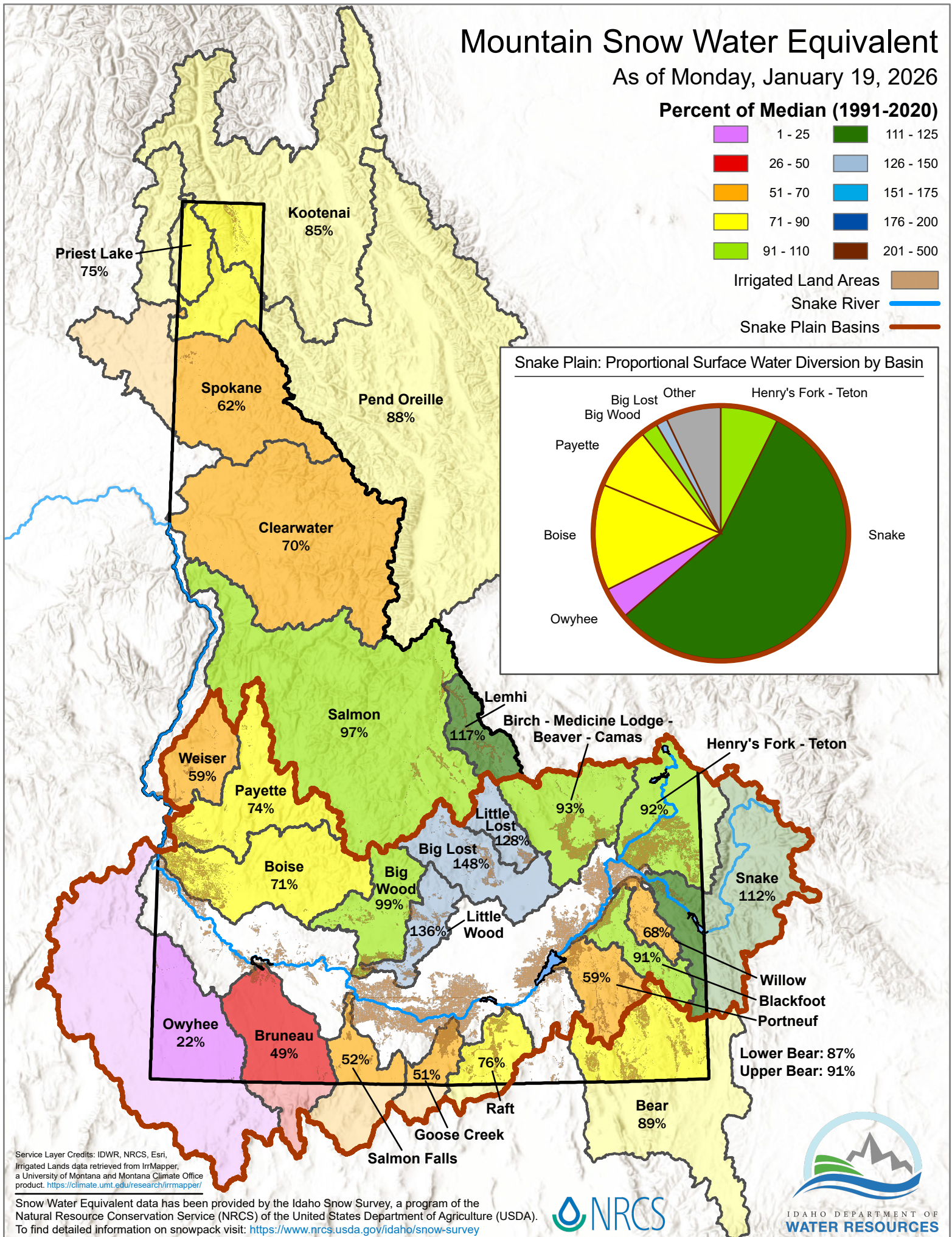
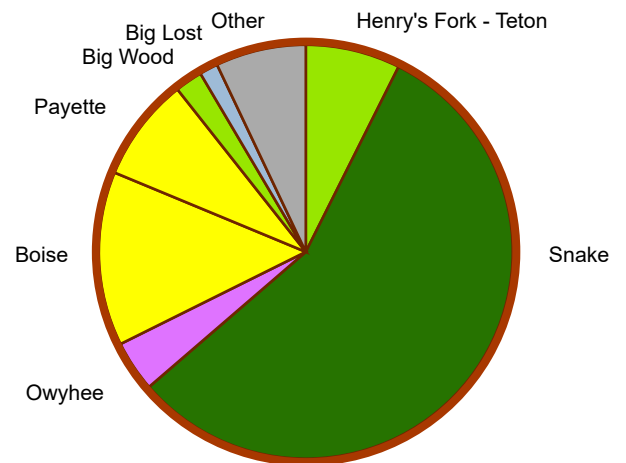


Irrigated Land Areas

Snake River

Snake Plain Basins

Snake Plain: Proportional Surface Water Diversion by Basin



Service Layer Credits: IDWR, NRCS, Esri,
Irrigated Lands data retrieved from IrrMapper,
a University of Montana and Montana Climate Office
product. <https://climate.unt.edu/research/irrmapper/>

Snow Water Equivalent data has been provided by the Idaho Snow Survey, a program of the
Natural Resource Conservation Service (NRCS) of the United States Department of Agriculture (USDA).
To find detailed information on snowpack visit: <https://www.nrcs.usda.gov/idaho/snow-survey>

