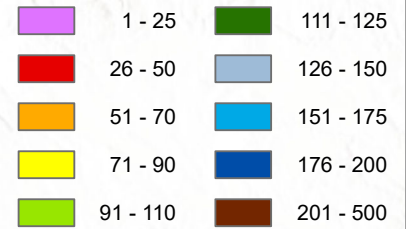


Mountain Snow Water Equivalent

As of Monday, January 12, 2026

Percent of Median (1991-2020)

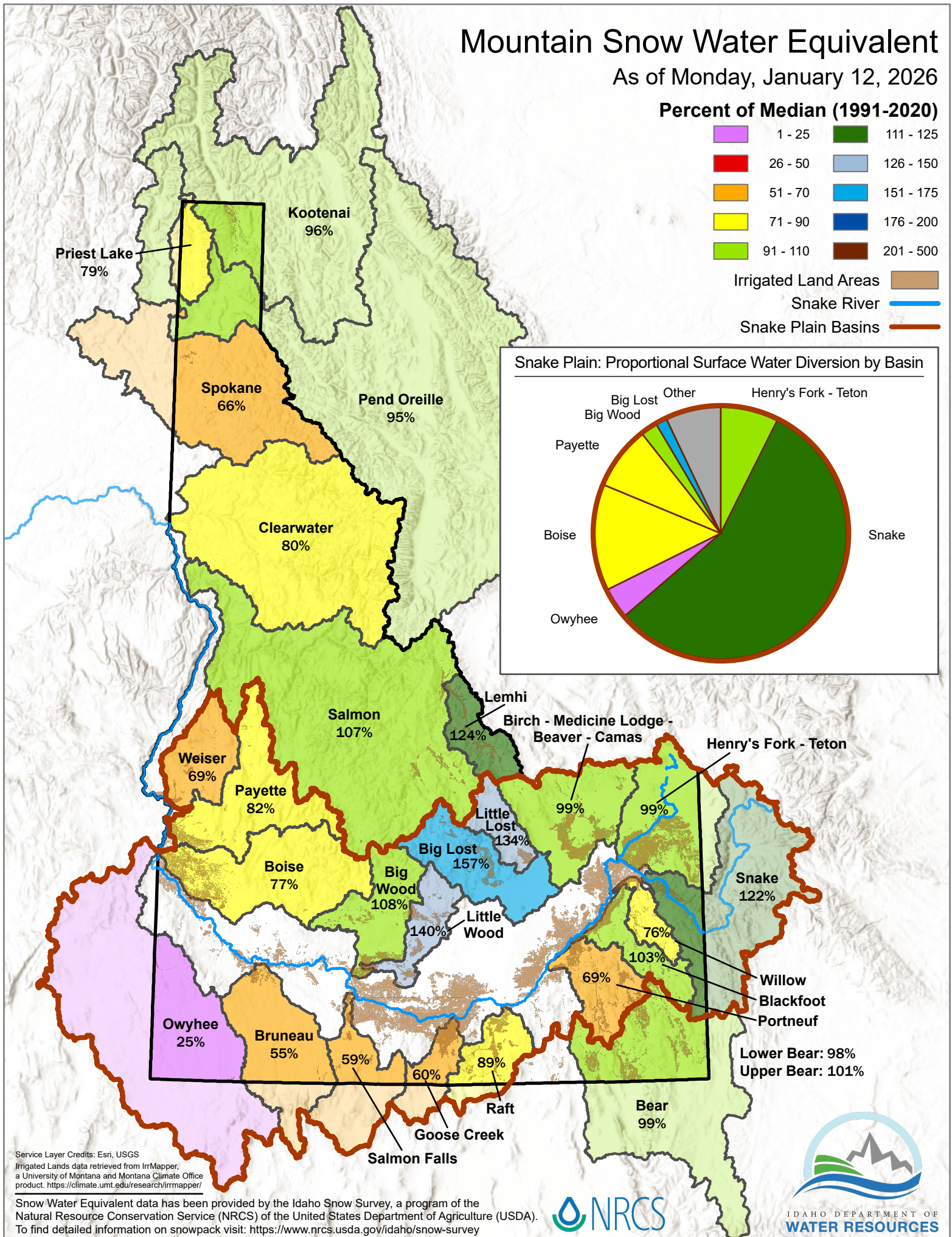
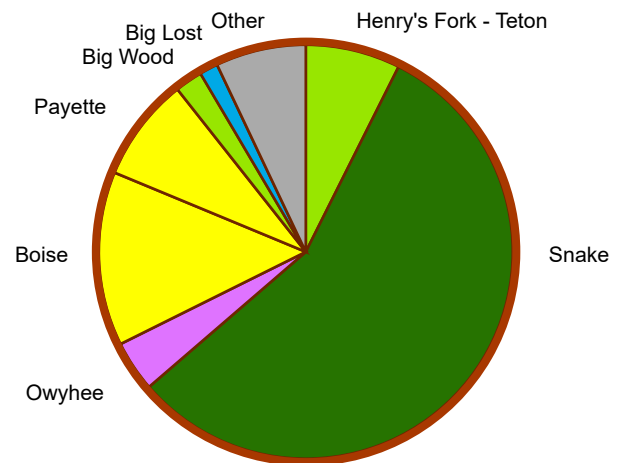


Irrigated Land Areas

Snake River

Snake Plain Basins

Snake Plain: Proportional Surface Water Diversion by Basin



Service Layer Credits: Esri, USGS

Irrigated Lands data retrieved from IrrMapper, a University of Montana and Montana Climate Office product. <https://climate.umt.edu/research/irrmapper/>

Snow Water Equivalent data has been provided by the Idaho Snow Survey, a program of the Natural Resource Conservation Service (NRCS) of the United States Department of Agriculture (USDA). To find detailed information on snowpack visit: <https://www.nrcs.usda.gov/idaho/snow-survey>



IDAHO DEPARTMENT OF
WATER RESOURCES