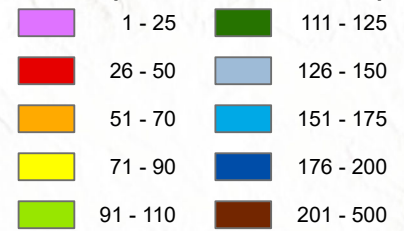


Annual Peak Snowpack as of Monday, May 05, 2025

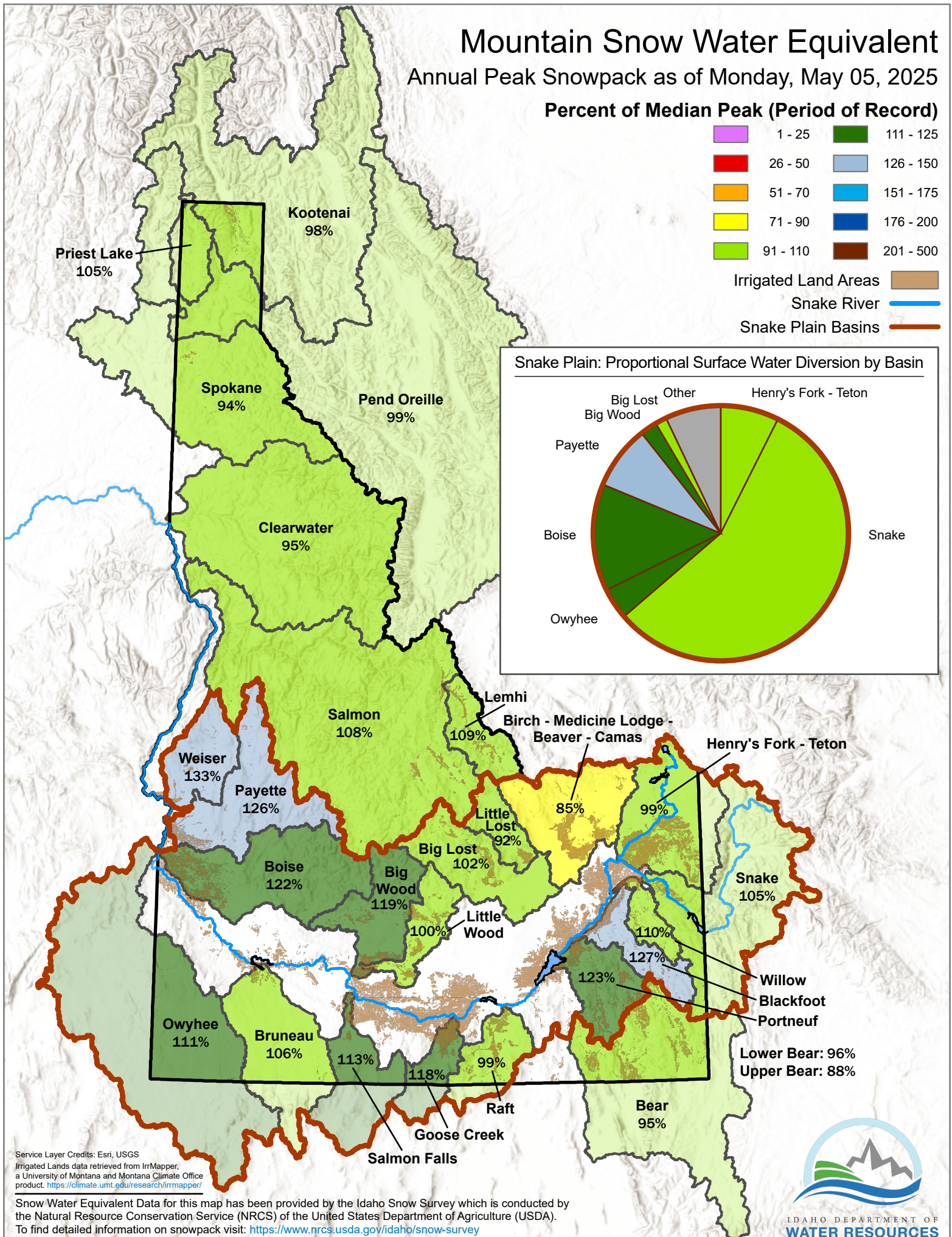
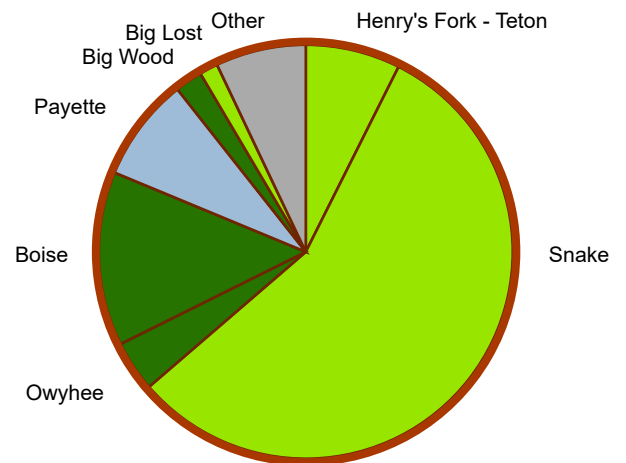
Percent of Median Peak (Period of Record)



Irrigated Land Areas

Snake River —

Snake Plain Basins —



Service Layer Credits: Esri, USGS

Irrigated Lands data retrieved from IrrMapper, a University of Montana and Montana Climate Office product. <https://climate.umt.edu/research/irrmapper/>

Snow Water Equivalent Data for this map has been provided by the Idaho Snow Survey which is conducted by the Natural Resource Conservation Service (NRCS) of the United States Department of Agriculture (USDA).

To find detailed information on snowpack visit: <https://www.nrcs.usda.gov/idaho/snow-survey>

IDAHO DEPARTMENT OF
WATER RESOURCES