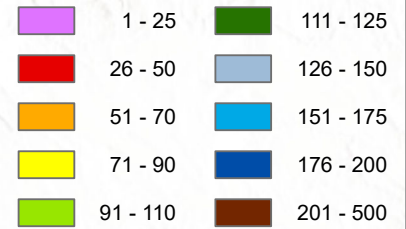


# Mountain Snow Water Equivalent

As of Monday, March 31, 2025

## Percent of Median (1991-2020)

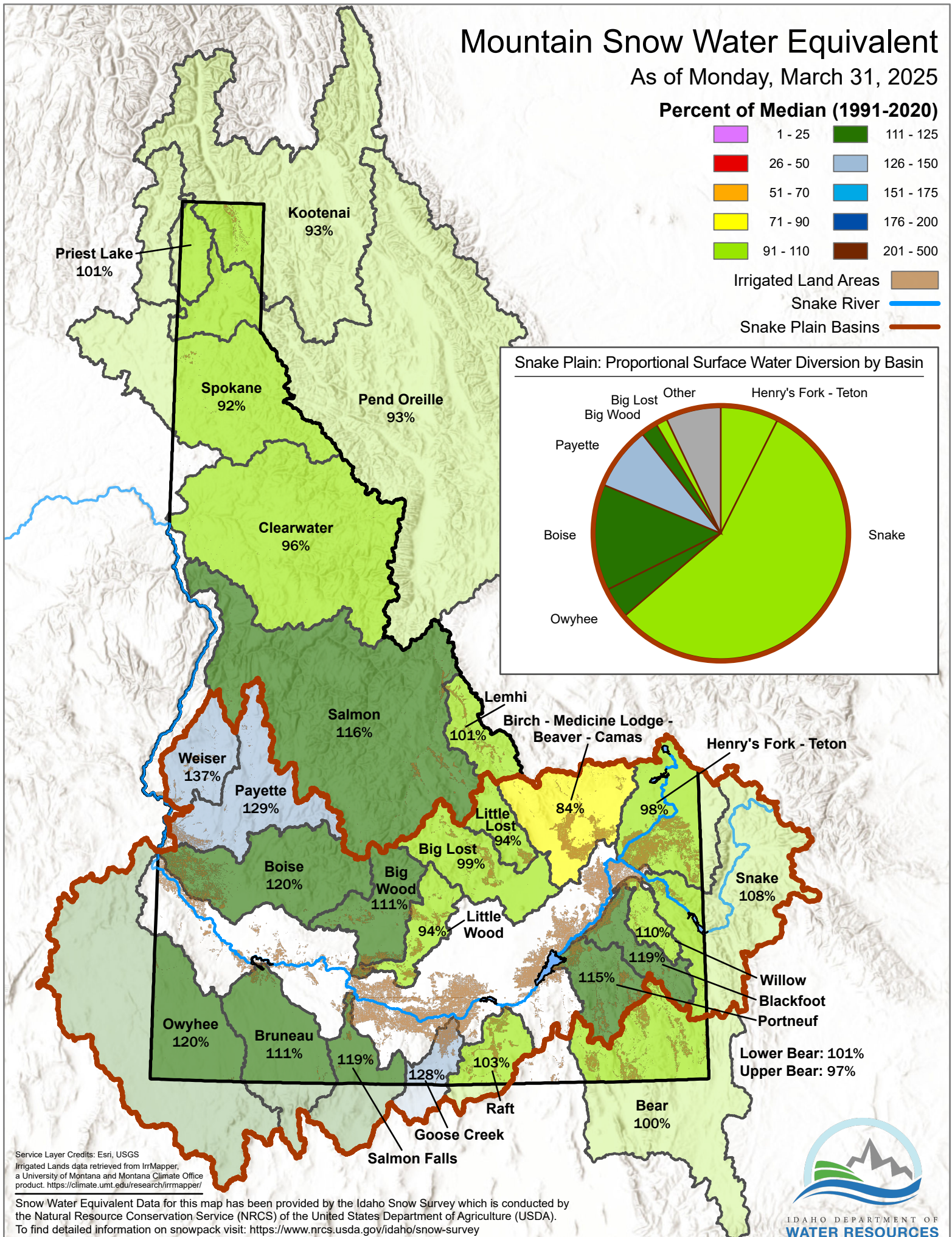
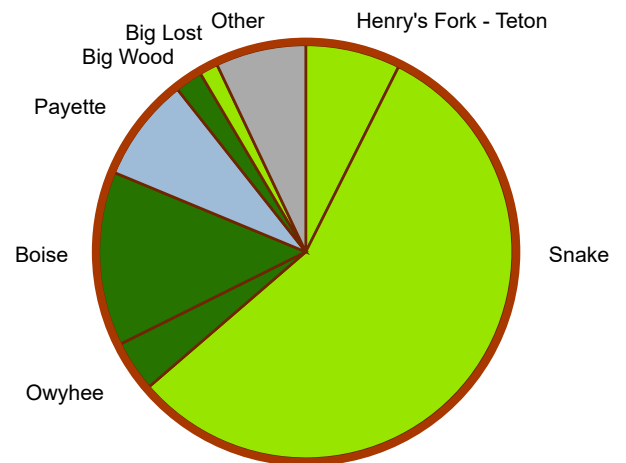


Irrigated Land Areas

Snake River

Snake Plain Basins

## Snake Plain: Proportional Surface Water Diversion by Basin



Service Layer Credits: Esri, USGS

Irrigated Lands data retrieved from IrrMapper, a University of Montana and Montana Climate Office product. <https://climate.unt.edu/research/irrmapper/>

Snow Water Equivalent Data for this map has been provided by the Idaho Snow Survey which is conducted by the Natural Resource Conservation Service (NRCS) of the United States Department of Agriculture (USDA). To find detailed information on snowpack visit: <https://www.nrcs.usda.gov/idaho/snow-survey>



IDAHO DEPARTMENT OF  
WATER RESOURCES