



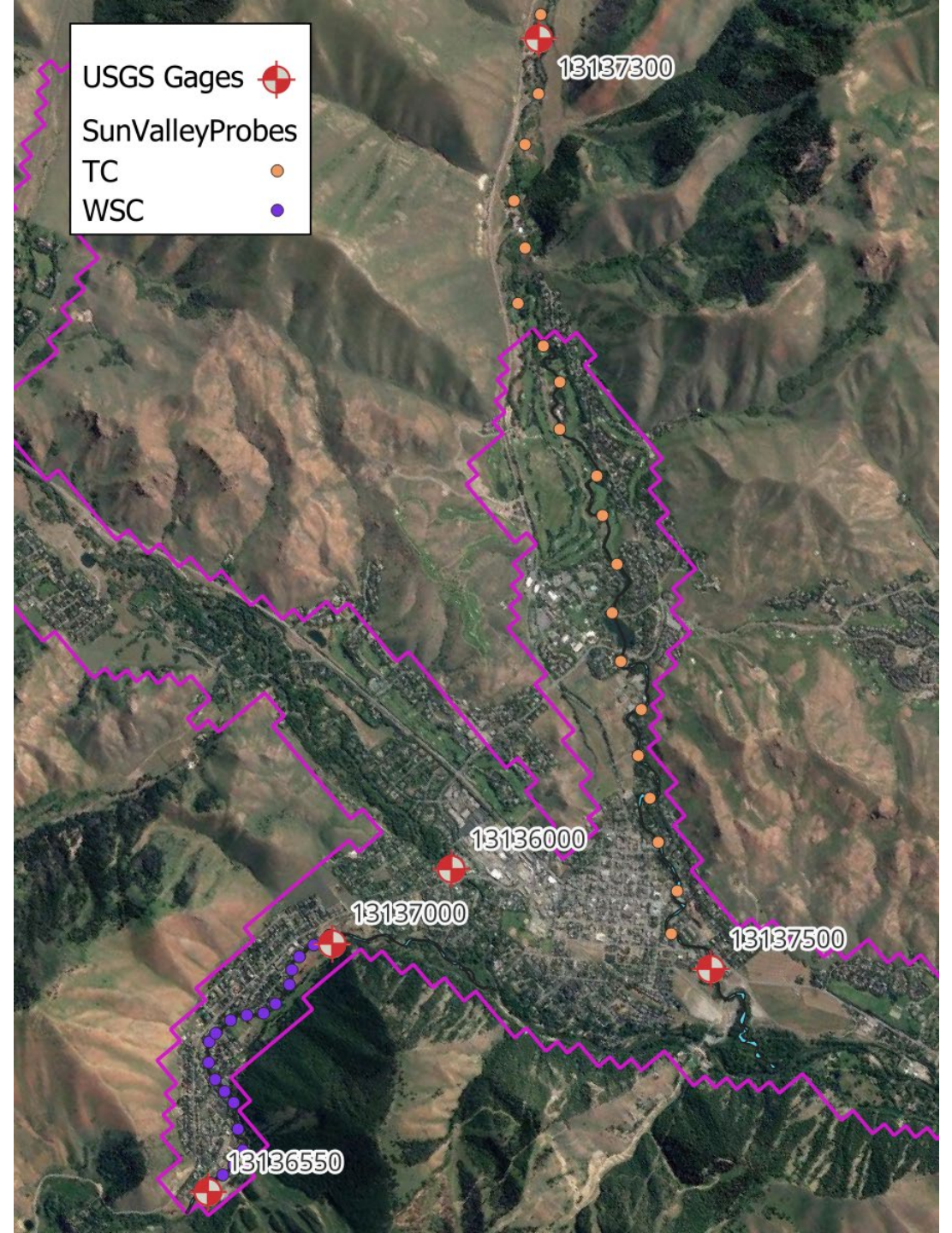
TRIBUTARY REACH TARGETS



Preliminary targets for Trail Creek and Warm Springs Creek

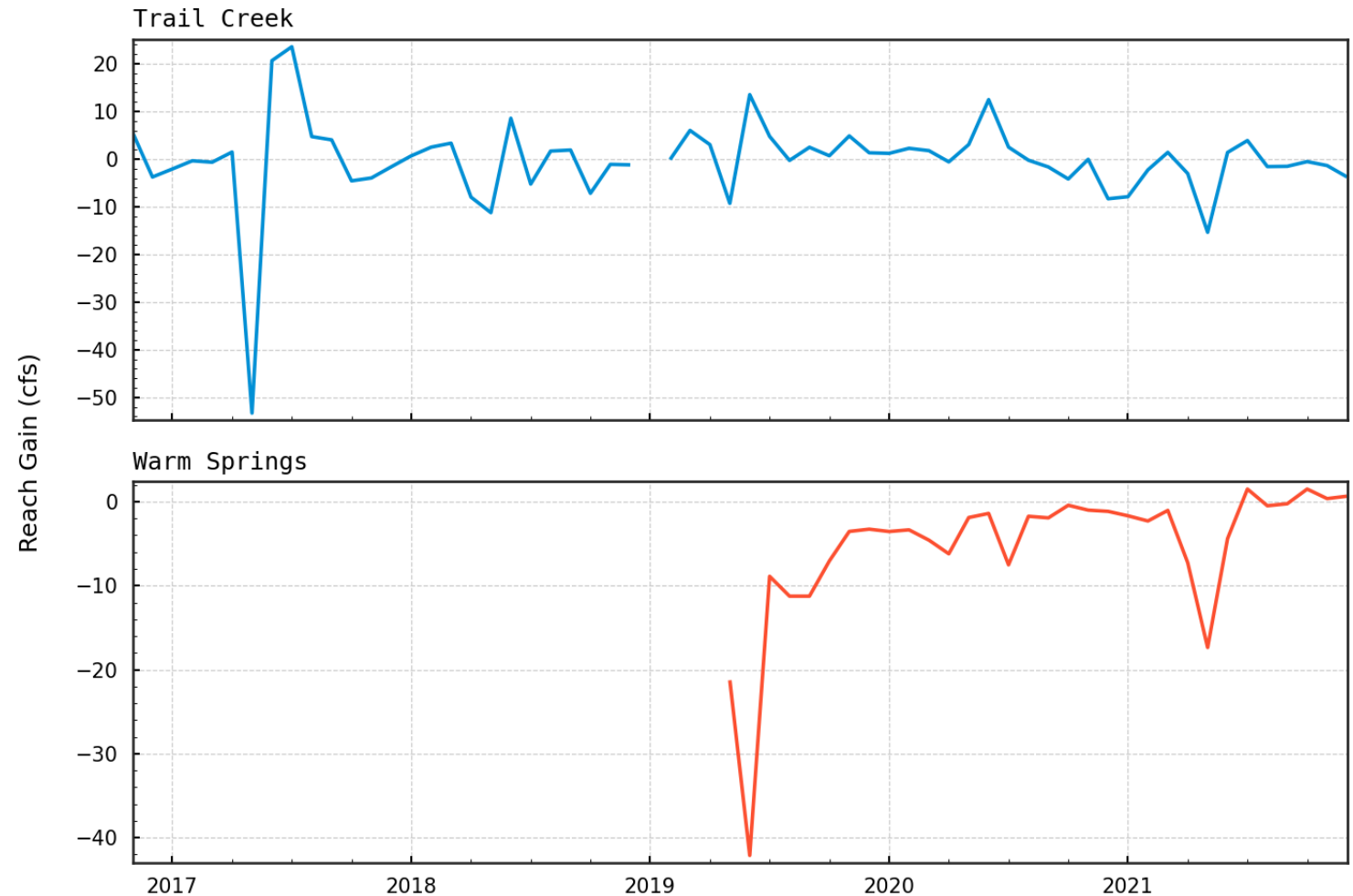
Tributary work

- USGS
 - Trail Creek nr Sun Valley (USGS 13137300) online November 2016
 - Warm Springs at Gates Rd (USGS 13136550) online end of April 2019
- UI Ecohydraulics
 - Three years of temperature probe data
 - Seepage surveys
- IDWR
 - Seepage surveys
 - Fall 2017, 2018, 2019



Preliminary Reach Gains

- Large losses during runoff could be due to large gage error, impoundment in reservoir on Trail Creek
- IDWR Trail Creek Seepage Surveys
 - Uncertainty same magnitude of seepage flux, qualitative results
 - Gaining upstream of model boundary
 - Losing between model boundary (top of golf course) and to below Sun Valley reservoir
 - Losing/gaining below Sun Valley Reservoir
- To be done: Compare/incorporate Tonina and Bertagnoli's seepage flux estimates



Warm Springs Creek & Trail Creek Conductances

- Estimate using area and centerline length of stream per cell, model hk for layer 1
 - $(K*A)/L$
- Ranges from 8,983 – 274,521 ft^2/d
- Mean 51,769 ft^2/d
- Suggested calibration range of alluvial conductivities and typical river geometries per cell
 - 10 – 20,000,000 ft^2/d
 - WRV11 $1\text{e-}10$ – $1\text{e}10$ m^2/d

