



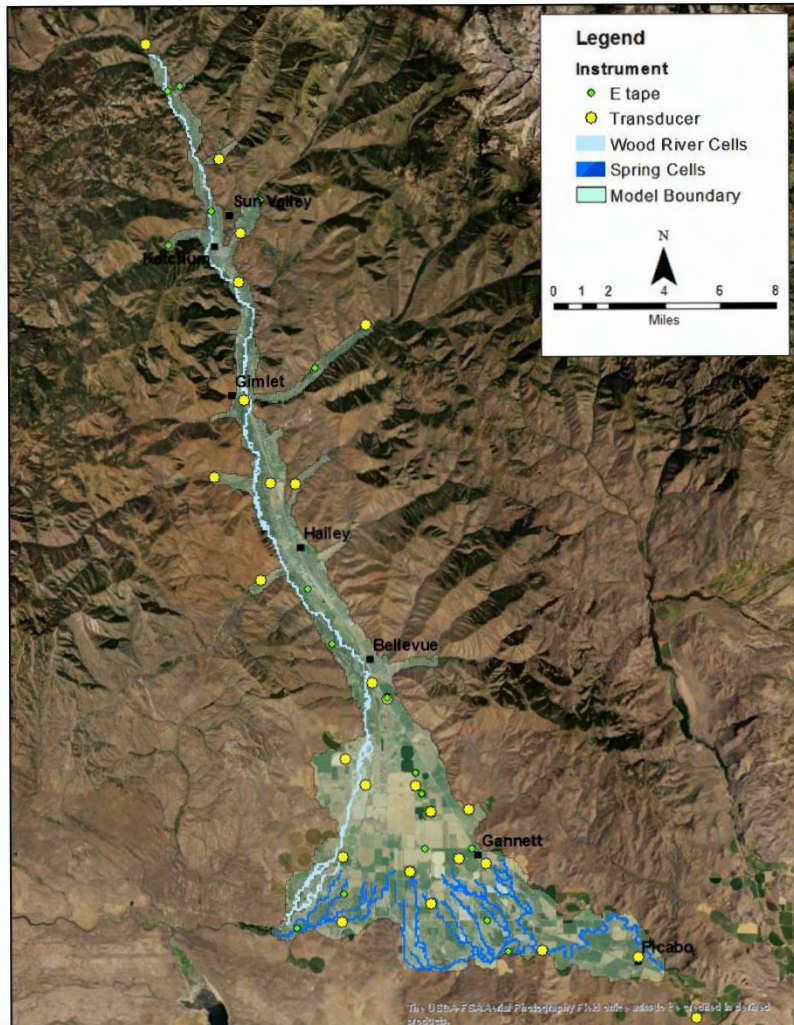
Well Network

Presented by Allan Wylie, IDWR

May 17, 2018



Wood Network Spring 2018



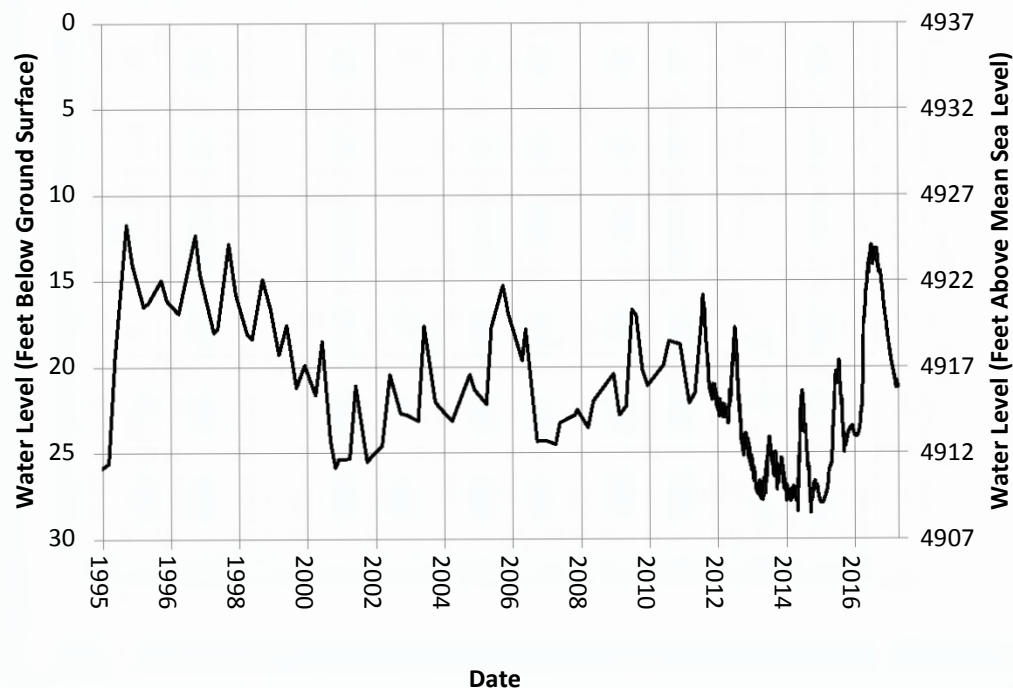
- Replaced a well near Stanton Crossing
 - Dropped well
 - was in confined area but did not respond to this year's runoff
 - Added well
 - not confined
 - Added transducer
- Added a well between Gannett and Bellevue
 - Well is near an old gravel pit used for recharge
- 45 total wells
 - 27 have transducers
 - 18 measured by hand at least twice a year

Wood Network Spring 2018



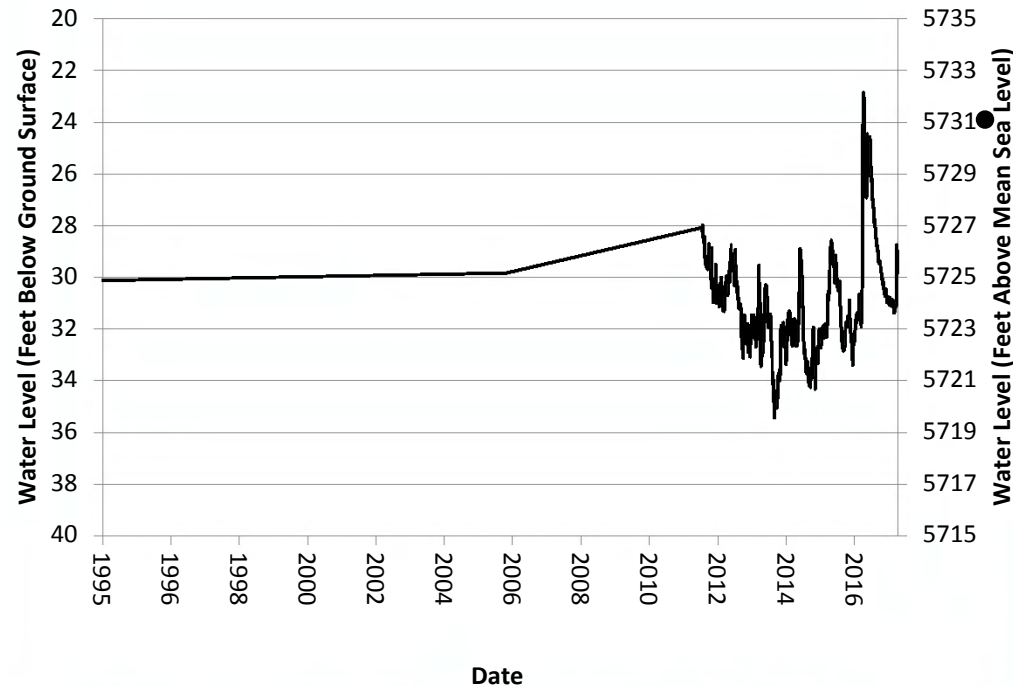
- “Typical” Triangle Well

01S 19E 03CCB2

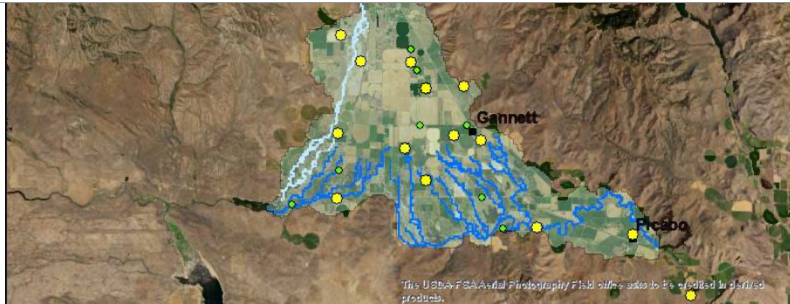


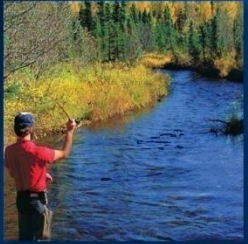
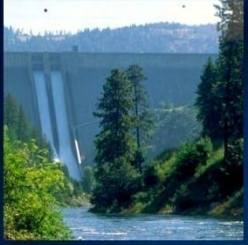
Wood Network Spring 2018

04N 18E 19DBB1



“Typical” Valley Well





End