

# Wood River Valley streamflow measurements for gaining and losing reaches



Jim Bartolino  
U.S. Geological Survey  
Idaho Water Science Center  
August 1, 2013  
Hailey, Idaho

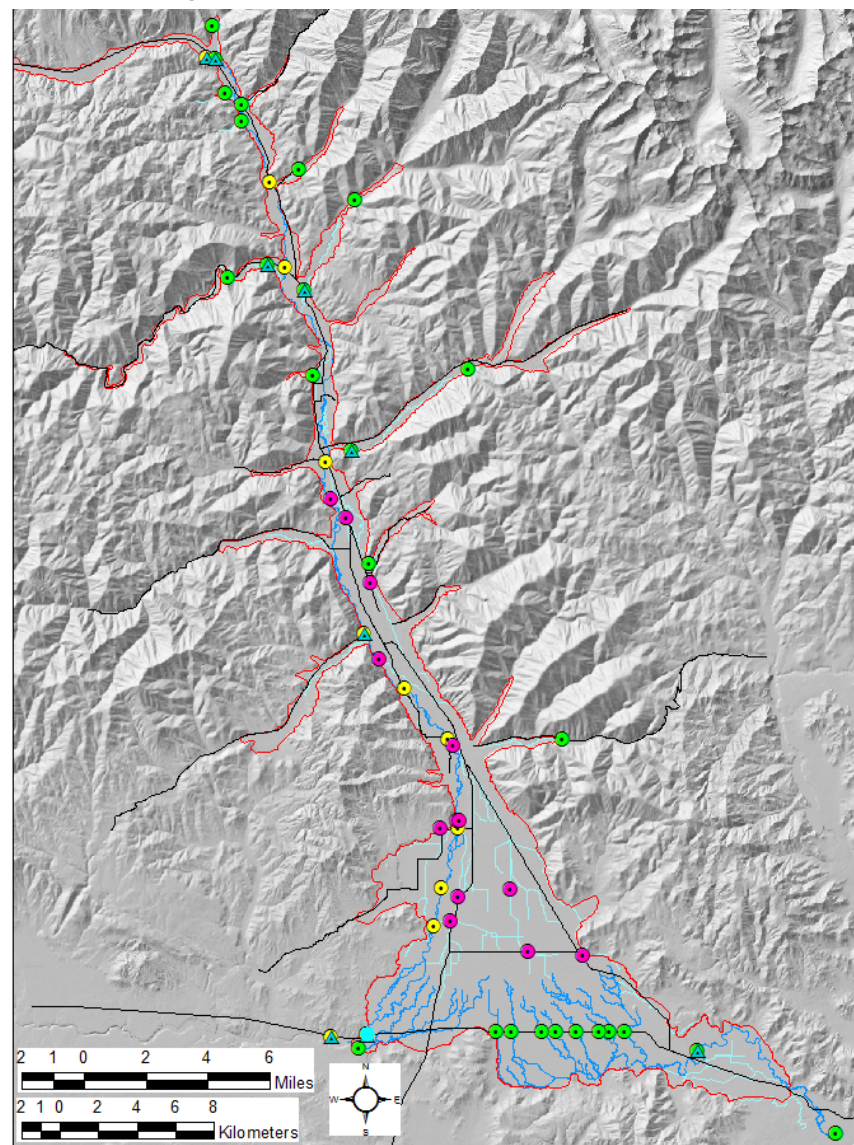


# PROVISIONAL: FOR INFORMATIONAL PURPOSES ONLY

These slides were presented at the Wood River Valley Modeling Technical Advisory Committee meeting Thursday, 01Aug2013, 10am-4pm at the Community Campus, Rm 200, in Hailey. Taken outside the context of the original presentation, these slides may not provide a complete or accurate representation of the speaker's intent.

# Streamflow gain/loss measurements: Aug 2012, Oct 2012, Mar 2013

- ❖ Three gain/loss measurements
  - August 2012
  - October 2012
  - March 2013
- ❖ Measurements sites:
  - Big Wood River (13)
  - Silver Creek (2)
  - Tributaries (24)
  - Canals (13)
- ❖ Some sites were dry



# Streamflow gain/loss measurements: Data example

Name	Station Name	Station ID	Date	Mean mainstem discharge (ft <sup>3</sup> /s)	Mean discharge from tributary (+) or diversion withdrawal (-) (ft <sup>3</sup> /s)	Estimated measurement uncertainty (percentage)	Estimated measurement uncertainty (±) (ft <sup>3</sup> /s)	Estimated streamflow gain (+) or loss (-) attributed to groundwater and associated measurement uncertainty (ft <sup>3</sup> /s)	Estimated measurement uncertainty (±) (ft <sup>3</sup> /s)
<b>BWR 1</b>	BIG WOOD RIVER NEAR KETCHUM	13135500	3/27/13	54.5		4.3	2.34		
<b>Trib 13</b>	NF BIG WOOD RIVER NR SAWTOOTH NRA HQ NR KETCHUM, ID	13135520	3/27/13		15.2	5.3	0.81		
<b>Trib 17</b>	CHOCOLATE GULCH CREEK NR KETCHUM, ID	434611114244600	3/27/13		0.0	0.0	0.00		
<b>Trib 1</b>	EAGLE CREEK AT US HWY 75 NR KETCHUM, ID	13135600	3/27/13		0.42	8.4	0.04		
<b>Trib 18</b>	FOX CREEK AT MOUTH NR KETCHUM, ID	13135700	3/27/13		3.06	3.4	0.10		
<b>BWR 2</b>	BIG WOOD RIVER AT HULEN ROAD BRIDGE NR KETCHUM, ID	13135840	3/27/13	94.5		3.5	3.31	21.3	4.13
<b>BWR 3</b>	BIG WOOD RIVER AT KETCHUM, ID	13136000	3/27/13	91.2		3.6	3.28	-3.30	4.66
<b>Trib 4</b>	WARM SPRINGS CREEK NEAR KETCHUM, ID	13137000	3/27/13		42.9	2.4	1.03		
<b>Trib 6</b>	TRAIL CREEK AT KETCHUM, ID	13137500	3/27/13		12.3	3.7	0.46		
<b>Trib 9</b>	CLEAR CREEK AT US HWY 75 NR KETCHUM, ID	433817114211800	3/27/13		0.86	10.3	0.09		
<b>Trib 8</b>	EAST FORK BIG WOOD RIVER AT GIMLET, ID	13138000	3/27/13		13.1	2.7	0.35		
<b>BWR 4</b>	BIG WOOD RIVER AT GIMLET, ID	13138500	3/27/13	172		2.0	3.44	11.64	4.90

27-28Mar2013

# Streamflow gain/loss measurements: Big Wood River reaches

