

# **Design Documents: Altitude of bedrock surface map example**



Jim Bartolino  
U.S. Geological Survey  
Idaho Water Science Center  
August 1, 2013  
Hailey, Idaho



# PROVISIONAL: FOR INFORMATIONAL PURPOSES ONLY

These slides were presented at the Wood River Valley Modeling Technical Advisory Committee meeting Thursday, 01Aug2013, 10am-4pm at the Community Campus, Rm 200, in Hailey. Taken outside the context of the original presentation, these slides may not provide a complete or accurate representation of the speaker's intent.

# Design document description and purpose

- ❖ Brief intermediate/preliminary description of major model decisions and processes
- ❖ Purpose:
  - To make decisions transparent
  - To facilitate discussion
  - To ease preparation of the final report
- ❖ These are preliminary, draft, status reports—the *final* version will be the model report

# Design decision format

- ❖ Design document description and purpose
  - Standard language
- ❖ Background
  - Statement of issue/problem/need
- ❖ Design decision
  - Description of decision including technical description and rationale
- ❖ Summary
- ❖ References cited

# Example: Altitude of bedrock surface map

❖ Background: Map published in framework report problematic for model

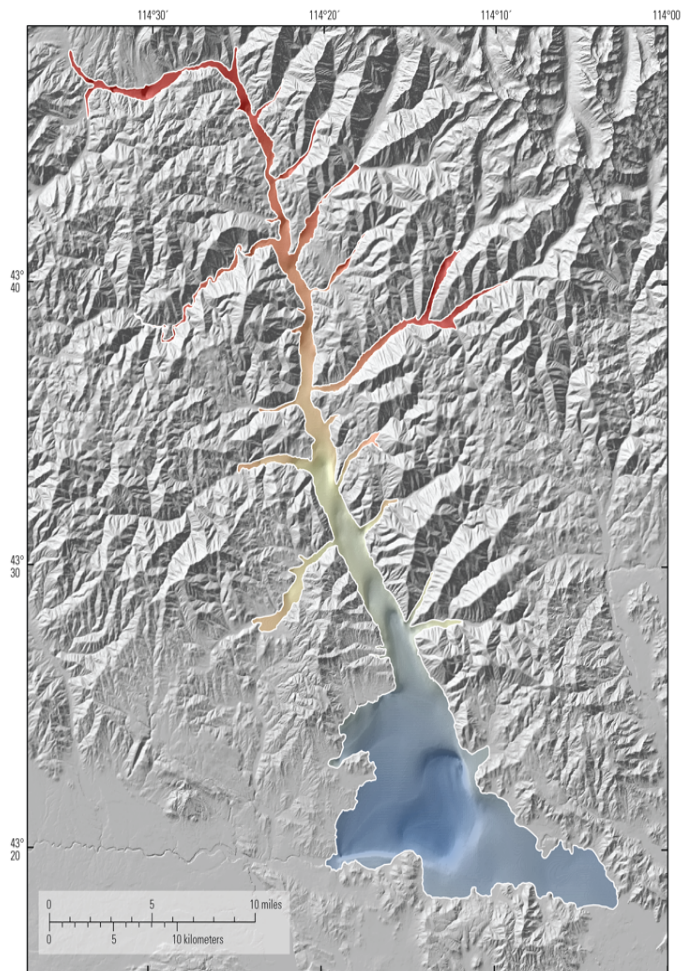
- Vertical disconnects
- Minimum cell thickness
- Minor errors in original

❖ Decision

- Corrected errors
- Reinterploated
- Minimum depth was set to 2 m

# Map revision

**SIR 2012-5053**



**Most recent revision**

