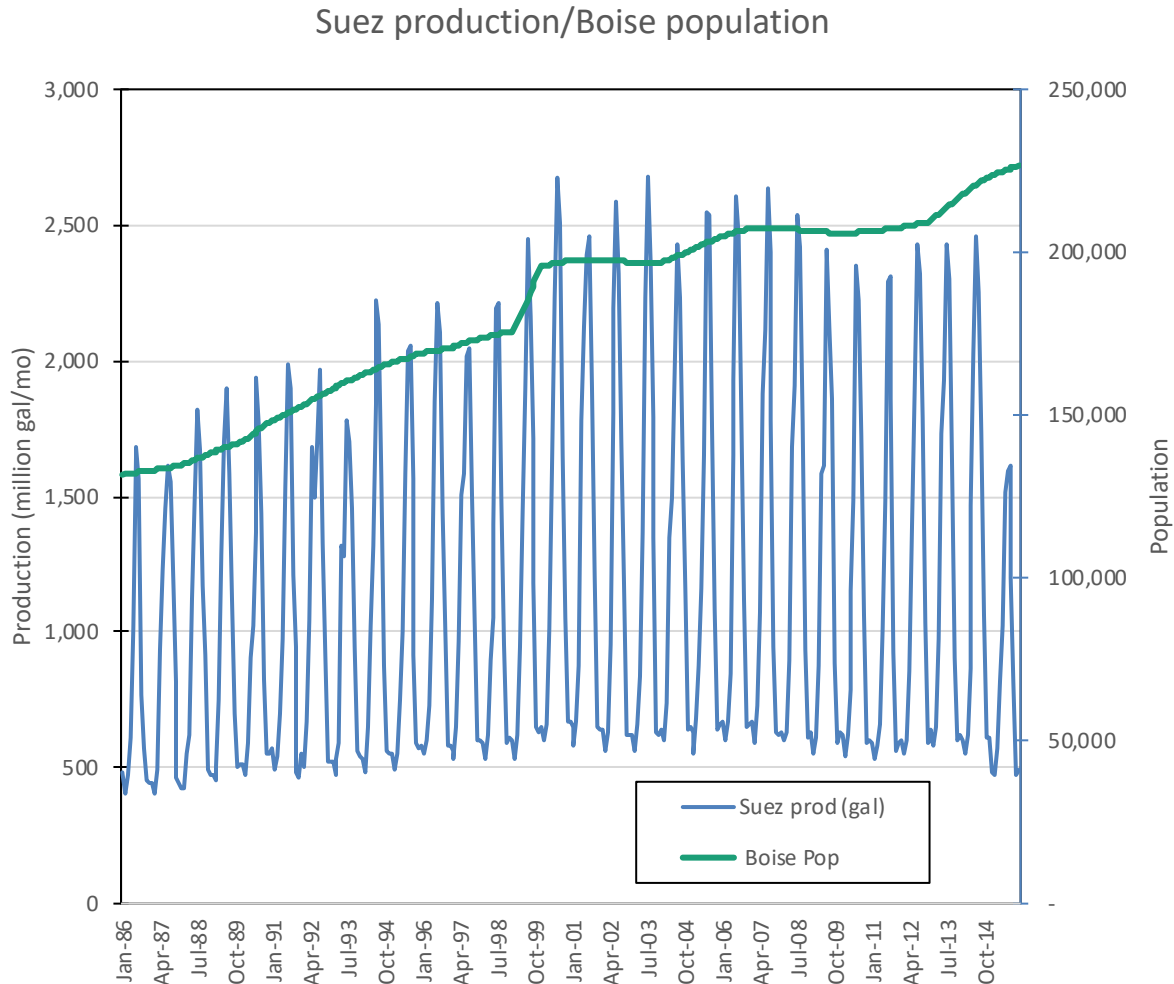


Municipal production, Treasure Valley, Idaho



Jim Bartolino
U.S. Geological Survey
Idaho Water Science Center
June 4, 2020

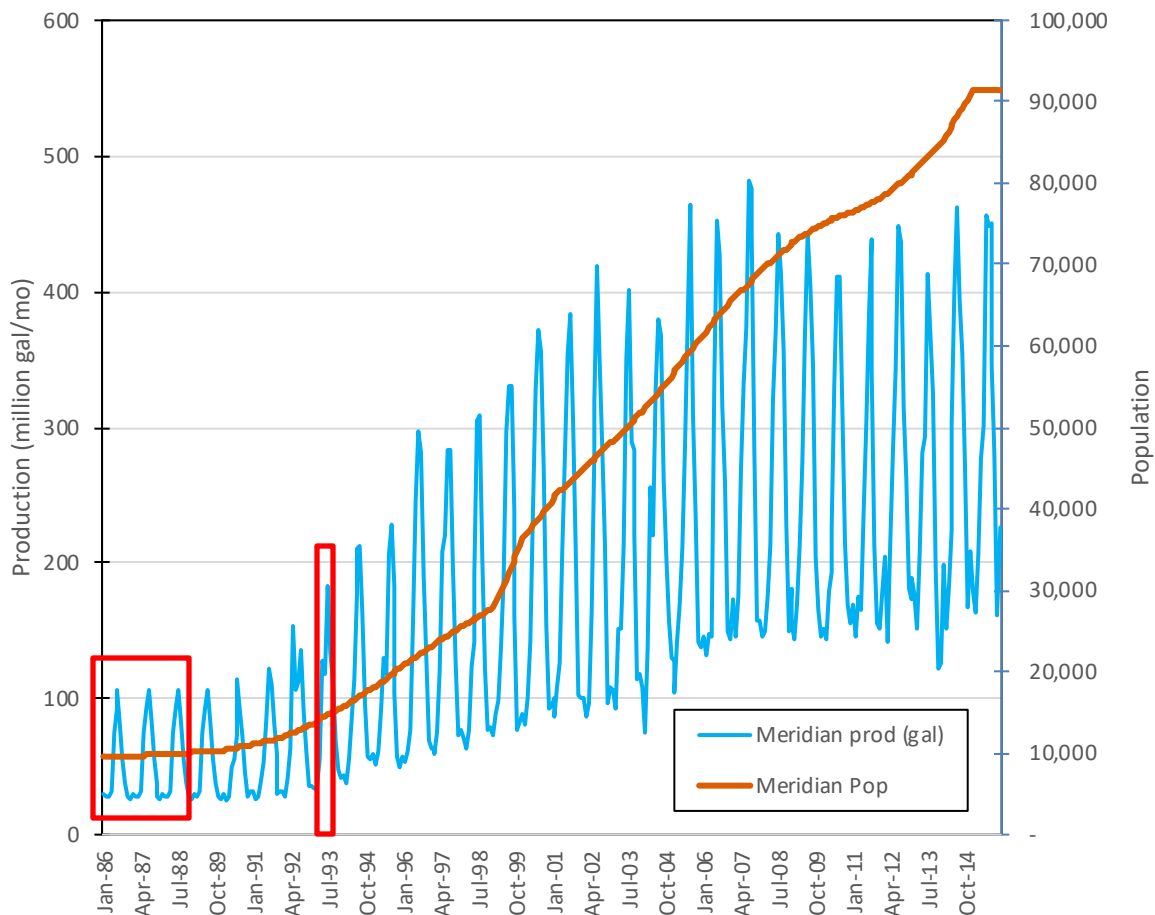
Suez Water



- ❖ Complete data 1986-2015
- ❖ About 108 wells
- ❖ Includes Raney collectors and ASR injection
- ❖ Boise population \neq Suez customers
- ❖ Summer 2015?

City of Meridian

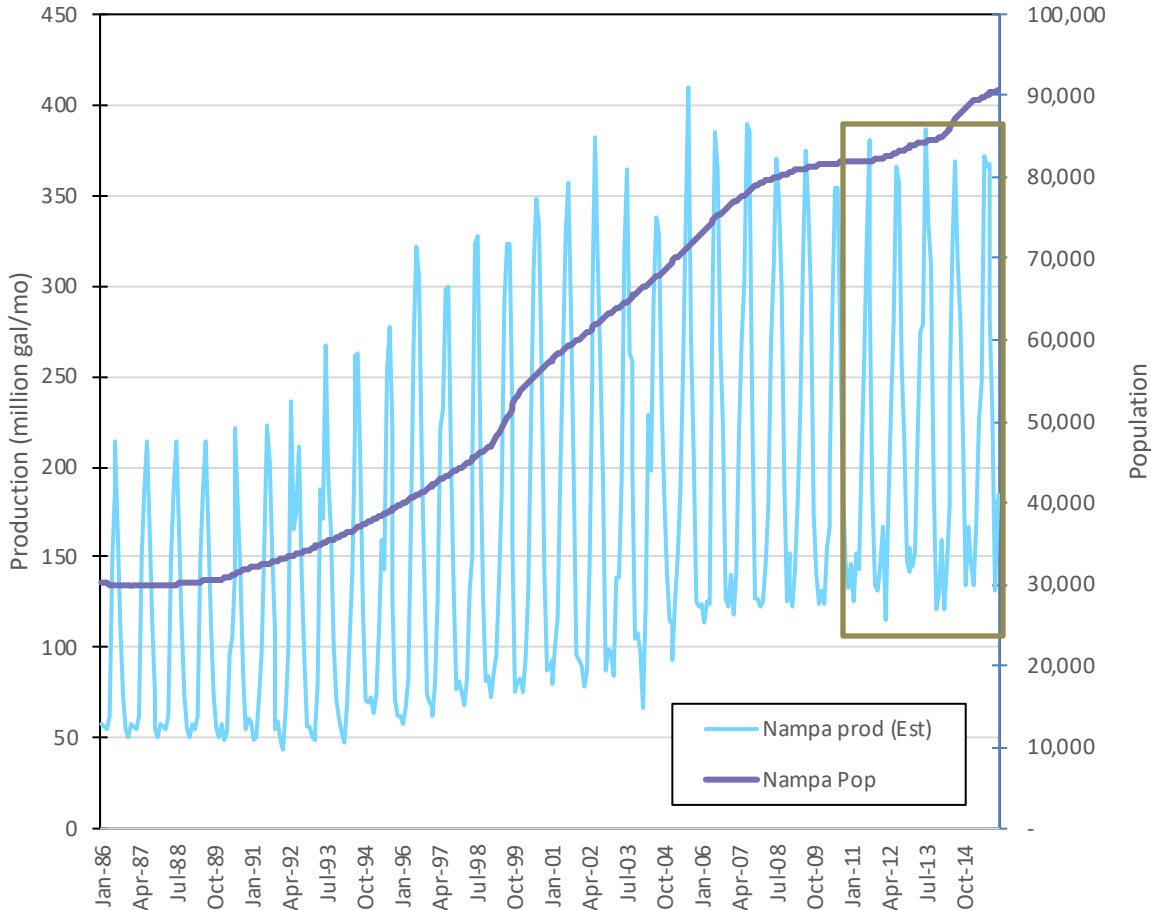
Meridian production/population



- ❖ Missing 1986-88, Mar-Jul 1993
- ❖ About 25 wells
- ❖ Applied 1989 production to 1986-88
- ❖ Used the monthly ratio of Boise-Meridian production for missing 1993 months

City of Nampa-municipal

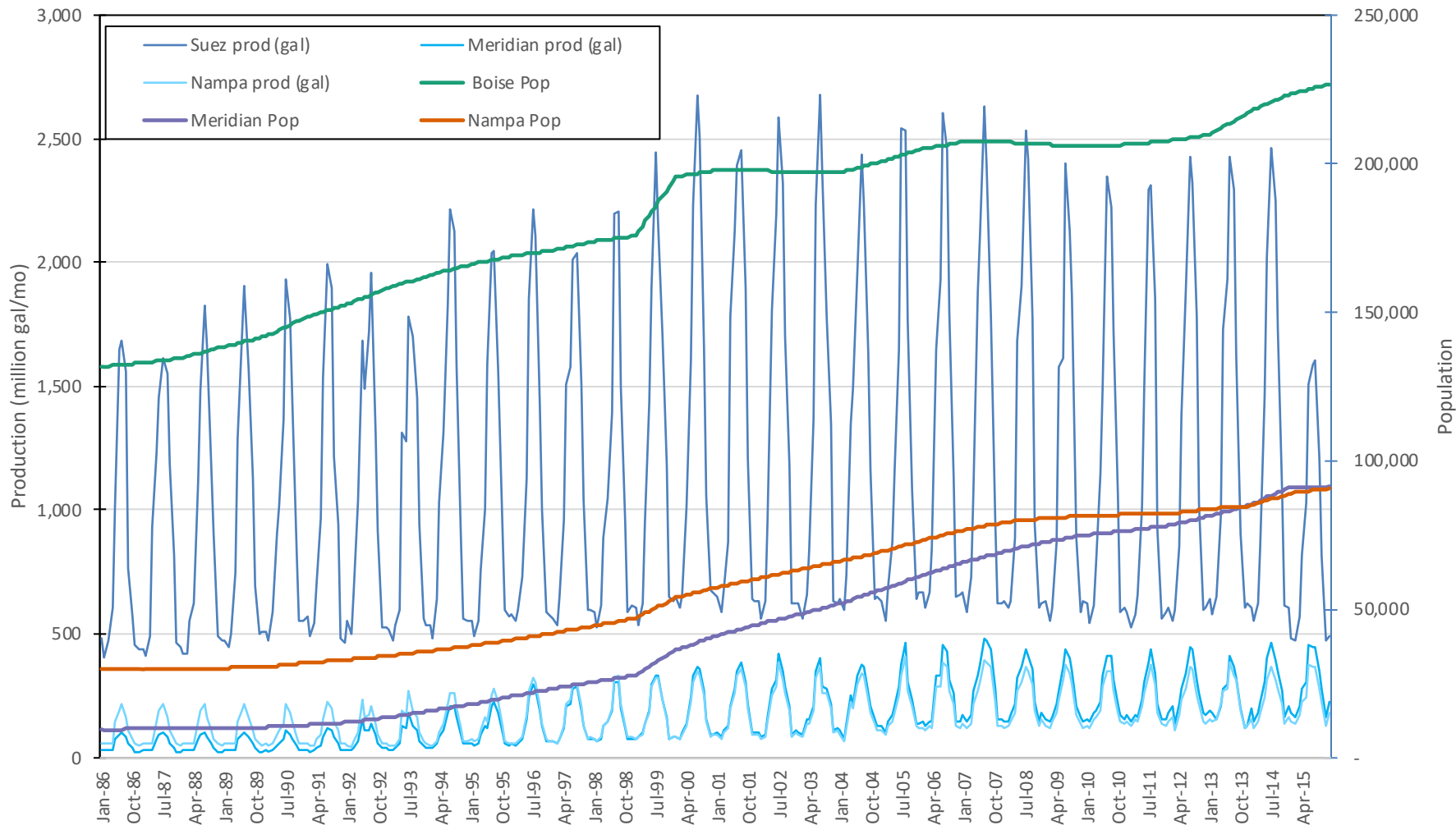
Nampa production/population



- ❖ Had yearly by well, 2011-17
- ❖ 18 wells
- ❖ Applied the yearly ratio of Boise-Meridian production 2011-15 to model period
- ❖ Used Meridian monthly ratios to get Nampa monthly production
- ❖ Partitioned monthly data by well based on 2011-15 data

Production and population

Suez/Boise, Meridian, and Nampa production and population



Approximate monthly per capita

Suez/Boise, Meridian, and Nampa approximate monthly per capita

