

# Hydrogeologic framework, Treasure Valley, Idaho: update



Jim Bartolino  
U.S. Geological Survey  
Idaho Water Science Center  
June 6, 2019

Drilling of IWSC09  
USGS IdWSC  
14Mar11

# Status

- ❖ The hydrogeologic framework report is in review.
- ❖ Finally.
- ❖ 34 p. of text, 6 figs, 6 tables, and 21 p. of references.
- ❖ There will be a separate data release of the 3D hydrogeologic framework model (3D HFM).
- ❖ The report and data release should be out by Thanksgiving.

# Hydrogeologic units

- ❖ Four units based on lithology/depositional environment
  - Coarse-grained fluvial and alluvial deposits: sand and gravel
  - Fine-grained lacustrine deposits: silt and clay
  - Pliocene-Pleistocene and Miocene basalts: basalt and scoria, includes Columbia River Basalt
  - Rhyolitic and granitic basement: rhyolite, Idaho batholith granite

Figure 1.--Map showing locations of communities, weather stations, and other features, western Snake River Plain, southwestern Idaho

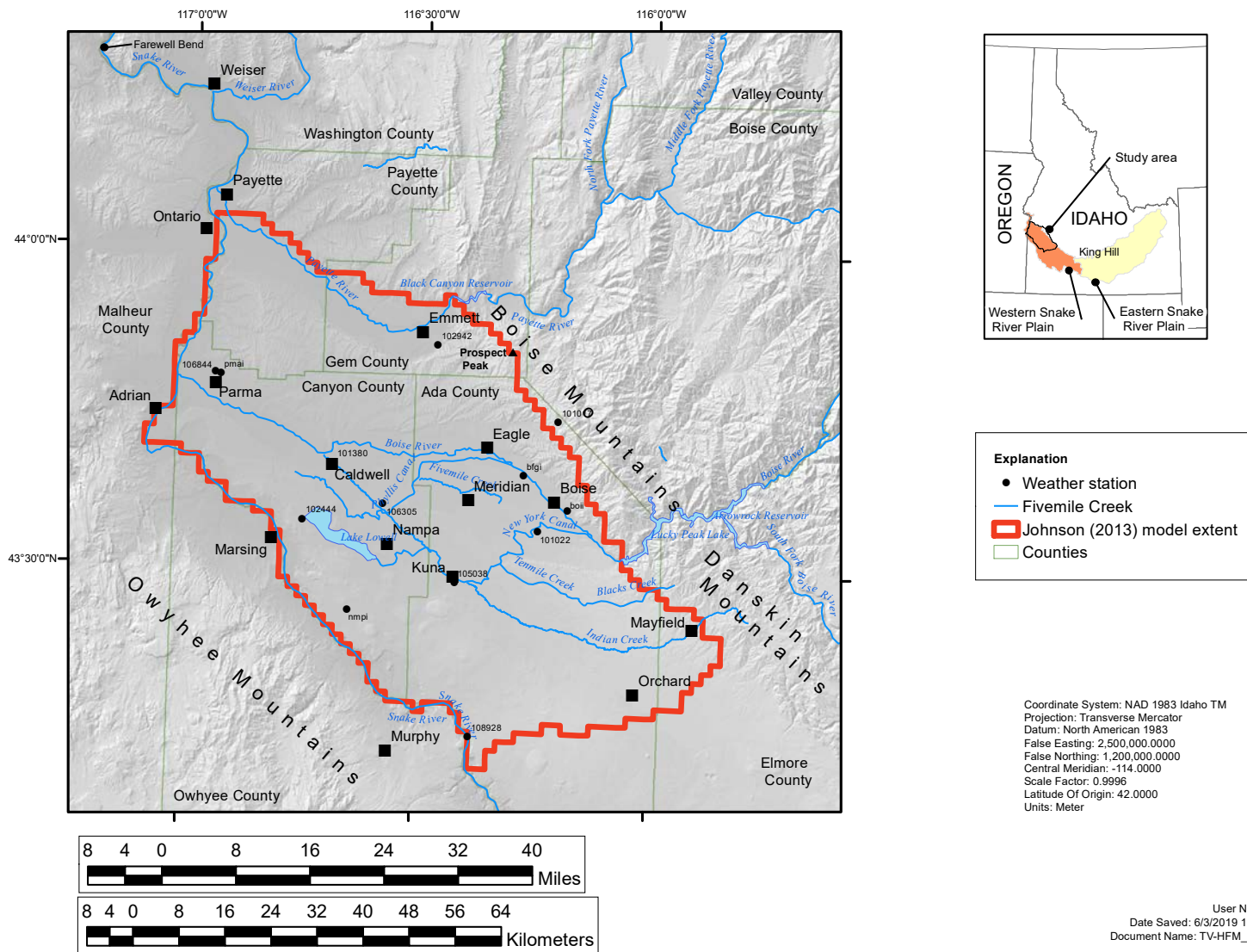




Figure 2.-- Graph showing Palmer drought severity index for Idaho climate zone 5 (Southwestern Valleys).

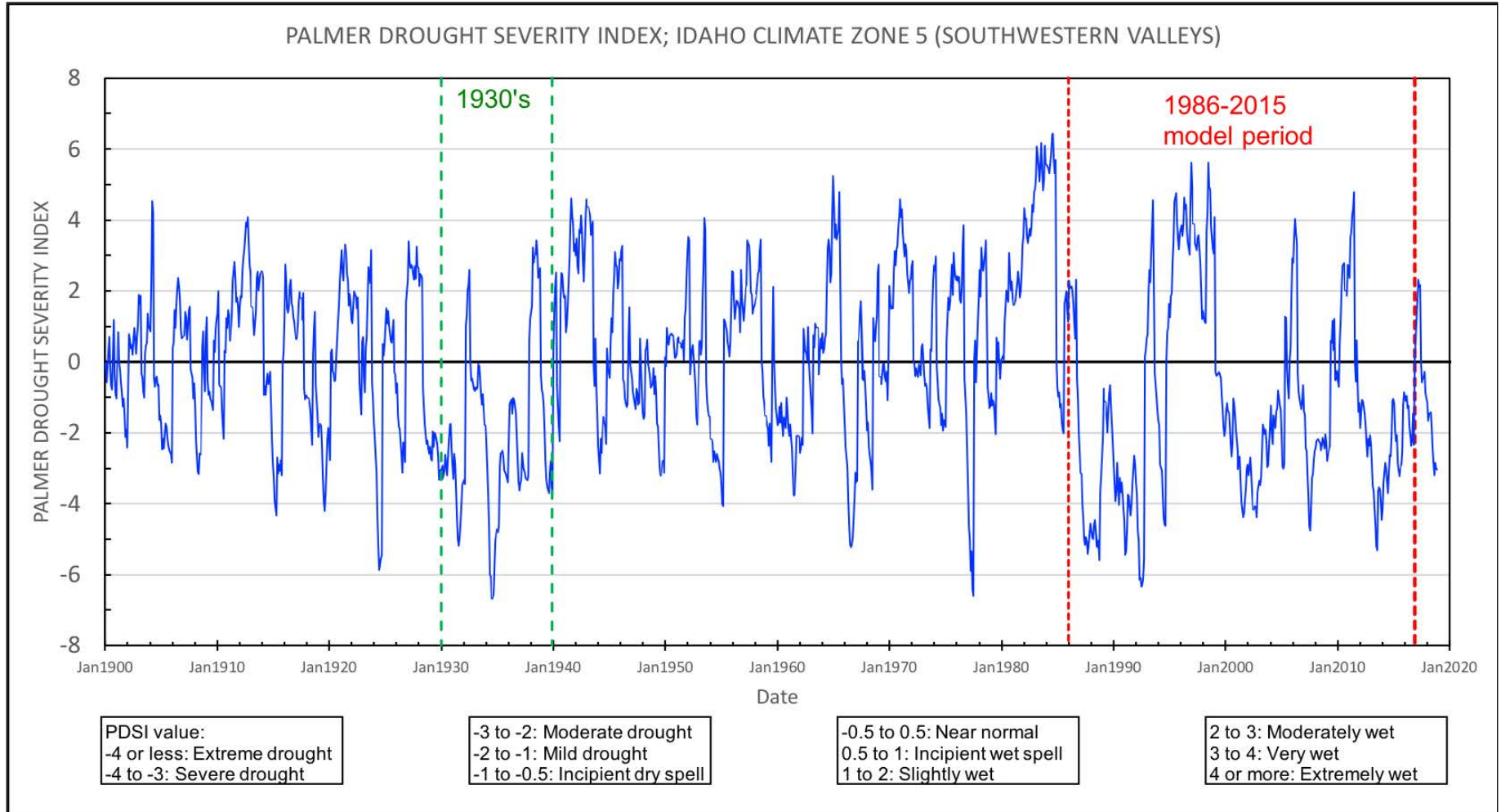


Figure 3.--□ Map showing boundaries of selected groundwater models, western Snake River Plain, southwestern Idaho

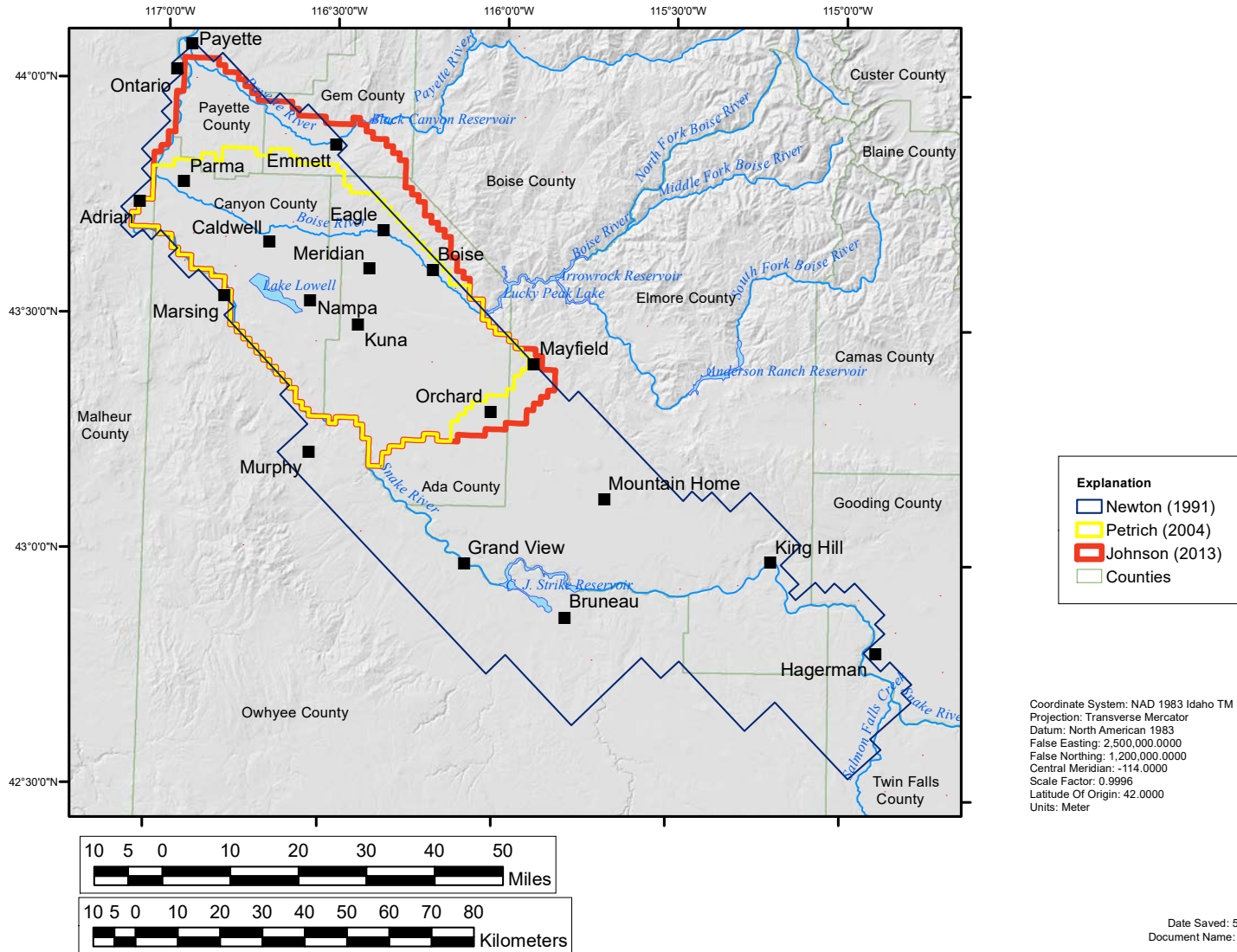
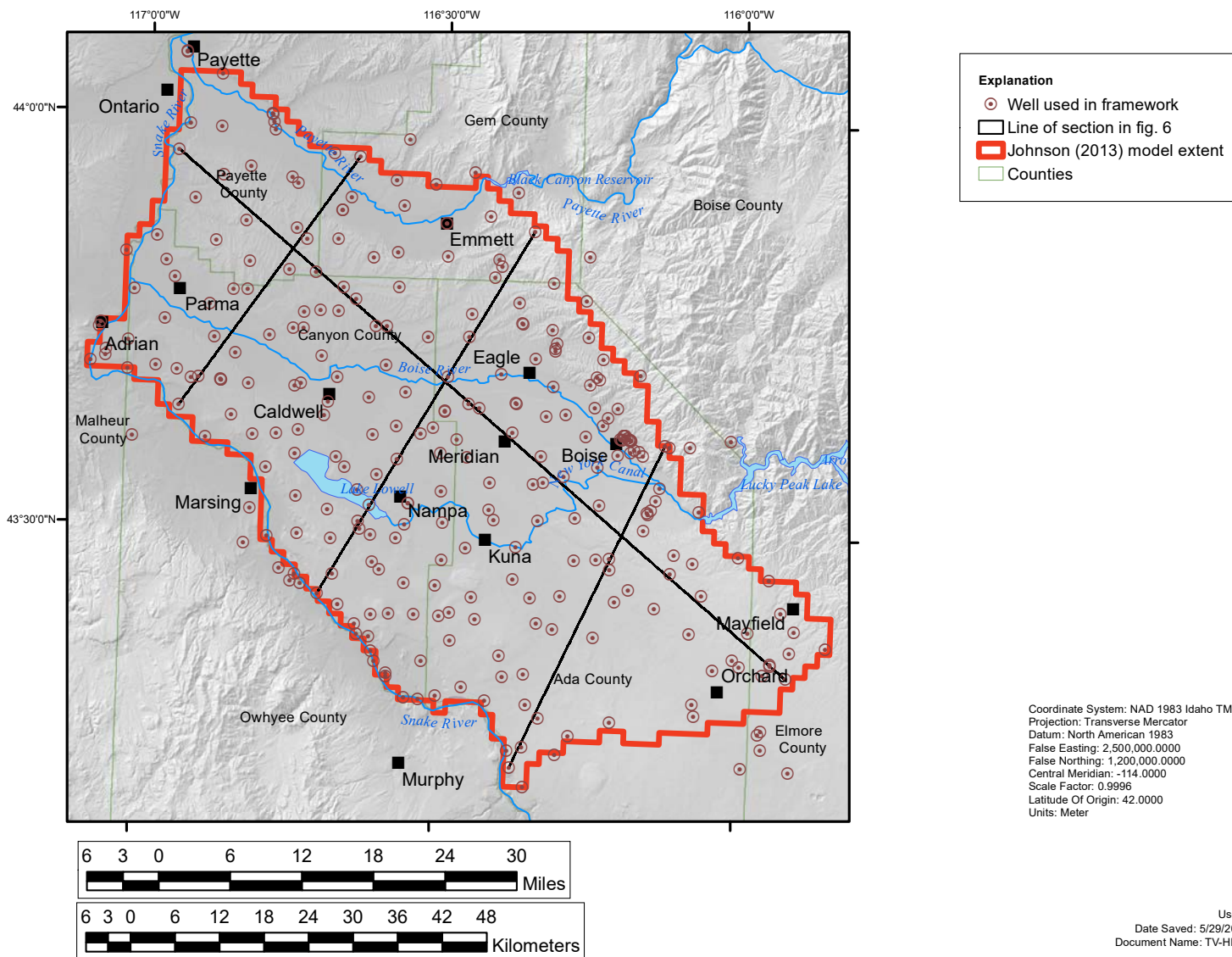
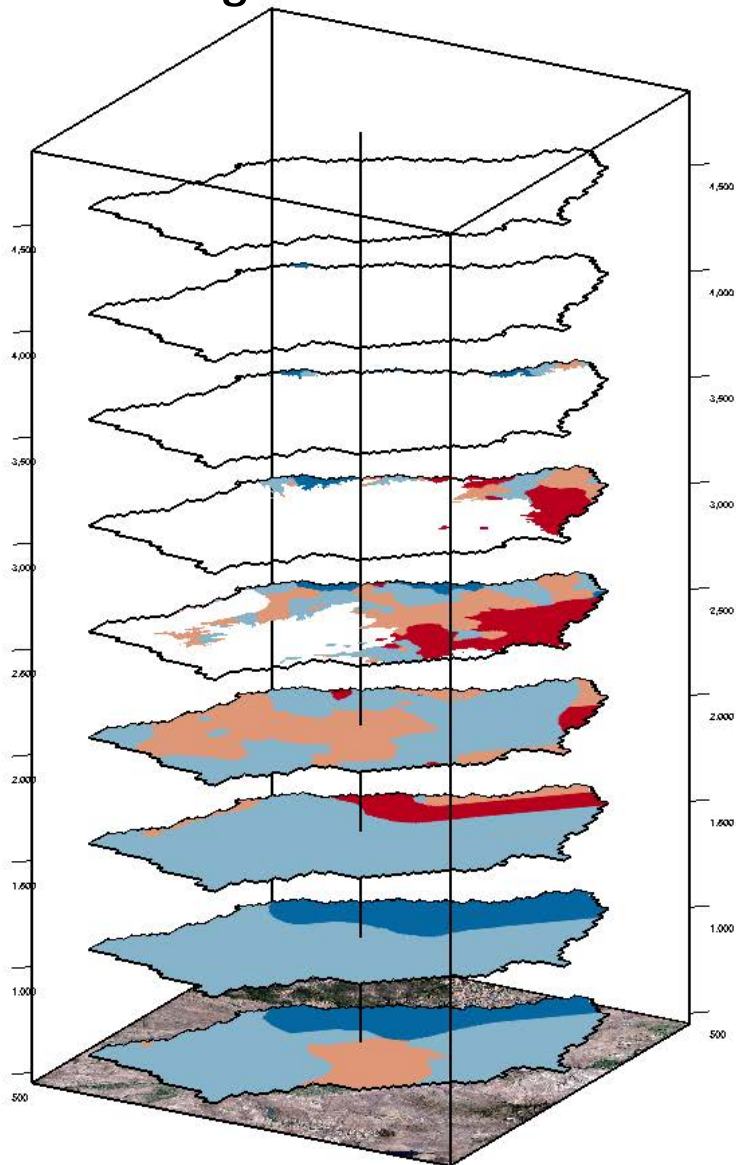


Figure 4.--□ Map showing wells used to generate the three-dimensional hydrogeologic framework model, western Snake River Plain, southwestern Idaho



User Name: jr bartol  
 Date Saved: 5/29/2019 5:48:11 PM  
 Document Name: TV-HFM\_Fig4\_Wells

Figure 5. Perspective view of horizontal slices at 500-ft intervals through the three-dimensional hydrogeologic framework model



Explanation

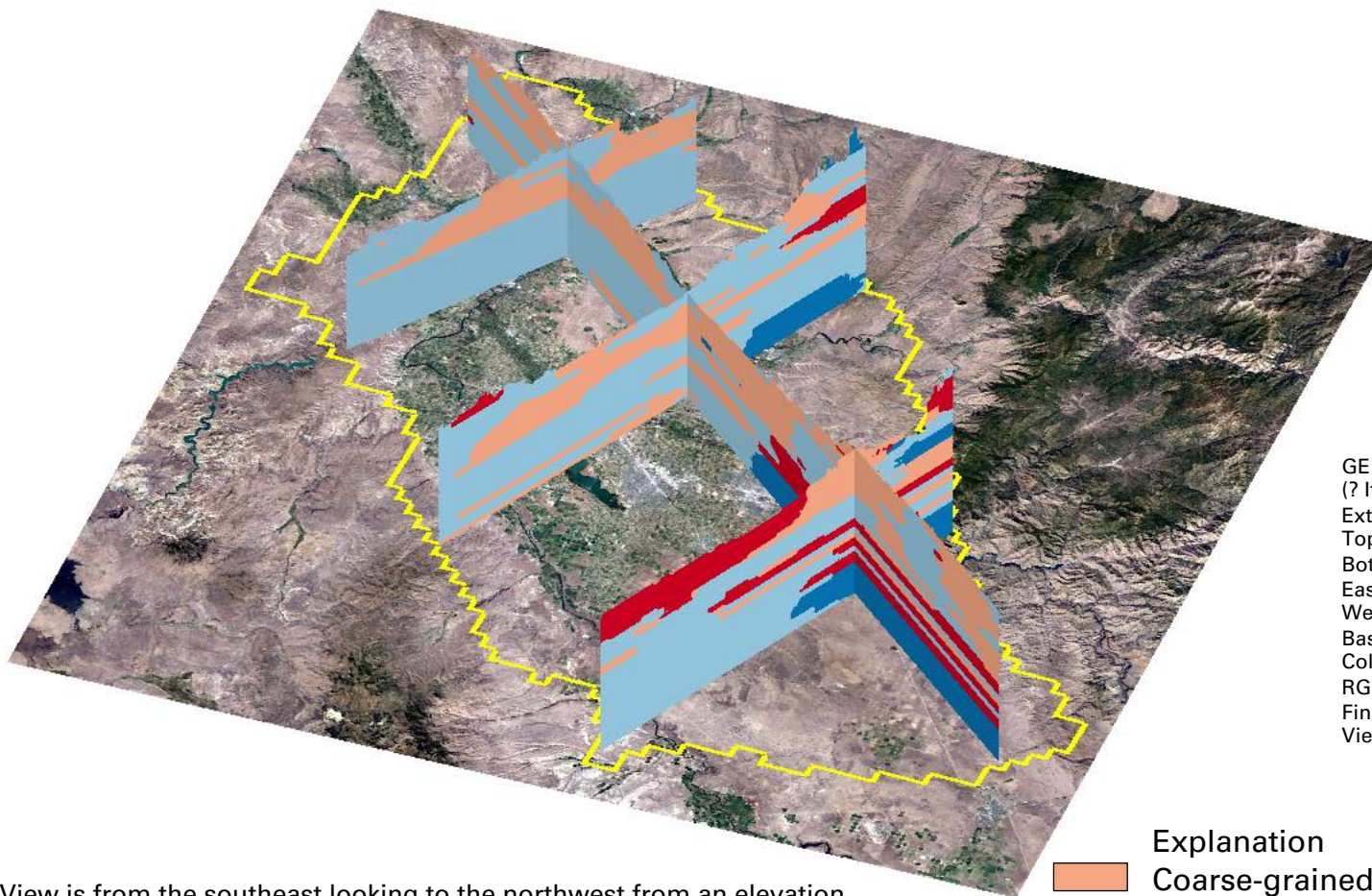
- Coarse-grained fluvial and alluvial deposits
- Basalt, undifferentiated: includes Pliocene-Pleistocene and Miocene basalts
- Fine-grained lacustrine deposits
- Granitic and rhyolitic bedrock

View is from the southwest looking to the northeast from an elevation of 20 degrees above the horizon. Vertical exaggeration is 50 times. Horizontal and vertical scale is variable owing to the effects of perspective view. Colors may appear variable owing to the effects of illumination from above and southeast.

GE imagery date: 12/30/2016  
 (? It's pretty green for Dec)  
 Extent of GE image:  
 Top: 1,463,484 m  
 Bottom: 1,311,364 m  
 East: 2,372,439 m  
 West: 2,221,494 m  
 Base: 500 ft / Top: 4,500 ft  
 Colors are colorblind safe from Colorbrewer,  
 RGB: Basalt 202,0,32; Coarse 244,165,130;  
 Fine 146,197,222; BRK 5,113,176  
 View: 240/20 degrees, 50X VE



Figure 6. Perspective view of vertical cross sections of the three-dimensional hydrogeologic framework model



GE imagery date: 12/30/2016  
 (? It's pretty green for Dec)  
 Extent of GE image:  
 Top: 1,463,484 m  
 Bottom: 1,311,364 m  
 East: 2,372,439 m  
 West: 2,221,494 m  
 Base: 500 ft / Top: 4,800 ft  
 Colors are colorblind safe from Colorbrewer,  
 RGB: Basalt 202,0,32; Coarse 244,165,130;  
 Fine 146,197,222; BRK 5,113,176  
 View: 160/40 degrees 7X

Explanation

- Coarse-grained fluvial and alluvial deposits
- Basalt, undifferentiated: includes Pliocene-Pleistocene and Miocene basalts
- Fine-grained lacustrine deposits
- Granitic and rhyolitic bedrock

View is from the southeast looking to the northwest from an elevation of 40 degrees above the horizon. Vertical exaggeration is 5 times. Horizontal and vertical scale is variable owing to the effects of perspective view. Colors appear variable owing to the effects of illumination from above and southeast. Lines of section are shown on figure 4.

# Geologic time scale and history

Geologic time			Geologic history
Era	Period	Series	
Cenozoic (66 Ma to present)	Quaternary (2.6 Ma to Present)	Holocene (11,700 y to present)	Current landscape
		Pleistocene (2.6 Ma to 11,700 y)	Bonneville flood (15-14.5 ka) Deposition of Tenmile gravels on dry bed of Lake Idaho (1.7-1.6 Ma) Lake Idaho overflows into the Columbia drainage and begins draining (~2-1.7 Ma)
	Tertiary (66 to 2.6 Ma)	Pliocene (5.3 to 2.6 Ma)	Resumption of basalt volcanism (2.2-0.1 Ma) Lake Idaho forms (4 Ma) Unconformity
		Miocene (23 to 5.3 Ma)	Chalk Hills Lake drains (~6-5 Ma) Chalk Hills Lake forms (~10-8 Ma) Main episode of WSRP faulting (11-9 Ma)
		Oligocene (34 to 23 Ma)	Eruption of Jump Creek rhyolite (11.7-10.6 Ma) OR-ID graben and Weiser embayment form; deposition of Sucker Crk Fm (~15.5 Ma) Eruption of Lower Columbia River Basalts (16.9-15.6 Ma)
		Eocene (56 to 34 Ma)	
		Paleocene (66 to 56 Ma)	
Mesozoic (251 to 66 Ma)	Cretaceous (~145 to 66 Ma)	Upper/Late (100 to 66 Ma)	Intrusion of Idaho Batholith into older rocks (95-75 Ma)
		Lower/Early (~145 to 100 Ma)	

# Data release

## ❖ Rockworks 17

- Proprietary: SQLite database plus various model and graphics files (.RwGrd, .Rw2D, .Rw3D, .RwMod)
- Can export data to .txt, .dbf, .mdb, or .xlsx
- Can export graphics to standard image formats (including videos) but can't manipulate views of model
- Can export slices or surfaces to shapefiles or .kml

## ❖ Other 3D HFM data releases

- Rio Grande: Rockworks17 -> shapefiles and geodatabases
- Santa Cruz (AZ): EarthVision -> Earthvision proprietary files, .txt, GeoTIFFs, video, EarthVision DemoViewer

## ❖ Proposed

- RW17, .txt and .xlsx, shapefiles, and graphic and video files