

Preliminary diversion data and water service areas

Presented to the Treasure Valley Modeling Technical Advisory
Committee

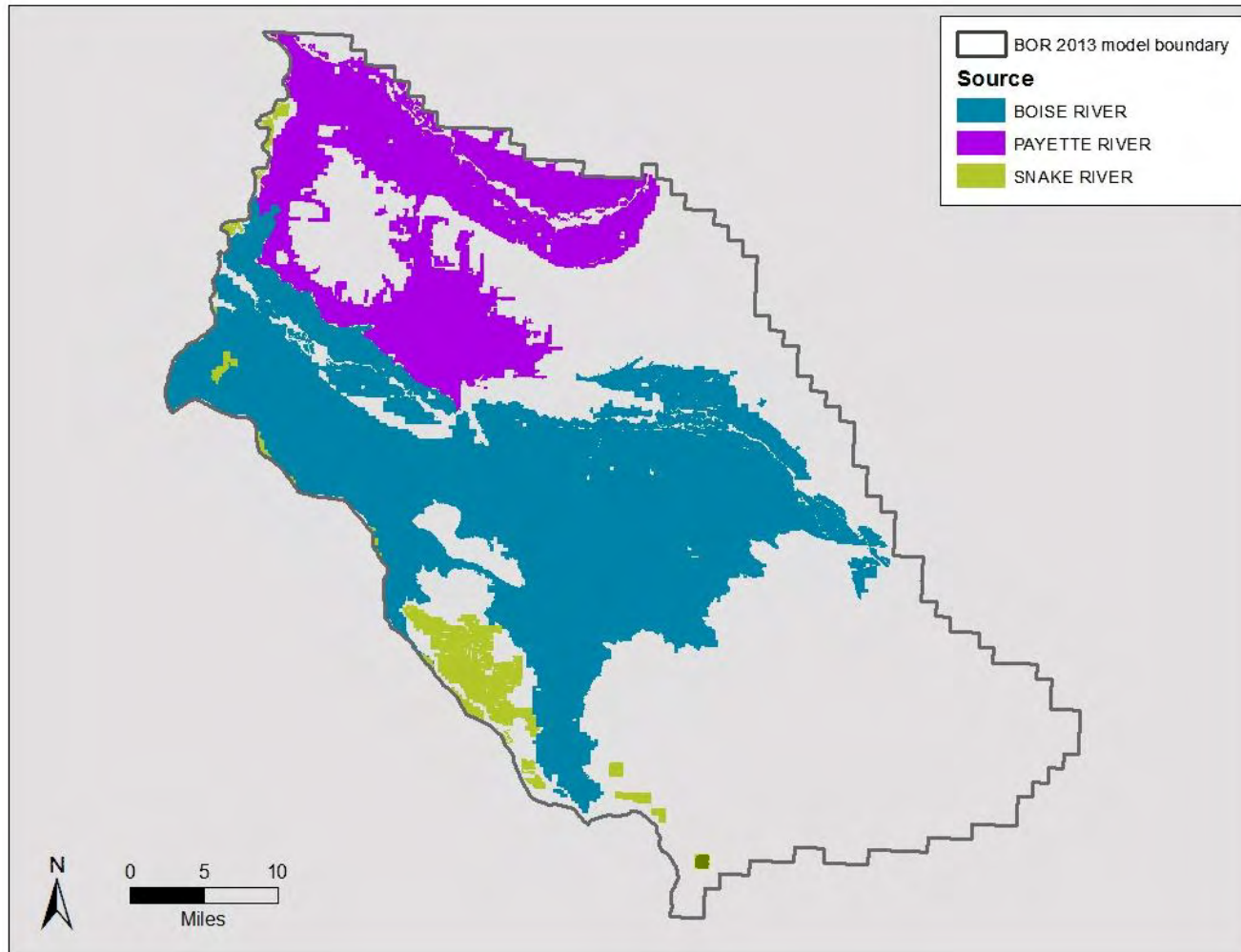
Jennifer Sukow, P.E., P.G.

March 1, 2018

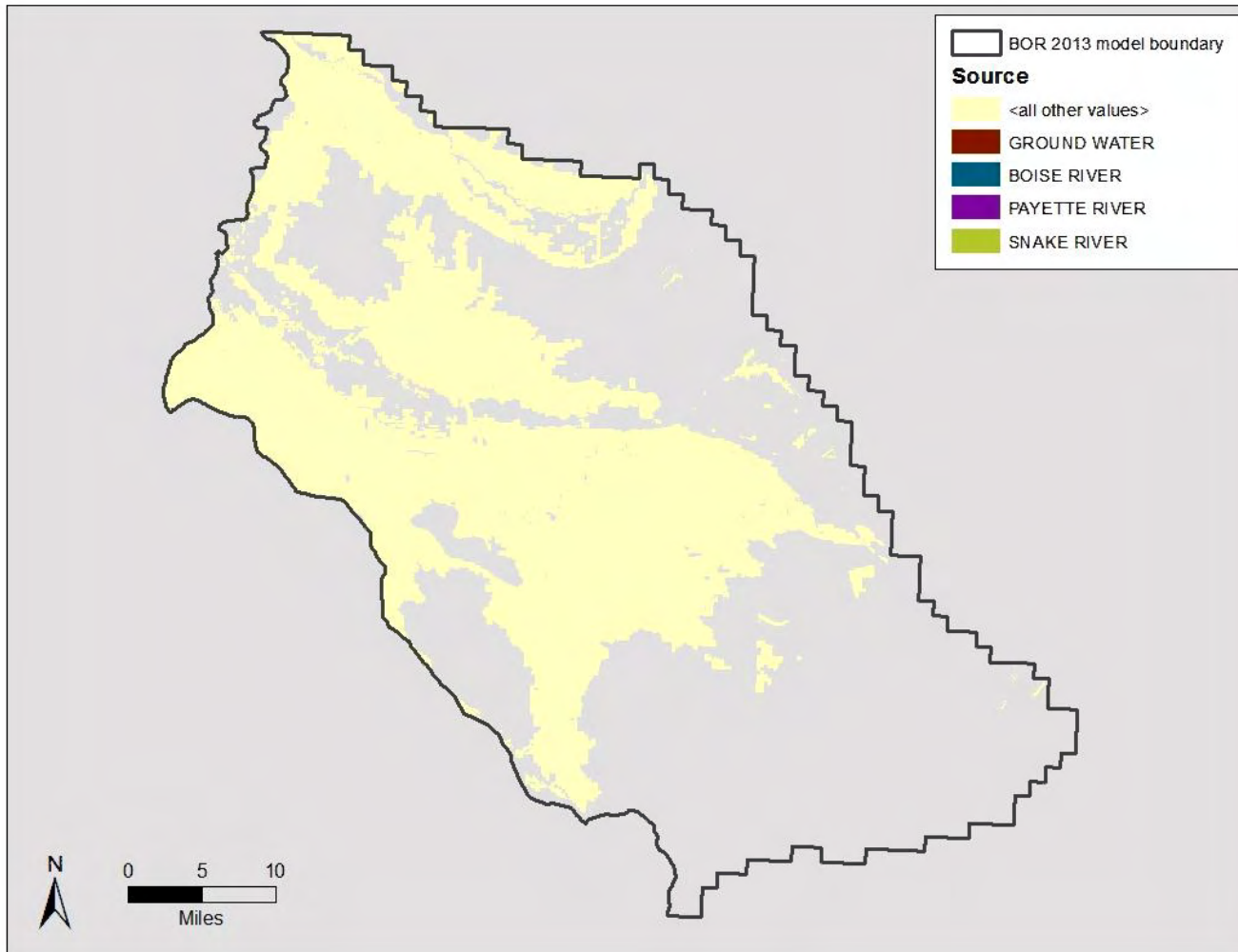
Overview

- Water sources
 - Boise, Payette, and Snake Rivers
 - Drains
 - Tributary streams
 - Groundwater
- Water service areas
 - Canal system service areas
 - Municipal service areas
 - Local surface diversions
 - Local groundwater diversions
- River diversion records
- Pending action items

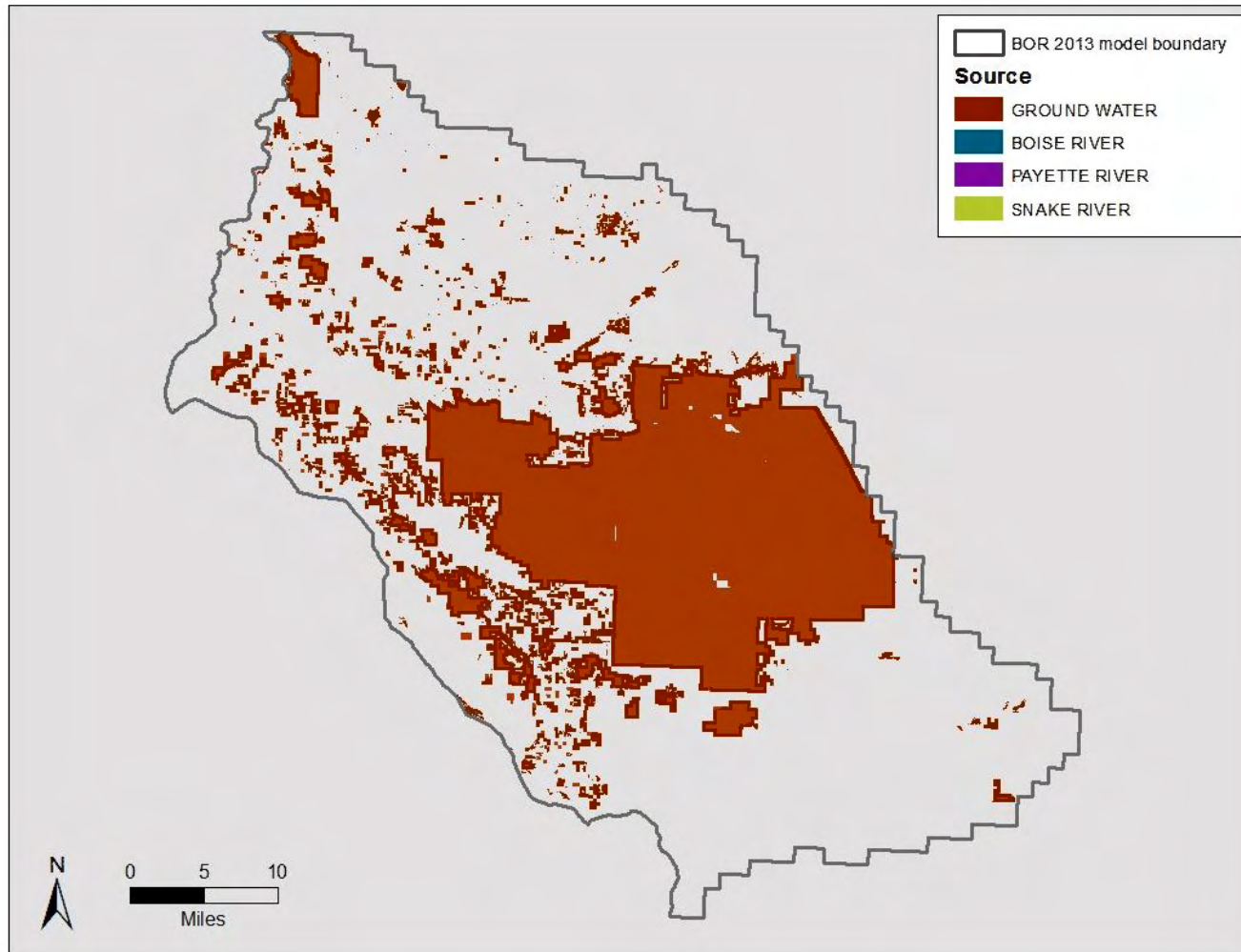
Water sources, major rivers



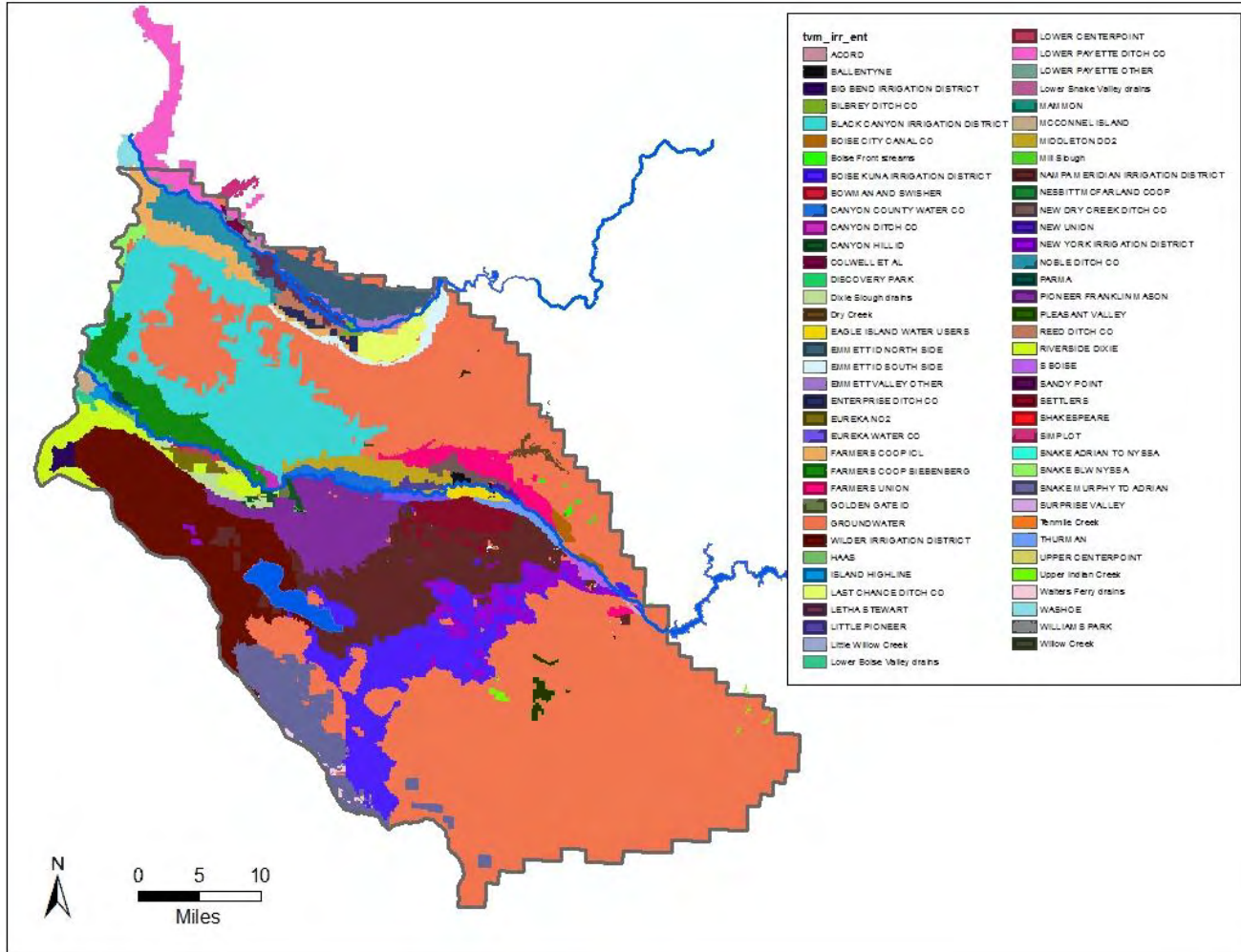
Water sources, drains and tributary streams



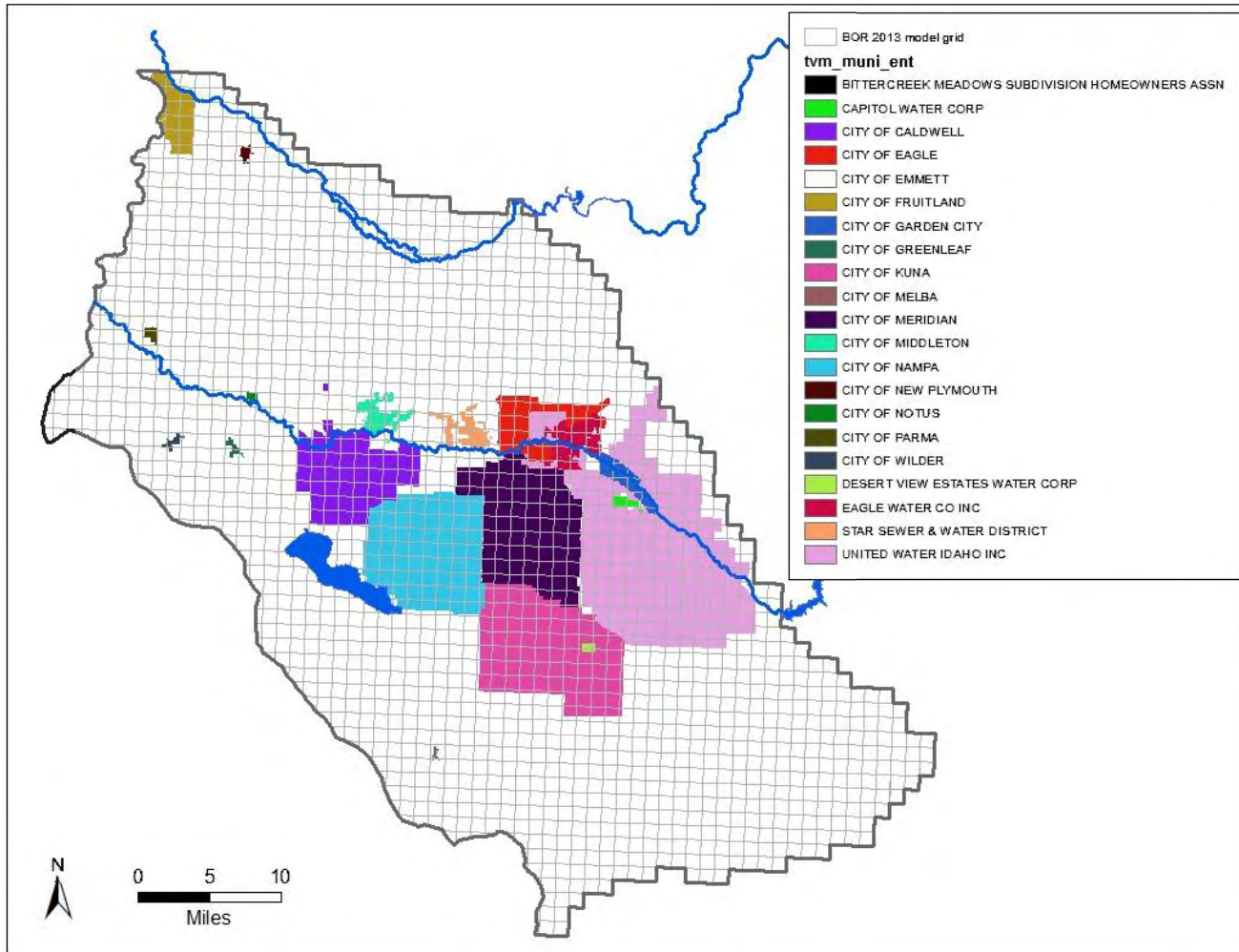
Water sources, groundwater



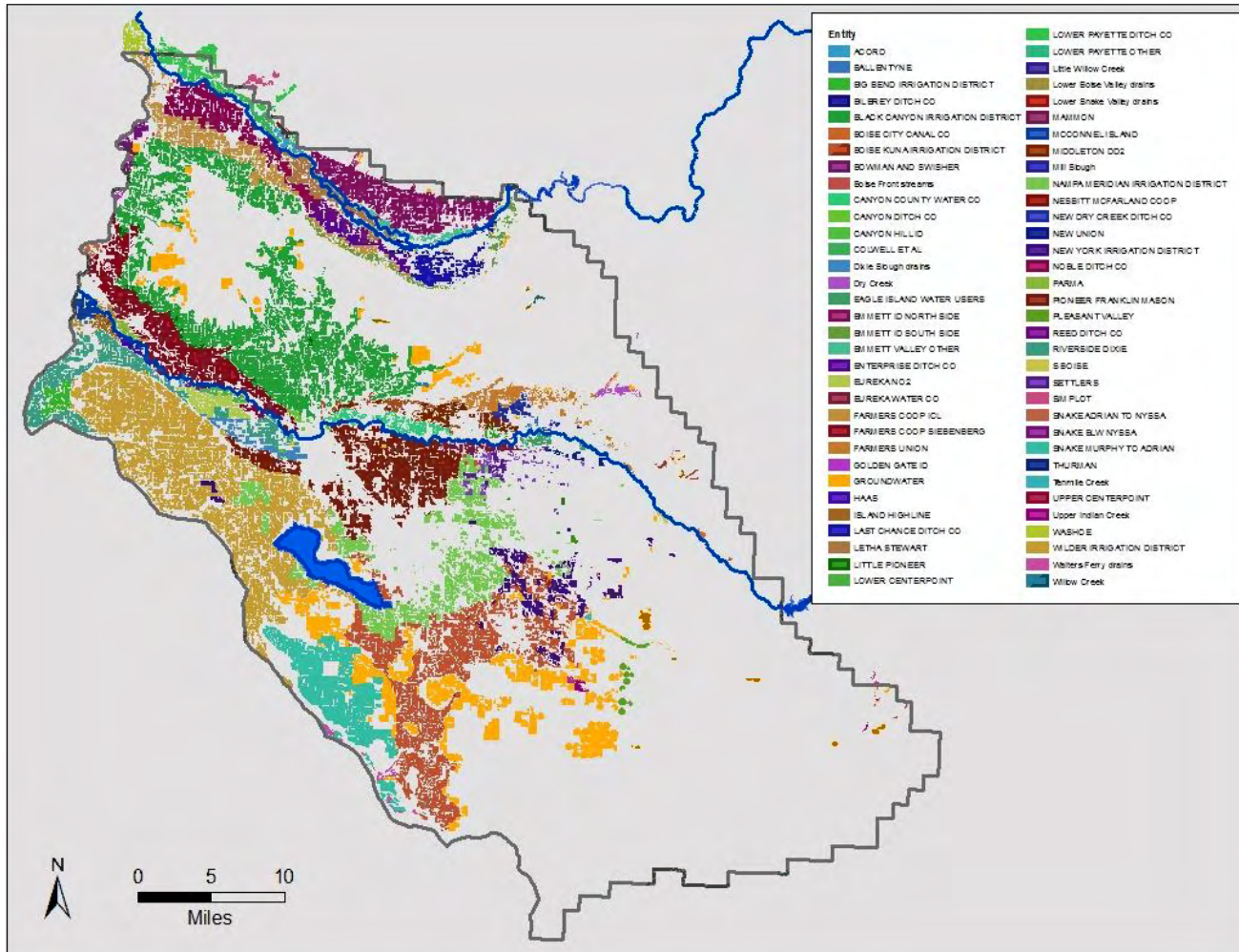
Irrigation service areas



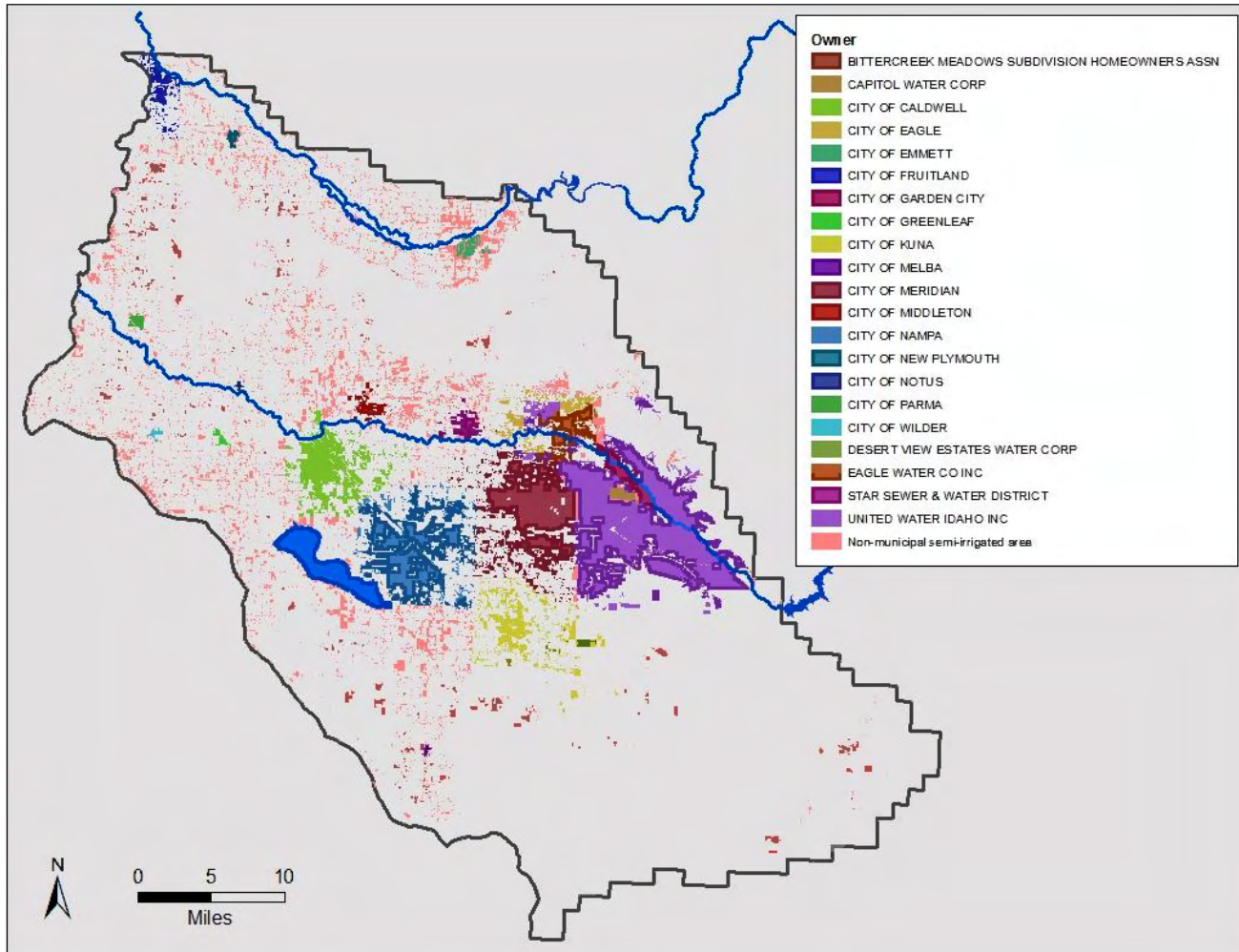
Municipal service areas



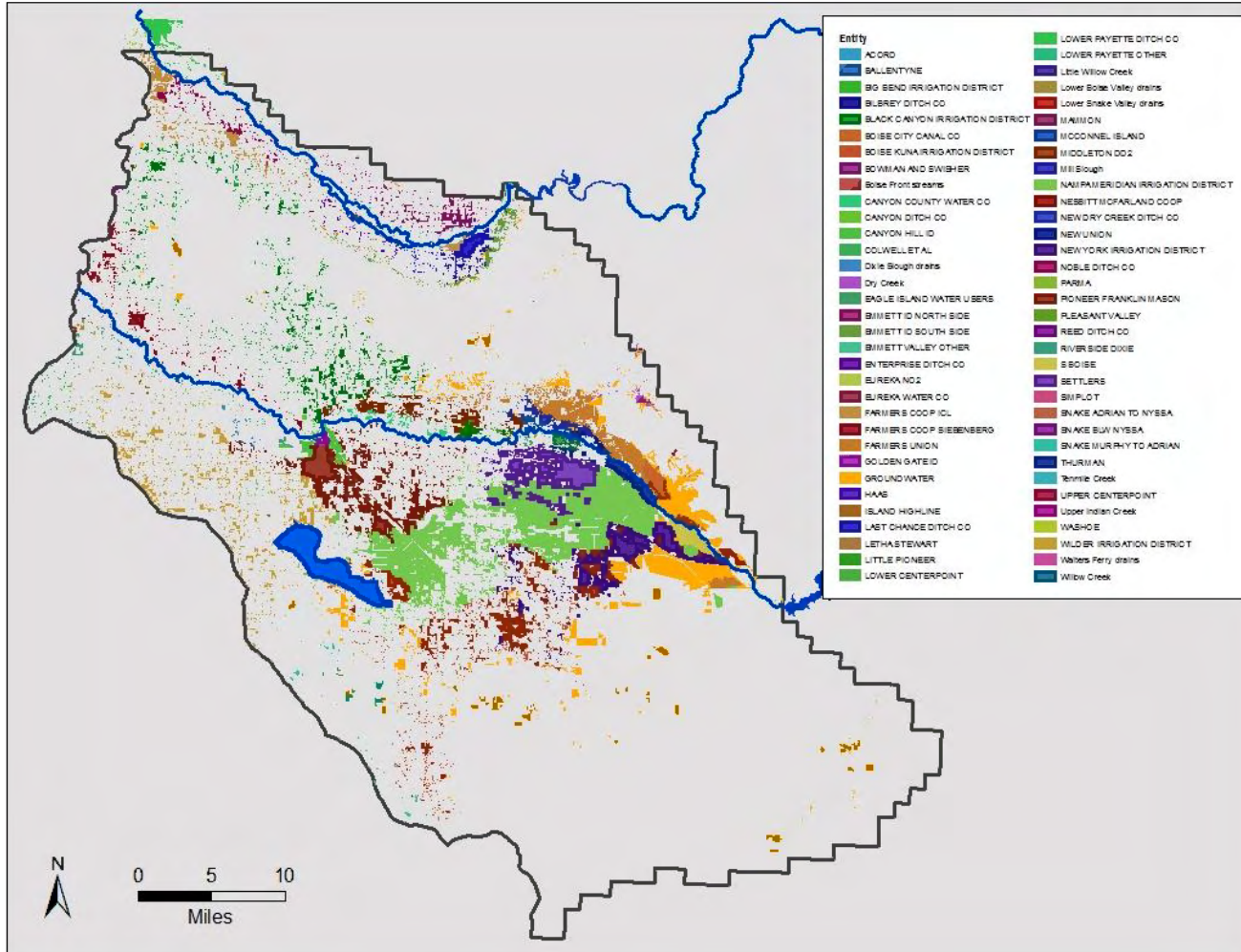
2015 irrigated lands by irrigation service area



2015 semi-irrigated lands by municipal service area

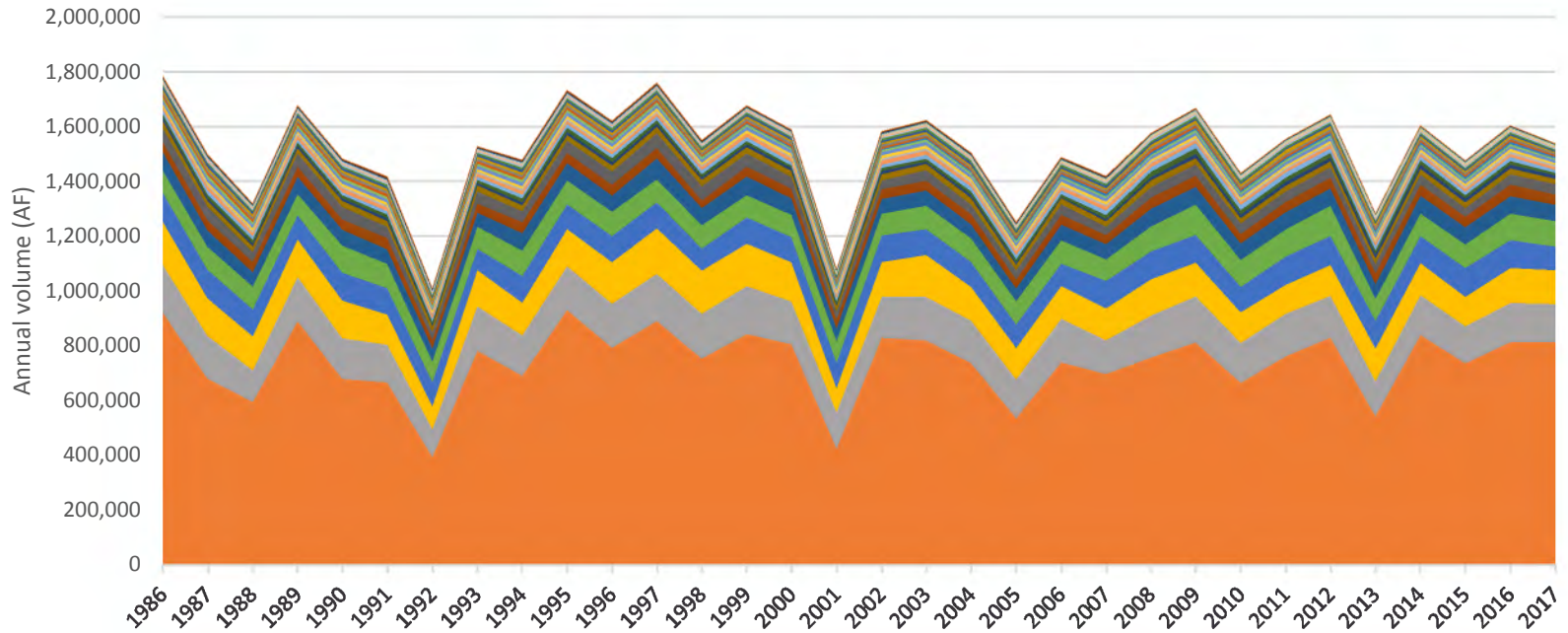


2015 semi-irrigated lands by irrigation service area



Boise River diversions

Boise River diversions



- | | | | | |
|----------------------|-----------------------------|--------------------------|---------------------------|-----------------------|
| ■ BOISE PROJECT | ■ NAMPA MERIDIAN ID | ■ PIONEER FRANKLIN MASON | ■ FARMERS COOP SIEBENBERG | ■ RIVERSIDE DIXIE |
| ■ FARMERS UNION | ■ EUREKA #2 | ■ SETTLERS | ■ CANYON COUNTY WATER CO | ■ LOWER CENTER POINT |
| ■ ISLAND HIGHLINE | ■ MCCONNELL ISLAND | ■ NEW DRY CREEK DITCH CO | ■ NONCONSUMPTIVE | ■ EUREKA WATER CO |
| ■ THURMAN | ■ EAGLE ISLAND WATER USERS | ■ SUEZ WATER | ■ LITTLE PIONEER | ■ BOISE CITY CANAL CO |
| ■ PARMA | ■ CANYON DITCH CO | ■ UPPER CENTER POINT | ■ BALLENTYNE DITCH CO | ■ S BOISE |
| ■ HAAS | ■ SURPRISE VALLEY MICRON | ■ MIDDLETON DD2 | ■ MAMMON | ■ NEW UNION DITCH CO |
| ■ BOWMAN AND SWISHER | ■ GOLDEN GATE ID | ■ WILLIAMS PARK | ■ DISCOVERY | ■ SHAKESPEARE |
| ■ SANDY POINT | ■ UNDIVERTED FOR MITIGATION | | | |

Pending action items

- Compile available groundwater diversion data and request additional data from municipal systems
- Refine municipal service areas
- Estimate fraction of ET within municipal service areas supported by irrigation districts and individual wells
- Request data regarding distribution of New York Canal water among irrigation districts
- Request data regarding diversions from drains