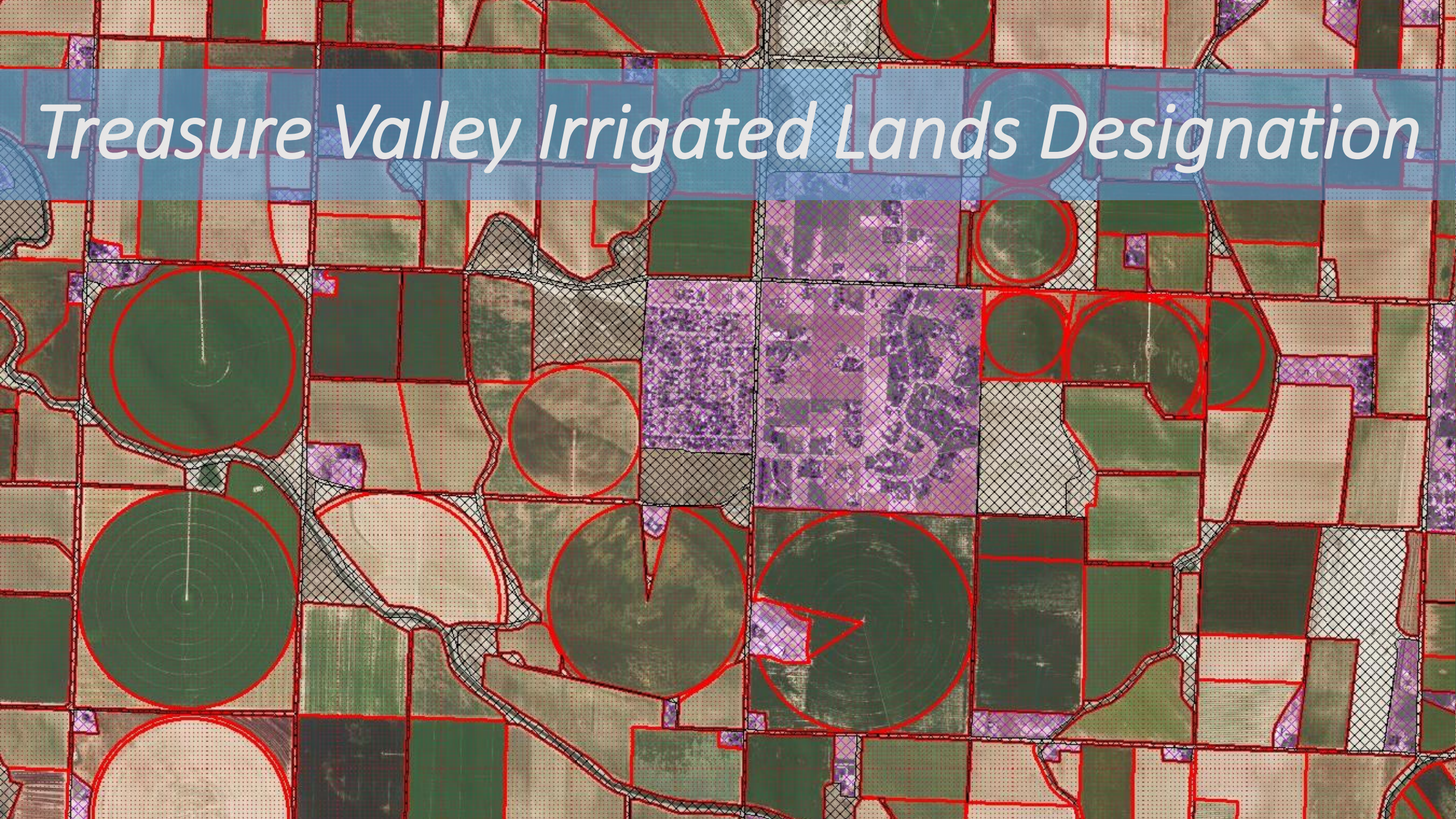


# *Treasure Valley Irrigated Lands Designation*



# *What is the Irrigated Lands Designation Dataset?*

An aerial photograph of agricultural land, likely in a valley, overlaid with a GIS layer. The map shows various land use patterns, including large circular irrigation wheels (center pivots) and rectangular fields. The GIS layer uses different colors and patterns to designate land: green for some fields, blue for others, purple for certain areas, and a cross-hatch pattern for others. Red lines delineate the boundaries of these designated areas.

- GIS Layer delineates all land use in the Valley and designates irrigated lands in a given year*
- Used in conjunction with METRIC ET data to determine ET coming from irrigated lands vs natural or non-irrigated ET*

*8 Years of data across a 30 year span to be digitized*

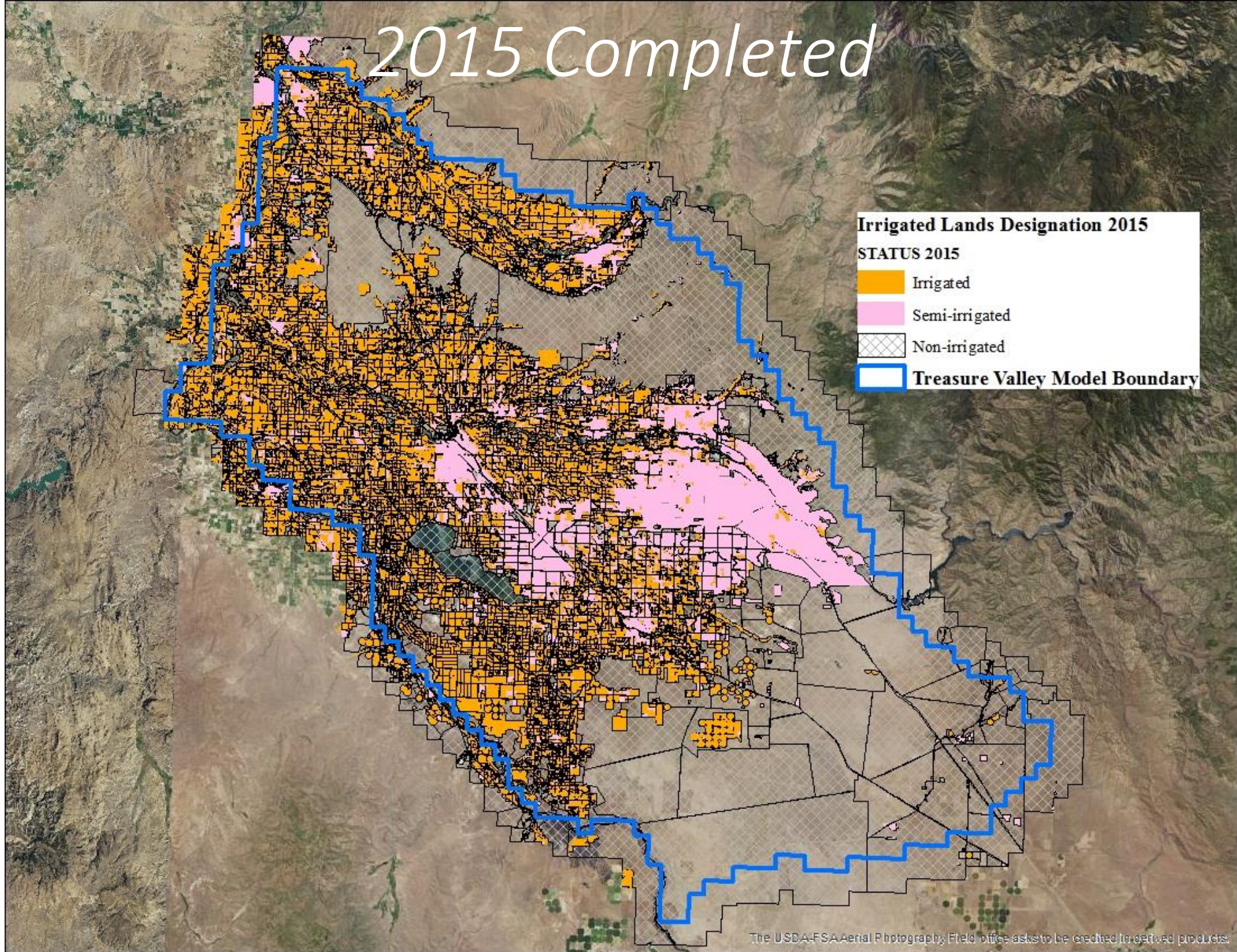
*1987, 1994, 1997, 2000, 2004, 2007, 2010, 2015*



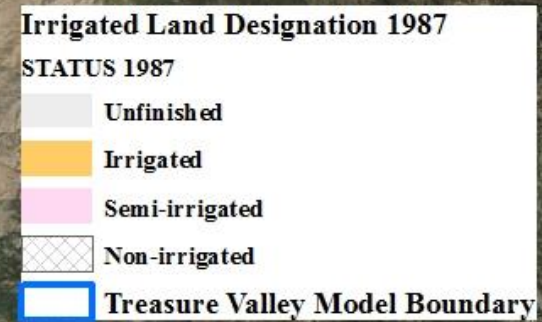
2015 Completed

**Irrigated Lands Designation 2015**  
**STATUS 2015**

-  Irrigated
-  Semi-irrigated
-  Non-irrigated
-  **Treasure Valley Model Boundary**



# 1987 In Process

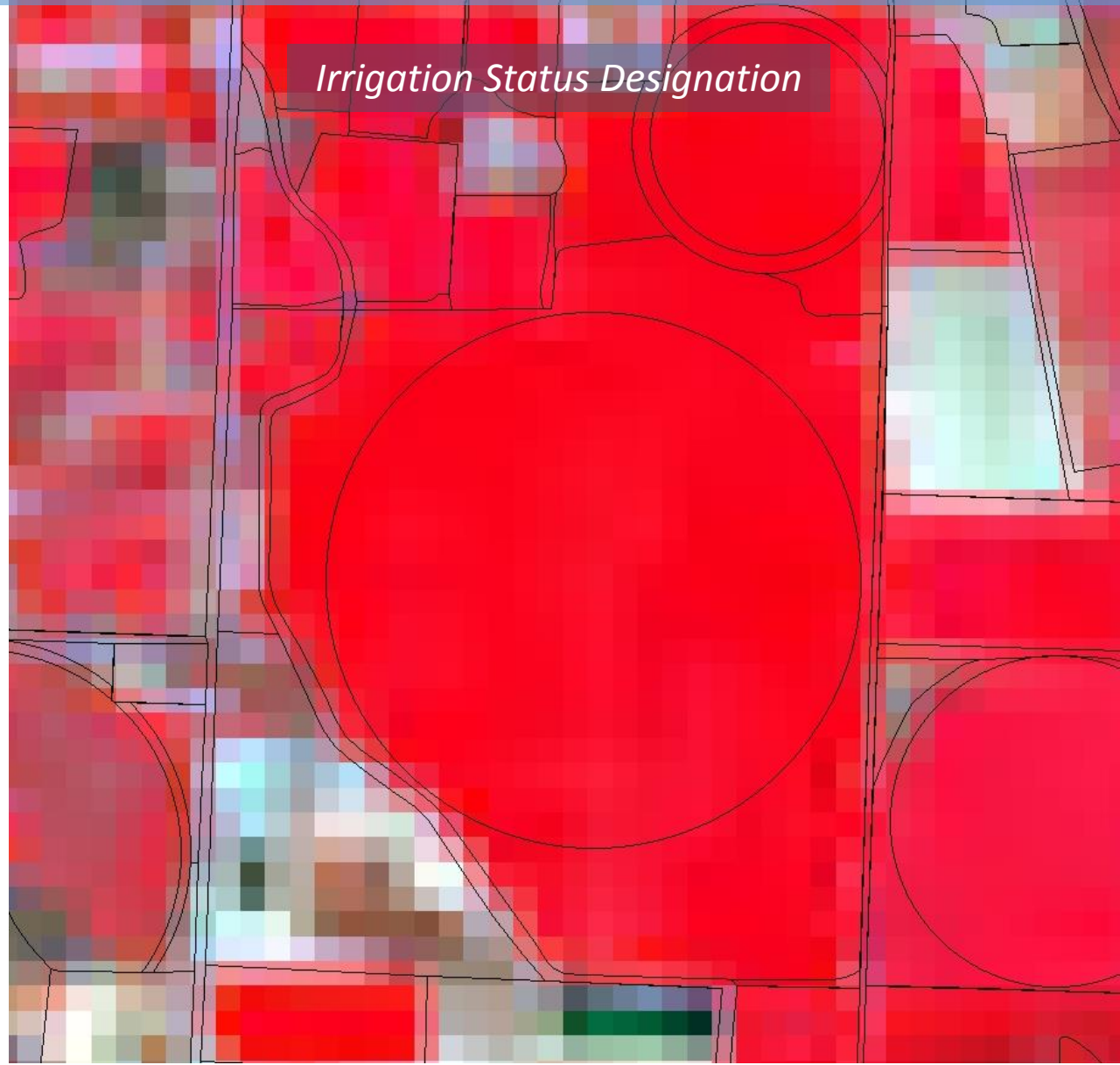


# *Two primary components to the process*

*Land Use Delineation*



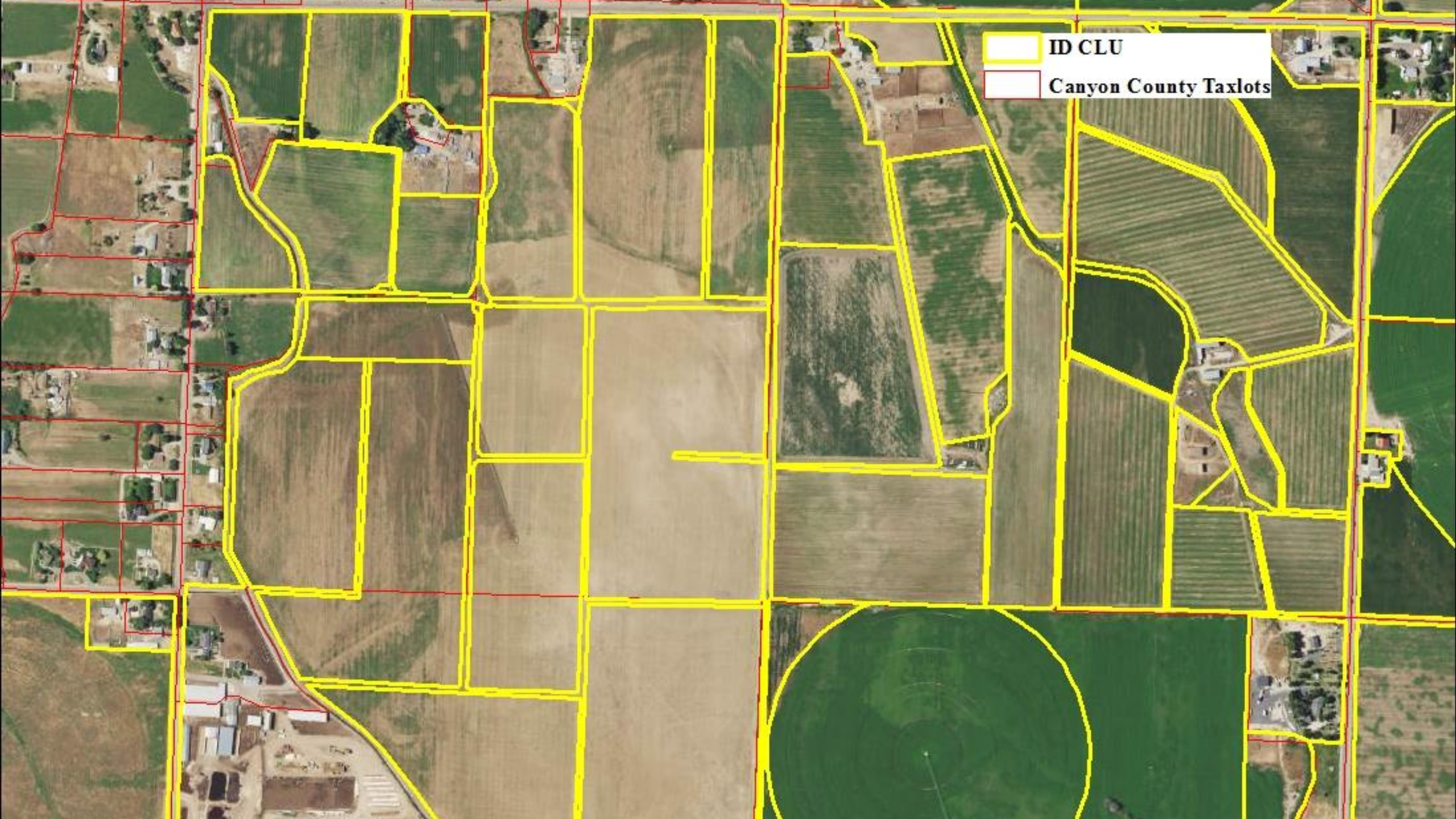
*Irrigation Status Designation*



An aerial photograph of agricultural land. The image is overlaid with a semi-transparent blue box at the top containing the title 'Land Use Delineation'. Below the title, there is a semi-transparent grey box containing a bulleted list of steps. The background shows various agricultural fields, some with yellow outlines and some with red outlines, indicating different land use types or boundaries. A large circular field is visible in the bottom right corner.

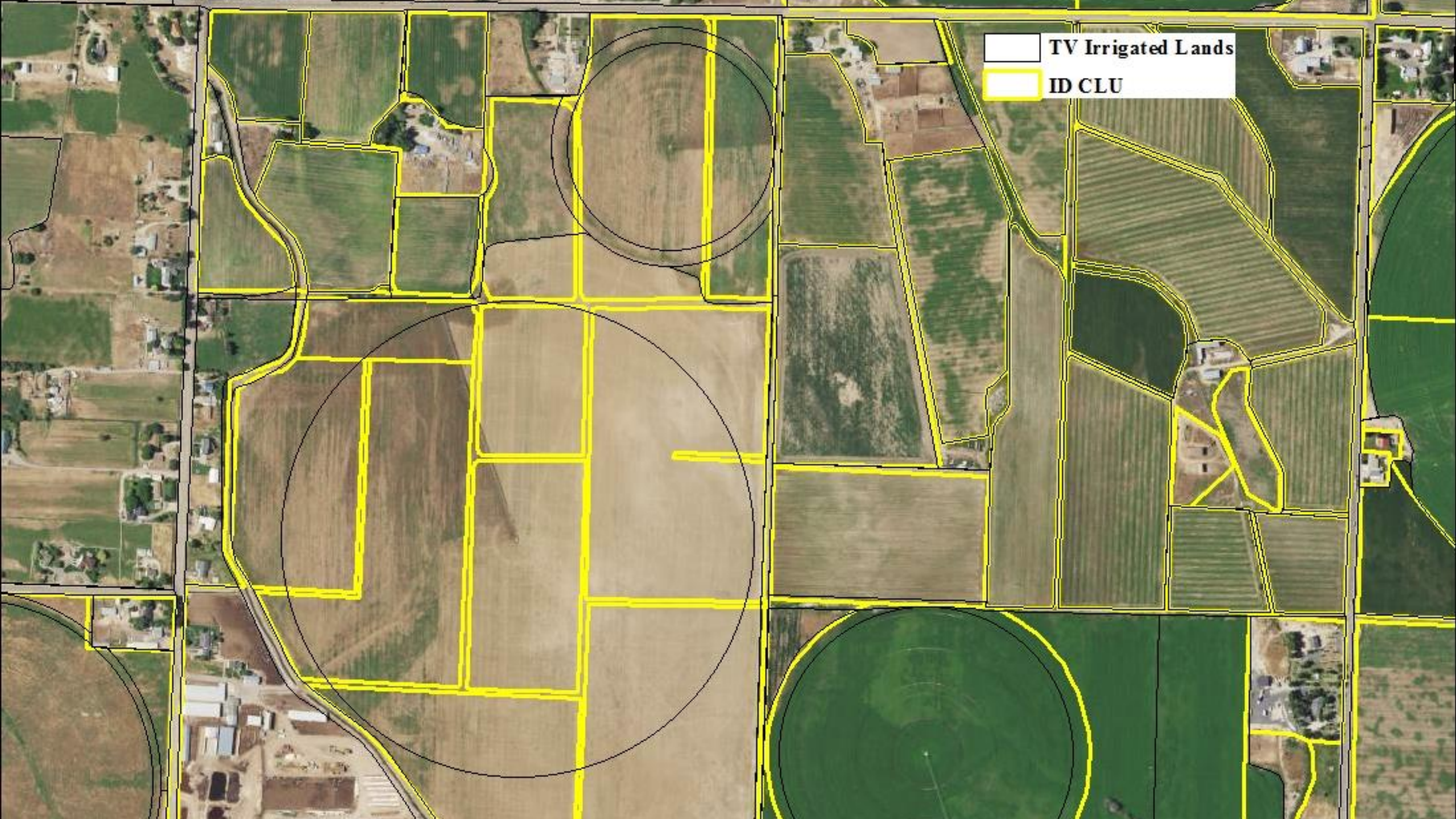
# Land Use Delineation

- *Gather pertinent data*
  - *NAIP or other aerial Imagery*
  - *FSA Common Land Use (CLU) data*
  - *Tax lot data*
- *Digitize line work delineation based on land use type*



■ ID CLU  
■ Canyon County Taxlots





TV Irrigated Lands  
ID CLU

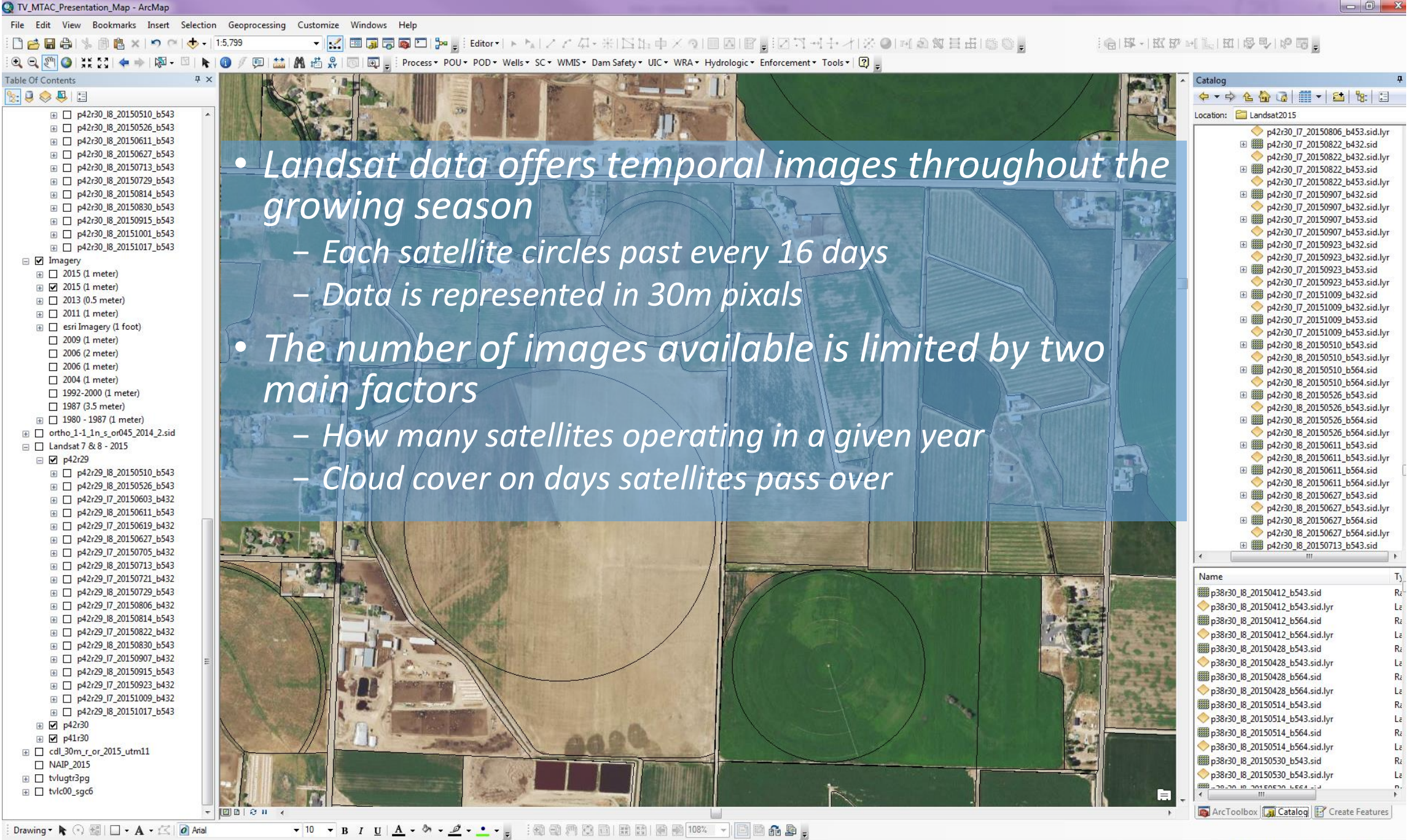
TV Irrigated Lands





# *Irrigation Status Designation*

- Landsat Imagery (LS 7 and LS 8 for 2015)*
- USDA Cropland Data Layer (CDL)*
- Active Water Rights data*



- *Landsat data offers temporal images throughout the growing season*
  - *Each satellite circles past every 16 days*
  - *Data is represented in 30m pixals*
- *The number of images available is limited by two main factors*
  - *How many satellites operating in a given year*
  - *Cloud cover on days satellites pass over*

Table Of Contents

- p42r30\_i8\_20150510\_b543
- p42r30\_i8\_20150526\_b543
- p42r30\_i8\_20150611\_b543
- p42r30\_i8\_20150627\_b543
- p42r30\_i8\_20150713\_b543
- p42r30\_i8\_20150729\_b543
- p42r30\_i8\_20150814\_b543
- p42r30\_i8\_20150830\_b543
- p42r30\_i8\_20150915\_b543
- p42r30\_i8\_20151001\_b543
- p42r30\_i8\_20151017\_b543
- Imagery
  - 2015 (1 meter)
  - 2015 (1 meter)
  - 2013 (0.5 meter)
  - 2011 (1 meter)
  - esri Imagery (1 foot)
  - 2009 (1 meter)
  - 2006 (2 meter)
  - 2006 (1 meter)
  - 2004 (1 meter)
  - 1992-2000 (1 meter)
  - 1987 (3.5 meter)
  - 1980 - 1987 (1 meter)
  - ortho\_1-1\_1n\_s\_or045\_2014\_2.sid
  - Landsat 7 & 8 - 2015
  - p42r29
    - p42r29\_i8\_20150510\_b543
    - p42r29\_i8\_20150526\_b543
    - p42r29\_i7\_20150603\_b432
    - p42r29\_i8\_20150611\_b543
    - p42r29\_i7\_20150619\_b432
    - p42r29\_i8\_20150627\_b543
    - p42r29\_i7\_20150705\_b432
    - p42r29\_i8\_20150713\_b543
    - p42r29\_i7\_20150721\_b432
    - p42r29\_i8\_20150729\_b543
    - p42r29\_i7\_20150806\_b432
    - p42r29\_i8\_20150814\_b543
    - p42r29\_i7\_20150822\_b432
    - p42r29\_i8\_20150830\_b543
    - p42r29\_i7\_20150907\_b432
    - p42r29\_i8\_20150915\_b543
    - p42r29\_i7\_20150923\_b432
    - p42r29\_i7\_20151009\_b432
    - p42r29\_i8\_20151017\_b543
  - p42r30
    - p41r30
  - cdl\_30m\_r\_or\_2015\_utm11
  - NAIP\_2015
  - tvlugtr3pg
  - tvlc00\_sgc6

Catalog

Location: Landsat2015

- p42r30\_i7\_20150806\_b453.sid.lyr
- p42r30\_i7\_20150822\_b432.sid
- p42r30\_i7\_20150822\_b432.sid.lyr
- p42r30\_i7\_20150822\_b453.sid
- p42r30\_i7\_20150822\_b453.sid.lyr
- p42r30\_i7\_20150907\_b432.sid
- p42r30\_i7\_20150907\_b432.sid.lyr
- p42r30\_i7\_20150907\_b453.sid
- p42r30\_i7\_20150907\_b453.sid.lyr
- p42r30\_i7\_20150923\_b432.sid
- p42r30\_i7\_20150923\_b432.sid.lyr
- p42r30\_i7\_20150923\_b453.sid
- p42r30\_i7\_20150923\_b453.sid.lyr
- p42r30\_i7\_20151009\_b432.sid
- p42r30\_i7\_20151009\_b432.sid.lyr
- p42r30\_i7\_20151009\_b453.sid
- p42r30\_i7\_20151009\_b453.sid.lyr
- p42r30\_i8\_20150510\_b543.sid
- p42r30\_i8\_20150510\_b543.sid.lyr
- p42r30\_i8\_20150510\_b564.sid
- p42r30\_i8\_20150510\_b564.sid.lyr
- p42r30\_i8\_20150526\_b543.sid
- p42r30\_i8\_20150526\_b543.sid.lyr
- p42r30\_i8\_20150526\_b564.sid
- p42r30\_i8\_20150526\_b564.sid.lyr
- p42r30\_i8\_20150611\_b543.sid
- p42r30\_i8\_20150611\_b543.sid.lyr
- p42r30\_i8\_20150611\_b564.sid
- p42r30\_i8\_20150611\_b564.sid.lyr
- p42r30\_i8\_20150627\_b543.sid
- p42r30\_i8\_20150627\_b543.sid.lyr
- p42r30\_i8\_20150627\_b564.sid
- p42r30\_i8\_20150627\_b564.sid.lyr
- p42r30\_i8\_20150713\_b543.sid

Name	Type
p38r30_i8_20150412_b543.sid	Ra
p38r30_i8_20150412_b543.sid.lyr	Le
p38r30_i8_20150412_b564.sid	Ra
p38r30_i8_20150412_b564.sid.lyr	Le
p38r30_i8_20150428_b543.sid	Ra
p38r30_i8_20150428_b543.sid.lyr	Le
p38r30_i8_20150428_b564.sid	Ra
p38r30_i8_20150428_b564.sid.lyr	Le
p38r30_i8_20150514_b543.sid	Ra
p38r30_i8_20150514_b543.sid.lyr	Le
p38r30_i8_20150514_b564.sid	Ra
p38r30_i8_20150514_b564.sid.lyr	Le
p38r30_i8_20150530_b543.sid	Ra
p38r30_i8_20150530_b543.sid.lyr	Le
p38r30_i8_20150530_b564.sid	Ra
p38r30_i8_20150530_b564.sid.lyr	Le

# *Irrigation Status Designation*



## *3 Status Designation Categories*

- *Irrigated*
- *Semi-irrigated*
- *Non-irrigated*

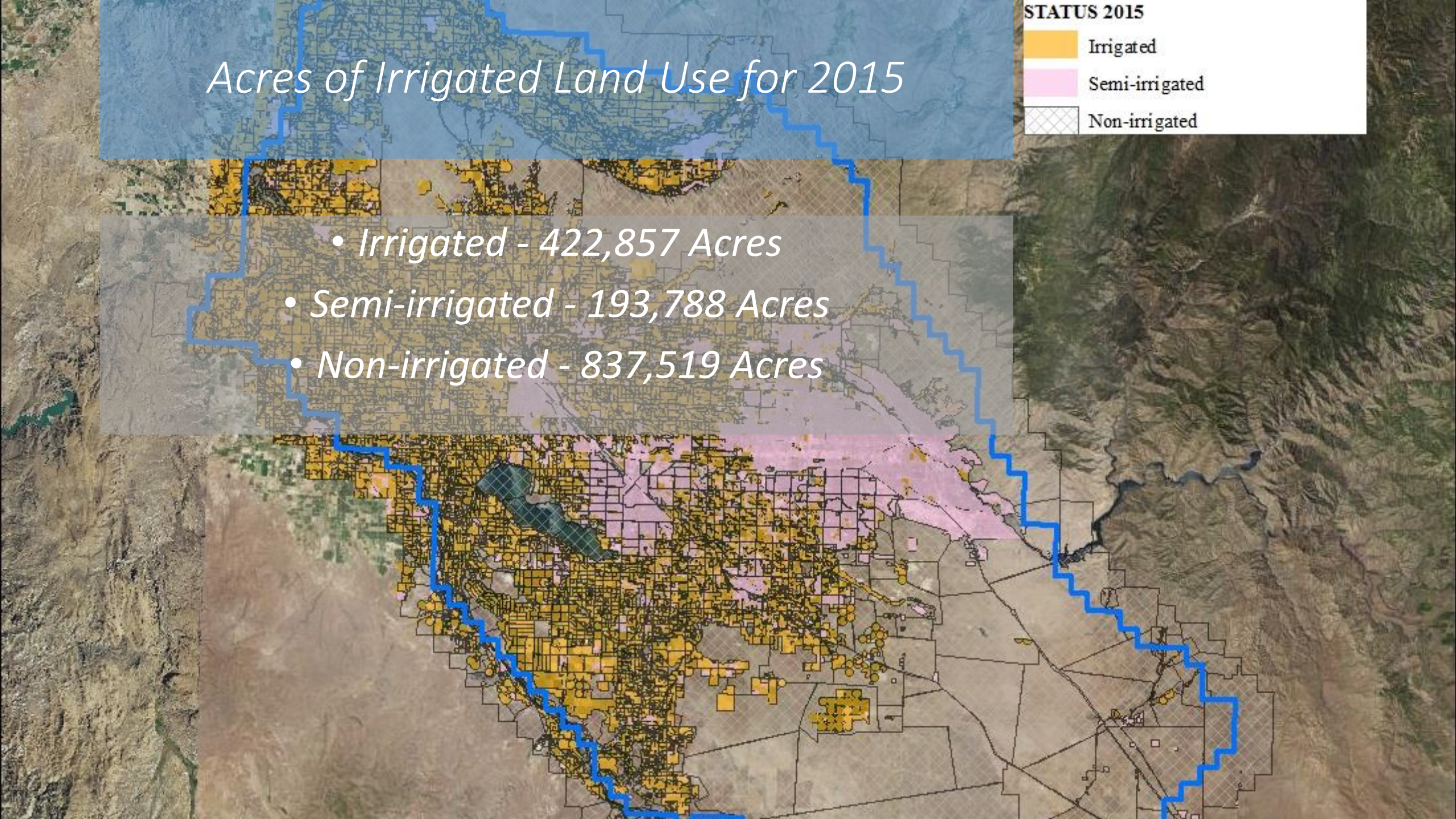


# Acres of Irrigated Land Use for 2015

STATUS 2015



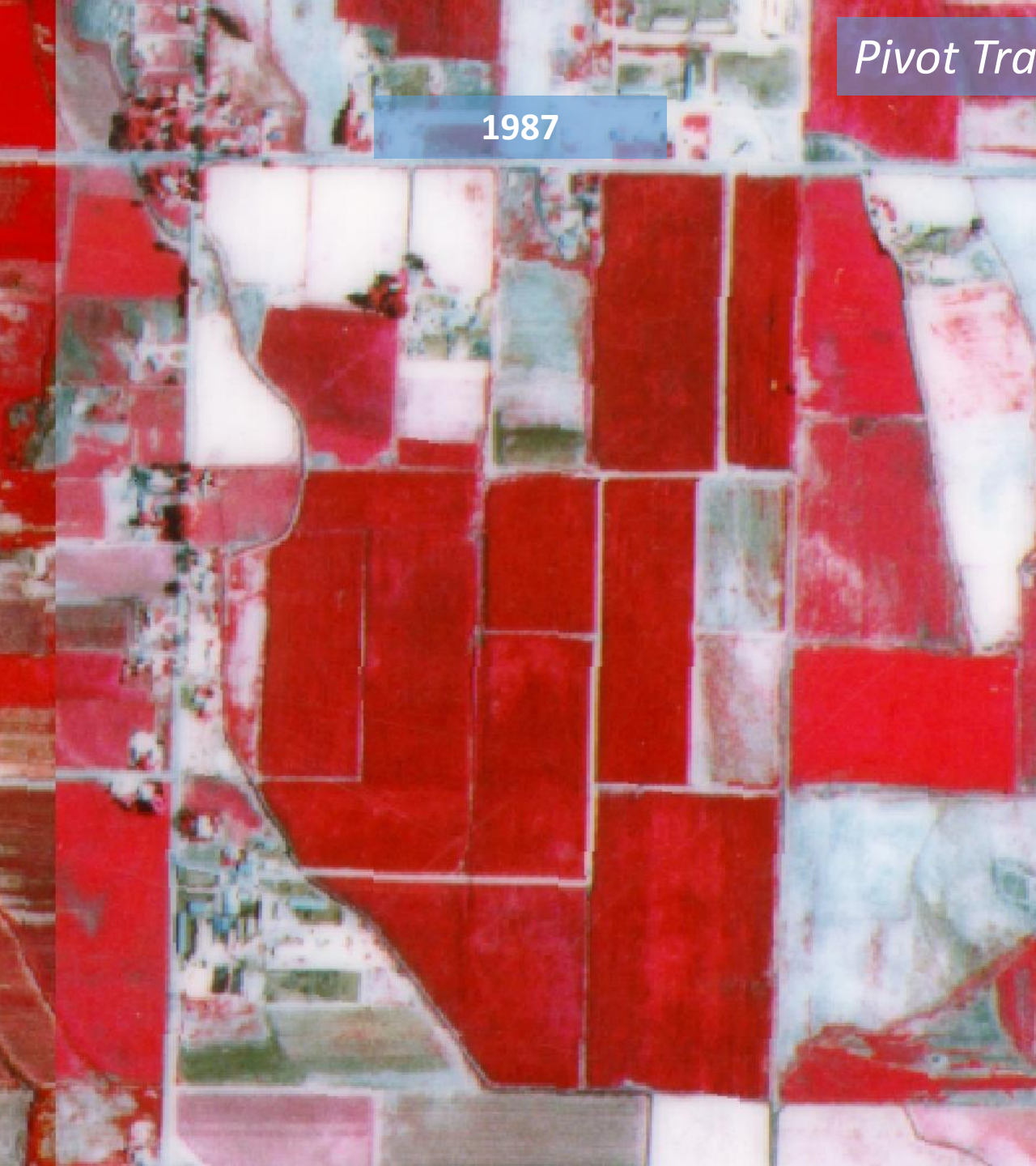
- Irrigated - 422,857 Acres
- Semi-irrigated - 193,788 Acres
- Non-irrigated - 837,519 Acres





*Pivot Transitions*

1987

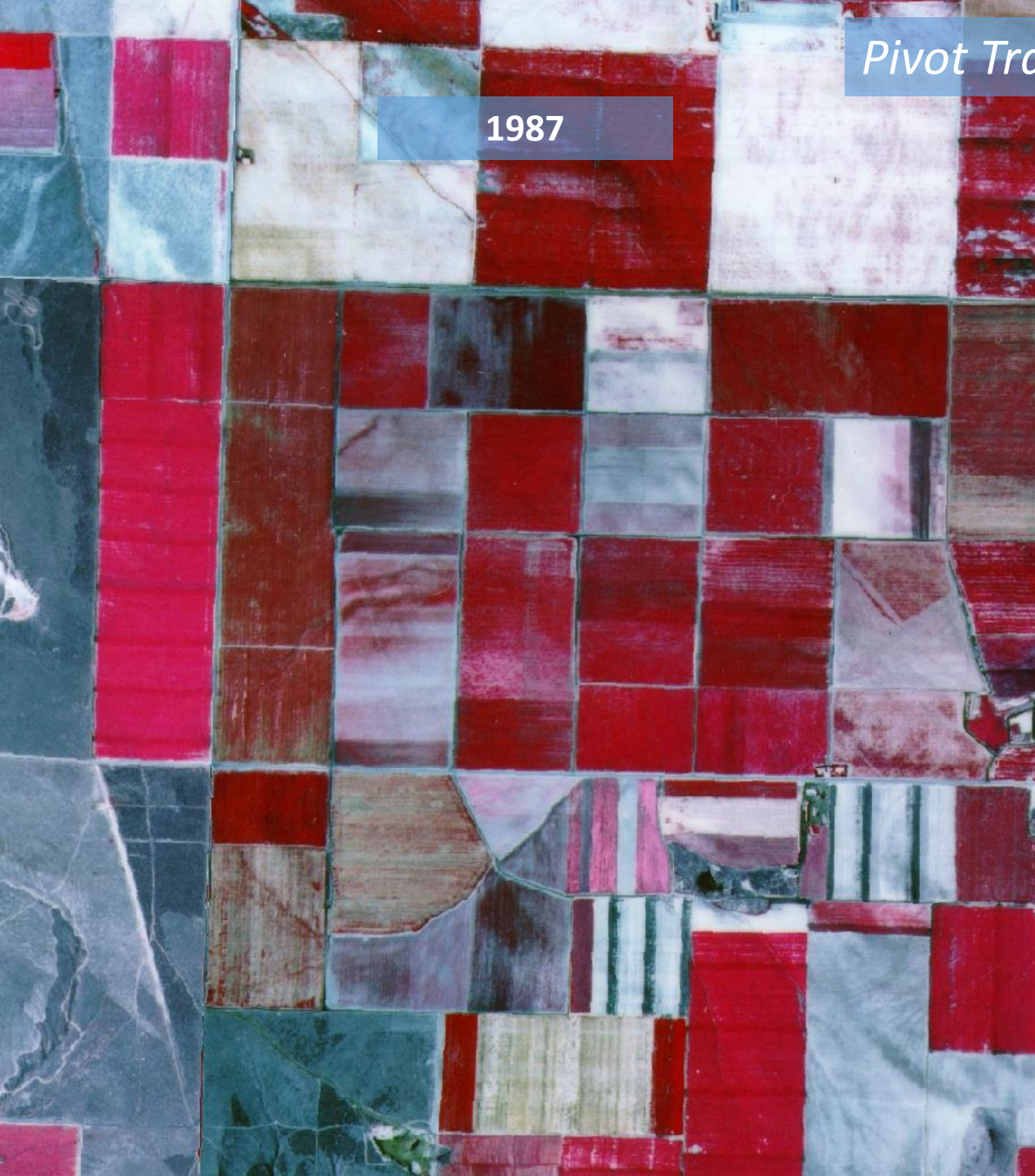


2015



*Pivot Transitions*

1987



2015



*Pivot Transitions*

1987



2015



*Pivot Transitions and fields Merging*

1987



2015

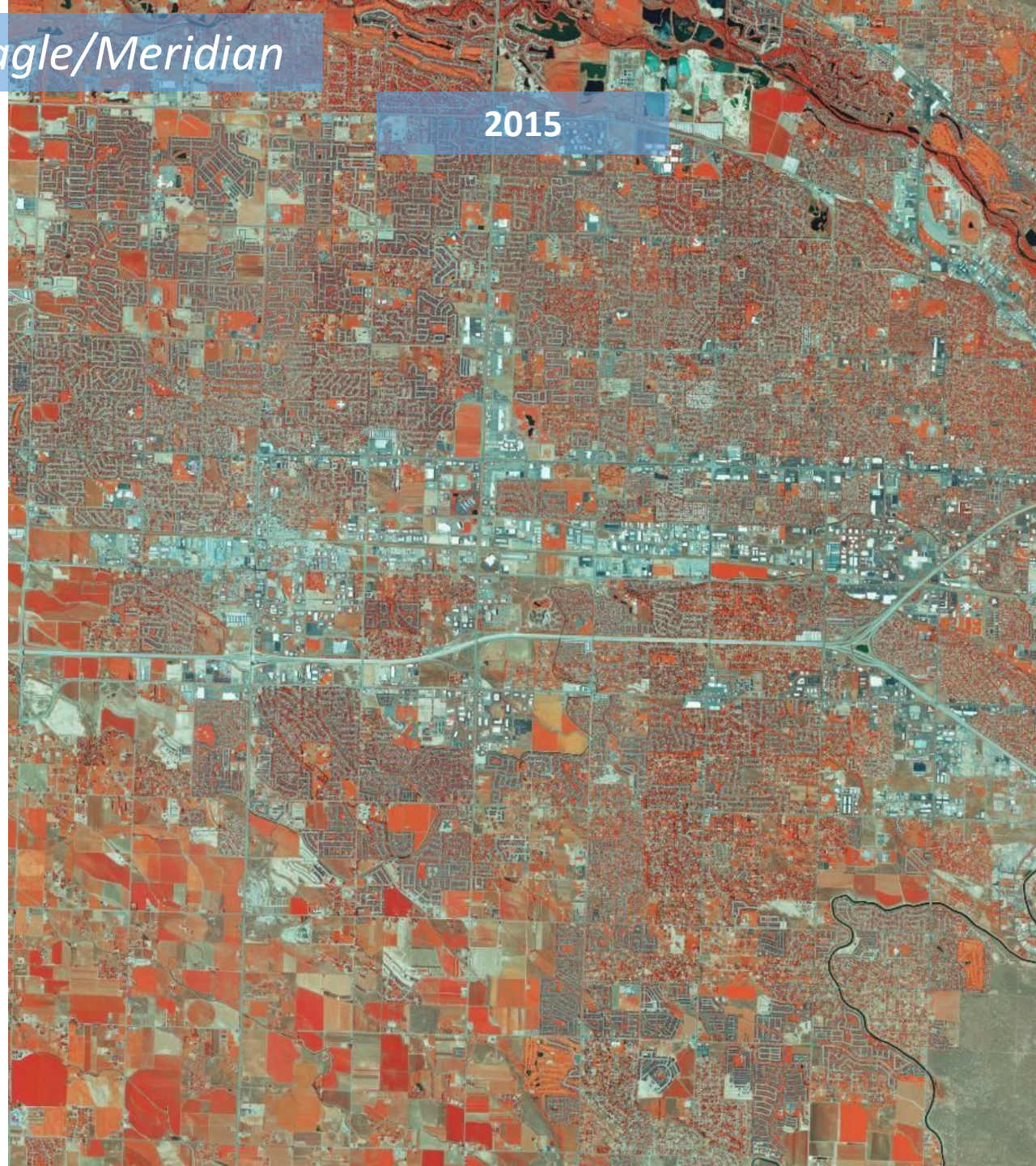


*West Boise/Eagle/Meridian*

1987

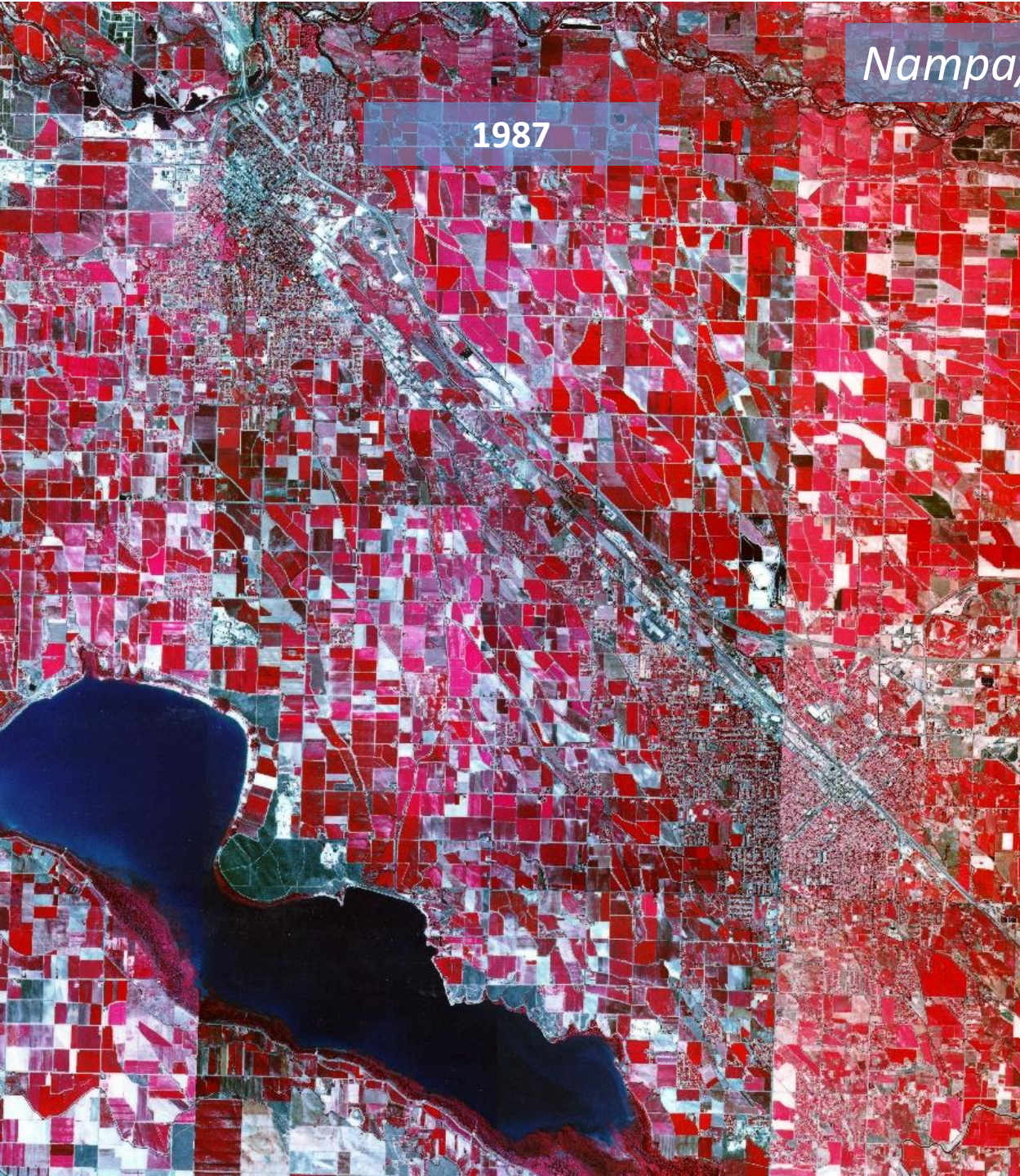


2015

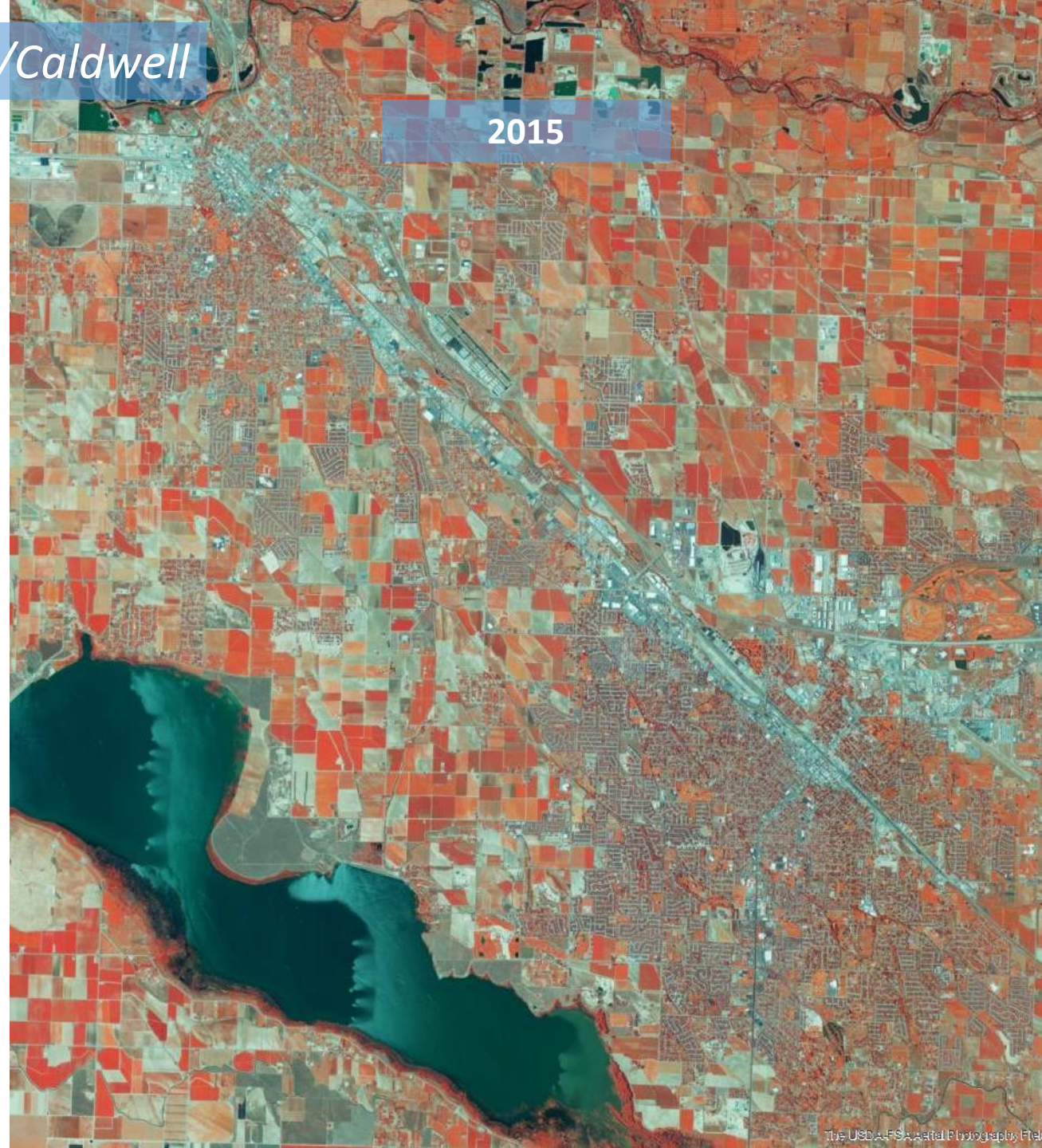


Nampa/Caldwell

1987



2015

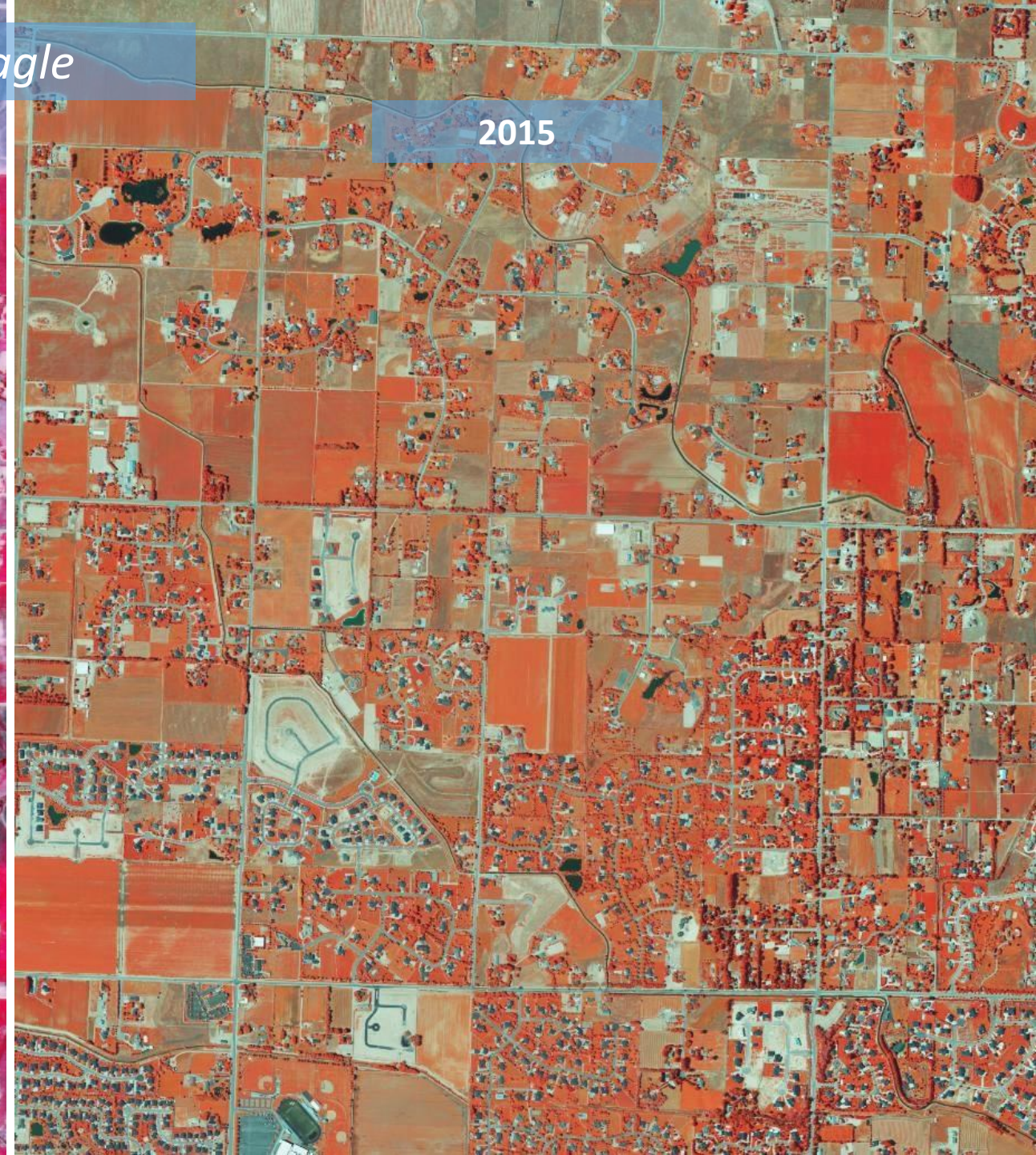


*North Eagle*

1987



2015

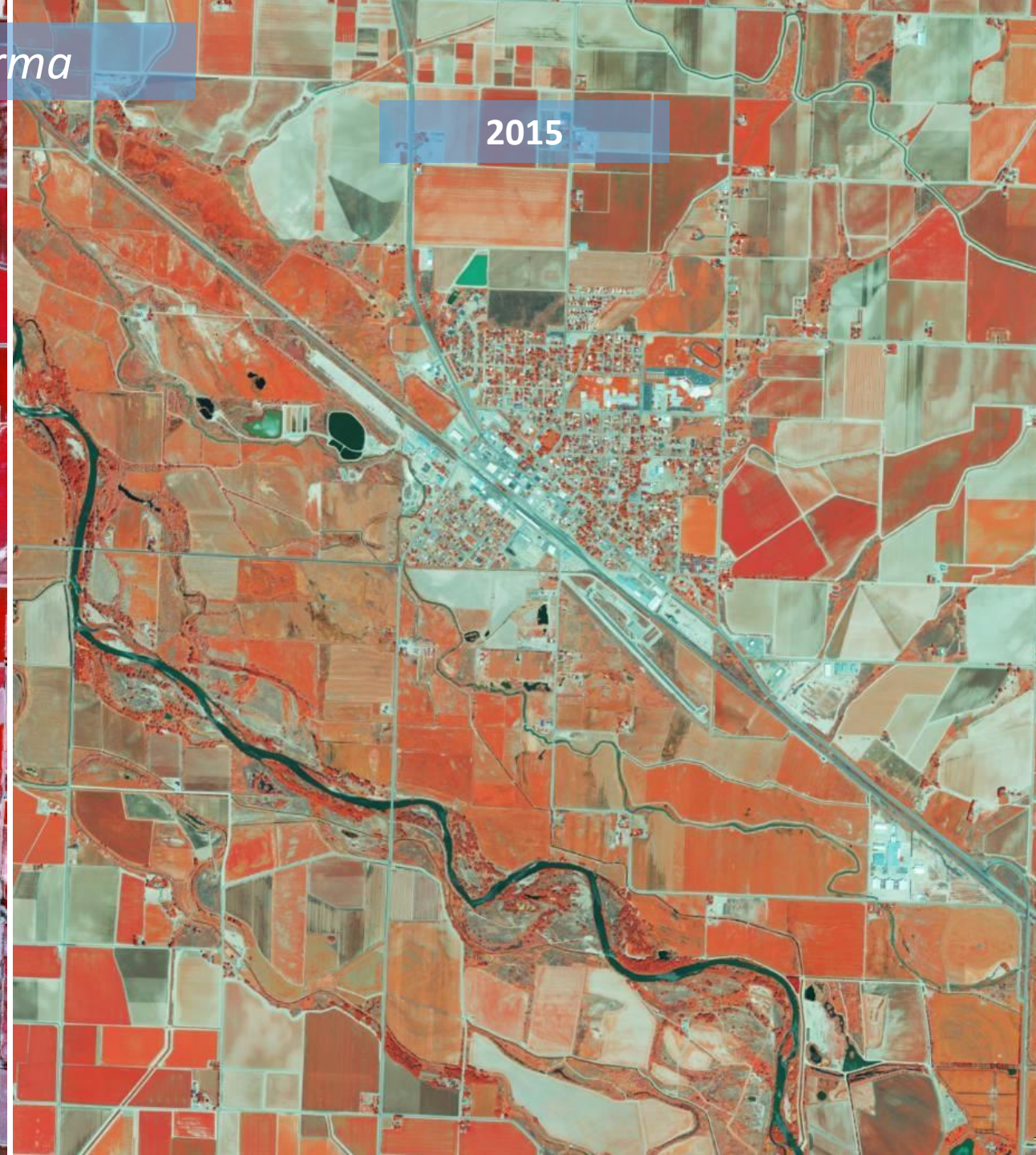


*Parma*

1987



2015





An aerial photograph of a rural landscape, possibly agricultural, overlaid with a complex grid of red and blue lines. The red lines form a dense, irregular grid, while the blue lines form a more regular, rectangular grid. The background shows various shades of green, brown, and tan, suggesting different types of land use or vegetation. A semi-transparent blue horizontal band is centered across the image, containing the word "Questions?" in white, italicized font.

*Questions?*