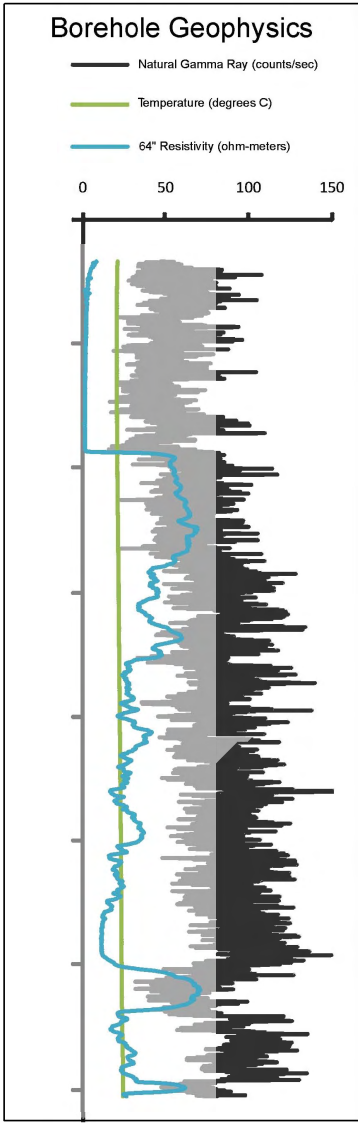


# North Ada County Monitoring Well #1

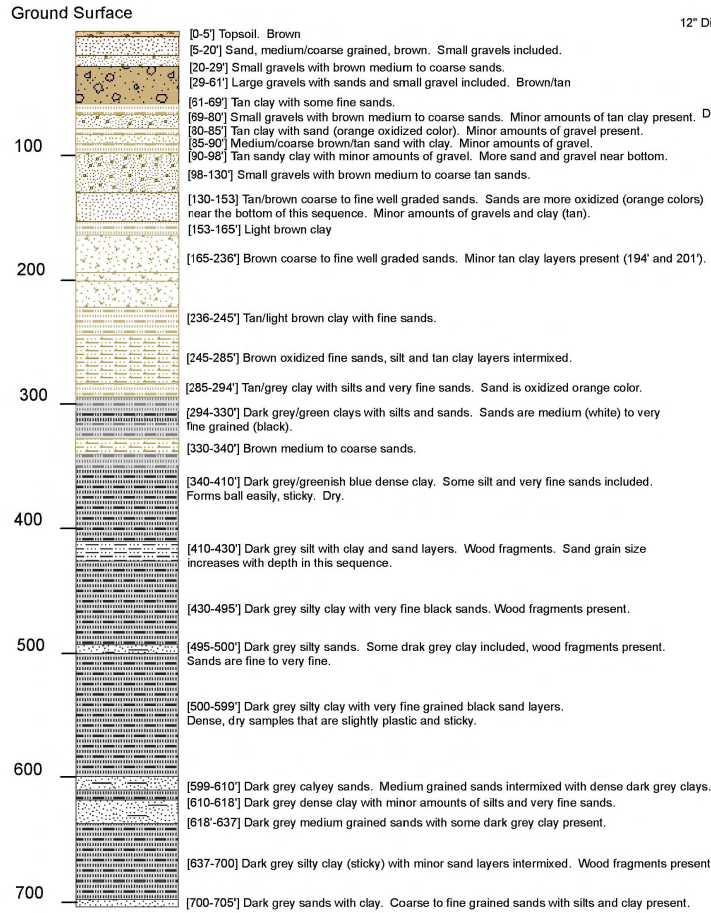
## T. 4 N., R. 1 E., Section 09



Borehole geophysics conducted by MTI, Boise, Idaho 8/3/2010

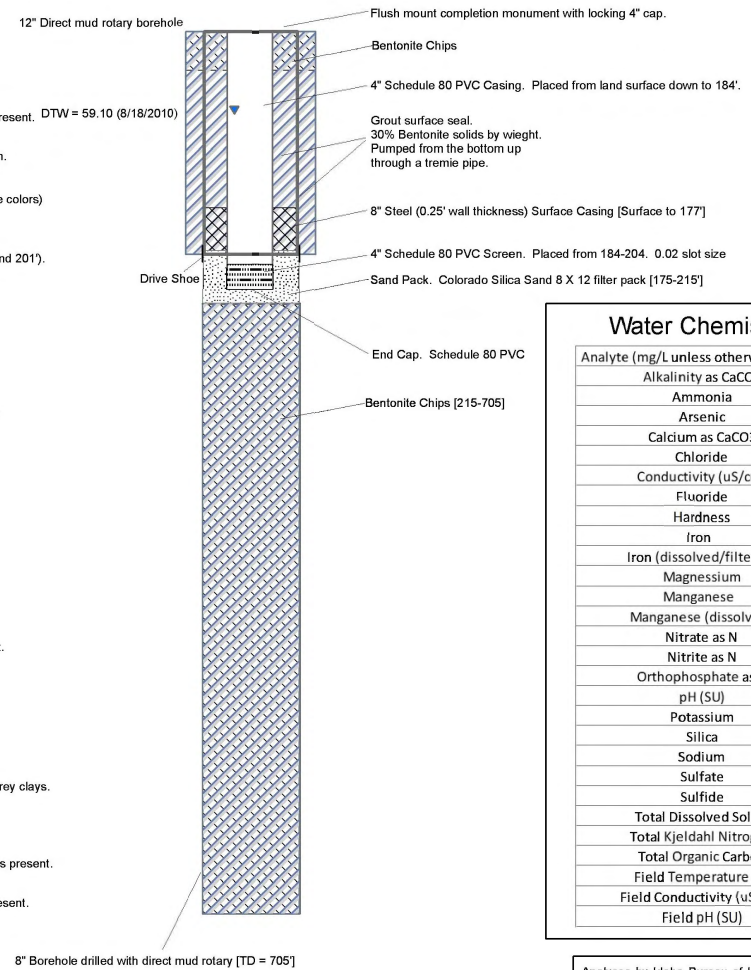
### Lithology

Lithology based on drill cutting analysis conducted by IDWR



Well drilling and construction by Down Right Drilling and Pump Company, Caldwell, Idaho.

### As-Built Well Construction



### Water Chemistry Results

Analyte (mg/L unless otherwise noted)	Value
Alkalinity as CaCO3	207
Ammonia	<0.010
Arsenic	<0.0050
Calcium as CaCO3	55
Chloride	4.79
Conductivity (uS/cm)	577
Fluoride	0.35
Hardness	180
Iron	0.079
Iron (dissolved/filtered)	<0.010
Magnesium	11
Manganese	0.016
Manganese (dissolved)	0.008
Nitrate as N	1.04
Nitrite as N	<0.30
Orthophosphate as P	0.068
pH (SU)	6.95
Potassium	2.1
Silica	36
Sodium	32
Sulfate	26.6
Sulfide	<0.10
Total Dissolved Solids	270
Total Kjeldahl Nitrogen	0.14
Total Organic Carbon	0.6
Field Temperature (C)	15.1
Field Conductivity (uS/cm)	424
Field pH (SU)	6.99

Analyses by Idaho Bureau of Laboratories, Boise, Idaho and Analytical Laboratories in Boise, Idaho. Samples collected on August 11, 2010. Field parameters by Idaho Department of Water Resources