

# Milner to Swan Fall Reach Gain Statistics



Swan Falls Technical Group Meeting

March 13, 2025



### Milner to Swan Falls Reach Gains Monthly Totals (acre-ft)

	1993-2004 Avg	2004	2005	2006	2007	2008	2009	2010	2011	2012	2013	2014	2015	2016	2017	2018	2019	2020	2021	2022	2023	2024	2025	2004-2024 Avg
Jan	413,025	369,922	361,814	391,149	369,395	369,424	370,198	364,734	384,466	399,210	384,338	363,113	370,589	361,834	387,170	403,878	387,903	389,323	382,516	371,571	369,124	377,008	373,747	377,080
Feb	373,115	347,979	317,325	311,755	342,189	342,499	326,500	322,051	324,445	339,679	338,351	320,724	334,858	327,381	471,722	351,097	324,495	346,512	346,326	325,787	318,217	358,444	348,242	339,921
Mar	414,752	391,008	353,562	398,097	376,411	373,582	370,994	369,807	375,685	363,412	363,529	355,763	353,199	367,889	370,643	380,727	391,168	352,892	362,484	347,155	357,706	362,680		368,495
Apr	361,940	299,963	293,906	341,848	316,350	319,790	275,430	325,585	353,552	376,913	287,438	309,531	290,556	308,323	363,192	344,246	356,801	331,310	320,255	309,418	336,992	354,844		324,583
May	345,889	313,208	340,472	371,166	300,708	290,839	340,582	348,213	343,669	327,430	269,344	284,967	305,412	314,567	389,956	337,256	394,525	373,404	316,713	321,937	315,059	395,146		333,075
Jun	315,781	262,393	276,435	273,454	260,536	287,908	289,633	325,514	355,498	256,383	255,566	225,453	264,398	259,108	292,722	345,376	323,735	313,244	269,640	301,536	272,099	251,948		283,932
Jul	312,536	268,409	262,801	277,792	260,840	244,294	325,327	275,240	254,249	292,168	255,072	271,262	284,703	270,776	273,912	263,521	297,769	305,510	269,344	248,462	266,394	265,700		273,026
Aug	330,601	298,022	293,809	322,677	310,509	310,964	316,313	327,160	300,628	305,295	301,028	344,235	304,164	281,948	332,023	332,085	325,641	337,336	315,077	274,830	298,605	301,764		311,148
Sep	378,993	337,878	340,259	359,354	352,659	346,721	350,333	338,039	347,756	351,541	355,373	365,128	346,322	372,748	371,100	363,733	385,476	382,143	362,341	331,709	343,889	359,214		355,415
Oct	438,450	384,933	388,776	406,933	399,087	401,584	420,374	410,278	459,941	412,983	398,823	421,013	403,010	416,310	424,457	431,048	443,290	441,864	421,206	381,376	417,474	412,166		414,139
Nov	414,485	358,933	358,314	364,620	373,365	377,402	373,295	395,792	394,990	380,834	384,627	379,616	375,907	369,874	392,646	393,706	400,923	406,402	384,158	379,495	379,197	386,445		381,454
Dec	415,559	366,850	376,558	367,680	377,964	380,573	367,484	400,231	395,226	401,989	384,336	384,028	379,477	376,281	387,142	388,100	398,534	383,488	379,727	375,774	374,790	387,411		382,554
May-Sept Total	1,683,800	1,479,910	1,513,777	1,604,443	1,485,253	1,480,726	1,622,189	1,614,166	1,601,800	1,532,816	1,436,372	1,491,045	1,504,999	1,499,148	1,659,713	1,641,971	1,727,145	1,711,638	1,533,114	1,478,473	1,496,047	1,573,772		1,556,596
Annual Total	4,515,125	3,989,499	3,964,031	4,186,524	4,040,014	4,045,580	4,126,464	4,202,645	4,290,104	4,207,838	3,977,815	4,024,834	4,012,595	4,027,040	4,456,685	4,334,772	4,430,258	4,363,428	4,129,787	3,969,050	4,049,546	4,212,769		4,144,823
Annual Average	376,260	332,458	330,336	348,877	336,668	337,132	343,872	350,220	357,509	350,653	331,485	335,403	334,383	335,587	371,390	361,231	369,188	363,619	344,149	330,754	337,462	351,064		345,402

**Notes:**

Milner to Swan Falls Reach Gain (acre-ft) = Snake River near Murphy - Snake River at Milner (Total Flow) - Rock creek Ab Hwy 30/93 Xling at Twin Falls - Salmon Falls Creek Nr Hagerman - Malad River Nr Gooding - Brueanu River Nr Hot Springs

Rows colored for each month ranging from minimum (Red) to maximum (Green) from CY 2004 to CY 2025

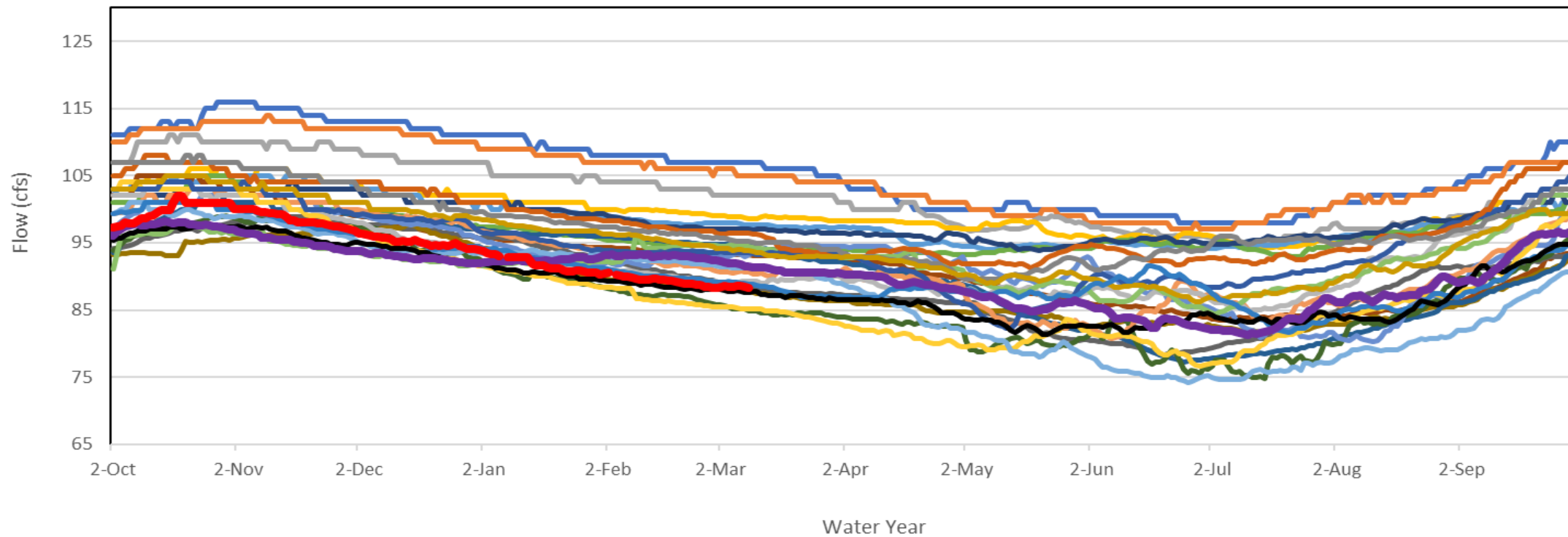
Data Source: USGS and IPC (approved and provisional)



	1993-2004 Avg	2017	2018	2019	2020	2021	2022	2023	2024	2025	2004-2024 Avg
<b>Jan</b>	413,025	387,170	403,878	387,903	389,323	382,516	371,571	369,124	377,008	373,747	377,080
<b>Feb</b>	373,115	471,722	351,097	324,495	346,512	346,326	325,787	318,217	358,444	348,242	339,921
<b>Mar</b>	414,752	370,643	380,727	391,168	352,892	362,484	347,155	357,706	362,680		368,495
<b>Apr</b>	361,940	363,192	344,246	356,801	331,310	320,255	309,418	336,992	354,844		324,583
<b>May</b>	345,889	389,956	337,256	394,525	373,404	316,713	321,937	315,059	395,146		333,075
<b>Jun</b>	315,781	292,722	345,376	323,735	313,244	269,640	301,536	272,099	251,948		283,932
<b>Jul</b>	312,536	273,912	263,521	297,769	306,510	269,344	248,462	266,394	265,700		273,026
<b>Aug</b>	330,601	332,023	332,085	325,641	337,336	315,077	274,830	298,605	301,764		311,148
<b>Sep</b>	378,993	371,100	363,733	385,476	382,143	362,341	331,709	343,889	359,214		355,415
<b>Oct</b>	438,450	424,457	431,048	443,290	441,854	421,206	381,376	417,474	412,166		414,139
<b>Nov</b>	414,485	392,646	393,706	400,923	406,402	384,158	379,495	379,197	386,445		381,454
<b>Dec</b>	415,559	387,142	388,100	398,534	383,488	379,727	375,774	374,790	387,411		382,554
<b>May-Sept Total</b>	1,683,800	1,659,713	1,641,971	1,727,145	1,711,638	1,533,114	1,478,473	1,496,047	1,573,772		1,556,596
<b>Annual Total</b>	4,515,125	4,456,685	4,334,772	4,430,258	4,363,428	4,129,787	3,969,050	4,049,546	4,212,769		4,144,823
<b>Annual Average</b>	376,260	371,390	361,231	369,188	363,619	344,149	330,754	337,462	351,064		345,402



### USGS 13095175 BRIGGS SPRING AT HEAD NEAR BUHL ID



- |      |      |      |      |      |      |      |      |      |
|------|------|------|------|------|------|------|------|------|
| 2000 | 2001 | 2002 | 2003 | 2004 | 2005 | 2006 | 2007 | 2008 |
| 2009 | 2010 | 2011 | 2012 | 2013 | 2014 | 2015 | 2016 | 2017 |
| 2018 | 2019 | 2020 | 2021 | 2022 | 2023 | 2024 | 2025 |      |