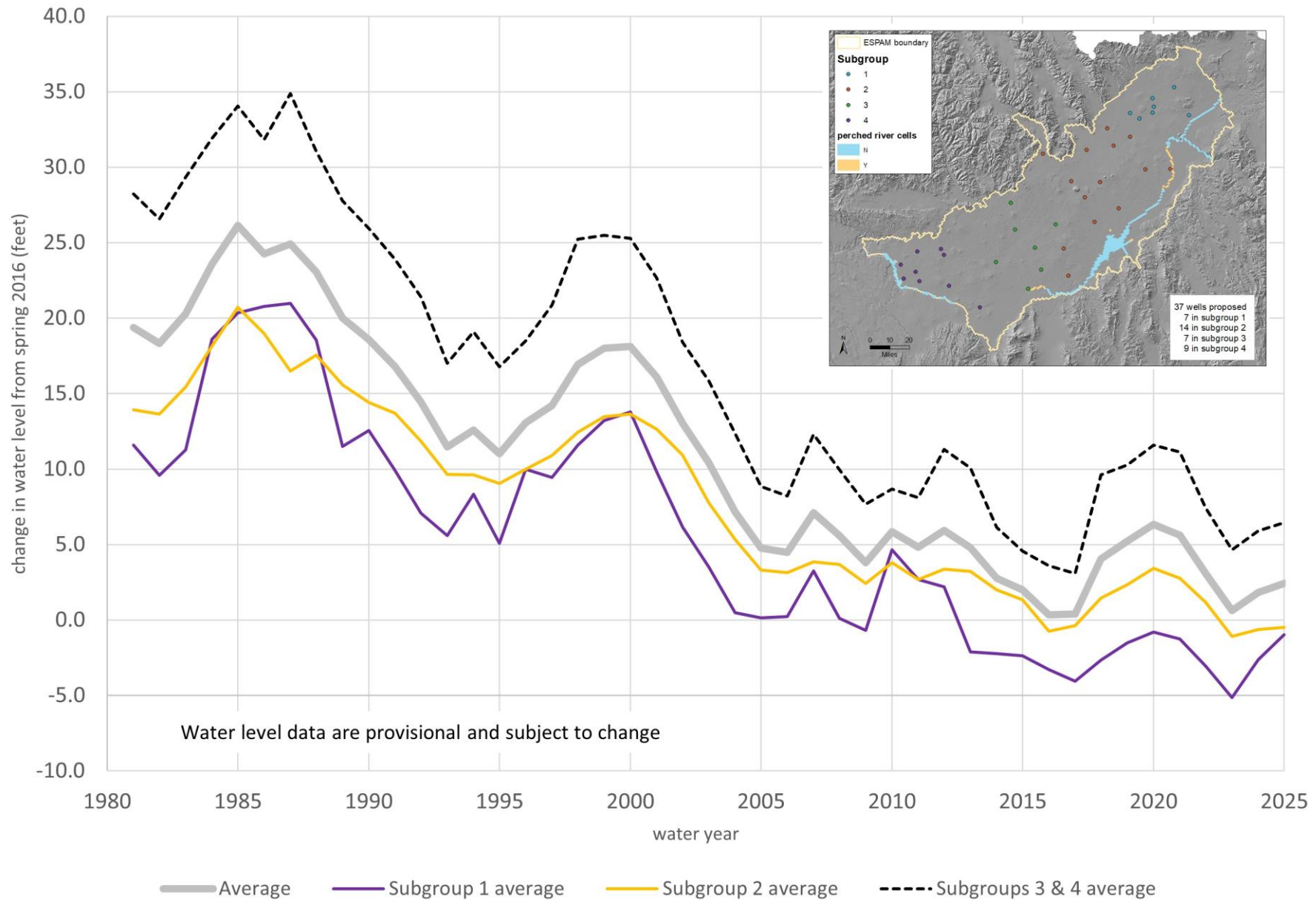
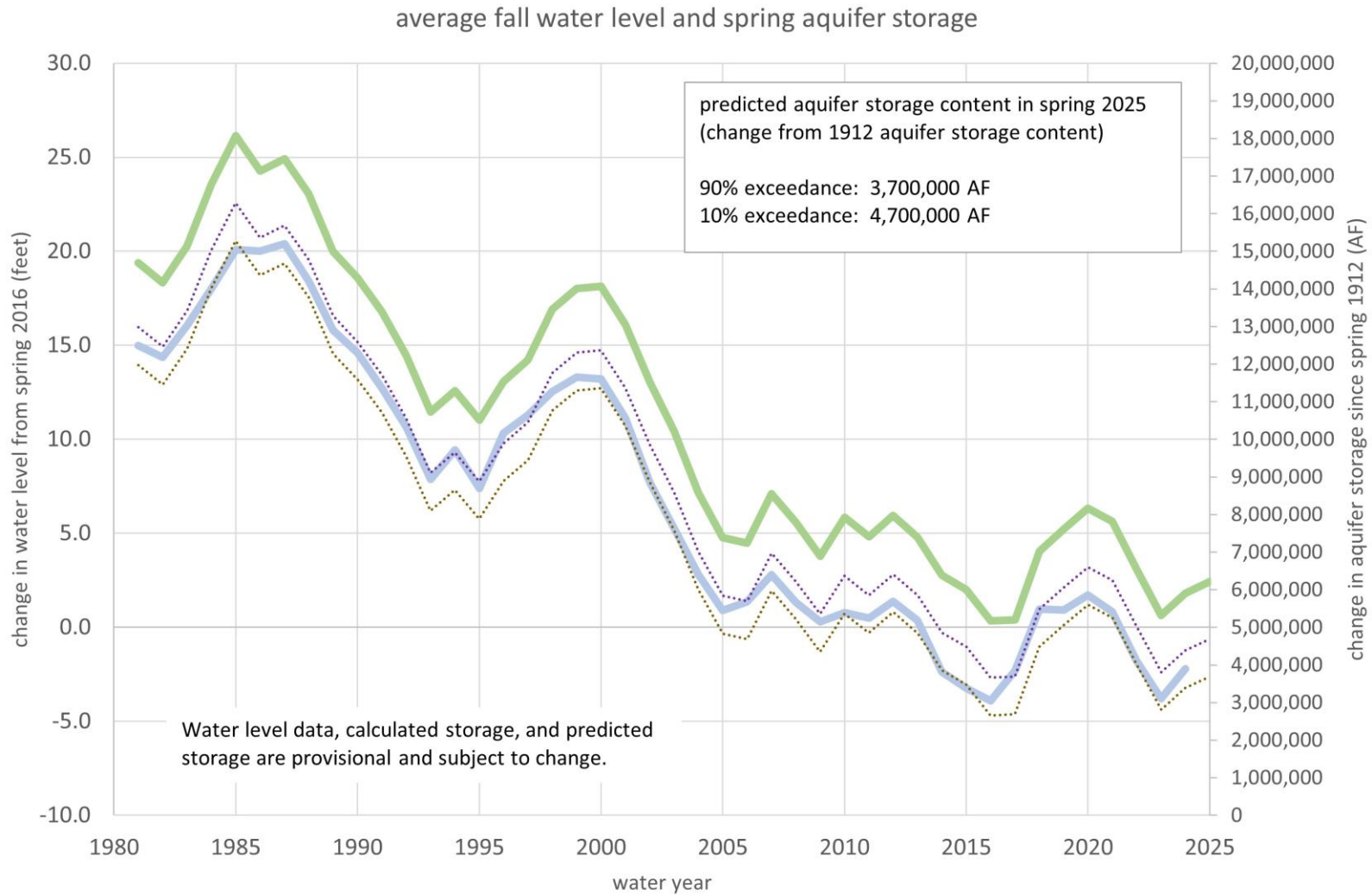


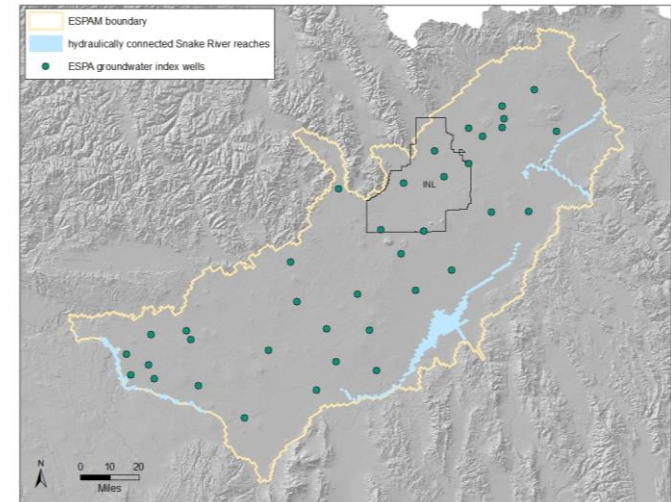
Average normalized fall water level (change from spring 2016 datum)



Predicted spring 2025 ESPA storage content based on fall water level in 37 wells

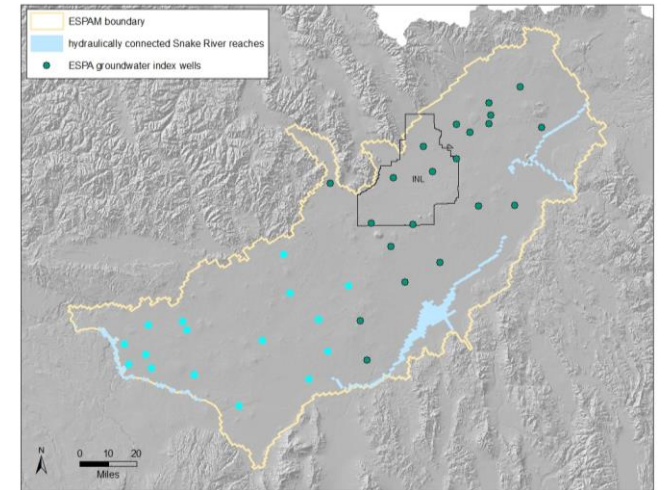
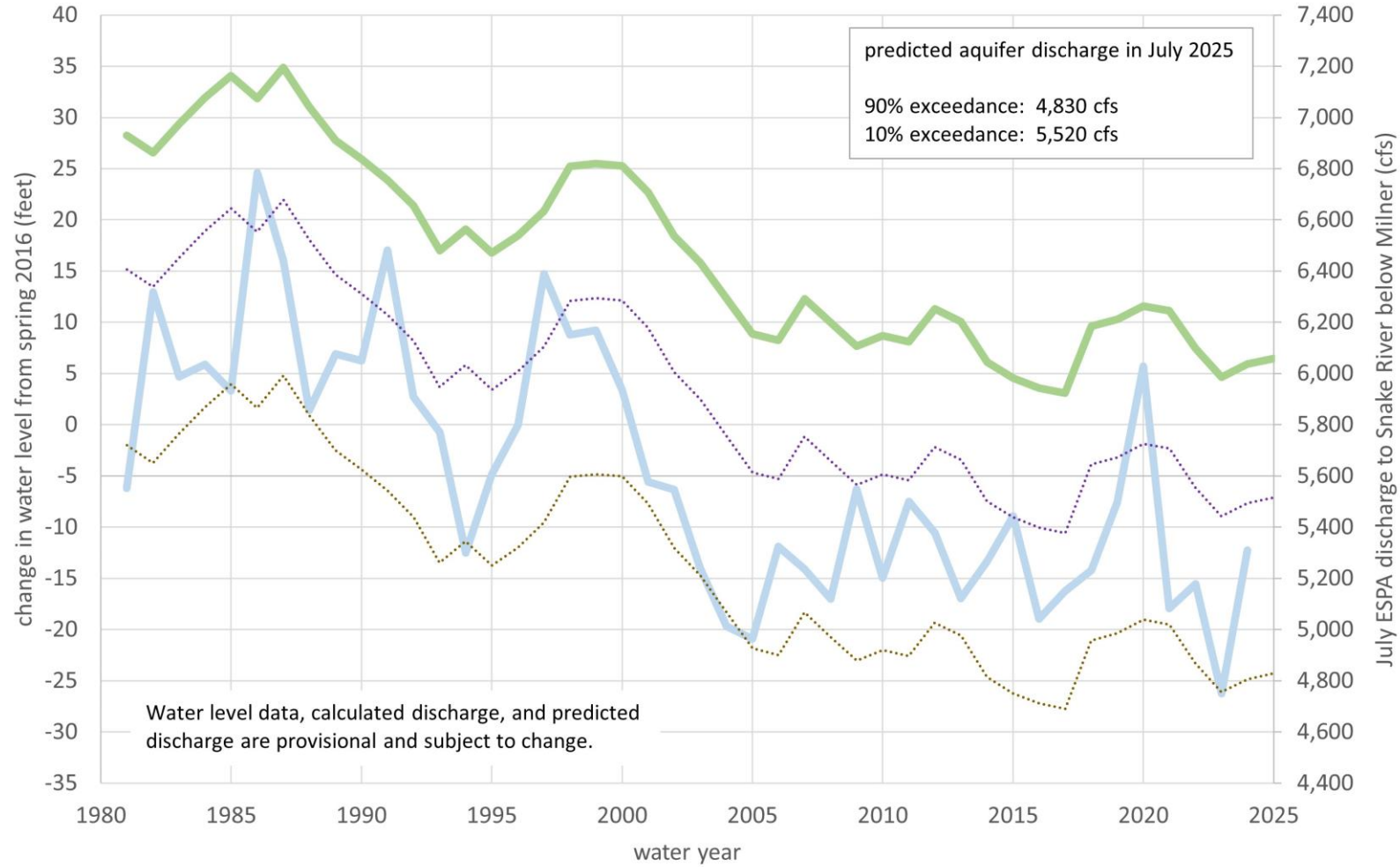


- average fall water level
- calculated spring storage (McVay)
- ⋯ predicted 10% exceedance
- ⋯ predicted 90% exceedance



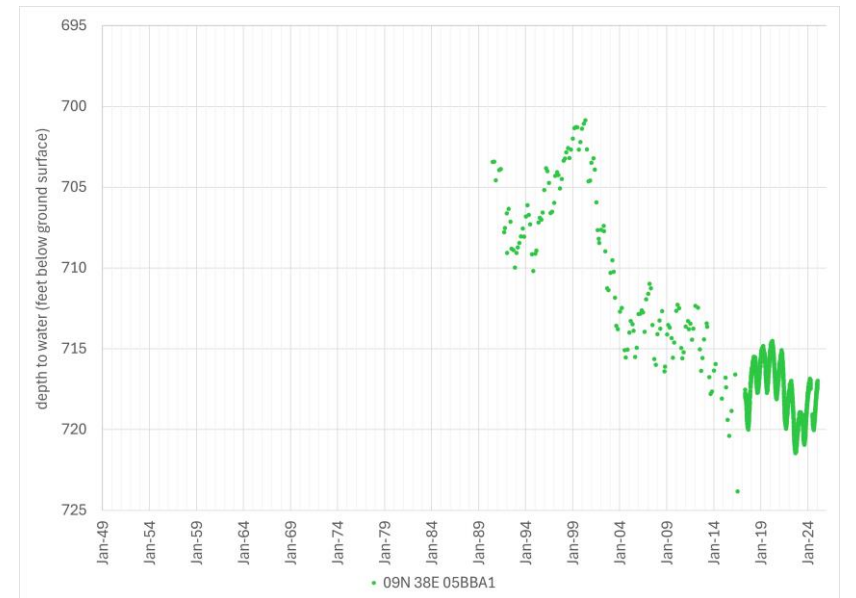
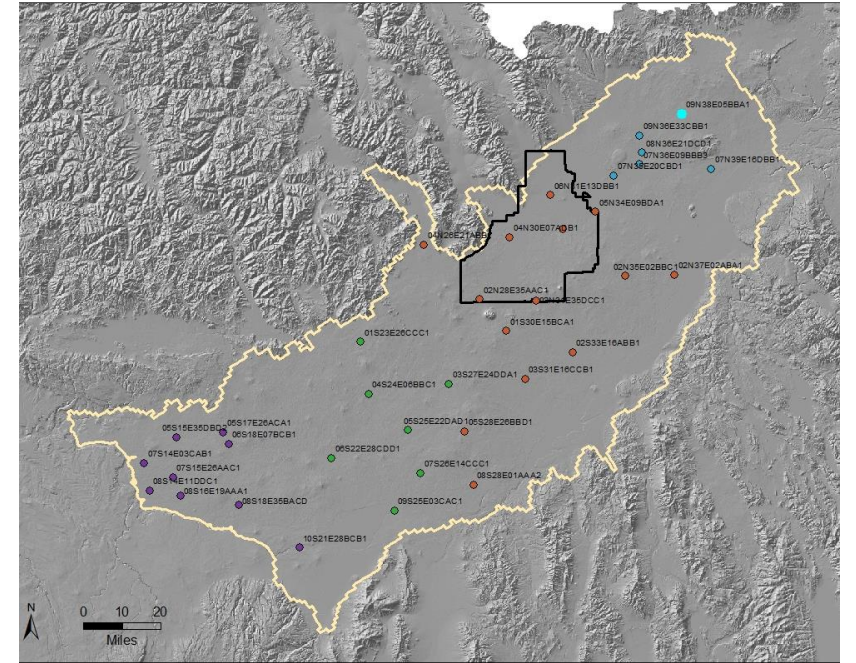
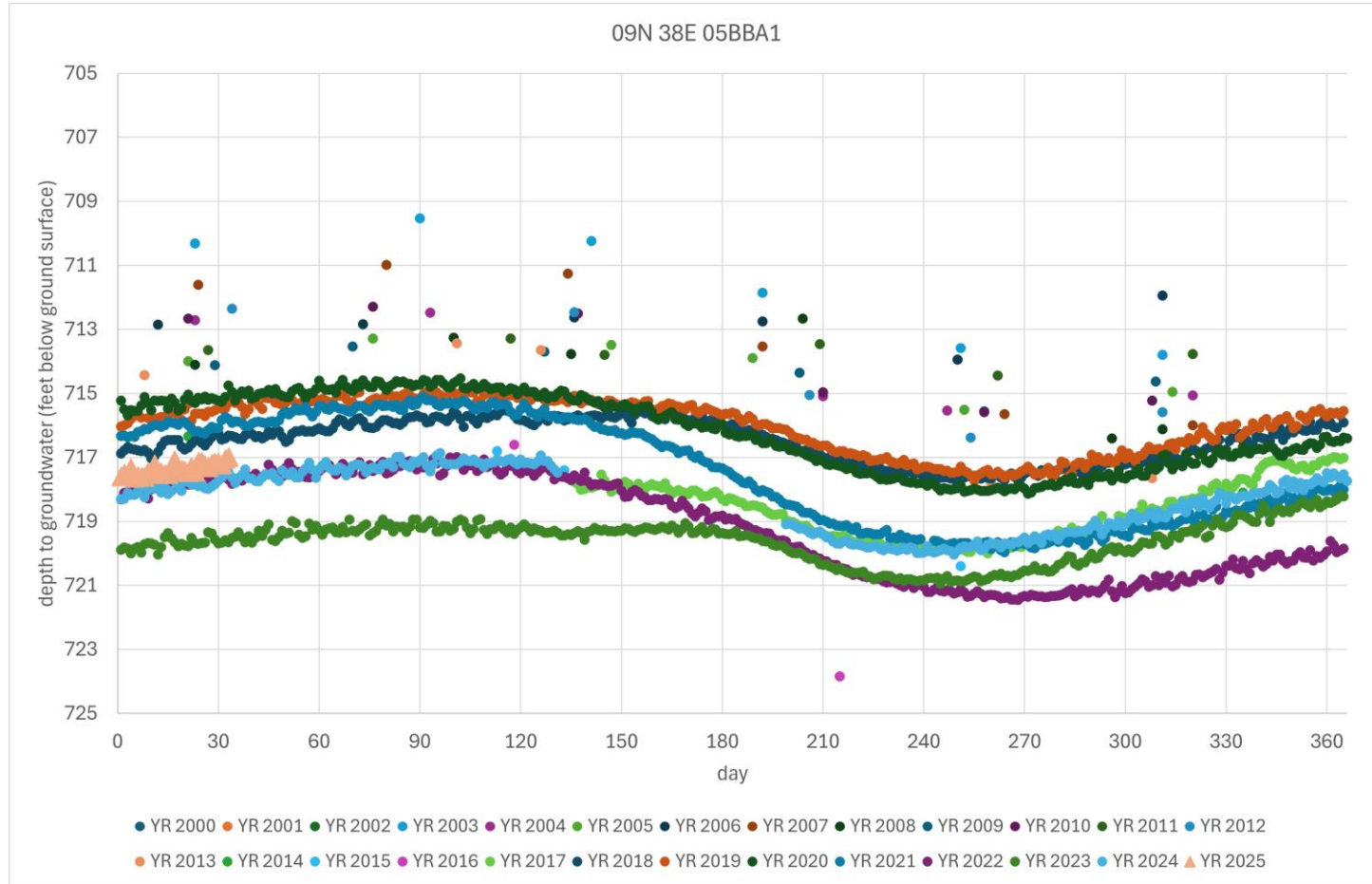
Predicted July 2025 ESPA discharge below Milner based on fall water level in 16 wells

subgroups 3 & 4 average fall water level and July ESPA discharge to Snake River below Milner

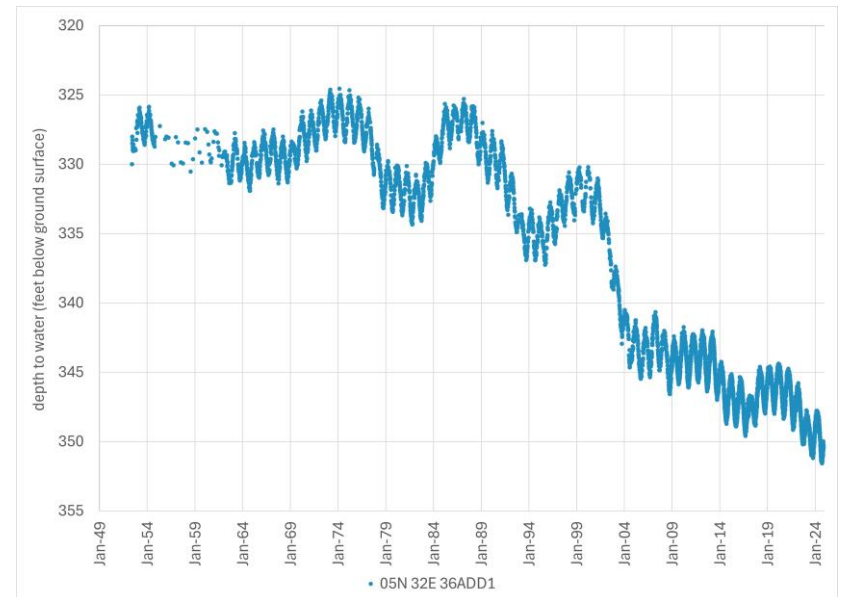
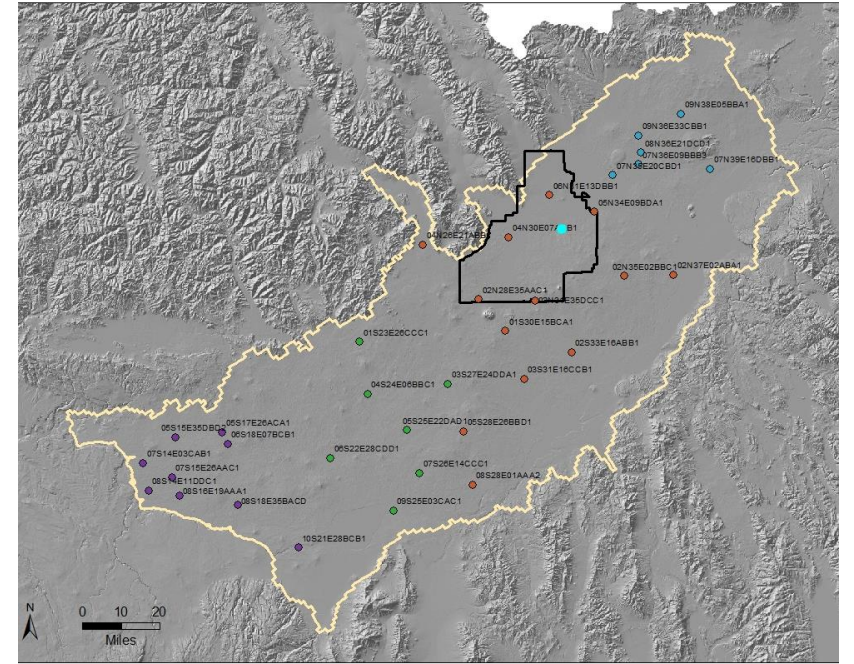
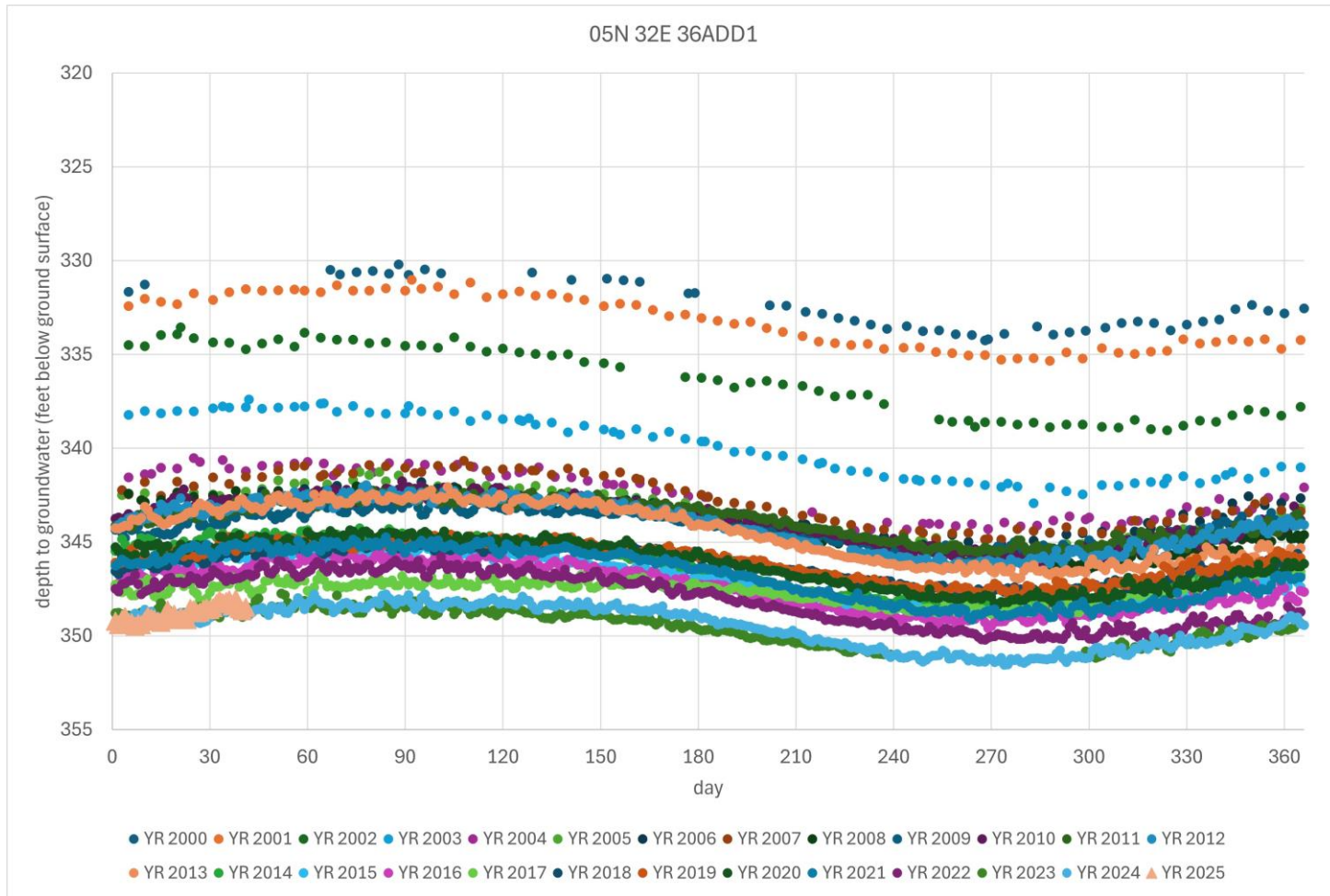


— average fall water level — calculated aquifer discharge - - - predicted 90% exceedance - · - · - predicted 10% exceedance

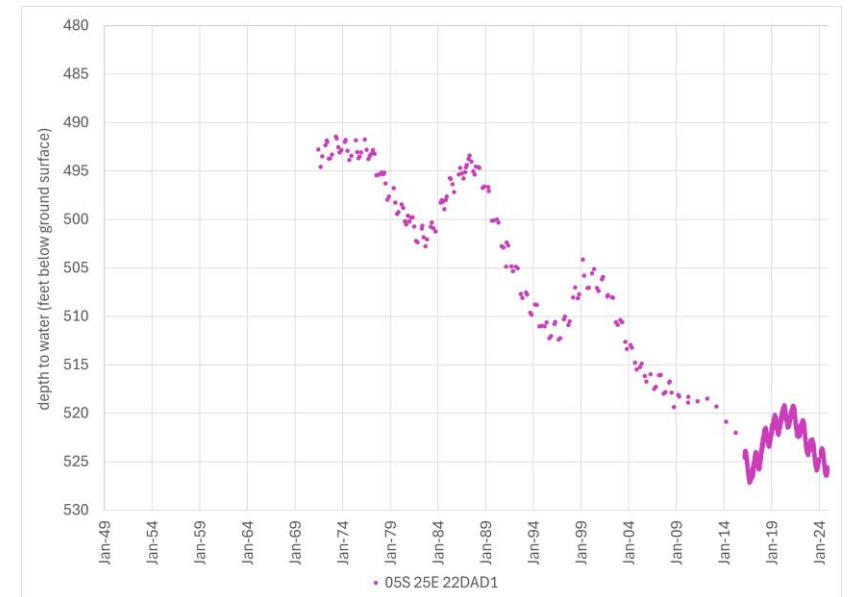
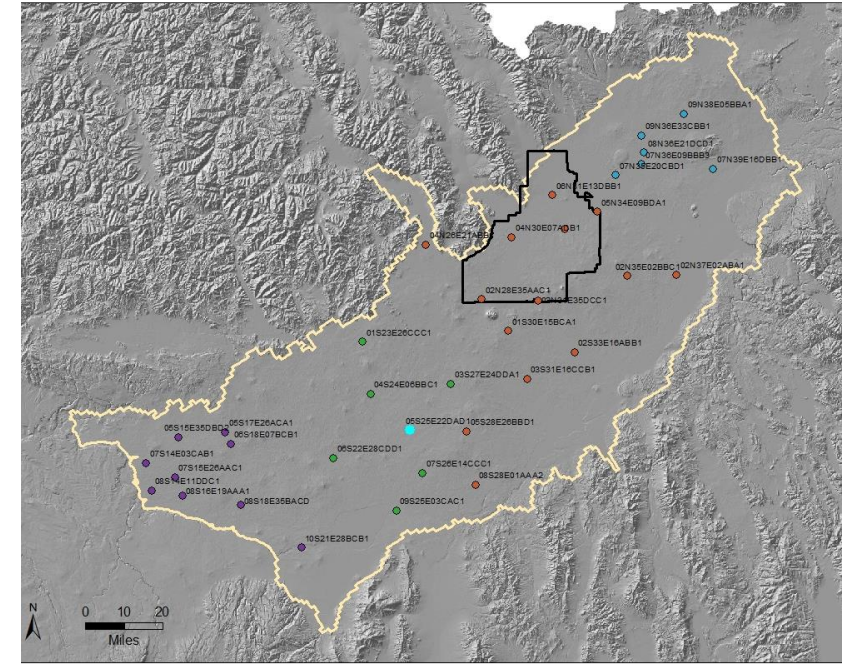
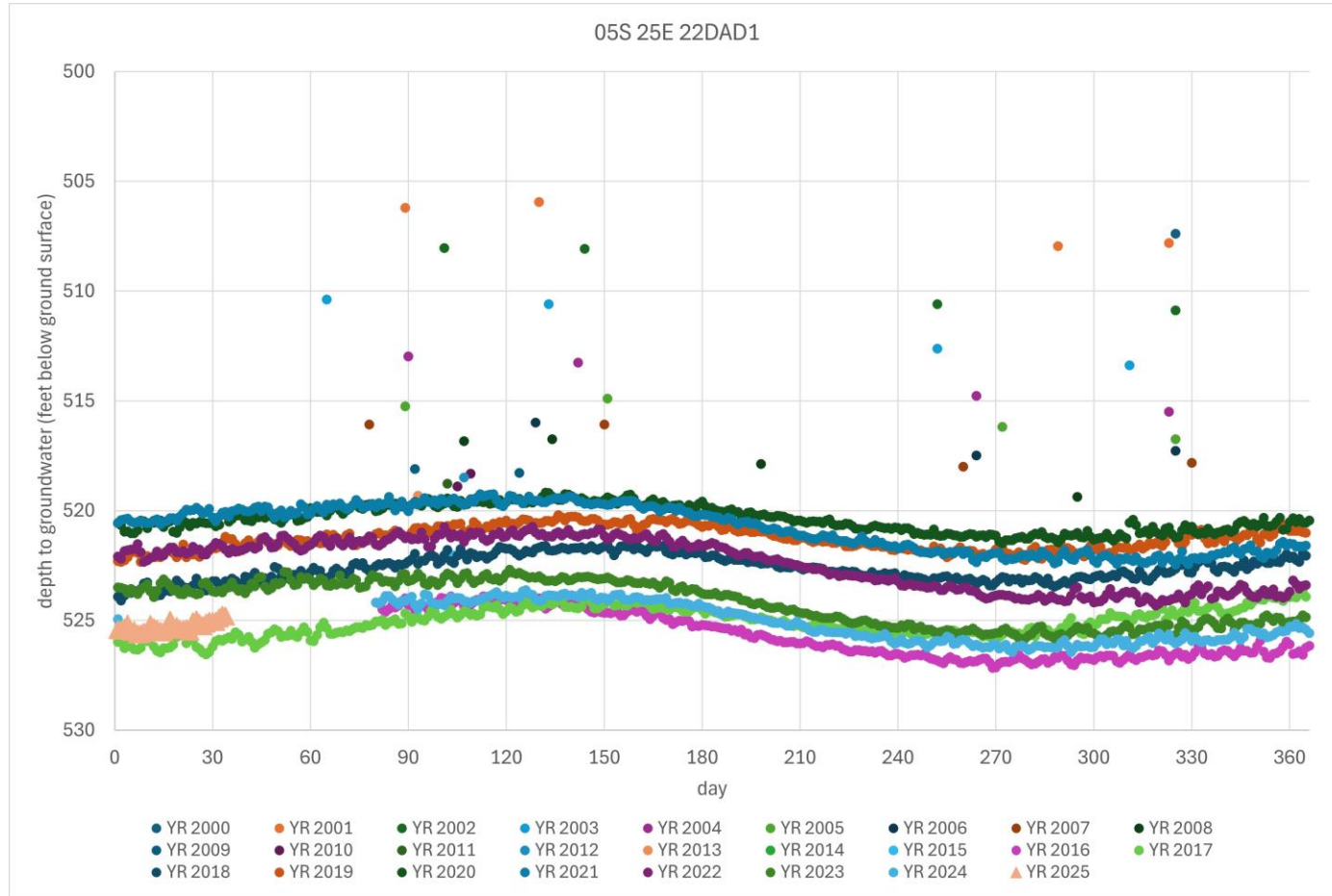
Subgroup 1 – 09N 38E 05BBA1



Subgroup 2 – 05N 32E 36ADD1



Subgroup 3 – 05S 25E 22DAD1



Subgroup 4 – 08S 16E 19AAA1

