

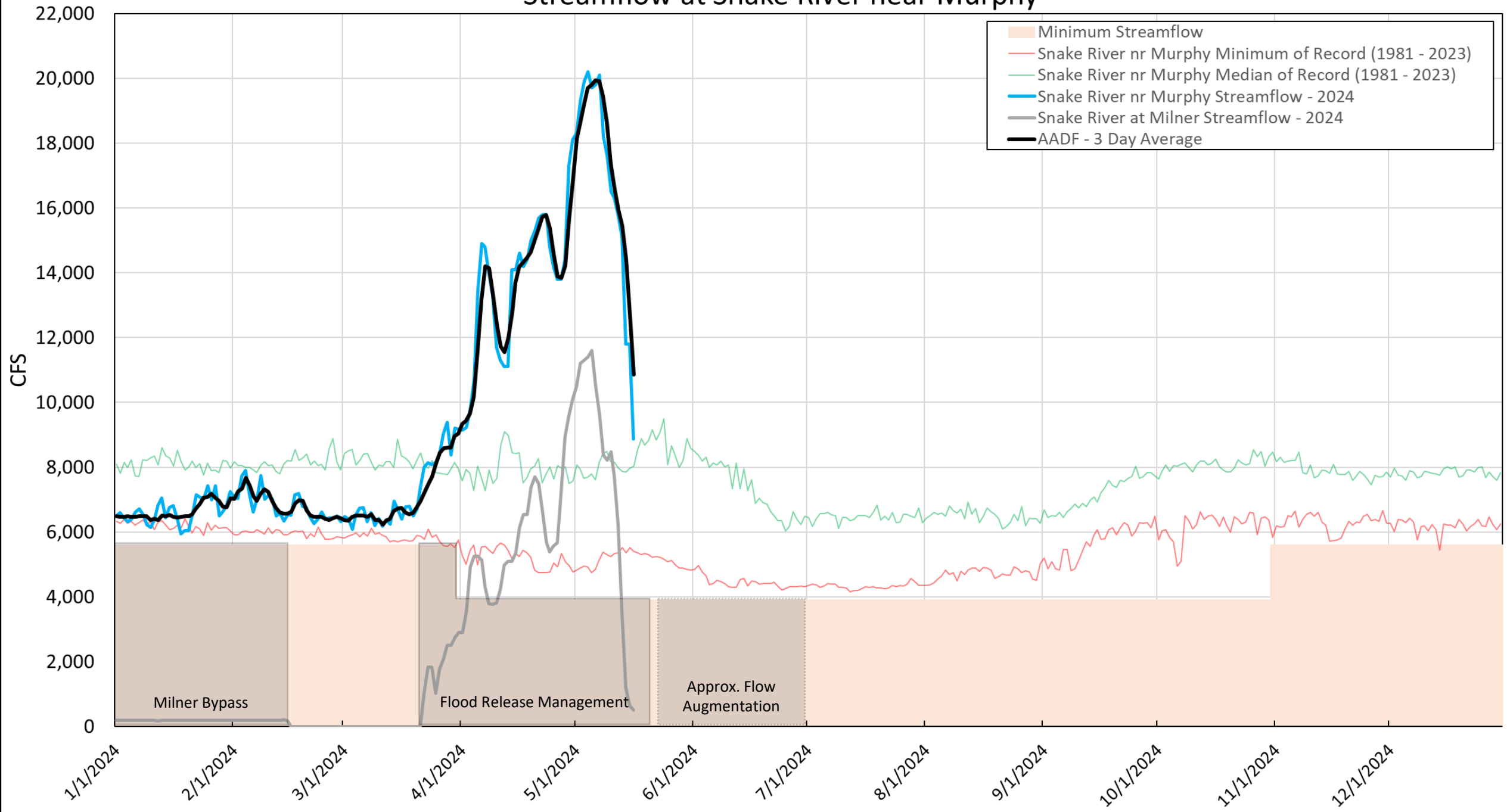
## Swan Falls AADF Update

Presented by Ethan Geisler

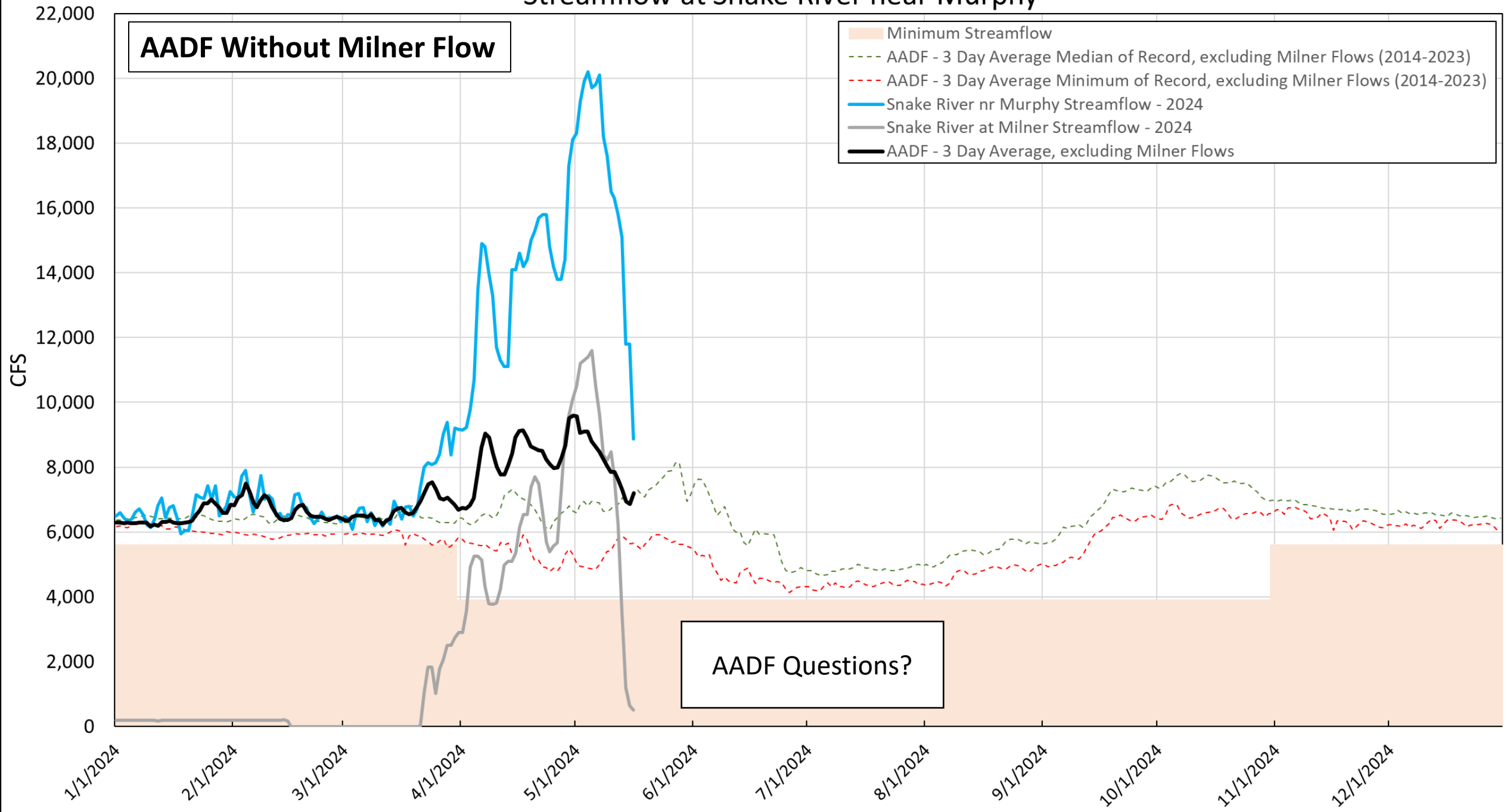
May 17th, 2024



# Streamflow at Snake River near Murphy



# Streamflow at Snake River near Murphy



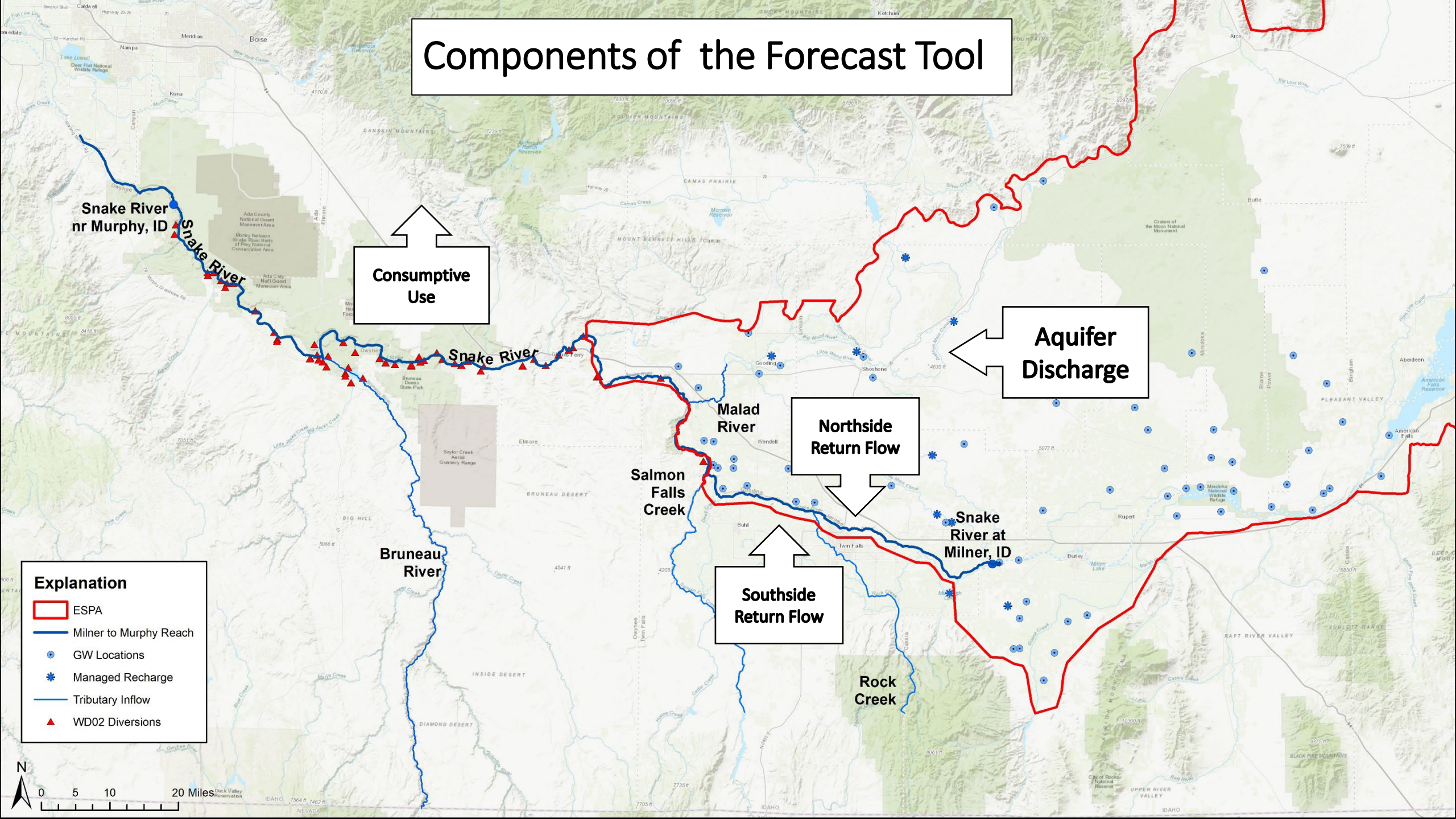
## Swan Falls Spring Forecast

Presented by Ethan Geisler

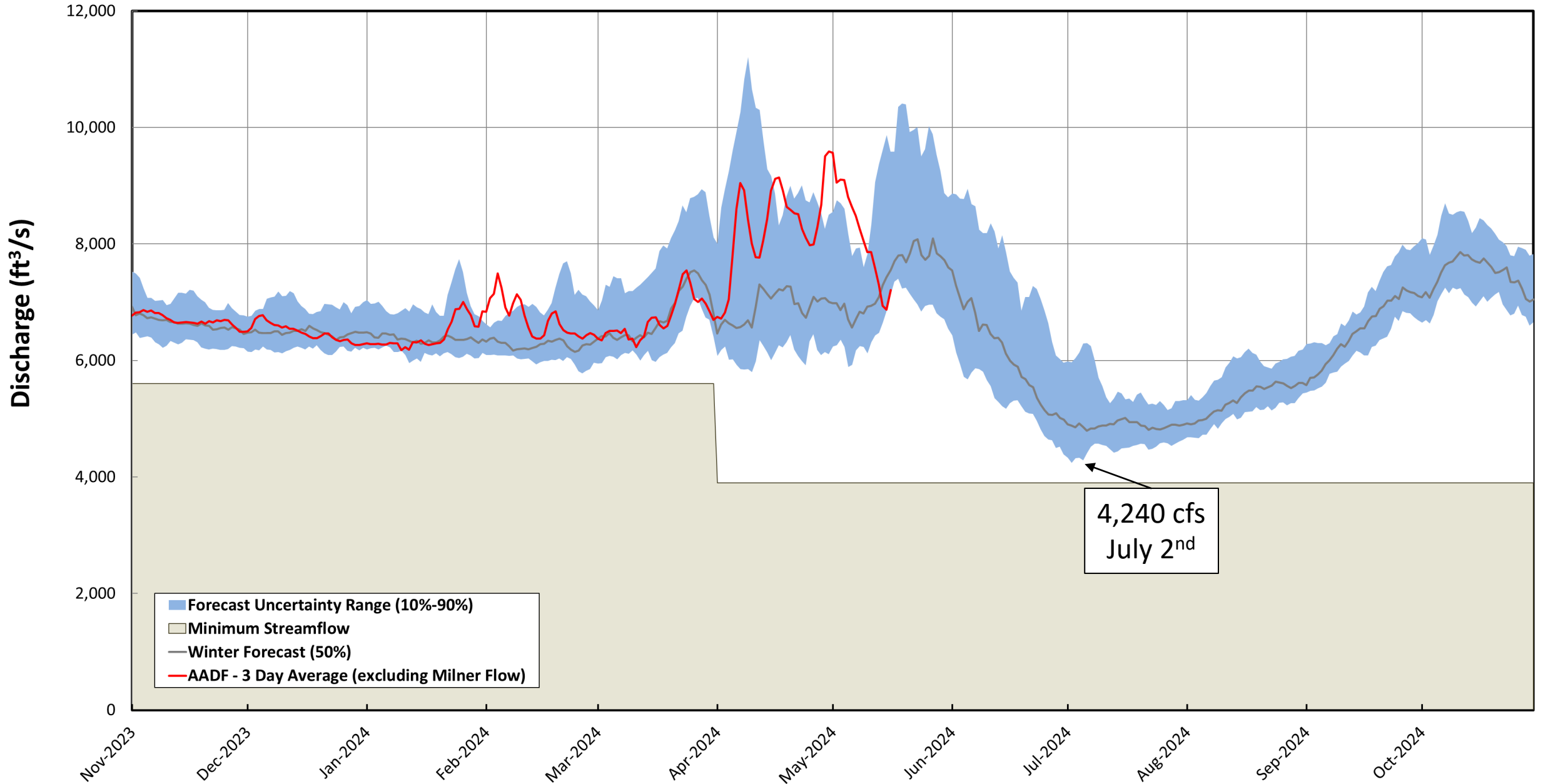
May 17th, 2024



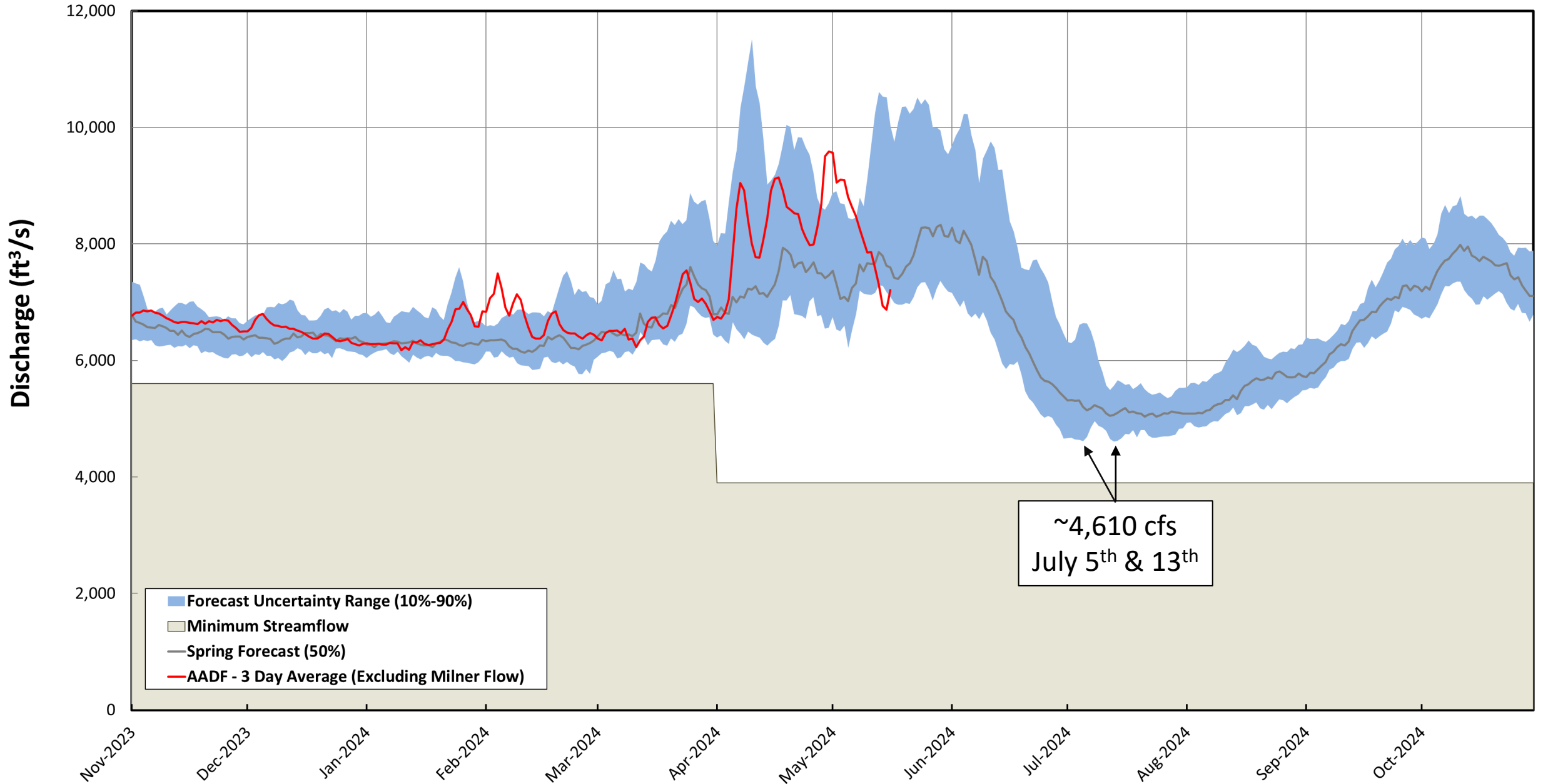
# Components of the Forecast Tool



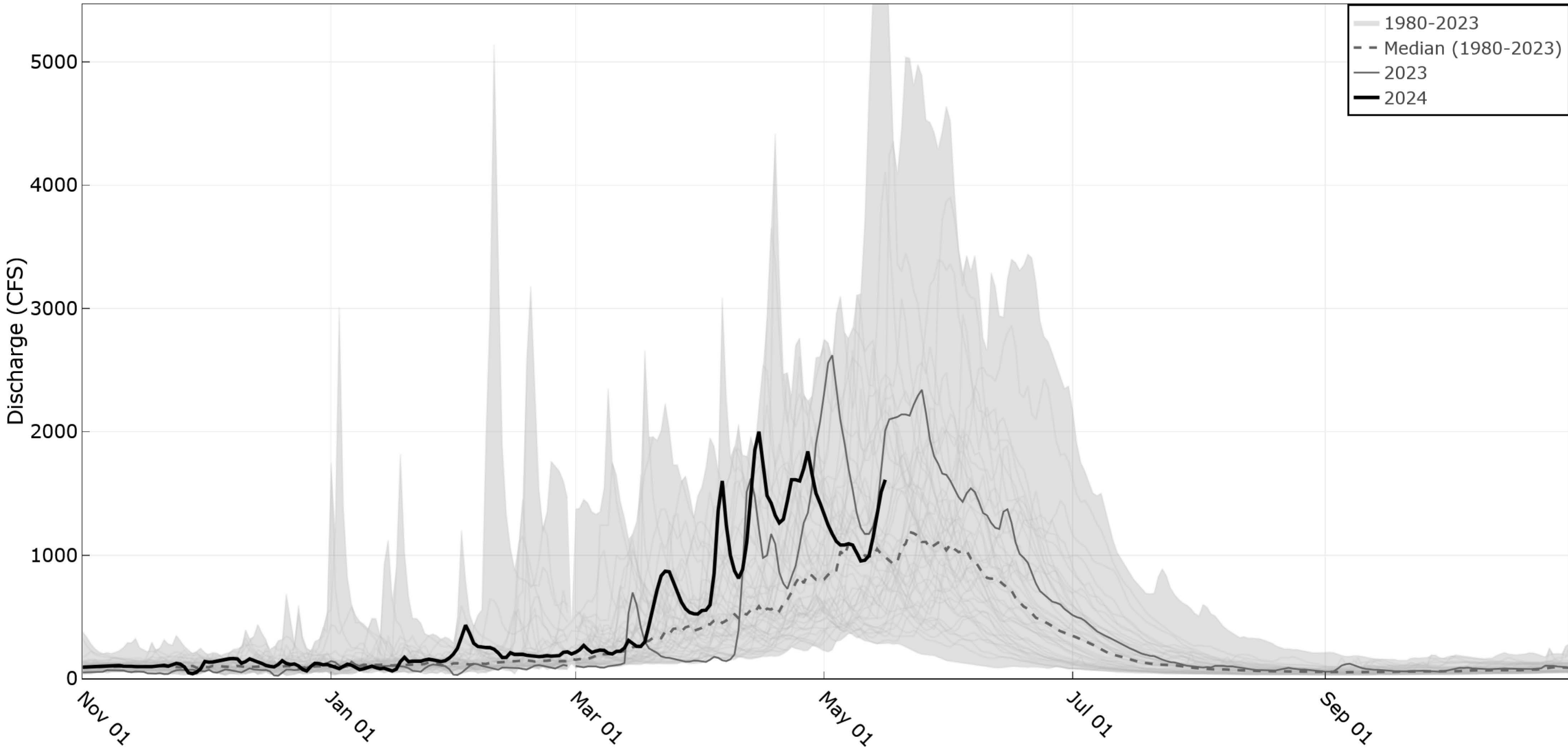
# 2024 Winter Forecast



# 2024 Spring Forecast

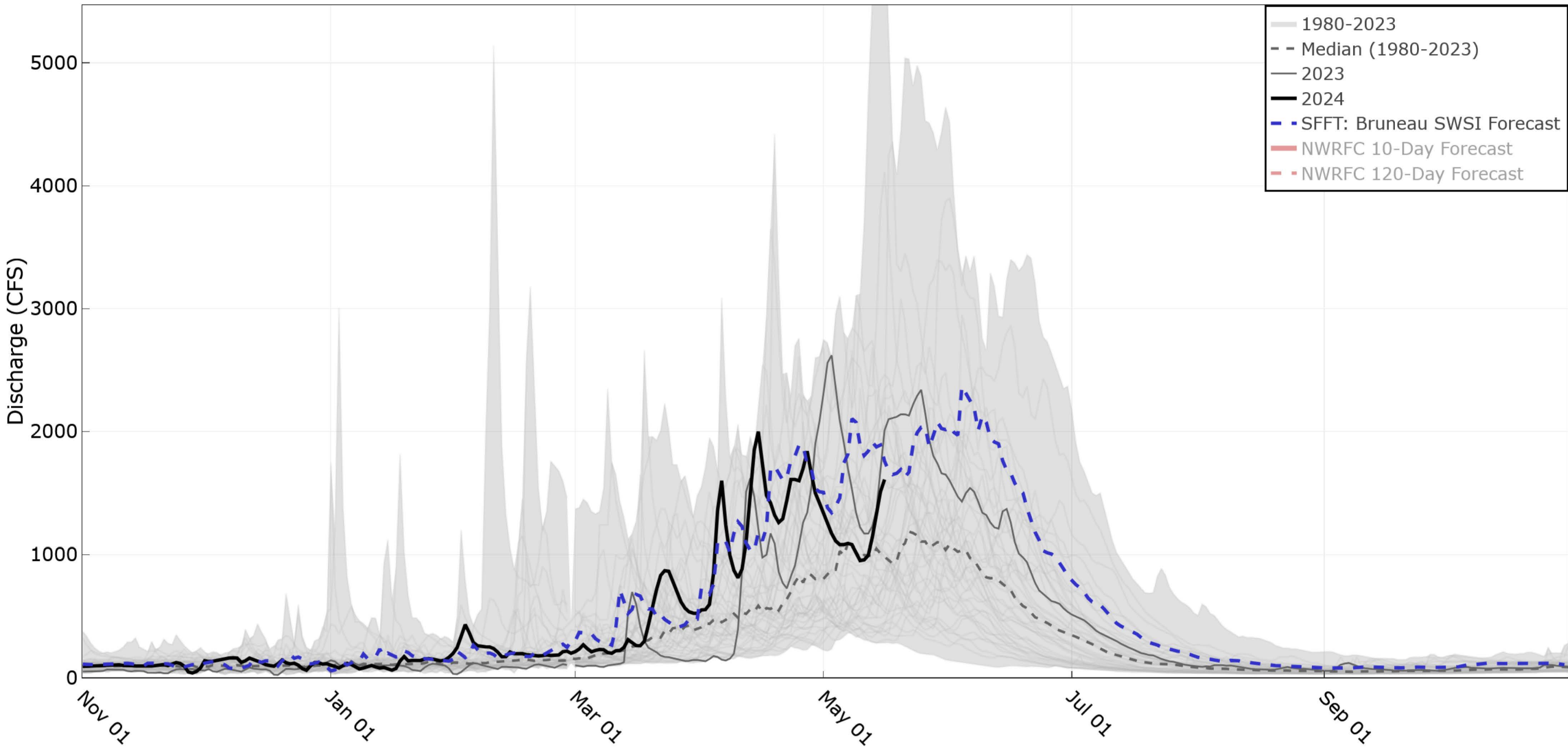


### Bruneau River nr Hot Springs

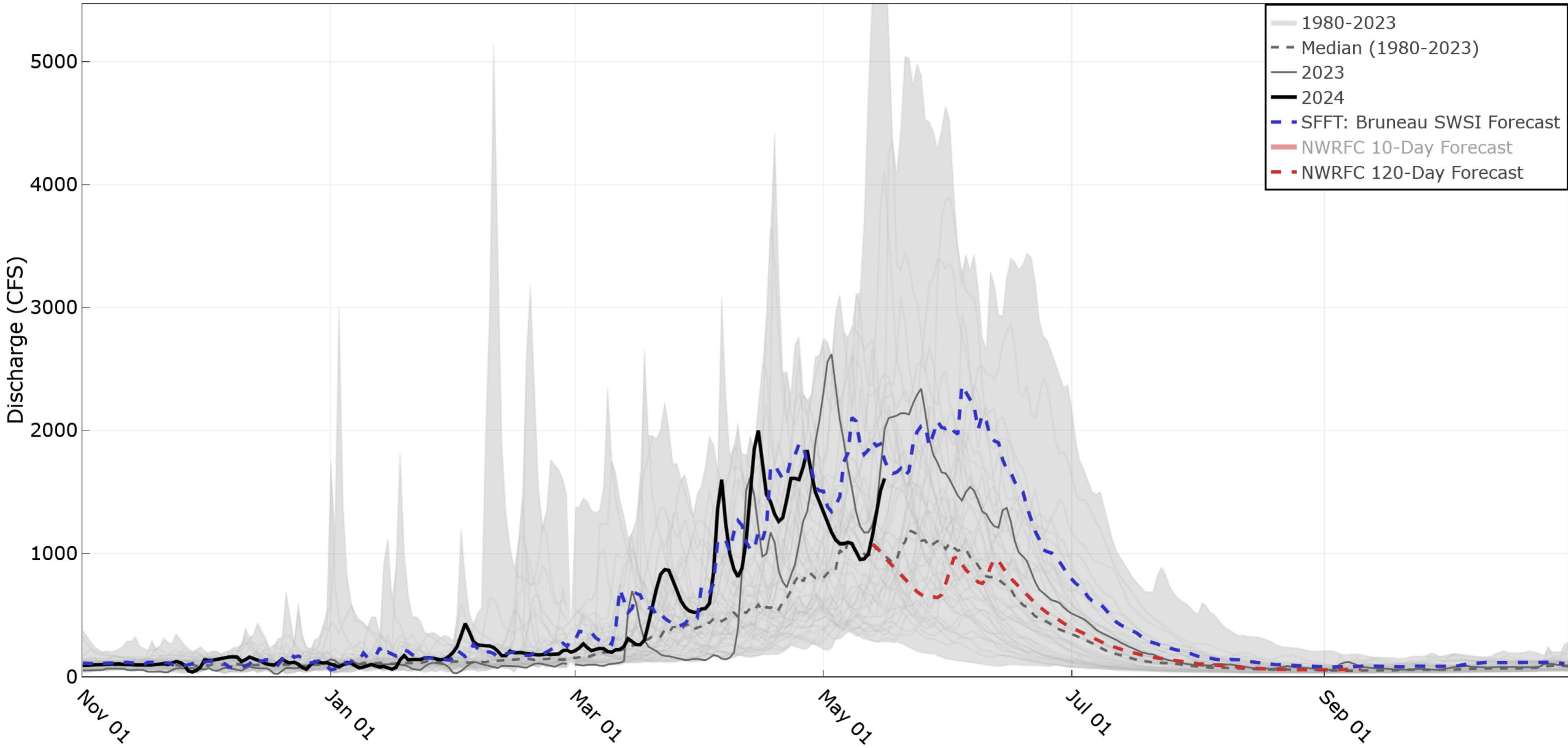




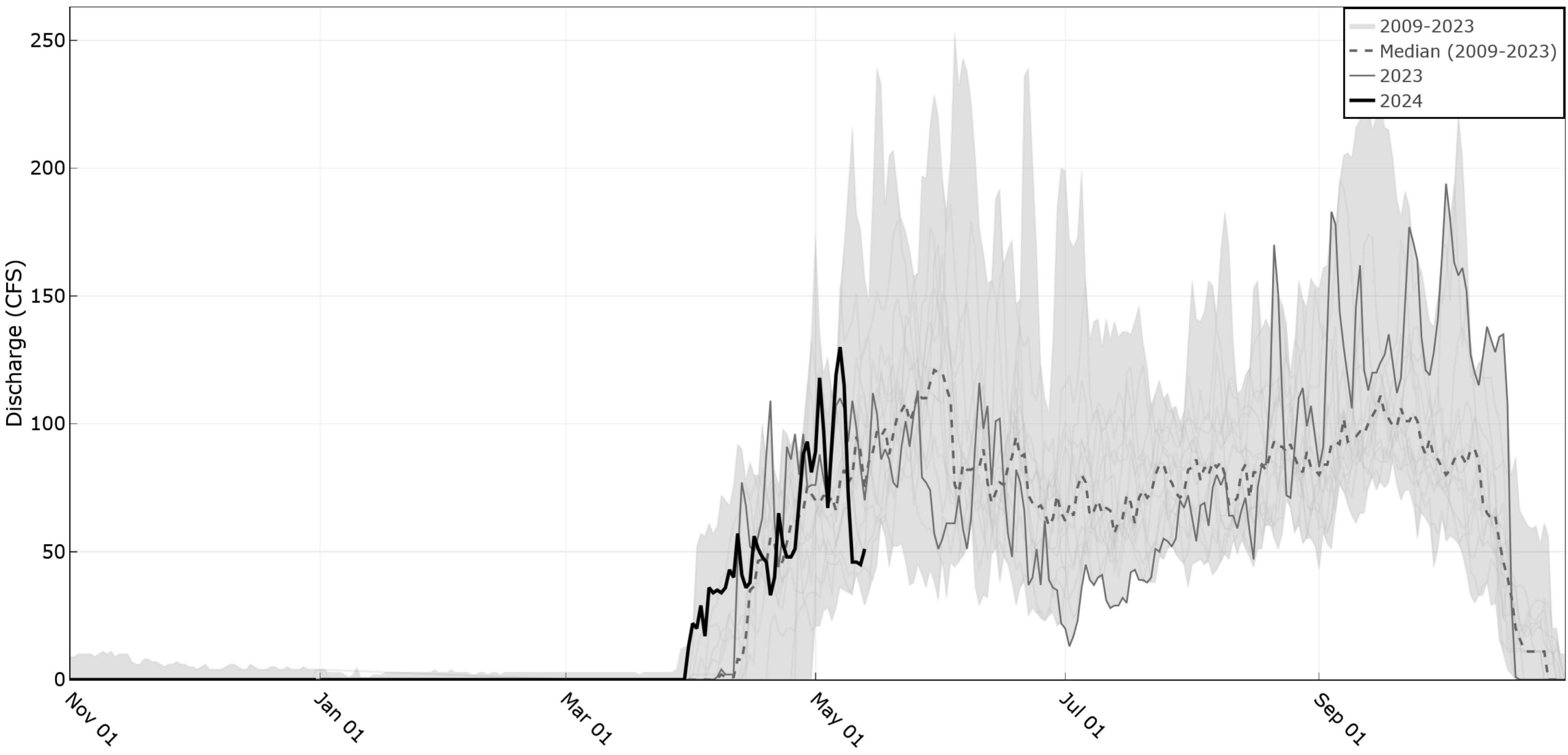
## Bruneau River nr Hot Springs



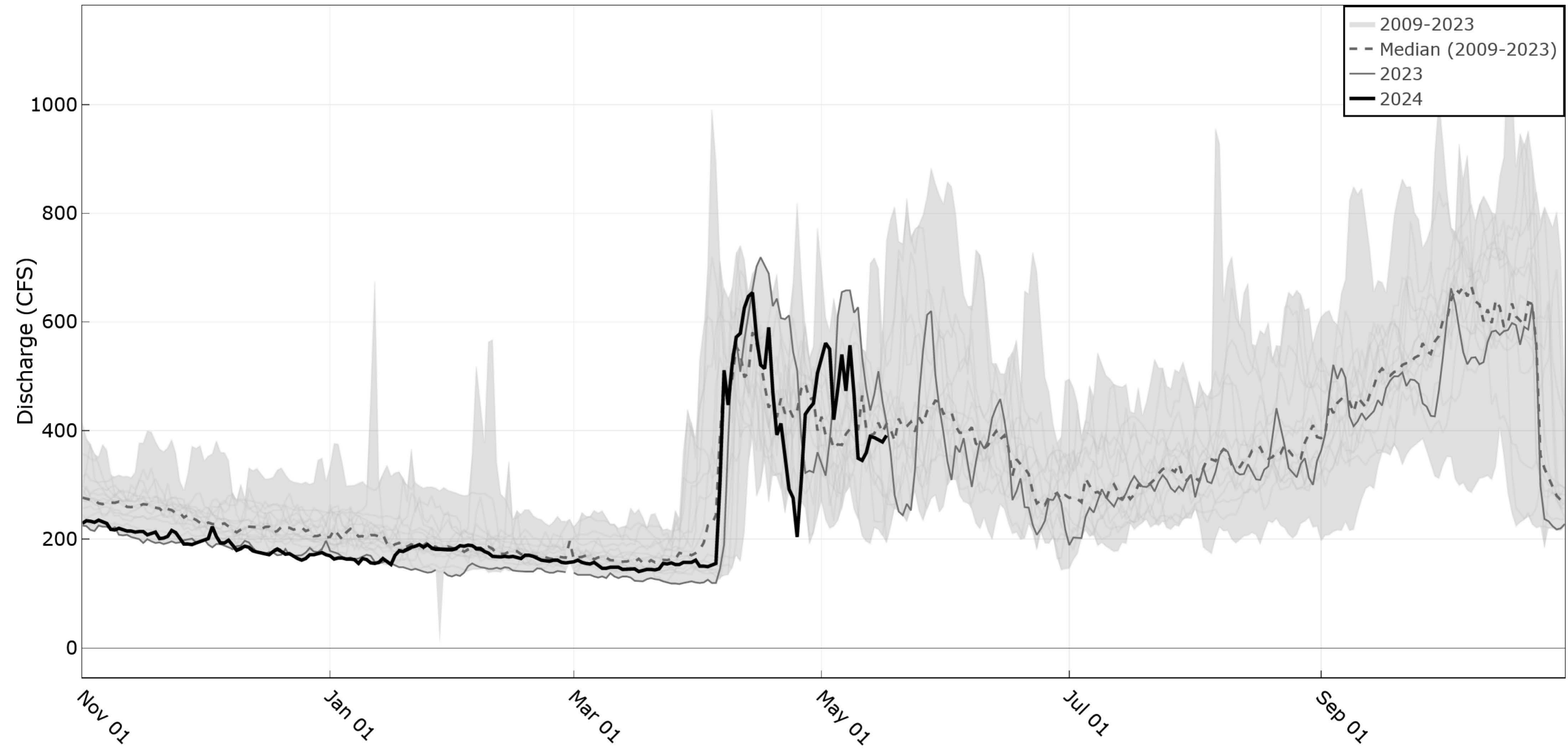
## Bruneau River nr Hot Springs



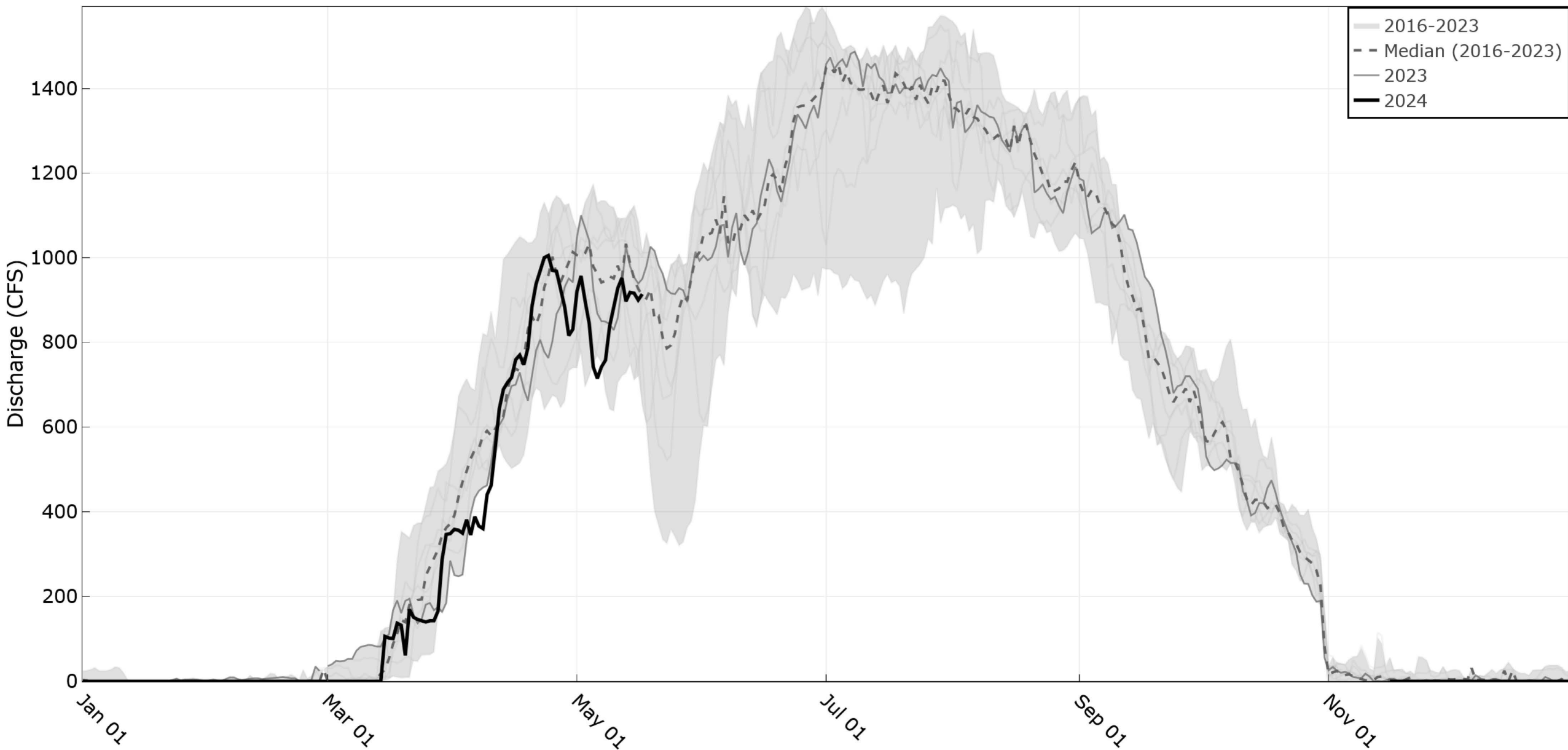
## Snake River Northside Return Flow



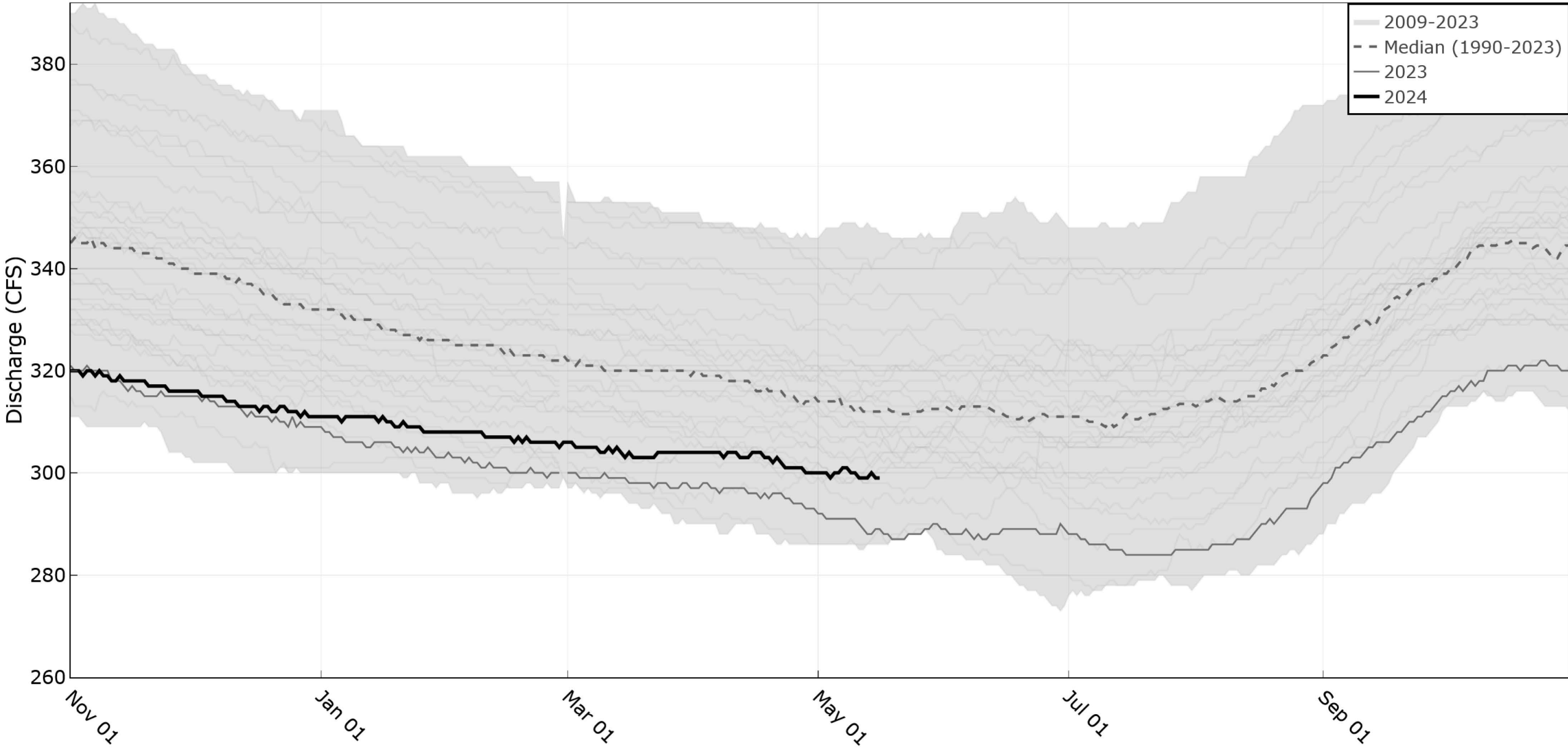
Snake River Southside Return Flows



WD02 Diversions



Box Canyon Spring nr Wendell



Spring synoptic preliminary well data summary:

\* **DTW = Depth to Water**

Year	Observed DTW minus Max DTW (2002 -2023)	Observed DTW minus Site Average DTW (2002 -2023)
2023 average	+ 3.61 ft	- 3.30 ft
2024 average	+ 5.54 ft	- 1.43 ft

- Below average water levels in 2023 & 2024
- 2024 water levels are higher on average than 2023

Forecast Tool Questions?

# Swan Falls Technical Working Group Updates

- *Question 5: “Analysis of the necessary ESPA levels required to maintain the minimum flow rate at the Snake River nr Murphy Gage during the low flow period”*
- Proposed method: Subset of groundwater wells to produce a regression-based model to analyze necessary ESPA levels to maintain minimum flow at the Snake River nr Murphy gage
- Working on Memo:
  - The memo will provide additional opportunities for the TWG to review and comment on the proposed method.
- Next TWG meeting is set for:
  - June 27<sup>th</sup>, 2024: check-in on AADF before low flow period

