

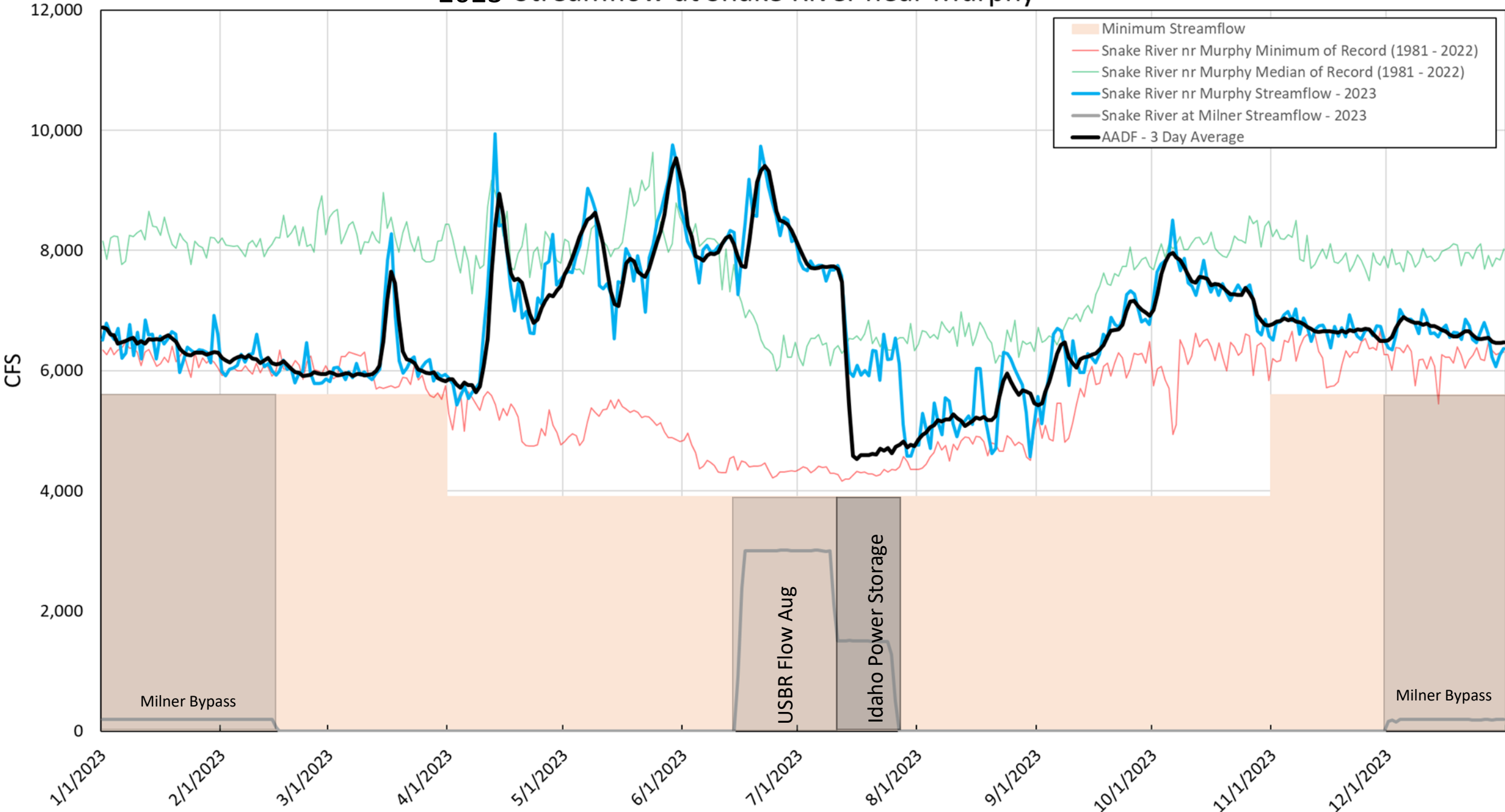
# Swan Falls AADF Update

Ethan Geisler

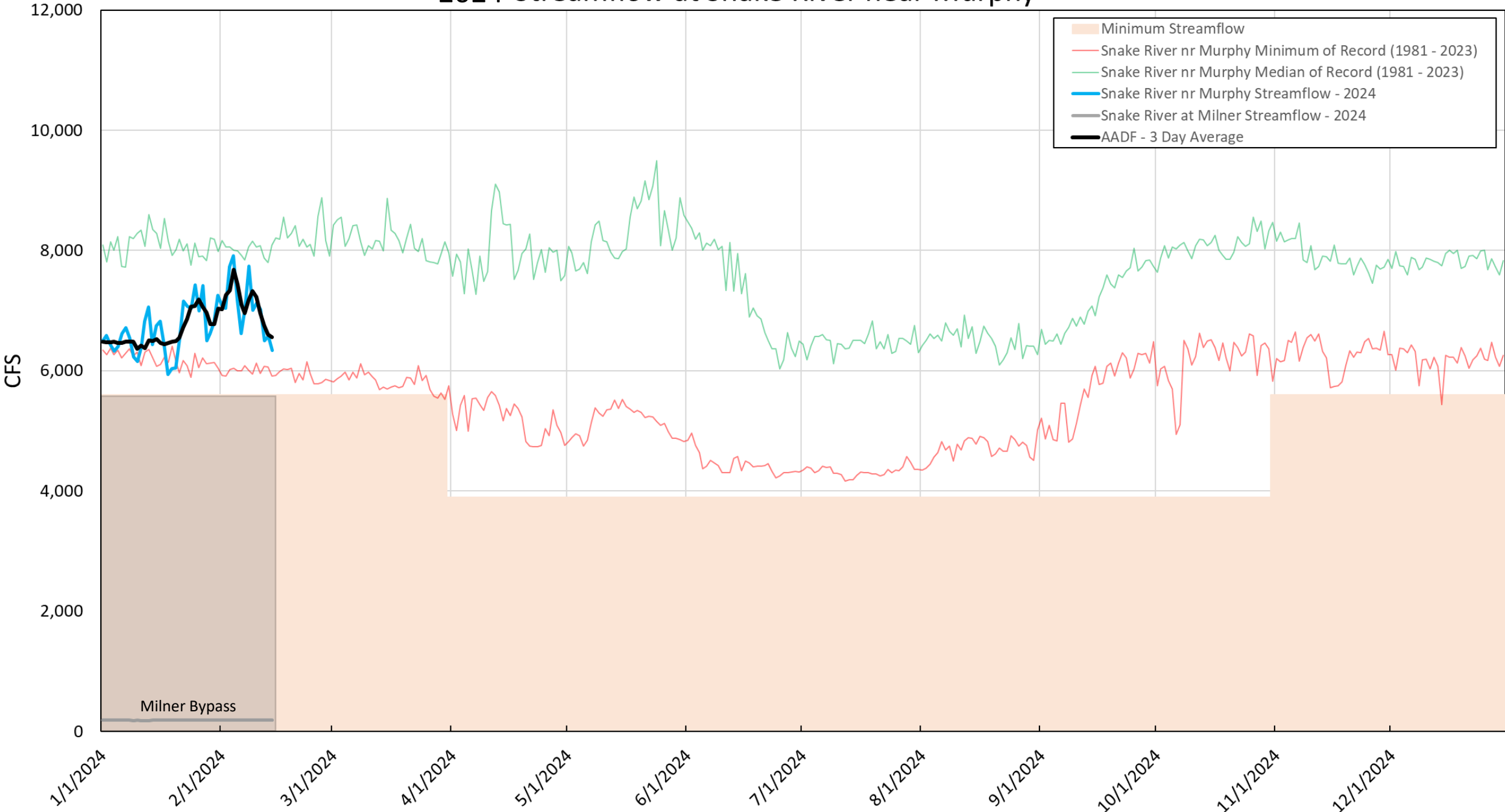
February 15<sup>th</sup>, 2024



# 2023 Streamflow at Snake River near Murphy

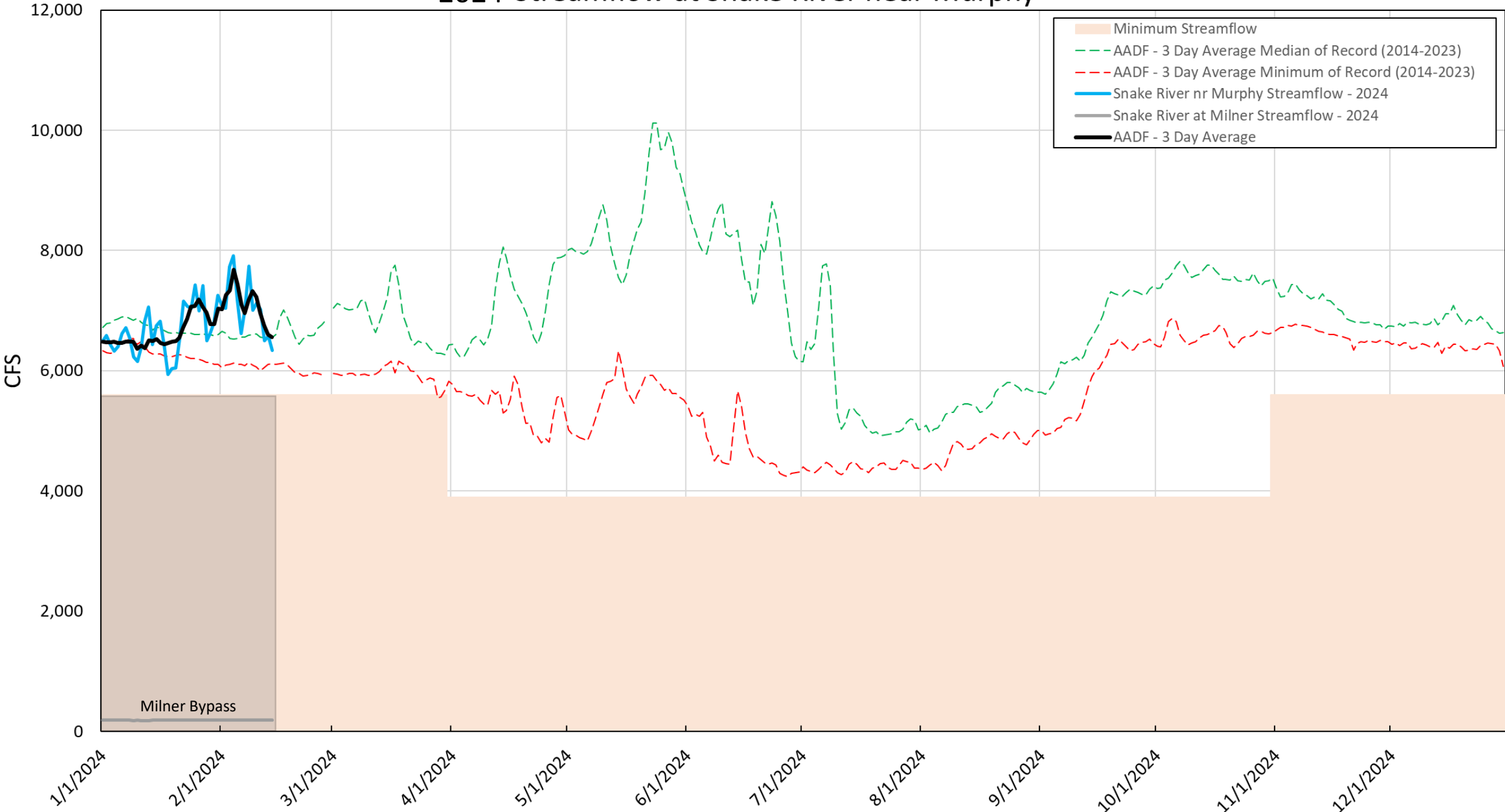


# 2024 Streamflow at Snake River near Murphy





# 2024 Streamflow at Snake River near Murphy



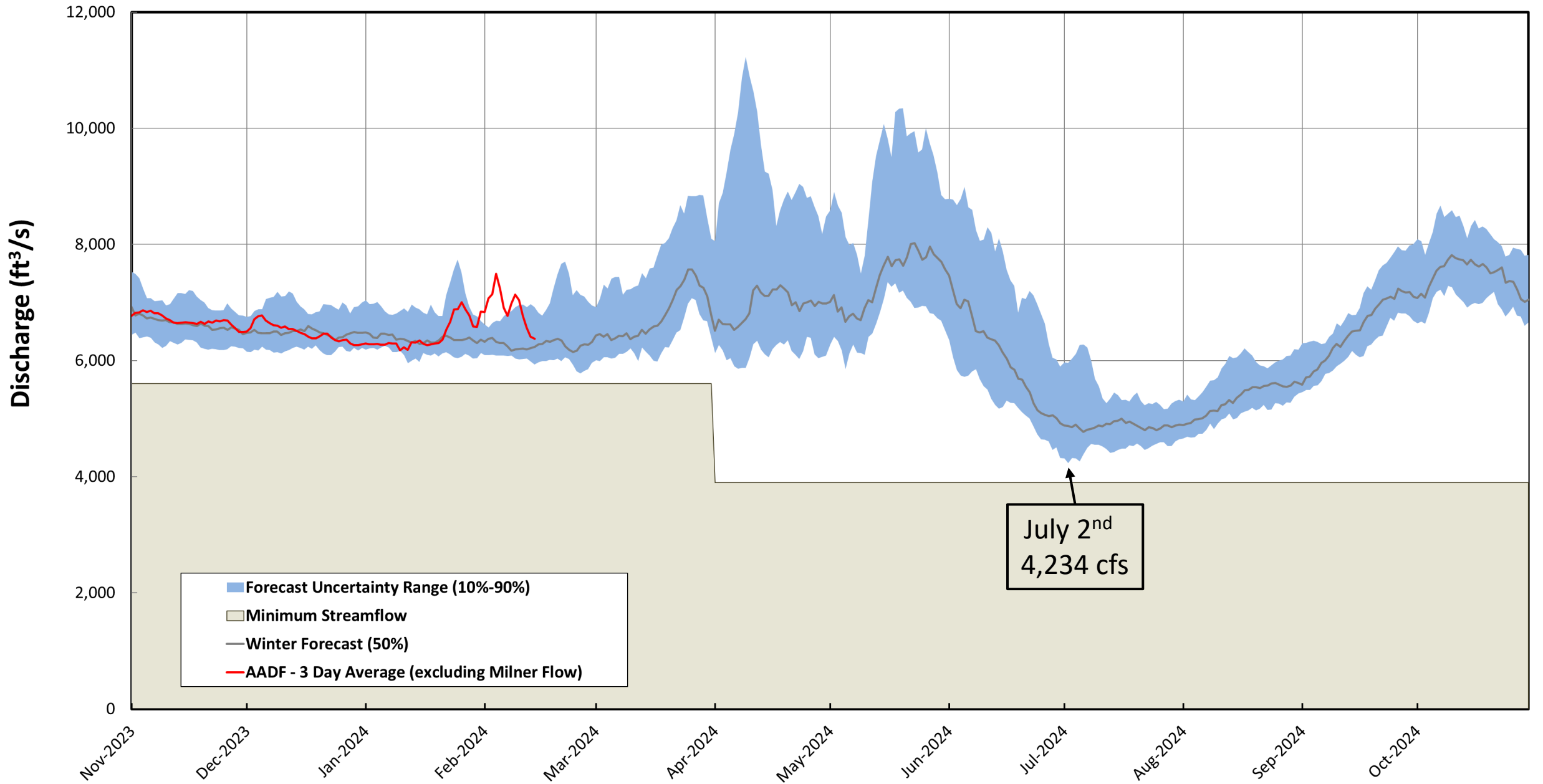
# Swan Falls Forecast Tool Update

Ethan Geisler

February 15<sup>th</sup>, 2023

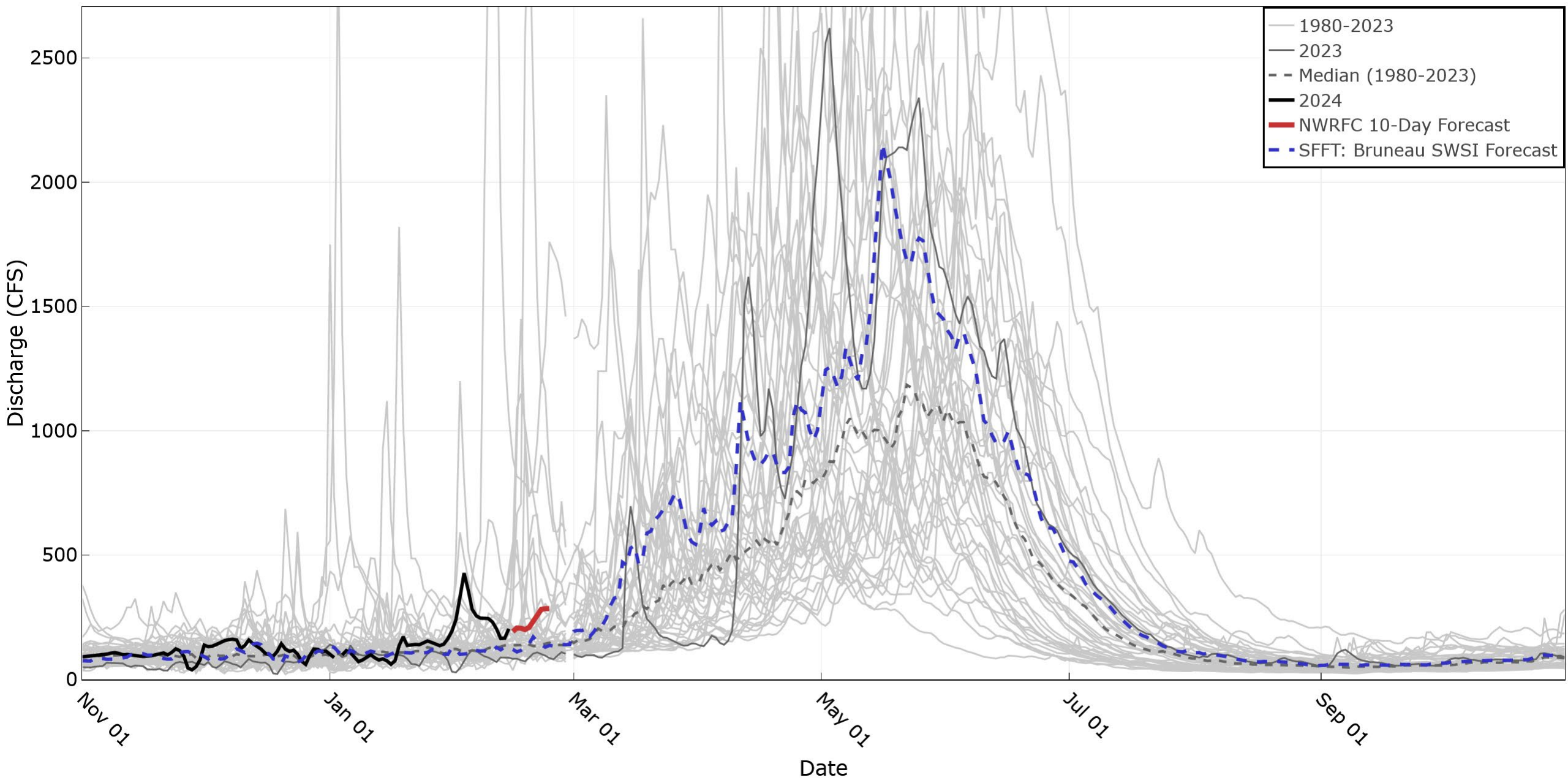


# 2024 Winter Forecast

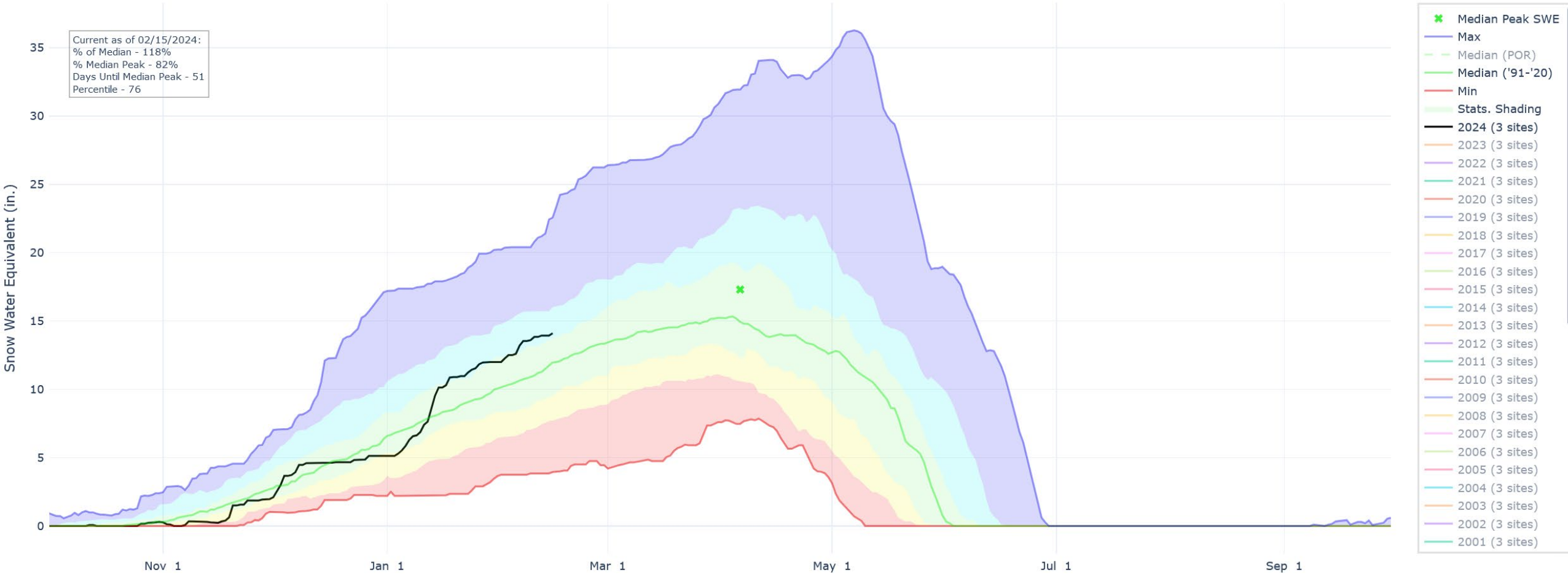




# Bruneau River nr Hot Springs

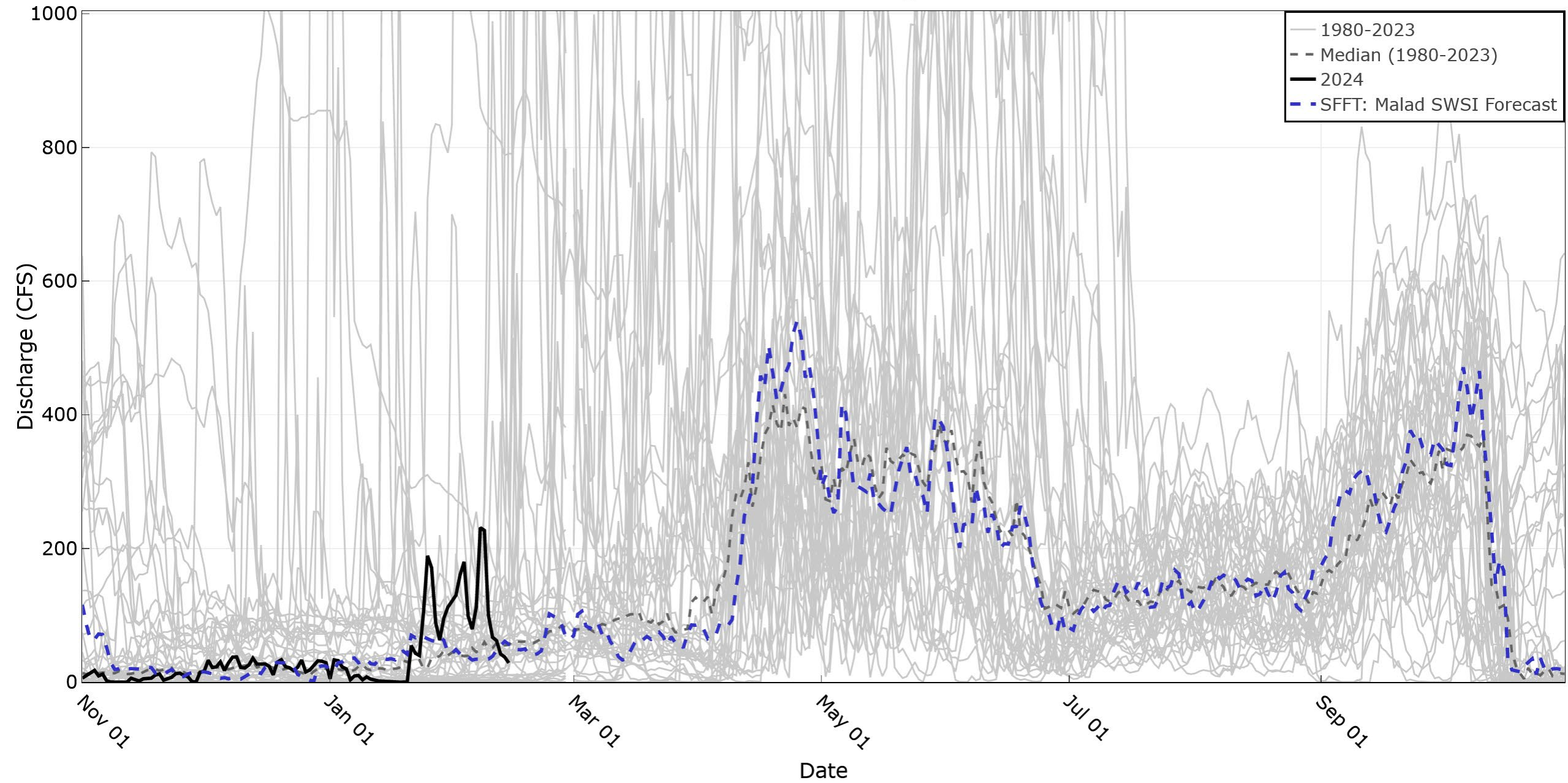


## SNOW WATER EQUIVALENT IN BRUNEAU

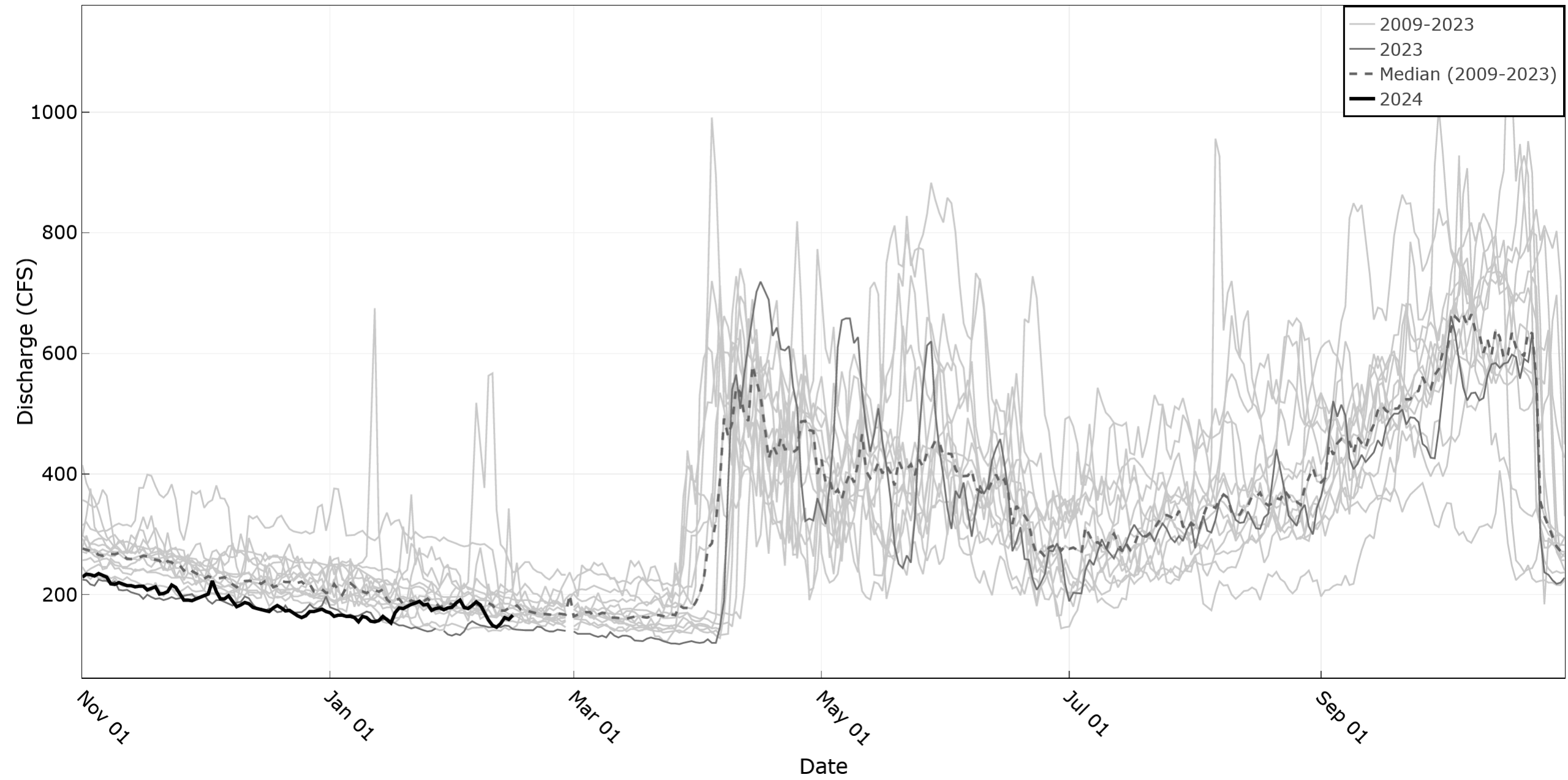




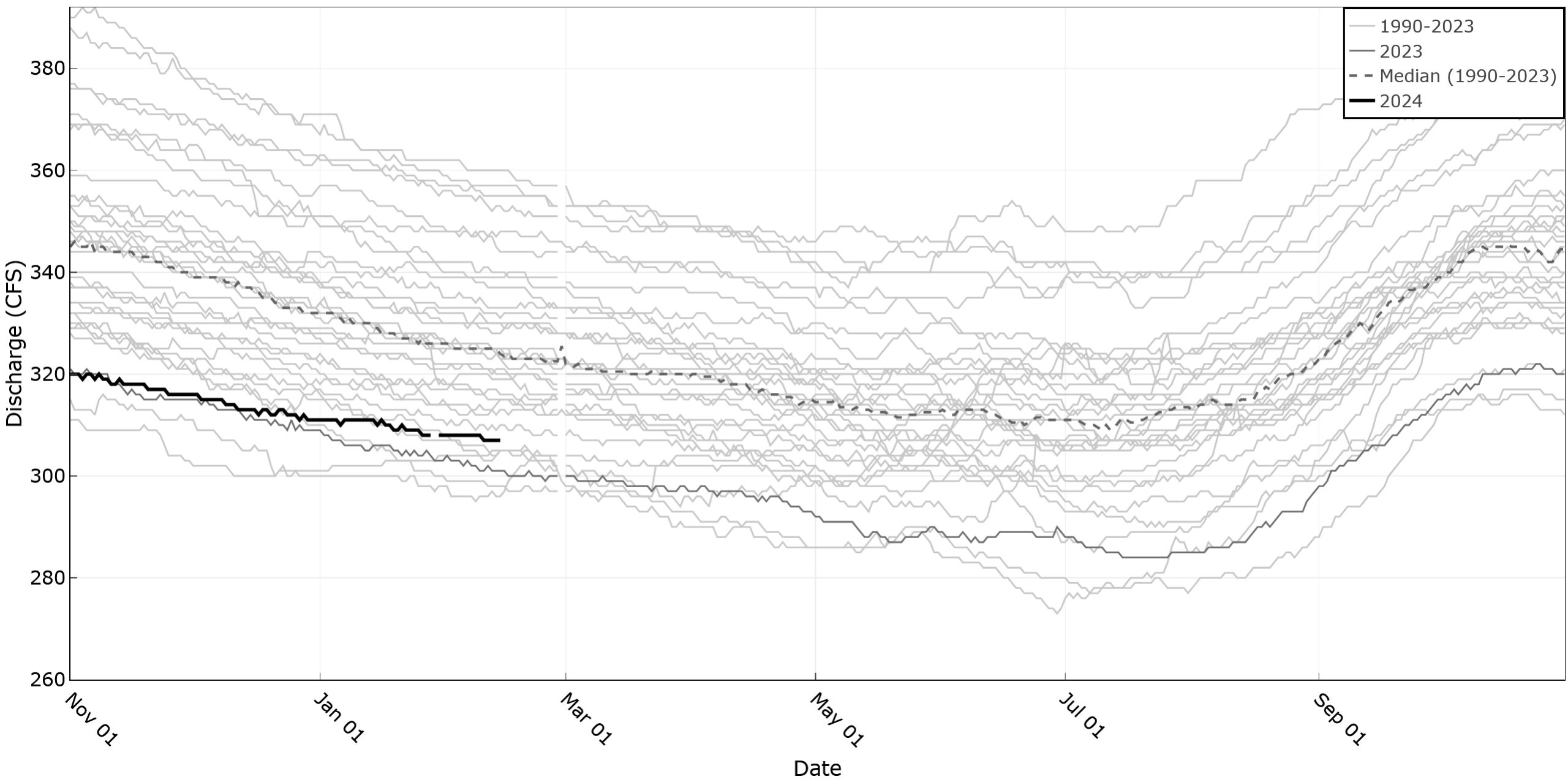
# Malad River nr Gooding



# Snake River Southside Return Flows



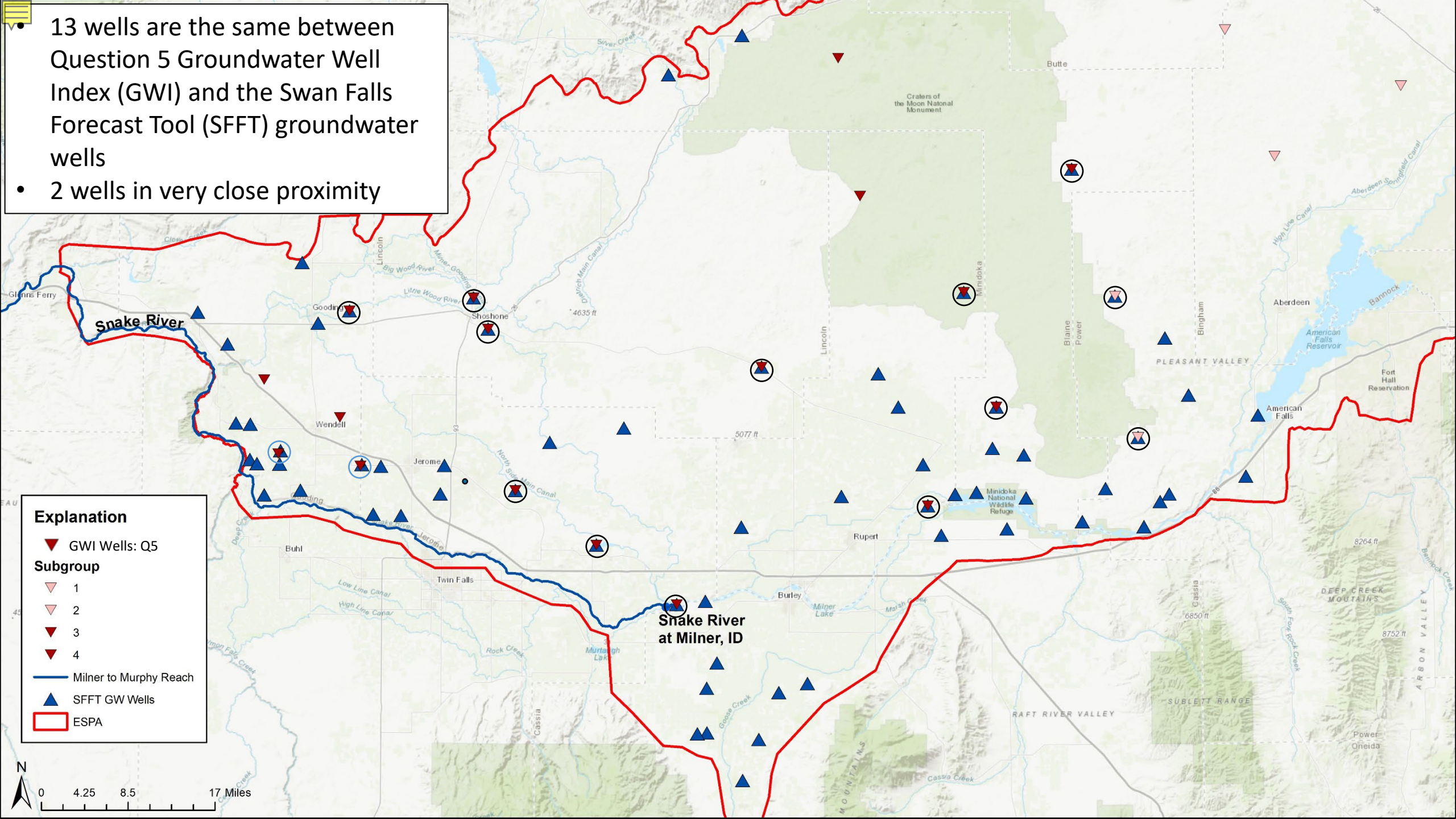
# Box Canyon Spring nr Wendell





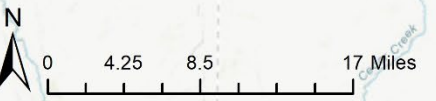
13 wells are the same between Question 5 Groundwater Well Index (GWI) and the Swan Falls Forecast Tool (SFFT) groundwater wells

- 2 wells in very close proximity



**Explanation**

- ▼ GWI Wells: Q5
- Subgroup**
  - ▼ 1
  - ▼ 2
  - ▼ 3
  - ▼ 4
- Milner to Murphy Reach
- ▲ SFFT GW Wells
- ESPA



Snake River at Milner, ID