

Milner to Swan Fall Reach Gain Statistics



Swan Falls Technical Group Meeting

August 03, 2023



**Milner to Swan Falls Reach Gains
Monthly Totals (acre-ft)**

	1993-2004 Average	2004	2005	2006	2007	2008	2009	2010	2011	2012	2013	2014	2015	2016	2017	2018	2019	2020	2021	2022	2023	2004-2023 Average
Jan	413,025	359,922	361,814	391,149	369,395	369,424	370,198	364,734	384,466	399,210	384,338	363,113	370,589	361,834	387,170	403,878	387,903	389,323	382,516	371,571	368,066	377,031
Feb	373,115	347,979	317,325	311,755	342,189	342,499	326,500	322,051	324,445	339,679	338,351	320,724	334,858	327,381	471,722	351,097	324,495	346,512	346,326	325,787	318,274	338,997
Mar	414,752	391,008	353,562	398,097	376,411	373,582	370,994	369,807	375,685	363,412	363,529	355,763	353,199	367,889	370,643	380,727	391,168	352,892	362,484	347,155	358,024	368,802
Apr	361,940	299,963	293,906	341,848	316,350	319,790	275,430	325,585	353,552	376,913	287,438	309,531	290,556	308,323	363,192	344,246	356,801	331,310	320,255	309,418	338,213	323,131
May	345,889	313,208	340,472	371,166	300,708	290,839	340,582	348,213	343,669	327,430	269,344	284,967	305,412	314,567	389,956	337,256	394,525	373,404	316,713	321,937	305,535	329,495
Jun	315,781	262,393	276,435	273,454	260,536	287,908	289,633	325,514	355,498	256,383	255,556	225,453	264,398	259,108	292,722	345,376	323,735	313,244	269,640	301,539	274,002	285,626
Jul	312,536	268,409	262,801	277,792	260,841	244,294	325,327	275,240	254,249	292,168	255,072	271,262	284,703	270,776	273,912	263,521	297,769	305,510	269,344	248,459	257,053	272,925
Aug	330,601	298,022	293,809	322,677	310,509	310,964	316,313	327,160	300,628	305,295	301,028	344,235	304,164	281,948	332,023	332,085	325,641	337,336	315,077	274,832		312,302
Sep	378,993	337,878	340,259	359,354	352,659	346,721	350,333	338,039	347,756	351,541	355,373	365,128	346,322	372,748	371,100	363,733	385,476	382,143	362,341	331,707		355,822
Oct	437,415	372,516	376,235	393,806	386,213	388,629	406,814	397,043	445,104	399,661	385,958	407,432	390,010	402,880	410,765	417,143	428,990	427,610	407,618	369,076		400,711
Nov	414,485	358,933	358,314	364,620	373,365	377,402	373,295	395,792	394,990	380,834	384,627	379,616	375,907	369,874	392,646	393,706	400,923	406,402	384,158	379,537		381,313
Dec	415,559	366,850	376,558	367,680	377,964	380,573	367,484	400,231	395,226	401,989	384,336	384,028	379,477	376,281	387,142	388,100	398,534	383,488	379,727	375,910		382,715
May-Sept Total	1,683,800	1,479,910	1,513,777	1,604,443	1,485,253	1,480,726	1,622,189	1,614,166	1,601,800	1,532,816	1,436,372	1,491,045	1,504,999	1,499,148	1,659,713	1,641,971	1,727,145	1,711,638	1,533,114	1,478,474		1,556,171
Annual Total	4,514,091	3,977,081	3,951,490	4,173,397	4,027,140	4,032,626	4,112,903	4,189,410	4,275,267	4,194,516	3,964,949	4,011,253	3,999,595	4,013,611	4,442,993	4,320,868	4,415,958	4,349,175	4,116,199	3,956,929		4,128,869
Annual Average	376,174	331,423	329,291	347,783	335,595	336,052	342,742	349,117	356,272	349,543	330,412	334,271	333,300	334,468	370,249	360,072	367,997	362,431	343,017	329,744		344,072

Notes:

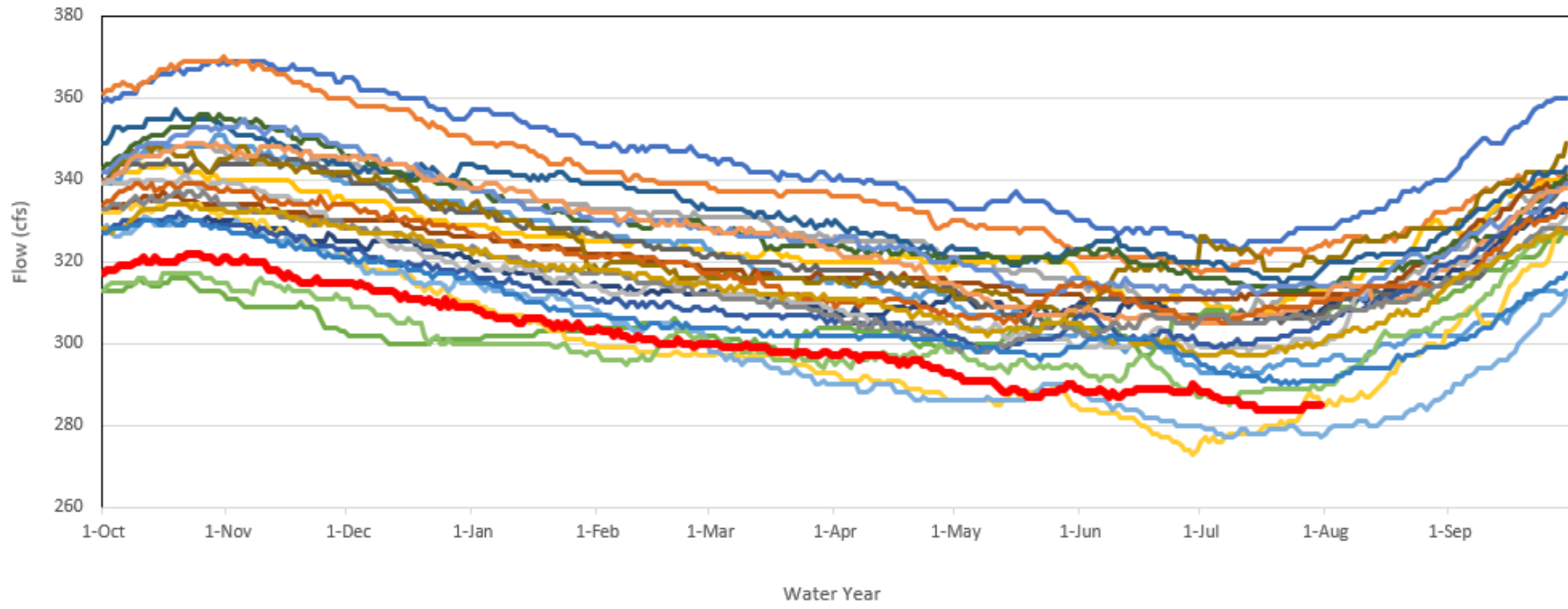
Milner to Swan Falls Reach Gain (acre-ft) = Snake River near Murphy - Snake River at Milner (Total Flow) - Rock creek Ab Hwy 30/93 Xling at Twin Falls - Salmon Falls Creek Nr Hagerman - Malad River Nr Gooding - Brueanu River Nr Hot Springs

Rows colored for each month ranging from minimum (Red) to maximum (Green) from CY 2004 to CY 2023

Data Source: USGS and IPC (approved and provisional)



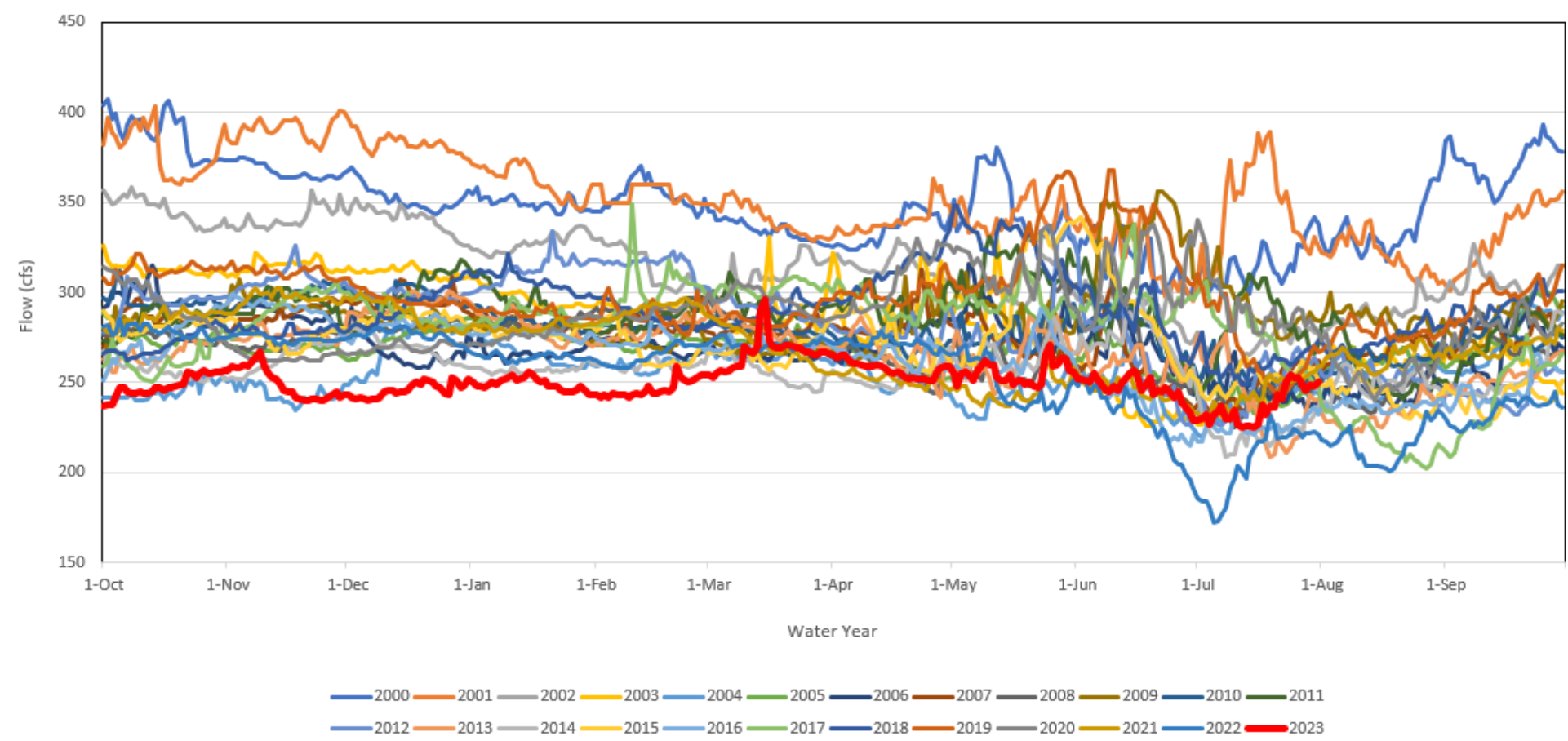
USGS 13095500 BOX CANYON SPRINGS NR WENDELL ID



- 2000
- 2001
- 2002
- 2003
- 2004
- 2005
- 2006
- 2007
- 2008
- 2009
- 2010
- 2011
- 2012
- 2013
- 2014
- 2015
- 2016
- 2017
- 2018
- 2019
- 2020
- 2021
- 2022
- 2023

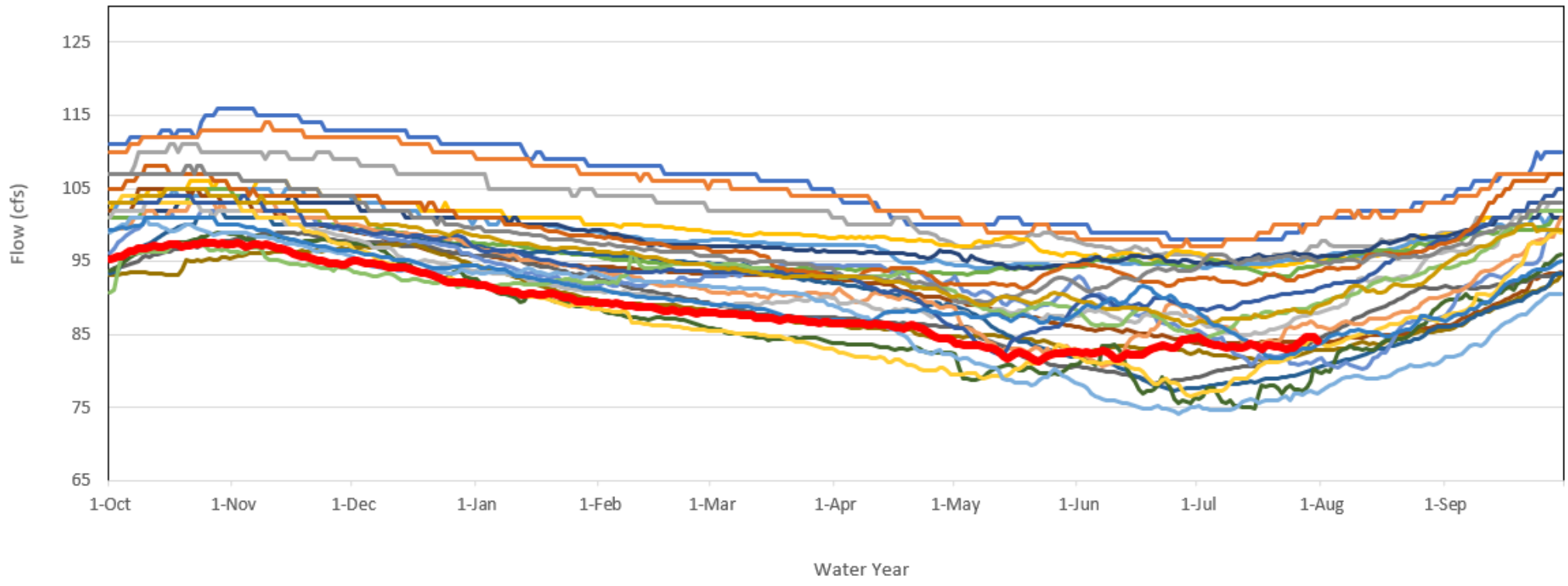


USGS 13075983 Spring Creek at Sheepskin RD NR Fort Hall ID





USGS 13095175 BRIGGS SPRING AT HEAD NEAR BUHL ID



- 2000
- 2001
- 2002
- 2003
- 2004
- 2005
- 2006
- 2007
- 2008
- 2009
- 2010
- 2011
- 2012
- 2013
- 2014
- 2015
- 2016
- 2017
- 2018
- 2019
- 2020
- 2021
- 2022
- 2023