

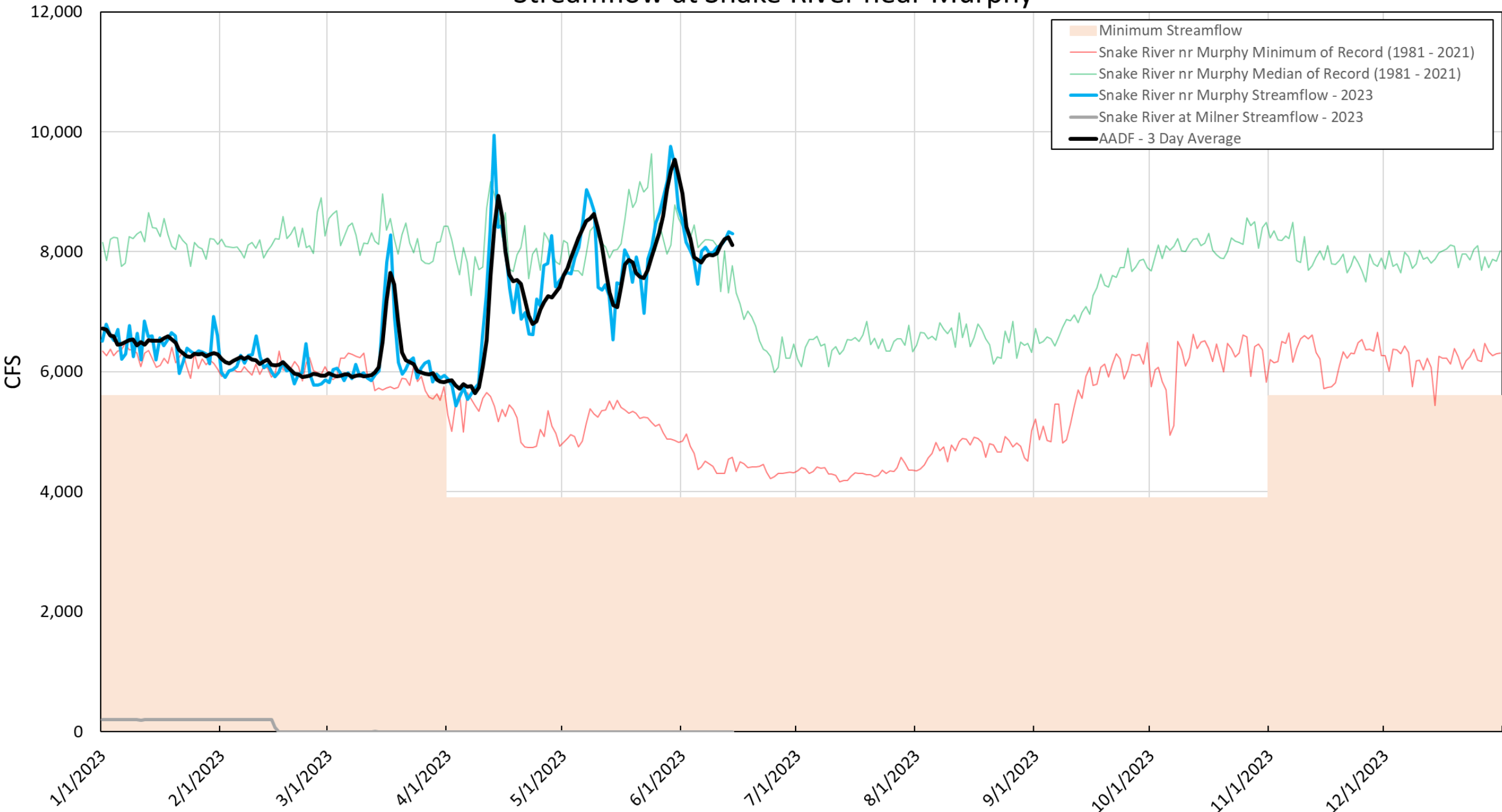
Swan Falls AADF Update

Presented by Ethan Geisler

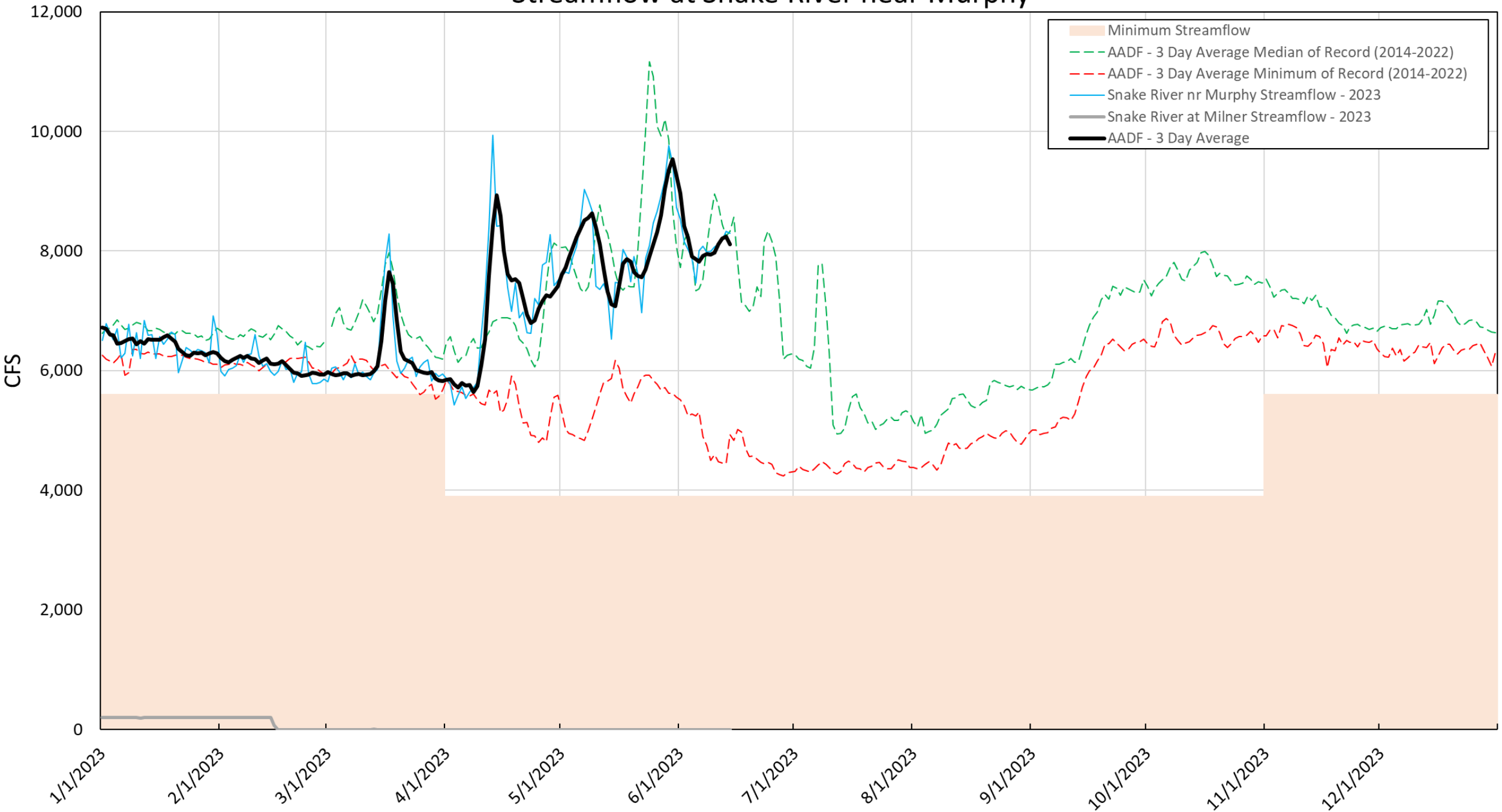
June 15th, 2023



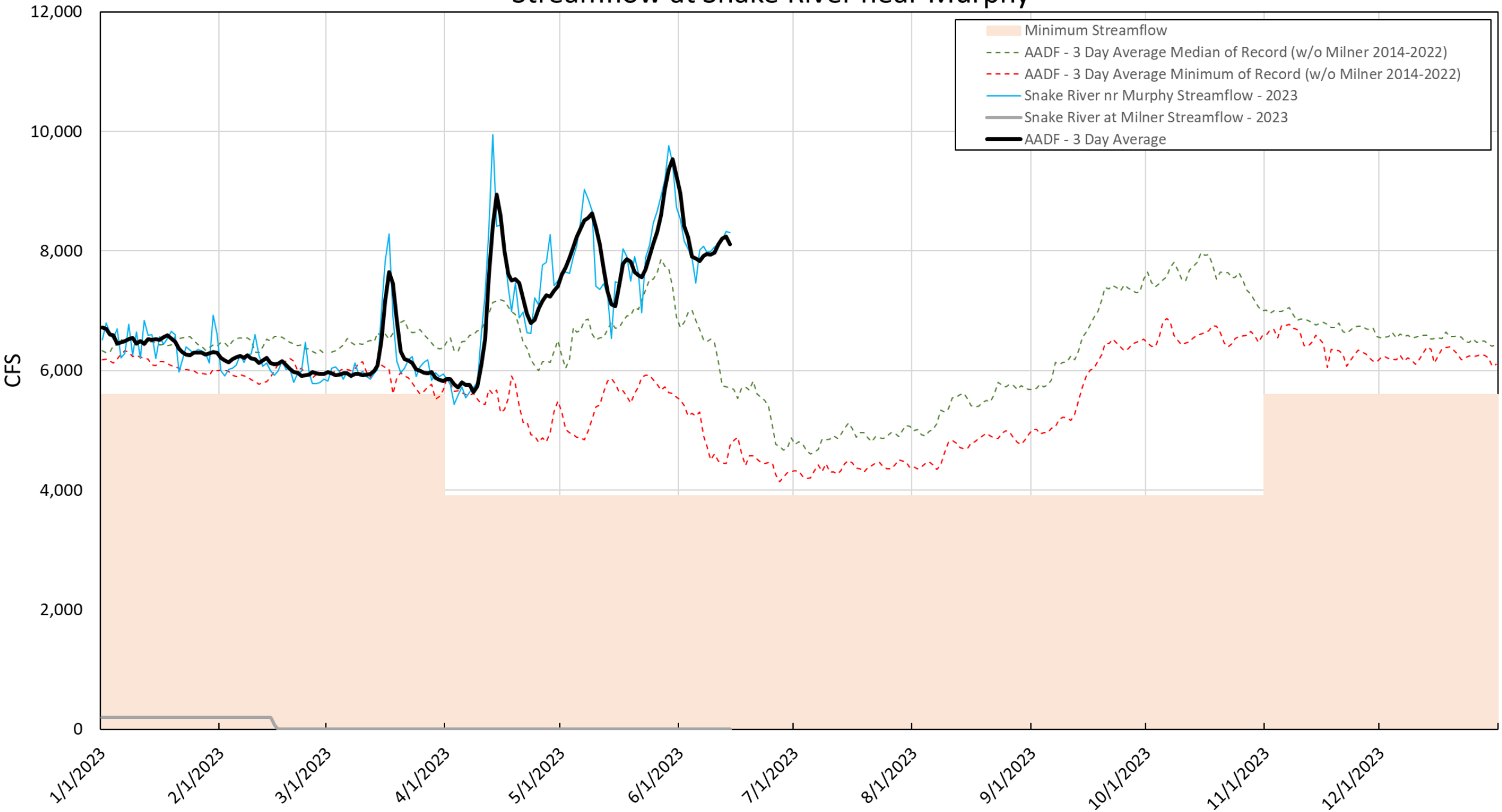
Streamflow at Snake River near Murphy



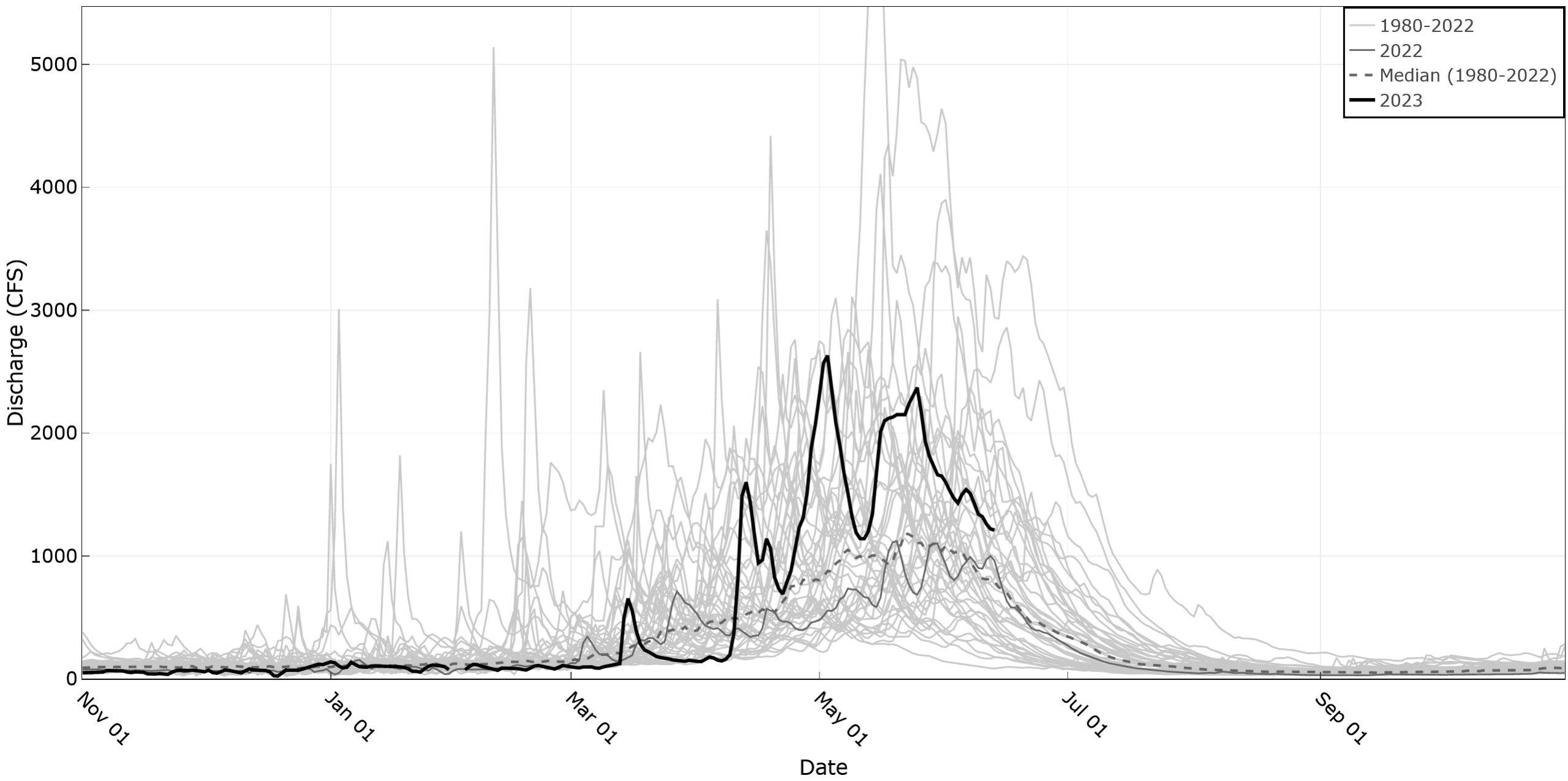
Streamflow at Snake River near Murphy



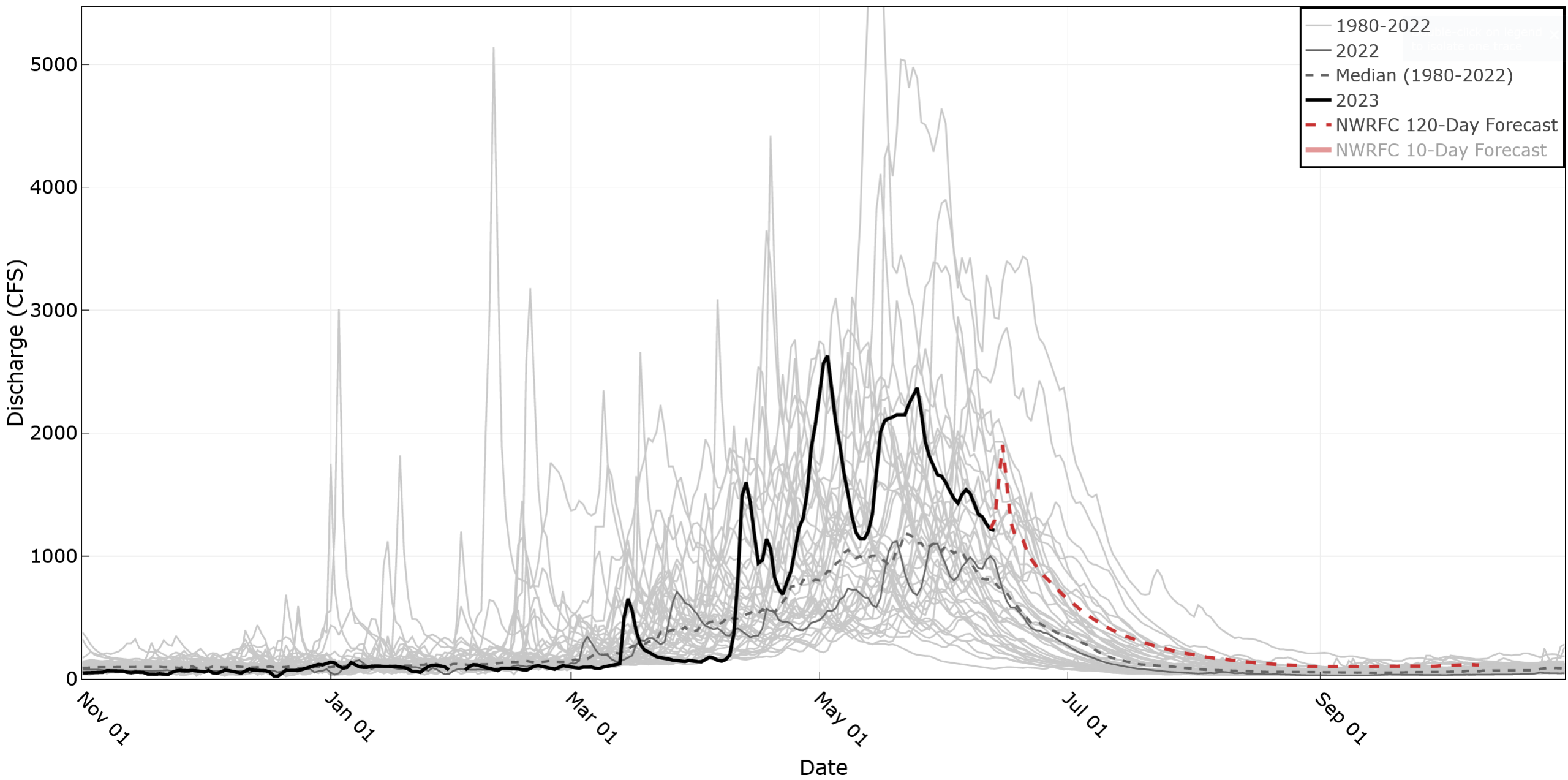
Streamflow at Snake River near Murphy



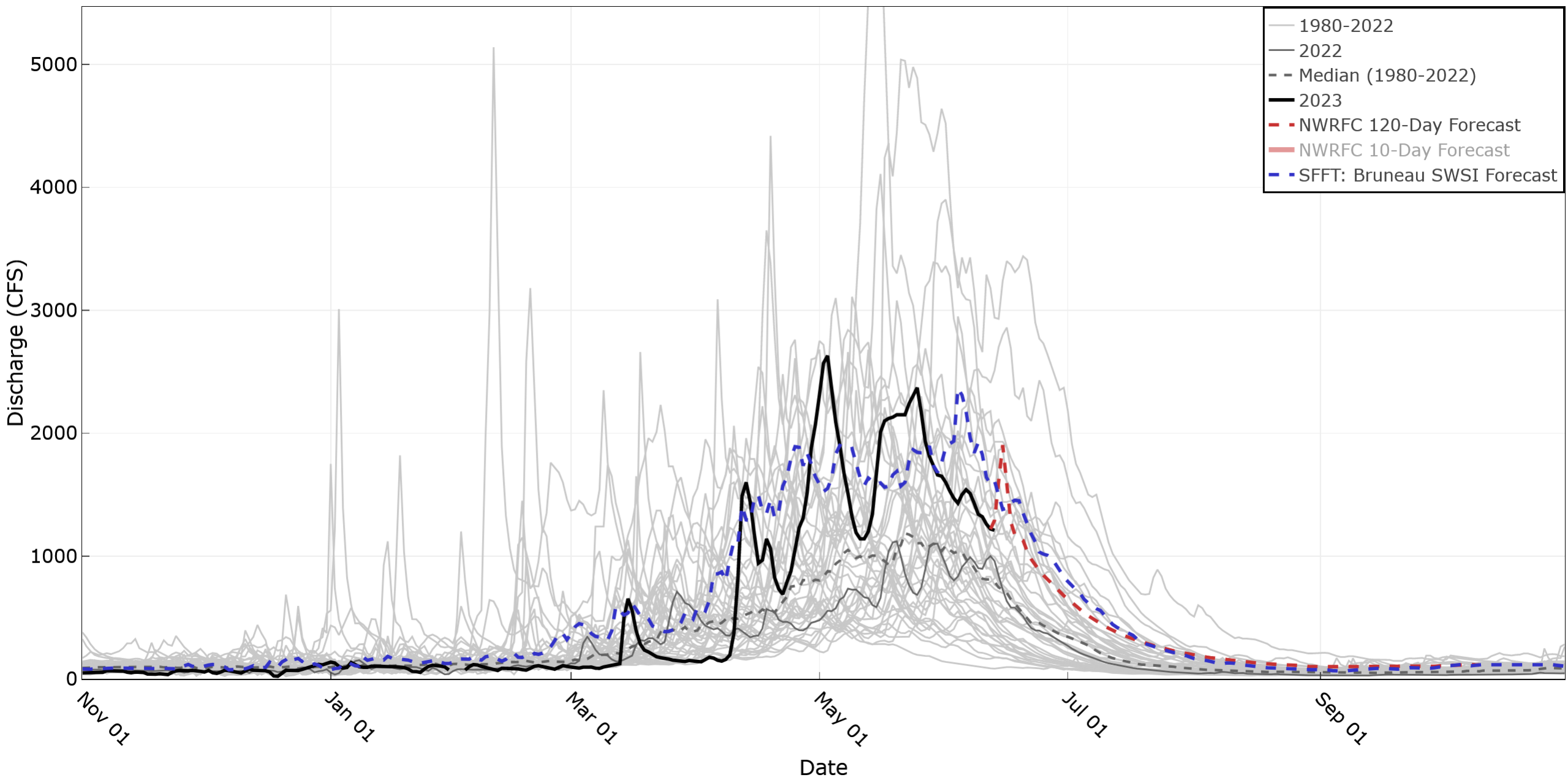
Bruneau River nr Hot Springs



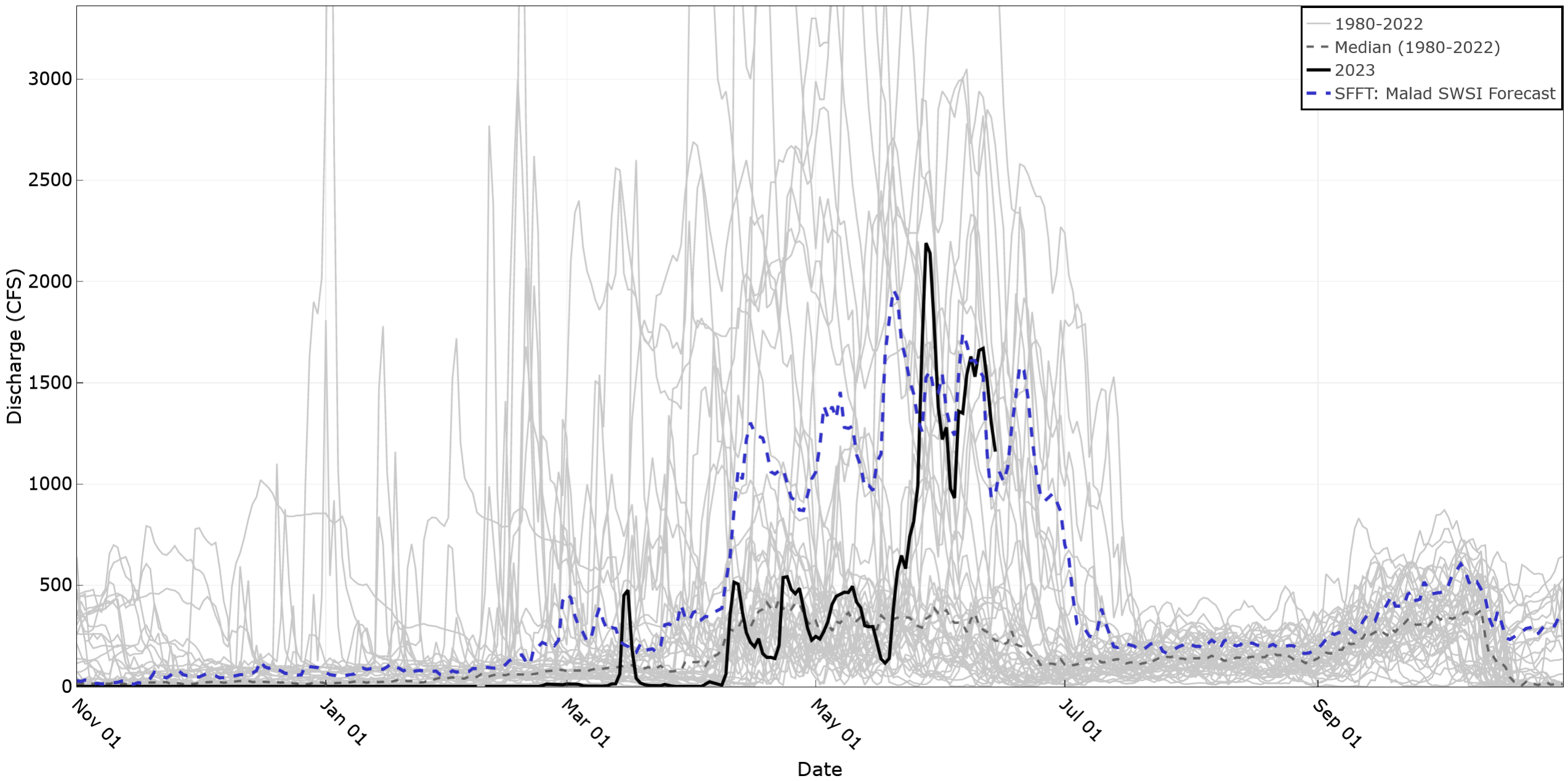
Bruneau River nr Hot Springs



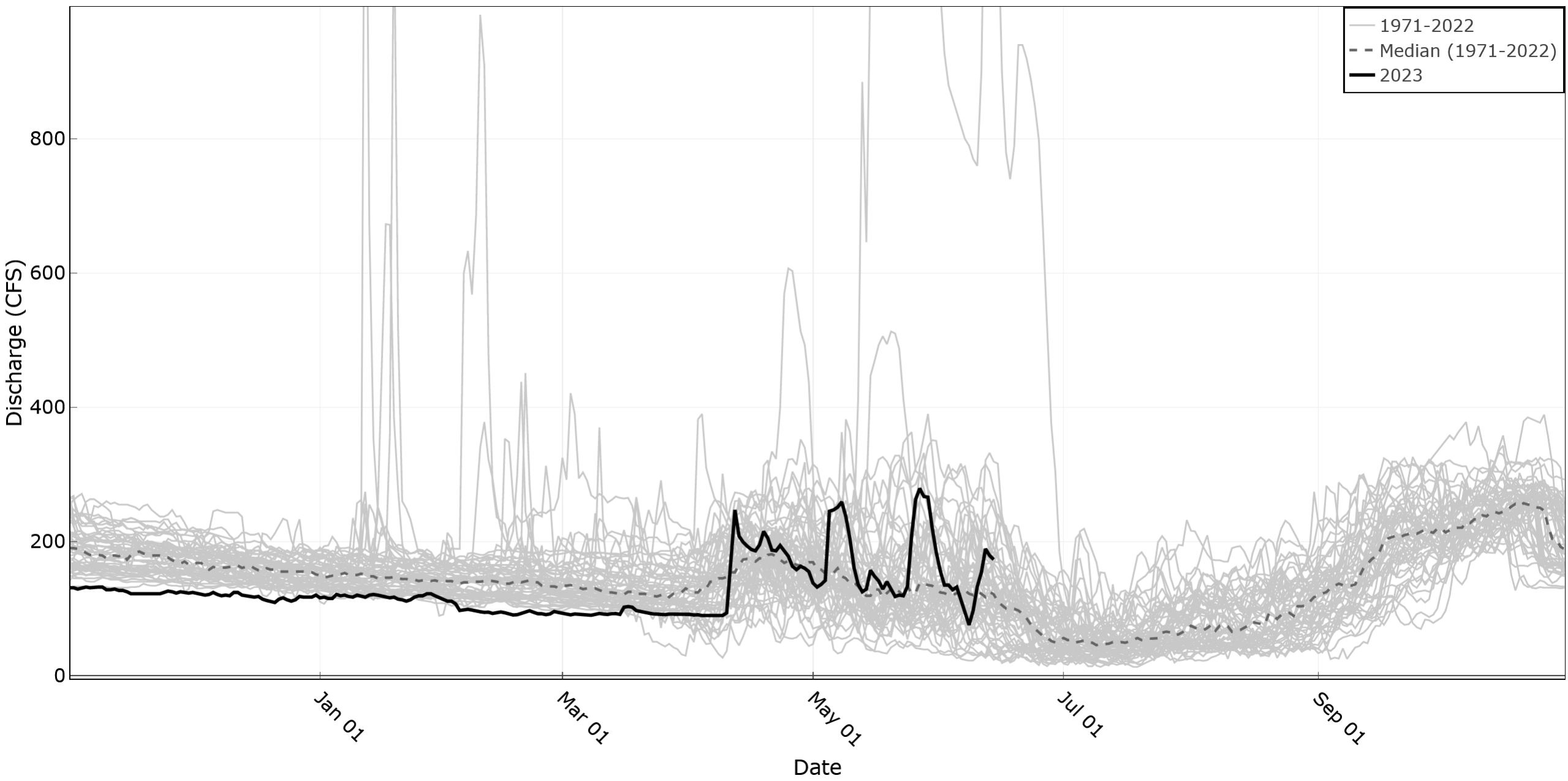
Bruneau River nr Hot Springs



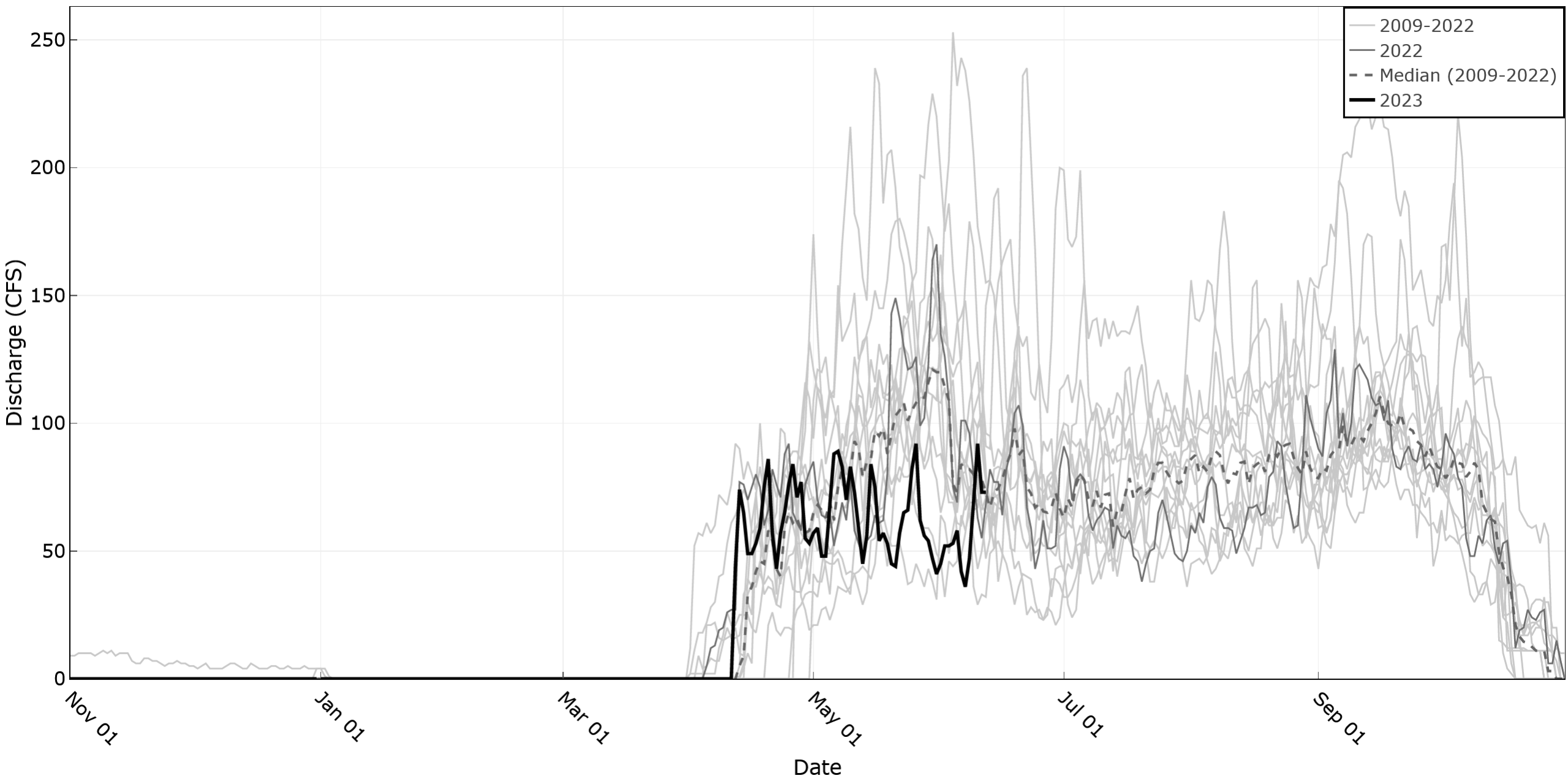
Malad River nr Gooding



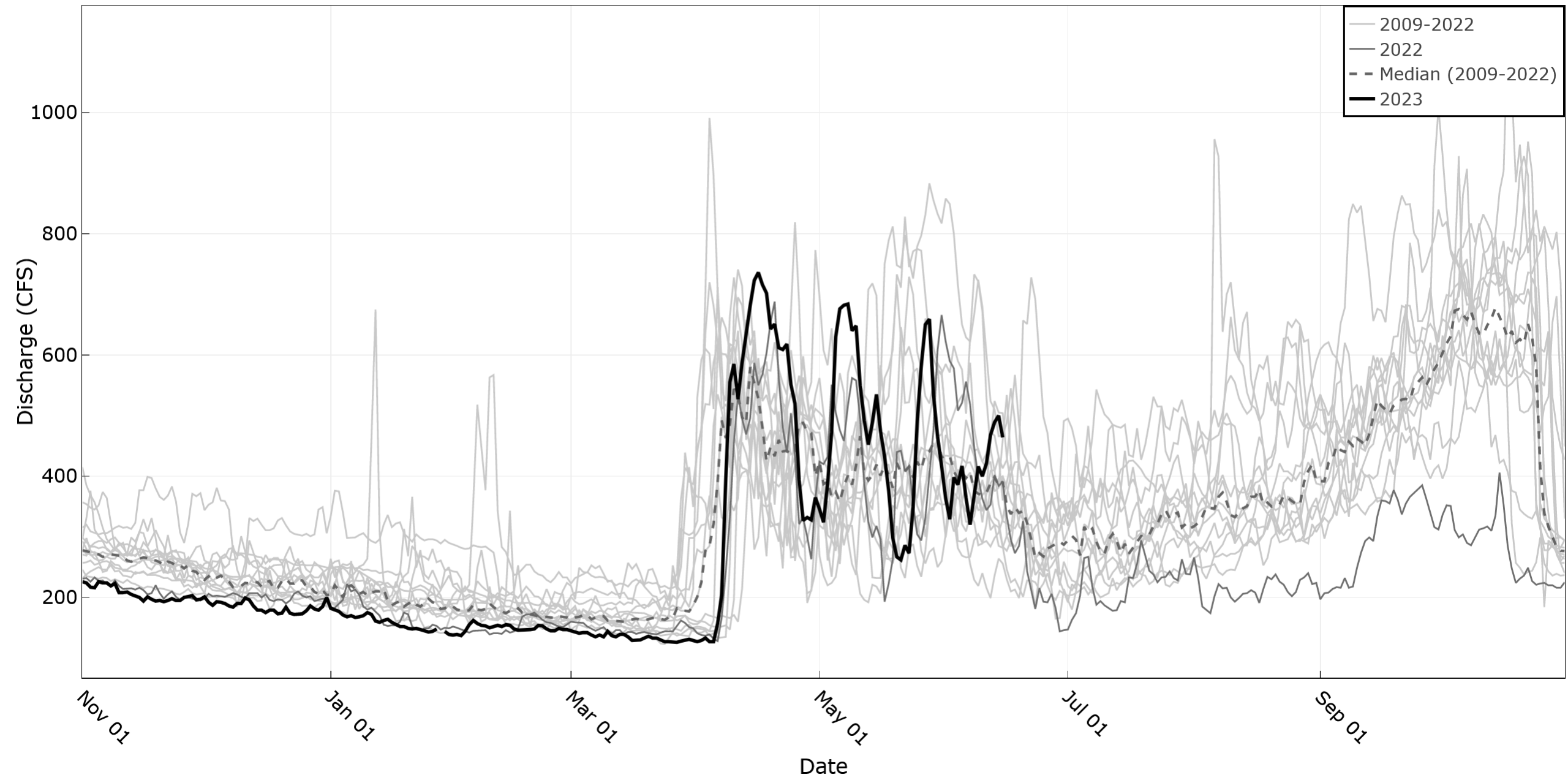
Salmon Falls Creek nr Hagerman



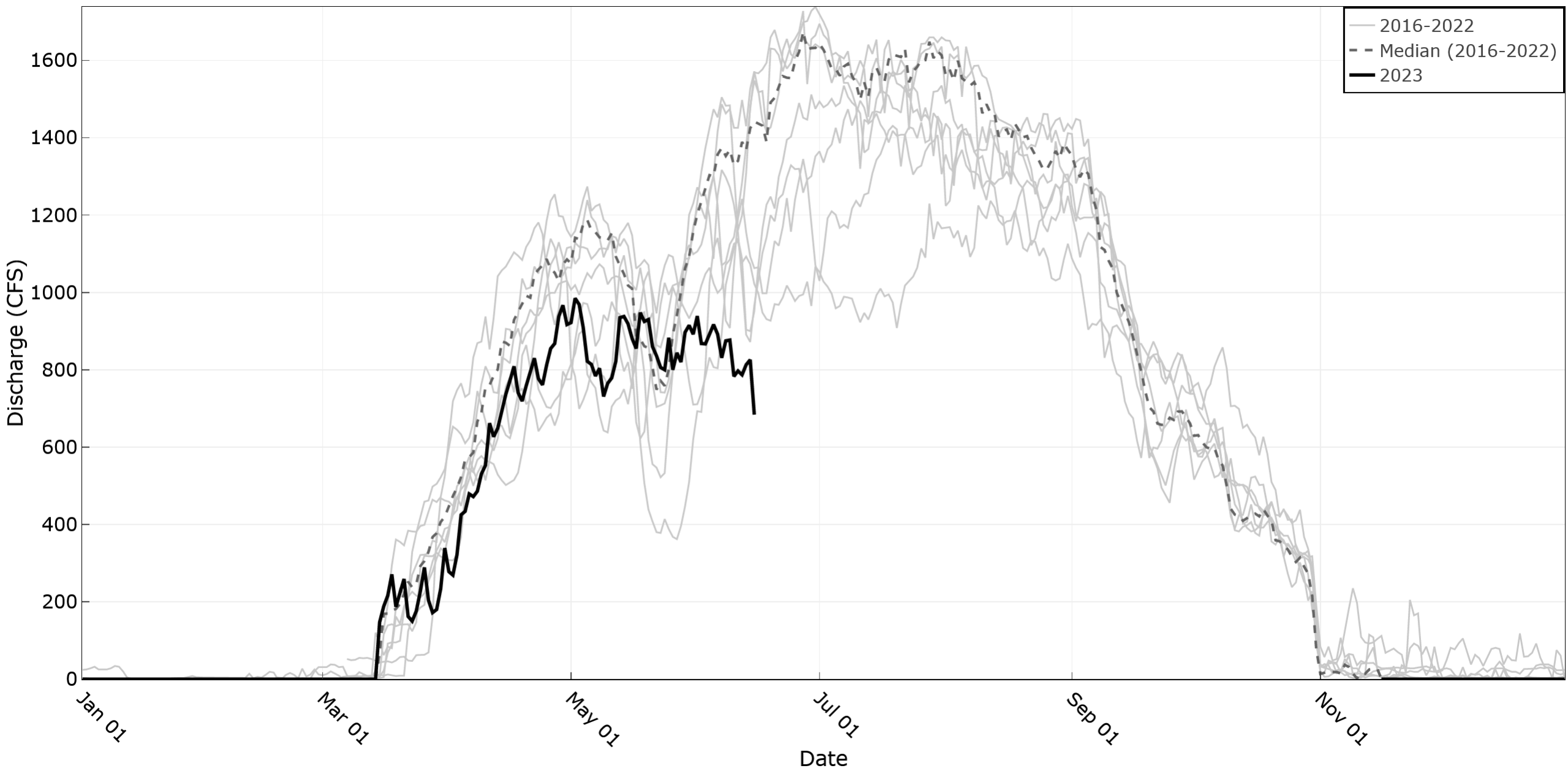
Snake River Northside Return Flow



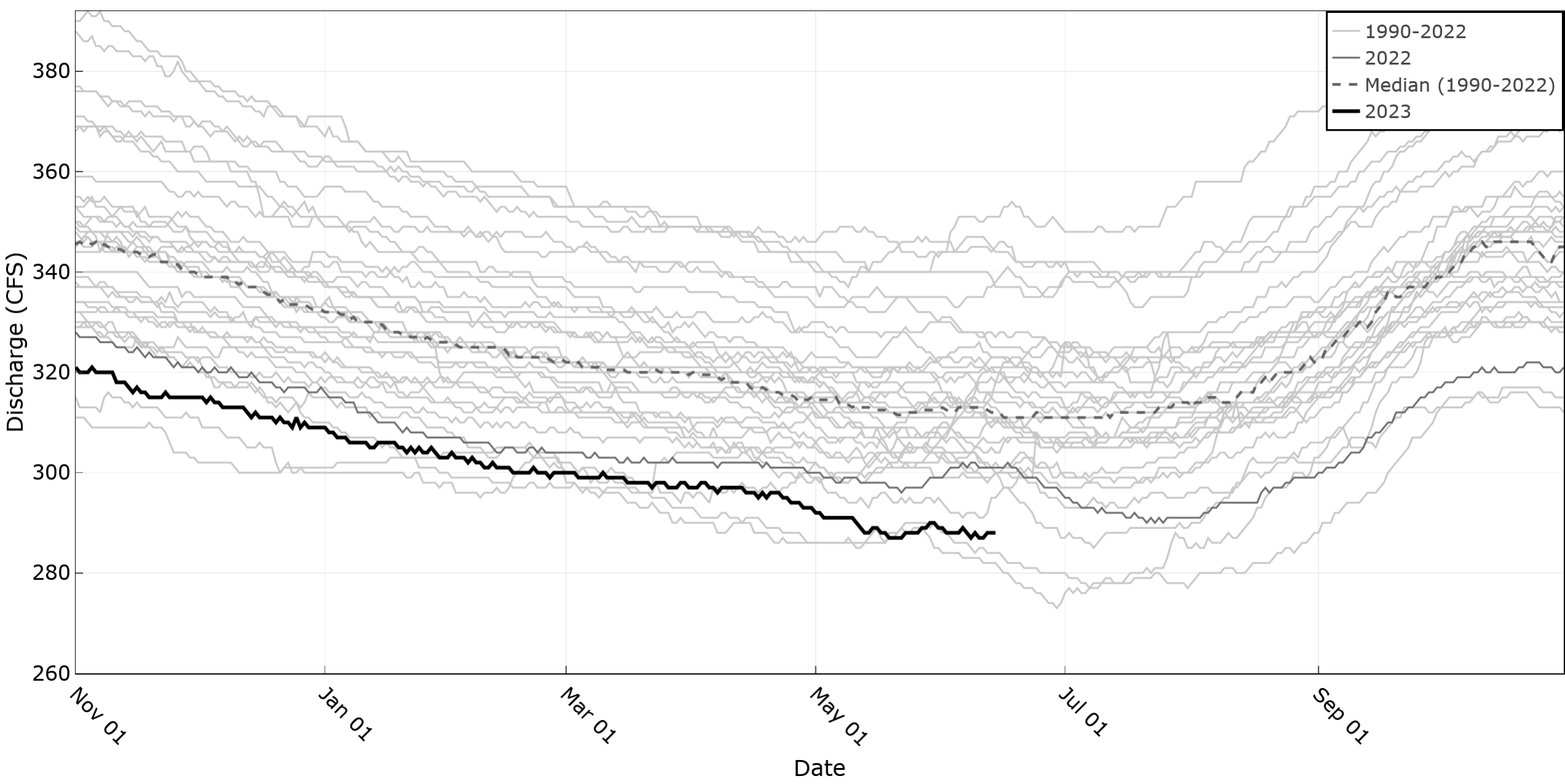
Snake River Southside Return Flows



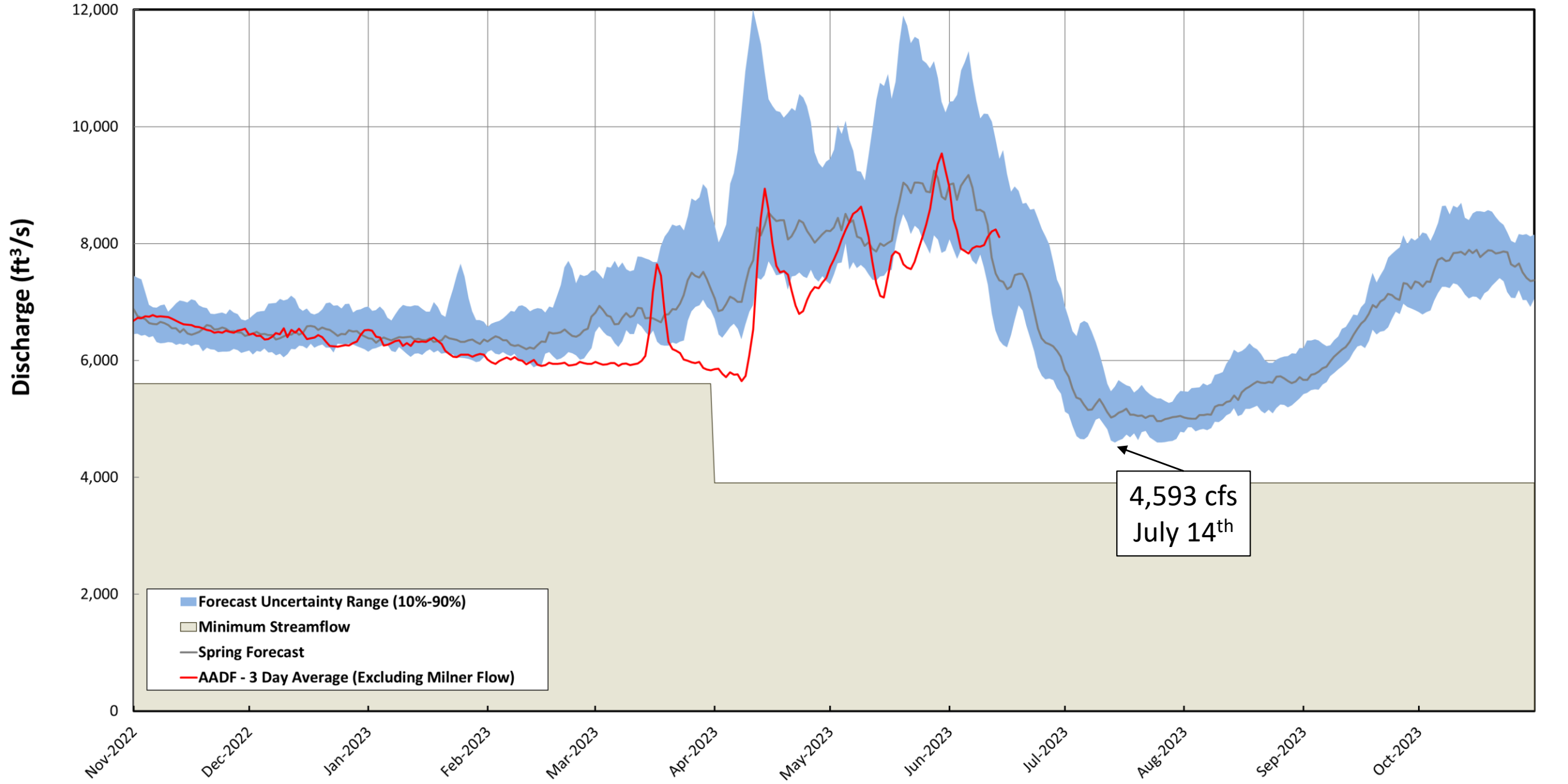
WD02 Diversions



Box Canyon Spring nr Wendell



2023 Spring Forecast



4,593 cfs
July 14th

Future Tasks for SFIG Q5 analysis:

- Comparison of July Average vs July Minimum (3-Day Average AADF)
- Return Flow Trends
- Identifying value like the Sentinel Well Index for Southwest ESPA (1980's – present)