

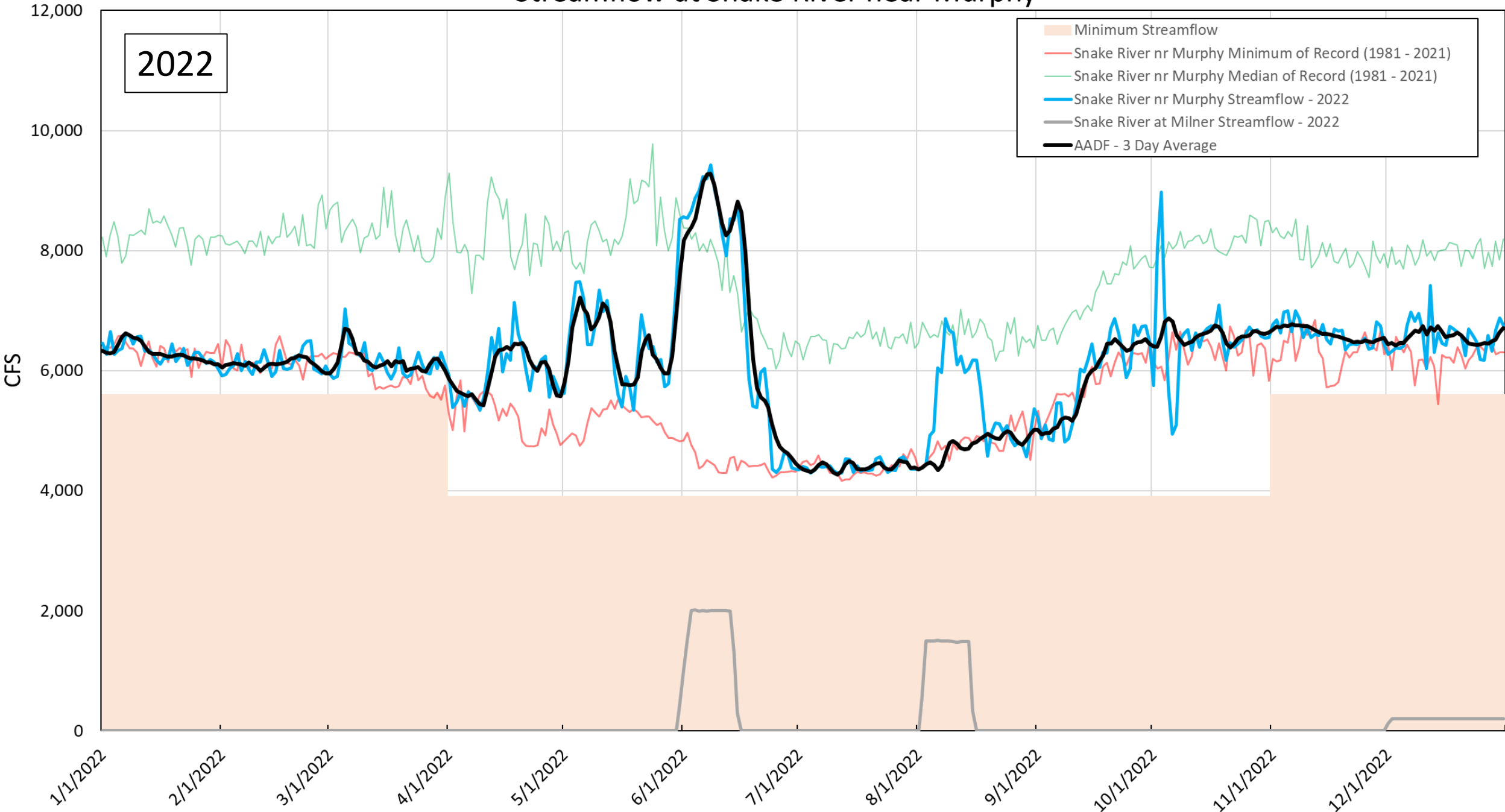
Swan Falls AADF Update

Presented by Ethan Geisler

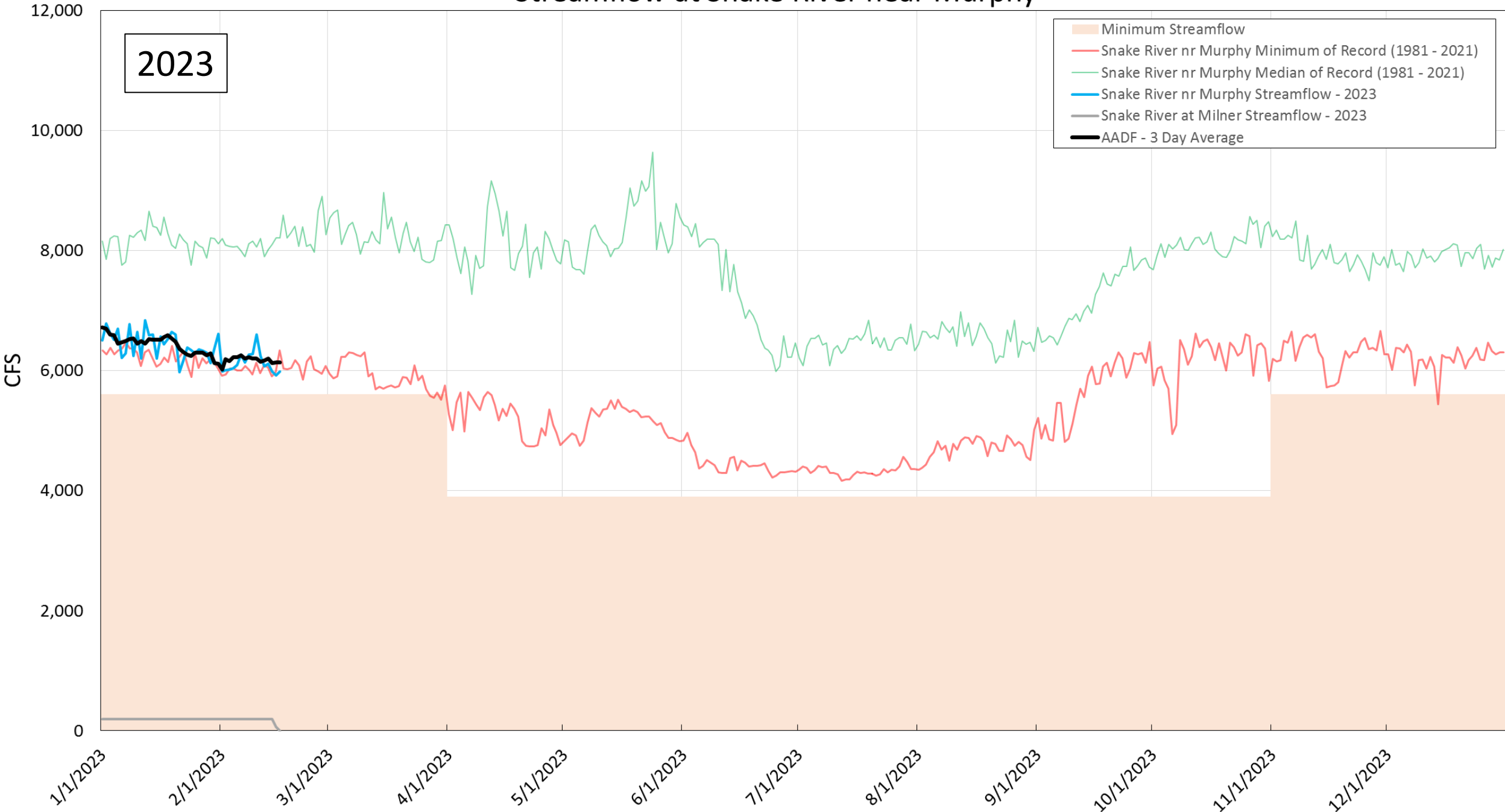
Feb 17th, 2023



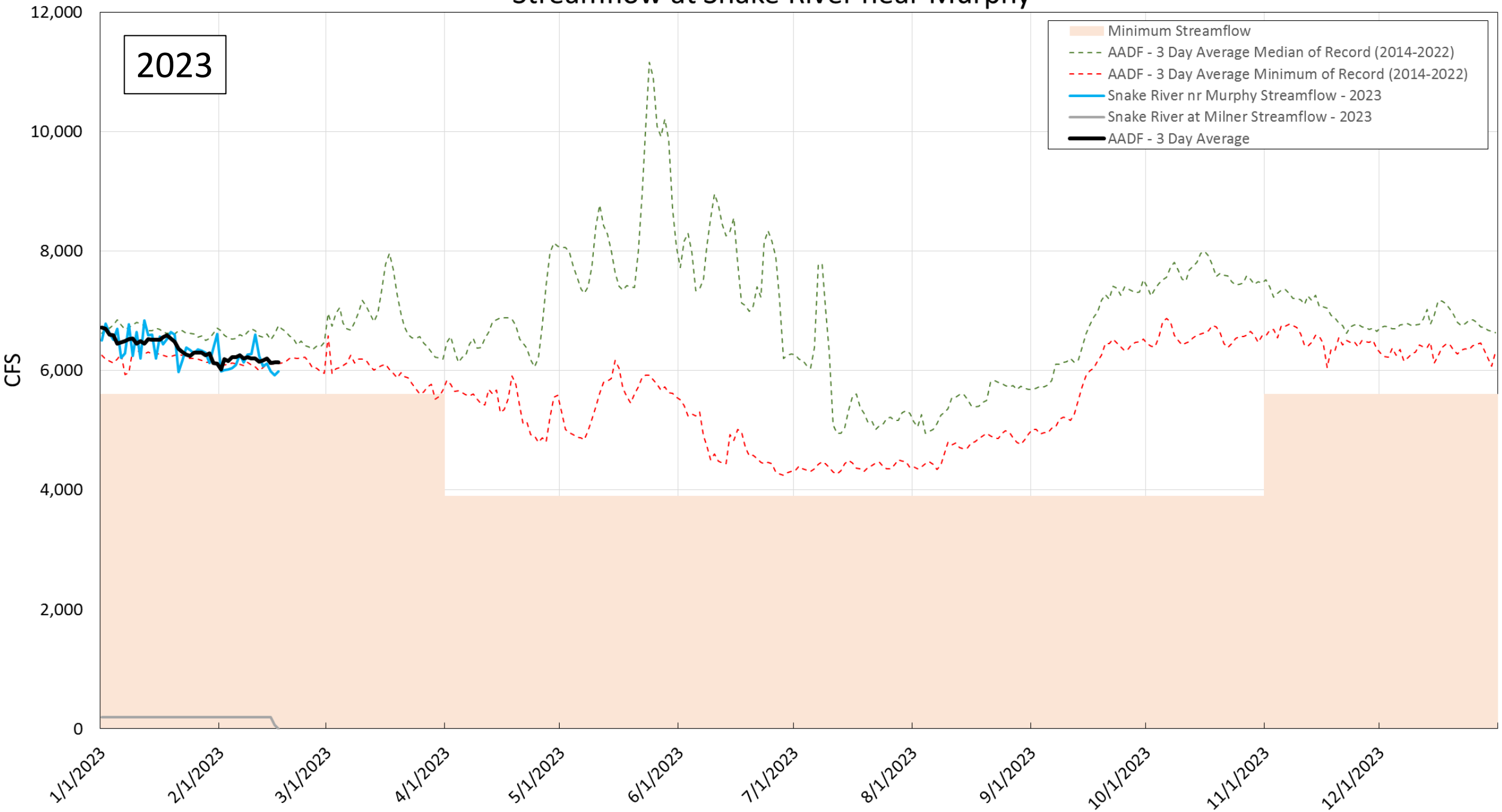
Streamflow at Snake River near Murphy



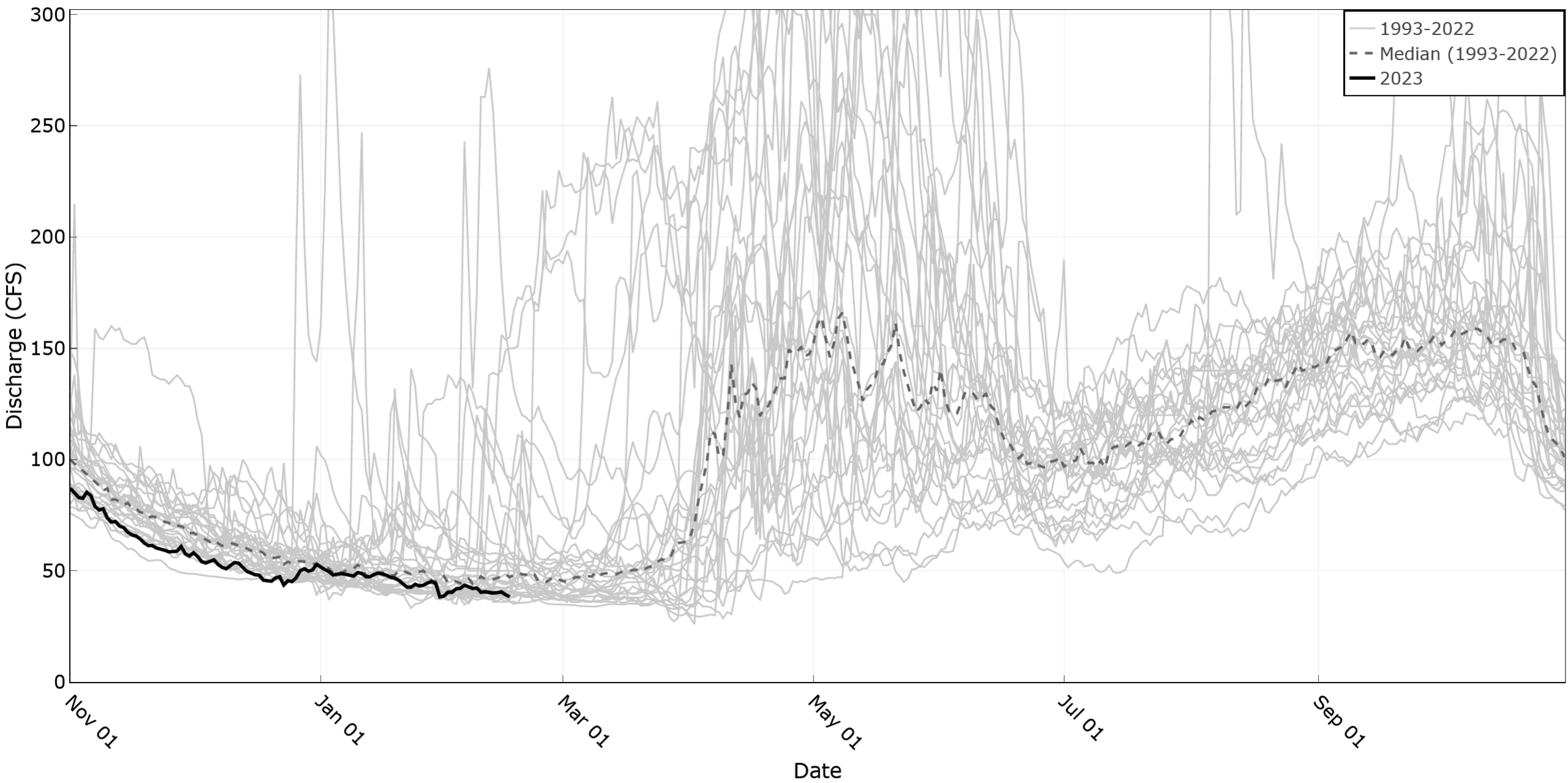
Streamflow at Snake River near Murphy



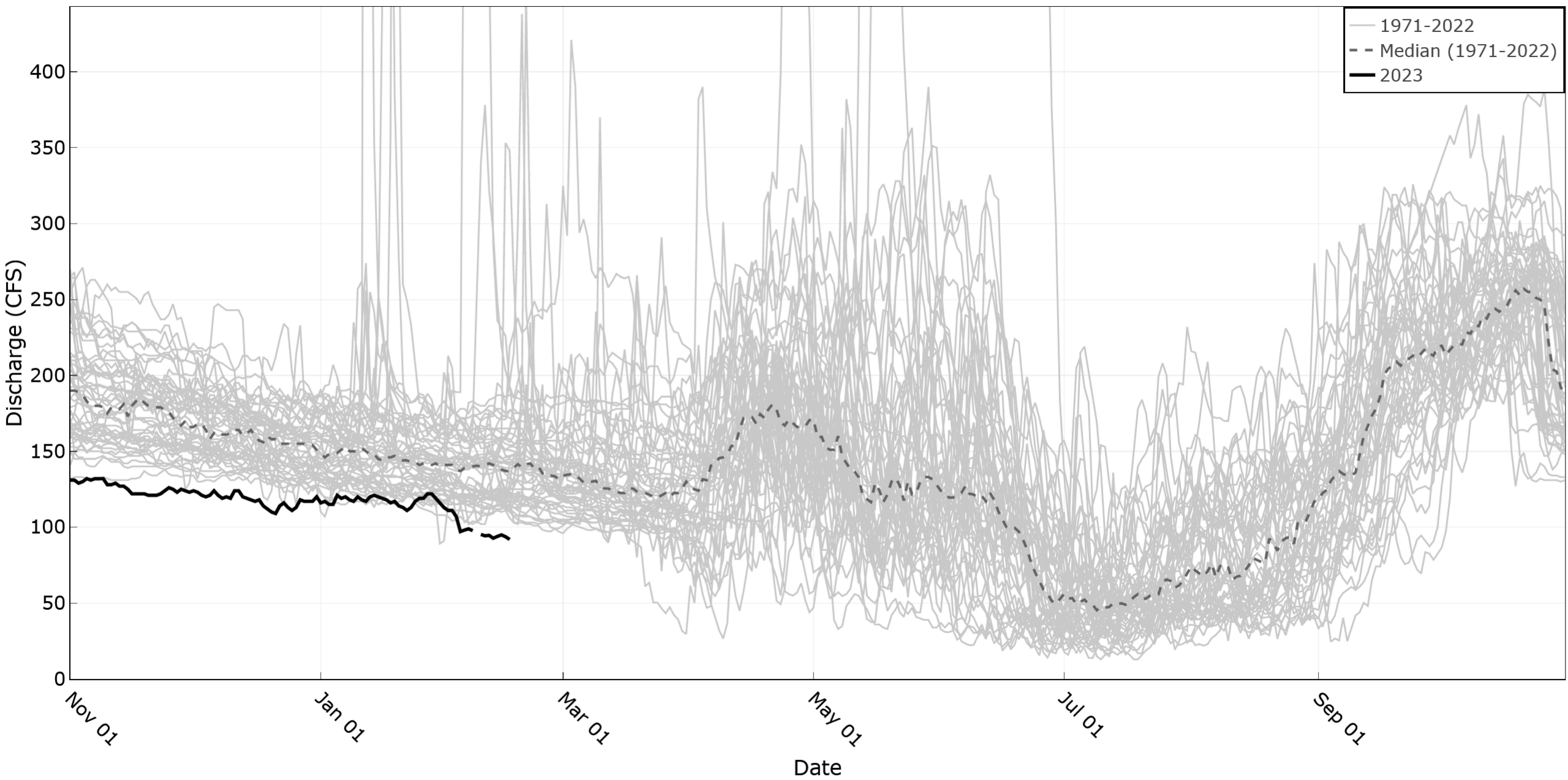
Streamflow at Snake River near Murphy



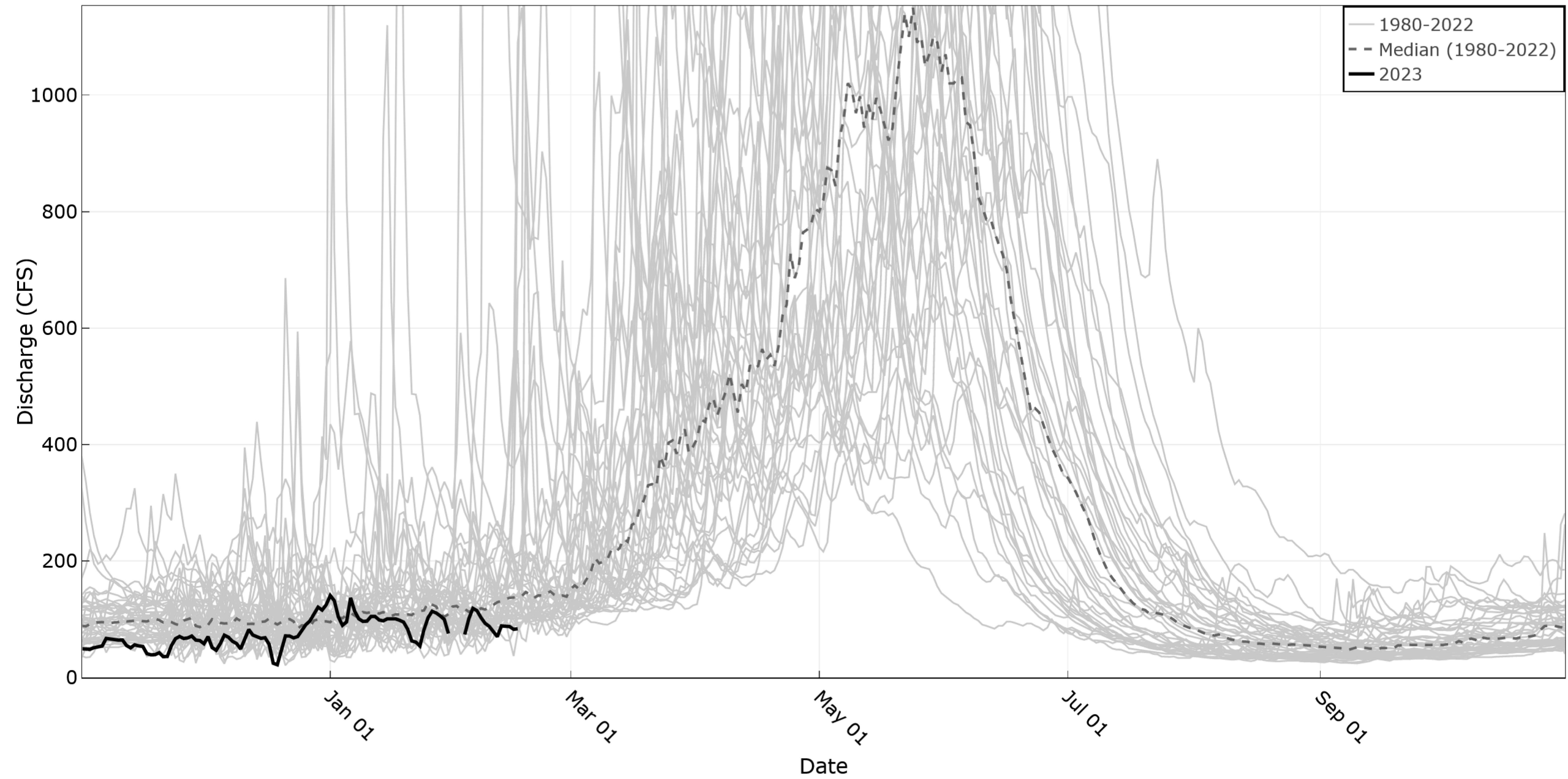
Rock Creek abv Highway 30



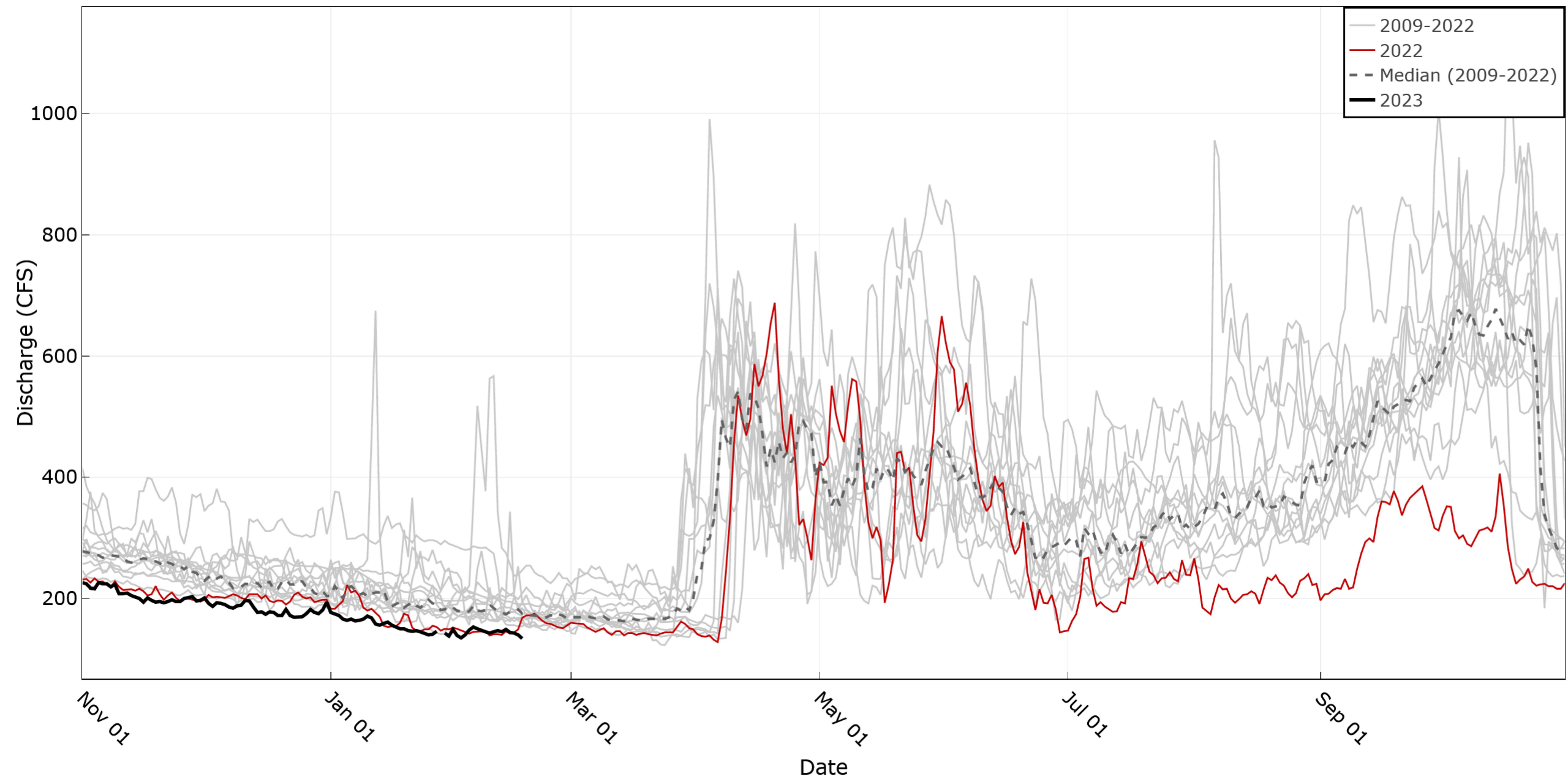
Salmon Falls Creek nr Hagerman



Bruneau River nr Hot Springs



Snake River Southside Return Flows



Swan Falls Forecast Tool Update

Presented by Ethan Geisler

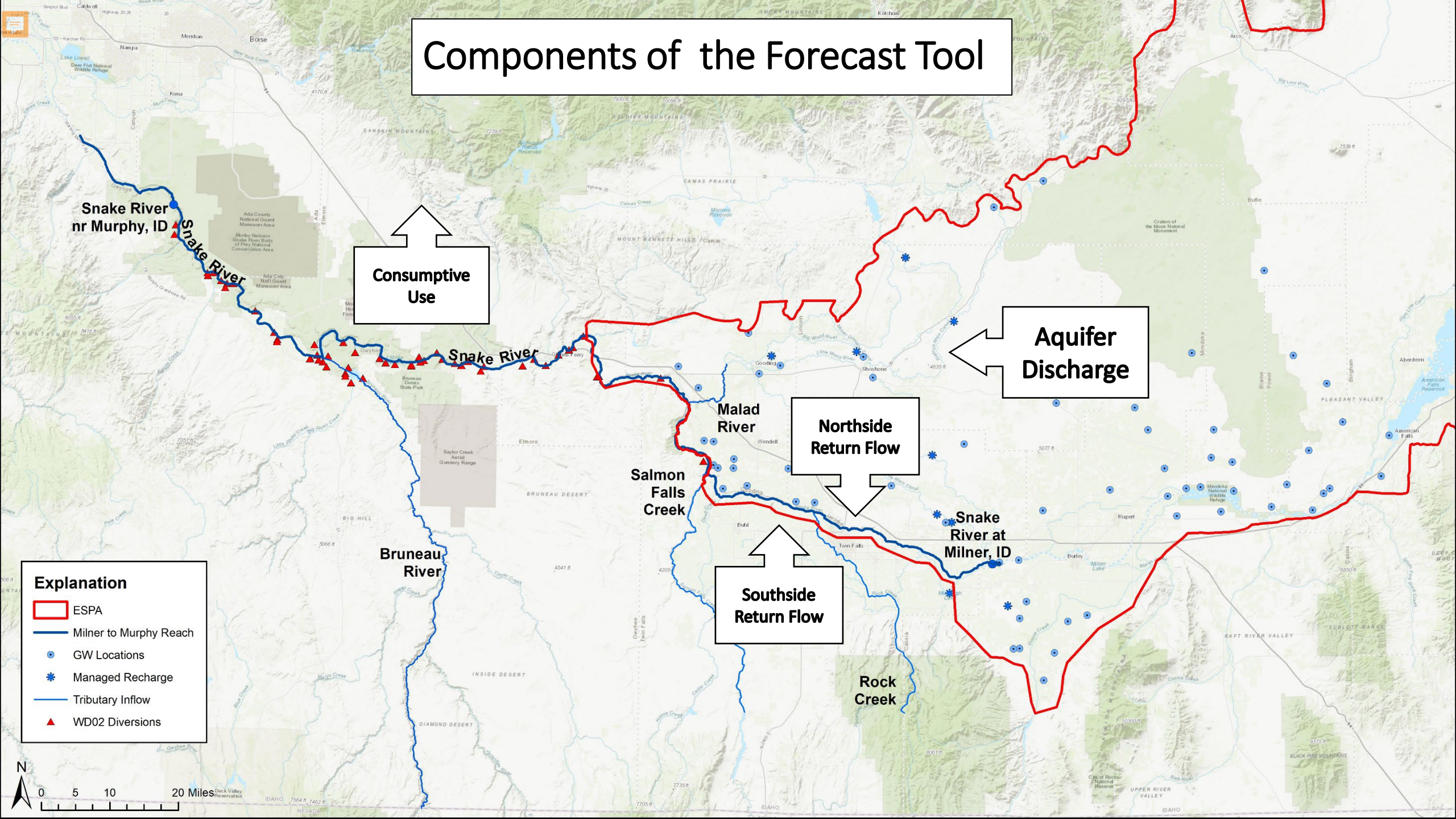
Feb 17th, 2023



Swan Falls Forecast Tool

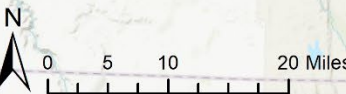
- Spreadsheet-based tool developed by CH2M Hill (Jacobs Engineering) in cooperation with IDWR and stakeholders
- Tool is used to forecast the reach gain for the Milner to Murphy reach during the low flow period in the summer
 - June through August
 - ESPA discharge is the main contributor to the reach during this time of year
- Two forecasts: Winter and Spring forecasts

Components of the Forecast Tool

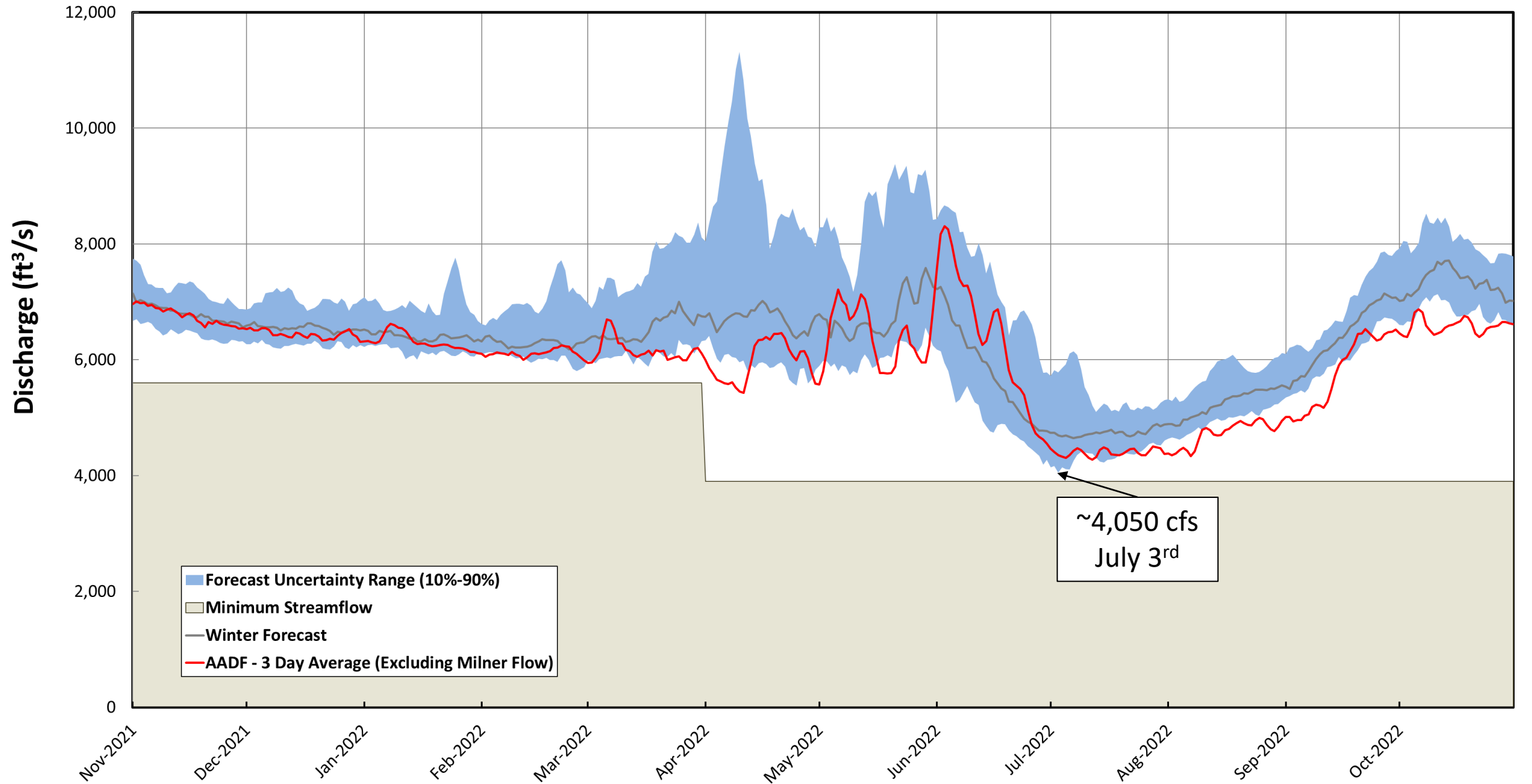


Explanation

- ESPA
- Milner to Murphy Reach
- GW Locations
- Managed Recharge
- Tributary Inflow
- WD02 Diversions



2022 Winter Forecast



SNOW WATER EQUIVALENT IN UPPER SNAKE

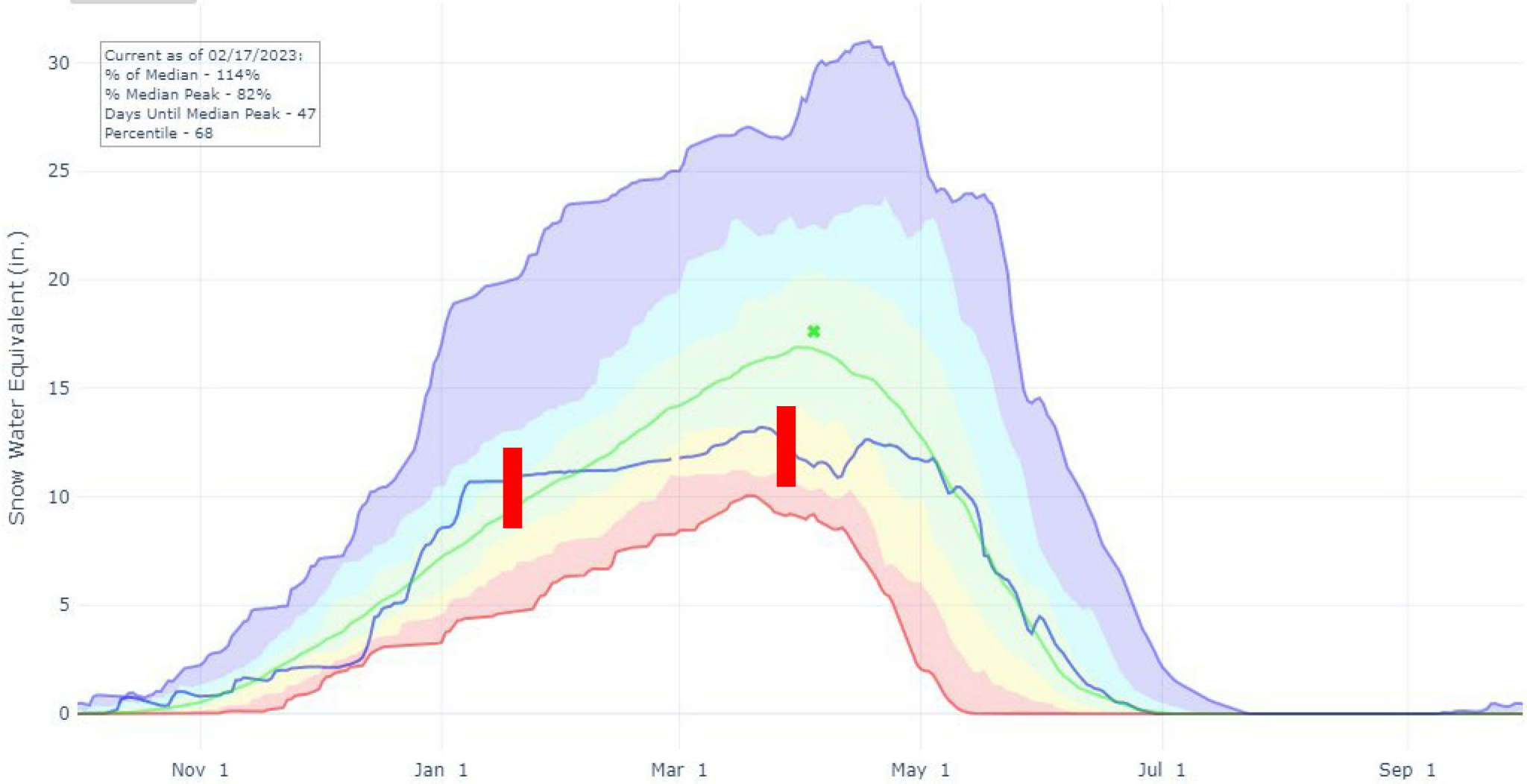
Reset Range

[Link to data: CSV / JSON](#)

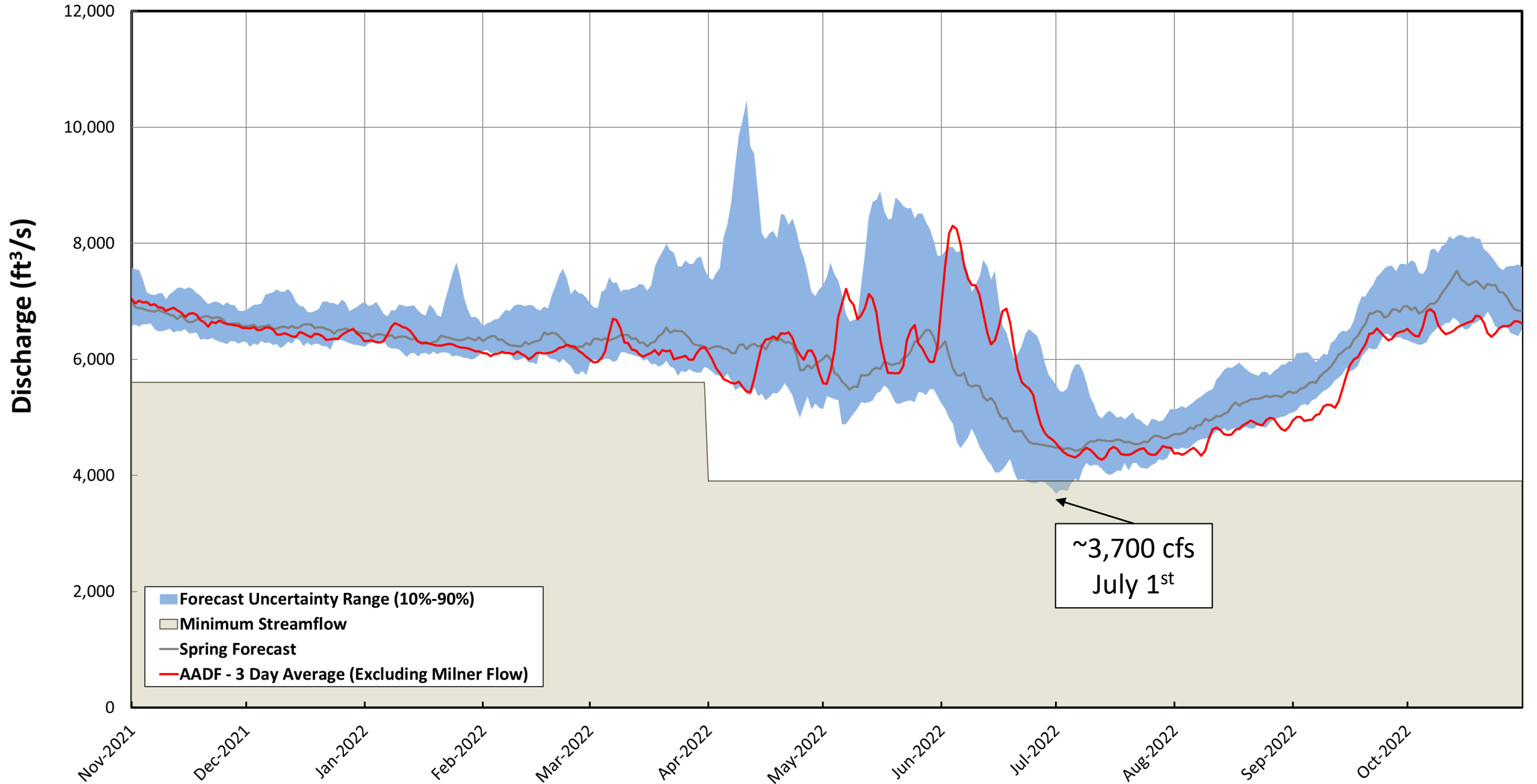
Station List

- ✖ Median Peak SWE
- Max
- Median (POR)
- Median ('91-'20)
- Min
- Stats. Shading
- 2023 (39 sites)
- 2022 (39 sites)
- 2021 (39 sites)
- 2020 (39 sites)
- 2019 (39 sites)
- 2018 (38 sites)
- 2017 (39 sites)
- 2016 (39 sites)
- 2015 (39 sites)
- 2014 (39 sites)
- 2013 (39 sites)
- 2012 (39 sites)
- 2011 (39 sites)
- 2010 (38 sites)
- 2009 (38 sites)
- 2008 (38 sites)
- 2007 (38 sites)
- 2006 (37 sites)
- 2005 (37 sites)
- 2004 (37 sites)

Current as of 02/17/2023:
% of Median - 114%
% Median Peak - 82%
Days Until Median Peak - 47
Percentile - 68



2022 Spring Forecast



2023 Winter Forecast

