

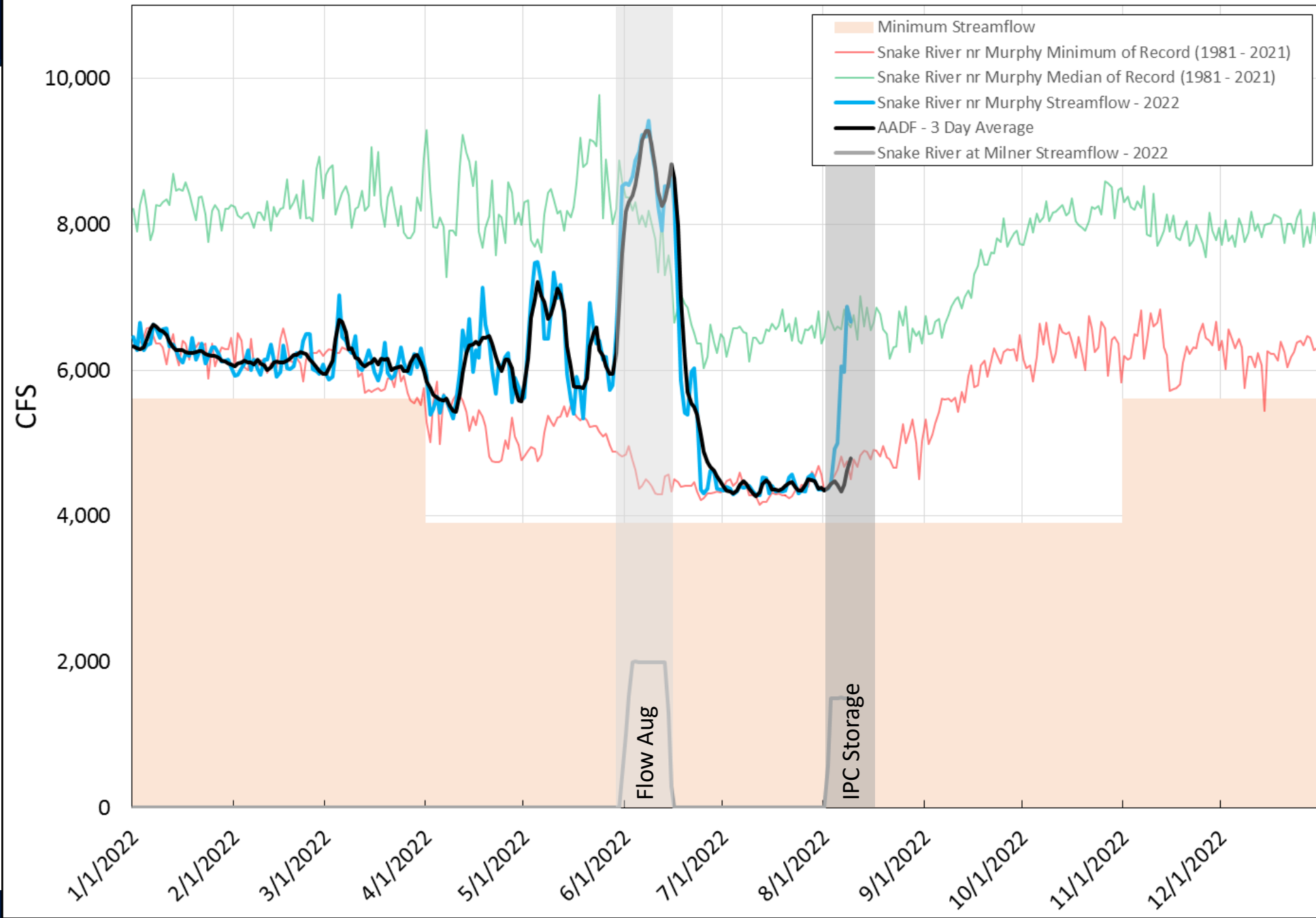
Swan Falls AADF Update

Presented by Ethan Geisler

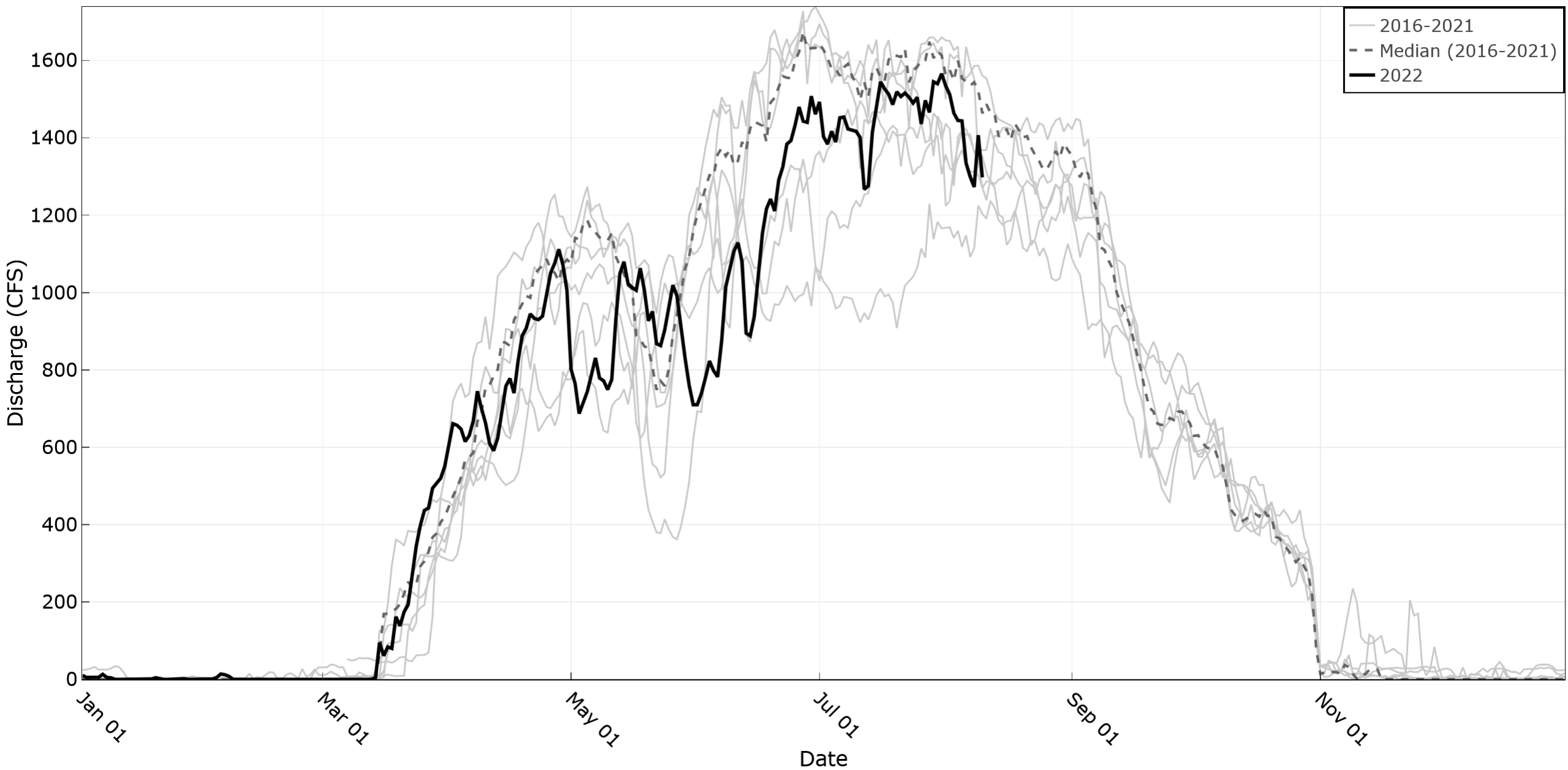
August 10, 2022



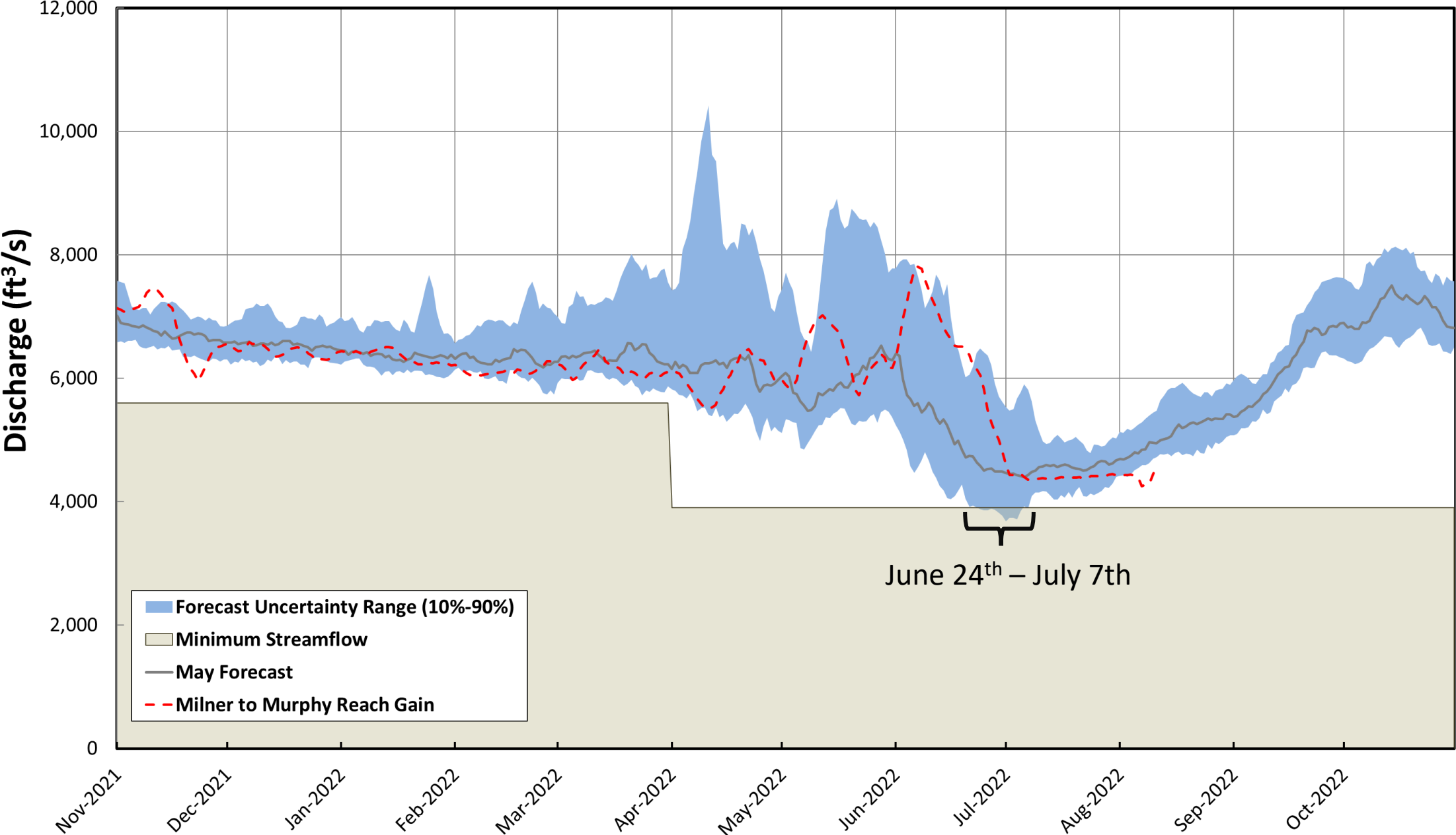
Streamflow at Snake River near Murphy



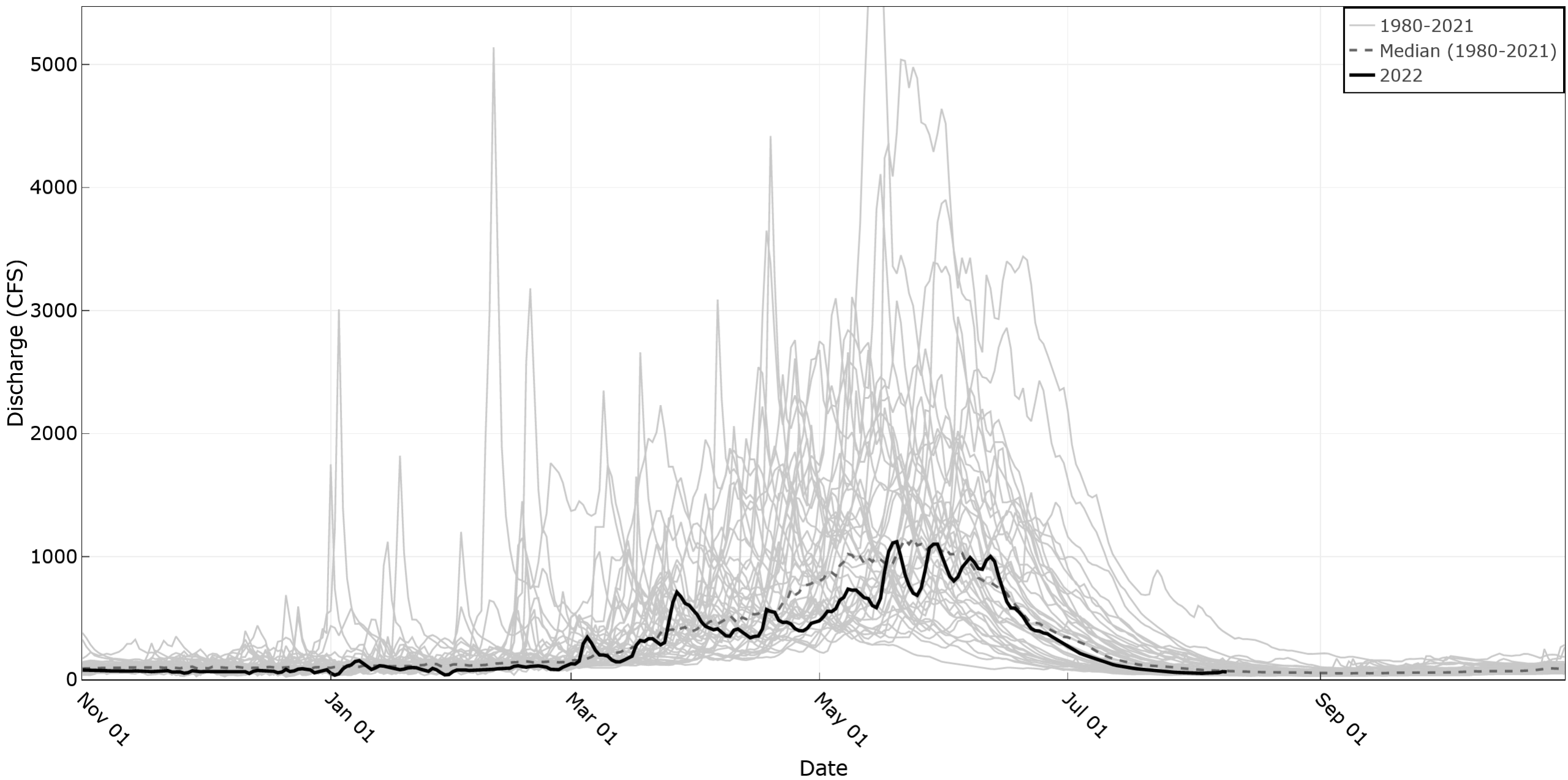
WD02 Diversions



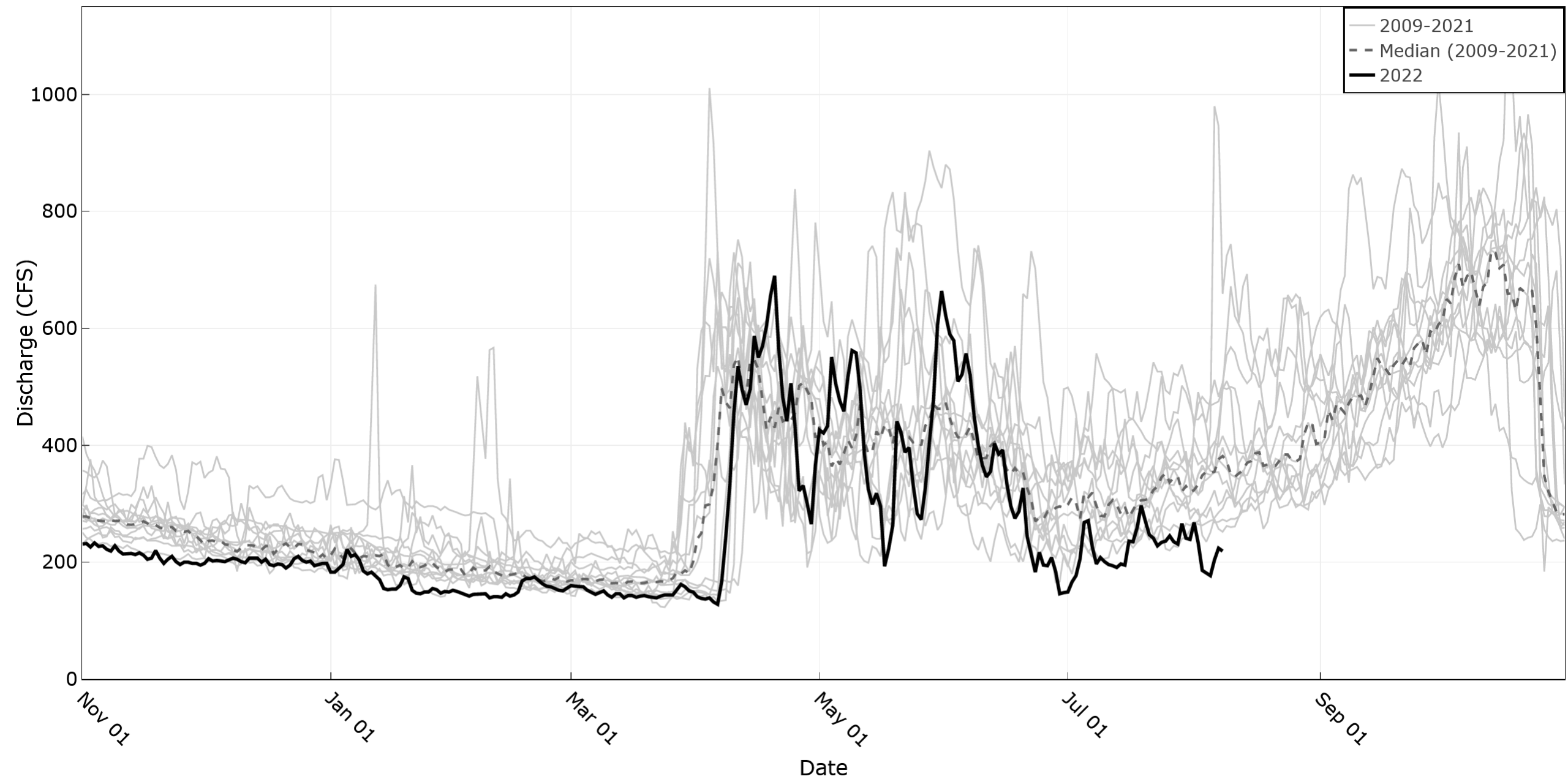
2022 May Forecast: Milner to Murphy Reach Gain



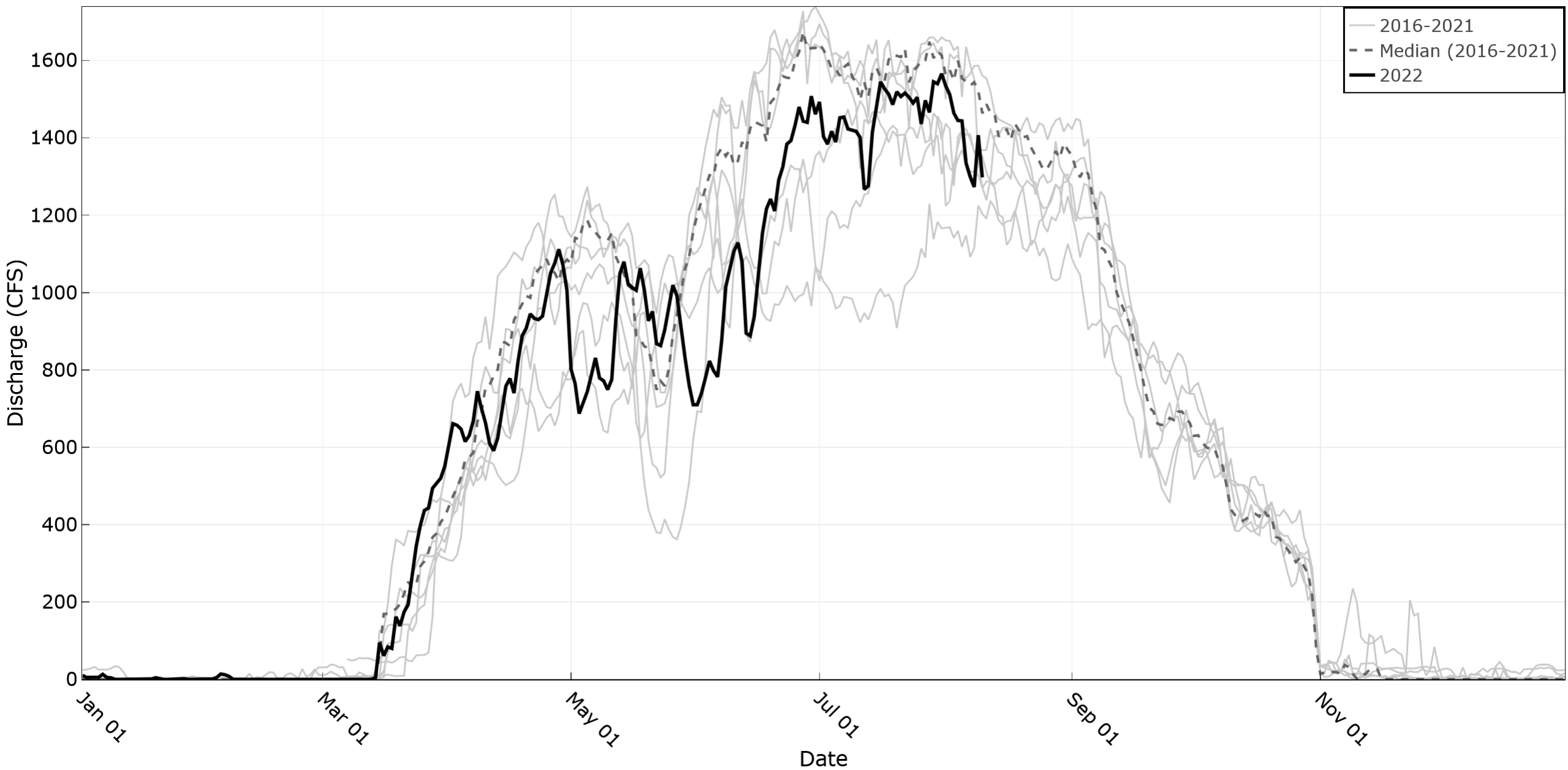
Bruneau River nr Hot Springs



TFCC Return Flow



WD02 Diversions



1. Technical analysis to determine if flows at Murphy would have been below the minimums at any time since 2016, but for IGWA-SWC-Cities settlement activities and IWRB recharge.

- Noah Stewart-Maddox used the ESPAM model to estimate the impacts in the Milner to King Hill reach of the Snake River for:
 - Idaho Water Resources Board managed recharge program
 - Initiated in 2014
 - Surface Water Coalition Settlement Agreement
 - Implemented in 2016
 - Managed recharge
 - Reductions in diversions