



2022 Trust Water Rights Analysis

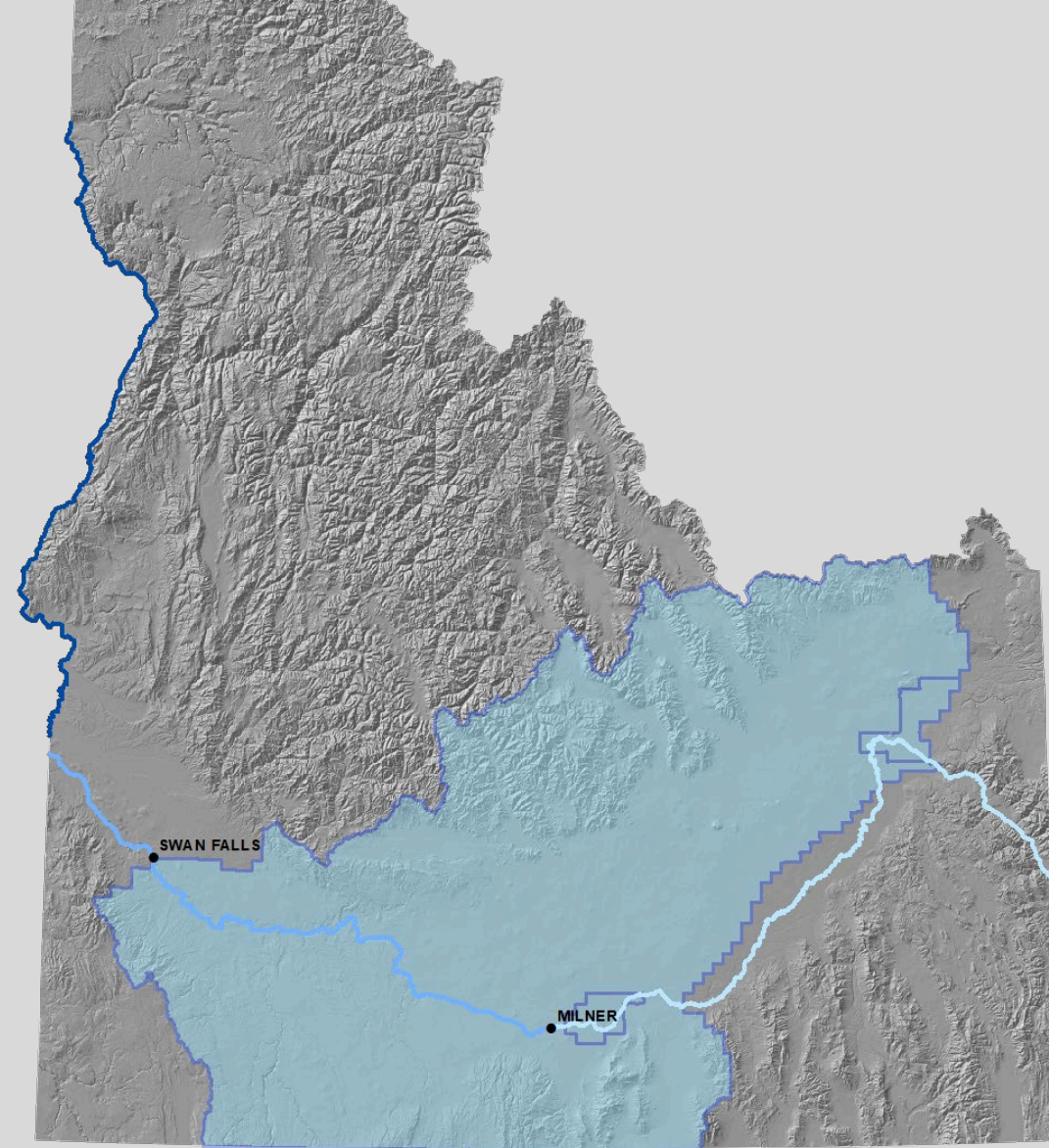
Cody Parker, Water Rights Supervisor

Trust Water Criteria

rights junior to Swan Falls Agreement

Rights diverting water from within the Trust Water area, with priority dates junior to the Swan Falls Agreement, are recognized as Trust Water rights unless:

1. The water right is an A-List right as decreed by the SRBA court
2. The right authorizes the diversion of surface water tributary to the Snake River above Milner Dam¹



1. Per §42-203B "For the purposes of the determination and administration of rights to the use of the waters of the Snake river or its tributaries downstream from Milner dam, no portion of the water of the Snake river or surface or ground water tributary to the Snake river upstream from Milner dam shall be considered."

Rights junior to the Swan Falls Agreement

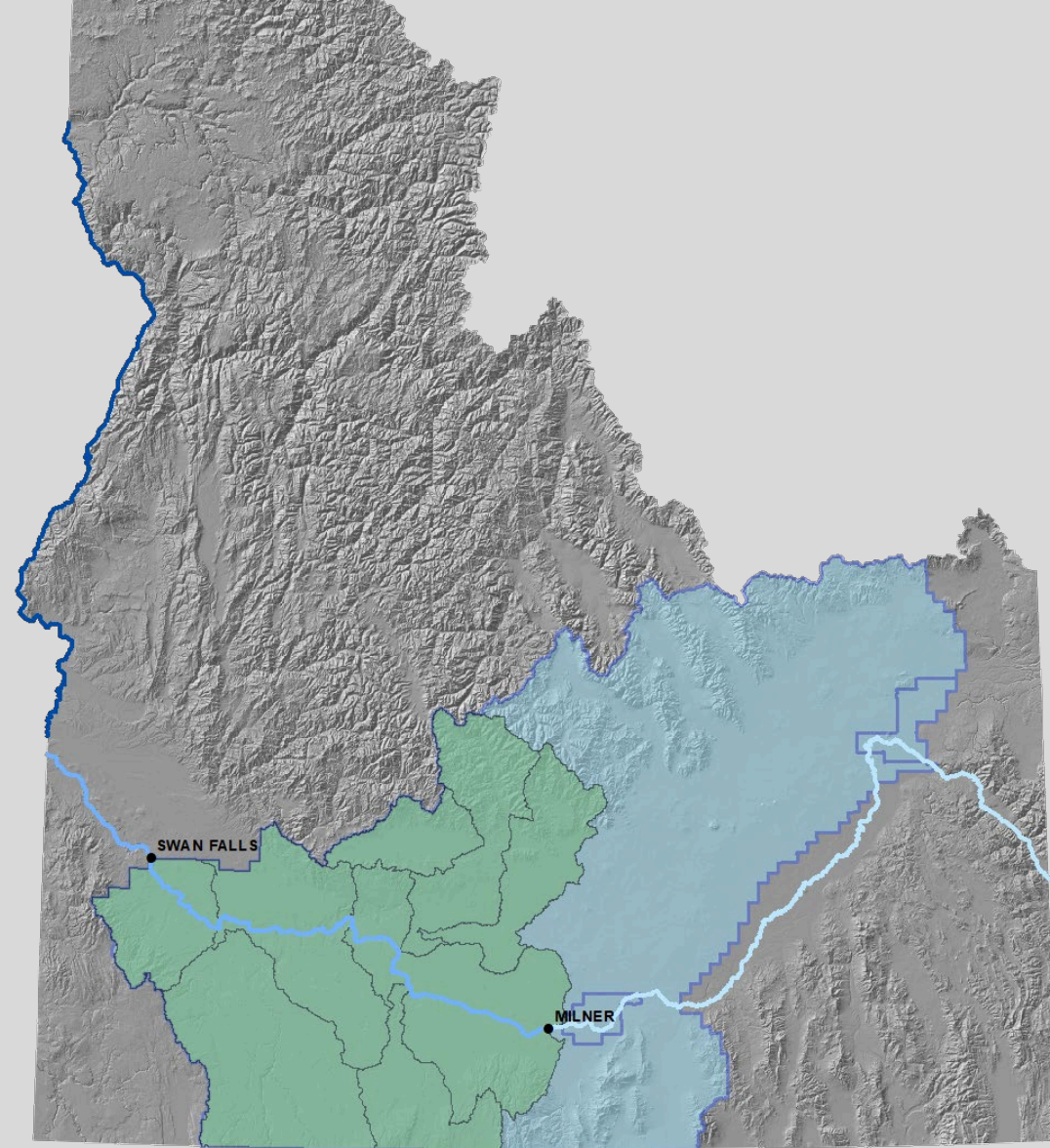
A-List rights



Condition SF1: *This water right enjoys the benefit of unqualified subordination of hydropower water right nos....*



Rights benefiting from unqualified subordination are not subject to the MSFs and are effectively senior to the rights at Swan Falls.

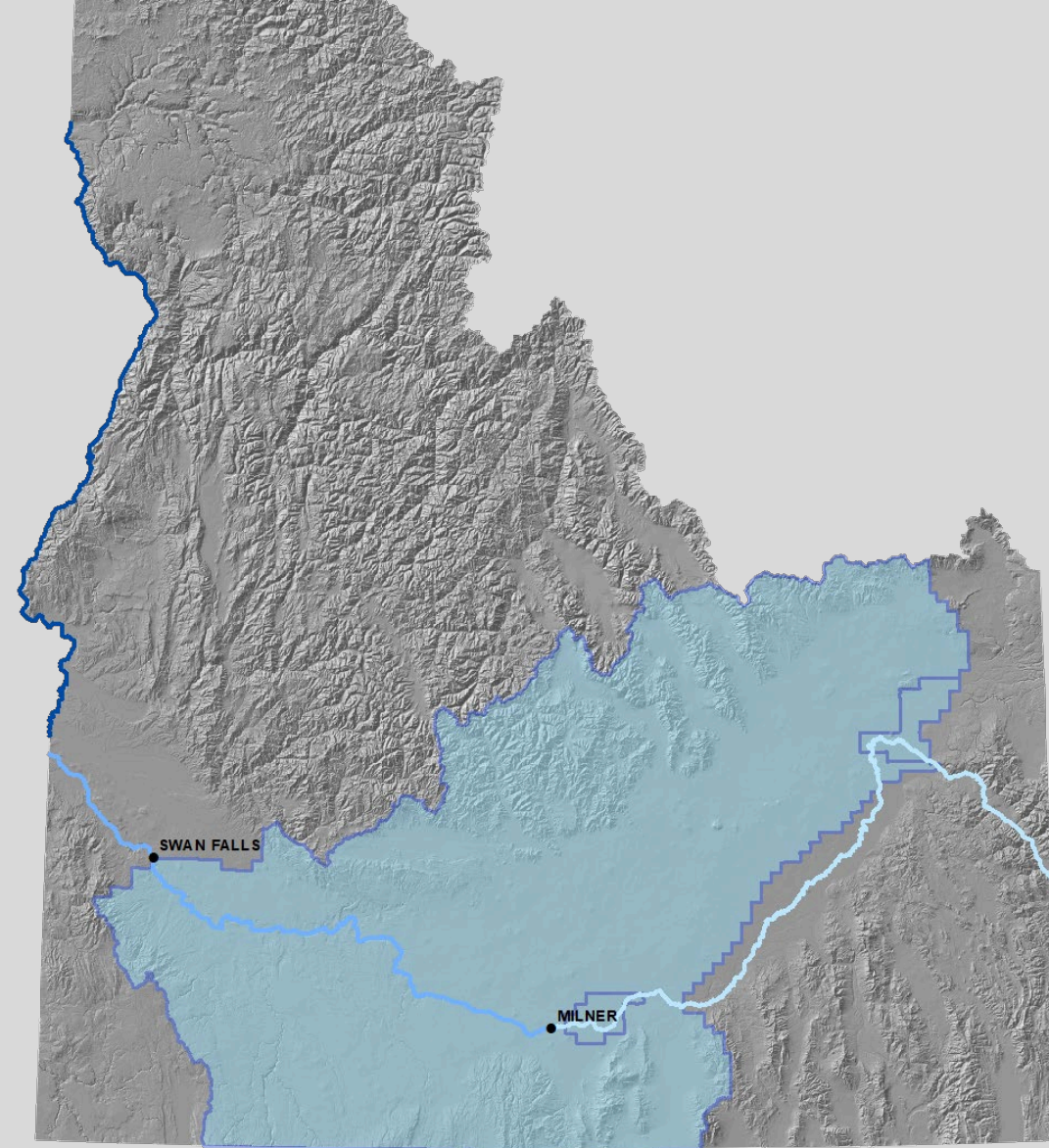


Trust Water Criteria

rights senior to Swan Falls Agreement

Rights diverting water from within the Trust Water area, with priority dates senior to the Swan Falls Agreement are not considered Trust Water rights unless:

1. The water right is a B-List right as decreed by the SRBA court
2. The right is an enlargement right



Rights senior to the Swan Falls Agreement

B-List rights



Condition SF2: *This water right enjoys the benefit of subordination of hydropower water right nos. ... only so long as the average daily flows as measured at the Murphy Gaging station meet or exceed the minimum stream flows established by state action.*

Enlargement rights



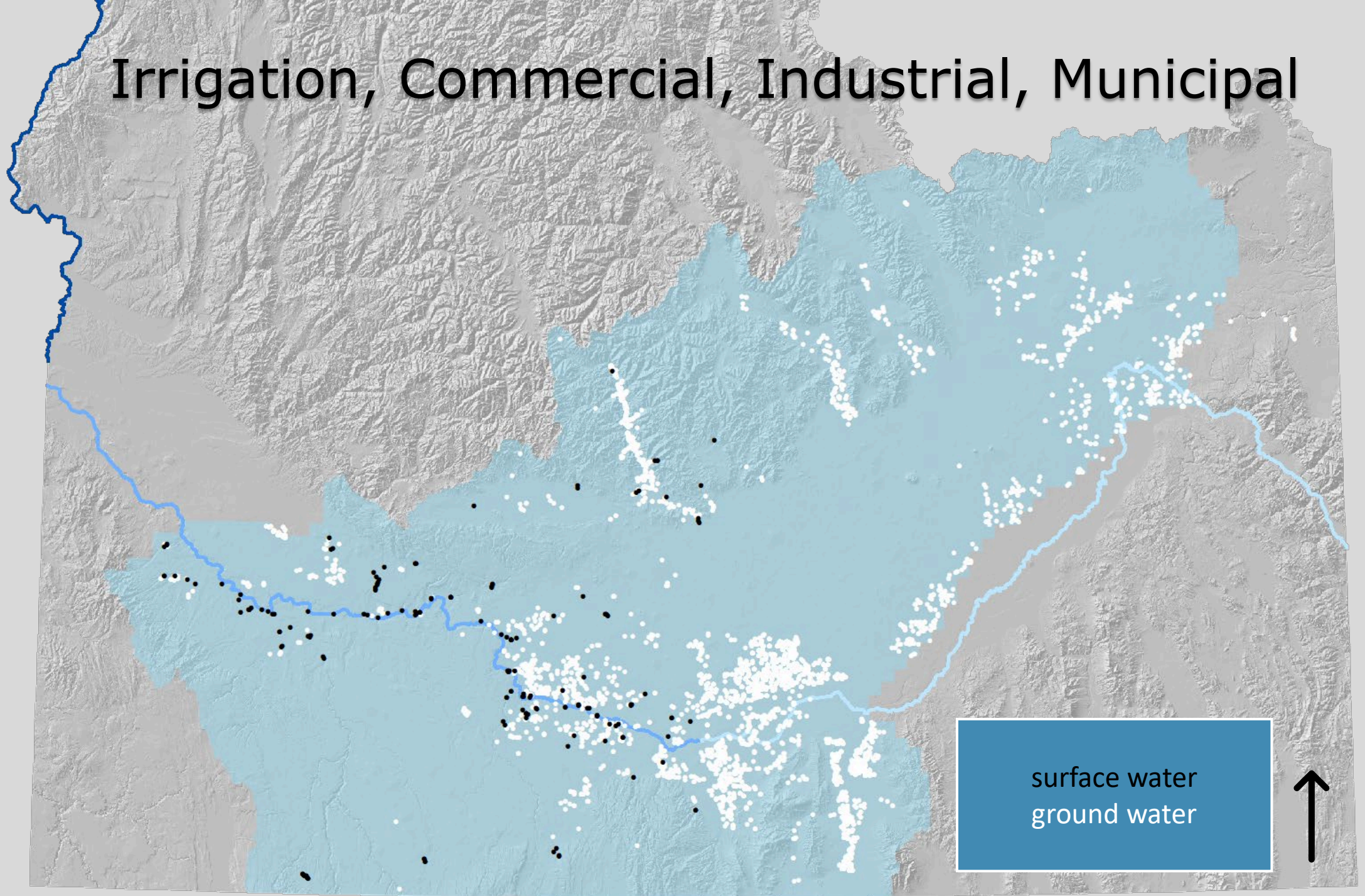
Condition C11: *This water right is subordinate to all water rights with a priority date earlier than April 12, 1994, that are not decreed as enlargements pursuant to Idaho Code §42-1426...*

A map showing the distribution of Active Water Right PODs (Points of Deliberation) across a region. The map features a topographic background with brown and grey terrain. A large blue area represents surface water, and a green area represents ground water. Numerous white dots are scattered across the map, indicating the locations of Active Water Right PODs. A legend in the bottom right corner identifies the blue area as 'surface water' and the green area as 'ground water'. An arrow points upwards in the bottom right corner.

Active Water Right PODs

surface water
ground water

Irrigation, Commercial, Industrial, Municipal

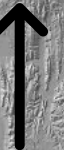




A map showing the distribution of Active Water Permit PODs (Points of Discharge) across a region. The map features a topographic background with brown and grey terrain. A large blue area represents surface water, and a green area represents ground water. A blue line indicates a river or stream. Numerous black and white dots are scattered across the map, representing the locations of the PODs. A white circle in the upper left contains the text 'Active Water Permit PODs'. A blue box in the lower right contains the text 'surface water' and 'ground water'. An upward-pointing arrow is located in the bottom right corner.

Active Water Permit PODs

surface water
ground water



Analysis Results

RightID	WRNo	SurfaceWat	GroundWat	DeMinimis	AList	BList	nlargementR	ExpansionRig	niorToAgreee	sClaimNoDec	streamStockv	NonConsump	Mitigated
635560	2-10325	TRUE	FALSE	FALSE	FALSE	FALSE	FALSE	FALSE	FALSE	FALSE	FALSE	TRUE	FALSE
677152	2-10516	TRUE	FALSE	FALSE	FALSE	FALSE	FALSE	FALSE	FALSE	FALSE	FALSE	FALSE	FALSE
687235	2-10546	TRUE	FALSE	FALSE	FALSE	FALSE	FALSE	FALSE	FALSE	FALSE	FALSE	FALSE	FALSE
710720	2-10633	TRUE	FALSE	FALSE	FALSE	FALSE	FALSE	FALSE	FALSE	FALSE	FALSE	FALSE	FALSE
635651	2-7471	TRUE	FALSE	FALSE	FALSE	FALSE	FALSE	FALSE	FALSE	FALSE	FALSE	FALSE	FALSE
670217	22-13888	FALSE	TRUE	FALSE	FALSE	FALSE	FALSE	FALSE	FALSE	FALSE	FALSE	FALSE	FALSE
692800	22-14337	FALSE	TRUE	FALSE	FALSE	FALSE	FALSE	FALSE	FALSE	FALSE	FALSE	TRUE	FALSE
700423	22-14389	FALSE	TRUE	FALSE	FALSE	FALSE	FALSE	FALSE	FALSE	FALSE	FALSE	FALSE	FALSE
588464	25-14165	FALSE	TRUE	FALSE	FALSE	FALSE	FALSE	FALSE	FALSE	FALSE	FALSE	FALSE	FALSE
656600	25-14377	FALSE	TRUE	FALSE	FALSE	FALSE	FALSE	FALSE	FALSE	FALSE	FALSE	FALSE	FALSE
705129	25-14494	FALSE	TRUE	FALSE	FALSE	FALSE	FALSE	FALSE	FALSE	FALSE	FALSE	FALSE	FALSE
671619	31-12339	FALSE	TRUE	TRUE	FALSE	FALSE	FALSE	FALSE	FALSE	FALSE	FALSE	FALSE	FALSE
689368	31-12442	FALSE	TRUE	FALSE	FALSE	FALSE	FALSE	FALSE	FALSE	FALSE	FALSE	FALSE	FALSE
570061	34-13791	FALSE	TRUE	FALSE	FALSE	FALSE	FALSE	FALSE	FALSE	FALSE	FALSE	FALSE	FALSE
672006	34-14459	FALSE	TRUE	FALSE	FALSE	FALSE	FALSE	FALSE	FALSE	FALSE	FALSE	FALSE	FALSE
691823	34-7511	FALSE	TRUE	FALSE	FALSE	FALSE	FALSE	FALSE	FALSE	FALSE	FALSE	FALSE	TRUE
32547	35-8359	FALSE	TRUE	FALSE	FALSE	FALSE	FALSE	FALSE	FALSE	FALSE	FALSE	FALSE	FALSE
33108	35-8949	FALSE	TRUE	FALSE	FALSE	FALSE	FALSE	FALSE	FALSE	FALSE	FALSE	FALSE	FALSE

Total Record Count: 4192

- Permits: 159
- Water Rights: 4033
- Recommendations: 0

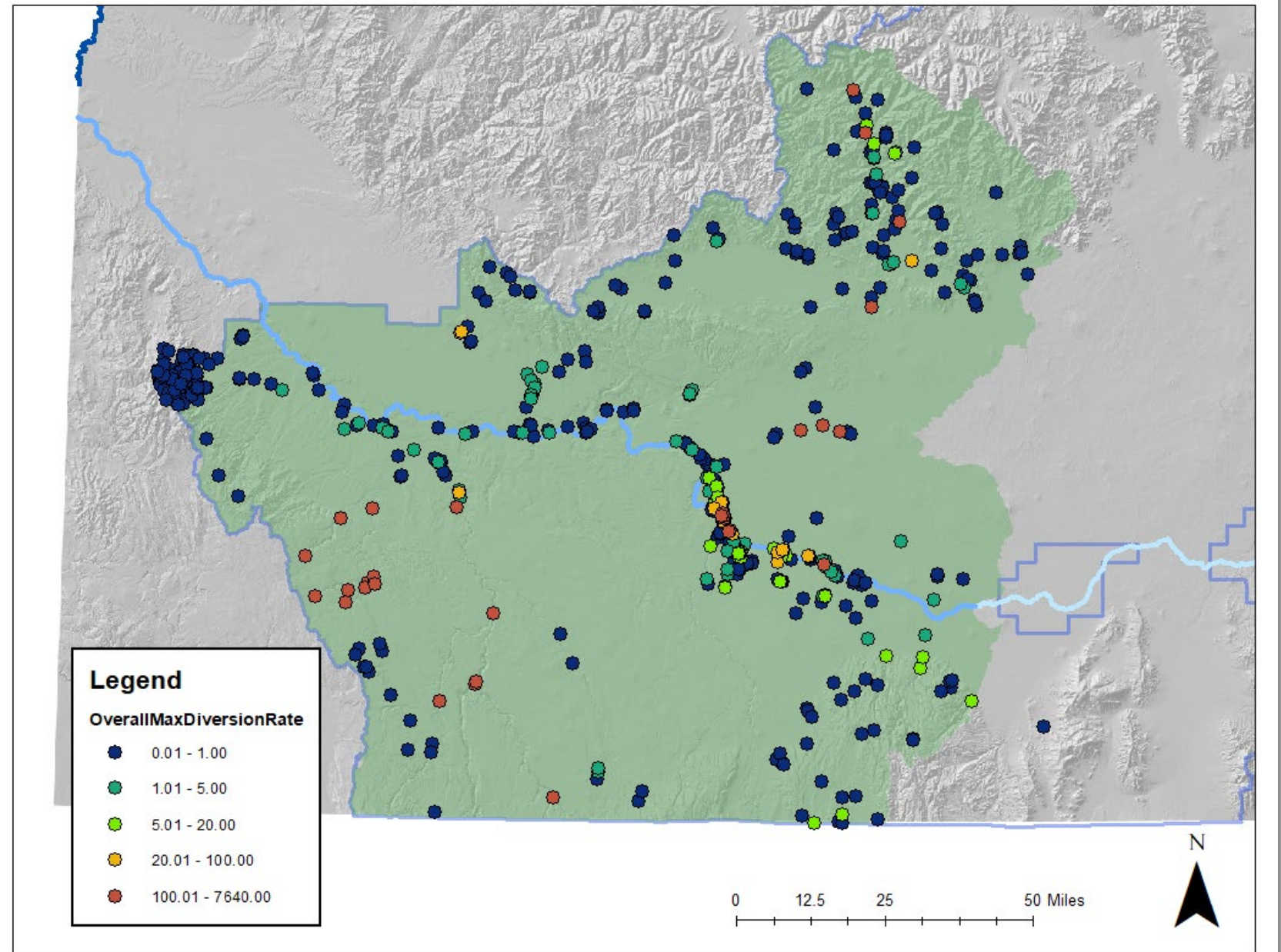
Source

- Surface Water: 608
- Ground Water: 3593

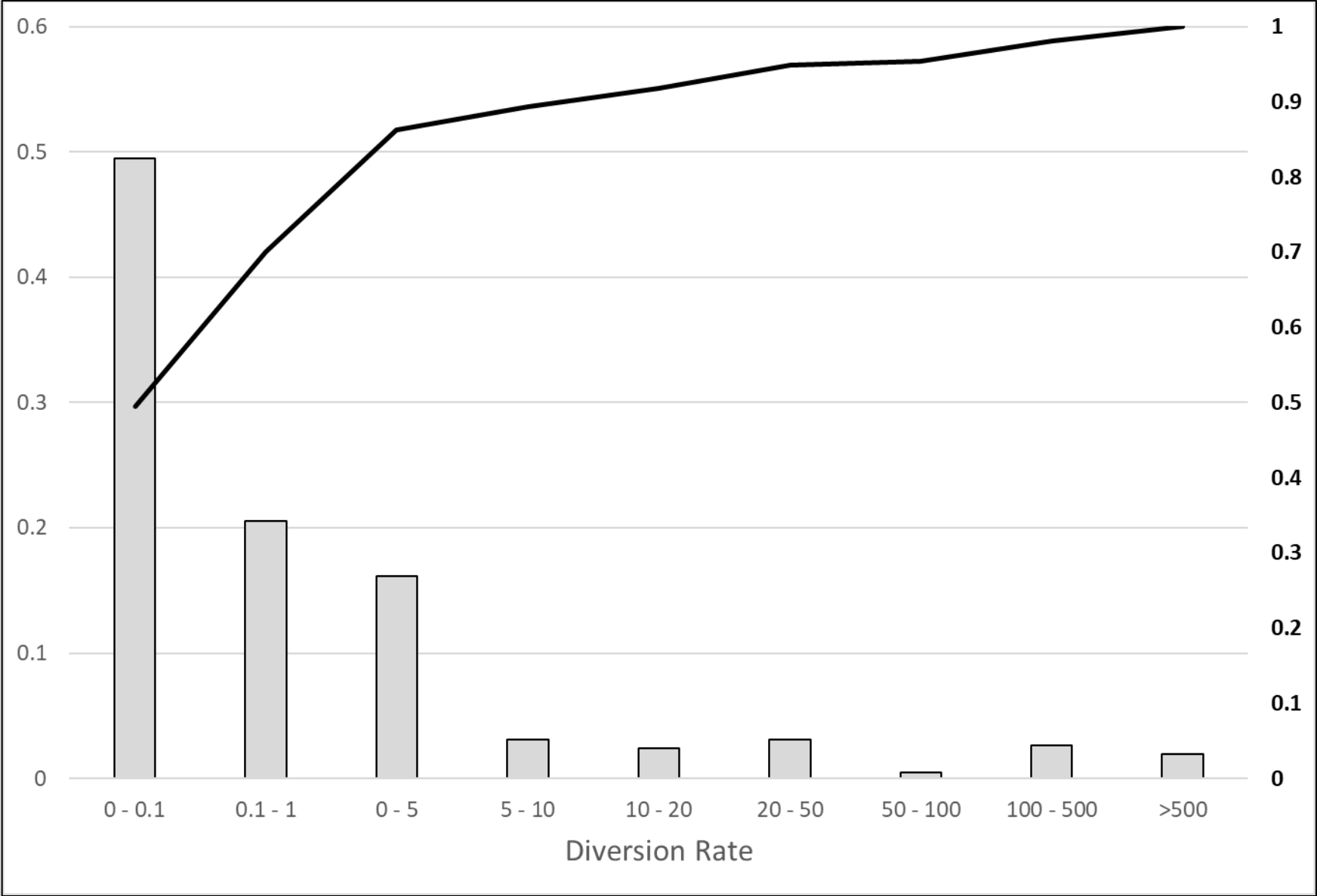
Administrative Questions

- De Minimis Rights: 1257
- Instream Stockwater: 28
- Nonconsumptive: 145
- Mitigated: 63

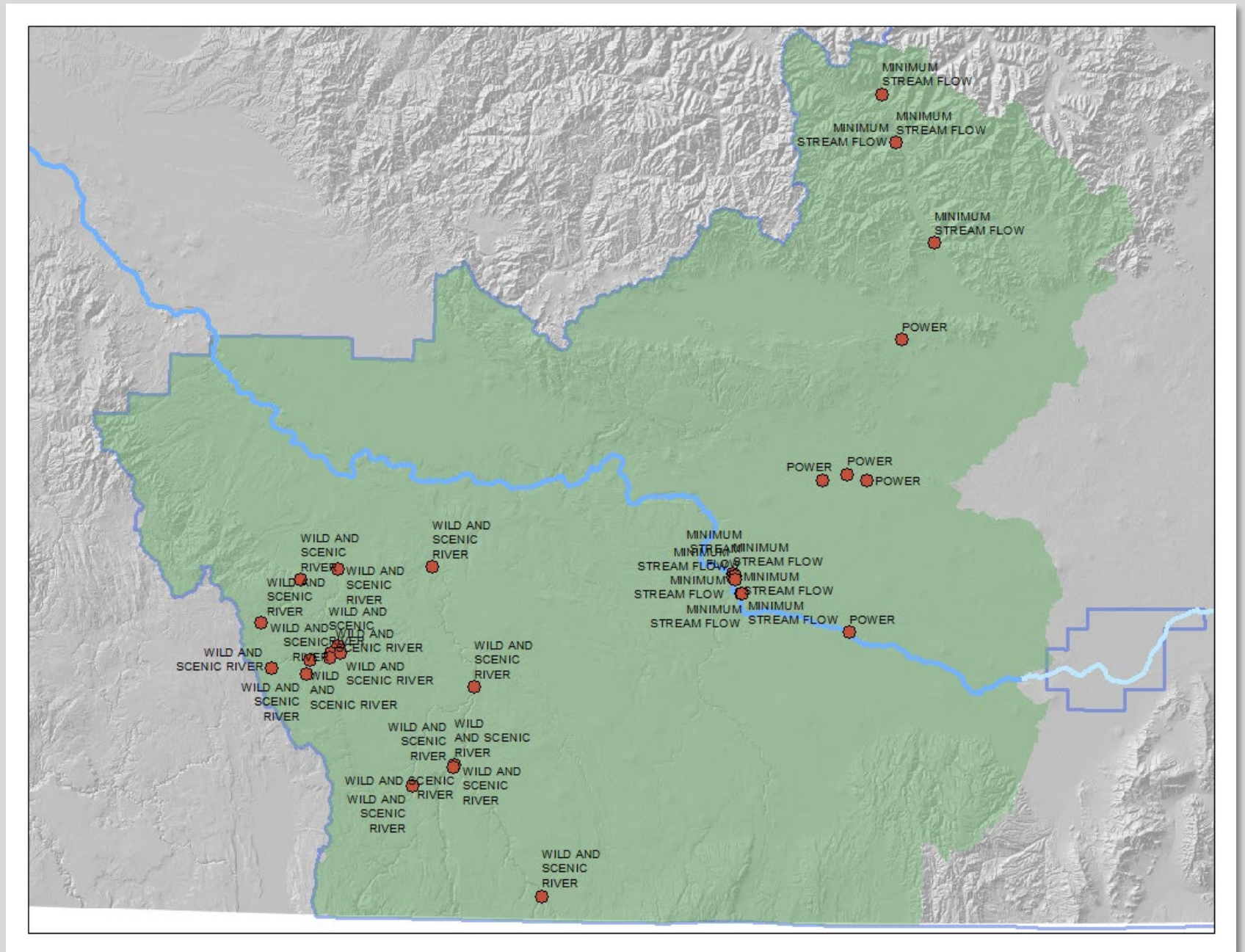
WR surface
water PODs
classified by
diversion rate



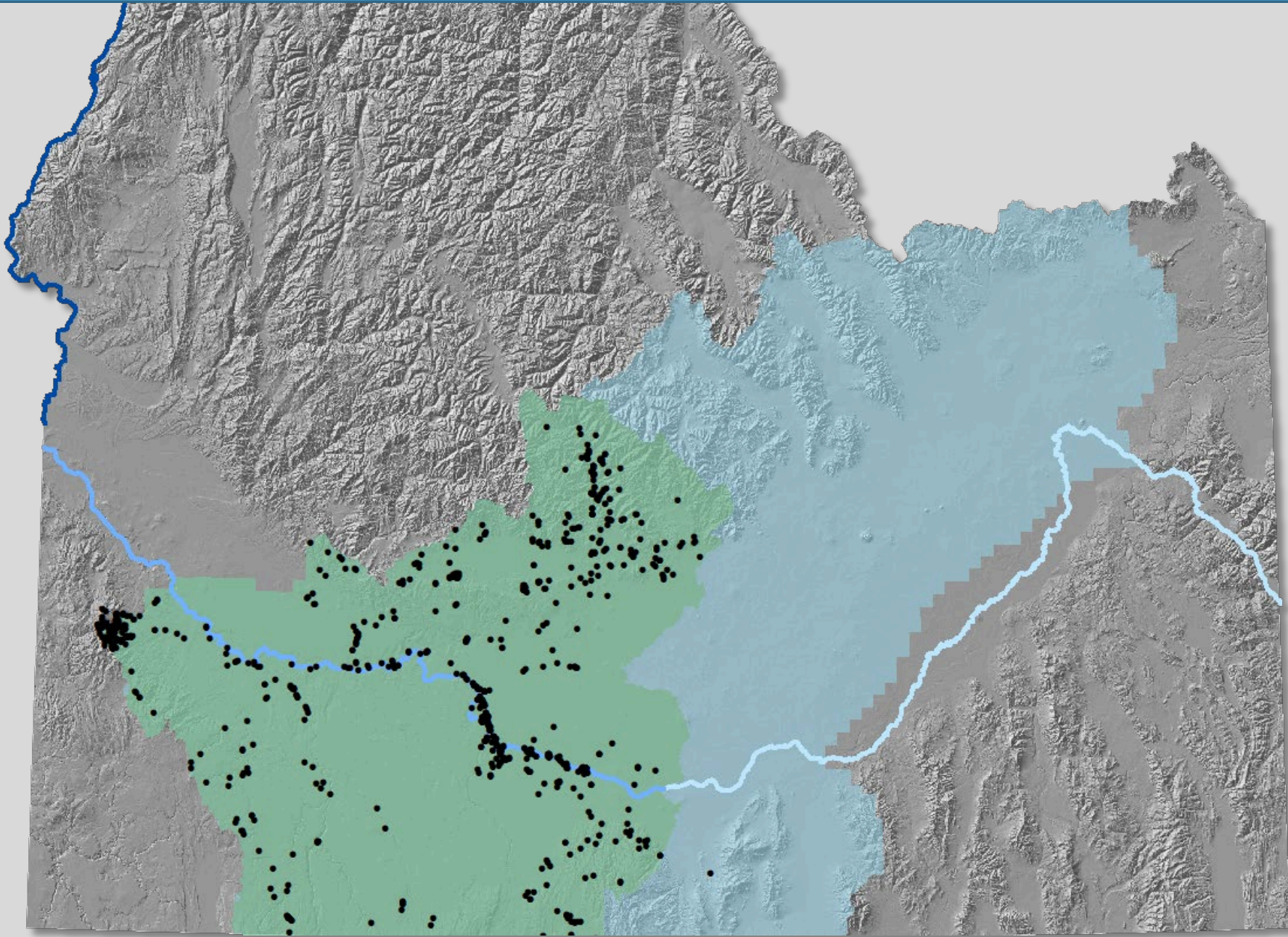
Distribution of
surface water
diversion rates



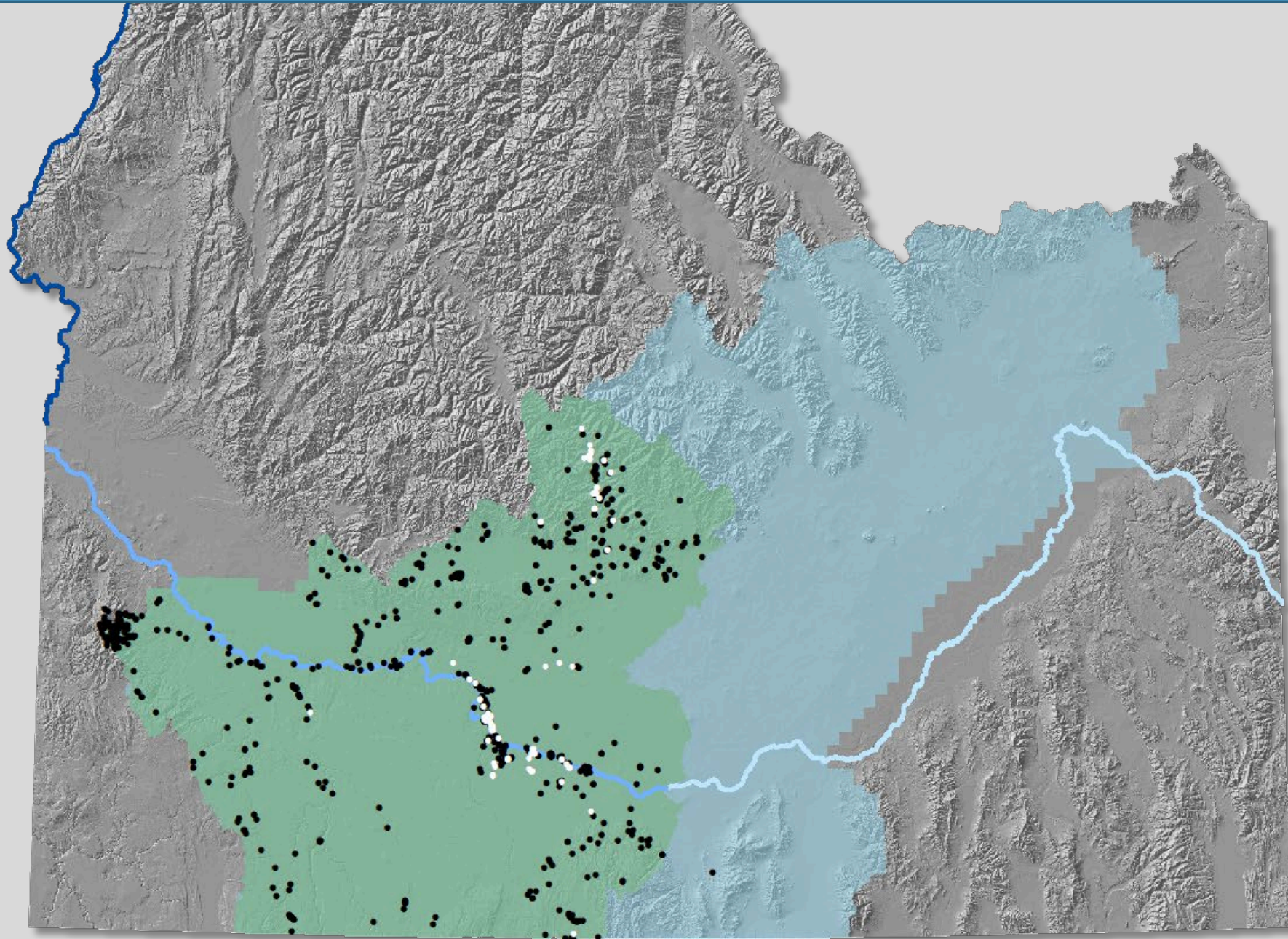
Highest rate classification



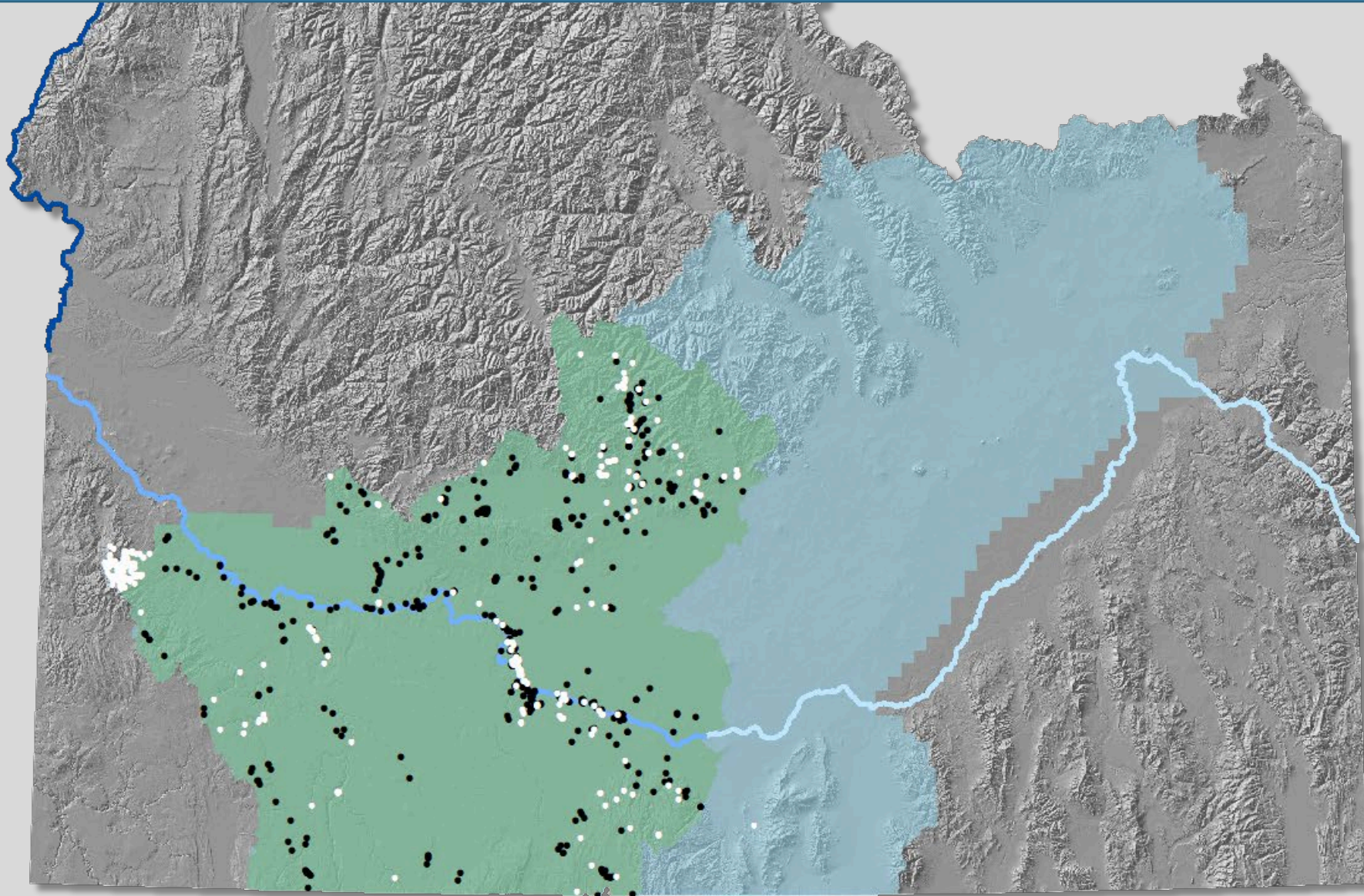
Surface Water Rights



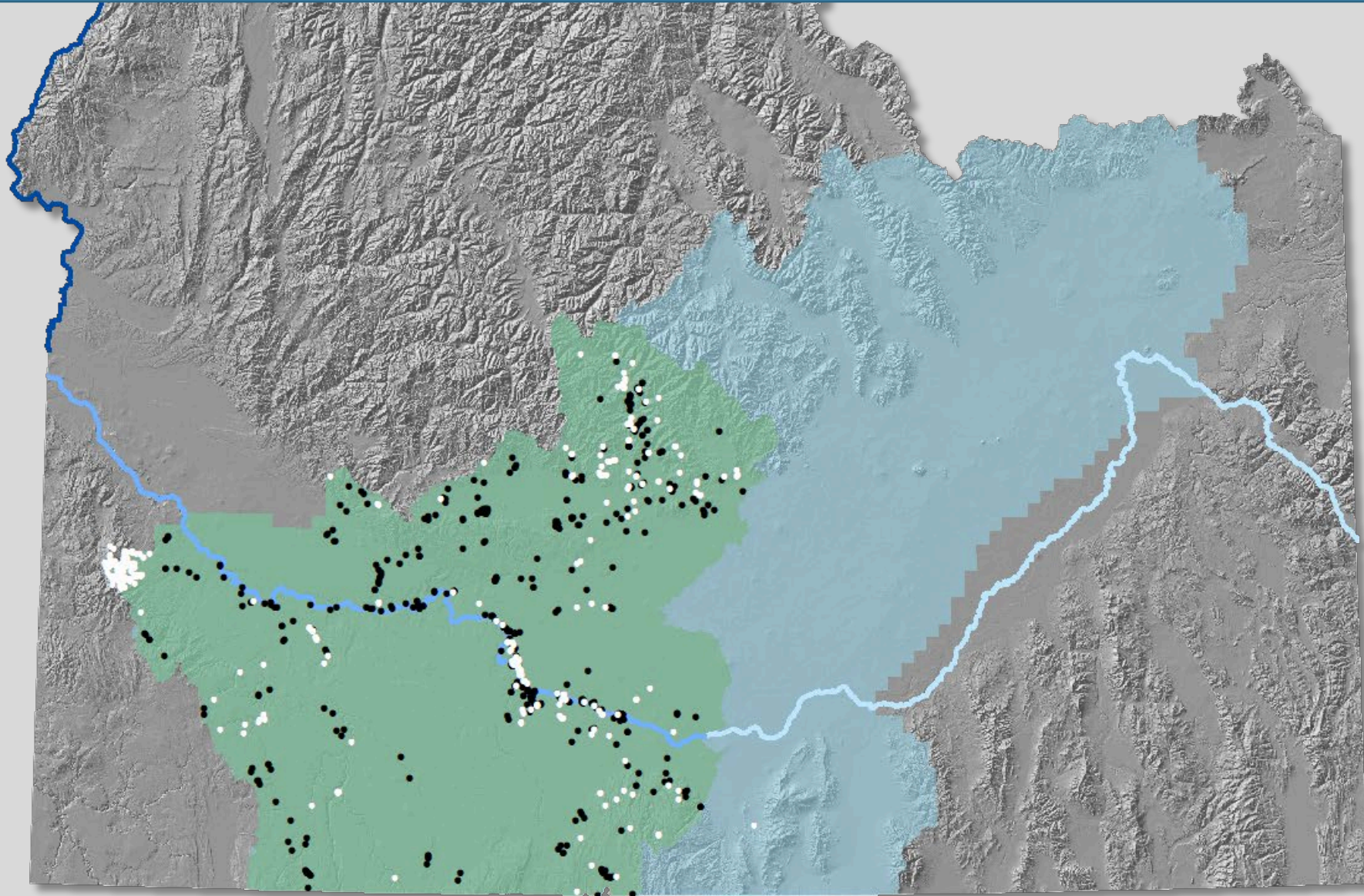
Nonconsumptive



Nonconsumptive, deminimis, and instream stockwater

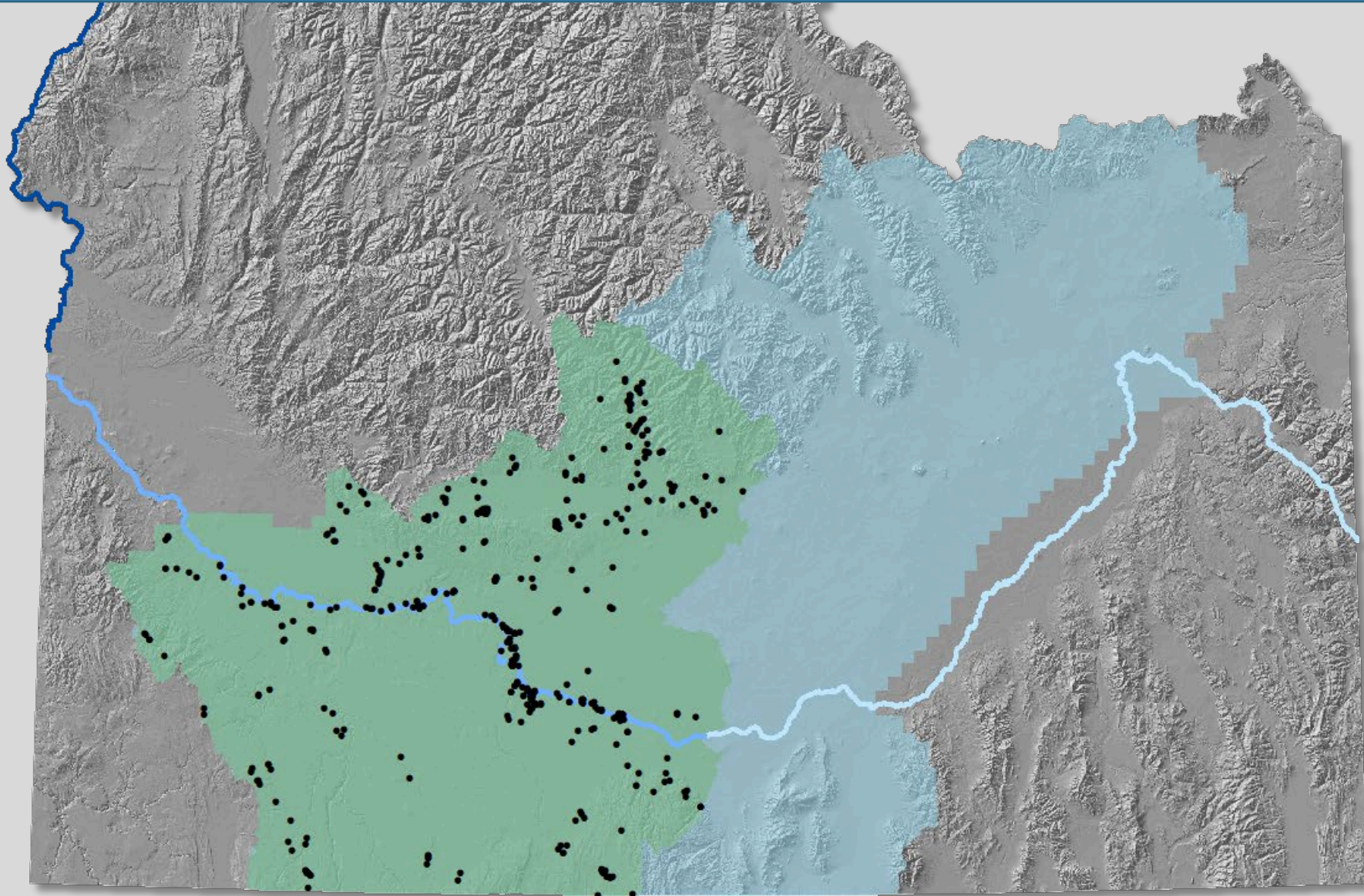


Nonconsumptive, deminimis, instream stockwater, & mitigated

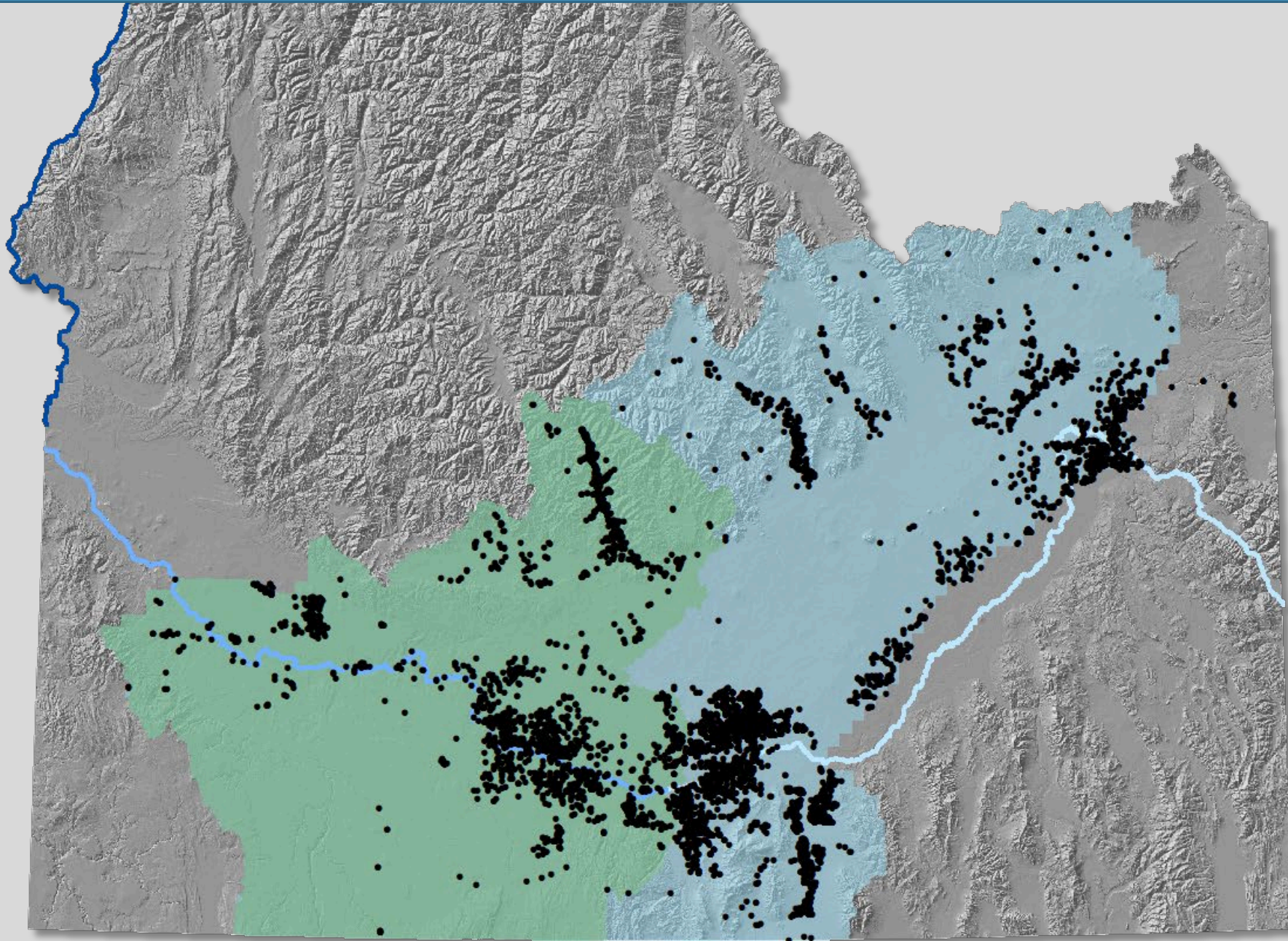


Surface Water Rights – Remaining

No nonconsumptive, de minimis, instream stockwater, or mitigated



Groundwater Rights



Groundwater Rights – Remaining

No nonconsumptive, deminimis, or mitigated

