

2022 Swan Falls Technical Working Group

Presented by Ethan Geisler

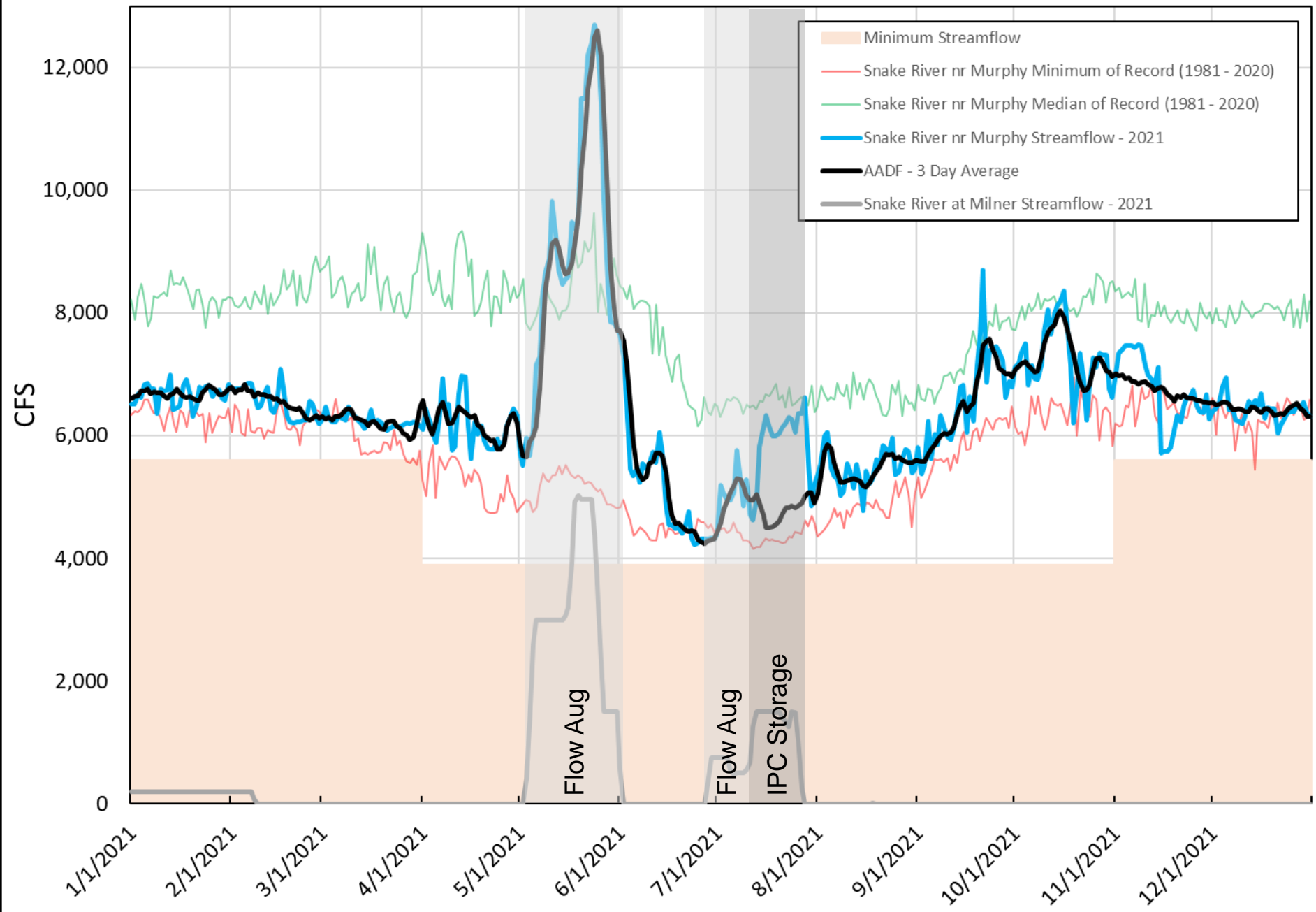
February 2, 2022



IDAHO DEPARTMENT OF
WATER RESOURCES



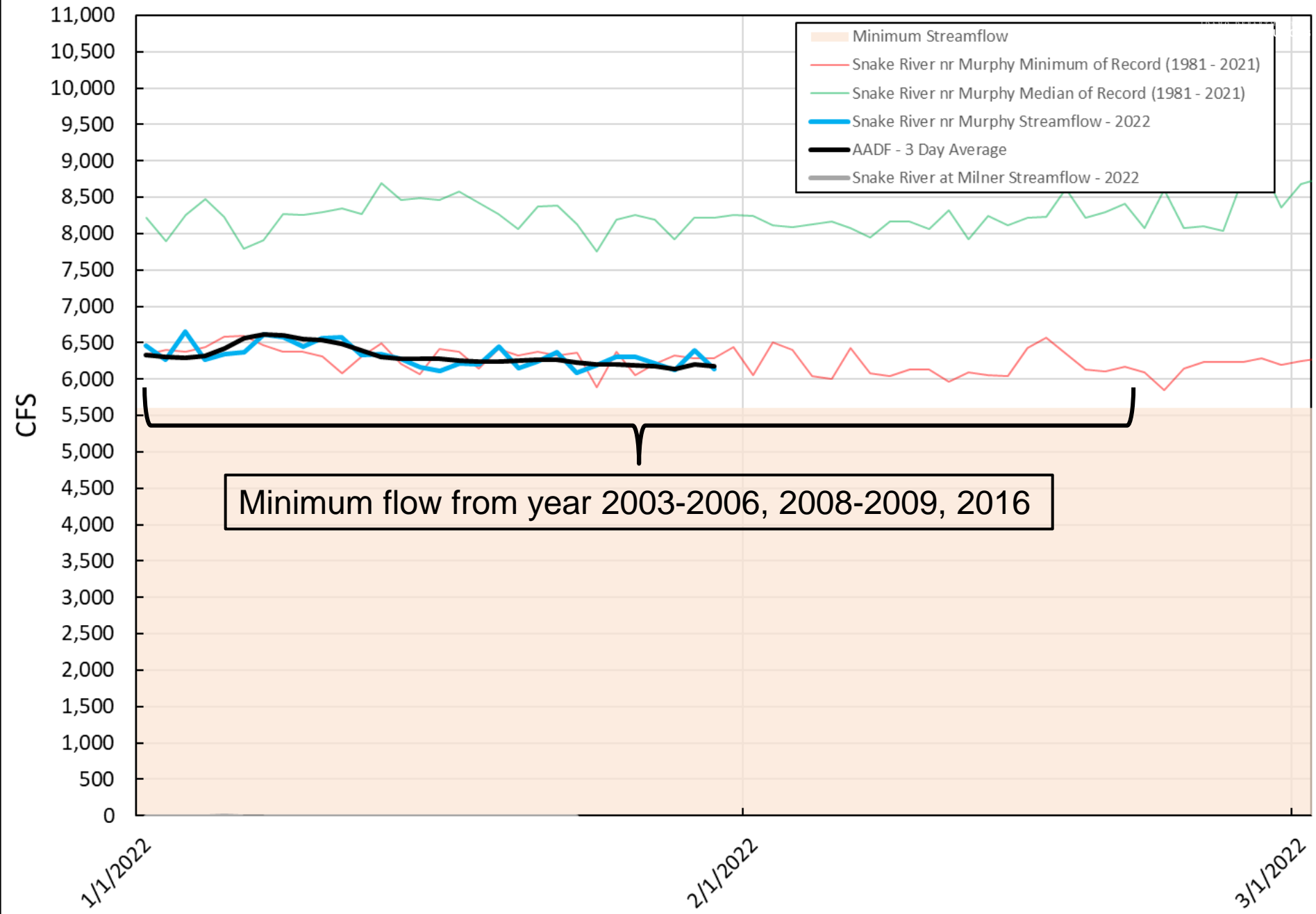
Streamflow at Snake River near Murphy



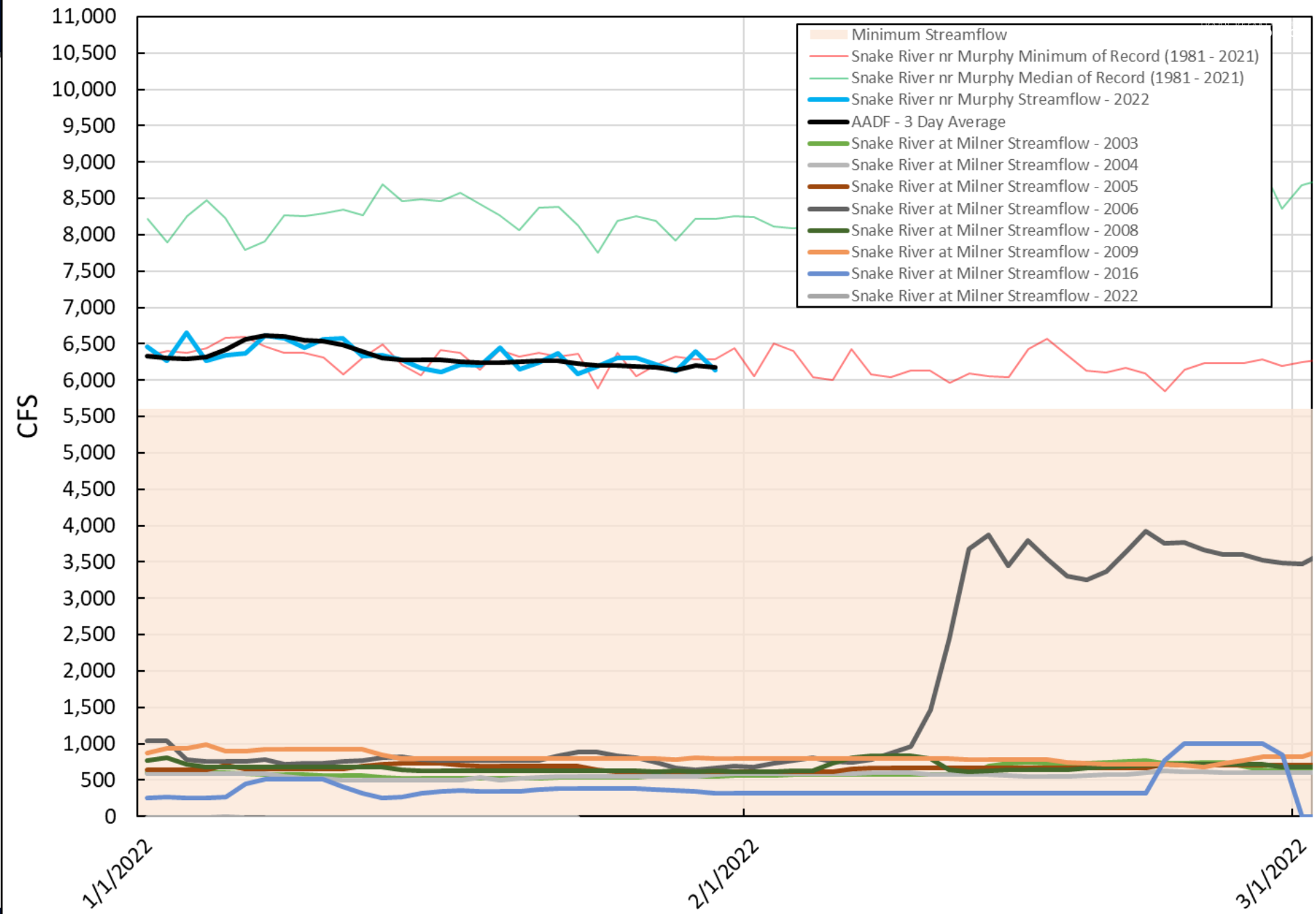
Streamflow at Snake River near Murphy



Snake River Streamflow



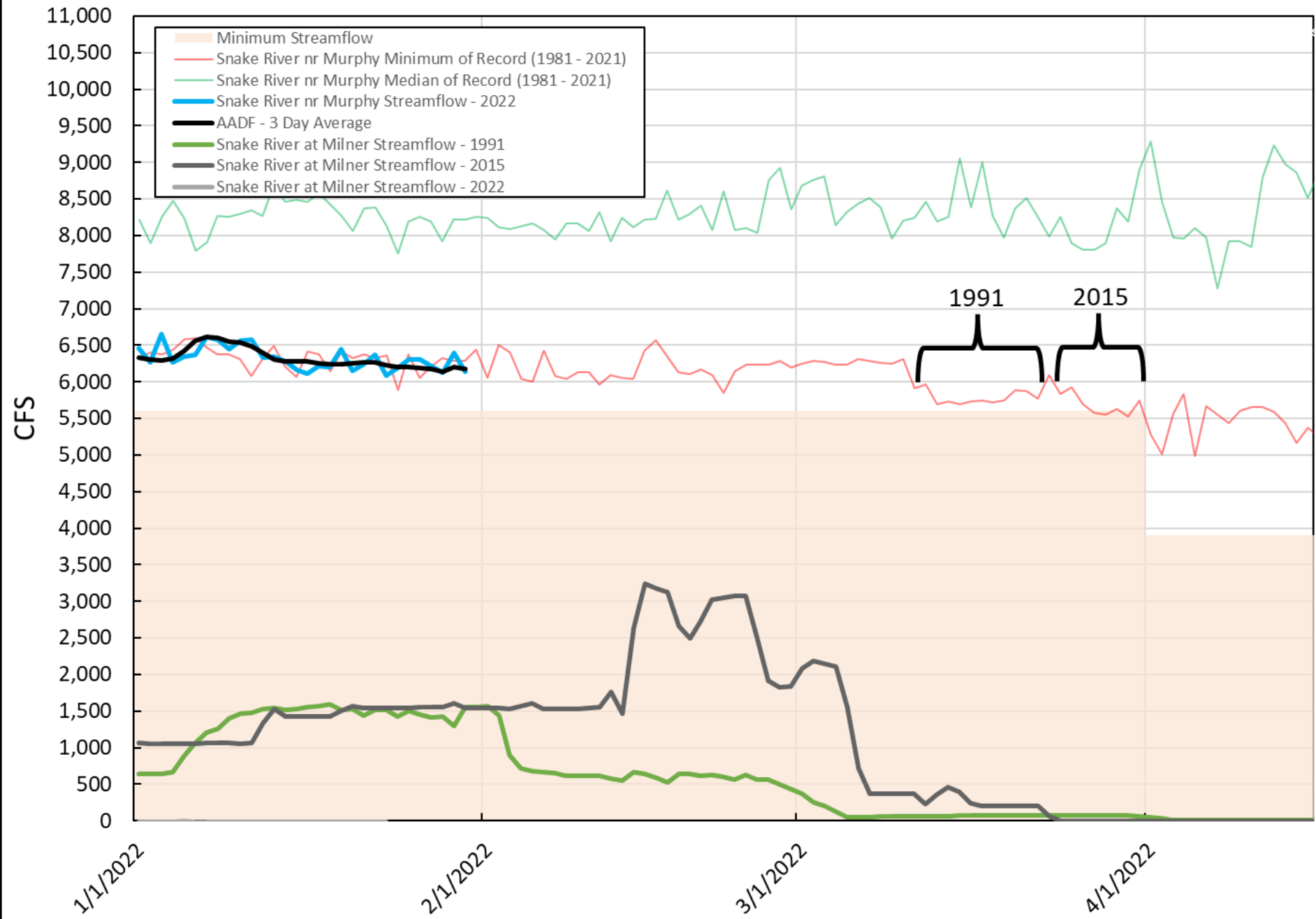
Snake River Streamflow



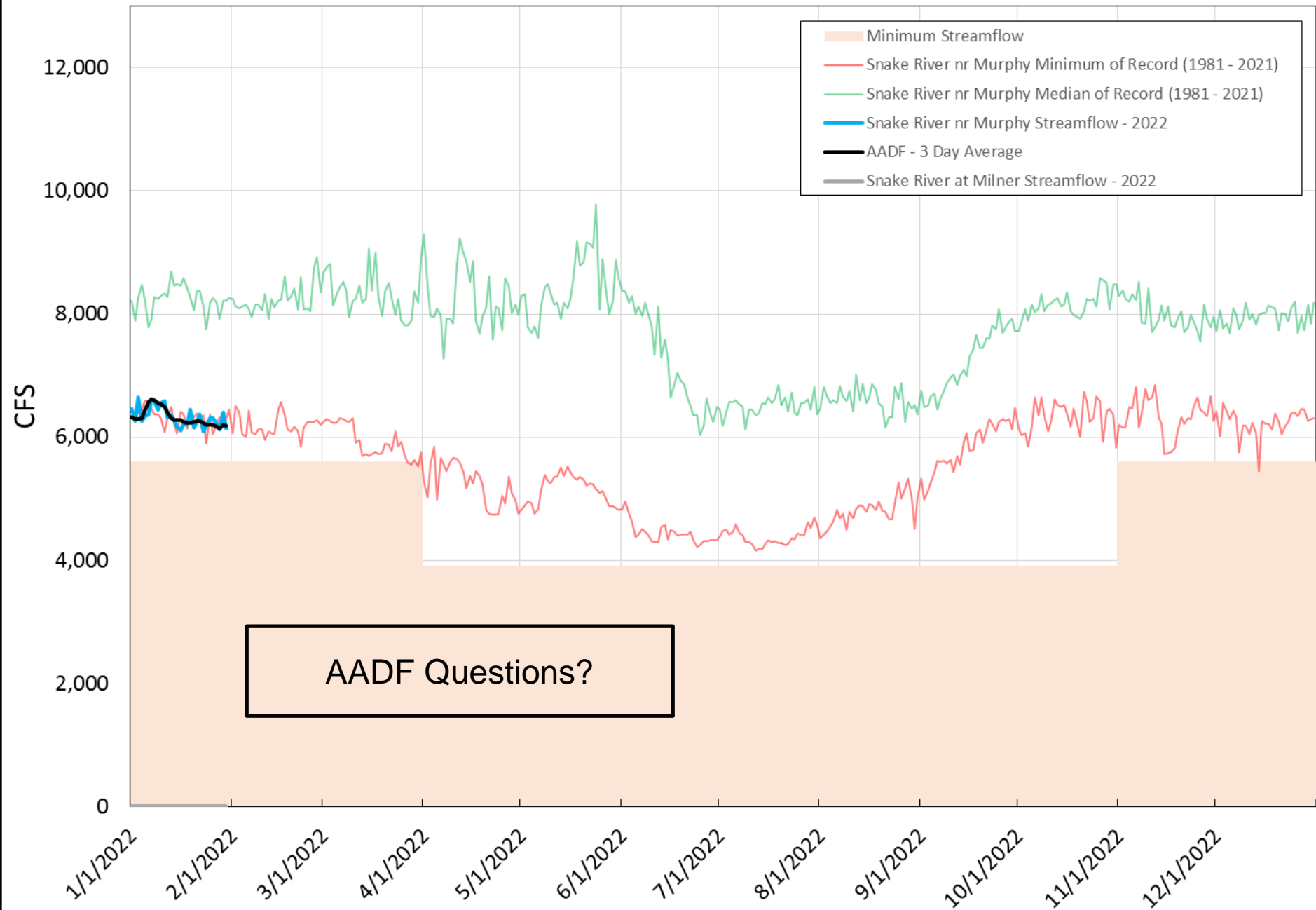
Streamflow at Snake River near Murphy



Snake River Streamflow



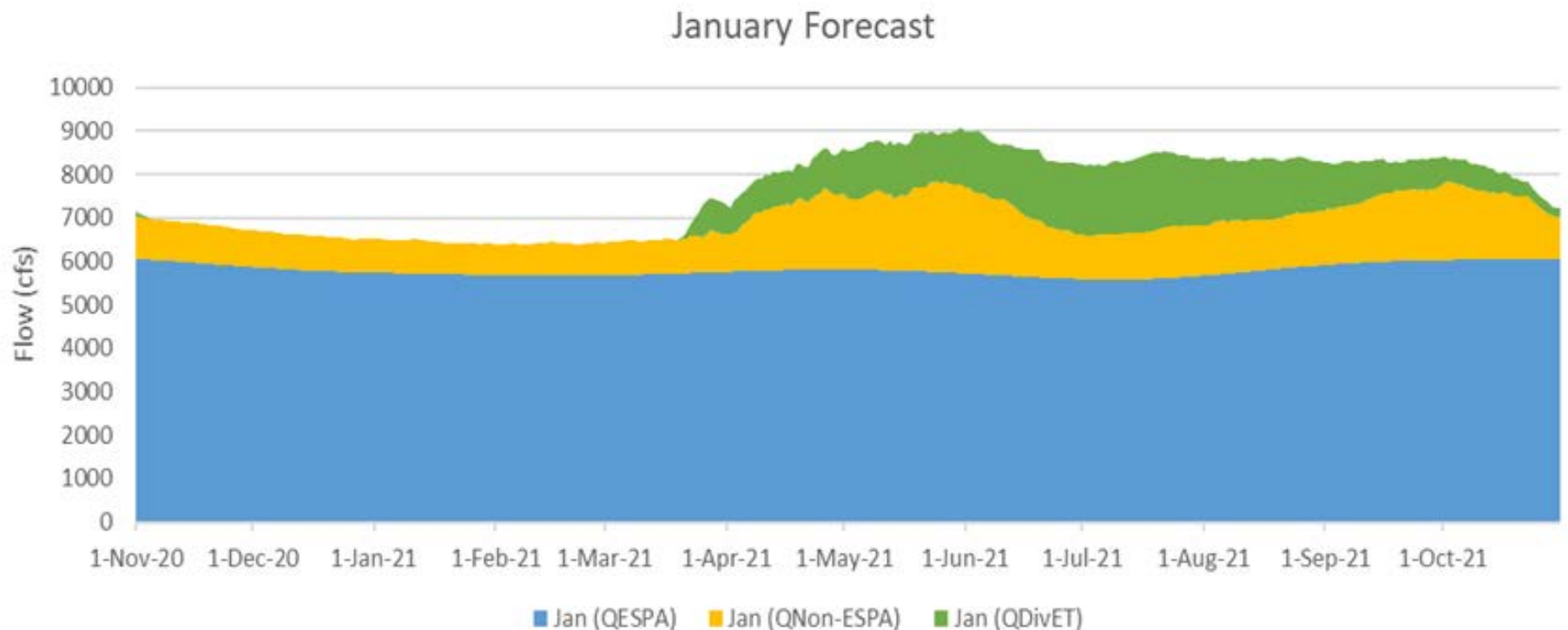
Streamflow at Snake River near Murphy



Swan Falls Forecast Tool

Comments and Suggestions for ESPAM 2.2 update

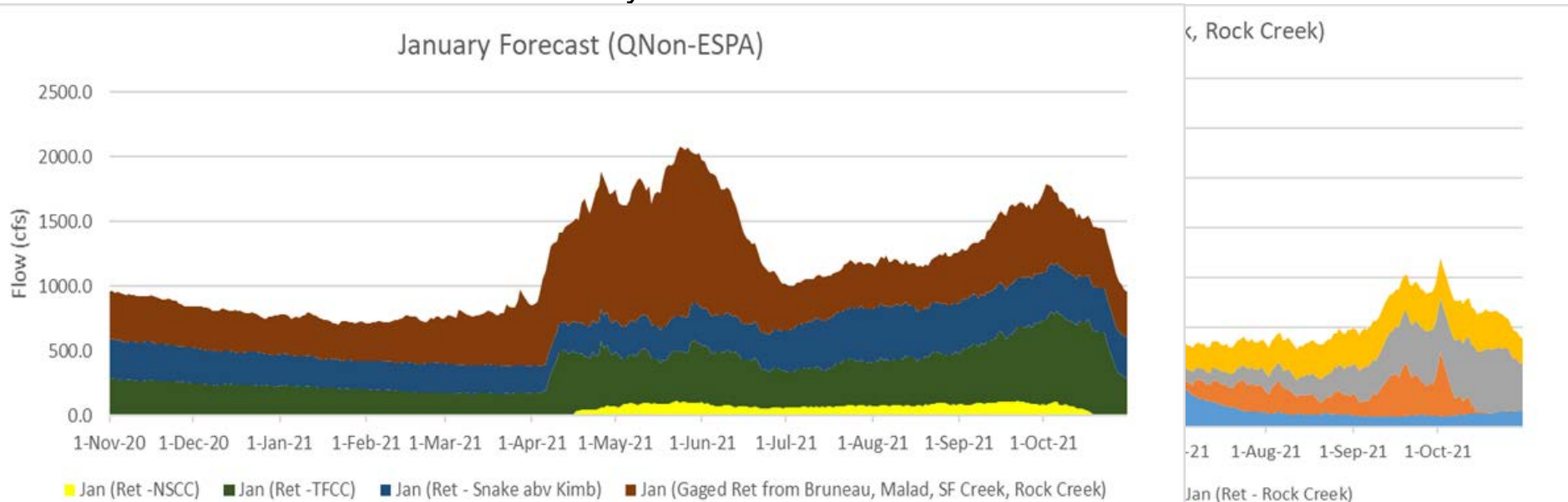
1. Add ReadMe Tab into the excel document
2. Add plots to identify magnitudes of different components
 1. Discharge from ESPA, Discharge from Non-ESPA, and consumptive diversions



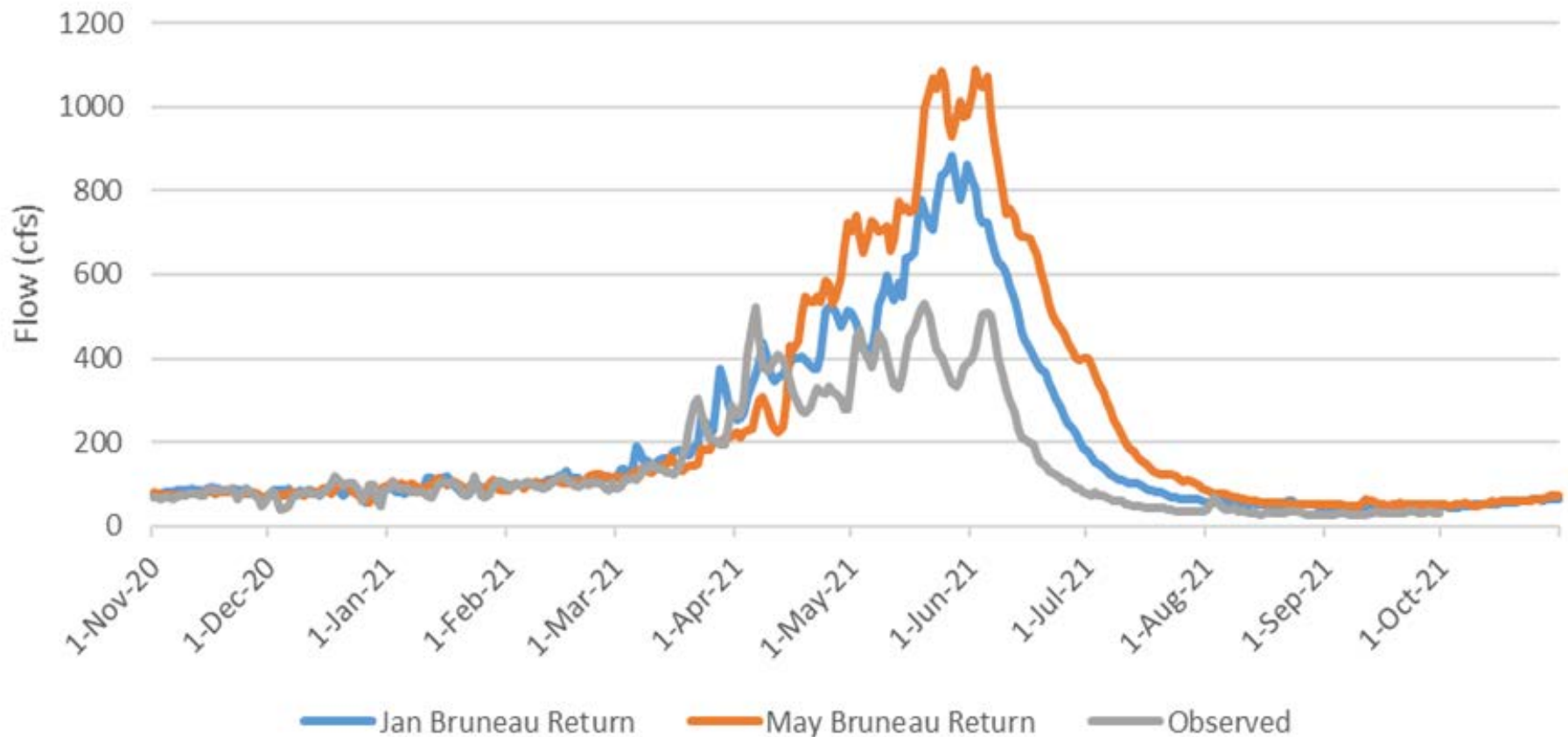
Swan Falls Forecast Tool

Comments and Suggestions for ESPAM 2.2 update

1. Add ReadMe Tab into the excel document
2. Add plots to identify magnitudes of different components
 1. Discharge from ESPA, Discharge from Non-ESPA, and consumptive diversions
 2. Tributary Flow Plot
 3. Discharge from Non-ESPA: Return Flow (TFCC and NSCC), Tributary Flow, and Snake River above Kimberly



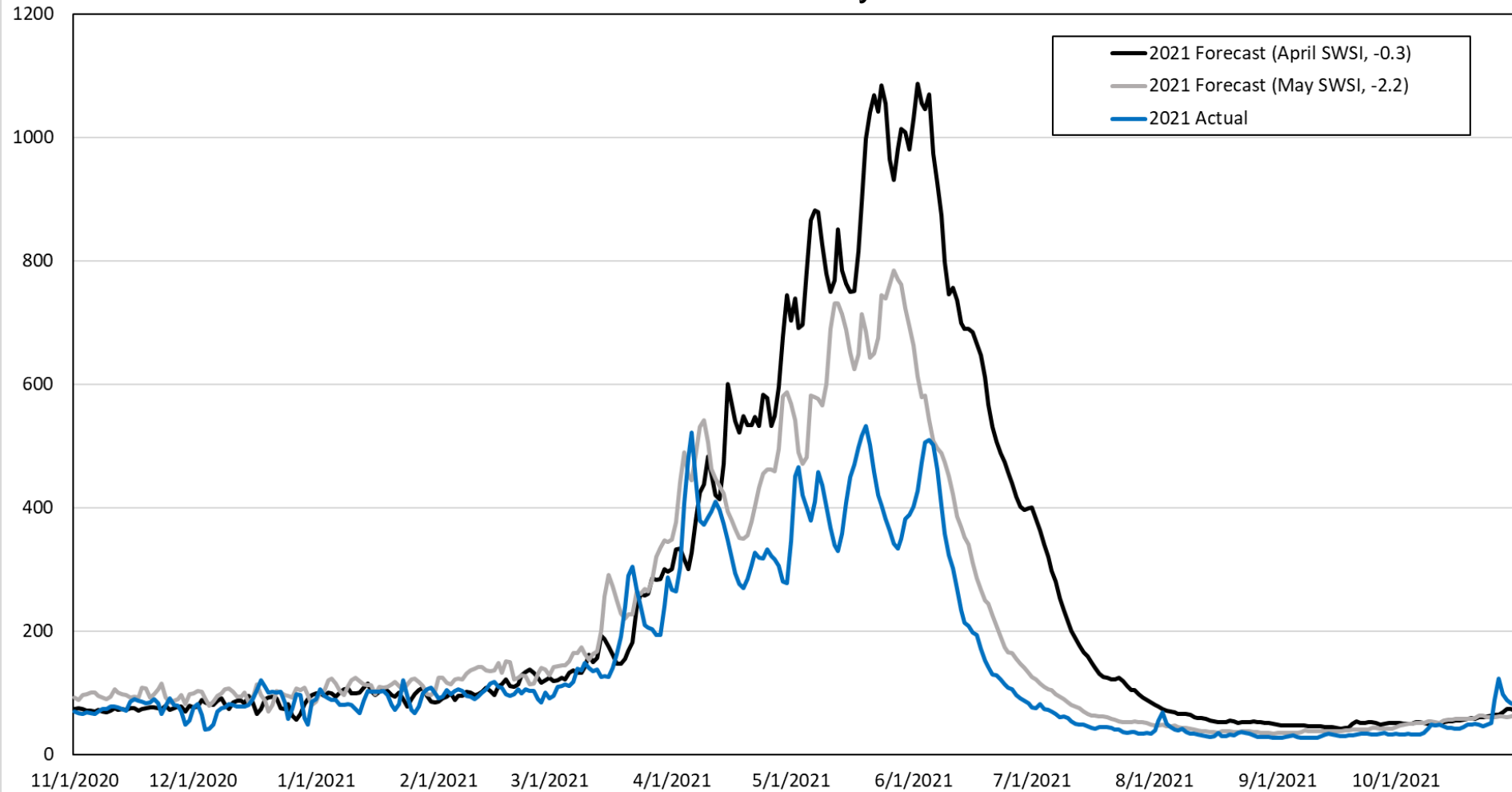
2021 Bruneau Forecast



Jan SWSI = -1.3

Apr SWSI = -0.3

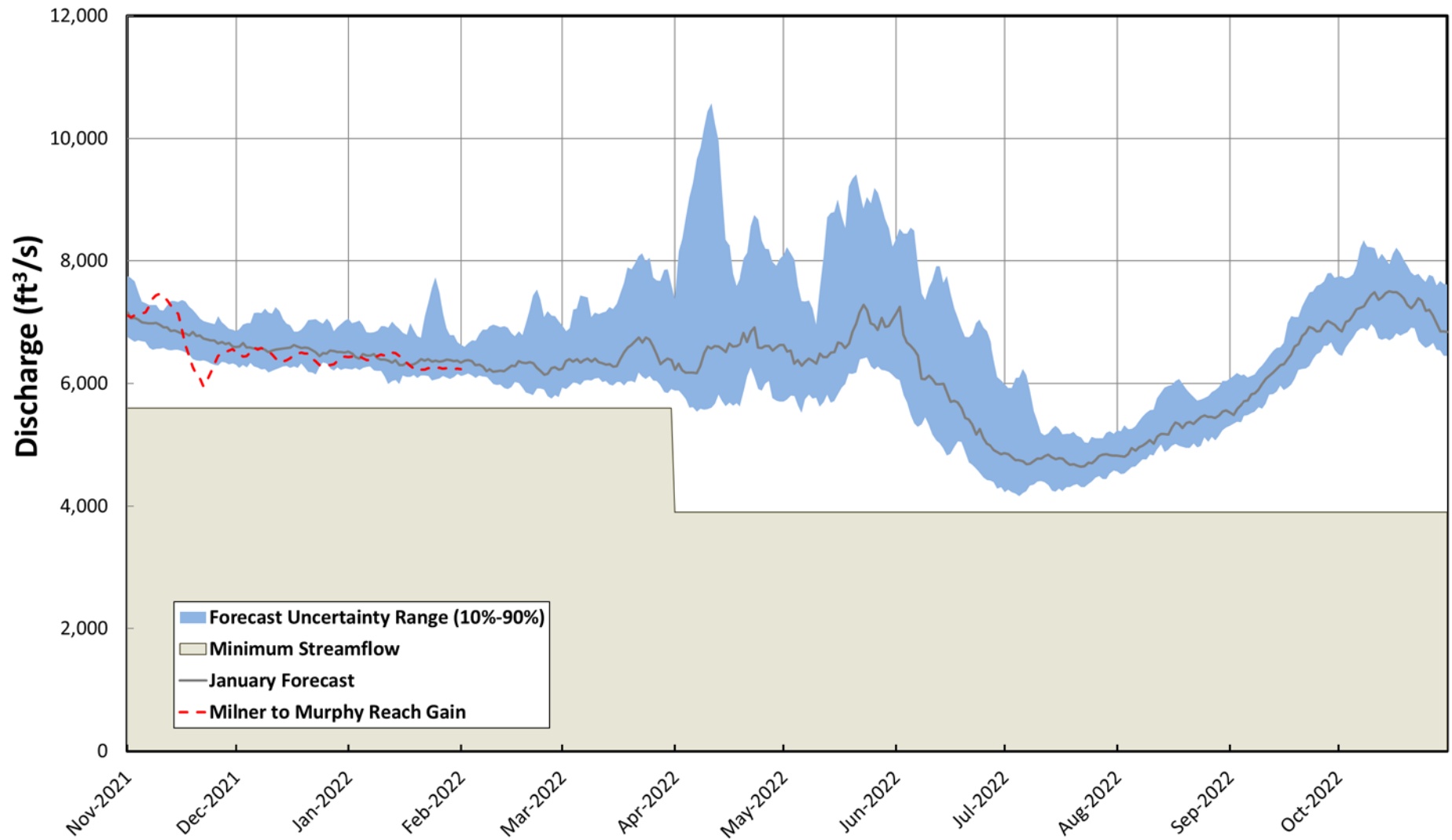
2021 Bruneau May Forecast



Swan Falls Forecast Tool

- Awaiting Northside Canal Company (NSCC) 2021 data
 - Median value from 2002-2020 used for Forecast tool
- NRCS SWSI values no longer available in January for Big Wood and Bruneau basins (poor forecast prediction skill)
 - Estimated median (0.0 SWSI value)

2022 January Forecast



Questions?



IDAHO DEPARTMENT OF
WATER RESOURCES