

2020 Swan Falls Technical Working Group

Presented by Ethan Geisler

February 20, 2020





Snake River nr Murphy

Swan Falls Dam

CJ Strike Reservoir

Bliss Dam

Lower Salmon Falls Dam

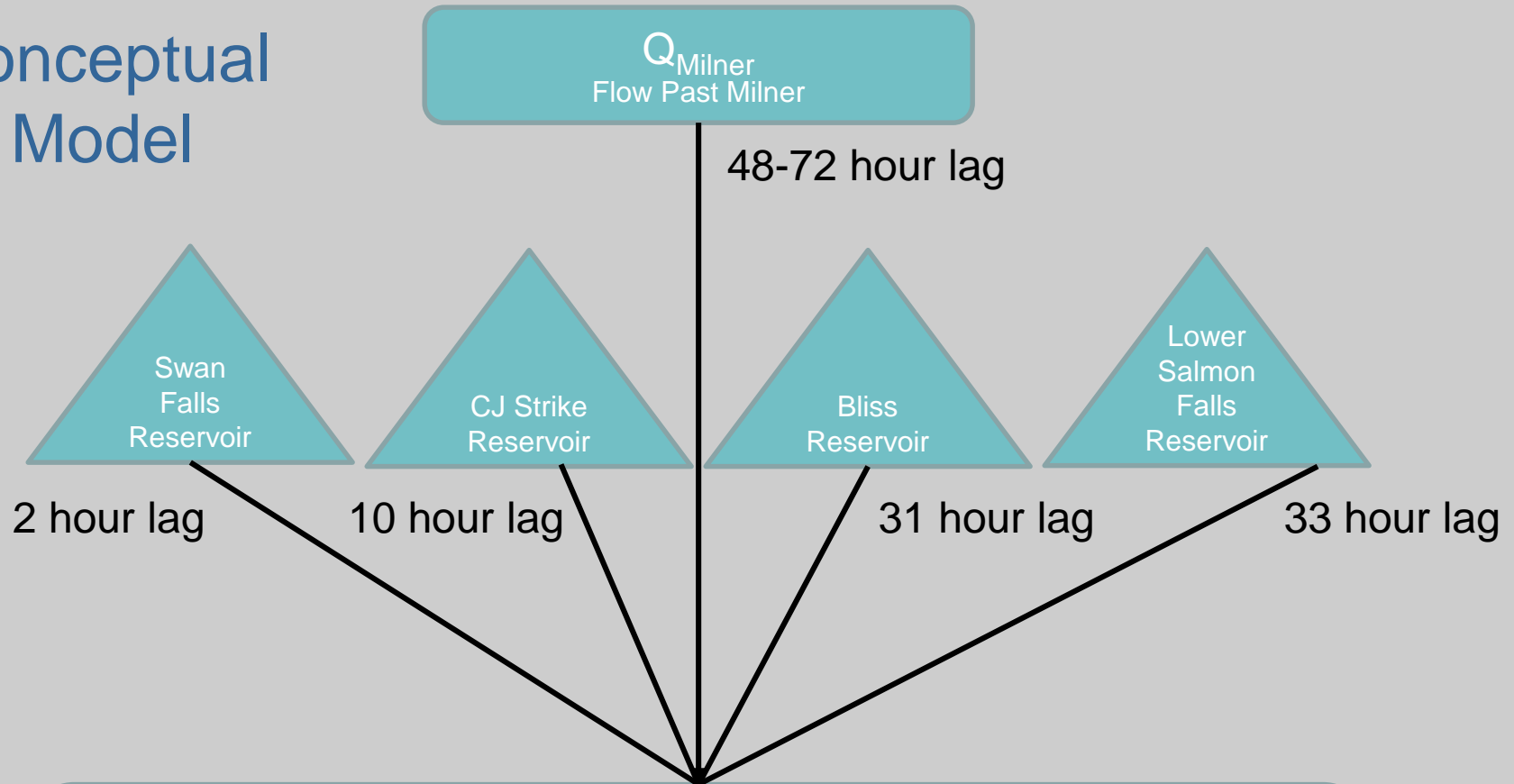
Snake River at Milner

Legend

- ▲ Idaho Power
- ▲ USGS



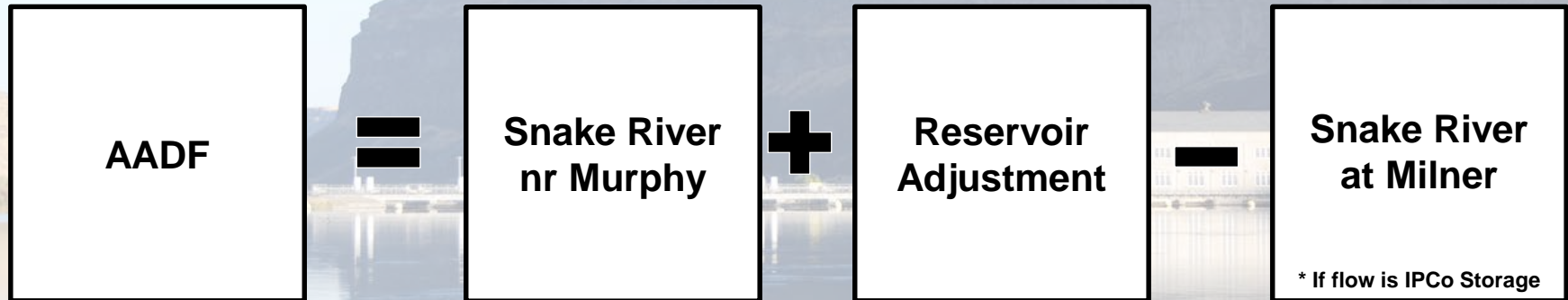
Conceptual Model



$$Q_{\text{AADF}} = Q_{\text{Murphy}} + \Delta S_{\text{SF}} + \Delta S_{\text{CJ}} + \Delta S_{\text{Bliss}} + \Delta S_{\text{LSF}}$$

If Idaho Power releases storage past Milner

$$Q_{\text{AADF}} = Q_{\text{Murphy}} + \Delta S_{\text{SF}} + \Delta S_{\text{CJ}} + \Delta S_{\text{Bliss}} + \Delta S_{\text{LSF}} - Q_{\text{Milner}}$$



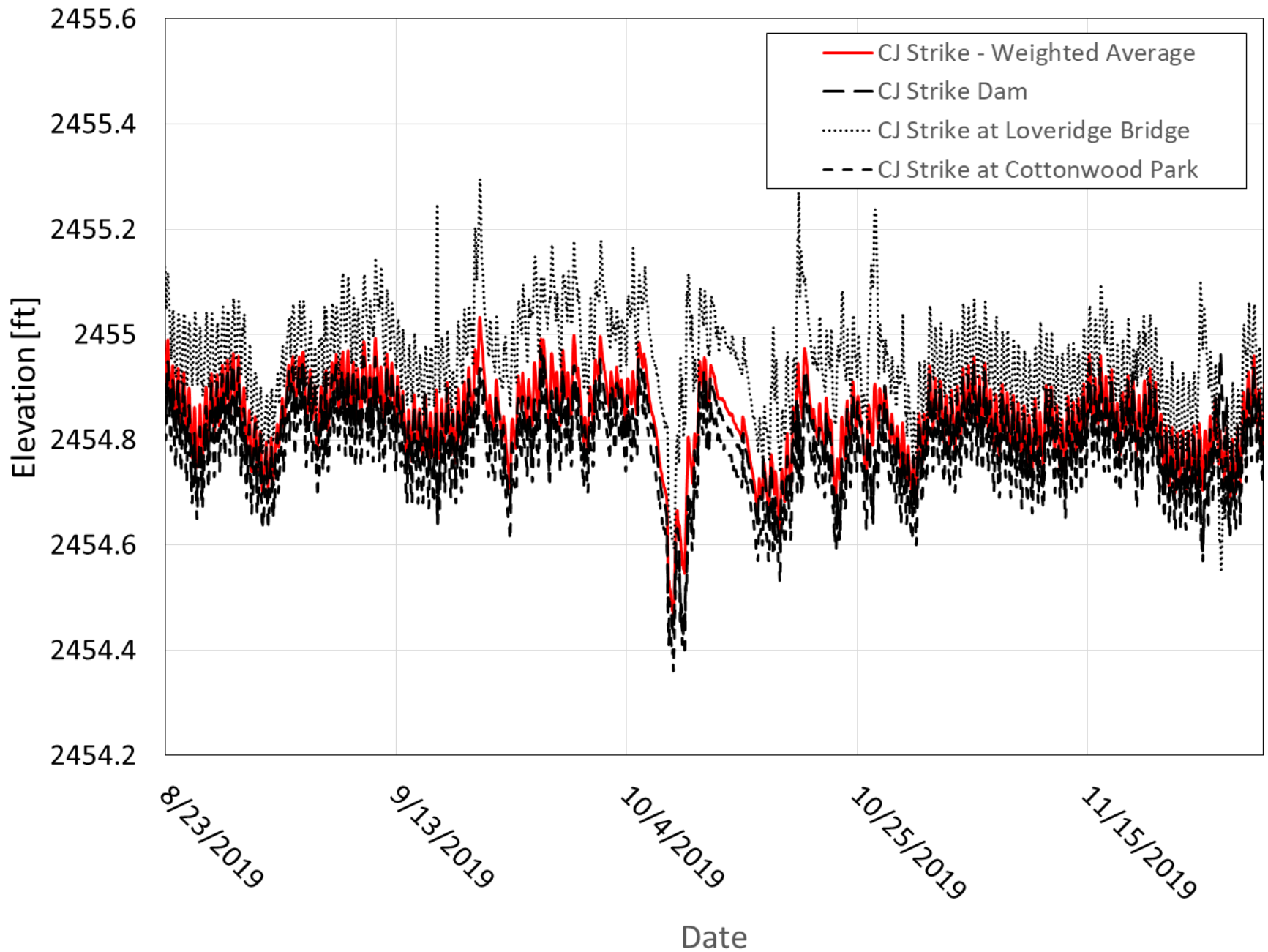
**Reservoir
Adjustment**

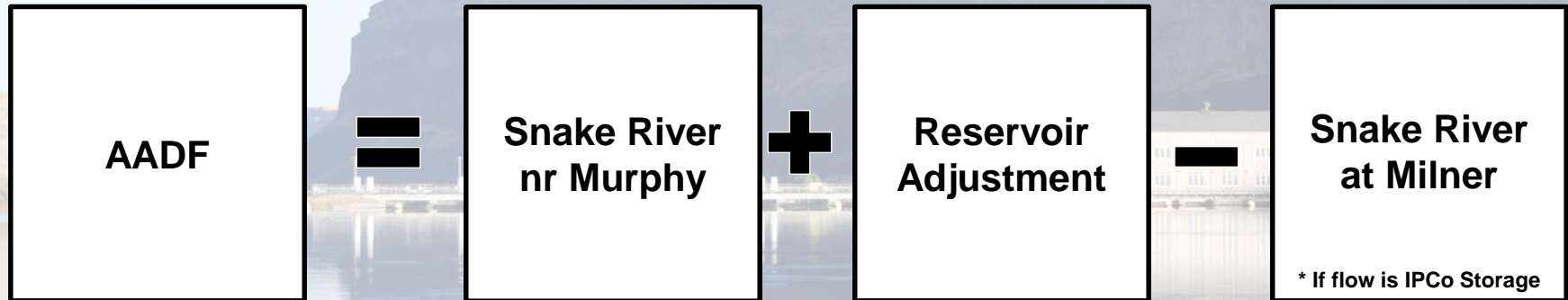
=

Change in Storage

- Based on stage at:
 - Lower Salmon Falls Dam
 - Bliss Dam
 - CJ Strike Dam (3 locations)
 - Swan Falls Dam

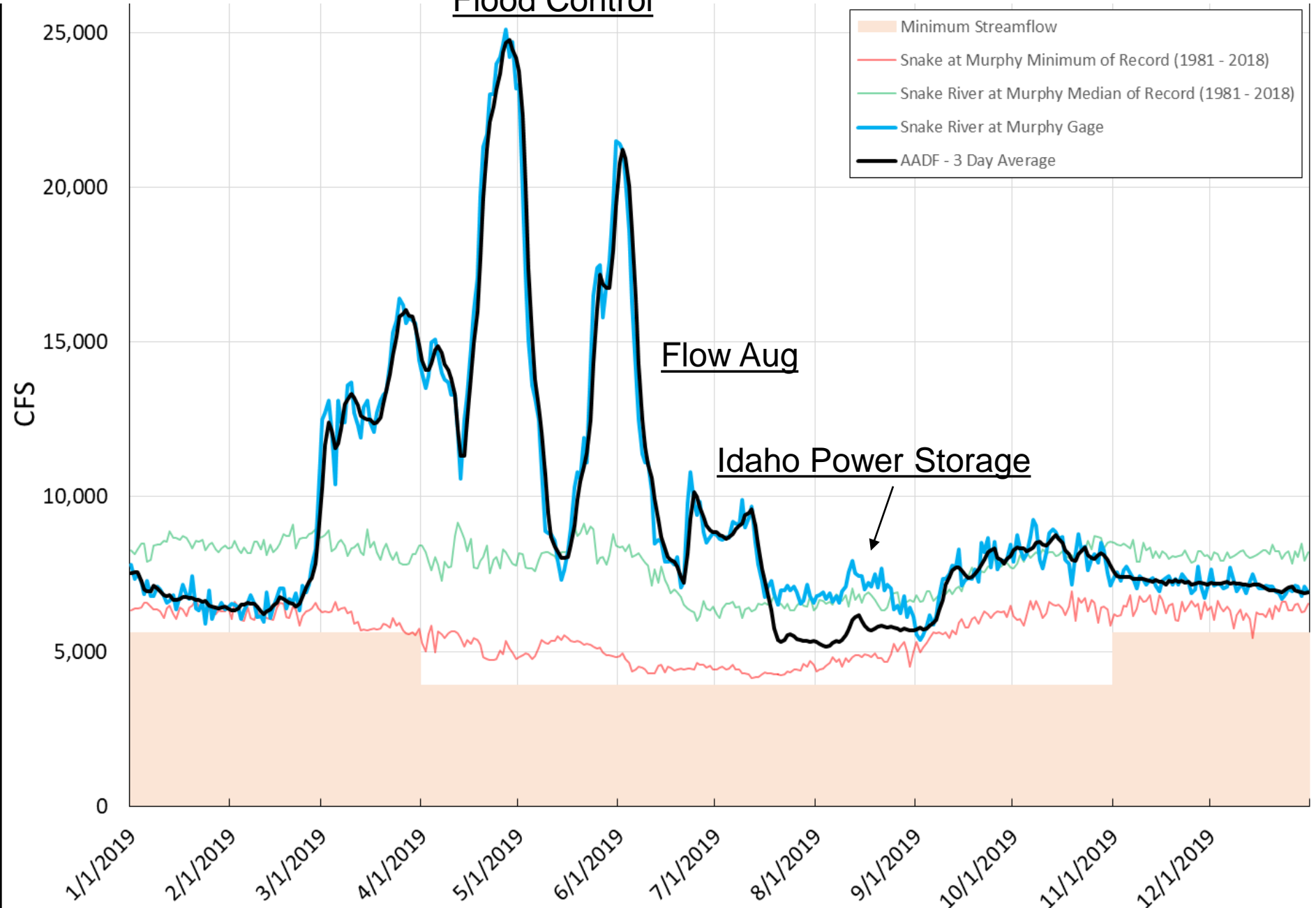
CJ Strike Weighted Average Calculation



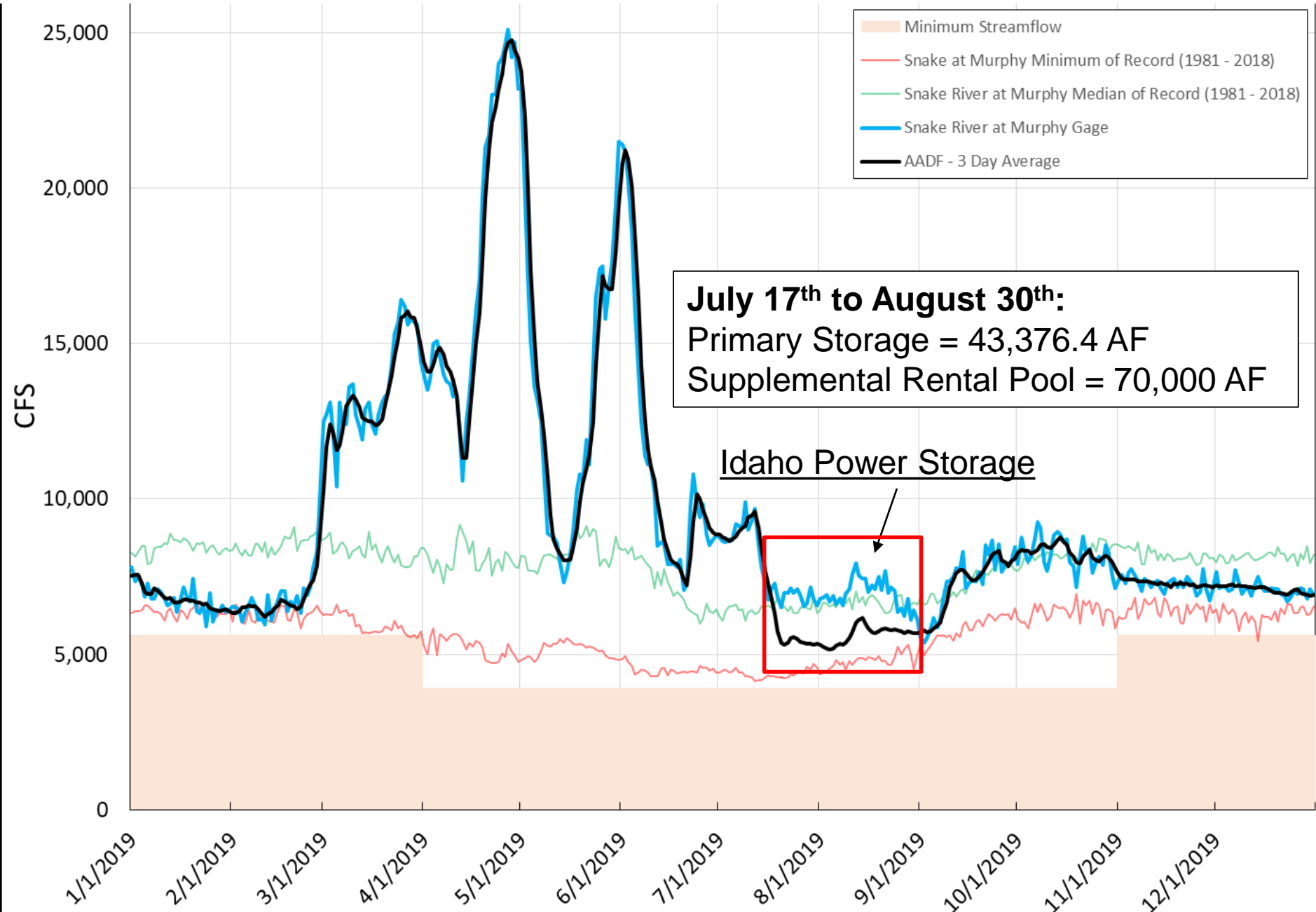


2019 Swan Falls AADF

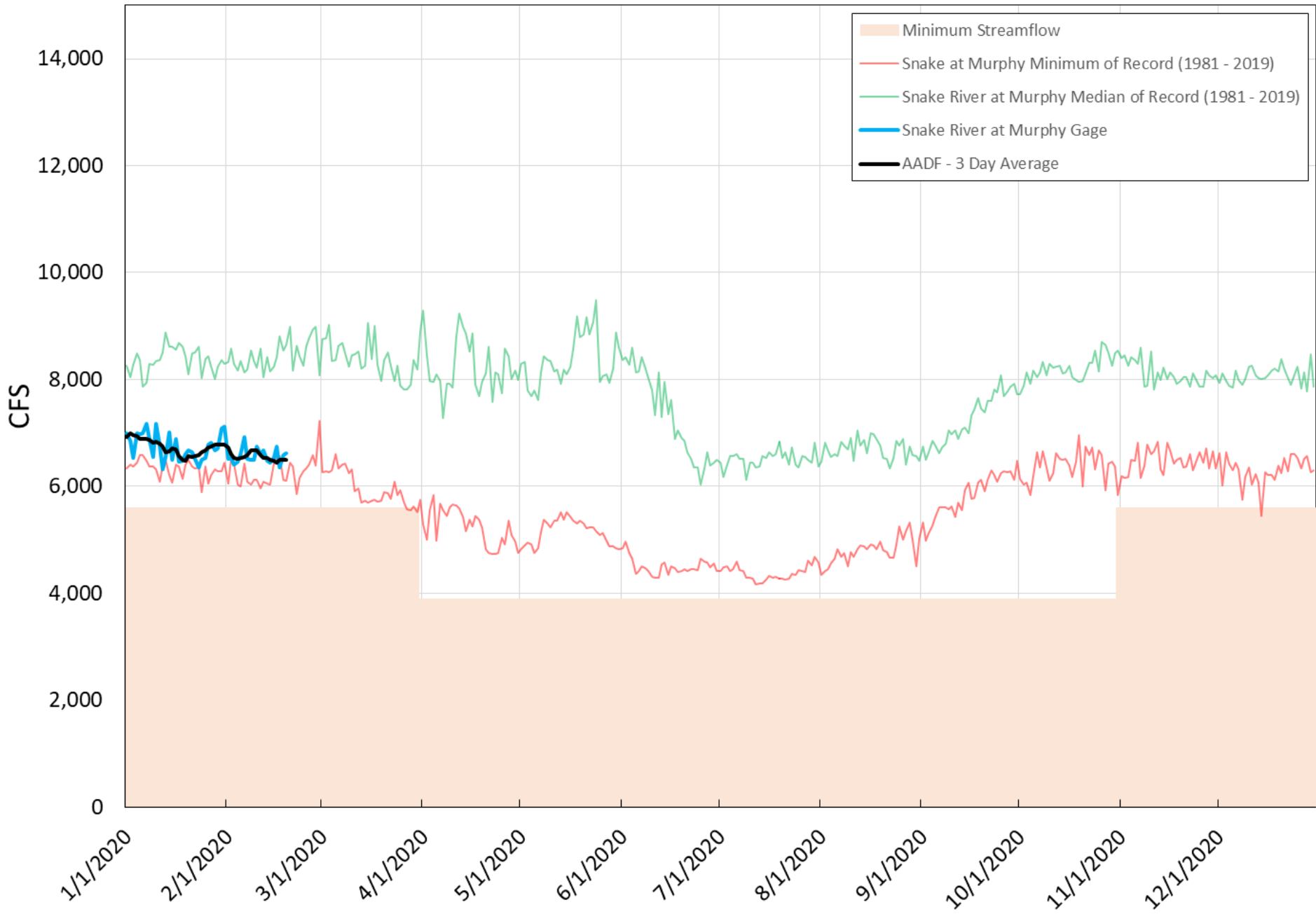
Flood Control



2019 Swan Falls AADF



2020 Swan Falls AADF





Swan Falls Settlement

Settlement Archive

Technical Working Group

Policy Group

AADF Calculations

Technical Archive

Media

ADJUSTED AVERAGE DAILY FLOW (AADF) CALCULATIONS



Swan Falls Adjusted Average Daily Flow Calculation



3-Day Average AADF



AADF Graphs – Weekly Update

<https://idwr.idaho.gov/legal-actions/settlements/swan-falls/AADF-calculations.html>

Questions?

