

AADF Lag Time Sensitivity Analysis



David Hoekema, Hydrologist,
Swan Falls Technical Working Group
10/20/2015

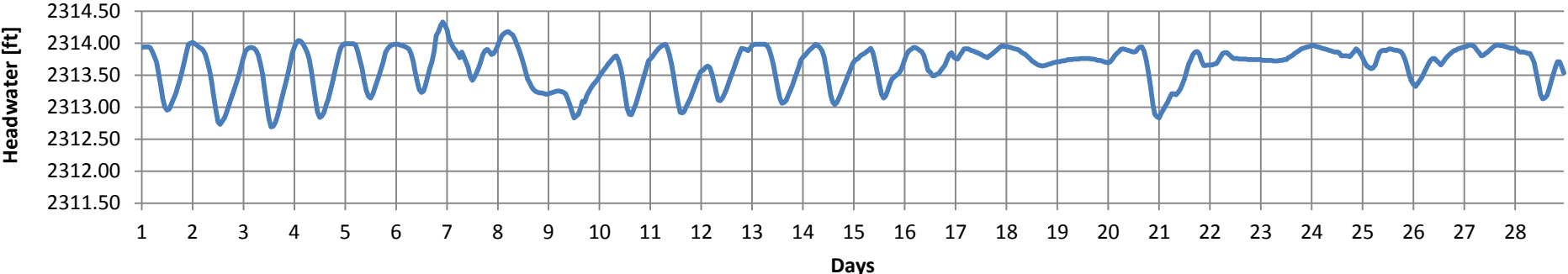
Estimated Lags for the AADF Calculation

- 1) Swan Falls—2 hrs
- 2) CJ Strike—10 hrs
- 3) Bliss—33 hrs
- 4) Lower Salmon Falls—35 hrs

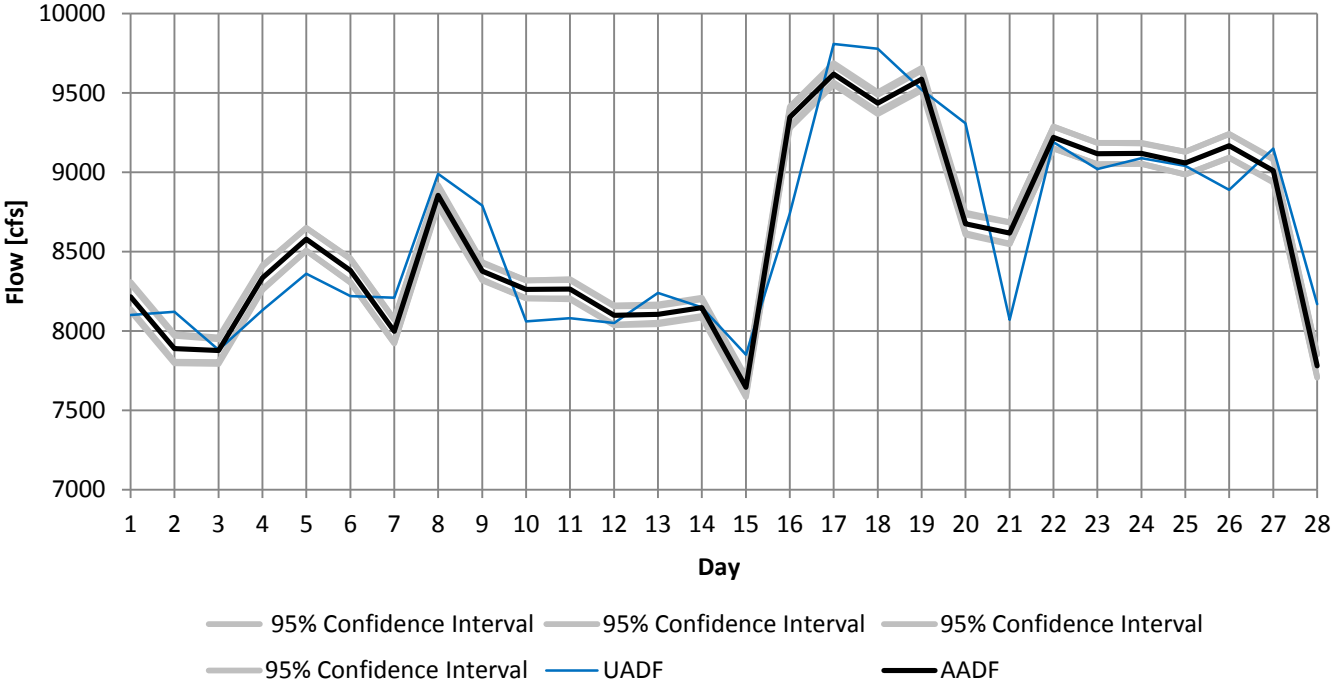
95% Confidence Interval (2 Standard Deviations)

[cfs]	Swan Falls	CJ Strike	Bliss	LSF
1-hour lag	57	157	7	21
2-hour lag	--	239	11	33.2

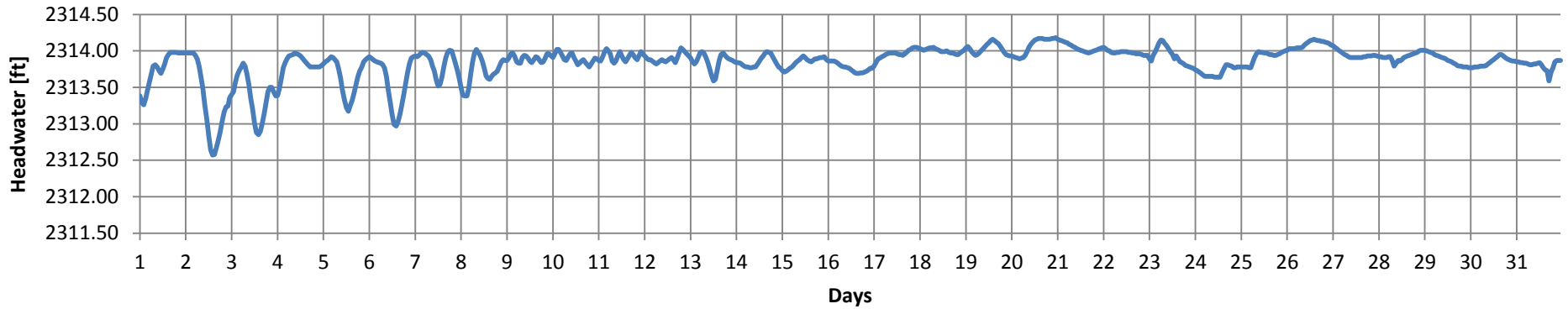
February: Swan Falls Headwater



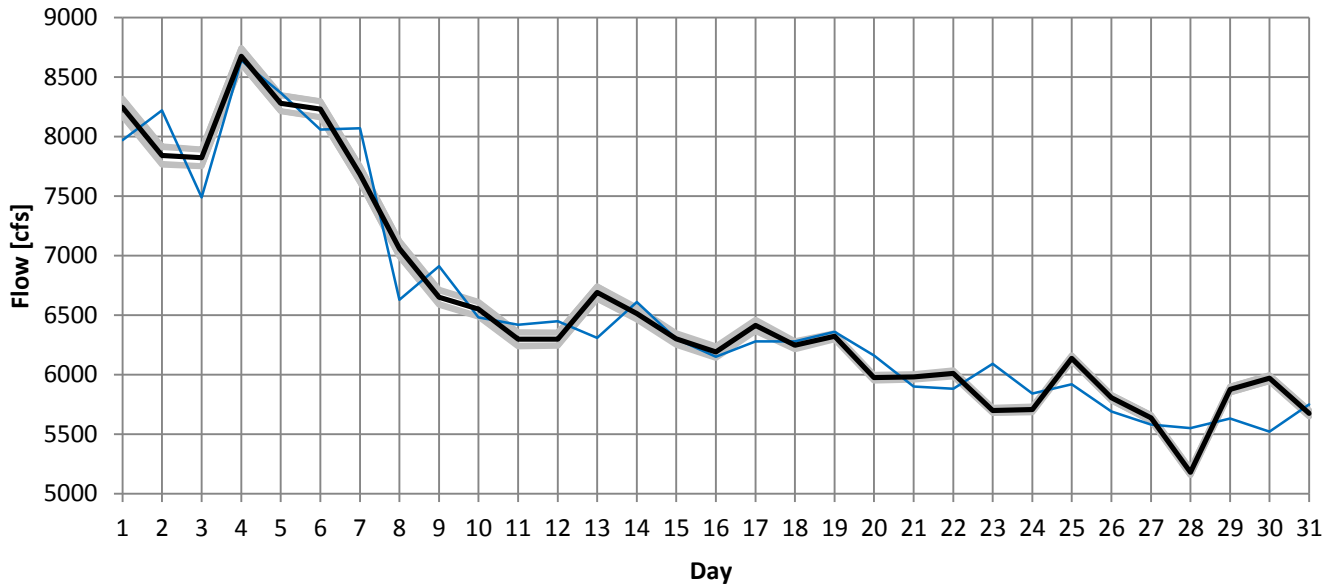
February AADF: Swan Falls 1-hour lag Sensitivity



March: Swan Falls Headwater

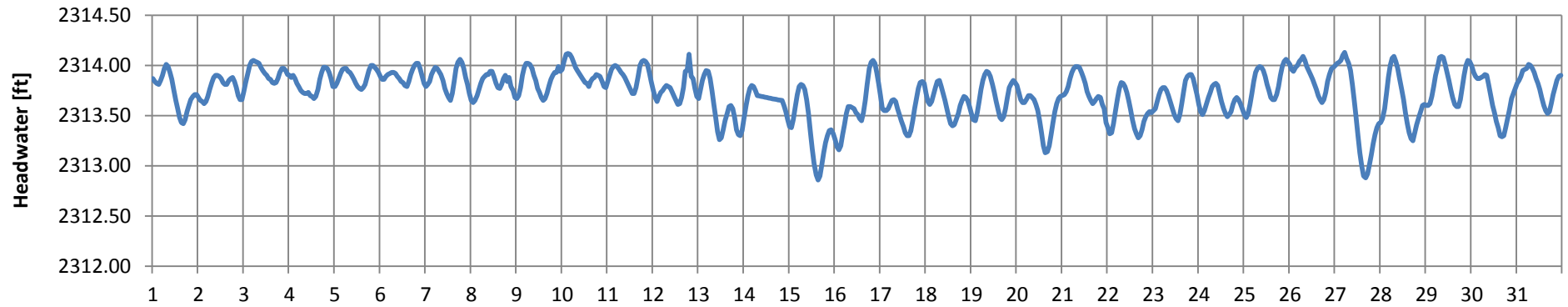


March AADF: Swan Falls 1-hour lag Sensitivity

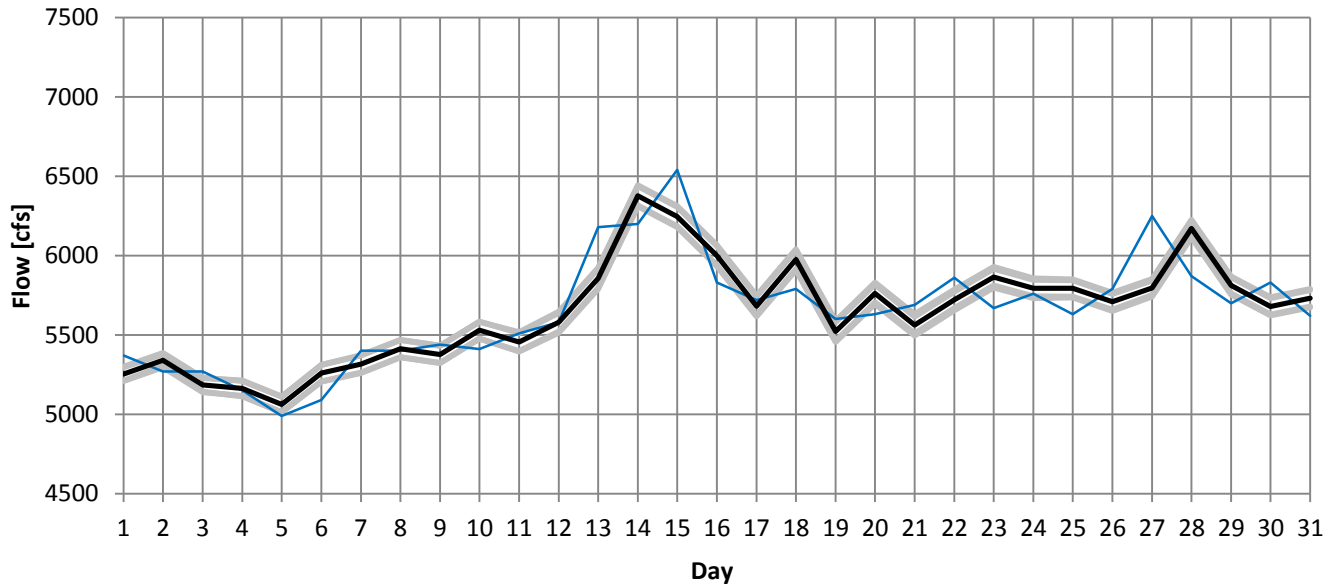


— 95% Confidence Interval — 95% Confidence Interval — 95% Confidence Interval
— 95% Confidence Interval — UADF — AADF

July

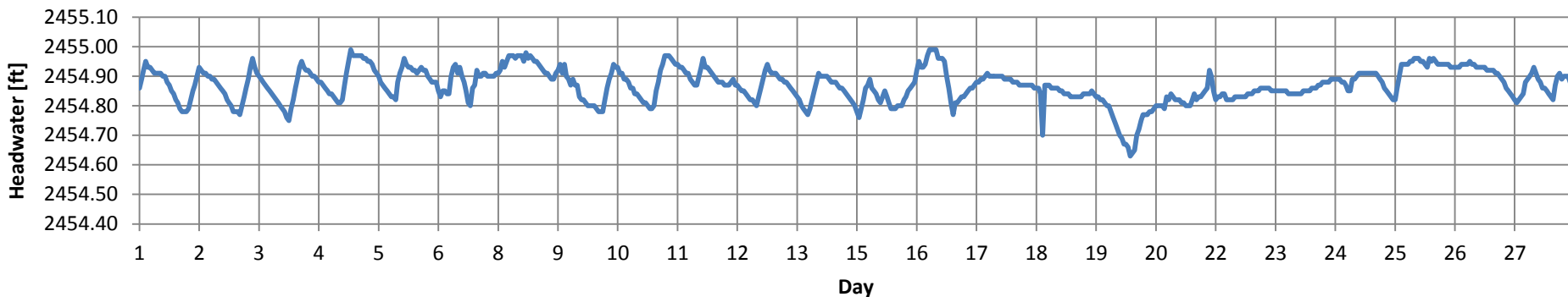


July AADF: Swan Falls 1-hour lag Sensitivity

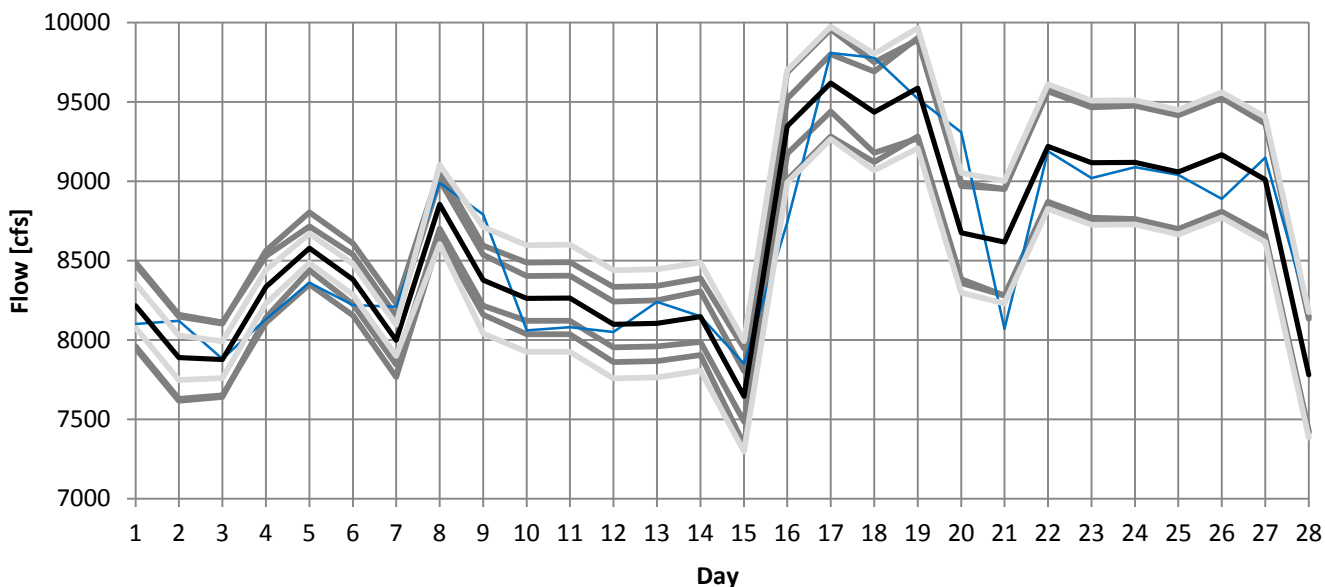


— 95% Confidence Interval — 95% Confidence Interval — 95% Confidence Interval
— 95% Confidence Interval — UADF — AADF

February

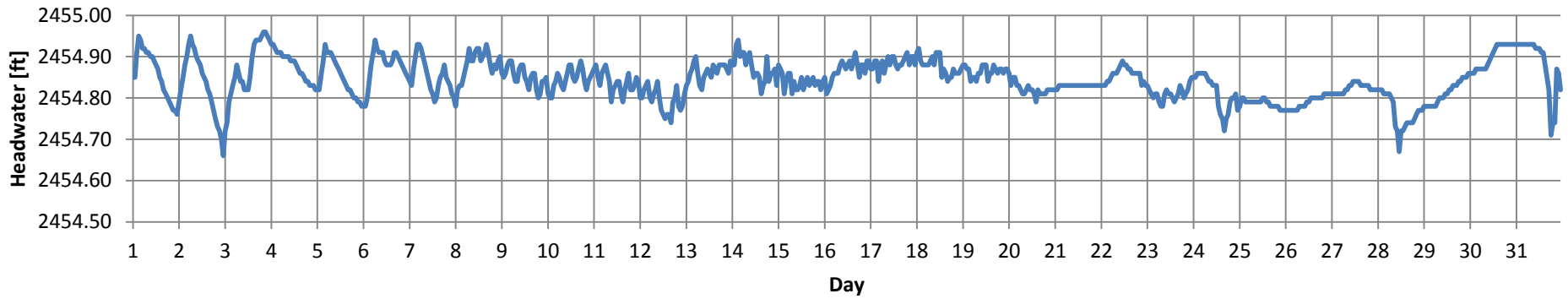


February AADF: CJ Strike 1-hour and 2-hour lag Sensitivity

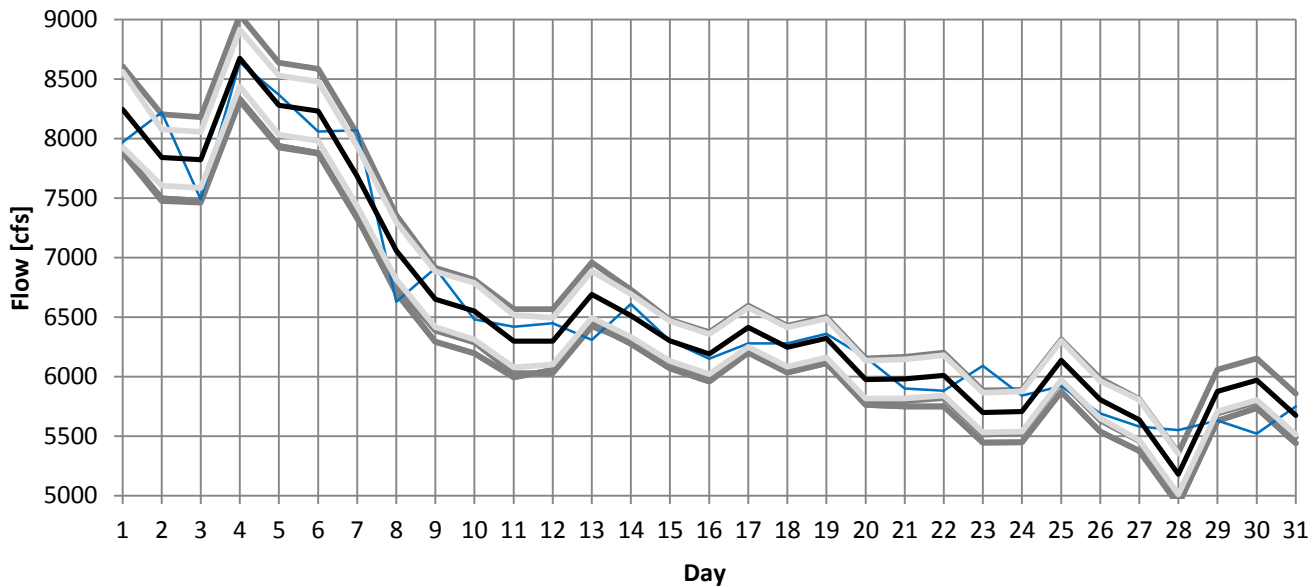


- 95% Confidence (2-hour)
- 95% Confidence (2-hour)
- UADF
- 95% confidence (1-hour)
- 95% Confidence (2-hour)
- 95% Confidence (2-hour)
- AADF
- 95% Confidence (1-hour)

March: CJ Strike Headwater



March AADF: CJ Strike 1-hour and 2-hour lag Sensitivity



- Series1
- Series2
- Series5
- Series6
- UADF
- AADF
- Series7
- Series8

Estimated Lags for the AADF Calculation

- 1) Swan Falls—2 hrs
- 2) CJ Strike—10 hrs
- 3) Bliss—33 hrs
- 4) Lower Salmon Falls—35 hrs

95% Confidence Interval (2 Standard Deviations)

[cfs]	Swan Falls	CJ Strike	Bliss	LSF
1-hour lag	57	157	7	21
2-hour lag	--	239	11	33