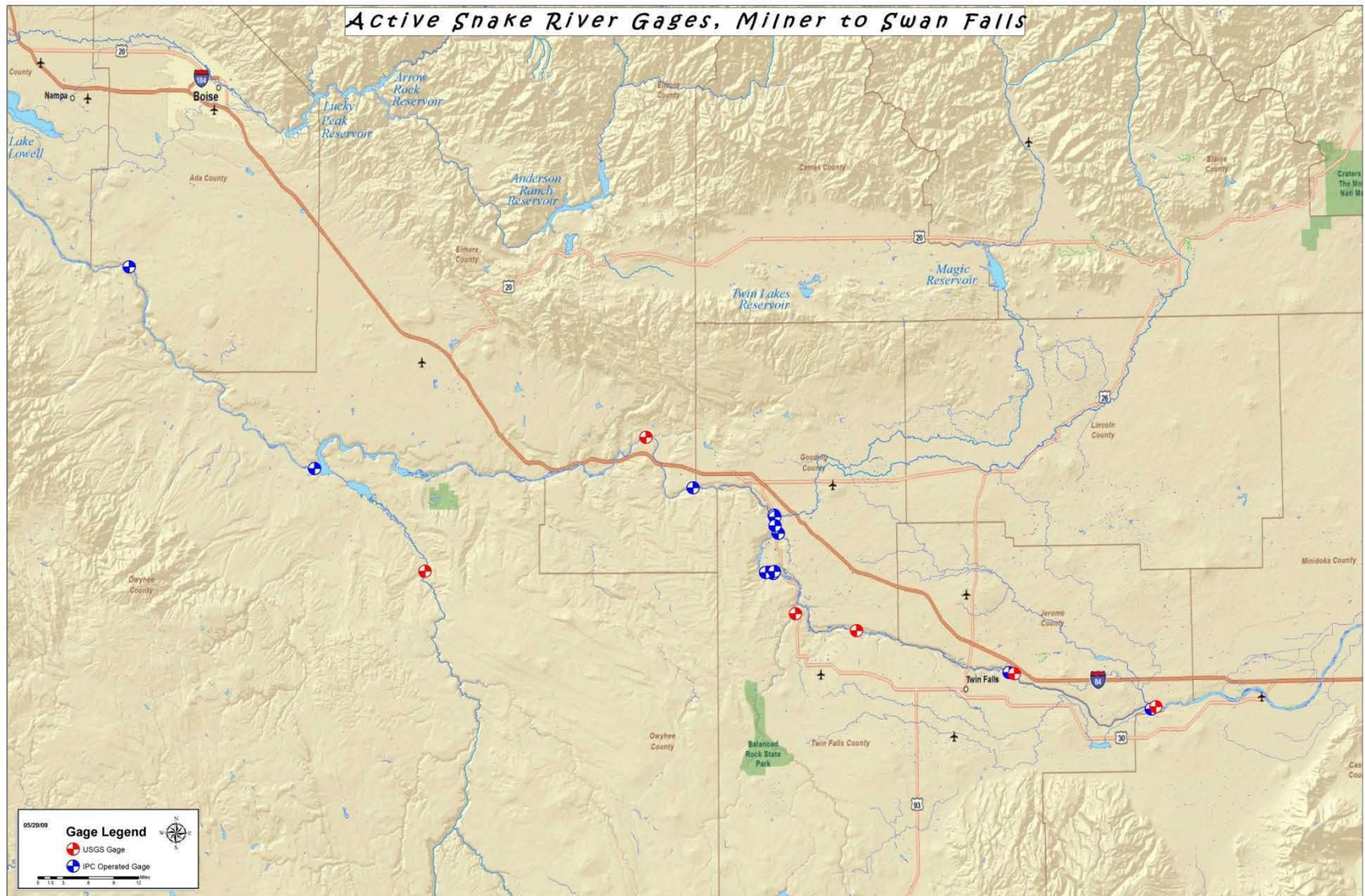


# Gages Milner to Swan Falls

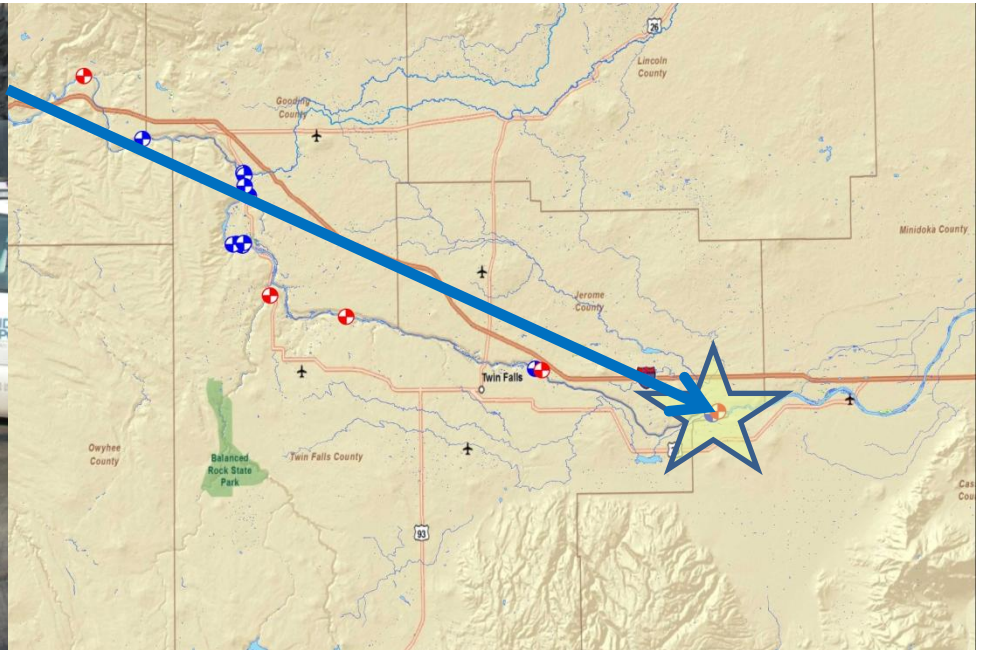




# Lower Milner Power Plant



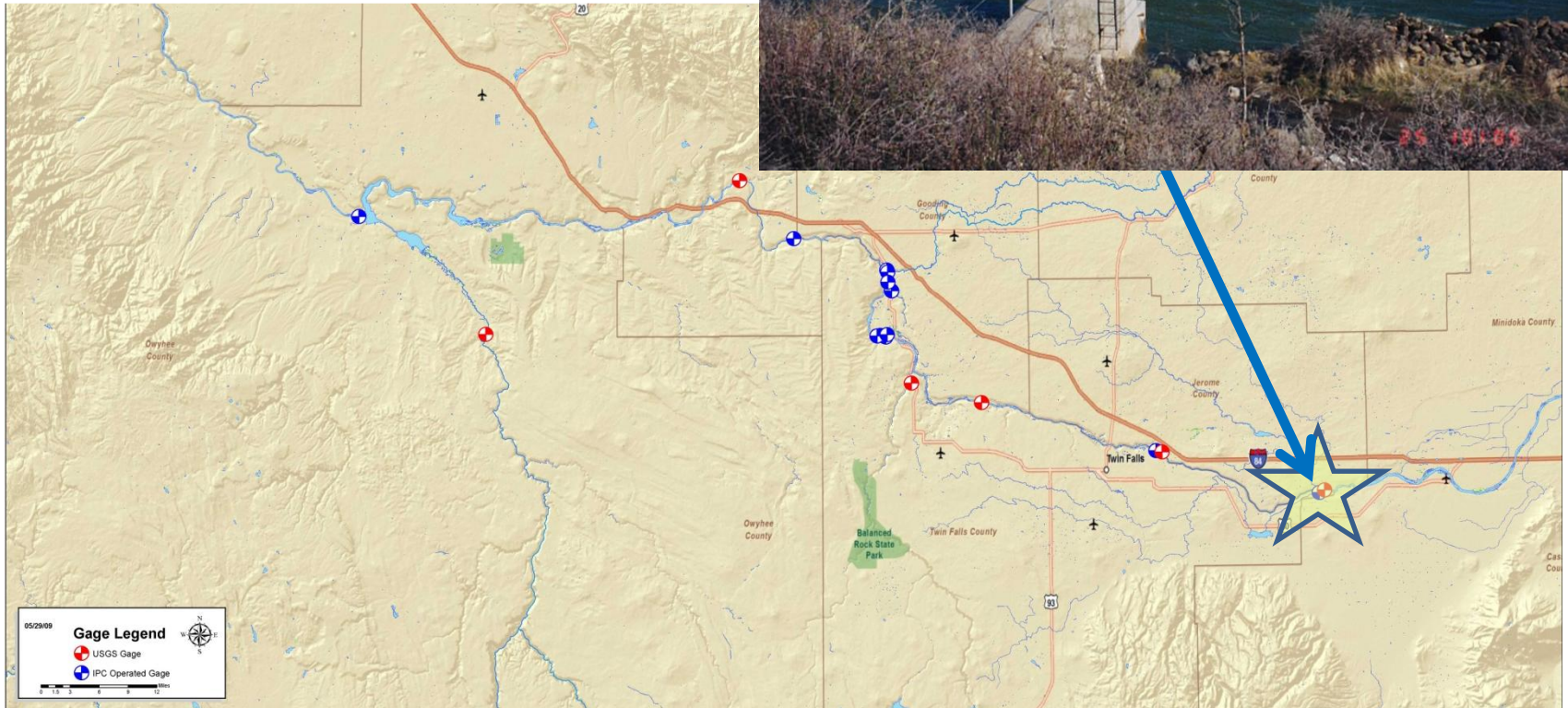
- Station ID 13087505
- Established by USGS, 1992
- IPC maintained 2001
- Accusonic flow monitoring instrumentation
- Discharge measurement using Acoustic Doppler Flow Meter (ADFM)





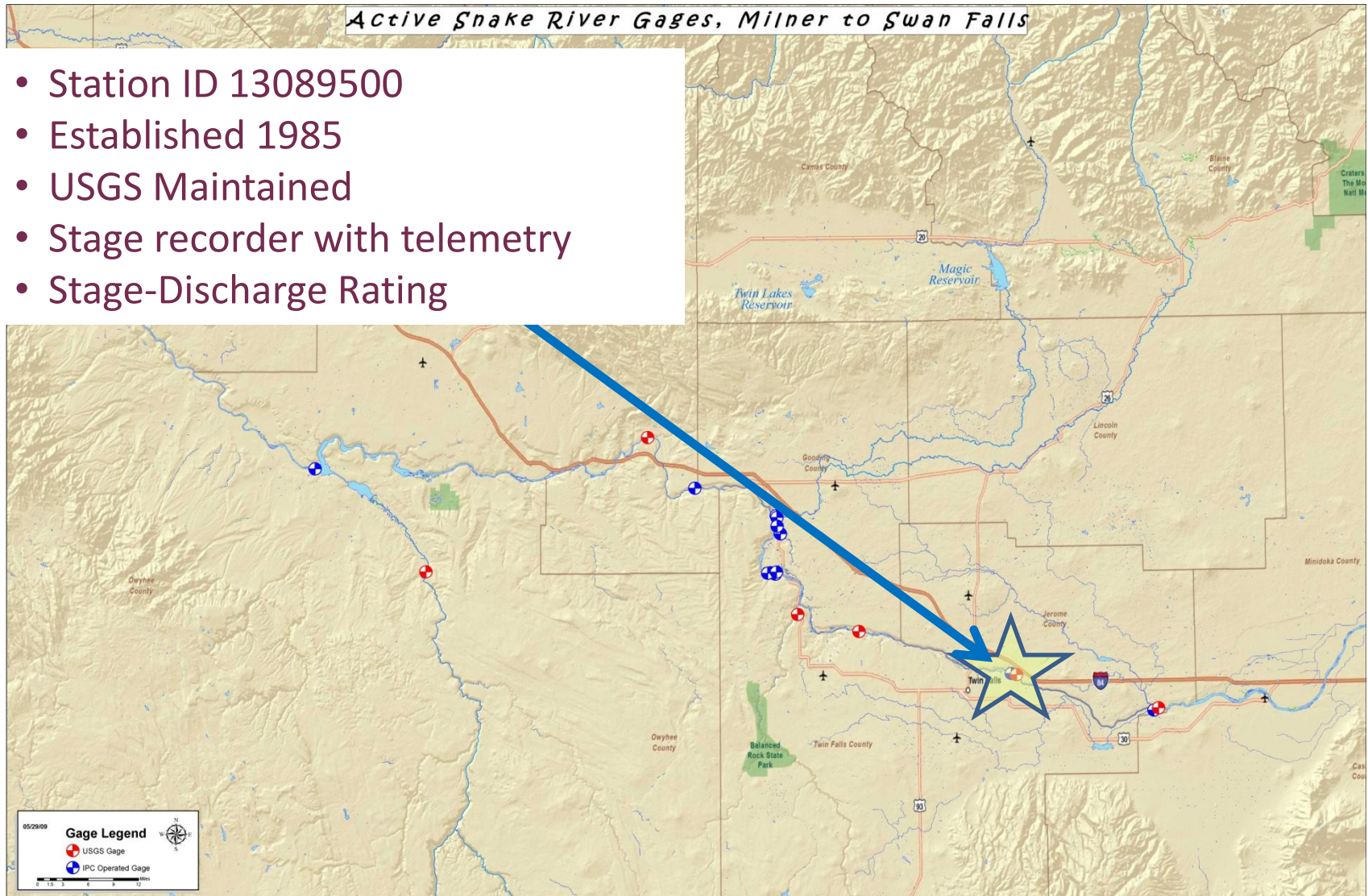
# Snake River Gaging Station at Milner

- Station ID 13087995
- Established 1992
- USGS maintained
- Stage recorder with telemetry
- Stage-discharge rating





# Devils Washbowl Spring nr Kimberly

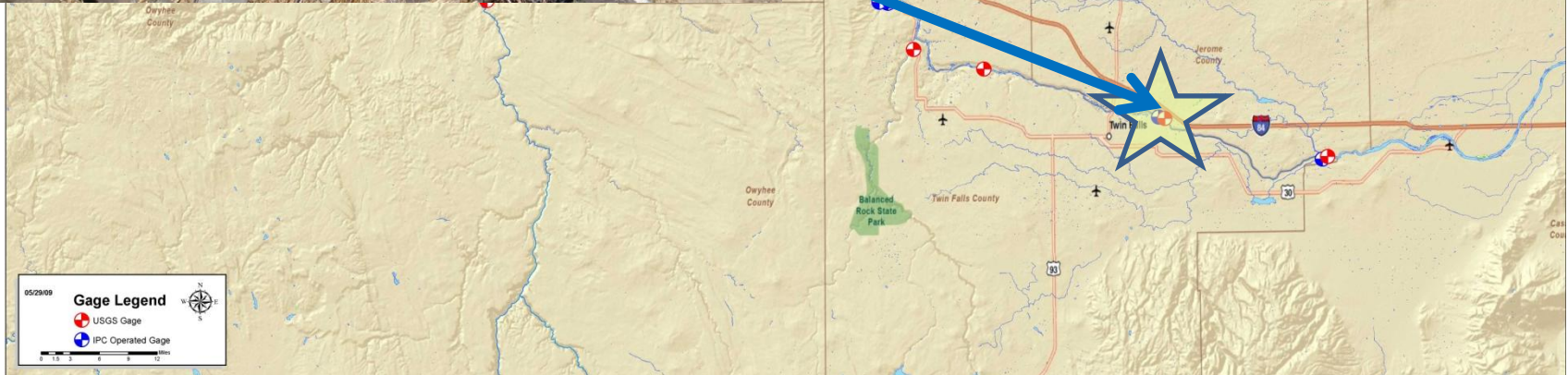




# Snake River nr Kimberly



- Station ID 13090000
- USGS Established 1923
- IPC Maintained since 2001
- Stage recorder with telemetry
- Stage-discharge rating





# Snake River nr Buhl

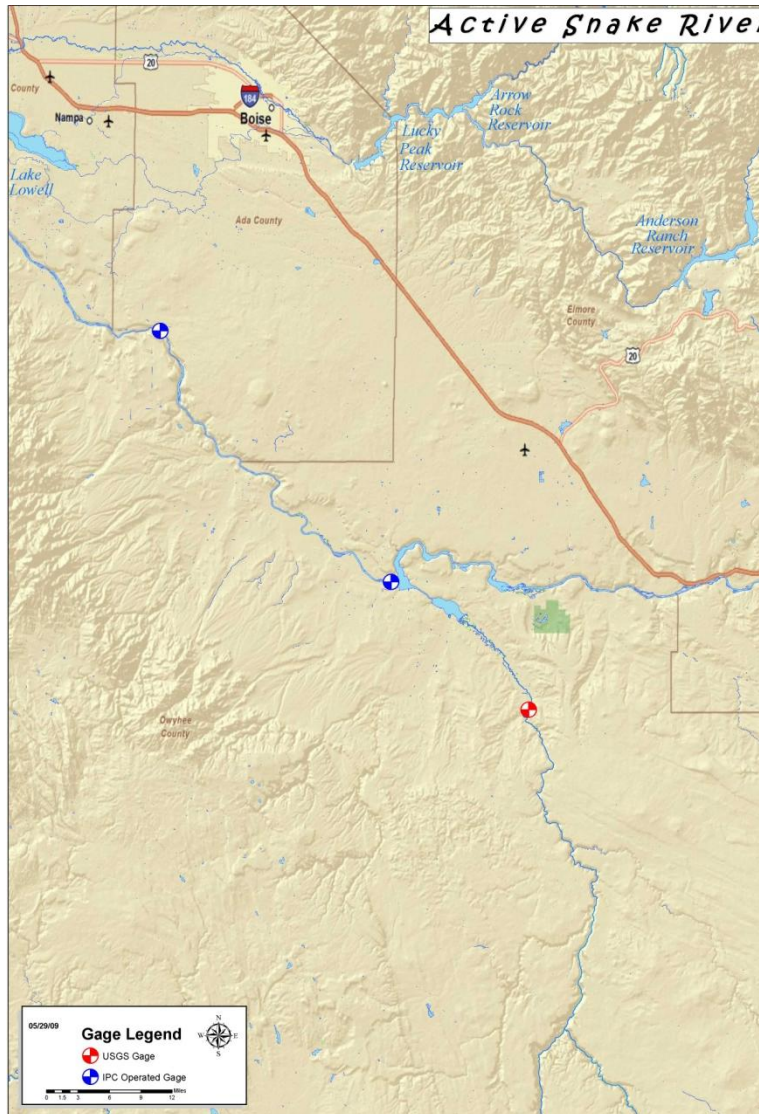


- Station ID 13094000
- USGS Maintained 1946
- Stage Recorder with telemetry
- Stage-Discharge Rating

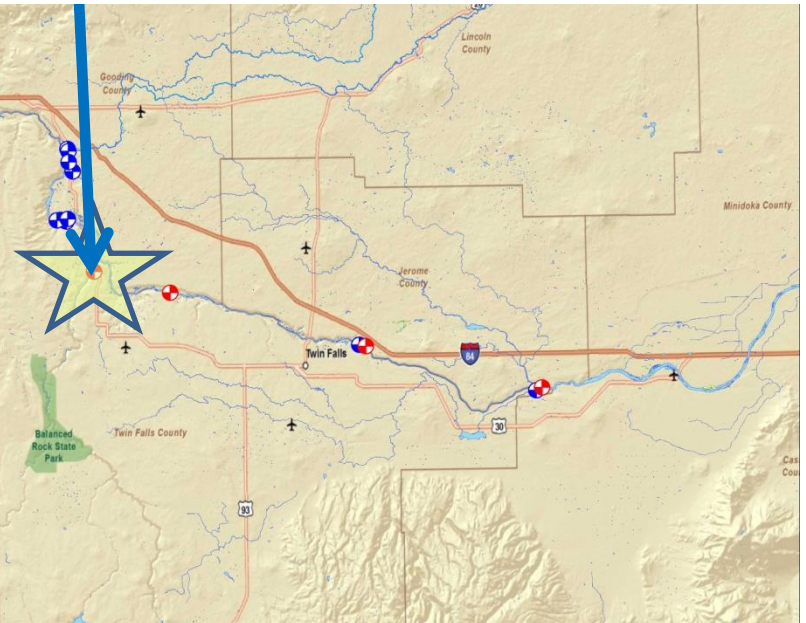




# Salmon Falls Creek



- Station ID 13108150
- USGS Maintained
- Established April 1970
- Stage recorder with telemetry
- Stage-discharge rating

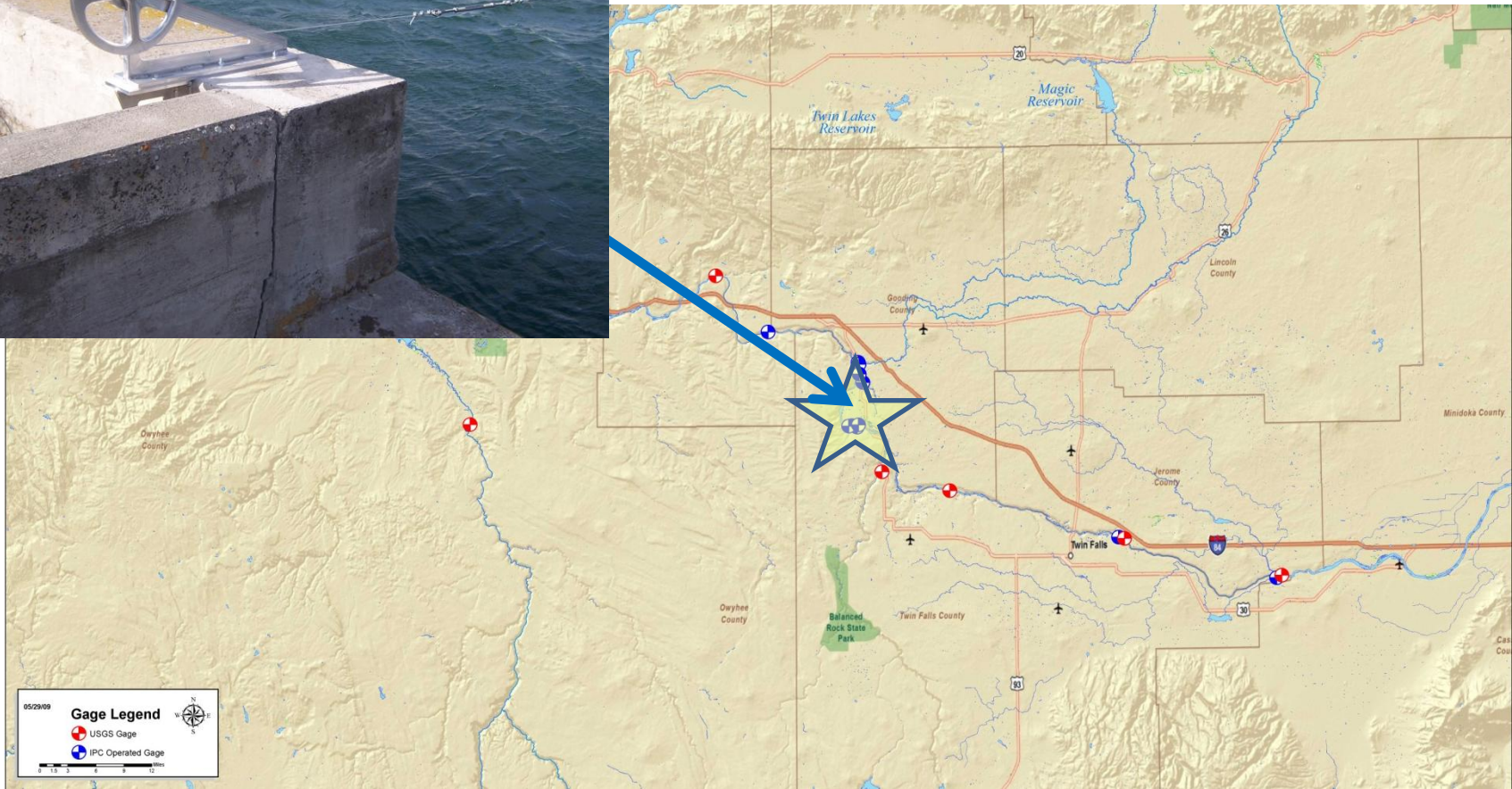




# Upper Salmon B Power Canal

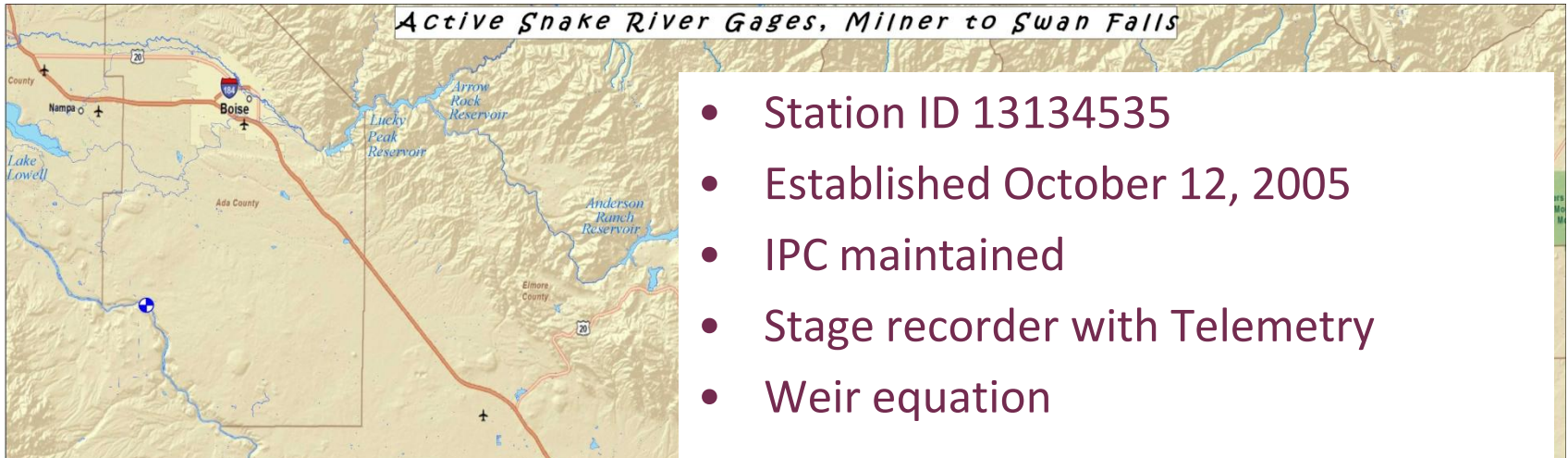


- Station ID 13134520
- Established in February 1998
- IPC Maintained
- ADVM with Stage recorder and telemetry





# Dolman Rapids Weir

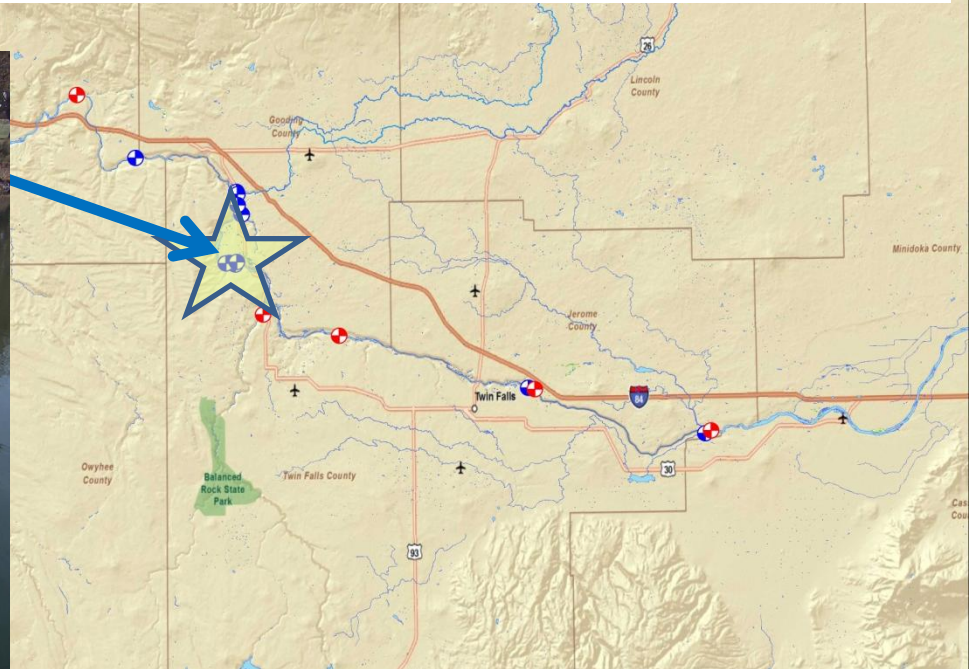




# Upper Salmon A Power Canal

*Active Snake River Gages, Milner to Swan Falls*

- Station ID 13134550
- Established in September 1998
- IPC Maintained
- ADVM with Stage recorder and communication
- Velocity index with stage-area rating

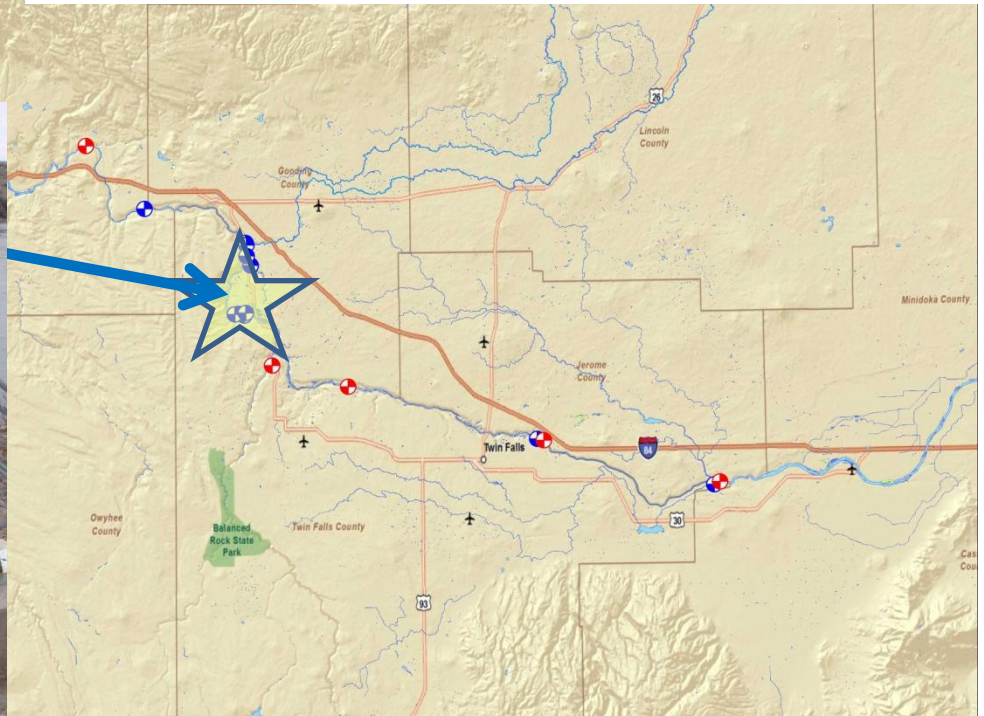




# North Channel Snake at Upper Salmon Falls



- Station ID 13134556
- Established 1991 by USGS
- IPC maintained since January 2001
- Stage recorder with telemetry
- Stage-discharge rating curve





# Billingsley Creek near Hagerman



- Station ID 13134750
- Established by IPC November 2004
- IPC maintained for IDWR
- Stage recorder with radio telemetry
- Stage-discharge rating curve

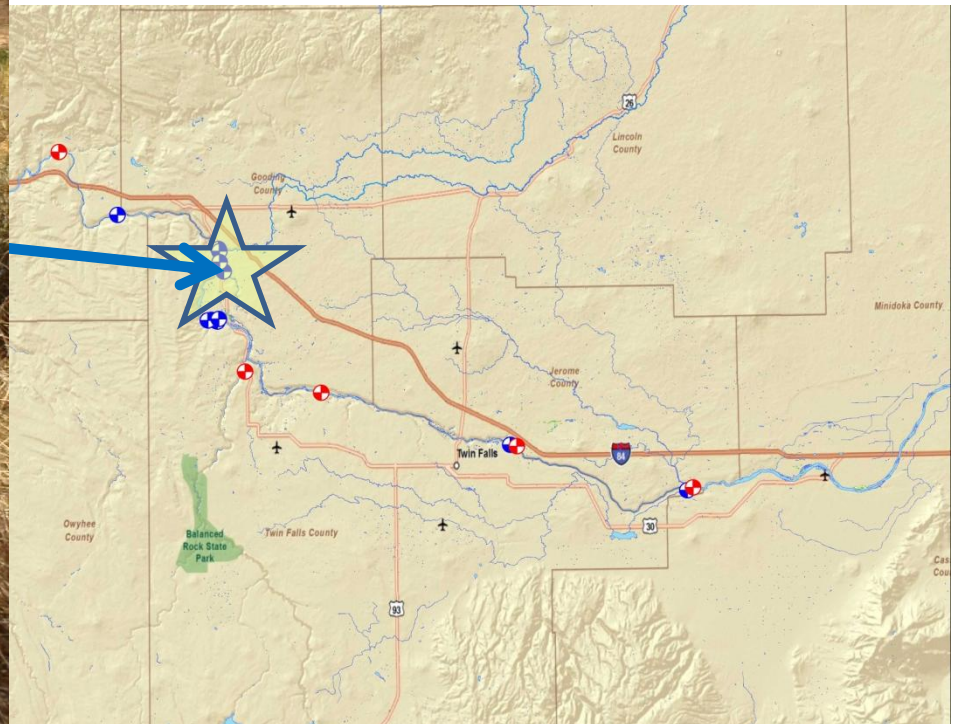




# Snake River below Lower Salmon Falls



- Station ID 13135000
- Established by USGS 1937
- IPC maintained April 2001 to present
- Stage recorder with telemetry
- Stage-discharge rating curve

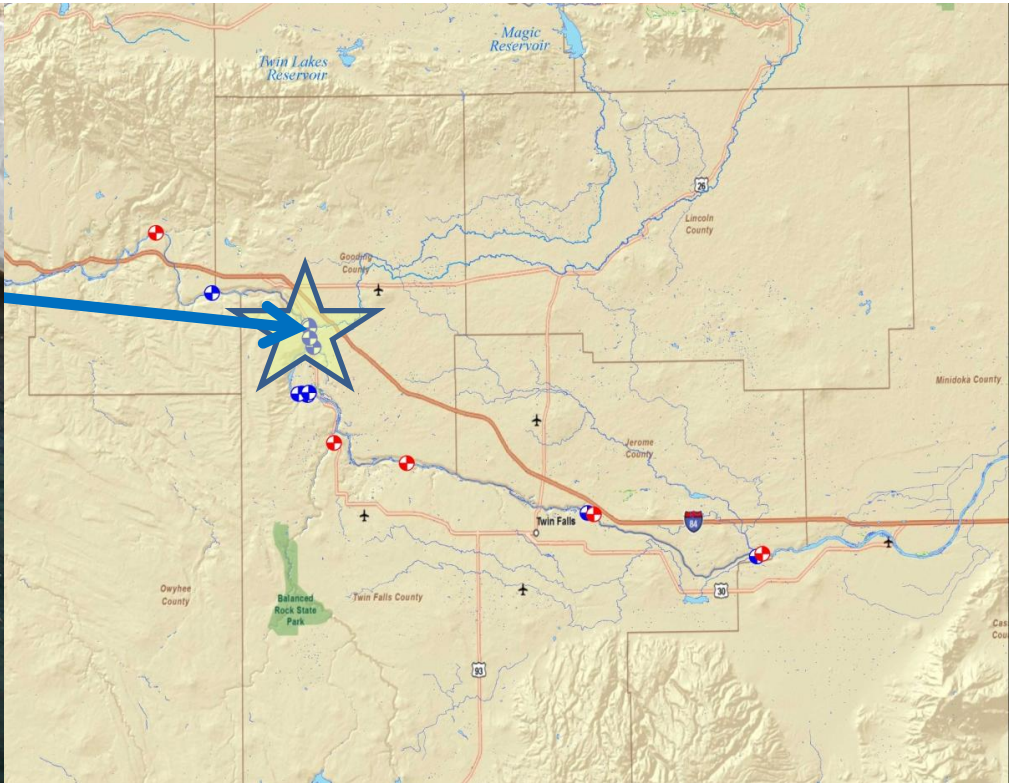




# Lower Malad Power Canal



- Station ID 13152950
- Established 1999
- IPC maintained
- ADVN with Stage recorder and telemetry
- Velocity index with stage-area rating

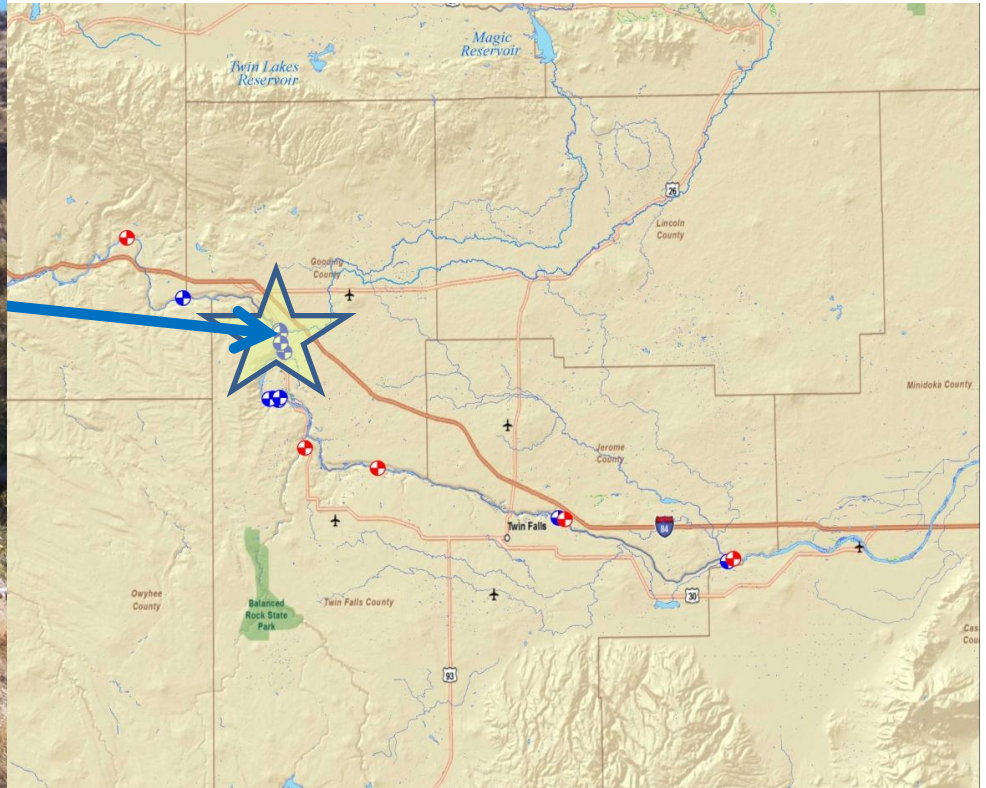




# Malad River near Bliss



- Station ID 13153500
- Established by USGS December 1984
- IPC maintained October 2000 to present
- Stage recorder with telemetry
- Stage-discharge rating

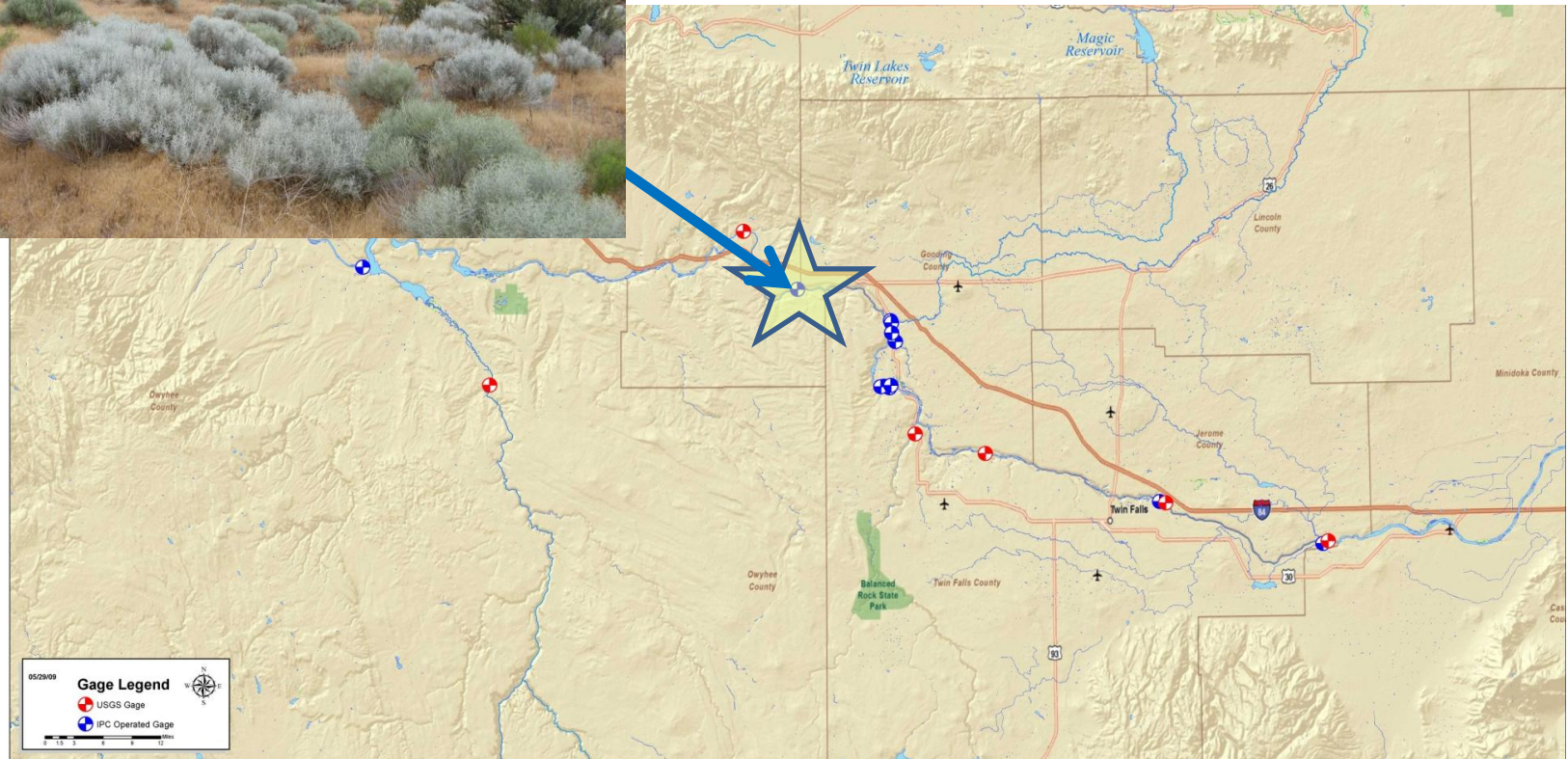




# Snake River blw Bliss

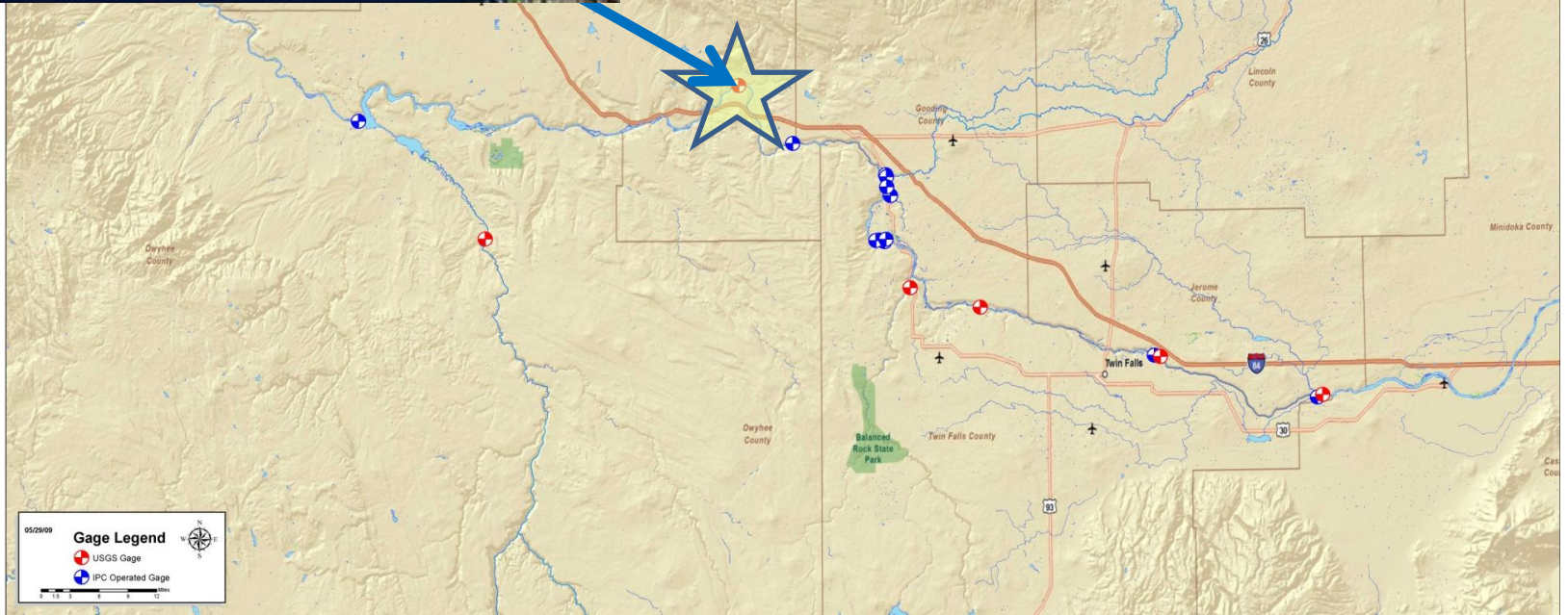


- Snake River below Bliss 13153776
- Established by USGS 1991
- IPC maintained 2001 to present
- Stage recorder with telemetry
- Stage-discharge rating





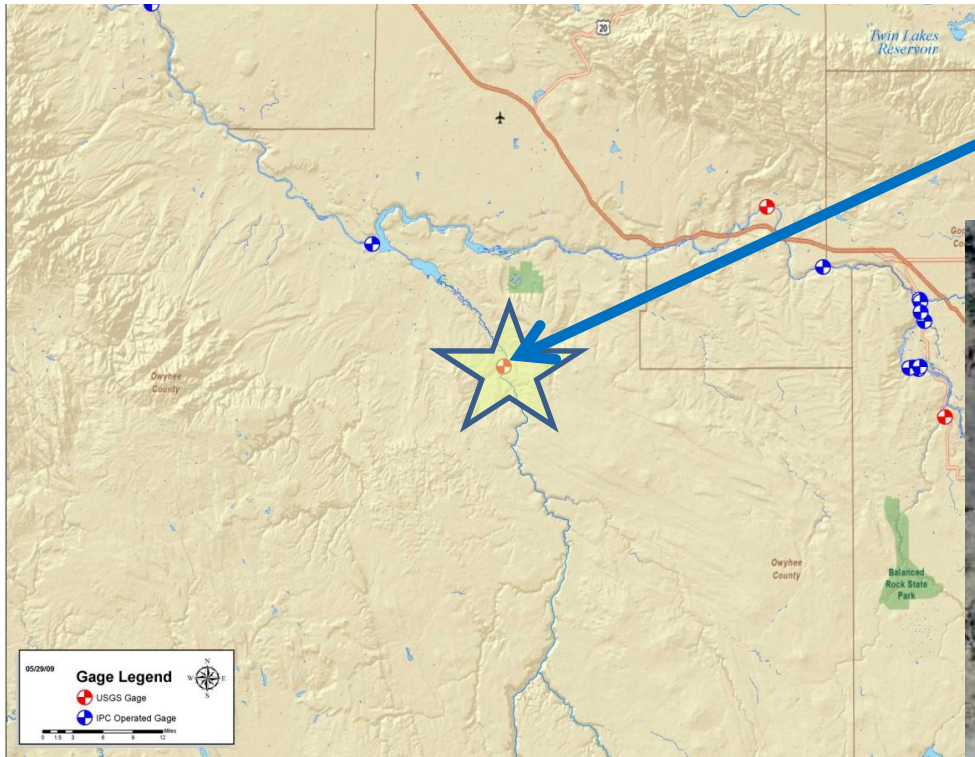
- 





# Bruneau River nr Hot Springs

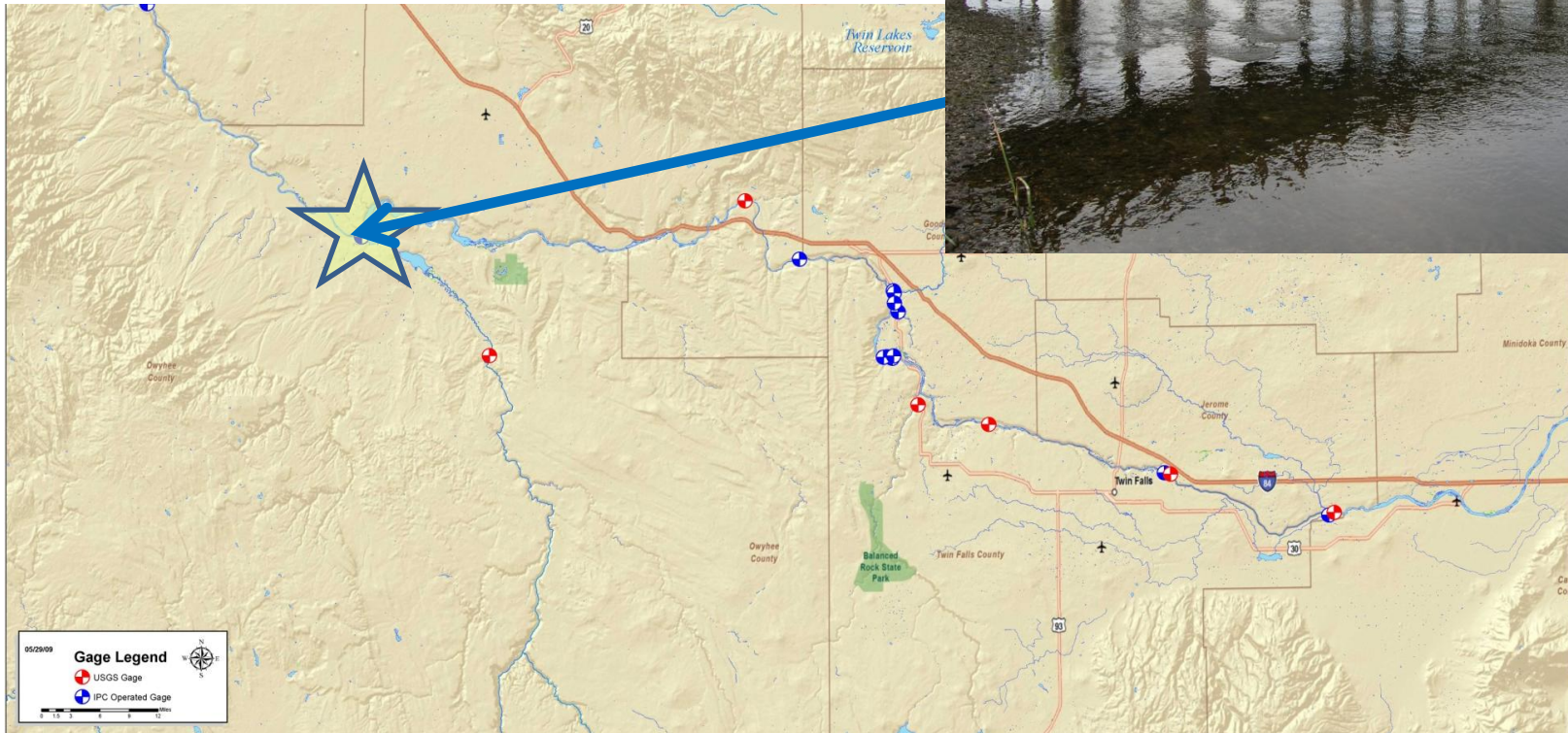
- Station ID 13168500
- Established October 1943
- USGS Maintained
- Stage recorder with telemetry
- Stage-discharge rating





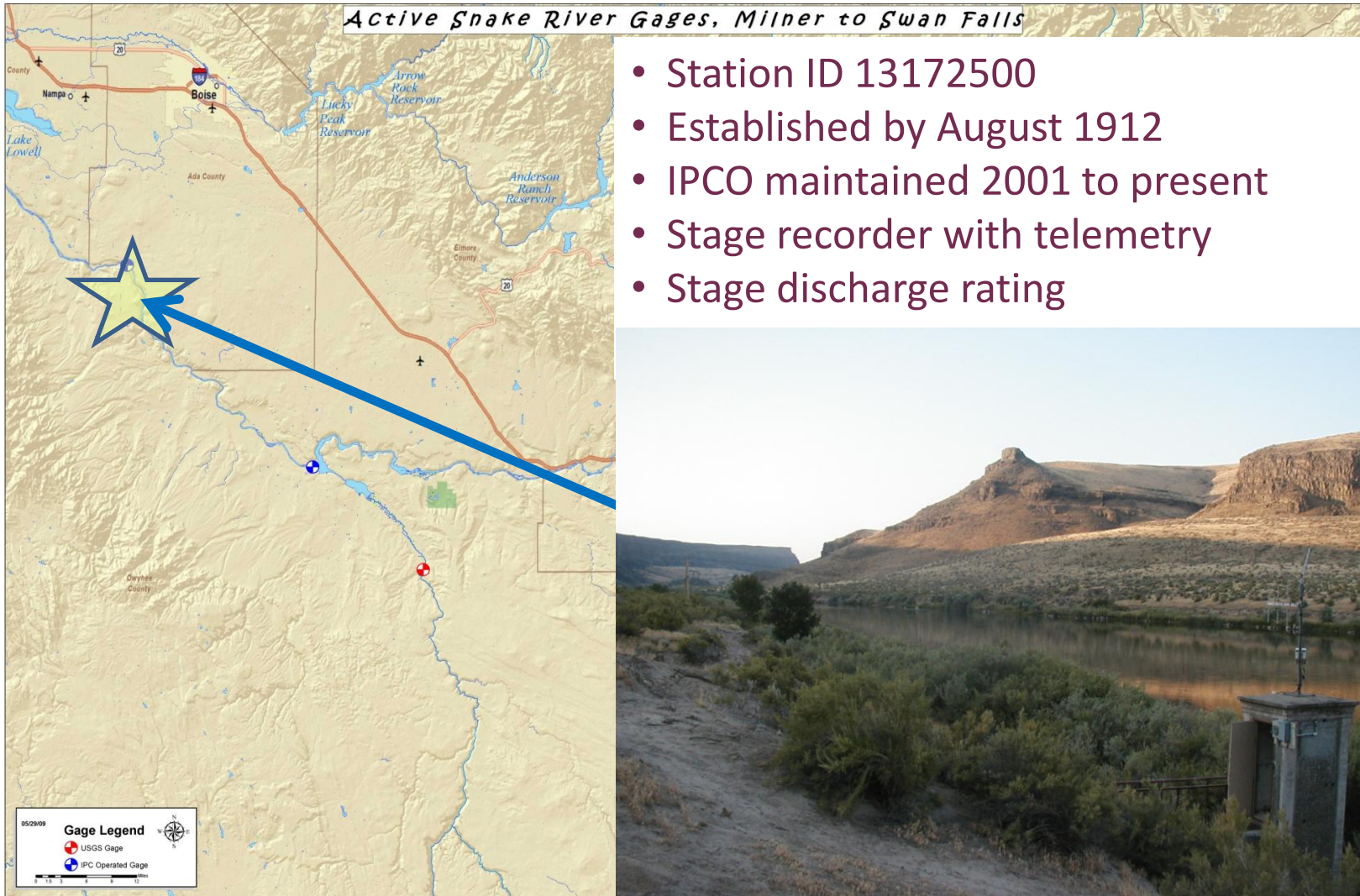
# Snake River below CJ Strike

- Station ID 13171620
- Established by USGS April 1985
- IPC Maintained 2001 to present
- ADVN with Stage recorder and telemetry
- Velocity index with stage-area rating





# Snake River near Murphy



- Station ID 13172500
- Established by August 1912
- IPCO maintained 2001 to present
- Stage recorder with telemetry
- Stage discharge rating

