



State of Idaho

DEPARTMENT OF WATER RESOURCES

322 East Front Street • P.O. Box 83720 • Boise, Idaho 83720-0098

Phone: (208) 287-4800 • Fax: (208) 287-6700 • Website: www.idwr.idaho.gov

C.L. "BUTCH" OTTER
Governor

GARY SPACKMAN
Director

April 10, 2018

RE: Preliminary Order Expanding Water District 170 and Modifying and Combining Water Districts within Administrative Basin 74

Dear Water Right Holder,

Enclosed please find a copy of the Preliminary Order regarding the above referenced matter. This Preliminary Order accomplishes the following actions:

- Combines Water Districts 74, 74K, 74U, and 74Y into Water District 74;
- Modifies Water Districts 74, 74A, 74B, 74C, 74F, 74G, 74J, 74M, 74Q, 74W, and 74Z to include all surface and ground water rights within their respective boundaries with the exception of stockwater and domestic water rights described below;
- Expands the boundaries of Water District No. 170 to include all surface and ground water rights in Basin 74, with the exception of stockwater and domestic water rights described below; and
- Designates Water Districts 74, 74A, 74B, 74C, 74F, 74G, 74J, 74M, 74Q, 74W, and 74Z as subdistricts within Water District No. 170.

These actions under the Preliminary Order do not include ground water or surface water rights used for stockwater and domestic purposes as defined by Idaho Code §§ 42-111 and 42-1401A(11), and rights used for in-stream watering of livestock as defined by Idaho Code § 42-113.

The records of the Idaho Department of Water Resources (Department or IDWR) show that you own or have an interest in one or more water rights within the above referenced water districts. Also enclosed is an informational sheet that explains options for responding to preliminary orders. Please note that any party subject to the order may file a petition for reconsideration within fourteen (14) days of the service date of the order, which is the date of this letter. The Department will act upon petitions within twenty-one (21) days of their receipt.

Please contact this office, the IDWR regional office in Idaho Falls (208-525-7161), or the IDWR Salmon Field Office (208-742-0658) if you have any questions concerning the attached order.

Sincerely,

Tim Luke
Water Compliance Bureau

Encl: *Preliminary Order Expanding, Modifying and Combining Water Districts
Explanatory Information to Accompany a Preliminary Order*

cc: IDWR Eastern Region, Idaho Falls
Cindy Yenter, IDWR Salmon Field Office

**BEFORE THE DEPARTMENT OF WATER RESOURCES
OF THE STATE OF IDAHO**

IN THE MATTER OF THE PROPOSED)	
EXPANSION OF WATER DISTRICT 170,)	
THE PROPOSED MODIFICATION OF)	
ALL WATER DISTRICTS WITHIN)	
ADMINISTRATIVE BASIN 74 TO)	
INCLUDE GROUND WATER)	PRELIMINARY ORDER EXPANDING,
DIVERSIONS AND THE PROPOSED)	MODIFYING AND COMBINING
COMBINATION OF WATER)	WATER DISTRICTS
<u>DISTRICTS 74, 74K, 74U AND 74Y)</u>	

PROCEDURAL HISTORY

On November 9, 2017, the Idaho Department of Water Resources (“Department” or “IDWR”) sent a letter to all owners of record for water rights within Water District 170 and Administrative Basin 74 (“Basin 74”), except for domestic and stockwater uses, as defined in Idaho Code §§ 42-111 and 42-1401(11), and instream stockwater uses, as defined in Idaho Code § 42-113. The letter notified the recipients of a public meeting to discuss certain changes proposed for Water District 170 and water districts within Basin 74. The Department conducted the public meeting on November 28, 2017, in Salmon, Idaho, and presented information about the proposed water district changes.

On January 17, 2018, the Department issued a Notice of Public Hearing describing specific changes proposed for Water District 170 and all water districts within Basin 74. The notice was sent to all current owners of record for water rights administered by Water District 170 and water rights within Basin 74, except for domestic and stockwater uses, as defined in Idaho Code §§ 42-111 and 42-1401(11), and instream stockwater uses, as defined in Idaho Code § 42-113.

The Department conducted the public hearing on February 1, 2018, at the Lemhi County Annex in Salmon, Idaho. Cindy Yenter, an employee of the Department and the current watermaster for Water District 170, presented information about the proposed changes. Participants were encouraged to offer testimony regarding the proposal. Carl Ellsworth, Merrill Beyeler and James Whittaker offered testimony at the hearing. In addition, water users were encouraged to provide written comments to the Department on or before February 12, 2018. Written comments were provided by James Whittaker and the Upper Salmon Basin Watershed Advisory Committee, and a *Statement of Public Witnesses* was provided by 82 water users in Basin 74. After carefully considering all of the evidence in the administrative record, the Department finds, concludes and orders as follows:

FINDINGS OF FACT

1. Basin 74 includes the Lemhi River and its tributaries from the headwaters of the Lemhi River to its confluence with the Salmon River. There are currently twelve active water districts in Basin 74: 74 (Lemhi River and some of its tributaries), 74A (Geertsens Creek), 74B (Kirtley Creek), 74C (Bohannon Creek), 74F (Pratt Creek), 74G (Sandy Creek), 74J (Withington Creek), 74M (Agency Creek), 74Q (Mill Creek), 74U (Andrews and Slough Ditch), 74W (Texas, Hawley, Timber, Junction, Bull, Jake and Canyon Creeks) and 74Z (Big Eight Mile and Lee Creeks). There are also some inactive water districts in Basin 74, including 74K (Pattee Creek) and 74Y (Yearian Creek).

2. Water Districts 74K (Pattee Creek) and 74Y (Yearian Creek) are inactive, meaning the districts do not conduct annual meetings or elect a watermaster. There are currently only two active ditches within each of these districts.

3. Historically, the active water districts in Basin 74 have operated as independent districts, each with its own elected watermaster and annual operation budget. Ground water rights in Basin 74 have not been administered by any of the existing water districts in Basin 74.

4. Basin 74 was included in the Snake River Basin Adjudication (“SRBA”). All surface water rights and ground water rights in Basin 74 were required to participate in the SRBA, except for domestic and stockwater uses as defined in Idaho Code §§ 42-111 and 42-1401(11), and instream stockwater uses as defined in Idaho Code § 42-113. A final unified decree was issued by the SRBA Court on August 26, 2014.

5. On April 3, 2012, the presiding judge for the SRBA Court issued a *Partial Decree Pursuant to I.R.C.P. 54(b) for General Provisions in Basin 74* (“Basin 74 General Provisions”).

6. The Basin 74 General Provisions include a provision commonly referred to as the “separate streams provision,” which identifies twenty-seven drainages within Basin 74 and states that water rights from those sources “shall be administered separately from all other water rights in Basin 74 in accordance with the prior appropriation doctrine as established by Idaho law[.]” *Basin 74 General Provisions* at 1. “Future appropriations of water on the above streams are not considered to be subject to prior downstream rights on the Lemhi River proper.” *Id.* at 2. “Future appropriations of water on any other water source or stream in the Lemhi River Basin, however, are considered to be tributary to the Lemhi River for purposes of distribution.” *Id.*

7. The Basin 74 General Provisions also include a provision commonly referred to as the “high flow provision,” which states:

The following general provision shall govern the use of “High Flow” surface water for irrigation within the Lemhi Basin:

The practice of diverting high flows in the Lemhi Basin, in addition to diverting decreed and future water rights that may be established pursuant to statutory procedures of the State of Idaho, is allowed provided:

- (a) the waters so diverted are applied to beneficial use.
- (b) existing decreed rights and future appropriations of water are first satisfied.

Id. at 2.

8. On April 6, 2006, the Director of the Department issued an *Amended Final Order Creating Water District No. 170* (“2006 Order”). Pursuant to the 2006 Order, Water District 170 included all surface water and ground water rights in Administrative Basins 71 and 72, other than domestic and stockwater rights as defined by Idaho Code §§ 42-111 and 42-1401A(11).

9. Finding of Fact No. 10 in the 2006 Order states, in pertinent part:

The Director’s [hearing] notice also included a description of the Director’s proposal to expand the Upper Salmon Water District by 2007 to encompass all of Basins 73, 74, and 75, after the water rights in those basins have been decreed by the [SRBA] District Court

10. On December 10, 2012, the Department issued a Preliminary Order, expanding Water District 170 to include Administrative Basin 73 (Pahsimeroi River) and designating Water District 73 as a subdistrict of Water District 170. Water District 73 was also modified to include the administration of certain ground water rights within the district.

11. On August 20, 2004, a *Stipulation and Joint Motion for Order Approving Stipulation and Entry of Partial Decrees* (“W&S Stipulation”) was filed with the SRBA Court, resolving objections to Wild & Scenic River claims filed by the United States for water rights in the Salmon River drainage.¹

12. Attorney General Lawrence Wasden signed the W&S Stipulation on behalf of the State of Idaho (including the Idaho Water Resources Board). *W&S Stipulation* at 21. The W&S Stipulation was also signed by a representative of the United States Department of Justice and by other objectors to the contested SRBA claims. *Id.* at 20-27. The effective date of the W&S Stipulation is September 1, 2003. *Id.* at 18.

13. The following provisions of the W&S Stipulation are relevant to the water district changes proposed by the Department:

Enforcement. The State, through [IDWR] and local water districts created and supervised by IDWR pursuant to Idaho Code §§ 42-604 et seq., shall distribute water to the federal reserved water rights set forth in this Stipulation and the Partial Decrees and all other hydraulically connected water rights, regardless of subbasin location, above the ending point of the respective federal reserved water rights in accordance with priority dates, quantities and all other elements of the rights as provided in this Stipulation and the Partial Decrees, and applicable law at all times when there is a hydraulic connection between the federal reserved water right and the right to be regulated. While this paragraph does not affect the present

¹ On November 16, 2004, the SRBA Court issued an *Order Approving Stipulation and Entry of Partial Decrees*.

administration of existing water rights from tributary sources that are administered separately, all new water rights that are hydraulically connected with the Wild and Scenic Rivers federal reserved water right will be administered as a single source.

W&S Stipulation at par. 2(a), p. 3.

Creation of Water Districts.

(1) IDWR will establish water districts as necessary to assist IDWR in the administration of water rights. The parties agree that, regardless of whether a water district has been established for an area, IDWR will:

- A) collect and record diversion data;
- B) enforce the water rights in priority; and
- C) curtail unauthorized or excessive diversions as necessary.

Id. at par. 2(b)(1), p. 3.

Within six months of the filing of Director's Reports for administrative basins 73, 74 and 75, the parties will file a joint petition with the SRBA Court, pursuant to Idaho Code § 42-1417, for an order for interim administration of those basins and IDWR will incorporate those basins into the [Upper Salmon Water District "USWD," a.k.a. Water District 170]. Existing water districts within the basins will be converted to subdistricts within the USWD as appropriate to facilitate management. Other subdistricts will be formed as deemed necessary to accomplish the purposes of the USWD. Creation of the USWD shall involve full participation by water users in the area in accordance with state law, and the existing water districts will have an important role. The resulting organization will be fully under the supervision of IDWR.

Id. at par. 2(b)(2), p. 4.

Prevention of Unauthorized Uses. IDWR and the watermaster will utilize all appropriate techniques, including but not limited to remote-sensing, field observation and inventory, coordination with local water users and citizens, and input from other agencies, to identify unauthorized uses of water. IDWR and/or the watermaster will curtail identified unauthorized uses of water based on the authorities of Chapter 6, Title 42, Idaho Code, and IDWR will pursue appropriate civil enforcement action as provided in Idaho Code §§ 42-351 and 42-1701B.

Id. at par. 2(b)(3)(d), p. 5.

Administration of Existing Water Rights. IDWR and the watermaster shall conduct a systematic inventory of diversions, giving priority to those diversions that have the greatest potential influence on other water rights. IDWR will evaluate the staffing requirement for operation of the water district and will identify needs for subdistricts and deputy watermasters as required. IDWR and the watermaster

will specifically identify and curtail unauthorized uses. . . . IDWR will require installation of lockable controlling works and measurement devices for any existing diversion if it is determined that the water right holder is refusing or failing to comply with IDWR's or the watermaster's instructions and will pursue appropriate civil enforcement action as provided in Idaho Code §§ 42-351 and 42-1701B.

Id. at par. 2(b)(3)(e), pp. 5-6.

Remedies. In the event the State fails to administer water rights in accordance with the terms of this Stipulation, the Partial Decrees and applicable law, any party to this Stipulation, upon a satisfactory showing to the SRBA Court, or any successor state court with jurisdiction to enforce the final decree issued by the SRBA Court, of such failure to administer, shall be entitled to an order under the Court's continuing jurisdiction, as described in paragraph 5, compelling the State to properly administer the water rights.

Id. at par. 2(b)(3)(i), p. 7.

14. In the January 17, 2018 Notice of Public Hearing, the Department proposed the following changes:

- 1) Expand the boundaries of Water District 170 to include all surface and ground water rights in Basin 74, except for stockwater and domestic water rights as defined by Idaho Code §§ 42-111 and 42-1401A(11), and rights used for in-stream watering of livestock as defined by Idaho Code § 42-113. Existing water districts in Basin 74 will become subdistricts of Water District 170.
- 2) Combine Water Districts 74 (Lemhi River), 74K (Pattee Creek), 74U (Andrews and Slough Ditch) and 74Y (Yearian Creek) into a single water district, 74 (Lemhi River).
- 3) Expand the scope of Water Districts 74 (Lemhi River), 74A (Geertsen Creek), 74B (Kirtley Creek), 74C (Bohannon Creek), 74F (Pratt Creek), 74G (Sandy Creek), 74J (Withington Creek), 74M (Agency Creek), 74Q (Mill Creek), 74W (Texas, Hawley, Timber, Junction, Bull, Jake and Canyon Creeks) and 74Z (Big Eight Mile and Lee Creeks) to include all ground water rights within their respective boundaries, except for stockwater and domestic water rights as defined by Idaho Code §§ 42-111 and 42-1401A(11).

RELEVANT LEGAL PROVISIONS

Idaho law declares that all surface water, when in natural channels or springs or lakes, and all ground water within the State of Idaho are “the property of the state, whose duty it shall be to supervise” the “appropriation and allotment” of the water “to those diverting the same therefrom for any beneficial purpose[.]” Idaho Code §§ 42-101, 42-226.

The Director, acting on behalf of the State of Idaho, is authorized to control the appropriation and use of all surface and ground waters within the state. *See* Idaho Code §§ 42-101, 42-103, 42-202(1), 42-220, 42-226, 42-237a.g., 42-351, and 42-602 et seq.

Idaho Code § 42-604 requires the Director to form water districts to properly administer uses of water from “each public stream and tributaries, or independent sources of water supply,” for which a court having jurisdiction thereof has adjudicated the water rights.

The Director has “direction and control of the distribution of water from all natural water sources within a water district . . .” Idaho Code § 42-602. The Director must “distribute water in water districts in accordance with the prior appropriation doctrine.” *Id.*

The Director has discretion to determine how the “mandatory water districts shall be structured” and may “create new districts, revise existing districts, or even abolish districts, as the Director finds necessary for the efficient distribution of water resources.” *In re Idaho Dep’t of Water Res. Amended Final Order Creating Water Dist. No. 170*, 148 Idaho 200, 211, 220 P.3d 318, 329 (2009). “[E]fficient distribution of water . . . requires that IDWR implement sufficient administrative oversight to prevent conflicts from arising, where possible, and to furnish a framework of evenhanded oversight which allows for consistent planning by water users. *Id.*

ANALYSIS

In the W&S Stipulation, the State of Idaho agreed to take certain actions to facilitate the administration of water rights in the Salmon River drainage. Specifically, the state agreed to create a water district to administer water rights within the basin, including water rights issued subsequent to September 1, 2003, which are subject to the Wild & Scenic water rights held by the United States.

Although existing water rights (as of September 1, 2003) on sources identified as separate streams in the Basin 74 General Provisions are not subject to the Wild & Scenic water rights held by the United States, water rights issued after September 1, 2003 on those sources are subject to the Wild & Scenic water rights.² Administering water rights junior to September 1, 2003 will require coordination across water district boundaries. The W&S Stipulation also sets forth standards for measurement and reporting of surface and ground water diversions within the Upper Salmon River drainage. Having a single water district over all of the Upper Salmon River drainage will lead to uniformity in measurement and reporting of diversions. Water District 170 is needed to facilitate efficient distribution of the water rights throughout all of the basins and subdistricts in the Upper Salmon River drainage, including Basin 74.

² The separate streams provision states that future water rights from the sources identified as separate streams “are not considered to be subject to prior downstream rights on the Lemhi River proper.” *Basin 74 General Provisions* at 2. However, future water rights from the sources identified as separate streams in the Basin 74 General Provisions may be subject to prior downstream rights on the Salmon River, including the Wild & Scenic rights held by the United States.

Concerns Raised by Basin 74 Water Users

At the hearing, Carl Ellsworth expressed opposition to the expansion of Water District 170. Mr. Ellsworth testified that if the existing water districts in Basin 74 are incorporated into Water District 170, the existing water districts should remain intact as subdistricts, there should be no additional cost to water users, and ground water rights should be administered by the individual subdistricts. Merrill Beyeler's testimony was similar to Mr. Ellsworth's.

Written comments submitted by the Upper Salmon Basin Watershed Advisory Committee state that the expansion of Water District 170 "is necessary to satisfy the mandate of the [W&S Stipulation]."

Written comments were submitted by James Whittaker³ and an identical *Statement of Public Witnesses* ("Joint Statement") was signed by 82 water users in Basin 74 (Mr. Whittaker and the 82 water users hereinafter referred to as "Objectors"). The Objectors raise six specific objections to the proposed changes: (1) The expansion of Water District 170 violates the separate streams provision set forth in the Basin 74 General Provisions; (2) The expansion of Water District 170 will negatively impact the high flow provision set forth in the Basin 74 General Provisions; (3) The expansion of Water District 170 will create a conflict of interest for the watermaster of Water District 170; (4) There is no evidence which suggests that water districts in Basin 74 are not performing their duties, and the W&S Stipulation does not require that existing, functioning water districts be incorporated into Water District 170; (5) There is no justification to include ground water diversions in existing surface water districts; (6) Water districts 74U, 74K and 74Y should not be combined with Water District 74 because of an infringement on the separate streams provision.

Separate Streams Provision

The expansion of Water District 170 will have no effect on the separate streams provision. The Department and the watermasters for the various districts have a statutory duty to deliver water according to the elements and conditions of the SRBA decrees, including the Basin 74 General Provisions. The statutes which give the Director the authority to create and modify water districts do not grant the Director the authority to amend or ignore the elements of the SRBA partial decrees. The twenty-seven sources identified in the separate streams provision will continue to be administered as separate streams.

The Objectors assert that a watermaster cannot effectively administer multiple sources of water, especially if some of the sources are designated as separate streams under the Basin 74 General Provisions. *Joint Statement* at 1-2. This argument has no merit, particularly in Basin 74. Water District 74 currently includes the Lemhi River, but also includes seven of the water sources identified as separate streams in the Basin 74 General Provisions. The watermaster for Water District 74 has been able to administer these sources as separate streams for many years without issue. The watermaster for Water District 170 will be able to do the same.

³ Mr. Whittaker also read his statement into the record during the hearing.

High Flow Provision

The expansion of Water District 170 will have no effect on the high flow provision. According to the terms of the high flow provision, “[t]he practice of diverting high flows in the Lemhi Basin . . . is allowed provided . . . existing decreed rights and future appropriations of water are first satisfied.” *Basin 74 General Provisions* at 2. Expanding Water District 170 does not diminish the high flow usage in any way. Such usage will continue to be available only when all “existing decreed rights and future appropriations” are satisfied. *Id.*

Conflict of Interest

Objectors believe expanding Water District 170 and designating the existing water districts in Basin 74 as subdistricts of Water District 170 will create a “conflict of interest” for the Water District 170 watermaster because certain water users in the district will receive additional water at the same time other water users in the district are curtailed. *Joint Statement* at 2. The same argument could be made for every water district in the state. It is not proper to characterize the duty of a watermaster to deliver water to senior water rights and curtail junior water rights as a conflict of interest. All watermasters, including the watermaster for Water District 170, have a duty to deliver water rights according to the elements of the decrees. For the water districts in Basin 74, this duty includes administration of water rights under the separate streams and high flow provisions. The argument that expanding Water District 170 to include the drainages identified as separate streams will create a temptation for the watermaster to disregard the separate streams provision is without merit.

W&S Stipulation

Objectors argue that the W&S Stipulation does not *mandate* the expansion of Water District 170 to include existing water districts in Basin 74. *Joint Statement* at 2. While that argument may be correct, the W&S Stipulation does contemplate expansion of Water District 170 as needed to facilitate management of water rights throughout the Upper Salmon River drainage. *See W&S Stipulation*, par. 2(b)(2), p. 4. In addition, the Director has discretion to determine how the “mandatory water districts shall be structured” and may “create new districts, revise existing districts, or even abolish districts, as the Director finds necessary for the efficient distribution of water resources.” *In re Idaho Dep’t of Water Res. Amended Final Order Creating Water Dist. No. 170*, 148 Idaho at 211, 220 P.3d at 329. By expanding Water District 170 to include Basin 74, the Department will better be able to guarantee that the provisions of the W&S Stipulation are met. As stated above, having a single water district over all of the Upper Salmon River drainage will lead to uniformity in the measurement and reporting of diversions. Further, there will be greater consistency in how water rights junior to September 1, 2003, are administered throughout the drainage. Water District 170 will offer assistance to watermasters where necessary to ensure that each subdistrict is measuring, reporting and administering water rights properly.

Combining Surface Water Rights and Ground Water Rights

Objectors assert that including ground water diversion in the existing surface water districts in Basin 74 will not work because “different expertise is required for measuring ground water well diversions as opposed to surface water diversions.” *Joint Statement* at 3. If the proposed changes are adopted, the Department will issue a measuring device order for Basin 74, requiring ground water users to install Department-approved flow meters. Therefore, the watermasters for existing water districts in Basin 74 will not be required to conduct instantaneous measurements of ground water diversions using portable flow meters. The watermasters will simply be required to take readings from installed flow meters. This activity is no different than reading flow meters which may be installed on a pump station diverting water from a creek.

Objectors point to the Camas Creek drainage, specifically Water Districts 31 and 110, as example of an area where the Department has divided ground water diversions and surface water diversions into separate water districts. *Joint Statement* at 3. These particular water districts do not support the Objectors argument. Although Water District 110 only regulates ground water diversions, the Water District 31 watermaster regulates Mud Lake and its tributaries, including ground water wells which pump into Mud Lake. Therefore, Water District 31 regulates both surface water and ground water diversions. Other examples of water districts which include surface water and ground water diversions include Water Districts 01, 29O, 34, 37, 37B, 37O and 130. It is not uncommon for water districts in Idaho to include surface water and ground water diversions.

Unneeded Layer of Administration

During the hearing, some people in attendance asked Ms. Yenter why the proposed changes were needed. These individuals expressed a concern about creating “another layer of bureaucracy” for water users. Objectors raise the same concern. *Joint Statement* at 3. Ms. Yenter acknowledged that Water District 170 would add another layer of water district administration for water users in Basin 74, but noted that Water District 170 will provide valuable support to the existing water districts. She stated that Water District 170 will not assess water users within subdistricts which are operating in accordance with Idaho law. The 2018 Resolutions for Water District 170 include the following provision: “A subdistrict that adequately measures, records, reports and controls diversions will not be subject to assessments from [Water District] 170”.⁴ Ms. Yenter explained that subdistricts can continue to function independently with minimal interference from Water District 170 as long as the measurement and reporting requirements are met. If Water District 170 subdistricts need assistance with compliance issues such as inadequate measuring devices or unauthorized uses, or have technical or administrative questions, the watermaster for Water District 170 can address those issues, allowing the subdistricts to focus on their primary responsibility of delivering water.

⁴ Water District 170-Upper Salmon River Adopted Resolutions. Budget Resolution adopted 2018.

Combining Water Districts 74, 74K, 74U and 74Y

Objectors oppose combining Water Districts 74K, 74U and 74Y into Water District 74 because of potential infringement of the separate streams provision. *Joint Statement* at 3. Inactive water districts 74K and 74Y each contain only a couple of diversions and a small group of water users. Re-activating these districts and satisfying all of the annual requirements for these districts would be inefficient given the size of the districts. However, these diversions must still be measured and accounted for. The watermaster of Water District 74 will be able to effectively and efficiently administer four additional diversions in the basin. The fact that each of these tributaries is identified as a separately administered stream is not an issue and has been addressed above. Water District 74U (Andrews and Slough Ditch) is a diversion from the Lemhi River and should be under the jurisdiction of the Water District 74 watermaster.

CONCLUSIONS OF LAW

Although many of the existing water districts in Basin 74 have been administering water rights within their existing districts for decades, the expansion of Water District 170 to include these existing water districts as subdistricts will create consistency of administration throughout the entire Upper Salmon River drainage. The Department and Water District 170, through coordination with subdistrict watermasters, will have a greater ability to ensure compliance with the measurement and reporting terms of the W&S Stipulation. The Department and Water District 170, through coordination with subdistrict watermasters, will have a greater ability to identify and curtail unauthorized water uses within the subdistricts. Water District 170 will also be able to consistently administer water rights junior to September 1, 2003 across the entire Upper Salmon River drainage.

To facilitate the efficient distribution of water rights in Basin 74, the Department should approve the proposed changes.

ORDER

Based upon and consistent with the foregoing, IT IS HEREBY ORDERED that:

1. Water Districts 74 (Lemhi River), 74K (Pattee Creek), 74U (Andrews and Slough Ditch), and 74Y (Yearian Creek) are combined into Water District 74 (Lemhi River). The watermaster for Water District 74 will assume responsibility to administer water rights from the creeks and streams within former Water Districts 74K, 74U and 74Y. The watermaster for Water District 74 will not administer headgates within lateral ditch companies downstream of the diversion from the stream.

2. Water Districts 74 (Lemhi River), 74A (Geertsen Creek), 74B (Kirtley Creek), 74C (Bohannon Creek), 74F (Pratt Creek), 74G (Sandy Creek), 74J (Withington Creek), 74M (Agency Creek), 74Q (Mill Creek), 74W (Texas, Hawley, Timber, Junction, Bull, Jake and Canyon Creeks) and 74Z (Big Eight Mile and Lee Creeks) are revised to include all surface and ground water rights within their respective boundaries with the exception of stockwater and

domestic water rights as defined by Idaho Code §§ 42-111 and 42-1401A(11), and rights used for in-stream watering of livestock as defined by Idaho Code § 42-113.

3. The boundaries of Water District No. 170 are revised to include all surface and ground water rights in Basin 74, with the exception of stockwater and domestic water rights as defined by Idaho Code §§ 42-111 and 42-1401A(11), and rights used for in-stream watering of livestock as defined by Idaho Code § 42-113. *See* Attachment A.

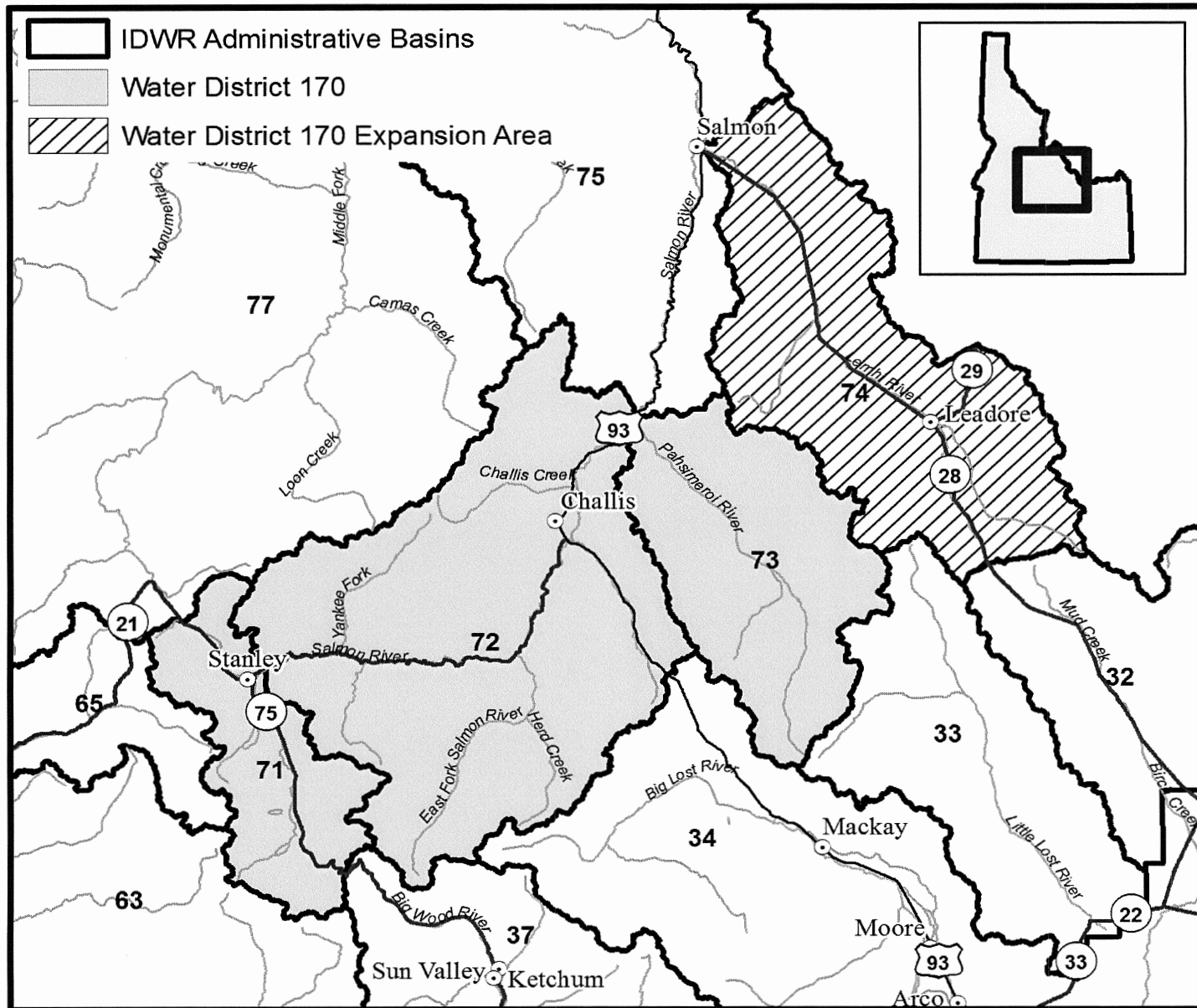
4. Water Districts 74 (Lemhi River), 74A (Geertsen Creek), 74B (Kirtley Creek), 74C (Bohannon Creek), 74F (Pratt Creek), 74G (Sandy Creek), 74J (Withington Creek), 74M (Agency Creek), 74Q (Mill Creek), 74W (Texas, Hawley, Timber, Junction, Bull, Jake and Canyon Creeks) and 74Z (Big Eight Mile and Lee Creeks) are hereby designated as subdistricts within Water District No. 170. These subdistricts shall continue to meet annually to elect a watermaster, adopt a budget, and select an advisory committee. These subdistricts shall be responsible for distribution of surface and ground water rights within their respective boundaries that have been decreed in the SRBA.

DATED this 10th day of April, 2018.

A handwritten signature in black ink, appearing to read 'J. Cefalo', written over a horizontal line.

James Cefalo
Hearing Officer

Attachment A



CERTIFICATE OF SERVICE

I HEREBY CERTIFY that on this 10th day of April 2018, the above and foregoing document was served on each individual or entity on the service list for this matter on file at the Idaho Department of Water Resources, 322 East Front Street, Boise, Idaho, and posted on the Department's website: www.idwr.idaho.gov. Each individual or entity on the service list was served by placing a copy of the above and foregoing document in the United States mail, postage prepaid and properly addressed.



Sarah Shaul
Technical Records Specialist
Idaho Department of Water Resources

EXPLANATORY INFORMATION TO ACCOMPANY A PRELIMINARY ORDER

(To be used in connection with actions when a hearing was held)

The accompanying order is a **Preliminary Order** issued by the Idaho Department of Water Resources (Department) pursuant to section 67-5243, Idaho Code. **It can and will become a final order without further action of the Department unless a party petitions for reconsideration or files an exception and brief as further described below:**

PETITION FOR RECONSIDERATION

Any party may file a petition for reconsideration of a preliminary order with the hearing officer within fourteen (14) days of the service date of the order as shown on the certificate of service. **Note: the petition must be received by the Department within this fourteen (14) day period.** The hearing officer will act on a petition for reconsideration within twenty-one (21) days of its receipt, or the petition will be considered denied by operation of law. See section 67-5243(3) Idaho Code.

EXCEPTIONS AND BRIEFS

Within fourteen (14) days after: (a) the service date of a preliminary order, (b) the service date of a denial of a petition for reconsideration from this preliminary order, or (c) the failure within twenty-one (21) days to grant or deny a petition for reconsideration from this preliminary order, any party may in writing support or take exceptions to any part of a preliminary order and may file briefs in support of the party's position on any issue in the proceeding to the Director. Otherwise, this preliminary order will become a final order of the agency.

If any party appeals or takes exceptions to this preliminary order, opposing parties shall have fourteen (14) days to respond to any party's appeal. Written briefs in support of or taking exceptions to the preliminary order shall be filed with the Director. The Director retains the right to review the preliminary order on his own motion.

ORAL ARGUMENT

If the Director grants a petition to review the preliminary order, the Director shall allow all parties an opportunity to file briefs in support of or taking exceptions to the preliminary order and may schedule oral argument in the matter before issuing a final order. If oral arguments are to be heard, the Director will within a reasonable time period notify each party of the place, date and hour for the argument of the case. Unless the Director orders otherwise, all oral arguments will be heard in Boise, Idaho.

CERTIFICATE OF SERVICE

All exceptions, briefs, request for oral argument and any other matters filed with the Director in connection with the preliminary order shall be served on all other parties to the proceedings in accordance with Rules of Procedure 302 and 303.

FINAL ORDER

The Department will issue a final order within fifty-six (56) days of receipt of the written briefs, oral argument or response to briefs, whichever is later, unless waived by the parties or for good cause shown. The Director may remand the matter for further evidentiary hearings if further factual development of the record is necessary before issuing a final order. The Department will serve a copy of the final order on all parties of record.

Section 67-5246(5), Idaho Code, provides as follows:

Unless a different date is stated in a final order, the order is effective fourteen (14) days after its service date if a party has not filed a petition for reconsideration. If a party has filed a petition for reconsideration with the agency head, the final order becomes effective when:

- (a) The petition for reconsideration is disposed of; or
- (b) The petition is deemed denied because the agency head did not dispose of the petition within twenty-one (21) days.

APPEAL OF FINAL ORDER TO DISTRICT COURT

Pursuant to sections 67-5270 and 67-5272, Idaho Code, if this preliminary order becomes final, any party aggrieved by the final order or orders previously issued in this case may appeal the final order and all previously issued orders in this case to district court by filing a petition in the district court of the county in which:

- i. A hearing was held,
- ii. The final agency action was taken,
- iii. The party seeking review of the order resides, or
- iv. The real property or personal property that was the subject of the agency action is located.

The appeal must be filed within twenty-eight (28) days of this preliminary order becoming final. See section 67-5273, Idaho Code. The filing of an appeal to district court does not itself stay the effectiveness or enforcement of the order under appeal.

ACE HARDWARE
1216 SHOUP ST
SALMON ID 83467

KAREN ADAMS AND THAD GERHEIM
PO BOX 62
STANLEY ID 83278

ARNYCE R AND RONALD G ADAMS
6730 MORNING RIDE CIR
ALEXANDRIA VA 22315

JOSEPH L AND REBECCA ADAMS
547 HWY 28
SALMON ID 83467

TEDDY K ADAMS
PO BOX 65
LEADORE ID 83464-0065

MIKE MC NEAL AND MYRIAM ESPINOSA AGUIRRE
5030 SEAVIEW AVE
CASTRO VALLEY CA 94546

DONNA R ALDOUS
56 THREE MILE LN
SALMON ID 83467

DICK, DON AND SUZIE ALDOUS AND WAYNE DOUGLAS
SCOGGINS
631 LEMHI RD
SALMON ID 83467

CAROL M AND STANLEY J ALLEN
1705 MARY ST
SALMON ID 83467

DEBRA ALLRED
1723 FAUNSDALE CIRCLE
SANDY UT 84092

AMERICAN RIVER TOURING ASSN INC
24000 CASA LOMA RD
GROVELAND CA 95321

JOHN C AMONSON JR AND JUDITH W AMONSON
14 ZEPH CREEK RD
LEADORE ID 83464

DIANE B AND ROBERT B AMONSON
PO BOX 51
LEMHI ID 83465

MARIAN B AMONSON
PO BOX 36
LEMHI ID 83465

JEAN AND ROBERT C ANDERS
306 S TERRACE
SALMON ID 83467-4141

JACK AND JEANNE ANDERSEN
4135 N 900 W
PLEASANT VIEW UT 84414

BRETT K AND CHRIS S ANDERSON
1167 CUSTER RD
ELLIS ID 83235

ALLEN R ANDERSON
HC 68 BOX 353
CLAYTON ID 83227

MARK ANDERSON
871 MORNINGSIDE DR
TWIN FALLS ID 83301

DARE R AND JOYCE ANDERSON
221 ANDERSON RD
PO BOX 95
LEADORE ID 83464-0095

G WALLACE AND RUTH M ANDERSON
PO BOX 61
TENDROY ID 83468

BARBARA AND ROBERT ANDREWS
PO BOX 22
CHALLIS ID 83226

BILL E AND TERRY L ANDREWS
10 B & T RD
SALMON ID 83467-5438

GAIL D AND LOUISE ANDREWS
37 17-MILE RD
SALMON ID 83467

LOLA ANDREWS
309 N WARPATH
SALMON ID 83467

MELVIN W ANDREWS
809 JEFFERSON ST
SALMON ID 83467

CHRISTINE M ANDREWS
305 WATER ST
SALMON ID 83467

RICHARD J ANDREWS
SUNBEAM VILLAGE
HC 67 BOX 310
STANLEY ID 83278

LORNA ANDREWS
RT 1 BOX 48-C
SALMON ID 83467

BOYD E ANDREWS
1438 HWY 28
SALMON ID 83467-5333

BONNIE AND KELLY W ANGLIN
PO BOX 56
TENDROY ID 83468

VIOLA B ANGLIN
PO BOX 35
TENDROY ID 83468

DAVID M AND JODIE MARIE ANTONELLI
516 MAIN ST
PMB 101
SALMON ID 83467

KENNETH GILMORE SMITH AND STEVEN ROBERT APPLETON
PO BOX 15508
BOISE ID 83715

MARK A AND VICKI ARMBRUSTER
PO BOX 1127
CHALLIS ID 83226

SAMUEL F ARMOUR
944 E 1300 N
SHELLEY ID 83274

ILENE J ARRINGTON
PO BOX 1110
SALMON ID 83467

ARROW A RANCH LLLP
5821 MORNING DOVE DR
NAMPA ID 83686

ASSURED PERFORMANCE NETWORK
24422 AVENIDA DE LA CARLOTA STE 490
LAGUNA HILLS CA 92653

DAVID W AND REBECCA J AUWEN
12 N HAWK RD
SALMON ID 83467

JENNIFER JO AYERS
87 HAWLEY CREEK RD
LEADORE ID 83464

JOHN AZEVEDO
PO BOX 25
HEALDSBURG CA 95448

B & C PROPERTY HOLDINGS LLC AND B&C PROPERTY
HOLDINGS LLC
PO BOX 350
STANLEY ID 83278

B & H APARTMENTS
402 MAIN ST
SALMON ID 83467

B & H APARTMENTS
402 MAIN ST
SALMON ID 83467

B P BAR RANCH INC
C/O JIM SPECK
SPECK & AANESTAD
PO BOX 987
KETCHUM ID 83340-0987

CHARLES RUSSELL AND TERESA KAYE BABB
PO BOX 559
CHALLIS ID 83226

G LYNN AND SHARON L BACKUS
PO BOX 5138
ETNA WY 83118

DARRELL BAGLEY
14574 E LANGELL V RD
BONANZA OR 97623

ANTONY YACOMELLA AND RICHARD BAILEY
2003 E QUEEN AVE
SPOKANE WA 99207

ALESHA AND SHANE BAILEY
PO BOX 108
TENDON ID 83468

JOE A BAILEY AND MARK YOHMAN
1609 MARY ST
SALMON ID 83467

CECIL T JACKSON AND JUDITH A BAILEY JACKSON
1705 LEMHI RD
SALMON ID 83467

JUDITH A BAILEY-JACKSON
42 WILD ROSE RD
SALMON ID 83467

MYRON GENE AND PATSY KAYE BAIR
24 SKINNER RANCH RD
SALMON ID 83467

SHERRILL M BAIRD
PO BOX 312
STANLEY ID 83278

BRET BAIRD
82 HWY 28
SALMON ID 83467

GLORIA BAIRD SCHWARTING
409 RIVER ST
SALMON ID 83467

CHERYL K AND RICHARD DOUGLAS BAKER
HC 68 BOX 350
CLAYTON ID 83227

EDDIE BAKER JR AND EDDIE E BAKER
HC 68 BOX 375
CLAYTON ID 83227

DAVID WAYNE, JUSTIN WAYNE, MELODIE L AND WAYNE
BAKER
HC 68 BOX 304
CLAYTON ID 83227

D WAYNE BAKER
HC 68 BOX 304
CLAYTON ID 83227-9601

ROBERT E AND GLORIA J BAKER
1911 COFFEE LN
SABASTOPOL CA 95472-9613

DIANA LEE CRAIG AND JEFFREY C BAKER
1650 MOON MOUNTAIN RD
SONOMA CA 95476

BALSAM WELL OWNERS ASSOCIATION INC
C/O PETER MADSEN
PO BOX 334
HAILEY ID 83333

BAR 13 RANCH LTD PARTNERSHIP AND JACK AND ROSS
GODDARD
PO BOX 11
TENDLOY ID 83468

ANNETTE AND SPIRO DASKALOS, BAR 20 RANCH LLC,
DASKALOS FAMILY 2002 TRUST AND SALMON IDAHO
INVESTORS LLC
1560 FOOTHILLS VILLAGE DR
HENDERSON NV 89012

BAR G FARMS ENTERPRISES
PO BOX 175
MAY ID 83253

WILLIAM P BARNES
3391 W 3150 N
MOORE ID 83255

MATTHEW BARNEY
440 44TH DR
LONG ISLAND CITY NY 11101

MICHAEL AND TRACY BARRETT
PO BOX 1104
CHALLIS ID 83226

LENORE H, MICHAEL H AND R M BARRETT
PO BOX 347
CHALLIS ID 83226

N LORRAINE BARRETT
PO BOX 964
SALMON ID 83467

LAURIE E BARRETT
9965 W LA HONTAN DR
BOISE ID 83709-0434

CALVIN R AND GARY BARRETT
24 RED ROCK STAGE RD
SALMON ID 83467

JIMMIE AND STEVE BARTLETT
412 CONFEDERATE DR
SALMON ID 83467

DAVID AND KATHY BATTERTON
PO BOX 67
TENDLOY ID 83468

CHALLIS CREEK CATTLE CO LLC, LYNDELLA A AND STEPHEN G
BAUCHMAN AND STEPHENS GULCH HOMESTEADS WATER
ASSN
PO BOX 10
CHALLIS ID 83226

AMY AND TODD BAUMER
PO BOX 974
SALMON ID 83467

BBB ASSETS LLC
150 LIMELIGHT WAY
OROVILLE CA 95966

ROMAN BEACHY JR AND VONDA BEACHY
277 RED ROCK STAGE RD
SALMON ID 83467

ROSS AND VELMA BEALE
647 W 24TH
BURLEY ID 83318

BRIAN K EVARTS, NANCY E BEALS AND WARREN W WHITE
PO BOX 1090
LA CONNER WA 98257

LOIS A AND RALPH D BEAN
PO BOX 41
LEMHI ID 83465

BRUCE M AND JOAN D BEASLEY
203 PAHSIMEROI RD
ELLIS ID 83235

ALISON L BEECHERT
PO BOX 42
STANLEY ID 83278

JAMES R AND JO ANN BENNETTS
PO BOX 36
CHALLIS ID 83226

DAVID K AND SUSAN D BENNION AND STANLEY LAKE CREEK
WATER USERS ASSN
2212 RIDGE POINT WAY
BOISE ID 83712

AMY AND ROBERT T BERASI
26 SEVENTEEN MILE RD
SALMON ID 83467

RICHARD AND VICTORIA BERGEMAN
2255 PAHSIMEROI RD
MAY ID 83253

FRANK R BERLAGE AND FRANK R BERLAGE LIVING TRUST
PO BOX 1771
LA JOLLA CA 92038

DANIEL L BERMAN
170 S MAIN
SALT LAKE CITY UT 84101

BERT L & DORIS F HATCH TRUST
C/O BERT L & DORIS F HATCH
5 S BEAN LN
SALMON ID 83467

BEYELER RANCHES LLC
PO BOX 62
LEADORE ID 83464

ANTONIO M AND LINDA L BIAIN
4121 N 2600 E
FILER ID 83328

BIG CREEK RANCH LLC
PO BOX 5987
KETCHUM ID 83340-5987

DENYCE AND JOSEPH A BIGLEY
PO BOX 17
TENDRY ID 83468

EMILY AND GORDON BINNING
390 WITHINGTON CREEK RD
PO BOX 309
SALMON ID 83467

MARY AND RANDY BIRD
PO BOX 1044
HAILEY ID 83333

ALICIA AND KRIS BIRD
71 HWY 28
SALMON ID 83467

JANET E AND KURT W BIRD
56 LOWER TEXAS CREEK RD
LEADORE ID 83464

A LEROY AND PHOEBE BIRD
PO BOX 27
TENDROY ID 83468

KENT AND LISA BIRD
PO BOX 76
LEADORE ID 83464

JOSEPH R BISHOP
PO BOX 71
TENDROY ID 83468-0071

BITTERROOT RANCH
PO BOX 10
TENDROY ID 83468

HOWARD D BLACK
334 W 19TH
IDAHO FALLS ID 83402

JERRY G BLACKBURN
PO BOX 41
LEADORE ID 83464

CHERYL M AND DAVE L BLANCHARD
37652 S HWY 213
MOUNT ANGEL OR 97362

BLICK BROTHERS PARTNERSHIP
PO BOX 635
CASTLEFORD ID 83321

GEORGE B AND SUSAN H BLODGETT
701 IMPERIAL 3C
SALMON ID 83467

RONALD W AND SHELLEY E BLOXHAM
PO BOX 359
CHALLIS ID 83226

BNH PROPERTIES LLC
PO BOX 367
SPANISH FORK UT 84660

ALLEN AND VIRGINIA BODENHAMER
22 S BARRACKS LN
SALMON ID 83467

MARLENE J BOLEN
9190 AQUARIUS ST
BOISE ID 83709

ROSS BOND JR
10395 BONNIE LN
LA MESA CA 91941

ROBERT A BONUCCELLI
PO BOX 141449
SPOKANE WA 99214

ARLA BURCH AND CHARLES F BOOTS
25 BOOTS RD
SALMON ID 83467

MARJORIE D AND ROBERT R BOREN
HC 67 BOX 742
CLAYTON ID 83227

JAY AND LOIS BOWMAN
24 BOWMAN LN
SALMON ID 83467

CHESTER AND LUCILLE BOWMAN
144 HWY 28
SALMON ID 83467

CHESTER AND LUCILLE BOWMAN
144 HWY 28
SALMON ID 83467

ALICE R AND W DEAN BOYLE
528 S CATHERINE LN
MERIDIAN ID 83642

CYNTHIA S AND KEVIN D BRADEN
21835 HWY 75
CLAYTON ID 83227

ROBERT D AND SHARON SKROH BRADLEY
PO BOX 241
CHALLIS ID 83226

JAY L AND PETER W BRADSHAW
PO BOX 155
CHALLIS ID 83226

JARED S AND TEVAGENE A BRAGG
PO BOX 1143
SALMON ID 83467

JUDY A AND ROGER J BRAUN
598 MEADOW RD
CHALLIS ID 83226

JOANNE AND MICHAEL BRAUN
PO BOX 474
CLAYTON ID 83227

BRECKENRIDGE FAMILY LTD PARTNERSHIP
C/O KATIE BRECKENRIDGE
PO BOX 685
PICABO ID 83348

FAYE J, RAYMOND S AND ROBERT G BREGANTE
3311 LUNDBURG LN
POCATELLO ID 83204

THEODORE BRENNA
PO BOX 1211
FORT BRAGG CA 95437

ROBERT L AND TERESA A BRESHEARS
3740 ASHUE RD
WAPATO WA 98951

KAREN BROOKS
PO BOX 1172
CHALLIS ID 83226

DELLA D BROWER
PO BOX 190
CLAYTON ID 83227

JOHN T BROWN
PO BOX 61
SUN VALLEY ID 83353

KATHERINE A BROWNING AND ROGER A BROWNING TRUST
360 N BEDFORD DR STE 204
BEVERLY HILLS CA 90210-5157

RICHARD M BROWNING
1900 CHUKAR LN
CLAYTON ID 83227

DELA DEVLIN AND FRED HAROLD BRUBAKER
PO BOX 97
STANLEY ID 83278

ALY M BRUNER AND NANCY A DEL COLLETTI
PO BOX 1146
CHALLIS ID 83226

BRENT J AND RUTH E ROUNDS BRUNKER
HC 68 BOX 303
CLAYTON ID 83227

DALE BRUNO
PO BOX 1053
CHALLIS ID 83226

ROBERT H BRYSON
1608 JOHNSTON AVE
RICHLAND WA 99354

BRENDA AND TRAVIS BULLOCK
PO BOX 1189
CHALLIS ID 83226

JAMES L AND SHELLY BURCH
304 LEMHI RD
SALMON ID 83467

RONALD D BURCH
PO BOX 1188
SALMON ID 83467

ELAINE AND R D BURCH
299 LEMHI RD
SALMON ID 83467

R RICHARD AND RUTH E BURCHILL
HC 63 BOX 1575-3
CHALLIS ID 83226-9301

THORNTON BURKE
173 HAYNES CR RD
SALMON ID 83467

JENNESS R BUTTERFIELD
PO BOX 87
CHALLIS ID 83226

DONNA L AND THOMAS A BUTTS
PO BOX 6
CHALLIS ID 83226

WAYNE F BUTTS
DBA GATEWAY AUTO PARTS
PO BOX 624
CHALLIS ID 83226

RONALD E BYERS
1044 LEMHI RD
SALMON ID 83467

SHIRLEY F CADMAN
PO BOX 20
TENDON ID 83468-0020

JONI D AND PIERRE C CAIN
170 ROD & GUN CLUB LOOP
CHALLIS ID 83226

CAROLYN CALKINS AND HERMAN W PLEUS
260 CHECOLA CIRCLE
BOISE ID 83704

CANADAY PROPERTIES LLC
10500 MAIN ST
MONTGOMERY ID 83617

HOLLY AND JOEL CANNON
99 LEMHI BACK RD
SALMON ID 83467

MINA R AND ROYDEN O CAPPS
BOX 45
LEMHI ID 83465

EVELYN R AND THOMAS H CARLSON
6220 RD 216
PINE BLUFFS WY 82082

NORMA E AND ROBERT E CARLSON
740 LEE CREEK RD
LEADORE ID 83464

BRIAN S AND THERESA CARPENTER
PO BOX 1393
SALMON ID 83467

JOANN CARROLL
62 CEMETERY LN
SALMON ID 83467

HANS L CARSTENSEN III AND MARY S CARSTENSEN
PO BOX 21764
ROANOKE VA 24018

KAREN CARTER
1896 N 800 W
PRESTON ID 83263

JOHN M CASPER
8 S BAKER RD
SALMON ID 83467

GEORGE C CASTLE
PO BOX 3070
KETCHUM ID 83340

ELI J, KIMBERLY K AND MANDI L CAYWOOD
PO BOX 90
TENDRY ID 83468

DIANN AND JOSEPH R CAYWOOD
PO BOX 3
TENDRY ID 83468

LOWELL, LOWELL D AND MARY E CERISE
56 WHITING RD
SALMON ID 83467

JOHN R AND PATRICIA W CHALLIS
CHALLIS CREEK RANCH
PO BOX 1220
CHALLIS ID 83226-1220

CHALLIS IRRIGATION CO
C/O BARKER ROSHOLT & SIMPSON
ATTN TRAVIS THOMPSON
195 RIVER VISTA PL STE 204
TWIN FALLS ID 83301

CHALLIS IRRIGATION CO INC
PO BOX 71
CHALLIS ID 83226

CHALLIS JOINT SCHOOL DISTRICT #181
PO BOX 304
CHALLIS ID 83226

CHALLIS RECREATION & DEVELOPMENT CO
PO BOX 81
CHALLIS ID 83226

ADELINE M AND SAMUEL W CHAMBERS
1471 LESLIE WAY
MERIDIAN ID 83646

C WAYNE AND FAYE RANKIN AND DANIEL W CHANCE
22 STRAWBERRY LN
SALMON ID 83467

CHARTRAND FAMILY TRUST
PO BOX 117
TENDRY ID 83468

DEBORAH K AND RANDALL F CHENEY
31 SUMMER MEADOW LN
SALMON ID 83467

JANIS S AND KERRIE N CHENEY
27 CHENEY LN
SALMON ID 83467

MARGARET L AND RAYMOND F CHENEY
36 CHENEY LN
SALMON ID 83467

JOYCE T CHESNEY
16 RONDEL DR
WEWOKA OK 74884

JOE D & NANCY L CHESTER FAMILY TRUST AND JOE D AND
NANCY L CHESTER
PO BOX 759
CHALLIS ID 83226

ROBERT W AND VIRGINIA H CHEWNING
139 PAHSIMEROI RD
ELLIS ID 83235

MAYANNA J CHIVERS
39 SOUTH LEROY LN
NAMPA ID 83687-8737

ALBERT CHORN
1117 CAMELOT
BOISE ID 83704

JON L CHRISTIANSON
C/O JON L CHRISTIANSON OR WEI S CHRISTIANSON
FOUR TIMES SQUARE
NEW YORK NY 10036

CHRISTOPHER W JAMES TRUST
CHRISTOPHER JAMES TRUSTEE
PO BOX 510
CHALLIS ID 83226

MARY JO AND STEWART CHURCHWELL
HC 82 BOX 4024
CHALLIS ID 83226

MARY JO AND STEWART CHURCHWELL
HC 82 BOX 4024
CHALLIS ID 83226

CIRCLE PI LLC
BOX 2295
MAY ID 83253

CITY OF CHALLIS
PO BOX 587
CHALLIS ID 83226

CITY OF CLAYTON
PO BOX 33
CLAYTON ID 83227

CITY OF LEADORE
PO BOX 157
LEADORE ID 83464-0157

CITY OF SALMON
200 MAIN ST
SALMON ID 83467

CITY OF STANLEY
PO BOX 53
STANLEY ID 83278

BEVA LUE CLARK
700 W TERN DR
KUNA ID 83634-2996

BEVA LUE CLARK
700 W TERN DR
KUNA ID 83634-2996

CHARLENE AND WILLIAM RODGER COBB
1055 BROOK VIEW LN
MANTECA CA 95337

KESTER L AND MONA J COCKRELL AND LAMAR COCKRELL &
SONS LLC
237 LEMHI RD
SALMON ID 83467

BEVERLY AND CHARLES R COCKRELL
32 COCKRELL RD
SALMON ID 83467

CHARLES AND NICHOLE COCKRELL
185 KIRTLEY CREEK RD
SALMON ID 83467

DEBORAH J COLEMAN
PO BOX 68
ELLIS ID 83235

RAYMOND M AND VICKIE J COLSTON
200 WITHINGTON CREEK RD
SALMON ID 83467-5289

ESTELLE A AND GEORGE E COOK
PO BOX 400
STANLEY ID 83278

FRANCES M AND SIDNEY D COOK
31 W FOOTHILL RD
SALMON ID 83467

CARY G AND MERRILEE COOK
436 HWY 28
SALMON ID 83467

CAROLINE AND ORLANDO A CORDOVA
PO BOX 978
CHALLIS ID 83226

CHARLES M CORRIGAN
PO BOX 731
CHALLIS ID 83226

COUNTY OF CUSTER FAIR BOARD
PO BOX 385
CHALLIS ID 83226

COLLEEN A COYNE
HC 68 BOX 308
CLAYTON ID 83227

ANN B AND DELOS P OLSON, KEVIN COINER AND TAMMY
THOMAS COINER
48 DEMICK LN
SALMON ID 83467

CAROL M AND WHITNEY COLLINS
PO BOX 1035
CARMEL VALLEY CA 93924

WILLARD COLSTON
61 THOMAS ST
PORTLAND ME 04102

ROBERTA J ROSTBERG COOK
14120 W JASMINE LN
BOISE ID 83713

JANET F AND RONALD A COOK
49 SUMMER MEADOWS LN
SALMON ID 83467

STEPHEN G COPE
740 ROD AND GUN CLUB LOOP
CHALLIS ID 83226

CORP OF THE PRESIDING BISHOP
CHURCH OF JESUS CHRIST OF LATTER DAY SAINTS
REAL ESTATE SERVICES DIV
50 E NORTH TEMPLE ST
SALT LAKE CITY UT 84150-6320

BRANDON AND MISTI CORRIGAN
PO BOX 1384
CHALLIS ID 83226

EUGENE M AND MARY E COX
HC 63 BOX 1583
CHALLIS ID 83226

ERICA H AND TIMOTHY H CRAIG
PO BOX 81291
FAIRBANKS AK 99708

CRAIG & ELIZABETH REMBER FAMILY TRUST
PO BOX 195
STANLEY ID 83278

CATHY F AND JOHN C CRANNEY
204 LARSON ST
SALMON ID 83467

JAY AND KAY CRESTO
835 N 18TH E
MOUNTAIN HOME ID 83647

JIM AND NANCY CRISMON
PO BOX 2
TENDON ID 83468

DEE ANN CROFOOT
128 SANDY CREEK RD
SALMON ID 83467

KELLI KERNS AND REBECCA AND TIMOTHY CRON
PO BOX 174
STANLEY ID 83278

CSL INC
PO BOX 193
STANLEY ID 83278-0193

FALMA MOYE AND RAY CULLINANE
940 STEPHENS RD
CHALLIS ID 83226

CURTIS FAMILY LLLP
1054 HIGHVIEW LN
TWIN FALLS ID 83301

CHERYL LAVERTY AND MICHAEL A CUTLER
PO BOX 8
CHALLIS ID 83226

HELEN A CUTLER
2233 HILLCREST DR
TWIN FALLS ID 83301

HOWARD R AND ZELLA M CUTLER
23535 HWY 75
CHALLIS ID 83226

DONALD AND SHARON CUTLER
PO BOX 65 HWY 21
STANLEY ID 83278

CYPRUS THOMPSON CREEK MINING CO
C/O BERT DOUGHTY
PO BOX 600
CHALLIS ID 83226

DAN J URBAN AND LYNDA L DALE
PO BOX 1391
CHALLIS ID 83226

JUDY AND SHERMAN DALSGAARD
228 PAHSIMEROI RD
ELLIS ID 83235

JEROLD D AND RHONDA DEE DANCE
401 N WARPATH
SALMON ID 83467

JEROLD D AND RHONDA D DANCE
1603 MICK J
SALMON ID 83467

ROBERT L DANIELS
16 OVERACKER WAY RD
SALMON ID 83467-5429

EVALYN M AND GORDON D DANIELS
PO BOX 1472
SALMON ID 83467

ROBERT H DANIELS
36 CHERRY DR
PO BOX 68
SALMON ID 83467

GLENN DANSIE
PO BOX 1329
CHALLIS ID 83226

MARIAN P DARLING
2676 KENNEDY ST
LARAMIE WY 82070

JAMES AND SANDRA DARTT
PO BOX 594
SALMON ID 83467

CARY L AND CRAIG M DAUGHERTY
PO BOX 1136
AZTEC NM 87410

DAVID LOUIS HAINES & JENNIFER JUNE HAINES JOINT LIVING
TRUST
5984 N RED HILLS AVE
MERIDIAN ID 83646

CHARLES AND LINDA DAVIDSON
52 RED ROCK STAGE RD
SALMON ID 83467

JULEAH AND ORION DAVIDSON
190 HWY 28
SALMON ID 83467

GARY L DAVIS AND ROBERT C HAMMOND
PO BOX 40
CHALLIS ID 83226

CHRISTINA AND MIKE J DAVIS
18 S BAKER RD
SALMON ID 83467

ERNEST DAY AND FRED C HUMPHREYS
C/O W MICHAEL HUMPHREYS
636 IVY LN
SAN ANTONIO TX 78209

CALVIN L AND SHIRLEY P DE CORA
147 LEMHI RD
SALMON ID 83467

CALVIN L DECORA
12 CLARK DR
SALMON ID 83467

MARGARET J AND ROBERT J VALNOSKI AND MARK WILLIAM
DEEN
PO BOX 796
CHALLIS ID 83226

DEFIANCE INVESTMENTS LTD
700-200 BURRARD ST
VANCOUVER BC V6C 3L6

CYNTHIA T DEININGER
HC 68 BOX 357
CLAYTON ID 83227

PATRICIA A AND TERRY R DELESKI
PO BOX 122
TENDON ID 83468

JOANN DEMICK
1414 MAIN
SALMON ID 83467

DUKE AND KAREN DEMICK
8 KARLA DR
SALMON ID 83467

MARLENE R DEMICK
7995 TRES ARROYOS DR
SPARKS NV 89436-6224

JAMES AND LESLIE DENARDO
814 WESTON ST
LANSING MI 48917

UPENDRA DESAI
465 S LINDER RD
MERIDIAN ID 83642

UPENDRA DESAI
465 S LINDER RD
MERIDIAN ID 83642

IRENE AND STEVEN DIERS
HC 63 BOX 1776
CHALLIS ID 83226

DEBRA AND JOHN DIKEMAN
PO BOX 68
CHALLIS ID 83226

DAVID D DIMMER
HC 63 BOX 1570-3
CHALLIS ID 83226

PRESTON E DIXON
PO BOX 367
CHALLIS ID 83226-0367

ROBERT J DIZES
PO BOX 117
CHALLIS ID 83226-0117

CYNTHIA A AND JOHN E DMOCHOWSKI
PO BOX 773
CHALLIS ID 83226-0773

BILL AND NANCY DODD
1169 PAHSIMEROI RD
MAY ID 83253

NIKKI L AND NORMAN D DOLL
PO BOX 154
CHALLIS ID 83226

DAVID N AND SHARON T DOLLINGER
3317 N 28TH ST
BOISE ID 83703

RICK DORONY
800 MAIN ST
SALMON ID 83467

DOT LLP
581 E PROVIDENT DR
BOISE ID 83706

DOUBLE BARREL MANAGEMENT L P AND JACK P AND
SHARON M JAKOVAC
71 RED ROCK STAGE RD
SALMON ID 83467

DOUBLE SPRINGS RANCH LLC
C/O DORIS F TUNNEY
PO BOX 3873
KETCHUM ID 83340

PATRICIA AND STANLEY M DOWTON
700 BURSTEDT LN
ELLIS ID 83235

KAREN A, SYDNEY M AND SYNDEY M DOWTON
PO BOX 7
ELLIS ID 83235

CHRIS DRAKOS
PO BOX 793
BLACKFOOT ID 83221

KEN E NAGY AND NANCY J DRAZNIN
508 W CHESTNUT ST
GENESEE ID 83832

TOM DREWIEN
PO BOX 83
STANLEY ID 83278

BARTON FULSTONE AND INGRID DRIELING
PO BOX 86
TENDON ID 83468

BENJAMIN D PINGREE, DRIGGS FAMILY RANCH TRUST,
PATRICK H FRALEY AND SABEY P GRANGE
1619 SHETLAND CT
MOSCOW ID 83843

WILLIS DU PONT
PO BOX 2468
PALM BEACH FL 33480

WINFRED DUDLEY
12365 MAPLEVIEW ST
LAKESIDE CA 92040

DUNFEE LAND CO LP
81157 AVENIDA LOS CIRCOS
INDIO CA 92203-7571

JAMES E DUNFORD
1531 LEMHI RD
SALMON ID 83467

JAMES A AND WALTRAUD R DUNKLE
PO BOX 1072
CHALLIS ID 83226

JOEL AND SUSAN DYE
PO BOX 26
TENDON ID 83468

E J WILSON & SONS PARTNERSHIP
C/O CHUCK WILSON
LIDDY HOT SPRINGS
DUBOIS ID 83423

EAGLE VALLEY RANCH LLC
446 BOHANNON CREEK RD
SALMON ID 83467

EAST FORK LAND & CATTLE LLC
C/O HOMER B & DEBRA B SAYE
17102 S DR
CYPRESS TX 77433

JEROME L AND MARIAN L EASTMAN
PO BOX 57
TENDON ID 83468

JEFFREY ARTHUR AND SUZANNE MARIE EDER
163 HWY 28
SALMON ID 83467

JAY L AND RHONDA EDWARDS
40 MILLER LN
SALMON ID 83467

JEFFERY J AND MARY E EIDSON
7200 E HIGHLAND VALLEY RD
BOISE ID 83716

CLARELYN AND DOUGLAS L ELGAN
PO BOX 544
SODA SPRINGS ID 83276

ELKHORN PLACER ASSN
C/O TODD JOHNSON
1196 OCTOBER CV
SHELLEY ID 83274

DAVID R AND JEANNE ELLIS
159 PAHSIMEROI RD
ELLIS ID 83235

CLARA E AND DUANE R ELLIS
PO BOX 146
LEADORE ID 83464

ELLSWORTH ANGUS RANCH
PO BOX 60
LEADORE ID 83464

CARYL L AND GLENN A ELZINGA
19 MOEN LN
MAY ID 83253-2000

EMMY S BLECHMANN 2002 REVOCABLE TRUST
C/O EMMY BLECHMANN
PO BOX 184
SUN VALLEY ID 83353

SHARON ARLENE ENDERLIN
13340 COUNTY ROAD 60
ALTURAS CA 96101-7508

ROLF ENGH
1928 HUMBOLDT AVE S
MINNEAPOLIS MN 55403

MARVIN AND MICHELLE ENGLAND
PO BOX 723
SALMON ID 83467

MARY LUCACHICK AND TONY ENGLEMAN
671 N MORNINGSIDE WAY
BOISE ID 83712

EVERETT P AND MARY E ENZENAUER
PO BOX 1776
HEALDSBURG CA 95448-1776

ESTATE OF GERALD D GREEN
311 S GILLETTE AVE
GILLETTE WY 82716

ESTATE OF LEWIS BIRCH
PO BOX 1345
SALMON ID 83467

ESTATE OF ROGER KENT OGDEN AND PENNY J OGDEN-
EDWARDS
2330 S 350 W
PERRY UT 84302

JAMES W AND LYNDA K EVANS
194 HWY 28
SALMON ID 83467

KARLENE AND RODNEY E EVANS
HC 63 BOX 1855
CHALLIS ID 83226

AMANDA WORTHY AND BRANDON FAHNHOLZ
18 STRAWBERRY LN
SALMON ID 83467

FAR NIENTE RANCH LLC AND GREGORY P AND LAURA J
TORLAI
PO BOX 135
HOLT CA 95234

DAVID A AND KAREN M FARLEY
5550 N TUMBLEWEED PL
BOISE ID 83713

JUSTIN AND PATRICIA FARR
PO BOX 1255
CHALLIS ID 83226

CURTIS R AND SHANNON R FAYLE
1480 LEMHI RD
SALMON ID 83467

KATHRYN A FELCHLE
204 N WARPATH
SALMON ID 83467

ALYCE AND KEN FELKER
PO BOX 177
CARMEN ID 83462

SALLY A FIDDYMENT
6128 CARRIAGE HOME
RENO NV 89509

ANN FINLAYSON
374 FAIRWAY DR
POCATELLO ID 83201

FIRSTFRUITS FOUNDATION, SHILOH WARM SPRINGS RANCH
LLC AND THE CHRISTOPHER W JAMES TRUST
PO BOX 510
CHALLIS ID 83226

DIANE W AND LEONARD L FISHER
HC 67 BOX 619
CLAYTON ID 83227

LORI O AND PAUL E FISHER
8 FISHER LN
SALMON ID 83467

PAUL E AND WILMA C FISHER AND PAUL E FISHER JR
12 FISHER LN
SALMON ID 83467

FISHER CREEK PARTNERS LLC
HC 64 BOX 9934
STANLEY ID 83278

FISHERMENS LODGE HOME OWNERS ASSN
PO BOX 20
LEMHI ID 83465

FIVE E GROUP LLLP
3094 S ABIGAIL WAY
BOISE ID 83706

FJR PROPERTIES LLC
7213 PERIMETER RD SOUTH
SEATTLE WA 98108

JON AND PEGGY FLINDERS
46 MILLER LN
SALMON ID 83467

FLYING JOSEPH RANCH LLC
C/O JOSEPH CLARK OR JUDY GALFANO
7213 PERIMETER RD S
SEATTLE WA 98108

FOOTHILL DEVELOPMENT
9337 S 1300 E
SANDY UT 84094

DIANE LYNNE MC BRIDE AND RICK FORESTIER
321 SUMMIT CIRCLE
CHALLIS ID 83226

BEN ROY AND JANET T FORSGREN
HC 67 BOX 300
STANLEY ID 83278

KATHARINE A FORSTER
489 SUNNYSIDE LN
JEROME ID 83338

SHANNA L FOSTER
PO BOX 212
LEADORE ID 83464

BOYD D AND RICHARD E FOSTER
PO BOX 55
LEADORE ID 83464

CLAUDIA W AND ROBERT B FRAHME
PO BOX 27
LEMHI ID 83465

E DAN AND T EILEEN FRENCH
218 HWY 28
SALMON ID 83467

BEREND AND CARLA FRIEHE AND LONE PINE BC RANCH LLC
2498 RD S NE
MOSES LAKE WA 98837

JEAN A, JEAN ANN AND LEWIE FROST
PO BOX 318
CHALLIS ID 83226

CLEO ROBERTS AND CLYDE FULLER
PO BOX 151
SUNDANCE WY 82729

JO ANN FUREY AND SHERMAN F FUREY JR
116 N CENTER ST
SALMON ID 83467

JACK B FUREY
PO BOX 280
CHALLIS ID 83226

ANTHONY D, THOMAS AND WILLIAM T GAMMACHE
PO BOX 146
CHALLIS ID 83226

JILL AND LARRY GARDNER
PO BOX 52
TENDLOY ID 83468

BEN AND DELILA T GARECHANA
103 CEMETARY LN
SALMON ID 83467

BONNIE L VINCENT AND BONNIE LYNN AND STEVEN P
GARMAN
PO BOX 4029
KETCHUM ID 83340

RICHARD R AND SUE A GARMENDIA
510 ROD & GUN CLUB LOOP
CHALLIS ID 83226

GEORGE AND PHYLLIS GARRISON
PO BOX 5
TENDLOY ID 83468-0005

GARY HANSON & BEVERLY HANSON FAMILY TRUST
2 NEWCOMBE AVE
YERINGTON NV 89447

DAVID, JASON T AND NANCY E GASSER
PO BOX 120
CLAYTON ID 83227

RONALD AND SALLY J GASSMAN
PO BOX 794
CHALLIS ID 83226

JOHN T AND KATHLEEN M GATENS
36 CHERRY DR
SALMON ID 83467-5062

DARLENE AND JAMES L GAUTHIER
PO BOX 8
TENDLOY ID 83468

GEM 2000 LP
PO BOX 1176
CHALLIS ID 83226

MARLENE GEORDGE
PO BOX 62
SALMON ID 83467

MICHELLE AND RICK GERBO
PO BOX 1905
TRUCKEE CA 96160

DAWN A AND JAMES R GERRISH
2222 PAHSIMEROI RD
MAY ID 83253

JAY D AND RICHARD GIAMPEDRAGLIA
HC 67 BOX 2093
CHALLIS ID 83226

EDWIN R AND MARLENE J GIBSON
1015 LEMHI RD
SALMON ID 83467

PHYLLIS H GILES
1704 MAIN ST
SALMON ID 83467

DAVID D GILES
240 W SUNFLOWER DR
ST GEORGE UT 84790

ANNE M GILHULY
HC 67 BOX 725
CLAYTON ID 83227

T RANDY GILLETTE
11260 BONDSIRE DR
RENO NV 89511

HEATHER DAWNSTAR AND KURT W GINDLING
PO BOX 1110
IDAHO CITY ID 83631

GINI DITCH CO INC
C/O CHARLES R BOGE
1452 THREE FOUNTAINS DR
IDAHO FALLS ID 83404

DEBORAH L AND KENNETH L GINN
20561 DEERHAVEN DR
TUOLUMNE CA 95379

JOHN GITTLESON
205 BEACH ST
SALMON ID 83467

JEFFREY SCOTT AND JILL GLENN
HC 64 BOX 9107
KETCHUM ID 83340

ROBERT P GLENNEY
PO BOX 434
SALMON ID 83467

MARGARET AND MICHAEL J GLODOWSKI
430 CONFEDERATE DR
SALMON ID 83467

MARGUERITE C AND WILLIAM S GODFREY
HC 67 BOX 745
CLAYTON ID 83227

PHILIP R GOODELL II
400 HWY 28
SALMON ID 83467

CHARLES A AND ROBERTA I GOODMAN
61 THREE MILE LN
SALMON ID 83467

DAVID C, DEBBIE E AND DIANA K GOODWIN AND DEBORAH
HARRIS
1730 N WHITE OAK WAY
MERIDIAN ID 83642

CLYDE L AND LEOLA BELLE GOODWIN
204 LEMHI RD
SALMON ID 83467

IRINA GORBUNOV
2652 CHALLIS CREEK RD
CHALLIS ID 83226

CINDY AND GLENN GOULET
274 SANDY CREEK RD
SALMON ID 83467

JULAIN D AND MICHAEL GRAHAM
24179 HWY 75
HC 67 BOX 2039
CHALLIS ID 83226-9701

HEATHER D AND JOSHUA J GRAHAM
PO BOX 1330
CHALLIS ID 83226

LUCILLE B GRAHAM
PO BOX 630956
LANAI CITY HI 96763-0956

JAMES D GRAY
PO BOX 253
CARMEN ID 83462

JAMES D GRAY
PO BOX 253
CARMEN ID 83462

SANDE K GREBE
179 LEMHI RD
SALMON ID 83467

ROBERTA H GREEN
PO BOX 213
CHALLIS ID 83226

BEVERLY I GREEN
859 W LANDER
POCATELLO ID 83204

CORINE AND ERNEST LEE GREGERSEN
25455 N HWY 93
CHALLIS ID 83226

DONALD M GREGORY JR
2741 UNION ST
SAN FRANCISCO CA 94123

CHARLES AND NADINE GRIFFITH
PO BOX 1098
CHALLIS ID 83226

ROBERT G GRISWOLD
PO BOX 4957
KETCHUM ID 83340-4957

GUARDIAN LTD PARTNERSHIP NO 2
1740 S YELLOWSTONE HWY
IDAHO FALLS ID 83403

MELISSA E AND ROLF J GUERRERO
PO BOX 342
DURHAM CA 95938

LINDA JEAN AND ROBERT LYLE GUFFY
HC 68 BOX 365
CLAYTON ID 83227

PATRICIA D GUNTHER
2739 BRODERICK ST
SAN FRANCISCO CA 94123

CODY AND HEIDI GUSTIN
4620 E DEERFLAT RD
KUNA ID 83634

BILL AND PAULA GUTH
25 COUNTRY LIVING LN
SALMON ID 83467

TIMOTHY M HAAKE
1301 K NW STE 900
EAST TOWER
WASHINGTON DC 20005

DARLENE HAAS
PO BOX 55
TENDON ID 83468

JEREL G HAGEN
PO BOX 32
TENDON ID 83467

JEFFREY JAMES HAIRE
319 PALOS VERDES BLVD UNIT 411
REDONDO BEACH CA 90277

MARTIN W HALPERN
PO BOX 128
ELLIS ID 83235

HALLI AND RUSSELL HAMILTON
PO BOX 144
CHALLIS ID 83226

BESSIE I AND WILLIAM L HAMMOND AND HAMMOND
FAMILY CORP
HC 63 BOX 1544
CHALLIS ID 83226

CLIFF M HANSEN
3300 HOTSPRINGS RD
CHALLIS ID 83226

C L AND MATTIE HANSEN
HC 64 BOX 9910
STANLEY ID 83278

CLAYNE A HANSON
679 N 3837 E
RIGBY ID 83442

PATRICK C HARDING
PO BOX 180
CLAYTON ID 83227

DONNA M AND RICHARD L HARRIMAN
PO BOX 1279
CHALLIS ID 83226

MINNIE L HARRIS
1904 E MAIN
SALMON ID 83467

VAUGHN HARTMAN
PO BOX 4
LEADORE ID 83464

LUTHER B HARTSHORN
PO BOX 507
CHALLIS ID 83226

HATCH LIVESTOCK AND RALPH AND RUTH HATCH
434 PAHSIMEROI RD
ELLIS ID 83235-2002

JUDY B AND LENARD A HATCH
144 HIGHWAY 28
SALMON ID 83467

WILLIAM L HATCH
PO BOX 2030
MAY ID 83253

BESSIE M AND RAYMOND HATHORN
17 RIVER VISTA LN
SALMON ID 83467

CAROL J AND GRANT M HAVEMANN
3 BOOTS RD
SALMON ID 83467

GERALD D AND PATRICIA M HAWKINS
25490 N HWY 93
CHALLIS ID 83226

TINA WEEKS HAWKINS
5600 MORGAN CREEK RD
CHALLIS ID 83226

JAMES E HAWLEY
PO BOX 1055
SALMON ID 83467

TERESA A HAWLEY
877 HWY 28
SALMON ID 83467

HAYDEN CREEK CATTLE & HORSE GROWERS
C/O KARL W SNYDER
PO BOX 49
LEMHI ID 83465

SCOTT M HAYES
9417 N WINTERWOOD LN
BOISE ID 83714

JOHN M HAYES
2843 TONGASS
KETCHIKAN AK 99901

HAYNES CREEK CATTLE & HORSE ASSN
C/O ED SNOOK
1205 HWY 28
SALMON ID 83467

HEADWATERS RANCH
C/O CARTER MAC NICHOL
1140 SW 11TH STE 500
PORTLAND OR 97205

HEART OF IDAHO ANIMAL SANCTUARY
PO BOX 175
CHALLIS ID 83226

LINDA B AND TERRENCE C HEATON
102 HWY 28
SALMON ID 83467

CARL C AND LINDA HECKENDORF
2345 N SHIELDS ST
FORT COLLINS CO 80524

HECLA LTD
GROUSE CREEK PROJECT
PO BOX 647
CHALLIS ID 83226

HECLA MINING CO
PO BOX 647
CHALLIS ID 83226-0647

JULANA HEDT AND PAUL O HEDT JR
PO BOX 392
MIDDLETON ID 83644

BEVERLY KIRKHAM HEINZ
5529 COTTONWOOD CLUB DR
SALT LAKE CITY UT 84117

ALAN AND HARRIET HENDERSON
PO BOX 645
CHALLIS ID 83226

JANE AND ROGER HENRY
5665 S 5TH W
IDAHO FALLS ID 83404

MATTHEW J AND NICOLE CHERIE HERBEK
1307 BRYAN
SALMON ID 83467

JANNA LYNN AND STEVEN R HERBST AND NELSON FAMILY
CO LTD
74 LEMHI RD
SALMON ID 83467

AUBREE B AND EMIL L HERBST
PO BOX 44
TENDON ID 83468

LYNN, LYNN A, ROBIN AND ROBIN R HERBST
26 PINE CREEK RANCH RD
SALMON ID 83467

HERMITS OF MOUNT CARMEL IDAHO INC
PO BOX 37
LEMHI ID 83465

IRVIN B HEROD
1551 SONOMA AVE
SEASIDE CA 93955

GERALD D AND KATHRYN S HERRICK
C/O TRACEY KEHNE
2209 S CROSSCREEK LN
BOISE ID 83706

ANDREW A HESS
PO BOX 1340
CHALLIS ID 83226

LOUANNE HESS
1211 CUSTER RD
ELLIS ID 83235

CHARLES L AND PATRICIA HIATT
3655 SUNNYSIDE RD
AMMON ID 83406

WHITNEY R HICKEY
16 STRAWBERRY LN
SALMON ID 83467

JOHN E AND REBECCA J HILGENDORF
9902 SIDOROF LN
ANCHORAGE AK 99507

ANN P AND PAUL D HILL
975 WALKER AVE
ASHLAND OR 97520

ANN P AND PAUL D HILL
PO BOX 281
STANLEY ID 83278

RONALD G YACOMELLA AND SANDRA K HILL
PO BOX 29
CHALLIS ID 83226

HILL MOORE REVOCABLE TRUST
SANDRA K HILL TRUSTEE
PO BOX 730
CHALLIS ID 83226

JOHN AND MELANIE HOECK
PO BOX 94
TENDON ID 83468

ROY M HOFFMAN JR
12631 CUSTER RD
MAY ID 83253

GREGORY A HOGAN
PO BOX 1795
KETCHUM ID 83340

ALPHONSE L AND CLARICE C HOKANSON
PO BOX 596
SALMON ID 83467

DARLENE S AND DEE R HOLLAND
PO BOX 23
TENDON ID 83468

JOHN AND ROZ HOLLEY
PO BOX 113
STANLEY ID 83278

JOSHUA HOLLOWAY AND MORGAN KING
2046 BETH ST
POCATELLO ID 83201

CHARLENE HOLSCHER-TOMCHAK
580 CRIMSON DR
IDAHO FALLS ID 83401

CHARLENE HOLSCHER-TOMCHAK
580 CRIMSON DR
IDAHO FALLS ID 83401

DIANE HOURIHAN
PO BOX 830
CHALLIS ID 83226

SUSAN AND WILLIAM HUDSON
4105 N SHATTO LN
BOISE ID 83703

EDWARD WAYNE AND JULIA MARIE HUGHES
11681 LEONIDAS HORTON RD
CONROE TX 77304

DONNA LENOR HUGHES
25521 N HWY 93
CHALLIS ID 83226

LYNN D AND NELL HUGHES
555 PIVA RD
CHALLIS ID 83226

RYAN BLAINE AND SUSANA HUGHES
HC 61 BOX 3054
CHALLIS ID 83226

DAVE AND MARCY HULL
19 SUNNY LN
SALMON ID 83467

W MICHAEL HUMPHREYS
HUMPHREYS FAMILY LTD PARTNERSHIP AND H HOOK LLC
636 IVY LN
SAN ANTONIO TX 78209

RYAN N HUNT
PO BOX 719
CHALLIS ID 83226

GLENDON H HUNT
HC 61 BOX 3021
CHALLIS ID 83226

JOEL REA AND MARLA HUNTEMAN
10 KARLA DR
PO BOX 576
SALMON ID 83467

CURT AND KRIS HURLESS
PO BOX 4018
MC CALL ID 83638

BERNADINE AND CLAYTON HURLESS
HC 67 BOX 556
CLAYTON ID 83227

DANA C HURLESS
HC 67 BOX 621
CLAYTON ID 83227

GREGORY S AND PEGGY HURLESS AND MURIEL M AND
RONALD A REMBELSKI
4000 CHALLIS CREEK RD
CHALLIS ID 83226

MARK A HURLEY
5470 N COLLISTER DR
BOISE ID 83703-3810

MARK A HURLEY
PO BOX 70
TENDON ID 83468-0070

MARGARET HUTCHENS
HC 67 BOX 2088
CHALLIS ID 83226

RALPH W HUTCHISON
500 HUTCHISON LANE
CHALLIS ID 83226

KENNETH H AND PATRICIA M HYATT
PO BOX 753
CHALLIS ID 83226

IDAHO POWER CO
C/O JON BOWLING
PO BOX 70
BOISE ID 83707

DEBRA A AND JOHN N INFANGER
1821 S 1800 E
GOODING ID 83330

RAY E AND VERA S INFANGER
9 MOUNTAIN LEGEND LN
SALMON ID 83467-5165

GARY AND JACKIE INGRAM
HC 68 BOX 320
CLAYTON ID 83227

BARBARA J AND PHILLIP N INGWERSEN
HC 67 BOX 2053
CHALLIS ID 83226

INTERMOUNTAIN LUTHERAN CAMP ASSOC
C/O LUTHER HEIGHTS CAMP
ALTURAS LAKE
HC 64 BOX 9381
KETCHUM ID 83340

J R SIMPLOT CO
C/O DAVID SPURLING OR VIC CONRAD
1099 W FRONT ST
PO BOX 27
BOISE ID 83707-0027

DEAN ROBERT AND PEGGY J JACKSON
50 SUMMER MEADOW LANE
SALMON ID 83467

DARCY M AND PHILIP JACKSON
268 HWY 28
SALMON ID 83467

SAM JACKSON
RT 1 BOX 919
MOORE ID 83255

ANTHONY AND STACEY S JAMES
1438 HWY 28
SALMON ID 83467

JAMES D CAROTA TRUST
PO BOX 1909
WILMINGTON DE 19899

BONNIE AND LON THOMAS JARVIS
4403 WILDHORSE CREEK
MACKAY ID 83251

JEFFREY J BOCKMON & KELLY A BOCKMON REVOCABLE
FAMILY TRUST
18501 E COMSTOCK RD
LINDEN CA 95236

BERT W AND RIKKA J JEFFRIES
299 GEERTSON CREEK RD
SALMON ID 83467

MELBOURNE H JENSEN
2615 FALLS AVE E
TWIN FALLS ID 83301

LEANN JENSEN
1420 CASH AVE
PAHRUMP NV 89048

BRADLEY N JENSEN
365 S 1300 W
PINGREE ID 83262

RINALDO E JENSON
1712 LEMHI RD
SALMON ID 83467

GARY R AND JOAN JENSON AND HOLLY A AND RICHARD M
NATELSON
55 THREE MILE LN
SALMON ID 83467

JACQUE L AND JOSEPH M JIMENEZ
8921 SUNSET TRAIL
PASCO WA 99301

JOHN G ANDERSEN LIVING TRUST
40547 ORANGELAWN
PLYMOUTH MI 48170

TAIT P JOHNSON
905 ORCHID POINT WAY
VERO BEACH FL 32963

LINDA J AND THOMAS E JOHNSON
84 LARIAT LN
CHALLIS ID 83226

ESTHER J AND ZACH A JOHNSON
12660 W BERGHAN ST
BOISE ID 83709

AARON F, AL, ALLEN F, JAMIN K AND VIRGINIA M RUGGLES,
SUSAN AND STEVEN L JOHNSON
1019 LEE CREEK RD
LEADORE ID 83464

DOUGLAS JOST AND STEPHANIE A JOHNSON-JOST
448 FERNANDO
PALO ALTO CA 94306

E DALE JOLLEY
650 LEMHI RD
SALMON ID 83467

E DALE AND MILDRED H JOLLEY
646 LEMHI RD
SALMON ID 83467

CORINNE AND RONALD T JONES
25491 N. HWY 93
CHALLIS ID 83226

PHYLLIS M AND ROBERT M JONES
PO BOX 28
LEMHI ID 83465

DORIS AND IVAN L JONES
1463 ELSIE DR
MURRAY UT 84123-5366

DAVID AND LEANN JONES
185 QUINCY
TWIN FALLS ID 83301

CHERYL AND LLOYD JONES
107 CEMETARY LN
SALMON ID 83467

RUSSELL E JONES
2409 ROCKEDEL ST
LA CRESCENTA CA 91214

TUDDIE AND VERL JONES
1335 MORGAN CREEK RD
CHALLIS ID 83226

JOHN F AND VERNA M JONES
PO BOX 1252
CHALLIS ID 83226

JONES INVESTMENT CO LLC AND NIECE SMILEY CREEK LLC
344 W PLEASANT VIEW DR
OGDEN UT 84414

KATHLEEN A AND RICHARD L JORDAN
PO BOX 44356
BOISE ID 83711

CLARK L AND SANDRA RAU JORDAN
PO BOX 1015
SALMON ID 83467

FAITH JORDAN AND WILLIAM J MILLER
PO BOX 674
SALMON ID 83467

JOSE DITCH CO INC
PO BOX 274
CHALLIS ID 83226

CAROL J MENDIOLA AND GRACE A JOSLYN
1050 PARK HILL DR
BOISE ID 83702

SPENCER A JOSLYN
3213 N 39TH ST
BOISE ID 83703

EUGENE AND JANIS JUD
13765 HARDING AVE
SAN MARTIN CA 95046

ANITA L JULIAN
HC 68 BOX 355
CLAYTON ID 83227

K F & LILLIAN B MORGAN REVOCABLE TRUST
710 FILMORE ST
AMERICAN FALLS ID 83211

RAY L KAGEL JR
3879 E 200 N
RIGBY ID 83442

JOHN AND LENORE KATRI
5870 S 45TH W
IDAHO FALLS ID 83402

COLLEEN AND FORREST R KEIRNES
PO BOX 371
SALMON ID 83467

DEE M KEIRNES
523 MAIN ST
SALMON ID 83467

HUGH L AND PATRICIA KEITH
92 HWY 28
SALMON ID 83467

JUSTIN AND KATELYNN KELLER
180 MEADOW RD
CHALLIS ID 83226

DENISE M KELLER
PO BOX 65
LEADORE ID 83464

JANADEEN KELLER
26 SUMMER MEADOW LANE
SALMON ID 93467

CRAIG L KEMMERER
HC 63 BOX 1530
CHALLIS ID 83226

SHERI E KEMMERER
HC 63 BOC 1530
CHALLIS ID 83226

KENT & KATHRYN BROWNING FAMILY TRUST
PO BOX 367
18803 STUDEBAKER RD
CERRITOS CA 90703

RAYMOND JOHN AND ROBIN KAY KEPPNER
PO BOX 1093
CHALLIS ID 83226

JOSEPH AND LYNND A KERCHINSKI
100 HOOPER LN
MAY ID 83253

KIM AND SCOTT W KESL
PO BOX 33
TENDON ID 83468

KETCHUM LONG ISLAND LLC
PO BOX 2238
KETCHUM ID 83340

HEATHER, MICHAEL, SCOTT AND SHAYNE WHITSON AND
JANET KIBBEE
21 STARGAZER TRAIL
SALMON ID 83467

JANET KIBBEE
3927 E 400 N
RIGBY ID 83442

GARY AND SANDRA M KIMBLE
PO BOX 376
CHALLIS ID 83226

WINFREY K KIMBLE
PO BOX 568
CHALLIS ID 83226

DAVID O KINGSTON
477 SHOUP AVE #207
IDAHO FALLS ID 83402

CAROLE KLEIN
HC 67 BOX 313
STANLEY ID 83278

KIRK AND TINA KLEMMER
PO BOX 122
SALMON ID 83467

KLT FOUNDATION, KRISTINE D TYLER AND LEADORE LAND
PARTNERS LP
PO BOX 16025
MISSOULA MT 59808

ANDREW M AND KATHLEEN M KNIGHT
PO BOX 71
LEMHI ID 83465

FAYE AND JERRY W KNOX
PO BOX 301
CHALLIS ID 83226

LAWANA G AND WILLIAM L KNOX
23190 HWY 74
CHALLIS ID 83226

KENT K KOEPPEN
PO BOX 7
CHALLIS ID 83226

KARIN AND MICHAEL J KOHL
210 GEERTSON CREEK RD
SALMON ID 83467

ALICE C AND JOE F KOLMAN
56 N BAKER RD
SALMON ID 83467

AUSTIN JAMES KONCZ
PO BOX 1372
SALMON ID 83467

GALEN J AND NORMA F KOSSLER
8 KOSSLER LN
SALMON ID 83467-5219

CATHERINE A AND LAWRENCE J KRATZ
5352 W BUCKSKIN
POCATELLO ID 83201

THOMAS K KREEGER
HC 67 PO BOX 193
CLAYTON ID 83227

JAMES R AND SONDRAS KREFT
5120 FOSTER RD
PARADISE CA 95969-6221

L & W STONE CORP
2030 MAIN ST STE 1600
IRVINE CA 92614-7257

ETHEL A AND LEONARD E LA PIERRE
RT 1 BOX 79
SALMON ID 83467

MELISSA SARTOR AND RANDY LAMBETH
3 CREWS RD
SALMON ID 83467

BRADLEY G AND HETHER LS LAMBSON
PO BOX 710
CHALLIS ID 83226

BETSI AND CHARLES LAMOURE
65 THREEMILE LN
SALMON ID 83467

PATRICIA LANDRY
PO BOX 1381
SALMON ID 83467-1381

LESLIE LANDRY
PO BOX 1446
PORT ORCHARD WA 98366

ANN M AND MICHAEL B LANE
286 LEMHI RD
SALMON ID 83467

JOHN W R LANGERMANN
6 ASH PL
CAMBRIDGE MA 02138

CHARLIE AND CONI LANSCHKE
PO BOX 433
OAKLEY UT 84055

KATHLEEN LATIMER
565 BURSTEDT LN
ELLIS ID 83235

ALLICYN AND JACK LATIMER
HC 61 BOX 3029
CHALLIS ID 83226

HAROLD AND RUTH LEATON
PO BOX 589
DOUGLAS WY 82633-0589

PATRICK W LEE
C/O JOHN T BROWN
PO BOX 61
SUN VALLEY ID 83353

THOMAS LEIPHART
17 S HAWK RD
SALMON ID 83467

LEMHI HYDROPOWER CO
5203 S 11TH E
IDAHO FALLS ID 83404

LEMHI REGIONAL LAND TRUST INC
PO BOX 871
SALMON ID 83467

LEMHI RIVER ESTATES
C/O WINFRED DUDLEY
PO BOX 1
TENDON ID 83468

LEMHI RIVER ESTATES SUBDIVISION
PO BOX 37
TENDROY ID 83468

CATHY AND ROBERT LETH
939 HWY 93 S
SALMON ID 83467

GARY LEUZINGER
23 OLIVER DR
SALMON ID 83467

TIMOTHY LEUZINGER
BOX 157
CHALLIS ID 83226

DOYLE AND JUDI LEUZINGER
23222 HWY 75
CHALLIS ID 83226

MADI LEVINSON
4503 HOOVER
BOISE ID 83705

DAVID, JAN, JEFFREY AND LAYNE PARMENTER AND
MICHELLE LIDDIARD
139 CEMETERY LN
SALMON ID 83467

LILAC SIX LLC
C/O JOAN MARTINKO MGR
1118 S BRADDOCK AVE (REAR)
PITTSBURGH PA 15218

BRENDA AND DENNIS LILE
PO BOX 793
SALMON ID 83467

MARCY T MORGAN AND ROBERT PAUL LIND
HC 67 BOX 2060
CHALLIS ID 83226

NANCY A AND ROBERT E LINDSTROM
854 LEMHI RD
SALMON ID 83467

DEBBIE LYNN AND WILLIAM FLOYD LINGER
PO BOX 51
TENDROY ID 83468

LINGER DISTRIBUTING INC
175 HWY 28
SALMON ID 83467-5336

NANCY C LISCHNER
33 LEMHI RD
SALMON ID 83467

JERRY D SMITH AND MARIANNE LITTLE
PO BOX 40
TENDROY ID 83468

CONNIE L AND SHAWN P LIVINGSTON
15 LEMHI BACK RD
SALMON ID 83467

ANNA F AND KEVIN L LLOYD
660 ROD & GUN CLUB LP
CHALLIS ID 83226

JAMES W LOCKES
C/O BONNIE LOCKES
3770 LEMHI RD
LEADORE ID 83464

BONNIE E LOCKES
3770 LEMHI RD
LEADORE ID 83464

NICOLE J AND R TERRY LOFT
167 WIMPEY CREEK RD
SALMON ID 83467

RALPH G LOGAN
C/O KATHLEEN A JORDAN
7187 HAPPY VALLEY RD
KUNA ID 83634

MILDRED I LOGAN
48 RED ROCK STAGE RD
SALMON ID 83467

DANIEL AND DARCY LOHMILLER
637 COULEE DR
BOZEMAN MT 59718

HARRY G AND RAYLENE LOMONACO
10 BAIRD LN
SALMON ID 83467-5023

KATHY A AND KENT A LOMONT
278 SANDY CREEK RD
SALMON ID 83467

JANICE AND STEVEN G LONG
PO BOX 981
CHALLIS ID 83226

LONG CREEK MINING CO
26 W DRY CREEK CIR STE 810
LITTLETON CO 80112

ANN L AND ROBERT R LOUCKS
260 WITHINGTON CREEK RD
SALMON ID 83467

JO ANN AND WILLIAM E LOUDY
PO BOX 68
TENDON ID 83468

LOUJA WEST LLC
C/O LOUIS APPIGNANI
1643 BRICKELL AVE STE 3805
MIAMI FL 33129

LAVON D LOYND
HC 67 BOX 2097
CHALLIS ID 83226

JEFFREY AND LINDA LUBECK
35 COPPER CREEK RD
HAILEY ID 83333

GORDON LUCAS
PO BOX 1209
SALMON ID 83467

CARL J AND ROBIN S LUFKIN
1413 HWY 28
SALMON ID 83467

ARTHUR AND BETTY RUSTIN LUSHER
PO BOX 349
CHALLIS ID 83226

DIANE K AND JAMES A LYON
PO BOX 15
TENDON ID 83468

BARBARA J AND RICHARD E MAC MILLEN
705 FOSS RD
TALENT OR 97540

HEATHER KATHERINE MACK
PO BOX 597
MOUNTAIN HOME ID 83647

JUDITH MADSEN
248 PAHSIMEROI RD
ELLIS ID 83235

GARY MADSEN
48 OUTFITTER LN
MAY ID 83253

KENNY MADSEN
PO BOX 25
ELLIS ID 83235

MAHAFFEY BROTHERS, VELMA MAHAFFEY AND VELMA
MARIE MAHAFFEY IRREVOCABLE TRUST
PO BOX 14
LEMHI ID 83465

JUNE PLAYFAIR AND MARIE MAHAFFEY
PO BOX 38
LEMHI ID 83465

J MICHAEL MAHONEY
PO BOX 622
LARKSPUR CA 94977-0662

DANIEL J MAHONEY III
14 BERESFORD CT
BLOOMFIELD HILLS MI 48304

FRANK MAJKA
PO BOX 81
LEMHI ID 83465

CHARLES AND DIANE MAJOR
8 HOKANSON LN
SALMON ID 83467

JAMES C, MARYNEL G AND TIFFANY ANN MALCOM
10 BEEHIVE LN
SALMON ID 83467

HELEN P AND TED L MALONE
HC 63 BOX 1749
CHALLIS ID 83226

MICHAEL M AND PATRICIA A MALONEY
PO BOX 108
CLAYTON ID 83227

BETTY L AND FRANK MARAFFIO
PO BOX 713
CHALLIS ID 83226

MARCIA DECANN ANDERSEN REVOCABLE TRUST
2 N HAWK RD
SALMON ID 83467

DOUGLAS MARSHAK
9360 NW OLD SKYLINE BLVD
PORTLAND OR 97231

GAY MIREMONT AND GEORGE S MARTIN
PO BOX 4229
HAILEY ID 83333

JANICE AND ROMALDO MARTIN
1192 FALLON RD
HOLLISTER CA 95023

SUSAN MARTINEZ
PO BOX 22
TENDRY ID 83468

ALFONSO MARTINEZ
PO BOX 22
TENDRY ID 83468

GILMAN AND JIM MARTINY
159 HOOPER LN
MAY ID 83253

LINDA R MARTINY
7878 WILDE RD
CONCRETE WA 98237

VIRGINIA K MARTINY
99 HOOPER LN
MAY ID 83253

PEGGY L MARTINY
667 N BIRCH CREEK RD
CORVALLIS MT 59828

LISA MARTINY
83 HOOPER LN
MAY ID 83253

JONATHAN H MARVEL
PO BOX 1602
HAILEY ID 83333

MARY ANN BEASLEY REVOCABLE TRUST
267 HWY 28
SALMON ID 83467

JACQUELINE A AND WILLIAM A MATTHEWS
PO BOX 116
CHALLIS ID 83226

PAUL W AND RUTH N MATUSKY
6 PARADISE CT
HANOVER PA 17331

GRANT D MAURER
176 RED ROCK STAGE RD
SALMON ID 83467-5201

PAUL L AND SHARON L MAY
PO BOX 192
CLAYTON ID 83227

SHANE R MC AFEE
PO BOX 2008
SALMON ID 83467

DAVID M AND GAYLE N MC CAMPBELL
3 NICOLE LN
SALMON ID 83467

PATRICK D MC CONNAGHY
373 SANDY CR LN
SALMON ID 83467

BRUCE AND GLENDA MC CONNELL
100 COTTOM LN
LEADORE ID 83464

DAVID S AND RAINY S MC DONALD
PO BOX 5
KETCHUM ID 83340

LARRY L AND PHYLLIS W MC DOWELL
HC 67 BOX 2030
CHALLIS ID 83226

GINA C MC FARLAND
319 N ST CHARLES
SALMON ID 83467

MC FARLAND LIVESTOCK CO INC
C/O TEX J KAUER
PO BOX 50
LEMHI ID 83465

F PAULINE MC GEE
PO BOX 223
SALMON ID 83467

MICHELLE MC GINLEY
HC 68 BOX 328
CLAYTON ID 83227

RUBY H AND VERNE A MC GOWAN
PO BOX 852
CHALLIS ID 83226

BECKY J AND THOMAS V MC GOWAN
PO BOX 1040
CHALLIS ID 83226

ELBERTA B AND KELLY MC KEAN
3730 CATALPA DR
BOISE ID 83703

NANCY B WHITE AND WILLIAM H MC KEE
PO BOX 940
CHALLIS ID 83226

WHIT AND JUNE M MC KINNEY
PO BOX 39
LEMHI ID 83465-0039

BARBARA AND SAM P MC KINNEY
PO BOX 52
LEMHI ID 83465

JESSICA K AND TERRY A MC NELLIS
TERRY & JESSICA MC NELLIS FAMILY TRUST
PO BOX 834
RANCHO SANTA FE CA 92029

TERRY A MC NELLIS
PO BOX 4
LEMHI ID 83465

MARJORIE E MC REA
PO BOX 121
LEADORE ID 83464

JOHN T MEARS
PO BOX 606
COLBERT WA 99055-0600

STACY A AND WESLEY J MECHAM
PO BOX 125
CHALLIS ID 83326

JULIE I MEISSNER AND PATRICK RUSSELL
PO BOX 11
STANLEY ID 83278

VICTORIA MELTON
10 BANTA DR
SALMON ID 83467

STEFANI MELVIN
35 N BAKER RD
SALMON ID 83467

GARRY D MERRITT
PO BOX 1516
SALMON ID 83467

JUDITH AND KEVIN MEYER
3 LUNAR LNDG
FORT DAVIS TX 79734

JERRY R MEYERS
254 FOURTH OF JULY CREEK RD
NORTH FORK ID 83466

CATHERINE AND DON MICKELSEN
1260 TWIN BUTTE RD
MENAN ID 83434

GEORGE MILLER
50 P MILLER RD
MAY ID 83253

PATRICIA M AND RYAN MILLER
PO BOX 44
SALMON ID 83467

DONALD E MILLER
228 MEADOW LARK LN
HAMILTON MT 59840-9147

M MAE MILLER
C/O LINDA MATTHEWS & JEANNE VARILONE
210 N LEMHI RD
SALMON ID 83467-4527

JOHN AND RUBY MILLER
176 RED ROCK STAGE RD
SALMON ID 83467

BEVERLY SCHUPP AND MARCUS R MILLER
PO BOX 1218
HAINES AK 99827

DELOY AND NELDA MILLER
RT 1 BOX 19
SALMON ID 83467

BETHANY R AND RYAN E MILLICK
PO BOX 1091
CHALLIS ID 83226

BOB AND JANE MINOR
1135 HWY 28
SALMON ID 83467

JAMES B AND MARY J MITCHELL
PO BOX 380
STANLEY ID 83278

AJ AND TONIA S MITCHELL
PO BOX 766
CHALLIS ID 83226

WILLIAM W MITCHELL
PO BOX 69
TENDRY ID 83468

DALE MIZER
PO BOX 728
HAILEY ID 83333

MJB REVOCABLE TRUST
1050 N BRIAR LN
BOISE ID 83712

MOEN RANCH LLC
C/O KENT MOEN OR MARTY MOEN
42 MEON DR
MAY ID 83253

RUTH ANN MONSON
2303 BELMONT
IDAHO FALLS ID 83404

EUGENE DURELL MOON
677 GREENBRIER DR
HEYBURN ID 83336

BRIDGET AND DONNIE G MOORE
PO BOX 522
CHALLIS ID 83226

MORGAN CREEK CATTLE ASSN
C/O DELBERT HUGHES
HC 61 BOX 3054
CHALLIS ID 83226

GERALD R AND ROSE H MORPHEY
PO BOX 625
SALMON ID 83467-0625

NEAL H MORRISON
PO BOX 165
TWIN FALLS ID 83303

NEAL H MORRISON
PO BOX 165
TWIN FALLS ID 83303

JAMES A MOUNT
379 W 200 N
BLACKFOOT ID 83221

MOUNTAIN SPRINGS RANCH
5550 BARTON FLAT RD
MACKAY ID 83251

DANIEL J MUDD
48 BEEHIVE LN
SALMON ID 83467

BRENT W MULKEY
1008 HWY 28
SALMON ID 83467-5303

DOYLE L AND LOAH K MULKEY
25 MULKEY LN
SALMON ID 83467

HERBERT W MUMFORD III AND M VICTORIA MUMFORD
PO BOX 402
STANLEY ID 83278

CARLA R AND NICHOLAS A MUNNING
23 N BAKER RD
SALMON ID 83467

A H MUNSON
HC 63 BOX 1757
CHALLIS ID 83226

BROOKS, CYNTHIA AND DEAN MURPHY
PO BOX 1089
SALMON ID 83467

CYNTHIA MURPHY
10618 BROWDER
GARDENDALE TX 79758

DAVID AND LISA MUSCAVAGE
PO BOX 95
STANLEY ID 83278

GINGER L MYERS
PO BOX 88
TENDRY ID 83468

MYLA R AND WILLIAM M NALLION
HC 63 BOX 1812
CHALLIS ID 83226

RAYMOND E AND STELLA R NANCOLAS
195 N HIGBEE AVE #2
IDAHO FALLS ID 83401

NANCY ARLENE KELLY REVOCABLE TRUST
PO BOX 4474
KETCHUM ID 83340

MARCY A AND WILLIAM E NEAL
13 S BAKER RD
SALMON ID 83467

SUZANNE NEBEKER
51 N BAKER RD
SALMON ID 83467

JOSEPH AND MARGARET S NEBEKER
PO BOX 598
SALMON ID 83467

ARLENE LYNN AND PETE LEGRANDE NELSON
HC 61 BOX 3025
CHALLIS ID 83226

PETE L AND SHILEY L NELSON
PO BOX 563
CHALLIS ID 83226

CLYDE S AND RUBY M NELSON AND THE NELSON FAMILY CO
LTD
152 LEMHI RD
SALMON ID 83467

JOAN R NELSON
PO BOX 266
WISDOM MT 59767

GARY A NICHOLS
PO BOX 898
SALMON ID 83467

DIANE C AND JULIAN O NICHOLSON
PO BOX 5378
TWIN FALLS ID 83301

DANIEL T SURMELIS AND RHEA NICK
9200 W CARIBOU RD
POCATELLO ID 83204

MARK T AND PATRICIA A NICKUM
PO BOX 1565
HAILEY ID 83333

JACK AND RUTH V NIECE
PO BOX 45
STANLEY ID 83278

NIRVANA SPRINGS LLC
C/O HECHT FAMILY OFFICE
1114 STATE ST STE 310
SANTA BARBARA CA 93101

DICK P AND NANCY LEE NOGUES
PO BOX 536
CHALLIS ID 83226

BETTY J AND MICHAEL A NOONAN
7 BURSTEDT LN
ELLIS ID 83235

DALEEN AND MICHAEL DEAN NOONER
885 HWY 28
SALMON ID 83467

MARK AND SONYA J NOREM
PO BOX 1285
BIG TIMBER MT 59011

JAY P AND LINDA M NORRIS
12254 N KENSINGTON AVE
HAYDEN LAKE ID 83835-7580

NORTHWEST FIDELITY TRUST
PO BOX 133
MAY ID 83253

JERI J AND KENNETH J NUTT
9525 E GLORIA RD
MIDDLETON ID 83644-5045

JAMES J AND LISA O BRIEN
704 THOMPSON CREEK WAY
CLAYTON ID 83227

JOHN AND PATRICIA O CONNOR
3102 E HILERY DR
PHOENIX AZ 85032

GARY AND SARI O MALLEY
PO BOX 123
STANLEY ID 83278

DEBBIE A AND TED L O NEAL
11 ONEAL LN
MAY ID 83253

LYNETTE A AND MERLE J O NEAL
32 FALLS CREEK LN
MAY ID 83253

DAVID JEFFREY ODELL
2742 ALPENGLOW RD
STEVENSVILLE MT 59870

CHARLES G OEDING
1706 SHOUP ST
SALMON ID 83467-4501

PAIGE OEDING
PO BOX 626
SALMON ID 83467

JOLENE AND MARSHALL D OGDEN
HC 67 BOX 550
CLAYTON ID 83227

BILLIE JO AND TROY OLSON
10745 CUSTER RD
MAY ID 83253

KATHLEEN, V DON AND VERGIL DON OLSON
479 LEMHI RD
SALMON ID 83467

HEATHER OLSON AND ROBERT OLSON JR
2 PEAK VIEW DRIVE
SALMON ID 83467

VERGIL O OLSON
536 LEMHI RD
SALMON ID 83467

VALERIE AND VERDELL A OLSON
151 GEERTSON CREEK RD
SALMON ID 83467

KIMBERLY AND MARK OLSON
74 DEMICK LN
SALMON ID 83467

DALLAS AND SHIRLEY OLSON
28 DEMICK LN
SALMON ID 83467

ALMA MARIE OSBORN
2439 N BIRCHGROVE LN
BOISE ID 83703

GINO AND NANCY OTTONELLO
1051 LEMHI RD
SALMON ID 83467

GREGORY G PAINTER
559 HWY 28
SALMON ID 83467

GREGORY G AND KATHRYN C PAINTER
9 NICOLLE LN
SALMON ID 83467

BUDDY ROSS AND LISA MARIE PAKUER
PO BOX 46
TENDON ID 83468

PANCHERI BROTHERS LLC
1494 HWY 33
HOWE ID 83244

HELEN MAHONEY PARDOE
1076 LAKE AVE
GREENWICH CT 06831

REBECCA J PARKINSON
1621 N PROMONTORY RD
BOISE ID 83702

DOUG J AND JANIEL S PARKINSON
PARKINSON FOUNDATION SEED FARM AND D & J HOLDINGS
LLC
PO BOX 67
ELLIS ID 83235

RICK C PARKS
2292 E SEWINDER DR
MERIDIAN ID 83646-5476

ALISA AND MORGAN PEETS
522 RIVER ST
SALMON ID 83467

BARBARA A PEETS
282 WITHINGTON CREEK RD
SALMON ID 83467

DAN T AND LOIS M PENCE
179 COSGROVE LN
DILLON MT 59725-8871

JAMES K PENINGER
PO BOX 781
CHALLIS ID 83226

SUSAN P PERIN
PO BOX 480
SUN VALLEY ID 83353-2338

CHARLES P AND KATHY A PERRY
2388 BRANDON CT
IDAHO FALLS ID 83402

JAMES R PETERS
605 BRD RUN RD
WEST CHESTER PA 19382

JAMES R PETERS
605 BRD RUN RD
WEST CHESTER PA 19382

PETERSEN RANCH TRUST
C/O GARY PETERSEN
207 PAINTED HILLS DR
IVINS UT 84738

JOEL AND SABRINA PETERSON
2862 CHALLIS CREEK RD
CHALLIS ID 83226

DOROTHY J PETERSON
PO BOX 24
LEMHI ID 83465

HARVEY E, JANETTE S AND KENNETH J PETERSON
PO BOX 58
LEADORE ID 83464

DALE A PETERSON
PO BOX 67
LEADORE ID 83464

JOHN T AND TONI L PETERSON
1537 HWY 28
SALMON ID 83467

PETERSON LAND & LIVESTOCK INC
PO BOX 85
LEADORE ID 83464

ROBERT L AND SUSAN E PETRAY
PO BOX 76
TENDROY ID 83468

A KENT AND PAULA K PHARIS
4 DELOREAN WAY
SALMON ID 83467-5204

ELIZABETH N AND GEORGE F PHILLIPS
11869 N HIGH NOON CT
RATHDRUM ID 83858

MARK L AND ALTA H PHILLIPS
607 E CONFEDERATE
SALMON ID 83467

CHERYL PHILPS
25033 N HWY 93
CHALLIS ID 83226

SAM PIAZZA
206 COURTHOUSE DR
SALMON ID 83467-3900

DAVID R PINGREE
1171 CHANDLER DR
SALT LAKE CITY UT 84103

MICHAEL PIVA
PO BOX 308
STANLEY ID 83278

KAY A AND ROBERT A PIVA
24950 HWY 93 N
CHALLIS ID 83226

JOHN AND KATHY PIVA
PO BOX 1219
CHALLIS ID 83226

JULIAN AND MARION PIVA
PO BOX 94
CHALLIS ID 83226

KAREN PORTER AND ROBERT J PORTER II
1346 CANDLERIDGE DR
BOISE ID 83712

JAMES AND KAREN POSADA
35 MEADOW CREEK
MAY ID 83253

MICHAEL A AND TERESA POSTEL
PO BOX 35
LEMHI ID 83465

PRATT CREEK RANCH LP
178 PRATT CREEK RD
SALMON ID 83467

ALLAN AND KARLA PROBST
1748 LEMHI RD
SALMON ID 83467

RICK AND SANDY PRUETT
545 HWY 28
SALMON ID 83467

ALLAN F AND BETTY M PURCELL
98 PURCELL RD
LEADORE ID 83464

KERRY W PURCELL
PO BOX 45
LEADORE ID 83464

QB CORP
C/O DICK SMITH
1420 HWY 28
SALMON ID 83467-5333

LOUIS F RACINE JR
PO BOX 1391
POCATELLO ID 83204

STEVE RANKIN
PO BOX 1114
CHALLIS ID 83226-1114

RAY FAMILY TRUST
1545 ST MARKS PLAZA # 4
STOCKTON CA 95207

MARYLU RAYMOND
615 LEMHI RD
SALMON ID 83467

JOSEPHINE AND PAUL RECKINGER
21 CLARK DR
SALMON ID 83467

REDFISH LAKE LODGE INC
C/O JACK SEE
PO BOX 9
STANLEY ID 83278

DARLA D AND ODEEN K REDMAN
PO BOX 22
ALBION ID 83311

ANDREA L AND DAVID E REEDER
PO BOX 1128
CHALLIS ID 83226

CECELIA AND GARY REGNANI
1101 TAFT AVE
SALMON ID 83467

COREY A AND SARAH B REGNANI
PO BOX 686
WILLIAMS CA 95987

WILLIAM A REID
HC 68 BOX 315
CLAYTON ID 83227

LANI M AND STEPHEN D REMBELSKI
2483 CHALLIS CREEK RD
CHALLIS ID 83226

CAROL AND JAMES R REYNOLDS
544 LAKE MEAD WAY
EMERALD HILLS CA 94062

JOAN REYNOLDS AND JOHN E SWEET
PO BOX 667
KETCHUM ID 83340

JACQUELINE L AND RAYMOND C REYNOLDS
426 HWY 28
SALMON ID 83467

DAWN AND MIKE J RICHIE
26 HAYNES CREEK RD
SALMON ID 83467

CLYDE O AND LOIS T RIGBY
PO BOX 345
CHALLIS ID 83226

JAMES E RIGGAN
196 WIMPEY CREEK RD
SALMON ID 83467

JAMES BRETT RIGGAN
121 HWY 93 N
SALMON ID 83467-5293

CONNIE RIGGAN
1311 HWY 93 N
SALMON ID 83467

ERIC AND KRIS RINEER
385 W HESSTON ST
KUNA ID 83634

RIVCO LLC
PO BOX 640
SALMON ID 83467

RIVER VALLEY RANCH LLC
C/O STEVEN LAWRENCE
60 JENNIFER LN
ALAMO CA 94507

JEROME C AND MURIEL M ROACH
19 THREE MILE LN
SALMON ID 83467

THOMAS M ROBERTSON
156 2ND AVE W
PO BOX 525
TWIN FALLS ID 83303-0525

KIMBERLY AND WILLIAM R ROBERTSON
770 CHALLIS CREEK RD
CHALLIS ID 83226

ALLEN B ROBINS
430 ROD & GUN CLUB LP
CHALLIS ID 83226

DOUGLAS AND PAMELA L ROBINS
1959 FUREY LANE
MAY ID 83253

B FRANKLIN ROBINSON
C/O JOHN A ROBINSON
4 W HIGHFIELD RD
BALTIMORE MD 21218

ADRIAN RAND, ADRIAN RUSSELL, DOROTHY H, JOEL RAND
AND STACEY ROBISON
503 N 4000 E
RIGBY ID 83442

ROGER W AND SHIRLEY ROCKWELL
1259 HWY 28
SALMON ID 83467

KENNETH J AND WENDY A RODGERS
PO BOX 659
CHALLIS ID 83226-0659

ROGER A BROWNING TRUST
ROGER A BROWNING
360 N BEDFORD DR STE 204
BEVERLY HILLS CA 90210-5157

ROGER K OGDEN ESTATE
1650 E 875 S #A
CLEARFIELD UT 84015

RITA JEAN ROGERS
19766 NORTHEAST 156 PL
WOODINVILLE WA 98077

ROJOEMCO
PO BOX 4
C/O RON SMITH
STANLEY ID 83278

ALINA L ROMANOWSKI
3707 RENO RD NW
WASHINGTON DC 20008-3222

MICKY ROSKELLEY
HC 67 BOX 2051
CHALLIS ID 83226

JOYCE C AND TED J ROTHBAUER
40 CHIMILES TL
NAPA CA 94558

ROUND VALLEY ACRES WATER ASSN INC
PO BOX 941
CHALLIS ID 83226-0941

DENNIS J ROVETTO
PO BOX 820
TROY ID 83871

MICHAEL G AND SANDRA J ROWLES
7491 BEAR CREEK DR
FONTANA CA 92336

CALVIN MARION AND NYLENE KAYE ROWLEY
21 S BARRACKS LN
SALMON ID 83467

KENNETH C RYAN
631 S 7TH ST
POCATELLO ID 83201

S&G CHALLIS LLC
1487 PARKWAY DR
BLACKFOOT ID 83221

SAATHOFF FAMILY TRUST
6310 S 530 E
MURRAY UT 84107-7506

DONALD J AND MARY ANN SABATTE
1560 FOOTHILLS DR
HENDERSON NV 89012

MARTHA MAHONEY SADLER
PO BOX 995
SHELBURNE VT 05482

MAXINE AND WILLIAM N SAGER
61 RED ROCK STAGE RD
SALMON ID 83467

RICK AND TAMI SAGER
985 HWY 28
SALMON ID 83467

BRENDA M AND TRAVIS P SAKELLARIDIS
598 ROD & GUN CLUB LOOP
CHALLIS ID 83226

SALMON FALLS LAND & LIVESTOCK CO INC
MICHAEL J HENSLEE, V.P.
95-A BELL RAPIDS RD
HAGERMAN ID 83332

SALMON INTERMOUNTAIN INC
28 DEMICK LN
SALMON ID 83467-5079

SALMON RIVER EMERGENCY CLINIC INC
PO BOX 129
STANLEY ID 83278

JOSEPH AND MARIE SAMPINO
375 DARLING CREEK RD
CHALLIS ID 83226

GEORGE E SANTEE JR
PO BOX 2341
IDAHO FALLS ID 83403-2341

RICHARD SCOTT SANTOS
695 LEMHI RD
SALMON ID 83467

R MARLENE SANTOS
651 LEMHI RD
SALMON ID 83467

DAVID SANTOS
1085 FULLMER LN
BLACKFOOT ID 83221

KATHRYN S SAVAGE
PO BOX 115
CLAYTON ID 83227

SAWTOOTH INTERPRETIVE & HISTORICAL ASSN
PO BOX 75
STANLEY ID 83278

SAWTOOTH MOUNTAIN RANCH LLC
2725 E TABLE ROCK RD
BOISE ID 83712

SAWTOOTH VALLEY VISTA LLC
1140 SW 11TH AVE STE 500
PORTLAND OR 97205

AMY AND DAVID W SAY
581 HWY 28
SALMON ID 83467

BILLY SCHLUNEGGER
PO BOX 374
HAILEY ID 83333

ROBERT AND SHAWNA SCHNABEL
HC 63 BOX 1750
CHALLIS ID 83226

DORIS I AND RICHARD L SCHNEIDER
PO BOX 103
STANLEY ID 83278

CHRISTINE E AND RICHARD W SCHOWENGERDT
2794 HWY 93 S
SALMON ID 83467-5396

AMANDA SCHRAMM AND CHAD WIPPERMANN
PO BOX 46
LEMHI ID 83465

DANIEL L SCHROEDER AND JOANN E WOLTERS
64 MILLER LN
SALMON ID 83467

RODNEY W SCOTT
PO BOX 566
RUIDOSO NM 88355

GLENN AND KATHY SEABERG
PO BOX 471
SALMON ID 83467

GLENN M AND VICKIE M SEBER
PO BOX 703
LIBBY MT 59923-0703

LAURIE AND THOMAS SECHRIST
106 WADSWORTH AVE
ALBANY GA 31721

GEMMA M AND STEVEN JAMES SEIDEMAN
PO BOX 644
CHALLIS ID 83226-0644

SELF INC
C/O FRANKLIN JACK POWER
3154 S CRABAPPLE LN
BOISE ID 83706-1239

JOHN E SELLS
PO BOX 34
TENDON ID 83468

LAVERNE, MINA LAVERNE AND RICHARD G SESSIONS
10 EAGLE LN
SALMON ID 83467-5450

MICHAEL D SHANNON
C/O NORA KATHLEEN SHANNON-YANO
16525 S FLORIDA AVE
CALDWELL ID 83607

ANNE SHANNON
PO BOX 5067
KETCHUM ID 83340

MARK SHARER
6062 N BETHEL
CLOVIS CA 93619

MARY A SHAUL
2317 E 49TH N
IDAHO FALLS ID 83401

SHEPARD OF THE VALLEY LUTHERAN CHURCH
178 HWY 28
SALMON ID 83467

ROSS D SHEPPEARD
5 ROSS LN
SALMON ID 83467

ARCHIE SHERWOOD
PO BOX 163
CLAYTON ID 83227

SHILOH WARM SPRINGS RANCH LLC
CHRISTOPHER W JAMES MANAGER
PO BOX 510
CHALLIS ID 83226

CHRISTY, DEBBIE A, DEBRA, DEENA, JAMES D, MARK AND
STEPHEN SHINER
PO BOX 43
LEMHI ID 83465

CHRISTY AND MARK SHINER
PO BOX 116
LEMHI ID 83465

SHINER RANCH INC
PO BOX 26
LEMHI ID 83465-0025

SHOSHONE BANNOCK TRIBES
PO BOX 306
FORT HALL ID 83203

GEORGE L AND RAMONA L SHOUP
PO BOX 48
TENDON ID 83468

MERRILL G SHUPE
183 N 1100 W
WEST BOUNTIFUL UT 84087

VERLE L SHUPE
246 E ELBERTA DR
NORTH OGDEN UT 84414

JAMES L SHUPE
296 S 250 EAST
HYDE PARK UT 84318

OWEN K SHUPE
470 E 750 S
LOGAN UT 84321

JUDY A AND LARRY G SIDLO
7957 CHALLIS CREEK RD
CHALLIS ID 83226-4936

FRED SILVA
1923 N 25TH ST
BOISE ID 83702

JIM SILVA
PO BOX 743
SHOSHONE ID 83352-0743

CHRISTINE E SIMON
6380 PLANTATION LN
BOISE ID 83703

JOHN AND LYNN SIMPSON
309 MANUELLA AVE
WOODSIDE CA 94062

DEBORAH AND WAYNE SIMPSON
PO BOX 1056
CHALLIS ID 83226

KAREN JEAN AND PATRICK E SIMPSON
PO BOX 6151
SUN VALLEY ID 83353

JOHN ALFRED AND SUSAN ISLEY SIMPSON
774 LEMHI RD
SALMON ID 83467

CINDY M SIMS
PO BOX 602
BREMERTON WA 98337

NEIL SIMS
292 LEE CREEK ROAD
LEADORE ID 83464

CHARLOTTE J SINCLAIR
2503 COSTERO MAGESTUOSO
SAN CLEMENTE CA 92673

JIM AND JUDY SKINNER
SKINNER FAMILY TRUST
47 SKINNER RANCH RD
SALMON ID 83467-5238

BARBARA K, MILTON A, ROBERTA A AND WILLIAM G SLAVIN
PO BOX 255
CARMEN ID 83462

MARY E SLOAN
1063 LEMHI RD
SALMON ID 83467

ELZIE RAY SLOAN JR
1065 LEMHI RD
SALMON ID 83467

SMILEY CREEK BEARS LLC
HC 64 BOX 9102
KETCHUM ID 83340

SMILEY CREEK WATER USERS ASSN
HC 64 BOX 9108
KETCHUM ID 83340

JUDY AND LOYEL DEAN SMITH
PO BOX 734
CHALLIS ID 83226

GRACE A AND R J SMITH
PO BOX 65
TENDRY ID 83468

JORDAN P AND MARY K SMITH
129 LEMHI RD
SALMON ID 83467

STEVE SMITH
1200 MAIN ST
SALMON ID 83467

HELEN AND HELEN G SMITH
870 JENKINS CRK RD
WEISER ID 83672-5140

JENNIE H AND RICHARD R SMITH
PO BOX 1032
SALMON ID 83467

JORDON P SMITH
807 MAIN ST
SALMON ID 83467

CLYDE C AND JENNIFER SMITH
PO BOX 244
SALMON ID 83467

LOIS AND QUINTON SNOOK
C/O EDWARD SNOOK
1205 HWY 28
SALMON ID 83467

EDWARD M SNOOK
1205 HWY 28
SALMON ID 83467

FRED H SNOOK
SNOOK LAW OFFICE
44 CEMETERY LN
SALMON ID 83467

CLAYSON S AND DOROTHY C SNOOK
8 QUINTON LN
SALMON ID 83467

KARL W AND WILLIAM A SNYDER
PO BOX 49
LEMHI ID 83465

CLARENCE R AND SHARON J SOLAAS
3 S BAKER RD
BAKER ID 83461

SOUTH LEMHI SCHOOL DISTRICT #292
PO BOX 119
LEADORE ID 83464

SCOTT R SPAETH
PO BOX 147
SALMON ID 83467

MIDY AND STEVEN SPEICH
160 HWY 28
SALMON ID 83467

BARBARA J AND JAMES E SPRINKLE
609 HWY 28
SALMON ID 83467

ROBERT C ST CLAIR
PO BOX 8
DAVENPORT WA 99122

CRAIG R STAHL
PO BOX 1214
SALMON ID 83467

WILLIAM D STANLEY
474 W RIVERTON RD
BLACKFOOT ID 83221

STANLEY BASIN WELL OWNERS ASSOCIATION INC
C/O JED GRAY
PO BOX 326
SUN VALLEY ID 83353

STANLEY FAMILY REVOCABLE TRUST
C/O MELINDA STANLEY
161 RAINBOW DR PMB 6199
LIVINGSTON TX 77399

STANLEY RANCH LLC
2070 S SPRINGBROOK LN
BOISE ID 83706

BRENDA AND MARK STARK
HC 63 BOX 1778
CHALLIS ID 83226

STATE OF IDAHO
DEPT OF FISH & GAME
PO BOX 25
BOISE ID 83707

STATE OF IDAHO
DEPT OF TRANSPORTATION
BUREAU OF AERONAUTICS
3483 RICKENBACKER
BOISE ID 83705

STATE OF IDAHO
DEPT OF FISH & GAME
600 S WALNUT
BOISE ID 83707

STATE OF IDAHO
DEPT OF FISH & GAME
99 HWY 93 N
SALMON ID 83467-1336

STATE OF IDAHO
IDAHO WATER RESOURCE BOARD
322 E FRONT ST
PO BOX 83720
BOISE ID 83720-0098

STATE OF IDAHO
IDAHO FISH & GAME COMMISSION
PO BOX 25
BOISE ID 83707-0025

STATE OF IDAHO
DEPT OF LANDS
STATEHOUSE
BOISE ID 83720-0050

KENNETH E AND RAMONA C STAUFFER
15 RED ROCK STAGE RD
SALMON ID 83467

LINDA L AND ROBERT M STEEVER
PO BOX 118
CHALLIS ID 83226

BETH N STEPHENS
HC 61 BOX 3028
CHALLIS ID 83226

ANN AND THOMAS STEPHENSON
31 RED ROCK STAGE RD
SALMON ID 83467

GORDON AND MARY STEPHENSON
30 N BAKER RD
SALMON ID 83467-5170

DOLLY STERLING
PO BOX 195
CHALLIS ID 83226

FRED R STEWART
277 S EDEN RD
JEROME ID 83338

TERRI L AND THOMAS D STILLWAUGH
350 ROD & GUN CLUB LOOP
CHALLIS ID 83226

JEAN STOCKTON
814 E ST
RUPERT ID 83350

J FRANK STODDARD
HC 68 BOX 17
LEADORE ID 83464

BETTY W AND EARL DEAN STOKES
19 N BARRACKS LN
SALMON ID 83467

PATSY AND WYNN STOKES
322 N ST CHARLES
SALMON ID 83467

PAUL STOKES
10 PARKVIEW RD
SALMON ID 83467

KATHERYNE W AND ROBERT W STOKES
61 LEMHI RD
SALMON ID 83467

RICHARD LARRY STONE
PO BOX 1331
SUN VALLEY ID 83353

CLYDE A STOUT
PO BOX 132
LEMHI ID 83465

DAWNA R AND LARRY R STOUT
PO BOX 43
LEADORE ID 83464

DANNIE A, EVELYN A, SALLY L AND SPENCER D STRAND
PO BOX 81
CHALLIS ID 83226

FRANK STRATTON
PO BOX 1840
TRUCKEE CA 96160

CYNDIE J AND TERRY S STRATTON
PO BOX 6
TENDLOY ID 83468

CHARLOTTE STREET
608 FAIRMONT ST
SALMON ID 83467

MARIE E STRICKLAN
PO BOX 174
CARMEN ID 83462

PATTY L STRICKLAN
140 HWY 28
SALMON ID 83467

MYRA AND TED STRICKLER
PO BOX 191
CHALLIS ID 83226

ESTHER A AND FRED E STRICKLER
2480 E HUBBARD RD
MERIDIAN ID 83642

JAMES B AND LA VINNA STROUD
PO BOX 162
LEADORE ID 83464

DE ANNA STROUD
PO BOX 164
LEADORE ID 83464

A VINN AND DEBORAH LEE STRUPP
324 LEE CR RD
LEADORE ID 83464

ELAINE, JERRY S AND TAB J STUART
PO BOX 1092
CHALLIS ID 83226

THOMAS R STUART III
749 E HIGHPOINT LN
BOISE ID 83712-6561

DENNIS AND LEAH STUDEBAKER
PO BOX 2618
KENAI AK 99611

JUDY K AND WILLIAM STUDEBAKER
2616 E 4000 N
TWIN FALLS ID 83301

JUDY K AND WILLIAM STUDEBAKER
2616 E 4000 N
TWIN FALLS ID 83301

JOE AND TONI K SULLIVAN
PO BOX 119
CHALLIS ID 83226

ROBERT P SULLIVAN III
1150 BIG CREEK RD
MAY ID 83253-4920

KIT H AND ROSEMARY SUMMERS
PO BOX 121
DRIGGS ID 83422

TIMOTHY BILL SUNDLES
PO BOX 1480
ST IGNATIUS MT 59865

SUNRISE ACRES HOMEOWNERS ASSN
PO BOX 1115
CHALLIS ID 83226-1115

LARRY A AND MARGARET SCOTT SVALBERG
PO BOX 1181
SALMON ID 83467

RODGER C SWANSON
71 PRICE CREEK RD
SALMON ID 83467

JAMES STEWART AND WANDA SWIGERT
HC 63 BOX 1521
CHALLIS ID 83226

LULA AND RICHARD SWINDELL
PO BOX 236
CHALLIS ID 83226

DE MARIA E AND STEVEN R TANNER
129 TANNER WAY
ORLAND CA 95963

DANIEL C TANNER
550 ROD & GUN CLUB LOOP
CHALLIS ID 83226

ERIC, JIM AND REAH TARKALSON
705 LEMHI RD
SALMON ID 83467

KATHRIN S AND ROBERT L TAYLOR
PO BOX 771
CHALLIS ID 83226

PHILIP EDWARD AND SHERRY TAYLOR
27 N BAKER RD
SALMON ID 83467

B ALLEN AND WHITNEY E TELLER
PO BOX 79
TENDRY ID 83460

THE ANDREW & LINDA LAWLER FAMILY TRUST
240 NEWPORT CENTER DR STE 205
NEWPORT BEACH CA 92660-7514

THE BANK OF COMMERCE
FBO CLAYNE A HANSON IRA
3543 E 630 N
MENAN ID 83434

THE CHUCK CHESNEY & BERT CHESNEY FAMILY CABIN TRUST
58 CRANE LN
CHALLIS ID 83226

THE HAROLD G PHARRIS & VIRGINIA W PHARRIS LIVING
TRUST
360 ASPEN DR
BLISS ID 83314

THE JEANA MARIE DONALDSON-THOMAS TRUST
1620 CUSTER AVE
ODESSA TX 79761

THE LEE 2001 REVOCABLE TRUST
DENNIS K & VERNAGAE LEE
PO BOX 521
ALTAVILLE CA 95221

THE MARSHALL ROBERT CHING & PHYLLIS J CHING
REVOCABLE TRUST
MARSHALL ROBERT CHING TRUSTEE
PHYLLIS J CHING TRUSTEE
150 LIMELIGHT WAY

THE MC COMISH FAMILY TRUST
300 HOTSPRINGS RD #221
MONTECITO CA 93108-2035

THE MC COMISH FAMILY TRUST
300 HOTSPRINGS RD #221
MONTECITO CA 93108-2035

THE ROBINSON FAMILY LIVING TRUST
20652 POWDER HORN RD
HIDDEN VALLEY LAKE CA 91361

KAMI THIMONS
14 STRAWBERRY LN
SALMON ID 83467

KIM GEORGE THOMAS
PO BOX 375
SALMON ID 83467

DORENE THOMAS
5697 S FAR VISTA DRIVE
SALT LAKE CITY UT 84118

C LYNN AND HEATHER THOMAS
PO BOX 215
SALMON ID 83467

EDWINA, LEE, MIKE AND SANDY THOMAS
HC 63 BOX 1575-4
CHALLIS ID 83226

KARLA AND LARRY THOMPSON
15141 OSPREY PL
CALDWELL ID 83607

THOMPSON CREEK MINING CO
26 W DRY CREEK CIR STE 810
LITTLETON CO 80120

ALICIA AND DENNIS THORNOCK
PO BOX 1003
CHALLIS ID 83226

JEAN S AND LESLIE E THURMOND
PO BOX 262
VICTOR ID 83455

GLENN CONRAD THURSTON
1900 PARKWOOD ST APT A 107
IDAHO FALLS ID 83401

GLENN CONRAD THURSTON
1900 PARKWOOD ST APT A 107
IDAHO FALLS ID 83401

THOMAS T TIERNEY
23111 MARAVILLA LN
COTO DE CAZA CA 92679

ELIZABETH C TIERNEY
2802 DOW AVE
TUSTIN CA 92780

JOANNE S TINGLE
PO BOX 812
SALMON ID 83467

RONALD D TOBIAS
PO BOX 13
LEMHI ID 83465-0013

DAVID R TOMCHAK
305 BARLOW DR
IDAHO FALLS ID 83401

FRANCES B AND JOSEPH L TONSMEIRE
PO BOX 72
LEMHI ID 83465

ELIZABETH D TONSMEIRE AND TONSMEIRE PROPERTIES LLC
6 S SUMMIT ST
FAIRHOPE AL 36532

CHRISTINE M, DANIEL L AND JOSEPH L TONSMEIRE
PO BOX 871
SALMON ID 83467

CHRISTOPHER L AND DANIEL LEE TONSMEIRE
129 N BAYSHORE DR
EASTPOINT FL 32328

RONALD J TROY AND YVETTE TORREZ TROY
8600 BEVERLY HILLS AVE NE
ALBUQUERQUE NM 87122

DEBRA JEAN ENGQUIST TORSKE
1277 HIGHWAY 28
SALMON ID 83467

MALINDA AND VINCENT TRACY
3 PRAIRIE RD
SALMON ID 83467

JOHN B AND KATHERINE A TRACY
20 TRACY LN
SALMON ID 83467

TRIPLE T SUMMIT RANCH
C/O EDWIN C & LINDA M THOMAS
PO BOX 1842
SUN VALLEY ID 83353

BOB G TRIPP JR AND JULIA L TRIPP
10464 W GIBSON JACK RD
POCATELLO ID 83204

BRANT AND LYNN TRITTHART
HC 63 BOX 1769
CHALLIS ID 83226

THOMAS L TRITTIPO
HC 67 BOX 320
STANLEY ID 83278

FRANCES AND MICHAEL TUPPER
HC 63 BOX 1814
CHALLIS ID 83226

CHERYLL AND DANNY TURNER
1656 HWY 46
GOODING ID 83330

ARTHUR P TURNER
7103 REDWOOD RD #421
WEST JORDAN UT 84084

KARL L TYLER
PO BOX 401
LEADORE ID 83464

DONNA F, KARL AND KEVIN TYLER
10115 MULLAN RD
MISSOULA MT 59808

EUNICE AND SCOTT TYLER
762 LEE CREEK RD
LEADORE ID 83464

SANDRA F AND THOMAS C UDY
PO BOX 215
LEADORE ID 83464-0215

WANDA L UDY
PO BOX 184
LEADORE ID 83464

ALAN AND LINDA ULERY
193 HWY 28
SALMON ID 83467

JAY UNDERWOOD
PO BOX 701
CHALLIS ID 83226

UNITED STATES OF AMERICA ACTING THROUGH
USDA FOREST SERVICE
2647 KIMBERLY RD
TWIN FALLS ID 83301-7976

UNITED STATES OF AMERICA ACTING THROUGH
USDI FISH & WILDLIFE SERVICE
DIVISION OF ENGINEERING
911 N E 11TH AVE
PORTLAND OR 97232-4181

UNITED STATES OF AMERICA ACTING THROUGH
USDI BUREAU OF LAND MANAGEMENT
IDAHO STATE OFFICE
1387 S VINNELL WAY
BOISE ID 83709-1657

UNITED STATES OF AMERICA ACTING THROUGH
USDA FOREST SERVICE
550 W FORT ST MSC 033
BOISE ID 83724

DEBORAH AND WAYNE UNRUH
10 KARLA DR
SALMON ID 83467

US ANTIMONY CORP
PO BOX 643
THOMPSON FALLS MT 59873

US DEPT OF AGRICULTURE
FOREST SERVICE
324 25TH ST
OGDEN UT 84401

US DEPT OF INTERIOR
BUREAU OF LAND MANAGEMENT
SALMON DISTRICT
1206 S CHALLIS ST
SALMON ID 83467

VALLEY SUN LLC
C/O GORDON YOUNGER
1000 SW 43RD ST
RENTON WA 98057

MIKE W VAN DUSEN
BOX 171
CLAYTON ID 83227

CINDY AND KURT W VAN PELT
HC 67 BOX 2015
CHALLIS ID 83226

MICKEY AND THERESA VERBECK
108 LOMBARD
SALMON ID 83467

CONRAD E AND JUNE E VITZTHUM
12 RED ROCK STAGE RD
SALMON ID 83467

DONALD AND TERESA WADE
1538 HWY 28
SALMON ID 83467

JAMES W WAGNER
216 RED ROCK STAGE RD
SALMON ID 83467

MARGUERITE J AND MICHAEL P WALKER
93 DC BAR RD
LEADORE ID 83464

US DEPT OF AGRICULTURE
FOREST SERVICE
SAWTOOTH NATIONAL FOREST
2647 KIMBERLY RD E
TWIN FALLS ID 83301-7976

USDI-BLM
1206 S CHALLIS ST
SALMON ID 83467

JOHN K VAN ALFEN
PO BOX 1390
CHALLIS ID 83226

LESLIE AND THOMAS VAN KAMPEN
PO BOX 361
CHALLIS ID 83226

JAMES J VENEROS
89 SAGEBRUSH AVE
SALMON ID 83467

VERSALLES REAL ESTATE CORP
C/O ANDREE DOYLE
725 N RIVERSIDE DR #201
POMPANO BEACH FL 33062

KAREN AND LAURENCE WADE
505 GRANITE
SALMON ID 83467

DAVID BARRY WAGNER
403 ARROYO CHICO
BOULDER CO 80302

DARREL K AND KELLIE D WAHLSTROM
PO BOX 149
CHALLIS ID 83226

LEEANN AND ROCKIE L WALKER
569 HWY 28
SALMON ID 83467

JAMES R AND RANEE C WALL
12024 GOLDENROD DR
BOISE ID 83713

GOLDE WALLINGFORD
PO BOX 190
LAUPAHOEHOE HI 96764-0190

ANN MARIE AND NORMAN H WALLIS
1971 PAHSIMEROI RD
MAY ID 83253

CAROL J AND JEROLD P WALSH
PO BOX 1243
CHALLIS ID 83226

ELLSWORTH B WARD
221 S AGATE DR
SALMON ID 83467-5217

DONALD E AND SHARYN WARD
1970 VAN CIR
IDAHO FALLS ID 83404

DONALD E WARD
145 WIMPEY CREEK RD
SALMON ID 83467-5284

SHARYN WARD
RT 1 BOX 25AB
SALMON ID 83467

JERRY AND LYRENE WARREN
342 CASA GRANDE CT
TWIN FALLS ID 83301

BETH ANN WATERBURY AND THOMAS WRIGHT KEEGAN
29 NIGHT HAWK LN
SALMON ID 83467

ROBIN WATKINS
PO BOX 2244
SALMON ID 83467

DEBRA L AND KENT S WATSON
PO BOX 650
CHALLIS ID 83226-0650

STEVE WATTS
454 10TH ST
IDAHO FALLS ID 83404

WDW LLC
115 VICTOR DR
HAILEY ID 83333

CHRISTINE AND JAMES WEBB
PO BOX 706
SPRINGVILLE CA 93265

DUSTIN R AND SANDY J WEBSTER
PO BOX 1015
CHALLIS ID 83226

ROBIN J WEGNER
HC 63 BOX 1576
CHALLIS ID 83226

JAC WEINHEIMER
55 VALLEY LN
BUFFALO WY 82834

JAMES O WEISS
PO BOX 62
WISDOM MT 59761

FRANK J AND NORMA J WELLARD
9 THREE MILE LN
SALMON ID 83467

C RICHARD, CHARLES, JO E AND TERRI WENGER
189 LEMHI RD
SALMON ID 83467

WESLEY & BONNIE ROSE LIVING TRUST
60 FIFE LN
SALMON ID 83467

WESTERN RIVERS CONSERVANCY
71 SW OAK ST STE 100
PORTLAND OR 97204

WESTERN SKY TWO LLC
HC 64 BOX 9958
STANLEY ID 83278

J SHANE AND PATTY ANN WESTFALL
PO BOX 382
CRAIG AK 99921

JAMES R AND MICHELLE WETZEL
PO BOX 167
STANLEY ID 83278

ARTHUR MARC AND MICHELLE R WHISLER
50 BOWMAN LN
SALMON ID 83467

MARY D WHITE
2004 PAHSIMEROI RD
MAY ID 83253

WHITE CLOUD RANCH LLC
1501 GALAXY DR
NEWPORT BEACH CA 92660

WHITECLOUD RANCH LLC
PO BOX 425
HAILEY ID 83333

CARI AND WALTER T WHITSON
13 LEMHI RD
SALMON ID 83467

WALTER BRUCE WHITSON
PO BOX 22
LEMHI ID 83465-0022

F JAMES AND PAULA J WHITTAKER
83 BIG EIGHT MILE RD
PO BOX 240
LEADORE ID 83464

JORDAN JAMES AND SUSAN M WHITTAKER
PO BOX 177
LEADORE ID 83464

CALVIN J AND CAROL L WHITTAKER
PO BOX 10
LEADORE ID 83464

JUDI A AND LARRY D WHITTIER
4402 PAHSIMEROI RD
MAY ID 83253

SCOTT L AND GWEN M WHITWORTH
62 PETERSEN LANE
MAY ID 83253

JUDD A WHITWORTH
PO BOX 126
ELLIS ID 83235-0126

DIXIE L WHITWORTH
PO BOX 870
HUMBOLDT AZ 83253

WHITWORTH RANCHES INC
PO BOX 167
MAY ID 83253

DORIS MAYE WIKAN
PO BOX 154
LEADORE ID 83464

ARTHUR J AND DIANA I WILL
PO BOX 163
CHALLIS ID 83226-0163

MICHAEL R AND SHANA D WILLIAMS
9715 CHALLIS CREEK RD
CHALLIS ID 83226-4847

GRACE, OLIVER AND SIDNEY WILLIAMS
3 SCOTT LN HWY 28
SALMON ID 83467

MEITA D WILSON
PO BOX 188
BELLEVUE ID 83313

EVELYN AND JOHN WILSON
2734 E 105 N
IDAHO FALLS ID 83401

ALETHEA WINCHESTER
175 COWBOY WAY
CHALLIS ID 83226

CRAIG C WINSTEAD
PO BOX 1250
CHALLIS ID 83226

LEE H AND MARGARET ANN WITTE
19 PARKVIEW RD
SALMON ID 83467

DALE K AND MARILYN F WOLFLEY
15 SUMMER MEADOW LN
SALMON ID 83467

BRENT L AND KANDICE J WILCOX
TRUSTEE OF THE BRENT L & KANDICE J WILCOX FAMILY
TRUST
3644 BROKEN FEATHER DR
NORCO CA 92860

CARLA AND TOBIN WILLIAMS
PO BOX 2572
TWIN FALLS ID 83303-0257

CAILLE ROSE, GARY JOHN, KURT ALAN, ROCKY ANTHONY
AND SCOTT SEBASTIAN WILLIAMS
209 WIMPEY CREEK RD
SALMON ID 83467

WESLEY A WILLS
PO BOX 7133
KETCHUM ID 83340

HAROLD D WILSON
425 124TH AVE NW
GRASSY BUTTE ND 58634

C R WILSON
RT 1 BOX 25A
SALMON ID 83467

JAKE A WINDSOR
HC 67 BOX 674
CLAYTON ID 83227

PAUL WITHERS
815 LEMHI RD
SALMON ID 83467

WO-HE-LO SUBDIVISION
C/O BARRY NEIWERT PRESIDENT
305 BAYHORSE RD
BELLEVUE ID 83313

DAVID M AND DEBORAH K WOOD
PO BOX 946
CHALLIS ID 83226

WOOD RIVER LAND TRUST CO
119 E BULLION ST
HAILEY ID 83333

DANIEL WOOLLEY
PO BOX 1204
CHALLIS ID 83226

BRETT WOOLLEY
PO BOX 23
STANLEY ID 83278

ANDREW JACKSON AND GWENDOLYN O WOOLWINE
PO BOX 942
CHALLIS ID 83226-0942

STEPHEN WREN
HC 63 BOX 1573
CHALLIS ID 83226

Y LIVESTOCK RANCH
PO BOX 5023
TWIN FALLS ID 83303-5023

ANTONY R, BILL ROY, MADGE E, THOMAS LEE AND TONY S
YACOMELLA
PO BOX 51
CHALLIS ID 83226

TERRI S AND THOMAS L YACOMELLA
PO BOX 769
CHALLIS ID 83226

FRANKLIN DELANO YANCEY
PO BOX 1554
MANTECA CA 95336

JUNE P YANCEY
13577 S UNION RD
MANTECA CA 95336

YANKEE FORK GOLD DREDGE ASSN
8583 W ORBIT DR
BOISE ID 83709

KEVIN YELTON
395 PAHSIMEROI RD
ELLIS ID 83253

HARVEY J B AND SUSANNE S YOUNG
PO BOX 1954
BROOKINGS OR 97415

DELILA AND RULON RICHARD YOUNG
1700 SHOUP ST
SALMON ID 83467

LYNN M AND STEPHEN L YOUNG
PO BOX 103
SALMON ID 83467-0103

ZENAS R HARTVIGSON CO
746 KING ST
DENVER CO 80204

ZENAS R HARTVIGSON CO
746 KING ST
DENVER CO 80204

MAURENE AND TROY R ZIEGLER
26290 HWY 93 N
CHALLIS ID 83226

CLIFFORD L ZIELKE
PO BOX 1201
SALMON ID 83467

LINDA ANN ZOLLINGER
HC 63 BOX 1170 SP 10
CHALLIS ID 83226