



State of Idaho

DEPARTMENT OF WATER RESOURCES

322 East Front Street • P.O. Box 83720 • Boise, Idaho 83720-0098

Phone: (208) 287-4800 • Fax: (208) 287-6700 • Website: www.idwr.idaho.gov

C.L. "BUTCH" OTTER
Governor

GARY SPACKMAN
Director

September 19, 2013

RE: Preliminary Order Combining Water Districts in Basin 37 and Inclusion of both Surface and Ground Water Rights in the Combined Water District; and Abolishing the Upper Wood Rivers Water Measurement District

Dear Water Right Holder,

Enclosed please find a copy of the Preliminary Order regarding the above referenced matter. This order creates a new water district for administration of surface water and ground water rights in the Camas Creek drainage area, including merger of Water Districts 37A and 37C with the new district; combines Water Districts 37 and 37M and includes ground water rights from the Upper Wood River Valley and the Silver Creek drainage in the combined district; and abolishes the Upper Wood Rivers Water Measurement District. The records of the Idaho Department of Water Resources ("Department" or "IDWR") show that you own or have an interest in one or more water rights that are located within the water districts or water measurement district affected by the enclosed Preliminary Order.

Also enclosed is an informational sheet that explains options for responding to preliminary orders. Please note that any party subject to the order may file a petition for reconsideration within fourteen (14) days of the service date of the order, which is the date of this letter. The Department will act upon petitions within twenty-one (21) days of their receipt.

The Department will send a separate notice to water users specifying a date, time and location of annual meetings for the new or revised water districts. The water users present at the meetings must consider election of a watermaster, selection of an advisory committee and adoption of a budget. IDWR will organize a steering committee of representative water users within the districts to assist with preparation for the annual meetings. IDWR is considering scheduling at least one steering committee for each water district prior to the annual meetings. If you are interested in participating in a steering committee, please contact Tim Luke, IDWR at 208-287-4959 or by e-mail at tim.luke@idwr.idaho.gov.

Please contact this office or the IDWR regional office in Twin Falls (208-736-3033) if you have any questions concerning the attached order.

Sincerely,

Tim Luke
Water Compliance Bureau

Enclosures: *Preliminary Order*
Responding to Preliminary Orders issued by IDWR

c: IDWR Southern Region

**BEFORE THE DEPARTMENT OF WATER RESOURCES
OF THE STATE OF IDAHO**

IN THE MATTER OF THE PROPOSED)
COMBINATION OF WATER DISTRICT NOS.)
37, 37A, 37C AND 37M AND THE INCLUSION)
OF BOTH SURFACE WATER AND GROUND)
WATER RIGHTS IN THE COMBINED WATER)
DISTRICT; AND IN THE MATTER OF)
ABOLISHING THE UPPER WOOD RIVERS)
WATER MEASUREMENT DISTRICT)
_____)

PRELIMINARY ORDER

The Director (“Director”) of the Idaho Department of Water Resources (“Department”) is required by statute to divide the state into water districts for the purpose of performing the essential governmental function of distributing water among appropriators under the laws of the State of Idaho. *In re Idaho Dept. of Water Res. Amended Final Order Creating Water Dist. No. 170*, 148 Idaho 200, 211, 220 P.3d 318, 329 (2009). Idaho Code § 42-604 provides the Director with discretion in determining how these mandatory water districts shall be structured, allowing the Director to create new districts, revise existing districts, or even abolish districts, as the Director finds necessary for the efficient distribution of water resources. *Id.* Idaho Code § 42-706 authorizes the Director to create or abolish a water measurement district if such action is required to properly administer water uses. Based upon the record in this matter, the Department finds, concludes and orders as follows:

FINDINGS OF FACT

1. Water District No. 37 (“WD37”) includes surface water sources and water rights in the Big Wood and Malad River drainages excluding Water District Nos. 37M, 37A and 37C, and is located within portions of Blaine, Camas, Lincoln and Gooding Counties. WD37 annually elects a watermaster and adopts a budget to provide for the distribution of water from the Big Wood River and tributaries in accordance with the priorities of the water rights from those sources. WD37 has provided annual water delivery reports since 1920.
2. Water District No. 37M (“WD37M”) includes surface water sources and water rights in the Little Wood River drainage area from the mouth of Silver Creek to the confluence of the Big Wood River, including the Silver Creek drainage, and is located within portions of Blaine, Camas, Lincoln and Gooding Counties. WD37M annually elects a watermaster and adopts a budget to provide for the distribution of water from the Little Wood River and Silver Creek drainage in accordance with the priorities of the water rights from those sources. WD37M has provided annual water delivery reports since 1920.
3. WD37 and WD37M share the same watermaster, administrative staff and office. This practice of sharing staff and office resources along with submittal of combined annual reports for the two districts has occurred since 1921. Although the two districts still maintain separate budgets, they have in recent years combined their annual meetings to jointly adopt the same resolutions and select a common advisory committee.

4. Water District No. 37A (“WD37A”) includes surface water sources and water rights in the Corral Creek drainage located in Camas County. Corral Creek is tributary to Camas Creek. WD37A has been an inactive water district for over 33 years.

5. Water District No. 37C (“WD37C”) includes surface water sources and water rights in the Soldier Creek drainage located in Camas County. Soldier Creek is tributary to Camas Creek. WD37C has been an active water district over the past twenty years. The district holds annual meetings and elects a watermaster but does not consistently provide annual meeting minutes or other reports required of water districts pursuant to chapter 6, title 42, Idaho Code.

6. In 1980, the Director issued a policy memorandum declaring surface water in the Big Wood River basin upstream from Magic Reservoir, including Camas Creek, was fully appropriated.

7. On June 28, 1991, the Director issued an order creating the Big Wood River Ground Water Management Area pursuant to Idaho Code § 42-233b. The management area included ground water located within the Wood River Valley and the Camas Creek drainage above Magic Reservoir, and the Silver Creek/Bellevue triangle area. Finding of Fact 2 from the order stated the following:

The surface and ground waters of the Big Wood River drainage are interconnected. Diversion of ground water from wells can deplete the surface water flow in streams and rivers. New ground water uses can also deplete available supplies for other users and affect basin underflow which presently accumulates in the Magic Reservoir.

8. On September 21, 2011, the Department created the Upper Wood Rivers Water Measurement District (“UWRWMD”) for the purpose of measuring and reporting ground water diversions located within the Department’s Administrative Basin No. 37 (“Basin 37”) and the Upper Big and Little Wood River drainages outside of the Eastern Snake Plain Aquifer (“ESPA”).¹ The measurement district included ground water rights in the Camas Creek drainage area. Camas Creek is tributary to the Big Wood River at Magic Reservoir.

9. On February 20, 2013, the Snake River Basin Adjudication (“SRBA”) District Court issued an order authorizing the Director to distribute water pursuant to chapter 6, title 42, Idaho Code, in accordance with the Director's Reports and partial decrees that have superseded the Director's Reports for those surface and ground water rights located in Basin 37, part 2 (Camas and Clover Creek drainage areas) and part 3 (Upper Big and Little Wood River drainage areas). The District Court’s order found that “interim administration ... is reasonably necessary to efficiently administer water rights and to protect senior water rights.”

10. On July 10, 2013, the Director prepared a notice of public hearing proposing the following actions pursuant to the provisions of Idaho Code §§ 42-604 and 42-706:

- i. Combine WD37, WD37M, WD37A and WD37C;
- ii. Include surface water rights from the Camas Creek drainage in the combined water district, except surface water rights used for domestic and stock water purposes as defined by Idaho Code §§ 42-111 and 42-1401A(11) and surface water rights used for in-stream watering of livestock as defined by Idaho Code § 42-113;

¹ The UWRWMD included ground water rights located within the Snake River Basin Adjudication reporting areas of Basin 37, Parts 2 and 3.

- iii. Include in the combined water district ground water rights from the UWRWMD overlying the combined district in that portion of Basin 37 outside of the ESPA, except ground water rights for domestic and stock water uses as defined by Idaho Code §§ 42-111 and 42-1401A(11); and,
- iv. Abolish the UWRWMD.

The notice was sent by regular U.S. Mail on July 12, 2013, to each holder of a water right affected by the proposed actions above except holders of ground water rights used for domestic and stock water purposes as defined by Idaho Code §§ 42-111 and 42-1401A(11), and surface water rights used for in-stream watering of livestock as defined by Idaho Code § 42-113. The hearing notice described the proposed actions, the reasons therefore, and the time and place for a hearing to be held on July 30, 2013 concerning the proposed actions. The notice also provided a time period within which written comments on the proposed action would be accepted.

11. The notice explained that the proposed combination and revision of water districts is necessary in order to properly administer the water uses and water rights from both surface water and ground water sources in the combined water district area. The notice also explained that the UWRWMD was created in 2011 for the purpose of measuring and reporting ground water right diversions only and that regulation of ground water rights within the UWRWMD can only be accomplished through a water district created or modified pursuant to Idaho Code § 42-604.

12. On July 30, 2013, commencing at approximately 6:30 p.m. at the Blaine County School District Community Campus Auditorium in Hailey, Idaho, the Department conducted a public hearing concerning the proposed combination and revisions of water districts, and the abolishment of the UWRWMD. Allen Merritt, the Department's Southern Regional Manager, presided as hearing officer. Approximately 65 people attended the hearing.

13. The hearing officer initiated the hearing by explaining the hearing process. Department representative Tim Luke gave a presentation that described the proposed water district combination and revisions, the features and operation of water districts, the reasons for the proposed actions, and the rights and uses proposed to be included in the combined water district. The Department presented the following reasons for the proposed actions:

- Combining surface water rights from WD37 and WD37M will formalize a merger that has essentially been accomplished for a number of years. Combining the two districts will promote efficiency by eliminating dual budgets and duplication of certain processes.
- Ground water rights in the UWRWMD and most surface water rights in the Camas Creek drainage are not currently included in a water district subject to administration by a watermaster in an active water district. The UWRWMD has no authority to regulate ground water rights and is limited to measurement and reporting of ground water diversions only. Water rights not currently included in a water district whose sources of water have been adjudicated must be placed in a water district pursuant to Idaho Code § 42-604 "to properly administer uses of the water resource."
- The proposed combination of water districts and inclusion of surface water and ground water rights in one water district will provide for proper conjunctive administration of surface and ground water rights and the protection of senior priority water rights.
- The proposed combination of water districts and inclusion of surface water and ground water rights in one water district will provide for consistent, cost effective and efficient water district operations.
- Maintaining all of the ground water rights from the UWRWMD in one water district with surface water rights from WD37/37M will provide a consistent organizational structure

that can manage the measurement of ground water diversions as required by the Department.

- About 100 ground water rights in the Wood River Valley above Magic Reservoir and in the Silver Creek drainage are already regulated by the WD37/WD37M watermaster. Most of these rights require WD37/37M watermaster control because they are mitigated by surface water rights or because ground water is commingled with surface water sources. The Department believes it is more efficient and practical for all the ground water rights in the same area to be administered by one water district rather than separate water districts. It is not practical to remove the approximate 100 ground water rights in WD37 and WD37M to a separate water district given the existing watermaster control conditions and relationship with surface water rights and sources.
- The proposed combination of water districts and inclusion of surface water and ground water rights in one water district would simplify administration of the SRBA General Provisions for Basin 37, Part 2. These provisions stipulate that a large number of surface water rights in the Camas drainage are to be administered separately from all other rights in Basin 37. An additional but much smaller group of surface water rights are to be administered separately from all other water rights in Basin 37 but certain rights held by the Big Wood Canal Company may call for water delivery of water against this smaller group. All other Camas drainage surface water rights not listed in these General Provisions, and all Camas drainage ground water rights are to be administered with other water rights in Basin 37.
- Abolishing the UWRWMD is necessary if ground water rights in the UWRWMD are placed in a water district.

14. Following the presentation, the hearing officer provided time for hearing participants to ask questions' regarding the Department's proposed actions.

15. Persons attending the hearing were provided an opportunity to make oral statements for the record. In addition, the hearing officer held the record open through August 9, 2013 to receive written testimony.

16. Eleven (11) individuals testified at the hearing. Thirteen (13) individuals submitted written comments, including four (4) of the individuals who testified at the July 30, 2013 public hearing. One of the individuals submitting both oral testimony and written comments represented two separate groups of affected water users.

17. Five (5) individuals holding water rights or representing the holders of water rights within the Camas drainage testified against the Department's proposal to include the Camas drainage in a combined water district with water rights from WD37/37M and ground water rights from the Big Wood River Valley upstream of Magic Reservoir and the Silver Creek drainage. These five individuals proposed a single water district for the Camas drainage composed of both surface water and ground water rights, including rights from WD37A and WD37C. Four (4) additional individuals submitted written comments in supporting a separate Camas drainage water district.

18. Jim Speck, one of the five individuals who testified in support of a separate Camas drainage water district, spoke as a representative of numerous surface water and ground water right holders in the Camas drainage who had signed petitions requesting the Department "to create a new and separate water district for the administration of our rights and not add them to Water District 37." Copies of the signed petitions with associated water right owner names and water right identification

numbers were submitted to the Department before the close of the written comment period. Mr. Speck testified that fifty-four (54) of seventy-seven (77) surface water users, and thirty-nine (39) of forty-one (41) ground water users in the Camas drainage had signed petitions supporting a separate water district. Mr. Speck further testified that the users signing the petitions supported the merger or inclusion of WD37A and WD37C with all other surface and ground water rights in the Camas drainage under one water district separate from WD37.

19. Reasons cited by the supporters of a separate water district for surface water and ground water rights in the Camas Creek drainage, including rights from WD37A and WD37C include:

- The Camas drainage area aquifer is different and separate from the Wood River Valley aquifer and the two aquifers are not connected. The two aquifers may be considered “independent” sources of water supply in accordance with Idaho Code § 42-604, thereby justifying creation of separate water districts.
- A ground water model is currently being developed for the Wood River Valley and Silver Creek/Bellevue triangle area (most of Basin 37, part 3). This model does not include the Camas Creek area aquifer (most of Basin 37, part 2) and no effort is currently being made to develop a model for the Camas Creek area aquifer. Lack of a ground water model for the Camas drainage aquifer prohibits the ability to implement conjunctive administration of water rights from that portion of Basin 37. Moreover, mitigation that might be provided from the Camas drainage would be completely separate from mitigation that might be developed in the Upper Wood River Valley and the Silver Creek/Bellevue triangle area.
- Upper Wood River Valley water issues are not present or do not exist in the Camas Creek drainage area. There are almost no common water administration issues between Basin 37, parts 2 and 3.
- The SRBA General Provisions for Basin 37, part 2 stipulate that many surface water sources are to be administered separately from all of the water rights in Basin 37.
- A separate water district for the Camas drainage area would better serve the right holders in the area due to local control and supervision. A bigger water district does not necessarily translate to a better water district. Users in the area are willing to pay some additional costs if necessary for the benefit of local control.
- Water users in the Camas drainage would not be adequately represented in a larger combined water district because water use in the Camas drainage may be relatively smaller than other areas of the proposed combined district.
- Ground water pumping in the Camas drainage has minimal impact on the Big Wood River, and the surface water in the drainage is intermittent or separate from the Big Wood River after the early spring snow melt and high flow runoff.

20. In accordance with the SRBA General Provisions for Basin 37, part 2, nearly all of the consumptive use surface water rights in the Camas drainage (about 215 out of 267 rights) are to be administered separately from all other water rights in Basin 37. There are about seventeen (17) rights in the Camas drainage that are to be administered separately from all other rights in Basin 37 but these seventeen rights may be subject to a delivery call of certain rights held by the Big Wood Canal Company. This leaves only about thirty-five (35) rights in the drainage that do not enjoy the benefits of any separate administration provisions.

21. Ground water rights in the Camas drainage are subject to administration with other rights in Basin 37 and are also subject to measurement and reporting requirements established by the Department when it created the UWRWMD. There are approximately 80 ground water diversions in the

UWRWMD and Camas drainage. Many of the owners of these 80 ground water diversions and associated ground water rights also hold surface water rights in the Camas drainage.

22. Three (3) individuals holding ground water rights or representing the holders of ground water rights within the Big Wood River drainage above Magic Reservoir or within the Silver Creek drainage area testified against the Department's proposal to include ground water rights with surface water rights in a combined WD37. These individuals instead supported a separate water district for the holders of ground water rights. One of these three individuals also voiced support for formation of a ground water sub-district within a combined WD37.

23. Five (5) individuals submitted written comments opposing the inclusion of ground water rights in the same water district as surface water rights, including Mr. Speck; Mike Creamer, representing the City of Hailey; Bruce Smith, representing the City of Ketchum; Evan Robertson, representing the Sun Valley Water and Sewer District; and James Laski, representing himself as the owner of a small surface water right. Two (2) of these five individuals (Speck and Creamer) provided oral testimony at the hearing. Mr. Speck testified at the hearing that he represented nine (9) ground water users in the Big Wood Valley or Silver Creek area but he submitted written comments on behalf of twenty-seven (27) ground water right holders. The written comments submitted by Mr. Speck and Mr. Robertson stated support for the testimony and comments provided by Mr. Creamer. Mr. Creamer's written comments supported a separate water district of ground water rights located within Basin 37, part 3. The written comments submitted by Mr. Laski also voiced opposition to include water rights from the Camas drainage with those from the Wood River Valley in one combined water district. The comments submitted by Mr. Smith on behalf of the City of Ketchum also opposed the abolishment of the UWRWMD.

24. Reasons cited by those opposing the inclusion of ground water rights in a water district with surface water rights include:

- Adversarial interests between ground water users and surface water users resulting from any potential conjunctive administration process would compromise the operations of a water district where surface and ground water rights are combined. Conflicts between surface and ground water users may negatively impact the ability of the combined district to function efficiently and cooperatively.
- Ground water right holders would be out voted in a combined water district because the amount of ground water use is significantly less than the amount of surface water use in the proposed water district.
- Ground water users may not be adequately represented on an advisory committee selected for the proposed water district.
- Ground water users may bear a disproportionate cost of water district operations because the budget of the UWRWMD is significantly less than the combined budgets of WD37 and 37M.
- Water districts have been created in the ESPA that are composed primarily of ground water rights. Those water districts have worked well and provide a good model for Basin 37, parts 2 and 3.
- The ground water model for Upper Wood River and Silver Creek/Bellevue triangle area must be completed before ground water and surface water rights can be combined in a single water district.
- The Department should have presented a budget for the proposed water district as part of its' hearing notice or hearing presentation. Costs, management and potential

administrative conflicts between ground and surface users should be explained before combining surface and ground water rights in one district.

- It may be difficult or legally impossible to address potential delivery calls from holders of senior surface water rights and potential mitigation requirements of junior ground water right holders if surface and ground water users are combined in one water district.

25. Two (2) individuals owning surface water rights in WD37 or WD37M testified at the hearing in support of the Department's proposal of a combined water district for both surface water and ground water rights. One of these 2 individuals, Fred Brossy, spoke on both his own behalf and on behalf of the WD37 and WD37M Advisory Committee. Mr. Brossy is the chairman of the WD37/WD37M Advisory Committee.

26. One (1) individual owning several small irrigation ground water rights in the Upper Wood River Valley and the UWRWMD submitted written comments supporting the Department's proposal for combining surface water and ground water rights in one water district.

27. Reasons cited by those supporting the Department's proposal include:

- The WD37/37M advisory committee has long supported the administration of ground water rights above Magic Reservoir (including the Camas drainage) and the Silver Creek drainage with surface water rights in WD37/37M. The committee petitioned the Director to begin administration of ground water rights many years ago.
- Ground water and surface water sources within Basin 37, parts 2 and 3 are connected as one water source so administration of rights in one district is reasonable.
- Combining surface water and ground water rights in one water district will generally provide for more effective, efficient, lawful and equitable administration of water rights.
- More effort is needed to complete the measurement of ground water diversions in the area. Ground water measurement compliance may be accomplished under one water district.
- Cost assessments to ground water users and surface water users under one combined water district should not be more than the current level of assessments.
- A combined water district will promote an opportunity for ground water and surface water users to work together on problems affecting the two groups. A single district will create a more regional approach to water management and resolution of basin wide issues whereas separate districts may provide more local control but result in more local conflicts.
- Delays in combining surface water rights and ground water rights in one water district may delay effective conjunctive administration of water resources.

28. The watermaster of WD37 and WD37M, Kevin Lakey, submitted written comments that addressed some of the testimony at the hearing regarding concerns about conjunctive management. Mr. Lakey noted that water users at annual water district meetings only vote on district "budget, hiring and resolutions" and not "on how conjunctive management will be enforced." Mr. Lakey also noted that representation on the WD37/37M advisory committee is not based on the amount of water delivered but rather on geographical areas and types of beneficial use. Mr. Lakey believed that a fair representation of water users can be established in a combined water district.

29. One (1) individual representing himself as the owner of a small irrigation ground water right in the Bellevue triangle area testified at the hearing that he did not support the Department's proposal and generally did not support the inclusion of his ground water right in any water district because such action will derive no benefit to him. This individual however did state that he was more

supportive of smaller units of administration because his right and interests “would not be lost in the shuffle.”

CONCLUSIONS OF LAW

1. Idaho law declares all surface water, when in natural channels or springs or lakes, and all ground water within the State of Idaho to be the property of the state, whose duty it is to supervise the appropriation and allotment of the water to those diverting the same for beneficial use. *See* Idaho Code §§ 42-101, 42-103, and 42-226.

2. The Director, acting on behalf of the State of Idaho, has the statutory authority to control the appropriation and use of all surface and ground waters within the state in accordance with, but not limited to, Idaho Code §§ 42-101, 42-103, 42-202(1), 42-220, 42-226, 42-237a.g., 42-351, and 42-602 *et seq.*

3. The Director has responsibility for direction and control over the distribution of water in accordance with the prior appropriation doctrine as established by Idaho law within water districts to be accomplished through watermasters supervised by the Director, and subject to removal by the Director, as provided in chapter 6, title 42, Idaho Code.

4. Idaho Code § 42-604 mandates the Director form water districts as necessary to properly administer uses of water from public streams, or other independent sources of water supply, for which a court having jurisdiction thereof has adjudicated the priorities of appropriation. *In re Idaho Dept. of Water Res. Amended Final Order Creating Water Dist. No. 170*, 148 Idaho 200, 211, 220 P.3d 318, 329 (2009). Efficient distribution of water, in accordance with the legislative mandate, requires that IDWR implement sufficient administrative oversight to prevent conflicts from arising, where possible, and to furnish a framework of evenhanded oversight which allows for consistent planning by water users. *Id.* The combination and revision of water districts within Basin 37, parts 2 and 3 is necessary for the reasons set forth in Finding of Fact 13 and for the efficient administration of water rights in general.

5. Idaho Code § 42-1417 provides that the district court having jurisdiction over a general water rights adjudication may authorize the interim administration of water rights pursuant to chapter 6, title 42, Idaho Code, prior to the entry of a final decree, in accordance with Director's Reports filed with the court, with or without modification by the court, or in accordance with partial decrees that have superseded the Director's Reports.

6. All of the surface and ground water rights claimed in the SRBA and within Basin 37, parts 2 and 3, have been partially decreed or reported to the SRBA District Court.

7. Idaho Code § 42-227 provides that a water right permit may be issued, but shall not be required for appropriation of ground water for domestic and stock water purposes as defined under Idaho Code § 42-111.

8. Idaho Code § 42-113 provides that a water right permit may be issued, but shall not be required for appropriation of water for the in-stream watering of livestock.

9. Idaho Code § 42-706 provides that the Director may create, revise the boundaries of, or abolish a water measurement district or combine two or more water measurement districts by entry of an order if such action is required in order to properly administer uses of the water resource.

10. Much of the oral testimony from the hearing and the written testimony received after the hearing focused on the creation of a separate water district for the Camas drainage that would include both surface and ground water rights, including rights from WD37A and WD37C. Reasons that water users cited for creation of a separate district are listed in Finding of Fact 19.

11. The Department concludes that a separate water district for the Camas Creek drainage composed of surface water rights may provide for proper administration of surface water rights. The Department concludes that the small number of surface water rights in the drainage that are required to be administered with other rights in Basin 37 as described in Finding of Fact 20 may not justify including Camas drainage surface water rights in a large water district. The Department concludes that administration of these limited numbers of rights can be accomplished by a watermaster in a separate Camas drainage water district working in coordination with the watermaster from WD37 and with both watermasters working under the direction of the Director.

12. The Department concludes that the Camas drainage aquifer system is characteristically different from the Upper Wood River Valley aquifer system but the aquifer systems are hydraulically connected to each other and the Big Wood River². The Department agrees with testimony that the amount of ground water use from the two aquifer systems are different and water resource issues in the two areas may vary. The Department also agrees with testimony that conjunctive administration of surface and ground water rights in the Wood River basin is likely imminent. The Department does not conclude that ground water rights in the Camas drainage are immune to conjunctive administration simply because ground water use is less or because the drainage has not yet been included in the development of a ground water model.

13. Although ground water rights in both the Camas drainage and the Upper Wood River Valley and Silver Creek drainages may need to be conjunctively administered together with surface water rights in Basin 37, the Department concludes that the limited number of ground water rights and wells in the Camas drainage can be administered properly by including them with surface water rights in a separate Camas drainage water district that is under the direction and control of the Director.

14. The Department adopts this structure with some hesitation because conjunctive administration of water rights in Basin 37 may be more challenging when the water rights are in separate water districts and because many ground water diversions in the Camas drainage are not yet in full compliance with Department measurement orders. The Department would prefer to place the Camas drainage in a well established operational water district such as WD37 that has experienced staff, equipment and other resources rather than start a new water district that has no existing staff or resources. If ground water or surface water rights in the Camas drainage cannot be administered or properly measured in a separate water district, then the Director may abolish the district, revise the boundaries of the district or combine the district with another water district in accordance with Idaho Code §42-604.

15. Much of the oral testimony from the hearing and the written testimony received after the hearing also focused on the creation of a separate water district for ground water rights in the Upper

² Bartolino and Adkins, 2012. Hydrogeologic Framework of the Wood River Valley Aquifer System, South-Central Idaho, USGS Report 2012-5053, p. 26; and Wlaton, W.C., 1962. Ground Water Resources of Camas Prairie, Camas and Elmore Counties, Idaho, USGS Water Supply Paper 1609, pp. 1, 20, and 42-43.

Wood River Valley and the Silver Creek/Bellevue triangle drainage area. Reasons that water users cited for creation of a separate district are listed in Finding of Fact 24.

16. Testimony was provided opposing the proposed combination of ground water and surface water rights in a water district due to concerns that “conjunctive administration of surface and ground water rights is imminent and is an inherently adversarial process” which will “bleed over into the business of WD37.” Water districts are limited to administration of water rights, including measurement and regulation of diversions. Adversarial tensions between ground water and surface water users resulting from potential conjunctive administration of water rights should not negatively affect water district operations given the limited regulatory scope of the water district and the fact that conjunctive administration is guided by separate processes outlined in the Conjunctive Management Rules (CMR’s) (IDAPA 37.03.11). The Department agrees with the testimony of Kevin Lakey, WD37 watermaster, which notes that decisions regarding conjunctive administration will be made and enforced by the Director. Conjunctive administration will not be resolved within the venues or forums of a combined water district. Moreover, the CMRs have been implemented and mitigation has been successfully implemented within WD130 without disruption to the operations of that water district despite the fact that both surface water and ground water rights are included in the district.³

17. Additional testimony suggested that it may be “legally impossible to address potential delivery calls from holders of senior surface water rights and potential mitigation requirements of junior ground water right holders if surface and ground water users are combined in one water district” and that “management and potential administrative conflicts should be explained before combining surface and ground water rights in one district.” This testimony appears to confuse conjunctive administration issues with the narrow and limited regulatory scope of water district operations. Again, conjunctive administration and mitigation has been implemented “legally” in WD130 where surface water and ground water rights coexist. The Department proposed combining ground water rights and surface water rights in one district for the reasons stated in Finding of Fact 13. The Department is statutorily obligated to create or modify water districts largely to provide a regulatory structure to address water distribution problems and minimize potential conflicts. Water districts are not authorized to address potential mitigation requirements of junior ground water right holders but they are authorized to enforce mitigation requirements that may be required pursuant to orders of the Director under the CMRs. Potential mitigation requirements must be addressed by the holders of junior ground water rights working independent from a water district and preferably through a ground water district organized in accordance with chapter 52, title 42, Idaho Code.

18. Witnesses opposed combining ground water rights with surface water rights in a water district because surface water use is significantly more than ground water use in the proposed district and surface water users may out vote ground water users under the alternative method of voting allowed under Idaho Code § 42-605(4). The testimony cited concerns that the interests of ground water users will not be represented “because implementing conjunctive administration in the Big Wood River Basin will be contentious.” The Department notes that voting at annual water district meetings is limited to the adoption of a budget, election of a watermaster and treasurer, selection of an advisory committee and adoption of resolutions related to the operation of the water district. Conjunctive administration issues and decisions will not be subject to voting at annual water district meetings. Moreover, the concern that ground water users will be outvoted or “unrepresented” discounts the fact that about 100 ground water rights have been included in WD37 and WD37M for a number of years. The Department is not aware of complaints or concerns from those ground water users regarding “unrepresented” interests or control by

³ WD130 includes ground water rights in the ESPA overlying Basins 36, 37 and 41 and surface water rights from the Thousand Springs area overlying the ESPA and Basins 36 and 37.

surface water users. Additionally, the holders of many ground water rights in the proposed combined water district also hold surface water rights in WD37 or WD37M.⁴ It is not clear that the interests of ground water users would be poorly represented when so many ground water users also own surface water rights that are presently administered by WD37/37M.

19. Witnesses opposed the proposed combination of ground water and surface water rights in a water district because ground water users may not be adequately represented on an advisory committee due primarily to the disparity in the amount of water use between surface and ground water users. Idaho law does not vest specific power in an advisory committee. The committee provides advice to the watermaster, the Director and the water users of the water district. The WD37/37M watermaster testified that the WD37/37M advisory committee representation is not based on the amount of water diverted but rather on geographical regions and types of beneficial water use. He added that if a combined district is formed, a steering committee will be selected to recommend, among other things, the organization of an advisory committee. The steering committee concept is consistent with the recommendation made by the Department during its presentation at the public hearing. The WD37/37M advisory committee chairman testified at the public hearing that he was confident that concerns about representation of ground water users on an advisory committee could be addressed. The Department concludes that an advisory committee can be selected that provides adequate representation of all water users in the proposed water district comprised of both surface water and ground water rights.

20. Witnesses testified that ground water rights in the Upper Wood River Valley and Silver Creek drainage should be placed in a separate water district because several water districts already exist in the ESPA that are composed primarily of ground water rights which provide a good model for ground water administration in the Big Wood River Basin. The Department acknowledges that there are several ESPA water districts that are limited to ground water rights but there is at least one ESPA water district, WD130, which includes both surface water and ground water rights. WD130 was created in 2002 when conjunctive administration of surface water and ground water rights within the district was imminent. Subsequently, conjunctive administration delivery calls have been made and the CMRs have been implemented. WD130 has functioned successfully despite contention among surface water and ground water users in the district. The Department recommends that ground water rights in the Upper Wood River Valley and Silver Creek drainage be combined with WD37 and WD37M because administration of the rights would be more efficient.

21. Witnesses testified that ground water rights in the Upper Wood River Valley and Silver Creek drainage should be placed in a separate water district due to concerns that water district administration costs can't be fairly allocated in a combined district. Specifically, a concern was expressed that ground water users "would wind up bearing a disproportionate cost of water district operations." In accordance with Idaho Code §42-610, water district costs are assessed to individual users based on the amount of water delivered. The WD37/37M advisory committee chairman testified at the public hearing that the current advisory committee members are concerned that surface water users could actually end up paying a disproportionate share of district costs because the costs of measuring the wells may be higher than expected since so many wells are not yet in compliance with the Department's ground water measurement order. The committee chairman testified that the WD37/37M advisory committee wishes to maintain the water district assessment rates. The Department's limited analysis indicates that if the WD37 2013 assessment rate were adopted and applied to both surface water and ground water deliveries in a combined water district, most ground water users would have an

⁴ Assessment records of the UWRWMD and WD37/37M show that about 41% of the water users assessed by the UWRWMD are also assessed by WD37/37M. A majority of the holders of large irrigation ground water rights in the UWRWMD also hold surface water rights in WD37/37M.

assessment that is less than or roughly equivalent to their 2013 UWRWMD assessment.⁵ While the testimony raised concerns about ground water users bearing a disproportionate share of district costs, no evidence was given to substantiate the concern.

22. Written testimony suggested that suggested the Department should have presented a budget for the proposed combined water district. Chapter 6, title 42, Idaho Code does not require the Department to present a proposed budget when creating a water district, modifying the boundaries of a water district or combining two or more water districts. Rather, Idaho Code § 42-605 requires that the water users at an annual water district meeting must adopt a budget. The Department presented information at the hearing suggesting that a steering committee be formed consisting of affected ground water users and members from the WD37/37M advisory committee to consider a budget that could be presented at the first annual meeting of a combined water district. Department representatives at the public hearing cautioned about the appropriateness of the Director dictating a budget to the users in contrast with the requirements of § 42-605. The Department representative stated at the hearing that the current budgets for WD37/37M were adequate for administration of surface water rights, but the budget needed for administration and on-going measurement of ground water rights might need to be somewhat higher than the 2013 UWRWMD budget. The Department finds that combining the 2013 WD37/37M and UWRWMD budgets and deliveries, or estimate of deliveries for the UWRWMD, would result in an assessment rate that is similar to the 2013 WD37/37M and UWRWMD assessment rates.

23. Witnesses suggested the ground water model for the Upper Wood River and Silver Creek/Bellevue triangle area must be completed before ground water and surface water rights can be combined in a single water district. Again, this testimony appears to confuse conjunctive administration issues with the narrow and limited regulatory scope of water district operations. Completion of a ground water model is not a legal requirement or prerequisite for including both surface water and ground water rights in one water district. The Department has created several water districts in the State that include both surface and ground water rights without having a ground water model completed.

24. Based upon the above statutory authorities, the order of the SRBA District Court authorizing the interim administration of water rights pursuant to chapter 6, title 42, Idaho Code, and the record in this proceeding, the Director should take the following actions:

- i. Combine WD37 and WD37M into one water district to be designated as WD37;
- ii. Combine ground water rights in the Upper Wood River Valley and the Silver Creek/Bellevue triangle area with surface water rights in a combined WD37 to regulate water rights, and protect senior priority water rights in Basin 37;
- iii. Create a separate water district to administer both surface and ground water rights in the Camas Creek drainage including water rights from WD37A and WD37C to regulate water rights, and protect senior priority water rights in Basin 37; and
- iv. Abolish the UWRWMD.

⁵ This was determined by applying the WD37 2013 assessment rate to reported annual water use from certain municipal providers and 2013 water use from several UWRWMD metered ground water irrigation wells. The 2013 minimum assessment rate for the UWRWMD was over \$50 whereas the minimum assessment rate in WD37 and WD37M was only \$40. Given the significantly larger proportion of surface water use in a combined district, many of the smaller ground water users would be subject to a minimum rate assessment not to exceed \$50.

ORDER

IT IS HEREBY ORDERED that:

1. Water District No. 37 and Water District No. 37M are hereby combined as one water district together with all ground water rights located within the boundaries of the combined water district but outside the boundaries of the ESPA and Water District No. 130 as shown in the map appended hereto as Attachment A, except water rights used for domestic and stock water purposes as defined by Idaho §§ 42-111 and 42-1401A(11) and water rights used for in-stream watering of livestock as defined by Idaho Code § 42-113. The combined water district shall be designated as Water District No. 37, Big and Little Wood Rivers, and shall become effective January 6, 2014. The map attached hereto as Attachment B shows the boundaries of Water District Nos. 37 and 37M prior to the districts being combined pursuant to this Preliminary Order.
2. Water District No. 37 shall include ground water and all streams tributary to the Big Wood River and Little Wood River except Camas Creek and tributaries, and shall exclude Water District No. 37N (Upper Little Wood River and tributaries), Water District No. 37-O (Muldoon Creek and tributaries) and Water District No. 37U (Fish Creek and tributaries), and the lower portion of the Malad River and tributaries downstream and west of the point where the boundary common to Township 6 South and Range 13 East and Township 6 South and Range 14 East crosses the Malad River (approximately where Interstate 84 crosses the Malad River). The map attached hereto as Attachment B shows the locations of Water District Nos. 37-N, 37-O and 37-U.
3. The annual meeting of Water District No. 37 shall be held on January 6, 2014 to elect a watermaster, select an advisory committee, if desired, and set a budget for operating the district. The Director will send a separate notice to the holders of water rights in the water district providing a reminder of the meeting date and announcing the time and location for the meeting.
4. The water users attending the Water District 37 annual meeting shall adopt one budget for administration and measurement of both surface water rights and ground water rights. Ground water rights that are subject to assessment shall be assessed in the same manner as surface water rights and in accordance with the provision of chapter 6, title 42, Idaho Code. In cases where water delivery records do not exist for water rights, the assessments must be based on a reasonable estimate of water use during the previous season or seasons, not exceeding five seasons.
5. Water District No. 37-B is created to include all surface water and ground water rights in the Camas Creek drainage in Basin 37 as shown in the map appended hereto as Attachment A. Water District No. 37A and Water District No. 37C shall be merged with Water District 37-B. Water District 37-B shall exclude water rights used for domestic and stock water purposes as defined by Idaho §§ 42-111 and 42-1401A(11) and water rights used for in-stream watering of livestock as defined by Idaho Code § 42-113. The map attached here to as Attachment B shows the boundaries of former Water District Nos. 37-A and 37-C.
6. As soon as practicable in calendar year 2014, the holders of water rights within Water District No. 37-B shall meet at a date, time and place to be announced by the Director to conduct its annual meeting to elect a watermaster, select an advisory committee, if desired, and set a budget for operating the district.

7. The Director shall issue a separate order requiring the installation of measuring devices and controlling works for surface water right diversions within Water District No. 37-B.

8. The Director shall consider combining all or portions of Water District No. 37-B with Water District No. 37 if Water District No. 37-B does not comply with the provisions of chapter 6, title 42, Idaho Code or if a majority of water users in the water district do not comply with existing or future orders of the Department requiring water measurement devices or controlling works.

9. The watermasters for Water District Nos. 37 and 37-B shall perform the following duties in accordance with guidelines, direction, and supervision provided by the Director:

- a. Measure, collect, and record the diversions under water rights;
- b. Administer and enforce water rights in priority; and
- c. Curtail unauthorized or excessive diversions as necessary (i.e., any diversion without a water right or in excess of the elements or conditions of a water right).
- d. Coordinate delivery by priority of rights that do not enjoy the benefits of any separate administration provisions as decreed in the SRBA.

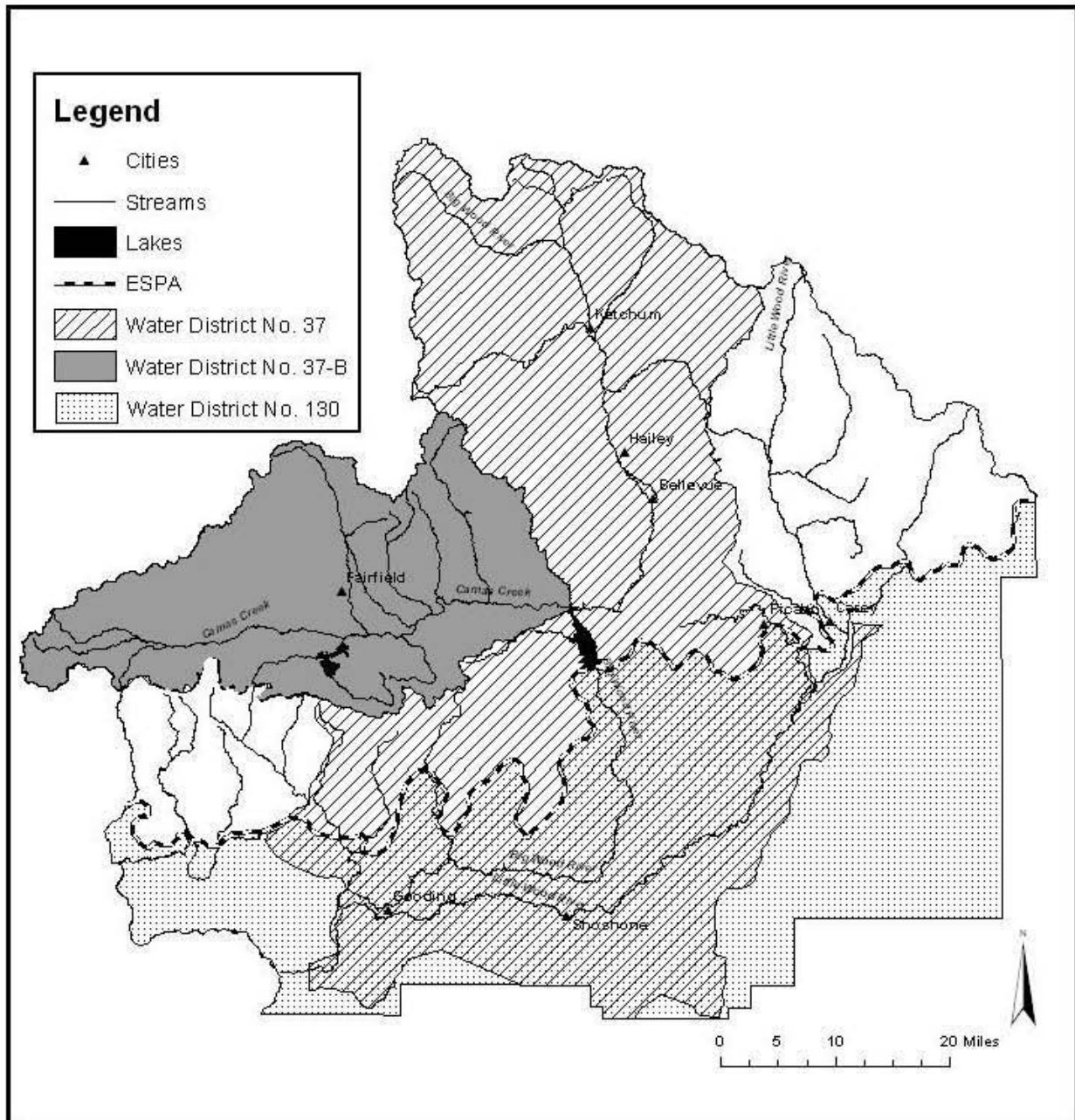
IT IS FURTHER HEREBY ORDERED that:

1. The Upper Wood Rivers Water Measurement District is hereby abolished effective December 31, 2013. The measurement district will continue to operate in accordance with chapter 7, title 42, Idaho Code, until December 31, 2013. The map attached hereto as Attachment B shows the boundaries of the measurement district.

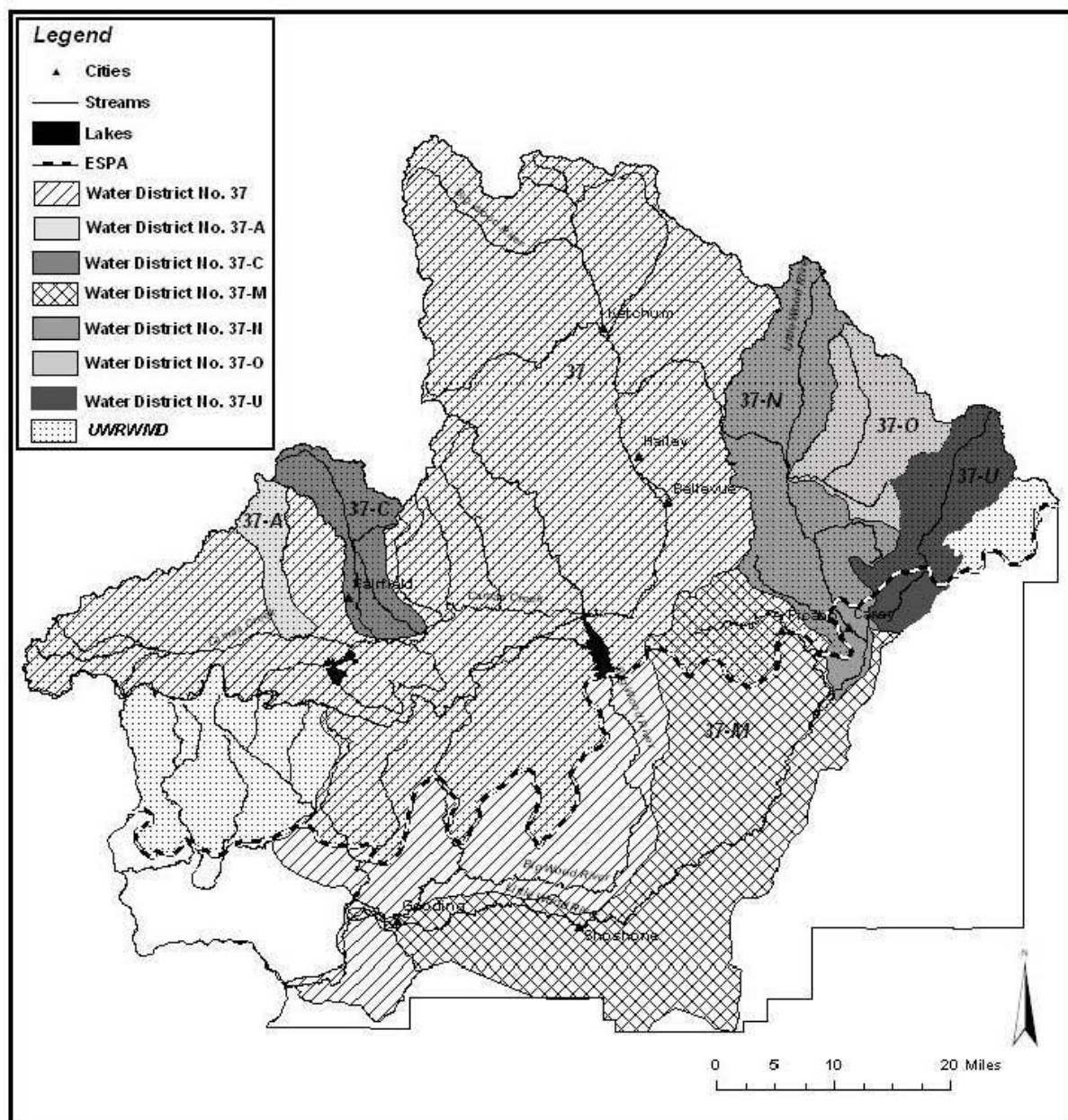
DATED this 17th day of September, 2013.


Allen Merritt
Hearing Officer

ATTACHMENT A
Water District No. 37 and Water District 37-B Pursuant to Preliminary Order



Attachment B
Basin 37 Water Districts and Measurement District Prior to Preliminary Order



EXPLANATORY INFORMATION TO ACCOMPANY A PRELIMINARY ORDER

(To be used in connection with actions when a hearing was held)

The accompanying order is a **Preliminary Order** issued by the Idaho Department of Water Resources (Department) pursuant to section 67-5243, Idaho Code. **It can and will become a final order without further action of the Department unless a party petitions for reconsideration or files an exception and brief as further described below:**

PETITION FOR RECONSIDERATION

Any party may file a petition for reconsideration of a preliminary order with the hearing officer within fourteen (14) days of the service date of the order as shown on the certificate of service. **Note: the petition must be received by the Department within this fourteen (14) day period.** The hearing officer will act on a petition for reconsideration within twenty-one (21) days of its receipt, or the petition will be considered denied by operation of law. See section 67-5243(3) Idaho Code.

EXCEPTIONS AND BRIEFS

Within fourteen (14) days after: (a) the service date of a preliminary order, (b) the service date of a denial of a petition for reconsideration from this preliminary order, or (c) the failure within twenty-one (21) days to grant or deny a petition for reconsideration from this preliminary order, any party may in writing support or take exceptions to any part of a preliminary order and may file briefs in support of the party's position on any issue in the proceeding to the Director. Otherwise, this preliminary order will become a final order of the agency.

If any party appeals or takes exceptions to this preliminary order, opposing parties shall have fourteen (14) days to respond to any party's appeal. Written briefs in support of or taking exceptions to the preliminary order shall be filed with the Director. The Director retains the right to review the preliminary order on his own motion.

ORAL ARGUMENT

If the Director grants a petition to review the preliminary order, the Director shall allow all parties an opportunity to file briefs in support of or taking exceptions to the preliminary order and may schedule oral argument in the matter before issuing a final order. If oral arguments are to be heard, the Director will within a reasonable time period notify each party of the place, date and hour for the argument of the case. Unless the Director orders otherwise, all oral arguments will be heard in Boise, Idaho.

CERTIFICATE OF SERVICE

All exceptions, briefs, request for oral argument and any other matters filed with the Director in connection with the preliminary order shall be served on all other parties to the proceedings in accordance with Rules of Procedure 302 and 303.

FINAL ORDER

The Department will issue a final order within fifty-six (56) days of receipt of the written briefs, oral argument or response to briefs, whichever is later, unless waived by the parties or for good cause shown. The Director may remand the matter for further evidentiary hearings if further factual development of the record is necessary before issuing a final order. The Department will serve a copy of the final order on all parties of record.

Section 67-5246(5), Idaho Code, provides as follows:

Unless a different date is stated in a final order, the order is effective fourteen (14) days after its service date if a party has not filed a petition for reconsideration. If a party has filed a petition for reconsideration with the agency head, the final order becomes effective when:

- (a) The petition for reconsideration is disposed of; or
- (b) The petition is deemed denied because the agency head did not dispose of the petition within twenty-one (21) days.

APPEAL OF FINAL ORDER TO DISTRICT COURT

Pursuant to sections 67-5270 and 67-5272, Idaho Code, if this preliminary order becomes final, any party aggrieved by the final order or orders previously issued in this case may appeal the final order and all previously issued orders in this case to district court by filing a petition in the district court of the county in which:

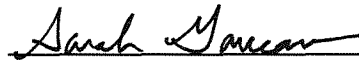
- i. A hearing was held,
- ii. The final agency action was taken,
- iii. The party seeking review of the order resides, or
- iv. The real property or personal property that was the subject of the agency action is located.

The appeal must be filed within twenty-eight (28) days of this preliminary order becoming final. See section 67-5273, Idaho Code. The filing of an appeal to district court does not itself stay the effectiveness or enforcement of the order under appeal.

CERTIFICATE OF SERVICE

I HEREBY CERTIFY that on this 19th day of September 2013, the above and foregoing document was served on each individual or entity on the service list for this matter on file at the Idaho Department of Water Resources, 322 East Front Street, Boise, Idaho, and posted on the Department's website: www.idwr.idaho.gov. Each individual or entity on the service list was served by placing a copy of the above and foregoing document in the United States mail, postage prepaid and properly addressed.

Documents served: **Preliminary Order In the Matter of the Proposed Combination of the Water District Nos. 37, 37A, 37C and 37M and the Inclusion of Both Surface Water and Ground Water Rights in the Combined Water District; and in the Matter of Abolishing the Upper Wood Rivers Water Measurement District**



Sarah Garceau
Technical Records Specialist
Idaho Department of Water Resources

4 BROS DAIRY AND 4 BROS DAIRY INC
425 N 250 W
SHOSHONE ID 83352

4 HANS SORENSEN FARMS LLC
1509 N 470 E
SHOSHONE ID 83352

7 MILE RANCH LLC
PO BOX 2756
HAILEY ID 83333

A SWEET PLACE LLC
ROUTE 1 BOX 2070
CORRAL ID 83322

ACKER PARTNERSHIP
BOX 177
KETCHUM ID 83340

RUTH M ADAMS
1596B S 2050 E
GOODING ID 83330

CHERYL L AND RODDY L ADAMS
548 N 650 W
SHOSHONE ID 83352

JOSEPH J AND LISA M ADAMSKI
PO BOX 603
FAIRFIELD ID 83327

ADARE TRUST
PO BOX 4377
KETCHUM ID 83340

AIRPORT WEST BUSINESS PARK OWNERS ASSN INC
C/O ENGEL & ASSOCIATES LLC
101 BULLION ST E STE 3C
HAILEY ID 83333

CONNIE R AND WILLIAM R AITKEN
50 GANNETT RD
BELLEVUE ID 83313

ALAN D BILLER & NANCY T MELTON REVOCABLE TRUST
557 WEST CRESCENT DR
PALO ALTO CA 94301

ALDECOA FAMILY LTD PARTNERSHIP
12 MESA VISTA DR
BOISE ID 83705

DONNA ALFS
PO BOX 850
KETCHUM ID 83340

JACKSON W ALLRED II AND LAURIE K ALLRED
33 VOLZ LN
530 S 50 W
BURLEY ID 83318

DAN ALLRED
PO BOX 6392
KETCHUM ID 83340

BURDETTE L AND MADELINE L AMEND
PO BOX 681
BELLEVUE ID 83313

AMERICAN FARM MORTGAGE CO INC
8901 GREENWAY COMMONS PL STE 200
LOUISVILLE KY 40220

JACK AND JEANNE ANDERSEN
4135 N 900 W
PLEASANT VIEW UT 84414

LOUIS D AND TERESA R ANDERSEN
PO BOX 141
FAIRFIELD ID 83327

CYNTHIA E AND GREGORY L ANDERSON
147 S ST CHARLES RD
SALMON ID 83467

RICHARD B ANDERSON
PO BOX 2284
HAILEY ID 83337

ALEX AND HOLLY ANHDER
117 N 2100 E
ROBERTS ID 83444

ANN S MC CAW REVOCABLE TRUST
ANN HOLDEN SCOTT TRUSTEE
3701 SACRAMENTO ST #174
SAN FRANCISCO CA 94118

AQUARIUS SAW LLC
3131 LAS VEGAS BLVD
LAS VEGAS NV 89109

RON ARAMBARRI
PO BOX 1572
LINCOLN MT 59639

KAREN A AND WILLIAM ARKOOSH
2005 US HWY 26
GOODING ID 83330

CARRIE R AND JOHN W ARKOOSH
2368 E 1775 S
GOODING ID 83330

ASPEN GROVE HOME OWNERS ASSN
PO BOX 286
SUN VALLEY ID 83353

ASPEN KNOLL LTD PARTNERSHIP AND DAVID E AND MARY
JANE CONGER
PO BOX 545
KETCHUM ID 83340

DONALD B AND JOAN H ANDERSON
PO BOX 121
SUN VALLEY ID 83353

ANDREA F STEVENSON, ELIZABETH BRETT STEVENSON, JOHN
STEVENSON JR AND JUSTIN FLOOD STEVENSON TRUST NO 5
C/O WILLIAM BOZZUTO TRUSTEE
PO BOX 1200
BELLEVUE ID 83313

ANIMAL SHELTER OF WOOD RIVER VALLEY
PO BOX 1496
HAILEY ID 83333

TONYA APPEGATE
15181 WOODLAND HEIGHTS RD
AMITY OR 97101

GARY DAVID ARAMBARRI
1231 S 2375 W
SYRACUSE UT 84075

JANET LEE ARGYLE
PO BOX 848
CHALLIS ID 83226

GEORGE F AND LIZABETH ARKOOSH
2159 E 1700 S
GOODING ID 83330

BRAD AND LORIE ARMSTRONG
3727 E DAKOTA DR
PHOENIX AZ 85044

ASPEN HOLLOW HOMEOWNERS
PO BOX 1832
SUN VALLEY ID 83353

ASPEN LAKES CANAL CO AND SPECK & AANESTAD
C/O JAMES P SPECK
PO BOX 987
KETCHUM ID 83340

BRADLEY J ASTLE AND JOYCE A PIERCE
1796 E 1800 S
GOODING ID 83330

DON R AND JUDY H ATKINSON
PO BOX 190
KETCHUM ID 83340

AUBREY SPRING RANCH LLC
130 TREASURE LANE
HAILEY ID 83333

JEREMY AUCH
116 W HWY 26
SHOSHONE ID 83352

AVONMORE WEST INC
1341 FILLMORE ST STE 200
TWIN FALLS ID 83301

AWALT PARTNERSHIP
PO BOX 392
SAN MIGUEL CA 93451-0392

B BAR B INC AND KATHERINE BRECKENRIDGE
PO BOX 685
PICABO ID 83348

BRIAN L BALLARD AND GARY D BABBITT
PO BOX 1617
BOISE ID 83701

DONNA AND W L MATHEWS AND DORIS BABIN
7630 CHERRYWOOD DR
BOISE ID 83704

FRED R BACKER
C/O BACKER JOLIEM & JAMES
165 HYNDMAN VIEW DR
HAILEY ID 83333

KENNETH A BACKSTROM
RT 1 BOX 2080
FAIRFIELD ID 83327

JILL AND THOMAS BAILEY
PO BOX 4535
HAILEY ID 83333

RUSTY AND CAROLYN BAIRD
4 ROPES END RD
BELLEVUE ID 83313

DENNIS M BAKER
250 S BEECHWOOD STE 120
BOISE ID 83709

DOUG BAKER
PO BOX 3158
HAILEY ID 83333

JOHN S AND STACIE L BALLARD
1764 S 2100 E
GOODING ID 83330

ARLENE AND ROBERT S BALLARD
PO BOX 162
SHOSHONE ID 83352

NANCY P BALLARD
PO BOX 207
GOODING ID 83330

GERTRUDE BALLARD
PO BOX 332
FAIRFIELD ID 83327

PHILIP E AND WINNIE A BALLARD
RT 1 BOX 1330
FAIRFIELD ID 83327

PAUL AND RUBY BANCROFT
C/O BRAD STEPANEK
756 N 350 E
SHOSHONE ID 83352

BARBARA FARMS LLC
PO BOX 424
SHOSHONE ID 83352

BARBER FAMILY ASSOC LP AND GEORGE AND JULEE BARBER
PO BOX 1449
EDMONDS WA 98020

CHRISTY AND LONNIE BARBER
PO BOX 381
BELLEVUE ID 83313

BARBER FAMILY ASSOC LP
C/O GEORGE BARBER
PO BOX 1449
EDMONDS WA 98020

SHIRLEY BARER
PO BOX 478
BELLEVUE ID 83313

ALBERT P BARKER
BARKER ROSHOLT & SIMPSON LLP
PO BOX 2139
BOISE ID 83701-2139

BARKER LIVING TRUST AND RICHARD C BARKER
FOUR SEASONS RESIDENCES
765 MARKET ST PH2G
SAN FRANCISCO CA 94103

CURTIS DARRELL BARKER
PO BOX 163
INKOM ID 83245

EARNEST PATRICK AND IRENE FAYE BARKER
PO BOX 284
BELLEVUE ID 83313

BARKER ROSHOLT & SIMPSON LLP
1010 W JEFFERSON STE 102
PO BOX 2139
BOISE ID 83701-2139

BARKER ROSHOLT & SIMPSON LLP
ATTN TRAVIS L THOMPSON
195 RIVER VISTA PL, STE 204
TWIN FALLS ID 83301-3029

BARKER ROSHOLT & SIMPSON LLP
ATTN: PAUL L ARRINGTON
195 RIVER VISTA PLACE, STE 204
TWIN FALLS ID 83301-3029

LLOYD R BARNES
206 POLO CLUB LN
BELLEVUE ID 83313

CAROLE AND DELBERT BARNETT
1780 S 2050 E
GOODING ID 83330

DEBORAH BARR AND MYER BERLOW
214 WILLOW ZINC SPUR
HAILEY ID 83333

BARRIE FAMILY PARTNERS
PO BOX 793
BELLEVUE ID 83313

BARRIE FAMILY PARTNERS
PO BOX 793
KETCHUM ID 83340

BARBARA A BARRY
PO BOX 1197
BELLEVUE ID 83313

KAREN AND RAY BARSHICK
PO BOX 2312
RANCHO SANTA FE CA 92067

BASELINE CANAL CO, BASELINE PUMP ASSN # 1 AND
BASELINE PUMP ASSN # 2
C/O CATHY ZACCARDI
137 BASELINE RD
BELLEVUE ID 83313

AUDREY BASHAW
195 E MORGAN ST
PERRIS CA 92370

BASHAW FAMILY TRUST, LOVING SPRINGS RANCHES LP AND
THE BRETT & PATRICIA BASHAW FAMILY TRUST
C/O GERALD BASHAW
PO BOX 767
PICABO ID 83348

JOHN H BASS
145 HYNDMAN VIEW DR
HAILEY ID 83333

BAVARIAN VILLAGE WATER CO
C/O DENNIS HANGGI
PO BOX 1322
KETCHUM ID 83340

JOHN BAZOVSKY
PO BOX 914
HAILEY ID 83333

THOMAS M BECK
3515 CRESCENT RIM DR
BOISE ID 83706

BEEMAN & ASSOC
409 W JEFFERSON ST
BOISE ID 83702

DAVID A BELL
PO BOX 13
KETCHUM ID 83340-0013

BELLEVUE CEMETERY MAINTENANCE DISTRICT
C/O FAYE BARKER
PO BOX 156
BELLEVUE ID 83313

BASELINE RANCH OWNERS ASSN
PO BOX 762
SUN VALLEY ID 83353

AUDREY AND GERALD B BASHAW
PO BOX 767
PICABO ID 83348

CAROL AND FRANK BASHISTA
PO BOX 360
HAGERMAN ID 83332

BAUSCHER RANCH INC
C/O RANDY BAUSCHER
111 PELICAN POINT
RUPERT ID 83350

BAYHORSE ROAD TRUST
210 BAYHORSE RD
PO BOX 662
BELLEVUE ID 83313

DEAN AND JULIE BEAUDET
PO BOX 1229
HAILEY ID 83333

JOSEPHINE P BEEMAN
BEEMAN & ASSOCIATES PC
409 W JEFFERSON ST
BOISE ID 83702

DOROTHY G AND THEODORE BELL
16633 SE 17TH ST
BELLEVUE WA 98008

BELLE RANCH LLC
PO BOX 3322
HAILEY ID 83333

BELLEVUE FARMS LANDOWNERS ASSN
PO BOX 774
BELLEVUE ID 83313

GERHARDT J BENCK JR AND LA VON M BURGESS-BENCK
710 NORTH FLORENCE
SHOSHONE ID 83352

PAT AND VICKIE BENNETT
BOX 113
HILL CITY ID 83337

BECKY R AND K C BENSON
117 TREASURE LN
HAILEY ID 83333

BARBARA BENSON
97 FREEDOM LOOP
BELLEVUE ID 83313-5013

JUDY AND ROBERT BERGDAHL
PO BOX 2077
BIGFORK MT 59911

BARRY BERNSTEN
110 DELANCEY ST
PHILADELPHIA PA 19106

BIG SKY DAIRY
2395 S 1500 E
GOODING ID 83330-5247

BIG SKY DAIRY
PO BOX 407
JEROME ID 83338

BIG WOOD CANAL CO
C/O LYNN HARMON
MANAGER
409 N APPLE ST
SHOSHONE ID 83352

BIG WOOD GOLF COURSE LLC
PO BOX 87
SUN VALLEY ID 83353

BIG WOOD RANCH LLC
PO BOX 9180
SEATTLE WA 98109

ALEX AND MARY BILBAO
893 4 MILE RD
GOODING ID 83330

JAMES H BILBRAY
3128 BEACH VIEW CT
LAS VEGAS NV 89117

BETTY AND BILL GRANT
BILL & BETTY GRANT LIVING TRUST
PO BOX 370
HAILEY ID 83333

BLACK BUTTE HILLS LLC, DIAMOND/SOLDIER PROPERTIES LLC,
SMOKEY DOME LLC, SOUTH COVE VENTURES AND SV RANCH LLC
C/O GREGORY VIK
PO BOX 1607
BELLEVUE WA 98009

LAWRENCE J BLACKBURN
PO BOX 2802
KETCHUM ID 83340

BLAINE COUNTY RECREATION DISTRICT
1050 FOX ACRES RD ROOM 100
HAILEY ID 83333

BLAINE COUNTY SCHOOL DISTRICT #61 AND US BANK
NATIONAL ASSN
118 W BULLION ST
HAILEY ID 83333

JAMES R BLANDFORD
PO BOX 6451
DENVER CO 80206

BLISS POINT CATTLE INC AND KIM AND TOM FAULKNER
1636 CLOVER CREEK RD
BLISS ID 83314

ROBERTA AND RONALD A BLOOM
1033 POINT VIEW ST
LOS ANGELES CA 90035

JACOB AND RUTH BLOOM
C/O ARNOLD FRAM CPA
11620 WILSHIRE BLVD STE 580
LOS ANGELES CA 90025

BLUEGROUSE RIDGE HOMEOWNERS ASSN
PO BOX 3510
KETCHUM ID 83340

VIVIAN R AND WILLIAM D BOBBITT
116 GLENDALE RD
BELLEVUE ID 83313

DONALD V AND GAY S BOECKER
19610 TOWER HILL RD
LEONARDTOWN MD 20650-4619

DEBORRA L AND WILLIAM C BOHRER
PO BOX 606
KETCHUM ID 83340

ROBERT G BOLAN
PO BOX 3861
COEUR D ALENE ID 83814

KIM L TANNAHILL AND SANDRA L BOLAN
PO BOX 3296
HAILEY ID 83333

HAROLD AND MILDRED BOLTE AND NANCY LOTT
1327 S 1700 E
GOODING ID 83330

HELEN H BOND
120 BASELINE RD
BELLEVUE ID 83313

GUY BONNIVIER
311 GLENDALE RD
BELLEVUE ID 83313

BOOTJACK DAIRY M & D LLC AND BOOTJACK LTD
PARTNERSHIP
PO BOX 856
SHOSHONE ID 83352

MICHAEL P BORDENKIRCHER
87 BASELINE RD
BELLEVUE ID 83313

HELEN F BOULTON AND KENNETH KIMBALL
PO BOX 457
BELLEVUE ID 83313

JANIE L AND ROBERT F BOUTTIER
PO BOX 476
BELLEVUE ID 83313

BOXALL ESTATE
C/O CALVIN KIDNEY
WELLS FARGO TRUST
PO BOX 2618
BOISE ID 83701

CAROL S AND ROBERT D BOYD
PO BOX 1043
FAIRFIELD ID 83327

BARBARA L AND RICHARD J BOYER
PO BOX 405
BELLEVUE ID 83313

PATRICK A AND SHARON BOYLE
PO BOX 3248
HAILEY ID 83333

WILLIAM J BOZZUTO
PO BOX 909
HAILEY ID 83333

CAROLYN M BRADLEY AND GLENN S BRADLEY JR
890 W 620 N
SHOSHONE ID 83352

DONALD GLENN AND SANDRA S BRADSHAW
1690 E 1500 S
GOODING ID 83330

DOUGLAS J BRADSHAW
TRUSTEE UNDER WILL OF ELEANOR REINHEIMER
PO BOX 7180
GARDNERVILLE NV 89460

DARLENE M AND FRANKLIN L BRAMON
536 W BOGUS VIEW DR
EAGLE ID 83616

ENNICE AND RONALD BRAUN
675 N 75 W
SHOSHONE ID 83352

DONALD T BRAY
BRAY VALLEY RANCH
PO BOX 94
BLISS ID 83314-0094

BRETT & JUSTIN STEVENSON TRUST
WILLIAM BOZZUTO TRUSTEE
PO BOX 1200
BELLEVUE ID 83313

BROADFORD POLO SUBDIVISION OWNERS ASSN
C/O DON MILLER
201 POLO CLUB LN
BELLEVUE ID 83313

BROCKWAY ENGINEERING PLLC
C/O CHARLES BROCKWAY
2016 WASHINGTON ST N, STE 4
TWIN FALLS ID 83301

BROCKWAY ENGINEERING PLLC
C/O ERICK POWELL
2016 N WASHINGTON ST STE 4
TWIN FALLS ID 83301

BROCKWAY ENGINEERING PLLC
C/O GREG SULLIVAN
2016 N WASHINGTON ST STE 4
TWIN FALLS ID 83301

BROCKWAY ENGINEERING PLLC
C/O ZACH LATHAM
2016 N WASHINGTON ST STE 4
TWIN FALLS ID 83301

STEPHEN W BROOKS
PO BOX 570
GOODING ID 83330

CATHY M AND JOCK S BROWN
140 FRIEDMAN LN
BELLEVUE ID 83313

HAROLD O AND JEANNE SADLER BROWN
1642 HWY 46
GOODING ID 83330

DARLENE L BROWN
1838 ALTURAS DR
TWIN FALLS ID 83301

DEBRA L BROWN
1853 E 1500 S
GOODING ID 83330

ANN A AND PHILIP A BROWN AND KOOSH INC
2177 E 1375 S
GOODING ID 83330

PATRICK D BROWN
335 BLUE LAKES BLVD N
TWIN FALLS ID 83301

FREDERICK W, JANE AND JUBAL BROWN
348 GLENDALE RD
BELLEVUE ID 83313

BECKY A BROWN
757 N 4TH ST
BELLEVUE ID 83313

BROWN RANCH INC
247 GLENDALE RD
BELLEVUE ID 83313

BARBARA AND CARL BROWNING
PO BOX 259
BELLEVUE ID 83313

MICHAEL BRUNETTO
340 GLENDALE RD
BELLEVUE ID 83313

BUFFY R AND MICHAEL B BRUNKER
126 FRIEDMAN LN
BELLEVUE ID 83313

RANDALL C BUDGE
RACINE OLSON NYE BUDGE & BAILEY CTD
PO BOX 1391
POCATELLO ID 83240-1391

BUICH 1995 FAMILY TRUST
PO BOX 1084
ALAMO CA 94507-1084

MARJEAN AND MARK C BULCHER
2381 BOWLIN LN
TWIN FALLS ID 83301

EDWARD BULCHIS
2855 42ND AVE W
SEATTLE WA 98199

HENRY AND JANNE BURDICK
C/O JAMES SPECK, ATTORNEY
PO BOX 987
KETCHUM ID 83340

JOHN A BURKE
PO BOX 201
KETCHUM ID 83340

DAVID W AND JULIE ANN LUNTE AND J TODD BURKHART
1411 E 4400 N
BUHL ID 83316

ELIZABETH J BURNETT
PO BOX 1045
SHOSHONE ID 83352-1045

DAN H BURTON
25875 N 106TH WAY
SCOTTSDALE AZ 85255

MARY E AND VERNILE J BYINGTON
118 1ST AVE S
GANNETT RT
BELLEVUE ID 83313

C W & R H GARDNER FAMILY TRUST LTD PARTNERSHIP,
KATHRYN ALLRED, ROBERT E AND RUTH HELEN GARDNER
AND MARY ELLEN DRASHNER
PO BOX 1200
HAILEY ID 83333

BARBARA CALL AND JENNIFER ANNE MAXWELL
PO BOX 4
ROSS CA 94957

CAMAS DEVELOPERS LLC
2010 SILVERCREEK LN
BOISE ID 83706

GEORGE EDWARD AND MARGARET J CAMERON
PO BOX 177
BELLEVUE ID 83313

LESLIE H AND THELMA CLOUGHTON CAMERON
PO BOX 326
BELLEVUE ID 83313

RALPH CAMPANALE
PO BOX 947
SUN VALLEY ID 83353

LYNN H AND THOMAS B CAMPION
C/O JAMES P SPECK ESQ
PO BOX 987
KETCHUM ID 83340

LYNN H CAMPION
PO BOX 3710
HAILEY ID 83333

CANADIAN CLUB HOMEOWNERS ASSN
PO BOX 3179
KETCHUM ID 83340

CARLO AND JENNIFER CANNELL
PO BOX 3459
JACKSON WY 83001

KAREN AND WILLIAM J CANTRELL
1131 BROADFORD RD
HAILEY ID 83333

DENNIS J AND JENNIFER M CARD, JAMES R LASKI AND
MAUREEN M MCCANTY
48 TOWNSEND GULCH RD
BELLEVUE ID 83313

PAUL AND POLLY CARNEY
291 S 2800 E
PAUL ID 83347

LAVERN AND OPAL CARPENTER
485 W 4 MILE RD
SHOSHONE ID 83352

GREG C CARR
975 MEMORIAL DR #1008
CAMBRIDGE MA 02138

KATHRYN AND PAUL CARSON
PO BOX 2103
KETCHUM ID 83340

H PHILLIP CASH
607 E 200 S
FAIRFIELD ID 83327

JUDY CASH
PO BOX 880
BELLEVUE ID 83313

CONRAD V AND MINNA H CASSER
PO BOX 3073
HAILEY ID 83333

KATJA AND MARK D CASSON
341 EASTRIDGE DR
HAILEY ID 83333

JAMES AND PATRICIA CASTLE
580 BURMAH RD
SHOSHONE ID 83352

CAT TRACK SELECT LLC
PO BOX 3308
HAILEY ID 83333

CATHERINE S DAWSON REVOCABLE TRUST
526 MALL DR
SCHAUMBURG IL 60173

CATHERINE SULLIVAN FAMILY TRUST
100 BEACH VIEW DR
VERO BEACH FL 32963

CATTLE-LACK RANCH HOMEOWNERS ASSN, JANICE CORSO-
HARRIS 2004 REVOCABLE TRUST AND MICHAEL A HARRIS
2004 REVOCABLE TRUST
11 PURPLE SAGE LN
BELLEVUE ID 83313

JERRY L AND MURIEL J CAVEN AND ROYAL FORK
RESTAURANT CORP
6874 FAIRVIEW AVE
BOISE ID 83704

CG ELKHORN GOLF LLC
HENNESSY CO
BOX 2720
KETCHUM ID 83340

CHANEY CREEK RANCH LLC
C/O ELIZABETH K GRAY
PO BOX 3175
KETCHUM ID 83340

WENDY W CHASE
86 LA JARA RANCH TRAIL
GALISTEO NM 87540

BOB AND ROBERT L CHRISTENSEN
PO BOX 1177
HAILEY ID 83333

CHURCH OF THE NAZARENE
6TH & IDAHO
GOODING ID 83330

CITY OF BELLEVUE
PO BOX 825
BELLEVUE ID 83313-0449

CITY OF GOODING
308 5TH AVE W
GOODING ID 83330

CITY OF KETCHUM
PO BOX 2315
KETCHUM ID 83340

CITY OF SHOSHONE
PO BOX 208
SHOSHONE ID 83352

C D AND MYRA JOAN SLUDER AND CENTRAL IDAHO
CONSTRUCTION INC
PO BOX 868
BELLEVUE ID 83313

JOHN F CHAMBERS
1822 S 2050 E
GOODING ID 83330

CHARLES M LUTHER ESTATE
C/O NANCY BALLARD PR
PO BOX 207
GOODING ID 83330-0207

CHERYL L WELSH REVOCABLE TRUST AND JOHN L WELSH
REVOCABLE TRUST
PO BOX 4967
HAILEY ID 83333

CHRISTYE NEGREPONTE TESTAMENTARY TRUST
CATHY ZACCARDI TRUSTEE
137 BASELINE RD
BELLEVUE ID 83313

JAMES N CIMINO AND NATURAL ENERGY RESOURCES INC
PO BOX 448
SUN VALLEY ID 83353

CITY OF FAIRFIELD
PO BOX 336
FAIRFIELD ID 83327

CITY OF HAILEY
115 S MAIN ST #H
HAILEY ID 83333

CITY OF RICHFIELD
210 N MAIN ST
PO BOX 97
RICHFIELD ID 83349

ANITA K AND TERRY L CLARK
PO BOX 308
CAREY ID 83320

BRIAN AND JENNIFER J CLARK
PO BOX 428
FAIRFIELD ID 83327

LESLIE CLARKE
PO BOX 1768
KETCHUM ID 83340

CLEAR CREEK LLC
PO BOX 4380
KETCHUM ID 83340-4380

TAMERA L CLIFFORD
PO BOX 153
SUN VALLEY ID 83353

CLIFFORD S TOONE TRUST
C/O MARK TOONE, TTEE
2096 E 1500 S
GOODING ID 83330

CLIFFSIDE HOMEOWNERS ASSN INC
PO BOX 3175
KETCHUM ID 83340

ADAM CLINGERMAN, ANDREA HOUCK, PASQUALE MIELE
AND SEBASTIAN NARDECCHIA
2411 OLD CROW CANYON RD STE 105
SAN RAMON CA 94583

CLOVERLY RANCH LLC
145 GOLDEN EAGLE DR
HAILEY ID 83333

DAVID COATES
PO BOX 322
GOODING ID 83330

EARL R AND SUSAN COHEN
PO BOX 4942
KETCHUM ID 83340

COLD SPRINGS WATER CO INC
C/O AMY ELLE
PO BOX 152
KETCHUM ID 83340

DIANE F AND PATRICK R COLEE
600 6TH ST S
KIRKLAND WA 98033

CAROLYN F AND GARY R COLEMAN
1651 SHOESTRING RD
GOODING ID 83330

JOHN K COLGATE JR
295 MILL HILL RD
MILL NECK NY 11765

WILLIAM B COLLINS
574 EAST FORK RD
HAILEY ID 83333

COLLISTER INC
4414 S GEKELER LN
BOISE ID 83716

JAMES P AND JOAN CONGER
PO BOX 62
SUN VALLEY ID 83353

COOK ELECTRIC CO INC
PO BOX 1071
TWIN FALLS ID 83303-1071

LARRY M COOPER
PO BOX 3780
KETCHUM ID 83340

COOPER FAMILY GIFT TRUST
26 DROMARA RD
ST LOUIS MO 63124

COTTONWOOD CREEK HOMEOWNERS ASSN
C/O LAURIE SANDERS
56 MONTAGUE RD
WESTHAMPTON MA 01027

COUNTY OF CAMAS
PO BOX 430
FAIRFIELD ID 83327

COVE CREEK LTD PARTNERSHIP
PO BOX 2277
KETCHUM ID 83340

COYOTE BLUFF HOMEOWNERS ASSN INC AND RODNEY
KEGLEY
PO BOX 2063
KETCHUM ID 83340

COLLEEN CRAIN AND JAMES E LIESENFELD
PO BOX 2456
KETCHUM ID 83340

DAWN AND FLOYD CRANDALL
RT 1 BOX 1000
FAIRFIELD ID 83327

GEORGE C CRANDLEMIRE
PO BOX 2780
SUN VALLEY ID 83353

ROY E CRAWFORD
165 PHILLIP RD
WOODSIDE CA 94062

MICHAEL C CREAMER
GIVENS PURSLEY LLP
277 N 6TH ST STE 200
PO BOX 2720
BOISE ID 83701-2720

CRICHTON CREEK LTD PARTNERSHIP AND OPAL AND
WILLIAM M DAVIS
RT 1 BOX 1210
FAIRFIELD ID 83327

DEBORA AND PAUL CRIPPA
PO BOX 1453
SUN VALLEY ID 83353

ROGER E CRIST
PO BOX 2326
KETCHUM ID 83340

BARBARA AND JOHN CRISTOBAL
875 N 18 E ST
MOUNTAIN HOME ID 83647

JERRY L CROCE
30 FREEDOM LOOP
BELLEVUE ID 83313

DAVID L AND LINDA C CROPPER
400 N MAIN ST #2
HAILEY ID 83333-8416

CROY CANYON RANCH FOUNDATION INC
PO BOX 640
HAILEY ID 83333

CROY CREEK PROPERTIES LLC
PO BOX 1330
HAILEY ID 83333

ALFREDO CRUZ AND JUANA LAGUNAS
2210 CALIFORNIA ST #21
GOODING ID 83330

ANN C CUEVA
241 S 600 W
HEYBURN ID 83336

ANTHONY C AND JUDY L D ANGELO
PO BOX 3267
KETCHUM ID 83340

D L EVANS BANK
PO BOX 87
TWIN FALLS ID 83303

LEWIS M AND NITA F DAVENPORT
1798 S 2050 E
GOODING ID 83330

DAVINA & HOLLY LTD PARTNERSHIP
C/O WEBB LANDSCAPE INC
162 GLENDALE RD
BELLEVUE ID 83313

MICHELLE M DAVIS
930 ARROW WOOD CT
TWIN FALLS ID 83301

MONTIE S DAY
PO BOX 1045
SHOSHONE ID 83352

AARON M DE CHEVRIEUX AND STEPHANIE J EISENBARTH
PO BOX 615
BELLEVUE ID 83313

GARY A AND HELEN DE MOSS
PO BOX 61
BLISS ID 83314

PAUL A AND TANA L DEAN
40 FREEDOM LP
BELLEVUE ID 83313

DEAN R ROGERS INC
28 HILLSIDE RANCH RD
BELLEVUE ID 83313

DEER CREEK RANCH INC
ATTN JOHN FLYNN
PO BOX 3090
NEWPORT BEACH CA 92658

ROBERT DEL SIGNORE
PO BOX 2923
HAILEY ID 83333

ARLIN KELLY AND JANET LYNN DENNIS
RT 1 BOX 1278
FAIRFIELD ID 83327

DENZEL R & MARY S ROWLAND REVOCABLE LIVING TRUST
5195 E YACHT CLUB
EDEN UT 84310

DESERT ROSE RANCH INC
130 11TH AVE S
BUHL ID 83316

DFT PROPERTIES
RANNEY E DRAPER & MARK P DRAPER, TRUSTEES
567 SAN NICOLAS DR, SUITE 340
NEWPORT BEACH CA 92660

DIAMOND A LIVESTOCK INC AND FAULKNER BROTHERS
HYDRO
1997 S 1875 E
GOODING ID 83330

DIAMOND K REVOCABLE LIVING TRUST AND LYNN
BONTRAGER LLC
PO BOX 2092
KETCHUM ID 83340

CHRISTOPHER C PUCHNER AND DIBBLE FAMILY TRUST
PO BOX 74848
FAIRBANKS AK 99707-4848

DOLORES PRITCHARD AND RICHARD N DICK
C/O JAMES B FLEIG
PO BOX 869
KETCHUM ID 83340-0869

ANDREW DIGES
PO BOX 834
BELLEVUE ID 83313

BRYAN K DILWORTH AND KELLY M ROCKWOOD
PO BOX 3600
KETCHUM ID 83340

MICHELE AND RUSSELL DION
PO BOX 1029
BELLEVUE ID 83313

OTIS DISBENNETT JR
PO BOX 316
BELLEVUE ID 83313

CONNIE M AND REESE L DIXON
2114 E 1775 S
GOODING ID 83330

DONNA F TUTTLE TRUST, RIVERVIEW CLOVERLY IRRIGATION
INC AND STARWEATHER SUBDIVISION PROPERTY OWNERS
C/O JAMES P SPECK
PO BOX 987
KETCHUM ID 83340-0987

DONNA F TUTTLE TRUST DATED JANUARY 5 1
DONNA F TUTTLE TRUSTEE
C/O JAMES P SPECK
PO BOX 987
KETCHUM ID 83340

JOHN M AND PAMELA DONOGHUE
18881 SE 42ND ST
ISSAQUAH WA 98027

C JAY DORR
PO BOX 2590
HAILEY ID 83333

JEANNE I DORR
PO BOX 331
HAILEY ID 83333

DOUBLE V LLC
1587 E 3100 S
WENDELL ID 83355

ELLEN DOUTHIT
PO BOX 51
BELLEVUE ID 83313

DANA L AND ETHEL LYNN DOWERS
2560 RIVIERA DR
LAGUNA BEACH CA 92651

LINDA O DRAKE
PO BOX 4885
KETCHUM ID 83340

CHARLES PATRICK AND MARY JANE MICHAEL, HEIER DREYER
PROPERTIES AND ROBERT P DREYER
PO BOX 4917
KETCHUM ID 83340

DONNA AND WILLIAM DRIER
121 LOWER BROADFORD RD
BELLEVUE ID 83313

IRWIN GENE AND RUTH D DRUSSEL
307 BASE LINE RD
BELLEVUE ID 83313

DRY CREEK PARTNERS
C/O BILL NOVINGER
1598 E 1330 S
GOODING ID 83330

DRY LOT LLC
C/O WOODY FRIEDLANDER
116 VALLEY CLUB DR
HAILEY ID 83333

SHARON DUDLEY
385 E AVE D
WENDELL ID 83355

EDMUND W DUMKE
PO BOX 569
SUN VALLEY ID 83353

STEVE GOWER AND TRACY DUNLAP
PO BOX 644
BELLEVUE ID 83313

LEWIS WILLIAM DYE
555 S THIRD ST
COLUMBUS OH 43215

ELLEN SUZANNE NASVIK AND JASON EDWARD DYKHOUSE
PO BOX 3412
HAILEY ID 83333

EAGLE CREEK IRRIGATION CO
C/O EVERETT DAVIS
PO BOX 1965
SUN VALLEY ID 83353

EAGLES NEST INVESTMENT GROUP LLC
C/O RANDALL C BUDGE
PO BOX 1391
POCATELLO ID 83204-1391

ESTATE OF JAMES IVAN EAKIN AND GRACE EAKIN
28 PERO RD
PO BOX 296
BELLEVUE ID 83313

EASTFIELD AT BELLEVUE FARMS HOA
PO BOX 301
BELLEVUE ID 83313

ECCLES FLYING HAT RANCH LLC AND ECCLES WINDOW ROCK
RANCH LLC
PO BOX 3028
SALT LAKE CITY UT 84110

ECD INC
C/O EDMUND DUMKE-PRESIDENT
3416 PLAZA DEL GRANDE
LAS VEGAS NV 89102

GARY AND GLENNA R EDEN
414 N 800 W
SHOSHONE ID 83352-5422

DOROTHY M AND GERALD C EDINBOROUGH
214 ORCHARD DR
GOODING ID 83330

EDWARD A CUTTER 1973 TRUST
EDWARD A CUTTER TRUSTEE
PO BOX 7330
KETCHUM ID 83340

EDWIN & RUTHIE MOSHER TRUST
C/O EDWIN I MOSHER
TRUSTEE
1232 CORSICA DR
PACIFIC PALISADES CA 90272

CAROL E AND WILLIAM D EITREIM
PO BOX 1661
SUN VALLEY ID 83353

ELEANOR C DEVENS REVOCABLE TRUST
68 BEACON ST
BOSTON MA 02108

CINDY AND KJELL ELISSON
PO BOX 2072
HAILEY ID 83333

ELIZABETH KEMMERER GRAY REVOCABLE TRUST
PO BOX 7608
KETCHUM ID 83340

ELIZABETH MATHIEU REVOCABLE LIVING TRUST
30 PRESCOTT AVE
BRONXVILLE NY 10708

EMB HAILEY LP A CALIFORNIA LTD PARTNERSHIP
9533 W PICO BLVD STE A
LOS ANGELES CA 90035

MICHAEL S ENGL
PO BOX 2500
SUN VALLEY ID 83353

POPPY M ENGLEHARDT
10965 HWY 75
BELLEVUE ID 83313

SHANNON ERWIN
BOX 1112
BELLEVUE ID 83313

ANITA L AND WILLIAM C ESHLEMAN
7045 OAK HILLS RD
OAK HILLS CA 92345

ESTATE OF LLOYD C & MARILYN P MOORE
C/O WESLEY MOORE
184 GANNETT RD
BELLEVUE ID 83313

BILL AND SUSAN ETHRIDGE
448 N 150 E
SHOSHONE ID 83352

JANET AND MELVIN B EVANS
42 BUTTERCUP RD
HAILEY ID 83333

EVERETT COATES ESTATE
RT 1 BOX 1140
FAIRFIELD ID 83327

EVERGREEN VENTURES LLC
3805 HUNTS POINT RD
HUNTS POINT WA 98004

RICHARD W FAIRFIELD
PO BOX 1356
HAILEY ID 83333

DAN S FAIRMAN MD AND MELYNDA KIM STANDLEE
FAIRMAN
106 RIVERGROVE LN
HAILEY ID 83333

FARMERS NATIONAL BANK WENDELL OFFICE
PO BOX 546
WENDELL ID 83355

DON J AND DORLA FARNES AND WEST SHORE SUBDIVISION
HOMEOWNERS ASSN
PO BOX 207
SHOSHONE ID 83352

LOIS GLENDA AND WILBUR E FARNWORTH
17923 US HWY 20
BELLEVUE ID 83313

GILBERT L FARR
329 BAYHORSE RD
BELLEVUE ID 83313

HELEN M FASSETT
PO BOX 273
SUN VALLEY ID 83353

FAULKNER LAND & LIVESTOCK CO INC
1989 S 1875 E
GOODING ID 83330

ALI FAYED
ROUND ISLAND
50 PEAR LANE FIELD POINT CIRCLE
GREENWICH CT 06830

FEDERAL LAND BANK OF SPOKANE
PO BOX TAF-C5
SPOKANE WA 99220-4005

FERGUSON BERMAN TRUST OF 1994
PO BOX 4103
HAILEY ID 83333

CINDY W AND JAY C FERIS
PO BOX 3148
HAILEY ID 83333

GREG AND LEE ANN FERRIS
13 W CARBONATE
HAILEY ID 83333

DELORES L AND JOHN B FERY AND PRISCILLA B WOODS
18433 US HWY 20
BELLEVUE ID 83313

FIELDS LAND CO
RT 1 BOX 2085
FAIRFIELD ID 83327

ARLENE AND MILTON FIFE
PO BOX 322
HAILEY ID 83333

JAMES K AND SANDRA D FIGGE
PO BOX 4995
KETCHUM ID 83340

FIGGE REALTY LLC
PO BOX 4365
KETCHUM ID 83340

FIR GROVE LTD PARTNERSHIP
C/O SHARRON N PRESLEY
6688 EAST MONTGOMERY RD
KING HILL ID 83633

FIRST AMENDED & RESTATED HOBSON REVOCABLE TRUST
110 RED CLOUD WAY
HAILEY ID 83333

FIRST BANK OF IDAHO
PO BOX 9000
KETCHUM ID 83340

FIRST FEDERAL SAVINGS BANK
383 SHOSHONE ST N
TWIN FALLS ID 83303

FISH CREEK RESERVOIR CO INC
PO BOX 282
CAREY ID 83320

FISHER & ASSOC
6640 HWY 200 E
MISSOULA MT 59802

TIMOTHY AND TRACY FLAHERTY
165 GOLDEN EAGLE DR
HAILEY ID 83333

JACK W FLAMMER JR
PO BOX 3923
HAILEY ID 83333

CHRIS AND JACKIE FLANIGAN
HC 64 BOX 8028
KETCHUM ID 83340

JAYNE D MURREL REVOCABLE TRUST AND MICHAEL FLINN
C/O THE MURREL COMPANY
2439 W COAST HWY STE 200
NEWPORT BEACH CA 92663

LEA FLOCCHINI MORGAN AND MARK MORGAN
PO BOX 1191
HAILEY ID 83333

DIANA AND JOHN D FLOOD
QUEENS CROWN RANCH
19249 HWY 20
PICABO ID 83348

MARY ALICE FLORENCE AND OTTO FLORENCE JR
143 9TH AVE E
TWIN FALLS ID 83301

PATRICK AND WENDY FLORENCE
PO BOX EE
TWIN FALLS ID 83303

FLOWERS BENCH LLC
PO BOX 4932
KETCHUM ID 83340

FLOWERS MILL SUBDIVISION ASSN INC
PO BOX 5921
KETCHUM ID 83340

CHARLES TIMOTHY FLOYD AND LUBOFF SENAVSKY
PO BOX 3229
HAILEY ID 83333

FLYING HEART RANCH II SUBDIVISION OWNERS ASSN
PO BOX 2163
HAILEY ID 83333

MARILYN C AND RICHARD D FLYNN
1956 E 1550 S
GOODING ID 83330

CHARLES T AND KATHLEEN MAHER FOLEY
1 EAST END AVE APT #12
NEW YORK NY 10075

ALVIN SHOEMAKER, CYNTHIA AND KENT FORGEON,
SHOEMAKER PROPERTIES AND THE 1995 RALPH K & B
PATRICIA FORGEON REVOCABLE TRUST
PO BOX 2172
KETCHUM ID 83340

PAUL R FOSNOT
837 LAUREL AVE
POMONA CA 91767

ROBERT EARL FOSNOT
PO BOX 290
BELLEVUE ID 83313

FOUR SEASONS HOMEOWNERS ASSN
PO BOX 4576
KETCHUM ID 83340

BONNIE FOX
PO BOX 352
FAIRFIELD ID 83327

FRANK A BORNEMAN & DOROTHY E BORNEMAN FAMILY
PARTNERSHIP
2242 E 1700 S
GOODING ID 83330

EDITH FREDRICKSON
17833 U S HWY 20
BELLEVUE ID 83313

ROBERT G FRIEDMAN
215 DENSLOW AVE
LOS ANGELES CA 90049

JOHN I FROSTENSON
RT 1 BOX 1020
FAIRFIELD ID 83327

FROSTENSON REVOCABLE TRUST
59649 OKANAGAN LN
BEND OR 97702

FRUEHLING FAMILY LLC, FRUEHLING FAMILY TRUST AND
WILLIAM AND WILLIAM A FRUEHLING
PO BOX 4508
KETCHUM ID 83340

MARK AND SHERYL FULLMER
PO BOX 1822
HAILEY ID 83333

GALENA ENGINEERING INC
C/O JEFF LOOMIS, P.E.
317 N RIVER ST
HAILEY ID 83333

JOHN AND MELANIE A GALLUP
1776 S 2050 E
GOODING ID 83330

HODELIA AND OSCAR E GARCIA
1896 S 2100 E
GOODING ID 83330

CLOYD W, KATHRYN AND RUTH HELEN GARDNER
PO BOX 470
BELLEVUE ID 83313

RICHARD GARIEPY
106 DEER RUN RD
KETCHUM ID 83340

KATE L LEAH AND MATTHEW A GARNER
203 N MAIN
BELLEVUE ID 83313

REX AND SHEILA DANIELS GARNER
PO BOX 1987
SUN VALLEY ID 83353

SCOTT P GARVIN
PO BOX 3467
HAILEY ID 83333

GARY & JUDITH FRUGARD TRUST
PO BOX 346
BELLEVUE ID 83313

GARY L & LUCY C OSBORNE FAMILY LTD PARTNERSHIP AND
GARY L AND LUCY C OSBORNE
1776 S 1625 E
GOODING ID 83330

GARY N NELSON & CO
1031 EASTLAND DR STE 3B
TWIN FALLS ID 83301

ELIZABETH W AND MARK T GATES
BESSEMER SECURITIES CORP
630 FIFTH AVE
NEW YORK NY 10111

BARBARA L GEHRKE AND WILLIAM J GEHRKE III
230 BROADFORD RD
HAILEY ID 83333

JOSEPH T GENNARO
2385 GAMAY COMMON
LIVERMORE CA 94550

GEORGE T MERRILL & MARILYN K MERRILL FAMILY TRUST
735 VICTOR AVE
CHUBBUCK ID 83202

GEOSENSE
C/O NICHOLAS JOSTEN
2742 SAINT CHARLES AVE
IDAHO FALLS ID 83404

MELISSA AND SHON GERARD
1040 CHERRY HILL DR
HAILEY ID 83333

GARY GILL
PO BOX 621
BRUNEAU ID 83604

GIMLET PROPERTY OWNERS ASSN INC
C/O ANN HENDER
PO BOX 6671
KETCHUM ID 83340

ARLENE AND VERNON GIVENS
RT 1 BOX 480
BELLEVUE ID 83313

GIVENS PURSLEY LLP
ATTN CHRISTOPHER H MEYER
601 W BANNOCK ST
PO BOX 2720
BOISE ID 83701

GIVENS PURSLEY LLP
C/O JEFFREY C FEREDAY
601 W BANNOCK ST
PO BOX 2720
BOISE ID 83701

GIVENS PURSLEY LLP
CHRISTOPHER H MEYER
601 W BANNOCK
PO BOX 2720
BOISE ID 83701

GLANBIA FOODS INC
1728 S 2300 E
GOODING ID 83330

GLENDALE FARM LLC AND LINDA AND PETER D VAN DER
MEULEN
PO BOX 537
HAILEY ID 83333

ANNETTE, CORY ALAN, KALI M, PAUL T AND TOM
GOICOECHEA
PO BOX 193
HAILEY ID 83333

JON H GOLDBERG AND LARA V WILLIAMS
20 W 64TH ST APT 35L
NEW YORK NY 10023

BEATRICE AND ELLIS GOOCH
724 W 620 N
SHOSHONE ID 83352

DEBRA AND WILLIAM B GORDON
179 ALBION AVE
WOODSIDE CA 94062

KATHLEEN CHASE AND RICHARD W GOULEY
PO BOX 1051
HAILEY ID 83333

JAY AND NANCY GOVE
PO BOX 2819
KETCHUM ID 83340

ELMAR GRABHER
C/O JOE KOENIG
PO BOX 486
KETCHUM ID 83340

GIVENS PURSLEY LLP
PO BOX 2720
BOISE ID 83701-2720

GLENDALE CONSTRUCTION INC
CHARLES DOUGLAS SLUDER
PO BOX 868
BELLEVUE ID 83313

MARY A LETOURNEAU AND RAYMOND H GOETTSCHE
PO BOX 556
BELLEVUE ID 83313

CHERYL AND JOE GOITIANDIA
PO BOX 2275
KETCHUM ID 83340

GOLDEN EAGLE RANCH HOMEOWNERS ASSN INC
C/O SUN COUNTRY MANAGEMENT
PO BOX 1932
KETCHUM ID 83340

R THOMAS AND RAYMOND THOMAS GOODRICH AND
REBECCA LEA PATTON
1001 FOREST AVE
PALO ALTO CA 94301

ERIC REMAIS AND JOYCE GORDON
PO BOX 7
HAILEY ID 83333

JAY AND NANCY GOVE
10664 HWY 75
BELLEVUE ID 83313

BETTE AND MARK GOWER
PO BOX 912
BELLEVUE ID 83313

ELMAR GRABHER
PO BOX 507
SUN VALLEY ID 83353

GRACIES DINER LLC
PO BOX 6570
KETCHUM ID 83340

STELLA GRAY
PO BOX 906
SUN VALLEY ID 83353

GREENHORN OWNERS ASSN
C/O JAMES P SPECK ATTY
PO BOX 987
KETCHUM ID 83340

GREGORY R BLOOMFIELD REVOCABLE TRUST
PO BOX 757
HAILEY ID 83333

GRIFFIN RANCH HOA, GRIFFIN RANCH P U D SUBDIVISION HOA INC
AND STEVEN D HOLZMAN TRUST DTD
C/O JAMES P SPECK
SPECK & AANESTAD
PO BOX 987
KETCHUM ID 83340

ROBERT B AND SARAH L GRILL
3359 WILLOW WAY
TWIN FALLS ID 83301

SAMUEL M GROSSMAN
1703 W BETHANY HOME RD
PHOENIX AZ 85015

GULCH TRUST
HOWARD TROTT TRUSTEE
PO BOX 2908
KIRKLAND WA 98083-2908

VERONICA S GUYRE
PO BOX 141
LYME NH 03768

LESLIE L AND WANDA MAE HAAS
17402 S IBEX AVE
ARTESIA CA 90701

ELIZABETH K GRAY
C/O JAMES P SPECK ESQ
HOGUE SPECK & AANESTAD
PO BOX 987
KETCHUM ID 83340

LARRY G AND LUANNE GREEN
101 N MAIN ST
HAILEY ID 83333

GREENHORN OWNERS ASSN INC
PO BOX 3534
KETCHUM ID 83340

GREGORY RANCH LLC
C/O MILES STANISLAW
PO BOX 5749
KETCHUM ID 83340

JUDITH P GRIGSBY
PO BOX 254
BELLEVUE ID 83313

COREY C AND MINA GRISWOLD
10 OLD SAGE TRAIL
HAILEY ID 83333

GROVE CREEK ASSN
C/O WILLIAM SWANEY
PO BOX 2713
KETCHUM ID 83340

MATTHEW M AND PAUL M GUYRE
332 GLENDALE RD
BELLEVUE ID 83313

GWINN RICE RANCH INC
PO BOX 131
HILL CITY ID 83337

CRAIG S HADDEN
PO BOX 649
SHOSHONE ID 83352

FRITZ X HAEMMERLE
400 S MAIN ST STE 102
PO BOX 1800
HAILEY ID 83333

HAEMMERLE & HAEMMERLE
PO BOX 1800
HAILEY ID 83333

NINA M, RONALD A AND SHEILA HAGEN
41818 228TH AVE SE
ENUMCLAW WA 98022

HALBERT D LINDQUIST REVOCABLE TRUST
C/O TOM FURRIER
4542 E CAMP LOWELL STE 200
TUCSON AZ 85712

RANDY HALL
12965 SW MORGAN CT
BEAVERTON OR 97008

CLIFFORD HALLOWELL
BOX 159
FAIRFIELD ID 83327

VIRGIL W HAMPTON
1521 E 2200 S
GOODING ID 83330

HARDEE CONSTRUCTION & DEVELOPMENT CO
6477 FAIRVIEW AVE
BOISE ID 83704

ROBERT L HARRIS
HOLDEN KIDWELL HAHN & CRAPO
PO BOX 50130
IDAHO FALLS ID 83405-0130

RUTH L HARRISON
627 RIVER RD
BLISS ID 83314

FRITZ HAEMMERLE
THE ROARK LAW FIRM
409 N MAIN ST
HAILEY ID 83333

DUAINE HAGEN
HAGEN PROPERTIES LLC
323 RD 4 EU
MEETEETSE WY 82433

HAILEY CEMETERY MAINTENANCE DISTRICT
PO BOX 207
TWIN FALLS ID 83303-0207

JEFF HALL
12801 ELMORE RD
ANCHORAGE AK 99516

RYAN HALL
1327 S 1700 E
GOODING ID 83333

JENNIFER AND MICK HALVERSON
PO BOX 3722
HAILEY ID 83333

DENNIS HANGGI
PO BOX 1322
KETCHUM ID 83340

ALTA K AND DALE E HARRIS
1655 E 1600 S
GOODING ID 83330

LYNN H AND TIMOTHY H HARRIS
PO BOX 4512
KETCHUM ID 83340

ZANE G HARRISON
C/O RUTH L HARRISON
627 RIVER RD
BLISS ID 83314

HARRISON FAMILY RANCH LLC
508 PEACH ST
EMMETT ID 83617

ANDREA HARTOGENSIS
PO BOX 972
HAILEY ID 83333

DANIEL HAWLEY
PO BOX 49
KETCHUM ID 83340

DOROTHY L AND LOUIS S HAYWARD
1390 GALENA CT
TWIN FALLS ID 83301-3589

BRUCE AND LORNA HAZELTON
BOX 3794
HAILEY ID 83333

HEATH MARSHALL INC
PO BOX 250
POCATELLO ID 83204-0250

HEATHERLANDS HOMEOWNERS ASSN INC
PO BOX 3901
KETCHUM ID 83340-3901

HELIOS DEVELOPMENT LLC
C/O DDRM GREATPLACE
PO BOX 4151
PARK CITY UT 84060

KEITH ONEIL AND SANDRA R HELMICK
16 E INDIAN CREEK RD
BOISE ID 83716

HENDER 1993 REVOCABLE INTER VIVOS TRUST
DAVID HAMILTON HENDER AND
ANN MAY HENDER TRUSTEES
PO BOX 6671
KETCHUM ID 83340

HARRY S & DIANE J RINKER REVOCABLE TRUST, HARRY S
RINKER TRUST, RODRICK H RINKER AND WOOD RIVER
PROPERTIES INC
PO BOX 7250
NEWPORT BEACH CA 92658

CHRISTIE A HAUGH
113 TOWNSEND GULCH RD
BELLEVUE ID 83313

MEL HAYOB
BOX 2072
HAILEY ID 83333

JERRY P AND STEPHANIE A HAYWARD
20 TYLER DR
BELLEVUE ID 83313

HEART ROCK RANCH LLC
PO BOX 3724
HAILEY ID 83333

HEATHERLANDS HOMEOWNERS ASSN INC
PO BOX 1672
SUN VALLEY ID 83353

GARY HEINDEL AND JEANETTE SUTHERLIN
PO BOX 362
BELLEVUE ID 83313-0362

HELIOS DEVELOPMENT LLC
C/O EDWARD A LAWSON
PO BOX 3310
KETCHUM ID 83340

HEMINGWAYS BLIND LLC
36 BENNINGTON PL
NEW CANAAN CT 06840

JULIE AND TERRANCE HENEGHAN
16 ROPES END RD
BELLEVUE ID 83313

FAITH AND JOHN HENEGHAN
36 NATHANIEL WAY
MARSHFIELD MA 02050

DAVID B AND JACQUELINE B HENNESSY
PO BOX 5425
KETCHUM ID 83340

HENRICUS P BEEKWILDER FAMILY REVOCABLE TRUST
2687 TOWNSEND CT
SACRAMENTO CA 95864

LARRY L HENRIKSEN
106 CHESTNUT LN
PO BOX 189
BELLEVUE ID 83313

FRANCES A HENRIKSEN
PO BOX 189
BELLEVUE ID 83313

MARK W HENRY
182 GANNETT PICABO RD
BELLEVUE ID 83313

JOEL HEWSON
170 S MAIN SO 1600
SALT LAKE CITY UT 84101

HIAWATHA CANAL WATER USERS ASSN OF LATERAL OR
LATERALS
C/O DAVID CROPPER, CHAIRMAN
PO BOX 1604
HAILEY ID 83333

LOUISE AND THOMAS D HICKEY
PO BOX 2312
SUN VALLEY ID 83353

GIGI AND NOEL HICKS
RT 1 BOX 1094
FAIRFIELD ID 83327

HIGH TRACK LLC
JIM J, JIMMIE R, JO AN S AND KATHY M WALKER
PO BOX 400
BELLEVUE ID 83313

RONALD T HILL
PO BOX 24
CAREY ID 83320

CLAUDE G HINKLE
BOX 39
FAIRFIELD ID 83327

J FAYE AND LESLIE R HINZMAN
101 RIVERVIEW
BELLEVUE ID 83313

CECIL D AND CRAIG D HOBDEY
PO BOX 176
GOODING ID 83330

GARY HOFFMAN
PO BOX 1529
KETCHUM ID 83340

MARIANNE AND WALTER J HOFSTETTER
19185 HWY 20
PICABO ID 83348

GREG HOGAN
PO BOX 1795
KETCHUM ID 83340

TERRY G HOGUE
HOGUE SPECK & AANESTAD
PO BOX 460
HAILEY ID 83333

BRIANA AND MICHAEL D HOLLAND
1619 E 1400 S
GOODING ID 83330

DOUGLAS HAYES HOLLENBECK
PO BOX 2596
SUN VALLEY ID 83353

CAROL D HOLMAN AND EUGENE HOLMAN JR
PO BOX 1477
SUN VALLEY ID 83353

STEVEN D HOLZMAN
1161 VIRGINIA RD
SAN MARINO CA 91108

HONSINGER LAW PLLC
C/O CHARLES L HONSINGER
PO BOX 517
BOISE ID 83701

LESLIE AND MAURICE HORNOCKER
PO BOX 929
BELLEVUE ID 83313

RUPERT HOUSE
C/O TONY HOUSE
8119 N LEHMAN RD
SPOKANE WA 99217

HOWARD P TAEKMAN MD INC
JOHN MUIR MEDICAL CENTER TRAUMA OFFICE
1601 YGNACIO VALLEY RD
WALNUT CREEK CA 97598

JEFFREY C HUBER
5209 TURRET WAY
BOISE ID 83703

KAYSI SHARON AND RODNEY FRED HUBSMITH
PO BOX 65
RICHFIELD ID 83349

HULEN MEADOWS WATER CO
PO BOX 236
KETCHUM ID 83340-0236

DAVID AND NICOLE HULTS
1572 E 1700 S
GOODING ID 83330

WILLIAM B HURD
1323 S 1700 E
GOODING ID 83330

ROBERT G BARBARA A HUSOME
1794 E 1800 S
GOODING ID 83303-5094

HYNDMAN CREEK LLC
1290 AVENUE OF THE AMERICAS
NEW YORK NY 10104

IDAHO FOUNDATION FOR PARKS & LANDS INC
5657 WARM SPRINGS AVE
BOISE ID 83716-8700

IDAHO FOUNDATION FOR PARKS & LANDS INC
C/O CHAS MCDEVITT ATTY
420 W BANNOCK ST
PO BOX 2564
POCATELLO ID 83702

IDAHO POWER CO
C/O JON BOWLING
PO BOX 70
BOISE ID 83707

IDAHO RANCH LLC
2296 CHANNEL RD
NEWPORT BEACH CA 92661

MRS C IEST
2313 TERRACE DR
CALDWELL ID 83605

TINA IEST
C/O HELEN C TIDWELL
5700 S LINDER RD
MERIDIAN ID 83642

OFER INBAR
PO BOX 647
SHOSHONE ID 83352

INDIAN CREEK RANCH OWNERS ASSN INC
PO BOX 3411
HAILEY ID 83333-3411

DEBRA A AND JOHN N INFANGER
1821 S 1800 E
GOODING ID 83330

CLIFTON R AND RHONDA L IVERSON
PO BOX 1578
HAILEY ID 83333

IX NAY INVESTMENT TRUST
C/O F ALTMAN & COMPANY
9255 SUNSET BLVD STE 901
LOS ANGELES CA 90069

J R SIMPLOT CO
C/O TERRY UHLING
999 MAIN ST STE 1300
BOISE ID 83707

J R SIMPLOT CO
ENV AND REGULATORY AFFAIRS
ATTN: GRAY YOUNG OR TERRY UHLING
PO BOX 27
BOISE ID 83707-0027

JACQUELINE C LINDBERG 1995 REVOCABLE TRUST AND
THOMAS RINEY 1995 REVOCABLE TRUST
PO BOX 863
HAILEY ID 83333

JANIE G FLAMMER IDAHO PERSONAL RESIDENCE TRUST
2905 VIA LA SELVA
SANTA YNEZ CA 93460

JANSS FARMS
C/O PETER JANSS
PO BOX 99
BLISS ID 83314

JARED R WILLIAMS REVOCABLE TRUST
PO BOX 99658
SEATTLE WA 98139

DIANE JARMUSZ
PO BOX 3929
HAILEY ID 83333

MICHAEL AND STEPHANIE JASKOWSKI
PO BOX 2111
HAILEY ID 83333

JBB/AL HEREFORDS LLC
1993 S 1500 E
GOODING ID 83330

RAY O JEFFERSON
11854 HWY 75 S
HAILEY ID 83333-5106

BRENDA AND DAVID E JENSEN
1723 E 1250 S
GOODING ID 83330

RUSS JENSON
PO BOX 2767
KETCHUM ID 83340

CYNTHIA CRAMER JESINGER
PO BOX 111
SUN VALLEY ID 83353

JESSEN HOLDINGS LLC AND MICHAEL JESSEN
89 FREEDOM LP
BELLEVUE ID 83313

LETITIA A AND THOMAS J JOCHUMS
13225 HOLMES PT DR NE
KIRKLAND WA 98034

JOHANNA VAN GRIENSVEN SAMPLE TRUST
JOHANNA VAN GRIENSVEN SAMPLE TRUSTEE
1540 HEROIC RD
HAILEY ID 83333

CHARLES M AND CONNIE JOHNSON
11 QUIGLEY LN
HAILEY ID 83333

KARI S AND RANDY W JOHNSON
209 BAYHORSE RD
BELLEVUE ID 83313

CHRISTINA L AND DAVID E JOHNSON
PO BOX 2531
HAILEY ID 83333

CARL B JOHNSTON
3154 SORREL ST
LAS VEGAS NV 89146

RONALD E JONES
PO BOX 11
CORRAL ID 83322

ANGELIKA AND JAMES JONES
PO BOX 3592
HAILEY ID 83333

JONES CONSTRUCTION INC
PO BOX 1389
SUN VALLEY ID 83353-1389

JUDE P & JULIA MANDEVILLE DAMASCO TRUST
700 MONTE VISTA WAY
HALF MOON BAY CA 94019

LOUISA JANE H JUDGE
PO BOX 432
BELLEVUE ID 83313-0432

JUDY MARKEL LIVING TRUST
16902 LIGGETT ST
NORTHRIDGE CA 91343

JUSTICE DITCH CO
C/O FRANK ERWIN
711 EAST AVE N
HAGERMAN ID 83332

LOWREY HASCALL AND TAMI SIPE KAMMER
398 BROADFORD RD
BELLEVUE ID 83313

ROBERTA KAY
224 BRADFORD RD
HAILEY ID 83333-8443

GAIL GOODELL KEARNS
PO BOX 1262
HAILEY ID 83333

KETCHUM PRESBYTERIAN CHURCH
PO BOX 473
KETCHUM ID 83340

JEFF AND SHEILA KEYS
PO BOX 3034
HAILEY ID 83333

LINDA DIANE AND THEODORE KIEL
2537 RIVERSIDE DR
COLUMBUS IN 47201

ALAN L AND GLADYCE A KIME
59 W WOOD RIVER RD
SHOSHONE ID 83352

KING HILL IRRIGATION DISTRICT
C/O GARDNER GIB BROWN MGR
PO BOX 428
KING HILL ID 83633

CAROL AND HOWARD KNIGHT
PO BOX 774
HAILEY ID 83338

GLENN R KOCH
PO BOX 63
FAIRFIELD ID 83327

MICHAEL M AND PHYLLIS K KOCHERT
10230 W AMITY RD
BOISE ID 83709

JOSEF G KOENIG
PO BOX 486
KETCHUM ID 83340

JIM W AND LOIS M KOONCE
PO BOX 2015
HAILEY ID 83333

ROBERT KORB
KNEELAND KORB COLLIER & LEGG
PO BOX 249
KETCHUM ID 83340

KOSS FAMILY LTD PARTNERSHIP
PO BOX 277
HAILEY ID 83333

ROD KOTIGA
176 FRIEDMAN LN
BELLEVUE ID 83313

KOYLE HYDRO INC
PO BOX 455
GOODING ID 83330

CAROLE A AND DONALD E KRAHN
8471 RIFLEMAN
BOISE ID 83704

JIMMY D AND MARIANNE KRAMER
RT 1 BOX 1065
FAIRFIELD ID 83327

KENNETH L KRAUS
11355 W OLYMPIC BLVD 10TH FLOOR
LOS ANGELES CA 90064

BRENDA AND TODD KUHN
930 W 520 N
SHOSHONE ID 83352

JIM KUKURIN
2255 ARAGON CANYON ST
LAS VEGAS NV 89135

MICHELLE KUKURIN
PO BOX 3904
HAILEY ID 83333

CALVIN D AND JOYCE DARLENE KUNTZ
PO BOX 124
GOODING ID 83330

WILLIAM L KYES
PO BOX 436
BELLEVUE ID 83313

BRANDON LABBEE
471 N 650 W
SHOSHONE ID 83352

LINDA A LACHEWITZ AND WALTER J LACHEWITZ JR
2410 BELL BRANCH RD
GAMBRILLS MD 21054

AMALIA AND FRANCISCO LAGUNAS
1667 E 1600 S
GOODING ID 83330-5054

LAKE CREEK MEADOWS HOMEOWNERS ASSN INC
PO BOX 3144
KETCHUM ID 83340

LAKESIDE INDUSTRIES INC
PO BOX 479
BELLEVUE ID 83313

LANE RANCH HOMEOWNERS ASSN INC
C/O SUN COUNTRY MGMT
PO BOX 1675
SUN VALLEY ID 83353

RALPH R LAPHAM
PO BOX 554
BELLEVUE ID 83313

LAURENE POWELL JOBS TRUST UAD MARCH 2 2009
C/O HOWSON & SIMON LLP
101 YGANCIO VALLEY RD
WALNUT CREEK CA 94596

ARDEN LAURITZEN
RT 1
GOODING ID 83330

LAVA LAKE LAND & LIVESTOCK LLC
PO BOX 2249
HAILEY ID 83333

MICHAEL P LAWRENCE
GIVENS PURSLEY LLP
601 W BANNOCK ST
PO BOX 2720
BOISE ID 83701-2720

EDWARD A AND JULIE C LAWSON
105 LOWER BROADFORD RD
BELLEVUE ID 83313-5058

EDWARD AND EDWARD A LAWSON
LAWSON LASKI CLARK & POGUE PLLC
675 SUN VALLEY RD STE A
PO BOX 3310
KETCHUM ID 83340

LAWSON LASKI CLARK & POGUE PLLC
675 SUN VALLEY RD STE A
PO BOX 3310
KETCHUM ID 83340

DEBBRAH, EMIL V AND RONALD PAULS AND LAZY P FARMS
2007 E 2000 S
GOODING ID 83330

LAZY TRIPLE J RANCH GENERAL PARTNERSHIP
C/O FRED JUDD
1121 SAN ANTONIO RD, STE D200
PALO ALTO CA 94303

HARRY F LE MOYNE
1418 BLUE LAKES BLVD N
TWIN FALLS ID 83301

DIANA AND LEROY LEE
PO BOX 61
SHOSHONE ID 83352

LEGACY RESIDENTIAL LLC
C/O TOM ELLISON
400 112TH AVE N.E., STE 230
BELLEVUE WA 98004

LOUIS J AND MICKEY R LEGUINECHE
1450 S 1750 E
GOODING ID 83330

JOE AND LINDA LEGUINECHE
2099 E 1400 S
GOODING ID 83330

CHERI A AND JACK M LENA VITT
2621 FORESTVALE
TOLEDO OH 43615

LEROY C LEWIS
3774 S 5TH W
IDAHO FALLS ID 83404

GREG LIERMAN
1846 E 1550 S
GOODING ID 83330

LIESKOVAN FAMILY TRUST
651 W LEMON AVE
ARCADIA CA 91007

LILY REEVES, LILY REEVES TTE OF THE SUN VALLEY TRUST
U/D/T 1/8/99 AND SUN VALLEY TRUST
C/O SHANNON SADLER
PO BOX 5623
BEVERLY HILLS CA 90209-5623

LIMELIGHT CONDOMINIUMS INC
PO BOX 1312
KETCHUM ID 83340

LINCOLN COUNTY CEMETARY MAINT DISTRICT
BOX 566
SHOSHONE ID 83352

FRANCIS LIVINGSTON AND SUE ROTHER
110 ELDERBERRY LN
BELLEVUE ID 83313

KATHLYN A AND ROBERT B LOCKE
2126 S 1500 E
GOODING ID 83330

SUZANNE JEAN LOCKE
388 GLENDALE RD
BELLEVUE ID 83313

LOCKWOOD LAND & LIVESTOCK
781 W COUNTY LINE RD
SHOSHONE ID 83352

JANE K LODATO
21 DEER PARK LN
PORTOLA VALLEY CA 94028

JAY A AND LORI L LOESCHE
694 W 4 MILE RD
SHOSHONE ID 83352

ROBERT C LOGAN
BOX 429
HAILEY ID 83333

BETTY LOGAN
PO BOX 429
HAILEY ID 83333

MARK AND STEVE LOOMIS
PO BOX 1969
HAILEY ID 83333

DOMINGO LORENZO
2187 S 1500 E
GOODING ID 83330

LRM LLC
122 S HIAWATHA DR
HAILEY ID 83333

LAURA L LUCERE
374 BRADFORD RD
BELLEVUE ID 83313

KENDALL LUFF
PO BOX 534
BELLEVUE ID 83313

ELISE G LUFKIN
2817 10TH AVE E
SEATTLE WA 98102

MARGARET A AND MARTIN H LUTHER
10124 TAHOMA DR
ANDERSON ISLAND WA 98303

CHARLES M LUTHER
1817 S 1750 E
GOODING ID 83330-0207

CARTER V LUTHER
C/O LORNA BUCKALEW
2720 MAIN ST
SUSANVILLE CA 96130

C H RANDOLPH AND EVELYN H LYON
1102 ELM TREE RD
LAKE FOREST IL 60045

M & M FARMS AND SABALA FARMS INC
1819 E 1550 S
GOODING ID 83330

SCOTT AND TYRA MAC GUFFIE
PO BOX 6034
KETCHUM ID 83340

ALEXANDER MACDONALD III AND JESSICA A MACDONALD
PO BOX 3404
HAILEY ID 83333

FELAN AND KIMBERLY JANINE MACDONALD
PO BOX 4538
KETCHUM ID 83340

JEROME D MACK, PETER M THOMAS TRUST AND RIVER
GROVE FARM
C/O E PARRY THOMAS
PO BOX 642
SUN VALLEY ID 83353

MACON MORGL TRUST
LISA FERGUSON TRUSTEE
15260 VENTURA BLVD STE 1700
SHERMAN OAKS CA 91403

ARLENE M AND JOHN A MADDEN
PO BOX 95
FAIRFIELD ID 83327

PETER AND VICTORIA MADSEN
PO BOX 334
HAILEY ID 83333

MAGIC RESERVOIR HYDROELECTRIC INC
C/O JAY R JACKSON PRES
2399 S ORCHARD ST #201
BOISE ID 83705

MAGIC VALLEY GROWERS LTD
PO BOX 850
WENDELL ID 83355

MAGIC WEST SIDE WATER USERS INC
C/O WARREN MERRILL
1016 4TH AVE DR
JEROME ID 83338

JOHN B AND WENDY I MAJOR
PO BOX 23
MOUNT CARROLL IL 61053

JOHN A AND THAIS W MAJORS
365 GRACIE RD
NEVADA CITY CA 95959

CATHERINE B MANN
PO BOX 3421
HAILEY ID 83333

CHRISTOPHER MANNINO
5206 VALLEY VIEW RD
RANCHO PALOS VERDES CA 90275

DANIEL TODD MANOOGIAN
20 FOX LN
WINNETKA IL 60093

MARATHON PARTNERS LLC
PO BOX 3118
KETCHUM ID 83340

MARIANA S PAEN TRUST
117 N HIAWATHA
HAILEY ID 83333

MATTHEW MARKS
441 GLENDALE RD
BELLEVUE ID 83313

MICHAEL H AND NATASHA MARLOW
PO BOX 211
HAILEY ID 83333

CARMELA M AND JAMES R MARTELL
725 SOUTH MARTELL LN
GLENNS FERRY ID 83623

DALE AND MARTHA MARTIN
PO BOX 202
BELLEVUE ID 83313

KARIN T MARTIN
PO BOX 6720
KETCHUM ID 83340

WILLIAM D MARTINDALE
PO BOX 451
HAILEY ID 83333

BENITO MARTINIZ
PO BOX 63
BELLEVUE ID 83313

JOE AND MELISSA MATHENEY
PO BOX 54
RICHFIELD ID 83349

SHANON H AND THOMAS L MATSON, SHANON H MATSON
RESIDENCE TRUST NO 2 AND THOMAS L MATSON
RESIDENCE TRUST NO 2
PO BOX E
AUBURN WA 98071

CHARLES L MATTHIESEN
PO BOX 2540
KETCHUM ID 83340

ANITA AND MICHAEL MC CANN
PO BOX 1252
KETCHUM ID 83340

JOHN K AND KATHERINE S MC CLATCHY
PO BOX 3226
HAILEY ID 83333

ERNEST J AND JOYCE A MC DADE
1802 S 2050 E
GOODING ID 83330

JOHN H MC DONALD
PO BOX 1
105 MC DONALD LN
KETCHUM ID 83340

JOHN D AND ROSEMARY MC GONIGAL AND SPRING OF
GLADNESS RANCH INC
PO BOX 102
JEROME ID 83338

DONNA I MOORE AND NICHOLAS D MC GOUGH
PO BOX 688
FAIRFIELD ID 83327

CRYSTAL AND VARD C MC HAN
1668 E 1400 S
GOODING ID 83330

CANDICE MC HUGH
RACINE OLSON NYE BUDGE & BAILEY, CHTD
101 S CAPITOL BLVD STE 300
BOISE ID 83702

JEANETTE MC ILHENNY
213 BAY HORSE ROAD
BELLEVUE ID 83313

KATHLEEN MC KAY AND PHILIP VANDERHOEF
5069 HAROLD PLACE NE
SEATTLE WA 98105

DEBORAH L AND MATT A MC LAM
PO BOX 253
FAIRFIELD ID 83327

FRANK P WILLEY AND KAREN L MC LANE
PO BOX 5629
KETCHUM ID 83340

LLOYD R AND MARY D MC LEOD
1697 E 1600 S
GOODING ID 83330

BARBARA MC MURDO AND DELBERT MC MURDO JR
RT 1 BOX 1198
FAIRFIELD ID 83327

BRUCE AND MICHELLE MC STAY
1101 GANNETT RD
BELLEVUE ID 83313

GARY AND MARI MC STAY AND GARY M AND MARI MCSTAY
PO BOX 777
BELLEVUE ID 83313

RICHARD A MECHAM
20458 N MAIN ST
CAREY ID 83320

MILO W MECHAM
PO BOX 201
CAREY ID 83320

W CLOYD MECHAM
RT 1 BOX 400
CAREY ID 83320

MEDINA OVERLAKE LLC
PO BOX 9327
SEATTLE WA 98109

JON AND LANA L MELLEN
RT 1 BOX 1092
FAIRFIELD ID 83327

BARBARA A MERCER AND LESLIE M WESTFALL JR
PO BOX 7058
KETCHUM ID 83340

MARK A METCALF
18210 NE 103RD COURT
REDMOND WA 98052

METROPOLITAN LIFE INSURANCE CO
10801 MASTIN BLVD STE 930
OVERLAND PARK KS 66210

KATHI L AND ROBERT J MEYERS
1425 E 3200 S
WENDELL ID 83355

KATHI L AND ROBERT J MEYERS
3921 N 3300 E
TWIN FALLS ID 83301

MID VALLEY VENTURES LLC
PO BOX 2127
KETCHUM ID 83340

MID VALLEY WATER CO LLC
C/O THE KIRK GROUP
PO BOX 4380
KETCHUM ID 83340

CYNTHIA AND JOHN MILEY
PO BOX 3010
HAILEY ID 83333

CARLA AND JERRY MILLER
110 GANNETT RD
BELLEVUE ID 83313

BARBARA AND DONALD MILLER
201 POLO CLUB LN
BELLEVUE ID 83313

SANDRA K MILLER
2280 S 1400 E
GOODING ID 83330

LINDA L MILLER
RT 1 BOX 1130
FAIRFIELD ID 83327

PATRICIA G MILLINGTON
PO BOX 707
PICABO ID 83348

STEVE MILLS
PO BOX 247
HAILEY ID 83333

ROBERT L MITCHELL
10620 BERKSHIRE
LOS ALTOS CA 94022

MARY ANN MIX
PO BOX 2594
HAILEY ID 83333

JAMES DALE AND MARY M MIZER
PO BOX 728
HAILEY ID 83333

MOFFATT THOMAS BARRETT ROCK & FIELD CHTD
C/O SCOTT L CAMPBELL
PO BOX 829
BOISE ID 83701-0829

MOFFATT THOMAS BARRETT ROCK & FIELDS CHTD
DYLAN B LAWRENCE
PO BOX 829
BOISE ID 83701-0829

ELIZABETH A, STEVEN A AND WENDY A MOHR
503 W 470 N
SHOSHONE ID 83352

ELIZABETH A AND STEVEN MOHR
HCR 60 BOX 306
BLISS ID 83314

WILLIAM L MOLYNEUX
027 DURFEE RD
CAREY ID 83320

JOHN I AND KRISTY MOLYNEUX
10407 HWY 75
BELLEVUE ID 83313

A W AND MAXINE MOLYNEUX
1174 GANNETT-PICABO RD
BELLEVUE ID 83313

WALKER MONROE
101 W CHANNEL LN
HAILEY ID 83333

MARY E MOODY AND MEGAN L AND WILLIAM R NEAL
47751 FISH LAKE RD
HALFWAY OR 97834-8057

DEMI MOORE
C/O BESSY WONG
NKSF MANAGMENT
10100 SANTA MONICA BLVD, STE 1300
LOS ANGELES CA 90067

MOORE SMITH BUXTON & TURCKE CHTD
C/O BRUCE M SMITH
950 W BANNOCK, STE 520
BOISE ID 83702

AUDREY, HOWARD L, JEREMY, MEKENZIE AND RHONDA K
MORRIS
1101 E 2900 S
HAGERMAN ID 83332

MOSHER TRUST
C/O RUTHIS T MOSHER
1232 CORSICA DR
PACIFIC PALISADES CA 90272

MOUNTAIN VALLEY RANCH
PO BOX 405
FAIRFIELD ID 83327

MOUNTAIN WEST BANK
PO BOX 1059
COEUR D ALENE ID 83816

MPD HOLDING LLC
2935 W 2050 S
ABERDEEN ID 83210

MURFUS PARTNERS LLC
3111 BEL AIR DR
LAS VEGAS NV 89109

WILLIAM H MURPHY
PO BOX 2595
KETCHUM ID 83340

MURPHY FAMILY REVOCABLE TRUST
CYNTHIA B MURPHY TRUSTEE
PO BOX 3818
KETCHUM ID 83340

MURPHY FAMILY REVOCABLE TRUST
KINGSLEY H MURPHY III TRUSTEE
PO BOX 3818
KETCHUM ID 83340

MV PROPERTY LLC
PO BOX 5
KETCHUM ID 83340

JUDITH E AND KEITH MYERS
PO BOX 242
BELLEVUE ID 83313

JOAN AND TIMOTHY MYLNAR
22 BUTTERCUP RD
HAILEY ID 83333

FRANK AND JANET NACHTMAN
PO BOX 966
BELLEVUE ID 83313

KAYE AND MICHAEL NAEVE
1910 MONCLAIR DR
BOISE ID 83702

NATURAL ENERGY RESOURCES INC AND THOMAS M O GARA
FAMILY TRUST
C/O BRIAN BARSOTTI
PO BOX 370
KETCHUM ID 83340

JAMIE AND WILLIAM NAYLOR
1689 E 1700 S
GOODING ID 83330

LENA M NEGREPONTE
139 BASELINE RD
BELLEVUE ID 83313

JERRY H AND SUE L NELSON
9201 NE 126TH PL
KIRKLAND WA 98034

RICHARD W NELSON
PO BOX 1326
HAILEY ID 83333-1326

JEFF AND MELANIE MC CRAY NEVINS AND THE MELANIE R
MC CRAY 1965 TRUST
98 BROADFORD RD
HAILEY ID 83333

CHARLES E NEWELL
PO BOX 584
SHOSHONE ID 83352

NEWFOUNDLAND PARTNERS
C/O JOSEPH D WEINSTEIN AND
2600 CENTURY SQ 1901 4TH AVE
SEATTLE WA 98101-1688

NICK VANOFF PRESENTS INC
C/O NICK VANOFF JR
PO BOX 834
SUN VALLEY ID 83353

DONALD E NICKELSON
1701 HWY A1A STE 218
VERO BEACH FL 32963

MARK T AND PATRICIA A NICKUM
PO BOX 1565
HAILEY ID 83333

DOUGLAS H AND LISA A NIEDRICH
PO BOX 291
HAILEY ID 83333

THOMAS NIEMISTE
PO BOX 3496
HAILEY ID 83333

NIGHT CRAWLER WELL SYSTEM
PO BOX 90
KETCHUM ID 83340

JESSE A AND JIM L NISSON
327 BASELINE RD
BELLEVUE ID 83313

KATHY NOBLE
PO BOX 4189
HAILEY ID 83333

MARK NOREM
PO BOX 1285
BIG TIMBER MT 59011

NORTH SIDE CANAL CO LTD
921 N LINCOLN AVE
JEROME ID 83338

NORTHRIDGE II SUBDIVISION OWNERS INC AND
STARWEATHER SUBD PROPERTY OWNERS ASSN INC
PO BOX 254
KETCHUM ID 83340

NORTHRIDGE V SUBDIVISION OWNERS ASSN INC
PO BOX 463
HAILEY ID 83333

NORTHRIDGE VI SUBDIVISION OWNERS ASSN INC
PO BOX 2192
HAILEY ID 83333

NORTHWEST FARM CREDIT SERVICES FLCA
PO BOX 5059
TWIN FALLS ID 83303-5059

BRUCE NORVELL AND PATRICIA SPRAGUE
PO BOX 332
HAILEY ID 83333

NOTCH BUTTE HYDRO CO INC
C/O ENEL NORTH AMERICAN INC
ONE TECH DR STE 220
ANDOVER MA 01810

DENNIS P O BRIEN
PO BOX 1263
KETCHUM ID 83340

JANET B O CROWLEY
PO BOX 705
PICABO ID 83348

VICTORIA O GARA
114 PRICE LN
BELLEVUE ID 83313

THOMAS O GARA
PO BOX 2930
HAILEY ID 83333

RICARD RIGGS OHRSTROM
PO BOX 1213
SUN VALLEY ID 83353

MEL OKEON
PO BOX 169
HANFORD CA 93232-0169

OLD CUTTERS INC
SUN VALLEY LONG TERM HOLDING LLC
PO BOX 4944
KETCHUM ID 83340

OLIVER FAMILY TRUST
C/O OLIVER MCMILLAN
733 8TH AVE
SAN DIEGO CA 92101

CHARLES J AND DORIS J OLSON
8813 OLD HWY 30
MOUNTAIN HOME ID 83647

CLARE M AND KAREN Y OLSON
PO BOX 136
HILL CITY ID 83337

MICHAEL PETE ONEIDA
PO BOX 845
SHOSHONE ID 83352

JAMES M OOSTING
PO BOX 386
BELLEVUE ID 83313

OPPIO LAND & LIVESTOCK LLC
PO BOX 381
GOODING ID 83330

DAVID G AND LINDSAY W ORMSBY
C/O JAMES L KENNEDY JR
PO BOX 5901
KETCHUM ID 83340

NINA MOLYNEUX AND WAYNE D ORVIK
18525 HIGHWAY 20
BELLEVUE ID 83313

RODERICK W OVERFIELD
PO BOX 850
HAILEY ID 83333

JEAN AND TONY PALACIO
799 W 720 N
SHOSHONE ID 83352

WILLIAM M PALACIO
PO BOX 281
GOODING ID 83330

STEVE PALKEN
PO BOX 1643
SUN VALLEY ID 83353

MARK PALMER
PO BOX 965
BELLEVUE ID 83313

ELMER M AND RUTH ELLEN PARKE
1975 E 1775 S
GOODING ID 83330

JACK R AND SHARON G PARKER
PO BOX 418
BELLEVUE ID 83313

PARKER GULCH LLC
PO BOX 1835
KETCHUM ID 83340

SUSAN T PARKINSON
109 AUDUBON
HAILEY ID 83333

WILLIAM A PARSONS
137 W 13TH ST
PO BOX 910
BURLEY ID 83318

RICHARD D PAYNE
PO BOX 113
CAREY ID 83320

JOHN A ROSHOLT, PB INVESTMENTS AND ROBERTSON
HEPWORTH SLETTE WORST & STOVER PLLC
PO BOX 1906
TWIN FALLS ID 83303-1906

PBFF LLC
8854 W EMERALD ST STE 260
BOISE ID 83704

MARGO PECK
131 S CARMELINA AVE
LOS ANGELES CA 90049

TONITA W PEEBLER
PO BOX 3529
HAILEY ID 83333

CHARLES D PEEBLER JR
PO BOX 4050
HAILEY ID 83333

PENSCO TRUST CO
CUSTODIAN FBO RICHARD SAIYA
450 SANSOME ST 14TH FLOOR
SAN FRANCISCO CA 94111-3306

PETER TRUST LP AND THOMAS A THOMAS
PO BOX 642
SUN VALLEY ID 83353

LOIS L PETERSON
421 HWY 75
SHOSHONE ID 83352

BEN PETZINGER
PO BOX 194
HAILEY ID 83333

EVELYN AND JAMES W PHILLIPS
PO BOX 864
HAILEY ID 83333

PHYLLIS BALDWIN TRUST
PHYLLIS BALDWIN TRUSTEE
3155 W STATE ST
EAGLE ID 83616

PICABO LIVESTOCK CO
PO BOX 688
PICABO ID 83348

PICABO LIVESTOCK CO INC
PO BOX 748
PICABO ID 83348

PICABO WATER USERS ASSN
C/O JANET OCROWLEY
PO BOX 705
PICABO ID 83348

MARGARET A AND MARVIN E PIERSON
1834 E 1600 S
GOODING ID 83330

KRISTINE S PIGEON
109 GREENHORN RD
HAILEY ID 83333

PIONEER MOON LLC
PO BOX 2881
KETCHUM ID 83340

PIONEER WELL SYSTEM
C/O JULIE DAHLGREN
PO BOX 4402
KETCHUM ID 83340

LARRY B AND MARILYN R PLOTT
25 LOWER BROADFORD RD
BELLEVUE ID 83313

POINT OF ROCKS RANCH LLC
PO BOX 9320
KETCHUM ID 83340

JAMES P SPECK AND PONDERERS LLC
PO BOX 987
KETCHUM ID 83340

SCOTT C PORTER
PO BOX 99
HAILEY ID 83333

PORTER FAMILY LIVING TRUST
PO BOX 2530
KETCHUM ID 83340

MAX L POTTER
PO BOX 993
KETCHUM ID 83340

POVERTY FLATS PROPERTIES LLC
C/O BILL LANSING
93962 BRIDGE VIEW LN
NORTH BEND OR 97459

PRAIRIE SUN RANCH OWNERS ASSN INC
PO BOX 1151
BELLEVUE ID 83313

BRUCE B AND SHERRY L PRICE
PO BOX 326
CAREY ID 83320

PROSPECTOR HOMEOWNER ASSOC
PO BOX 3299
KETCHUM ID 83340

PRUDENTIAL FEDERAL SAVINGS
CONTRACT ADMINISTRATION
PO BOX 15500
SALT LAKE CITY UT 84115

PHILIP F PUCHNER
PO BOX 866
BELLEVUE ID 83313

ANNE W AND ROBERT W PULLEN
33 LANA LN
HOUSTON TX 77027

WES AND WESLEY PURDY
PO BOX 838
BELLEVUE ID 83313

THOMAS A PYLE
PO BOX 94
KETCHUM ID 83340

BENNETT W AND GAIL D QUELLHORST
1786 E 1800 S
GOODING ID 83330

QUIGLEY GREEN OWNER LLC
C/O GREENFIELD PARTNERS
ATTN: BARRY P MARCUS
50 NORTH WATER ST
SOUTH NORWALK CT 06854

CALVIN S AND DANA L QUINNEY
11850 HWY 55
BOISE ID 83703

RABO AGRIFINANCE INC
12443 OLIVE BLVD STE 50
ST LOUIS MO 63141

SUSAN RAFFERTY
3717 EAGLE AVE
KEY WEST FL 33040

RALPH W & KANDI L GIRTON 1999 REVOCABLE TRUST
PO BOX 39
BELLEVUE ID 83313

ERIC N AND JOAN T RASOR
PO BOX 1573
HAILEY ID 83333

KATHLEEN L AND WILLIAM R RATLIFF
21165 SW KILLARNEY CT
TUALATIN OR 97062

HARRIETT B AND VERNON F RAVENSCROFT
1331 SHOE STRING RD
BLISS ID 83314-5119

LORI L REBISCHKE
6652 S HOGG RD
MARSING ID 83639

RED CLIFFS HOMEOWNERS ASSN
PO BOX 680
KETCHUM ID 83340

RED DEVIL MOUNTAIN HOMEOWNERS ASSN
C/O CLAY S HOLDEN
PO BOX 4626
HAILEY ID 83333

RED DEVIL MOUNTAIN HOMEOWNERS ASSN
C/O MIRIAM F HOLDEN
PO BOX 4626
SUN VALLEY ID 83353

REDCLIFF PARTNERS LP
A CALIFORNIA LTD PARTNERSHIP
567 SAN NICOLAS DR STE 340
NEWPORT BEACH CA 92660

REDSTONE PARTNERS LP
1188 EAGLE VISTA CT
RENO NV 89511

VIRGINIA HANSING REED
138 BASELINE RD
BELLEVUE ID 83313

LINDA K REED AND WILLIAM K SAMPLE
PO BOX 1042
BELLEVUE ID 83313

DALE REEDY
RT 1 BOX 1250
FAIRFIELD ID 83327

JIM REEDY
RT 1 BOX 1255
FAIRFIELD ID 83327

F ALFREDO REGO
PO BOX 2358
SUN VALLEY ID 83353

REMBER PROPERTIES LLC
PO BOX 195
STANLEY ID 83278

DAVID W AND DORINDA J RENDAHL
PO BOX 3104
HAILEY ID 83333

RENEGADE/MCGLOCHLIN LLC
C/O DIANE J RINKER
PO BOX 7250
NEWPORT BEACH CA 92658

NANCY AND WILLIAM RESKO
PO BOX 1499
HAILEY ID 83333

LULA BELL REYNOLDS
1486 E 2200 S
GOODING ID 83330

ANN MARIE WARBERG AND VINCE RICHARD
PO BOX 3846
HAILEY ID 83333

RICHARD S FULD JR IDAHO REVOCABLE TRUST
C/O MATRIX ADVISORS LLC
780 THIRD AVE 28TH FLOOR
NEW YORK NY 10017

LINDA AND TOM RICHMOND
PO BOX 1105
HAILEY ID 83333

ROD RINKER
BOX 641
PICABO ID 83348

JERRY RITCHEY
PO BOX 14001-198
KETCHUM ID 83340

RIVER LODGE LLC
PO BOX 1482
SUN VALLEY ID 83353

RIVER VIEW FARMS
1602 E 1700 S
GOODING ID 83330

RIVERWOODS HOMEOWNERS ASSN
C/O ROBERT COLMAN, PRESIDENT
PO BOX 7370
KETCHUM ID 83340

RESTATED MC MAHAN 1986 REVOCABLE TRUST
WILLIAM A MC MAHAN TRUSTEE
PO BOX 5919
KETCHUM ID 83340

RHYTHM RANCH HOMEOWNERS ASSN
C/O WILLIAM A MCMAHAN
PO BOX 5919
KETCHUM ID 83340

RICHARD J & ESTHER E WOOLEY TRUST
209 CANYON RD
HAILEY ID 83333

DEANN AND LLOYD RICHINS
2809 E 550 S
PAUL ID 83347

DEVIN O, KRISTEN, MATHEW ODELL AND RAEALYN RIGBY
1533 4 TH AVE W
GOODING ID 83330-6179

HARRY S RINKER
RINKER CO
PO BOX 7250
NEWPORT BEACH CA 92658 7250

JAMES B AND LINDA RITTER
PO BOX 28
RICHFIELD ID 83349

RIVER ROCK RANCH L P
PO BOX 129
KETCHUM ID 83340

RIVERBEND PARTNERS ONE
C/O PETER O BRIEN
1771 N RAINDANCE PL
EAGLE ID 83616

CARL H AND KARIN RIXON
PO BOX 462
SUN VALLEY ID 83353-0462

ROBBINS TRUST & O CONNOR TRUST
PO BOX 48
BELLEVUE ID 83313

THOMAS M ROBERTSON
156 2ND AVE W
PO BOX 525
TWIN FALLS ID 83303-0525

EVAN ROBERTSON
ROSHOLT ROBERTSON & TUCKER
PO BOX 1906
TWIN FALLS ID 83303-1906

ROCK CREEK LLC
C/O HARRY S RINKER MANAGER
PO BOX 7250
NEWPORT BEACH CA 92658

ROBERT ROHE
PO BOX 2288
KETCHUM ID 83340-2288

KATHLEEN B ROSEKRANS
17 QUIGLEY RD
HAILEY ID 83333

JOHN A ROSHOLT
142 THIRD AVE N
TWIN FALLS ID 83301

ROTH INVESTMENTS LLC
539 S 800 E
JEROME ID 83338

BRET L AND TERRY D RUBY
1004 4TH AVE W
GOODING ID 83330

MAYME M RUFFING
C/O RICHARD H RUFFING
9843 FIR TREE RD
DU QUOIN IL 62832

ROBERT L BAKER REVOCABLE TRUST
ROBERT L BAKER TRUSTEE
PO BOX 1830
SUN VALLEY ID 83353

BREON J ROBERTSON
PO BOX 352
MC ALLISTER MT 59740

ROBERTSON & SLETTE PLLC
PO BOX 1906
TWIN FALLS ID 83303

BENJAMIN D AND TENER W ROGERS
PO BOX 1996
HAILEY ID 83333

KENNETH O AND MARY D ROSE
612 N RAIL ST WEST
SHOSHONE ID 83352

MARION R AND ROBERT M ROSENTHAL
1902 ASSOCIATION DR
RENTON VA 20191

JOHN A ROSHOLT AND TRAVIS L THOMPSON
BARKER ROSHOLT & SIMPSON LLP
195 RIVER VISTA PLACE, STE 204
TWIN FALLS ID 83301-3029

M SCHWEITZER AND MICHAL E J ROTHSCHILD
PO BOX 548
BELLEVUE ID 83313

MAYME M RUFFING
336 5TH AVE E
TWIN FALLS ID 83301

AMY AND JASON RUNSER
PO BOX 118
WENDELL ID 83355

RUSSELL Warburton Sample Trust
Russell Warburton Sample Trustee
1540 Heroic Rd
Hailey ID 83333

Robert N Ruth
199 S Los Robles Ave Ste 560
Pasadena CA 91101

Dean and Susan M Sabala
826 California St
Gooding ID 83330

Sabala Farms
1740E 1650S
Gooding ID 83330

Andrew Sabel
PO Box 3910
Ketchum ID 83340

Sage Springs Homeowners Assn Inc
C/O Nichols Property Management
PO Box 3024
Ketchum ID 83340

Sage Willow LLC
2416 Plaza Del Grande
Las Vegas NV 89102

Vicky Salfeld
PO Box 313
Bellevue ID 83313

Dagmar and Ray Salmon
402 Dakota
Hailey ID 83333

Helen Leidy Samson and The Samson 1991 Revocable Trust
PO Box 3389
Hailey ID 83333

Ken and Malinder Sangha
PO Box 9200
Ketchum ID 83340

Sheri L Sass
6057 N Castleton
Boise ID 83714

Adele S and Patrick J Savaria
PO Box 551
Hailey ID 83333

Sawtooth Botanical Garden
PO Box 928
Sun Valley ID 83353

Gloriana and Lyle Saylor
235 St Thomas Ln
Owings Mills MD 21117

Jim D Scarrow
3184 S 1900 E
Wendell ID 83355

Scott T Scheer
RT 1 Box 1080
Fairfield ID 83327

Alice E and Andreas Schernthanner
PO Box 567
Sun Valley ID 83353

Kathryn and Stephen Schmid
205 9th Ave N
Twin Falls ID 83301

Daniel E and Marlys J Schmidt
10901 Hwy 75
Bellevue ID 83313

DOROTHY AND GORDON SCHMIDT
630 E HWY 20
FAIRFIELD ID 83327

MITCHELL B SCHMIDT
PO BOX 524
GOODING ID 83330

ELEANOR AND WALTER F SCHODDE
3 RIVER RUN ESTATES
BURLEY ID 83318

LAWRENCE SCHOEN
18351 US HWY 20
BELLEVUE ID 83313

ARNOLD SCHWARZENEGGER
C/O OAK PRODUCTIONS
3110 MAIN ST STE 300
SANTA MONICA CA 90405

SCI PROPERTIES LLC
C/O FREMONT PROPERTIES INC
ATTN J MARCUS BOMAN
199 FREMONT ST STE 2400
SAN FRANCISCO CA 94105

C L AND ELLEN M SCOFIELD
PO BOX 302
BELLEVUE ID 83313

BETTY SCROGGINS
1942 E 1550 S
GOODING ID 83330

SDRTR LLC
C/O ANTHONY ROBBINS
930 S ANDREASEN DR STE H
ESCONDIDO CA 92029

SELBY CROSSING LLC AND SHIRLEY M AND WILLIAM A
SIMON
PO BOX 364
FAIRFIELD ID 83327

BERTHA SEVERE
PO BOX 94
GOODING ID 83330

CARLITA F SEVERE-MC IVER
330 BAYHORSE RD
BELLEVUE ID 83313

LORI AND PETER ZACK SEWELL
PO BOX 3175
HAILEY ID 83333

SUZANNE S AND WILLIAM G SHAW
327 STOCKBRIDGE
ATHERTON CA 94027

NANCY AND WILLIAM L SHERBINE AND UPPER WOOD RIVER
WATER USERS ASSN INC
153 BASELINE RD
BELLEVUE ID 83313

THERESA L, WILLIAM T AND WILLIAM T "ROCKY" SHERBINE
200 BASELINE RD
BELLEVUE ID 83313

WILLIAM L SHERBINE
C/O ROCKY SHERBINE
200 BASELINE RD
BELLEVUE ID 83313

SHERI PATTERSON INC
2206 MAYBERRY LN
FILER ID 83328

DAVID SHERIDAN
PO BOX 20
KETCHUM ID 83340

GARY SHILLING
PO BOX 256
FAIRFIELD ID 83327

ALVIN V SHOEMAKER
DBA SHOEMAKER PROPERTIES
C/O BOB MARCROFT
PO BOX 1092
HAILEY ID 83333

SHOROCK HYDRO INC
JOHN J STRAUBHAR
PO BOX 1787
TWIN FALLS ID 83301-1787

SILVER CREEK FARMS HOMEOWNERS ASSN INC
C/O H ALLEN LURAY
94 TOWNSEND GULCH
BELLEVUE ID 83313-5008

SILVER SAGE OWNERS ASSN INC
160 4TH ST W STE 4
PO BOX 1702
KETCHUM ID 83340-1702

SHARI L AND WILLIAM R SIMON AND SIMON FARMS INC
PO BOX 403
FAIRFIELD ID 83327

SIMON FAMILY TRUST
ELIZABETH BLISS SIMON TRUSTEE
PO BOX 1837
SUN VALLEY ID 83353

SINCLAIR OIL CORP
DBA SUN VALLEY COMPANY
PO BOX 10
SUN VALLEY ID 83353

VELMA I SJURSON
281 CASWELL AVE W
TWIN FALLS ID 83301

SLEIGH BELLS LLC
31 SIMMONS DR
DUXBURY MA 02332

GARY D SLETTE
ROBERTSON AND SLETTE PLLC
PO BOX 1906
TWIN FALLS ID 83303-1906

ALVIN V AND SALLY P SHOEMAKER
PO BOX 550
BELLEVUE ID 83313

COLLEEN AND RONALD LEO SIEVERS
PO BOX 711
WENDELL ID 83355

SILVER CREEK HUNTING & FISHING CLUB LLC
4931 BONITA BAY BLVD #1601
BONITA SPRINGS FL 34134

EDWARD SIMON
500 S MAIN STE 205
PO BOX 540
KETCHUM ID 83340

DAVID A SIMON
PO BOX 545
FAIRFIELD ID 83327

EDWARD WHEELER AND ELIZABETH SIMPSON
PO BOX 3508
HAILEY ID 83333

CHRISTOPHER AND DANA SINGLETON
PO BOX 2803
SUN VALLEY ID 83353

FRANCES AND LEON SKELTON
2958 THAYER BRIDGE CIRCLE
IDAHO FALLS ID 83402

GARY D AND KATHLEEN H SLETTE
3381 WILLOW WAY
TWIN FALLS ID 83301

JEANIE SLIGAR
3550 E 4000 N
KIMBERLY ID 83341

DAVID AND LESTER SLIMAN AND SLIMAN LAND &
LIVESTOCK
1642 B HWY 46
GOODING ID 83330

MICHAEL E SLIMAN
PO BOX 491
GOODING ID 83330

SLIMAN SHEEP CO INC
1644 ST HWY 46
GOODING ID 83330

C D AND M JOAN SLUDER
PO BOX 22
BELLEVUE ID 83313

CAROL SMAIL
PO BOX 3982
KETCHUM ID 83340

GEOFFREY C SMITH
17926 HWY 20
BELLEVUE ID 83313

KENNETH R SMITH
328 GLENDALE RD
BELLEVUE ID 83313

ELIZABETH N SMITH
6 FOX HOLLOW GULCH
PO BOX 895
BELLEVUE ID 83313

GREGORY C AND KATHERINE T SMITH
79720 ROCK CREEK RD
WAMIC OR 97063

BRUCE M SMITH
MOORE SMITH BUXTON & TURCKE
950 W BANNOCK ST STE 520
BOISE ID 83702

VICTOR M SMITH
PO BOX 1277
FAIRFIELD ID 83327

DALE P AND SHARON L SMITH
PO BOX 423
FAIRFIELD ID 83327

EDWARD E SMITH
PO BOX 425
FAIRFIELD ID 83327

JOY T, PAUL, TODD AND VICKI LEE SMITH
PO BOX 575
HAILEY ID 83333

BRIAN L SMITH AND DIANE STEFFEY-SMITH
PO BOX 629
BELLEVUE ID 83313

DALLAS E SMITH
RT 1 BOX 2070
CORRAL ID 83322

SMOKEY DOME LLC
C/O CHUCK HILL
PISTOL CREEK FINANCIAL
PO BOX 1607
BELLEVUE WA 98009

SMOKEY DOME PARTNERS
PO BOX 989
KETCHUM ID 83340

STEVEN G SNAPP
C/O ROBERT GRILL
3359 WILLOW WAY
TWIN FALLS ID 83301

DAVID, FELICIA, FRED AND MARTHA SOARES
PO BOX 5092
KETCHUM ID 83340

KIRIL SOKOLOFF
PO BOX 6191
KETCHUM ID 83340

SOLDIER MOUNTAIN DEVELOPMENT INC AND VALLEY
ENTERTAINMENT GROUP INC
126 S MAIN ST STE B9
HAILEY ID 83333

WARREN G SORENSEN
355 BROADFORD RD
BELLEVUE ID 83313

JOE SORENSEN
45 OLD STATE HWY 93
CAREY ID 83320

STEN SORENSEN
PO BOX 3955
KETCHUM ID 83340

SOUTH 36 LLC
1371 SILVER STAR DR
HAILEY ID 83333-8661

SOUTH COVE VENTURES LLC
ATTN: CHARLES HILL VP
PO BOX 1607
BELLEVUE WA 98009

SOUTH GIMLET WATER USERS ASSN INC
PO BOX 2439
KETCHUM ID 83340

SOUTHERN COMFORT HOMEOWNERS ASSN INC
C/O CHUCK WILLIAMSON
PO BOX 2739
KETCHUM ID 83340

SOUTHERN IDAHO SOLID WASTE
PO BOX 159
BURLEY ID 83318

SOUTHERN STAR ACRES SUBDIVISION OWNERS ASSN INC
190 LABRADOR LN
BELLEVUE ID 83313

SOUTHWEST ASSOC
C/O SAM GROSSMAN
GROSSMAN CO PROPERTIES
3101 N CENTRAL AVE STE 1390
PHOENIX AZ 85012

SPECK & AANESTAD
JAMES P SPECK
PO BOX 987
KETCHUM ID 83340

SPRING COVE RANCH INC
283 E SPRING COVE RD
BLISS ID 83314

RICHARD SPRINGS III
121 PUNKIN CENTER RD
GANNETT ID 83313

DAVID L AND SUE S SQUIER
46 PARK ST
NEW CANAAN CT 06840

STAKER & PARSON COMPANIES
2350 S 1900 W
OGDEN UT 84409-1429

STALKER CREEK RANCH LLC
PO BOX 739
SUN VALLEY ID 83353

ALBERT AND TRACY STAMPKE
PO BOX 73
FAIRFIELD ID 83327

STARLITE HOMEOWNERS ASSOC
PO BOX 4068
KETCHUM ID 83340

MARK A AND MEAGAN R STASZ
PO BOX 2948
HAILEY ID 83333

STATE OF IDAHO
DEPT OF LANDS
STATEHOUSE
BOISE ID 83720-0050

STATE OF IDAHO
IDAHO SCHOOL FOR THE DEAF AND THE BLIND
1450 MAIN ST
GOODING ID 83330

STATE OF IDAHO
STATEHOUSE
PO BOX 83720
BOISE ID 83720

DANIEL V STEENSON
RINGERT LAW
PO BOX 2773
BOISE ID 83701

W CLINTON STENNETT
PO BOX 475
KETCHUM ID 83340

STEVEN D HOLZMAN TRUST
C/O STEVE HOLZMAN
1161 VIRGINIA RD
SAN MARINO CA 91108

CAROL F AND ROBERT G STEVENS
PO BOX 308
KETCHUM ID 83340

JOHN F STEVENSON
36 HILLSIDE RANCH RD
BELLEVUE ID 83313

JOHN F STEVENSON JR
369 MONTEZUMA AVE #152
SANTA FE NM 87501

STATE OF IDAHO
DEPT OF FISH & GAME
PO BOX 25
BOISE ID 83707

STATE OF IDAHO
DEPT OF PARKS & RECREATION
STATEHOUSE MAIL
PO BOX 83720
BOISE ID 83720-0065

STATE OF IDAHO
IDAHO WATER RESOURCE BOARD
322 E FRONT ST
PO BOX 83720
BOISE ID 83720-0098

STATE OF IDAHO DEPT OF TRANSPORTATION
ATTN: LANA SERVATIUS DIST 3 RIGHT OF WAY SUPERVISOR
PO BOX 8028
BOISE ID 83707-2028

DIANE STEFFEY-SMITH
PO BOX 5326
KETCHUM ID 83340

STEPHAN KVANVIG STONE & TRAINOR
PO BOX 83
TWIN FALLS ID 83303-0083

SHERI EAGLE AND W GRANT STEVENS
4644 LINCOLN BLVD STE 552
MARINA DEL REY CA 90292

STEVENS LIVING TRUST
320 THE STRAND
MANHATTAN BEACH CA 90266

ANDREA F STEVENSON, JOHN F STEVENSON JR AND
WILLIAM BOZZUTO TRUSTEE
C/O JOHN F STEVENSON
36 HILLSIDE RANCH RD
BELLEVUE ID 83313

JAMES V STEWART
22430 98TH AVE SW
VASHON ISLAND WA 98070

CLAYTON L STEWART
PO BOX 44
SUN VALLEY ID 83353

MARIE AND ROBERT STILO
420 GANNETT RD
BELLEVUE ID 83313

CLARENCE D AND TONA B STILWILL
PO BOX 1281
FAIRFIELD ID 83327

STINSON TRUST
C/O RALF STINSON
9 DRESDEN BAY
ALAMEDA CA 95402

STONEGATE HOMEOWNERS ASSN INC
PO BOX 2559
SUN VALLEY ID 83353

JOE STOREY
1554 S 2000 E
GOODING ID 83330

EVELYN G STRICKLAND
460 5TH AVE E
WENDELL ID 83355

STROM RANCHES INC
PO BOX 137
HILL CITY ID 83337-0137

ROBERT J STRUTHERS
762 ROBERT ST
PICABO RT
BELLEVUE ID 83313

GAYLE M AND WILLIAM K SULLIVAN
PO BOX 1068
HAILEY ID 83333

SUN VALLEY CO A WYOMING CORP
PO BOX 10
SUN VALLEY ID 83353

SUN VALLEY LAND & MINERALS INC
PO BOX 1959
SUN VALLEY ID 83353

SUN VALLEY TRAILER PARKS INC
C/O SANDY NELSON
BOX 236
BELLEVUE ID 83313

SUN VALLEY WATER & SEWER DISTRICT
PO BOX 2410
SUN VALLEY ID 83353-2410

SUNBEAM HOLDING TRUST
PO BOX 1104
KETCHUM ID 83340

JAMES R AND JANET A SUPER
PO BOX 598
BELLEVUE ID 83313

KRISTI A AND ROSS J SUTTON
PO BOX 3168
HAILEY ID 83333

JAMES A SUTTON II
PO BOX 2577
HAILEY ID 83333-2577

SWEET POTATO RANCH LLC
C/O JOE CLARK, AVIATION PARTNERS
7299 PERIMETER RD S
SEATTLE WA 98108

MARK J SWENKE
PO BOX 3630
HAILEY ID 83333

SWIFTSURE RANCH THERAPEUTIC EQUESTRIAN CENTER INC
114 CALYPSO LN
BELLEVUE ID 83313

SYRINGA RANCH LLC
1061 WOODLAND DR
BEVERLY HILLS CA 90210

SANDOR AND TERI SZOMBATHY
PO BOX 2996
KETCHUM ID 83340

MATTHEW THORNTON AND T5 RANCH LLC
PO BOX 751
BELLEVUE ID 83313

DONALD E TABER
312 E 20 N
SHOSHONE ID 83352

NANCIE TATUM
PO BOX 1365
SUN VALLEY ID 83353

LANA J TAYLOR
PO BOX 2473
HAILEY ID 83333-2473

AARON K AND SALOME TAYLOR
PO BOX 3096
HAILEY ID 83333

JOHN A, MEGAN AND SAMANTHA TEDESCO
1450 PURSIMA CREEK RD
HALF MOON BAY CA 94019

TERENCE J O REILLY REVOCABLE TRUST
TERENCE J O REILLY TRUSTEE
1900 O FARRELL ST STE 360
SAN MATEO CA 94403

ED TERRAZAS AND JACKIE WESELOH
109 RIDGEVIEW DR
BELLEVUE ID 83313

THE 4401 LIVING TRUST
AARON FIMMER TRUSTEE
C/O SINGER BURKE & CO
6345 BALBOA BLVD STE 375
ENCINO CA 91316

THE BARER FAMILY TRUST
C/O STANLEY H & ALTA S BARER TTEES
3048 E LAUREL HURST DR NE
SEATTLE WA 98105

THE BRYSON LIVING TRUST
C/O JOHN E BRYSON
2244 WALNUT GROVE AVE
ROSEMEAD CA 91770

THE BRYSON LIVING TRUST
C/O LOUISE HENRY BRYSON
2244 WALNUT GROVE AVE
ROSEMEAD CA 91770

THE CATHERINE M LEWIS TESTAMENTARY FAMILY TRUST
C/O LEROY LEWIS
3774 SOUTH 5TH WEST
IDAHO FALLS ID 83404

THE CHRISTENSEN 1987 TRUST
HC 64 BOX 8288
KETCHUM ID 83340

THE COMMUNITY SCHOOL INC
PO BOX 2118
SUN VALLEY ID 83353

THE CROSS CREEK TRUST
PO BOX 3332
HAILEY ID 83333

THE FOSTER FAMILY TRUST
PO BOX 633
PICABO ID 83348

THE GRIFFIN BUTTE LAND TRUST
2120 WAVERLY WAY E
SEATTLE WA 98112

THE HAILEY PARTNERS
3184 AIRWAY AVE STE K
COSTA MESA CA 92626

THE JONES TRUST
PO BOX 5900
NEWPORT BEACH CA 92662

THE MILLER LIVING TRUST
1735 GLEN OAKS
SANTA BARBARA CA 93108

THE MUTUAL LIFE INSURANCE CO OF NEW YORK
ATTN BONNIE TERRELL ASST VP
4412 74TH ST #F100
LUBBOCK TX 79424

THE NATURE CONSERVANCY
WESTERN RESOURCE OFFICE
2424 SPRUCE ST STE 100
BOULDER CO 80302-4617

THE SUN VALLEY RESIDENCE TRUST
C/O PENELOPE GLASSMEYER TTE
26 BUTLERS ISLAND RD
DARIEN CT 06820

THE VILLAGE GREEN AT THE VALLEY CLUB HOA INC
ATTN: KATHY PRUETT
BLUE SKY ESTATE MANAGEMENT
PO BOX 2607
SUN VALLEY ID 83353

DENISE L AND MORGAN THOMAS
PO BOX 209
HAILEY ID 83333

THOMAS STEWART FAMILY TRUST
THOMAS PETER THOMAS
JACQUELINE SUE STEWART
25 PRESTON RD
WOODSIDE CA 94062

THE GULCH TRUST
ARTHUR HARRIGAN TRUSTEE
C/O T MASON COM INVEST LCC
2300 CARILLON PT
KIRKLAND WA 98033

THE JEFFREY K RICE FAMILY TRUST
PO BOX 2313
HAILEY ID 83333

THE MC GRATH 1998 TRUST
180 MONTGOMERY ST 25TH FLOOR
SAN FRANCISCO CA 94104

THE MULDOON RANCH CO LLC
C/O ARLEN CROUCH
370 E 500 N
JEROME ID 83338

THE NATURE CONSERVANCY
116 1ST AVE N
HAILEY ID 83333-8411

THE PATRICIA ENGLUND LIVING TRUST UAD
C/O PATRICIA ENGLUND TRUSTEE
PO BOX 63
FAIRFIELD ID 83327

THE VALLEY CLUB INC
PO BOX 252
SUN VALLEY ID 83353

CAROL BURDZY THIELEN
18 OLD SAGE TRAIL
HAILEY ID 83333

E PARRY THOMAS
PO BOX 642
SUN VALLEY ID 83353-0642

THOMPSON TRIUMPH TRUST
C/O GENE N THOMPSON
PO BOX 2584
SUN VALLEY ID 83353

GAIL SLOCUM THORNTON
PO BOX 1052
KETCHUM ID 83340

C ROD THORNTON
PO BOX 246
KETCHUM ID 83340

JON C AND LINDA THORSON
2122 BUTTERCUP RD
HAILEY ID 83333

THREE CREEKS RANCH LLC
1901 BAYADERE TERR
CORONA DEL MAR CA 92625

THUNDER MEADOWS OWNERS ASSN INC
PO BOX 4786
KETCHUM ID 83340

THUNDER SPRING III LLC
1120 NYE ST
SAN RAFAEL CA 94901

BRUCE S AND LESLIE A TIDWELL
2720 3RD AVE HP 1
SEATTLE WA 98121-2262

TIMBERVIEW TERRACE HOMEOWNERS ASSN
PO BOX 4291
KETCHUM ID 83340

BARBARA TOMASI
130 GLENDALE RD
BELLEVUE ID 83313

CONNIE, JACK, JIM AND WONDA TOOTHMAN AND MICHAEL
C AND SUSAN ZENONIANI
561 MOTHER LODGE LOOP
HAILEY ID 83333

BARBARA L AND ERNEST W TOWNSEND
112 LOWER BROADFORD RD
BELLEVUE ID 83313

ADELIA AND EVERETT TRADER
726 8TH AVE E
GOODING ID 83330

JUDITH JESSICA TRAGER AND KENNETH B TRAGER JR
PO BOX 249
BELLEVUE ID 83313-0249

TERRANCE P TRASK
PO BOX 2276
HAILEY ID 83333

MARCIA N TROOK
30 ABERDEEN RD
WESTON MA 02493

TRUSTEES OF THE RIVKIN/TOLSON 2000 TRUST
CHARLES H RIVKIN & SUSAN TOLSON
243 22ND ST
SANTA MONICA CA 90402

BRUCE AND KAREN TRUXAL
PO BOX 431
BELLEVUE ID 83313

SHEILA K TUCKER
5131 N RIVERFRONT DR
BOISE ID 83714

JAMES C TUCKER
C/O IDAHO POWER CO
PO BOX 70
BOISE ID 83707

ELWYN A AND RITA A TUPPER
RT 1 BOX 1240
FAIRFIELD ID 83327

JERRY TURCO
525 RIVERSIDE AVE
LYNDHURST NJ 07071

CHRISTOPHER TUTTLE
9391 W PREECE
BOISE ID 83704

JOHN T AND LENNIE L UHRIG
PO BOX 732
SHOSHONE ID 83352

UNITED STATES OF AMERICA ACTING THROUGH
BUREAU OF RECLAMATION
REGIONAL DIRECTOR PN CODE-3100
1150 N CURTIS RD STE 100
BOISE ID 83706-1234

UNITED STATES OF AMERICA ACTING THROUGH
USDI BUREAU OF LAND MANAGEMENT
IDAHO STATE OFFICE
1387 S VINNELL WAY
BOISE ID 83709-1657

UNSER HAY CO LLC
PO BOX 2817
SUN VALLEY ID 83353

MICHAEL URRUTIA
PO BOX 218
SHOSHONE ID 83352

USDI- BUREAU OF LAND MANAGEMENT
IDAHO STATE OFFICE
1387 S VINNELL WAY
BOISE ID 83709-1657

LOY L VANSKIKE
PO BOX 183
FAIRFIELD ID 83327

VERNOY IRREVOCABLE TRUST
JESSE D RODMAN TRUSTEE
C/O MCGAVICK GRAVES PS
1102 BROADWAY STE 500
TACOMA WA 98402

ROGER D AND SALLY D TURNER
C/O CRAVATH SWAINE & MOORE
825 8TH AVE
NEW YORK NY 10019-7475

TWIN LAKES RESERVOIR & IRR CO LTD
C/O JIM REEDY
RT 1 BOX 1255
FAIRFIELD ID 83327

JANE AND ROBERT ULRICH
1050 AVONDALE
CLEVELAND OH 44121

UNITED STATES OF AMERICA ACTING THROUGH
USDA FOREST SERVICE
550 W FORT ST MSC 033
BOISE ID 83724

UNITED STATES OF AMERICA ACTING THROUGH USDA
FOREST SERVICE
550 W FORT ST MSC 033
BOISE ID 83724

J RANDOLPH UPDYKE
PO BOX 3421
KETCHUM ID 83340

US BIRDS LLC
400 BEACH DR NE #2003
ST PETERSBURG FL 33701

VALLEY CLUB OWNERS ASSN INC
C/O PRESIDENT
PO BOX 6733
KETCHUM ID 83340

BETTY AND ROBERT E VEEH
3268 HIGHLAWN DR
TWIN FALLS ID 83301

DAVID B AND VICKY VERST
PO BOX 3703
HAILEY ID 83333

VILLAGE CONDOMINIUMS GREYHAWK
PO BOX 2192
SUN VALLEY ID 83353

VORTEX INDUSTRIES
PO BOX 1147
SHOSHONE ID 83352

VPS MANARD LLC
C/O VICTOR M SMITH
533 SOSCOL AVE STE 100
NAPA CA 94559

KATHI AND ROBERT WAGNER
PO BOX 182
BELLEVUE ID 83313

CINDRA L PALMER AND MICHAEL E WALBERT
PO BOX 219
HAILEY ID 83333

WALBORN RENTALS LLC
C/O JACK WALBORN
PO BOX 268
MOUNTAIN HOME ID 83147

ANDREW J WALDERA
MOFFATT THOMAS BARRETT ROCK & FIELDS CHTD
PO BOX 829
BOISE ID 83701

MARGARET AND WILLIAM H WALKER
7056 W ROCKING Y LN
GLENNS FERRY ID 83623-5029

JIM J WALKER
DBA WALKER SAND & GRAVEL
PO BOX 400
BELLEVUE ID 83313

BENJAMIN A AND MARILYN A WALKER
PO BOX 499
BELLEVUE ID 83313

WALKER SAND & GRAVEL LTD CO
C/O BRAD WALKER
PO BOX 400
BELLEVUE ID 83313

DIANA L WHITING AND DOUGLAS C WALTON
PO BOX 1093
KETCHUM ID 83340

ANDREA S WARD
4200 SW TORR LN
PORTLAND OR 97221

LAWRENCE WARNER
155 TOWNSEND GULCH RD
BELLEVUE ID 83313

BROCK WEAVER
4380 N 1400 E
BUHL ID 83316

PATRICIA A WEAVER
PO BOX 1413
HAILEY ID 83333

JAY L AND MARY JANE WEBB
1421 GARFIELD ST
BOISE ID 83706

DOUG WEBB AND WEBB LANDSCAPE INC
PO BOX 444
SUN VALLEY ID 83353

ANNETTE WEBER
350 S HAMILTON #802
MADISON WI 53703

JESSICA M AND VICTOR K WEBER
4380 SANTA FE DR
FALLON NV 89406

ANNETTE WEBER
PO BOX 2814
HAILEY ID 83333

MICHAEL J AND RUTH WEEMS
PO BOX 455
BELLEVUE ID 83313

THOMAS W WEISEL
TOM WEISEL PARTNERS
ONE MONTGOMERY ST STE 3700
SAN FRANCISCO CA 94104

WELDON & MARILYN J WANKIER LIVING TRUST
PO BOX 194
SUN VALLEY ID 83353

LITA WEST
PO BOX 100
CAREY ID 83320

JERRY AND SUSAN WESTENDORF
707 W 470 N
SHOSHONE ID 83352

RAE DEAN WHITAKER AND WILLIAM C WHITAKER II
PO BOX 51
HAILEY ID 83333

JAMES D AND SHEILA WHITE
PO BOX 367
BELLEVUE ID 83313

MATS AND SONYA WILANDER
104 COVE CREEK RD
HAILEY ID 83333

LORRAINE AND RON WILCOX
PO BOX 4860
HAILEY ID 83333

JON AND ZOFIA WILKES
PO BOX 426
BELLEVUE ID 83313

GLORIA H AND R MASON WILKINS
217 CANYON RD
HAILEY ID 83333

MICHAEL E WILLARD
PO BOX 722
HAILEY ID 83333

HEATHER P AND TRAVIS T WILLIAMS
1173 S 1700 E
GOODING ID 83330

MARK AND SUSAN WILLIAMS
622 S 45 LANE W
RUPERT ID 83350

ROBERT E WILLIAMS
FREDERICKSEN WILLIAMS MESERVY
153 E MAIN ST
PO BOX 168
JEROME ID 83338

ALLEN WILLIAMS
PO BOX 1753
HAILEY ID 83333

SAMUEL AND SHELLEY THOMAS WILLIAMS
PO BOX 6729
KETCHUM ID 83340

ROBERT E WILLIAMS, ATTORNEY
153 E MAIN ST
PO BOX 168
JEROME ID 83338

WALTER BRUCE WILLIS
C/O VALLEY ENTERTAINMENT
126 S MAIN #B9
HAILEY ID 83333

CATHERINE AND DWIGHT L WILSON
PO BOX 1612
HAILEY ID 83333

WILSON FAMILY TRUST
PO BOX 877
BELLEVUE ID 83313

ANNE L WINGATE
PO BOX 2190
SUN VALLEY ID 83353

BRADLEY S AND MARY C WIRTH
PO BOX 718
KETCHUM ID 83340

MICHELLE AND SHANNON WOLF
PO BOX 433
FAIRFIELD ID 83327

WOLF SPRINGS RANCH
1208 E 200 N
FAIRFIELD ID 83327

EMER WOOD
22 ROPES END RD
BELLEVUE ID 83313

WOOD RIVER LAND TRUST CO
119 E BULLION ST
HAILEY ID 83333

WOOD RIVER VALLEY IRRIGATION DISTRICT #45
PO BOX 2223
HAILEY ID 83333

LINDA D WOODCOCK
PO BOX 2142
KETCHUM ID 83340

WOODEN HILL WATER WORKS
C/O HEIDI N HEATH
PO BOX 1676
KETCHUM ID 83340

JANE AND TOM WOODLAND
1606 S 2000 E
GOODING ID 83330

WOODLAND MEADOWS WATER ASSN
PO BOX 214
HAILEY ID 83333

WARD W WOODS
18433 US HWY 20
BELLEVUE ID 83313

WARD WOODS
C/O JIM SPECK
PO BOX 987
KETCHUM ID 83340

PRISCILLA B WOODS
C/O SPECK & AANESTAD
ATTN: JAMES P SPECK
PO BOX 987
KETCHUM ID 83340

KATHARINE, PRISCILLA AND WARD W WOODS
PO BOX 964
HAILEY ID 83333

JUNE I AND KENNETH D WORTHINGTON
41 KILPATRICK BRIDGE RD
BELLEVUE ID 83313

WRIGHT CHILDRENS TRUST
C/O MICHAEL WRIGHT TRUSTEE
6016 RUBY RIDGE COVE
HOLLADAY UT 84121

DOUGLAS AND MARILYN WYNN
344 GLENDALE RD
BELLEVUE ID 83313

ELAINE AND STEPHEN WYNN
C/O WYNN RESORTS
3131 LAS VEGAS BLVD S
LAS VEGAS NV 89109

SHELDON YANKE
Y3 RANCH
PO BOX 5405
BOISE ID 83705

WILLIAM M YINGST
4135 CREEK VIEW DR
TWIN FALLS ID 83301

W SCOTT YOUNG
211 BROADFORD RD
HAILEY ID 83333-8443

LA VONA AND WALLACE YOUNG
PO BOX 583
HAILEY ID 83333

FLORENCE M YOUNG
PO BOX 736
PICABO ID 83348

CATHY ZACCARDI
137 BASELINE RD
BELLEVUE ID 83313