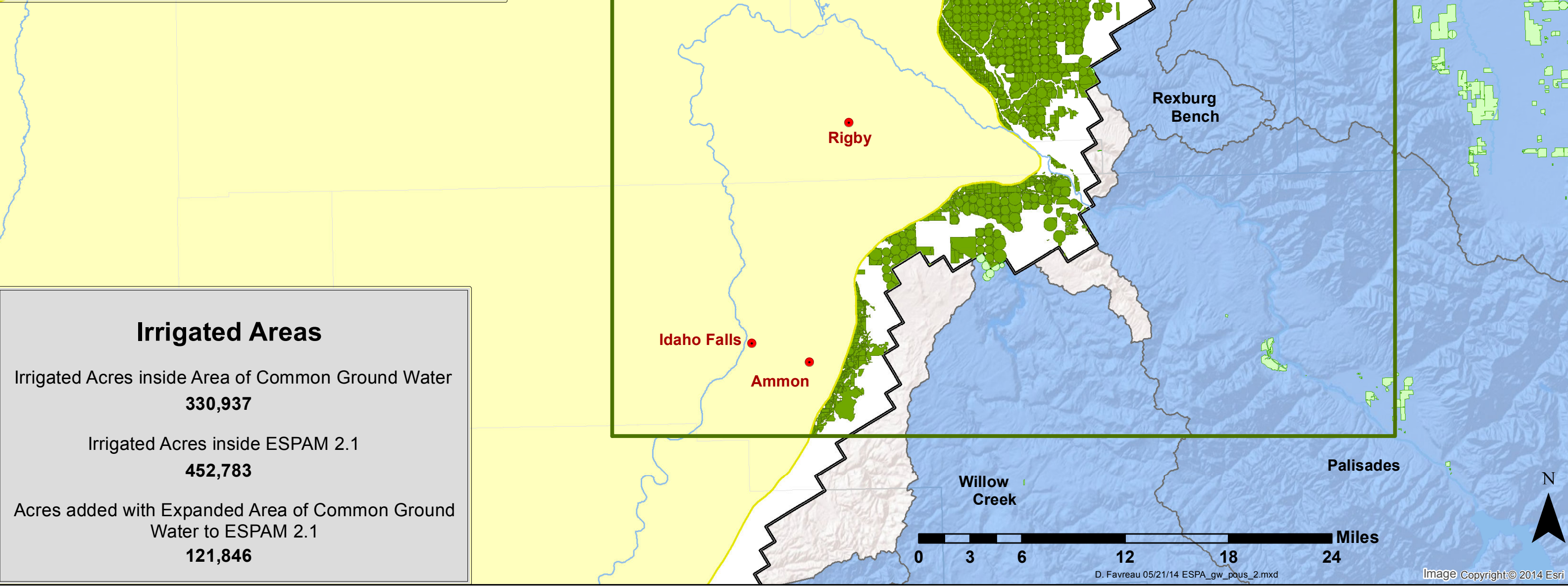


# Irrigated Lands outside Area of Common Ground Water Supply in Eastern Idaho Area

- Eastern Idaho Area
- Tributary Basins Place of Use (POU)
- ESPA Area of Common Ground Water Supply
- ESPAM 2.1 POU
- ESPAM 2.1 Boundary
- ESPA Tributary Basin



## Irrigated Areas

Irrigated Acres inside Area of Common Ground Water	330,937
Irrigated Acres inside ESPAM 2.1	452,783
Acres added with Expanded Area of Common Ground Water to ESPAM 2.1	121,846