



# Big & Little Wood River Delivery Calls – 2015

## Preliminary Overview of Delivery Call Water Rights

Tim Luke, IDWR

Shoshone, ID; 05/04/2015



# Summary of Delivery Call Rights

## Big & Little Wood Rivers

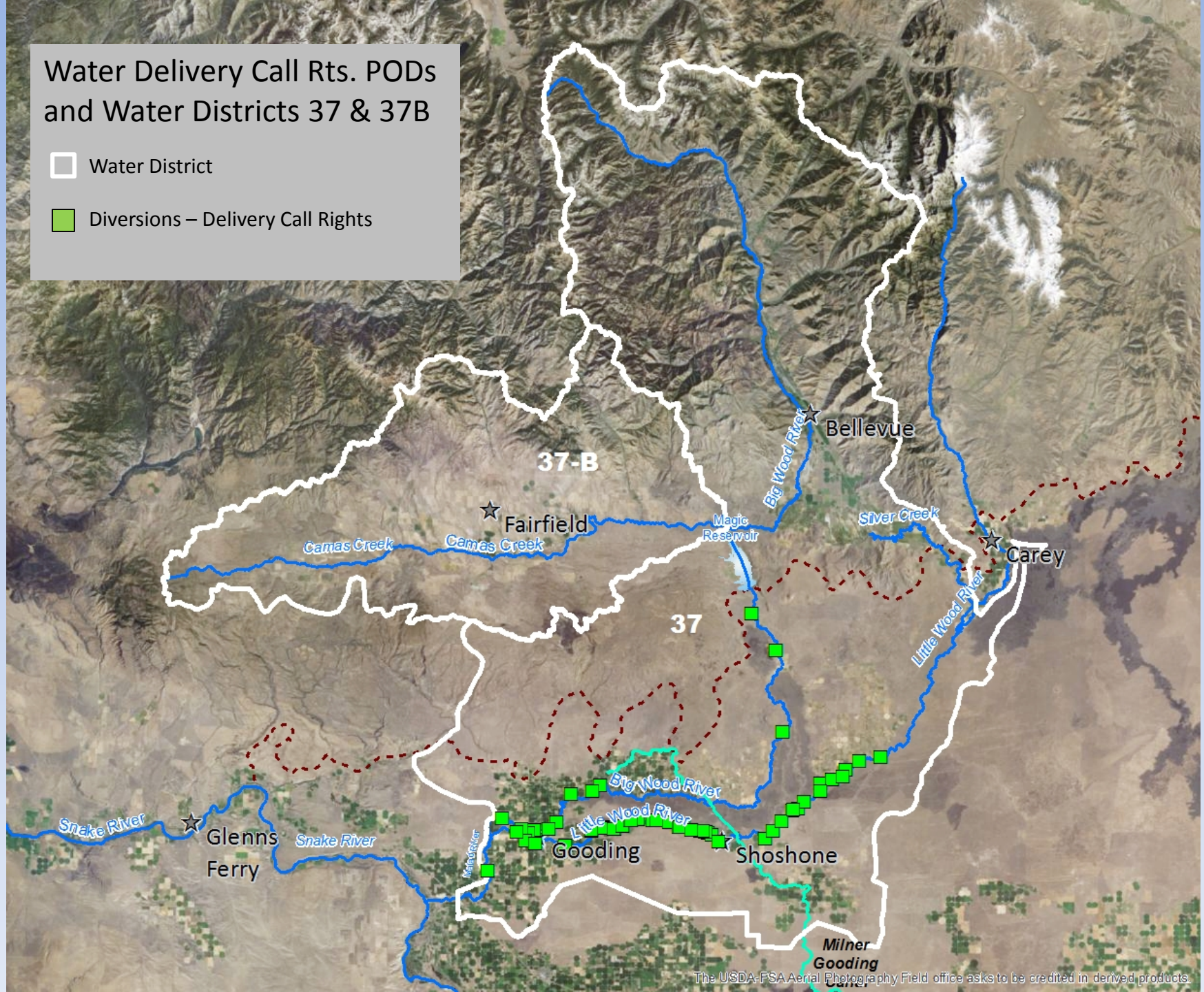
- 80 Water Rights Total
- 39 Separate Owners
  - 6 rights owned by Big Wood Canal Co. (BWCC)
- 73 Irrigation Rights (154.2 cfs)
- 1 Winter Stock Right (75 cfs – BWCC)
- 6 Ground Water Recharge Rts (7.2 cfs - City of Gooding)
- Overlapping water rights from different water sources
  - Big Wood R, Little Wood R, Snake R, ground water



# Water Delivery Call Rts. PODs and Water Districts 37 & 37B

Water District

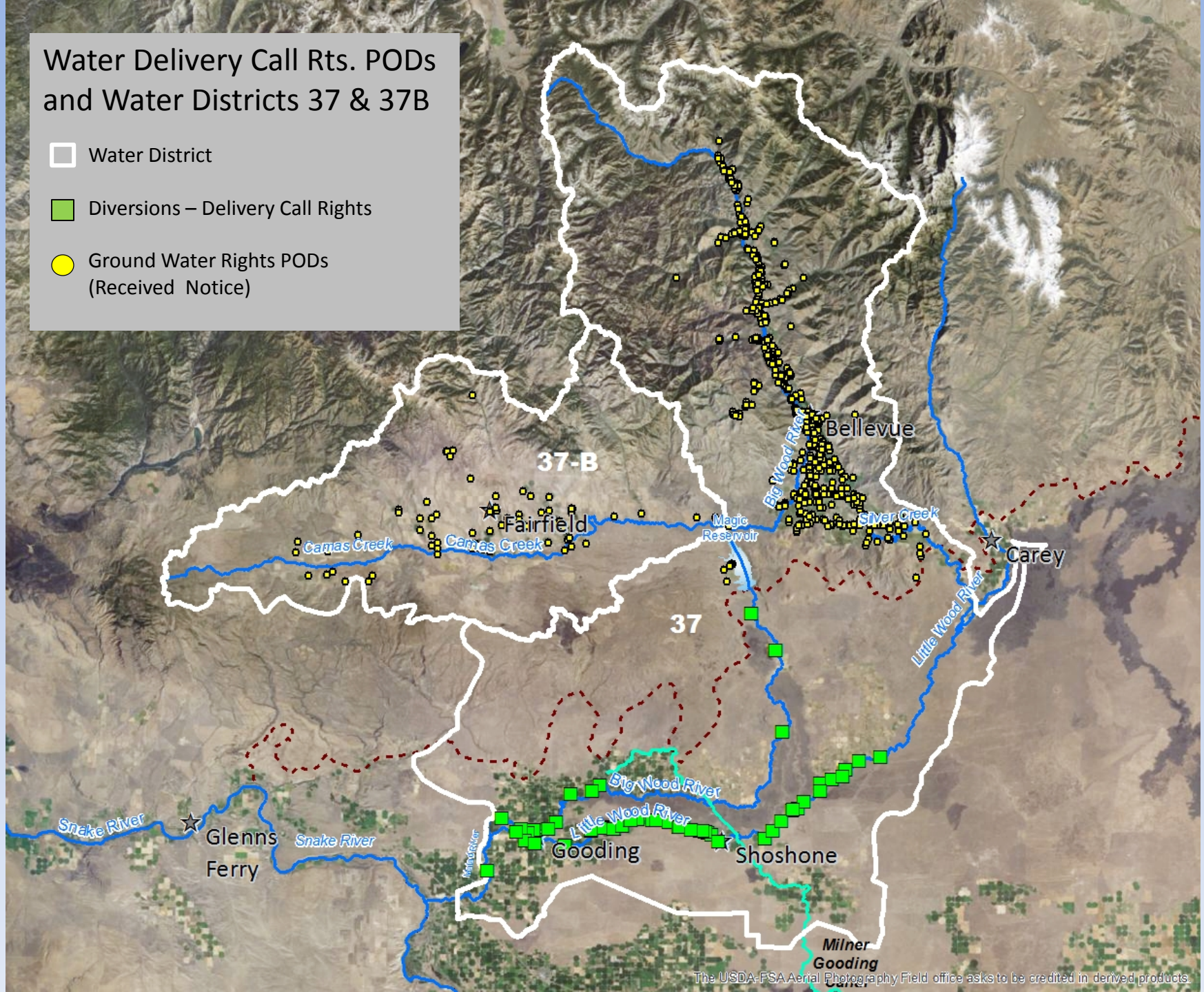
Diversions – Delivery Call Rights





# Water Delivery Call Rts. PODs and Water Districts 37 & 37B

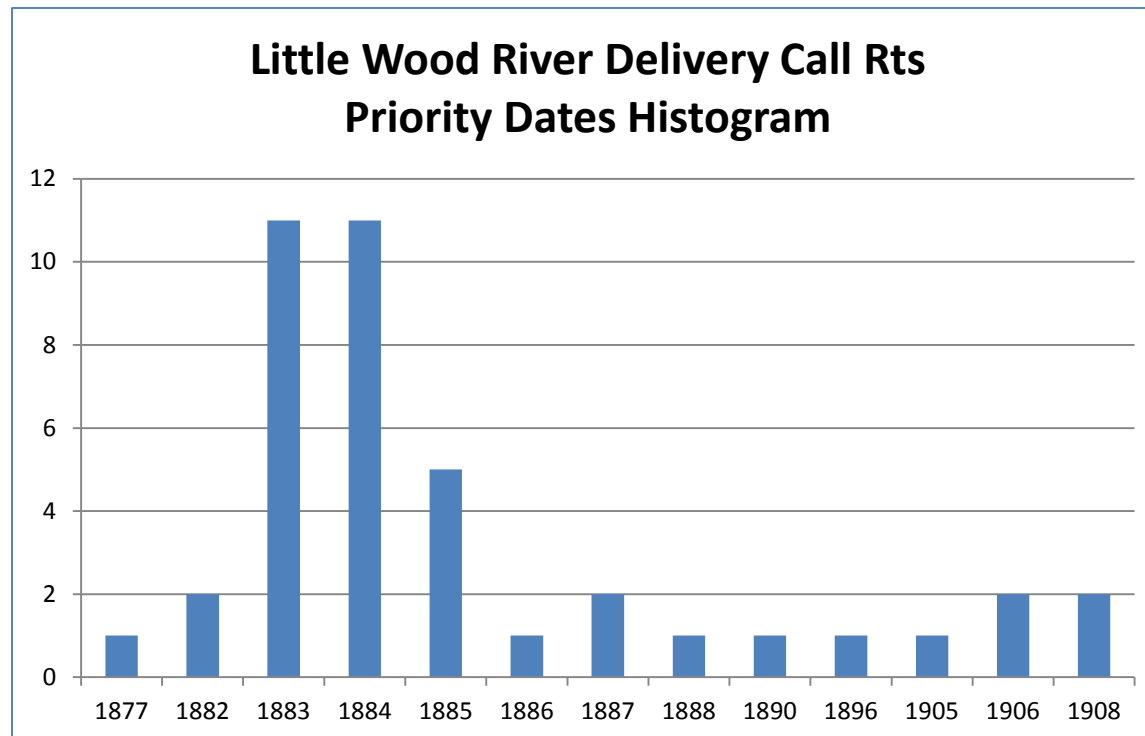
- Water District
- Diversions – Delivery Call Rights
- Ground Water Rights PODs (Received Notice)





# Summary of Delivery Call Rights

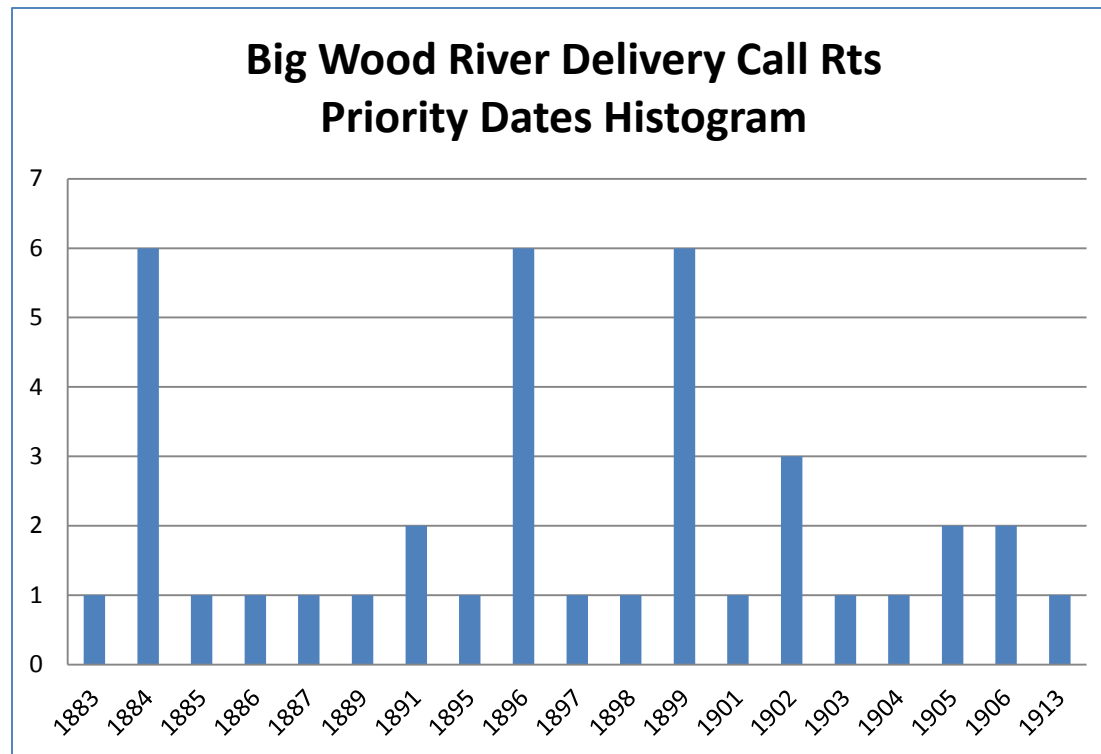
- Little Wood River
  - 41 Water Rights total





# Summary of Delivery Call Rights

- Big Wood River
  - 39 Water Rights total





# Summary of Delivery Call Rights


## Big & Little Wood Rivers

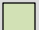
### Irrigated Acres per Water Right Decrees

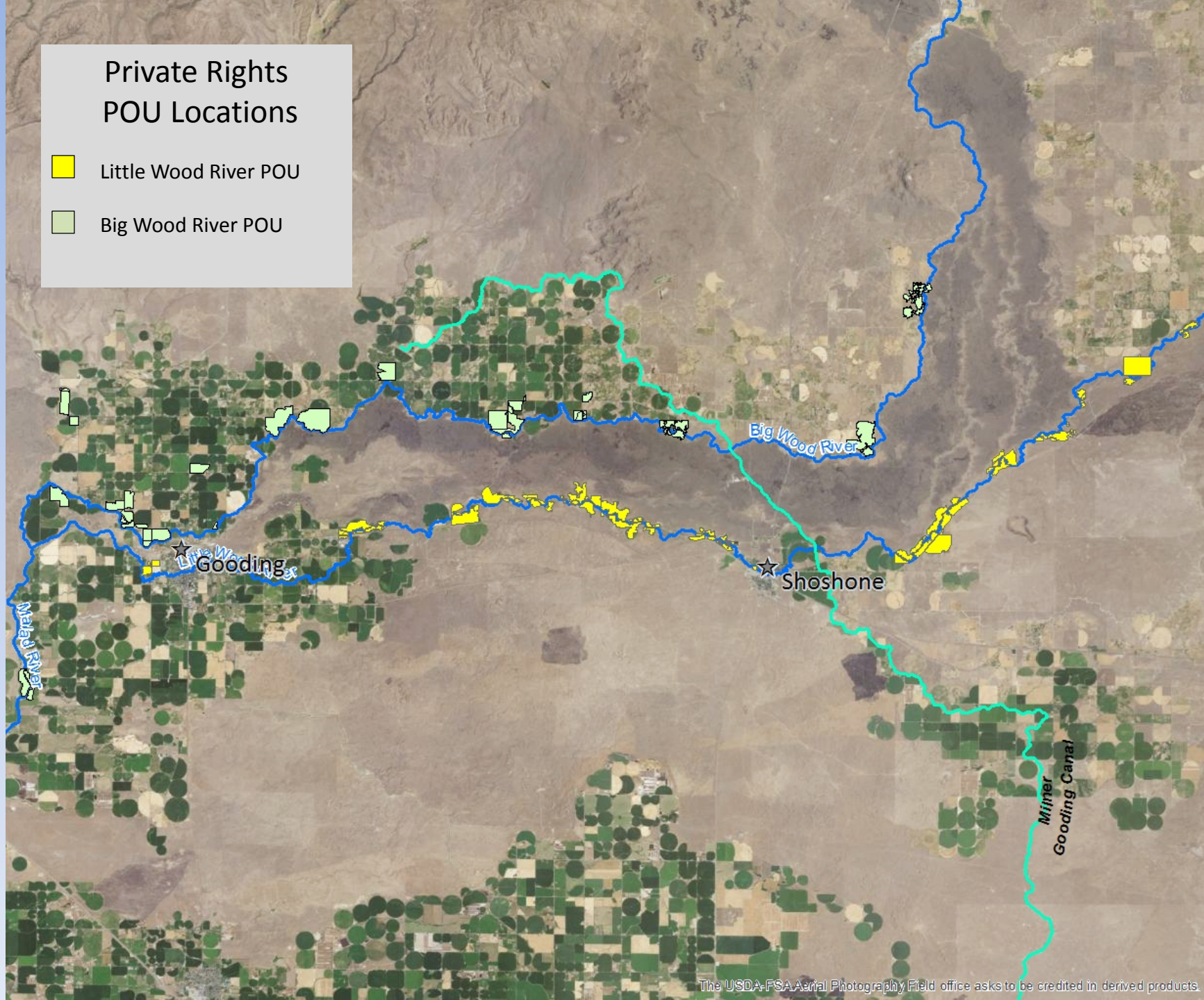
- Individual owned rights: 4,736 acres



## Private Rights POU Locations

 Little Wood River POU

 Big Wood River POU





# Summary of Delivery Call Rights

## Big & Little Wood Rivers

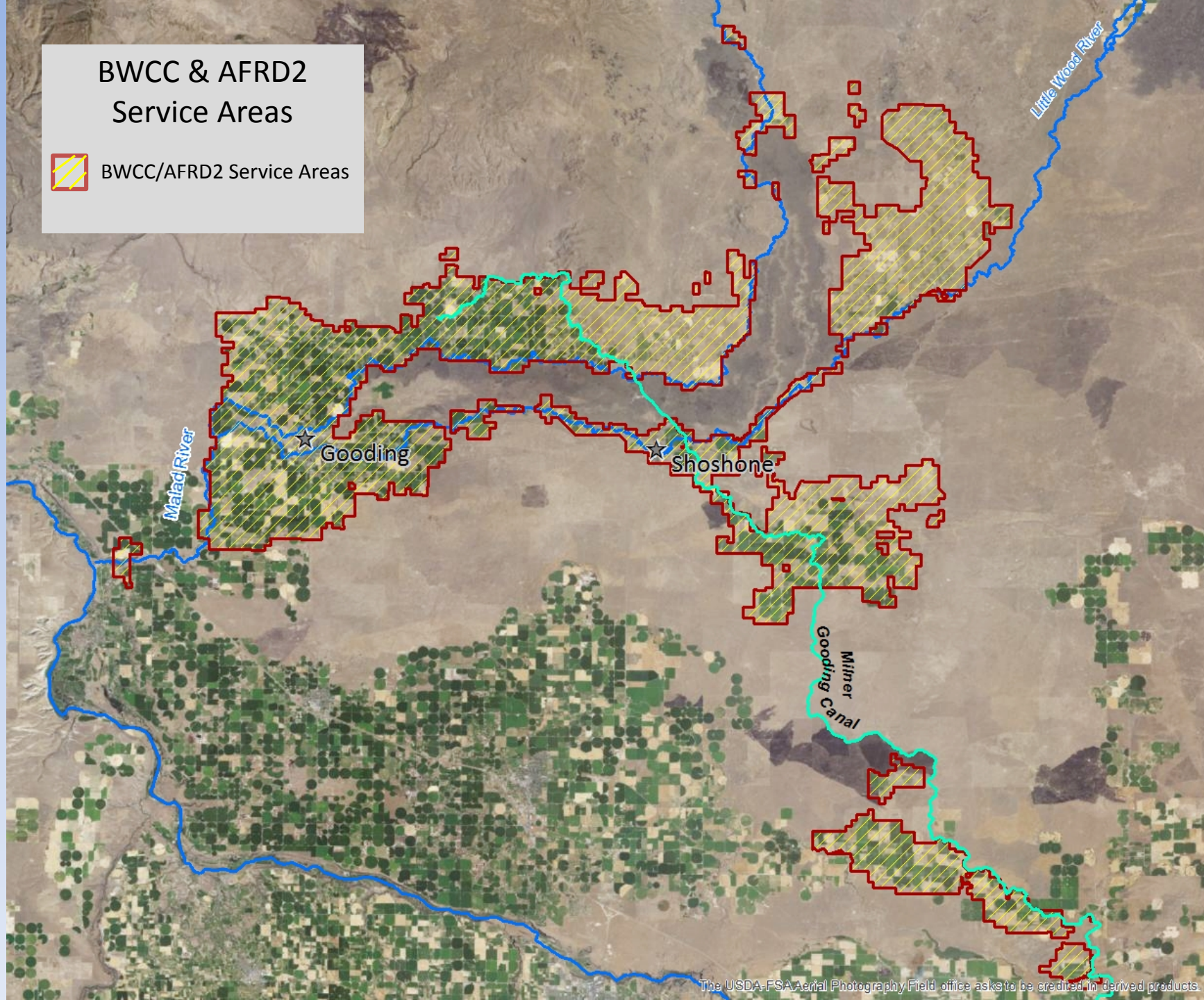
### BWCC Irrigated Acres per Water Right Decrees

- Irrigated acres within large service area
  - Big & Little Wood River rights limited to 74,000 acres
  - **Little Wood River rights** limited to 39,683 acres w/in 74,000 acres
  - Same service area as American Falls Reservoir Dist. No. 2 (AFRD2)
    - AFRD2 delivers Snake River water via Milner Gooding Canal
    - AFRD2 rights limited to 62,361 acres

# BWCC & AFRD2 Service Areas



BWCC/AFRD2 Service Areas





# Summary of Delivery Call Rights

## Big & Little Wood Rivers - Diversions

### Total Diversions

- ❑ ≈ 55 Water Rt. Decree PODs; 43 PODs Used;
  - Additional points of injection & points of re-diversion

### Little Wood River Diversions

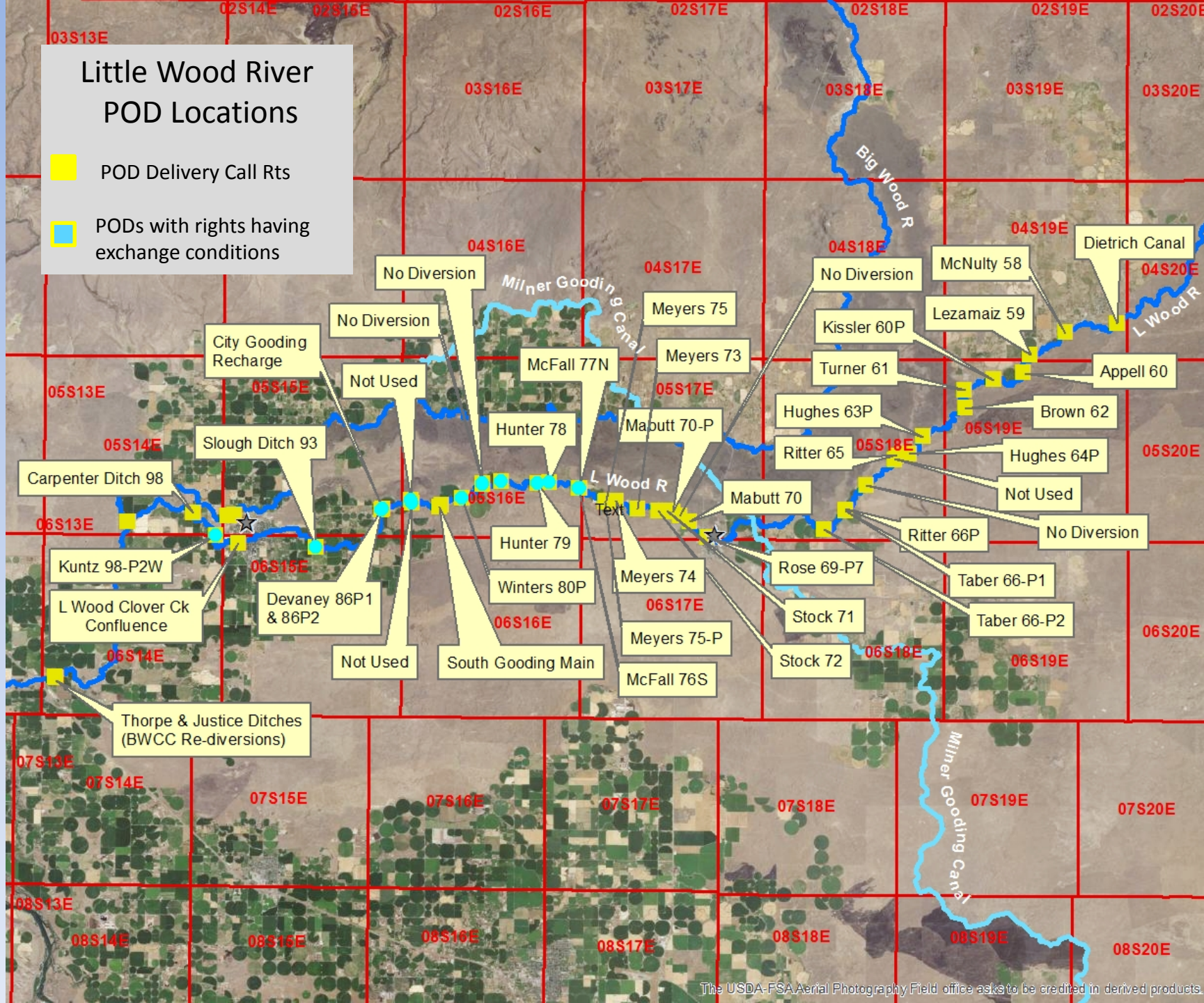
- ❑ 42 Water Rt. Decree PODs; 34 PODs Used
  - ❑ BWCC Rts.: 7 PODs, 2 Injections, 4 Re-diversions

### Big Wood River Diversions

- ❑ 13 Water Rt. Decree PODs; 9 PODs Used



# Little Wood River POD Locations

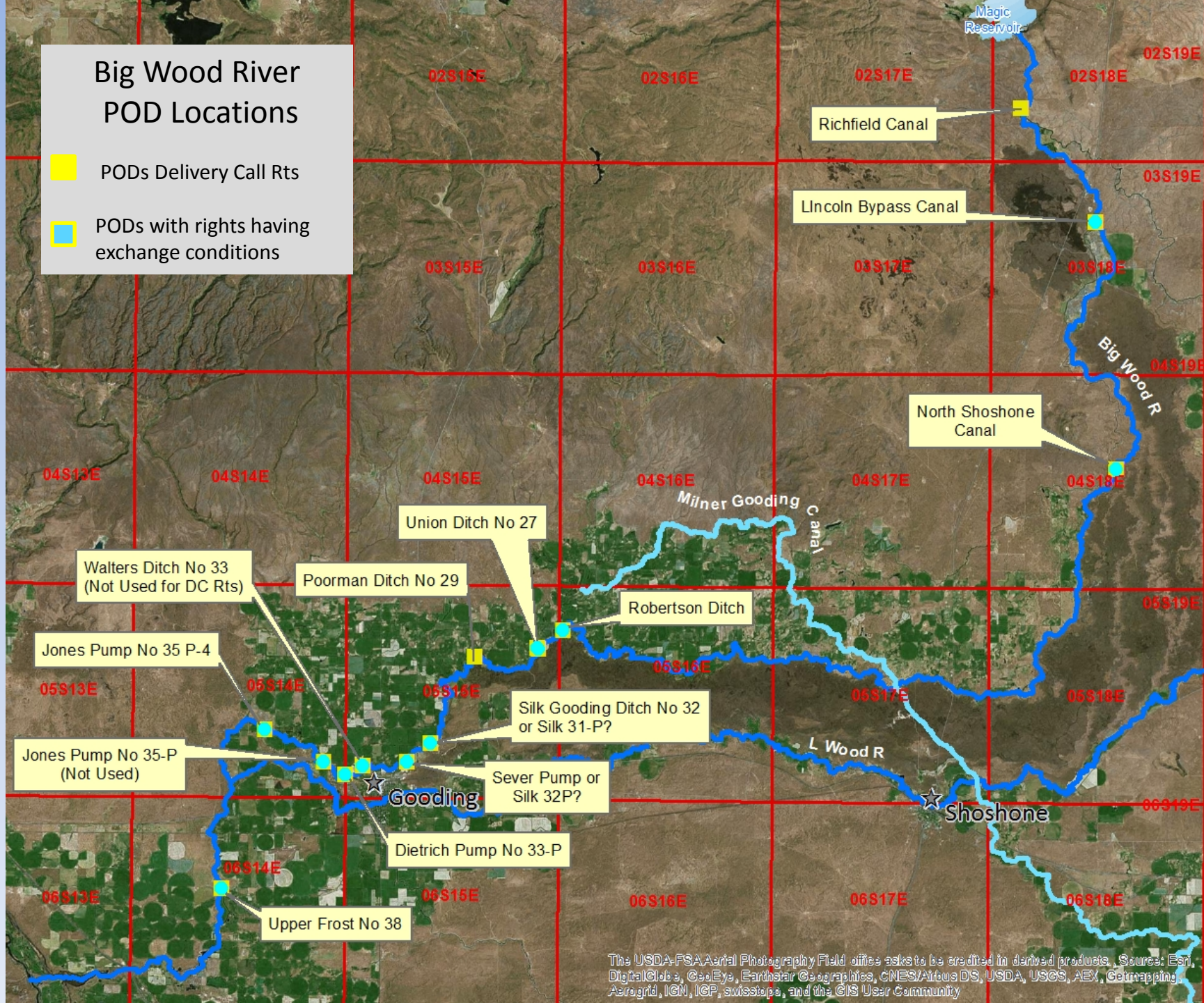
- POD Delivery Call Rts
- PODs with rights having exchange conditions





# Big Wood River POD Locations

-  PODs Delivery Call Rts
-  PODs with rights having exchange conditions



# Summary of Delivery Call Rights

## Big & Little Wood Rivers

### Water Right Exchange Condition (Condition 161)

- Delivery of right subject to exchange provisions per Bureau of Reclamation contracts between United States, BWCC and AFRD2
  - 40 of 80 Delivery Call rights have this condition
    - » 20 rights from Big Wood River
    - » 20 rights from Little Wood River
    - » POU's are below Milner Gooding Canal
    - » BWCC Little Wood rights do not have this condition



# Summary of Delivery Call Rights

## Big & Little Wood Rivers

### Combined use Conditions

- Use of right is combined with water from BWCC and/or AFRD2
  - 55 of 80 Delivery Call rights have this condition
    - » 30 rights from Big Wood R. (incl. 18 rts with 161 cond.)
    - » 25 rights from Little Wood R. (incl. 11 rts with 161 cond.)
    - » POU's below and above Milner Gooding Canal
    - » 6 BWCC Little Wood Rts. do not have this condition

# Summary of Delivery Call Rights

## Big & Little Wood Rivers

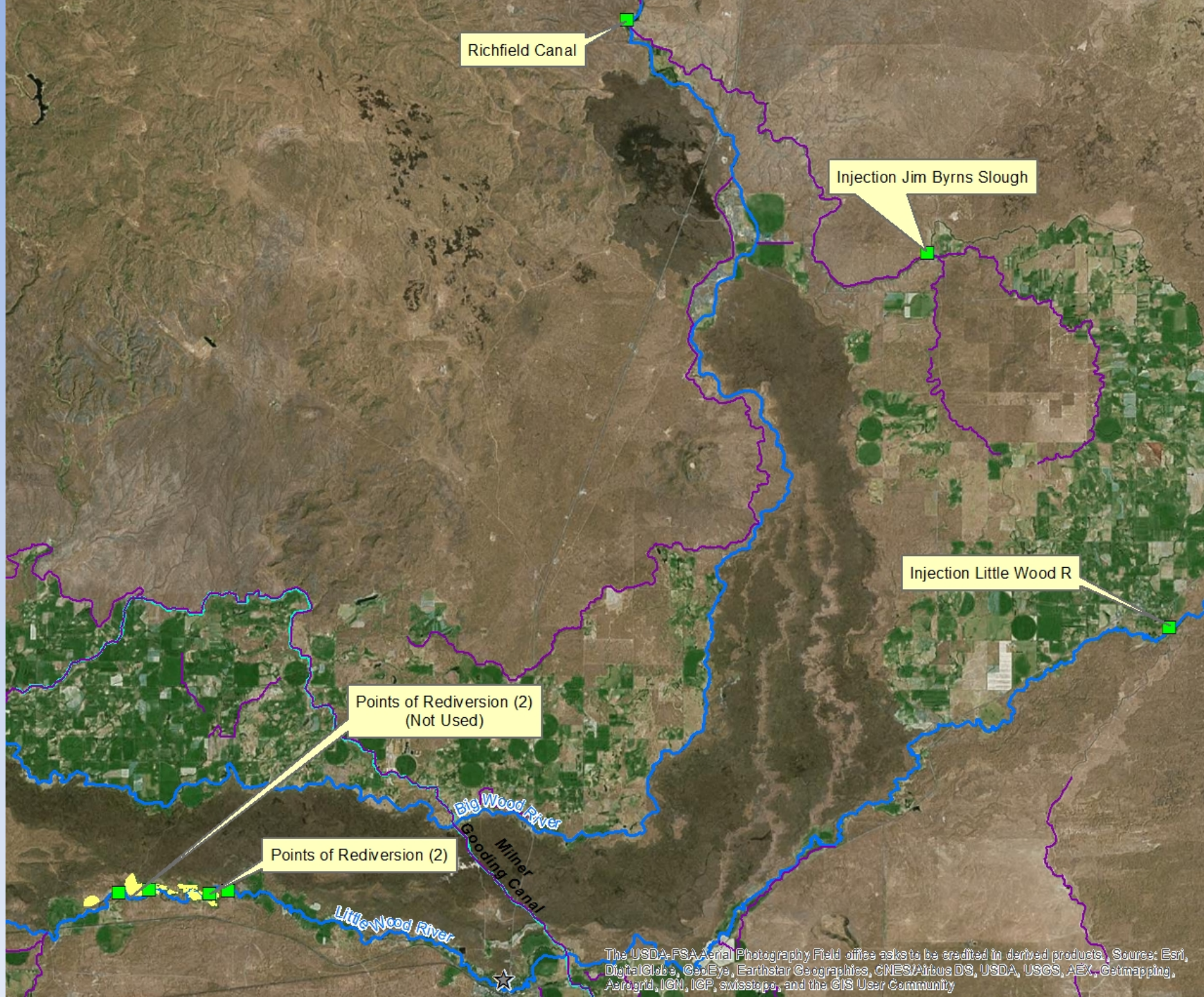
- 66 of 80 Rights have either Exchange Condition or BWCC/AFRD2 Combined Use Condition
  - POU for all 80 rights are within BWCC/AFRD2 POU service areas
  - Rights without these conditions may still be combined with BWCC and/or AFRD2



# Call Rights – Delivery Example

## Example 1:

- 1899 Priority Rt from Big Wood R (2.3 cfs)
  - Diverted at Richfield Canal with other river rights & storage
  - Injected to Jim Byrns Slough ( $\approx$  10 miles)
  - Injected to Little Wood River ( $\approx$  10 miles)
  - Re-diverted from Little Wood R.  $\approx$ 24 miles downstream at 4 points of re-diversion (2 points not used per watermaster)
  - Subject to 27% conveyance loss
  - Priority cut different than other Big Wood Rts per WM (Cottonwood Decree)
  - Right is combined with two other Little Wood River rights, plus water from AFRD2 as per water right condition



Richfield Canal

Injection Jim Byrns Slough

Injection Little Wood R

Points of Rediversion (2)  
(Not Used)

Points of Rediversion (2)

Big Wood River

Gooding Canal

Milner

Little Wood River

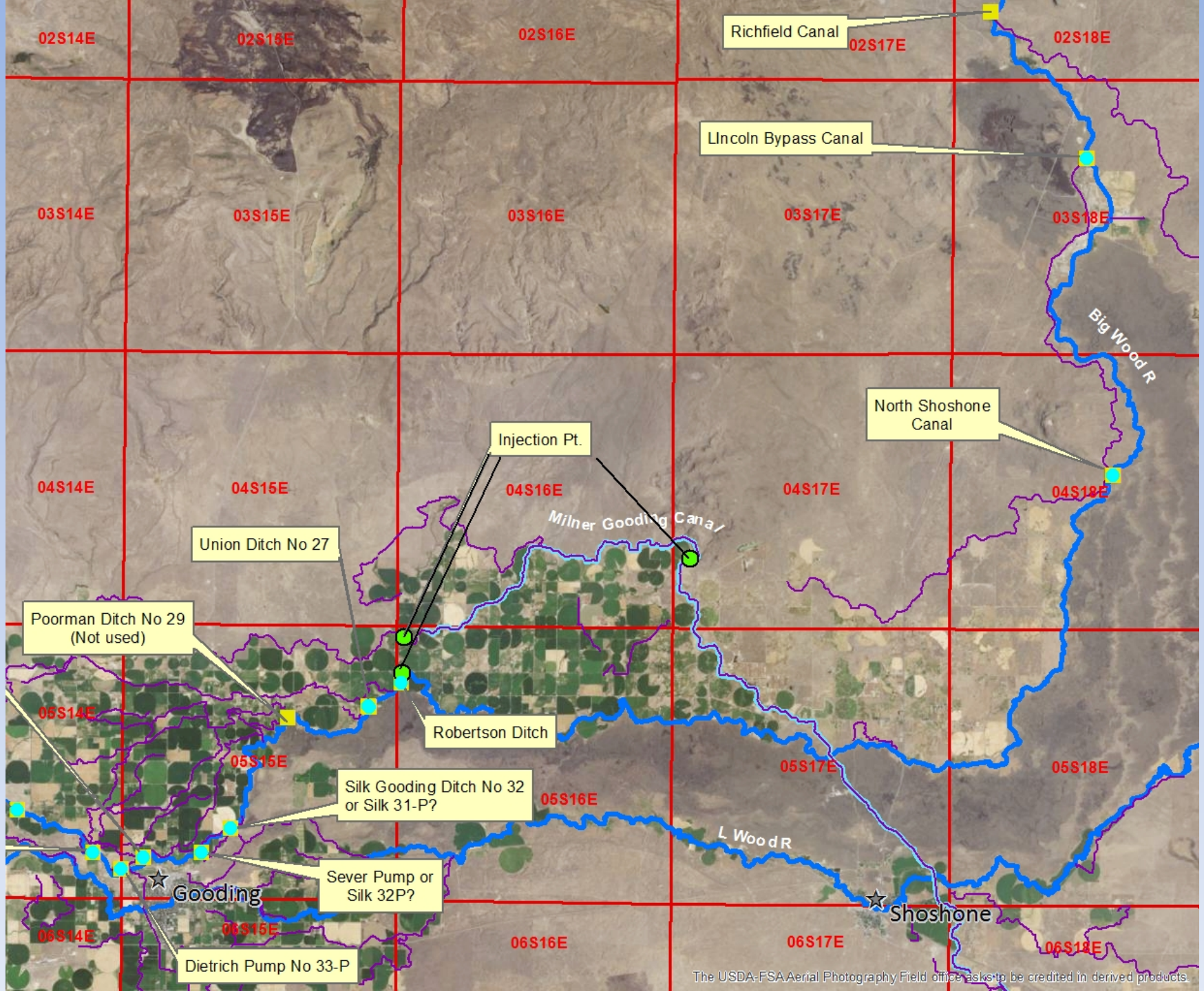
The USDA-FSA Aerial Photography Field office asks to be credited in derived products. Sources: Esri, DigitalGlobe, GeoEye, Earthstar Geographics, CNES/Airbus DS, USDA, USGS, AEX, Getmapping, Aerogrid, IGN, IGP, swisstopo, and the GIS User Community



# Call Rights – Delivery Example

## Example 2:

- Various Priority Rts from Big Wood River
  - Water right PODs on Big Wood R northeast of Gooding
  - Per watermaster, priority delivery based on inflows to Magic Res. even though Big Wood flows near Gooding may be different and include injections of AFRD2, BWCC, return flows etc.
  - Water right conditions: exchange (161) & combined w/AFRD2 and/or BWCC





# Call Rights – Delivery Example

## Example 3:

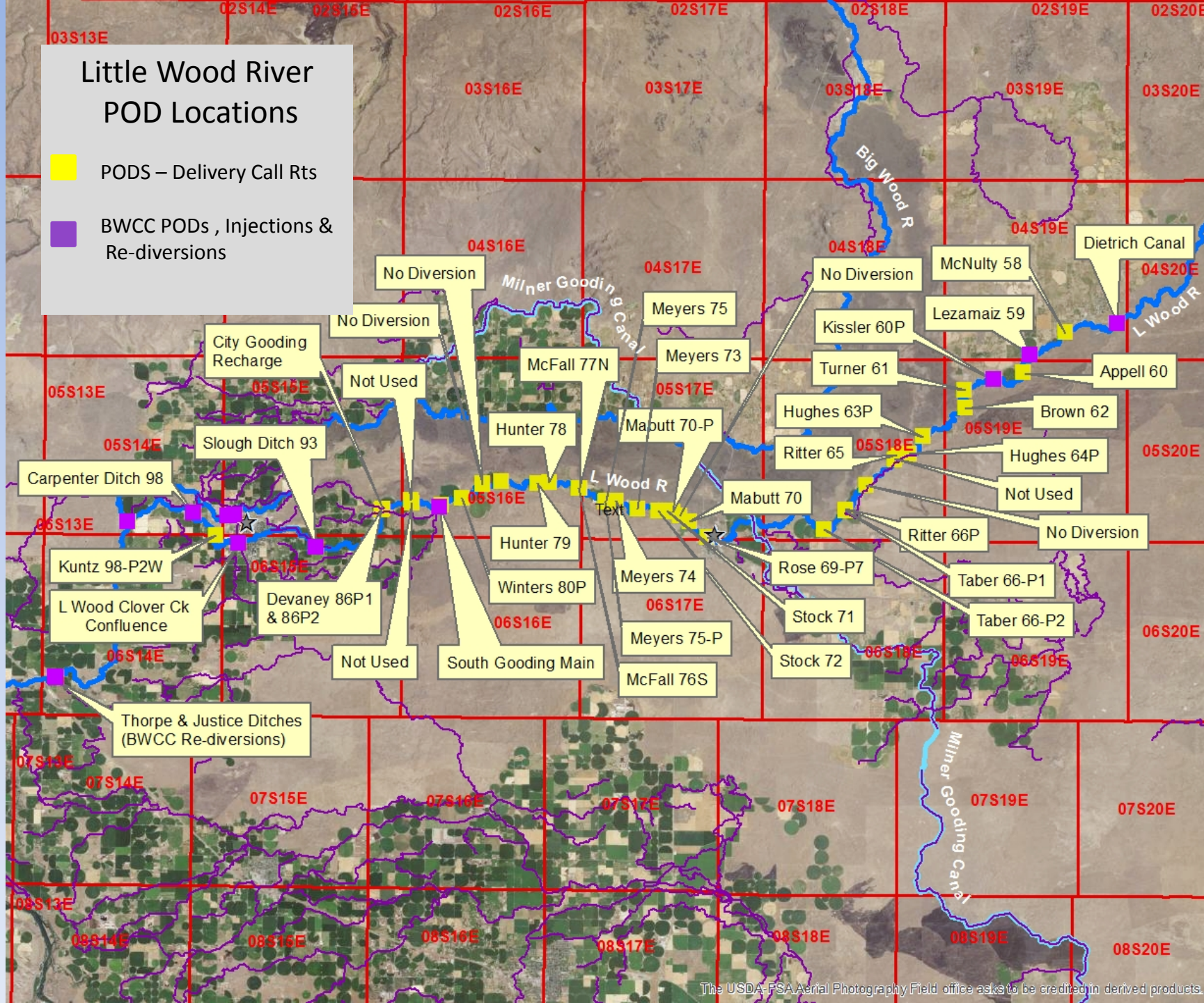
- BWCC Irrigation Rts. from Little Wood River
  - 5 rights with various priority dates
  - All 5 rights have 7 PODs, 2 injection points, 4 points of re-diversion
  - Rights are diverted or commingled with other water rights & sources

# Little Wood River POD Locations

-  PODS – Delivery Call Rts
-  BWCC PODs , Injections & Re-diversions

PODS – Delivery Call Rts

 BWCC PODs , Injections & Re-diversions





## Additional Information Needs

- Confirm water right POD locations
  - (diversions/injections/re-diversions)
- Confirm water right POU locations & overlaps
- Confirm if private right owners are BWCC/AFRD2 shareholders
- Obtain understanding of water exchanges per water right condition no. 161

# Additional Information Needs

- Document diversion measuring devices/methods
  - Include injections & re-diversions
- Obtain delivery records from all water sources
- Gather information regarding delivery shortages
  - Info from users, delivery entities, IDWR analysis/tools



