



IWRB Managed Recharge Program

Environmental Resources Technical Working Group Meeting

Josh Morell

Recharge Program

October 30, 2024

Total Natural Flow Recharge Volume October 2023 - June 2024

384,039.7 AF

Lower Valley Recharge Volume October 2023 - June 2024

275,651 AF

BWCC

9,271 AF

AFRD2

59,265 AF

NSCC

175,450 AF

BID

1,573 AF

TFCC

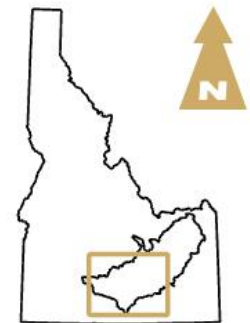
14,092 AF

SWID

16,000 AF

Twin Falls

Updated as of
10/29/2024



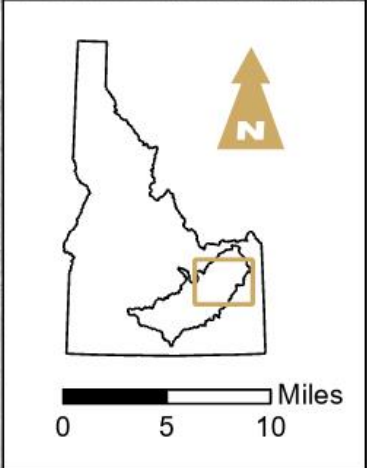
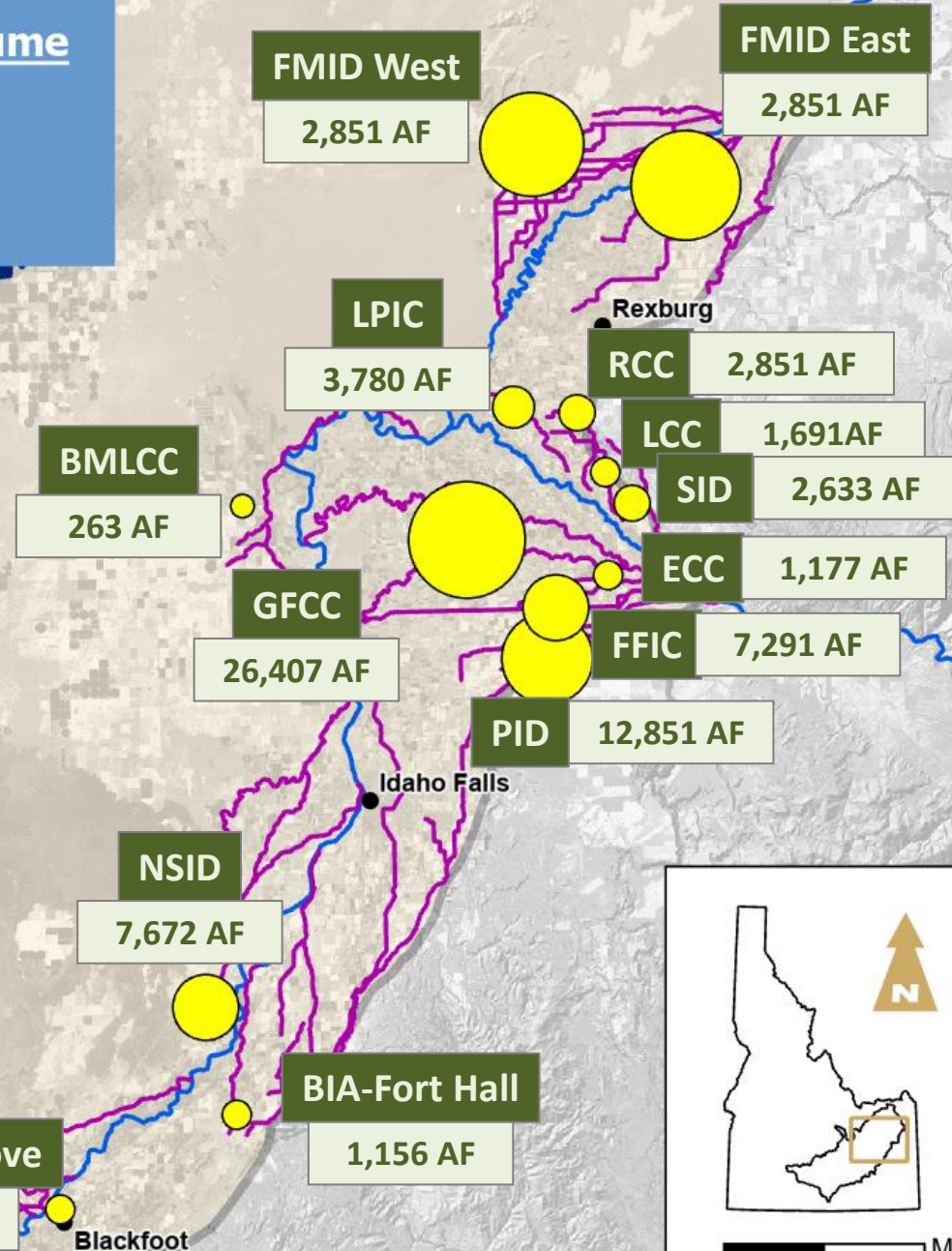
0 5 10 Miles

**Total Natural Flow Recharge Volume
October 2023 - June 2024**

384,039.7 AF

**Upper Valley Recharge Volume
October 2023 - June 2024**

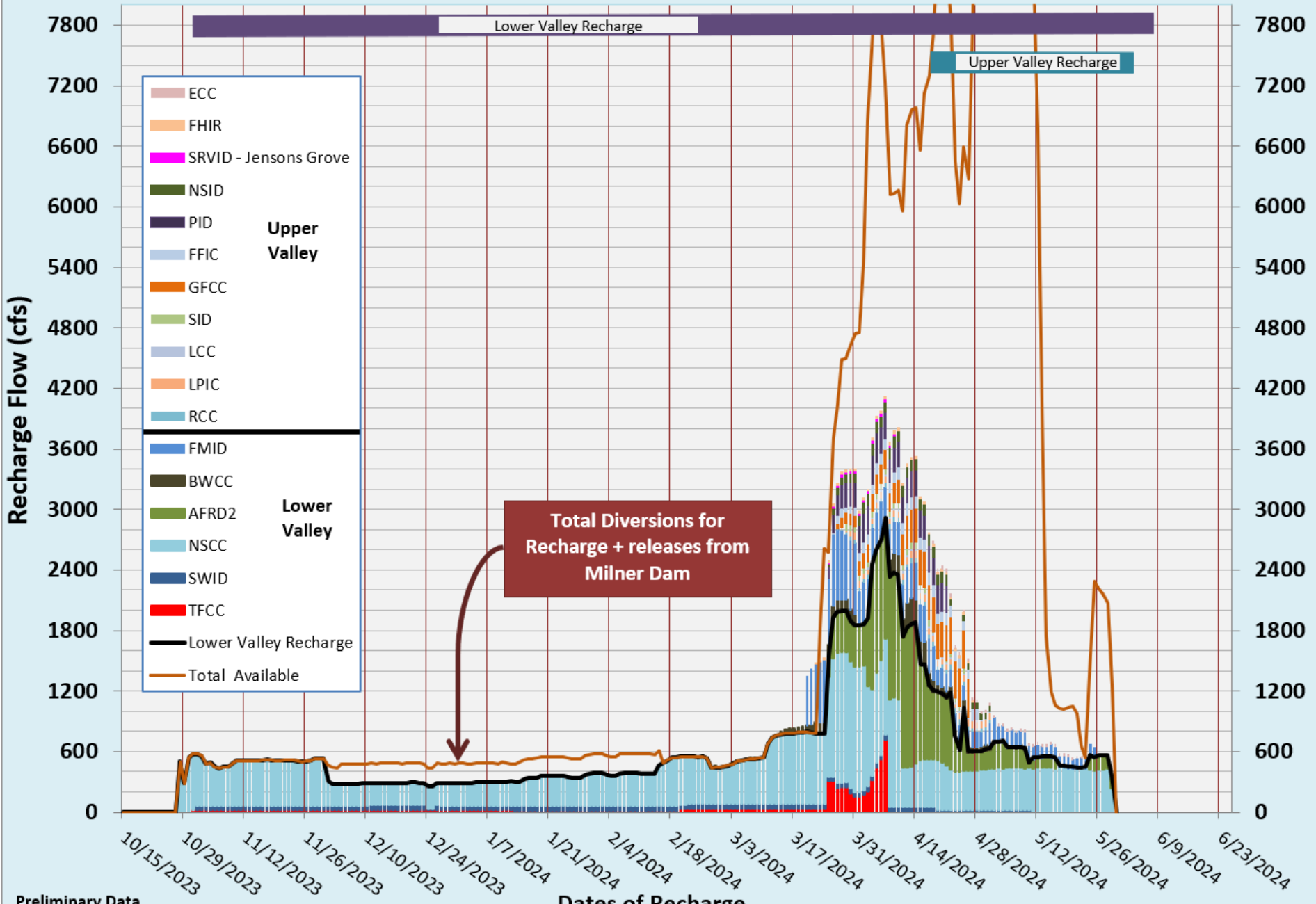
108,385.7 AF



Updated as of
10/29/2024

IWRB Natural Flow Recharge - 2023/2024 Season

Total Volume of Recharge = 379,397 af (October 28, 2023 - May 29, 2024)

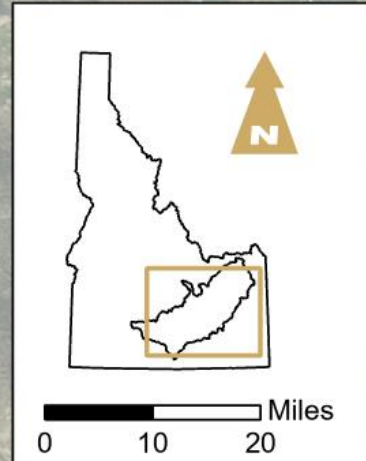
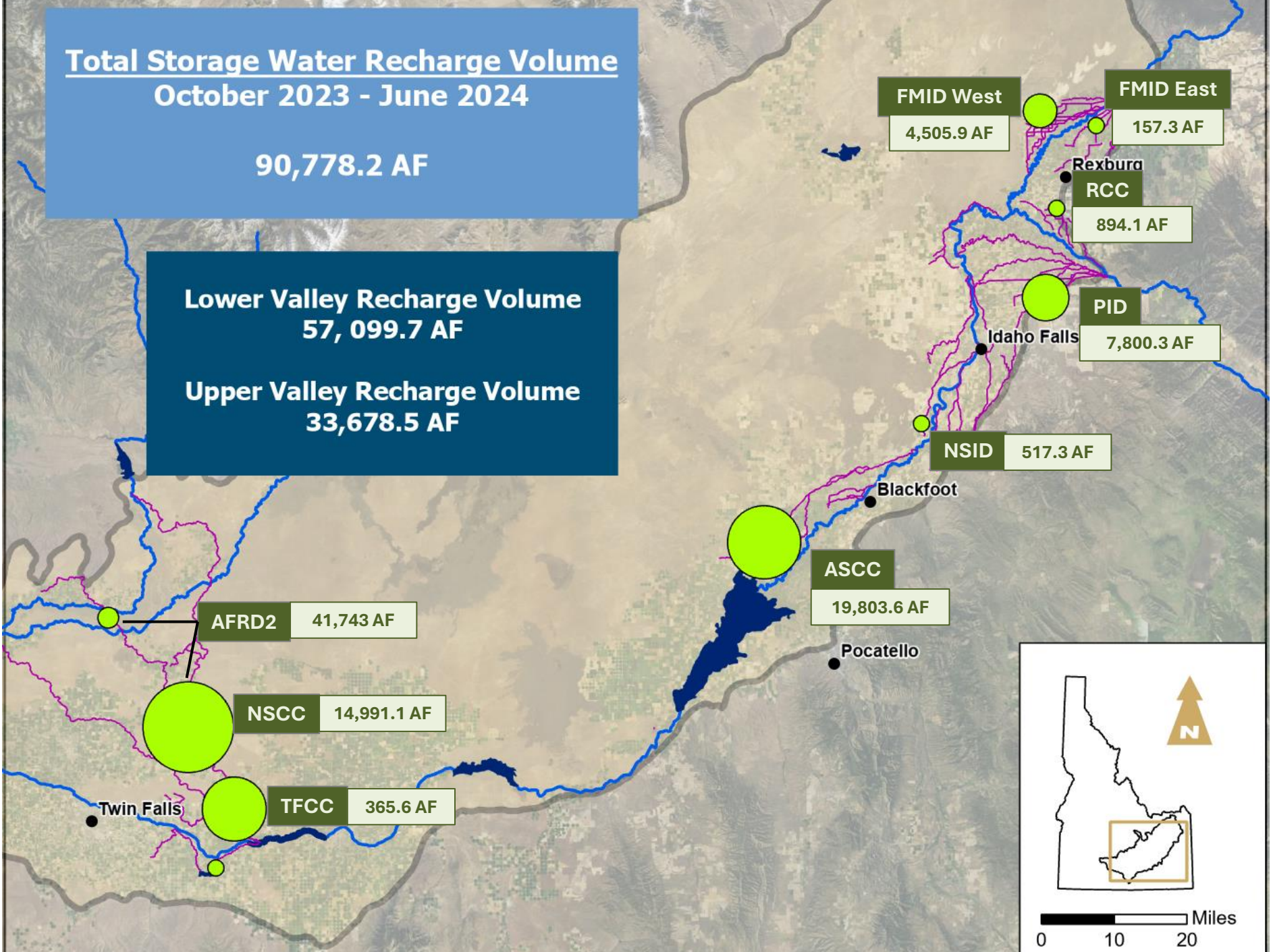


**Total Storage Water Recharge Volume
October 2023 - June 2024**

90,778.2 AF

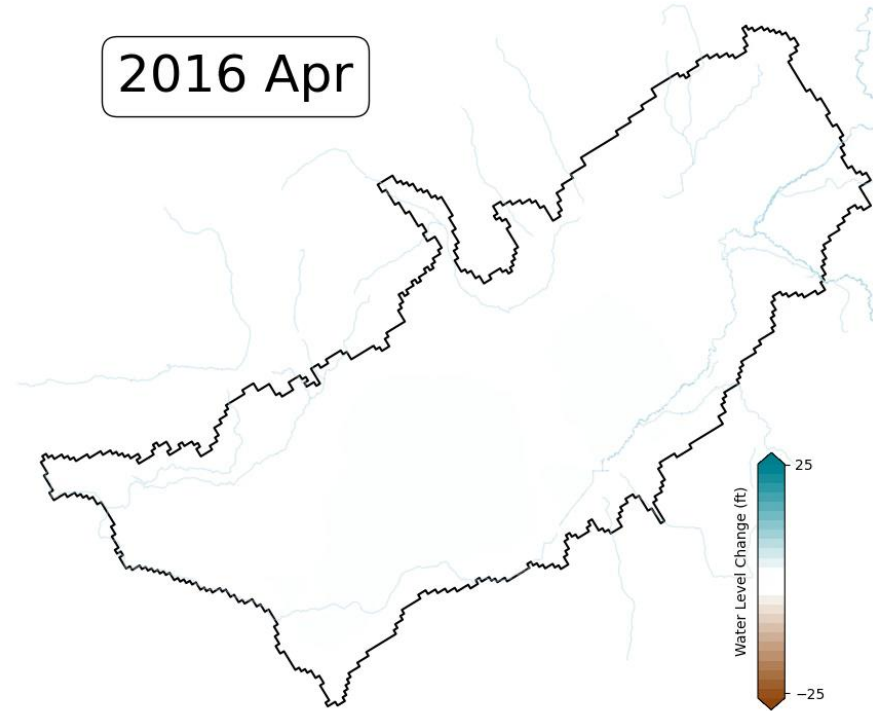
**Lower Valley Recharge Volume
57,099.7 AF**

**Upper Valley Recharge Volume
33,678.5 AF**

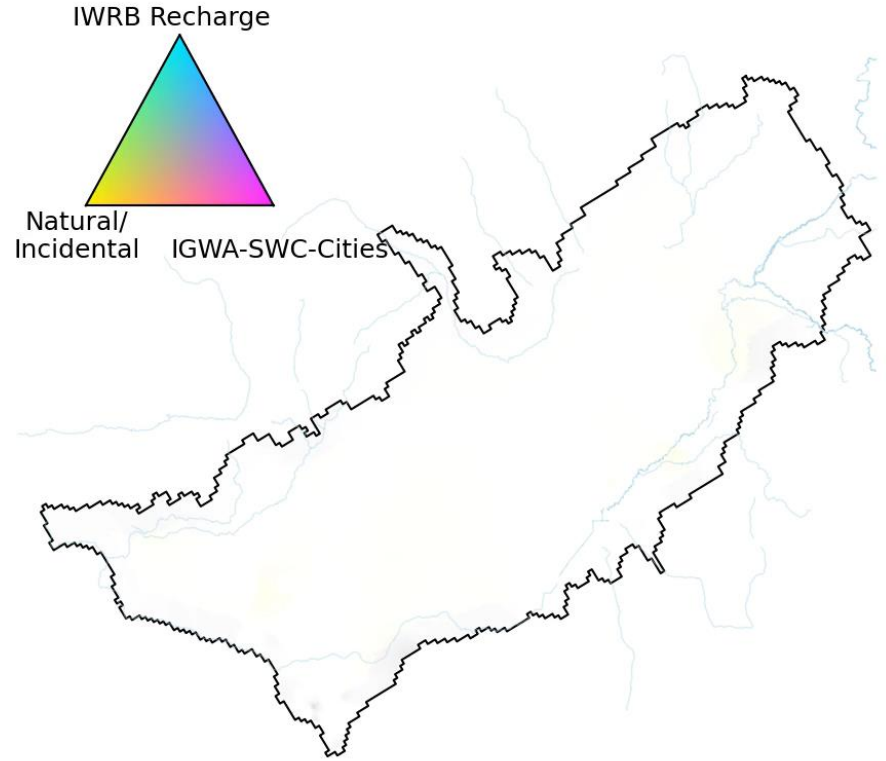


Observed Water Level Change since spring 2016

2016 Apr



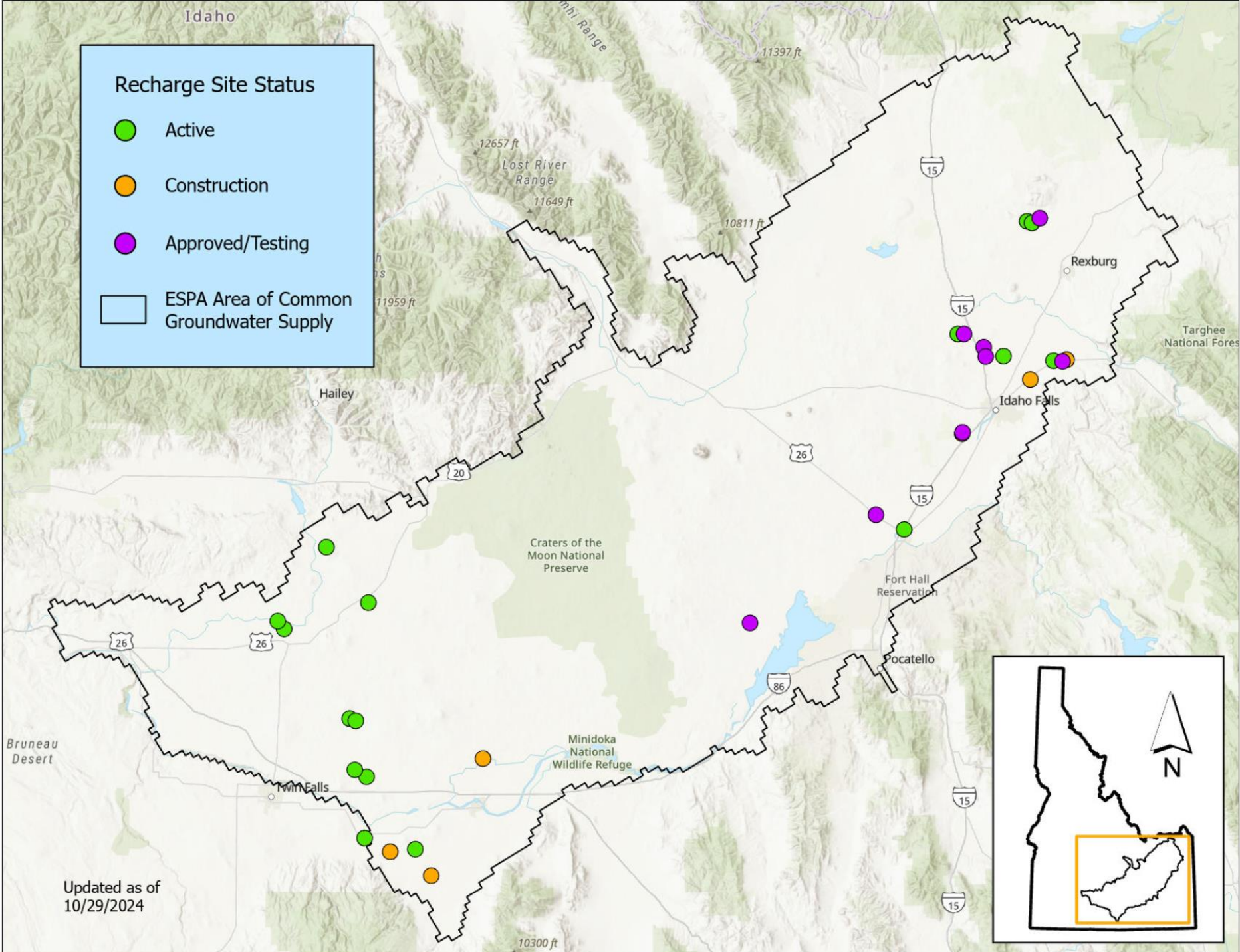
Cause of Water Level Change



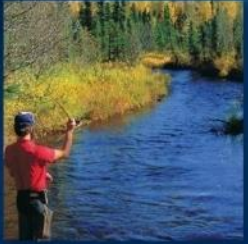
Idaho

Recharge Site Status

- Active
- Construction
- Approved/Testing
- ESPA Area of Common Groundwater Supply



Updated as of 10/29/2024



Questions

[Recharge Website](#)