



IWRB Managed Recharge Program

Upper Snake River Advisory Committee Meeting

Neal Farmer

Recharge Program

October 30, 2023

Total Natural Flow Water Recharged

10,105 af

IWRB Recharge - Oct 28 to Oct. 30

Diversion Rate
Median: 1823 cfs
Max: 2132 cfs

AFRD2

7,395 AF

NSCC

2,571 AF

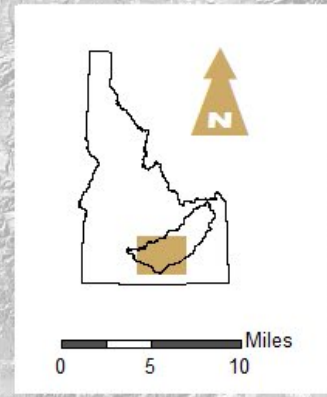
TFCC

138 AF

SWID

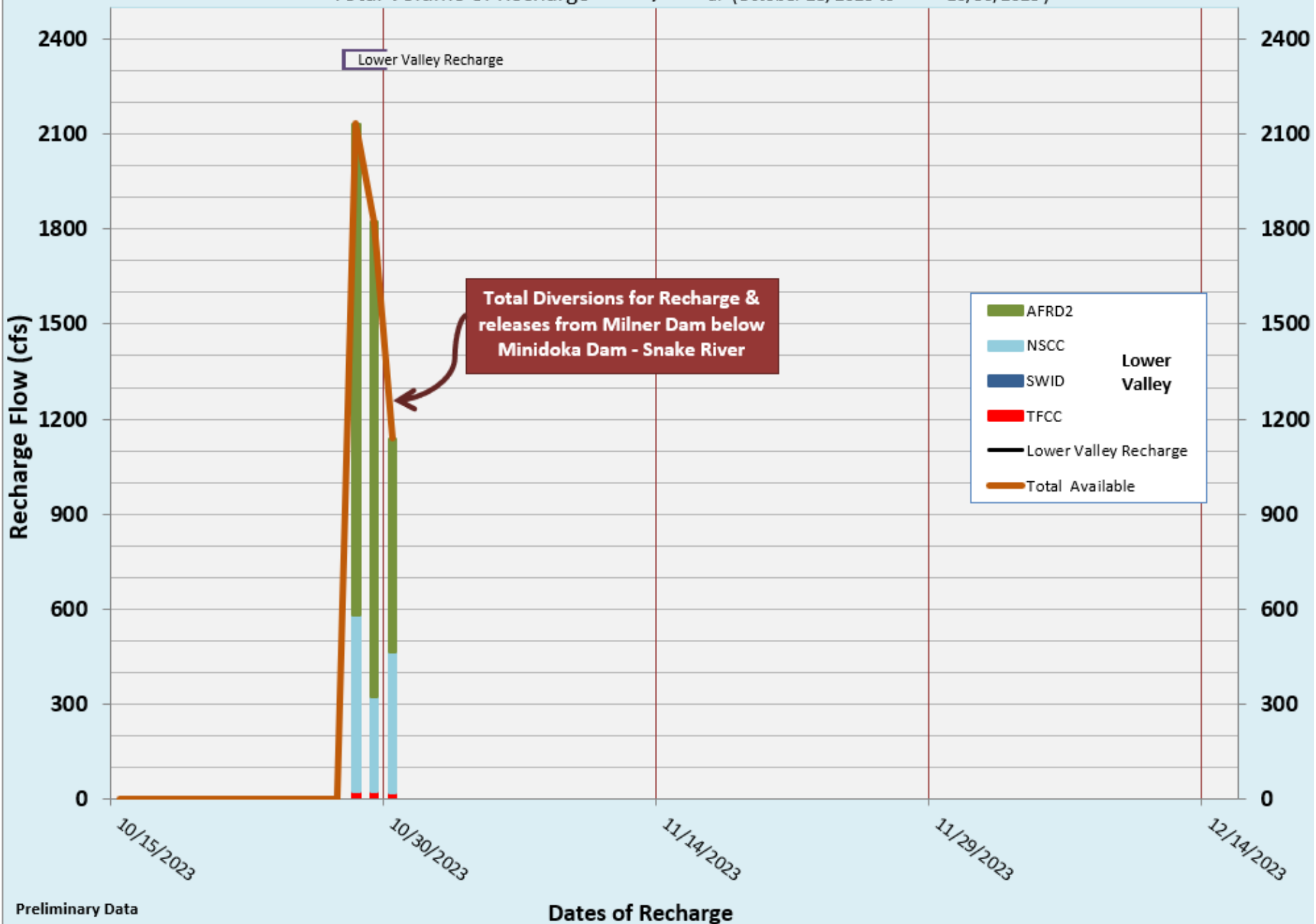
- AF

Twin Falls



IWRB Natural Flow Recharge - 2023/2024 Season

Total Volume of Recharge = **10,105** af (October 28, 2023 to 10/30/2023)



Total Storage Water Recharged

76,522 af

Updated as of
10/30/2023

Oct 6 - Ongoing

Upper Valley
Diversion Rate
Median: 463 cfs
Max: 932 cfs

FMID
2,203 AF

Rexburg

PID
7,558 AF

Idaho Falls

NSID
517 AF

Blackfoot

ASCC
16,856 AF

Pocatello

Oct 13 to Oct. 28

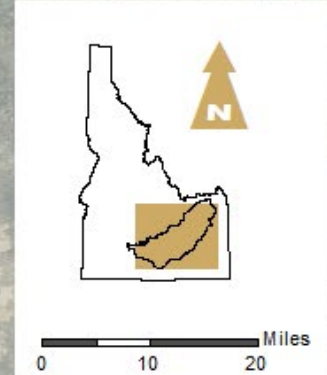
Lower Valley
Diversion Rate
Median: 1576 cfs
Max: 2188 cfs

AFRD2
34,542 AF

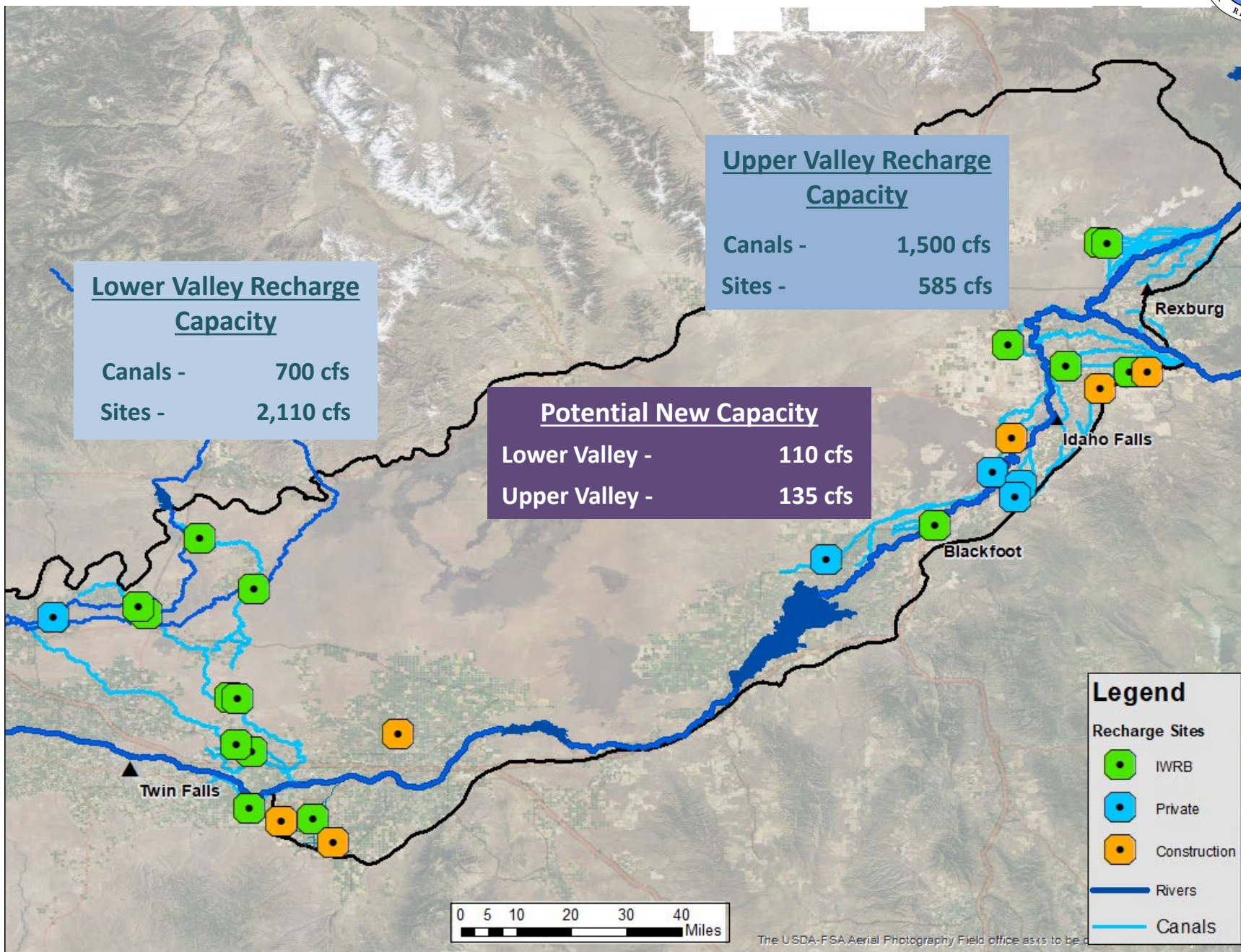
NSCC
14,578 AF

Twin Falls

TFCC
267 AF



ESPA IWRB Recharge Sites



Questions

