

UNITED WATER IDAHO  
CONSERVATION

The cover features a dark, textured image of a garden or lawn on the left side. The title 'UNITED WATER IDAHO CONSERVATION' is centered in a bold, sans-serif font. There is a small circular logo or seal at the bottom right of the cover.

---

---

---

---

---

---


---

---

**UNITED WATER IDAHO CONSERVATION**

Our conservation programs are voluntary. We do not have the authority to dictate water use such as when to water or issue citations.

- Summer Tariff -25% Increase
- Meter All Customers
- Free Devices
- Demonstration Gardens
- Education Programs
- Summer Conservation Campaign
- Plumbing Codes



A black and white photograph of a landscape, possibly a garden or park, with trees and a path.

---

---

---

---

---

---


---

---

**UNITED WATER IDAHO CONSERVATION**

**○ How much water do we need**

- Turf- around 2.5" annually for bluegrass. Other more water conserving varieties can get as low as 1.3" annually.
- Drought Tolerant Plants- less than 1" annually.



A black and white photograph of a landscape with trees and a path, similar to the one in the previous slide.

---

---

---

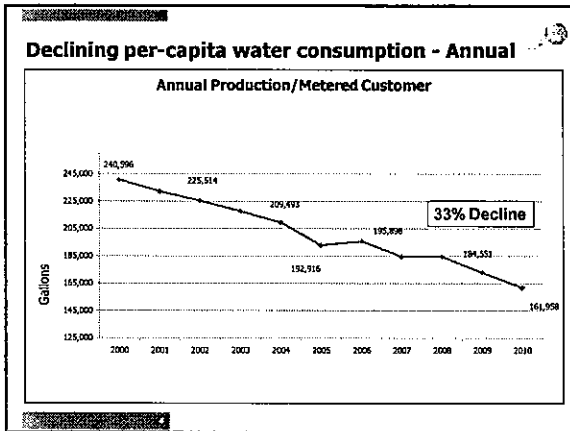
---

---

---

---

---



---

---

---

---

---

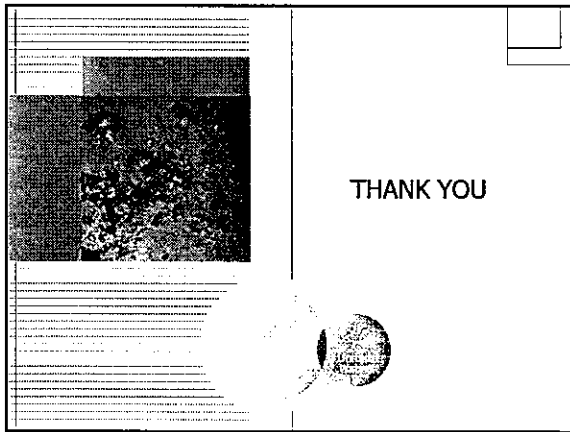
---

---

---

---

---



---

---

---

---

---

---

---

---

---

---