



# Hydrologic Modeling of CREP Areas

Presented by: Neeley Miller

Date: 09/01/2009

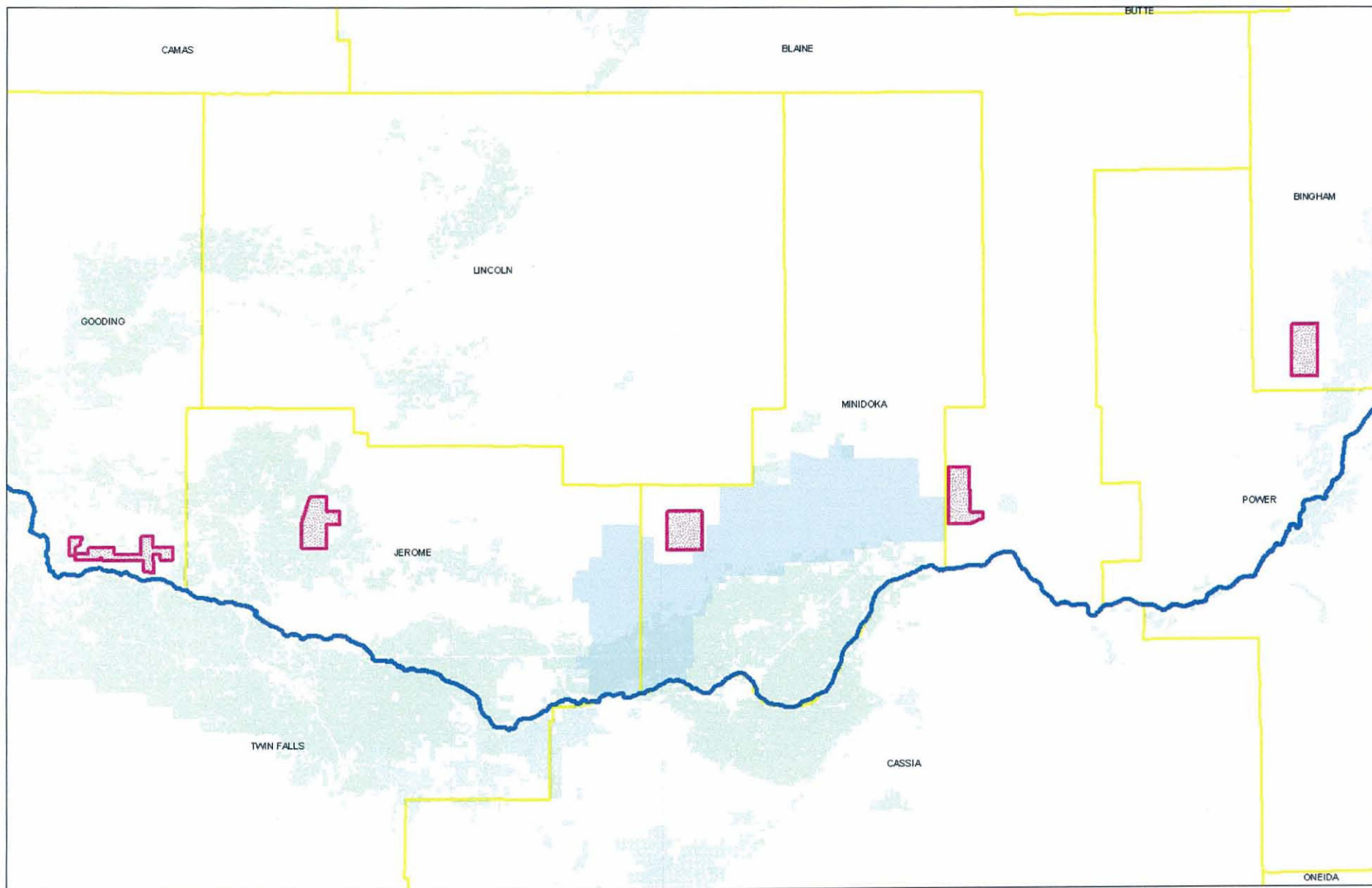
---



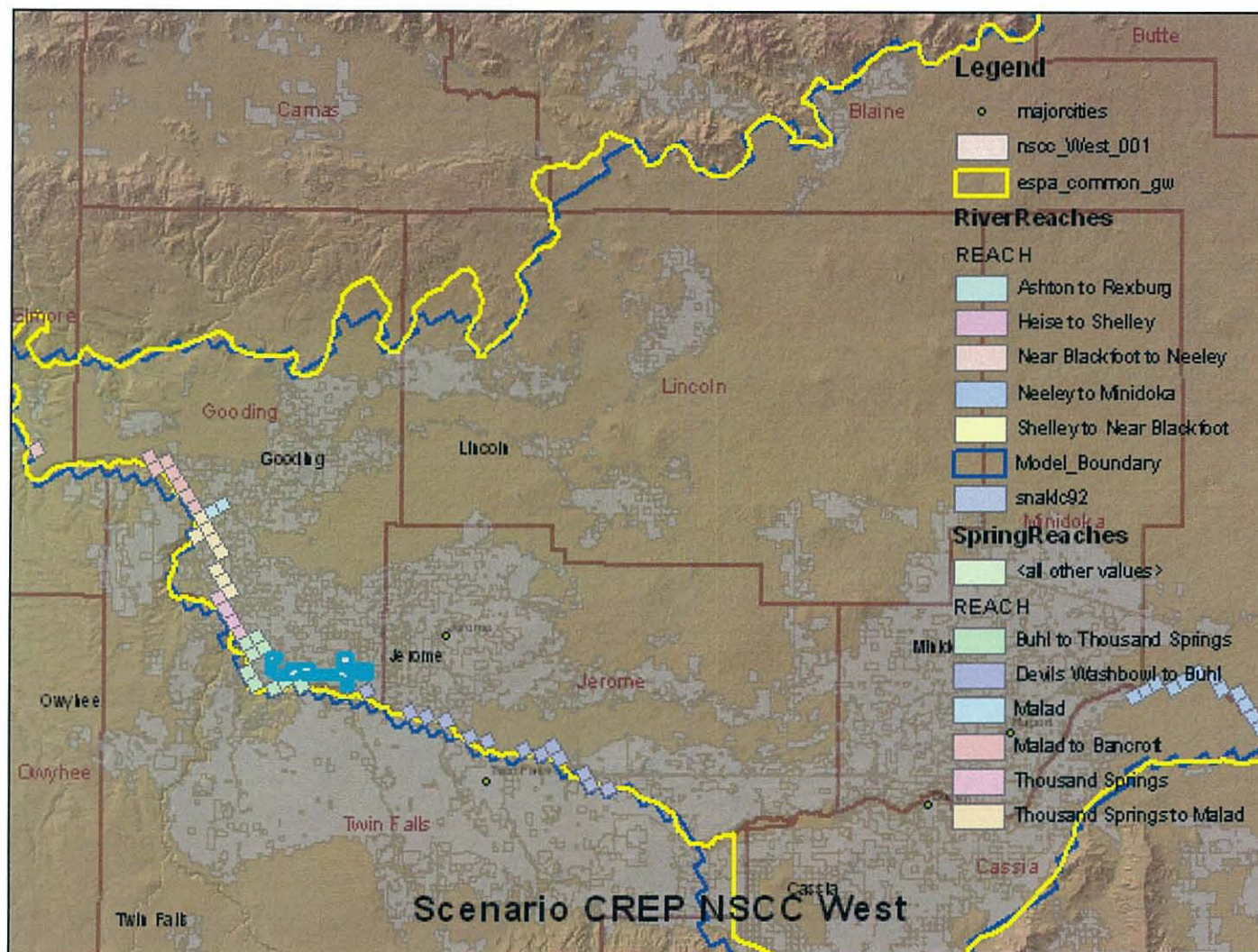


# IDAHO

Water Resource Board

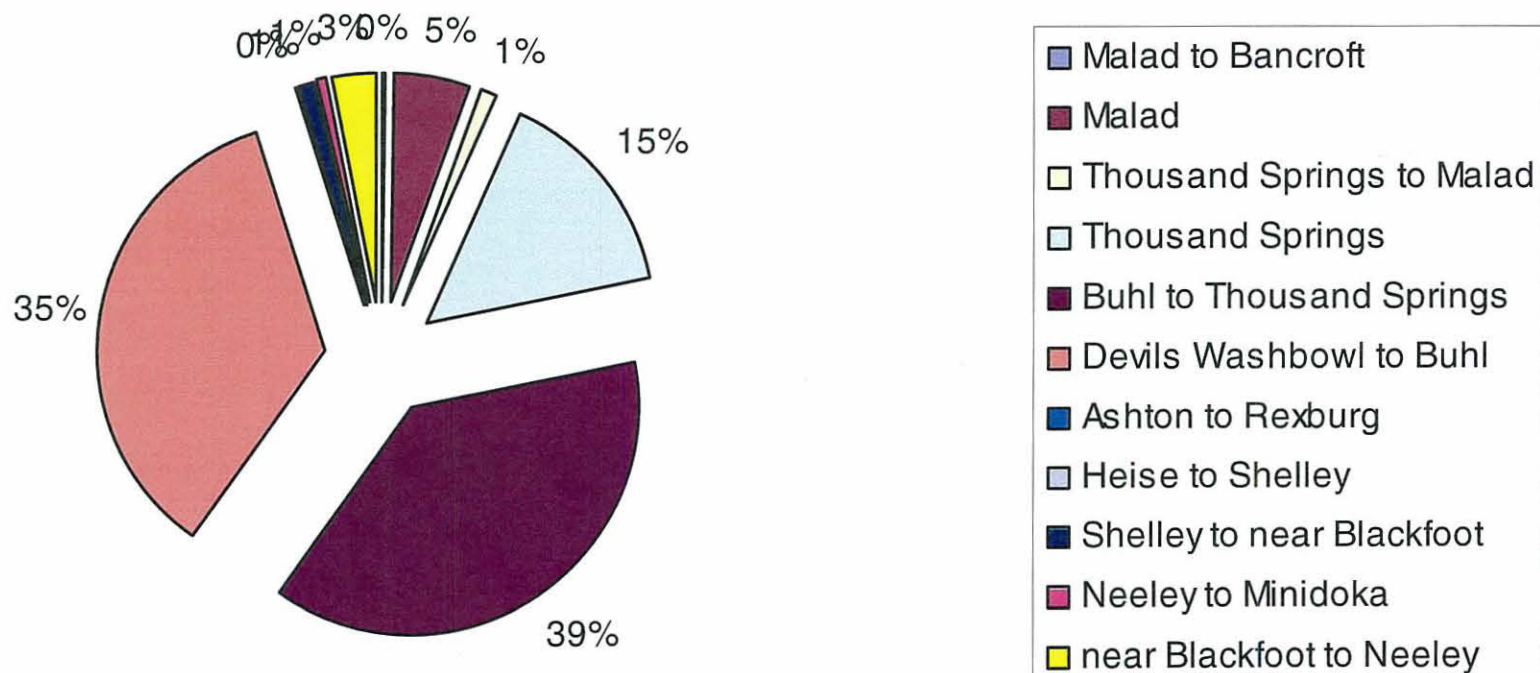






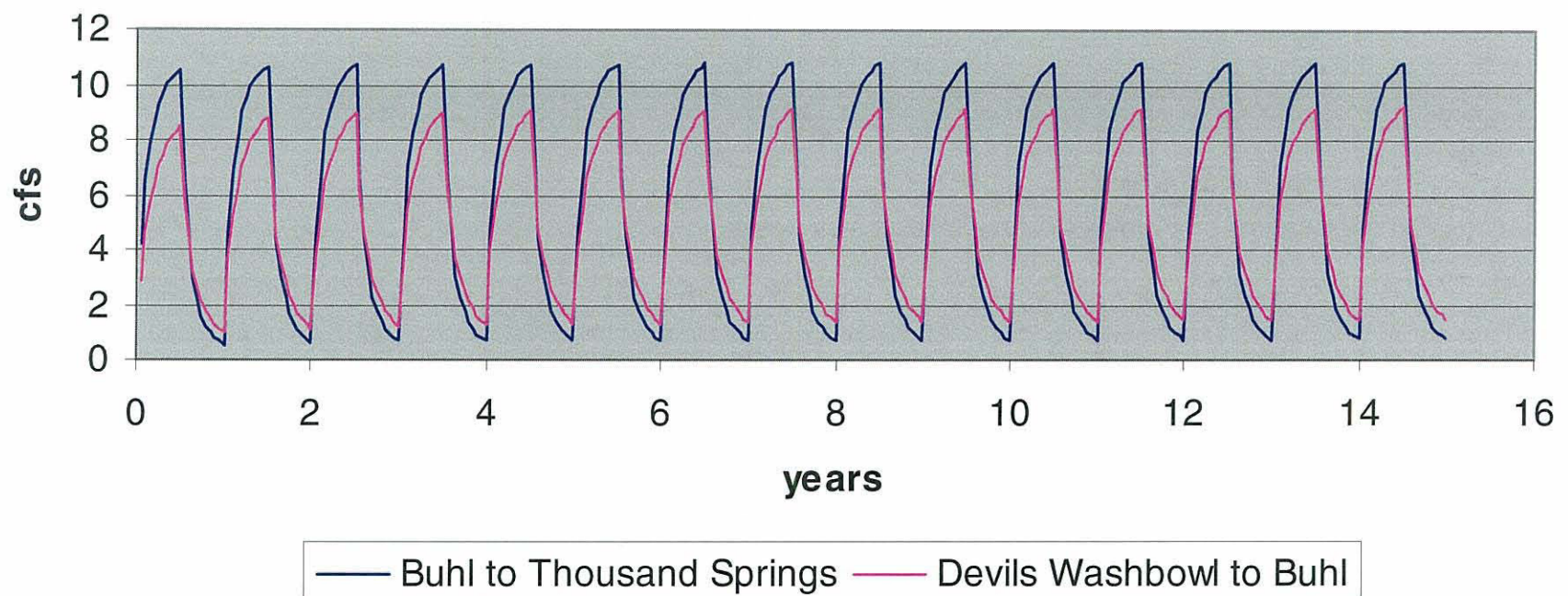


## Percent of Total gain by reach for CREP, NSCC West

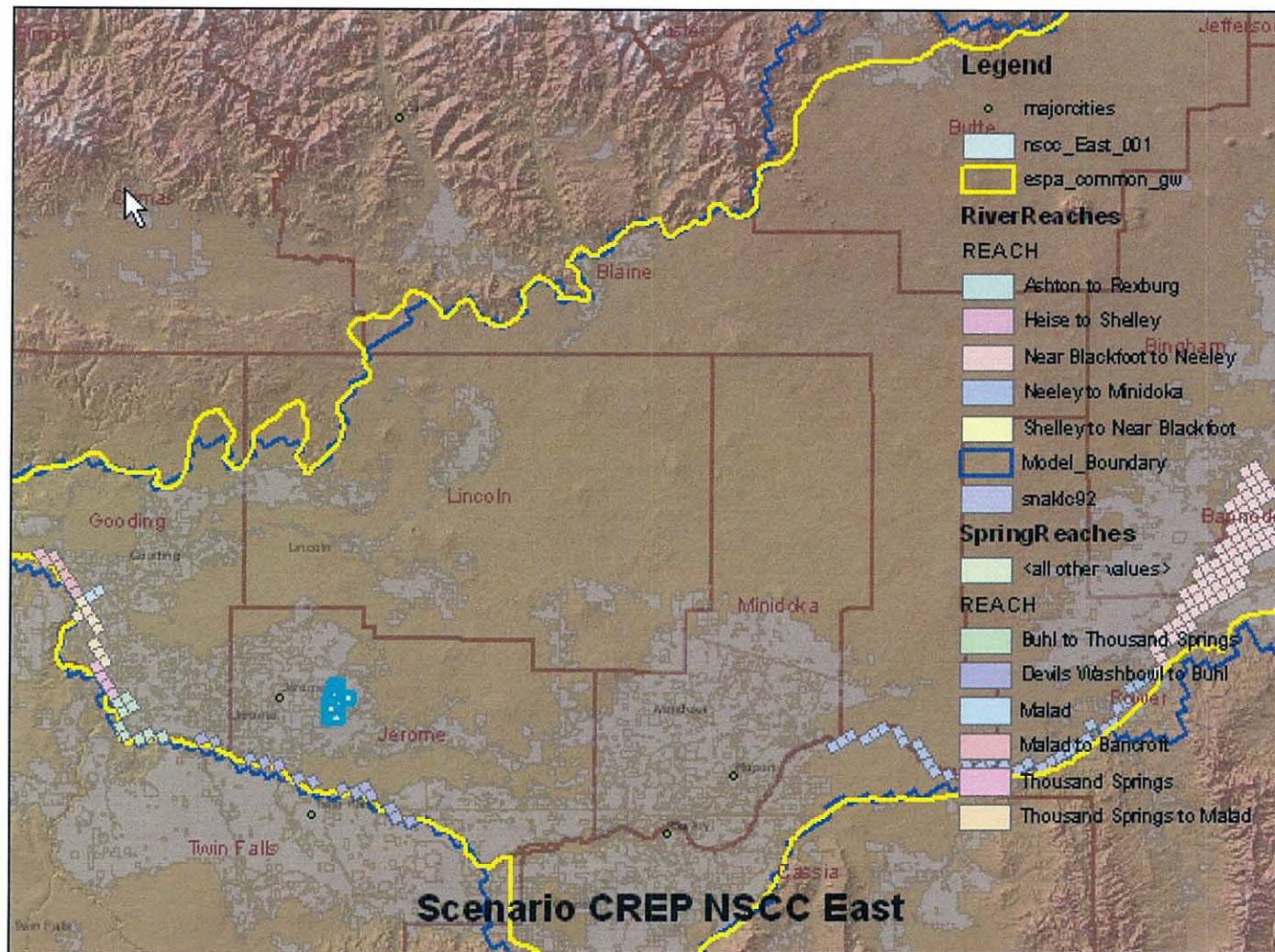




## CREP NSCC West

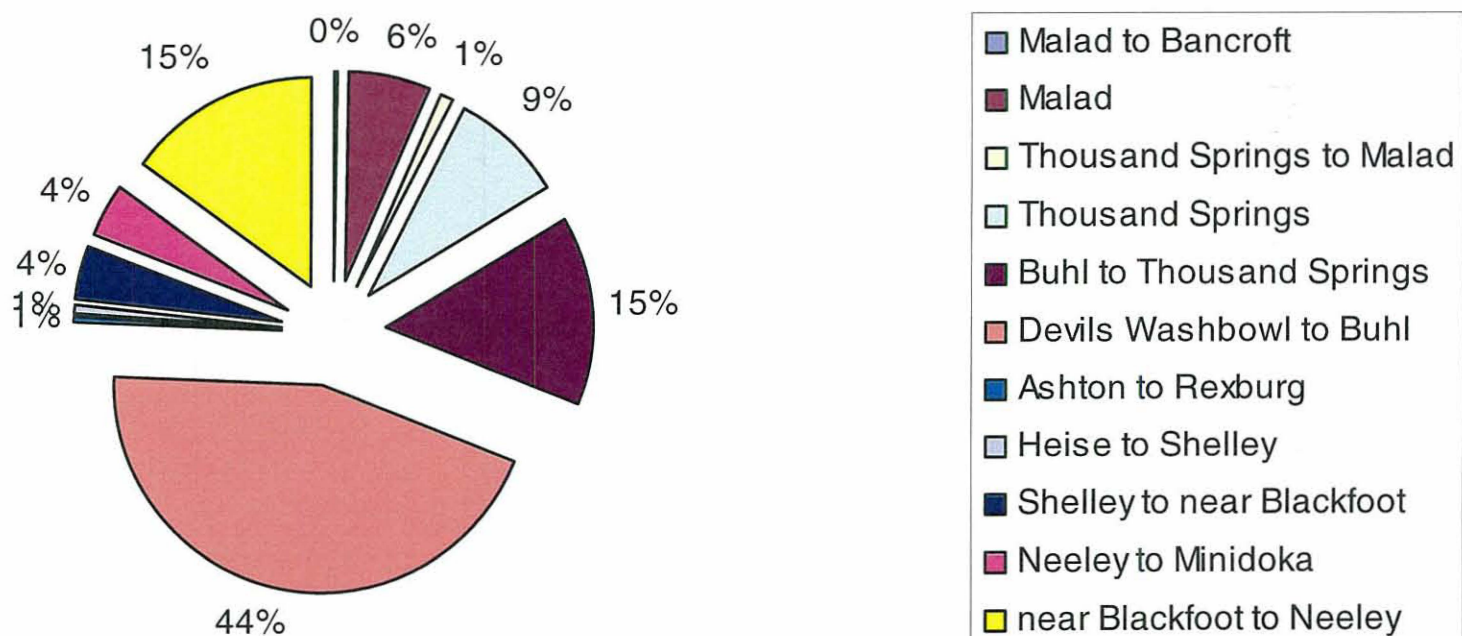






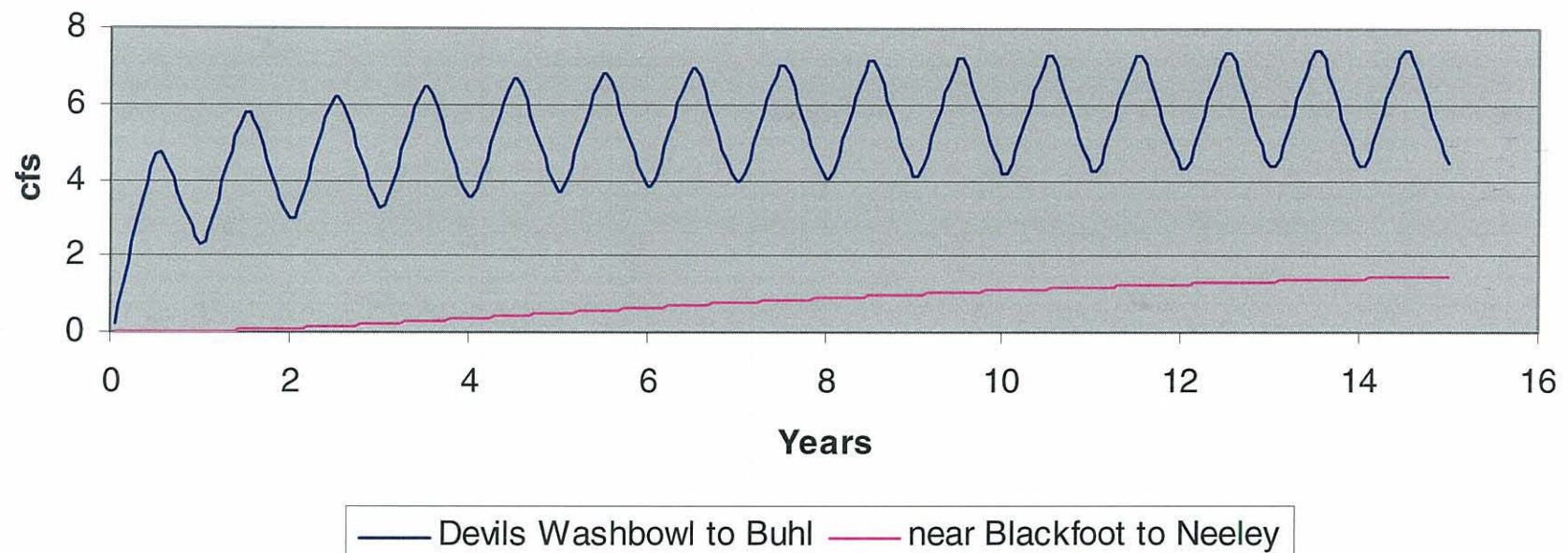


Percent of Total gain by reach for CREP NSCC East

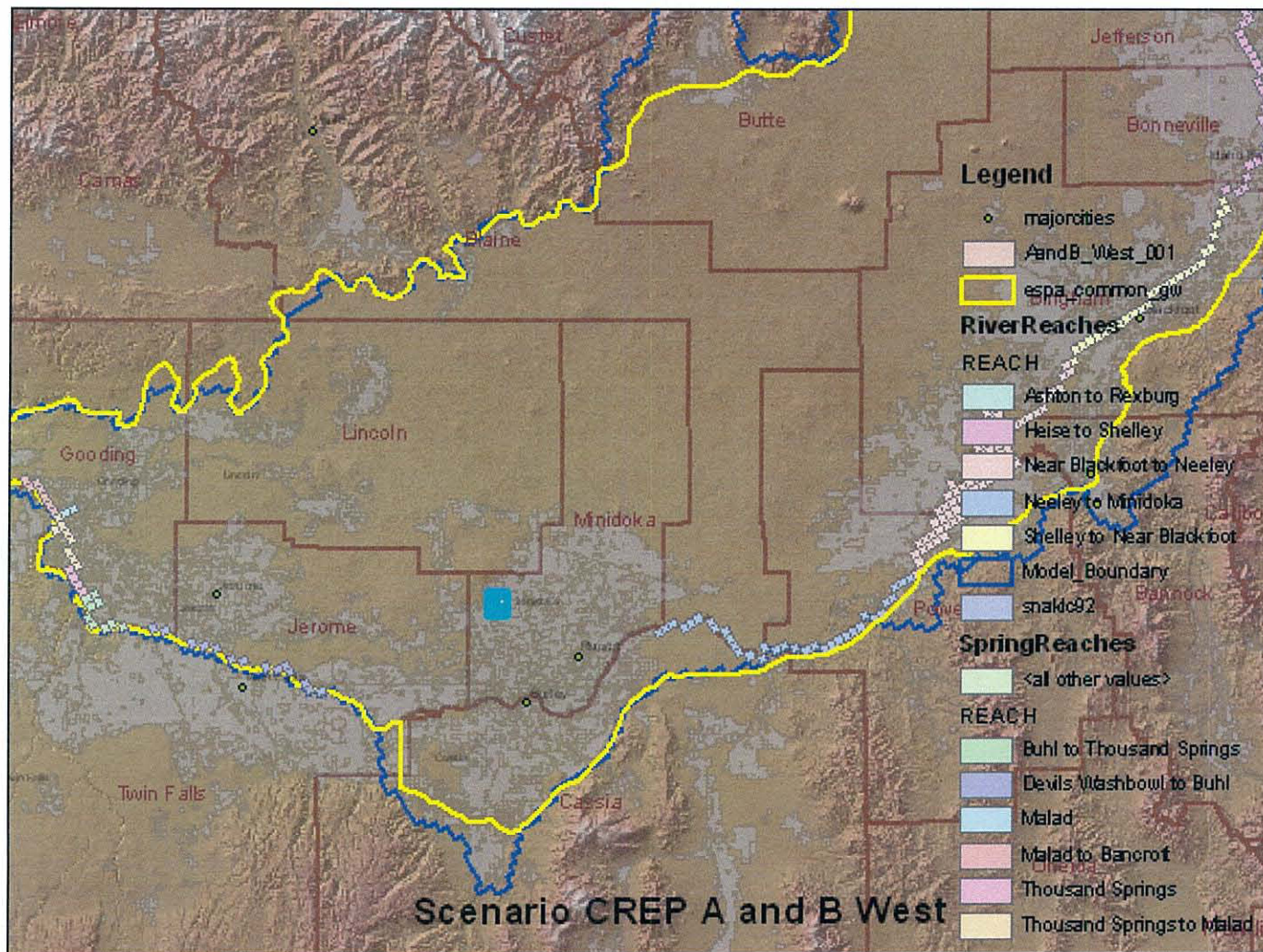




## NSCC East

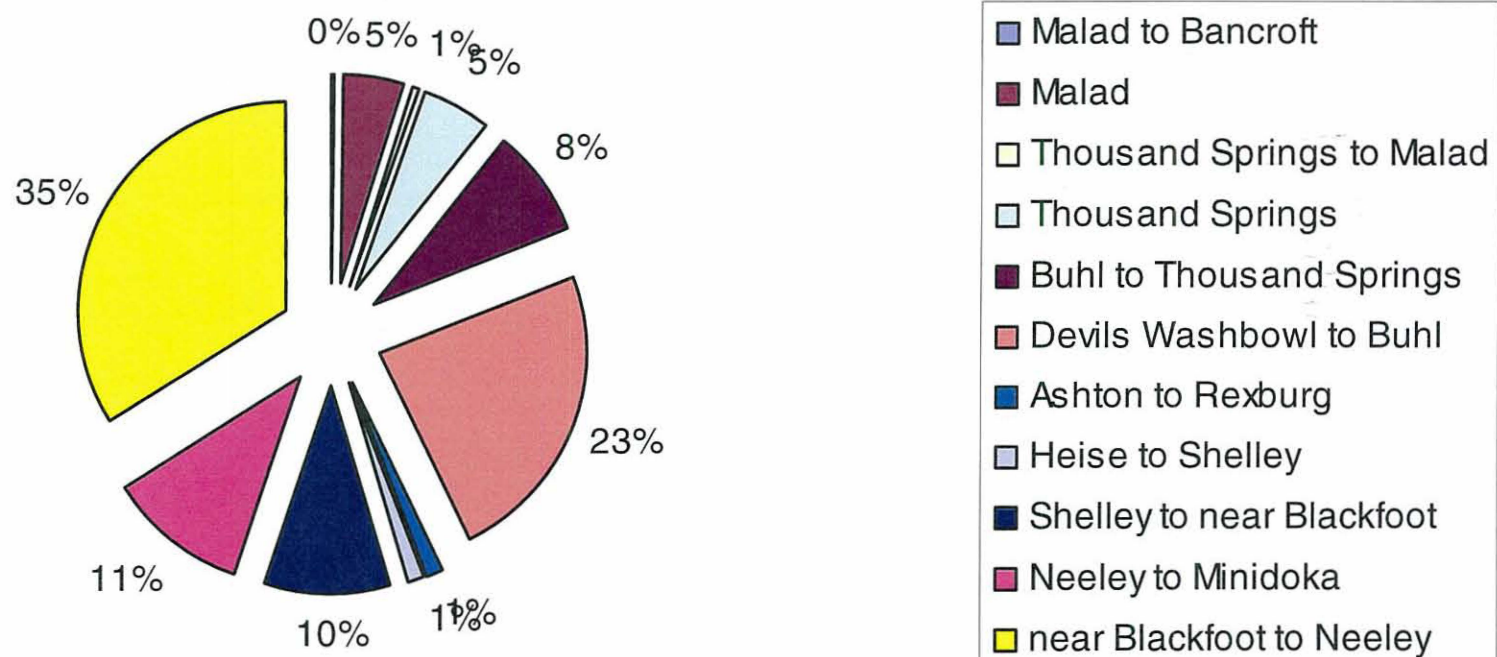






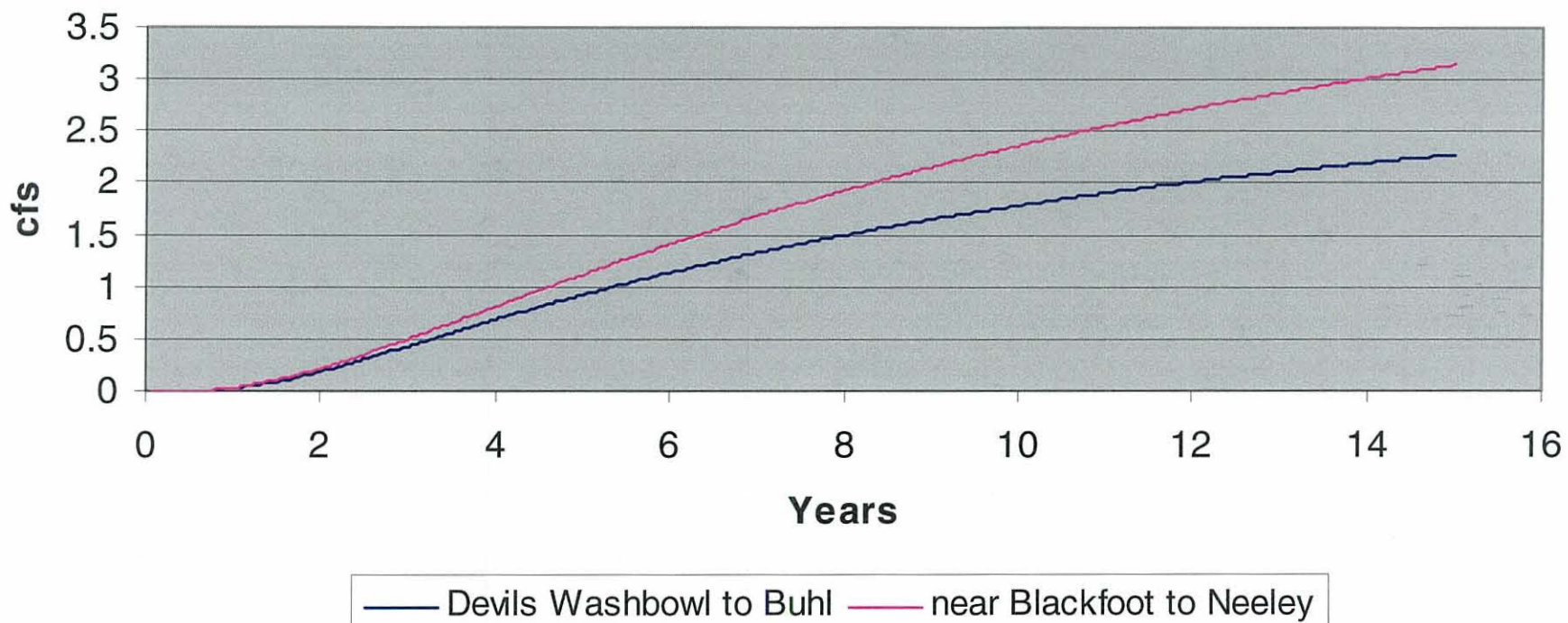


Percent of Total gain by reach for CREP A and B West

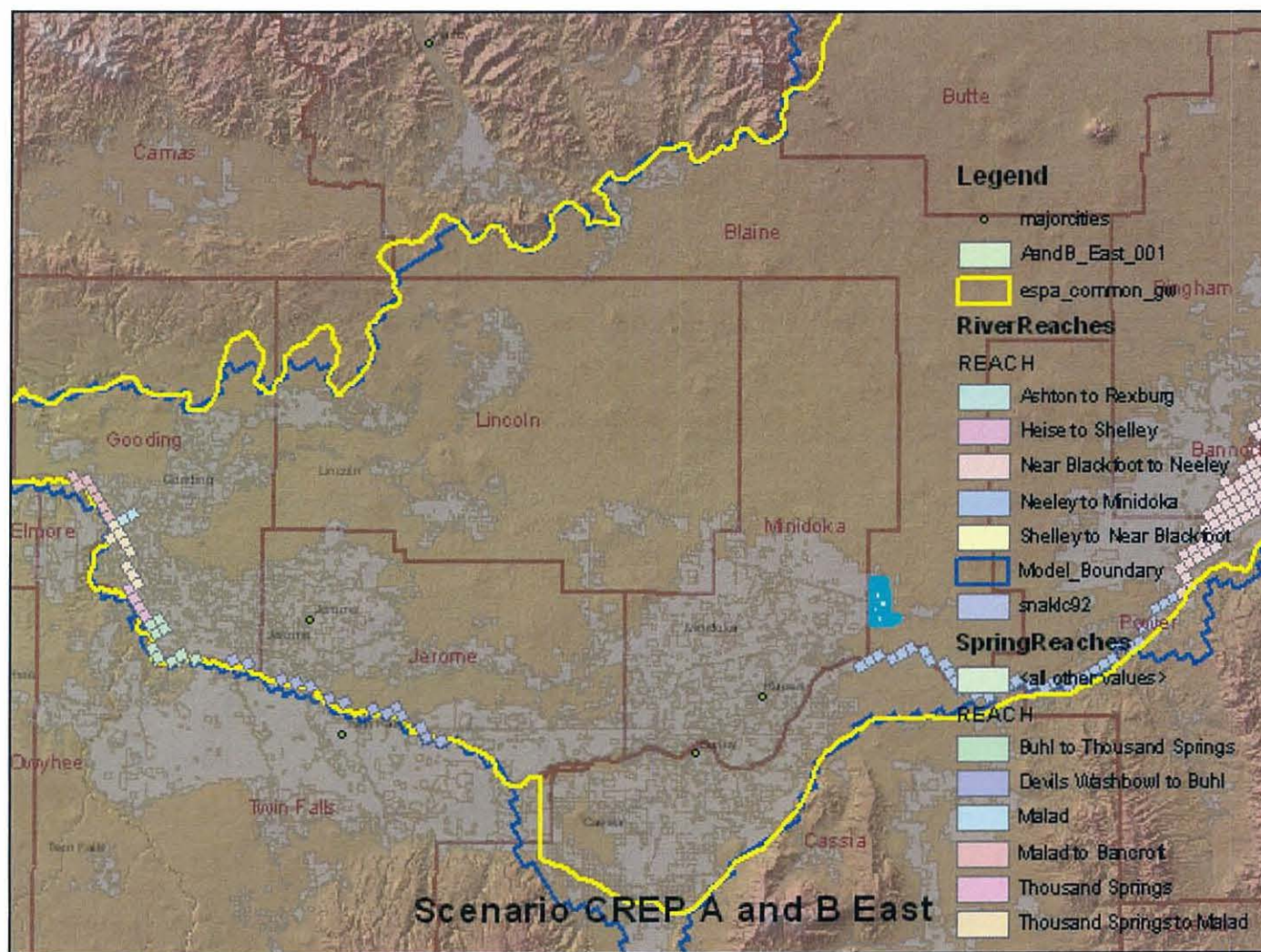




## A and B West

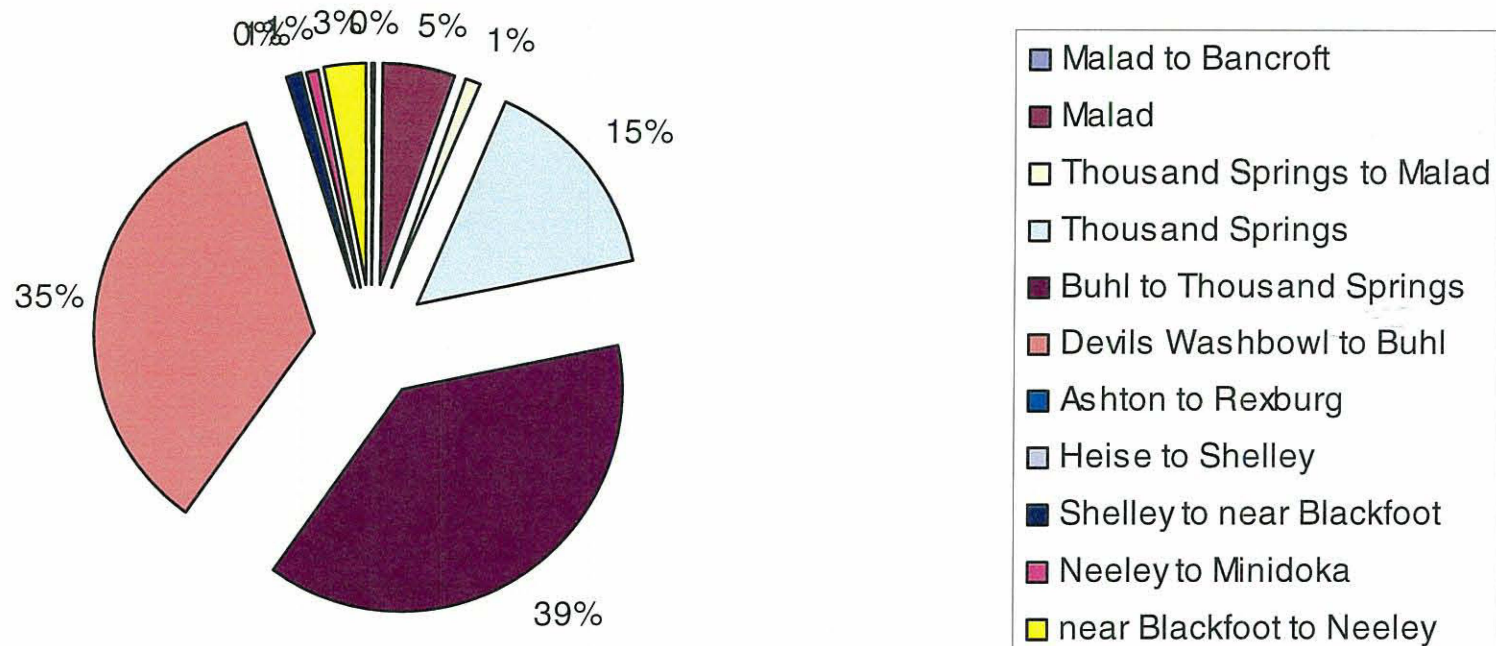




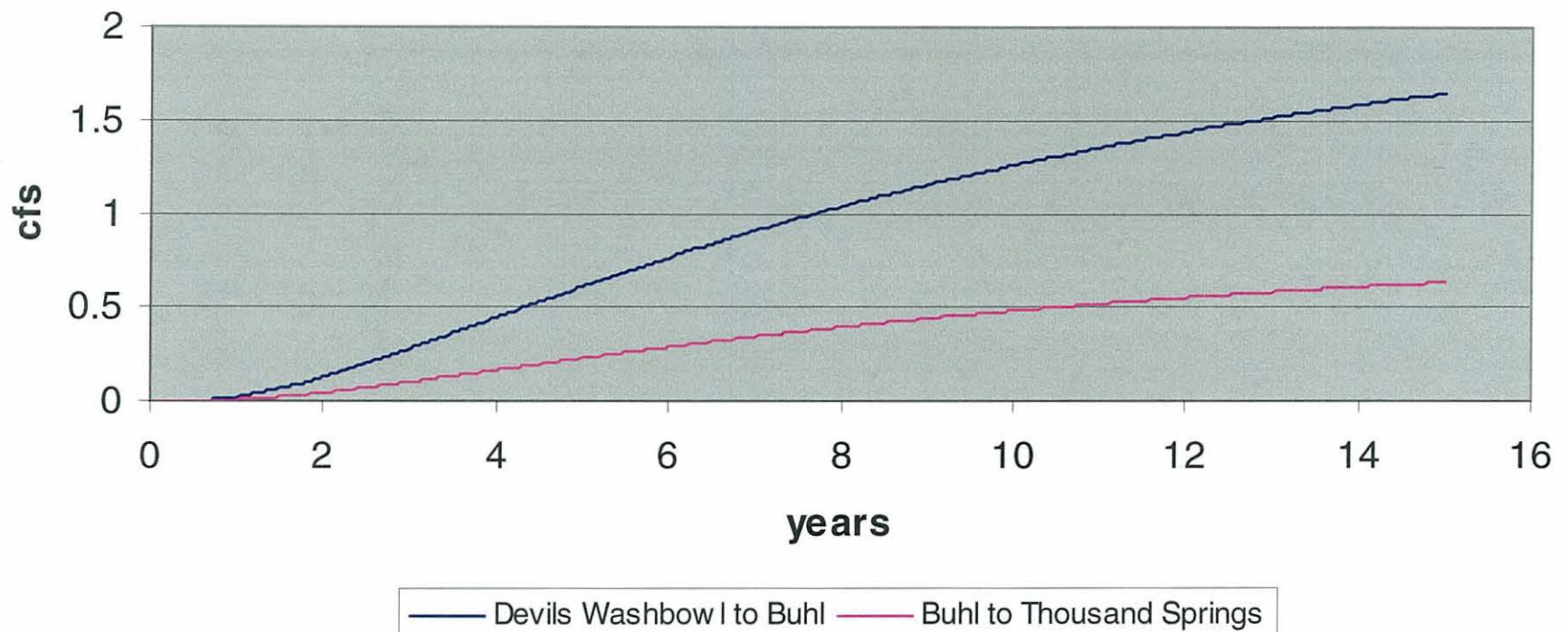




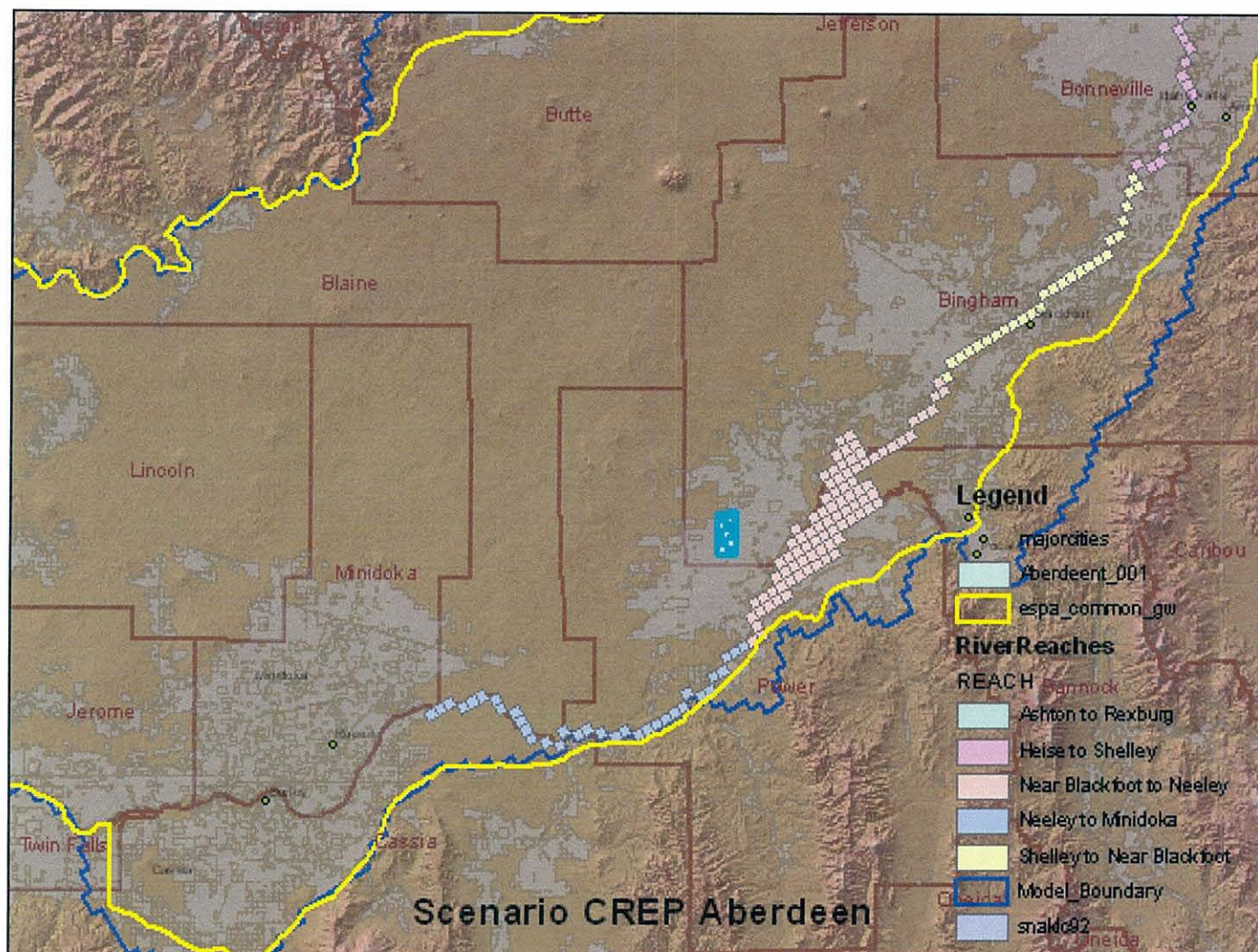
Percent of Total gain by reach for CREP A and B East



### A and B East

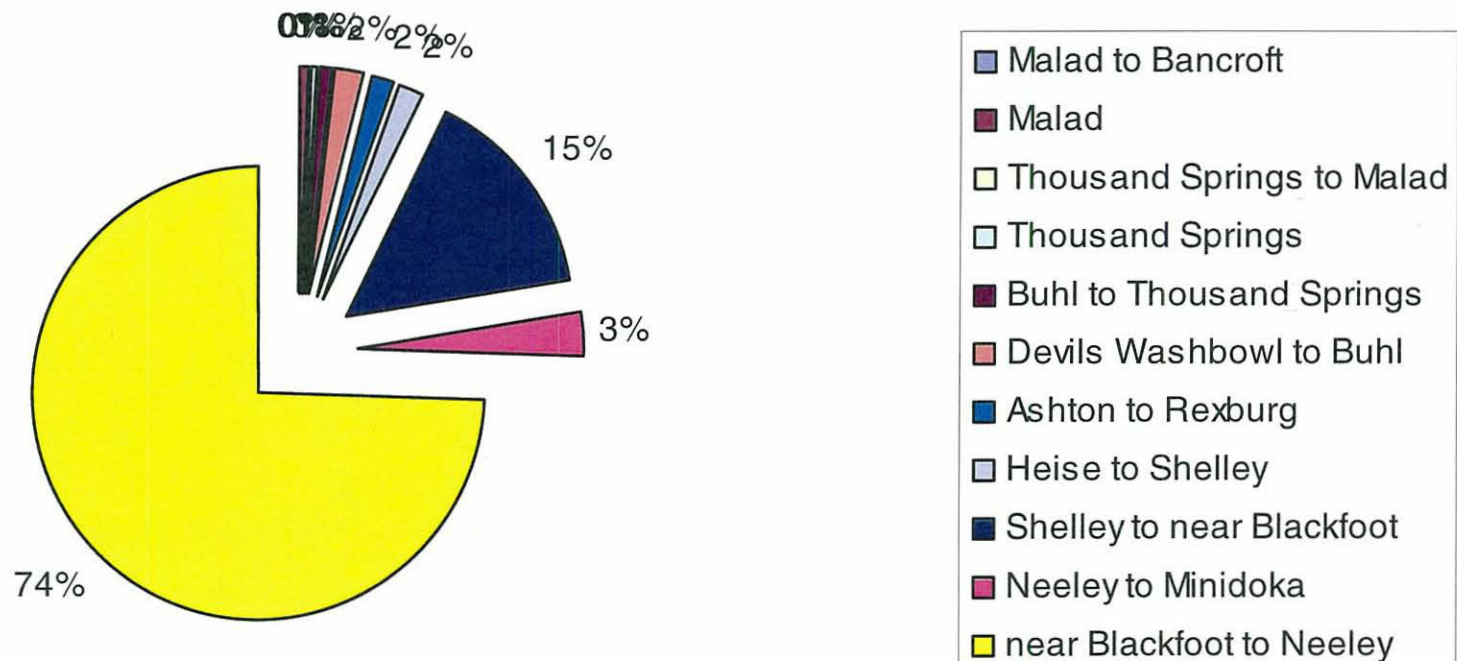






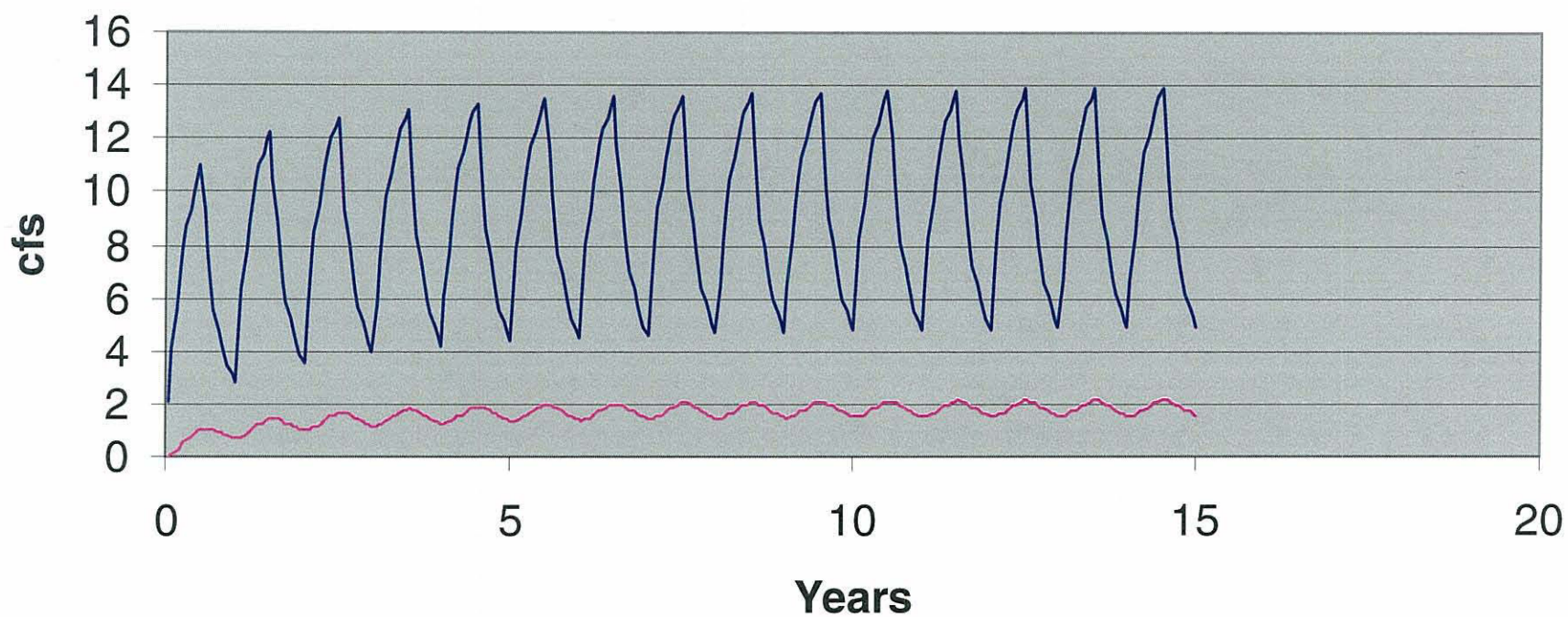


Percent of Total gain by reach for CREP Aberdeen



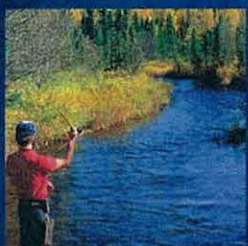
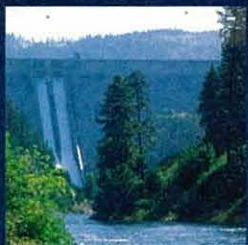


## Aberdeen



— near Blackfoot to Neeley — Shelley to near Blackfoot





Questions/comments?