

ESPA CAMP

Draft Administrative Mechanism for Implementing Ground to Surface Water Conversions

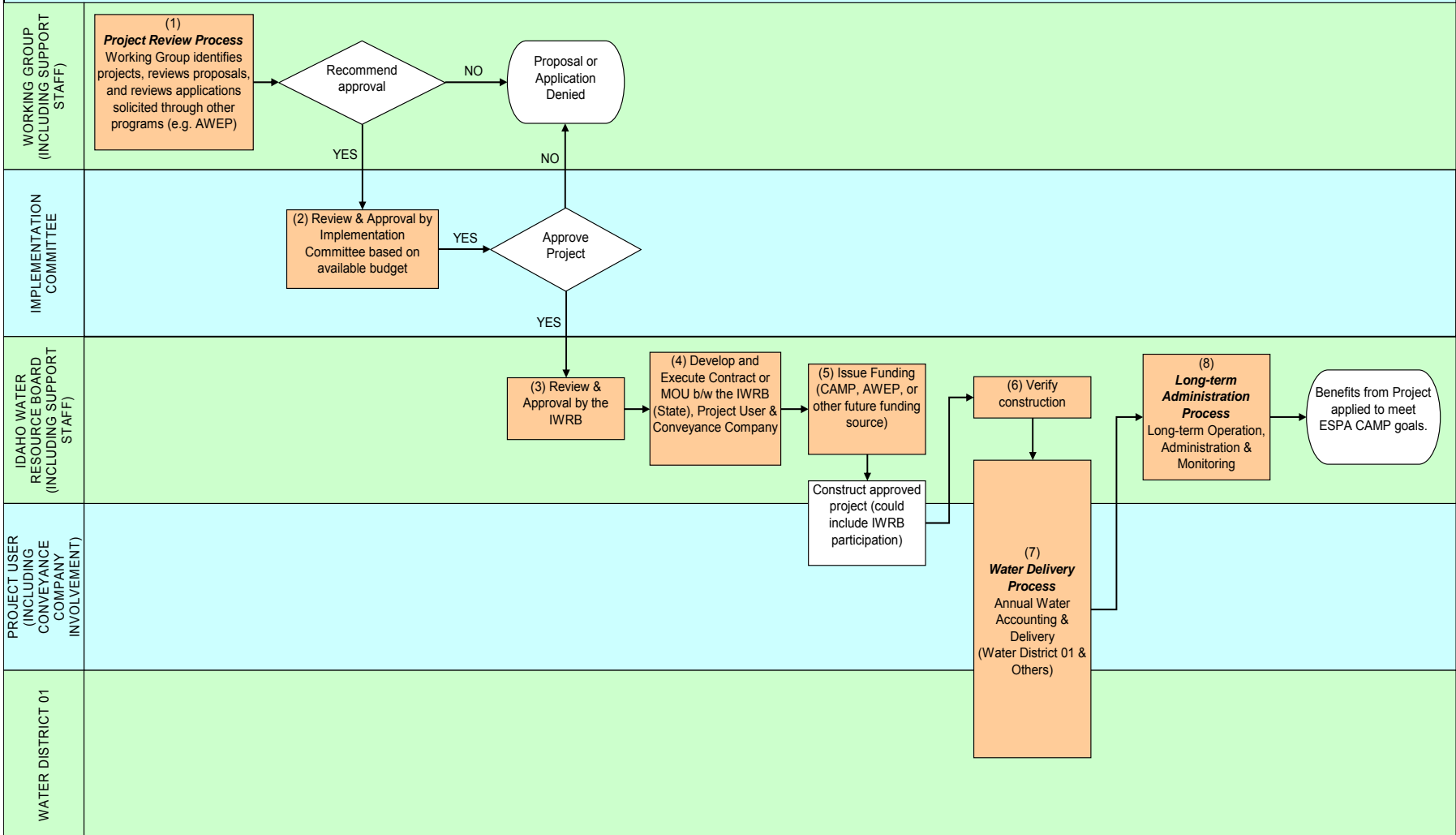
September 1, 2009

Conversions Working Group Meeting

Purpose of Administrative Process

- Get conversion projects on the ground to achieve ESPA CAMP goals
- Accommodate long-term operation and maintenance of projects

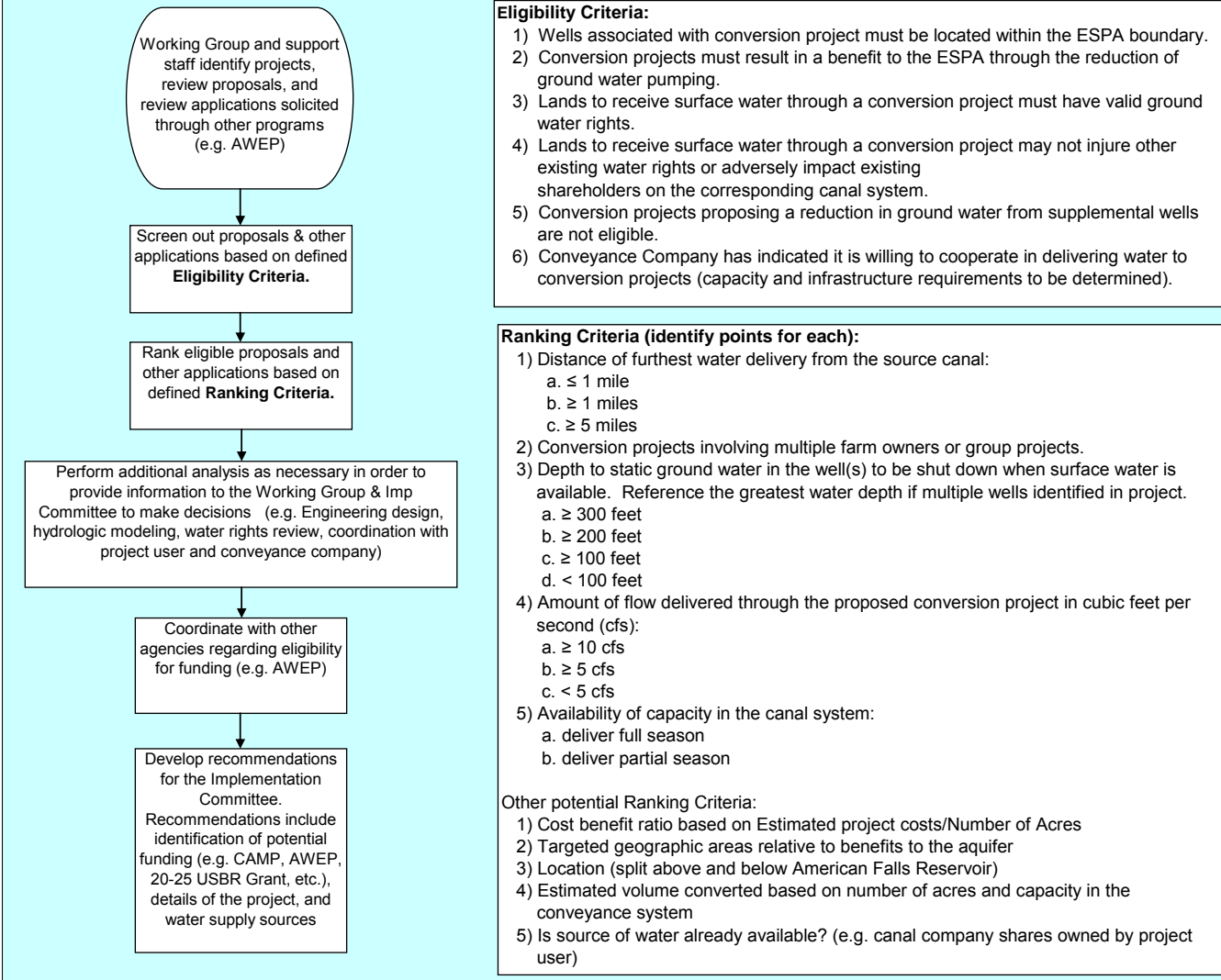
Administration of Selection, Construction and Long-Term Management of Conversion Projects



Key Process Components

- 1) Project Review Process (Working Group & Support Staff)
- 2) Approval of projects by Implementation Committee
- 3) Approval by the IWRB
- 4) Execute contract between IWRB, Project User & Conveyance Company
- 5) Issue funding for construction of project
- 6) Project construction & verification
- 7) Water Delivery Process
- 8) Long-term operation, administration & monitoring

(1) Project Review Process



- Eligibility Criteria:**
- 1) Wells associated with conversion project must be located within the ESPA boundary.
 - 2) Conversion projects must result in a benefit to the ESPA through the reduction of ground water pumping.
 - 3) Lands to receive surface water through a conversion project must have valid ground water rights.
 - 4) Lands to receive surface water through a conversion project may not injure other existing water rights or adversely impact existing shareholders on the corresponding canal system.
 - 5) Conversion projects proposing a reduction in ground water from supplemental wells are not eligible.
 - 6) Conveyance Company has indicated it is willing to cooperate in delivering water to conversion projects (capacity and infrastructure requirements to be determined).

- Ranking Criteria (identify points for each):**
- 1) Distance of furthest water delivery from the source canal:
 - a. ≤ 1 mile
 - b. ≥ 1 miles
 - c. ≥ 5 miles
 - 2) Conversion projects involving multiple farm owners or group projects.
 - 3) Depth to static ground water in the well(s) to be shut down when surface water is available. Reference the greatest water depth if multiple wells identified in project.
 - a. ≥ 300 feet
 - b. ≥ 200 feet
 - c. ≥ 100 feet
 - d. < 100 feet
 - 4) Amount of flow delivered through the proposed conversion project in cubic feet per second (cfs):
 - a. ≥ 10 cfs
 - b. ≥ 5 cfs
 - c. < 5 cfs
 - 5) Availability of capacity in the canal system:
 - a. deliver full season
 - b. deliver partial season
- Other potential Ranking Criteria:**
- 1) Cost benefit ratio based on Estimated project costs/Number of Acres
 - 2) Targeted geographic areas relative to benefits to the aquifer
 - 3) Location (split above and below American Falls Reservoir)
 - 4) Estimated volume converted based on number of acres and capacity in the conveyance system
 - 5) Is source of water already available? (e.g. canal company shares owned by project user)

(4) Contract between IWRB, Project User & Conveyance Company

Commitments & Obligations to be Addressed

1. Project user agrees to use surface water when available through CAMP.
2. Conveyance Company agrees to deliver surface water when available through CAMP subject to canal manager's discretion.
3. Through the ESPA CAMP, IWRB is committed to take responsibility for obtaining water supplies for conversion projects.
4. Agreement is long-term.
5. Maintenance obligations of all parties defined.
6. Operation commitments for all parties defined.
7. Ownership of project infrastructure defined (e.g. pump station).
8. Other commitments?

(7) Water Delivery Process

