

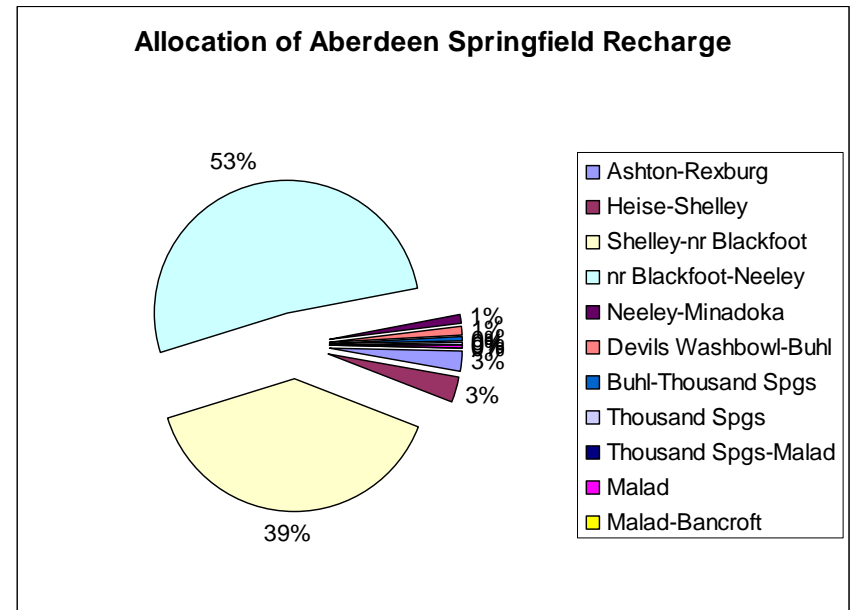
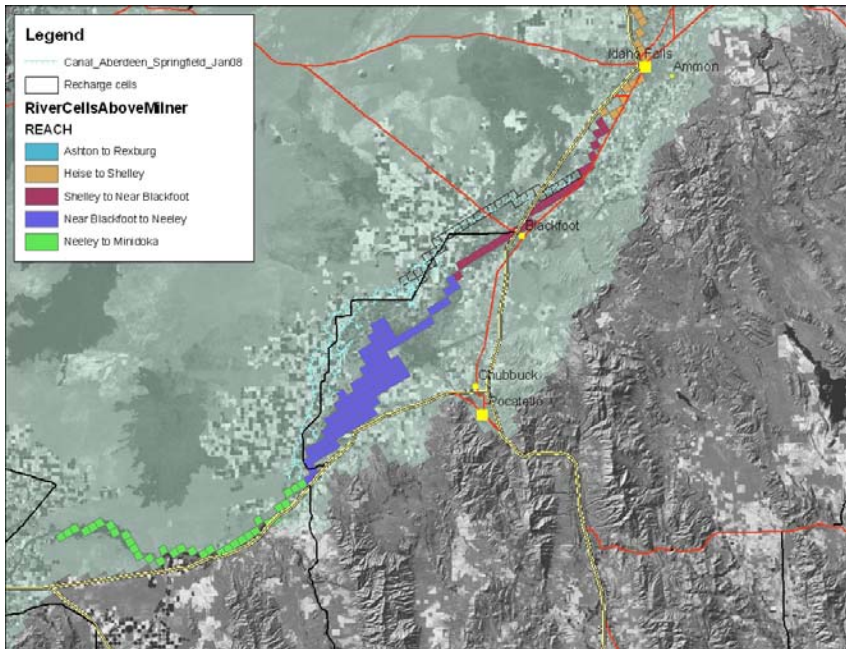


# Steady State and Transient Impacts to the Snake River From Recharge in Selected Canals

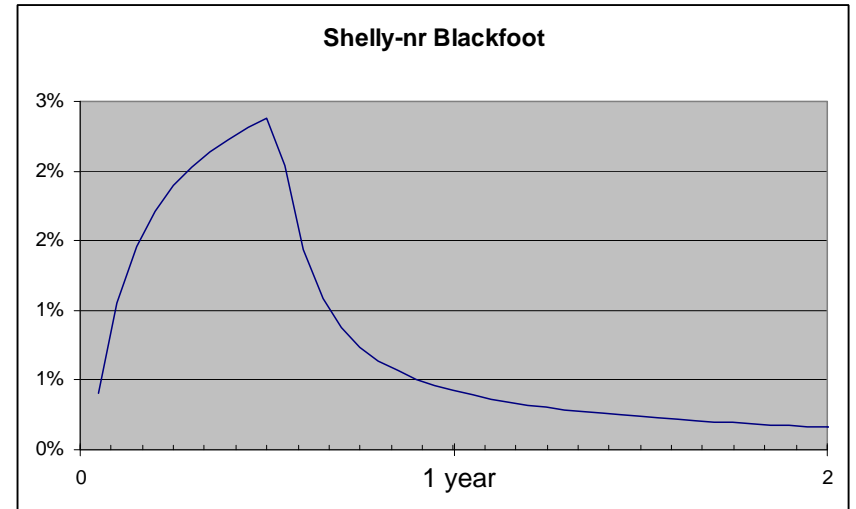
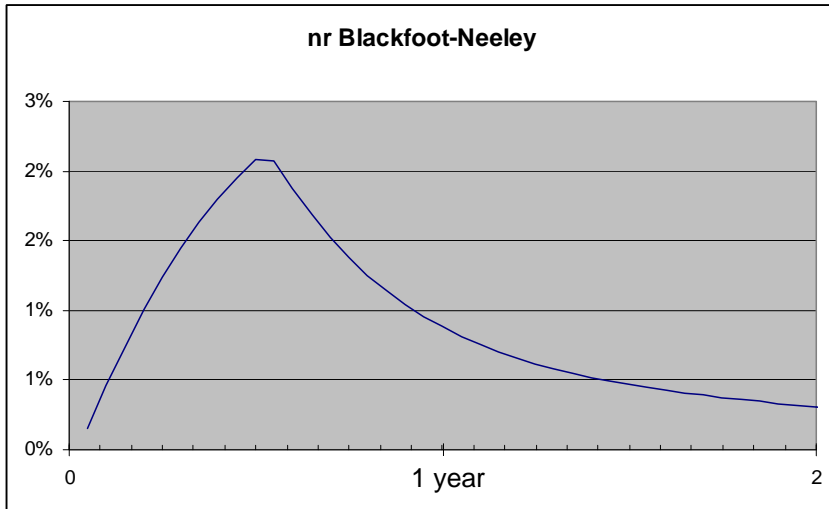
Allan Wylie, IDWR, July 2009



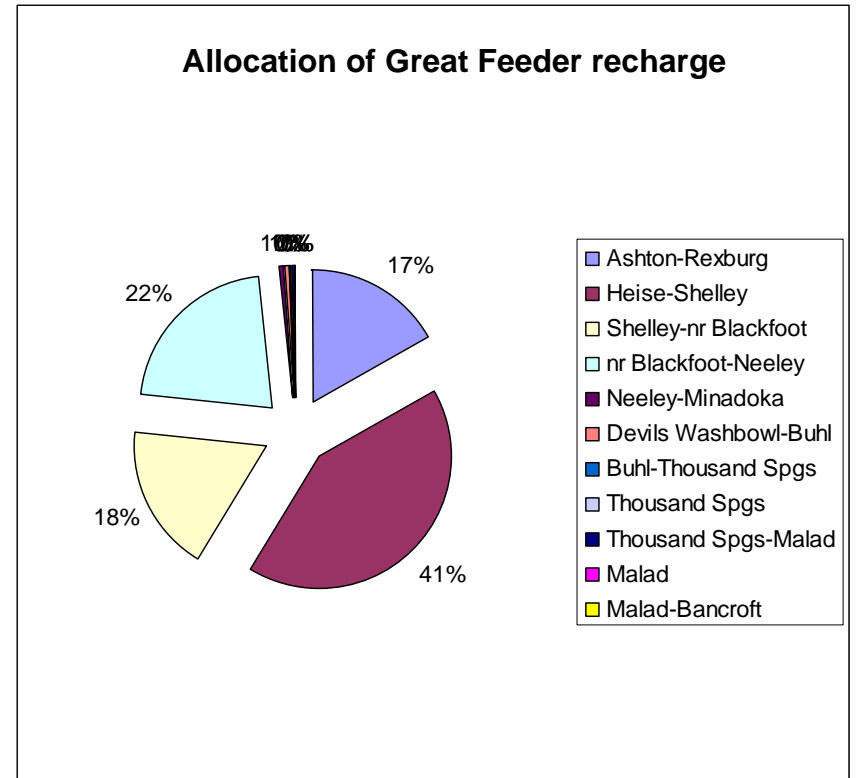
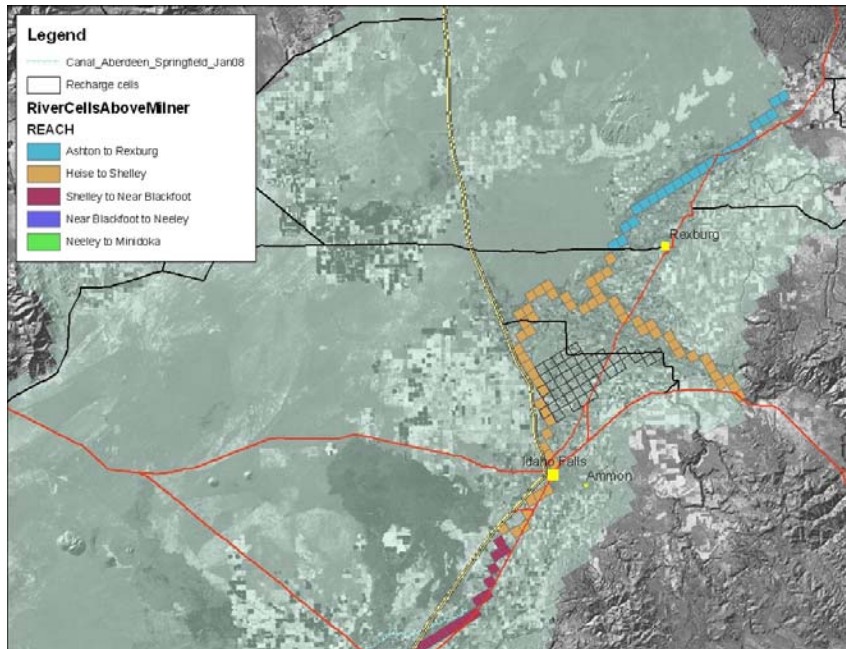
# Aberdeen Springfield



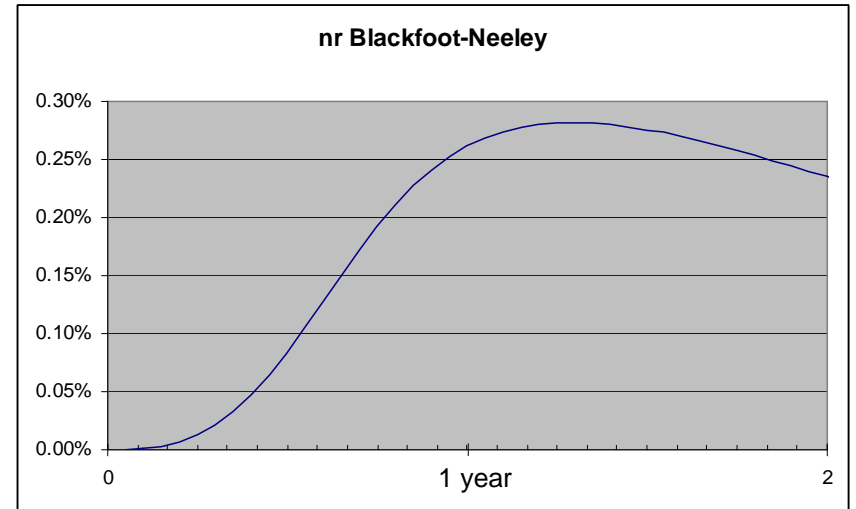
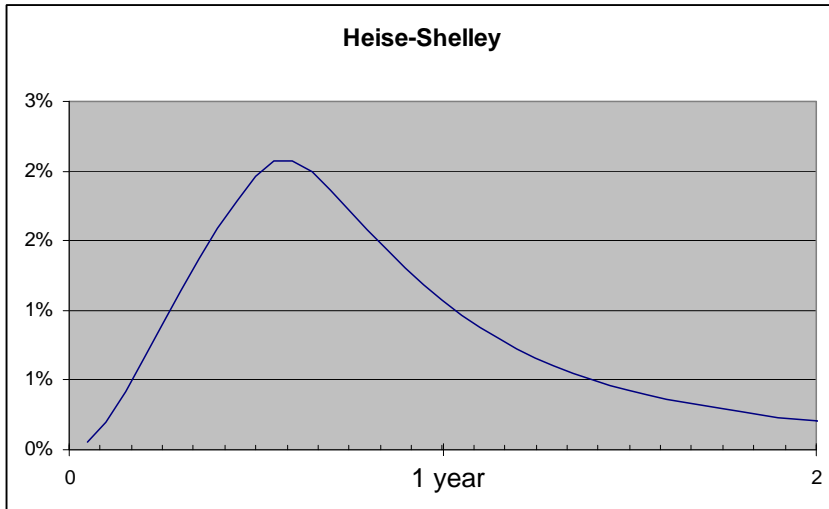
# Aberdeen Springfield



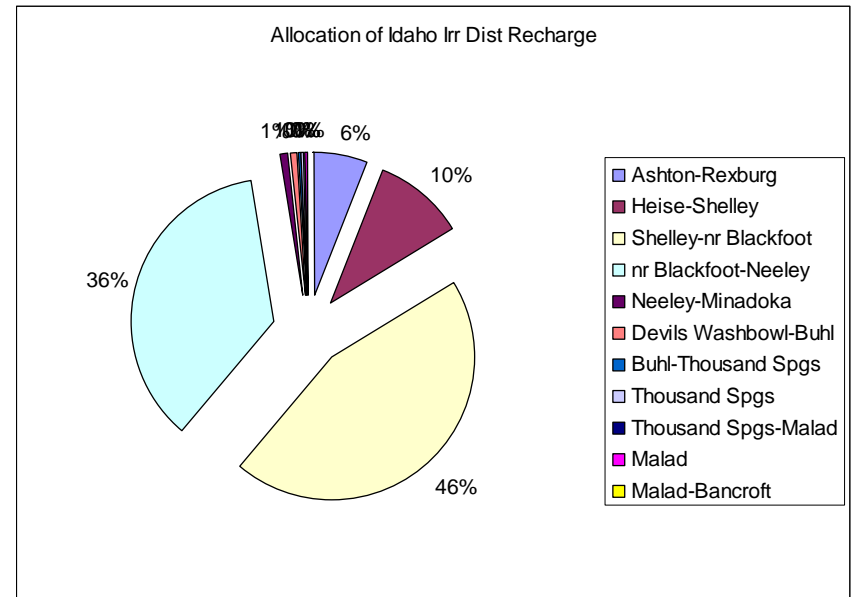
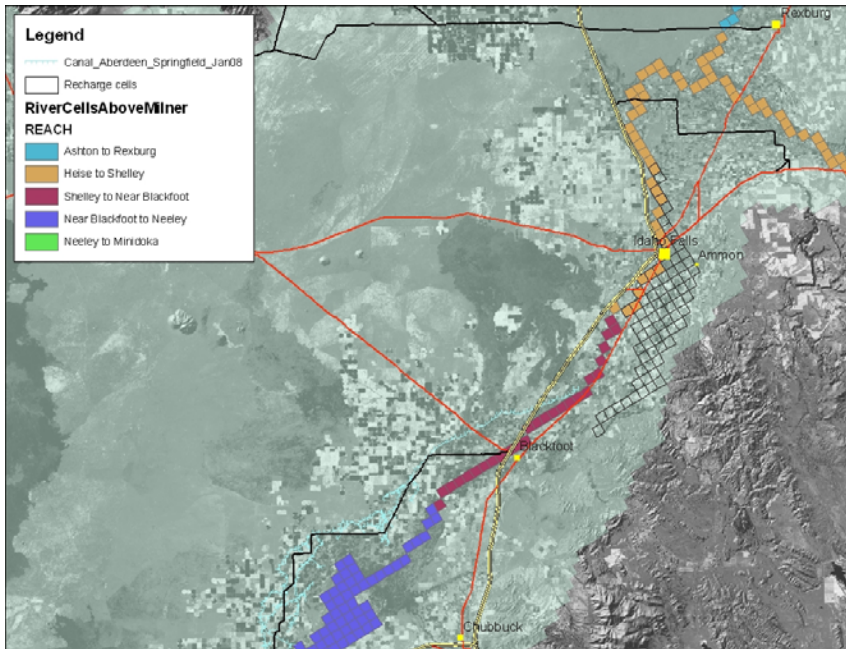
# Great Feeder Canals



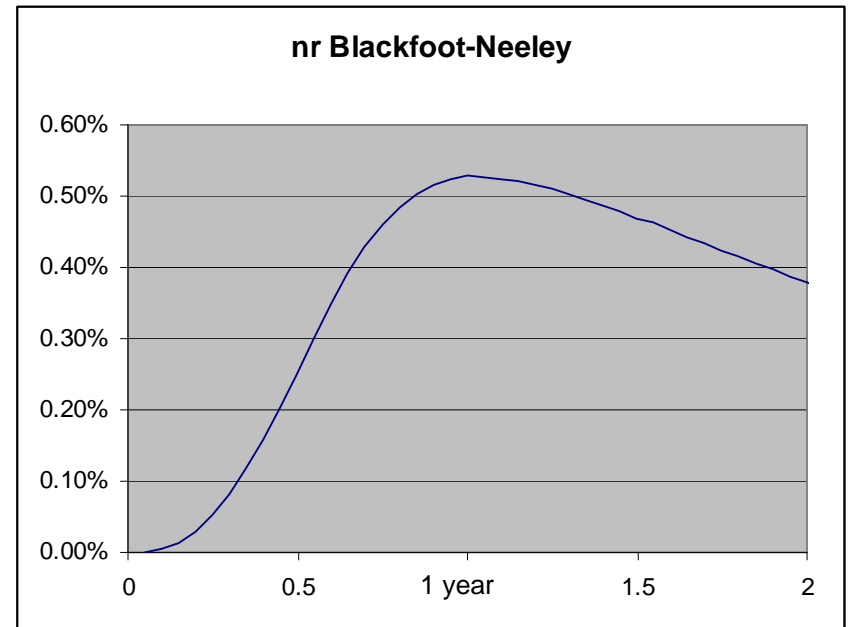
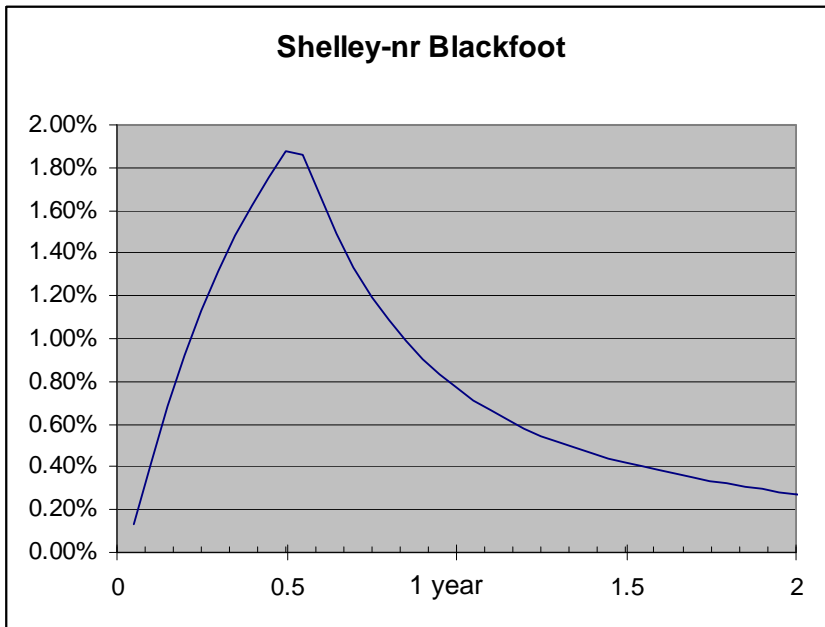
# Great Feeder Canals



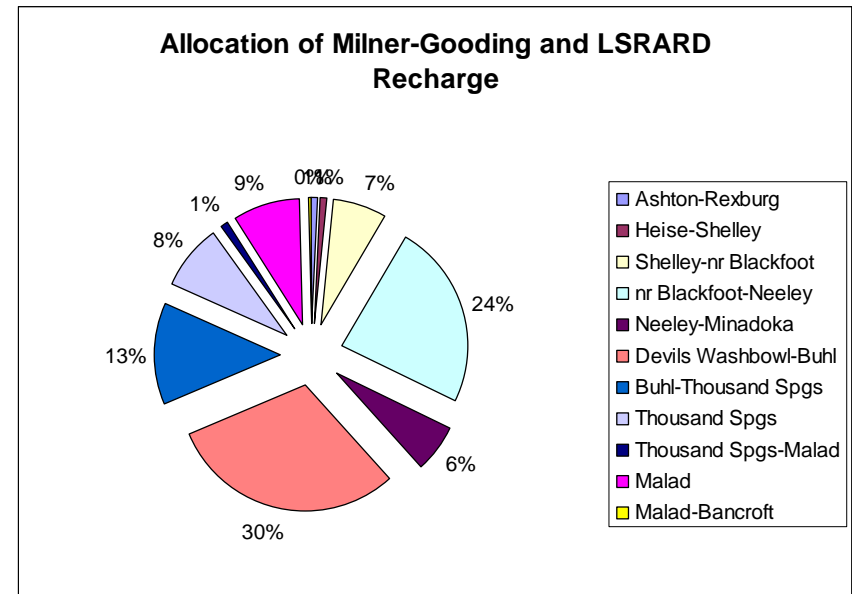
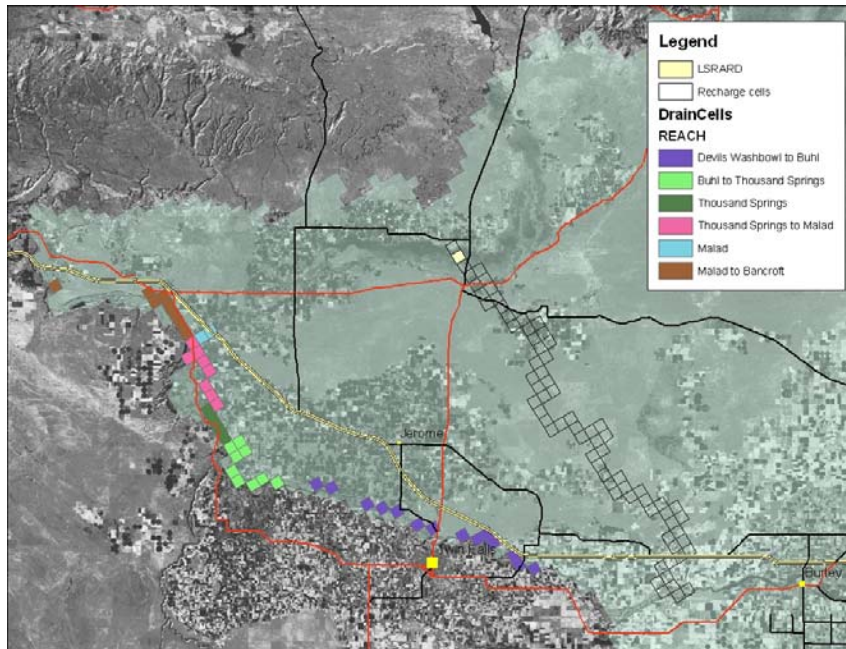
# Idaho Irrigation Dist.



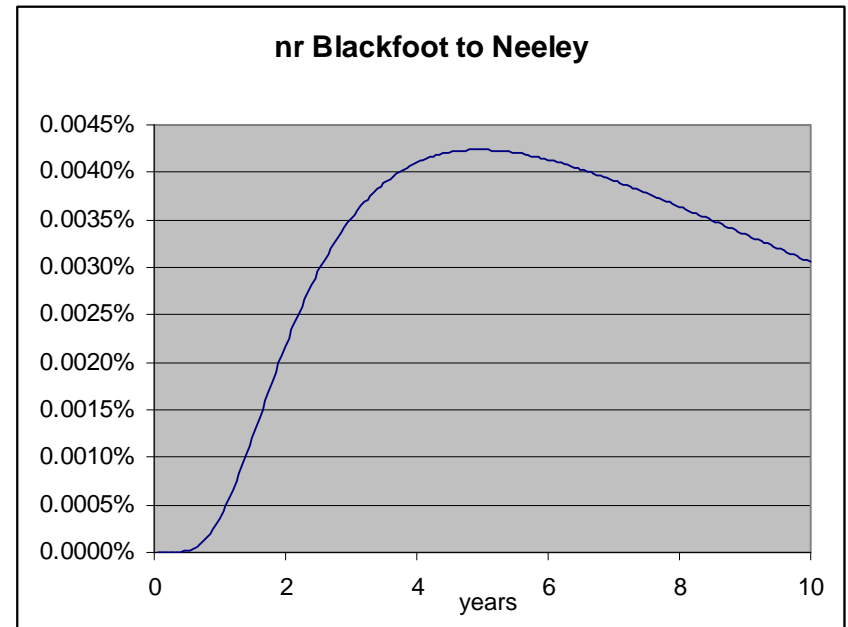
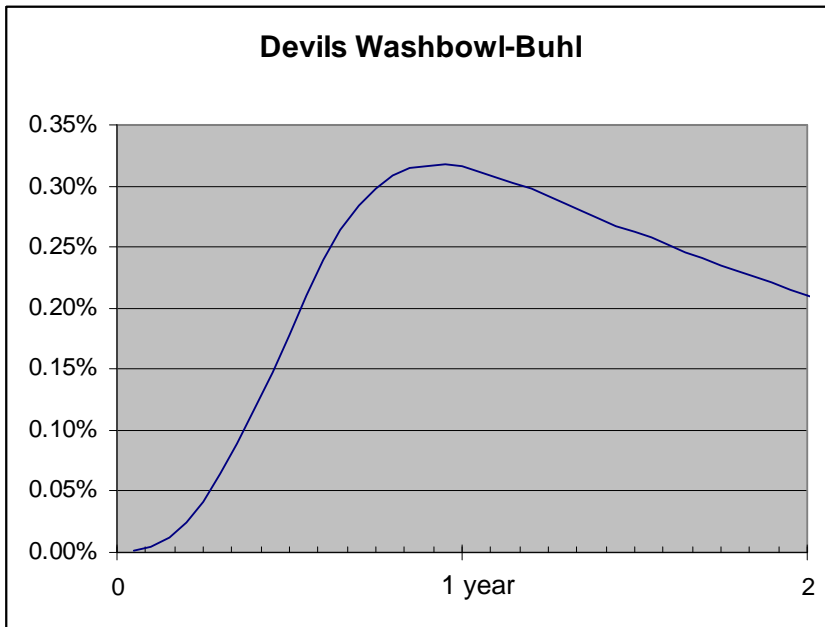
# Idaho Irrigation Dist.



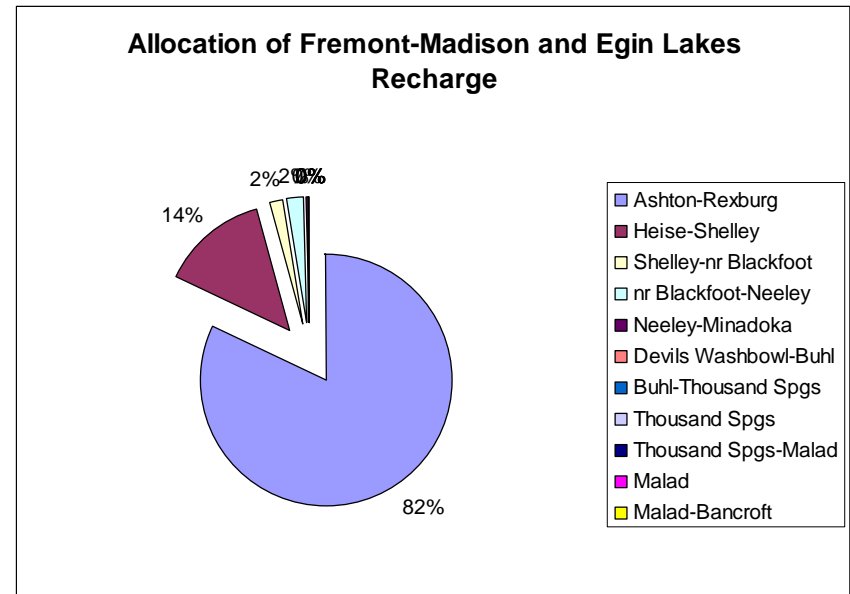
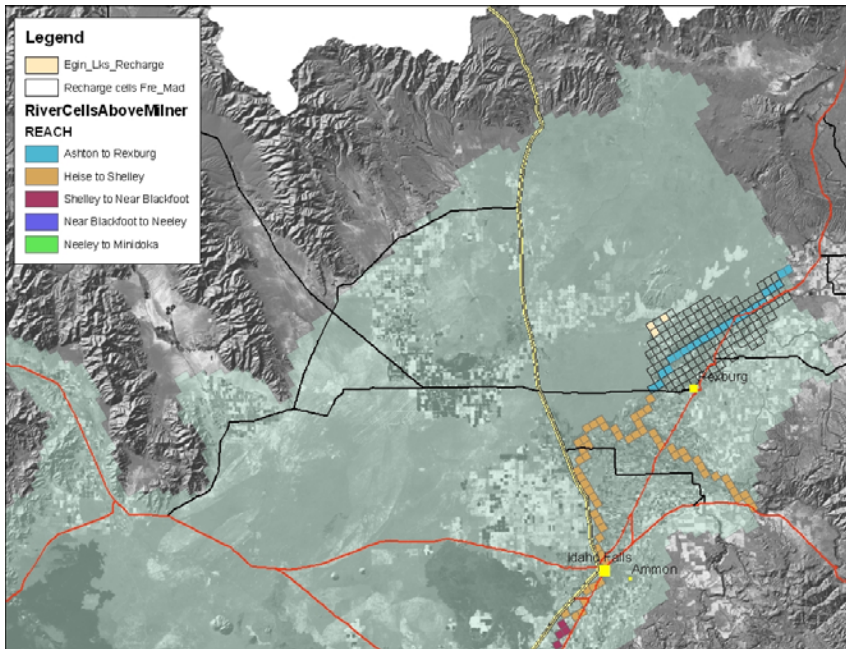
# Milner-Gooding and LSRARD



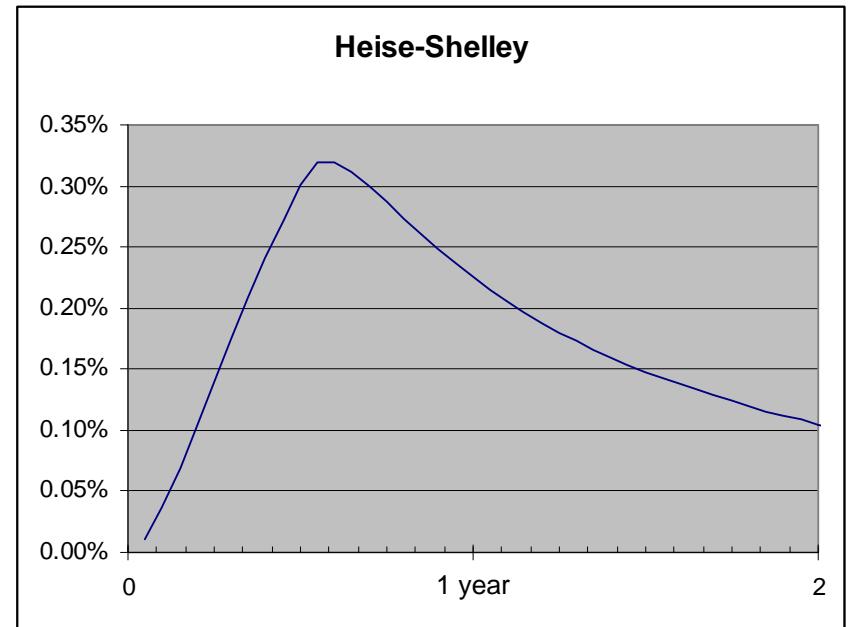
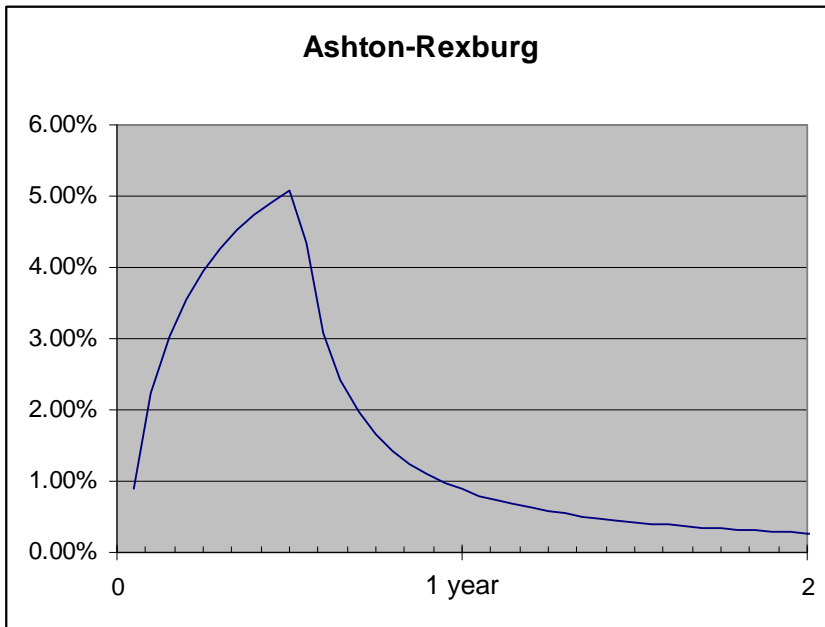
# Milner-Gooding and LSRARD



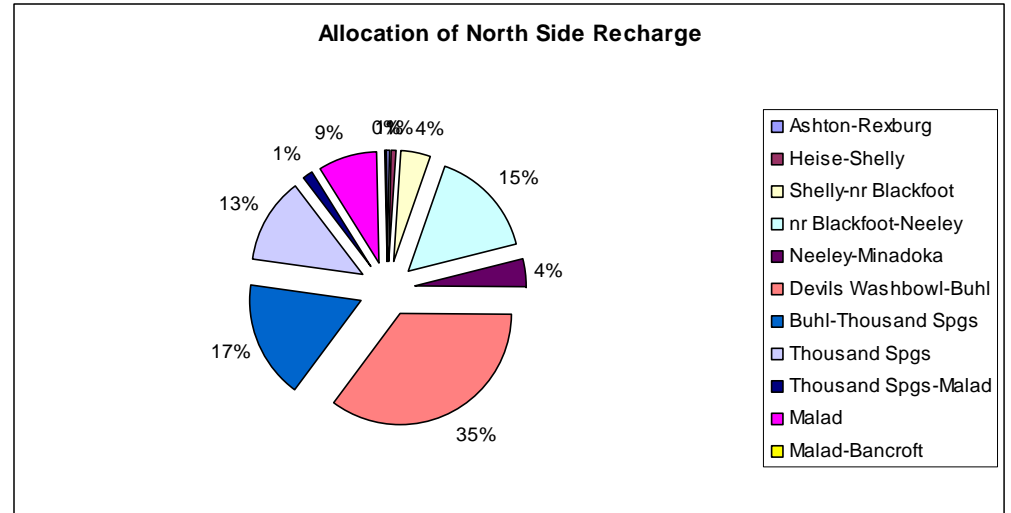
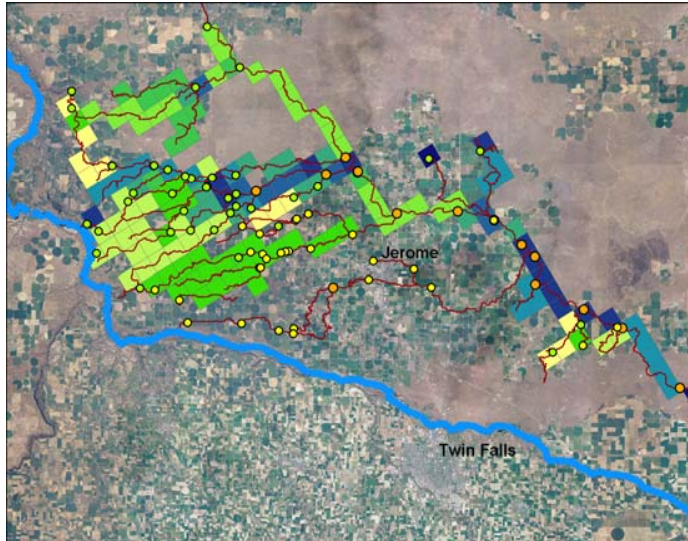
# Fremont-Madison & Egin Lakes



# Fremont-Madison & Egin Lakes



# North Side



# North Side

