

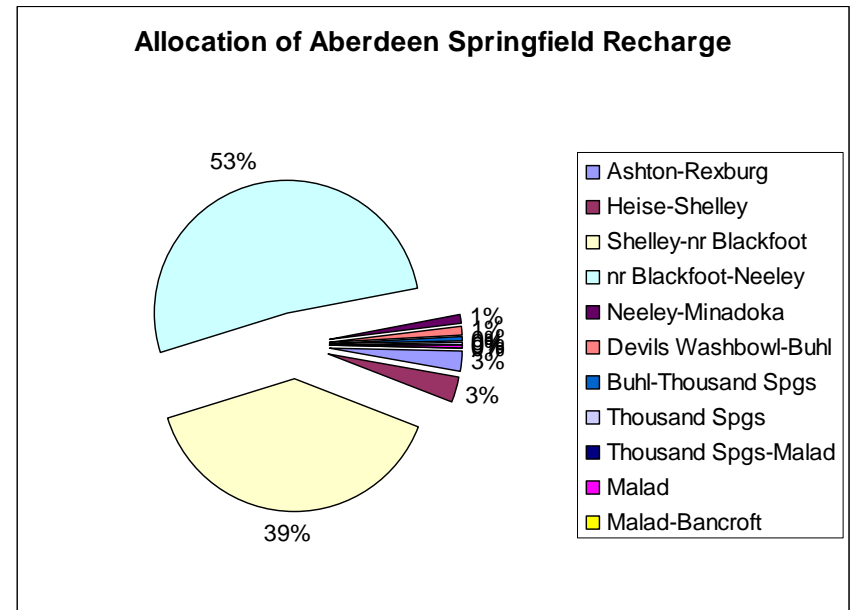
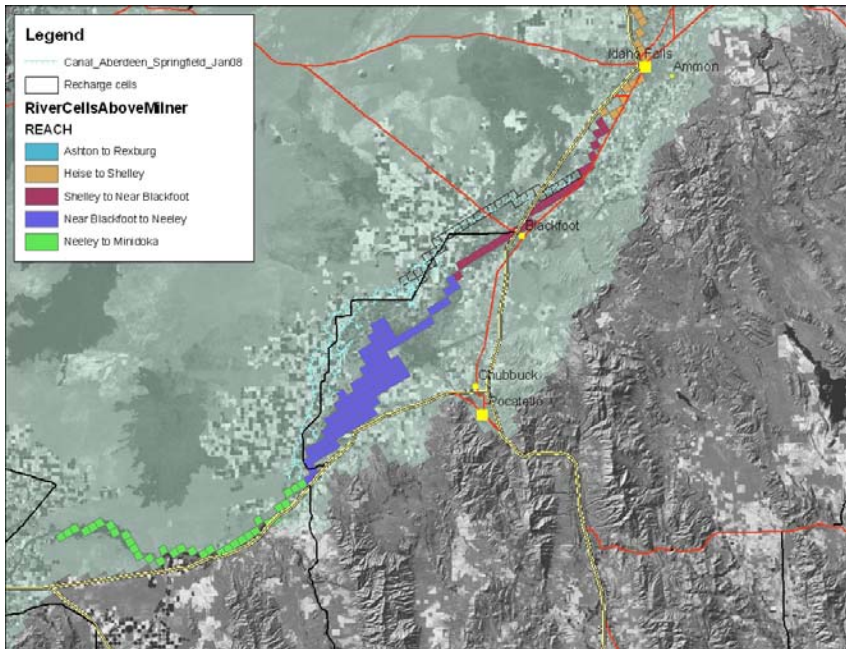


Steady State and Transient Impacts to the Snake River From Recharge in Selected Canals

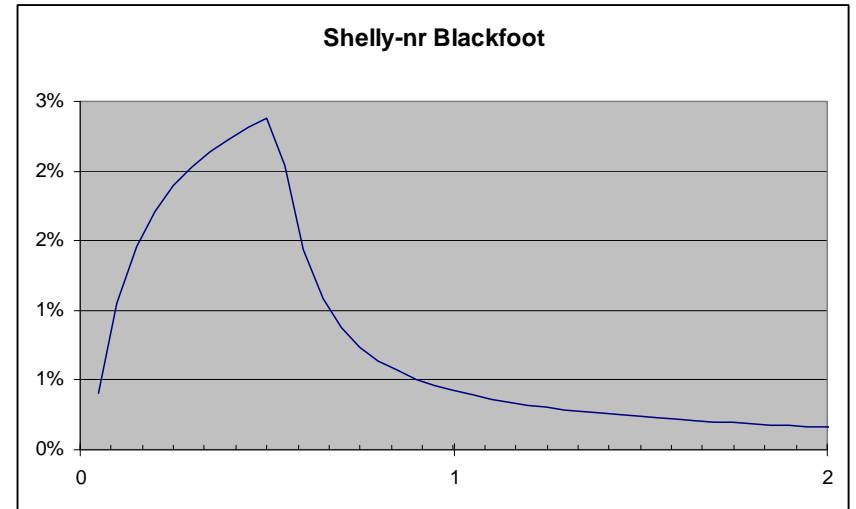
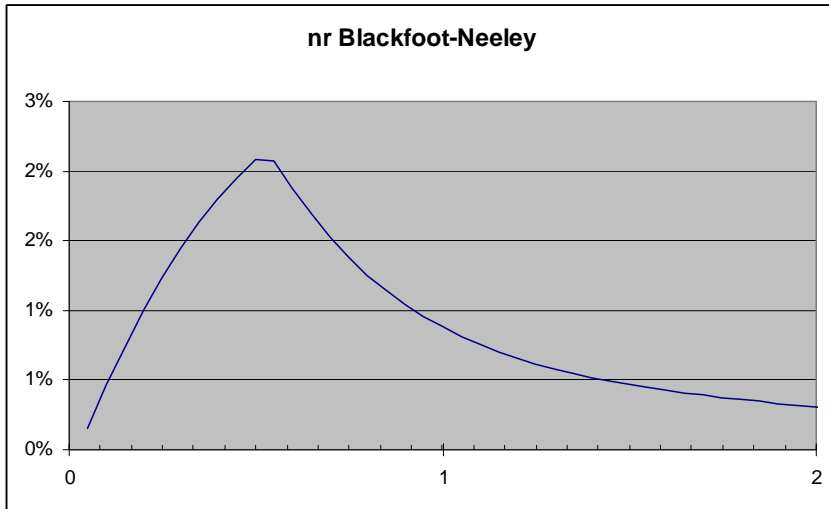
Allan Wylie, IDWR, July 2009



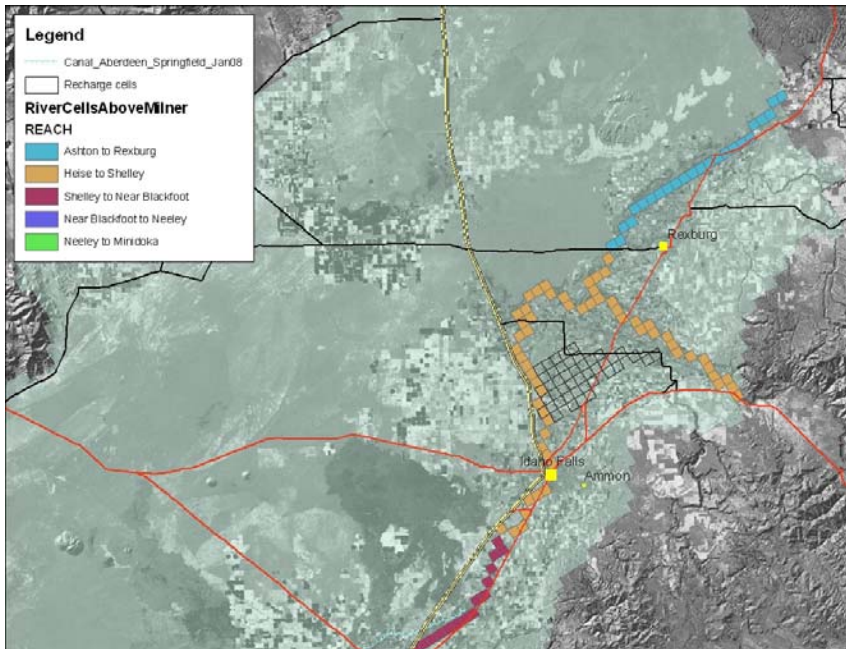
Aberdeen Springfield



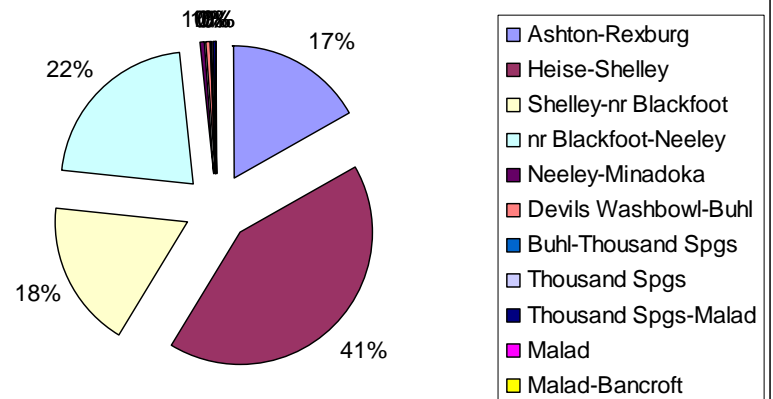
Aberdeen Springfield



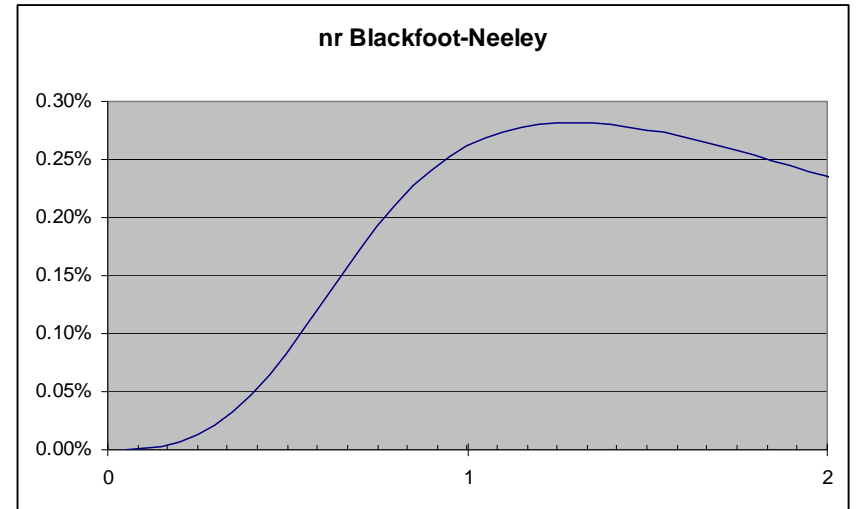
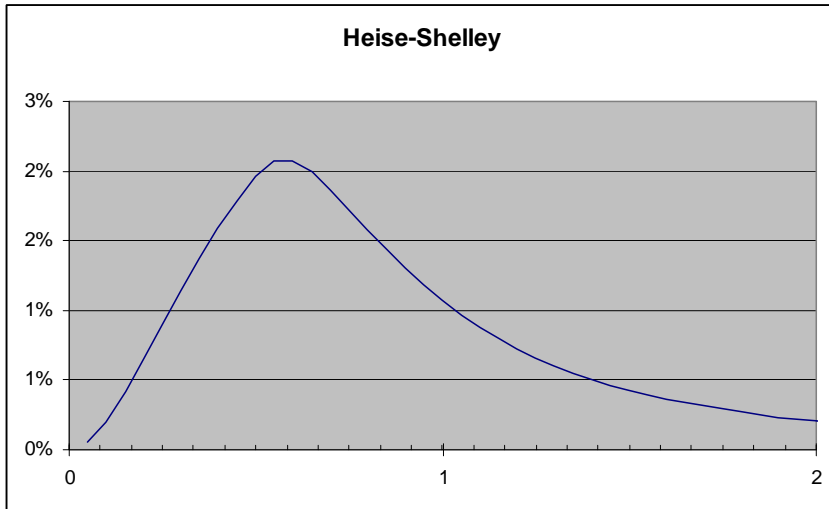
Burgess Canal



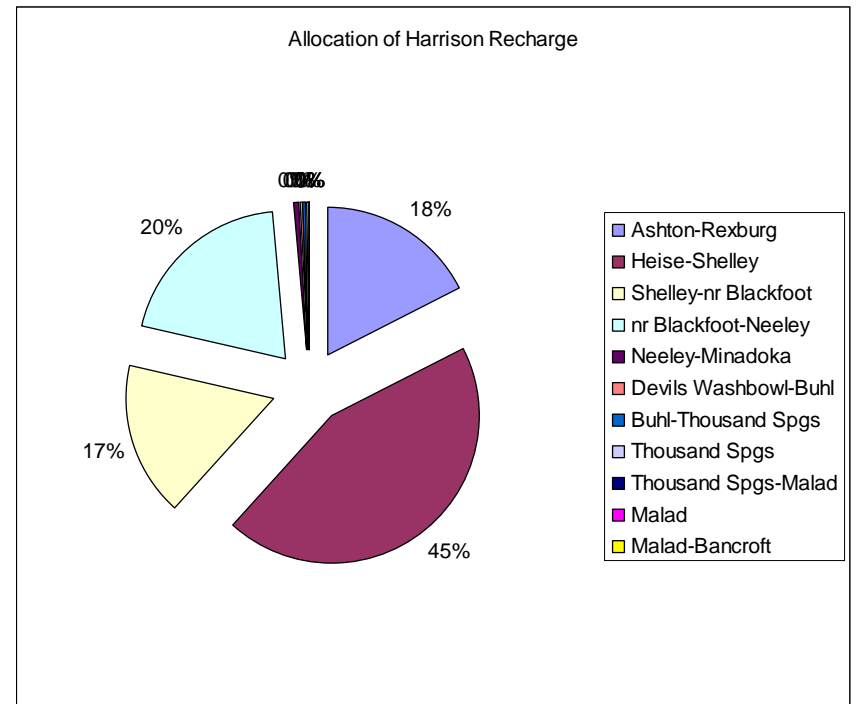
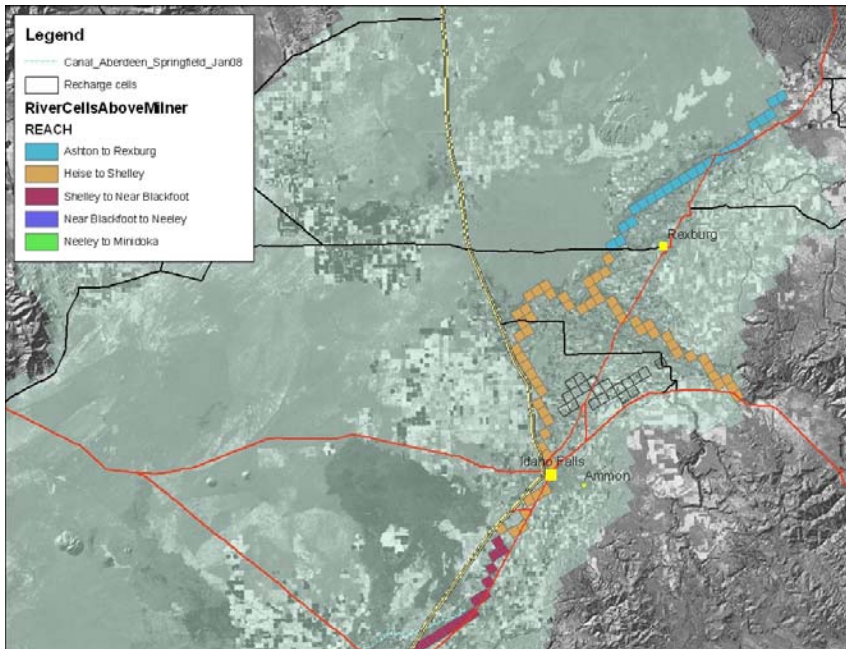
Allocation of Burgess Recharge



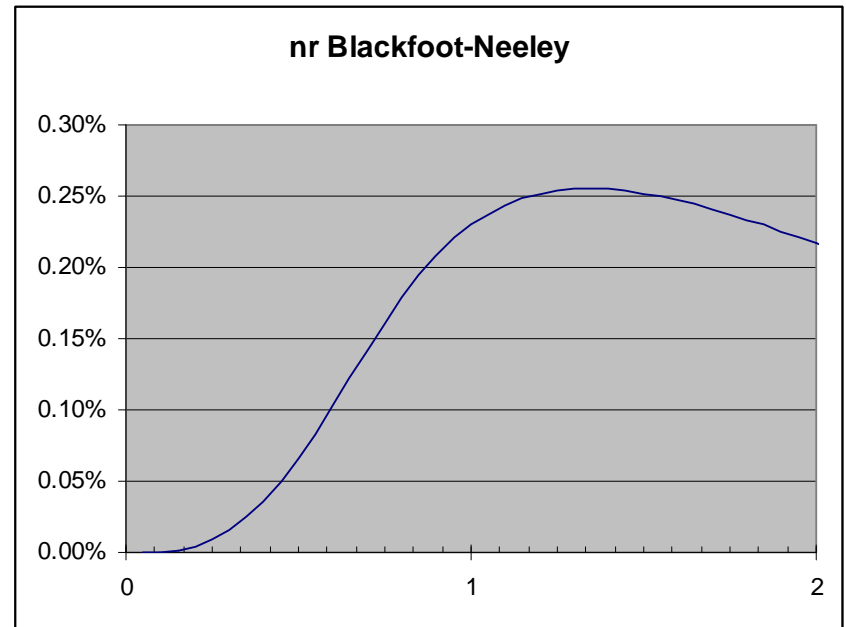
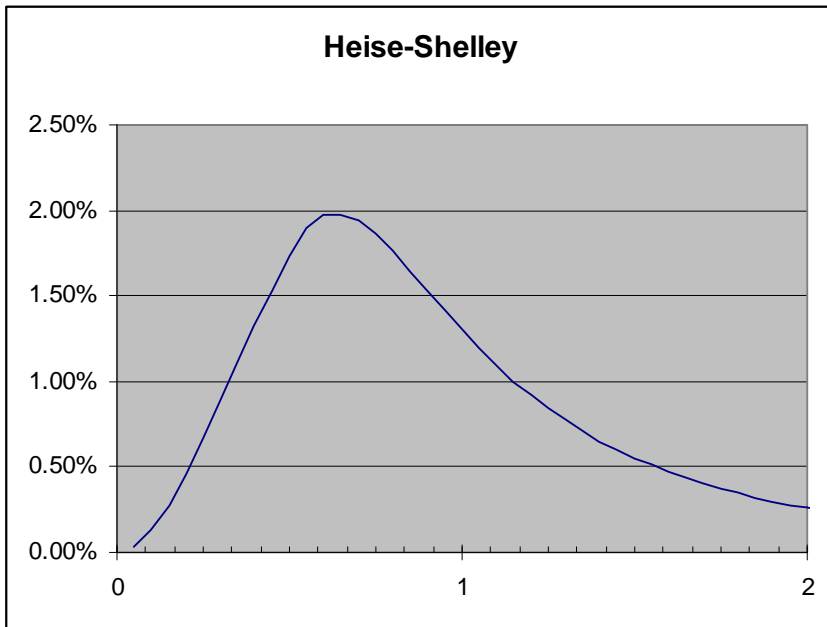
Burgess Canal



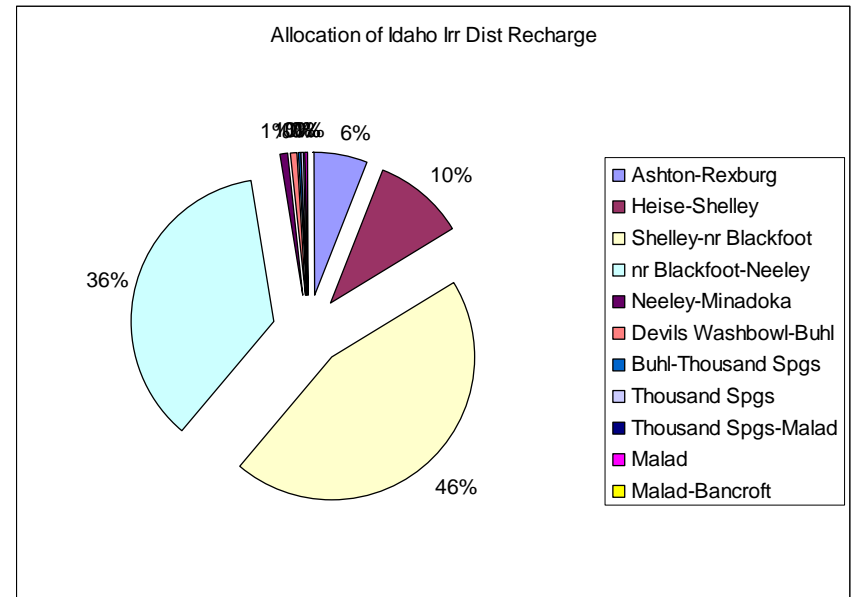
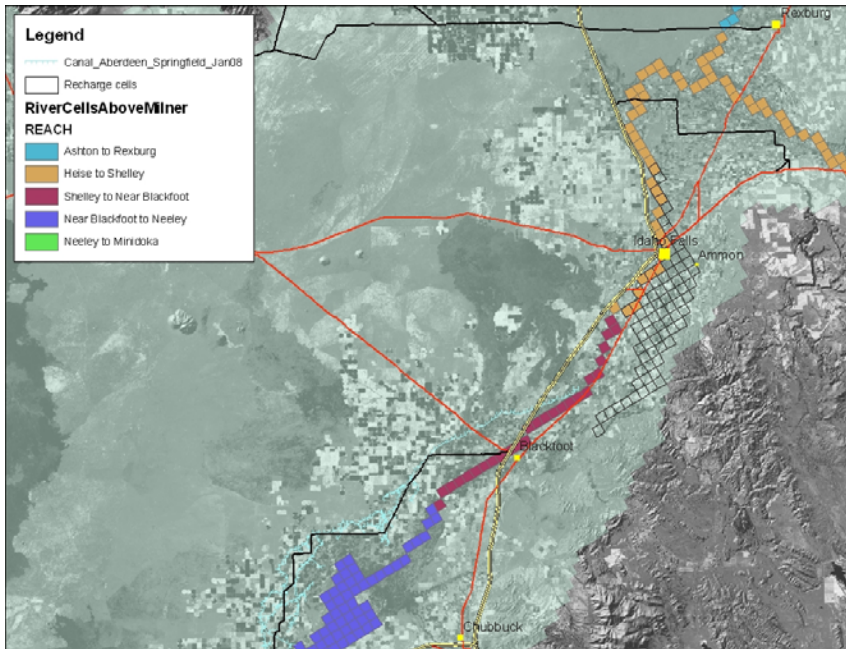
Harrison Canal



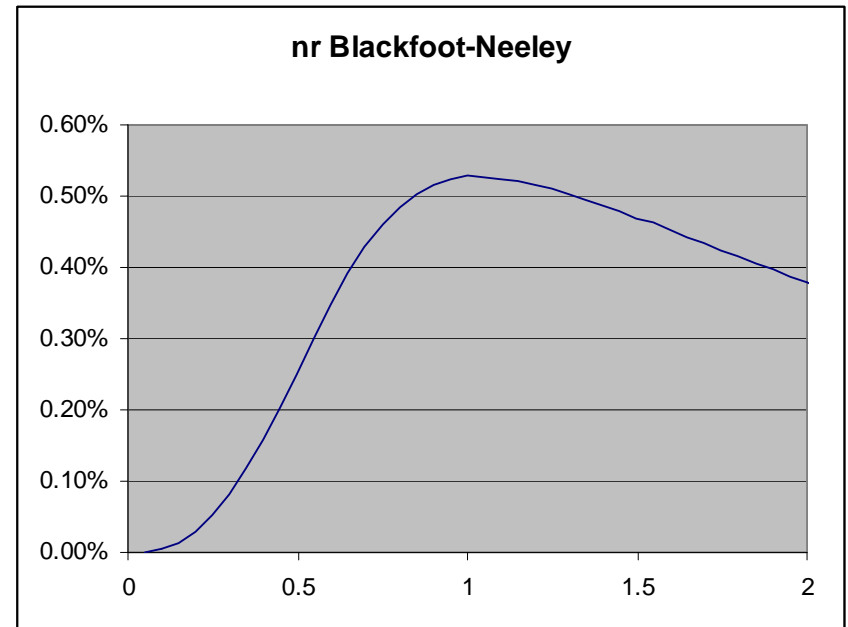
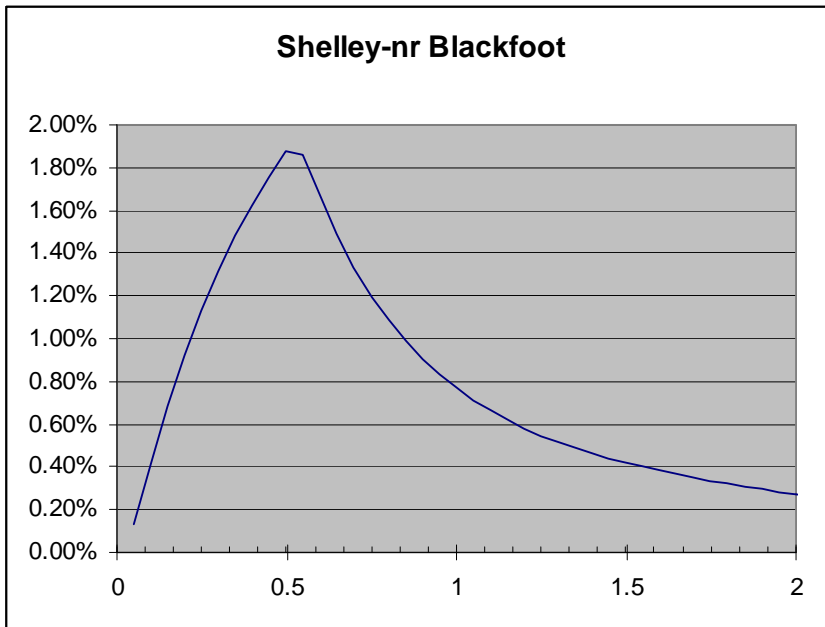
Harrison Canal



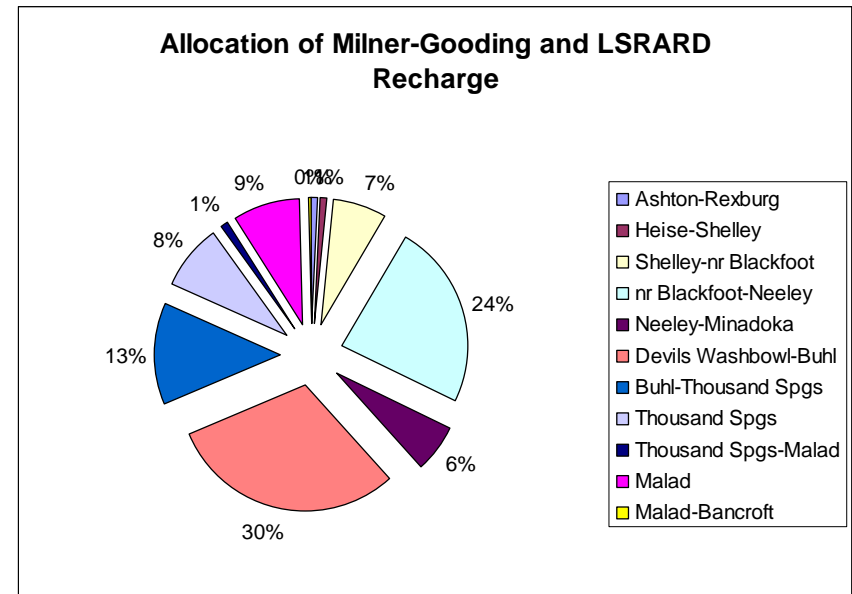
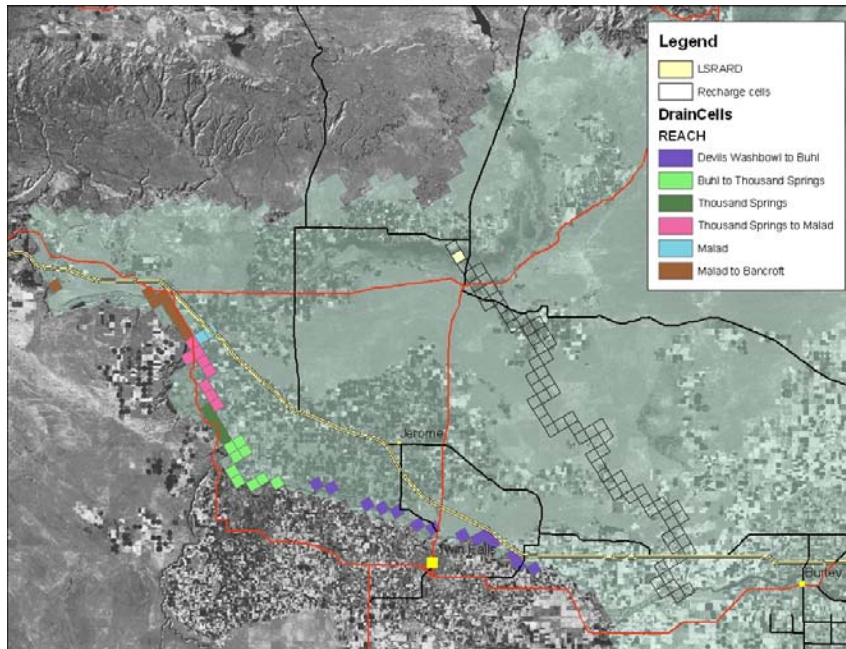
Idaho Irrigation Dist.



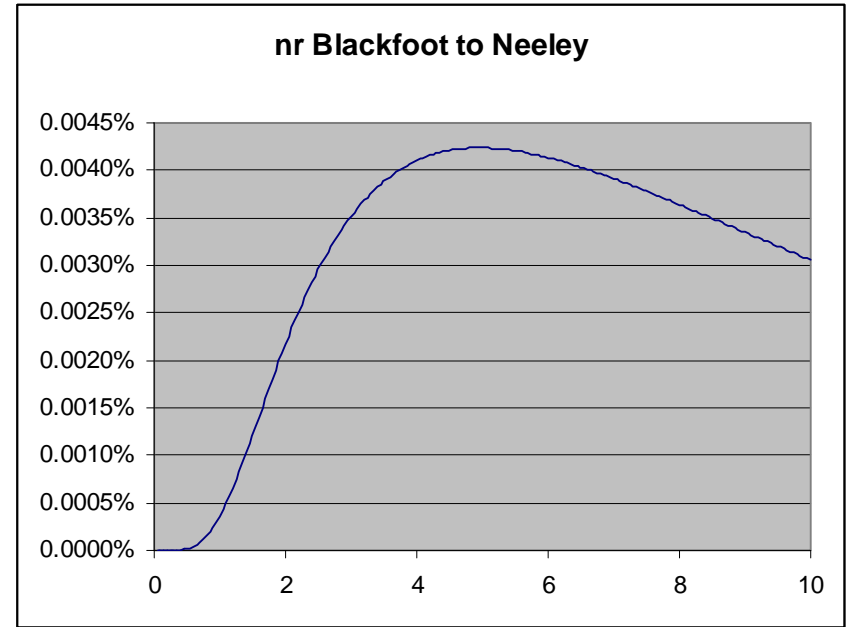
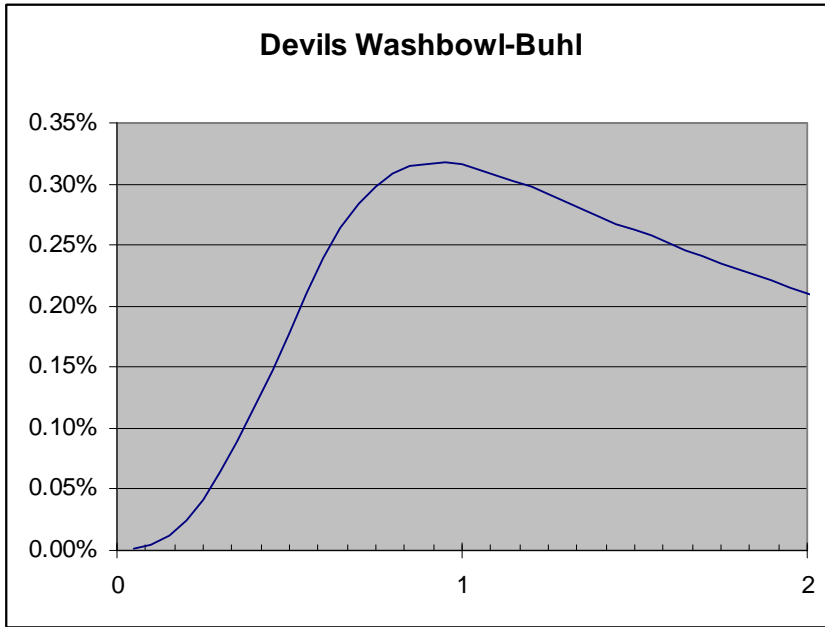
Idaho Irrigation Dist.



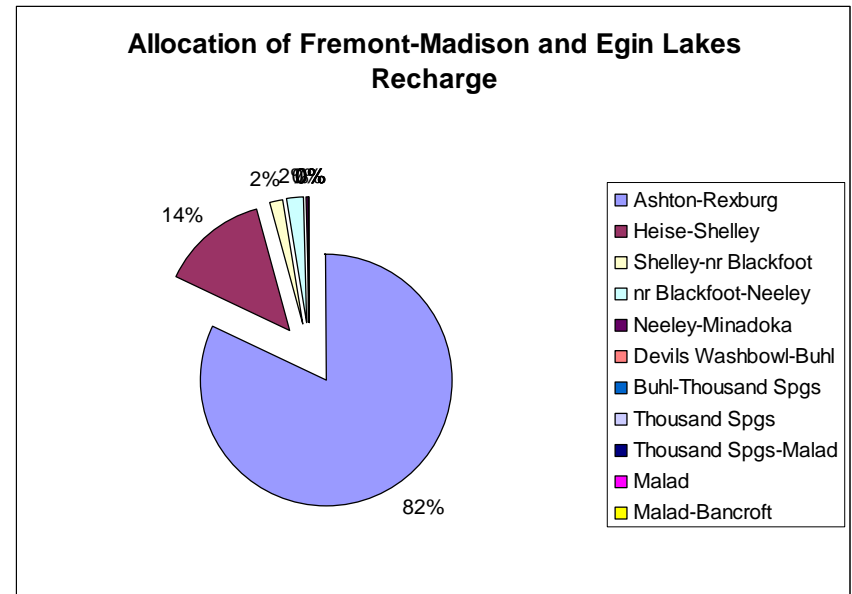
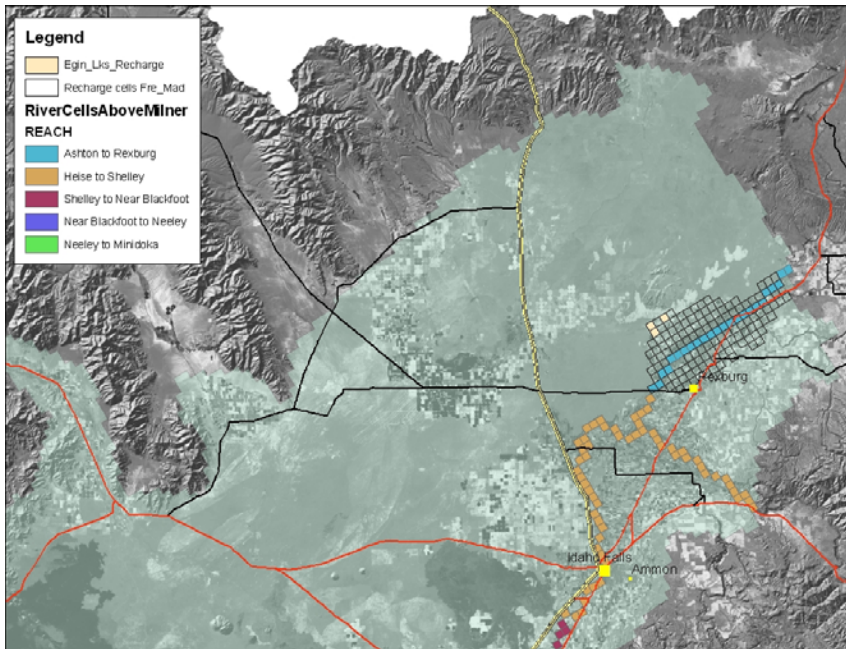
Milner-Gooding and LSRARD



Milner-Gooding and LSRARD



Fremont-Madison & Egin Lakes



Fremont-Madison & Egin Lakes

