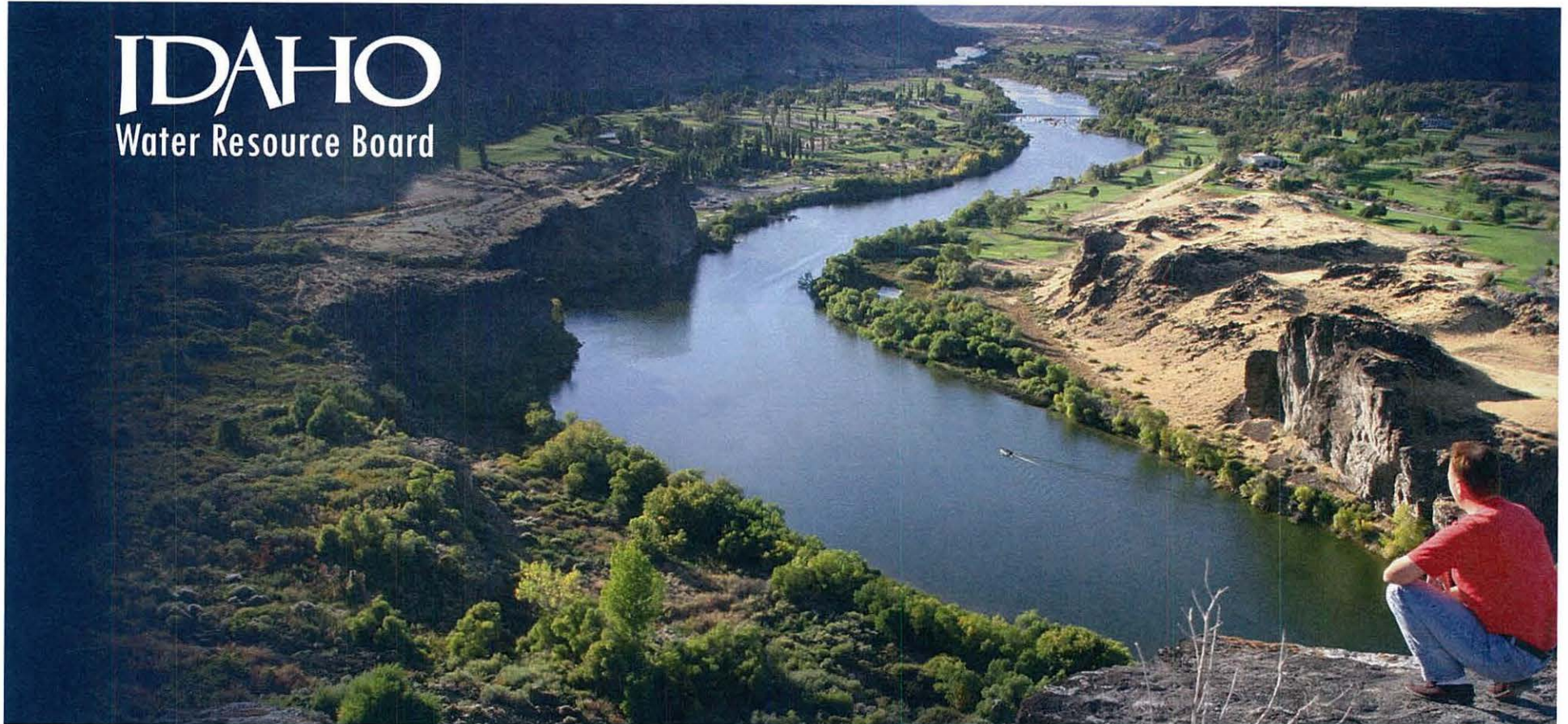


IDAHO
Water Resource Board



Idaho's Conservation Reserve Enhancement Program (CREP)

Demand Reduction Working Group

Neeley Miller, Idaho Department of Water Resources

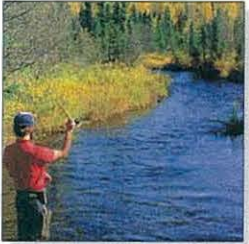
July 1, 2009





CREP is an enhancement of existing Conservation Reserve Program (CRP)

- Over 800,000 acres of dry farmland enrolled in CRP
- Program participants in almost every Idaho county

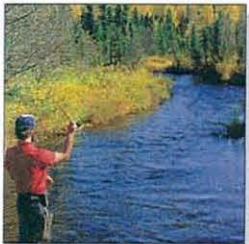


CREP combines CRP with a state match to bring program to irrigated ground



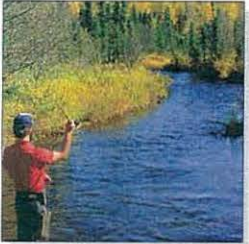
CREP Agreement enacted by Governor Risch and U.S. Secretary of Agriculture Johanns in May of 2006





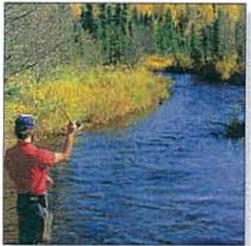
Goals of CREP:

- Set aside up to 100,000 acres of irrigated crop land to reduce consumptive water use from the ESPA by up to 200,000 acre-feet annually, for a period of 15 years
- CREP Agreement also references environmental and energy conservation benefits



CREP Eligibility:

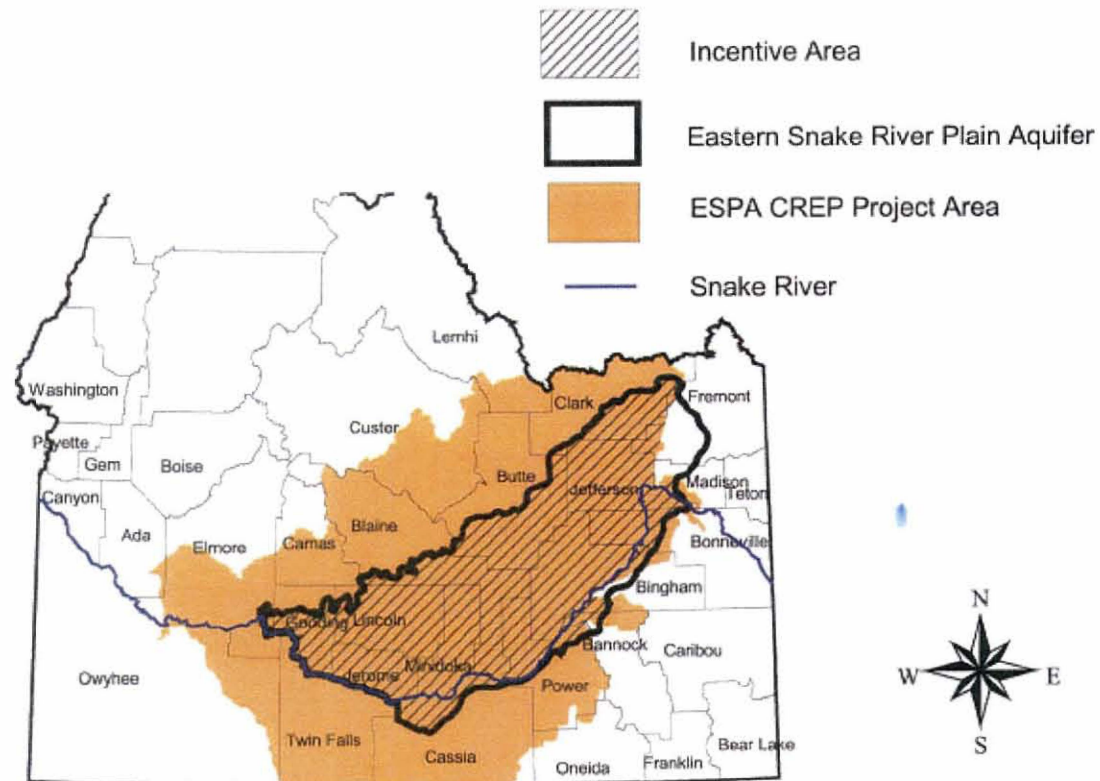
- Land Must be within the “ESPA CREP Area”
- Land must have been irrigated by ground water or surface streams with no direct surface connection to the Snake River for 4 out of the 6 years from 1996-2001
- Land must have been irrigated within 24 months prior to offer submission or have been included in an IDWR-approved mitigation plan
- Land must be physically and legally capable of being irrigated in a normal manner at the time an offer is submitted



CREP Eligibility (continued):

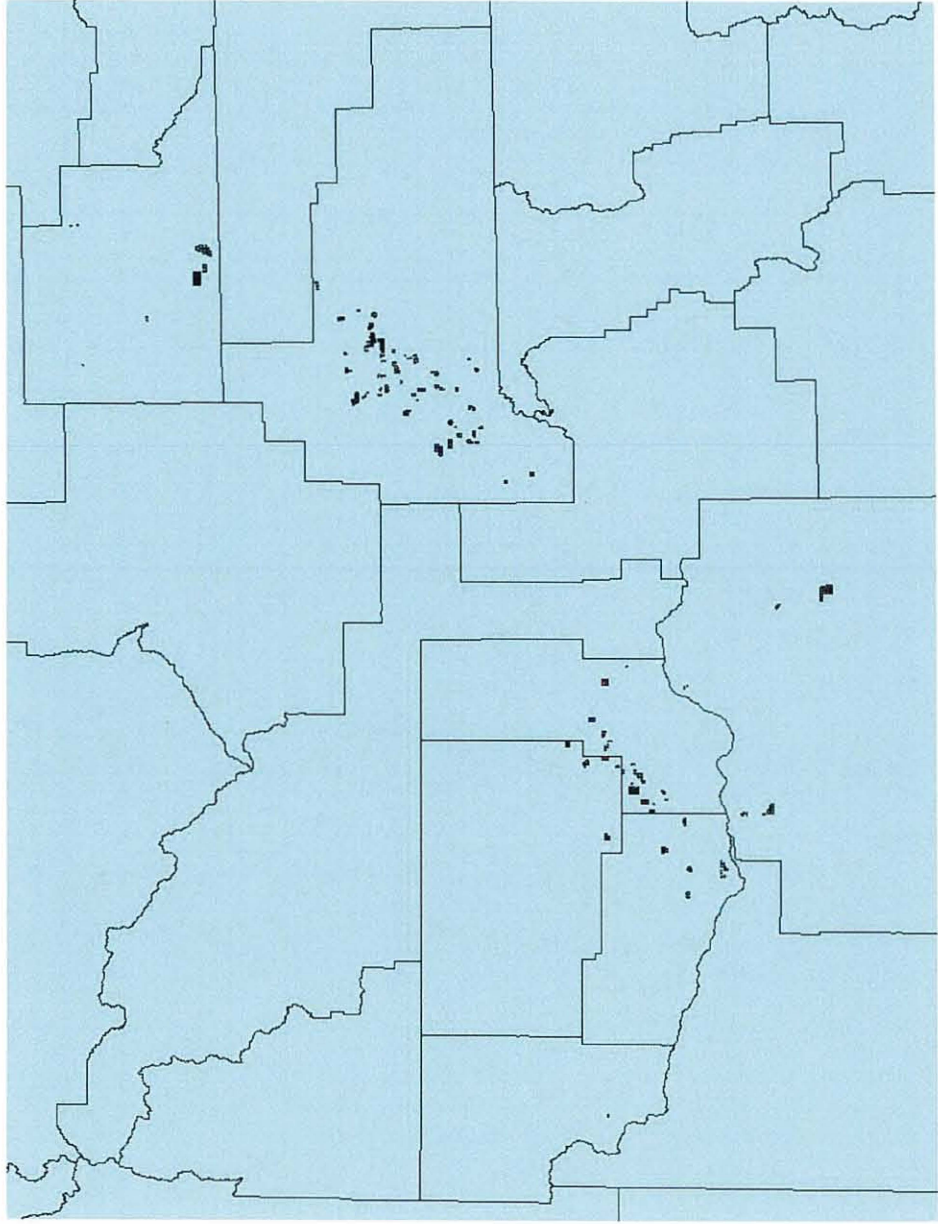
- Program participant must enter into an “Agreement not to Divert Water” with the State of Idaho
- Land must have Erodibility Index of 8 or greater or be located within a Conservation Priority Area
- No more than 25% of a county’s cropland may be in CRP/CREP programs

ESPA CREP Incentive Area

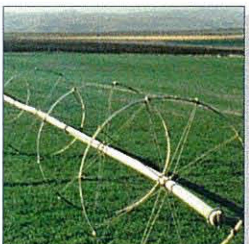
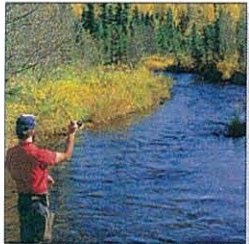
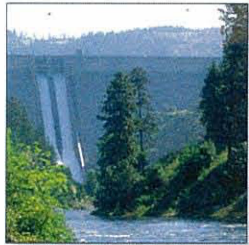


IDAHO

Water Resource Board



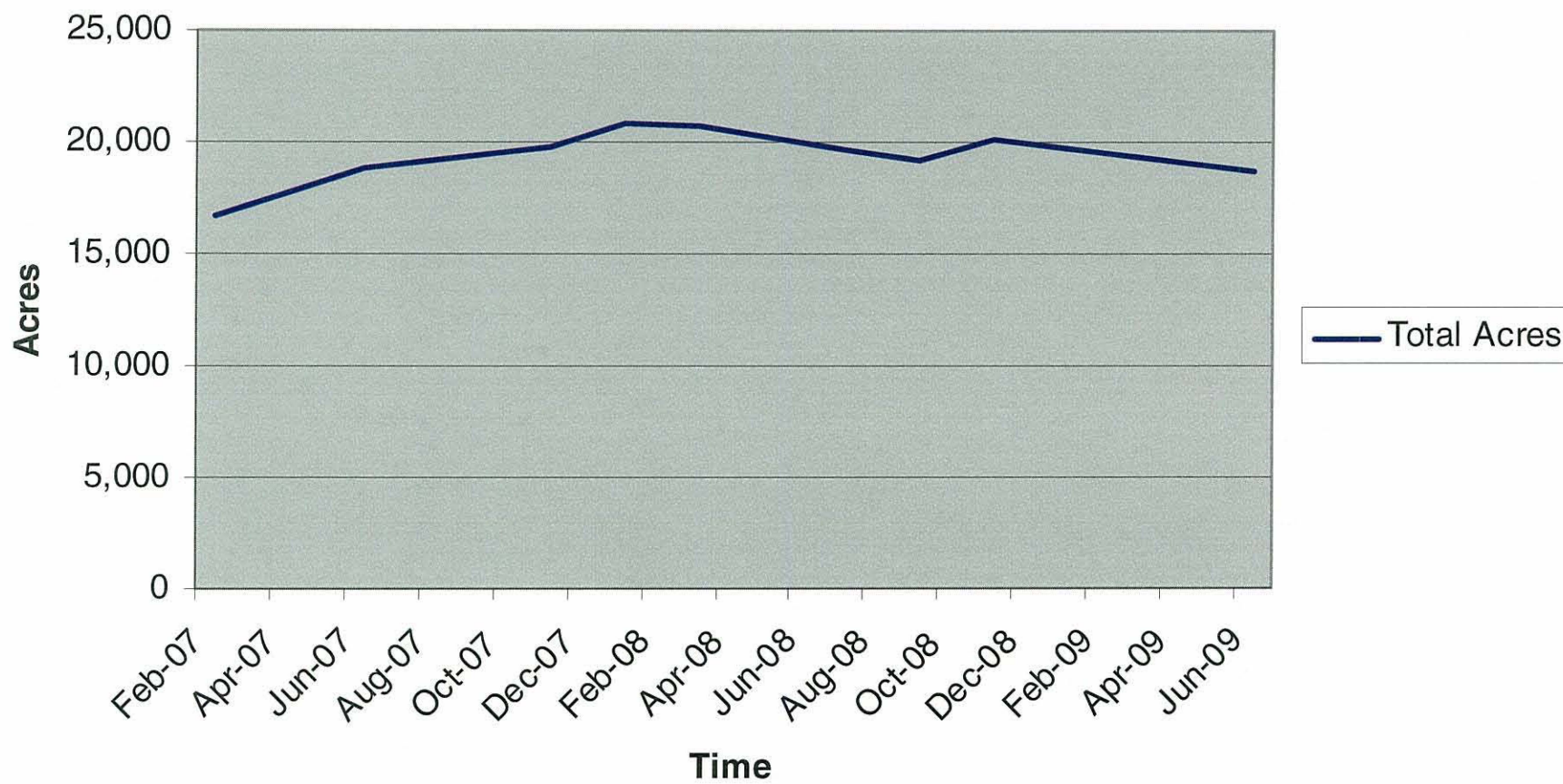
CREP enrollment as of summer 2009:



| County | Acres Approved by FSA County Committee |
|-----------------|---|
| Bingham/Power | 7,905 |
| Bonneville | 154 |
| Cassia | 2,245 |
| Elmore | 0 |
| Gooding | 106 |
| Jefferson/Clark | 1,889 |
| Jerome | 586 |
| Lincoln/Blaine | 524 |
| Minidoka | 5,289 |
| Twin Falls | 43 |
| TOTAL | 18,741 |

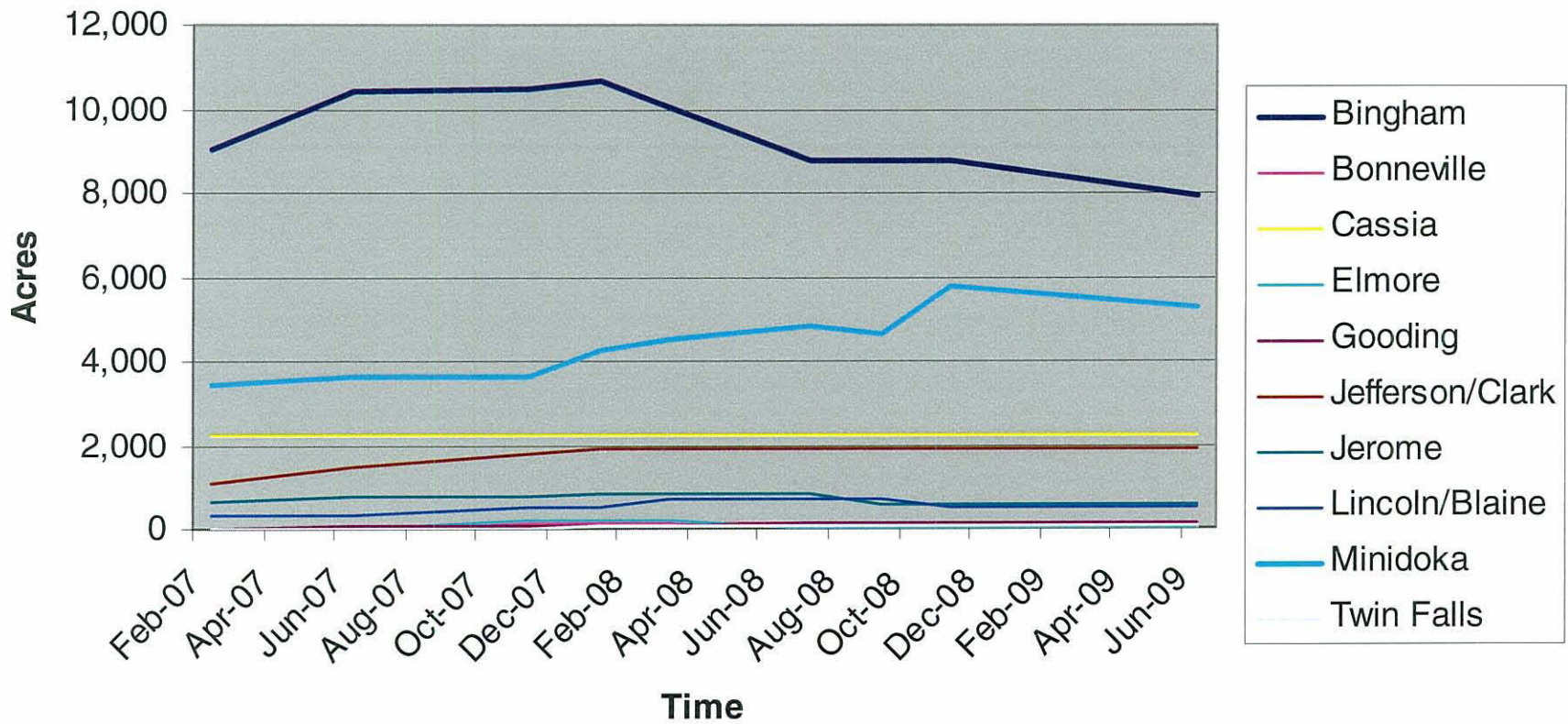


Conservation Reserve Enhance Program (CREP) Summary



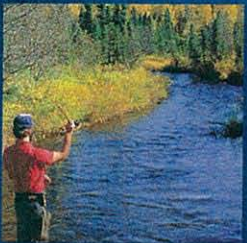


Conservation Reserve Enhancement Program (CREP) - County Figures



Potential State-level changes to CREP aimed at increasing enrollment:

- Water right transfers that are associated with CREP applications are now expedited – **completed**
- Increase State incentive payment – **could potentially be done through CAMP process**
- Others?



Contact Information:

Neeley Miller
Water Resource Planner, Senior
Idaho Department of Water Resources
(208) 287-4831
Neeley.Miller@idwr.idaho.gov