

Water-level Changes from Phased-in Application of Water Budget Adjustments

Presented to the
Comprehensive Aquifer Management
Plan Committee
Idaho Falls, February 2008

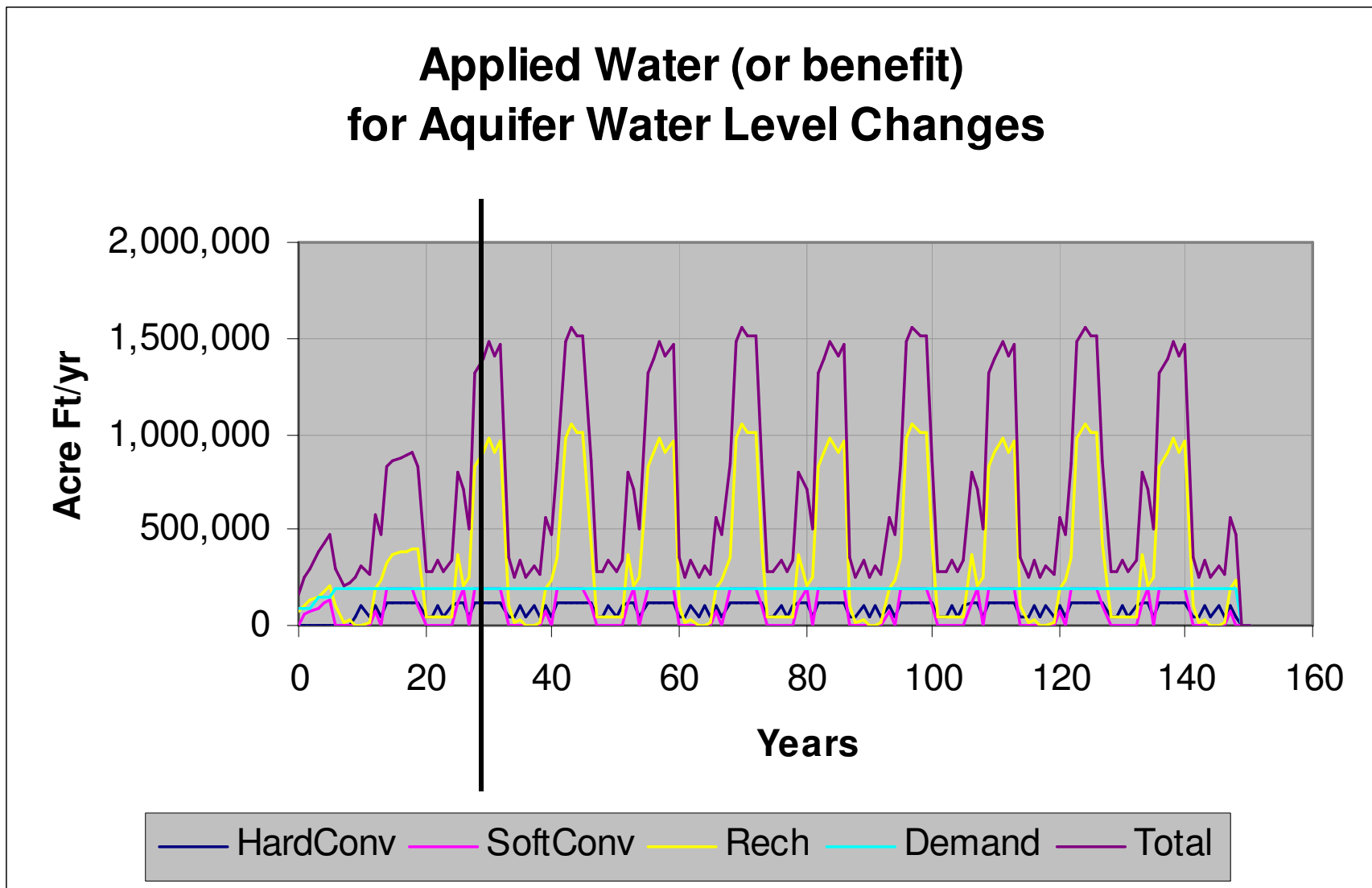


B. Contor
Idaho Water Resources Research Institute

Outline

- Level of effort applied
- What do the results mean?
- Summary of Results

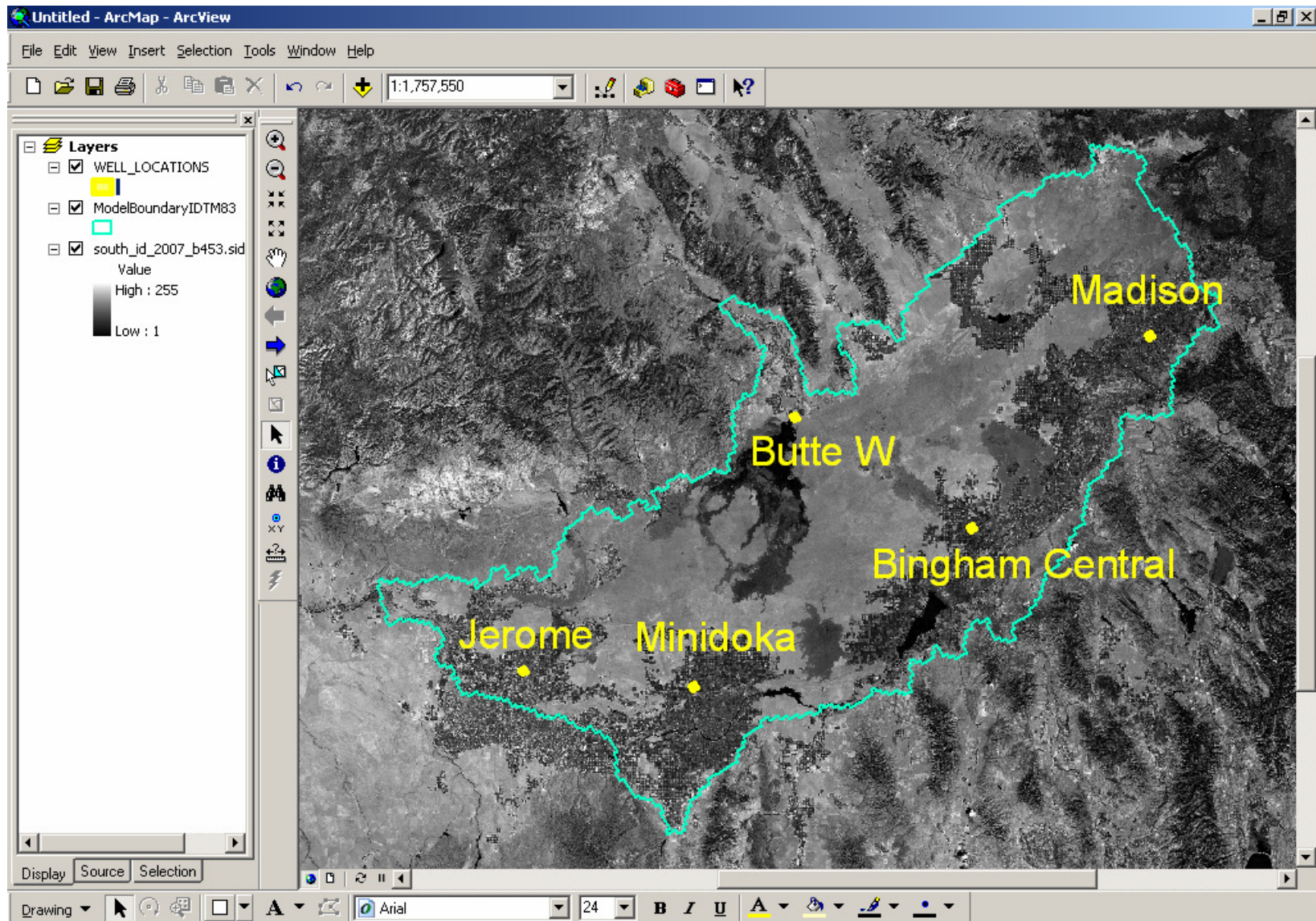
1. Level of Effort Applied



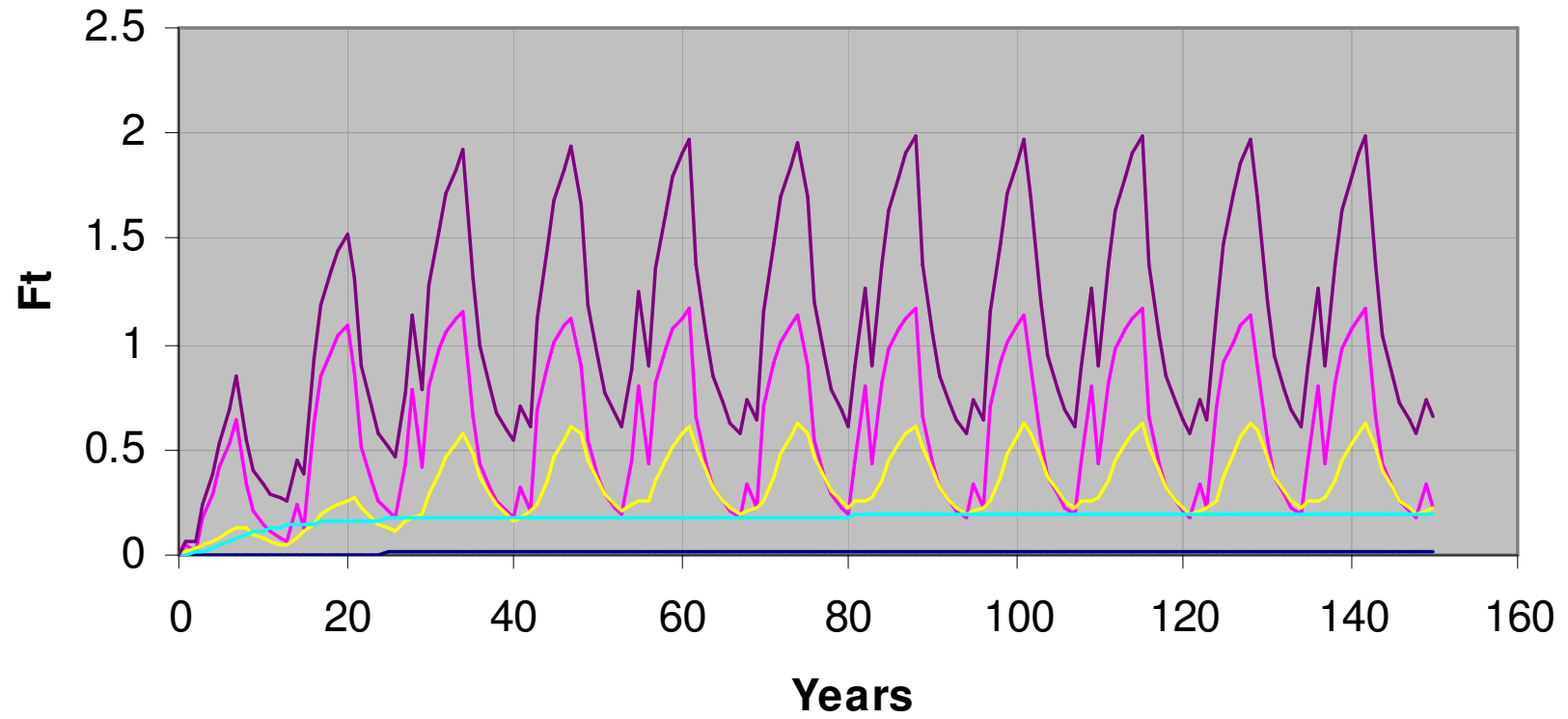
2. What do results mean?

- Model input is *change* in water budget
- Model output is an estimate of *change*
 - river gains
 - spring discharges
 - **aquifer water levels**
- ***THESE ARE NOT PREDICTIONS!***

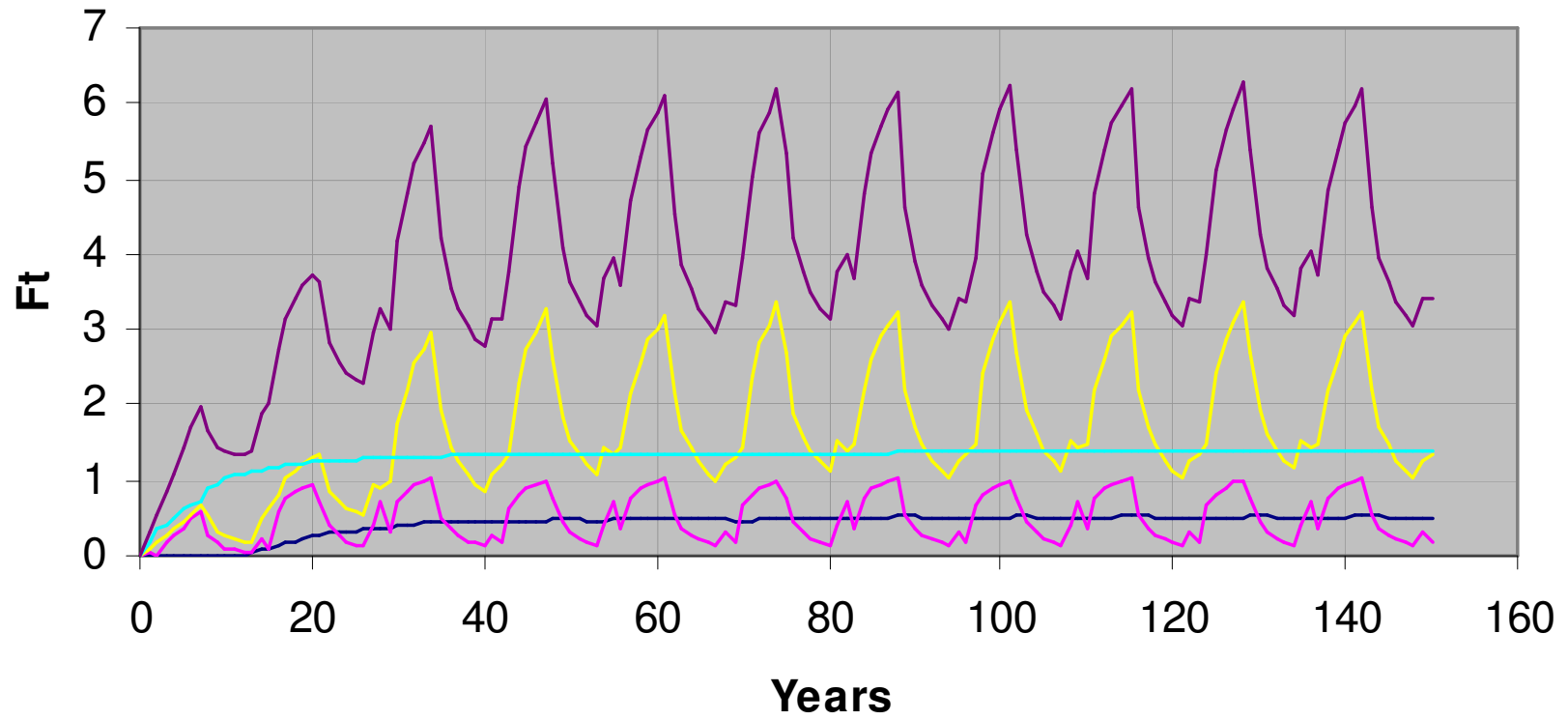
3. Water-level Changes



Aquifer Water-level Changes - Madison

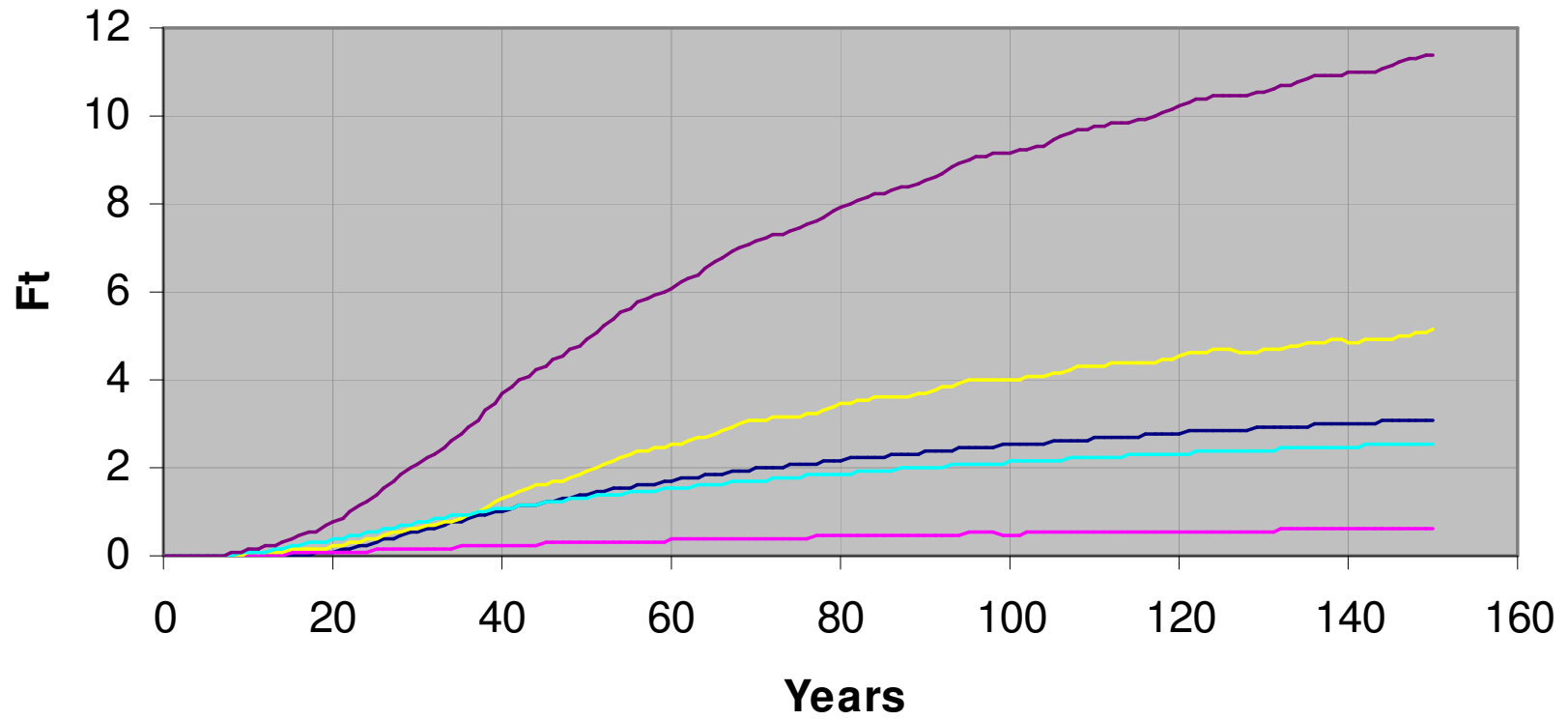


Aquifer Water-level Changes - Bingham Central



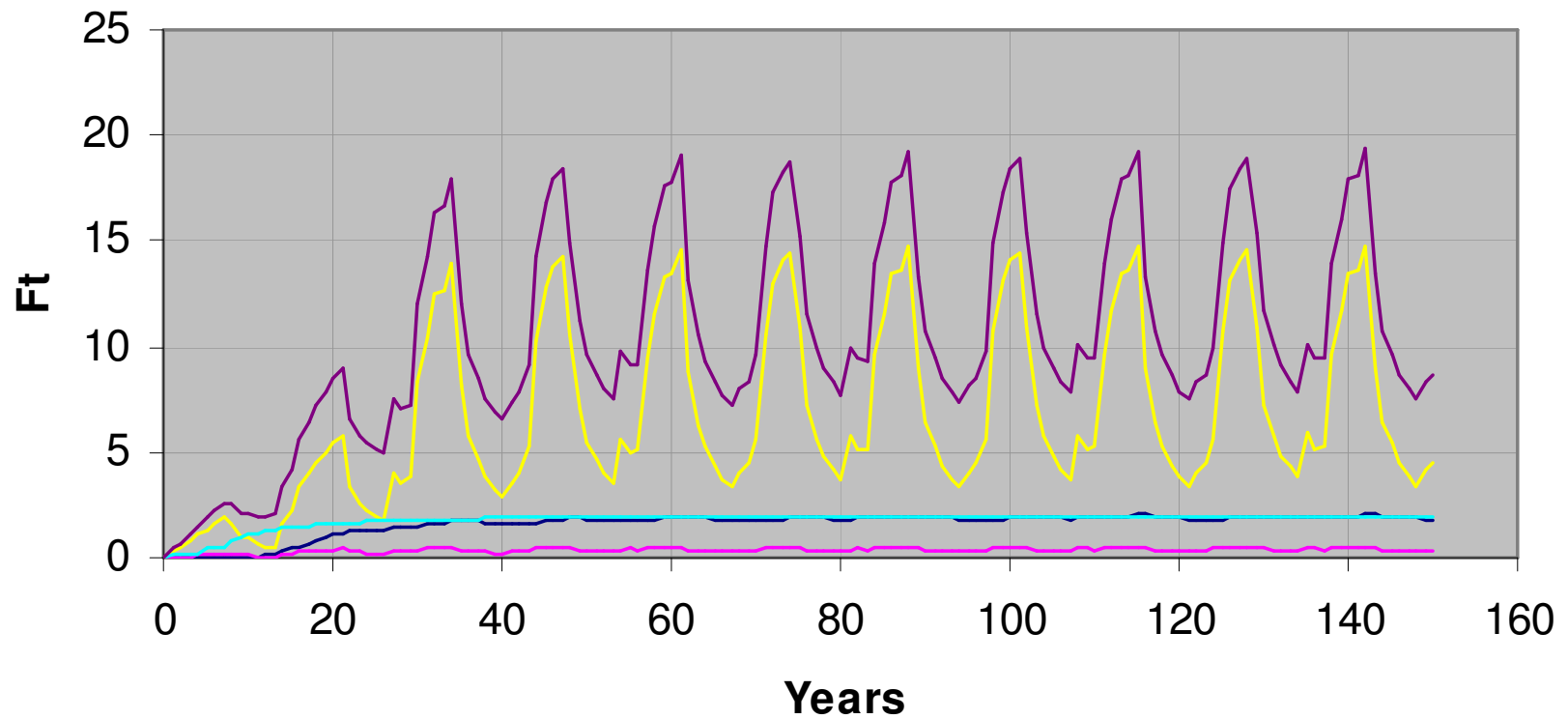
— HardConv — SoftConv — Rech — Demand — Total

Aquifer Water-level Changes - Butte West



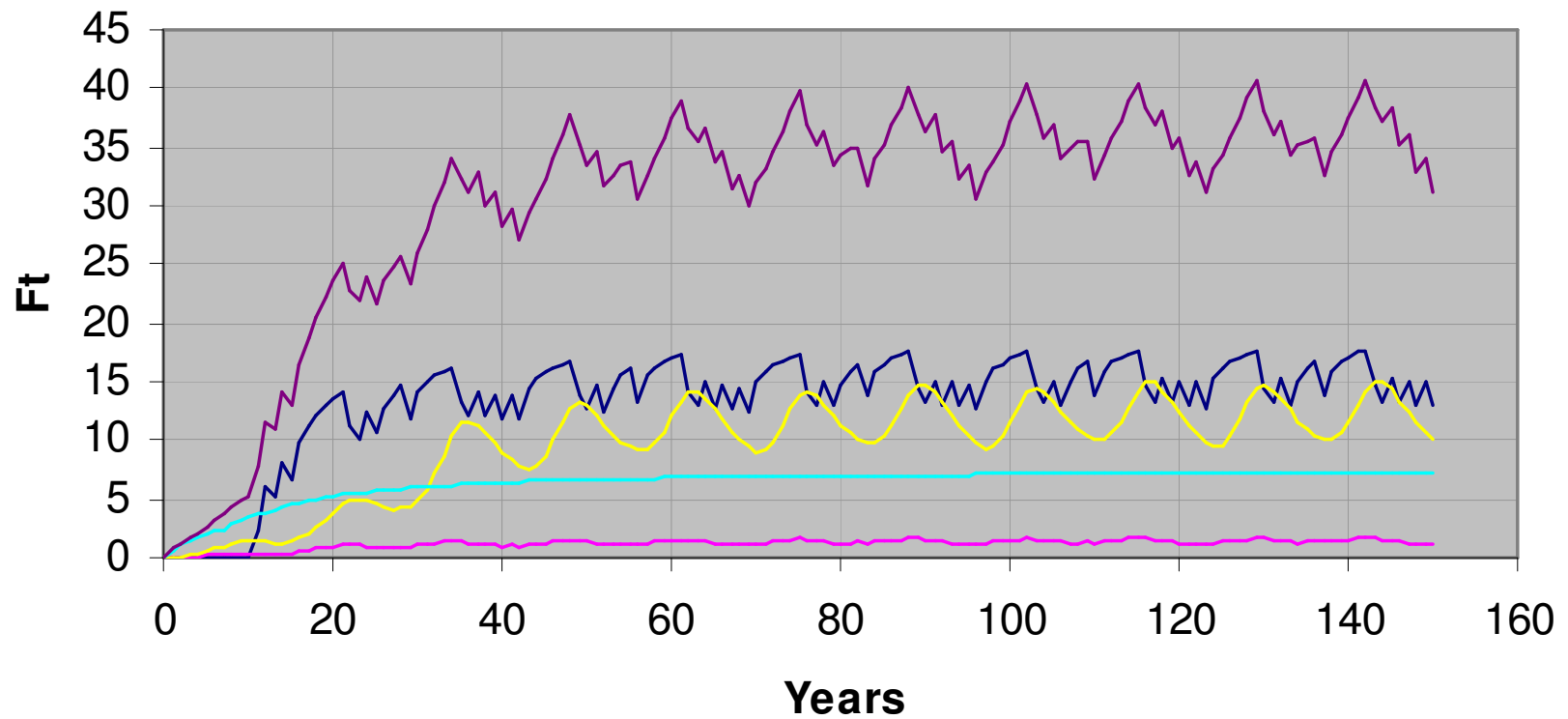
— HardConv — SoftConv — Rech — Demand — Total

Aquifer Water-level Changes - Jerome



— HardConv — SoftConv — Rech — Demand — Total

Aquifer Water-level Changes - Minidoka



— HardConv — SoftConv — Rech — Demand — Total

Discussion

