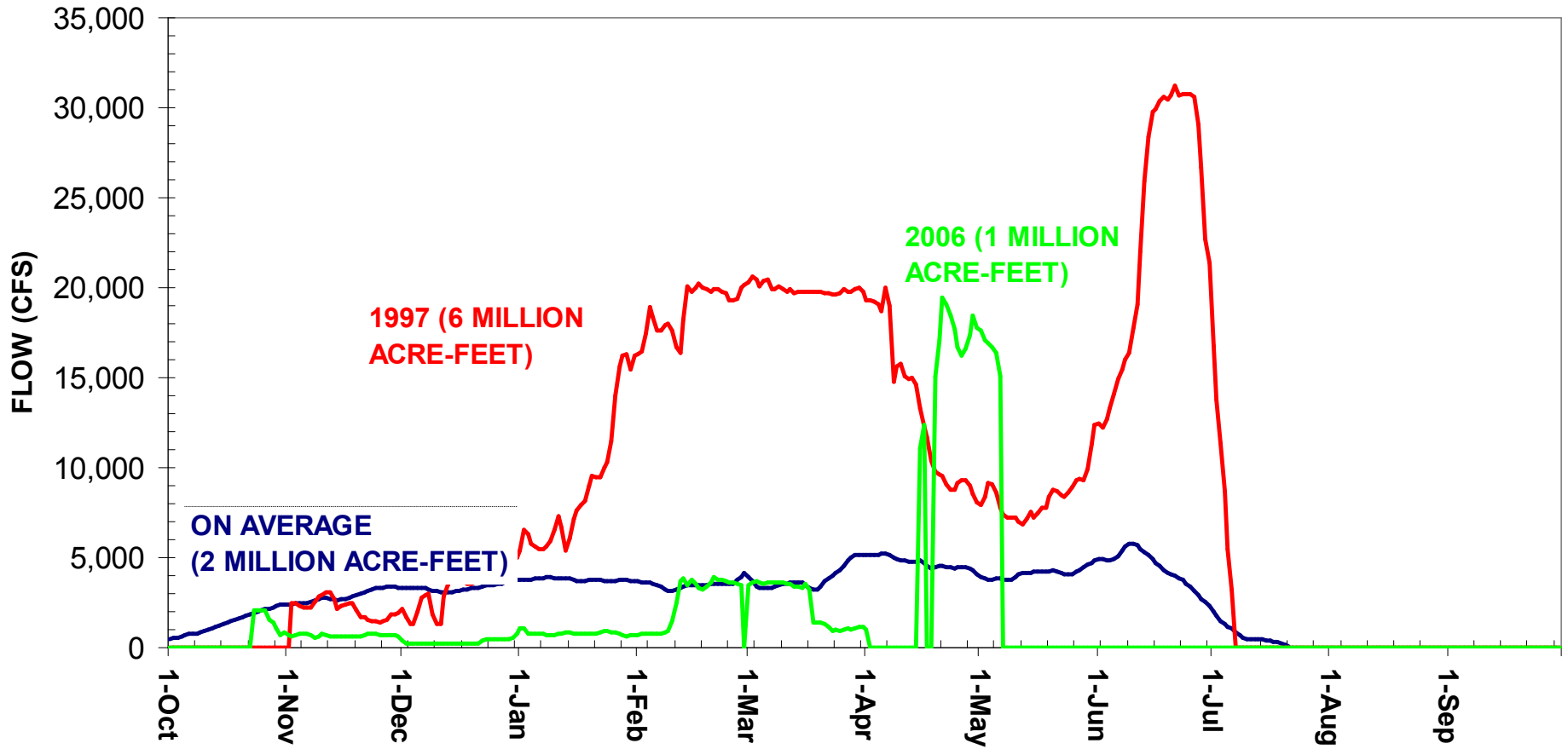


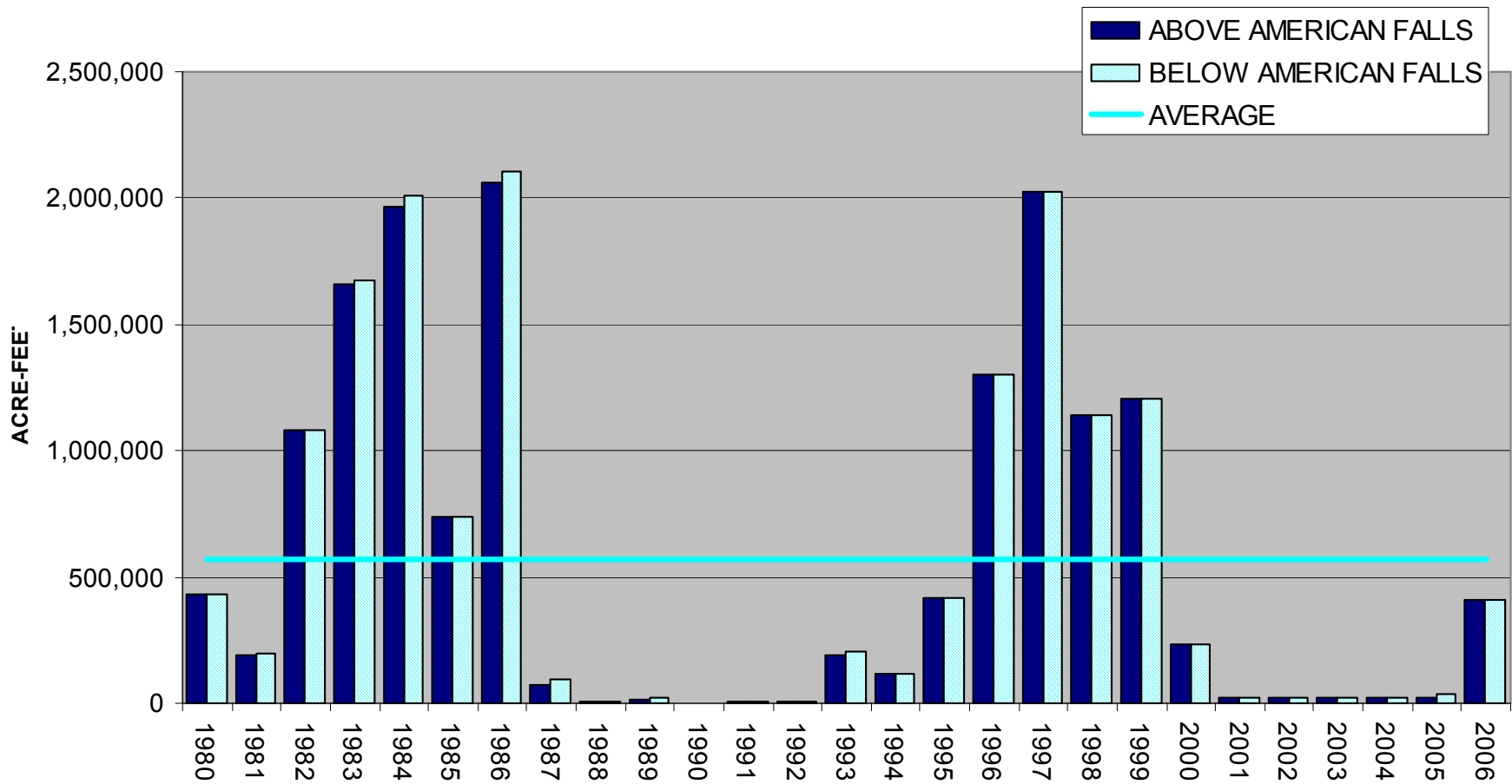
AVERAGE DAILY SPILL PAST MILNER FROM 1980-2006, WITH 1997 AND 2006 DAILY SPILL

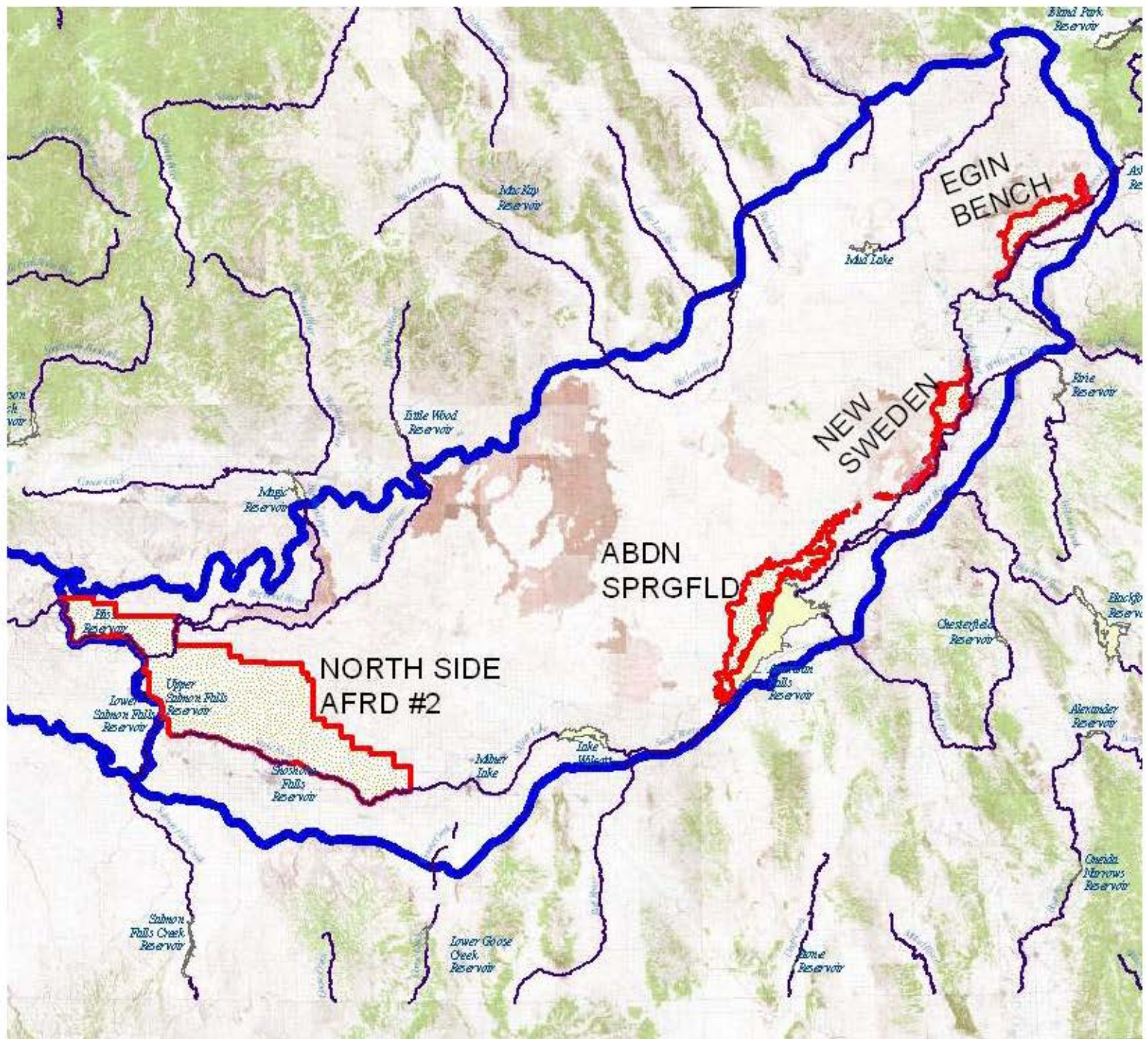


SPILLED MILNER WATER TARGETTED USES

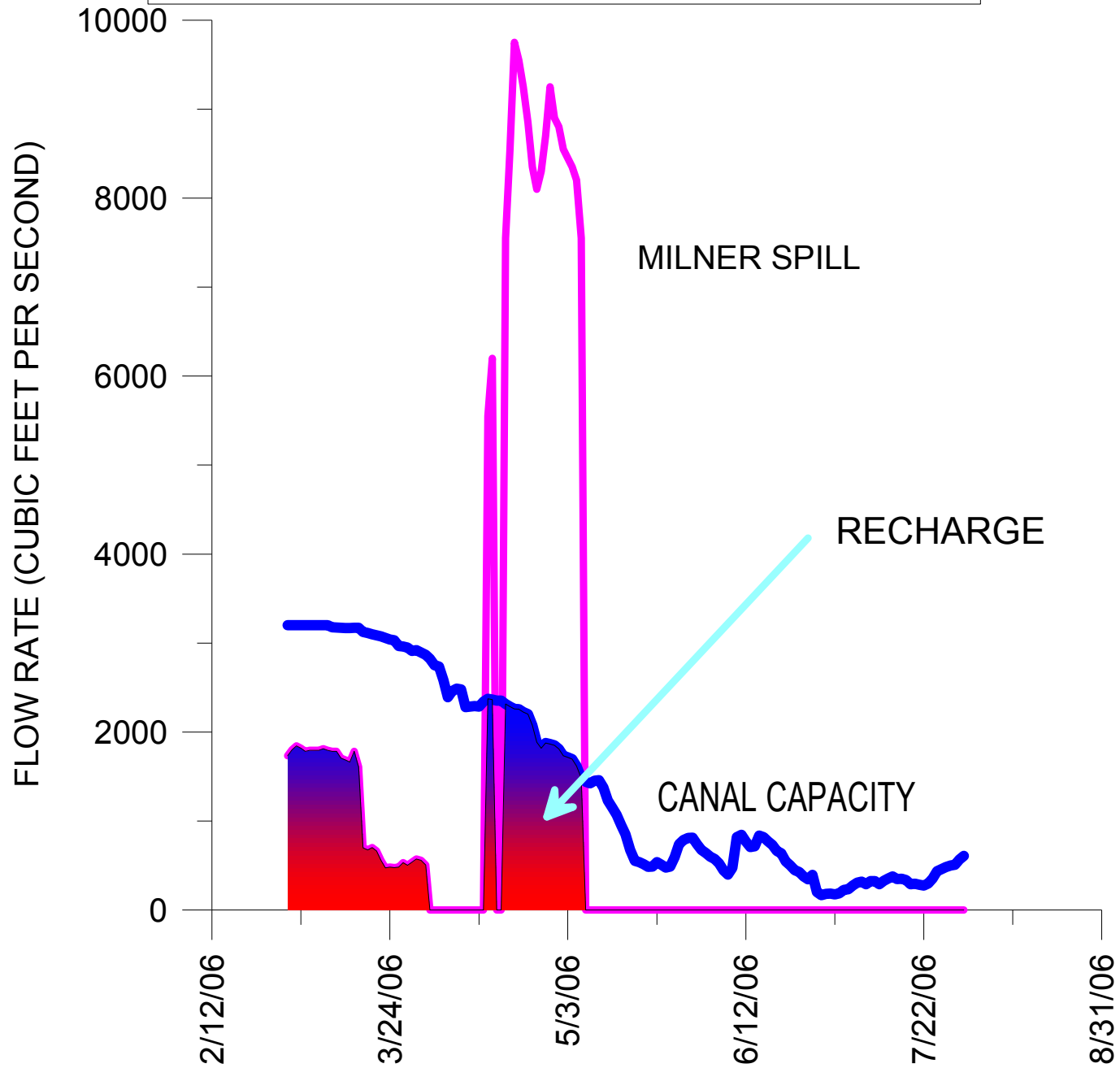
- MANAGED RECHARGE THROUGH CANALS
 - Above American Falls
 - Egin Bench
 - New Sweden
 - Aberdeen Springfield
 - Below American Falls (North Side and AFRD #2)
- HARD CONVERSIONS
 - A & B IRRIGATION DISTRICT
- SOFT CONVERSIONS
 - Lands above and below Minidoka with near-ready ability to use surface water

ANNUAL MILNER SPILLS SHOWN BY AVAILABILITY ABOVE AND BELOW AMERICAN FALLS

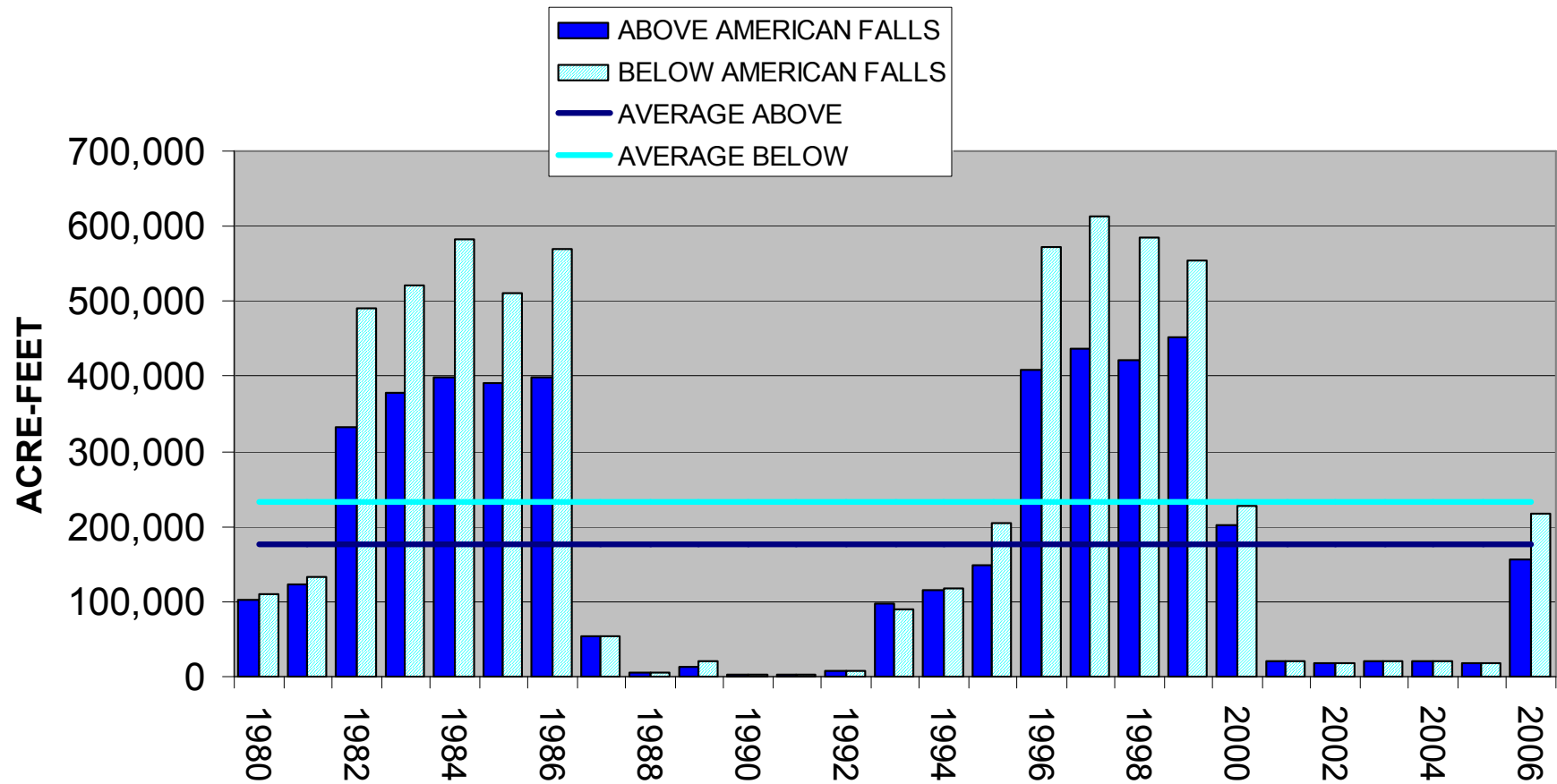




2006 MILNER SPILL AVAIL. ABV AMF, AVAIL. CANAL CAPACITY, AND RECHARGE WATER USED



RECHARGE THROUGH CANALS WITH EXTRA CAPACITY IN MARCH - JULY USING FLOWS SPILLED PAST MILNER



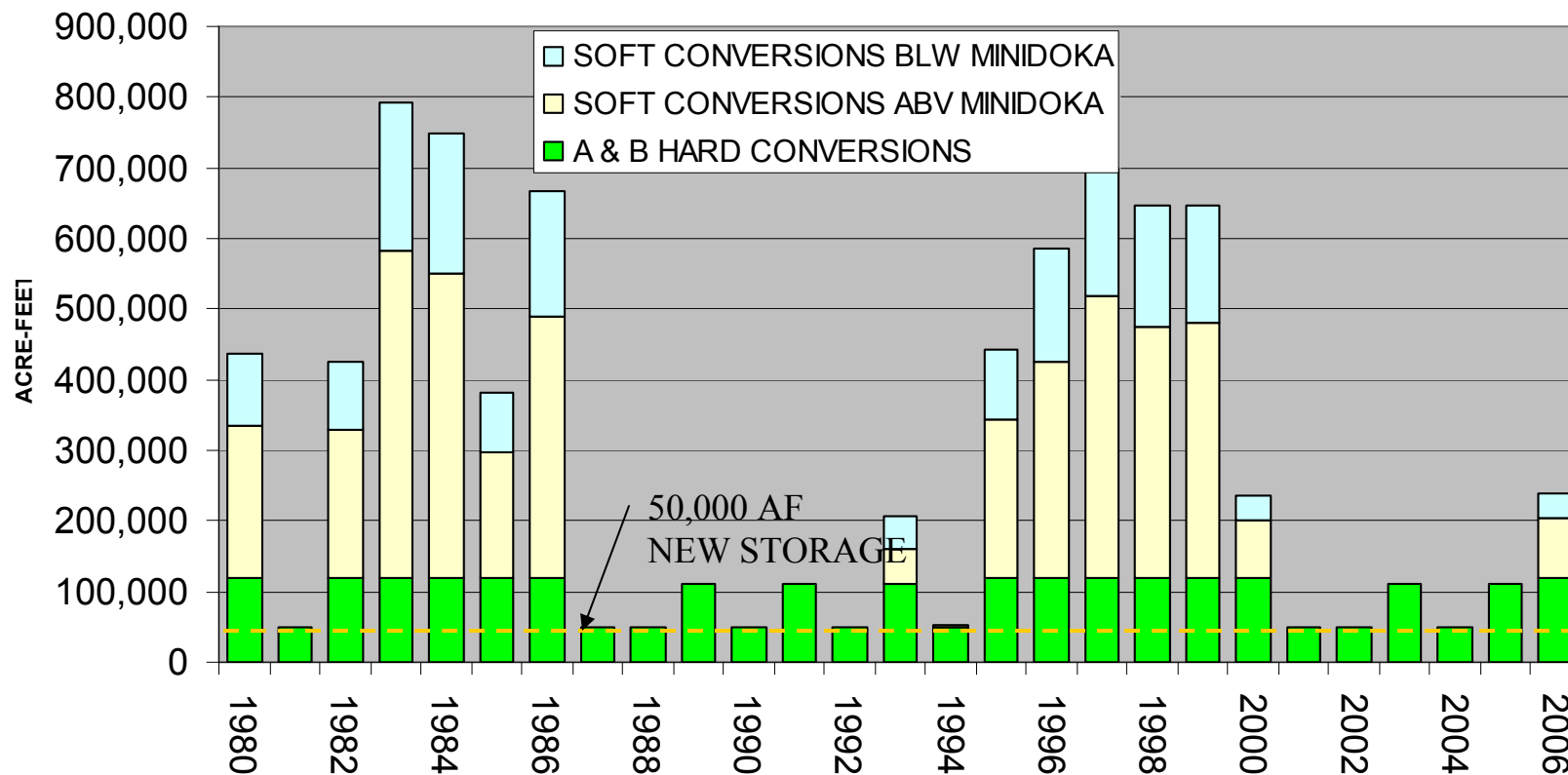
CONVERSION ACRES

- HARD CONVERSIONS (A & B IRRIG. DIST.) GETS PRIORITY
 - Water sources availability assumed all irrigation season:
 - 50,000 acre-feet of new storage at Minidoka Dam
 - Buyout of high-lift pump projects exchanged for flow augmentation water
 - Average 101,000 acre-feet per year
 - Maximum of 205,000 acre-feet per year

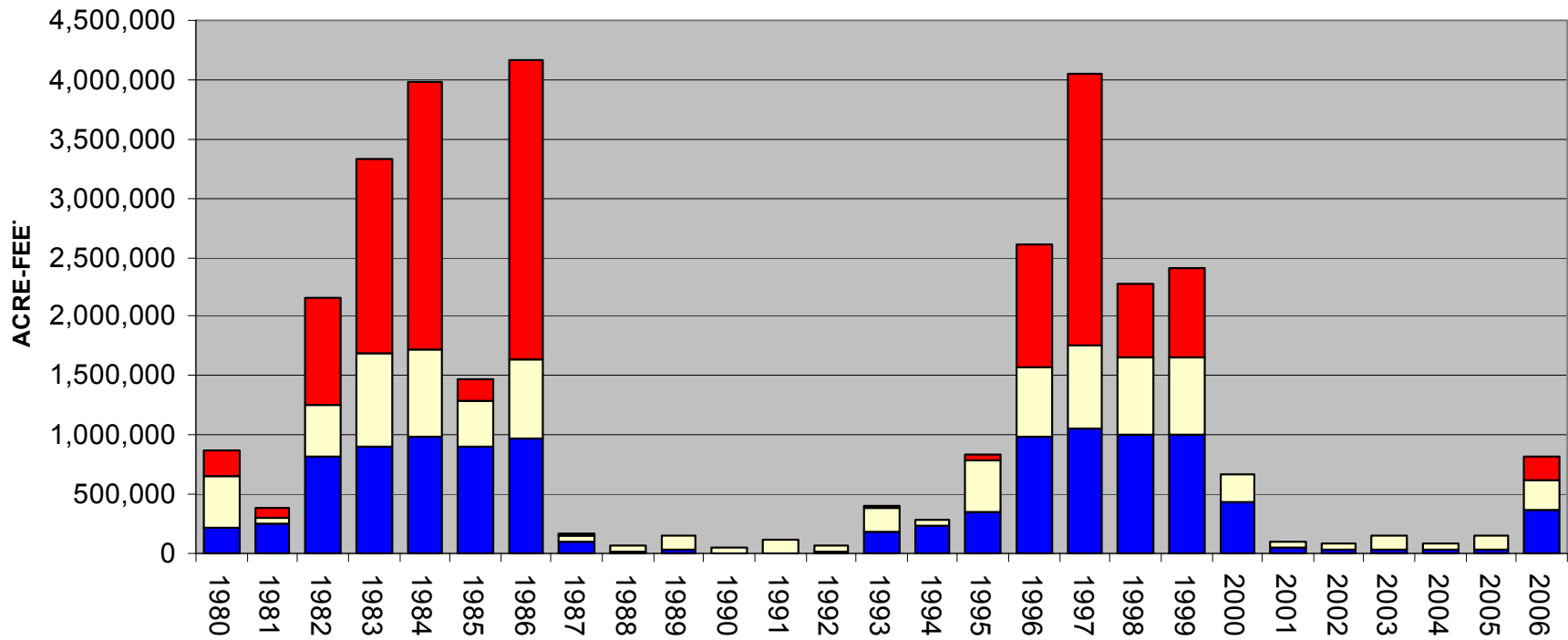
CONVERSION ACRES (CONT.)

- SOFT CONVERSIONS
 - Constrained by acres with access to surface water supply
 - 2/3 of identified acres are above Minidoka, 1/3 are below
 - Use demand of 2300 cubic ft. per second above Minidoka
 - Demand of 1100 cubic ft. per second below Minidoka
 - Sources of water:
 - Unused Milner spills in May and June
 - Unused high-lift exchange water in July through September

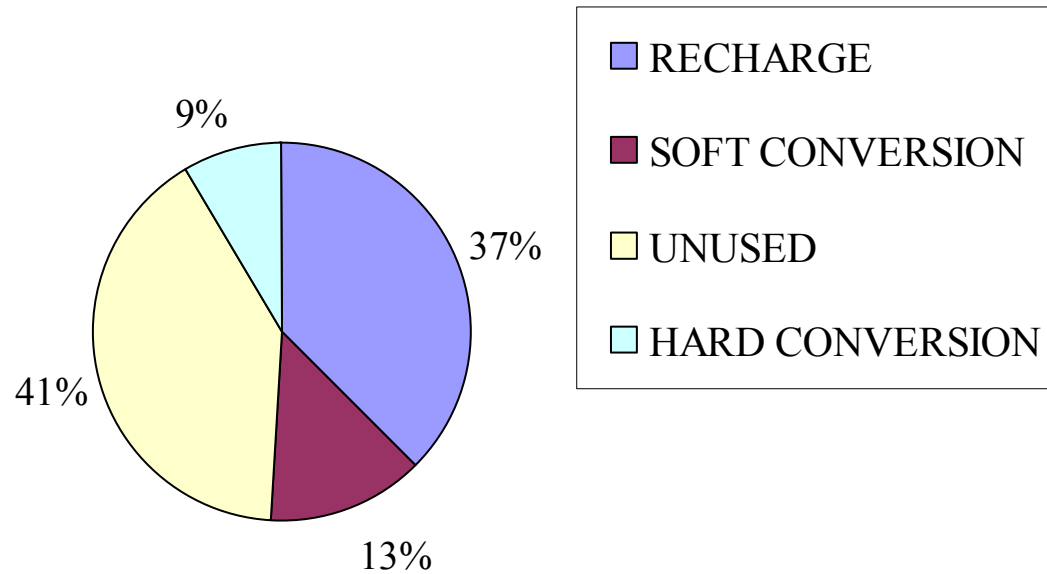
A & B HARD CONVERSIONS AND SOFT CONVERSIONS ABOVE AND BELOW MINIDOKA



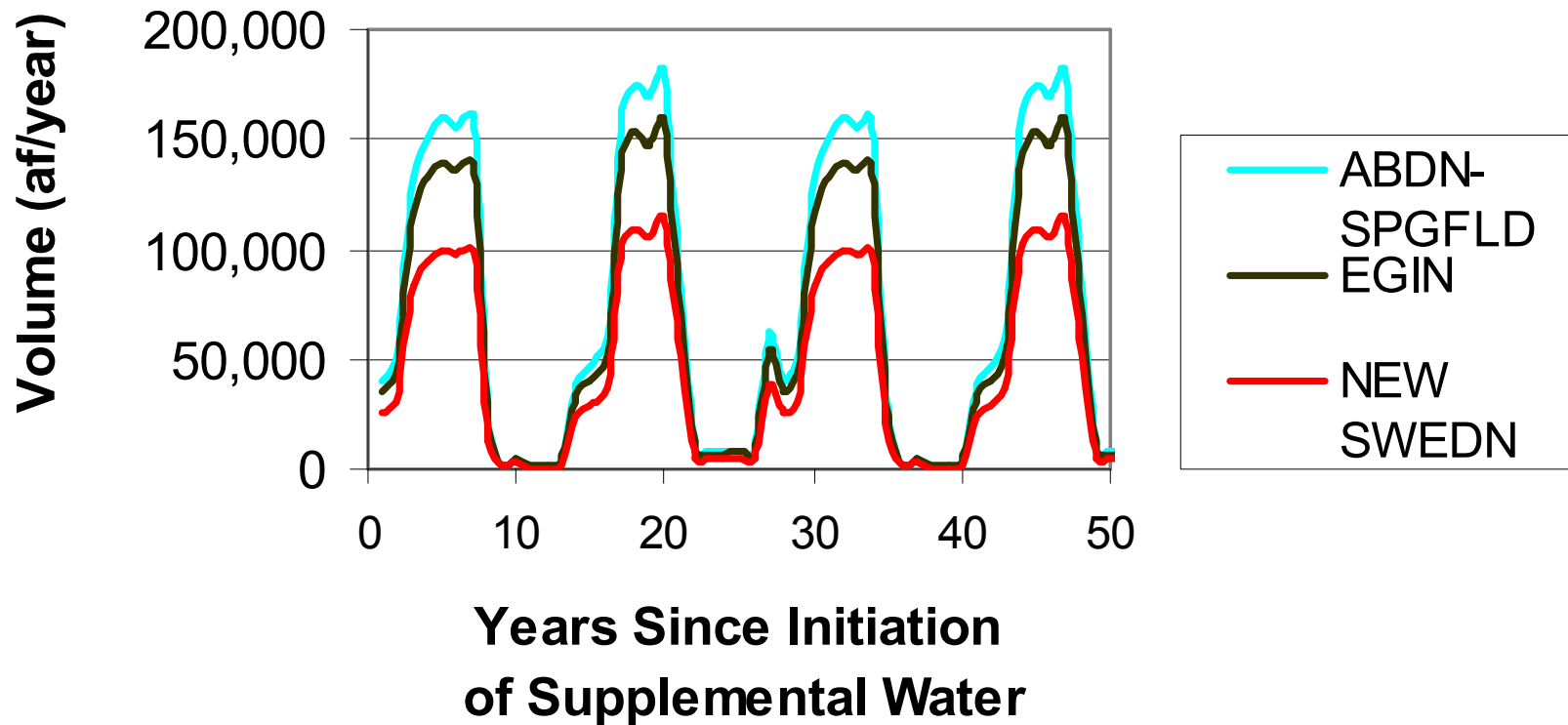
USE OF SPILLED MILNER WATER FOR AQUIFER RESTORATION



**AVERAGE ANNUAL POTENTIAL DISPOSITION
OF SPILLED SNAKE RIVER WATER**



Managed Recharge Above American Falls



Averages:

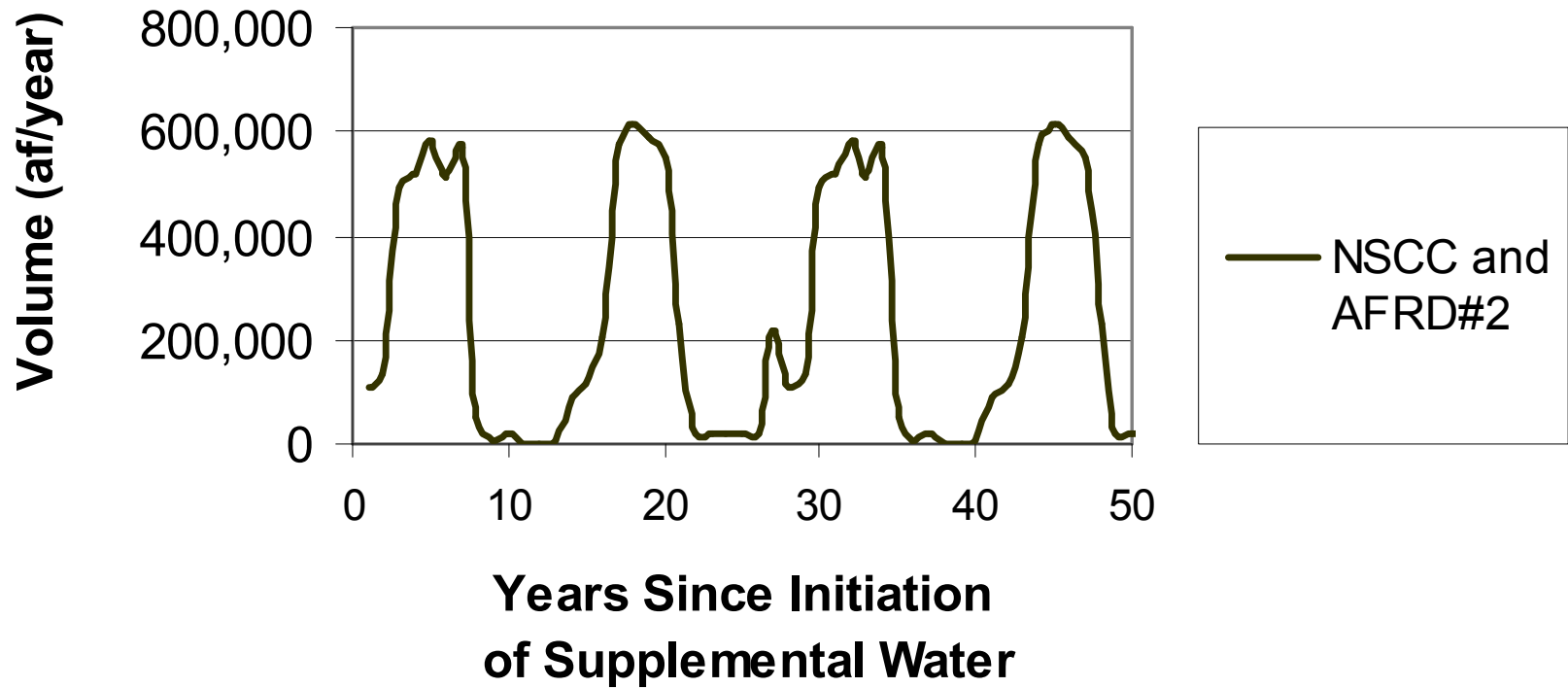
Aberdeen-Springfield: 70,315 af/year

Egin Bench: 61,526

New Sweden: 43,947

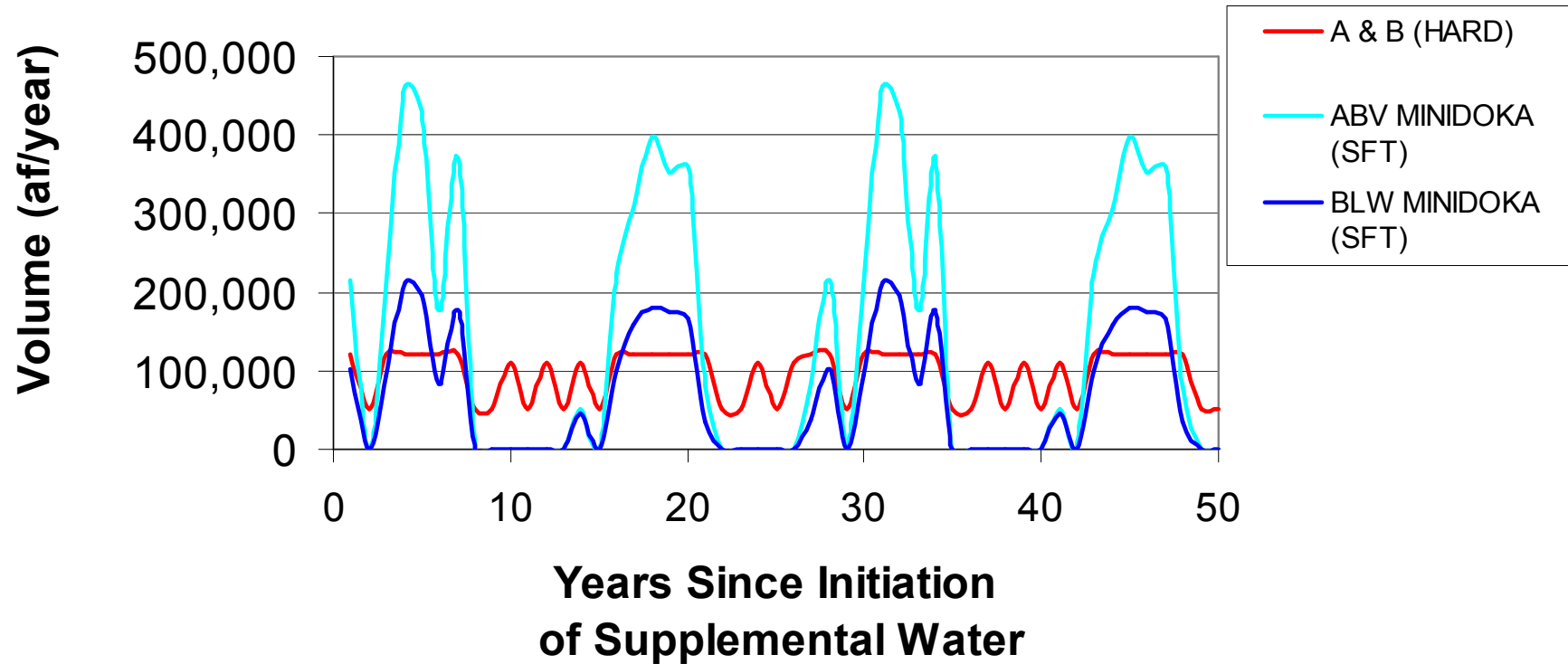
Total: 175,789

Managed Recharge Below American Falls



Average: 232,989 af/year

Conversion Acres



Averages:

A & B (HARD): 94,815 af/year

ABV MINIDOKA : 137,786

BLW MINIDOKA: 65,327

Total: 297,928