

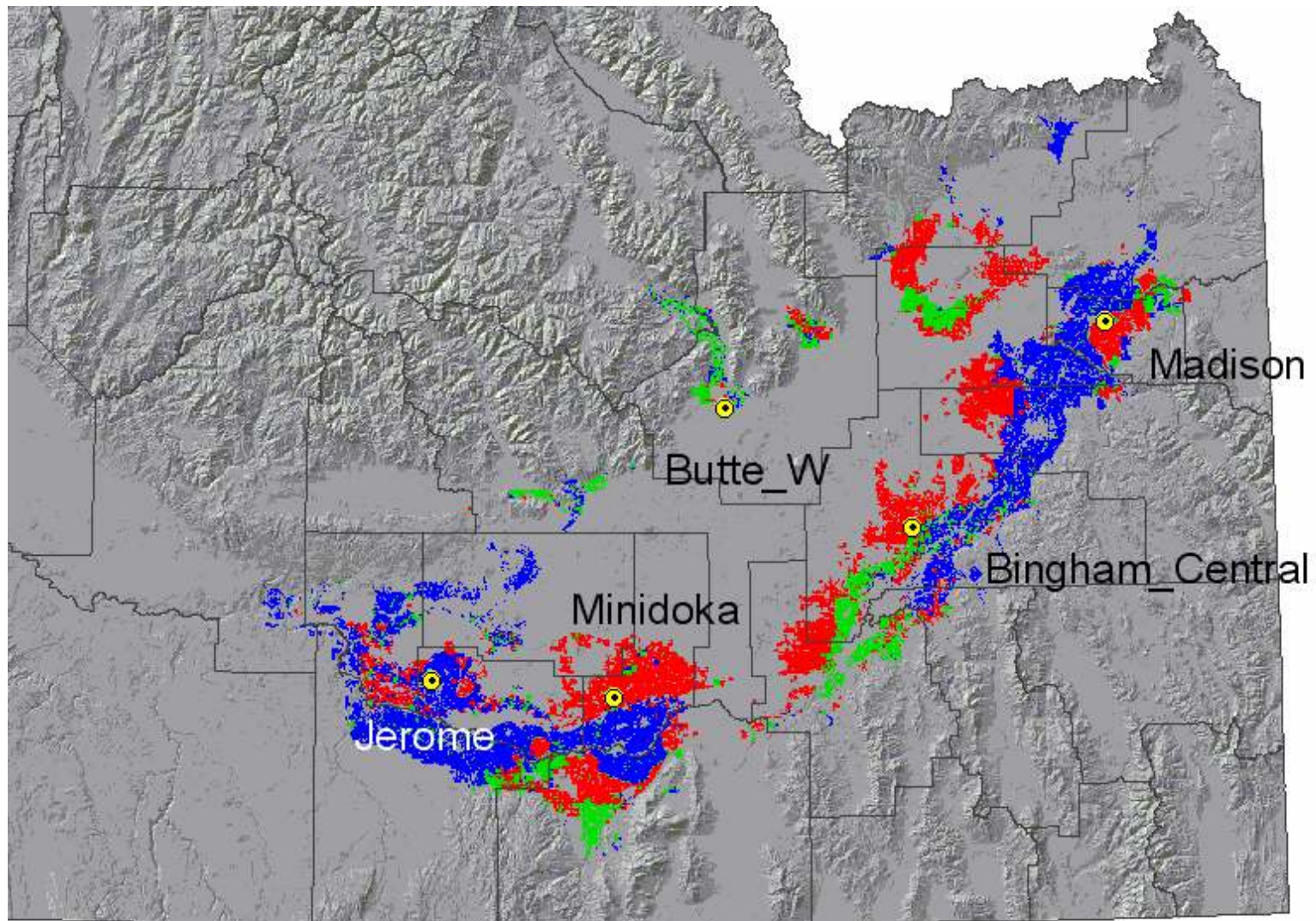
Water-level Impacts of Preliminary ESPA Water-budget Adjustments

Presented to
Idaho Water Resource Board
Advisory Group
15 November 2007



B. Contor

Locations of Water-level Printouts



Activities

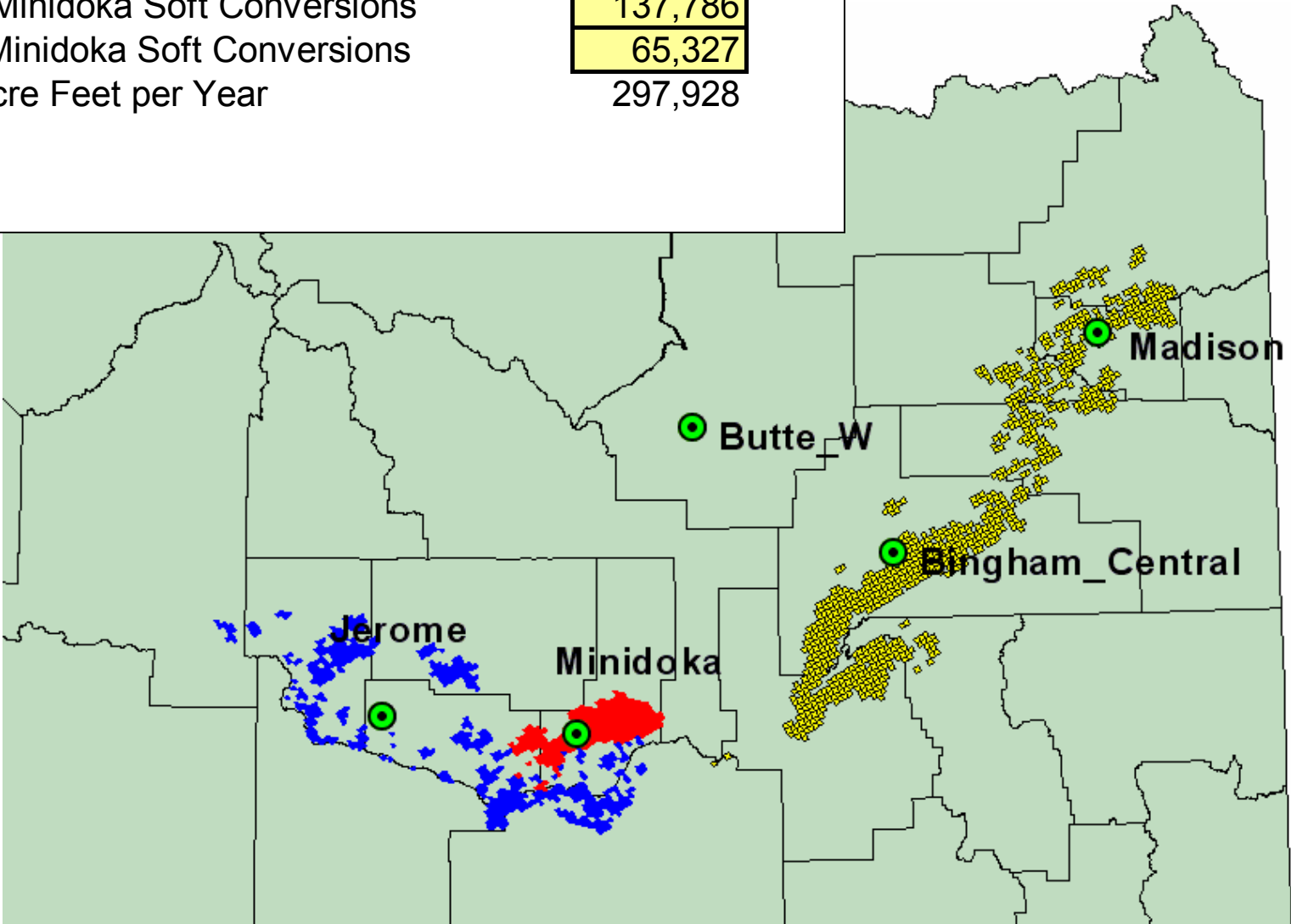
- Conversions
- Recharge
- Adjustments to net withdrawal
 - CREP
 - Buyout
 - Change in crop mix

Conversions

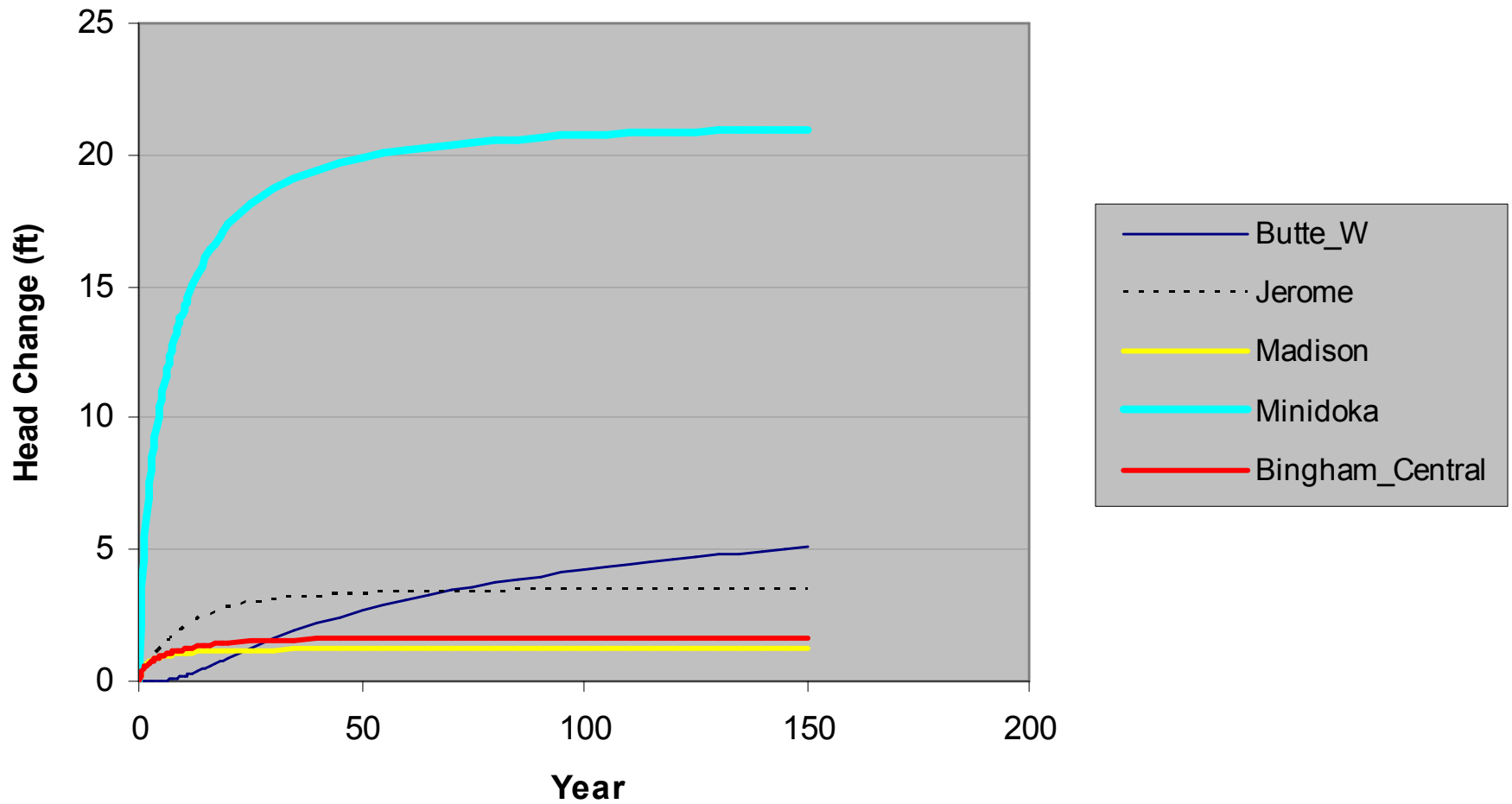


(IDWR photo)

Location	Acre Feet/yr
A & B Hard Conversions	94,815
Above-Minidoka Soft Conversions	137,786
Below-Minidoka Soft Conversions	65,327
Total Acre Feet per Year	297,928



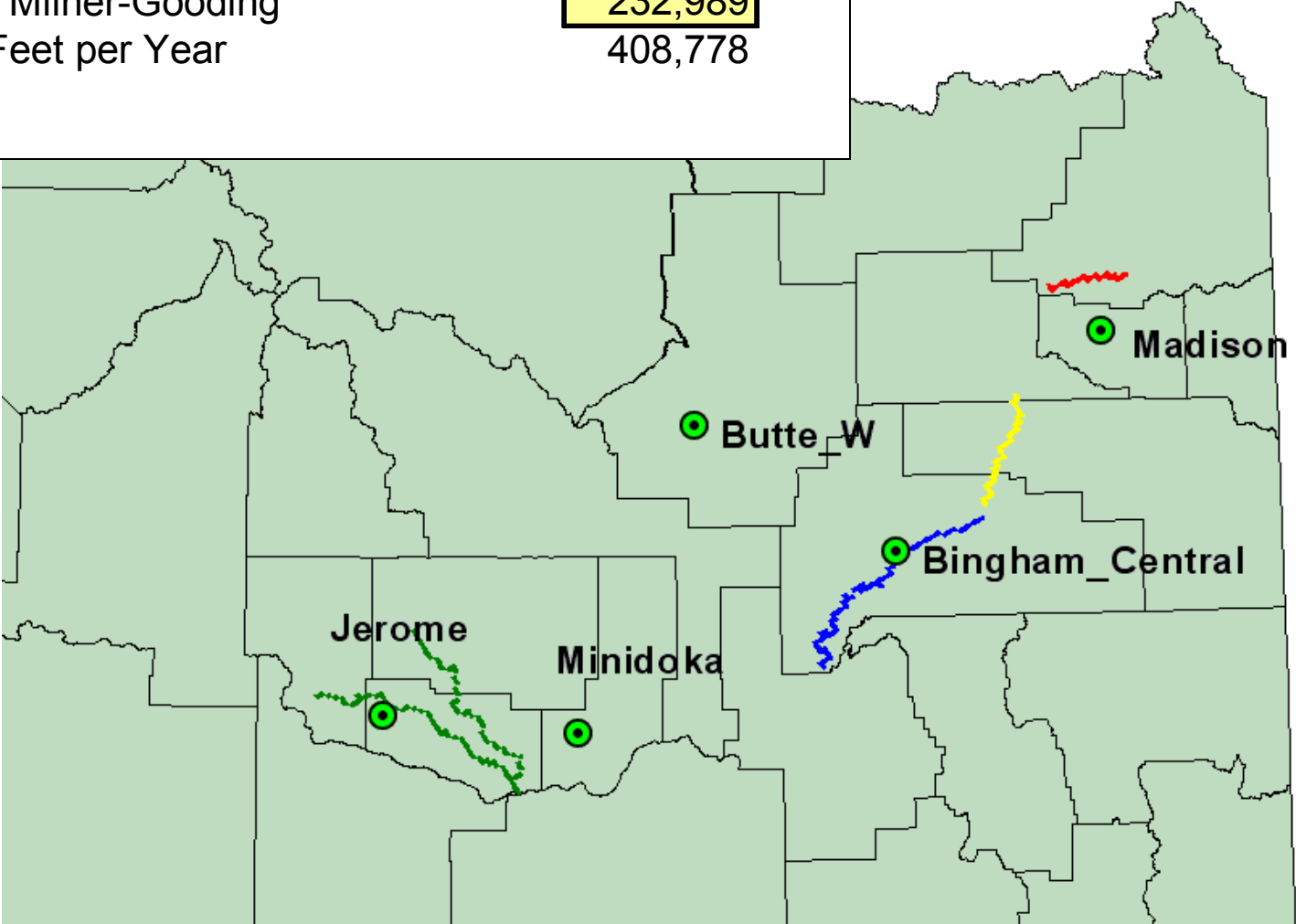
Head Change With Ground-water to Surface-water Conversions



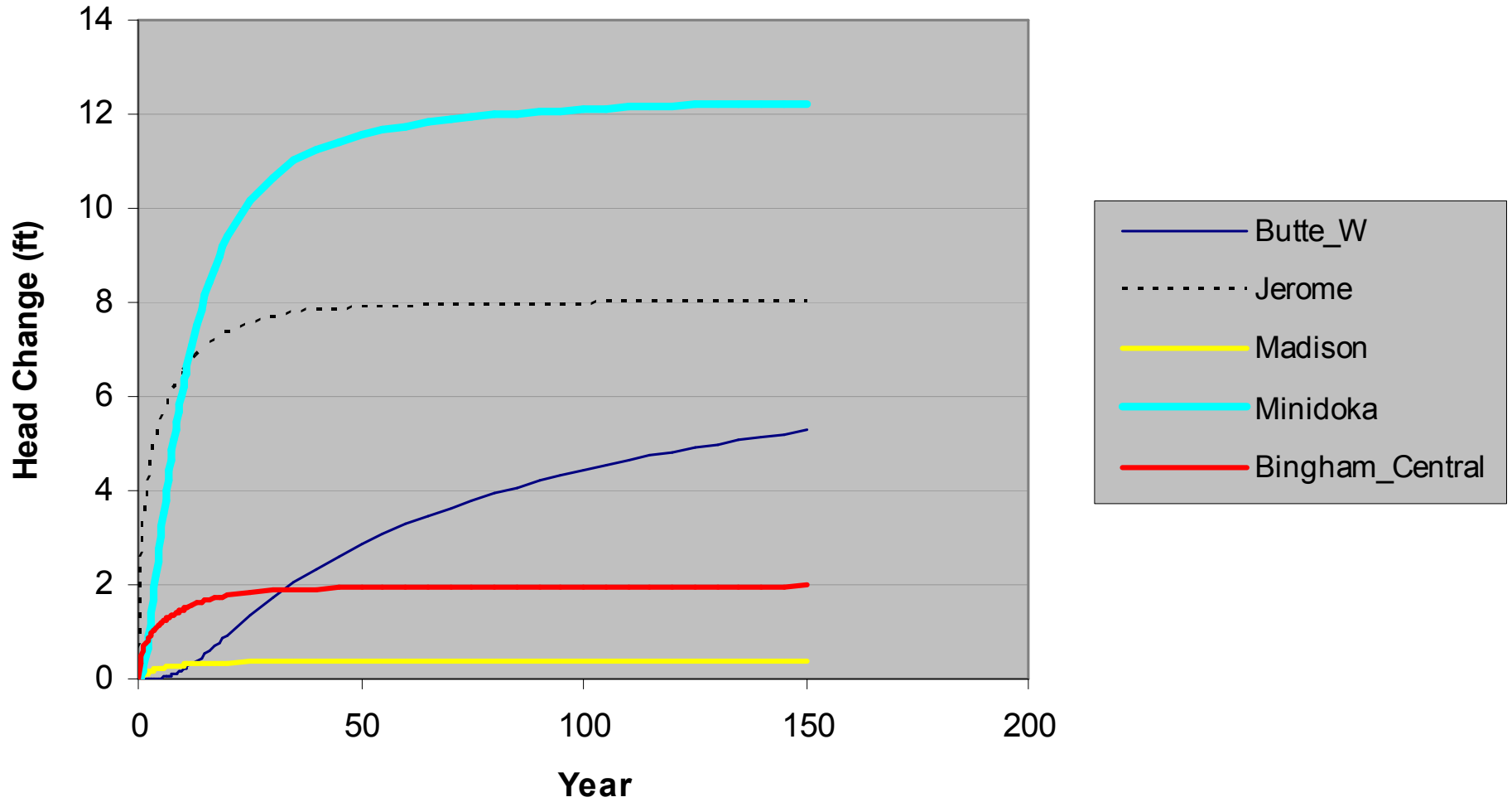
Recharge



Location	Acre Feet/Year
Egin Bench	61,526
New Sweden	43,947
Aberdeen-Springfield	70,316
Northside & Milner-Gooding	232,989
Total Acre Feet per Year	408,778



Head Change With Managed Recharge

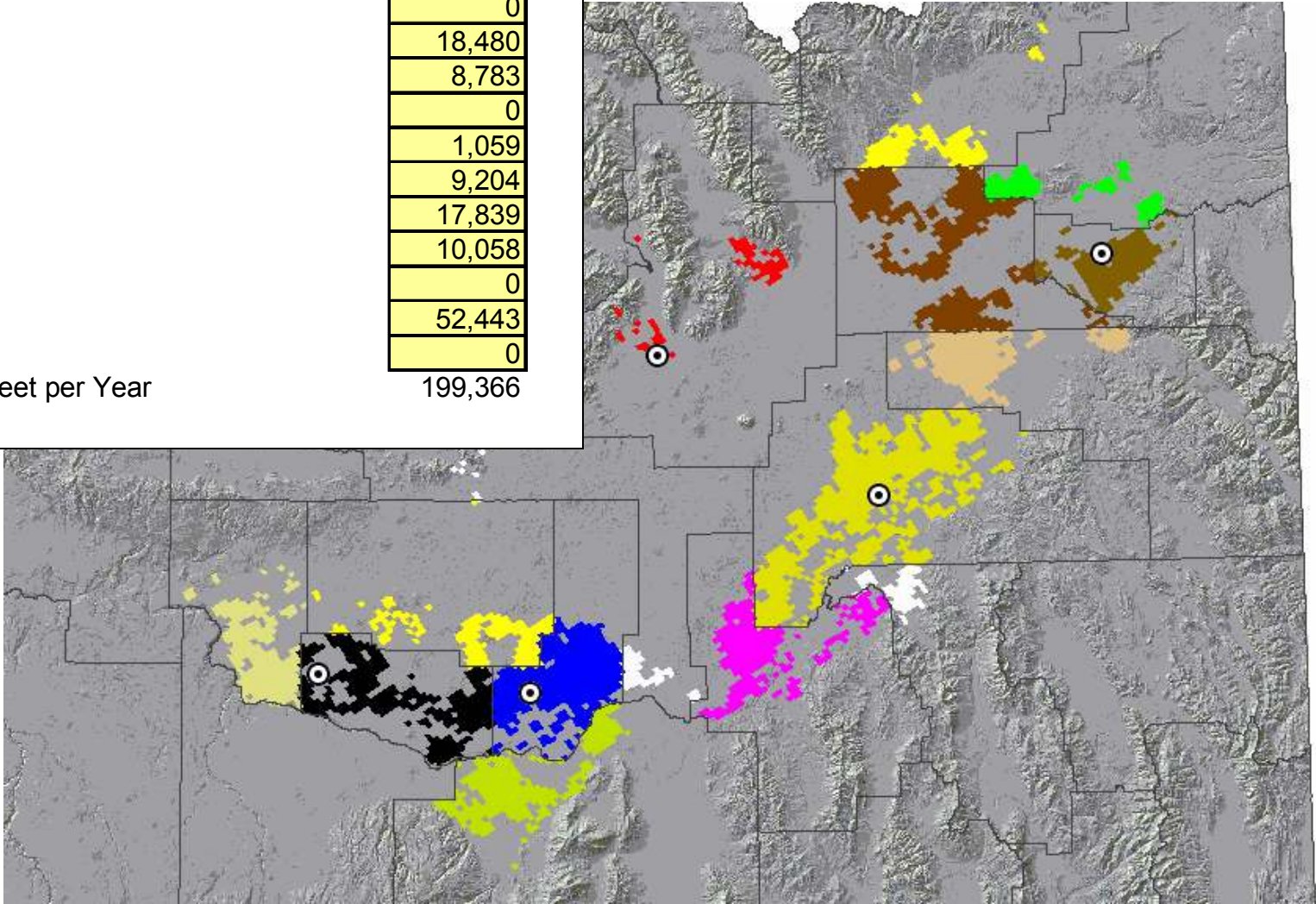


CREP

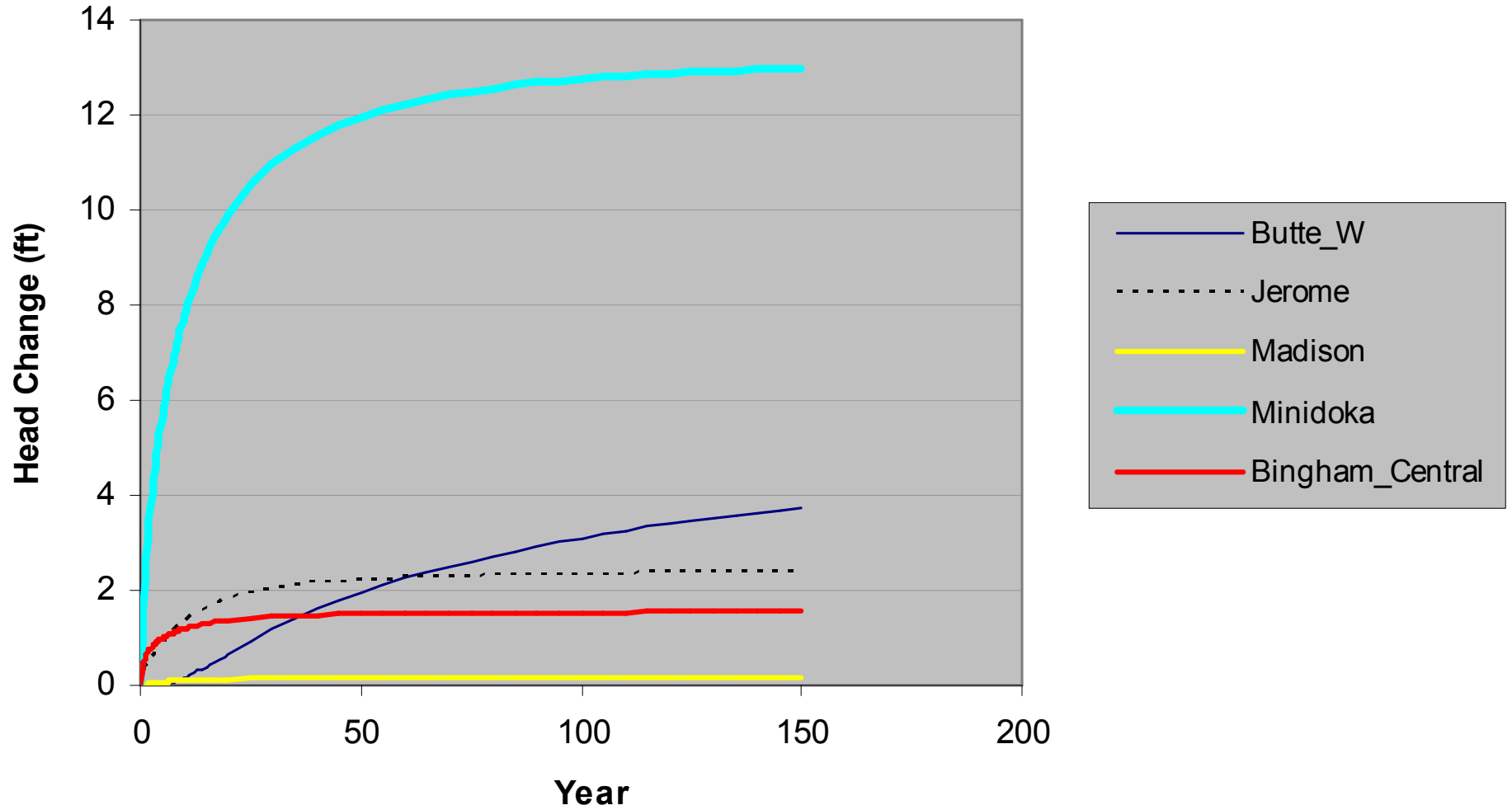
(or other reductions in net extraction)

<http://users.rcn.com/jkimball.ma.ultranet/BiologyPages/B/Biomes.html#Grasslands>

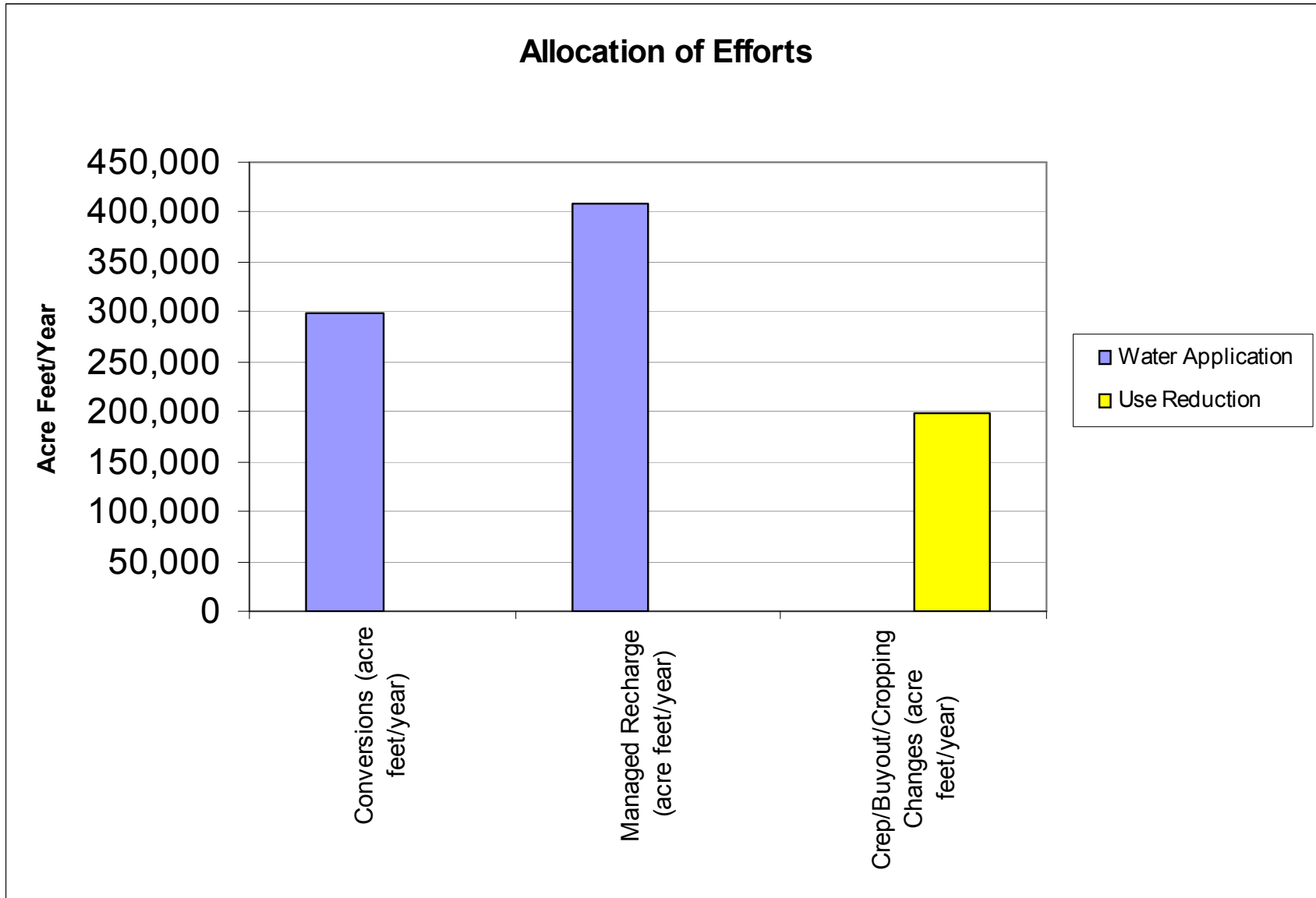
Location	Acre Feet/yr
Bannock	0
Bingham	80,040
Blaine	679
Bonneville	780
Butte	0
Cassia	18,480
Clark	8,783
Fremont	0
Gooding	1,059
Jefferson	9,204
Jerome	17,839
Lincoln	10,058
Madison	0
Minidoka	52,443
Power	0
Total Acre Feet per Year	199,366



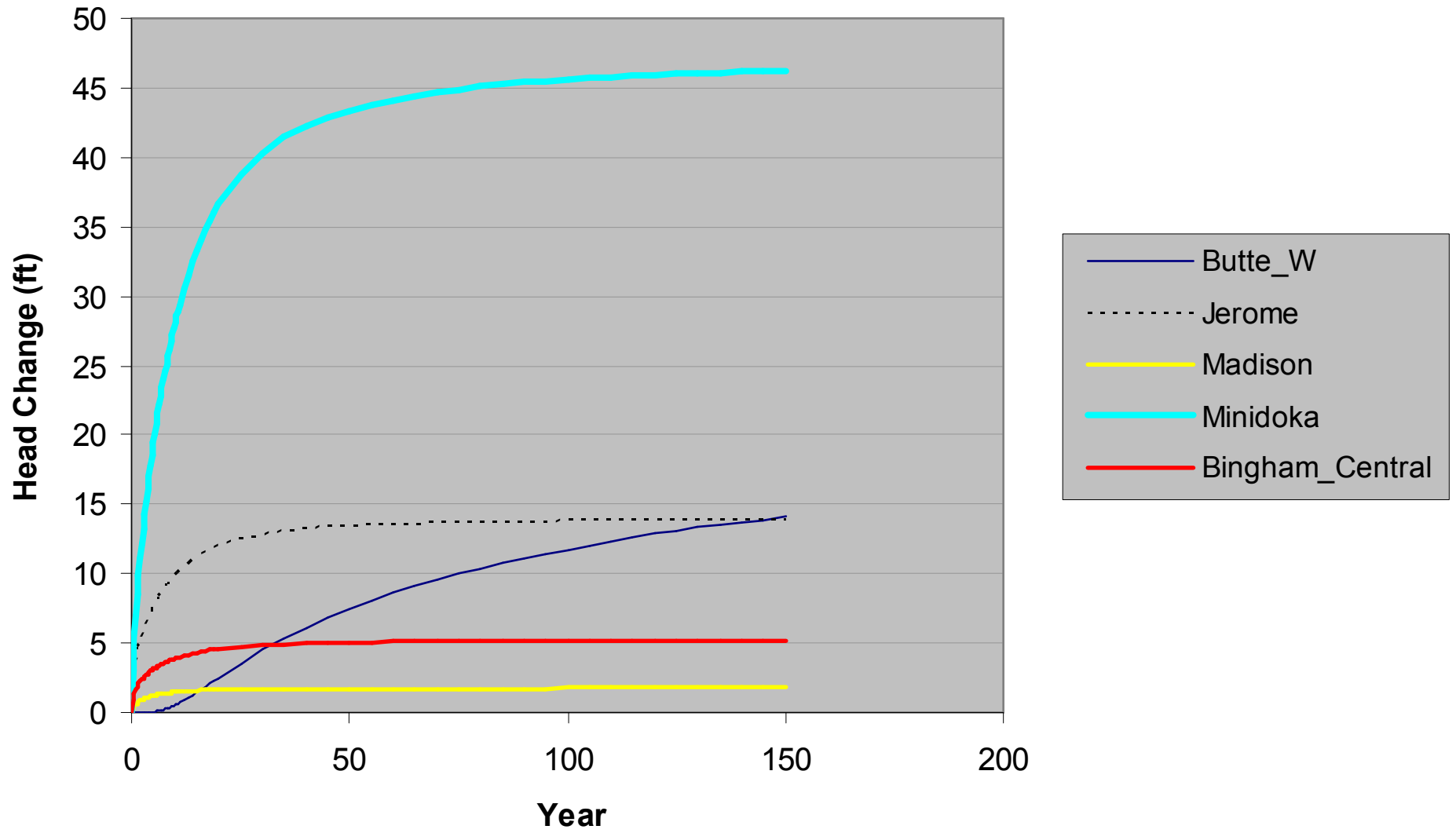
Head Change With CREP, Buyouts or Cropping Changes



Combined Effects



Estimated Head Change at Selected Points (combination of all activities)



(End)

